

OPHELIA - 4640



A - Stucco Bungalow



B - Farmhouse

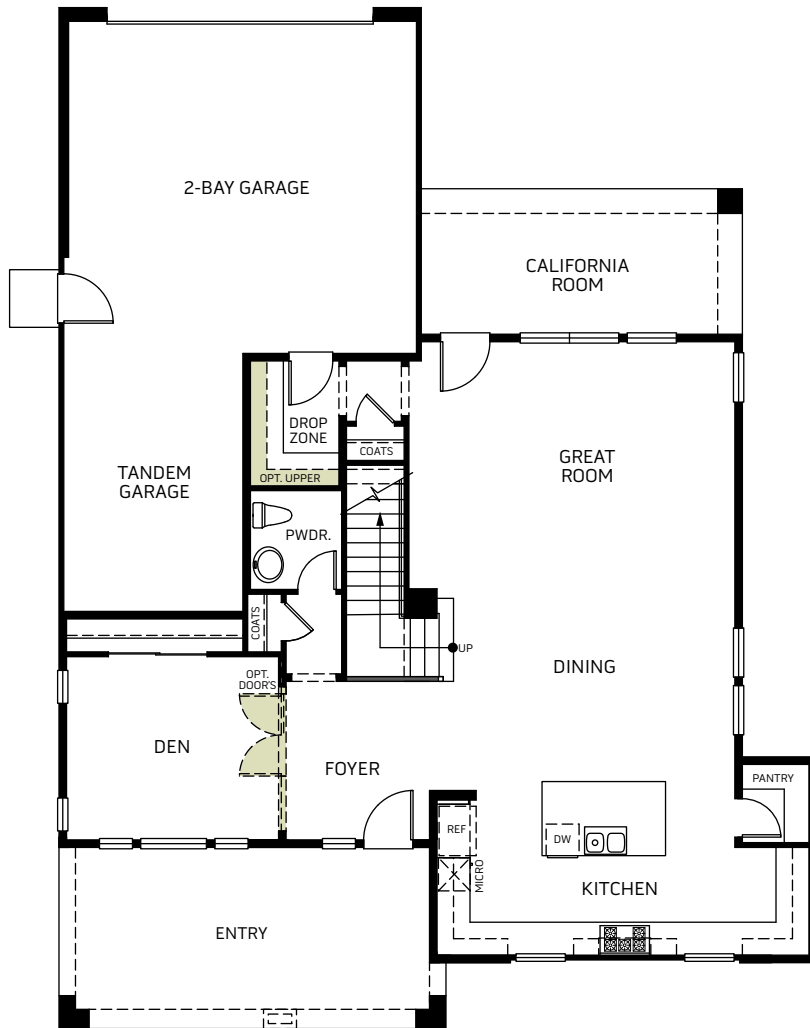


C - Craftsman

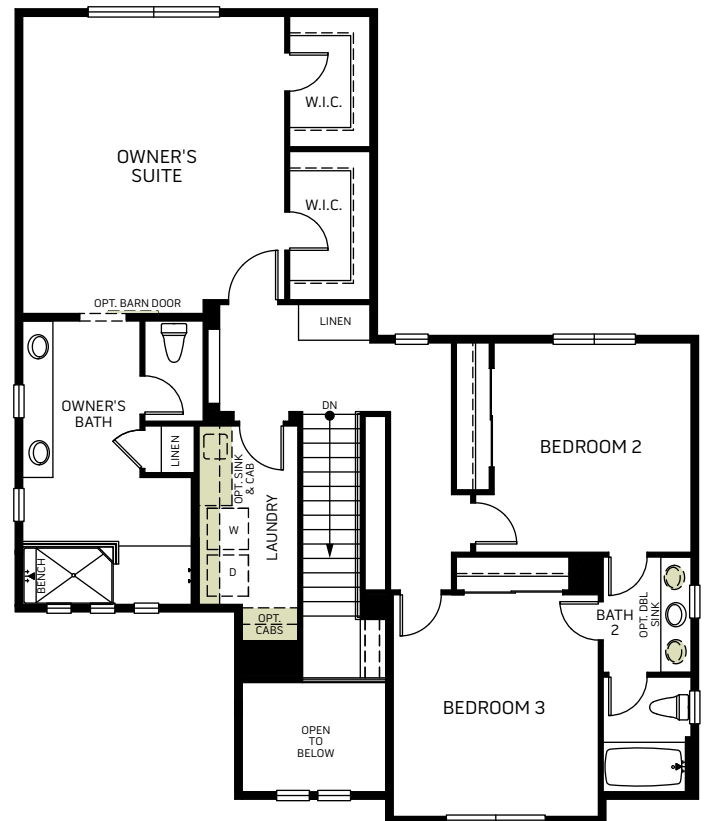


D - Modern Prairie

Two Story • 2,619 - 2,799 Sq. Ft • 3-5 Bedrooms • 2.5-4.5 Baths
Great Room • Kitchen with Island • Dining • Den • 2-Bay Plus Tandem Garage



FIRST FLOOR



SECOND FLOOR

Woodside Homes reserves the right to change elevations, specifications, materials and prices without notice. All square footages are approximate. Window location, porches, ceiling heights and room dimensions vary per elevation. The availability of certain options is subject to construction status and schedule. Optional features may be predetermined and included at additional cost on select homes. Renderings are artist's conception only.



WoodsideHomes.com
Tina Larson
Tina.Larson@WoodsideHomes.Com

OPHELIA - 4640

OPTIONS



A - Stucco Bungalow



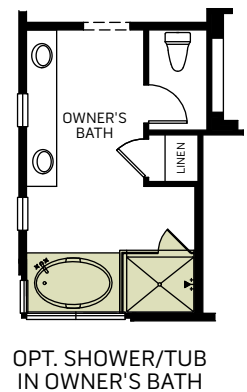
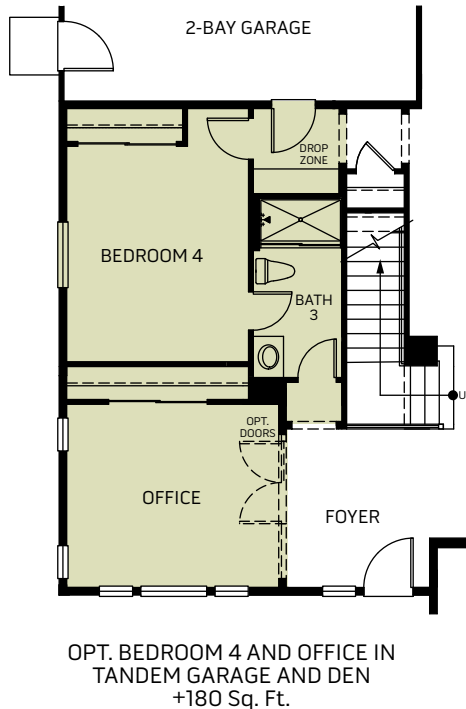
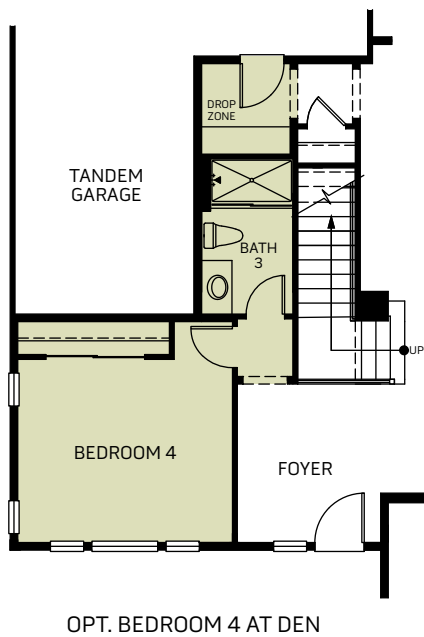
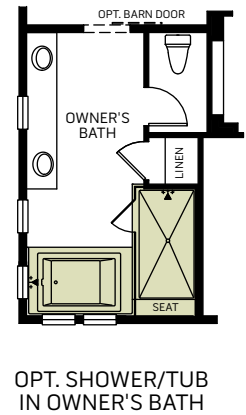
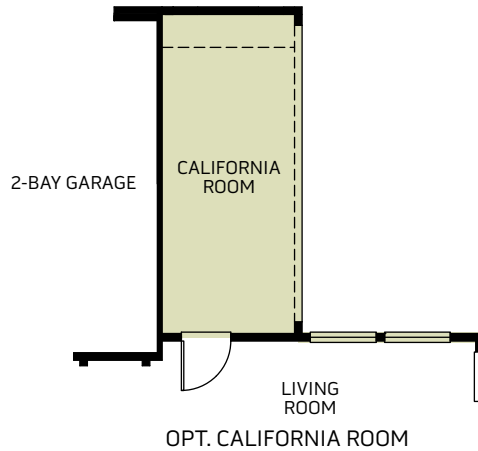
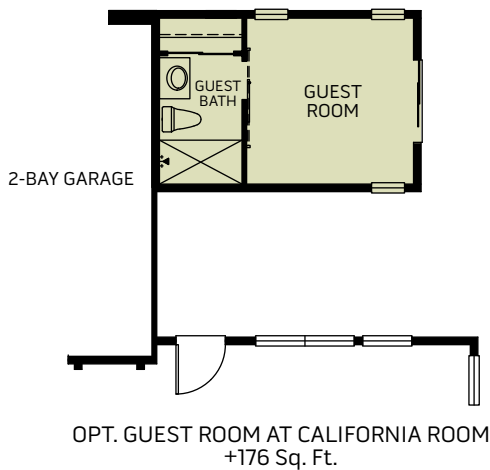
B - Farmhouse



C - Craftsman



D - Modern Prairie



Woodside Homes reserves the right to change elevations, specifications, materials and prices without notice. All square footages are approximate. Window location, porches, ceiling heights and room dimensions vary per elevation. The availability of certain options is subject to construction status and schedule. Optional features may be predetermined and included at additional cost on select homes. Renderings are artist's conception only.



WoodsideHomes.com
Tina Larson
Tina.Larson@WoodsideHomes.Com