

# Antidote: A Colour Cure

DULUX COLOUR TRENDS 2017 THE FUTURE OF INTERIORS

## LATEST TRENDS

### SENTIENCE

A TACTILE REMEDY

### CHROMA

A GRAPHIC VIEW

### CONSTRUCT

A LUXE FOUNDATION

### ENTWINE

A COLOURFUL WEAVE

Interior  
inspirations  
for your home



DULUX.COM.AU

\_\_\_\_\_

[illegible]

THE DULUX COLOUR TEAM RESEARCH TRENDS AROUND THE GLOBE AND DISTILL THEM INTO COLOURS AND THEMES FOR AUSTRALIAN INTERIORS.

# OUR CONTRIBUTORS

---

## Andrea Lucena-Orr

TREND FORECASTER



Colour and Communications Manager for Dulux Group, Andrea Lucena-Orr researches colour trends presenting her findings to trade and retail markets, along with media. Travelling to Milan Design Week, Andrea and Bree Leech solidified their initial ideas for the 2017 trends. "I adore working with colour - it has the power to transform products and spaces and is integral in evoking emotion"

[DULUX.COM.AU](http://DULUX.COM.AU) / [INSTAGRAM @DULUXAUSTRALIA](https://www.instagram.com/duluxaustralia)

## Bree Leech

TREND FORECASTER, CREATIVE DIRECTOR, PRODUCER & STYLIST



Bree Leech is the creative director behind the Dulux Colour Forecast. Collaborating closely with Andrea Lucena-Orr to create the trends and Heather Nette King to produce & style the images, Bree Leech's extensive experience in the design industry helped shape the Dulux 2017 trends. This year Bree also edited and creatively directed the supporting digital publications. "Colour trends are intriguing

and often complex, I love being able to bring them to life in imagery that is both beautiful and tells a story."

[TEXTUREDESIGN.COM.AU](http://TEXTUREDESIGN.COM.AU) / [INSTAGRAM @BREELEECH](https://www.instagram.com/breeleech)

## Heather Nette King

PRODUCER & STYLIST



A leading interiors stylist and writer for many Australian and international interior titles, Heather Nette King's love of colour has great influence on the Dulux colour forecast imagery and ideas. Collaborating with Bree, Heather has conceptualised, styled and produced the images for the past three years. "Getting to feature colour in unique combinations and inspire others to do the same makes

this one of my favourite projects"

[HEATHERNETTEKING.COM.AU](http://HEATHERNETTEKING.COM.AU) / [INSTAGRAM @HEATHERNETTEKING](https://www.instagram.com/heathernetteking)

# CONTENTS

## DULUX COLOUR TRENDS 2017

---



### **SENTIENCE:**

A TACTILE REMEDY

Soulful colour to draw you in to a tactile world



### **CHROMA:**

A GRAPHIC VIEW

Confident interior style through bold colour

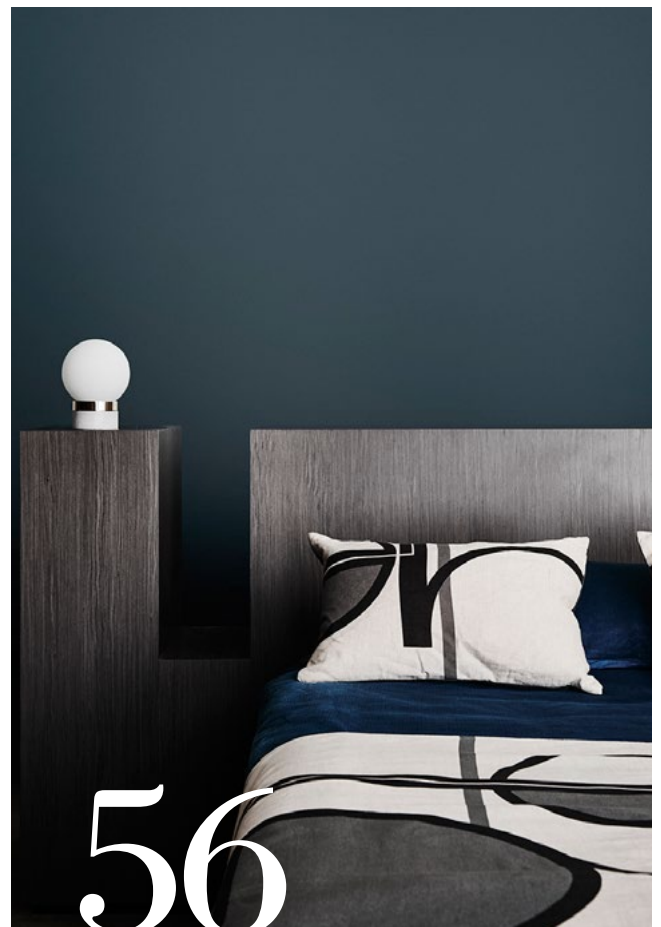




## ENTWINE:

A COLOURFUL WEAVE

Global colour palettes blending tradition & modernity



## CONSTRUCT:

A LUXE FOUNDATION

A tonal palette of cool hues for subtle luxury

# HOW TO USE YOUR ANTIDOTE

To enhance your experience, 'Antidote: A Colour Cure' is an interactive e-mag. This magazine can be viewed on tablets, smartphones and computers.

Click through the Dulux Colour Trends 2017 as you would a printed magazine. If you have trouble, refer to the icons and instructions below.

## DOWNLOAD AND VIEW OFFLINE:

Select the download button to receive an interactive pdf of the magazine.

## TIPS:

Click/Tap on any image on the contents page to jump to the start of that trend.

Click on the Dulux website in the bottom left hand corner to go to the Dulux Colour Trends page.



## NEXT PAGE / PREVIOUS PAGE

Desktop: icon sits in the middle on either side of the emag or in the tool bar below the emag, either side of the page number

Tablet/smartphone: swipe left and right



## RETURN TO START OR END

Icon is bottom left or right outside of pages



## ZOOM



## SEARCH



## FULL SCREEN



## SHARE ANTIDOTE ON SOCIAL MEDIA



## CLIP & SHARE

Icon in the top right corner of the magazine, select the area and share with friends on social media or pin it to a board on your pinterest account.

# GUIDE TO COLOUR SELECTION

## Selecting colour from the Dulux Colour Trends

Throughout the Dulux Colour Trends you'll find inspiring colours and ideas on how to bring them into your home. Due to limitations of your display screen and the printing process, photographic and printed images and swatches may not represent true colour. Colours and images displayed are a guide only.

If you love one of the colours from our trends we recommend you review it in accurate colour chips, A4 swatches or sample pots.

At the end of each trend you'll find the full palette of colours, click on the link 'Order A4 swatches here' and it will take you directly to the Dulux shop. Here you can order A4 colour swatches to view accurate colour in your home, they are inexpensive, simple to order and delivered directly to your mailbox.





DULUX COLOUR TRENDS 2017

# **Antidote: A Colour Cure**

*Dulux* is prescribing distilled colour palettes as an antidote to many of the challenges we face in our modern lifestyles.

We are presenting a visual cure through colour, with palettes that will promote tactility and warmth as a remedy to excessive screen time; offer globally-inspired hues to remind us how we are all connected; suggest saturated colours to combat our overdose of cookie-cutter style, or, as a balance to these bold palettes, administer cool tonal hues that draw inspiration from raw minimalism.

The Dulux Colour Trends 2017 is your perfect prescription for the mundane.

# sentience

A TACTILE REMEDY





LOUNGE ROOM FEATURES **DULUX PUPU SPRINGS** (MAIN WALL), CUPBOARDS ON THE LEFT IN **LAND LIGHT**, JOINERY DETAILS IN **LAND LIGHT** (TOP) & **BEIGE MYSTERY** (BOTTOM) AND WINDOW BOX IN **PINKHAM**.

vessels on sideboard: tall vessel *bridget bodenham* via *scouthouse*; small bowl *kazari zigu zagu*; large bowl *home owners own*; cork stool *living edge*; shaggy cushion *linen house*; textured cushions *figgoscope*; ottoman *living edge*; throw and rope basket *mr jason grant* from *scouthouse*; glass planters *guy mathews industrial*; concrete planter *cult*.



**Dulux**



MEALS AREA FEATURES  
**DULUX LAND LIGHT.**

chair *fanuli*; teapot *sophie moran* from *craft victoria*;  
wall hanging *warped threads*.



# Texture has become a remedy for our senses.

The ever-present glow of screens remains a constant in our busy lives. From your alarm clock first thing; your phone as you scroll through your social media feed; catching the morning news on your tablet; negotiating the world through a gps; staring at your work monitor, then home to the TV: and so it goes on again.

What have your fingertips touched, or your eyes gazed upon today? Less and less it is the crunch of a freshly-printed newspaper, or the stiff pages of a crisp new book as they bend against the weight of your hands. Rapid tapping and swift swipes across a screen have replaced those tactile moments that we once took for granted as part of everyday life. Our eyes scan more words and images each day than ever before.

The need to touch and observe different scenes and surfaces is innate to us. So how do we replenish our senses?

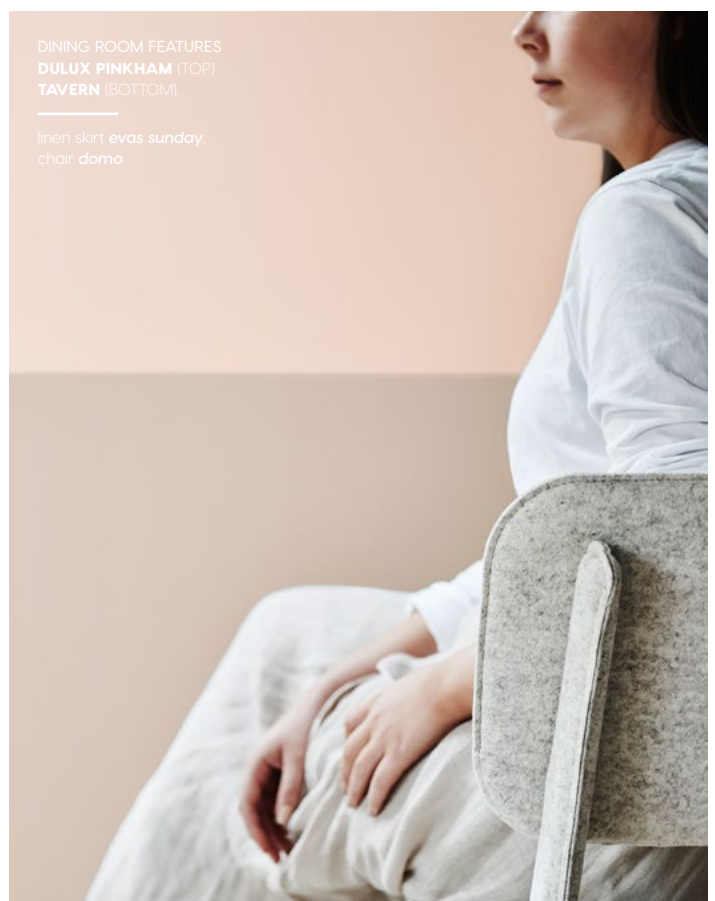
Move away from smooth, cold surfaces and surround yourself with warm colours, flesh tones and vegetal hues. Rediscover colours that are soothing and restorative; relaxing and tonal. Begin to fill your home with texture, tactility and undulating surfaces. Your choice of materials becomes very important – how do they feel? Smell? Does your eye find interest in the apparent movement of the materials surface?

Texture has become a remedy for our senses. Tactility is our relief from the pressure of the screen and the smooth unsympathetic surfaces we endure daily.



ENTRY FEATURES  
DULUX STONE EFFECT  
EUROPEAN STONE.

scarf valerie aston wool  
scarf from craft victoria



DINING ROOM FEATURES  
DULUX PINKHAM (TOP)  
TAVERN (BOTTOM).

linen skirt evas sunday.  
chair domo





LEFT / DINING ROOM  
FEATURES **DULUX PINKHAM**  
(TOP) & **TAVERN** (BOTTOM).

chairs **domo**; small vessel  
**kazari + zigu zagu**; pink bowl  
christopher plumridge from  
craft victoria; light, copper id.

BELOW / WINDOW BOX  
FEATURES **DULUX PINKHAM**.

linen dress **eva's sunday**;  
glass planters **guy mathews**  
**industrial**; ceramic planter  
**anchor ceramics**.

**Take joy in  
nurturing  
edible  
plant life  
from seed  
to plate.**









Raw aesthetics are combined with manmade materials that provide visual interest and tactile qualities under our fingertips.





LEFT / linen skirt *eva's sunday*; bowl *district*.

MIDDLE / bowl *lightly*; vase *la petite fabrique de brunswick* from *craft victoria*.

RIGHT / KITCHEN FEATURES **DULUX HUMBLE FAWN** AND CUPBOARDS IN **WASABI**.

magazine holder *designstuff*; mug, milk pitcher *whitewater furniture & design*; vessels on shelf *craft victoria*.

PERFECTLY

IMPERFECT

TEXTURE

*A wall with perfectly imperfect texture; you find a different part to admire each day as your eyes take in the richness and contrasts of the surface.*





MASTER BEDROOM FEATURES **DULUX**  
**SUEDE EFFECT MACCHIATO MALT**  
AND DOOR IN **PRAGMATIC.**

curtain, bedlinen, throw **hale**  
**mercantile & co**; leather cushion  
on bed **designstuff**; side table **cult**;  
mug **pop & scott**; vessel **bridget**  
**bodenham** from **scout house**.





## Morning Rituals

*You sleep with washed linen, a chunky woolen knitted rug greets your bare feet and handmade ceramics filled with nourishing warmth sit in your palm*





Painted exposed brick is the tactile backdrop as you awaken the senses with unrefined soaps and pure linen towels.



LOFT BEDROOM FEATURES **DULUX VINTAGE BEIGE**, LOFT BED IN **BEIGE MYSTERY** AND BRICKWORK IN **PARCHMENT PAPER**.

cork stool *living edge*; rope basket *mr jason grant* from scout house; bedlinen *hale mercantile & co.*







*Tiers of natural linen  
create beautiful layers for  
your eye to follow, inviting  
you in to rest and restore  
your mind and body.*

# SENTIENCE DETAILS



The feel of linen is quite unique; you can layer it in soft warm hues and shades of griegie for a bed that is always inviting, restful and restorative.

bedlinen, throw *hale mercantile & co*



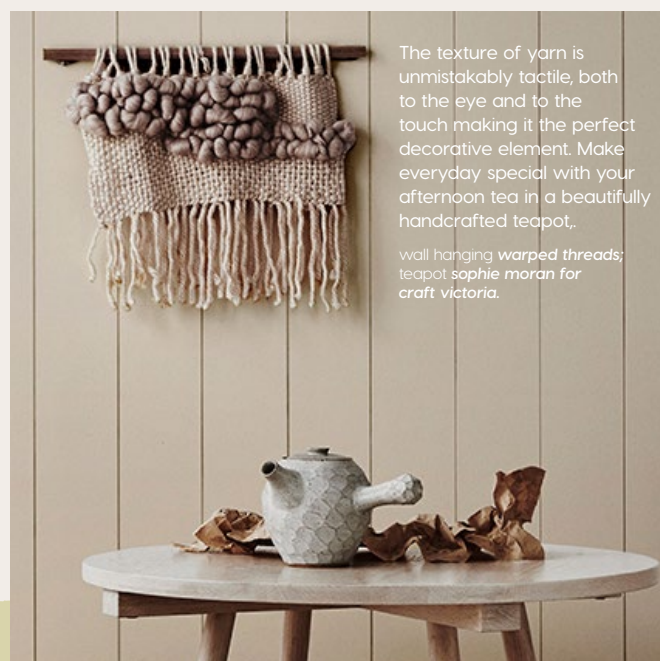
Growing plants, especially edible species that can be nurtured from seed to table, provides an experience that requires you to be hands on whilst also creating a visually stimulating display.

glass planters *guy mathews industrial*; rope basket *mr jason grant* from *scouthouse*; concrete planter *cult*.



Mixed materials such as timber, ceramic, leather and textured fabric set the scene for Sentience, providing tactile elements that invite interaction.

magazine holder *designstuff*; mug, milk pitcher *whitewater furniture & design*; vessels on shelf *craft victoria*.



The texture of yarn is unmistakably tactile, both to the eye and to the touch making it the perfect decorative element. Make everyday special with your afternoon tea in a beautifully handcrafted teapot.

wall hanging *warped threads*; teapot *sophie moran* for *craft victoria*.



# COLOUR PALETTE

---

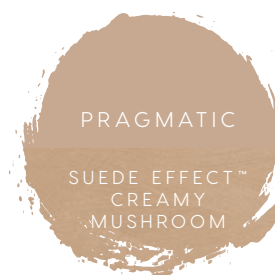


PUPU  
SPRINGS



HUMBLE FAWN

STONE EFFECT™  
EUROPEAN  
STONE



PRAGMATIC

SUEDE EFFECT™  
CREAMY  
MUSHROOM



VINTAGE  
BEIGE



PARCHMENT  
PAPER



WASABI



PINKHAM



LAND LIGHT



BEIGE  
MYSTERY



SELF-DESTRUCT



TAVERN

SUEDE EFFECT™  
ECO CHIC



CENTRE DUSK

SUEDE EFFECT™  
MACCHIATO  
MALT



PINKHAM

WASABI

PRAGMATIC



TAVERN

PARCHMENT PAPER

WASABI

SUEDE EFFECT™  
MACCHIATO  
MALT



PRAGMATIC

TAVERN

LAND LIGHT

SELF-DESTRUCT



STONE EFFECT™  
EUROPEAN STONE

LAND LIGHT

PINKHAM

Subtle pastels and soft naturals make up the Sentience palette. New beiges with a hint of a grey are versatile and will pair easily with the mellow hues of the range. Textures in washed earth tones with *Dulux Suede Effect* will add another dimension to your space.

**Order A4 swatches [here](#).**

## SCHEMES TO TRY

---

# CHROMA

A GRAPHIC VIEW





LOUNGE ROOM FEATURES **DULUX DEEP ARCTIC**, WALL RETURN IN **HAY WAIN**, VASE ON FLOOR PAINTED IN **DEEP ARCTIC** AND SIDE TABLE FINISHED IN **DURAMAX® VIVID WHITE** WITH **BLACK MARBLE EFFECT**.

red chair *cult*; rug, sofa *living edge*; floor lamp *ajar*; teal cushion *meizai*; coffee table *domo*; box *designstuff*; vessels *daggy designs from modern times*; artwork *marnie gilder*; white chair *didier*; black and white cushion *marimekko*.



**Dulux**

**R**epetition in life can be dull. Where once you were inspired by interiors they have become a blur of pale timbers, pastels, white and grey. Although soothing, reassuring and easy to live with – where is the stimulation and the excitement that was once delivered by the images of your social media feed?

We have been visually devouring post-modern references over the past few years and the popularity of these movements is ever increasing. As we move through inspirations from Memphis to Bauhaus and beyond, these references are seeping into our creative minds and from this emerges a style that is distinctly modern and yet very familiar. Harder to identify are the specific references to retro influences, thereby creating a more accessible, contemporary look.

One thing is certain - the view will not be dull. The style is highly chromatic and filled with bold schemes in saturated colour. Peach, melon, yellow, teal and blue form graphic elements dominating the forms that make up interiors. From block colour, shapely furniture and melting objects that seem to have emerged from a Dali-esque artwork to graphic outlines and line-work that create illusions reminiscent of work by Escher – your interior will begin to evolve beyond the mid century post-modern style and into a vivid chromatic retreat.




ABOVE / DINING ROOM FEATURES  
**DULUX BABY MELON.**

shelves **domo**; bowl **modern times**;  
paper lamps **domo**.

RIGHT PAGE / STAIRWELL FEATURES  
**DULUX CARNELIAN.**

rug **living edge**; chair **fanuli**.





A distinctly  
modern style  
that is also  
very familiar.







Partly painted walls in geometric shapes make a bold statement and black outlines are an important furniture detail.



LEFT PAGE / LIVING ROOM  
FEATURES **DULUX SUMMER AIR**  
& **LEXICON QUARTER**, VESSEL  
PAINTED IN **BABY MELON**.

bench *cult*; cushion *linen house*;  
light *meizai*; side table *ajar*;  
rug, corner mirror *whitewater*  
*furniture & design*.

RIGHT / dress *marimekko*.

An unexpected colour with an eclectic collection of furniture creates a quirky casual eating area







LEFT PAGE / DINING ROOM FEATURES **DULUX BABY MELON**, CEILING IN **LEXICON QUARTER**, BULKHEAD IN **HAY WAIN** AND DOOR IN **ESKIMO WHITE**.

black and white chair *dowel jones*; table *whitewater furniture & design*; ceramic planter by *katia carletti from modern times*; shapes *cult*; mustard chair *ajar*; shelves *domo*; bowl *modern times*; paper lamps *domo*.

ABOVE / FEATURES **DULUX DEEP ARCTIC**.

side table *modern times*; artwork *ellie malin from modern times*.



LEFT / KITCHEN FEATURES  
**DULUX LEXICON QUARTER,**  
 KITCHEN WALL IN **ESKIMO**  
**WHITE** AND CUPBOARDS  
 IN **RED CAPITAL** AND  
**BABY MELON.**

tea towel *designstuff*; salt  
 shaker *designstuff*; stool *ajar*;  
 canister *marimekko*;

RIGHT / HALLWAY FEATURES  
**DULUX RED CAPITAL.**

wall light *volker haug*.





An otherwise unassuming kitchen is given personality simply by adding saturated colour to cupboard doors.

BEDROOM FEATURES  
**DULUX CORAL BLOSSOM**  
(TOP) & **BLUE SATIN**  
(BOTTOM), CURVED WALL  
IN **LEXICON QUARTER**.

---

duvet cover, bottom sheet,  
pillows *kip & co.*; duvet  
cover folded over, hex vase  
*designstuff*; black and  
white cushion *bonnie & neil*;  
cushions *linen house*; blue  
rainbow sculpture by *tessy*  
*m king from craft victoria*.





# GEOMETRIC BEAUTY



THIS PAGE / WARDROBE  
FEATURES **DULUX ESKIMO**  
**WHITE** AND WALL AT REAR  
IN **SEA SIGHT**.

cushion, garments *marimekko*.

RIGHT PAGE / BATHROOM  
FEATURES **DULUX MAXIMUS**.

towel *marimekko*.



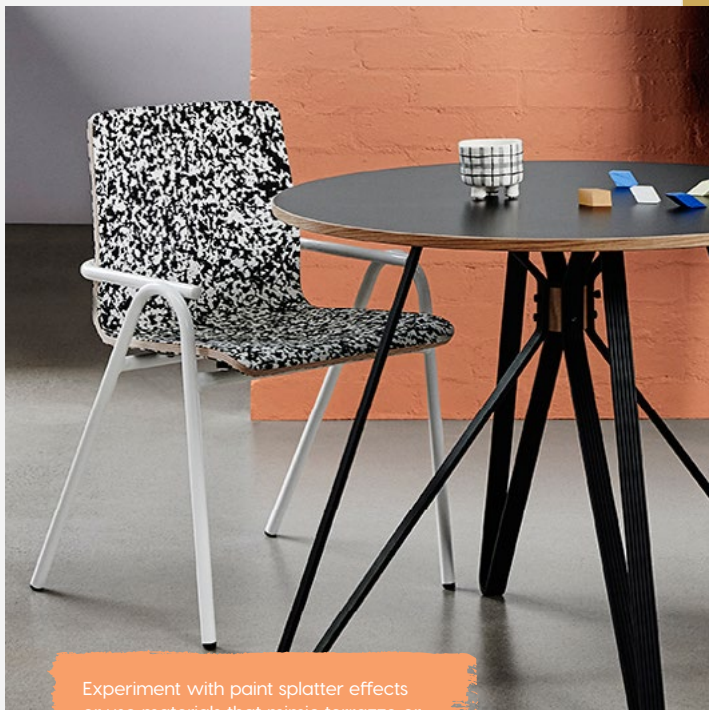




**The perfectly round space is accentuated with blocks of confident colour**

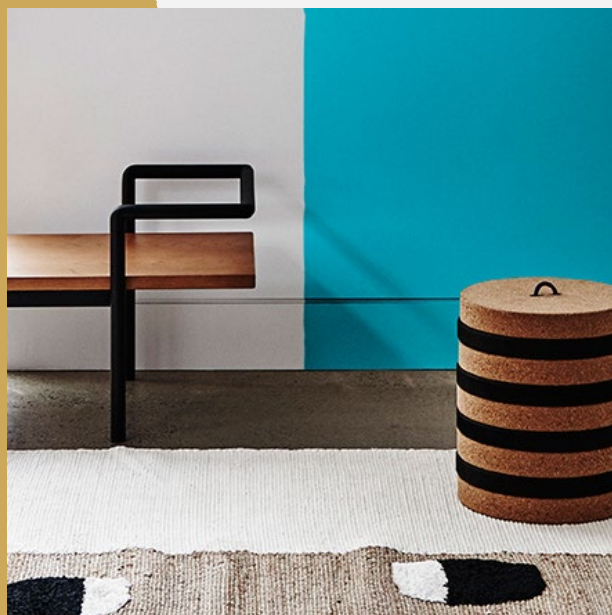


# CHROMA DETAILS



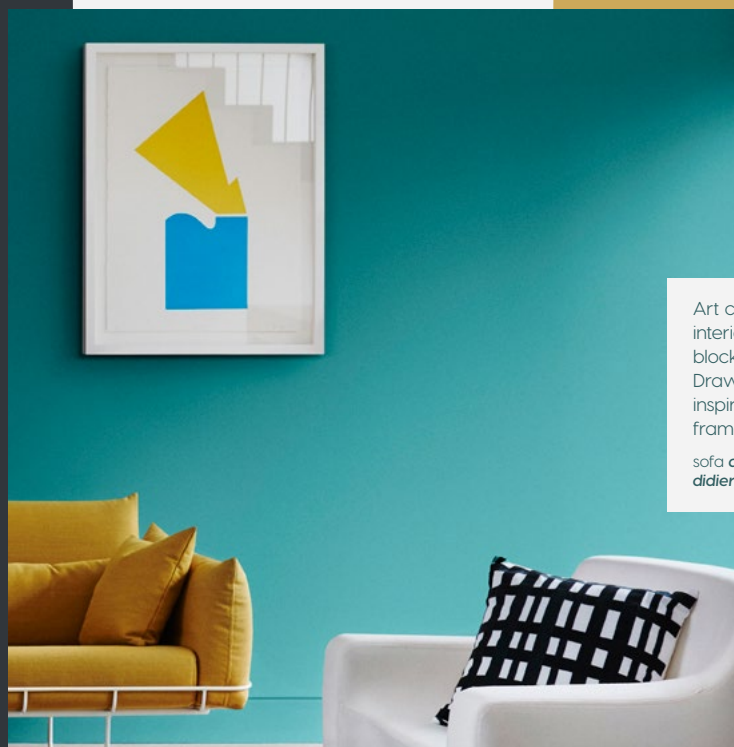
Experiment with paint splatter effects or use materials that mimic terrazzo or other composite materials to draw on the inspiration from the 80s era.

black and white chair *dowel jones*; table *whitewater furniture & design*; ceramic planter by *katia carletti* from *modern times*; *shapes cult*.



Black lines are an important Chroma detail for furniture, paint details and accessories. Add furniture that features black edges or fine black detail on legs and arms for a graphic effect.

bench *cult*; side table *ajar*; rug *whitewater furniture & design*.



Art can play a big part in the Chroma interior – look for artwork that features block shapes and strong linear line work. Draw on other colours in your space for inspiration and use black and white to frame your art.

sofa *domo*; artwork *marnie gilder*; white chair *didier*; black and white cushion *marimekko*.



# COLOUR PALETTE

---



A strikingly chromatic palette in clean and bold colours, saturated hues work alongside softer, greyed-off shades in the Chroma colour collection. Together black and white is an important starting point, whilst more muted tertiary hues are paired with stronger colour to create intriguing combinations.

**Order A4 swatches [here](#).**

## SCHEMES TO TRY

---

# ENTWINE

A COLOURFUL WEAVE





BEDROOM FEATURES **DULUX BUTTERCOOKIE** AND HALLWAY IN **MANILA**, POT PAINTED IN **ARMY FATIGUES**, **BANANA RAMA** AND **COMPLEX BLUE**.

green basket **domo**; tassel throw, sheets, mustard european pillowcase **kip & co.**; burgundy cushion **cult**; lampshade **pop & scott**; terracotta pot on stool **anchor ceramics**; tall yellow vessel **hub**; necklaces **philippa a taylor**; small woven vessels **vicki fowler weaver**; footstool **fenton & fenton**.

**Dulux**



A respectful appreciation for diversity is an important part of how we now live. More frequently than ever we are reminded of the need to strive for equality and to take a global view that extends beyond our backyard. We want to be connected with other cultures, be respectfully inspired by their traditions and unique creative talents.

We look for a connection – something that can create a dialogue between modernity and tradition or seemingly opposing cultures and it's here we find a common element – the simplicity of weaving.

Weaving is a practice we can all find in our heritage. From the simple to the most elaborate methods, it represents a way of connecting and entwining. Our new appreciation for weaving in all its forms signifies the respect of tradition even when approached with modern processes and materials.

This interior style is eclectic and combines many references to varying global cultures with modern pieces featuring weave and rich colour, inspired by landscapes from South America to the middle east. Rich colours such as red, burgundy, brown and oranges are brought together with the zest of bright yellow and blue to form unexpected combinations and diversify the look of a modern interior.



The simplicity of weaving is a way  
of finding a connection between  
modernity, tradition and cultures.



LEFT PAGE / WALL FEATURES  
**DULUX SUEDE EFFECT**  
**TERRAZZO RED**

necklace, earring  
*philippa a taylor.*

THIS PAGE / STAIRWELL  
FEATURES **DULUX SUEDE**  
**EFFECT PALERMO** ON  
STAIRS, FRONT WALL IN  
**PUNCTUATE** AND REAR  
WALL IN **MANILA.**

wire horse sculpture  
*tom ripon from nyary;*  
lights *district;* rug  
*kazari zigu + zagu.*



ENTRY FEATURES **DULUX GOLD PHEASANT** AND  
REAR WALL IN **ARMY FATIGUES**.

ottomans, yellow chair **fenton & fenton**; lights **pet  
lamp studio**.







*Letting the outside in, we  
find woven aspects in details  
throughout the home*

ABOVE / cane lampshades **the orient express**;  
yellow chairs **café culture + insitu**; throw **pop &  
scott**; bowl **cult**; stool **fenton & fenton**.



Biscuit hues add a  
depth to the bedroom  
with layers of textiles  
and a mix of texture







#### BEDROOM FEATURES **DULUX BUTTERCOOKIE.**

armchair *domo*; cushion *linen house*; tassel throw  
kip & co.; coat stand *café culture + insitu*; necklace  
isabel avendano hazbun from craft victoria

#### BELOW / BATHROOM FEATURES **DULUX NOMAD,** STOOL PAINTED IN **COMPLEX BLUE**, POT AND RUG EDGE PAINTED IN **FOREST FRUIT PINK.**

hand towel *top 3 by design*; lampshade *ikea*;  
hanging towel *kip & co.*





**A communal  
area is a  
lively place  
to dine, enjoy  
conversation  
and rich  
colour.**

TABLETOP PAINTED IN  
DULUX **PUNCTUATE.**

glassware top 3 by  
design; basket vicki  
fowler weaver; rug hub.



KITCHEN FEATURES **DULUX ARMY FATIGUES**,  
ARCHWAY INNER IN **COMPLEX BLUE**,  
STAIRWELL AREA IN **ANGEL'S FACE HALF**,  
YELLOW CHAIR PAINTED IN **DULUX BANANA  
RAMA** AND **CARMEN MIRANDA** AND BLUE  
CHAIR PAINTED IN **COMPLEX BLUE** AND  
**ANGEL'S FACE HALF**.

pink and green chairs **district**; burgundy chair  
**cult**; glassware from **top 3 by design**; woven  
basket from **vicki fowler weaver**; rug **hub**;  
lights **pet lamp studio**.





LOUNGE ROOM FEATURES **DULUX**  
**PUNCTUATE**, BASKET PAINTED  
IN **PUNCTUATE** AND **ARMY**  
**FATIGUES**.

artwork **guy maestri**; rug **kip &**  
**co.**; leather side table, bench **cult**;  
yellow plastic vase **nyary**; green  
vessel, cushion **kazari zigu + zagu**.





Tropical plants and woven details create a relaxed style that is full of personality.



WALL PAINTED IN **DULUX GOLD PHEASANT**  
AND VESSEL PAINTED IN **FOREST FRUIT**  
**PINK** AND **COMPLEX BLUE**.

woven vessel *vicki fowler weaver.*

Saturated global-inspired  
colour comes together in  
a space that celebrates  
diversity in style

LOUNGE ROOM FEATURES  
**DULUX PUNCTUATE**, LEFT  
WALL IN **FOREST FRUIT PINK**  
AND FRONT WALL IN **MANILA**.

sofa, coffee table **domo**; blue  
cushion **linen house**; pale pink  
cushion **cult**; yellow cushion  
**linen house**; rug **halcyon lake**;  
purple chair and cushion **cult**.







# ENTWINE DETAILS



Woven threads craft delicate details in the bedroom. Bring together earthy hues and a mix of textiles from velvet to linen to create a relaxing space.

tassel throw, sheets, mustard european pillowcase **kip & co.**; burgundy cushion **cult**; lampshade **pop & scott**.



Coloured glass decor characterises the 70s influence of Entwine and add an eclectic feel to the kitchen.

glassware from **top 3 by design**; woven basket from **vicki fowler weaver**; rug **hub**; lights **pet lamp studio**.



Fill baskets and pots with jungle foliage, set against deep colour. Plants help to create a happy environment and bring a space to life.

artwork **guy maestri**; rug **kip & co.**; basket painted in **DULUX PUNCTUATE** and **ARMY FATIGUES**; leather side table, tall vessel **cult**; small vessel **kazari zigu + zagu**.



# COLOUR PALETTE

---



ANGEL'S FACE  
HALF



MANILA



BUTTERCOOKIE



BANANA RAMA



GOLD  
PHEASANT

SUEDE EFFECT™  
TERRAZZO RED



TEMPRESS



CARMEN  
MIRANDA



PUNCTUATE



FOREST  
FRUIT PINK



ARMY  
FATIGUES



NOMAD



COMPLEX BLUE



BUTTERCOOKIE

BANANA  
RAMA

ARMY FATIGUES

MANILA



ANGEL'S FACE HALF

GOLD PHEASANT

COMPLEX  
BLUE

BUTTERCOOKIE



BANANA  
RAMA

ARMY FATIGUES

MANILA

FOREST  
FRUIT  
PINK

PUNCTUATE



MANILA

TEMPRESS

BUTTERCOOKIE

This eclectic range of colour displays richness and warmth in earthy red and botanical green with unexpected accents. The Entwine palette is influenced by global cultures and landscapes creating a link between modernity and tradition.

**Order A4 swatches [here](#).**

## SCHEMES TO TRY

---

CONSTRUCT

A LUXE FOUNDATION





Focusing  
on materials  
and form  
there is a  
permanence  
to structures  
and a  
simplicity in  
finishes.



Looking for inspiration in the world of interiors can sometimes feel like fishing in a sea of sameness. The throwaway culture of replica designs and cookie-cutter style seen in store after store can be disheartening when you long for a more solid, authentic and honest living space.

You are drawn to architectural periods like Brutalism, focusing on materials and form; where there is a permanence in the structures and a simplicity in the finishes used. The colours feel real, not fleeting or traditional. Geometric shapes from the art of the Bauhaus period dance through your mind and meet. The two influences marry and form a perfect union, a luxury derived not from frivolity, but raw materials, structure and form.

Pared back beauty comes from a rawness found in architectural angles and the use of industrial materials such as concrete, steel and galvanised finishes. These elements combine with subtle, more tonal colour palettes that can create the illusion of depth and accentuate interior details. An atmospheric palette of blues and greys, warmth is found through metallic accents in platinum, copper and rust.

LIVING ROOM FEATURES **DULUX**  
**FIVE FINGERS PENINSULA** AND  
REAR WALL IN **HAURAKI GULF**.

chair *meizai*.

**Dulux**





*Concrete effect helps ground  
the space while texture creates  
interest in an otherwise  
monochromatic scheme.*

LOUNGE ROOM FEATURES  
**DULUX CONCRETE EFFECT**  
**PALE ELEMENTS**, SIDE WALL  
IN **GREY MASTER**, CEILING IN  
**WINTER TERRACE** AND OBJECT  
PAINTED IN **HAURAKI GULF**.

side table *meizai*; rug *behruz*;  
black and geo cushions *voyager*;  
round cushion *designstuff*;  
coffee table *grazia & co*; vase  
*designstuff*; artwork *stefan*  
*gevers from paper empire*.





LIVING ROOM FEATURES  
**DULUX AHOY.**

bench *roger seller*; cushion  
*designstuff*; brass candle  
blocks, resin sculptures  
*criteria collection*; rug *rugs*  
*carpets and design*.

RIGHT PAGE / artwork *stefan*  
*gevers from paper empire*.





A palette of deep inky blues perfectly complement architectural materials such as concrete and steel



**Raw & Refined - geometric forms,  
metallic effects and concrete  
details create minimalist chic.**



DINING ROOM FEATURES  
**DULUX METALLIC EFFECT  
PEWTER ILLUSION.**

pendant light *remodern*;  
chair, objects *ajar*.





**A TONAL**


**PALETTE CREATES**

**UNDERSTATED**

**LUXURY**







THIS PAGE / KITCHEN FEATURES  
**DULUX GREY MASTER** ON  
CUPBOARDS, UNDER BENCH  
IN **AHOY**, RANGEHOOD IN  
**PANDA POD** AND CEILING IN  
**WINTER TERRACE**.

stool *remodern*.

LEFT PAGE / LIVING ROOM  
FEATURES **DULUX FIVE**  
**FINGERS PENINSULA** AND  
REAR WALL IN **HAURAKI GULF**.

chair *meizai*; rug *behruz*.







## Pattern play

*Bauhaus shapes combine with understated colour palettes against a sea of serene blue*

ABOVE / BEDROOM FEATURES  
**DULUX HAURAKI GULF.**

lamp *designstuff*; cushions and  
throw *jennifer + smith*; sheets &  
duvet *linen house*.

LEFT PAGE / BATHROOM  
FEATURES **DULUX RECKLESS  
GREY** AND WALL BEHIND IN  
**GREY MASTER.**





LEFT PAGE / LIVING ROOM  
FEATURES **DULUX METAL SHIMMER**  
**INFINITE DUSK** AND WALL TO  
RIGHT IN **RECKLESS GREY**.

---

side table *scout house*; sculpture  
and chair *criteria collection*.

BELOW / STAIRWAY FEATURES  
**DULUX AHOY**.



*Subtle metallic effects draw  
their inspiration from industrial  
materials such as rusted metals*

# CONSTRUCT DETAILS

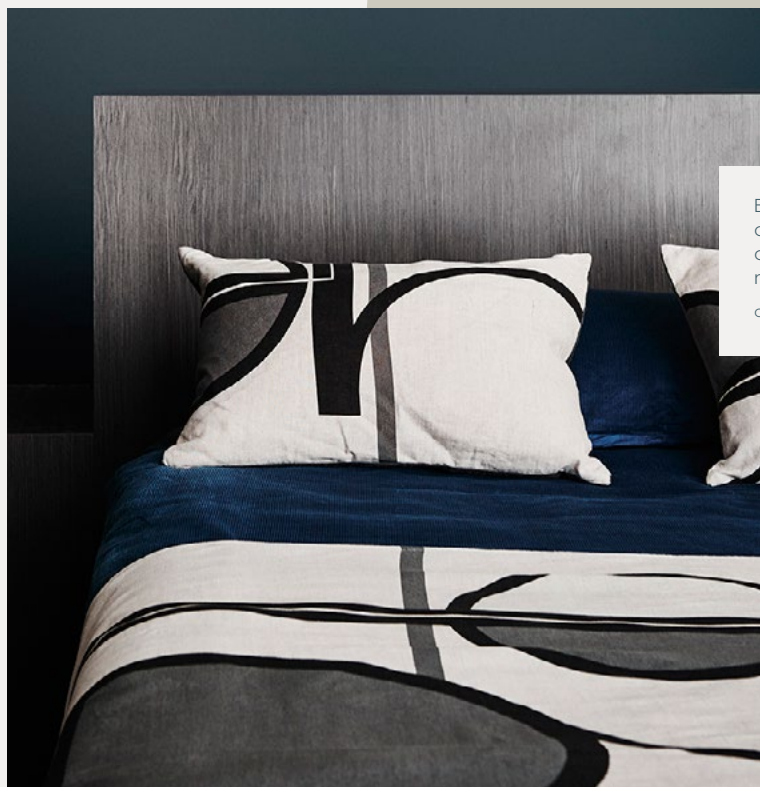
Industrial materials such as glass, concrete and metal are perfect partners for decorative details in the Construct trend. Metals such as bronze, platinum and silver all work beautifully with the grey shades in the palette.

coffee table *grazia & co*; glass vase *designstuff*; concrete objects *remodern*; rug *behruz*; cushion *voyager*.



Bauhaus patterns and shapes in monochromatic colour schemes work effortlessly on linen, in artwork or cushions. Combine with block colour backdrops to maintain the pared-back luxe look.

cushions and throw *jennifer + smith*; sheets & duvet *linen house*.



Copper continues to be a popular metal in accessories and paint details, working perfectly with concrete and palettes of grey and blue or against rust coloured walls.

chair & sculpture *criteria*; side table *scout house*.





# COLOUR PALETTE

---



WINTER  
TERRACE



METALLIC  
EFFECT™  
PEWTER  
ILLUSION



TIRAU DOUBLE



RECKLESS  
GREY

CONCRETE  
EFFECT™  
PALE  
ELEMENTS



GREY MASTER



METAL  
SHIMMER  
EFFECT™  
INFINITE DUSK



PANDA POD



FIVE  
FINGERS  
PENINSULA



HAURAKI  
GULF



AHOY



COPPER  
EFFECT™



METAL  
SHIMMER  
EFFECT™  
OUTER LIMITS



FIVE FINGERS PENINSULA

HAURAKI GULF

COPPER  
EFFECT™



RECKLESS GREY

WINTER TERRACE

METAL SHIMMER  
EFFECT™  
OUTER LIMITS

AHOY



METAL EFFECT™  
PEWTER  
ILLUSION

GREY MASTER

COPPER EFFECT™



TIRAU DOUBLE

AHOY

METAL SHIMMER  
EFFECT™  
INFINITE DUSK

Subtle nuances in greys and neutrals paired with exquisite textures and finishes create this luxurious, architectural palette. Combinations of dark greys are highlighted with the warmth of Copper and Concrete Effects combined with a range of inky blues to add interest to a monochromatic scheme.

*Order A4 swatches [here](#).*

## SCHEMES TO TRY

---

# THANK YOU TO OUR SUPPLIERS

A.JAR	A.JAR.COM.AU
ANCHOR CERAMICS	ANCHORCERAMICS.COM
BEHRUZ	BEHRIZSTUDIO.COM.AU
BONNIE & NEIL	BONNIEANDNEIL.COM.AU
CAFÉ CULTURE INSITU	CAFECULTUREINSITU.COM.AU
COPPER ID	COPPER-ID.COM
CRAFT VICTORIA	CRAFT.ORG.AU
CRITERIA COLLECTION	CRITERIACOLLECTION.COM.AU
CULT	CULTDESIGN.COM
DESIGNSTUFF	DESIGNSTUFF.COM.AU
DIDIER	DIDIER.COM.AU
DINOSAUR DESIGNS	DINOSAURDESIGNS.COM.AU
DISTRICT	DISTRICT.COM.AU
DOMO	DOMO.COM.AU
DOWEL JONES	DOWELJONES.COM
ELISE CAKEBREAD	ELISECAKEBREAD.COM
EVAS SUNDAY	EVASSUNDAY.COM.AU
FANULI	FANULI.COM.AU
FENTON & FENTON	FENTONANDFENTON.COM.AU
FIGGOSCOPE	FIGGOSCOPE-CURATES.COM
GRAZIA & CO	GRAZIAANDCO.COM.AU
GUY MATHEWS INDUSTRIAL	GUYMATHEWSINDUSTRIAL.COM
HALCYON LAKE	HALCYONLAKE.COM
HALE MARCANTILE & CO	HALEMERCANTILE.COM
HUB	HUBFURNITURE.COM.AU
IKEA	IKEA.COM.AU
JENNIFER + SMITH	JENNIFERANDSMITH.COM.AU
KAZARI ZIGU + ZAGU	KAZARI.COM.AU
KIP & CO	KIPANDCO.NET.AU
LIGHTLY	LIGHTLY.COM.AU
LINEN HOUSE	LINENHOUSE.COM.AU
LIVING EDGE	LIVINGEDGE.COM.AU
MARIMEKKO	MARIMEKKO.COM.AU
MARNIE GILDER	MARNIEGILDER.COM
MEIZAI	MEIZAI.COM.AU
MODERN TIMES	MODERNTIMES.COM.AU
NYARY	NYARY.COM.AU
PHILIPPA A TAYLOR	OUCHFLOWER.COM
POP & SCOTT	POPANDSCOTT.COM
REMODERN	REMODERN.COM.AU
ROGERSSELLER	ROGERSSELLER.COM.AU
RUGS CARPETS AND DESIGN	RC-D.COM.AU
SCOUT HOUSE	SCOUTHOUSE.COM.AU
STEFAN GEVERS / PAPER EMPIRE	PAPEREMPIRE.COM.AU
THE ORIENT EXPRESS	THEORIENTEXPRESS.COM.AU
TOP 3 BY DESIGN	TOP3.COM.AU
VICKI FOWLER WEAVER	VICKIFOWLERBASKETS.ETSY.COM
VOLKER HAUG	VOLKERHAUG.COM
VOYAGER	VOYAGERINTERIORS.COM.AU
WHITEWATER FURNITURE & DESIGN	WHITEWATERTRADING.COM.AU



# CREATE THE LATEST TRENDS

## COLOUR SAMPLES

Before making your final colour choice, we recommend testing your colour at home with A4 Colour Swatches or sample pots.

## GET THE LOOK WITH DULUX

We've created this year's trends using a range of products including:



### Wash & Wear®

Get the latest trending colours with Dulux Wash & Wear. Resistance against stains, marks and bacteria and mould, means homes will stay looking clean and fresh for longer than ever before.



### Dulux Aquanamel®

A water based interior and exterior enamel that is non yellowing and dries to a hard wearing finish.



### Design Effects™ Collection

Create the latest tactile, textured look for your home with Dulux Design Effects Collection. This includes Suede Effect, Concrete Effect, Metallic Effect, Stone Effect, Copper Effect and Metal Shimmer Effect.

*Available from November 2016.*

Find out more about how to use Dulux products at [dulux.com.au](http://dulux.com.au)

Colours shown are as close as possible to actual paint colours and design finishes can vary depending on the application.

Due to limitations of your display screen and the printing process, photographic and printed images and swatches may not represent true colour. Colours and images displayed are a guide only. Always confirm your colour choice with Dulux colour chips or Dulux Colour Solutions® Sample pots.

Dulux, Worth doing, worth Dulux, Dulux World of Colour, Duramax, Wash&Wear, the Sheepdog Device, Aquanamel and Lexicon are registered trade marks and Metallic, Suede, Stone, Copper, Metal Shimmer, Concrete, Design Effects are trade marks of DuluxGroup (Australia) Pty Ltd (ACN 67 000 049 427) 1956 Dandenong Road, Clayton, Victoria 3168.

