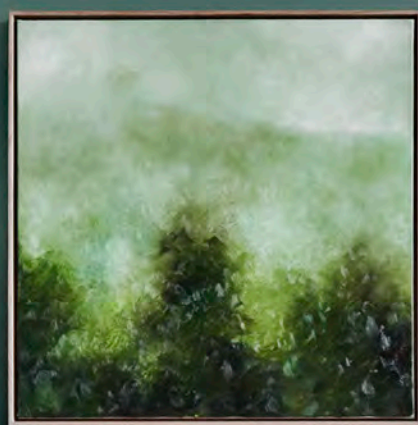


**Dulux®**

Dulux Colour Forecast 2020

# essence



## The *future* of interiors

Colours to *Cultivate*, nurture and regenerate

Eclectic style makes a *Comeback*

Stay *Grounded* with simplicity and warmth

*Indulge* in a rich and decadent escape



**Dulux**

## FROM THE DULUX COLOUR EXPERT



“Colour has the power to completely transform a space – we are seeing it used more and more to help define rooms and evoke certain moods and atmosphere.” – *Davina*



Above  
Davina  
Left  
Cultivate,  
page 48



The Otto  
Chair by  
Tim Webber



Above and right  
Conifera, the COS  
x Mamou-Mani  
installation & the  
Blue is Divine  
installation in the  
Kvadrat San Babila  
showroom.



**T**he colour team at Dulux loves to research, explore and embrace exciting new colour trends. We have officially been colour forecasting for 21 years and 2020 proves to be an inspiration to all colour lovers and design enthusiasts.

We are delighted to share the Dulux Colour Forecast 2020. Here you can explore all the inspiration you need to find your personal colours and understand how colour can transform your space into the perfect retreat – one that's just right for yourself, your family, or those that share your home.

We find new colour trends are always influenced by what's happening in the world around us. This year's theme, Essence, speaks to our collective search for the things that bring us essential happiness. Through diverse and contrasting tonal palettes we find moments of calm and empowerment, as well as optimism and luxury.

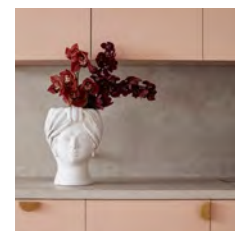
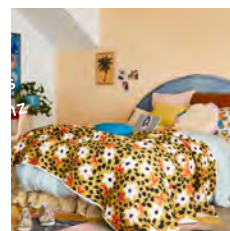
When it comes to curating your own personal space colour can be a defining and expressive element. Building confidence in colour begins by painting a small space and experiencing the aesthetic and ambience created.

We continue to explore beautiful colour combinations that break with tradition to inspire living and work spaces for a personalised and bespoke feel. We hope you enjoy the exciting colour inspiration that our Dulux Colour Forecast 2020 presents.

*Davina*

**Davina Harper**  
Dulux Colour & Design Specialist

### FOLLOW US @duluxnz



# CONTENTS

## USER TIP

*Click/tap on any image  
on the contents page to  
explore the trend.*

## DISCOVER YOUR ESSENCE

06

### CONTRIBUTORS

Meet the faces behind this  
year's Dulux Colour Forecast.

---

08

### ESSENCE

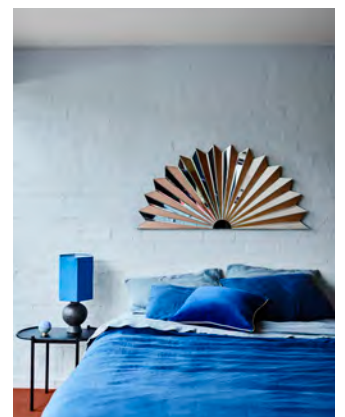
Curate your life through  
colour and style.

---

88

### DIRECTORY

The designers and retailers  
bringing the Dulux Colour  
Forecast to life.





# 10

## GROUNDING

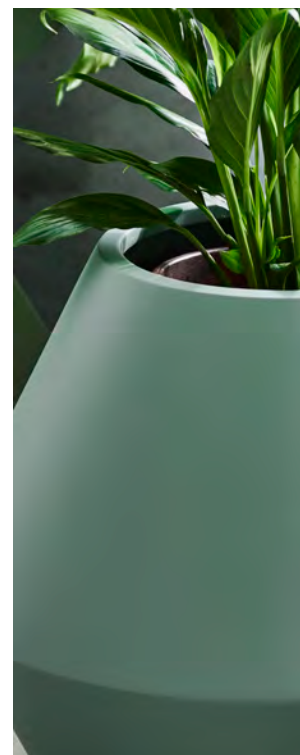
A simple, neutral palette filled with plenty of warmth.

---

24  
DETAILS

25  
PALETTE

26  
GET THE LOOK WITH  
THE GROUNDING TREND



# 28

## COMEBACK

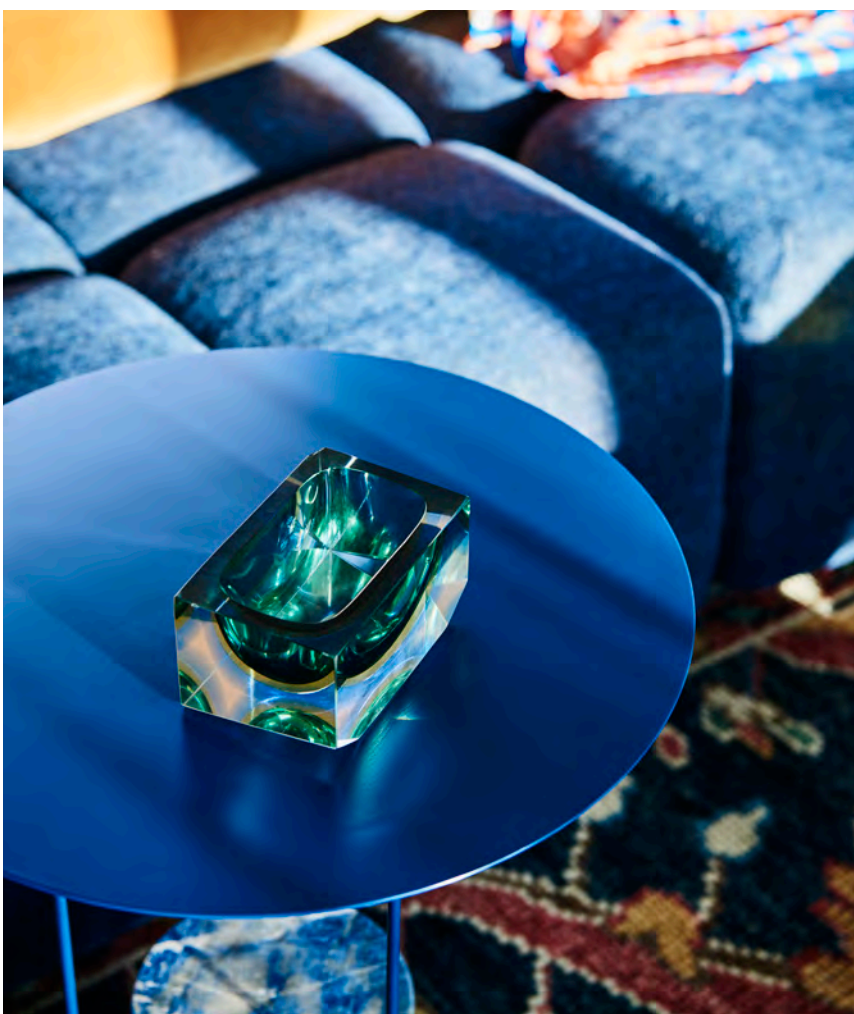
Colours to blend contemporary design with elegant vintage style.

---

44  
DETAILS

45  
PALETTE

46  
GET THE LOOK WITH  
THE COMEBACK TREND





# 48

## CULTIVATE

A tonal green palette to nurture and regenerate.

64  
DETAILS

65  
PALETTE

66  
GET THE LOOK WITH  
THE CULTIVATE TREND

# 68

## INDULGE

Cocoon yourself in this charismatic, immersive and opulent palette.

84  
DETAILS

85  
PALETTE

86  
GET THE LOOK WITH  
THE INDULGE TREND



## CONTRIBUTORS



**DAVINA HARPER**  
*Colour & Design Specialist*  
*Dulux NZ*

---

As part of her role at Dulux, Davina researches colour trends, presenting her findings to media, trade and retail markets. Davina, along with Andrea and Bree, interpret colour trends from across the globe including Milan Design Week, using these findings to develop concepts and insights for the Dulux Colour Forecast.

"I love how confidence in colour is really on the rise and we are seeing stunning combinations that break with tradition and give both living and working spaces are more of a bespoke, personal feel."

My colour highlights for 2020 are Pencarrow and Tauherenikau from the Dulux® Colours of New Zealand® range. Both of these soft greyed-off greens from the Cultivate trend are inspired by nature and very easy to live with. These greens work well with many of the natural materials Kiwis have in their homes such as timber, as well as a wide range of whites and neutrals.

**@DULUXNZ**



**BREE LEECH**  
*Creative Director,*  
*Dulux Colour Forecast*

---

As the Creative Director behind the Dulux Colour Forecast, Bree collaborates closely with Andrea and Davina to create each year's trend predictions. Bringing the trend concepts to life, Bree produces and styles the images and art directs the digital magazine.

Bree is passionate about interpreting interior trends into beautifully styled spaces that are aesthetically appealing and rich in narrative. Her unique talent for styling inspires others to create new styles and looks for their own home spaces. "I love creating an immersive space in the home with rich layers and colours, this year Indulge reflects that for me," she says. Among her top designer pieces: "Fan Mirror by Reflections Copenhagen from Jardan and Bonnie Armchair by Ligne Roset from Domo."

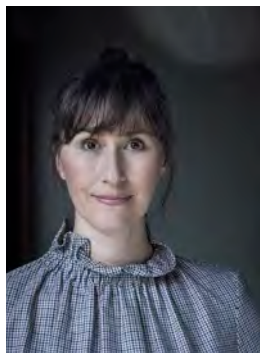
**@BREELEECH**



**ANDREA LUCENA-ORR**  
*Colour & Communications  
Manager, Dulux*

As the Colour Expert for Australia, Andrea works with Davina and Bree, applying her interior design and colour expertise to help shape the Dulux Colour Forecast 2020. "I absolutely love the tonal palettes in the 2020 Forecast and how they capture the imagination with light and shade. My favourite trend is Cultivate as I love the use of greens in interiors, especially Tauherenikau and Jadeite with it's silvery green reminds us of nature. One of my favourite furniture pieces in Cultivate is the Johanna Occasional Chair from Cosh Living. The lush green upholstery is so inviting and works so well with the beautiful surrounding greens and botanicals.

**@DULUXAUS**



**LISA COHEN**  
*Photographer*

Lisa Cohen is an Australian-based photographer specialising in interiors, food, lifestyle and still life. Growing up in a multi-generational family of architects, it was only natural that Lisa develop a love for interiors and design. This led her to London where she worked as a concept stylist on interior magazines before moving into photography. Since then, Lisa has shot interiors, food and lifestyle images for large national brands, small independent clients and magazines worldwide.

**@LISACOHENPHOTO**

## USING THE DULUX COLOUR FORECAST MAGAZINE

Colour can add an exciting new dimension to an otherwise white or neutral space. Not only can colour personalise your special place, it can help you create a specific feel or mood. Your home is your sanctuary, so be courageous with colour and create living spaces that reflect your unique sense of style.

Transforming your personal spaces can begin with the Dulux Most Loved Whites and Neutrals. Once you have selected your perfect white (whether it's a warm or cool white) immerse yourself in the inspiring images from this Dulux Colour Forecast 2020.

Throughout the magazine you'll see our Dulux Highlight colours. Dulux Highlight colours can be added to any of the four palettes to create contrast, highlight key decor items and architectural features, or lift the overall scheme of your space.

Dulux Highlight colours are bold, saturated or vivid and can be used sparingly in small items, as inspiration for other decor, or for whole walls and rooms depending on your preference and taste.

The following pages contain fresh and inspiring colours – and ideas for bringing them into your home. Due to limitations of your display screen and the printing process, photographic and printed images and swatches may not represent true colour. If you love the colours from our trends we recommend you review your selected colours in accurate Colour Chips, large Dulux Colour Swatches or Sample Pots.

## VIEW OFFLINE

Select the download button to receive an interactive PDF of the magazine.

## SWATCHES

At the end of each trend you'll find the full palette of colours, click on the link 'Order large Dulux Colour Swatches here' and it will take you to the Dulux online shop. Here you can order colour swatches to view accurate colours. They are simple to order and delivered direct to your mailbox.

For further colour inspiration view the gallery on the Dulux website under the colour section. You can sort by room type (ie. lounge, kitchen) or via colour. You can also get inspiration for exterior colour schemes.

# essence

**Essence lives at the heart of everything we experience. In 2020, let the Dulux Colour Forecast lead you to the very essence of happiness at home and work.**

**lux**<sup>®</sup>

# essence

Life is busy and complex, layered with digital streams of conversation, information, and time-sensitive tasks. We're always on high alert. We begin to crave that circuit-breaker, the moment that interrupts the torrent and allows us to centre ourselves, breathe and reconnect in a meaningful way.

At the centre of this distraction-free zone we find the essence that makes us feel good and brings us happiness. It's the place where we can live and work in an honest and grounded way, where we can celebrate our

true personality, or remove the demands and distractions to reduce life to the essentials.

The Dulux Colour Forecast 2020 takes us on a journey of personal discovery with diverse and contrasting tonal palettes that offer hints of escapism which can both calm and empower. Striking highlight colours uplift us with their optimism while saturated hues offer luxurious immersion. In 2020, we hope to inspire you to create your ultimate home or work space, one that gets to the very essence of who you are.

Build yourself  
a simple,  
beautiful life.

**Dulux®**

# Grounded



Wall in Dulux Tapawera (left), wall in Lyttelton Quarter (right)

From Left: Round Velvet Cushion in Caramel, Scout House;  
Bentota hand loomed cotton cushion, L&M Home; 'Study 3'  
original artwork by Jess Merlo, Forman Art and Framing; Skagen  
Fringe rug in Ivory, Tribe Home; Odie Chairs, Fomu; Moya Dining  
Table, Tide Design; Edge Sugar Bowl, Cup & Teapot by Skagerak,  
top3 by design; Resin Flow Dish in Riverstone Swirl, Dinosaur  
Designs; Calo Pendant by Pott, Klaylife.





Retreat into the warmth and comfort of simple, familiar home spaces.

**D**o you dream of living a simple, uncomplicated life? Adopting a less-is-more approach, *Grounded* inspires us to move towards a more conscious existence filled with smart living choices, however, without compromising on the beauty, warmth and texture that remains essential to creating our happy place.

We abandon the clutter to opt for a mindful and well-considered approach that heroes comfort, longevity and craftsmanship. Natural materials come into play, evoking new emotion through the raw beauty of texture and tactility. These are offset by a hint of the future with innovative finishes that feel high-tech but still invite the human touch.

The past remains ever-present with the humble addition of cherished vintage items, time-worn textiles and the heart-tugging familiarity of a home-cooked meal.



**Left**

From left: Rug, *Homeowner's*; Hans Wegner 'Keyhole' Rocking Chair, *Angelucci 20th Century*; Scatter Cushion in Nupe fabric by Designs of the Time, *Arthur G.*

**Above**

Wall in *Dulux Knot*, staircase in *Duralloy®*  
Custom Powders match to *Dulux Cardrona*

**Right**

Wall in *Dulux Waitangi*

From Left: (on floor) Pinar Open Weave Bamboo Basket in *Small, Inartisan*; Small Bulb Bowl in *Natural, Safari Living*; Webbing Single Door in *White, House of Orange*; Rug, *Homeowner's*; Sofa, *Homeowners*; Woodrow Spikey Stump, *Fenton & Fenton*; (on cabinet) Ceramic Planter by Ella Waimarie, *Pepite*; Japanese Hagi pottery vase, *Kazari*; Chrysanthemum Vase in glazed ceramic by Nicolette Johnson, *Modern Times*; Flusso Medium Vessel in *White Raku* by Ella Bendrups, *Modern Times*; (on sofa) Missoni Home Throw Wright, *Safari Living*; Scatter Cushion in Nupe fabric by Designs of the Time, *Arthur G.*; Duke Cushion in *Apricot*, Duke Cushion in *Terra, Jordan*.

Product Tip

**Dulux Wash&Wear® Matt** provides a stylish matt finish without compromising on washability or durability.

**DULUX  
HIGHLIGHT**  
Gold  
Pheasant





Wall in Dulux Waitangi, wall in Sandfly Point Double (right)

From Left: (on wall) White Desert Egypt by Chris Sisarich, *Maker's Mrkt*; (on floor) Rug, *Homeowners*; Sofa, *Homeowners*; Woodrow Spikey Stump, *Fenton & Fenton*; Flow Low Table in American Oak, *Jardan*; Hans Wegner 'Keyhole' Rocking Chair, *Angelucci 20th Century*; (on chair) Scatter Cushion in Nupe fabric by Designs of the Time, *Arthur G*; Fire Set by Eldvarm, *top3 by design*; (on sofa) Missoni Home Throw Wright, *Safari Living*; Scatter Cushion in Nupe fabric by Designs of the Time, *Arthur G*; Duke Cushion in Apricot, Duke Cushion in Terra, *Jardan*; Scatter Cushion in Guman fabric by Designs of the Time, *Arthur G*; Duke Cushion in Apricot, *Jardan*; Scatter Cushion in Nupe fabric by Designs of the Time, *Arthur G*; (on coffee table) Ceramic Styrene Mug by Kirsten Perry, *Pepite*; Books, *The Shelley Pantan Store*; Sculptural Ceramic Vase by Vivienne La, *Pepite*; Ceramic Bubble Vase by Kirsten Perry, *Pepite*; (on joinery) Triangle Lampshade in Ivory and Cone Lamp Base in White, *House of Orange*; Speckled Clay Vase Round in Medium, *House of Orange*; Ceramic Kandila by Dáša Ceramics, *Pepite*; Tribute Vessel, *Formantics*; Glass Cloche, *Scout House*.



Styling Tip

Break up your neutral schemes with a Dulux highlight colour. We recommend choosing rugs, cushions and artworks to feature your highlight.

Personalise your  
interiors with  
tactile finishes  
and textured  
forms that  
please the eye.

---

From left: Webbing Single Door in White, *House of Orange*; Ceramic Planter by Ella Waimarie, *Pepite*; Japanese Hagi pottery vase, *Kazari*; Chrysanthemum Vase in glazed ceramic by Nicolette Johnson, *Flusso Medium Vessel in White Raku* by Ella Bendrups, *Modern Times*.

**Right**  
**Wall in Dulux Lyttelton Quarter (left),**  
**wall in Tapawera (right)**

From Left: (on bench) Scatter Cushion in Guman fabric by Designs of the Time, *Arthur G*; Round Velvet Cushion in Caramel, *Scout House*; (on floor) Skagen Fringe rug in Ivory, *Tribe Home*; Moya Dining Table, *Tide Design*; Odie Chairs, *Fomu*; Tote Floor Lamp, *Tide Design*; (on table) Edge Sugar Cup and Teapot by Skagerak, *top3 by design* Resin Flow Dish in Riverstone Swirl, *Dinosaur Designs*; Edge Sugar Bowl by Skagerak, *top3 by design*; Calo Pendant by Pott, *Klaylife*.





## Wall in Dulux Glen Murray

From Left: Giant Knot Door Stop, *Scout House*; Lumi Chair, *Tide Design*; November Light Table by Louise Campbell, *K-Five + Kinnarps*; Textured Pod on Folded Base in Mid Fired Ceramic by Kirsten Perry, *Modern Times*; Bubble Textured Tower in Mid Fired Ceramic by Kirsten Perry, *Modern Times*; European Hand Made Papier Mache Colete Wig Doll, *Scout House*; Buddy Table Lamp in Grey by Milk & Sugar, *Designstuff*; Pom Pom Handwoven Basket in Small, Natural Waterhyacinth in Chevron, *Inartisan*.





### Styling Tip

The key to beautiful, minimal interiors is to ensure there is just the right amount of texture. Bring this in through furniture materials such as rattan and textiles in styling.

Wall in Dulux Sandrock Bluff

From Left: Linen Throw Bleached, *House of Orange*;  
Mia Bench Seat, *Heimur Furniture*.



Neutral doesn't have  
to be plain. A few  
handcrafted pieces add  
a touch of sentiment  
and personality.

---

**Wall in Dulux Fantan, ceiling in Cardrona**

From Left: (on floor) Printed Face Lampshade in White and Cone Base in White, *House of Orange*; Fable Lounge Chair, *Didier*; Ace Table in Oak, *Jordan*; Queen sized Nway Bed by Softer Studio, *Lightly*; (on table) Kristina Dam Studio Double Moon Sculpture in White, *Designstuff*; Ferm Living Bendum Box in Marble, *Designstuff*; Perfume bottle, *Scout House*; (on bed) Alpin Throw in Fysk, Flocca Flat Sheets in Cep and Brun, Flocca Pillowcase in Cep, Flocca European Pillowcases in Brun, Flocca Macaron Cushion in Russo, all *Hale Mercantile Co.*

**COLOUR TIP**

Treble Cone Half is the perfect neutral white for the natural finishes in this contemporary bathroom.

**Wall and ceiling in Dulux Treble Cone Half**

From Left: Max Side Table, *Anaca Studio*; Marble Pot with lid, *Kazari*; Natural Olive Oil Stone Soap by Saarde, *Inartisan*; Waffle Hand Towel in Russo, *Hale Mercantile Co.*

**Wall (left) in Ghost Town Quarter,  
door in Dulux Hint of Lavender**

From Left: (on floor) Webbing Coffee Table Medium in Natural, *House of Orange*; Nahla Wool Rug – Berber Rug Collection, *Behruz*; February Table by Thomas Sandell, *K-Five + Kinnarps*; Lucia Lounge Chair, *Trit House*; Books, *The Shelley Pantan Store*; Ceramic Styrene Mug by Kirsten Perry, *Pepite*; (on bench) Lark Nude Throw, *Linen House*; Large Lumbar Cushion in Mato fabric by Casamance, Scatter Cushion in Guman fabric by Designs of the Time, *Arthur G*; (on table) Bright Beads Sphere table light, *Marz Designs*.



Pared-back interiors with a single luxe element help to make your home feel minimal and discerning.

1



2

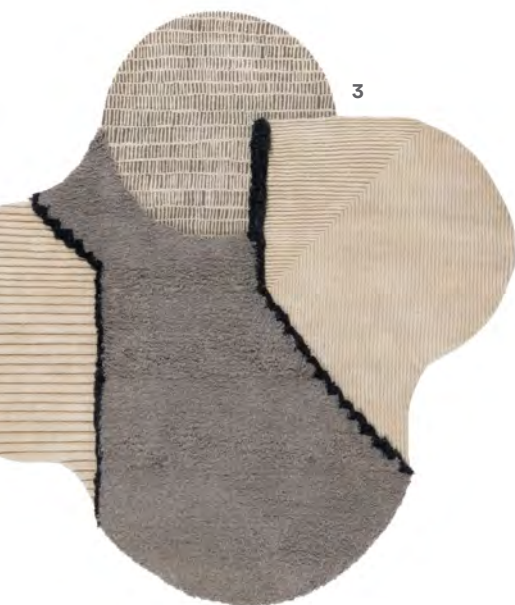


## DETAILS

CREATE THE GROUNDED  
LOOK AT HOME



3



4



5



6



7



1. Bernardes Bench by Andreu Carulla, *Ajar* 2. Brolga Sling Chair, *Koskela* 3. Lunar Addiction rug by Studiopepe, *CC-Tapis*  
3. Brolga Sling Chair, *Koskela* 4. Brixton Patchwork Cushion Cover, *Citta* 5. Bulan Cushion in Rust, *A&C Homestore*  
6. Fulcrum Lamp by Resident, *District* 7. Colony Screen by Skrivo Design for Miniforms, *Design Nation*

# PALETTE

1  
Sandfly Point  
Double

2  
Sandrock  
Bluff

3  
Waitangi

4  
Glen  
Murray

5  
Knot

6  
Fantan

7  
Treble Cone  
Half

8  
Lyttelton  
Quarter

9  
Ghost Town  
Quarter

10  
Hint Of  
Lavender

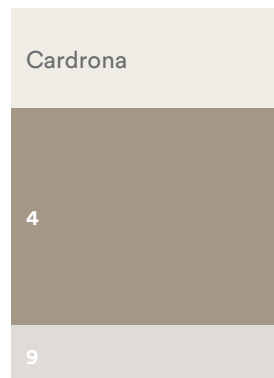
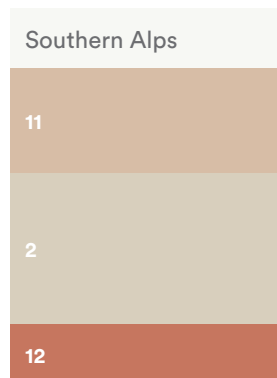
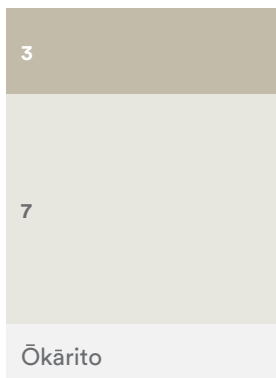
11  
Tapawera

12  
Gold  
Pheasant

13  
Embellished Stone  
Design Stone Effect

A Grounded palette of neutrals  
sees elements of white through to  
caramel unite with muted lavender.  
A soft blush tint and terracotta  
accent add warmth and variety.

## SCHEMES TO TRY





#### COLLECTED AMONG MINIMAL

Pared-back style and precious collectables live in happy harmony – add personal accents with family heirlooms and your favourite flea-market finds.

Details on page 15

Lyttelton  
Quarter

Cardrona

Knot

## GET THE LOOK WITH THE GROUNDED TREND

The Dulux Colour Forecast is about more than just colour – it helps you bring trends to life in your home through styling and accessories. Here we take you through key elements and styling tips for the Grounded trend.

#### MATERIALITY ENRICHES SIMPLICITY

Simple forms are enhanced with honest and authentic materials such as pine, rattan and wool.

Details on page 23

Ghost Town  
Quarter

Hint of  
Lavender

Sandfly Point  
Double

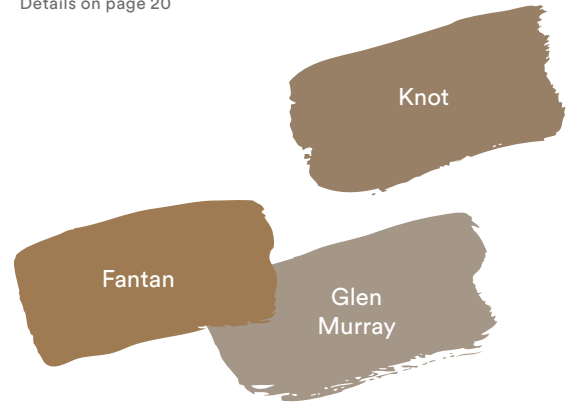




## LAYERS OF TEXTURE

Minimal does not have to mean cold and hard. Textural layers of selected linen and fabrics in tonal hues create a welcoming, comfortable space that is unassuming. The use of rich colour adds to the warmth of a room.

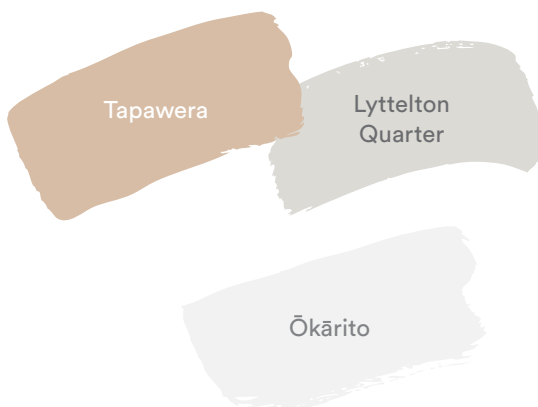
Details on page 20



## ENDURING CRAFTSMANSHIP

Beautifully-made furniture, lighting and decor pieces are featured in the Grounded interior. Designed for longevity, these are the new heirlooms that you'll keep for years to come, contributing to a sustainable future.

Details on page 17



**Dulux®**

# Comeback



Express your  
true colours.

Left

From Left: Panna Cotta Side Table by Ron Gilad for Molteni & Co, *Hub Furniture*; Murano Glass Ashtray Sommerso, Circa 1960, Italy, *Castorina & Co*; Tufty Time Sofa by Patricia Urquiola for B&B Italia, *Space Furniture*; (on sofa) Elk Cushion in Mustard, *Jardan*; Go Georgette Silk Scarf by Bess, *Maker's Mrkt*; Bijar Rug Collection, *Behruz*.

This page

Wall and ceiling in Dulux Southern Alps, Fireplace in Master Blue.

From Left: TZ75 Coffee Table by Werner Blaser for Spectrum, 1960s Netherlands, *Modern Times*; (on coffee table) 'Darkness of Noon' book by Derek Henderson and Kelly Thompson, *Maker's Mrkt*; Murano Glass Ashtray Sommerso, Circa 1960, Italy, *Castorina & Co*; Onda Ottoman by Paola Piva, *Poliform*; Bijar Rug Collection, *Behruz*; Bonnie Armchair by Ligne Roset, *Damo*; (fireplace top right) B Zippy Large Ball Vase Blue, *Jardan*; Flower Vase no.24 in Indigo Blue by Ro, *top3 by design*; Nashville Tealight Holder by Reflections Copenhagen, *Jardan*.





#### COLOUR TIP

Vibrant, clean colours like this striking Master Blue can create a key highlight and in open spaces, help to divide the room into functional zones.



Wall (left) in Dulux Mt Maunganui, Fireplace sides and ceiling in Southern Alps, Fireplace in Master Blue.

From Left: Featherston E254 armchair in burgundy velvet, *Grazia & Co*; Tufty Time Sofa by Patricia Urquiola for B&B Italia, *Space Furniture*; (on sofa) Roy Cushion in Sky, Elk Cushion in Mustard, *Jardan*; Tufty time cushion, *Space Furniture*; Arcolor Side Table by Jaime Hayon for Arflex, *Poliform*; Bijar Rug Collection, *Behruz*; TZ75 Coffee Table by Werner Blaser for Spectrum, 1960s Netherlands, *Modern Times*; (on coffee table) Panama tray by Reflections Copenhagen, *Jardan*; 'Darkness of Noon' book by Derek Henderson and Kelly Thompson, *Maker's Mrkt*; Murano Glass Ashtray Sommerso, Circa 1960, Italy, *Castorina & Co*; (on fireplace left) Dipping Light by Jordi Canudas for Marset, *Ajar*; Terracotta and Pink Striped Vessel, *Formantics*; Onda Ottoman by Paola Piva, *Poliform*; Bonnie Armchair by Ligne Roset, *Domo*; (fireplace top right) B Zippy Large Ball Vase Blue, *Jardan*; Flower Vase no.24 in Indigo Blue by Ro, *top3 by design*; Nashville Tealight Holder by Reflections Copenhagen, *Jardan*.

**Styling Tip**  
Create an interesting collection of objects by playing with different heights, shapes and decor in different materials. Mix it up with books, boxes, vessels and random found objects.

32 Dulux Colour Forecast 2020

**Styling Tip**  
Create an interesting collection of objects by playing with different heights, shapes and decor in different materials. Mix it up with books, boxes, vessels and random found objects.

32 Dulux Colour Forecast 2020

#### Left

##### Wall in Dulux Torpedo Bay

From Left: Featherston E254 armchair in burgundy velvet, *Grazia & Co*; TZ75 Coffee Table by Werner Blaser for Spectrum, 1960s Netherlands, *Modern Times*; (on coffee table) 'Darkness of Noon' Book by Derek Henderson and Kelly Thompson, *Maker's Mrkt*; Murano Glass Ashtray Sommerso, Circa 1960, Italy, *Castorina & Co*; Panama tray by Reflections Copenhagen, *Jardan*; Bijar Rug Collection, *Behruz*; Mouse Shelving Unit in Dulux Electro® Black Ace Flat (powdercoat), *Idle Hands*; (on shelves – Top shelf) B Zippy Medium Oval Vase Blue, *Jardan*; Vase in Dulux Kairākau Beach, *Stylist's own*; (second shelf from top) Shapes Ceramic Vase by Nathan Collis, *Pepite*; Haven Vessel by Reflections Copenhagen, Harlem vase by Reflections Copenhagen, *Jardan*; (middle shelf) Ceramic sculpture by Gidon Bing, *Maker's Mrkt*; Glass vase, *Stylist's own*; Ceramic Column Vases by La Petite Fabrique De Brunswick, *Pepite*; (fourth shelf from top) Torus Vase, Clivo Sculpture, *Trit House*; Blue glass vase, *Stylist's own*; (bottom shelf) Mid-century Italian Murano glass vase, *Castorina & Co*; Books, *Books at Manic*; (on floor) Vase by Bitossi Ceramiche, *Hub Furniture*; Tufty Time Sofa by Patricia Urquiola for B&B Italia, *Space Furniture*; (on sofa) Go Georgetown Silk Scarf by Bess, *Maker's Mrkt*.

#### This page

##### Wall in Dulux Lake Camp

From left: Gridwork Cabinet in Dulux Electro® Black Ace Flat (powdercoat), *Ben-Tovim Design*; (top of console) Table Lamp by Guzzini, 1960s Italy, *Modern Times*; (bottom shelf) Book, *Books at Manic*.

COMEBACK | **Dulux**



Vintage styles  
mix with  
contemporary  
pieces to create  
an eclectic look.

**W**hilst there is a sense of safety in the familiar – something we all crave in highly uncertain times – we cannot ignore the call to break out and express our true selves. Comeback speaks to this innately creative desire, inspiring us to mix contemporary design cues with vintage pieces both elegant and timeless and objects filled with retro-cool. The result – a mix of personality, heritage and sense of home.

Comeback blends eclectic style with vintage charm to create a rich and layered aesthetic that feels expressive in its maximalism and yet reassuringly familiar and homey.

Borrowing from the past we look to the design classics of the 1920s-1950s when the Bauhaus and Arts and Crafts movements were in their heyday. Sentimental throwbacks are woven with flashes of 80s-inspired fun – a timely reminder that the future, whilst unknown, is still positive and bright.



Create an eclectic yet sophisticated look with personal items featured alongside vintage finds and new heirlooms.



**DULUX  
HIGHLIGHT**

Benji's  
Ace

**This page**

Details below

**Right**

**Wall in Dulux Kairākau Beach  
(left), wall in Mt Maunganui,  
ceiling in Southern Alps**

From Left: Sedis Chair by Anaca Studio for Stylecraft, *Anaca Studio*; Ballerina Pedestal Table, *Goldsworthy Studio*; (on table) Shapes Ceramic Cup by Nathan Collis, *Pepite*; Ceramic French Press in Gloss Black by Yield, *Designstuff*; Expanding Earth Original Print by Elie Malin, *Modern Times*.



## STYLING TIP

Create architectural detail where none exists using graphic shapes on your wall.

**DULUX  
HIGHLIGHT**  
Manapouri



Wall in Dulux Torpedo Bay (left and block shape to right), wall in Mt Maunganui (block shape to left and wall to right), ceiling in Southern Alps.

From left: Mouse Shelving Unit in Dulux Electro® Black Ace Flat (powdercoat), *Idle Hands*; (on shelves – top shelf) Vase in Dulux Kairākau Beach, *Stylist's own*; (second shelf from top) B Zippy Circle Top Blue, *Jardan*; (middle shelf) Ceramic Column Vases by La Petite Fabrique De Brunswick, *Pepite*; (fourth shelf from top) Blue glass vase, *Stylist's own*; Clivo Sculpture, *Trit House*; Panna Cotta Side Table by Ron Gilad for Molteni & Co, *Hub Furniture*; Murano Glass Centerpiece by Toni Zuccheri for VeArt, *Castorina & Co*; 'Njosnavelin / I Don't Want to Push it' original artwork by Liam Snootle, *Studio Gallery*; Tufty Time Sofa by Patricia Urquiola for B&B Italia, *Space Furniture*; (on sofa) Roy Cushion in Sky, Elk Cushion in Mustard, *Jardan*.

### Right

Wall in Dulux Torpedo Bay (left and block shape to right), wall in Mt Maunganui (block shape to left and wall to right), ceiling in Southern Alps.

From left: Bijar Rug Collection, *Behruz*; Distance Table Lamp, *Lost Profile Studio*; All others, details as before.



**Wall in Dulux  
Cameo Blue Half**

From Left: Oval Side Table in Black, *Fomu*; (on table) Jewel Orb Blue, *Jardan*; Hexagonal Lampshade in Linen Blue with Stoneware Lamp base in Charcoal, *House of Orange*; Linen Fitted and Flat sheets, standard pillowcases in Quartz, Linen Duvet cover in Agean, *Bedouin Societe*; Blue Velvet Cushion, *Bonnie & Neil*; Fan Mirror by Reflections Copenhagen, *Jardan*.

COMEBACK | **Dulux**







Product Tip

**Dulux Wash&Wear®  
Kitchen&Bathroom**  
has exceptional washability  
and is fortified with a  
powerful mould inhibitor.

Serene yet refreshing,  
Comeback's tonal blue  
palette is right at home in  
the bathroom. Tap into  
the terrazzo revival with  
graphically patterned  
textiles and towels.

---

**Wall in Dulux Tort**

From Left: Side table in Dulux  
Kairākau Beach, *Stylist's own*;  
Haven Vessel by Reflections  
Copenhagen, *Jardan*; Rombo  
Velour Bath Towel by Citta  
Design, *The Shelley Panton Store*.

Wall in Dulux Katikati (left),  
wall in Lake Camp (right)

From Left: Gridwork Cabinet in Dulux  
Electro® Black Ace Flat (powdercoat),  
*Ben-Tovim Design*; (top of console)  
Vase in Dulux Kairākau Beach, *Stylist's  
own*; Murano Barbini Ashtray, 1950  
Italy, *Castorina & Co*; (bottom shelf)  
Book, *Books at Manic*.





**Wall in Dulux Lake Camp (rear), door and ceiling in Southern Alps, wall in Undersea (front)**

From Left: (hallway) Gridwork Cabinet in Dulux Electro® Black Ace Flat (powdercoat), *Ben-Tovim Design*; (top of console) Coloured glassware, *Stylist's own*; Table Lamp by Guzzini, 1960s Italy, *Modern Times*; (bottom shelf) Book, *Books at Manic*; (bedroom) Otto Chair, *Tim Webber Design*; Marble base floor lamp in Dulux Kairākau Beach, *Stylist's own*.

Mix elegant furniture items with retro vintage pieces to create a rich and decorative space.

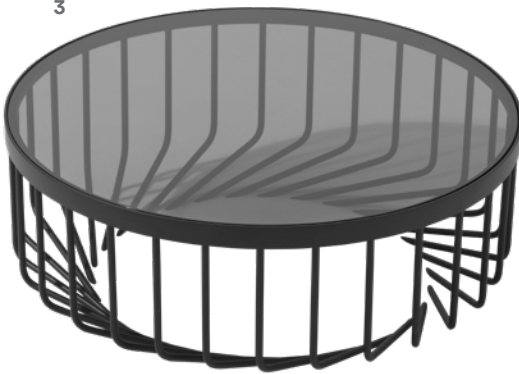
1



2



3



## DETAILS

CREATE THE COMEBACK  
LOOK AT HOME

4



5



6

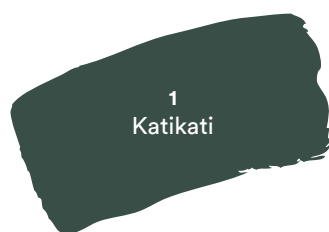


7



1. Willie Cage Dining Table Round with Forest Green Stone top, *Reddie* 2. Honey Pendant, *Coco Flip* 3. Helix Coffee Table by David Moreland, *District* 4. Arc Wardrobe, *Stephen Roy* 5. Nyiri Rug, *Amadi Collection, Halcyon Lake* 6. Nave Armchair by Tom Skeeihan for Skeeihan Studio, *Stylecraft* 7. Cleopatra's Tears Vase #11 by Jasmine Mansbridge, *Fenton & Fenton*

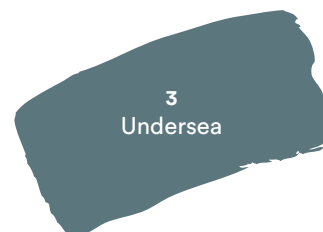
# PALETTE



1  
Katikati



2  
Tort



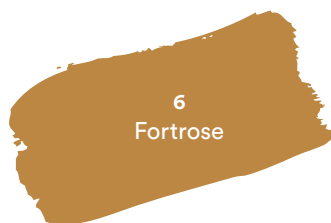
3  
Undersea



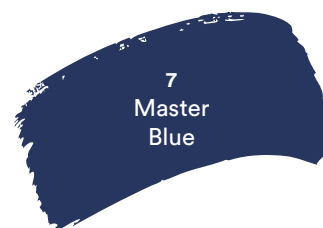
4  
Lake  
Camp



5  
Misty  
Grape



6  
Fortrose



7  
Master  
Blue



8  
Torpedo  
Bay



9  
Kairākau  
Beach



10  
Cameo  
Blue Half



11  
Mt Maunganui



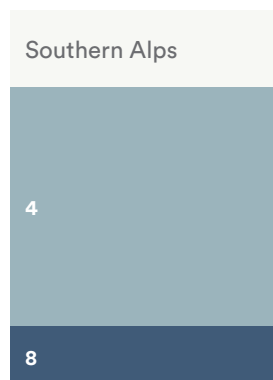
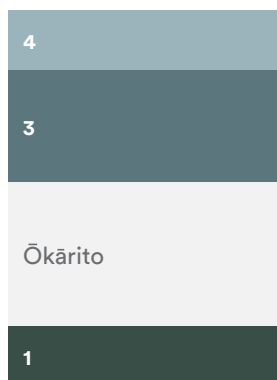
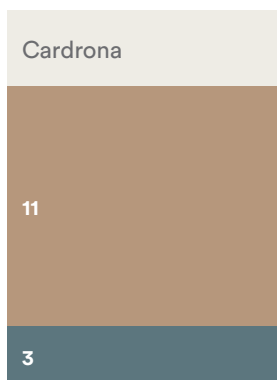
12  
Warmth



13  
Fossil Beige  
Design Suede Effect

Tonal blues draw inspiration from the early 20th century, with warm hues of burgundy, rust and mustard to accentuate that elegant vintage style.

## SCHEMES TO TRY



## GRAPHIC EFFECTS

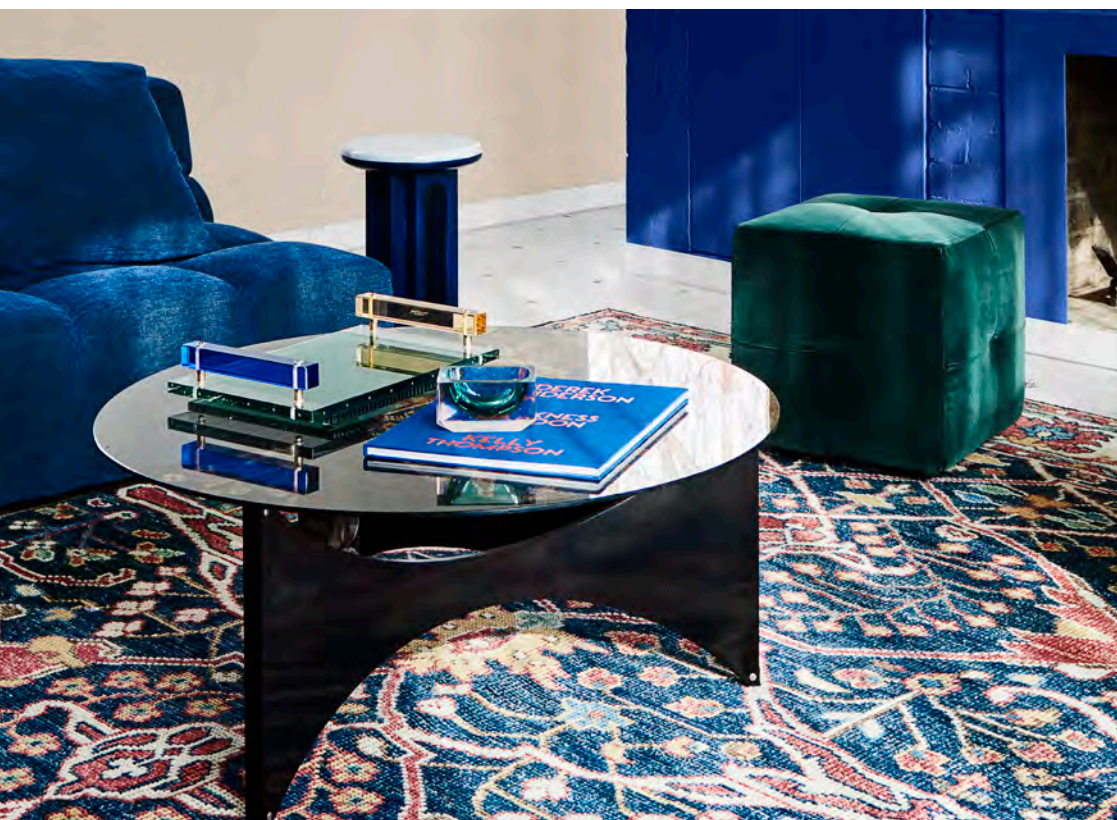
Graphic paint effects add to the maximalist look that makes Comeback so unique. Use contrasting colour or keep it tonal for a more subtle effect. We recommend varying shades of blue, contrast these against shades of terracotta and coffee.

Details on page 36



## GET THE LOOK WITH THE COMEBACK TREND

The Dulux Colour Forecast is about more than colour – it helps you bring trends to life in your home through styling and accessories. Here we take you through key elements and styling tips for the Comeback trend.



## TRADITIONAL PATTERN MEETS MODERN VINTAGE

A rug can bring together all the colour elements in the room. Create an unexpected highlight with a traditional Persian style rug alongside modern retro styles. The look is surprisingly timeless.

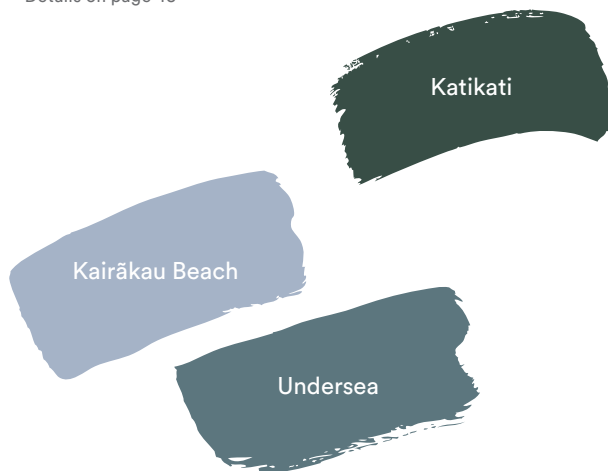
Details on page 31



## RETRO DESIGN DETAILS

Select your modern furniture pieces to reflect popular Comeback styles – Art Deco, mid-century, or pieces with details and shapes that are classically 70s and 80s.

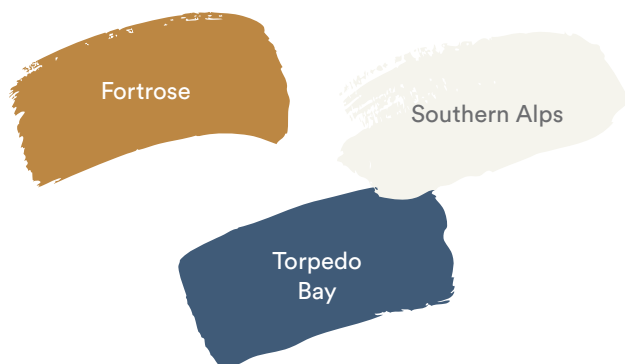
Details on page 43



## UNITING ECLECTIC STYLES

An eclectic mix of decor can be cleverly united through a common colour palette. We recommend varying blues and greens combined with fresh white and accents of purple, red and orange.

Details on page 32



**Dulux**

# Cultivate





# Embrace the romance of slow living.

## Left

From Left: Highlander Rug in Peacock (top), Jenny Jones Rugs; Shibori Rug (bottom), Behruz; Franklin Sofa, *Jardan*; Missoni Home Varadero Cushion, *Safari Living*; Campiello Cushion by Flexform, *Fanuli*.

## This page

Wall in Dulux Hancock (left), wall in Pencarrow (right)

From Left: Highlander Rug in Peacock (top), Jenny Jones Rugs; Johanna Ottoman Small, *Cosh Living*; Odyssey Rug in Moss Green, Jenny Jones Rugs; Planter in Dulux Jadeite, *Stylist's own*; Modern Planter – Round/Triangle (rear), *Tristian Tait*; Ceramic Planter by Mari Masot, *Pepite*; Concrete Planter, *The Plant Society*; Etch Pot in Agave, Cork Plant Stand, *Capra Designs*; Chubby Plant Stand in Black (rear), *Ivy Muse*; Archie Pot in Emerald Terrazzo, Banjo Pot in Agave Terrazzo, *Capra Designs*; Planter in Dulux Jadeite, *Stylist's own*; Menu Wire Flower Plant Pot & Base in Black, *Designsuff*; Plants (all), *The Plant Society*; Esteem Floor Lamp, *Apparentt*; Febo '15 Chaise Longue by Antonio Citterio for Maxalto, *Space Furniture*; Duke Cushion in Olive, *Jardan*; Gathering Manteca throw in Petrol Blue/ Grey/ Pearl White & Green, *Figgoscope Curates*; Shibori Rug (bottom), *Behruz*.

Wall in Dulux Pencarrow (left), wall in Te Aroha (right).

From Left: Johanna Occasional Chair, *Cosh Living*; Fragas Cushion in Moss, *Figgoscope Curates*; Esteem Floor Lamp, *Apparentt*; Mood Side Table, *Dean Norton*; Highlander Rug in Peacock (top), *Jenny Jones Rugs*; Shibori Rug (bottom), *Behruz*; Febo '15 Chaise Longue by Antonio Citterio for Maxalto, *Space Furniture*; Duke Cushion in Olive, *Jardan*; Missoni Home Wicklow Cushion, *Safari Living*; Gathering Manteca throw in Petrol Blue/Grey/ Pearl White & Green, *Figgoscope Curates*; Esteem Coffee Table, *Apparentt*; (on table) Lumen Vessel in Shadow, *Ivy Muse*; Plant (in vessel), *The Plant Society*; Ceramic Planter by Mari Masot, *Pepite*; Books, Avenue Vase, *The Shelley Pantan Store*; Ceramic Cup by James Lemon, *Pepite*; (rear) Planter in Dulux Jadeite, *Stylist's own*; Plant (in planter), *The Plant Society*; Cactus, *Homeowner's*; Franklin Sofa, *Jardan*; Missoni Home Wicklow Cushion, Missoni Home Varadero Cushion, *Safari Living*; Printed Palm Leaves Cushion, *House of Orange*; Campiello Cushion by Flexform, *Fanuli*; 'Peering In (Canopy)' Original artwork by Clare Brodie, *Studio Gallery*; Oskar Rectangular Table by Vincent Van Duysen for B&B Italia, *Space Furniture*; Ria Chairs in Dulux Black & Dulux Yellow Nile, *Something Beginning With*; (on table) Kokeshi Bottle in Green, by Ichendorf Milano, *Jardan*; Tequila Sunrise Bottle in Green by Ichendorf Milano, Seed Large glass vase in Turquoise, *Ethnicraft Oak Burung Storage Cupboard*, *Trit House*; (top of cupboard) Ripple Planter by Ilan El and Made by Pen, *Made By Pen*; Plant (in planter), *The Plant Society*; (top shelf from left) Japanese Ceramic Bowl Large in Green, *Safari Living*; Japanese Celadon Vase Signed Rokubei VI, *Kazari*; (middle shelf from left) Jungle Girl Vase, *The Shelley Pantan Store*; Archie Pot in Emerald Terrazzo (stand only), *Capra Designs*; (bottom shelf) Books, *The Shelley Pantan Store*.





# Cultivate's nature-inspired palette combats the crush of city living with soothing calm.

## COLOUR TIP

Living with green in your home feels so refreshing; the ambiance is soothing, restful and perfect for today's chaotic world.



**T**he time has come for us to nurture and regenerate. To surrender to that urge for escape and to find refuge in the beautiful simplicity of nature. As we disconnect from the harsh white filters of the digital sphere, we find ourselves reconnecting with the very elements of nature: verdant earth, clean air, natural light.

In Cultivate we embrace the romance of slow living, taking pleasure in nature and our ability to nurture, grow and sustain ourselves in simple and small ways.

Personal wellbeing comes to the fore and we seek out the soothing, calm refuge of home where we can rest, re-focus and regenerate. Harmonious influences see modern Japanese minimalism blend with natural green hues offset by enlivening plum and uplifting yellow.

### This page

From Left: Plants (all), *The Plant Society*; Planter in Dulux Jadeite, *Stylist's own*; Odyssey Rug in Moss Green, *Jenny Jones Rugs*; Ferm Living Orb Watering Can in Black, *Designstuff*; Ceramic Planter by Mari Masot, *Pepite*; Concrete Planter, *The Plant Society*; Etch Pot in Agave, *Capra Designs*.

Wall and ceiling in Dulux Te Aroha

From Left: Plant, *Homeowner's*; Green vase in Dulux Jadeite, *Stylist's own*; Oil Vessel in Green Ceramic by James Lemon, Vinegar Vessel in Green Ceramic by James Lemon, *Modern Times*; Oskar Rectangular Table by Vincent Van Duysen for B&B Italia, *Space Furniture*; Ria Chairs in Dulux match to Colorbond® Cove® and Dulux Yellow Nile, *Something Beginning With*; Kokeshi Bottle in Green, by Ichendorf Milano, Tequila Sunrise Bottle in Green by Ichendorf Milano, Seed Large Glass Vase in Turquoise, *Jardan*; Japanese Shigaraki Pottery Tea Jar with Blue and Green Striped Glaze, Meiji period, Early 20th Century, *Kazari*; Plant, *Homeowner's*; Seed Medium Glass Vase in Emerald, *Jardan*; Ceramic planter & plant, *Homeowner's*.





**STYLING TIP**

Feature subtle Japanese styling cues such as black stained timber, handmade ceramics or origami-like textile prints.

Wall in Dulux Tauherenikau (left),  
wall in Hancock (centre and right).

From Left: All plants, *The Plant Society*;  
Mood Side Table, *Dean Norton*; Vessels  
by Bridget Bodenham, *Scout House*;  
Highlander Rug in Peacock (top), *Jenny  
Jones Rugs*; Johanna Occasional Chair,  
*Cosh Living*; Fragas Cushion in Moss,  
*Figgoscope Curates*; 'Rainy Mountain'  
original artwork by Prue Clay, *Forman  
Art and Framing*; Fern Living Orb  
Watering Can in Black, *Designstuff*;  
Odyssey Rug in Moss Green, *Jenny  
Jones Rugs*; Planter (front) in Dulux  
Jadeite, *Stylist's own*; Modern Planter  
– Round/ Triangle (rear), *Tristian Tait*.

**Left**

Ehnicraft Oak Burung Storage Cupboard,  
*Trit House*; Japanese Ceramic Bowl Large  
in Green, *Safari Living*; Archie Pot in  
Emerald Terrazzo (stand only),  
*Capra Designs*.





#### STYLING TIP

Glass top tables are perfect for creating a sense of spaciousness. Their transparency filters light and creates the illusion of space in a room.

#### Wall in Dulux Te Aroha

From Left: (front) Ria Chair in Dulux Yellow Nile, *Something Beginning With*; Oskar Rectangular Table by Vincent Van Duysen for B&B Italia, *Space Furniture*; Kokeshi Bottle in Green by Ichendorf Milano, Tequila Sunrise Bottle in Green by Ichendorf Milano, Seed Large Glass Vase in Turquoise, *Jardan*; (rear) Ethnicraft Oak Burung Storage Cupboard, *Trit House*; (top of cupboard) Ripple Planter by Ilan El and Made by Pen, *Made By Pen*; Plant (in planter), *The Plant Society*; (top shelf from left) Japanese Ceramic Bowl Large in Green, *Safari Living*; Japanese Celadon Vase Signed Rokubei VI, *Kazari*; (middle shelf from left) Jungle Girl Vase, *The Shelley Pantan Store*; Archie Pot in Emerald Terrazzo (stand only), *Capra Designs*; (bottom shelf) Books, *The Shelley Pantan Store*.

DULUX  
HIGHLIGHT  
Zalatown

Wall in Dulux Rousseau Green,  
ceiling and cupboard in Jadeite

CULTIVATE | Dulux

From Left: Unearthed Garden Planter Dish in Sage, *Designstuff*; Plant (in planter), *The Plant Society*; Chair, *Stylist's own*; Terrazzo Dome Hanging Pot in Agave, *Capra Designs*; Plant (in planter), *The Plant Society*; Ferm Living Haze Glass Tray, *Designstuff*; 'The Gardener Says' Book, Traveller's Passport Refills/ Grid Paper, Chrome Pruning Scissors, all *The Shelley Pantan Store*; Crackle Vase V1, *ADesignStudio*; Green Peking Glass Vase, *Kazari*; 'Gumnuts in Pickle Jar' original Artwork by Alix Hunter, *Scout House*; Bloomingville Joelle Mug in Green Stoneware, Bloomingville Metal Vase in Green, *Designstuff*.







#### Wall in Dulux Jadeite

From Left: Evergreen Multi Throw, Bonnie & Neil; Linen Duvet Cover in Moss Green/Reverse Indigo, Flat Cotton Sheet in Native Plantation, Kip & Co; Tree Fern Timber Screen, Bonnie & Neil; Lumbar Upholstery Linen Cushion in Native Plantation, Velvet Cushion in Rainforest, Cushion Cover in Navy Velvet with Tassel, Quilted Pillowcase in Bed Of Roses (rear), Cotton Pillowcase in Native Plantation, Linen Euro Pillowcase in Moss Green, Fitted Cotton Sheet in Native Plantation, all Kip & Co; Bedside Table in Dulux Jadeite, Stylist's own; Crackle Lamp T1 and Crackle Vase V2, ADesignStudio.

**This page**  
**Wall in Dulux Matamata**

From Left: (top shelf) Plant, *The Plant Society*; (middle shelf) Trowel (part of Hessian Gardening Tool Roll), *Scout House*; (bottom shelf) Etch Pot in Agave, *Capra Designs*; Joni Pot, *Ivy Muse*; Plants (in planters), *The Plant Society*; Kristina Dam Wooden Sphere in Oak, *Designstuff*.

**Right**  
**Wall and ceiling in Dulux Herbal**

From Left: Archie Pot in Emerald Terrazzo (pot only), *Capra Designs*; Colosseo Round Service Element in Thyme Green Glossy by Naoto Fukusawa for B&B Italia, *Space Furniture*; Waffle Hand Towel in Cactus Green, *Kip & Co*; Fabrique L'Ancienne Soap, Savon de Marseille Poppy Soap Block, *Scout House*; Waffle Bath/Beach towel in Cactus Green, *Kip & Co*.

CULTIVATE | **Dulux**

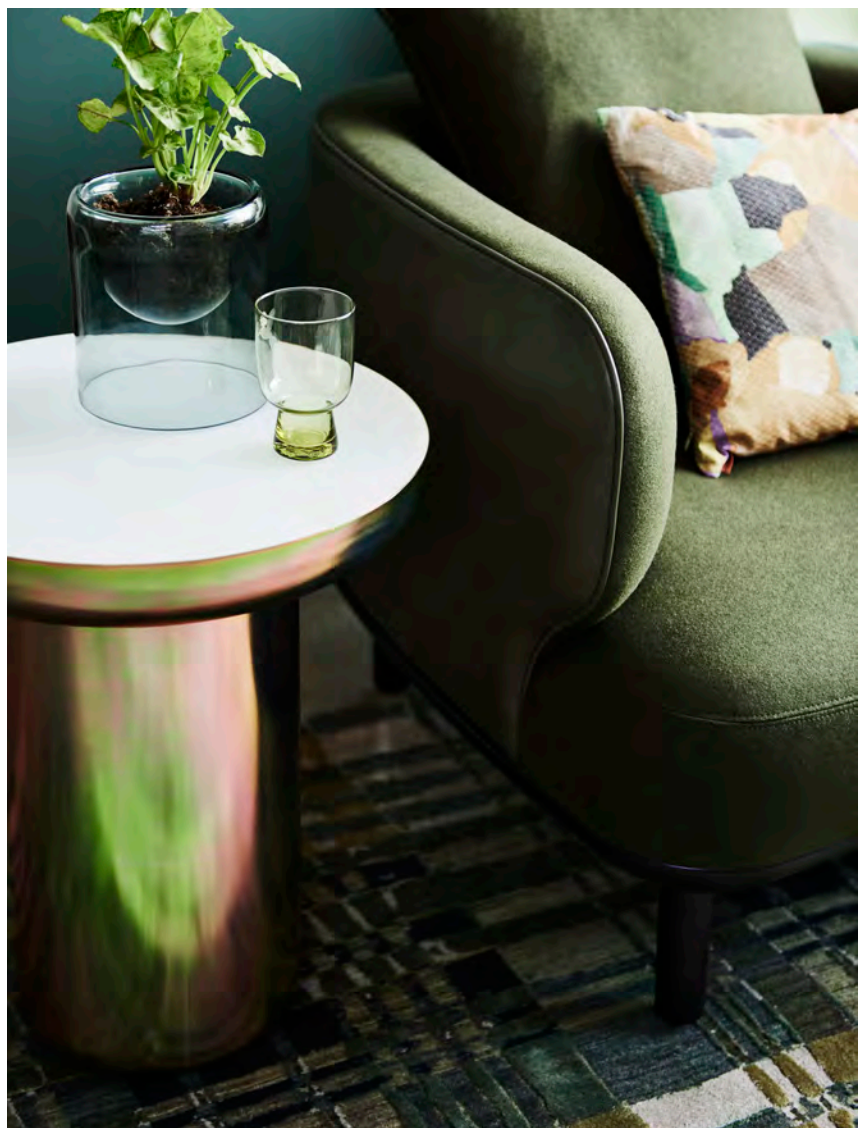




### COLOUR TIP

Painting your spaces in a variety of greens and earthy tones is the perfect way to channel a sense of relaxation and conjure the beauty of New Zealand landscapes.





DULUX  
HIGHLIGHT

Onemana

**Left**  
**Wall in Dulux Priory**

From Left: Botanica Black Cotton Velvet Cushion, Attic Forest square cotton/linen cushion, L&M Home; Attic Forest Lumbar cotton/linen cushion, Nimes Linen Sheet Set in Magnet queen size, Glasshouse Doona Cover in queen size, Belmore Throw in Olive, Circlet Cushion in Ivy, Lena Euro Pillowcase, all *Linen House*; Glass Side Table, *House of Orange*; Menu Carry Lamp Black, *Designstuff*, (in bathroom) Plant, *Homeowner's*.

**This page**  
**Wall in Dulux Hancock**

From Left: Mood Side Table, *Dean Norton*; Lumen Vessel in Shadow, *Ivy Muse*; Plant (in vessel), *The Plant Society*; Chartreuse Engraved Glass in Large, *House of Orange*; Highlander Rug in Peacock (top), *Jenny Jones Rugs*; Johanna Occasional Chair, *Cosh Living*; Missoni Home Wicklow Cushion, *Safari Living*.

Japanese design cues fill our spaces with a sense of harmony, and cultivate a peaceful connection to nature.

Cultivate connects us to nature through colour and pattern, while reminding us to appreciate the simple things – beautiful botanicals, fresh air, natural light.



1



2



## DETAILS

CREATE THE CULTIVATE  
LOOK AT HOME

3



4



5



6



7



1. 'Conversations' original artwork by Divya Bahukhandi, *Forman Art and Framing* 2. Rau Cushion by Penney & Bennett, *A&C Homestore*  
3. Old Chinese Green Glazed Pot extra large, *Fenton & Fenton* 4. Mio Footed Plant Pot by General Eclectic, *Into the Wild Interiors*  
5. Cooper Watering Can, *Stephen Roy* 6. Trix Ottoman by Piero Lissoni for Kartell, *Space Furniture* 7. DL Lounge Chair, *Design by Them*

# PALETTE

1

Tauherenikau

2

Te Aroha

3

Pencarrow

4

Priory

5

Matamata

6

Arrow  
River

7

Rousseau  
Green

8

Jadeite

9

Herbal

10

Hancock

11

Onemana

12

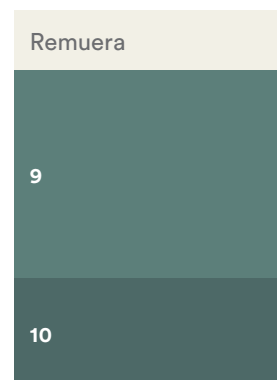
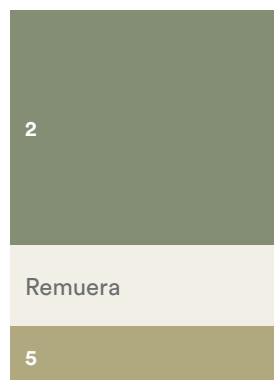
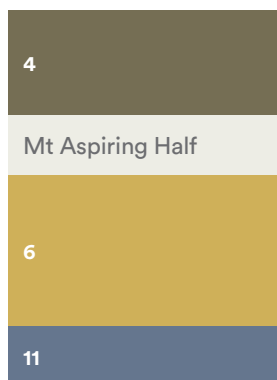
Purple  
Palace

13

Intergrain®  
NaturalStain™  
Driftwood

The tonal greens of Cultivate are inspired by nature. These are interspersed with uplifting pops of chalky blue, deep plum and yellow curd – the perfect contrast.

## SCHEMES TO TRY



## JAPANESE INSPIRED PATTERN

Embrace a mix of Japanese patterns inspired by botanical motifs, traditional florals and origami folds. Layer your rugs and textiles with a common theme to create an interesting feature.

Details on page 49

Te Aroha

Arrow  
River

Tauherenikau



## GET THE LOOK WITH THE CULTIVATE TREND

The Dulux Colour Forecast is about more than just colour – it helps you bring trends to life in your home through styling and accessories. Here we take you through key elements and styling tips for the Cultivate trend.

## TRANSPARENCY

We see the trend of transparency emerging as a strong direction in design. The use of coloured glass or recycled coloured plastics feel uplifting in their optimism. They capture an abundance of light and appear almost weightless.

Details on page 56

Herbal

Te Aroha

Rousseau  
Green



Purple  
Palace

Onemana

Jadeite

#### CLASHING FLORALS

Mix and match any leafy, floral or nature-inspired prints. Your bedroom is the perfect place to experiment with this clashing style. Connect your prints through harmonious colour palettes.

Details on page 58

#### SHIFTING COLOURS

As we embrace nature and its imperfections we also embrace imperfect colour. From hues that subtly shift to appear almost fluid, through to finishes that appear oxidised and change appearance depending on your view.

Details on page 63

Matamata

Remuera

Hancock



*Dulux*

# Indulge

Immerse yourself  
in a lush world  
of colour.





DULUX  
HIGHLIGHT  
Manapouri

Wall in Dulux Ruawai (rear),  
wall in Broadway (front)

From Left: Alasht 27 Rug in Coral/ Beige, Halcyon Lake; Harvey Armchair, Grazia & Co; 'Love' Original Artwork by Scott Petrie, Fanuli; Ilda Coffee Table by J.M Massaud, Poliform; Terracotta Vase, Formantics; Crystal Glass Candle Holder in Amber Diamond, House of Orange; Joy Ottoman, Jardan; Reversible Cotton Knit Throw in Toffee/ Iced Tea by Citta, Trit House.

A photograph of a room with deep purple walls and a white coffered ceiling. A large window with a dark frame and a grid pattern is on the right, with grey curtains. A purple velvet armchair with a gold base and a patterned cushion sits on a purple rug. A brass lamp with a black base and a small table are also visible.

### COLOUR TIP

Jewelled colours help to evoke a sense of nostalgia in a space. Play with deeper purples and ruby reds to create a luxurious appeal.

**D**reaming of an escape? Indulge speaks to our collective desire to disconnect from the mounting challenges of the everyday. A perfect antidote to our busy, high-stress lives, it finds the rose-tinted glasses to reignite our romance with home and hearth.

We cocoon ourselves in comfort with rich layering of luxurious fabric and decadently rounded forms. Hard surfaces are softened with a generous abundance of fringing, chenille and velvet. Hints of Art Deco and 70s retro-futurism add a tinge of nostalgia to high romance.

Hard facts and raw truths for just a moment, are hidden from view as we immerse ourselves in a lush-coloured world of our own making, filled with joy, love and a sense of belonging.

#### Image left

##### Wall in Dulux Deep Exquisite

From Left: New York Round Small Pouf by Jean-Marie Massaud, *Poliform*; Cicladi Side Table by Jacopo Foggini for Edra, *Space Furniture*; Brass table Lamp by Franco Mirenzi for Valenti 1978, *Castorina & Co*; B4 Vase in Pink by ENO Studio, *Trit House*; Hand Tufted Velvet Rug, *Halcyon Lake*; Kelly Armchair in Velvet Aubergine, *Fenton & Fenton*; Cleopatra Cushion, *Elise Cakebread*.

#### Image right

##### Wall in Dulux Russet Tan

From Left: Parchment Rug in All Spice, *Jenny Jones Rugs*; 'Lake George' original artwork by Stefan Gevers, *Studio Stefan Gevers*; Gold Palm Floor Lamp, *The Shelley Panton Store*; Carmen MKII Chair, *Arthur G.*



Indulge is the luxurious  
antidote to our busy,  
stressful lives.

**DULUX  
HIGHLIGHT**

Mulberry  
Taste

## Wall in Dulux Henna Red, ceiling in Southern Alps

From Left: (on floor) Dandy Armchair by Mass Productions, *District*; Wabisabi Rug in Spice, *Jenny Jones Rugs*; Bowry Low Tables by Patricia Urquiola for Cassina, *Space Furniture*; Turn Stool in Terra Rosa Velvet, *Douglas & Bec*; Objects of Free Use by Anna Varendorff, *Homeowner's*; Jay Sofa (Upholstered) in Alpaca Velvet in colour Brick by Mokum, *Arthur G*; (on coffee table) Amethyst Tray, *Fenton & Fenton*; Books, *Books at Manic*; (on side table) Crystal Glass Candle Holder Cube in Amber, *House of Orange*; Glass and spoon, *Stylist's own*; (on mantle) Vase in Dulux Broadway, *Stylist's own*; Bouquet Vase Optic by Ichendorf Milano, *Jardan*; Glass Flower Vase Medium in Matt Peach, *House of Orange*; Clay Vase by Paola Paronetto, *Fanuli*; (on wall) Lilac Moon IV, *original print by Ellie Malin, Modern Times*; (on sofa) Elk Cushion in Mustard, *Jardan*; Cotton Velvet Cushion by Citta, *Trit House*; Elk Cushion in Tangerine, *Jardan*; Christian Fischbacher Puro throw in Marsala, *Fanuli*; (on ceiling) Line Pendant 02, *Douglas & Bec*.





COLOUR TIP

Selecting a decadent colour such as a rich red or earthy brown can add an essence of sophistication while also evoking intimacy and connection.



Wall and Mantel in Dulux Henna Red

From Left: Dandy Armchair by Mass Productions, *District*; Vase in Dulux Broadway, *Stylist's own*; Bouquet Vase Optic by Ichendorf Milano, *Jardan*; Glass Flower Vase Medium in Matt Peach, *House of Orange*.



From Left: Turn Stool in Terra Rosa Velvet, *Douglas & Bec*; Amethyst Tray, *Fenton & Fenton*; Crystal Glass Candle Holder Cube in Amber, *House of Orange*; Glass and spoon, *Stylist's own*; Jay Sofa (Upholstered) in Alpaca Velvet in colour Brick by Mokum, *Arthur G*; Elk Cushion in Mustard, *Jardan*; Cotton Velvet Cushion by Citta, *Trit House*.

Wall in Dulux Trentham,  
ceiling in Cardrona

From Left: Set of four Brass Dining  
Chairs by Willy Rizzo, 1970s Italy,  
*Castorina & Co*; Fly Oval Dining  
Table with Emperador marble top and  
champagne base by Flexform, *Fanuli*;  
Medium Rockpool vase in Shell Pink,  
Tall Rockpool vase in Ivory Swirl,  
and Small Rock jug in Raspberry by  
Dinosaur Designs, *Jardan*.





From Left: Cicladi Side Table by Jacopo Foggini for Edra, *Space Furniture*; Brass table Lamp by Franco Mireni for Valenti 1978, *Castorina & Co*; B4 Vase in Pink by ENO Studio, *Trit House*.

---

Indulge offers a new interpretation on 1970s retro-futuristic style, clashing this with opulent Art Deco vibes.





**Left**  
**Wall in Dulux Pukehina**

From Left: Velvet Tassel Cushion in Apricot, MonCherie quilt cover, *Kip & Co*; Turn Side Table in White Raw Patina, *Douglas & Bec*; Glass Vase in Vieux Rose by Bloomingville, *Trit House*; Neptunia Smaller Side Arm Chair by Arflex, *Poliform*; Velvet Souk Cushion in Apricot, *Kip & Co*; 'Thoughts Creep In' Original Painting by Diana Miller, *Modern Times*.

Wall in Dulux Trentham (right),  
wall and door in Kelburn (left).

From Left: Side table in Dulux Trentham,  
*Stylist's own*; Silk Velvet Cushion in Sorbet  
with Deep Red Trim, *Scout House*; 'Definite  
Possibilities Triptych' original artwork (one  
of three shown), *Carol Batchelor*; Scatter  
Cushions, *Fanuli*; Flores Throw by AYTМ,  
*Designstuff*; Rose Quartz Tray, *Fenton &  
Fenton*; Book, *Books at Manic*.

Combine this rich  
colour palette  
with decadently  
rounded forms.

---

COLOUR TIP

Use a large Dulux Colour Swatch to help you visualise the colour in your space, before trialling it with a sample pot.



**COLOUR TIP**

Create a scheme that's perfect for intimate rooms in your home. Start with a lilac infused pastel and balance its lightness with deeper shades in your textiles and decor.



Embrace soft sunset colours to create emotive spaces that make you want to linger.

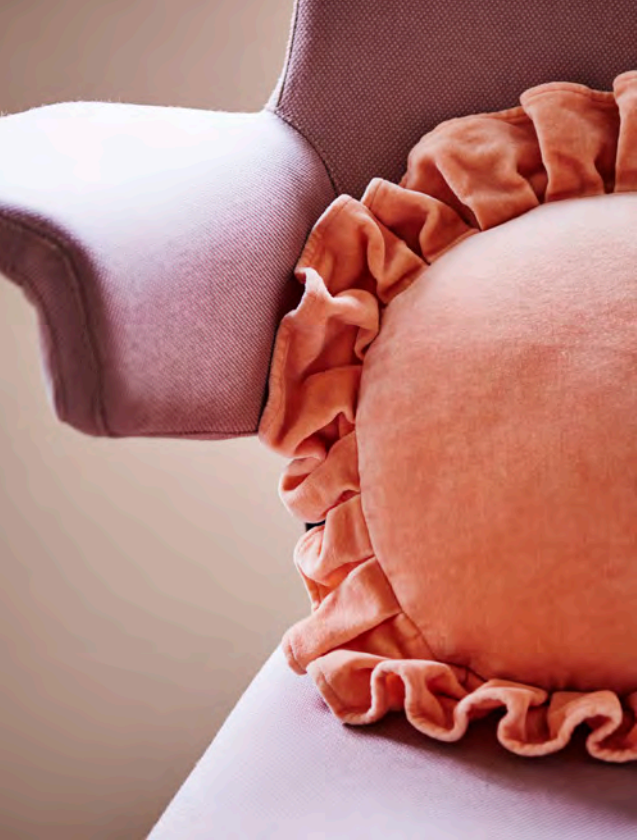
**Right**  
**Wall in Dulux Subtle Violet**

From Left: Line Side Table in Terracotta, *Douglas & Bec*; Bloom Table Lamp by Tim Rundle, *District*; Book, *Books at Manic*; Linen Fitted sheet, flat sheet and standard pillowcases in Rosewater, Linen Euro pillowcases in Wysteria, *Bedouin Societe*; Quilted Velvert Pillowcase set in Clay, *Kip & Co*; Stitched Quilt in Rosewater, *Bedouin Societe*; (on wall) The Masters Light Dahlia by Helen Bankers, *Helen Bankers*.

**This page**  
**Wall in Dulux Subtle Violet**

From Left: Stitched Quilt in Rosewater, *Bedouin Societe*; (on bath) Alice Stripe Terry Towel Bath Towel, *The Shelley Panton Store*; Hub Chair, *Curious Grace*; Silk Velvet Cushion in Orchid with Mauve Trim, *Scout House*; Line Side Table in Terracotta, *Douglas & Bec*; Round vase in Dulux Broadway, *Stylist's own*; Candle holder in Dulux Broadway, *Stylist's own*; Jewellery box in Dulux Trentham, *Stylist's own*; Oval Viscose Rug in Nude, *House of Orange*.





INDULGE | **Dulux**

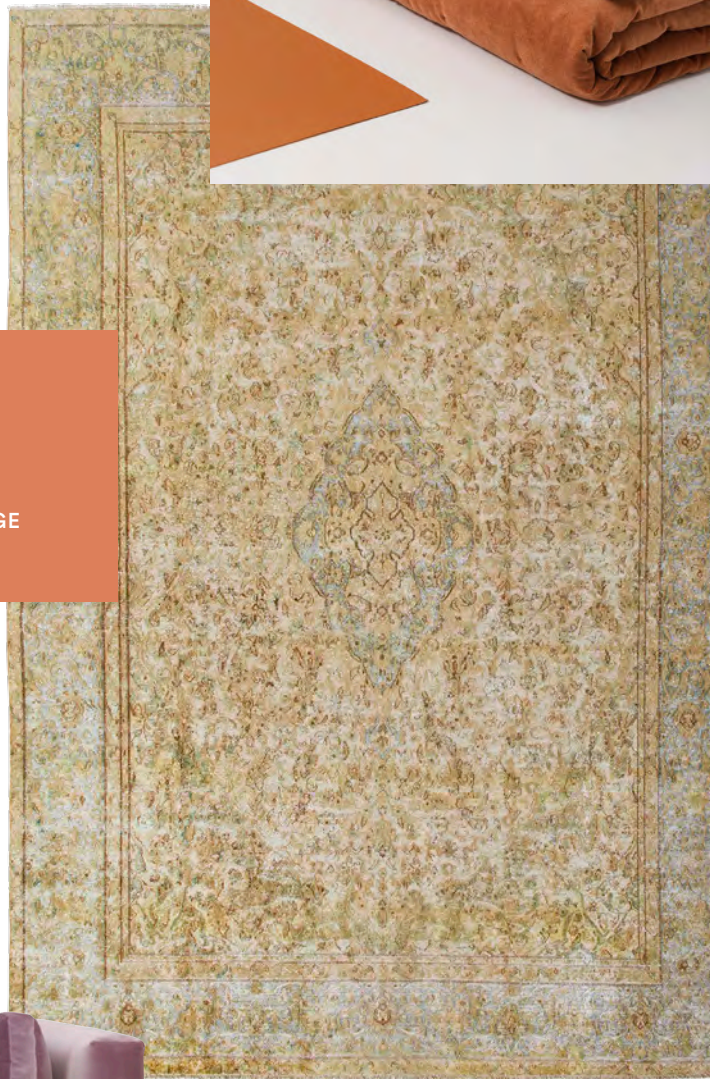


1

2



3



Escape from daily challenges  
with opulent fringing,  
chenilles, velvets and  
enticingly tactile pieces.

## DETAILS

CREATE THE INDULGE  
LOOK AT HOME

4



5



6



1. Greenway Crackle Pendant by ADesignStudio – exclusive range for Lane Crawford, *Local Design*  
2. Cotton Velvet Quilted Bedspread, *Citta* 3. Revive Rug, *Tribe Home* 4. Burel Cushion in Red, *Figgoscope Curates*  
5. Caravan Cushion in Earth, *L&M Home* 6. Hudson 2-Seater Sofa in Velvet Lilac, *Fenton & Fenton*

# PALETTE

1  
Pukehina

2  
Tamaki

3  
Broadway

4  
Ruawai

5  
Rangatāua

6  
Russet Tan

7  
Trentham

8  
Subtle  
Violet

9  
Kelburn

10  
Henna Red

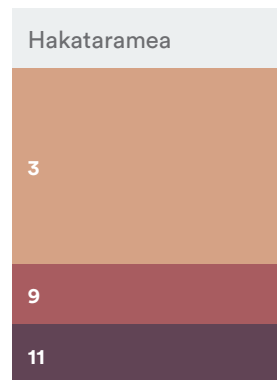
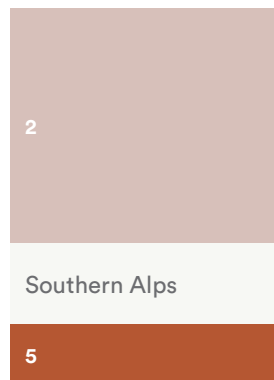
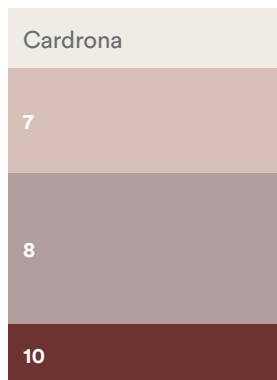
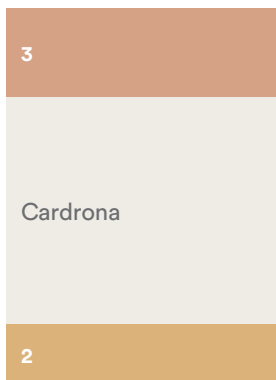
11  
Deep  
Exquisite

12  
Red Rebel

13  
Intergrain®  
NaturalStain™ Teak

Sink into a rich and soothing palette of melon, salmon, brown, red and cosmetic tints. It's the perfect combination to create an immersive and opulent interior.

## SCHEMES TO TRY

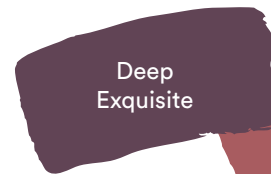
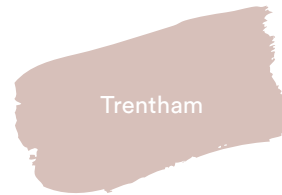




## FRINGING

Opulent details and fabrics such as chenilles and velvets are commonplace alongside fringing, layered drapery and overlapping rugs with carpeted floors.

Details on page 81



## GET THE LOOK WITH THE INDULGE TREND

The Dulux Colour Forecast is about more than just colour – it helps you bring trends to life in your home through styling and accessories. Here we take you through key elements and styling tips for the Indulge trend.

## SUNSET PALETTES

A warm, rich sunset palette helps to create an emotive space designed to make you linger. Focus on toasty shades of burgundy, brown, rich reds and oranges to create a cosy, indulgent place to escape.

Details page 68





Deep  
Exquisite

Subtle Violet

Henna Red

#### IMMERSIVE COLOUR PALETTES

Utilising hues from the same colour family creates an immersive tonal colour palette. Ensure your colours appear exactly as planned by always using Dulux pigments mixed into Dulux Wash&Wear® paint.

Details on page 70

#### DECO SHAPES

Deco details influence decor items such as vessels and furniture. This Deco-inspired vase (on table right) is painted in Dulux Broadway

Details on page 83

Broadway

Trentham

Rangatāua



# DIRECTORY

The designers and retailers bringing the Dulux Colour Forecast to life

<b>A&amp;C Homestore</b>	<a href="http://achomestore.co.nz">achomestore.co.nz</a>	<b>Elise Cakebread</b>	<a href="http://elisecakebread.com">elisecakebread.com</a>
<b>ADesignStudio</b>	<a href="http://adesignstudio.com.au">adesignstudio.com.au</a>	<b>Fanuli</b>	<a href="http://fanuli.com.au">fanuli.com.au</a>
<b>Ajar</b>	<a href="http://ajar.com.au">ajar.com.au</a>	<b>Fenton &amp; Fenton</b>	<a href="http://fentonandfenton.com.au">fentonandfenton.com.au</a>
<b>Anaca Studio</b>	<a href="http://anacastudio.com.au">anacastudio.com.au</a>	<b>Figgoscope Curates</b>	<a href="http://figgoscope-curates.com">figgoscope-curates.com</a>
<b>Angelucci 20th Century</b>	<a href="http://angelucci.net.au">angelucci.net.au</a>	<b>Fomu</b>	<a href="http://fomudesign.com">fomudesign.com</a>
<b>Apparentt</b>	<a href="http://apparentt.com.au">apparentt.com.au</a>	<b>Forman Art &amp; Framing</b>	<a href="http://formanartandframing.com.au">formanartandframing.com.au</a>
<b>Arthur G</b>	<a href="http://arthurg.com.au">arthurg.com.au</a>	<b>Formantics</b>	<a href="http://formantics.co.nz">formantics.co.nz</a>
<b>Bedouin Societe</b>	<a href="http://bedouinsociete.com">bedouinsociete.com</a>	<b>Gidon Bing</b>	<a href="http://gidonbingceramics.com">gidonbingceramics.com</a>
<b>Behruz Studio</b>	<a href="http://behruzstudio.com">behruzstudio.com</a>	<b>Goldsworthy Studio</b>	<a href="http://goldsworthystudio.com">goldsworthystudio.com</a>
<b>Ben-Tovim Design</b>	<a href="http://b-td.com">b-td.com</a>	<b>Grazia &amp; Co</b>	<a href="http://graziaandco.com.au">graziaandco.com.au</a>
<b>Bonnie &amp; Neil</b>	<a href="http://bonnieandneil.com.au">bonnieandneil.com.au</a>	<b>Halcyon Lake</b>	<a href="http://halcyonlake.com">halcyonlake.com</a>
<b>Books at Manic</b>	<a href="http://manic.com.au">manic.com.au</a>	<b>Hale Mercantile Co</b>	<a href="http://halemercantilecolinen.com">halemercantilecolinen.com</a>
<b>Capra Designs</b>	<a href="http://capradesigns.com">capradesigns.com</a>	<b>Heimur Furniture</b>	<a href="http://heimur.com.au">heimur.com.au</a>
<b>Carol Batchelor</b>	<a href="http://carolbatchelor.com">carolbatchelor.com</a>	<b>Helen Bankers</b>	<a href="http://helenbankers.com">helenbankers.com</a>
<b>Castorina &amp; Co</b>	<a href="http://castorina.com.au">castorina.com.au</a>	<b>House of Orange</b>	<a href="http://houseoforange.com.au">houseoforange.com.au</a>
<b>CC-Tapis</b>	<a href="http://cc-tapis.com">cc-tapis.com</a>	<b>Hub Furniture</b>	<a href="http://hubfurniture.com.au">hubfurniture.com.au</a>
<b>Chris Sisarich</b>	<a href="http://chrissisarich.com">chrissisarich.com</a>	<b>Idle Hands</b>	<a href="http://idlehands.design">idlehands.design</a>
<b>Citta</b>	<a href="http://cittadesign.com">cittadesign.com</a>	<b>Inartisan</b>	<a href="http://inartisan.com">inartisan.com</a>
<b>Coco Flip</b>	<a href="http://cocoflip.com.au">cocoflip.com.au</a>	<b>Into The Wild Interiors</b>	<a href="http://intothewildinteriors.com.au">intothewildinteriors.com.au</a>
<b>Cosh Living</b>	<a href="http://coshliving.com.au">coshliving.com.au</a>	<b>Ivy Muse</b>	<a href="http://ivymuse.com.au">ivymuse.com.au</a>
<b>Curious Grace</b>	<a href="http://curiousgrace.com.au">curiousgrace.com.au</a>	<b>Jardan</b>	<a href="http://jardan.com.au">jardan.com.au</a>
<b>Dean Norton</b>	<a href="http://deannorton.com.au">deannorton.com.au</a>	<b>Jenny Jones Rugs</b>	<a href="http://jennyjonesrugs.com">jennyjonesrugs.com</a>
<b>Design By Them</b>	<a href="http://designbythem.com">designbythem.com</a>	<b>K-Five + Kinnarps</b>	<a href="http://kfive.com.au">kfive.com.au</a>
<b>Design Nation</b>	<a href="http://designnation.com.au">designnation.com.au</a>	<b>Kazari</b>	<a href="http://kazari.com.au">kazari.com.au</a>
<b>Designstuff</b>	<a href="http://designstuff.com.au">designstuff.com.au</a>	<b>Kip &amp; Co</b>	<a href="http://kipandco.com.au">kipandco.com.au</a>
<b>Didier</b>	<a href="http://didier.com.au">didier.com.au</a>	<b>Klaylife</b>	<a href="http://klaylife.com">klaylife.com</a>
<b>Dinosaur Designs</b>	<a href="http://dinosaurdesigns.com.au">dinosaurdesigns.com.au</a>	<b>Koskela</b>	<a href="http://koskela.com.au">koskela.com.au</a>
<b>District</b>	<a href="http://district.com.au">district.com.au</a>	<b>L&amp;M Home</b>	<a href="http://lmhome.com.au">lmhome.com.au</a>
<b>Domo</b>	<a href="http://domo.com.au">domo.com.au</a>	<b>Lightly</b>	<a href="http://lightly.com.au">lightly.com.au</a>
<b>Douglas &amp; Bec</b>	<a href="http://douglasandbec.com">douglasandbec.com</a>	<b>Linen House</b>	<a href="http://linenhouse.com.au">linenhouse.com.au</a>

Local Design	localdesign.com.au
Lost Profile Studio	lostprofile.net
Made by Pen	madebypen.com
Maker's Mrkt	makersmrkt.com
Marz Designs	marzdesigns.com
Modern Times	moderntimes.com.au
Pepite	pepite.com.au
Poliform	poliformaustralia.com.au
Reddie	reddie.com.au
Resident	resident.co.nz
Safari Living	safariliving.com
Scout House	scouthouse.com.au
Something Beginning With	sbwaustralia.com.au
Space Furniture	spacefurniture.com.au
Stephen Roy	stephenroy.com.au
Studio Gallery	studiogallerymelbourne.com.au
Studio Stefan Gevers	stefangevers.com
Stylecraft	stylecraft.com.au
The Plant Society	theplantsociety.com.au
The Shelley Panton Store	shop.shelleypanton.com
Tide Design	tidedesign.com.au
Tim Webber Design	timwebberdesign.com
top3 by design	top3.com.au
Tribe Home	tribehome.com.au
Tristan Tait	tristantait.com
Trit House	trithouse.com.au

## Production

### EDITOR & ART DIRECTOR

Bree Leech  
*@breeleech*

### DESIGN & LAYOUT

Jessica Lillico  
*@jess\_lillico*

### PHOTOGRAPHY

Lisa Cohen  
*@lisacohenphoto*

### STYLING & PRODUCTION ASSISTANTS

Kelly Larkin  
*@kellymarielarkin*

Elisenda Russell  
*@elisendasofia\_photography*

**Dulux**

dulux.co.nz  
 Customer service 0800 800 424



**Dulux®**

---

**Worth doing, worth Dulux.**

Due to limitations of your display screen and the printing process, photographic and printed images and swatches may not represent true colour. Colours and images displayed are a guide only. Always confirm your colour choice with Dulux Colour Chips, large Colour Swatches or Dulux Sample Pots.

Dulux, Worth doing, worth Dulux, Wash&Wear, the Sheepdog Device, Aquanamel, Dulux Authentic Colour, Dulux Colours of New Zealand and Intergrain are registered trade marks and NaturalStain are trade marks of DuluxGroup (Australia) Pty Ltd (ABN 67 000 049 427) 1956 Dandenong Road, Clayton, Victoria 3168.