

Ricoh GreenLine™ Series

Remanufactured Products



RICOH
imagine. change.

Help your company achieve full productivity while realizing dramatic savings for your budget and the environment with RICOH's GreenLine Series of MFPs and Printers.

Organizations today are constantly challenged to maximize budgets, optimize technology spending and reduce their environmental impact. These objectives stand true when evaluating and purchasing document production equipment. How can your organization meet these goals without sacrificing performance and workflow efficiency? The answer is simple and the solution is easy to execute with Ricoh GreenLine Series equipment.

The Ricoh GreenLine Series delivers like new MFPs and printers together with cost and environmental savings you can't get when purchasing new equipment.

Real sustainability, reliability and results

Each product offered within the GreenLine Series of certified Ricoh printers and MFPs has been carefully selected, tested, restored and retested to ensure it delivers superb, reliable performance you can count on page after page, day after day. The end result is that you get high-quality systems at a fraction of the cost of new models, all while making a clear statement about your company's commitment to the environment. It's a cost-efficient, eco-friendly solution that contributes to everyone's bottom line — without sacrificing quality or service.

With rigorous remanufacturing standards and a proven process in place, your Ricoh GreenLine Series equipment is designed to perform like new and is serviced only by certified Ricoh technicians.



Ricoh was the first manufacturer to have select remanufactured devices certified to ENERGY STAR specification version 3.1.

Refresh your fleet with the ideal print mix

When it's time to update your document production equipment, the goal is always simple: make sure employees have the right equipment and technology to work most productively, at the lowest cost. Thanks to updated software and firmware, integrating Ricoh GreenLine MFPs and printers into your fleet offers a seamless approach to matching the right output capabilities with the right work groups while freeing up budget for other important investments.

The GreenLine series provides dramatic cost savings over new equipment, while providing the opportunity to upgrade standard printers to MFPs or black and white to color machines. Replacing outdated equipment at a fraction of the cost can bring your office the competitive advantage it needs in the midst of ever-tightening budgets.





Better for business performance and the environment

While your company benefits from reliable performance and high-quality output, your sustainability efforts come out a big winner, too. Resource recirculation makes a much greater ecological contribution to your company than simply recycling. Re-using provides the highest net value of resources and provides a higher return on the energy spent on initial manufacture.

Choosing Ricoh GreenLine products makes a statement to employees, investors and customers that you're serious about sustainable business practices in your organization.

Let's talk about the right equipment mix for your business

Some work groups require Ricoh's most current, cutting edge technology while others simply need reliable output and a low cost per page. We'll work with you to evaluate your overall needs and determine the best equipment mix to accomplish both your business and sustainability goals.

We address every detail to ensure Ricoh GreenLine products work like new

Before it can be remanufactured, every piece of Ricoh equipment must meet strict eligibility criteria. For machines that are selected, certified technicians then complete the following process:

Disassemble & Clean

- Device is disassembled down to its frame
- Sub-assemblies are cleaned and inspected
- Worn, cracked or fatigued parts, circuit boards, power supplies, clutches and drive assemblies are tested and repaired/replaced
- Panels and casings are refinished
- Firmware updates are installed

Rebuild & Retest

- Device is reassembled and tested, with final testing performed by independent inspectors

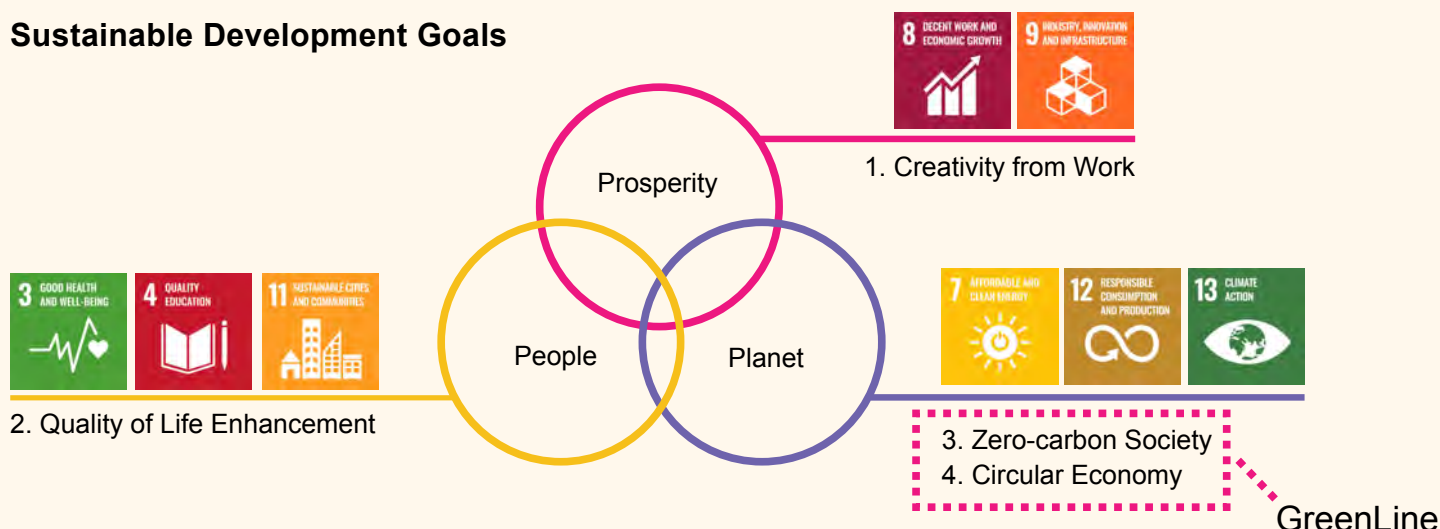
Quality Control

- Device also undergoes standardized safety testing

The GreenLine remanufacturing process is audited and certified annually by The British Standards Institution (BSI).



Sustainable Development Goals



Ricoh's focus: reduce our impact at every step

Since Ricoh's inception, our environmental strategy has been a strong part of our innovative heritage. Ricoh conducts its business with a concurrent focus on People, Prosperity, and our Planet. It is how we materialize our corporate value system and identify solutions our company can provide.

Ricoh is committed to supporting the United Nation's Sustainable Development Goals (SDGs). As part of these SDG initiatives, we are mindful of our responsibility as a corporate citizen.

The GreenLine Series represents Ricoh's maximum efforts for the effective utilization of resources, directly contributing to the Circular Economy and SDGs of Climate Action (13) and Responsible Consumption & Production (12).

For more information visit
www.ricoh-usa.com/en/products/greenline or
 contact your local sales representative.

RICOH
 imagine. change.

www.ricoh-usa.com

Ricoh USA, Inc. 300 Eagleview Boulevard, Exton, PA 19341 | 1-800-63-RICOH

©2022 Ricoh USA, Inc. All rights reserved. Ricoh® and the Ricoh logo are registered trademarks of Ricoh Company, Ltd. All other trademarks are the property of their respective owners. The content of this document, and the appearance, features and specifications of Ricoh products and services are subject to change from time to time without notice. Products are shown with optional features. While care has been taken to ensure the accuracy of this information, Ricoh makes no representation or warranties about the accuracy, completeness or adequacy of the information contained herein, and shall not be liable for any errors or omissions in these materials. Actual results will vary depending upon use of the products and services, and the conditions and factors affecting performance. The only warranties for Ricoh products and services are as set forth in the express warranty statements accompanying them.