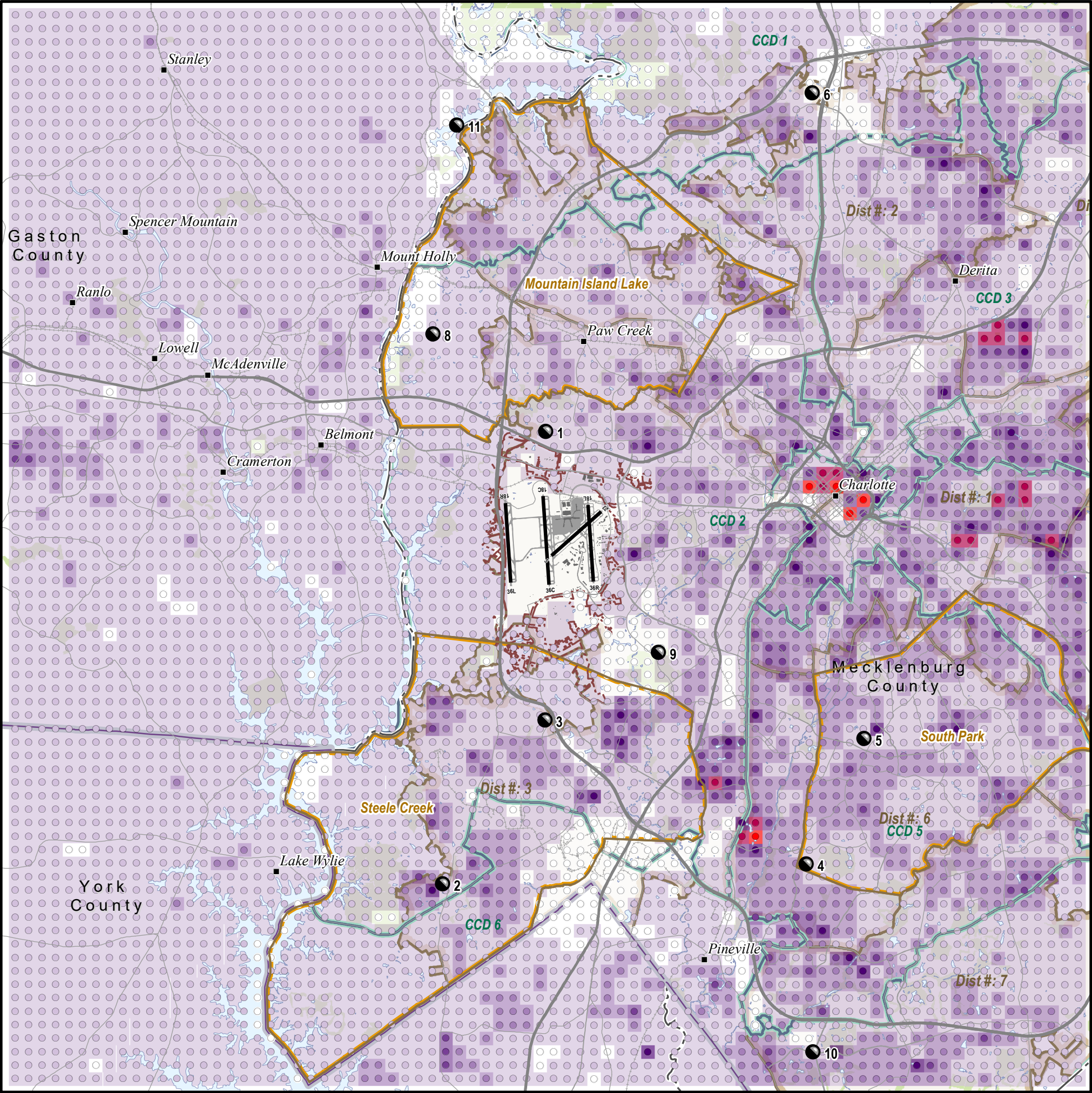


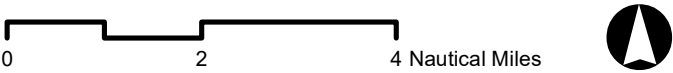
Document Path: G:\Projects\309XXX\309951\_CLT\_Airport\_Community\_Round\_Table\_Support\GIS\309951\_CLT\_Figure34\_Census\_Grid\_Population.mxd



## Population at CLT Grid Analysis Points

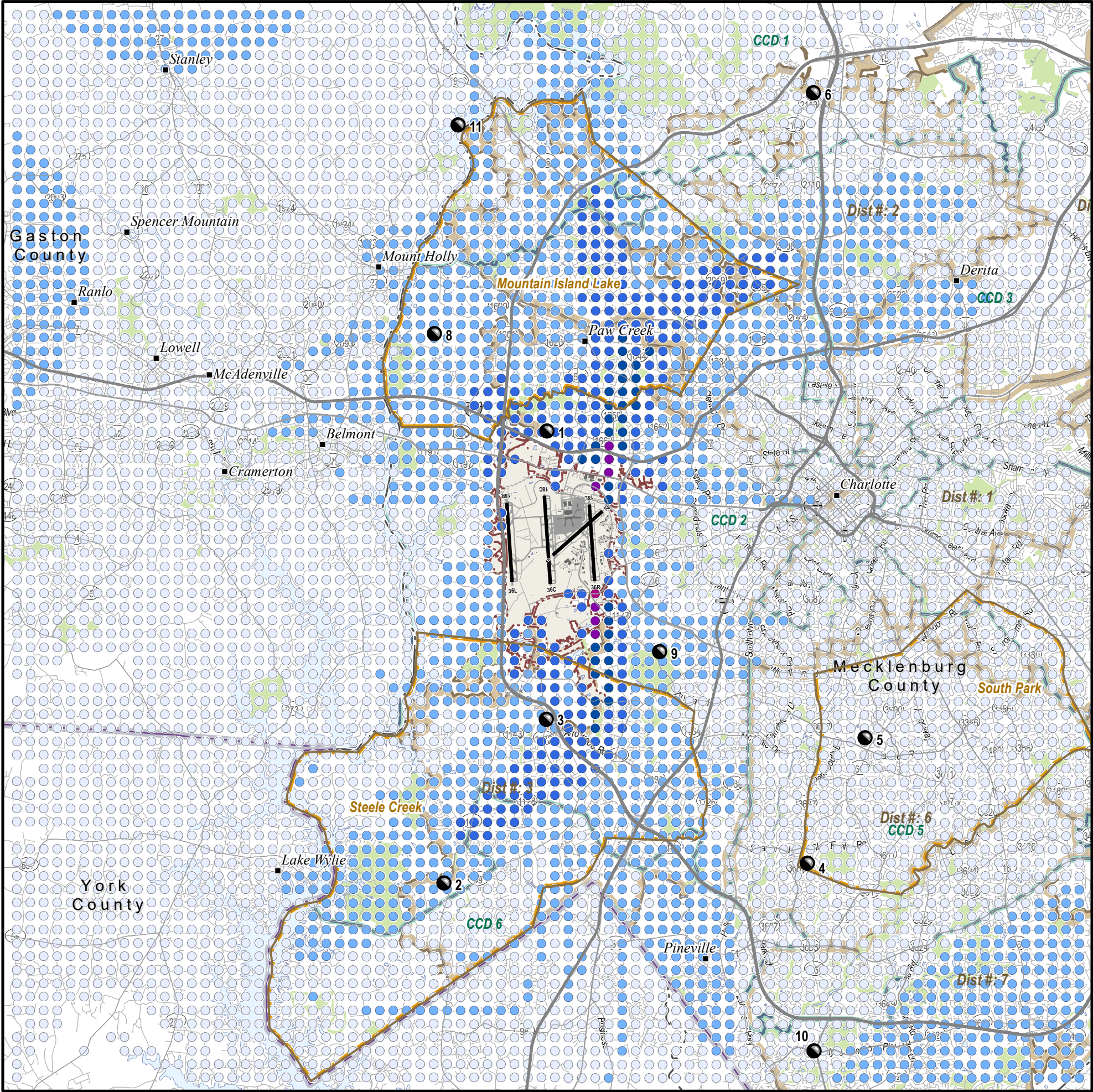
- Runway
  - Airport Boundary (Approximate)
- Grid Census Population Points**
- 0
  - 1 - 200
  - 201 - 400
  - 401 - 600
  - 601 - 800
  - 801 - 1000
  - > 1000
- State Boundary
  - County Boundary
  - Highway
  - Minor Roads
  - Major Roads
  - Railroad
  - Charlotte Regions
  - City Council District Boundaries
  - County Commission Districts
  - Water / Stream
- Landmark Locations**
- |                                 |                         |
|---------------------------------|-------------------------|
| 1 West Mecklenburg High         | 7 UNCC                  |
| 2 Southwest Middle School       | 8 US Whitewater Center  |
| 3 Olympic Community High School | 9 Renaissance Park      |
| 4 Quail Hollow Middle School    | 10 Ballantyne           |
| 5 South Park Mall               | 11 Mountain Island Lake |
| 6 NorthLake Mall                |                         |

Data Source: Mecklenburg County GIS, November 2018, (Parks, Community Points, Lakes, Ponds, Roads); Gaston County GIS, November 2018, (Parks, Community Points); York County GIS, March 2019, (Parks, Community Points); ESRI, 2017, (North American Streets); US Census Bureau, April 2019, (2010 Census Block Population Data); CLT, March 2019, (County Boundary, City Boundary, Charlotte Regions)





Document Path: G:\Projects\309XXX\309951\_CLT\_Airport\_Community\_Round\_Table\_Support\GIS\309951\_CLT\_Figure35\_Lmax\_Grid\_20180101-20181231.mxd



# Lmax Grid Analysis

January 1, 2018 through December 31, 2018

## CLT Baseline Operations

- Runway
- Airport Boundary (Approximate)

### Lmax Grid

- 70.0 - 80.0 dB
- 80.1 - 90.0 dB
- 90.1 - 100.0 dB
- 100.1 - 110.0 dB
- 110.1 - 120.0 dB
- 120.1 - 130.0 dB
- 130.1 - 140.0 dB
- 140.1 - 150.0 dB

- State Boundary
- County Boundary
- Highway
- Minor Roads
- Major Roads
- Railroad
- Charlotte Regions
- City Council District Boundaries
- County Commission Districts
- Water / Stream
- Open Space

- Landmark Locations
- 1 West Mecklenburg High
- 2 Southwest Middle School
- 3 Olympic Community High School
- 4 Quail Hollow Middle School
- 5 South Park Mall
- 6 NorthLake Mall
- 7 UNCC
- 8 US Whitewater Center
- 9 Renaissance Park
- 10 Ballantyne
- 11 Mountain Island Lake

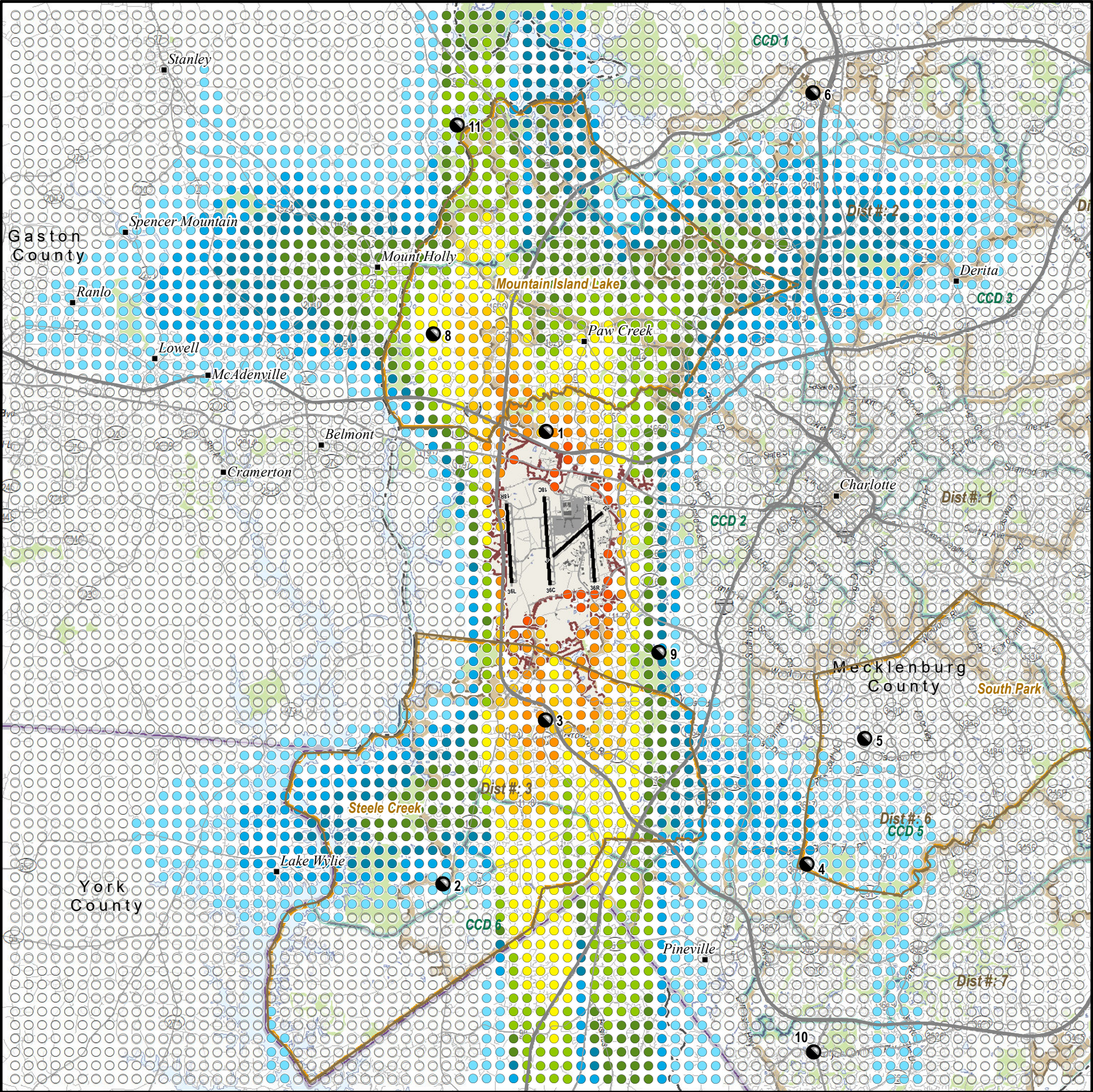
Data Source: Mecklenburg County GIS, November 2018, (Parks, Community Points, Lakes, Ponds, Roads); Gaston County GIS, November 2018, (Parks, Community Points); York County GIS, March 2019, (Parks, Community Points); CLT, March 2019, (County Boundary, City Boundary, Charlotte Regions)

0 2 4 Nautical Miles





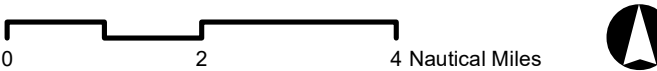
Document Path: G:\Projects\309XXX\309951\_CLT\_Airport\_Community\_Round\_Table\_Support\GIS\309951\_CLT\_Figure36\_Lmax\_70\_Grid\_20180101-20181231.mxd



# Number Above Lmax 70 Grid Analysis January 1, 2018 through December 31, 2018 CLT Baseline Operations

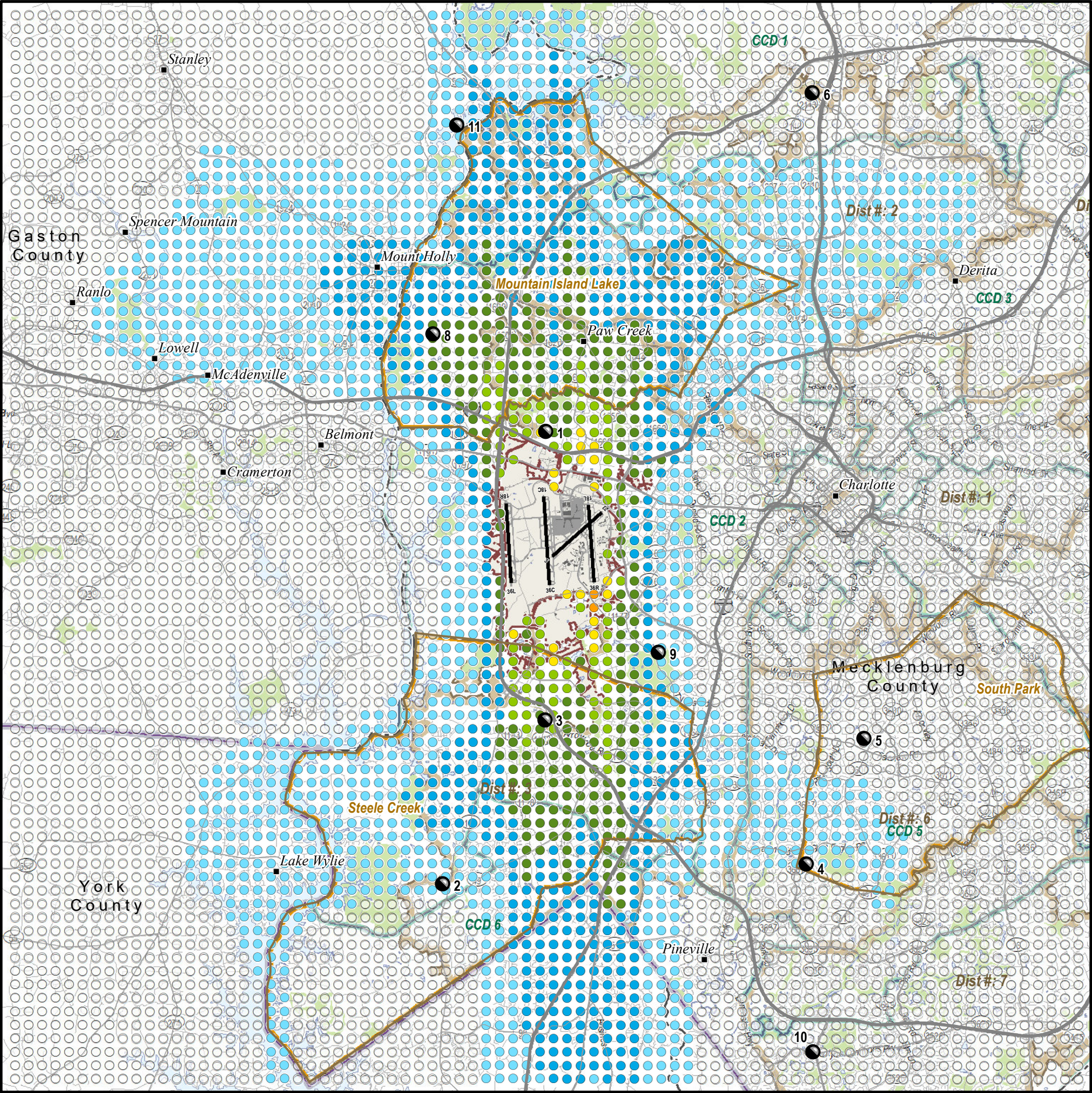
- Runway
- Airport Boundary (Approximate)
- NA 70 Lmax Grid
  - 0-25
  - 26 - 50
  - 51 - 75
  - 76 - 100
  - 101 - 150
  - 151 - 200
  - 201 - 300
  - 301 - 400
  - 401 - 500
  - > 500
- State Boundary
- County Boundary
- Highway
- Minor Roads
- Major Roads
- Railroad
- Charlotte Regions
- City Council District Boundaries
- County Commission Districts
- Water / Stream
- Open Space
- Landmark Locations
  - 1 West Mecklenburg High
  - 2 Southwest Middle School
  - 3 Olympic Community High School
  - 4 Quail Hollow Middle School
  - 5 South Park Mall
  - 6 NorthLake Mall
  - 7 UNCC
  - 8 US Whitewater Center
  - 9 Renaissance Park
  - 10 Ballantyne
  - 11 Mountain Island Lake

Data Source: Mecklenburg County GIS, November 2018, (Parks, Community Points, Lakes, Ponds, Roads); Gaston County GIS, November 2018, (Parks, Community Points); York County GIS, March 2019, (Parks, Community Points); CLT, March 2019, (County Boundary, City Boundary, Charlotte Regions)





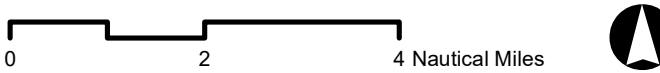
Document Path: G:\Projects\309XXX\309951\_CLT\_Airport\_Community\_Round\_Table\_Support\GIS\309951\_CLT\_Figure37\_DNL\_Grid\_20180101-20181231.mxd



**DNL Grid Analysis**  
**January 1, 2018 through December 31, 2018**  
**CLT Baseline Operations**

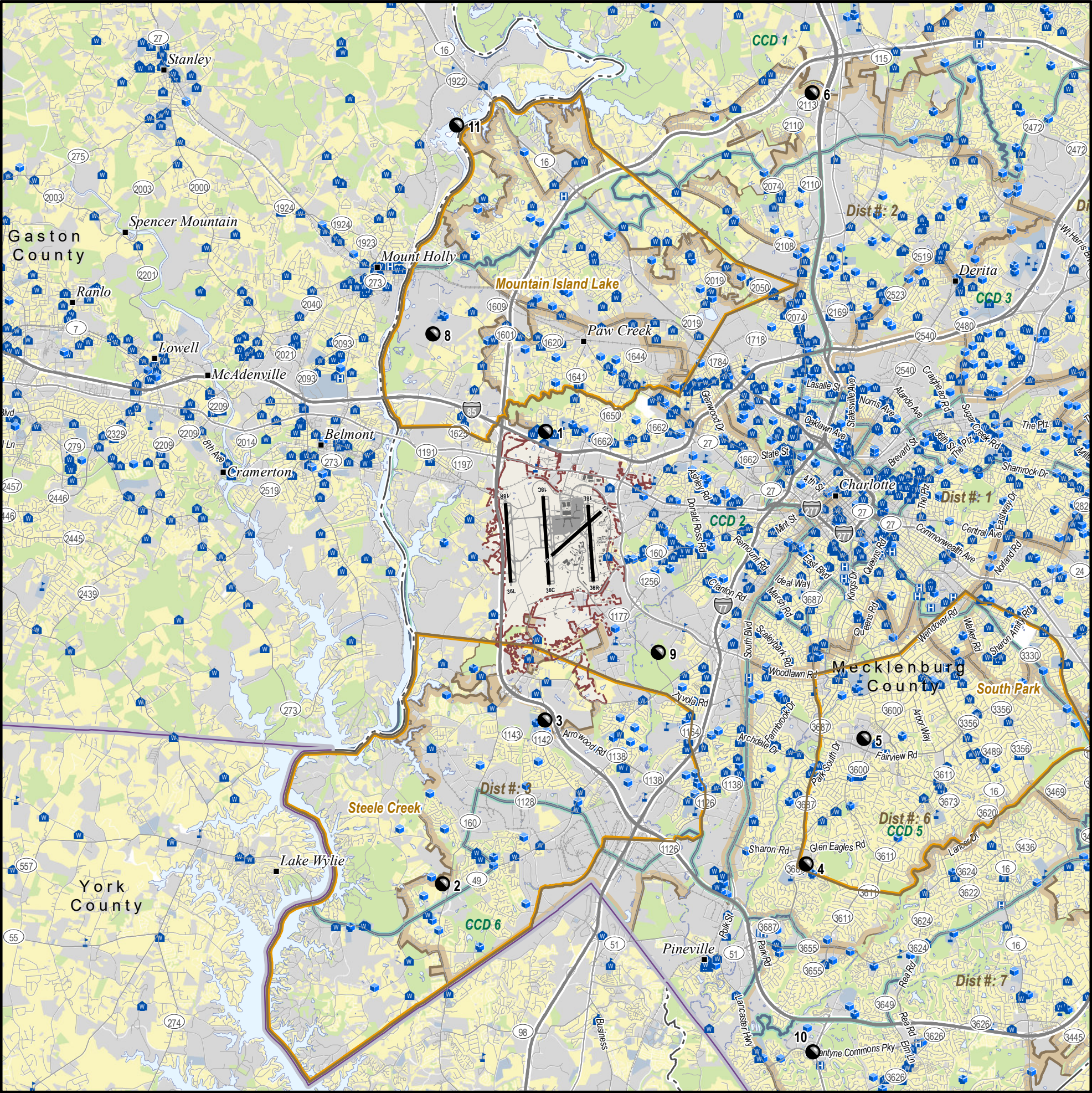
- Runway
- Airport Boundary (Approximate)
- DNL Grid
  - 0.0 - 45.0
  - 45.1 - 50.0
  - 50.1 - 55.0
  - 55.1 - 60.0
  - 60.1 - 65.0
  - 65.1 - 70.0
  - 70.1 - 75.0
  - >= 75.1
- State Boundary
- County Boundary
- Highway
- Minor Roads
- Major Roads
- Railroad
- Charlotte Regions
- City Council District Boundaries
- County Commission Districts
- Water / Stream
- Landmark Locations
  - 1 West Mecklenburg High
  - 2 Southwest Middle School
  - 3 Olympic Community High School
  - 4 Quail Hollow Middle School
  - 5 South Park Mall
  - 6 NorthLake Mall
  - 7 UNCC
  - 8 US Whitewater Center
  - 9 Renaissance Park
  - 10 Ballantyne
  - 11 Mountain Island Lake

Data Source: Mecklenburg County GIS, November 2018, (Parks, Community Points, Lakes, Ponds, Roads); Gaston County GIS, November 2018, (Parks, Community Points); York County GIS, March 2019, (Parks, Community Points); CLT, March 2019, (County Boundary, City Boundary, Charlotte Regions)





Document Path: G:\Projects\309XXX\309951\_CLT\_Airport\_Community\_Round\_Table\_Support\GIS\309951\_CLT\_FigureX\_2018\_Operations\_Baseline\_LU\_Base\_Map.mxd



CLT 2018 Operations Baseline  
Base Map

- Runway
- Airport Boundary (Approximate)
- State Boundary
- County Boundary
- Highway
- Minor Roads
- Major Roads
- Railroad
- Charlotte Regions
- City Council District Boundaries
- County Commission Districts
- Noise Sensitive Land Use
- Compatible Land Use
- Water / Stream
- Pulbic Use
- Open Space
- School / College / University
- Place of Worship
- Hospital
- Day Care
- Landmark Locations
  - 1 West Mecklenburg High
  - 2 Southwest Middle School
  - 3 Olympic Community High School
  - 4 Quail Hollow Middle School
  - 5 South Park Mall
  - 6 NorthLake Mall
  - 7 UNCC
  - 8 US Whitewater Center
  - 9 Renaissance Park
  - 10 Ballantyne
  - 11 Mountain Island Lake

Data Source: Mecklenburg County GIS, November 2018, (Land Use, Parks, Community Points, Lakes, Ponds, Roads); Lancaster County GIS, January 2019, (Land Use); Gaston County GIS, November 2018, (Land Use, Parks, Community Points); York County GIS, March 2019, (Land Use, Parks, Community Points); Carrabus County GIS, April 2019, (Land Use); ESRI, 2017, (North American Streets); CLT, March 2019, (County Boundary, City Boundary, Charlotte Regions)

