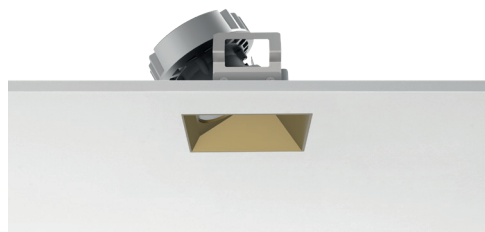


Kap 80 Squared Wall-Washer Airtight

Ceiling Recessed Trimless Downlight



Description

LED trimless downlight for new construction. Recessed mud-in mounting into drywall or plasterboard. Die-cast aluminum body with painted lacquer finish. This LED downlight uses cutting edge technology which creates a higher-powered downlight due to cooler operating electronics yielding 20% higher luminous flux than earlier models. Product is JA8-2019 CA Title 24 listed and CCEA Chicago Plenum.

Lamp

Lamps Type	LED ARRAY
Wattage	9.2W
Output Nominal	935lm, 974lm
Color Temperature	2700K, 3000K
Color rendering	CRI 90

Optical

Beam Angle	26°, 28°, 30°
Lighting Type	Direct
Light Distribution	Symmetric

Physical

Material	Aluminum
Aiming	Wall Washer
Weight	0.6 Lbs
Ingress Protection Rating	IP54
Finishes	Painted lacquer

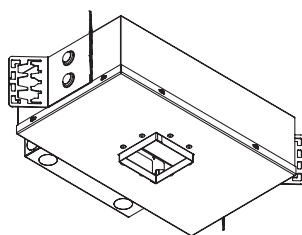
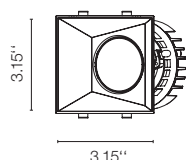
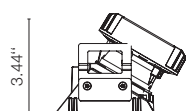
☐ B1 White

☒ 74 Black

☐ GL Matt Gold



Dimensions



14.7" x 11.1" x 4.2"

Certifications



Photometrics

For current IES files please visit architectural.flosusa.com

Warranty

2 years from date of sale.

Installation type

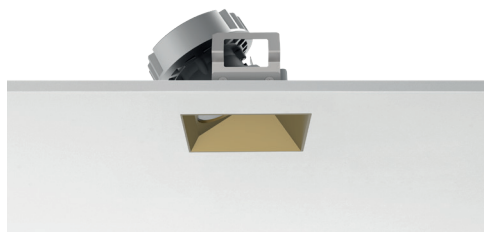
Ceiling

Environment

Indoor

Kap 80 Squared Wall-Washer Airtight

Ceiling Recessed Trimless Downlight



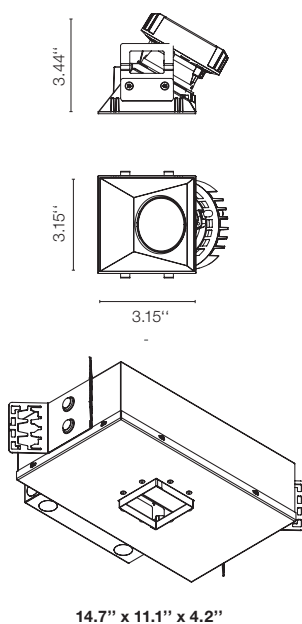
Electrical & Control

Input Voltage	120-277V
Control	Standard 0-10V dimming 1 linear
Driver	Integral on housing
Current	500mA

Performance

Maximum delivered output	739lm
Efficacy	80.33lm/W

Dimensions



Notes

Integral LED. COB is not field replaceable by the final user.

Softening diffuser accessory provided.

IP54 - Suitable for Damp locations.

Airtight Listed housing for new construction only.

JA8-2019 CA Title 24 listed downlight, 0-10V dimmable. Not available with ELV dimming.

CCEA, Chicago Plenum standard 0-10V dimmable. Consult with factory for ELV option.

IC-rated downlight for direct insulation contact.

Certifications



Photometrics

For current IES files please visit
architectural.flosusa.com

Warranty

2 years from date of sale.

FLOS. USA
 36 East 31st Street
 Suite 402
 New York N.Y. 10016
 (800) 841.4011

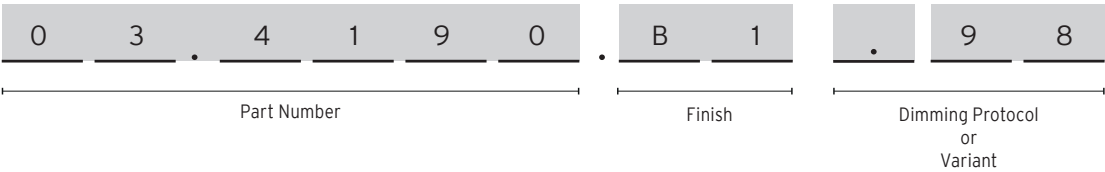
For more information contact your representative or go to architectural.flosusa.com
 ©2025 Specifications and dimensions subject to change without notice. Issued 04.22.2025



Kap 80 Squared Wall-Washer Airtight

Ceiling Recessed Trimless Downlight

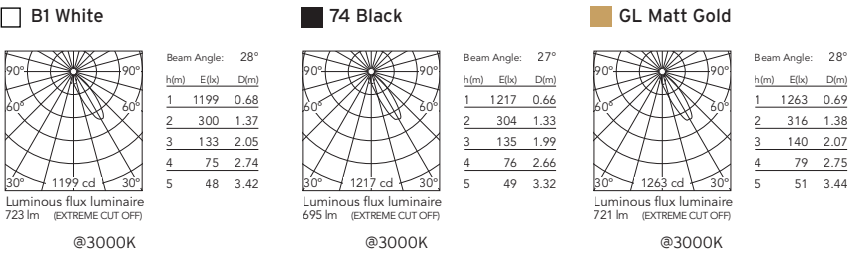
How to specify



How to Specify ex. 03.4188.B1.98

Part Number	CCT	CRI	Initial Lumens	Watts	Beam Angle	Finish	Variant
03.4190	3000	90	974	9,2W	<div>28°</div> <div>26°</div> <div>30°</div>	<div>B1 = White</div> <div>74 = Black</div> <div>GL = Gold</div>	.98 : CCEA, JA8-2019 CA Title 24 listed downlight. Housing is required.
03.4191	2700	90	935				

Photometrics



Kap 80 Squared Wall-Washer Airtight

Ceiling Recessed Trimless Downlight

Required Housing and Hanger Bar

Kap 80 Squared Airtight Housing for New construction, Integral 0-10V dimmable driver. Title 24 - JA8, CCEA Chicago Plenum		1 male, 1 female hanger bar Extendable from 14" to 24" centers. Qty required 2	
08.7061.00.90		203-000320	
