

Light Shadow Fixed, Trimless 2L

NON-IC Ceiling Recessed Fixed Downlight.

Description

Flos introduces Light Shadow, a revolution in low-glare lighting. A patented and unique optical solution in this new family reaches extreme cut off angles without sacrificing efficiency. The optics have been designed exclusively by FLOS and guarantee maximum control and uniformity of the beam. Light Shadow is a downlight that can be perfectly incorporated into any architecture because of its extraordinary compact size that allows the integration even when there is a minimum space. The collection is available in 2/4/8/or 12 spots, trimmed or trimless, and fixed or adjustable. It can be mounted in a continuous row. The Light Shadow 4 spot is also available as a light element for Running Magnet 2.0.

Lamp

Table with 2 columns: Specification (Lamp Type, Wattage, Initial Lumens, Color Temperature, Color rendering) and Value (LED, 7W, 540lm, 570lm, 2700K, 3000K, 3500K\*, CRI 90).

Optical

Table with 2 columns: Specification (Beam Angle, Lighting Type, Light Distribution) and Value (10°, 22°, 33°, 45°, Direct, Symmetric).

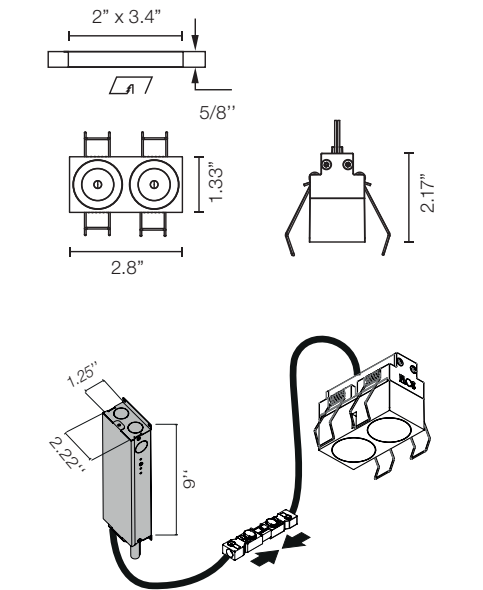
Physical

Table with 2 columns: Specification (Material, Aiming, Weight, Ingress Protection Rating) and Value (Aluminum, Fixed, Fixture: 0.55 Pounds, IP55).

Finishes:

Interior: White, Black, Copper, Steel, Bronze
Exterior: 40 White, 14 Black

Dimensions



Certifications



Photometrics

For current IES files please visit arch.flosusa.com

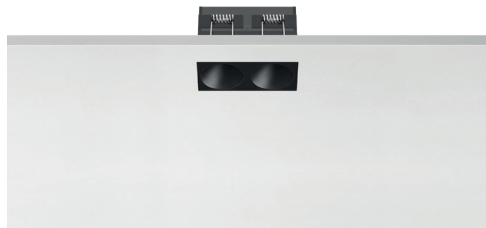
Warranty

2 years from date of sale.



## Light Shadow Fixed, Trimless 2L

NON-IC Ceiling Recessed Fixed Downlight.



### Electrical & Control

**Driver Input Voltage** 120V or 277V (depending on Selected Splice Box)

**Control** 0-10V and ELV

**Driver** Integral - Splice Box

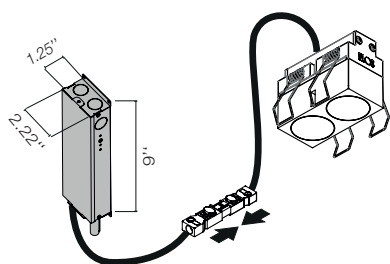
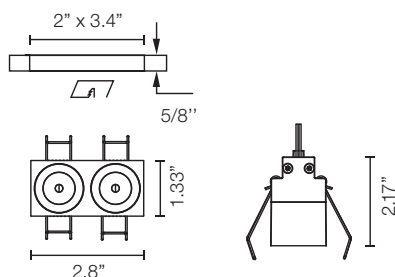
**Current** 900mA

### Performance

**Delivered Lumens** From 433lm To 476lm

**Efficacy** 88.14lm/W

### Dimensions



### Notes

Black reflector provides the greatest comfort level

Integral LED board is not field replaceable.

Pre-Installation frame required.

Splice Box is installed from below.

Non IC rated luminaire

Splice Box required has to be ordered separately always from FLOS. 3 Standard Options:

- 0-10V Dimming 120V
- 0-10V Dimming 277V
- ELV Dimming 120V

3500K and other CCT available but not cataloged. Consult factory for additional color temperatures.

### Certifications



### Photometrics

For current IES files please visit  
[arch.flosusa.com](http://arch.flosusa.com)

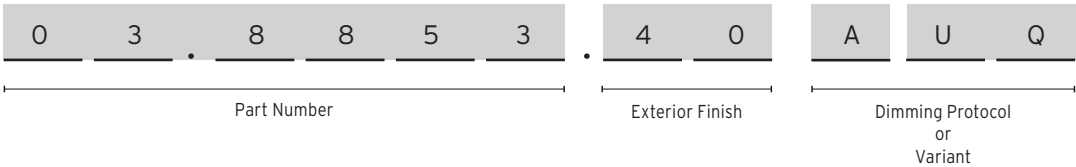
### Warranty

2 years from date of sale.

Light Shadow Fixed, Trimless 2L

NON-IC Ceiling Recessed Fixed Downlight.

How to specify



How to Specify ex. 03.8853.40AUQ

CCT	CRI	Initial Lumens	Watts	Beam Angle	Part Number	Exterior Finish	Interior Finish	Variant
2700	90	540	7	10°	03.8853	<div><div></div> 40 = White</div> <div><div></div> 14 = Black</div>	<div><div></div> Black</div>	AUQ = US product. Splice Box* not included.  *Has to be Always supply by FLOS
					03.8852		<div><div></div> White</div>	
					05.1040		<div><div></div> Copper</div>	
					05.1041		<div><div></div> Steel</div>	
					05.1042		<div><div></div> Bronze</div>	
3000	90	570	7		03.8857	<div><div></div> 40 = White</div> <div><div></div> 14 = Black</div>	<div><div></div> Black</div>	
					03.8856		<div><div></div> White</div>	
					05.1045		<div><div></div> Copper</div>	
					05.1046		<div><div></div> Steel</div>	
					05.1047		<div><div></div> Bronze</div>	
2700	90	540	7	22°	03.9201	<div><div></div> 40 = White</div> <div><div></div> 14 = Black</div>	<div><div></div> Black</div>	
					03.9200		<div><div></div> White</div>	
					05.1050		<div><div></div> Copper</div>	
					05.1051		<div><div></div> Steel</div>	
					05.1052		<div><div></div> Bronze</div>	
3000	90	570	7		03.9211	<div><div></div> 40 = White</div> <div><div></div> 14 = Black</div>	<div><div></div> Black</div>	
					03.9210		<div><div></div> White</div>	
					05.1055		<div><div></div> Copper</div>	
					05.1056		<div><div></div> Steel</div>	
					05.1057		<div><div></div> Bronze</div>	

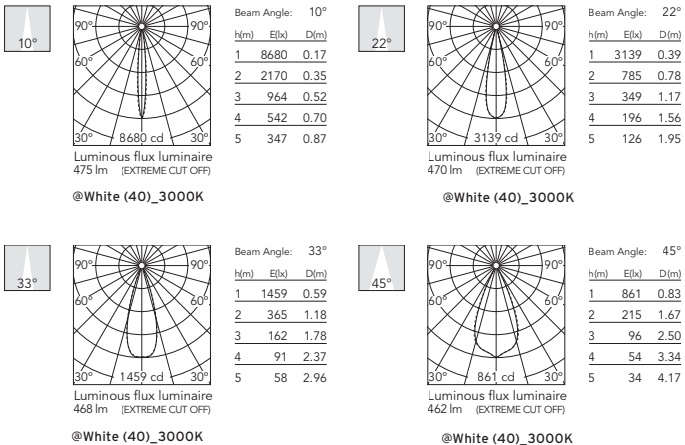
Light Shadow Fixed, Trimless 2L

NON-IC Ceiling Recessed Fixed Downlight.

How to Specify ex. 03.9206.40AUQ

CCT	CRI	Initial Lumens	Watts	Beam Angle	Part Number	Exterior Finish	Interior Finish	Variant
2700	90	540	7	33°	03.9206	<div>40 = White</div> <div>14 = Black</div>	<div>Black</div>	AUG = US product. Splice Box* not included.  *Has to be Always supply by FLOS
					03.9205		<div>White</div>	
					05.1060		<div>Copper</div>	
					05.1061		<div>Steel</div>	
					05.1062		<div>Bronze</div>	
3000	90	570	7	33°	03.9216	<div>40 = White</div> <div>14 = Black</div>	<div>Black</div>	
					03.9215		<div>White</div>	
					05.1065		<div>Copper</div>	
					05.1066		<div>Steel</div>	
					05.1067		<div>Bronze</div>	
2700	90	540	7	46°	03.8351	<div>40 = White</div> <div>14 = Black</div>	<div>Black</div>	
					03.8350		<div>White</div>	
					05.1070		<div>Copper</div>	
					05.1071		<div>Steel</div>	
					05.1072		<div>Bronze</div>	
3000	90	570	7	46°	03.8355	<div>40 = White</div> <div>14 = Black</div>	<div>Black</div>	
					03.8354		<div>White</div>	
					05.1075		<div>Copper</div>	
					05.1076		<div>Steel</div>	
					05.1077		<div>Bronze</div>	

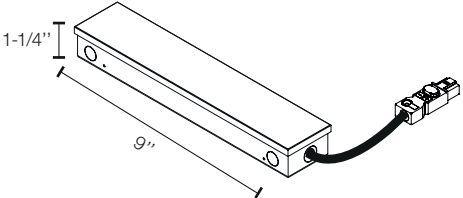
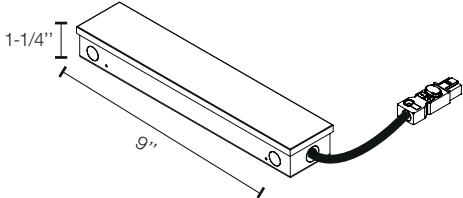
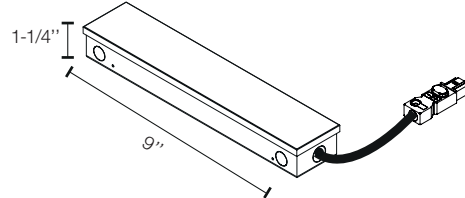
Photometrics



Light Shadow Fixed, Trimless 2L

NON-IC Ceiling Recessed Fixed Downlight.

Required Splice Box

Splice Box 20W, 10% dim, 0-10V, 120V. Size: 9" x 2.22" x 1.25"	Splice Box 20W, 10% dim, 0-10V, 277V. Size: 9" x 2.22" x 1.25"	Splice Box 20W, 20% dim, ELV, 120V. Size: 9" x 2.22" x 1.25"
SP20W900MA-120-C01	SP20W900MA-277-C01	SP20W900MA-ELV-C01
		

Continuous Lines | How to Specify

A. Select modules sizes and pre-installation frames

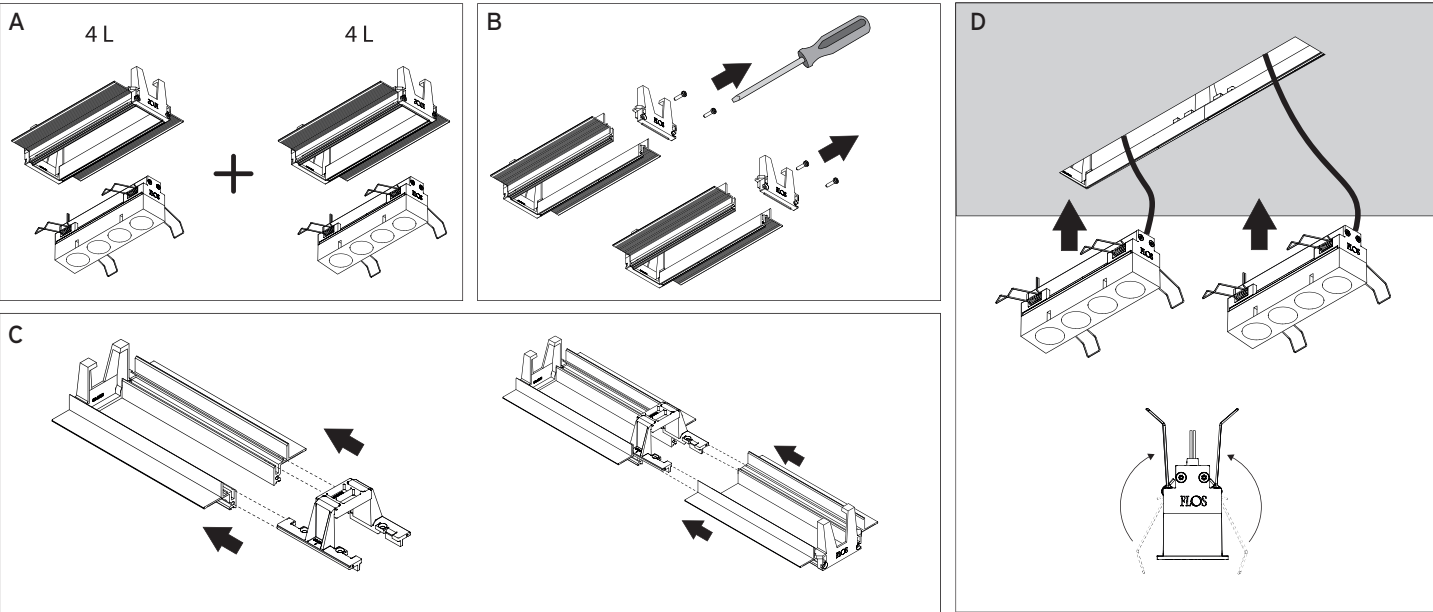
- 1. 2 Lights module
- 2. 4 Lights module
- 3. 8 Lights Module
- 4. 12 Module

C. Use the accessory to joint the frames

Each accessory allows connection between two trimless pre-installation frames.

B. Remove the endcap of the frames

D. Install the continuous frame in the drywall ceiling and place the light modules



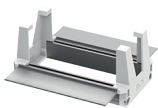
Light Shadow Fixed, Trimless 2L

NON-IC Ceiling Recessed Fixed Downlight.

Required Accessories

Pre-installation trimless frame 2L 5/8" ceiling thickness

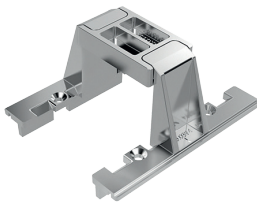
08.0510.00.90



Optional Accessories

Accessory for mounting trimless continuous line. Each accessory allows connection between two trimless pre-installation frames.

08.0052.90



Tray - Optional Accessories

Registration Tray - non electrical, place holder for non IC new construction 2.84" x 1.46".

TRAY-0032

