

## Light Shadow Fixed, Trimless 4L

NON-IC Ceiling Recessed Fixed Downlight.

### Description

Flos introduces Light Shadow, a revolution in low-glare lighting. A patented and unique optical solution in this new family reaches extreme cut off angles without sacrificing efficiency. The optics have been designed exclusively by FLOS and guarantee maximum control and uniformity of the beam. Light Shadow is a downlight that can be perfectly incorporated into any architecture because of its extraordinary compact size that allows the integration even when there is a minimum space. The collection is available in 2/4/8/or 12 spots, trimmed or trimless, and fixed or adjustable. It can be mounted in a continuous row. The Light Shadow 4 spot is also available as a light element for Running Magnet 2.0.

### Lamp

Lamp Type	LED
Wattage	10.8W
Initial Lumens	1080lm, 1140lm
Color Temperature	2700K, 3000K, 3500K* (See Notes)
Color rendering	CRI 90

### Optical

Beam Angle	10°/ 22°/ 33°/ 45°
Lighting Type	Direct
Light Distribution	Symmetric

### Physical

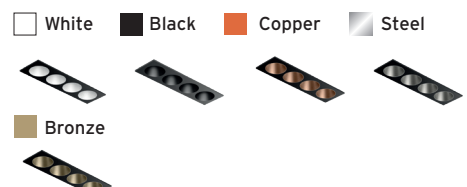
Material	Aluminum
Aiming	Fixed
Weight	Fixture: 0.75 Pounds
Ingress Protection Rating	IP55

### Finishes:

Exterior:



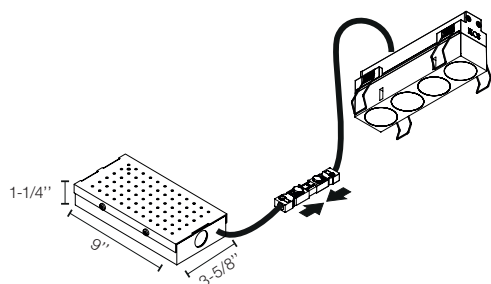
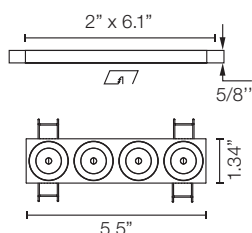
Interior:



Installation type	Ceiling Recessed - Non IC
Environment	Indoor
Minimum Plenum height	6"
Maximum Ceiling thickness	5/8" (1/2" also available)



### Dimensions



### Certifications



### Photometrics

For current IES files please visit  
[arch.flosusa.com](http://arch.flosusa.com)

### Warranty

2 years from date of sale.

## Light Shadow Fixed, Trimless 4L

NON-IC Ceiling Recessed Fixed Downlight.



### Electrical & Control

**Driver Input Voltage** 120V or 277V (depending on Selected Splice Box)

**Control** 0-10V and ELV

**Driver** Integral - Splice Box

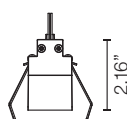
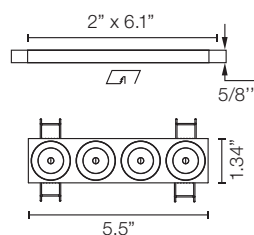
**Current** 900mA

### Performance

**Delivered Lumens** From 719lm To 804lm

**Efficacy** 74.4lm/W

### Dimensions



### Notes

Black reflector provides the greatest comfort level

Integral LED board is not field replaceable.

Pre-Installation frame is required.

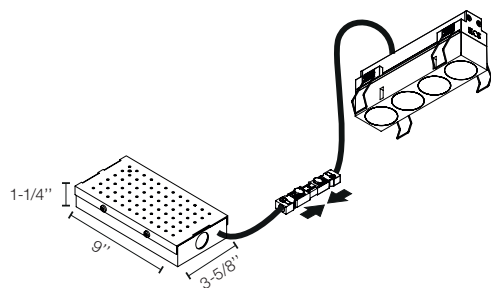
Splice Box is installed from below.

Non IC rated luminaire

Splice Box required has to be ordered separately always from FLOS. 3 Standard Options:

- 0-10V Dimming 120V
- 0-10V Dimming 277V
- ELV Dimming 120V

3500K and other CCT available but not cataloged. Consult factory for additional color temperatures.



### Certifications



### Photometrics

For current IES files please visit [arch.flosusa.com](http://arch.flosusa.com)

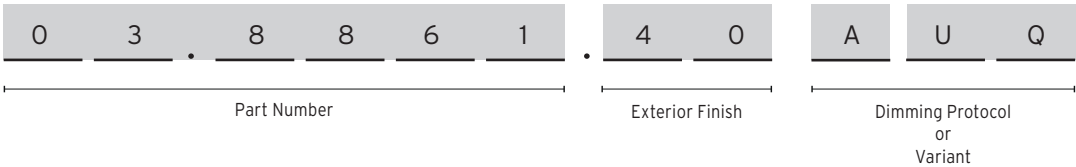
### Warranty

2 years from date of sale.

Light Shadow Fixed, Trimless 4L

NON-IC Ceiling Recessed Fixed Downlight.

How to specify



How to Specify ex. 03.8861.40AUQ

CCT	CRI	Initial Lumens	Watts	Beam Angle	Part Number	Exterior Finish	Interior Finish	Variant
2700	90	1080	10,8	10°	03.8861	<div><div>40 = White</div><div>14 = Black</div></div>	<div><div>Black</div></div>	AUQ = US product. Splice Box* not included.  *Has to be Always supply by FLOS
					03.8860		<div><div>White</div></div>	
					05.1140		<div><div>Copper</div></div>	
					05.1141		<div><div>Steel</div></div>	
					05.1142		<div><div>Bronze</div></div>	
3000	90	1140	10,8	10°	03.8865	<div><div>40 = White</div><div>14 = Black</div></div>	<div><div>Black</div></div>	
					03.8864		<div><div>White</div></div>	
					05.1145		<div><div>Copper</div></div>	
					05.1146		<div><div>Steel</div></div>	
					05.1147		<div><div>Bronze</div></div>	
2700	90	1080	10,8	22°	03.9221	<div><div>40 = White</div><div>14 = Black</div></div>	<div><div>Black</div></div>	
					03.9220		<div><div>White</div></div>	
					05.1150		<div><div>Copper</div></div>	
					05.1151		<div><div>Steel</div></div>	
					05.1152		<div><div>Bronze</div></div>	
3000	90	1140	10,8	22°	03.9231	<div><div>40 = White</div><div>14 = Black</div></div>	<div><div>Black</div></div>	
					03.9230		<div><div>White</div></div>	
					05.1155		<div><div>Copper</div></div>	
					05.1156		<div><div>Steel</div></div>	
					05.1157		<div><div>Bronze</div></div>	

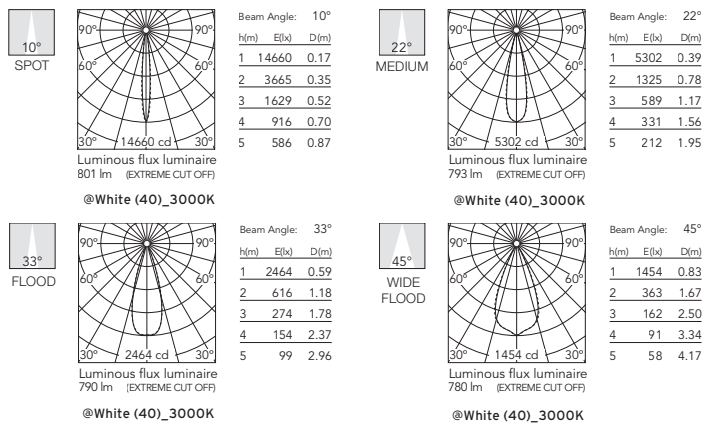
Light Shadow Fixed, Trimless 4L

NON-IC Ceiling Recessed Fixed Downlight.

How to Specify ex. 03.9226.40AUQ

CCT	CRI	Initial Lumens	Watts	Beam Angle	Part Number	Exterior Finish	Interior Finish	Variant
2700	90	1080	10,8	33°	03.9226	40 = White 14 = Black	Black	AUQ = US product. Splice Box* not included.  *Has to be Always supply by FLOS
					03.9225		White	
					05.1160		Copper	
					05.1161		Steel	
					05.1162		Bronze	
3000	90	1140	10,8	33°	03.9236	40 = White 14 = Black	Black	
					03.9235		White	
					05.1165		Copper	
					05.1166		Steel	
					05.1167		Bronze	
2700	90	1080	10,8	45°	03.8359	40 = White 14 = Black	Black	
					03.8358		White	
					05.1170		Copper	
					05.1171		Steel	
					05.1172		Bronze	
3000	90	1140	10,8	45°	03.8363	40 = White 14 = Black	Black	
					03.8362		White	
					05.1175		Copper	
					05.1176		Steel	
					05.1177		Bronze	

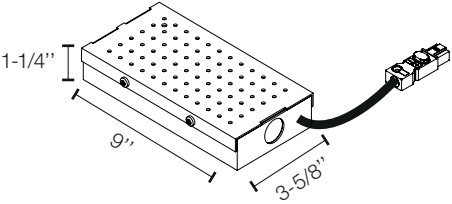
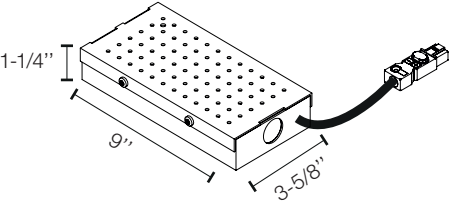
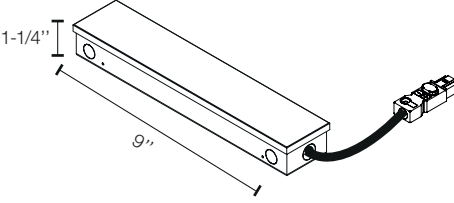
Photometrics



Light Shadow Fixed, Trimless 4L

NON-IC Ceiling Recessed Fixed Downlight.

Required Splice Box

Splice Box 25W, 1% dim, 0-10V, 120V. Size: 9" x 3.59" x 1.25"	Splice Box 25W, 1% dim, 0-10V, 277V. Size: 9" x 3.59" x 1.25"	Splice Box 20W, 20% dim, ELV, 120V. Size: 9" x 2.22" x 1.25"
SP25W900MA-120-A01	SP25W900MA-277-A01	SP20W900MA-ELV-C01
		

Continuous Lines | How to Specify

A. Select modules sizes and pre-installation frames

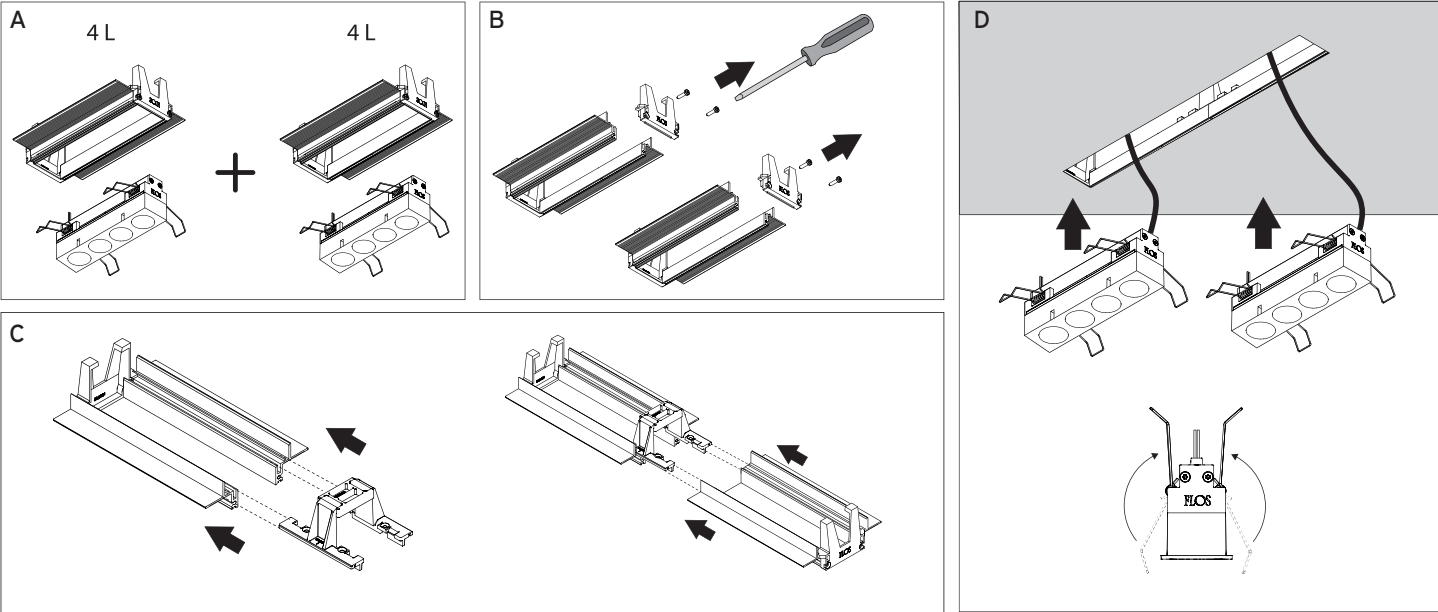
- 1. 2 Lights module
- 2. 4 Lights module
- 3. 8 Lights Module
- 4. 12 Module

C. Use the accessory to joint the frames

Each accessory allows connection between two trimless pre-installation frames.

D. Install the continuous frame in the drywall ceiling and place the light modules

B. Remove the endcap of the frames




Light Shadow Fixed, Trimless 4L

NON-IC Ceiling Recessed Fixed Downlight.

Required Accessories

Image	QTY	Item Number	Description
		08.0511.00.90	Pre-installation trimless frame 4L 5/8" ceiling thickness

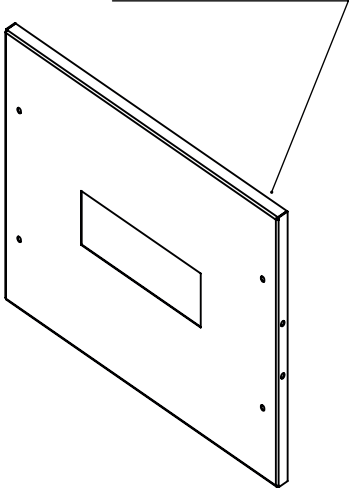
Optional Accessories

		08.0052.90	Accessory for mounting trimless continuous line. Each accessory allows connection between two trimless pre-installation frames.
---	--	------------	--

Tray - Optional Accessories

Registration tray -non electrical, place holder for non IC new construction, 6.14" x 2"

TRAY-0036



0.06" Thick Aluminum

