

Light Shadow Fixed, Trimless 12L

NON-IC Ceiling Recessed Fixed Downlight.

Description

Flos introduces Light Shadow, a revolution in low-glare lighting. A patented and unique optical solution in this new family reaches extreme cut off angles without sacrificing efficiency. The optics have been designed exclusively by FLOS and guarantee maximum control and uniformity of the beam. Light Shadow is a downlight that can be perfectly incorporated into any architecture because of its extraordinary compact size that allows the integration even when there is a minimum space. The collection is available in 2/4/8/ or 12 spots, trimmed or trimless, and fixed or adjustable. It can be mounted in continuous row. The Light Shadow 4 spot is also available as a light element for Running Magnet 2.0.

Lamp

Lamp Type	LED
Wattage	32.4W
Initial Lumens	3240lm, 3420lm
Color Temperature	2700K, 3000K, 3500K* (See Notes)
Color rendering	CRI 90

Optical

Beam Angle	10°/ 22°/ 33°/ 45°
Lighting Type	Direct
Light Distribution	Symmetric

Physical

Material	Aluminum
Aiming	Fixed
Weight	1.3 Pounds
Ingress Protection Rating	IP55

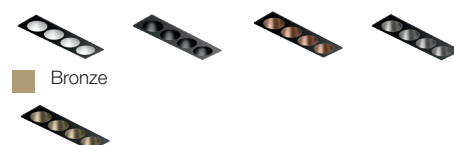
Finishes:

Exterior:



Interior:

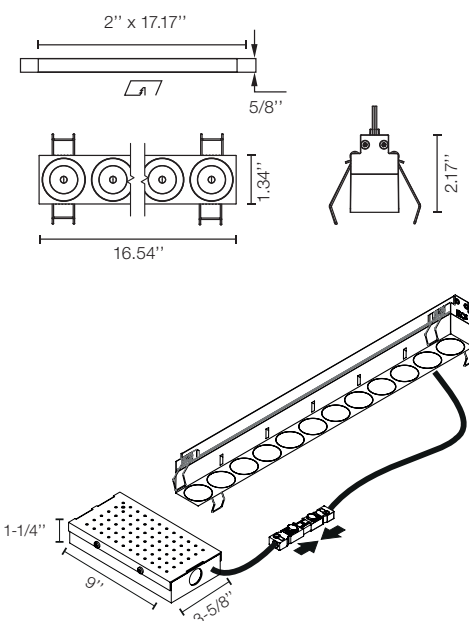
☐ White ☐ Black ☐ Copper ☐ Steel



Installation type	Ceiling Recessed
Environment	Indoor
Minimum Plenum height	4"
Maximum Ceiling thickness	5/8" (1/2" also available)



Dimensions



Certifications



Photometrics

For current IES files please visit
arch.flosusa.com

Warranty

2 years from date of sale.

FLOS, USA
36 East 31st Street
Suite 402
New York N.Y. 10016
(800) 841.4011

For more information contact your representative or go to architectural.flosusa.com
©2025 Specifications and dimensions subject to change without notice. Issued 10.02.2025



Light Shadow Fixed, Trimless 12L

NON-IC Ceiling Recessed Fixed Downlight.



Electrical & Control

Driver Input Voltage 120V or 277V (depending on Selected Splice Box)

Control 0-10V

Driver Integral - Splice Box

Current 900mA

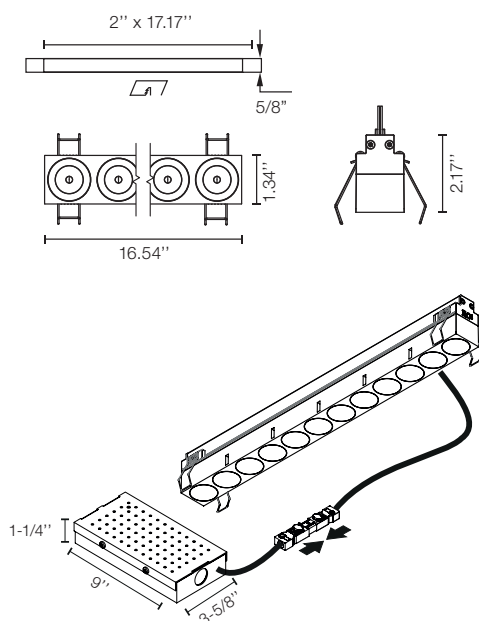
Performance

From 2597m To 2888lm

Delivered Lumens 89.1 lm/W

Efficacy

Dimensions



Notes

Black reflector provides the greatest comfort level

Integral LED board is not field replaceable.

Pre-Installation frame required.

Splice Box is installed from below.

Non IC rated luminaire

Splice Box required has to be ordered separately always from FLOS. 2 Standard Options:

- 0-10V Dimming 120V
- 0-10V Dimming 277V

3500K and other CCT available but not cataloged. Consult factory for additional color temperatures.

Certifications



Photometrics

For current IES files please visit
arch.flosusa.com

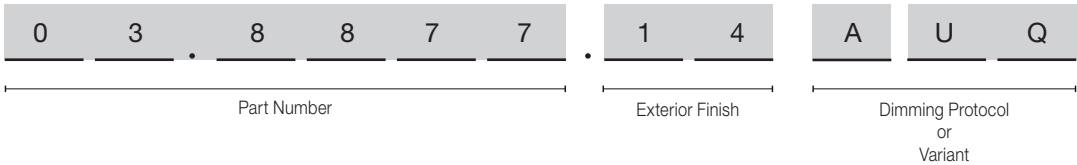
Warranty

2 years from date of sale.

Light Shadow Fixed, Trimless 12L

NON-IC Ceiling Recessed Fixed Downlight.

How to specify



How to Specify ex. 03.8877.14AUQ

CCT	CRI	Initial Lumens	Watts	Beam Angle	Part Number	Exterior Finish	Interior Finish	Variant
2700	90	3240	32,4	10°	03.8877	<div><div></div> 40 = White</div> <div><div></div> 14 = Black</div>	<div><div></div> Black</div>	AUQ = US product. Splice Box* not included. *Has to be Always supply by FLOS
					03.8876		<div><div></div> White</div>	
					05.1340		<div><div></div> Copper</div>	
					05.1341		<div><div></div> Steel</div>	
					05.1342		<div><div></div> Bronze</div>	
3000	90	3420	32,4		03.8881	<div><div></div> 40 = White</div> <div><div></div> 14 = Black</div>	<div><div></div> Black</div>	
					03.8880		<div><div></div> White</div>	
					05.1345		<div><div></div> Copper</div>	
					05.1346		<div><div></div> Steel</div>	
					05.1347		<div><div></div> Bronze</div>	
2700	90	3240	32,4	22°	03.9261	<div><div></div> 40 = White</div> <div><div></div> 14 = Black</div>	<div><div></div> Black</div>	
					03.9260		<div><div></div> White</div>	
					05.1350		<div><div></div> Copper</div>	
					05.1351		<div><div></div> Steel</div>	
					05.1352		<div><div></div> Bronze</div>	
3000	90	3420	32,4		03.9271	<div><div></div> 40 = White</div> <div><div></div> 14 = Black</div>	<div><div></div> Black</div>	
					03.9270		<div><div></div> White</div>	
					05.1355		<div><div></div> Copper</div>	
					05.1356		<div><div></div> Steel</div>	
					05.1357		<div><div></div> Bronze</div>	

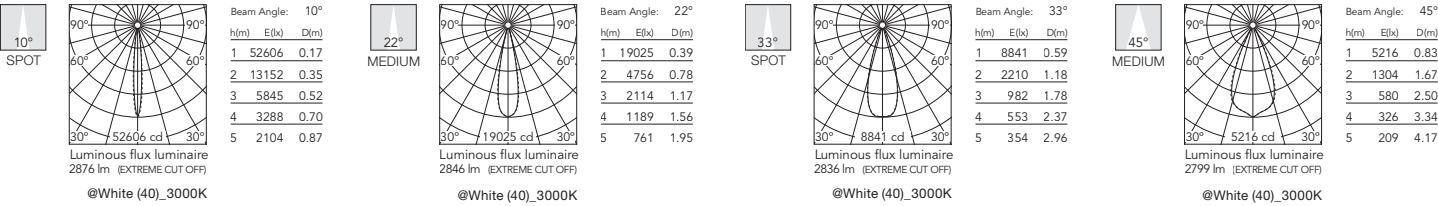
Light Shadow Fixed, Trimless 12L

NON-IC Ceiling Recessed Fixed Downlight.

How to Specify ex. 03.9266.14AUQ

CCT	CRI	Initial Lumens	Watts	Beam Angle	Part Number	Exterior Finish	Interior Finish	Variant
2700	90	3240	32,4	33°	03.9266	40 = White 14 = Black	Black	AUQ = US product. Splice Box* not included. *Has to be Always supply by FLOS
					03.9265		White	
					05.1360		Copper	
					05.1361		Steel	
					05.1362		Bronze	
3000	90	3420	32,4	33°	03.9276	40 = White 14 = Black	Black	
					03.9275		White	
					05.1365		Copper	
					05.1366		Steel	
					05.1367		Bronze	
2700	90	3240	32,4	45°	03.8375	40 = White 14 = Black	Black	
					03.8374		White	
					05.1370		Copper	
					05.1371		Steel	
					05.1372		Bronze	
3000	90	3420	32,4	45°	03.8379	40 = White 14 = Black	Black	
					03.8378		White	
					05.1375		Copper	
					05.1376		Steel	
					05.1377		Bronze	

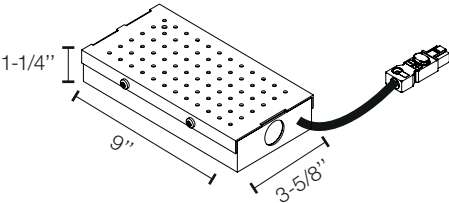
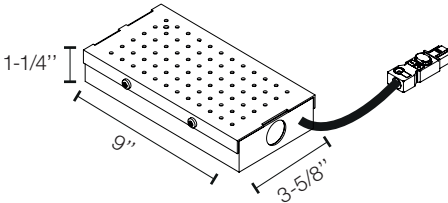
Photometrics



Light Shadow Fixed, Trimless 12L

NON-IC Ceiling Recessed Fixed Downlight.

Required Splice Box

Splice Box 40W, 1% dim, 0-10V, 120V. Size: 9" x 3.59" x 1.25"	Splice Box 40W, 1% dim, 0-10V, 277V. Size: 9" x 3.59" x 1.25"	
SP40W900MA-120-A01	SP40W900MA-277-A01	
		

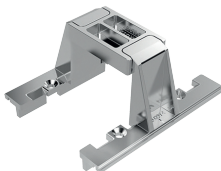
Required Accessories

Pre-installation trimless frame 8L 5/8" ceiling thickness
08.0513.00.90



Optional Accessories

Accessory for mounting trimless continuous line. Each accessory allows connection between two trimless pre-installation frames.
08.0052.90



Light Shadow Fixed, Trimless 12L

NON-IC Ceiling Recessed Fixed Downlight.

Continuous Lines | How to Specify

A. Select modules sizes and pre-installation frames

1. 2 Lights module
2. 4 Lights module
3. 8 Lights Module
4. 12 Module

B. Remove the endcap of the frames

C. Use the accessory to joint the frames

Each accessory allows connection between two trimless pre-installation frames.

D. Install the continuous frame in the drywall ceiling and place the light modules

