

Light Shadow Adjustable, Trimless 8L

NON-IC Ceiling Recessed Adjustable Downlight.

Description

Flos introduces Light Shadow, a revolution in low-glare lighting. A patented and unique optical solution in this new family reaches extreme cut off angles without sacrificing efficiency. The optics have been designed exclusively by FLOS and guarantee maximum control and uniformity of the beam. Light Shadow is a downlight that can be perfectly incorporated into any architecture because of its extraordinary compact size that allows the integration even when there is a minimum space. The collection is available in 2/4/8/or 12 spots, trimmed or trimless, and fixed or adjustable. It can be mounted in continuous row. The Light Shadow 4 spot is also available as a light element for Running Magnet 2.0.


Lamp

Lamp Type	LED
Wattage	21.6W / 18,5W
Initial Lumens	2160lm, 2280lm / 1800lm, 1900lm
Color Temperature	2700K, 3000K, 3500K* (See Notes)
Color rendering	CRI 90

Optical

Beam Angle	10°/ 22°/ 33°/ 45°
Lighting Type	Direct
Light Distribution	Symmetric

Physical

Material	Aluminum
Aiming	Adjustable 30° 
Weight	1.1 Pounds
Ingress Protection Rating	IP20

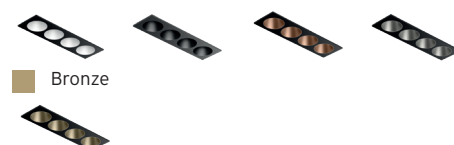
Finishes:

Exterior:



Interior:

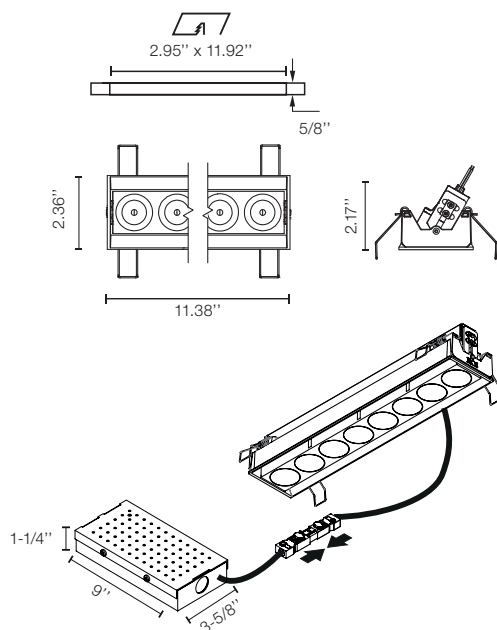
☐ White ☐ Black ☐ Copper ☐ Steel



Installation type	Ceiling Recessed
Environment	Indoor
Minimum Plenum height	4"
Maximum Ceiling thickness	5/8" (1/2" also available)



Dimensions



Certifications



Photometrics

For current IES files please visit arch.flosusa.com

Warranty

2 years from date of sale.



Light Shadow Adjustable, Trimless 8L

NON-IC Ceiling Recessed Adjustable Downlight.

Electrical & Control

Driver Input Voltage 120V or 277V (depending on Selected Splice Box)

Control 0-10V and ELV

Driver Integral - Splice Box

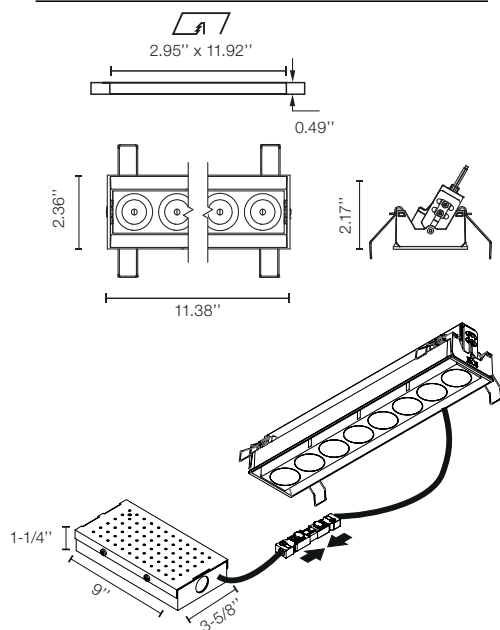
Current 900mA / 750mA

Performance From 1531m To 1741lm

Delivered Lumens 80.6 lm/W

Efficacy

Dimensions



Notes

Black reflector provides the greatest comfort level

Integral LED board is not field replaceable.

Pre-Installation frame required.

Splice Box is installed from below.

Non IC rated luminaire

Splice Box required has to be ordered separately always from FLOS. 3 Standard Options:

- 0-10V Dimming 120V
- 0-10V Dimming 277V
- ELV Dimming 120V

3500K and other CCT available but not cataloged. Consult factory for additional color temperatures.

Certifications



Photometrics

For current IES files please visit arch.flosusa.com

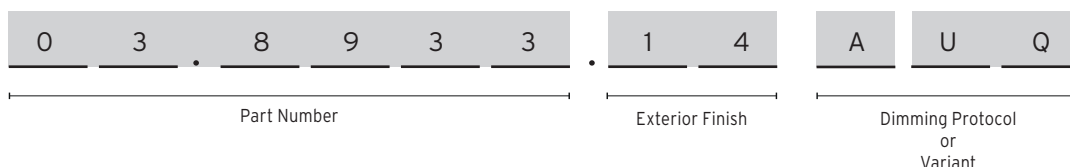
Warranty

2 years from date of sale.

Light Shadow Adjustable, Trimless 8L

NON-IC Ceiling Recessed Adjustable Downlight.

How to specify



How to Specify

ex. 03.8933.14AUQ

CCT	CRI	Initial Lumens (900mA/750mA)	Watts (900mA/750mA)	Beam Angle	Part Number	Exterior Finish	Interior Finish	Variant
2700	90	2160 / 1800	21,6 / 18,5	10°	03.8933	<input type="checkbox"/> 40 = White <input checked="" type="checkbox"/> 14 = Black	<input checked="" type="checkbox"/> Black	AUQ = US product. Splice Box* not included. *Has to be Always supply by FLOS
					03.8932		<input type="checkbox"/> White	
					05.1640		<input checked="" type="checkbox"/> Copper	
					05.1641		<input checked="" type="checkbox"/> Steel	
					05.1642		<input checked="" type="checkbox"/> Bronze	
3000	90	2280 / 1900	21,6 / 18,5	10°	03.8937	<input type="checkbox"/> 40 = White <input checked="" type="checkbox"/> 14 = Black	<input checked="" type="checkbox"/> Black	
					03.8936		<input type="checkbox"/> White	
					05.1645		<input checked="" type="checkbox"/> Copper	
					05.1646		<input checked="" type="checkbox"/> Steel	
					05.1647		<input checked="" type="checkbox"/> Bronze	
2700	90	2160 / 1800	21,6 / 18,5	22°	03.9441	<input type="checkbox"/> 40 = White <input checked="" type="checkbox"/> 14 = Black	<input checked="" type="checkbox"/> Black	
					03.9440		<input type="checkbox"/> White	
					05.1650		<input checked="" type="checkbox"/> Copper	
					05.1651		<input checked="" type="checkbox"/> Steel	
					05.1652		<input checked="" type="checkbox"/> Bronze	
3000	90	2280 / 1900	21,6 / 18,5	22°	03.9451	<input type="checkbox"/> 40 = White <input checked="" type="checkbox"/> 14 = Black	<input checked="" type="checkbox"/> Black	
					03.9450		<input type="checkbox"/> White	
					05.1655		<input checked="" type="checkbox"/> Copper	
					05.1656		<input checked="" type="checkbox"/> Steel	
					05.1657		<input checked="" type="checkbox"/> Bronze	

Light Shadow Adjustable, Trimless 8L

NON-IC Ceiling Recessed Adjustable Downlight.

How to Specify ex. 03.9446.14AUQ

CCT	CRI	Initial Lumens (900mA/750mA)	Watts (900mA/750mA)	Beam Angle	Part Number	Exterior Finish	Interior Finish	Variant
2700	90	2160 / 1800	21,6 / 18,5	33°	03.9446	<div><div></div> 40 = White</div> <div><div></div> 14 = Black</div>	<div><div></div> Black</div>	AUQ = US product. Splice Box* not included. *Has to be Always supply by FLOS
					03.9445		<div><div></div> White</div>	
					05.1660		<div><div></div> Copper</div>	
					05.1661		<div><div></div> Steel</div>	
					05.1662		<div><div></div> Bronze</div>	
3000	90	2280 / 1900	21,6 / 18,5	33°	03.9456	<div><div></div> 40 = White</div> <div><div></div> 14 = Black</div>	<div><div></div> Black</div>	
					03.9455		<div><div></div> White</div>	
					05.1665		<div><div></div> Copper</div>	
					05.1666		<div><div></div> Steel</div>	
					05.1667		<div><div></div> Bronze</div>	
2700	90	2160 / 1800	21,6 / 18,5	45°	03.7367	<div><div></div> 40 = White</div> <div><div></div> 14 = Black</div>	<div><div></div> Black</div>	
					03.7366		<div><div></div> White</div>	
					05.1670		<div><div></div> Copper</div>	
					05.1671		<div><div></div> Steel</div>	
					05.1672		<div><div></div> Bronze</div>	
3000	90	2280 / 1900	21,6 / 18,5	45°	03.7371	<div><div></div> 40 = White</div> <div><div></div> 14 = Black</div>	<div><div></div> Black</div>	
					03.7370		<div><div></div> White</div>	
					05.1675		<div><div></div> Copper</div>	
					05.1676		<div><div></div> Steel</div>	
					05.1677		<div><div></div> Bronze</div>	

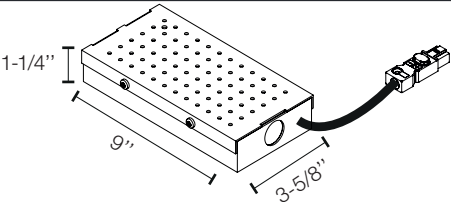
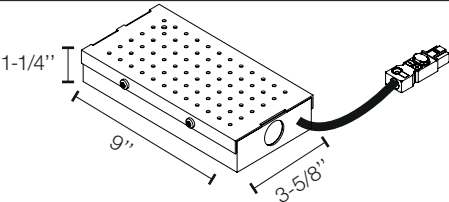
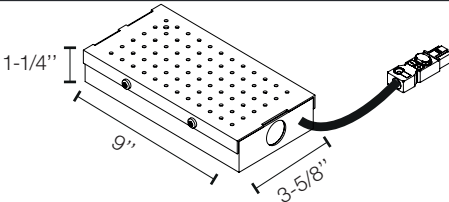
Photometrics

<p>900mA</p> <p>10° SPOT</p> <p>Beam Angle: 10° h(m) E(lx) D(m) 1 34720 0.17 2 8680 0.35 3 3858 0.52 4 2170 0.70 5 1389 0.87 Luminous flux luminaire 1898 lm (EXTREME CUT OFF) @White (40)_3000K</p>	<p>900mA</p> <p>22° MEDIUM</p> <p>Beam Angle: 22° h(m) E(lx) D(m) 1 12556 0.39 2 3139 0.78 3 1395 1.17 4 785 1.56 5 502 1.95 Luminous flux luminaire 1878 lm (EXTREME CUT OFF) @White (40)_3000K</p>	<p>900mA</p> <p>33° SPOT</p> <p>Beam Angle: 33° h(m) E(lx) D(m) 1 5835 0.59 2 1459 1.18 3 648 1.78 4 365 2.37 5 233 2.96 Luminous flux luminaire 1872 lm (EXTREME CUT OFF) @White (40)_3000K</p>	<p>900mA</p> <p>45° MEDIUM</p> <p>Beam Angle: 45° h(m) E(lx) D(m) 1 3443 0.83 2 861 1.67 3 383 2.50 4 215 3.34 5 138 4.17 Luminous flux luminaire 1847 lm (EXTREME CUT OFF) @White (40)_3000K</p>
<p>750mA</p> <p>10° FLOOD</p> <p>Beam Angle: 10° h(m) E(lx) D(m) 1 25088 0.17 2 6272 0.35 3 2788 0.52 4 1568 0.70 5 1004 0.87 Luminous flux luminaire 1371 lm (EXTREME CUT OFF) @White (40)_3000K</p>	<p>750mA</p> <p>22° WIDE FLOOD</p> <p>Beam Angle: 22° h(m) E(lx) D(m) 1 9073 0.39 2 2268 0.78 3 1008 1.17 4 567 1.56 5 363 1.95 Luminous flux luminaire 1357 lm (EXTREME CUT OFF) @White (40)_3000K</p>	<p>750mA</p> <p>33° FLOOD</p> <p>Beam Angle: 33° h(m) E(lx) D(m) 1 4216 0.59 2 1054 1.18 3 468 1.78 4 264 2.37 5 169 2.96 Luminous flux luminaire 1353 lm (EXTREME CUT OFF) @White (40)_3000K</p>	<p>750mA</p> <p>45° WIDE FLOOD</p> <p>Beam Angle: 45° h(m) E(lx) D(m) 1 2488 0.83 2 622 1.67 3 276 2.50 4 155 3.34 5 100 4.17 Luminous flux luminaire 1335 lm (EXTREME CUT OFF) @White (40)_3000K</p>

Light Shadow Adjustable, Trimless 8L

NON-IC Ceiling Recessed Adjustable Downlight.

Required Splice Box

Splice Box 25W, 1% dim, 0-10V, 120V. Size: 9" x 3.59" x 1.25"	Splice Box 25W, 1% dim, 0-10V, 277V. Size: 9" x 3.59" x 1.25"	Splice Box 30W, 20% dim, ELV, 120V. Size: 9" x 3.59" x 1.25"
SP25W900MA-120-A01	SP25W900MA-277-A01	SP30W900MA-ELV-U01
		

Light Shadow Adjustable, Trimless 8L

NON-IC Ceiling Recessed Adjustable Downlight.

Required Accessories

Pre-installation trimless frame 8L
5/8" ceiling thickness

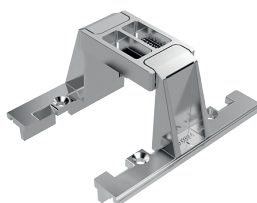
08.0517.00.90



Optional Accessories

Accessory for mounting trimless continuous line. Each accessory allows connection between two trimless pre-installation frames.

08.0059.90



Continuous Lines | How to Specify

A. Select modules sizes and pre-installation frames

1. 2 Lights module
2. 4 Lights module
3. 8 Lights Module
4. 12 Module

B. Remove the endcap of the frames

C. Use the accessory to joint the frames

Each accessory allows connection between two trimless pre-installation frames.

D. Install the continuous frame in the drywall ceiling and place the light modules

