

Light Shadow Fixed, Trimless 12L

NON-IC Ceiling Recessed Fixed Downlight.

Description

Flos introduces Light Shadow, a revolution in low-glare lighting. A patented and unique optical solution in this new family reaches extreme cut off angles without sacrificing efficiency. The optics have been designed exclusively by FLOS and guarantee maximum control and uniformity of the beam. Light Shadow is a downlight that can be perfectly incorporated into any architecture because of its extraordinary compact size that allows the integration even when there is a minimum space. The collection is available in 2/4/8/or 12 spots, trimmed or trimless, and fixed or adjustable. It can be mounted in continuous row. The Light Shadow 4 spot is also available as a light element for Running Magnet 2.0.

Lamp

Table with 2 columns: Specification (Lamp Type, Wattage, Initial Lumens, Color Temperature, Color rendering) and Value (LED, 32.4W, 3240lm, 3420lm, CRI 90).

Optical

Table with 2 columns: Specification (Beam Angle, Lighting Type, Light Distribution) and Value (10°, 22°, 33°, 45°, Direct, Symmetric).

Physical

Table with 2 columns: Specification (Material, Aiming, Weight, Ingress Protection Rating) and Value (Aluminum, Fixed, 1.3 Pounds, IP55).

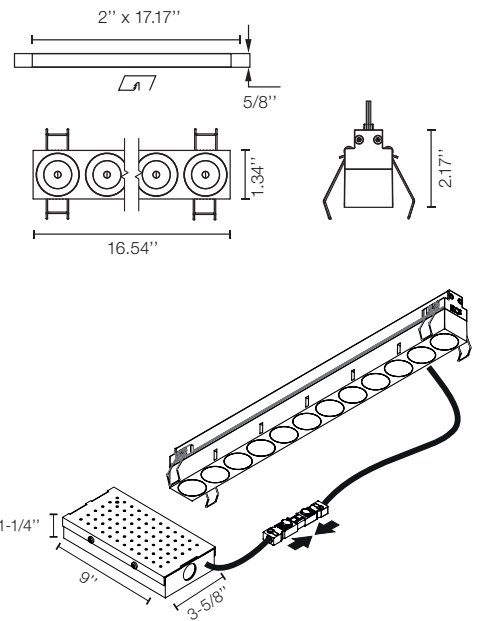
Finishes:

Interior: White, Black, Copper, Steel
Exterior: 40 White, 14 Black, Bronze

Table with 2 columns: Specification (Installation type, Environment, Minimum Plenum height, Maximum Ceiling thickness) and Value (Ceiling Recessed, Indoor, 4", 5/8" (1/2" also available)).



Dimensions



Certifications



Photometrics

For current IES files please visit arch.flosusa.com

Warranty

2 years from date of sale.

FLOS, USA
36 East 31st Street
Suite 402
New York N.Y. 10016
(800) 841.4011

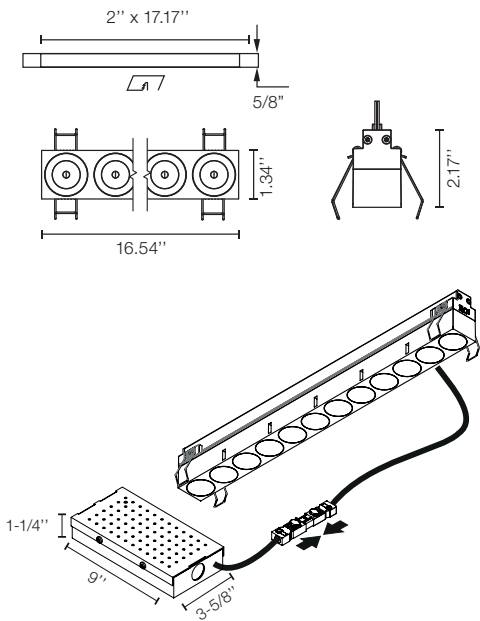


Light Shadow Fixed, Trimless 12L

NON-IC Ceiling Recessed Fixed Downlight.



Dimensions



Electrical & Control

Driver Input Voltage	120V or 277V (depending on Selected Splice Box)
Control	0-10V
Driver	Integral - Splice Box
Current	900mA

Performance	From 2597m To 2888lm
Delivered Lumens	89.1 lm/W
Efficacy	

Notes

- Black reflector provides the greatest comfort level
- Integral LED board is not field replaceable.
- Pre-Installation frame required.
- Splice Box is installed from below.
- Non IC rated luminaire
- Splice Box required has to be ordered separately always from FLOS. 2 Standard Options:
- 0-10V Dimming 120V
 - 0-10V Dimming 277V
- 3500K and other CCT available but not cataloged. Consult factory for additional color temperatures.

Certifications



Photometrics

For current IES files please visit
arch.flosusa.com

Warranty

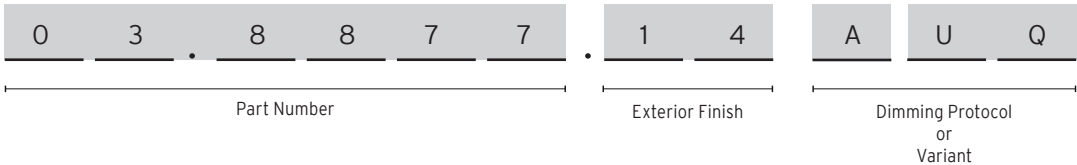
2 years from date of sale.



Light Shadow Fixed, Trimless 12L

NON-IC Ceiling Recessed Fixed Downlight.

How to specify



How to Specify ex. 03.8877.14AUQ

CCT	CRI	Initial Lumens	Watts	Beam Angle	Part Number	Exterior Finish	Interior Finish	Variant
2700	90	3240	32,4	10°	03.8877	<div> <div>40 = White</div> <div>14 = Black</div> </div>	Black	AUQ = US product. Splice Box* not included. *Has to be Always supply by FLOS
					03.8876		White	
					05.1340		Copper	
					05.1341		Steel	
					05.1342		Bronze	
3000	90	3420	32,4	10°	03.8881	<div> <div>40 = White</div> <div>14 = Black</div> </div>	Black	
					03.8880		White	
					05.1345		Copper	
					05.1346		Steel	
					05.1347		Bronze	
2700	90	3240	32,4	22°	03.9261	<div> <div>40 = White</div> <div>14 = Black</div> </div>	Black	
					03.9260		White	
					05.1350		Copper	
					05.1351		Steel	
					05.1352		Bronze	
3000	90	3420	32,4	22°	03.9271	<div> <div>40 = White</div> <div>14 = Black</div> </div>	Black	
					03.9270		White	
					05.1355		Copper	
					05.1356		Steel	
					05.1357		Bronze	

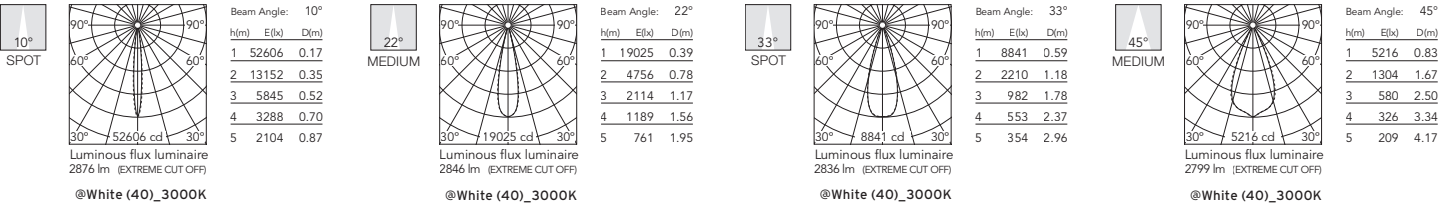
Light Shadow Fixed, Trimless 12L

NON-IC Ceiling Recessed Fixed Downlight.

How to Specify ex. 03.9266.14AUQ

CCT	CRI	Initial Lumens	Watts	Beam Angle	Part Number	Exterior Finish	Interior Finish	Variant
2700	90	3240	32,4	33°	03.9266	40 = White 14 = Black	Black	AUQ = US product. Splice Box* not included. *Has to be Always supply by FLOS
					03.9265		White	
					05.1360		Copper	
					05.1361		Steel	
					05.1362		Bronze	
3000	90	3420	32,4	33°	03.9276	40 = White 14 = Black	Black	
					03.9275		White	
					05.1365		Copper	
					05.1366		Steel	
					05.1367		Bronze	
2700	90	3240	32,4	45°	03.8375	40 = White 14 = Black	Black	
					03.8374		White	
					05.1370		Copper	
					05.1371		Steel	
					05.1372		Bronze	
3000	90	3420	32,4	45°	03.8379	40 = White 14 = Black	Black	
					03.8378		White	
					05.1375		Copper	
					05.1376		Steel	
					05.1377		Bronze	

Photometrics



Light Shadow Fixed, Trimless 12L

NON-IC Ceiling Recessed Fixed Downlight.

Required Splice Box

Splice Box 40W, 1 dim, 0-10V, 120V. Size: 9" x 3.59" x 1.25"	Splice Box 40W, 1 dim, 0-10V, 277V. Size: 9" x 3.59" x 1.25"	
SP40W900MA-120-A01	SP40W900MA-277-A01	

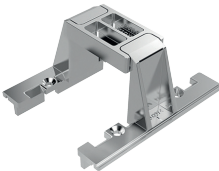
Required Accessories

Pre-installation trimless frame 8L 5/8" ceiling thickness
08.0518.00.90



Optional Accessories

Accessory for mounting trimless continuous line. Each accessory allows connection between two trimless pre-installation frames.
08.0052.90



Light Shadow Fixed, Trimless 12L

NON-IC Ceiling Recessed Fixed Downlight.

Continuous Lines | How to Specify

A. Select modules sizes and pre-installation frames

1. 2 Lights module
2. 4 Lights module
3. 8 Lights Module
4. 12 Module

B. Remove the endcap of the frames

C. Use the accessory to joint the frames

Each accessory allows connection between two trimless pre-installation frames.

D. Install the continuous frame in the drywall ceiling and place the light modules

