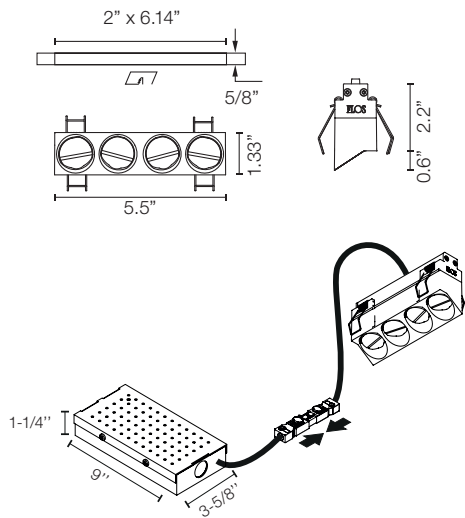




Dimensions



Certifications



Photometrics

For current IES files please visit arch.flosusa.com

Warranty

2 years from date of sale.

Light Shadow Wall-Washer, Trimless 4L

NON-IC Ceiling Recessed Wall-Washer Downlight.

Description

Flos introduces Light Shadow, a revolution in low-glare lighting. A patented and unique optical solution in this new family reaches extreme cut off angles without sacrificing efficiency. The optics have been designed exclusively by FLOS and guarantee maximum control and uniformity of the beam. Light Shadow is a downlight that can be perfectly incorporated into any architecture because of its extraordinary compact size that allows the integration even when there is a minimum space. The collection is available in 2/4/8/or 12 spots, trimmed or trimless, and fixed or adjustable. It can be mounted in a continuous row. The Light Shadow 4 spot is also available as a light element for Running Magnet 2.0.

Lamp

Table with 2 columns: Lamp Type, Wattage, Initial Lumens, Color Temperature, Color rendering. Values include LED, 10.8W, 1080lm, 1140lm, 2700K, 3000K, 3500K*, CRI 90.

Optical

Table with 2 columns: Beam Angle, Lighting Type, Light Distribution. Values include 22°, Direct, Asymmetric.

Physical

Table with 2 columns: Material, Aiming, Weight. Values include Aluminum, Fixed, Fixture: 0.75 Pounds.

Table with 2 columns: Ingress Protection Rating. Value is IP23.

Table with 2 columns: Finishes. Values are 40 White, 14 Black.

Table with 2 columns: Installation type. Value is Ceiling Recessed - Non IC.

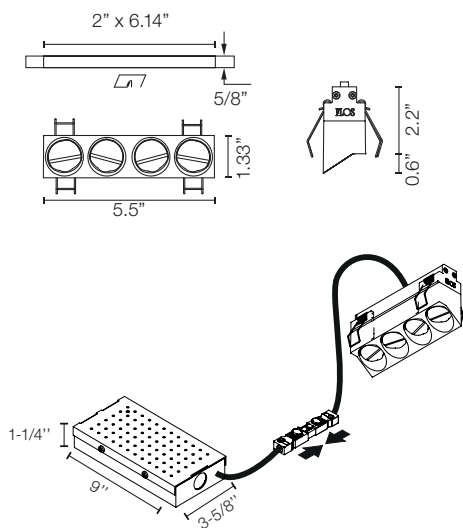
Table with 2 columns: Environment. Value is Indoor.

Table with 2 columns: Minimum Plenum height. Value is 6".

Table with 2 columns: Maximum Ceiling thickness. Value is 5/8" (1/2" also available).



Dimensions



Certifications



Photometrics

For current IES files please visit
arch.flosusa.com

Warranty

2 years from date of sale.

Light Shadow Wall-Washer, Trimless 4L

NON-IC Ceiling Recessed Wall-Washer Downlight.

Electrical & Control

| | |
|----------------------|---|
| Driver Input Voltage | 120V or 277V (depending on Selected Splice Box) |
| Control | 0-10V and ELV |
| Driver | Integral - Splice Box |
| Current | 900mA |

Performance

| | |
|--------------------------|---------------------|
| Maximum delivered output | From 684lm To 730lm |
| Efficacy | 67.6lm/W |

Notes

Black reflector provides the greatest comfort level

Integral LED board is not field replaceable.

Pre-Installation frame required.

Splice Box is installed from below.

Non IC rated luminaire

Splice Box required has to be ordered separately always from FLOS. 3 Standard Options:

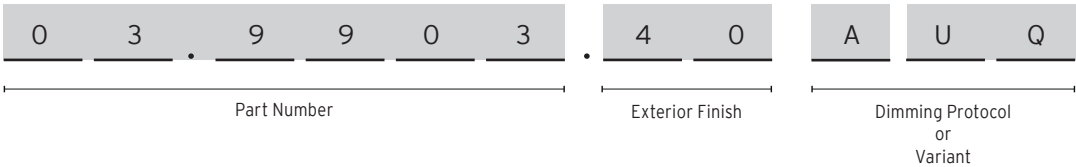
- 0-10V Dimming 120V
- 0-10V Dimming 277V
- ELV Dimming 120V

3500K and other CCT available but not cataloged. Consult factory for additional color temperatures.

Light Shadow Wall-Washer, Trimless 4L

NON-IC Ceiling Recessed Wall-Washer Downlight.

How to specify

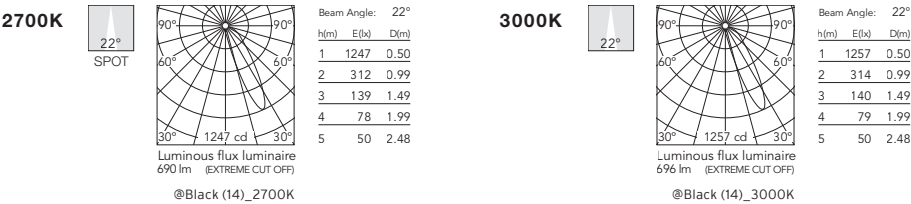


How to Specify ex. 03.9903.40AUQ

| CCT* | CRI | Initial Lumens | Delivered Lumens | Watts | Part Number | Exterior Finish | Variant |
|------|-----|----------------|------------------|-------|-------------|---|---|
| 2700 | 90 | 1080 | 684 | 10.8 | 03.9903 | <div>40 = White</div> <div>14 = Black</div> | AUQ : US product. Splice Box* not included. *Has to be Always supply by FLOS |
| 3000 | 90 | 1140 | 730 | 10.8 | 03.9902 | <div>40 = White</div> <div>14 = Black</div> | |

* 3500K and other CCT available but not cataloged. Consult factory for additional color temperatures.

Photometrics



Light Shadow Wall-Washer, Trimless 4L

NON-IC Ceiling Recessed Wall-Washer Downlight.

Required Accessories

Table with 3 columns: Accessory description, Part number, and Diagram.
Row 1: Splice Box 25W, 1 dim, 0-10V, 120V. Size: 9" x 3.59" x 1.25". SP25W900MA-120-A01.
Row 2: Splice Box 25W, 1 dim, 0-10V, 277V. Size: 9" x 3.59" x 1.25". SP25W900MA-277-A01.
Row 3: Splice Box 20W, 20 dim, ELV, 120V. Size: 9" x 2.22" x 1.25". SP20W900MA-ELV-C01.

Optional Accessories

Table with 2 columns: Accessory description and Part number.
Row 1: Pre-installation frame 4L. 08.0511.00.90. Includes diagram of a rectangular frame with dimensions 6-1/32", 1-27/32", and 1-49/64".
Row 2: Accessory for mounting trimless continuous line. Each accessory allows connection between two trimless pre-installation frames. 08.0052.90. Includes a 3D perspective diagram of the mounting bracket.

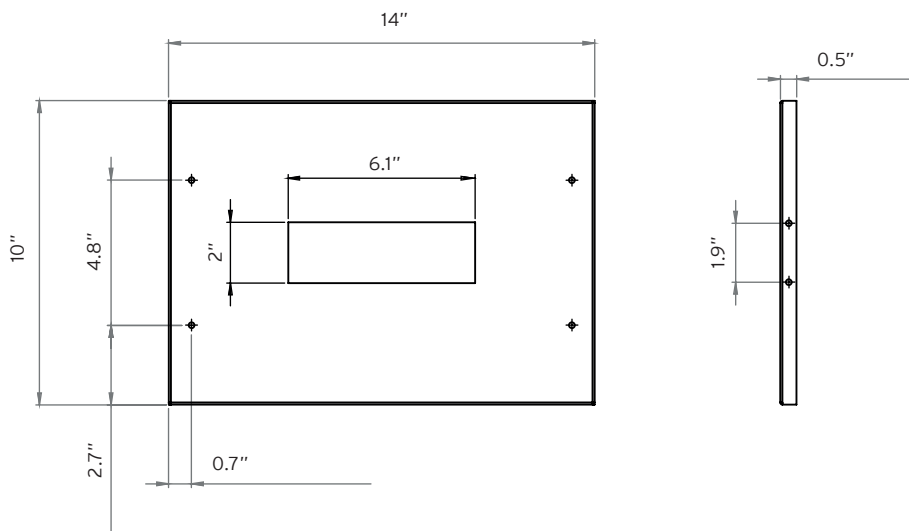
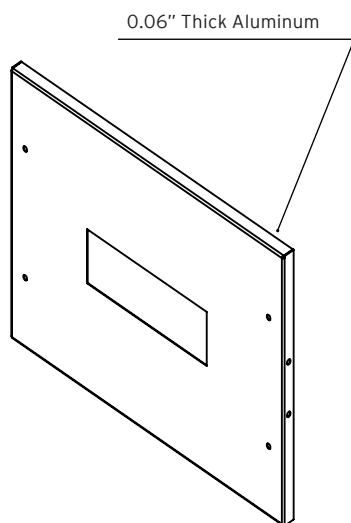
Light Shadow Wall-Washer, Trimless 4L

NON-IC Ceiling Recessed Wall-Washer Downlight.

Tray - Optional Accessories

Registration tray -non electrical, place holder for non IC new construction, 6.14" x 2"

TRAY-0036



How to install

A. Select desired Part number

C. Position the fixture

B. Select required dimming protocol

In order to have a better performance position the Light fixture 0.8m-31.5inch from the wall and 0.8m-31.5inch space between two consecutive downlights

