



SketchUp Webinar: **What's New in SketchUp 2024**

May 15, 2024

A handy guide to the contents of the webinar, must-have extensions, learning resources, and all you need to know about the SketchUp ecosystem.



What's New in SketchUp 2024



John Cummins

Customer Success Manager
SketchUp



Josh Reilly

Customer Success Manager
SketchUp



What's included

Learn more about the SketchUp ecosystem and some of the tools shown during the webinar.

A Winning Platform

Not just a 3D modelling application, we offer a suite of products built to enhance and accelerate a designer's workflow.

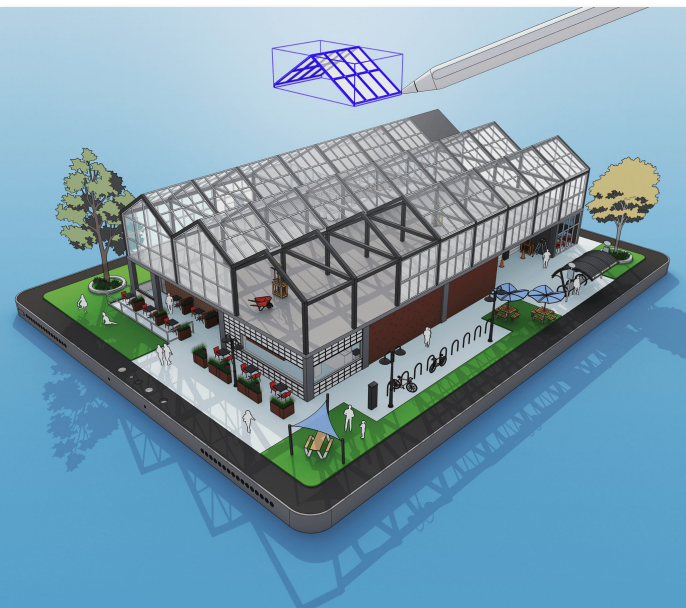




SketchUp for Desktop

SketchUp for Desktop is useful from the earliest stages of design all the way to final project delivery. Easy-to-use drawing tools are combined with the accuracy and detail needed to produce constructible models, stunning images, 2D documentation, cost estimates and material schedules.

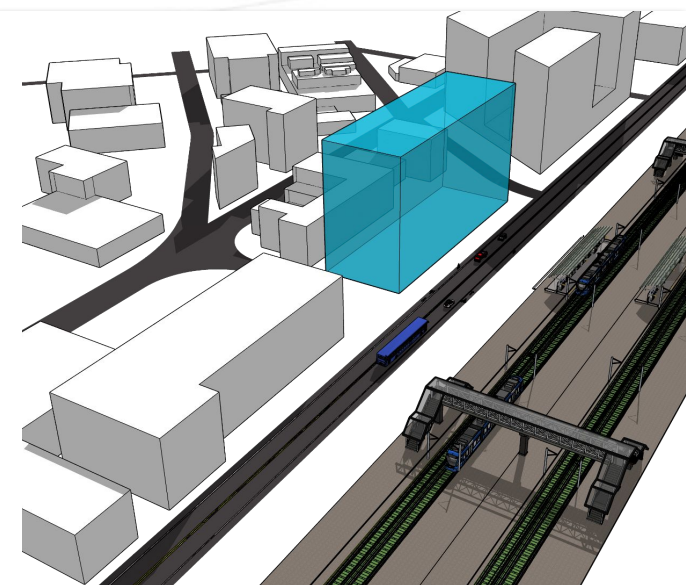
[Learn more >](#)



SketchUp for iPad

Sketch in 3D faster than ever using SketchUp for iPad's intuitive and versatile drawing tools — think Apple Pencil, multi-touch-gestures, and mouse and keyboard inputs. Store and access projects anytime in the cloud, and sync them across web, desktop, mobile, and tablet devices. SketchUp for iPad is fully context-enabled — pull in satellite imagery and 3D terrain data for site context, or situate your designs in the real-world using its AR capabilities.

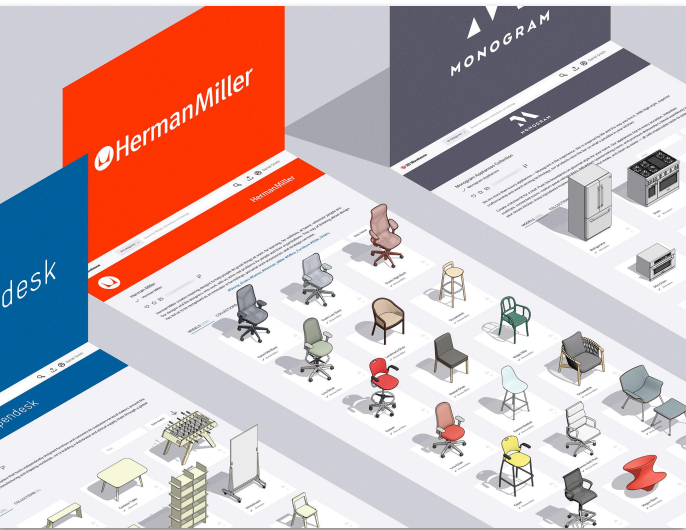
[Learn more >](#)



SketchUp for Web

With SketchUp for Web, the canvas for your next idea is just a browser tab away, all you need to get going is an internet connection. Our web-based modeler is a streamlined version of our desktop app that uses the same core technology. And, by saving projects to Trimble Connect, you're always working on the most up-to-date version of a model; you can even look-up version history.

[Learn More >](#)

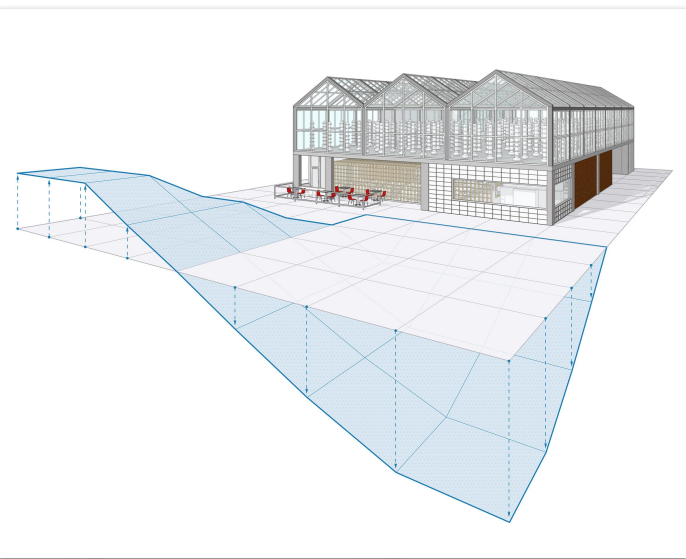


3D Warehouse

An online repository with millions of free models. Instantly add entourage and context to projects. Browse thousands of real-world products from recognized brands to specify appliances, furniture, floor coverings, and more.

Manufacturers leverage 3D Warehouse to increase brand awareness and generate leads by placing products in front of millions of potential buyers.

[3D Warehouse >](#) [Create an Account >](#)



Extension Warehouse

There are hundreds of third-party add-ons to extend the tools and features of SketchUp. Improve workflows by reducing time-consuming, complex, or repetitive processes. There are extensions for photorealistic rendering, reporting, parametric modeling, animation, and more.

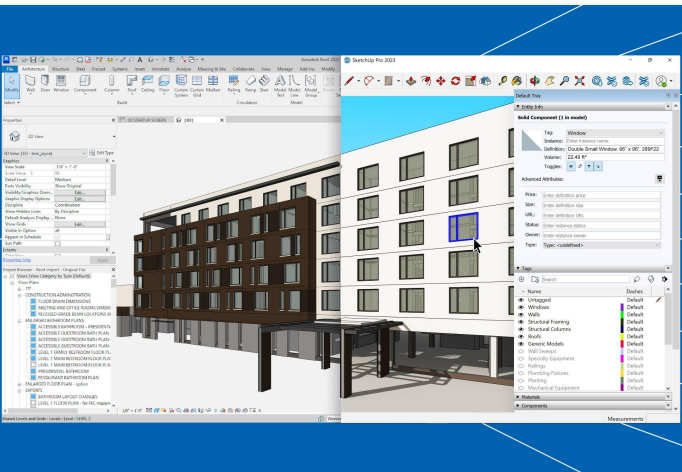
[Visit Extension Warehouse >](#)



LayOut

Combine models with text and 2D vector illustrations for beautiful presentations, permit submittals, construction documents, and other dimensioned drawings. 3D models are dynamically linked to LayOut files, and changes in SketchUp are instantly mirrored to documents.

[Learn more >](#)



Revit Importer

EXCLUSIVE TO SKETCHUP STUDIO

SketchUp's Revit Importer is a native functionality right within the Desktop modeling environment. It enables users to translate Revit families to optimized SketchUp components for quick, creative iteration at any project phase. *Windows only* [Learn More >](#)



V-Ray®

EXCLUSIVE TO SKETCHUP STUDIO

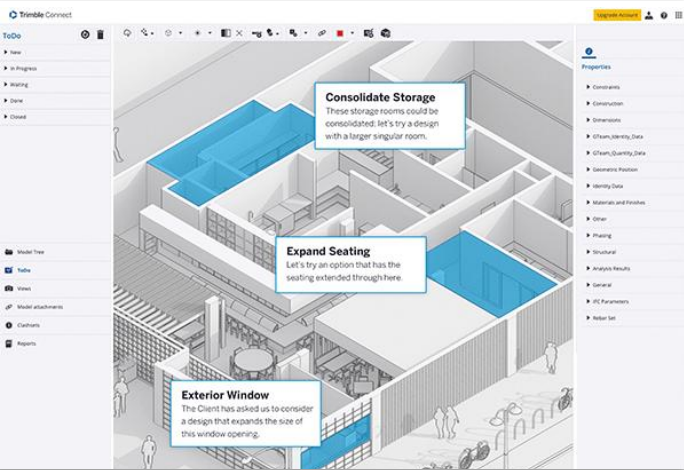
From detailed high-rise buildings to interior floor plans, add realism into your projects using V-Ray for SketchUp. V-Ray's powerful raytracing engine gives you access to your own virtual digital camera, plus you can access interactive, real-time visualizations as you model with V-Ray Vision. Create compelling imagery to present your design story, remove ambiguity, showcase your proposal's merits to clients, and win more work. [Learn more >](#)



Scan Essentials

EXCLUSIVE TO SKETCHUP STUDIO

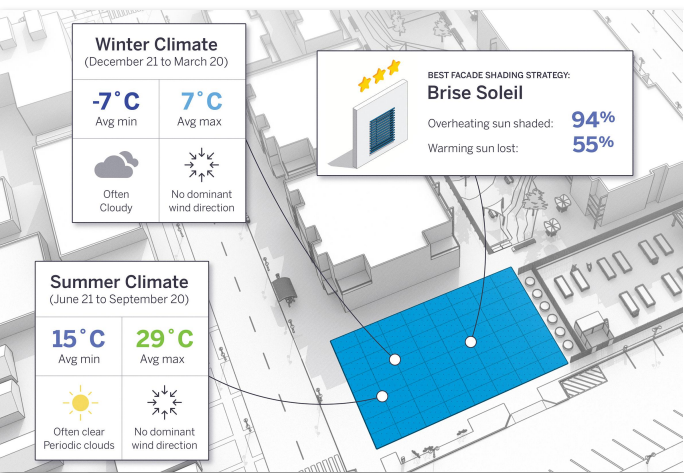
Unlock the power of point cloud data and increase your workflow efficiency. Easily access, view and create 3D assets from terrestrial scans, photogrammetry, lidar sensors, mobile mapping, and drone captures. Import, view, and transform this scan data into an invaluable 3D asset by directly modeling onto point clouds using SketchUp's native tools. *Windows only* [Learn more >](#)



Trimble Connect

Trimble Connect is a cloud-based platform that connects the right people to the right constructible data, at the right time. View, share, and access project information from anywhere at anytime.

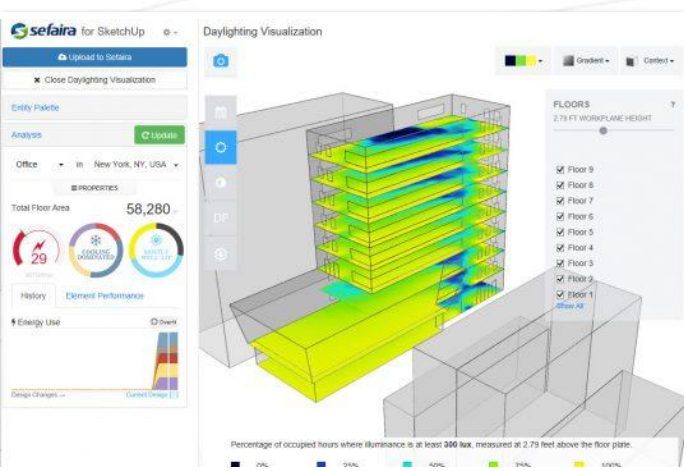
[Learn More >](#)



PreDesign

PreDesign is a new way to start your designs. With PreDesign, you can easily connect the dots between climate and concept design at the start of your project. Present compelling graphics to clients and steer your projects in the right direction.

[Learn more >](#)



Sefaira

Bring insightful building performance simulations to the conceptual design phase using Sefaira's energy and daylight analysis plugins in SketchUp. Dive deeper by assessing passive strategies for lower loads and active HVAC sizing in Sefaira's web app. Generate results powered by industry-accredited analysis engines within minutes.

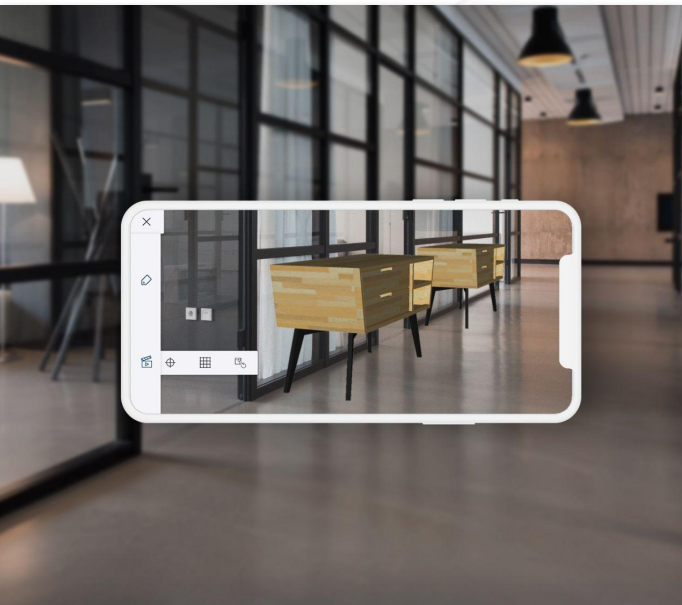
[Learn more >](#)



SketchUp Viewer for Meta Quest

Experience your 3D SketchUp models completely untethered in immersive mode or enjoy our new Home Environment to explore your 3D model in tabletop mode. Cycling through scenes within a model facilitates rapid decision making and can show construction sequencing.

[Download Viewer >](#)



SketchUp Viewer for Mobile

Access models from 3D Warehouse, Trimble Connect, or other cloud storage apps on mobile. View and present models with the familiar orbit, pan, and zoom tools. The viewer supports scenes, fly-through animations, layers, section planes, and styles.

Use AR features to merge 3D models with real-world context; reimagine room layouts, evaluate proposals in context or review projects.

[Download Viewers >](#)

What's New in SketchUp 2024

Unpack the latest tools available in SketchUp 2024



Top new features in 2024

SketchUp for Desktop 2024 offers a new layer of realism and innovative visual styles directly within the SketchUp interface, along with updates that amplify productivity.

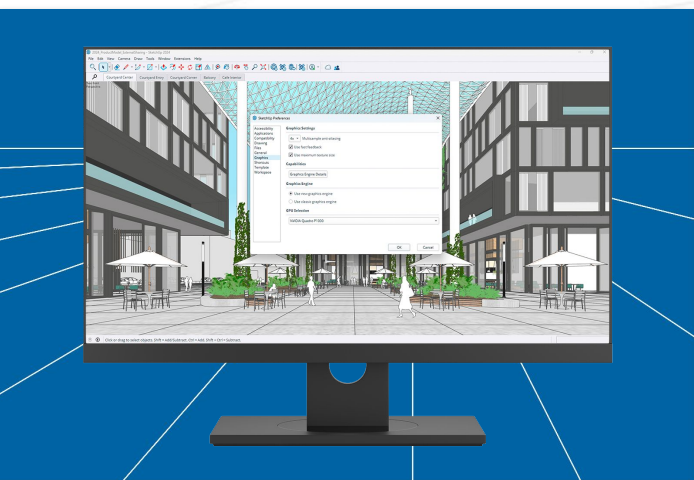
[2024 Launch blog >](#) | [SketchUp 2024 Video >](#)



Ambient Occlusion

Add visual emphasis and perceived depth at model edges with a new global style setting called Ambient Occlusion. This new feature can be tailored to produce stylized visuals similar to clay or white models without the need of a rendering engine and is available on Desktop, iPad, and visible in LayOut.

[Ambient Occlusion Video >](#)

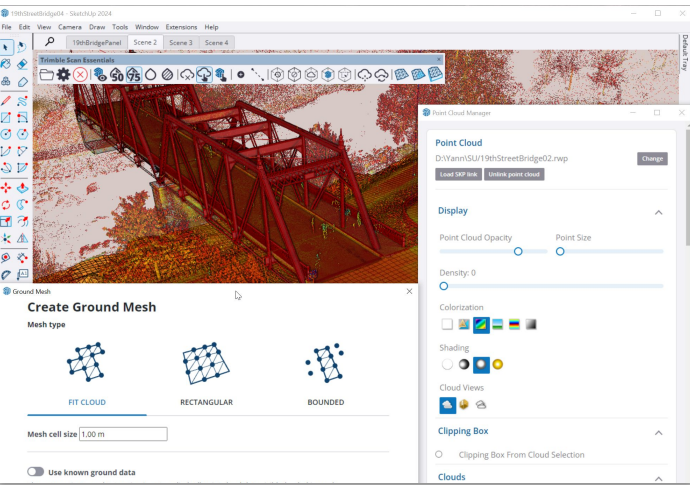


New graphics engine

SketchUp graphics engine got an upgrade! This new graphics engine takes advantage of emerging hardware and software technologies, providing notable improvements in file navigation and responsiveness.

**Performance improvements are dependent on your device.*

Learn more [here](#).

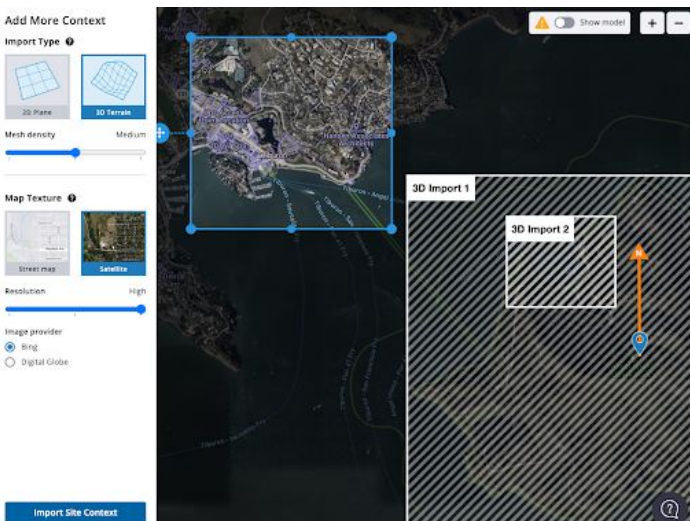


Ground Mesh Tool

EXCLUSIVE TO SKETCHUP STUDIO

This new Scan Essentials tool allows you to quickly and efficiently turn a terrain point cloud into an accurate, quad-face based, ground mesh with a chosen resolution. Choose from Fit Cloud, Rectangular, and Bounded options.

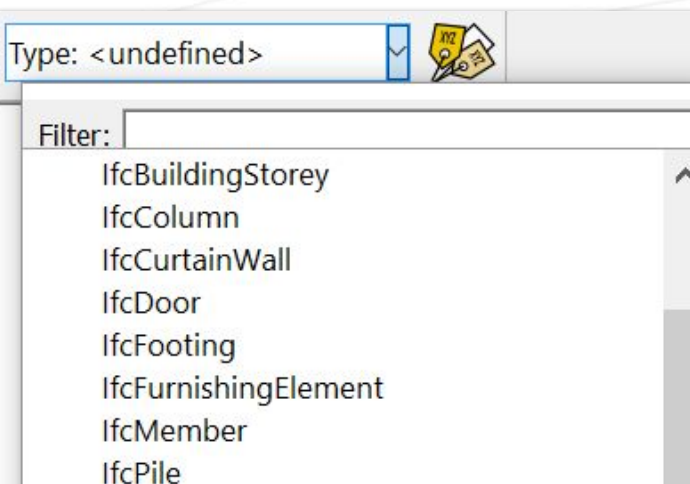
[Using Scan Essentials Article >](#)



Add Location

Enjoy more precise terrain data and simplified imports in Add Location, raising your confidence in bringing real-world data into SketchUp. Select low density for lighter, faster files and higher density for more detailed and precise terrain.

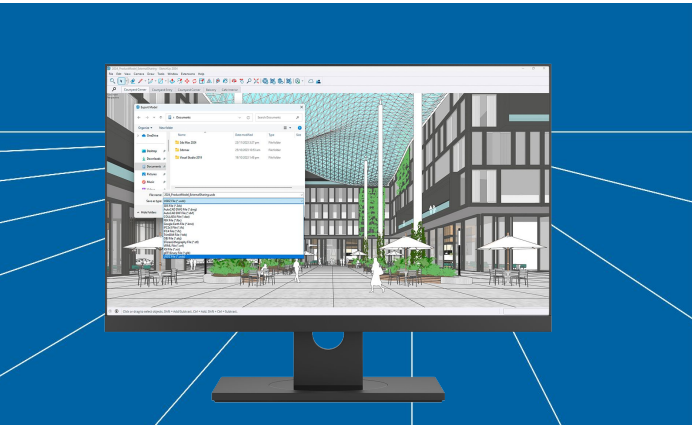
[Add Location Video >](#) | [More Information >](#)



IFC Improvements

Improvements to IFC import and export boost SketchUp's effectiveness in advanced BIM workflows. Benefit from enhanced mapping to IFC class attributes, and maintain data-rich models for improved project performance and BIM exports.

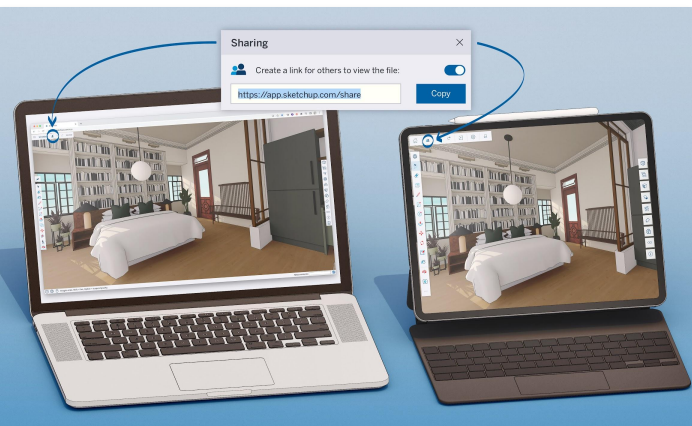
[Learn more about using IFC file in SketchUp >](#)



New 3D file formats

Import and export functionality for both USDZ and glTF files is now available. SketchUp opens up new possibilities for advanced visualization workflows and seamless transitions to and from industry-standard digital content creation tools.

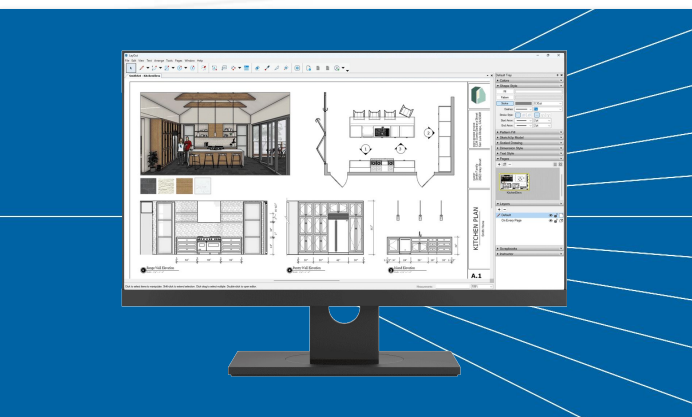
Don't forget to check out this [blog post](#)



Link Sharing

Link Sharing functionality is now on Desktop, matching the capabilities of iPad and Web. Available through the File menu or the new Trimble Connect toolbar, this tool generates a link to a view-only version of your SketchUp model in SketchUp for Web's Viewer.

[Give it a try](#) | [Link Sharing Video](#)



LayOut improvements

2024 release introduces Draft Mode, improved file support, updates to LayOut inferencing and Versionless to streamline your workflows within LayOut. Enjoy more efficient navigation, faster performance, and visual depth with AO even with the most developed, complex LayOut files.

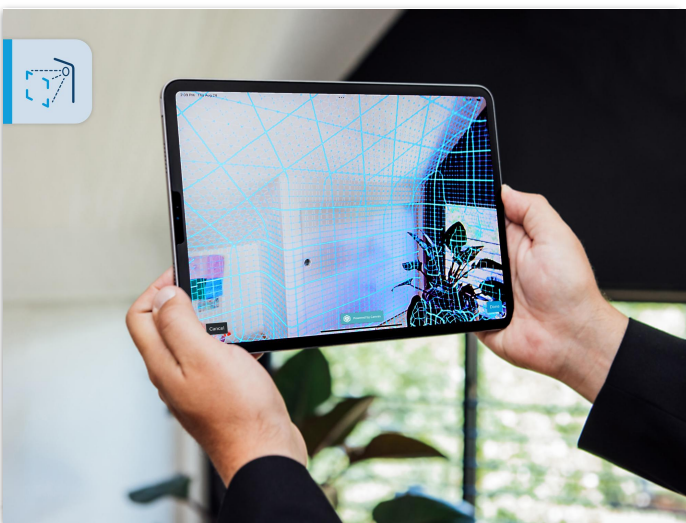
Learn more [here](#)



SketchUp for iPad 6.5

Scan, design, and collaborate — all on iPad. Scan-to-Design[Labs], will revolutionize your scanning, model creation, and design process. In addition, enhancements like Ambient Occlusion and Omnibar await you in this SketchUp for iPad update.

[Blog post](#) | [Scan-to-Design video](#)

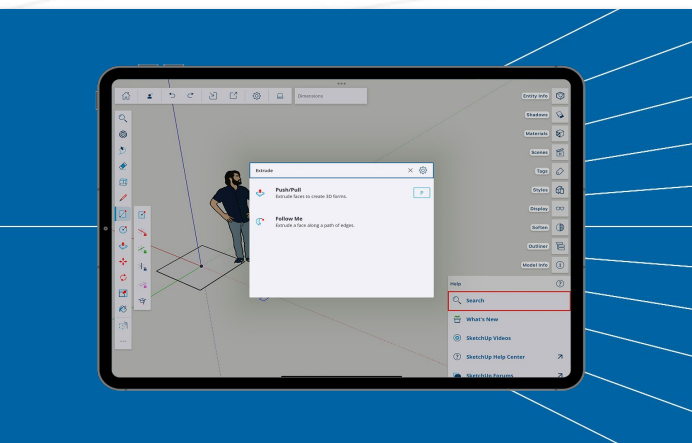


Scan-to-Design[Labs]

AVAILABLE ON SKETCHUP FOR IPAD

Give yourself a head start on conceptual design and capture as-built conditions quickly with this powerful LiDAR-scanning feature. Scan existing spaces and watch as SketchUp, powered by Canvas, Apple's and Trimble's cutting edge technology, transforms your scan data into an intelligently organized 3D SketchUp model.

[Learn More](#) | [Scan to Design Help Center](#)



Omnibar

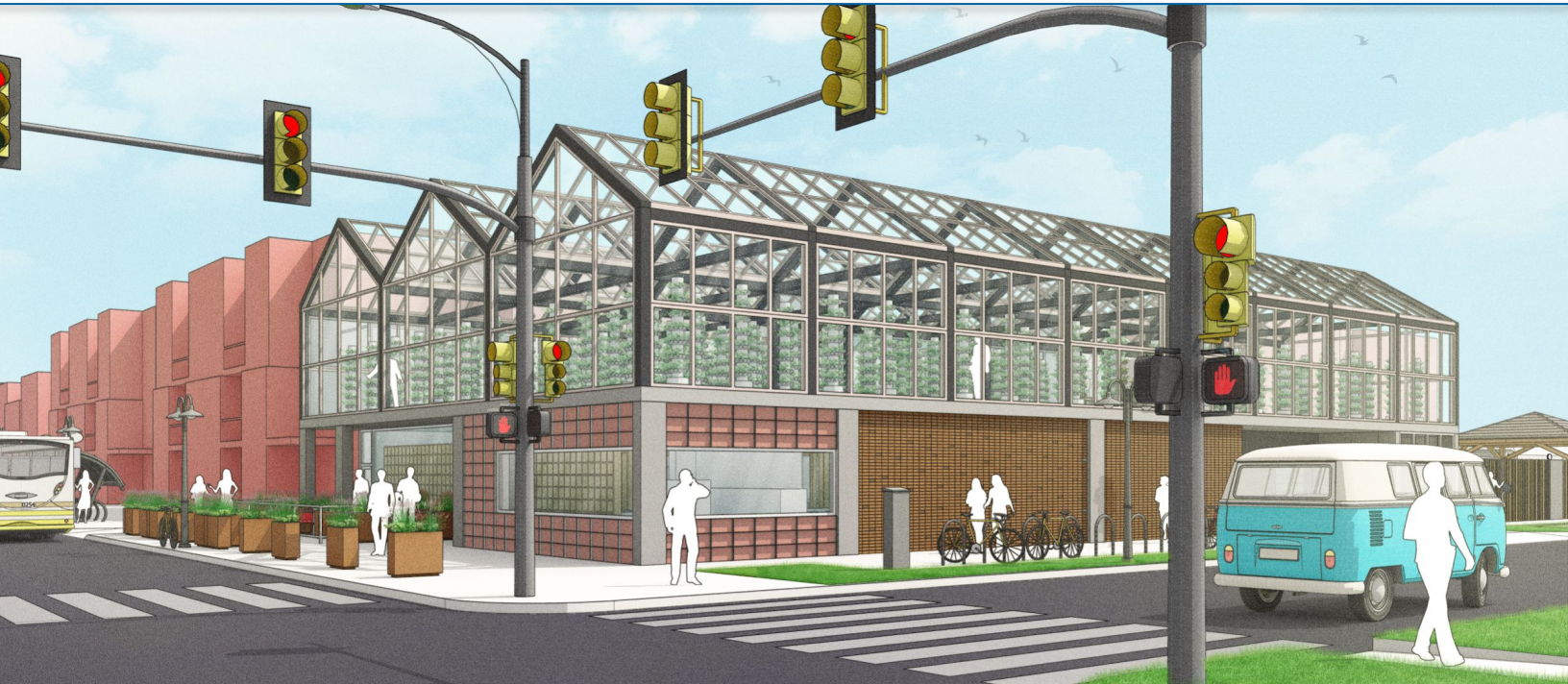
AVAILABLE ON SKETCHUP FOR IPAD

New navigation tool with advanced search functionality that helps you find what you need faster and allows you to create and activate custom keyboard shortcuts.

[Watch Video](#)

Extensions & Resources

Supercharge your SketchUp workflow with these must-have extensions.



Extensions

Whatever you do with SketchUp, odds are that there is an extension out there that will help you to do it better/quicker/easier. Extensions are bits of software that run inside of SketchUp that give you additional functionality within the native design environment.

Extension Warehouse

Check out our online repository of extensions, [Extension Warehouse](#), for a full list of certified extensions available to you.

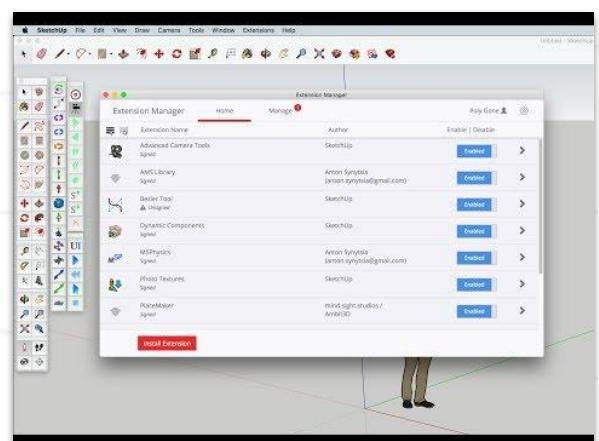
If the Extension Warehouse is not quite enough for you, you may want to take a look at the extensions available on the [SketchUp Plugin Store](#) (note you will need to [register for a free account](#) to download from the Plugin Store).

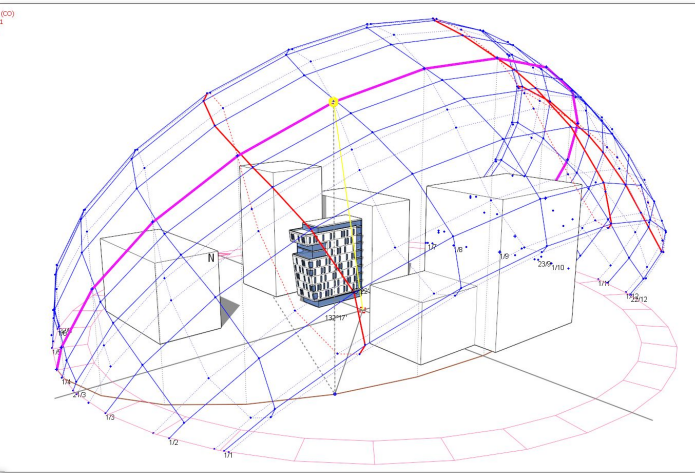
Not sure where to start?

750+ extensions might leave you feeling overwhelmed. We've shortlisted some essential SketchUp extensions that will improve the productivity of your team. Some of these plugins are free, but we have indicated the commercial extensions with a (C).

Installing extensions

For information on installing extensions, check out [this video](#) for step-by-step instructions.





Curic Sun

Curic sun helps you visualize the position of the sun in relation to your building geometry. The extension helps designers understand how the sun traverses across the sky and how that direction might influence the position of windows or shading devices on your project.

[More Information](#)



Raster Image Import

SketchUp allows you to import images as textures, or references to start your project or enhance your model.

[More information](#)

Skill Builder: [Reference Images for Architecture](#)



PlaceMaker

This extension allows you to easily add context to your model by importing OpenStreetMap roads, buildings, paths, water bodies, trees, and high-res aeri

[More information](#)

SketchUp Video: [SketchUp Extension Inspection - PlaceMaker](#)



LayOut for Interiors

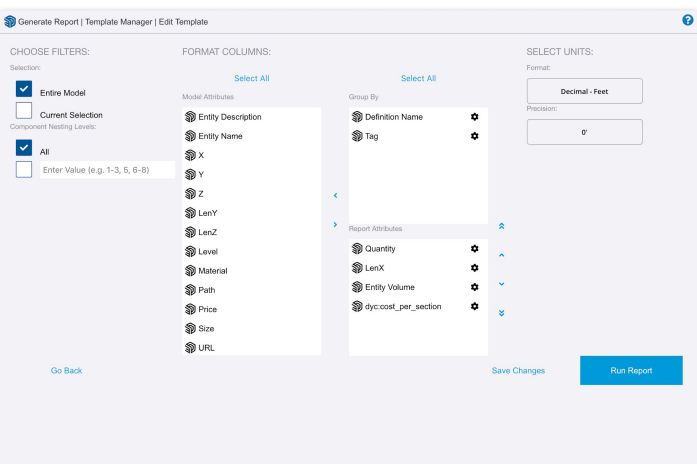
Want to share your SketchUp model with others? Turning 3D models to 2D documents and presentations has never been easier using LayOut.

[More information](#)

Tutorial: [LayOut Essentials](#)

Skill-BUILDER: [Let's Talk LayOut](#)

Video: [Layout for Interiors](#)

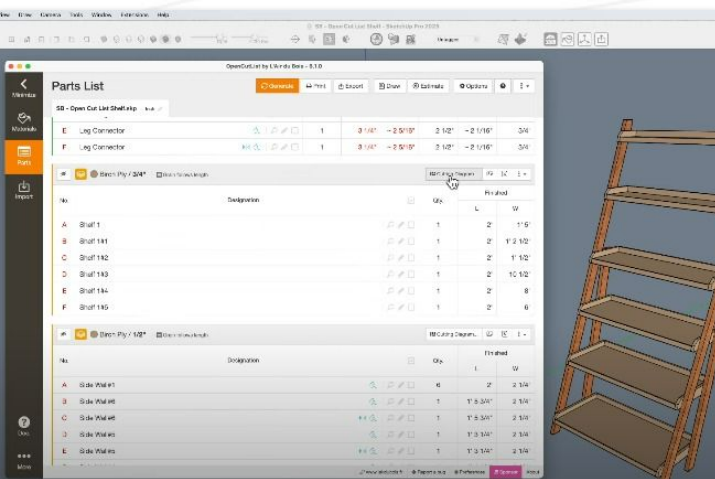


Generate Reports

SketchUp Pro can generate tabular reports from the groups and components in your models. It's a simple operation, and provided you've set things up properly, it can save you a ton of time.

[More information](#)

Skill Builder: [SketchUp Skill Builder: Door and Window Schedule](#)

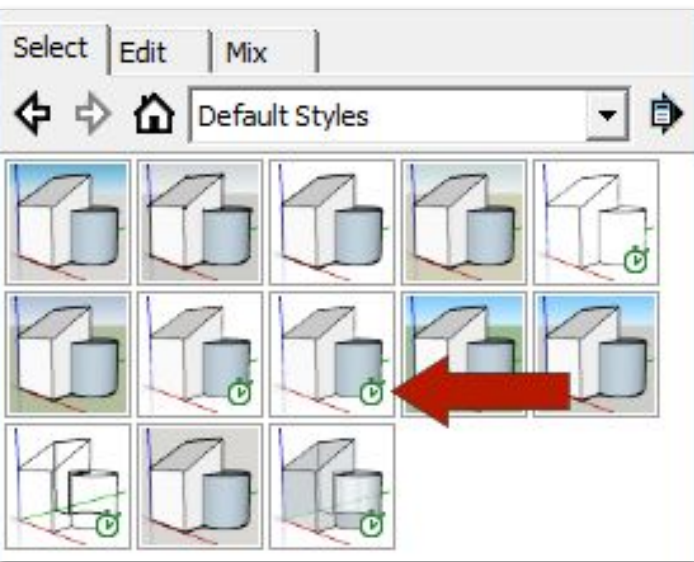


Generate Cutlists

Have you ever struggled with organizing your project materials or creating efficient cut lists? Open CutList extension generates cut lists, estimates, cutting diagrams, labels, exploded views, SVG, DXF for woodworking or similar projects.

[More information](#)

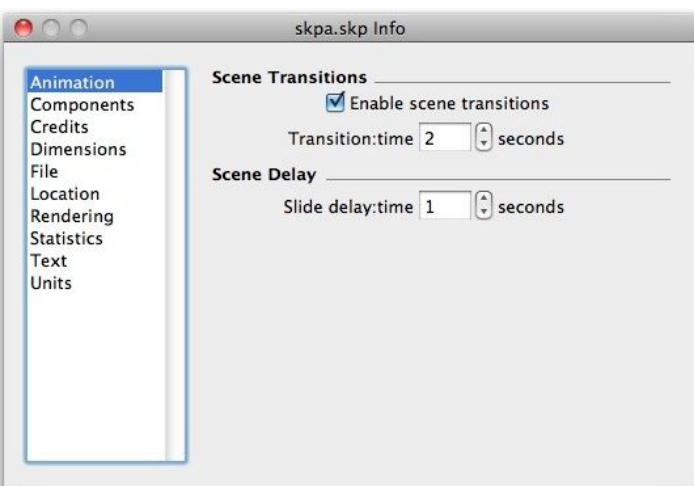
SketchUp Video: [Open Cut List | SketchUp Woodworking Extension](#)



Fast Styles

When in the Styles tray, you see a small green stopwatch icon in the bottom right corner of a Style thumbnail that means that this Style features a combination of settings that won't slow you down while modeling. SketchUp auto-detects Styles that use less processing power — this earns them the 'Fast Style' badge.

[More information](#)

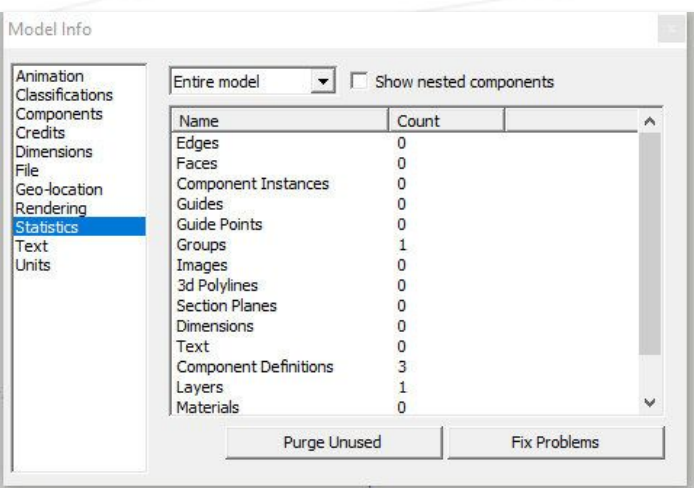


Scene Transitions

SketchUp can animate scenes of a 3D model by transitioning between scenes. However, that can slow you down.

To disable it select **View > Animation > Settings** or select **Window>Model Info**, select the **Animation** option in the sidebar and disable the 'Enable Scene Transitions' checkbox.

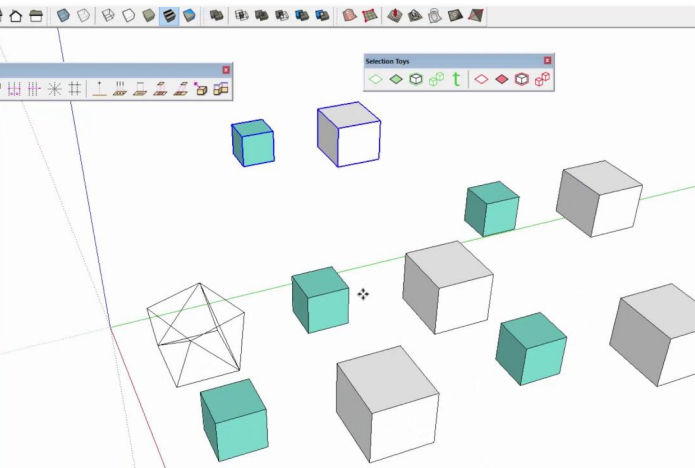
[More information](#)



Purge

Your model stores components, styles, and materials that you've added to your model even if you've since erased or replaced them. SketchUp squirrels away these elements in case you need them later, but if you know that you don't, tell SketchUp to let it all go. Select **Window > Model Info**, select **Statistics** in the sidebar on the left, and click the **Purge Unused** button.

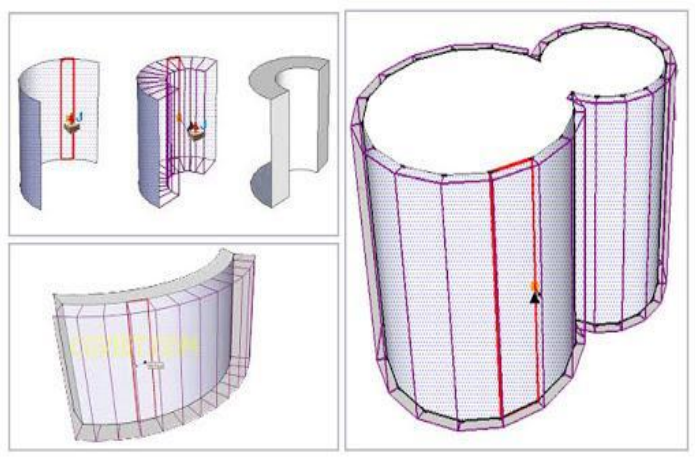
[More information](#)



Selection Toys

You can use this extension as a selection filter to make smart selections in SketchUp.

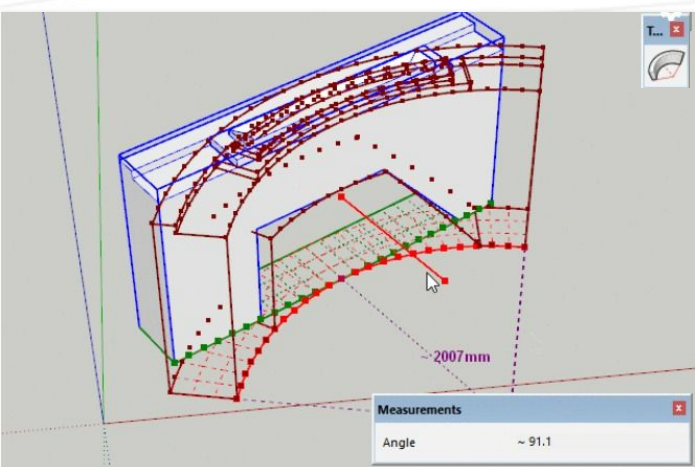
[More information](#)



JointPushPull

With JointPushPull you can easily add thickness to your surfaces and it even works with smoothed surfaces. To get this extension you have to register to SketchUcation.com.

[More information](#)



TrueBend

TrueBend extension allows you bend geometry instances to a given degree, preserving the original length of the reference segment.

[More information](#)



Enscape for SketchUp

Enscape™ is a real-time rendering and virtual reality extension that plugs directly into SketchUp. You can design, document, and visualize simultaneously from one model.

Enscape allows you to work intuitively with accessible rendering that requires no prior specialized knowledge to use. It is the easiest and fastest way to turn your models into immersive 3D experiences.

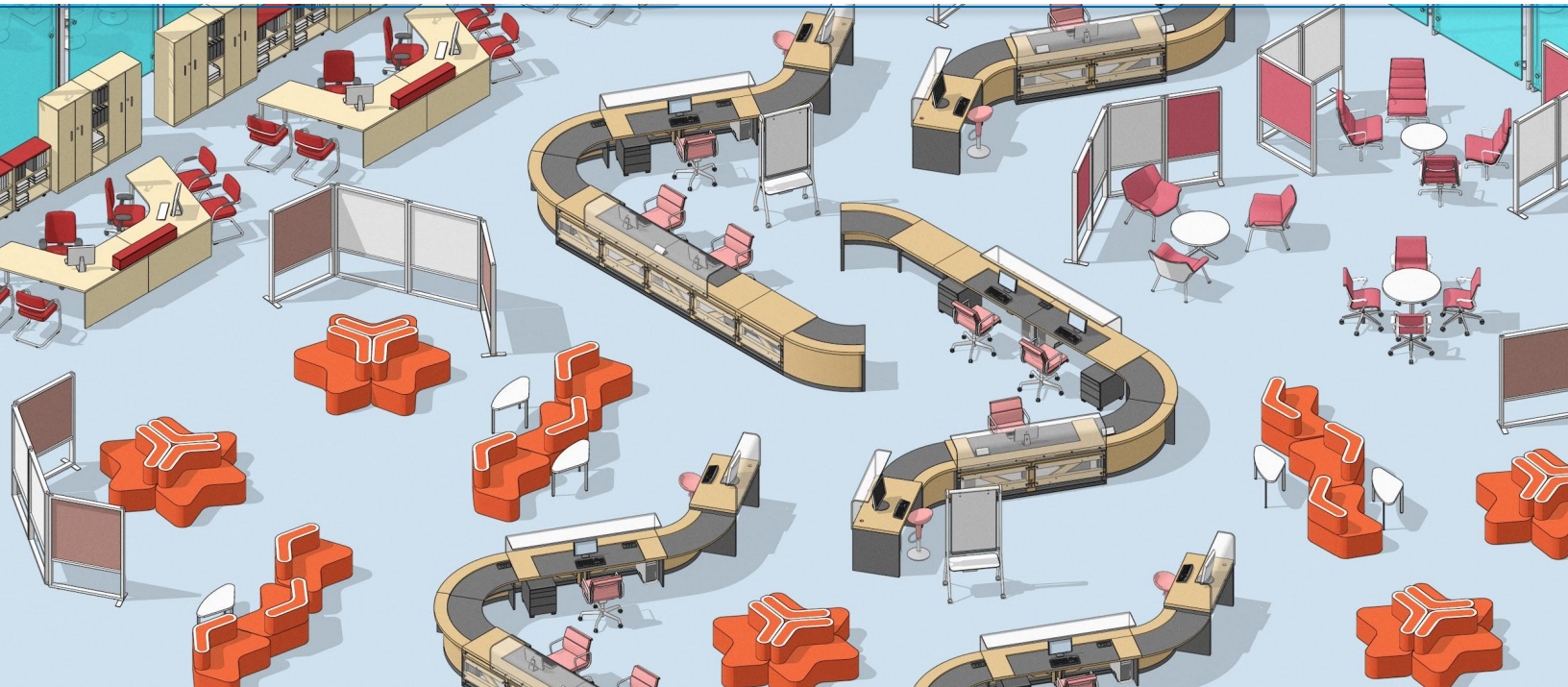
[More Information](#)



Lumion for SketchUp

By pairing your SketchUp modeling with Lumion rendering, you can dramatically reduce the amount of time it takes to create beautiful images, videos and 360 panoramas of your designs.

[More information](#)



Learning Resources

 [SketchUp Blog >](#)

SketchUp's blog hosts our latest written content.

 [SketchUp TV >](#)

SketchUp's official YouTube channel.

 [SketchUp Campus >](#)

SketchUp's formal learning platform.

 [SketchUp Forum >](#)

Connect with SketchUp's community and ask any technical questions.

 [SketchUp Talk >](#)

SketchUp's podcast on iTunes.

Connect with us

