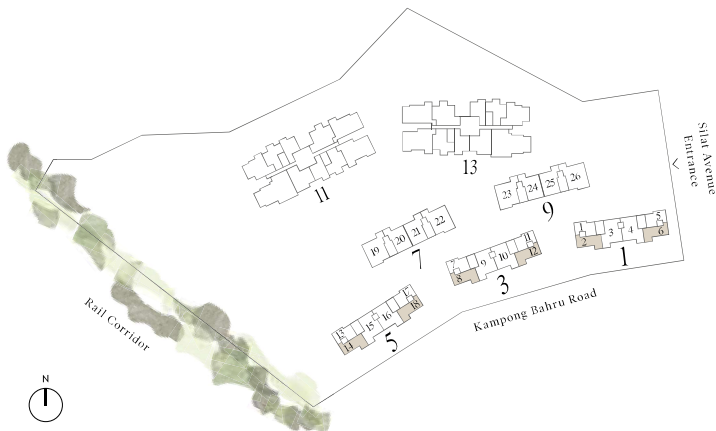
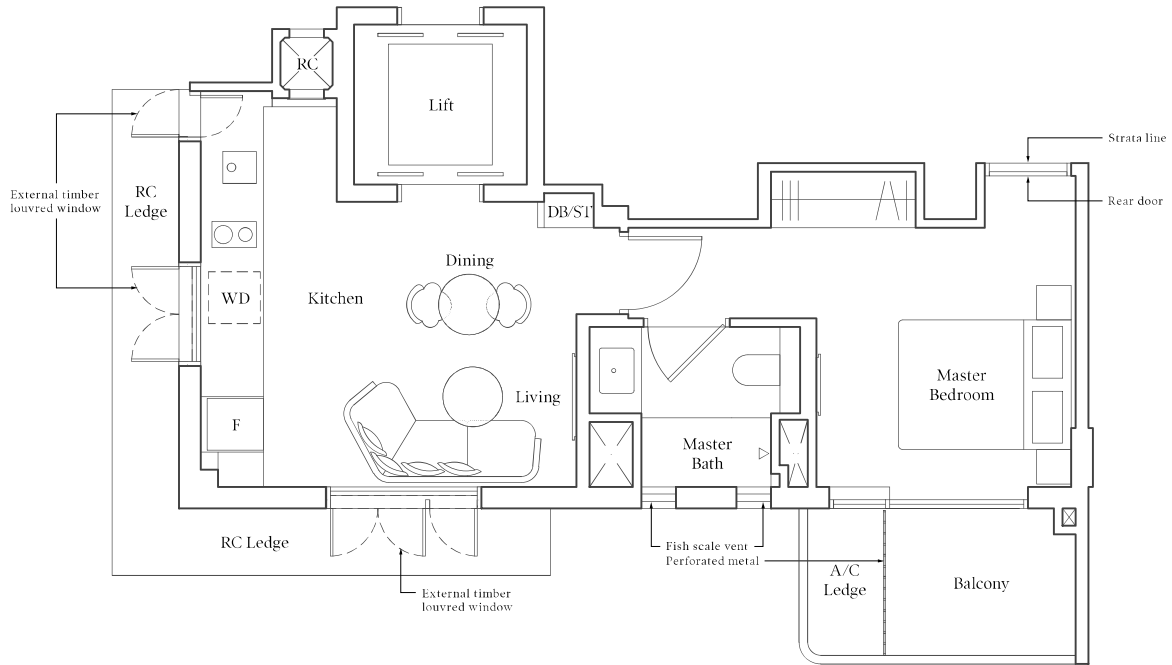


I-BEDROOM CLASSIC

● Type AC1 | 44 sqm | 474 sqft

#02-02 to #04-02	*Mirror
#02-08 to #04-08	#02-06 to #04-06
#02-14 to #04-14	#02-12 to #04-12
	#02-18 to #04-18

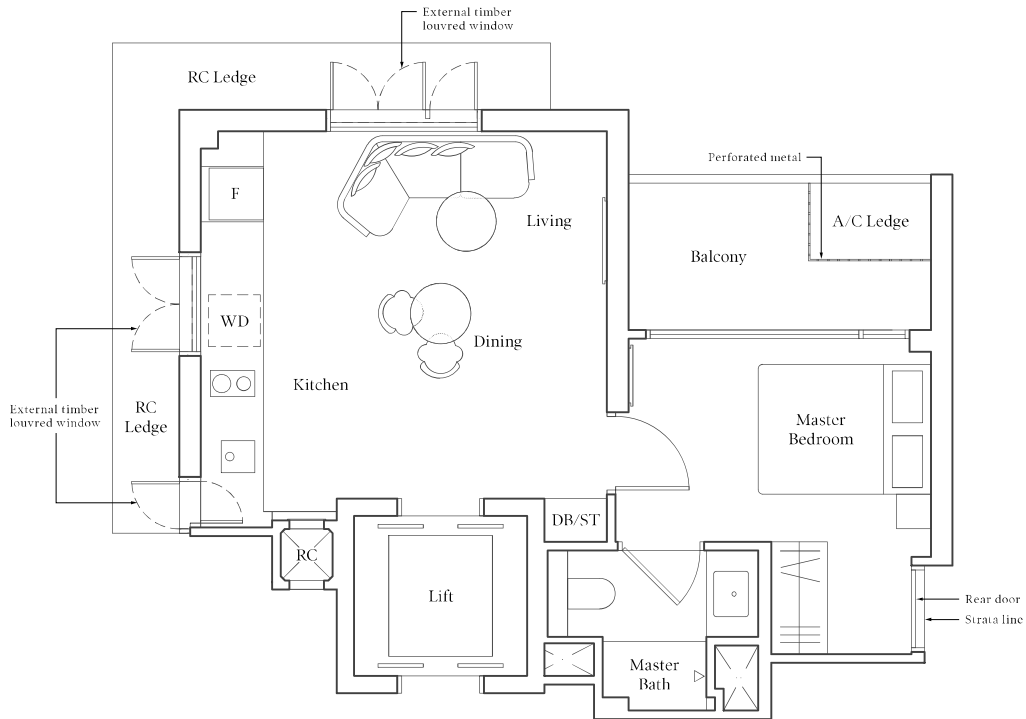


Note: Area includes A/C ledge, balcony, pes, private roof terrace and void (where applicable). RC ledge is not part of strata area. The above plans and illustrations are subject to changes as maybe required by the relevant authorities. Areas are estimates only and are subject to final survey. The balcony, pes, and private roof terrace shall not be enclosed unless with the approved screen. For an illustration of the approved balcony screen, please refer to the diagram annexed hereto as "Annexure I".

I-BEDROOM CLASSIC

Type AC2 | 46 sqm | 495 sqft

#02-01 to #04-01 *Mirror
#02-05 to #04-05
#02-07 to #04-07 #02-11 to #04-11
#02-13 to #04-13 #02-17 to #04-17



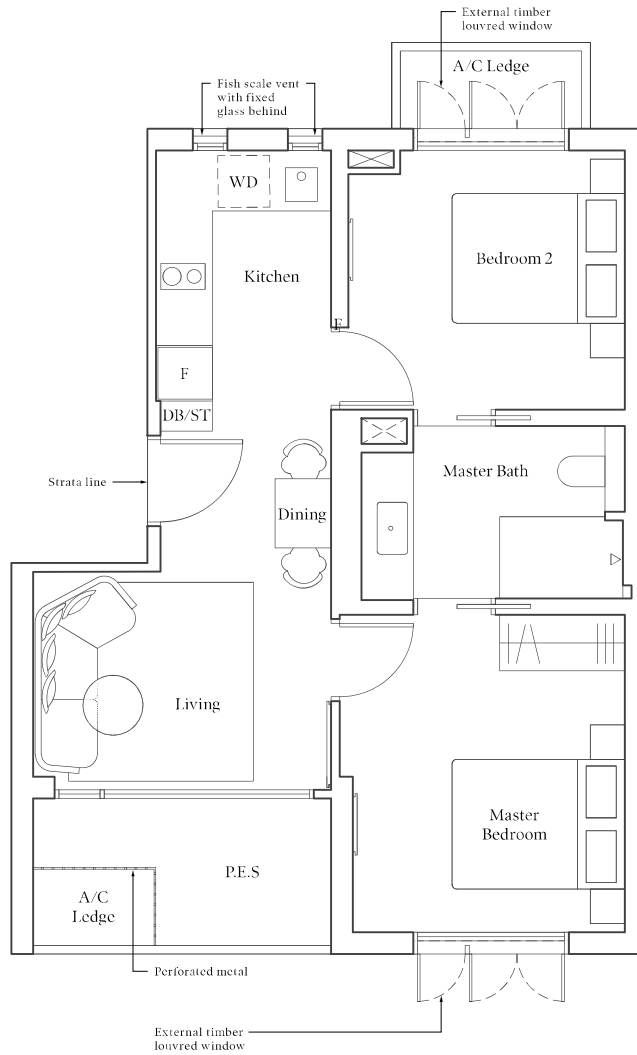
Note: Area includes A/C ledge, balcony, pes, private roof terrace and void (where applicable). RC ledge is not part of strata area. The above plans and illustrations are subject to changes as maybe required by the relevant authorities. Areas are estimates only and are subject to final survey. The balcony, pes, and private roof terrace shall not be enclosed unless with the approved screen. For an illustration of the approved balcony screen, please refer to the diagram annexed hereto as "Annexure I".

2-BEDROOM CLASSIC

● Type BC1-G | 61 sqm | 657 sqft

#01-20
#01-24

*Mirror
#01-21
#01-25

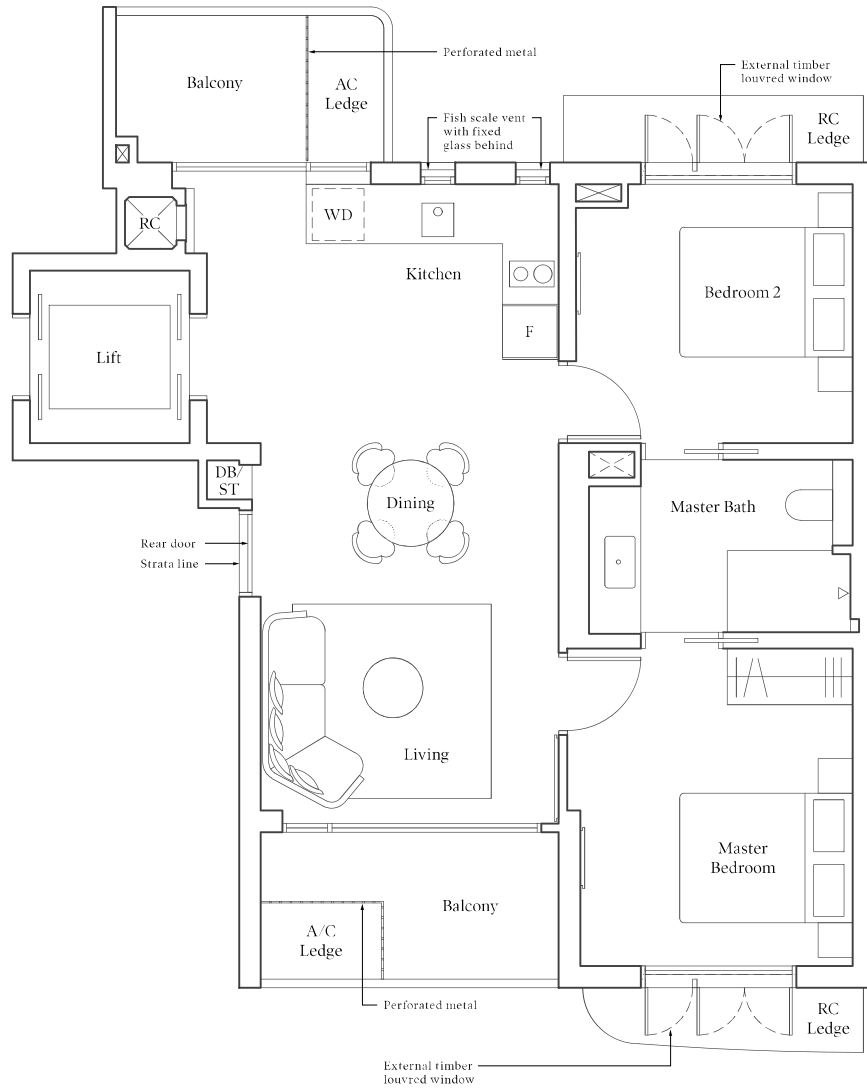


Note: Area includes A/C ledge, balcony, pes, private roof terrace and void (where applicable). RC ledge is not part of strata area. The above plans and illustrations are subject to changes as maybe required by the relevant authorities. Areas are estimates only and are subject to final survey. The balcony, pes, and private roof terrace shall not be enclosed unless with the approved screen. For an illustration of the approved balcony screen, please refer to the diagram annexed hereto as "Annexure I".

2-BEDROOM CLASSIC

● Type BC1 | 75 sqm | 807 sqft

#02-20 to #04-20 *Mirror
#02-21 to #04-21
#02-24 to #04-24 #02-25 to #04-25



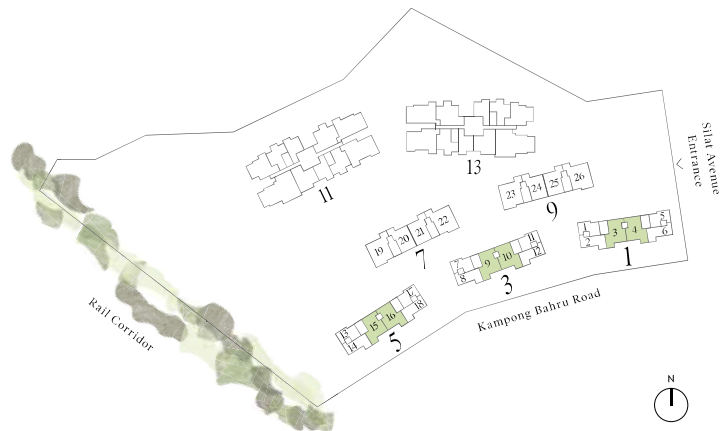
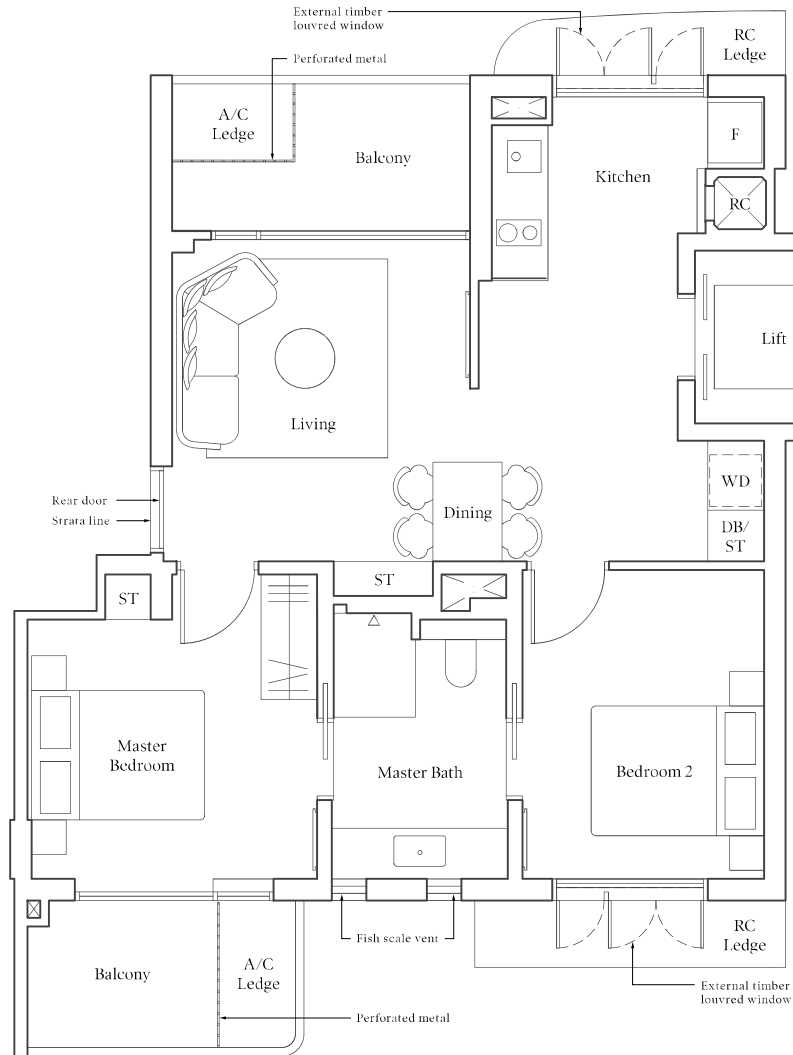
Note: Area includes A/C ledge, balcony, pes, private roof terrace and void (where applicable). RC ledge is not part of strata area. The above plans and illustrations are subject to changes as maybe required by the relevant authorities. Areas are estimates only and are subject to final survey. The balcony, pes, and private roof terrace shall not be enclosed unless with the approved screen. For an illustration of the approved balcony screen, please refer to the diagram annexed hereto as "Annexure I".

2-BEDROOM CLASSIC PREMIUM

● Type BC2 | 75 sqm | 807 sqft

#02-03 to #04-03	*Mirror
#02-09 to #04-09	#02-04 to #04-04
#02-15 to #04-15	#02-10 to #04-10
	#02-16 to #04-16

TYPICAL PLAN



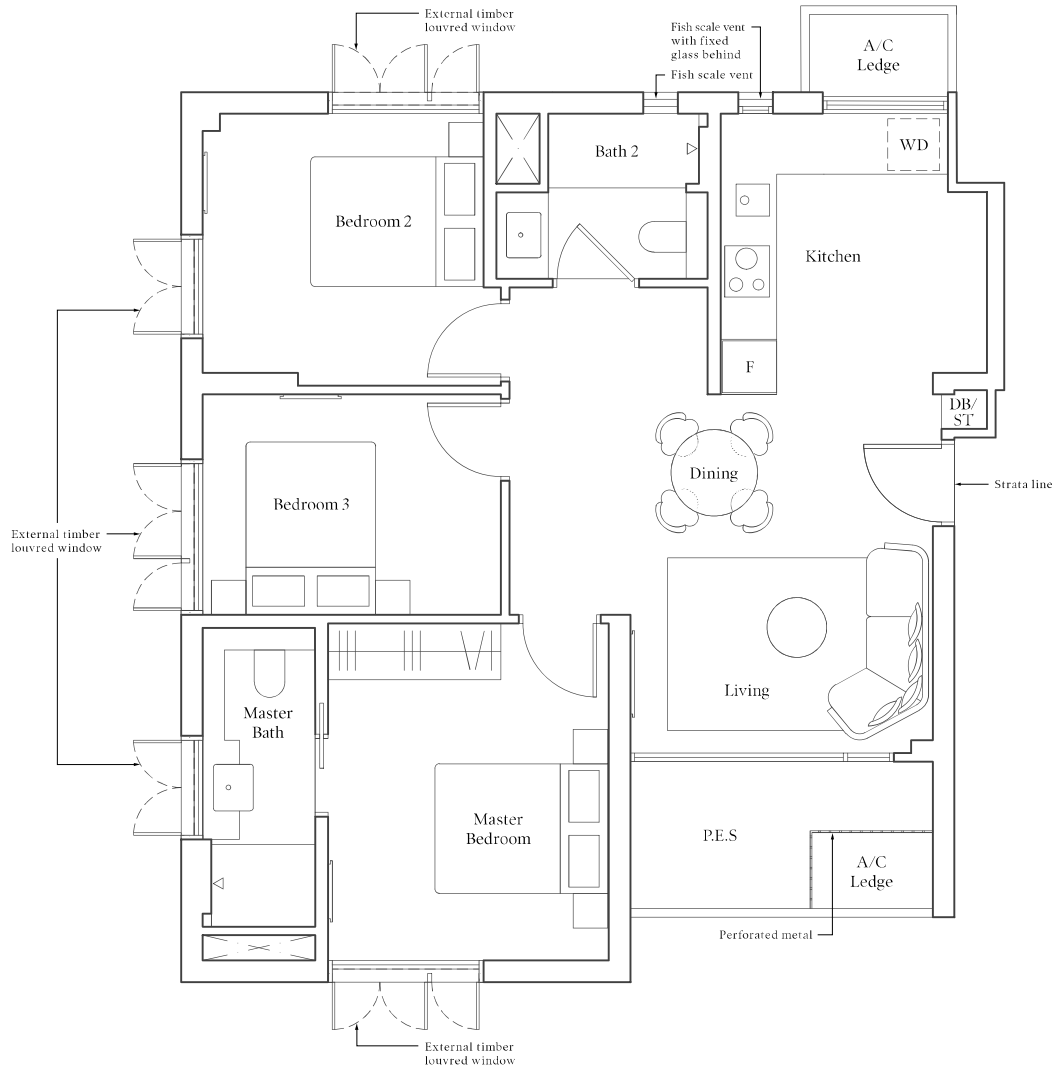
Note: Area includes A/C ledge, balcony, pes, private roof terrace and void (where applicable). RC ledge is not part of strata area. The above plans and illustrations are subject to changes as maybe required by the relevant authorities. Areas are estimates only and are subject to final survey. The balcony, pes, and private roof terrace shall not be enclosed unless with the approved screen. For an illustration of the approved balcony screen, please refer to the diagram annexed hereto as "Annexure I".

3-BEDROOM CLASSIC

● Type CC1-G | 88 sqm | 947 sqft

#01-19
#01-23

*Mirror
#01-22
#01-26



Note: Area includes A/C ledge, balcony, pes, private roof terrace and void (where applicable). RC ledge is not part of strata area. The above plans and illustrations are subject to changes as maybe required by the relevant authorities. Areas are estimates only and are subject to final survey. The balcony, pes, and private roof terrace shall not be enclosed unless with the approved screen. For an illustration of the approved balcony screen, please refer to the diagram annexed hereto as "Annexure I".

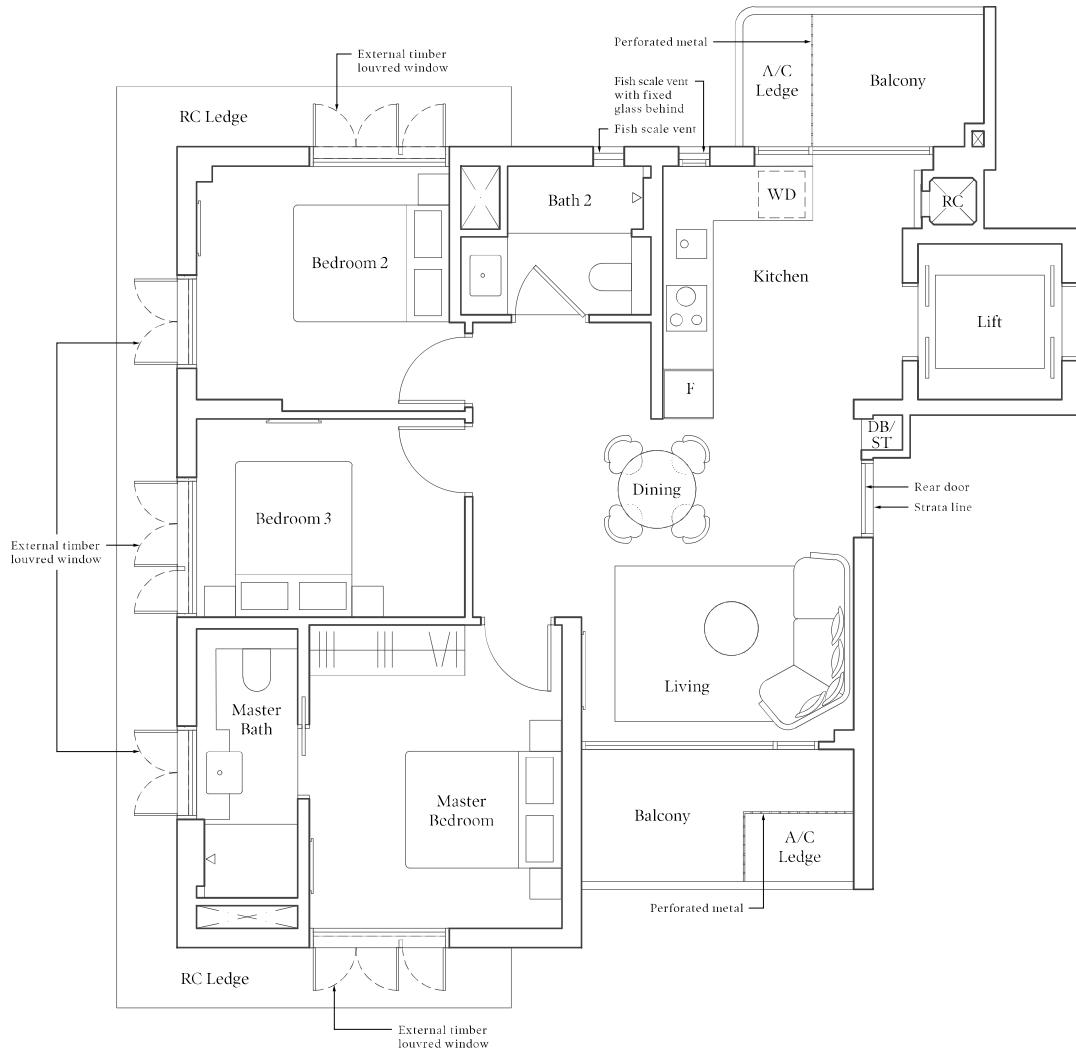
3-BEDROOM PREMIUM CLASSIC

Type CC1 | 93 sqm | 1001 sqft

#02-19 to #04-19
#02-23 to #04-23

*Mirror
#02-22 to #04-22
#02-26 to #04-26

TYPICAL PLAN



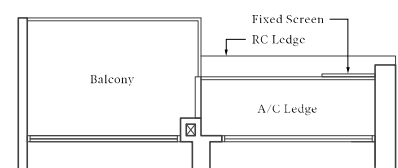
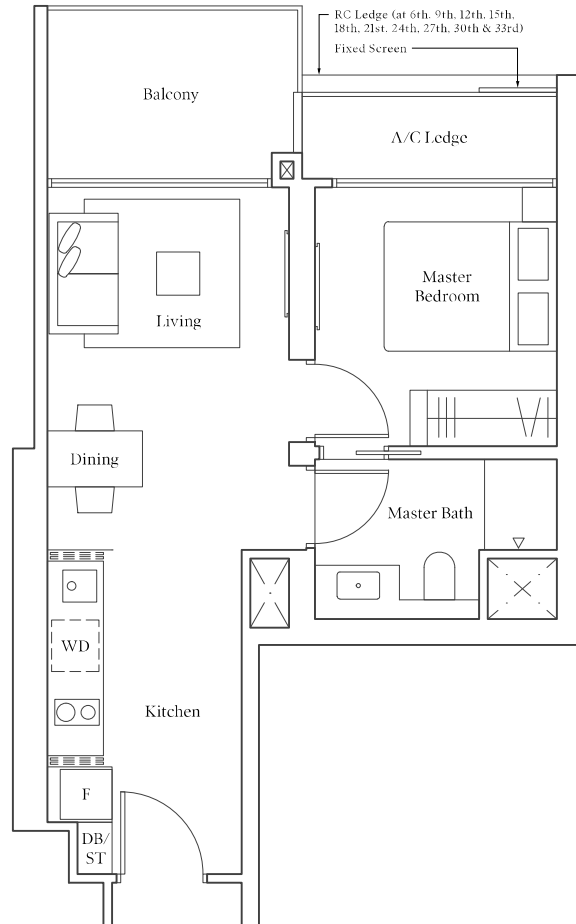
Note: Area includes A/C ledge, balcony, pes, private roof terrace and void (where applicable). RC ledge is not part of strata area. The above plans and illustrations are subject to changes as maybe required by the relevant authorities. Areas are estimates only and are subject to final survey. The balcony, pes, and private roof terrace shall not be enclosed unless with the approved screen. For an illustration of the approved balcony screen, please refer to the diagram annexed hereto as "Annexure I".

I-BEDROOM

Type A1 | 49 sqm | 527 sqft

#04-34 to #18-34
#20-34 to #35-34

*Mirror
#04-44 to #18-44
#20-44 to #35-44



#03-34

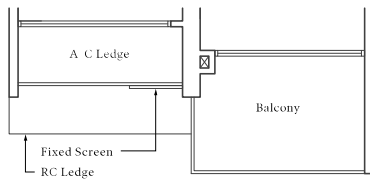
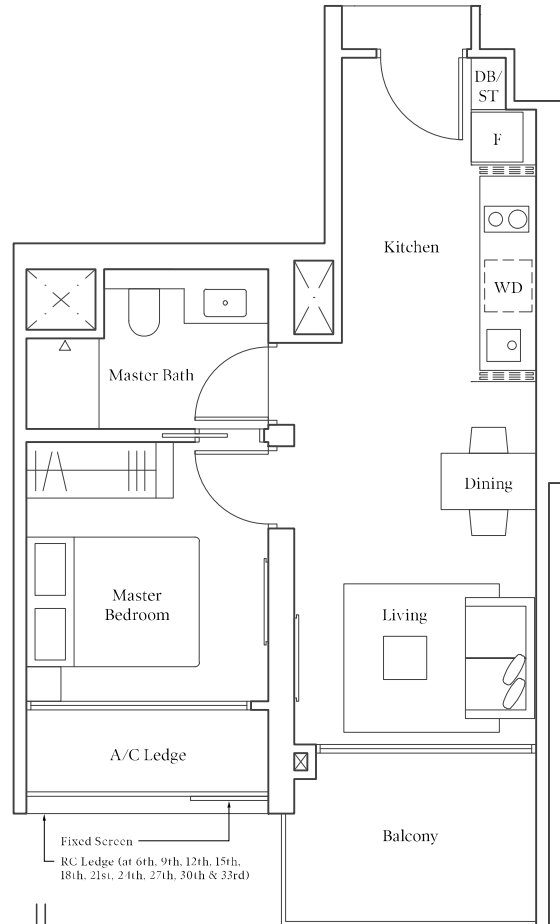
*Mirror
#03-44

Note: Area includes A/C ledge, balcony, pes, private roof terrace and void (where applicable). RC ledge is not part of strata area. The above plans and illustrations are subject to changes as maybe required by the relevant authorities. Areas are estimates only and are subject to final survey. The balcony, pes, and private roof terrace shall not be enclosed unless with the approved screen. For an illustration of the approved balcony screen, please refer to the diagram annexed hereto as "Annexure I".

I-BEDROOM

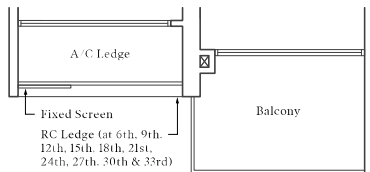
Type A2 | 49 sqm | 527 sqft

#04-29 to #05-29	*Mirror
#09-29 to #11-29	#04-39 to #05-39
#15-29 to #17-29	#09-39 to #11-39
#21-29 to #23-29	#15-39 to #17-39
#27-29 to #29-29	#21-39 to #23-39
#33-29 to #35-29	#27-39 to #29-39
	#33-39 to #35-39



#03-29

*Mirror
#03-39



#06-29 to #08-29
#12-29 to #14-29
#18-29
#20-29
#24-29 to #26-29
#30-29 to #32-29

*Mirror
#06-39 to #08-39
#12-39 to #14-39
#18-39
#20-39
#24-39 to #26-39
#30-39 to #32-39

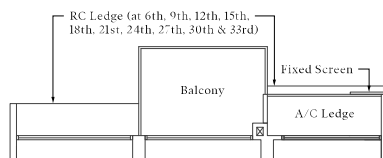
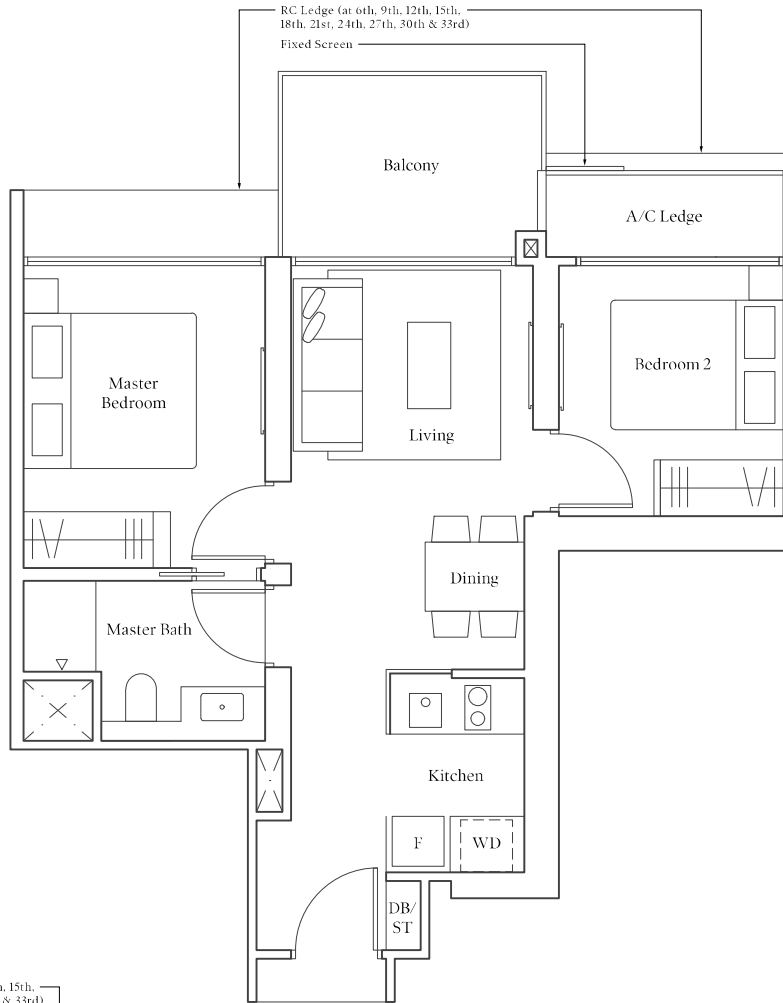


Note: Area includes A/C ledge, balcony, pes, private roof terrace and void (where applicable). RC ledge is not part of strata area. The above plans and illustrations are subject to changes as maybe required by the relevant authorities. Areas are estimates only and are subject to final survey. The balcony, pes, and private roof terrace shall not be enclosed unless with the approved screen. For an illustration of the approved balcony screen, please refer to the diagram annexed hereto as "Annexure I".

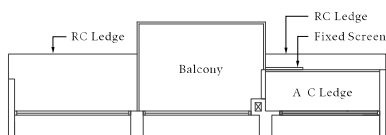
2-BEDROOM

● Type B1 | 61 sqm | 657 sqft

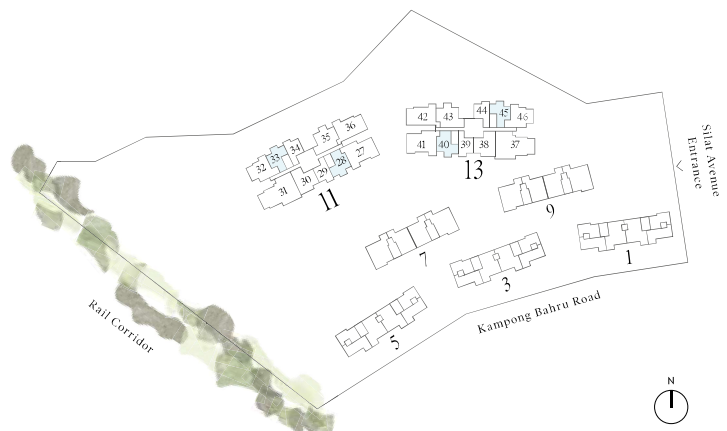
#04-33 to #05-33	*Mirror
#09-33 to #11-33	#04-45 to #05-45
#15-33 to #17-33	#09-45 to #11-45
#21-33 to #23-33	#15-45 to #17-45
#27-33 to #29-33	#21-45 to #23-45
#33-33 to #35-33	#27-45 to #29-45
	#33-45 to #35-45



#06-33 to #08-33	*Mirror
#12-33 to #14-33	#06-45 to #08-45
#18-33	#12-45 to #14-45
#20-33	#18-45
#24-33 to #26-33	#20-45
#30-33 to #32-33	#24-45 to #26-45
	#30-45 to #32-45



#03-33	*Mirror
	#03-45

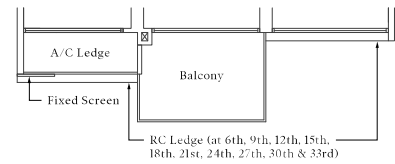
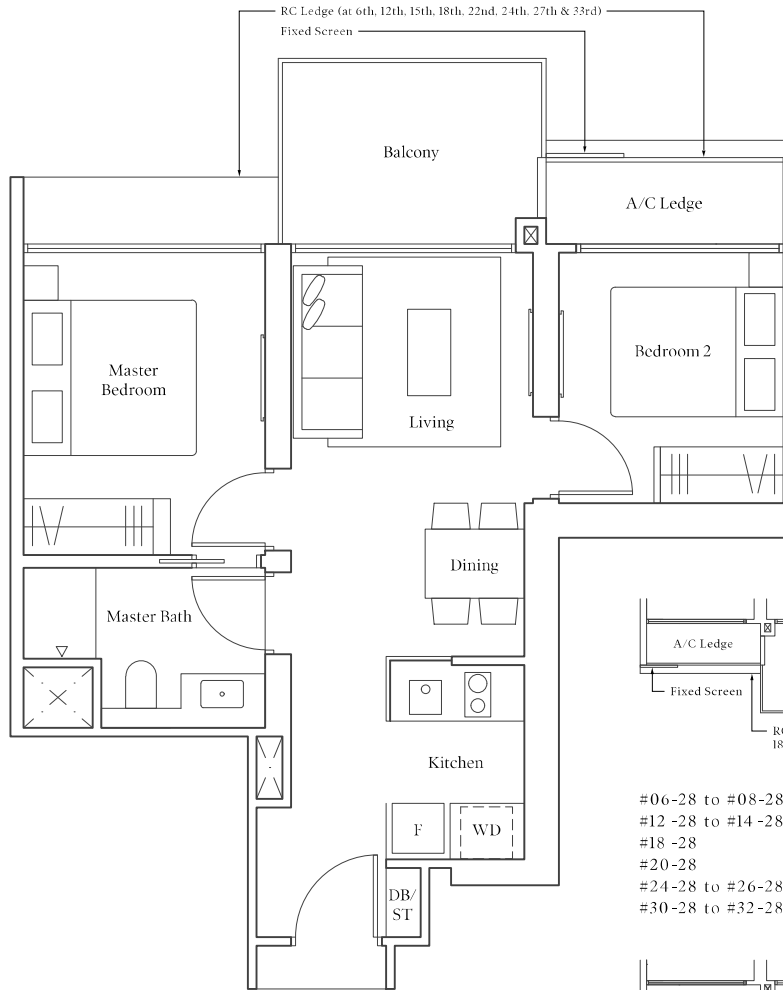


Note: Area includes A/C ledge, balcony, pes, private roof terrace and void (where applicable). RC ledge is not part of strata area. The above plans and illustrations are subject to changes as maybe required by the relevant authorities. Areas are estimates only and are subject to final survey. The balcony, pes, and private roof terrace shall not be enclosed unless with the approved screen. For an illustration of the approved balcony screen, please refer to the diagram annexed hereto as "Annexure I".

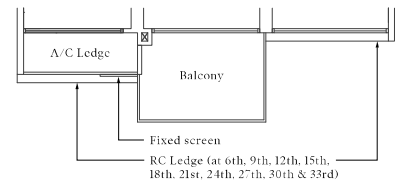
2-BEDROOM

● Type B1 | 61 sqm | 657 sqft

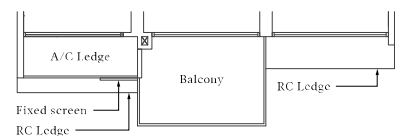
#04-33 to #05-33	*Mirror
#09-33 to #11-33	#04-45 to #05-45
#15-33 to #17-33	#09-45 to #11-45
#21-33 to #23-33	#15-45 to #17-45
#27-33 to #29-33	#21-45 to #23-45
#33-33 to #35-33	#27-45 to #29-45
	#33-45 to #35-45



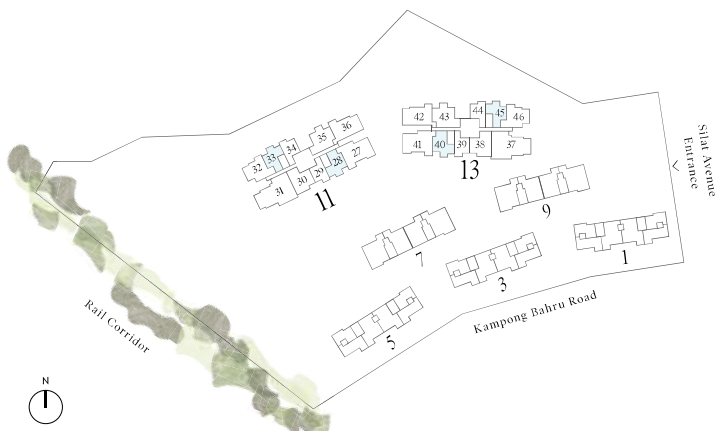
#06-28 to #08-28	*Mirror
#12-28 to #14-28	#06-40 to #08-40
#18-28	#12-40 to #14-40
#20-28	#18-40
#24-28 to #26-28	#20-40
#30-28 to #32-28	#24-40 to #26-40
	#30-40 to #32-40



#04-28 to #05-28	*Mirror
#09-28 to #11-28	#04-40 to #05-40
#15-28 to #17-28	#09-40 to #11-40
#21-28 to #23-28	#15-40 to #17-40
#27-28 to #29-28	#21-40 to #23-40
#33-28 to #35-28	#27-40 to #29-40
	#33-40 to #35-40



#03-28	*Mirror
	#03-40

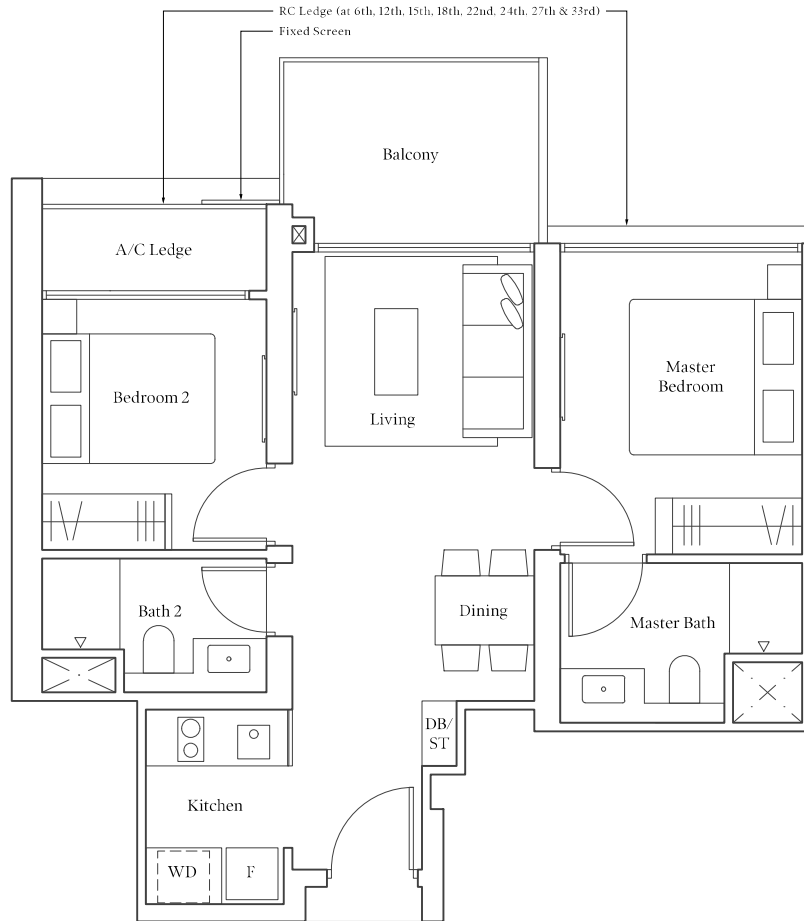


Note: Area includes A/C ledge, balcony, pes, private roof terrace and void (where applicable). RC ledge is not part of strata area. The above plans and illustrations are subject to changes as maybe required by the relevant authorities. Areas are estimates only and are subject to final survey. The balcony, pes, and private roof terrace shall not be enclosed unless with the approved screen. For an illustration of the approved balcony screen, please refer to the diagram annexed hereto as 'Annexure I'.

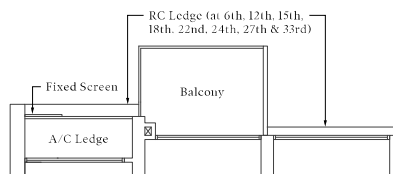
2-BEDROOM PREMIUM

Type BP1 | 64 sqm | 689 sqft

#04-35 to #05-35	*Mirror
#15-35 to #17-35	#04-43 to #05-43
#22-35 to #23-35	#15-43 to #17-43
#27-35 to #29-35	#22-43 to #23-43
#33-35 to #35-35	#27-43 to #29-43
	#33-43 to #35-43



#03-35



#06-35 to #08-35	*Mirror
#12-35 to #14-35	#06-43 to #08-43
#18-35	#12-43 to #14-43
#24-35 to #26-35	#18-43
	#24-43 to #26-43

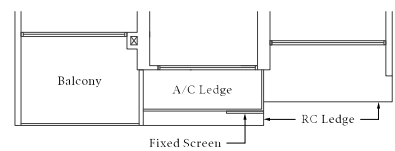
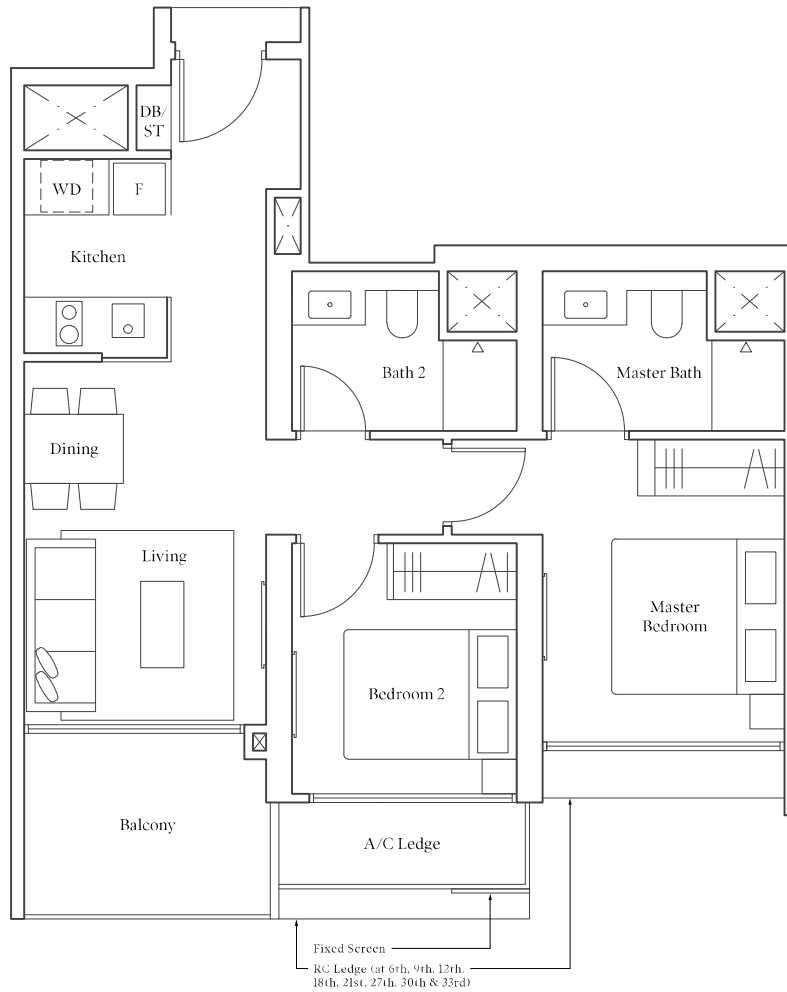


Note: Area includes A/C ledge, balcony, pes, private roof terrace and void (where applicable). RC ledge is not part of strata area. The above plans and illustrations are subject to changes as maybe required by the relevant authorities. Areas are estimates only and are subject to final survey. The balcony, pes, and private roof terrace shall not be enclosed unless with the approved screen. For an illustration of the approved balcony screen, please refer to the diagram annexed hereto as "Annexure I".

2-BEDROOM PREMIUM

● Type BP2 | 67 sqm | 721 sqft

#04-30 to #13-30	*Mirror
#17-30 to #18-30	#04-38 to #13-38
#20-30 to #23-30	#17-38 to #18-38
#27-30 to #35-30	#20-38 to #23-38
	#27-38 to #35-38



#03-30

*Mirror
#03-38

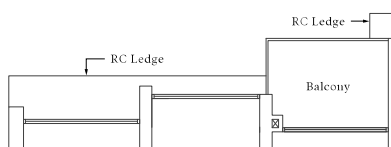
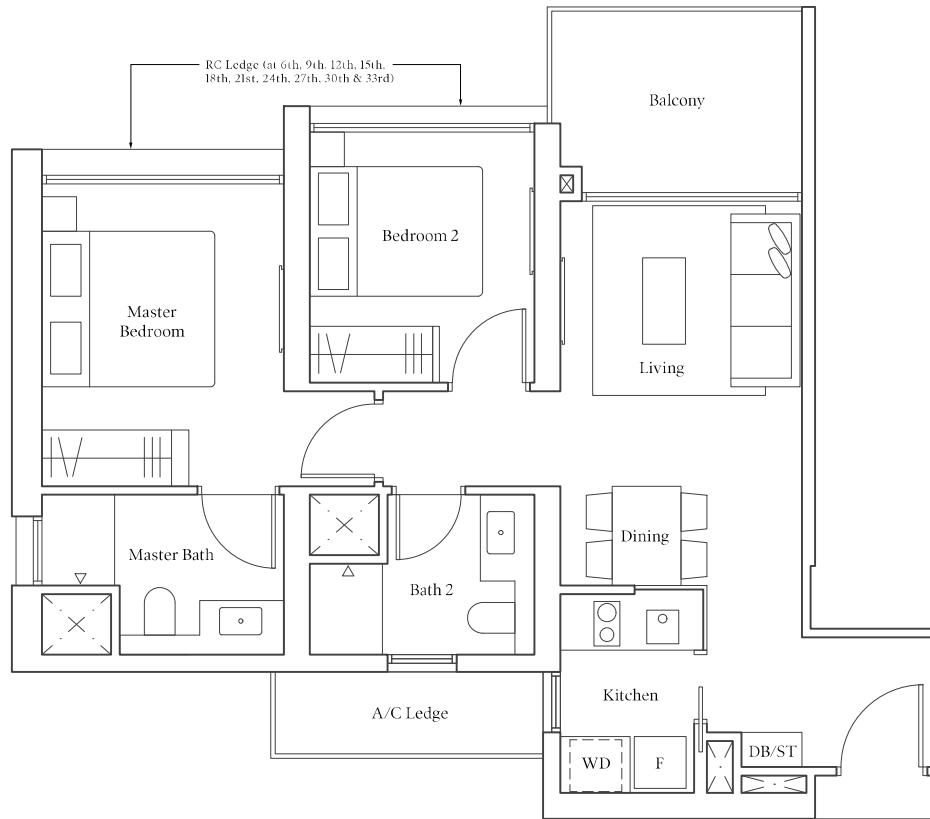
Note: Area includes A/C ledge, balcony, pes, private roof terrace and void (where applicable). RC ledge is not part of strata area. The above plans and illustrations are subject to changes as maybe required by the relevant authorities. Areas are estimates only and are subject to final survey. The balcony, pes, and private roof terrace shall not be enclosed unless with the approved screen. For an illustration of the approved balcony screen, please refer to the diagram annexed hereto as "Annexure I".

2-BEDROOM PREMIUM

Type BP3 | 68 sqm | 732 sqft

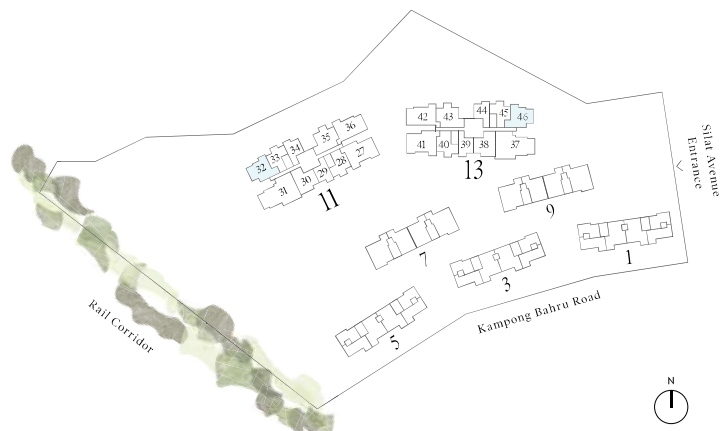
#04-32 to #18-32
#20-32 to #35-32

*Mirror
#04-46 to #18-46
#20-46 to #35-46



#03-32

*Mirror
#03-46



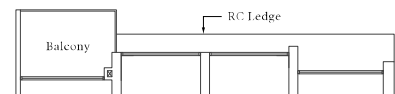
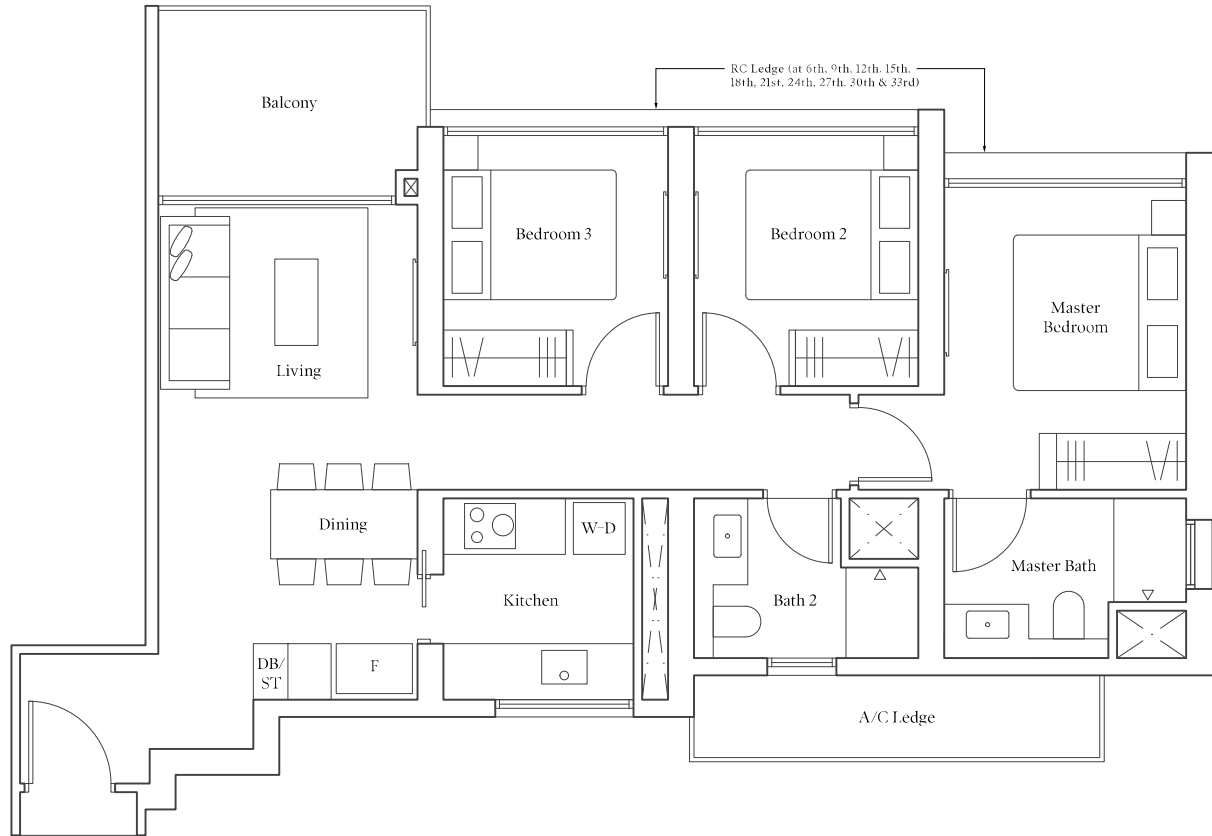
Note: Area includes A/C ledge, balcony, pes, private roof terrace and void (where applicable). RC ledge is not part of strata area. The above plans and illustrations are subject to changes as maybe required by the relevant authorities. Areas are estimates only and are subject to final survey. The balcony, pes, and private roof terrace shall not be enclosed unless with the approved screen. For an illustration of the approved balcony screen, please refer to the diagram annexed hereto as "Annexure I".

3-BEDROOM

Type C1 | 88 sqm | 947 sqft

#04-36 to #18-36
#20-36 to #35-36

*Mirror
#04-42 to #18-42
#20-42 to #35-42



#03-36

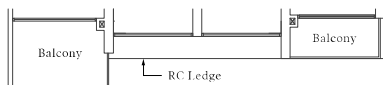
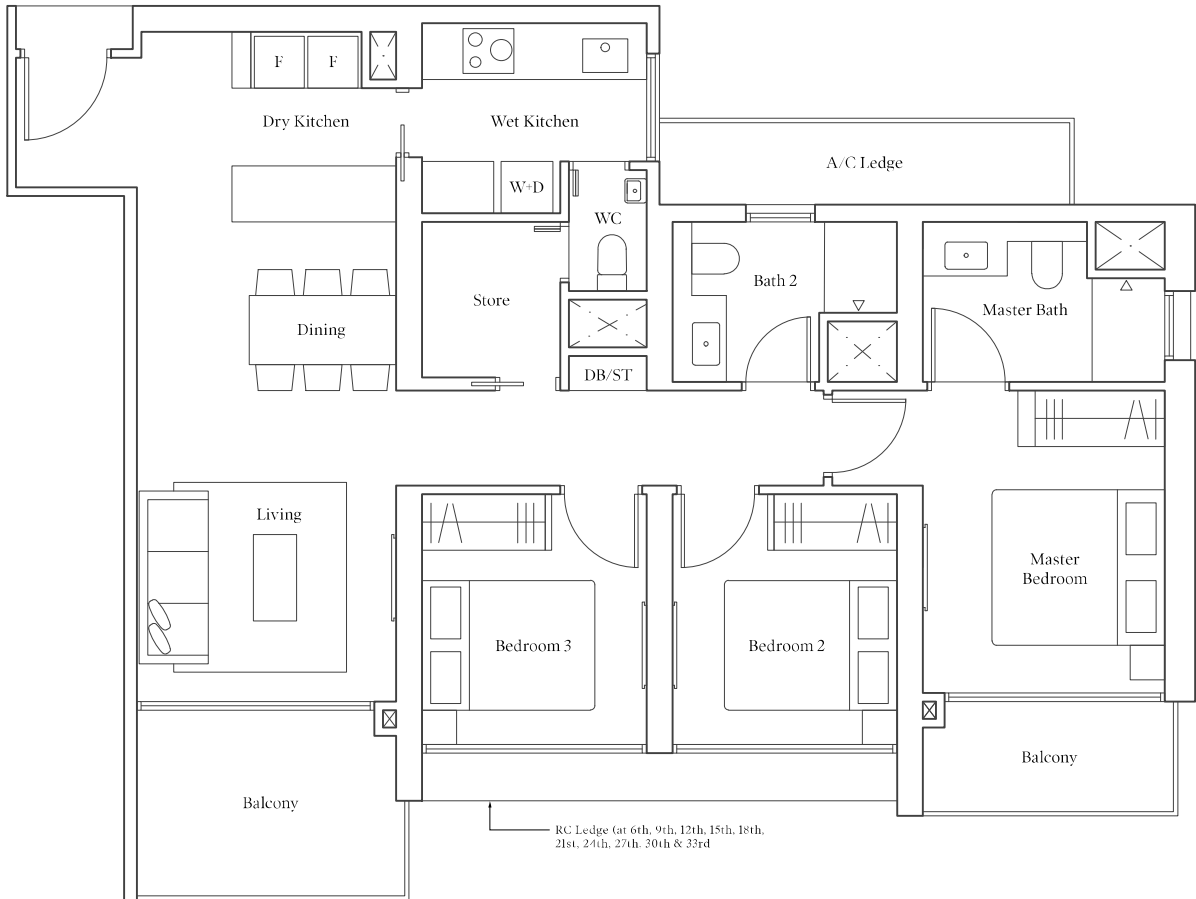
Note: Area includes A/C ledge, balcony, pes, private roof terrace and void (where applicable). RC ledge is not part of strata area. The above plans and illustrations are subject to changes as maybe required by the relevant authorities. Areas are estimates only and are subject to final survey. The balcony, pes, and private roof terrace shall not be enclosed unless with the approved screen. For an illustration of the approved balcony screen, please refer to the diagram annexed hereto as "Annexure I".

3-BEDROOM PREMIUM

Type CP1 | 103 sqm | 1109 sqft

#04-27 to #18-27
#20-27 to #35-27

*Mirror
#04-41 to #18-41
#20-41 to #35-41



#03-27

*Mirror
#03-41



Note: Area includes A/C ledge, balcony, pes, private roof terrace and void (where applicable). RC ledge is not part of strata area. The above plans and illustrations are subject to changes as maybe required by the relevant authorities. Areas are estimates only and are subject to final survey. The balcony, pes, and private roof terrace shall not be enclosed unless with the approved screen. For an illustration of the approved balcony screen, please refer to the diagram annexed hereto as "Annexure I".

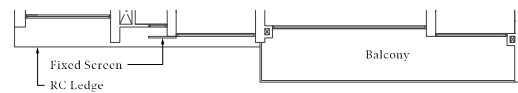
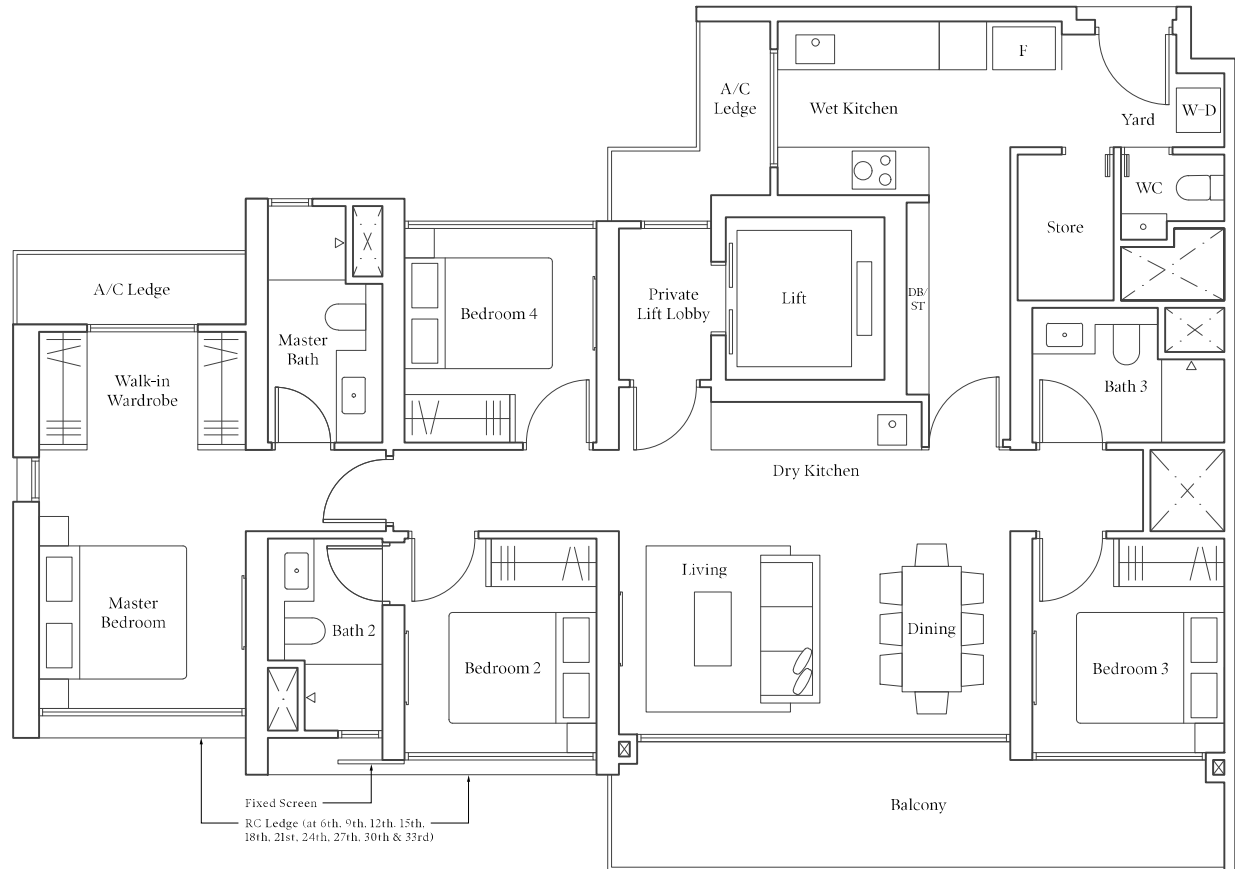
4-BEDROOM PREMIUM

Type DP1 | 139 sqm | 1496 sqft

#04-31 to #05-31
#09-31 to #11-31
#15-31 to #17-31
#21-31 to #23-31
#27-31 to #29-31
#33-31 to #35-31

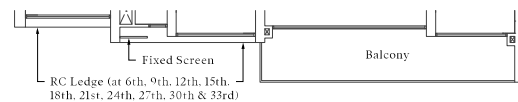
*Mirror

#04-37 to #05-37
#09-37 to #11-37
#15-37 to #17-37
#21-37 to #23-37
#27-37 to #29-37
#33-37 to #35-37



#03-31

*Mirror
#03-37



#06-31 to #08-31
#12-31 to #14-31
#18-31
#20-31
#24-31 to #26-31
#30-31 to #32-31

*Mirror

#06-37 to #08-37
#12-37 to #14-37
#18-37
#20-37
#24-37 to #26-37
#30-37 to #32-37

Note: Area includes A/C ledge, balcony, pes, private roof terrace and void (where applicable). RC ledge is not part of strata area. The above plans and illustrations are subject to changes as maybe required by the relevant authorities. Areas are estimates only and are subject to final survey. The balcony, pes, and private roof terrace shall not be enclosed unless with the approved screen. For an illustration of the approved balcony screen, please refer to the diagram annexed hereto as 'Annexure I'.

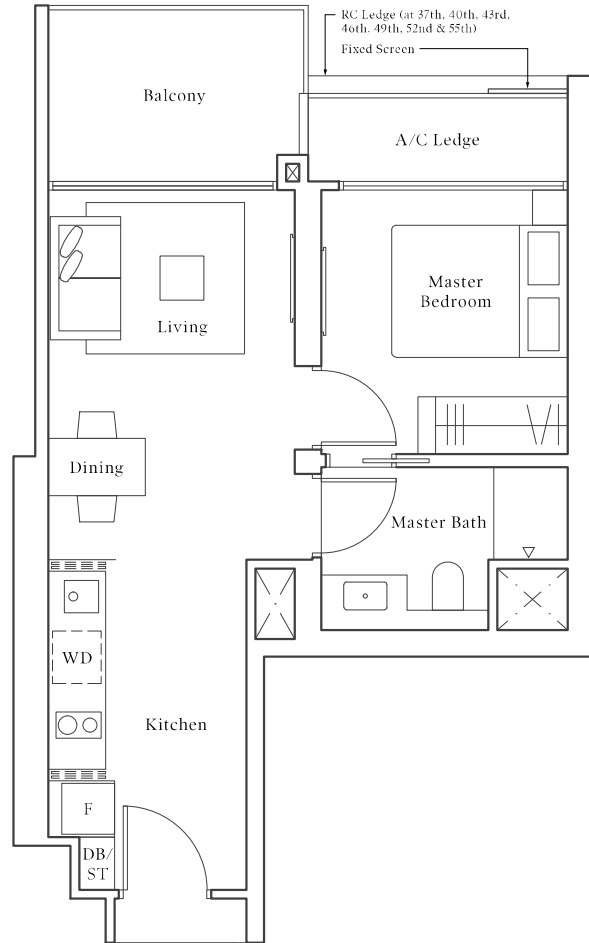
I-BEDROOM

Type A1 | 49 sqm | 527 sqft

#37-34 to #56-34

*Mirror

#37-44 to #56-44

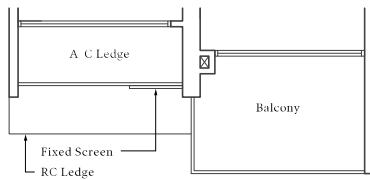
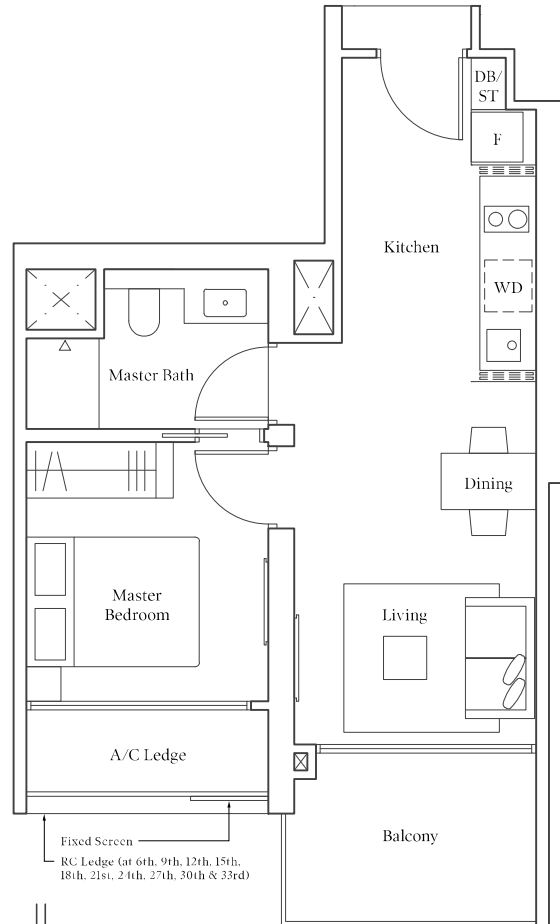


Note: Area includes A/C ledge, balcony, pes, private roof terrace and void (where applicable). RC ledge is not part of strata area. The above plans and illustrations are subject to changes as may be required by the relevant authorities. Areas are estimates only and are subject to final survey. The balcony, pes, and private roof terrace shall not be enclosed unless with the approved screen. For an illustration of the approved balcony screen, please refer to the diagram annexed hereto as 'Annexure I'.

I-BEDROOM

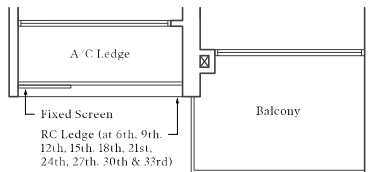
Type A2 | 49 sqm | 527 sqft

#04-29 to #05-29	*Mirror
#09-29 to #11-29	#04-39 to #05-39
#15-29 to #17-29	#09-39 to #11-39
#21-29 to #23-29	#15-39 to #17-39
#27-29 to #29-29	#21-39 to #23-39
#33-29 to #35-29	#27-39 to #29-39
	#33-39 to #35-39



#03-29

*Mirror
#03-39



#06-29 to #08-29	*Mirror
#12-29 to #14-29	#06-39 to #08-39
#18-29	#12-39 to #14-39
#20-29	#18-39
#24-29 to #26-29	#20-39
#30-29 to #32-29	#24-39 to #26-39
	#30-39 to #32-39



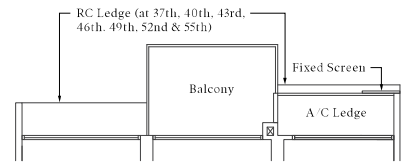
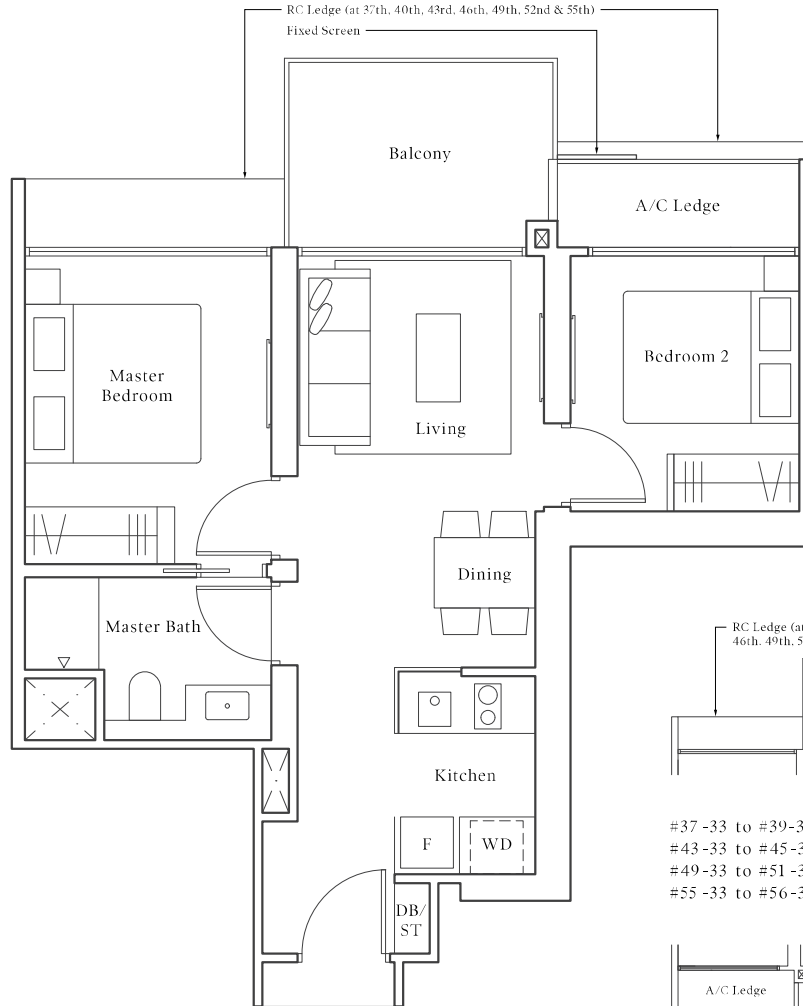
Note: Area includes A/C ledge, balcony, pes, private roof terrace and void (where applicable). RC ledge is not part of strata area. The above plans and illustrations are subject to changes as maybe required by the relevant authorities. Areas are estimates only and are subject to final survey. The balcony, pes, and private roof terrace shall not be enclosed unless with the approved screen. For an illustration of the approved balcony screen, please refer to the diagram annexed hereto as "Annexure I".



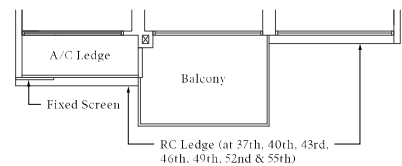
2-BEDROOM

● Type B1 | 61 sqm | 657 sqft

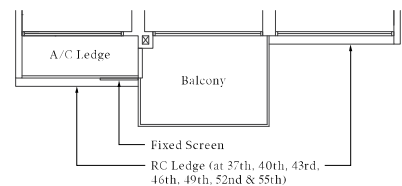
#40-33 to #42-33 *Mirror
#40-45 to #42-45
#46-33 to #48-33 #46-45 to #48-45
#52-33 to #54-33 #52-45 to #54-45



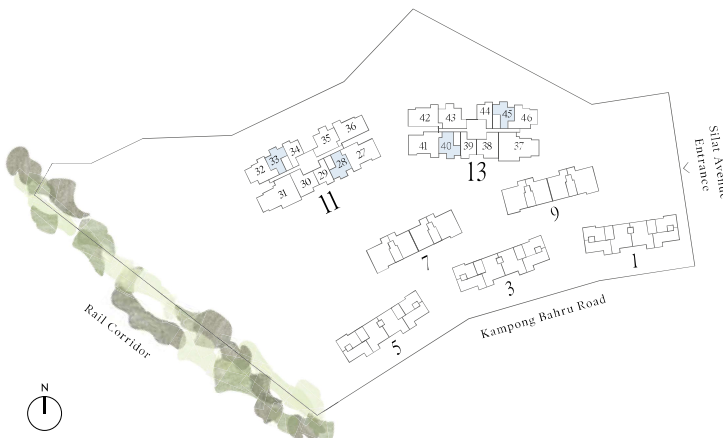
*Mirror
#37-33 to #39-33 #37-45 to #39-45
#43-33 to #45-33 #43-45 to #45-45
#49-33 to #51-33 #49-45 to #51-45
#55-33 to #56-33 #55-45 to #56-45



*Mirror
#37-28 to #39-28 #37-40 to #39-40
#43-28 to #45-28 #43-40 to #45-40
#49-28 to #51-28 #49-40 to #51-40
#55-28 to #56-28 #55-40 to #56-40



*Mirror
#40-28 to #42-28 #40-40 to #42-40
#46-28 to #48-28 #46-40 to #48-40
#52-28 to #54-28 #52-40 to #54-40



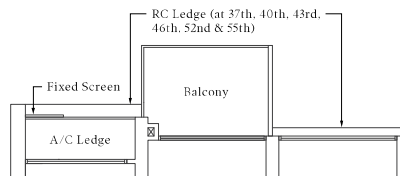
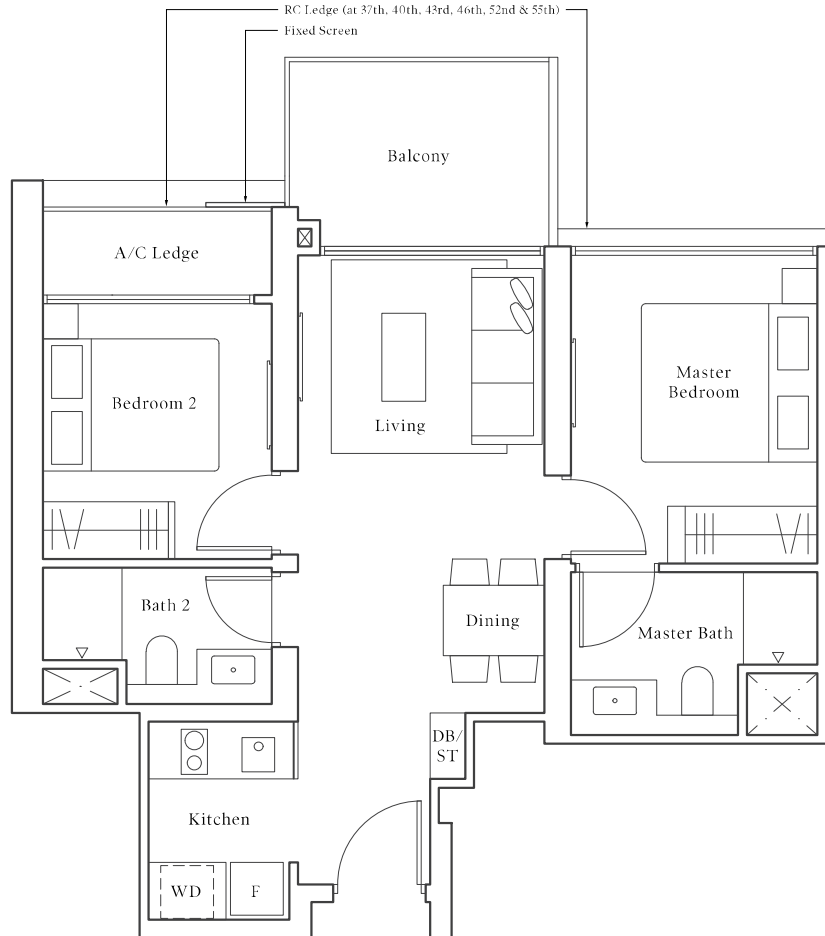
Note: Area includes A/C ledge, balcony, pes, private roof terrace and void (where applicable). RC ledge is not part of strata area. The above plans and illustrations are subject to changes as may be required by the relevant authorities. Areas are estimates only and are subject to final survey. The balcony, pes, and private roof terrace shall not be enclosed unless with the approved screen. For an illustration of the approved balcony screen, please refer to the diagram annexed hereto as 'Annexure I'.

2-BEDROOM PREMIUM

● Type BP1 | 64 sqm | 689 sqft

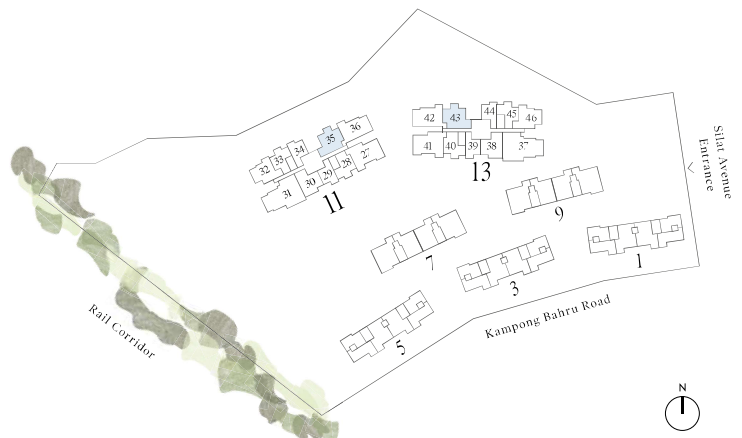
#40-35 to #42-35
#46-35 to #48-35
#52-35 to #54-35

*Mirror
#40-43 to #42-43
#46-43 to #48-43
#52-43 to #54-43



#37-35 to #39-35
#43-35 to #45-35
#55-35 to #56-35

*Mirror
#37-43 to #39-43
#43-43 to #45-43
#55-43 to #56-43



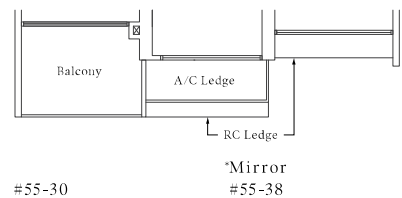
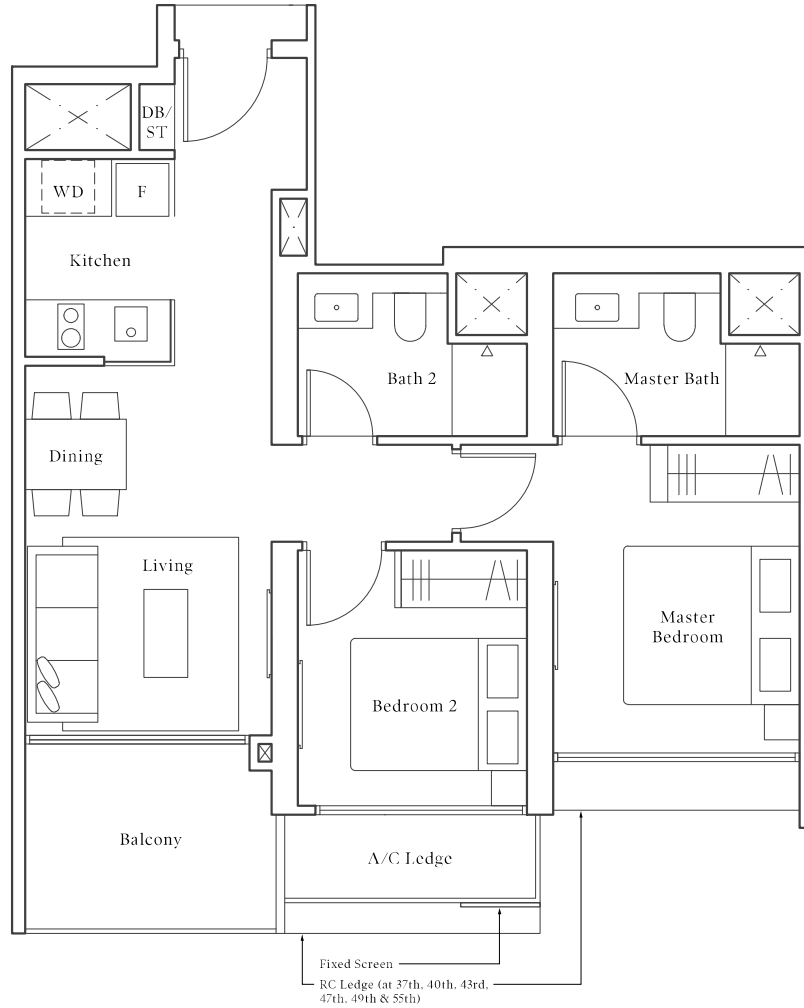
Note: Area includes A/C ledge, balcony, pes, private roof terrace and void (where applicable). RC ledge is not part of strata area. The above plans and illustrations are subject to changes as may be required by the relevant authorities. Areas are estimates only and are subject to final survey. The balcony, pes, and private roof terrace shall not be enclosed unless with the approved screen. For an illustration of the approved balcony screen, please refer to the diagram annexed hereto as 'Annexure I'.

2-BEDROOM PREMIUM

● Type BP2 | 67 sqm | 721 sqft

#37-30 to #43-30
#47-30 to #51-30

*Mirror
#37-38 to #43-38
#47-38 to #51-38



Note: Area includes A/C ledge, balcony, pes, private roof terrace and void (where applicable). RC ledge is not part of strata area. The above plans and illustrations are subject to changes as may be required by the relevant authorities. Areas are estimates only and are subject to final survey. The balcony, pes, and private roof terrace shall not be enclosed unless with the approved screen. For an illustration of the approved balcony screen, please refer to the diagram annexed hereto as 'Annexure I'.

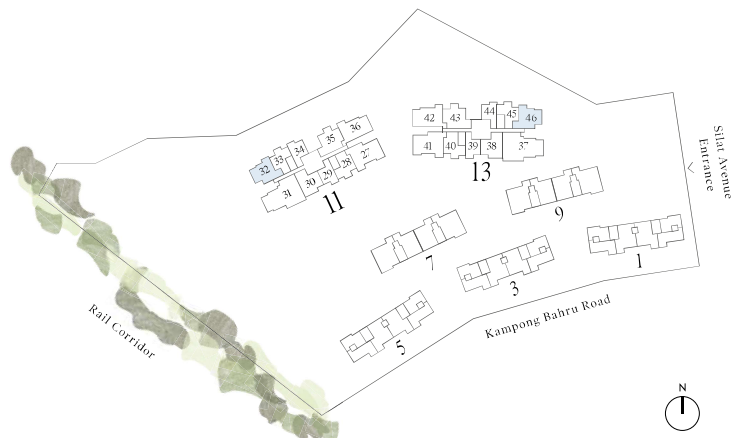
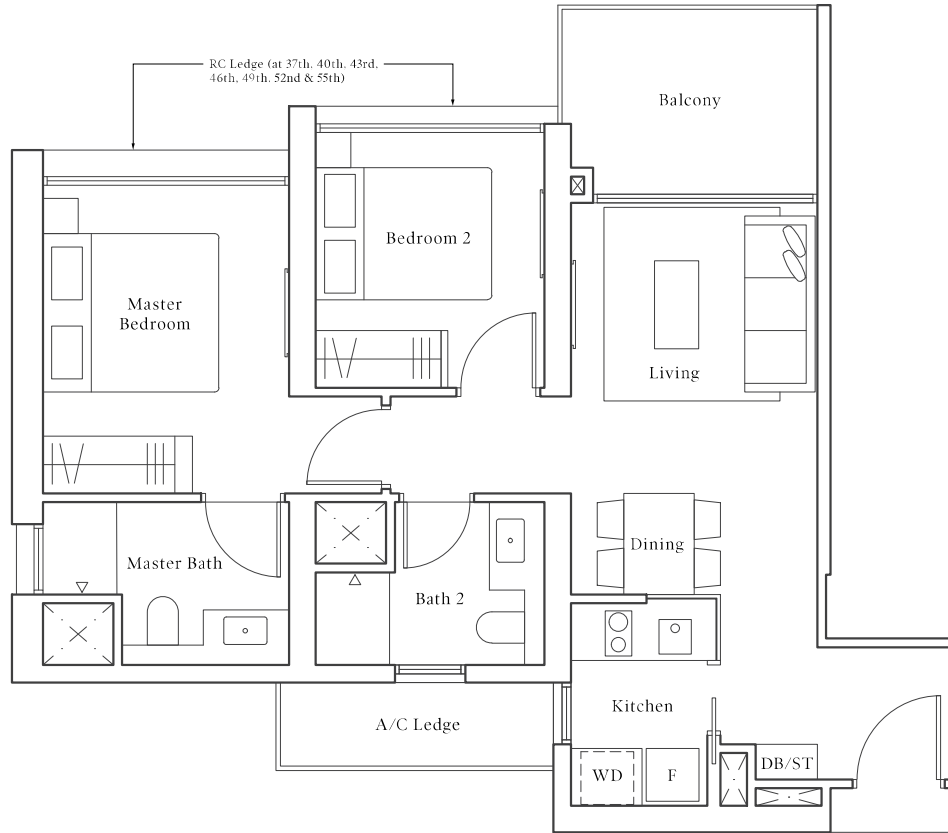
2-BEDROOM PREMIUM

● Type BP3 | 68 sqm | 732 sqft

#37-32 to #55-32

*Mirror

#37-46 to #55-46

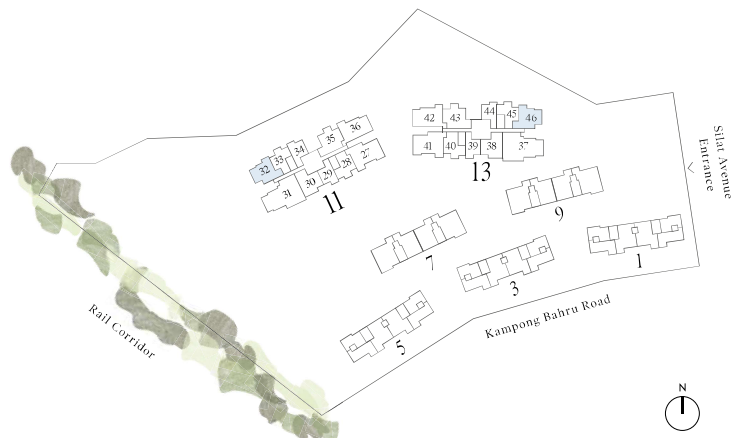
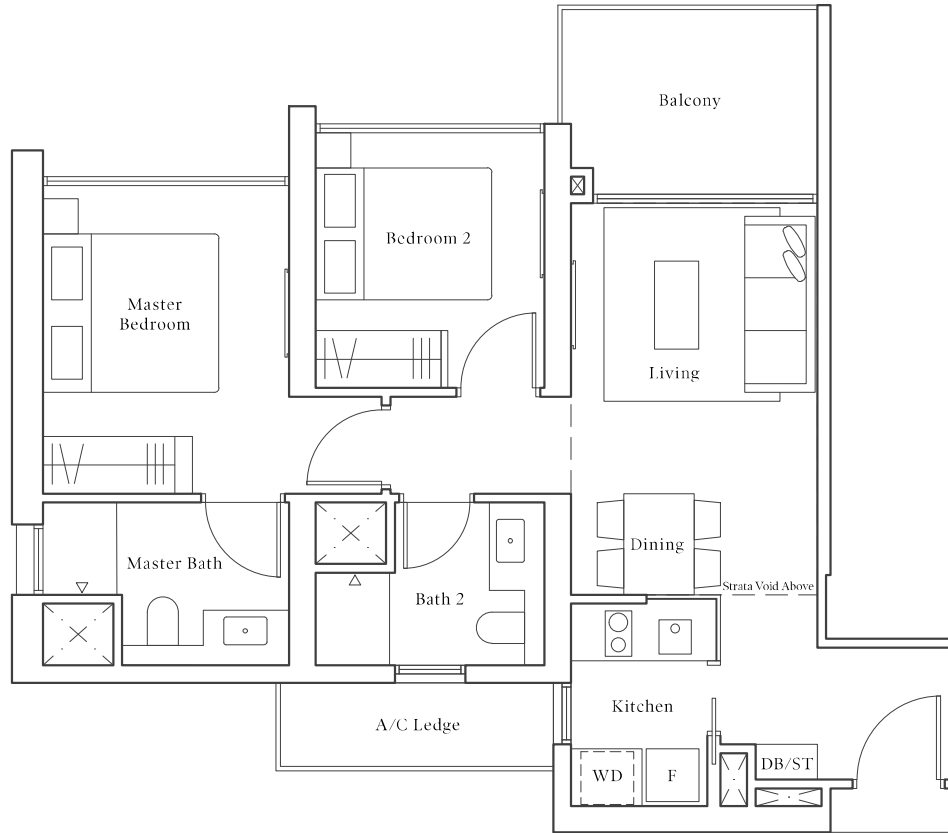


2-BEDROOM PREMIUM

Type BP3-PH | 82 sqm | 883 sqft

#56-32

*Mirror
#56-46



Note: Area includes A/C ledge, balcony, pes, private roof terrace and void (where applicable). RC ledge is not part of strata area. The above plans and illustrations are subject to changes as may be required by the relevant authorities. Areas are estimates only and are subject to final survey. The balcony, pes, and private roof terrace shall not be enclosed unless with the approved screen. For an illustration of the approved balcony screen, please refer to the diagram annexed hereto as 'Annexure I'.

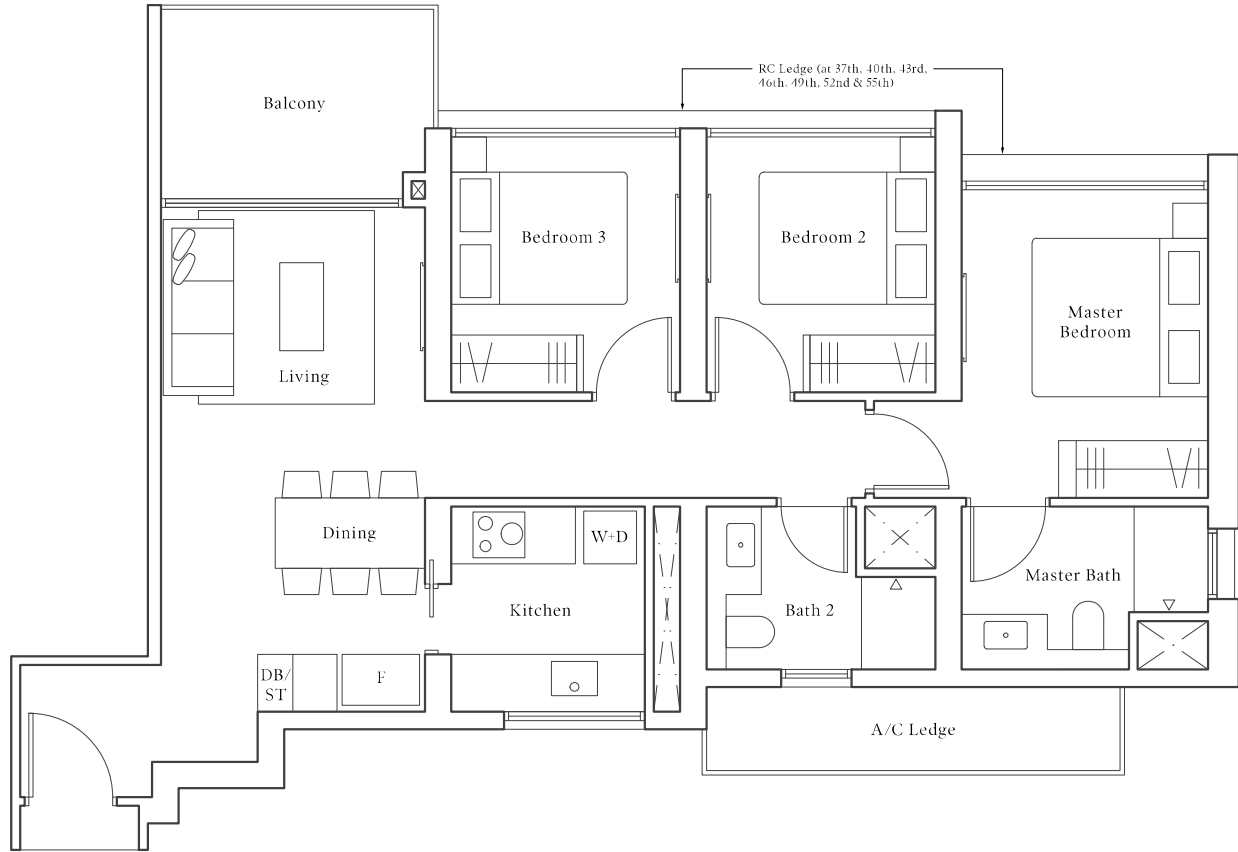
3-BEDROOM

● Type C1 | 88 sqm | 947 sqft

#37-36 to #55-36

*Mirror

#37-42 to #55-42



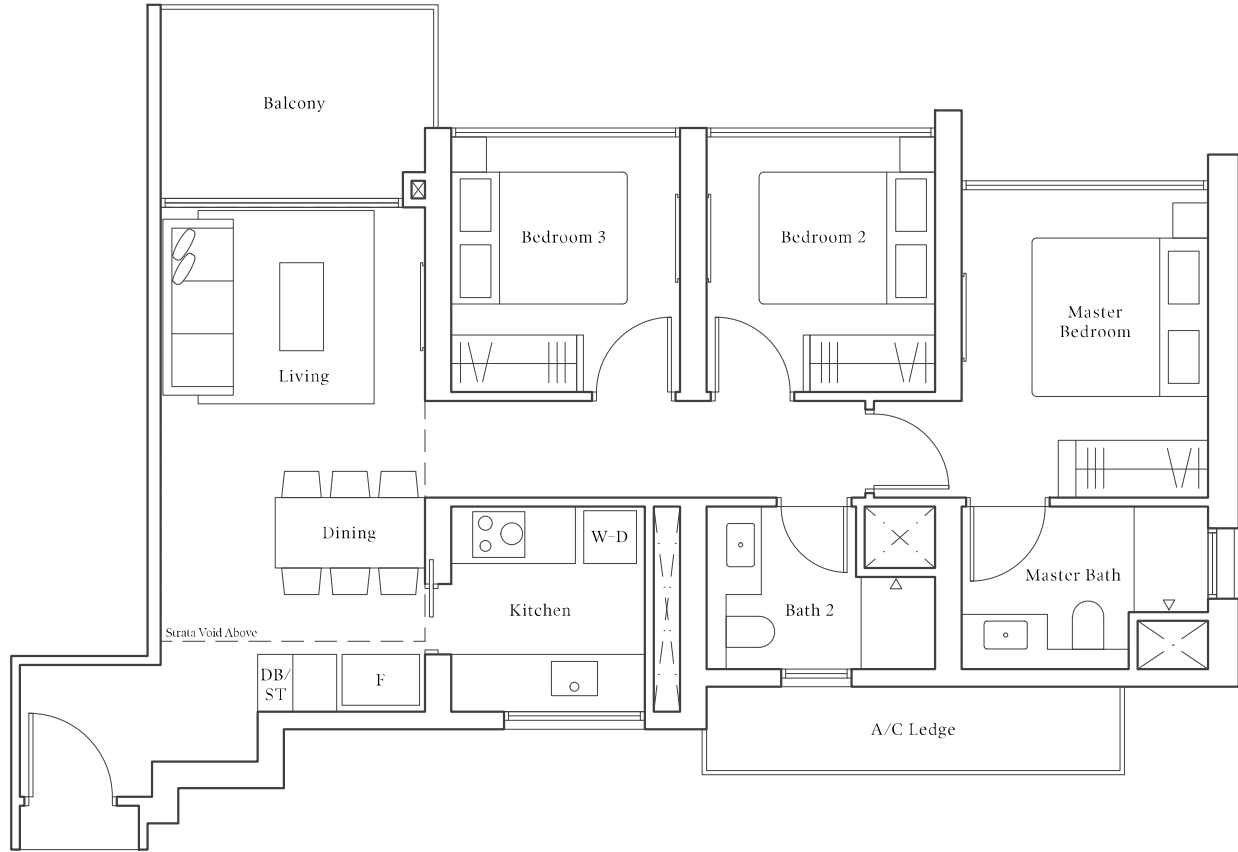
Note: Area includes A/C ledge, balcony, pes, private roof terrace and void (where applicable). RC ledge is not part of strata area. The above plans and illustrations are subject to changes as may be required by the relevant authorities. Areas are estimates only and are subject to final survey. The balcony, pes, and private roof terrace shall not be enclosed unless with the approved screen. For an illustration of the approved balcony screen, please refer to the diagram annexed hereto as 'Annexure I'.

3-BEDROOM

● Type C1-PH | 104 sqm | 1120 sqft

#56-36

*Mirror
#56-42



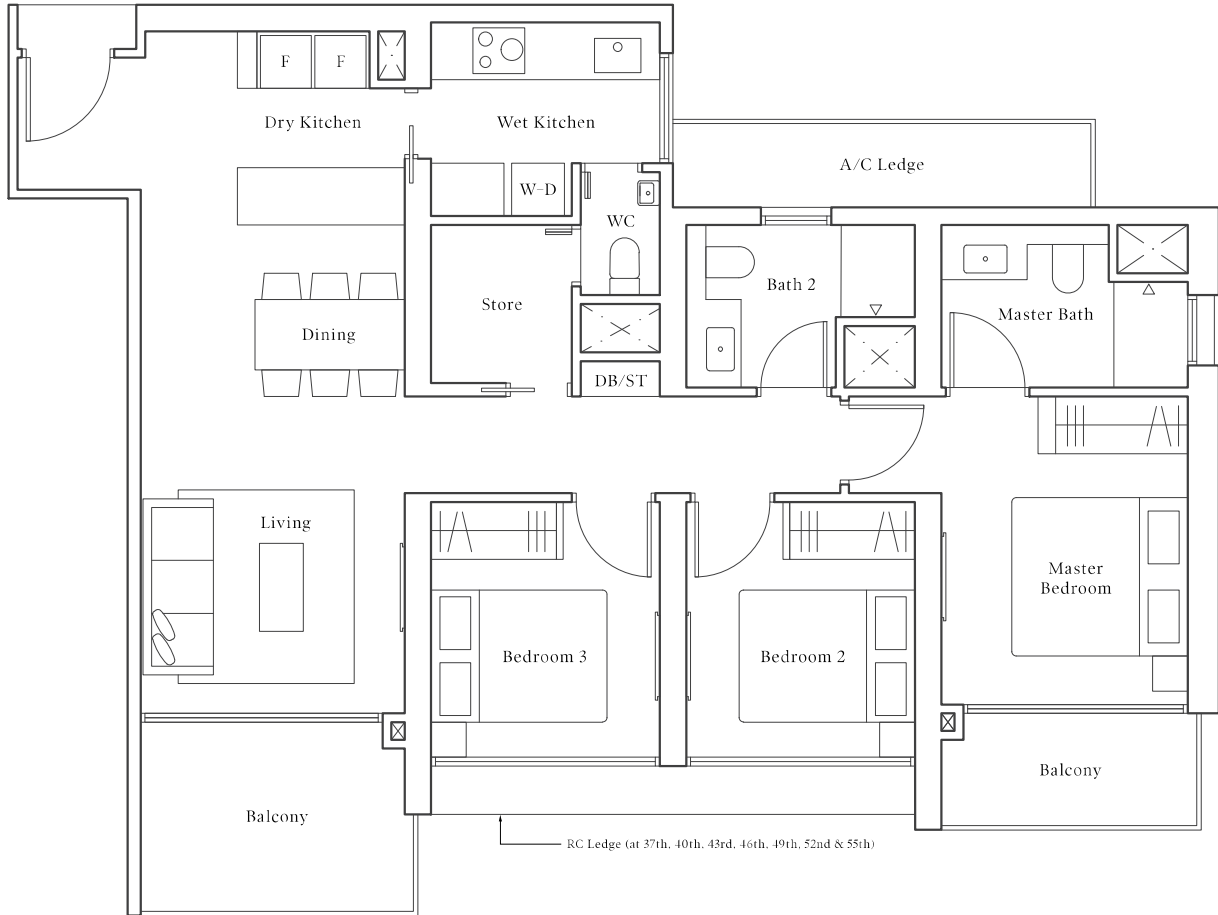
Note: Area includes A/C ledge, balcony, pes, private roof terrace and void (where applicable). RC ledge is not part of strata area. The above plans and illustrations are subject to changes as may be required by the relevant authorities. Areas are estimates only and are subject to final survey. The balcony, pes, and private roof terrace shall not be enclosed unless with the approved screen. For an illustration of the approved balcony screen, please refer to the diagram annexed hereto as 'Annexure I'.

3-BEDROOM PREMIUM

● Type CP1 | 103 sqm | 1109 sqft

#37-27 to #55-27

*Mirror
#37-41 to #55-41



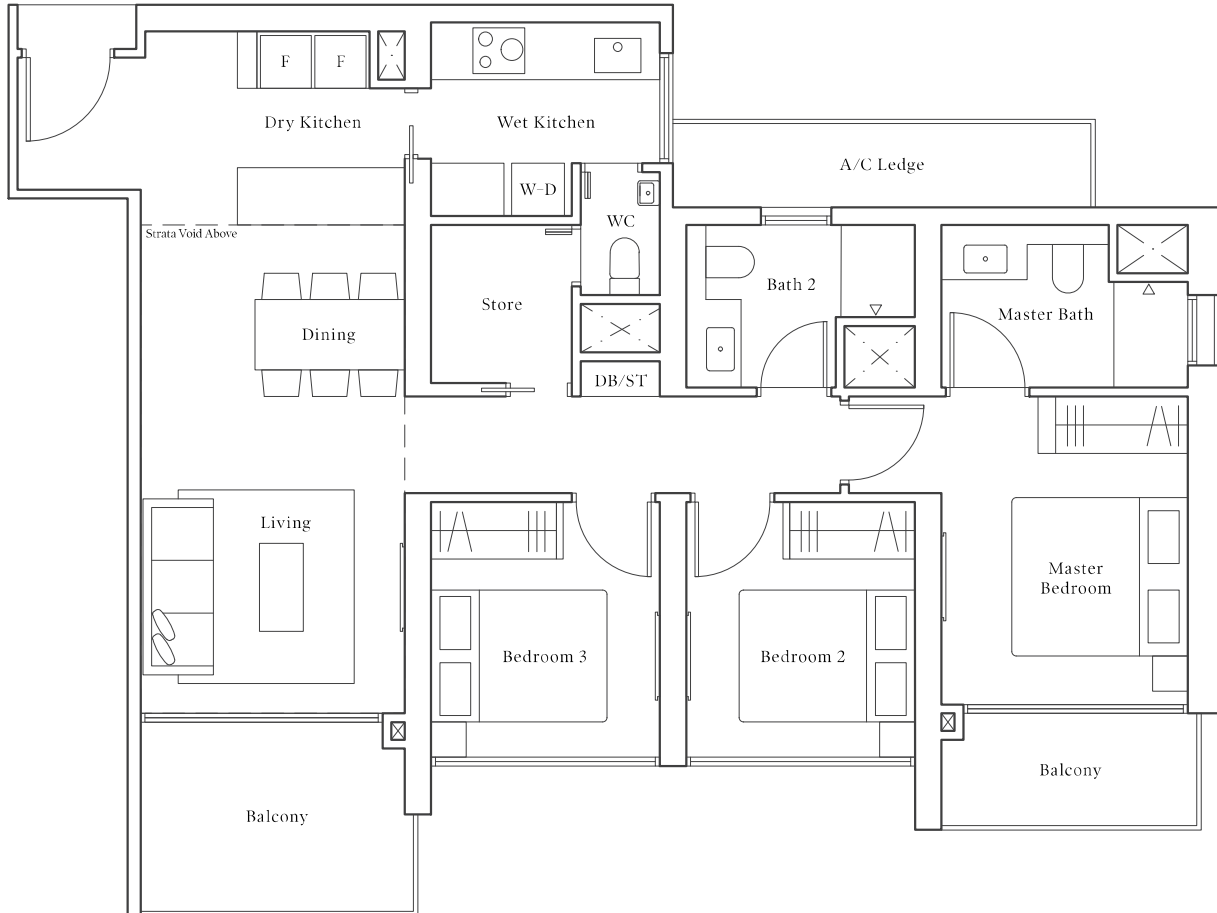
Note: Area includes A/C ledge, balcony, pes, private roof terrace and void (where applicable). RC ledge is not part of strata area. The above plans and illustrations are subject to changes as may be required by the relevant authorities. Areas are estimates only and are subject to final survey. The balcony, pes, and private roof terrace shall not be enclosed unless with the approved screen. For an illustration of the approved balcony screen, please refer to the diagram annexed hereto as 'Annexure I'.

3-BEDROOM PREMIUM

● Type CP1-PH | 121 sqm | 1302 sqft

#56-27

*Mirror
#56-41



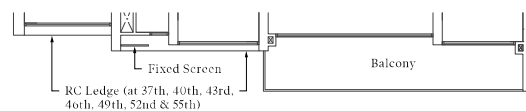
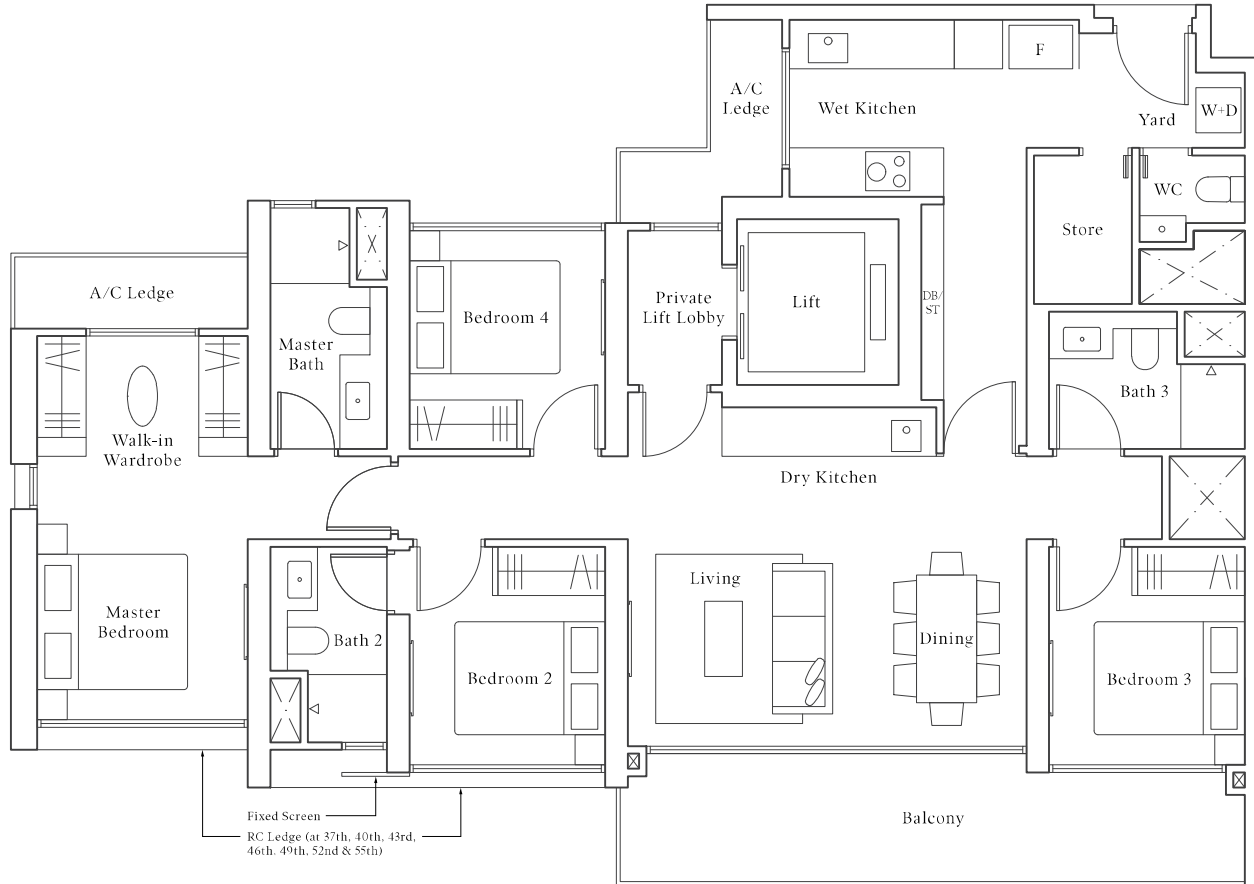
Note: Area includes A/C ledge, balcony, pes, private roof terrace and void (where applicable). RC ledge is not part of strata area. The above plans and illustrations are subject to changes as may be required by the relevant authorities. Areas are estimates only and are subject to final survey. The balcony, pes, and private roof terrace shall not be enclosed unless with the approved screen. For an illustration of the approved balcony screen, please refer to the diagram annexed hereto as 'Annexure I'.

4-BEDROOM PREMIUM

Type DP1 | 139 sqm | 1496 sqft

#40-31 to #42-31
#46-31 to #48-31
#52-31 to #54-31

*Mirror
#40-37 to #42-37
#46-37 to #48-37
#52-37 to #54-37



#37-31 to #39-31
#43-31 to #45-31
#49-31 to #51-31
#55-31

*Mirror
#37-37 to #39-37
#43-37 to #45-37
#49-37 to #51-37
#55-37

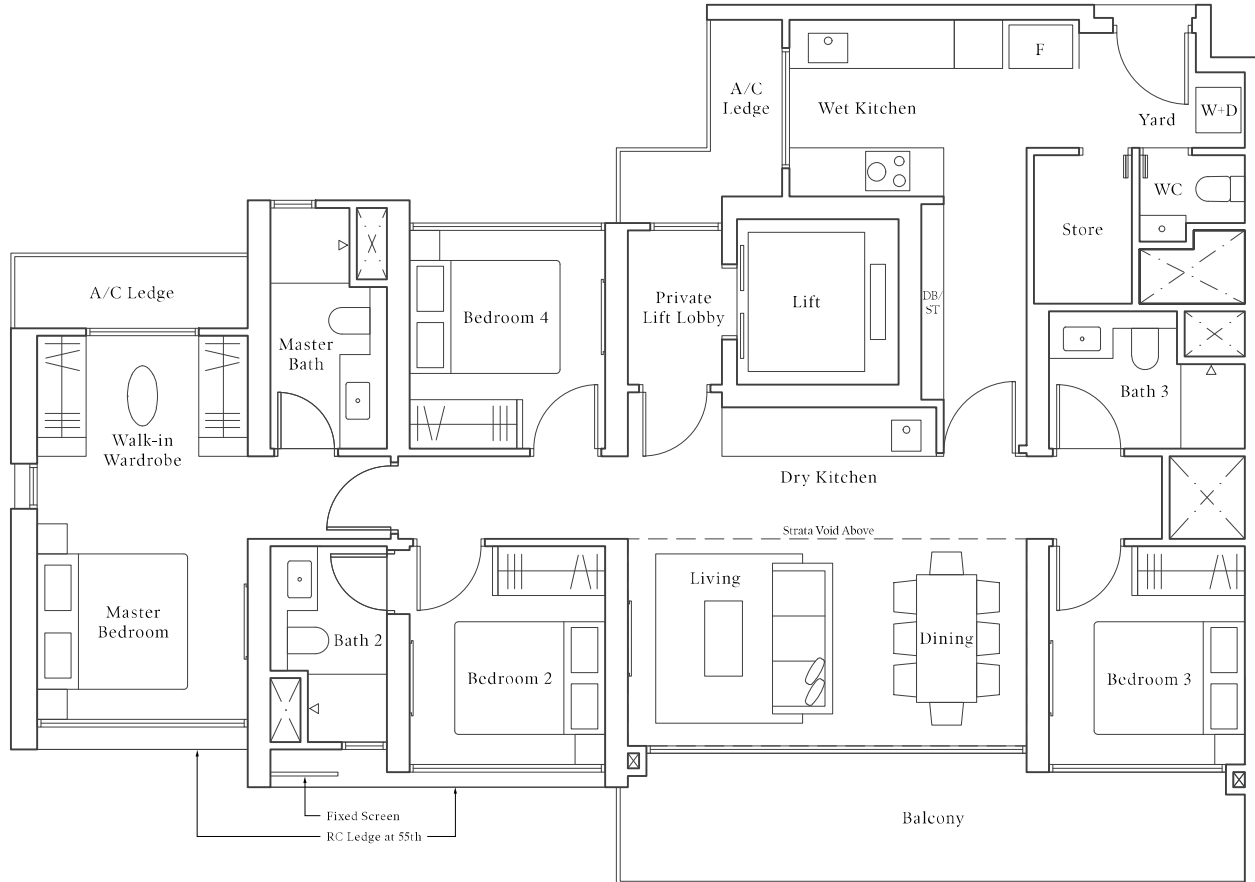
Note: Area includes A/C ledge, balcony, pes, private roof terrace and void (where applicable). RC ledge is not part of strata area. The above plans and illustrations are subject to changes as may be required by the relevant authorities. Areas are estimates only and are subject to final survey. The balcony, pes, and private roof terrace shall not be enclosed unless with the approved screen. For an illustration of the approved balcony screen, please refer to the diagram annexed hereto as 'Annexure I'.

4-BEDROOM PREMIUM

● Type DP1-PH | 155 sqm | 1668 sqft

#56-31

*Mirror
#56-37



Note: Area includes A/C ledge, balcony, pes, private roof terrace and void (where applicable). RC ledge is not part of strata area. The above plans and illustrations are subject to changes as may be required by the relevant authorities. Areas are estimates only and are subject to final survey. The balcony, pes, and private roof terrace shall not be enclosed unless with the approved screen. For an illustration of the approved balcony screen, please refer to the diagram annexed hereto as 'Annexure I'.