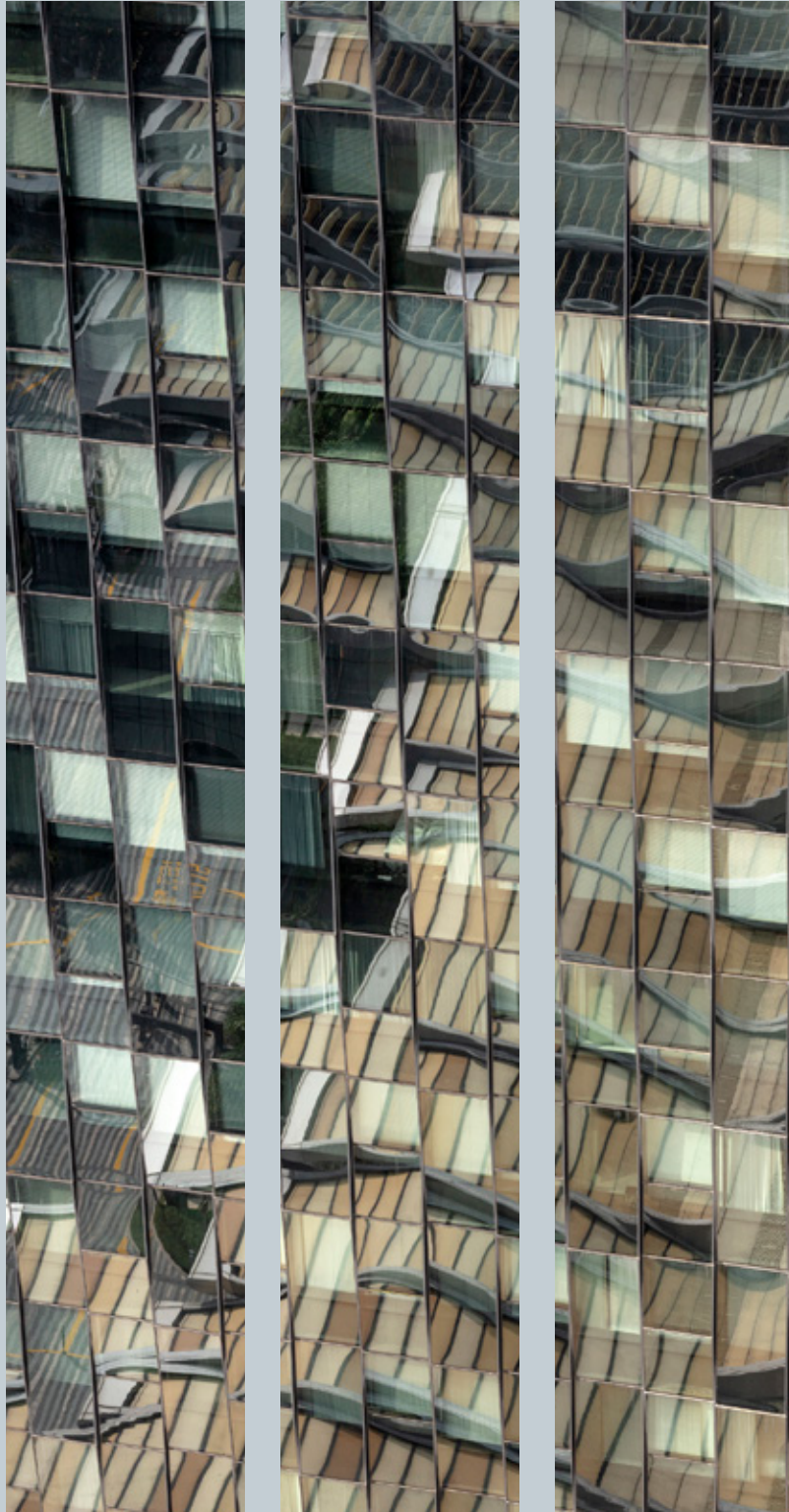


FLOOR PLANS

3 - BEDROOM



AN ABODE TO RIVAL THE HEIGHTS YOU SCALE



For illustration only

For the individual who demands absolute exclusivity, South Beach Residences is a landmark home without equal. Nestled within the iconic South Beach integrated development and perched atop the JW Marriott Singapore South Beach, this is an abode at the height of luxury.



For illustration only

LUSH SKY GARDENS

Get away from the bustle high above the city. Find retreat and recreation at the two Sky Gardens located on levels 22 and 32.



Image courtesy of JW Marriott Singapore South Beach

JW MARRIOTT SINGAPORE SOUTH BEACH

Live atop this design-led luxury hotel which boasts 634 rooms and suites; five exciting restaurants and bars; The NCO Club, an entertainment and lifestyle venue; and the signature Spa by JW.



DINING AND ENTERTAINMENT

Indulge your palate with a host of options that run the gamut from casual modern to fine dining.



Image courtesy of Madame Fan

CONSERVATION BUILDINGS

Remembering the army camp history of the South Beach site, the four restored military buildings now serve as unique lifestyle and event venues.

SOUTH BEACH TOWER

The sister tower to South Beach Residences, and a dynamic business hub featuring 34 storeys of Grade A office space.









LIVE LARGE WITH NO BOUNDARIES



Located within the Civic District, enjoy an address that places you at the heart of Singapore's historical, architectural and cultural heritage.

By car, key destinations are well within reach: 5 minutes to the Central Business District; 10 minutes to the world-famous Orchard Road shopping belt; and 15 minutes to Changi Airport.

Connecting you to the island at large, Esplanade MRT Station and City Hall MRT Interchange can be directly accessed from South Beach itself.

-  Arts & Recreation
-  Hotels
-  Shopping & Dining
-  Education
-  Churches
-  Singapore Night Race Track

WHEN EVEN LUXURY HAS BECOME COMMONPLACE, IT'S TIME TO RAISE THE BAR

With only 190 apartments, South Beach Residences is your exclusive sanctuary in the sky. Choose from two-, three- and four-bedroom suites to sprawling penthouses.

Completing your life of leisure – our Signature Residential Services*. Well versed in the finer points of hospitality, our Residential Hosts are on hand to provide seamless assistance so you can simply put your feet up. From organising a private soirée, to securing restaurant reservations or help with laundry and housekeeping, consider it done.



For illustration only

*Selected services are chargeable. Terms and conditions apply.

SITE PLAN

LEVEL 1

BEACH ROAD

BRAS BASAH ROAD

MIDDLE ROAD



NICOLL HIGHWAY

- | | | | |
|-------------------------------|---------------------------|--------------------------|--|
| South Beach Residences | South Beach Avenue | South Beach Tower | JW Marriott Singapore South Beach |
| A Residence Arrival | O Restaurants & Services | E Office Lobby | G Hotel Lobby |
| B Lift Lobby | | F Office Arrival | H Hotel Arrival |
| C Concierge | | | I NCO Club |
| | | | J Business Center |
| | | | K Grand Ballroom |



SKY GARDEN (LEVEL 22)



- | | | | |
|-----------------|----------------------------------|----------------------------------|--------------------------|
| A Swimming Pool | D Pool Deck | G Function Room with Kitchenette | J Pool Lounging Deck |
| B Jacuzzi | E Changing Rooms with Steam Room | H Residential Gym | K Outdoor Waiting Lounge |
| C Wading Pool | F Outdoor Function Area | I Outdoor Gym | |



SKY GARDEN (LEVEL 32)

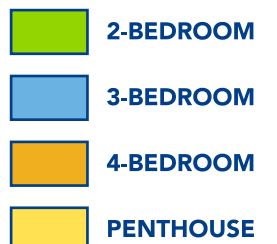
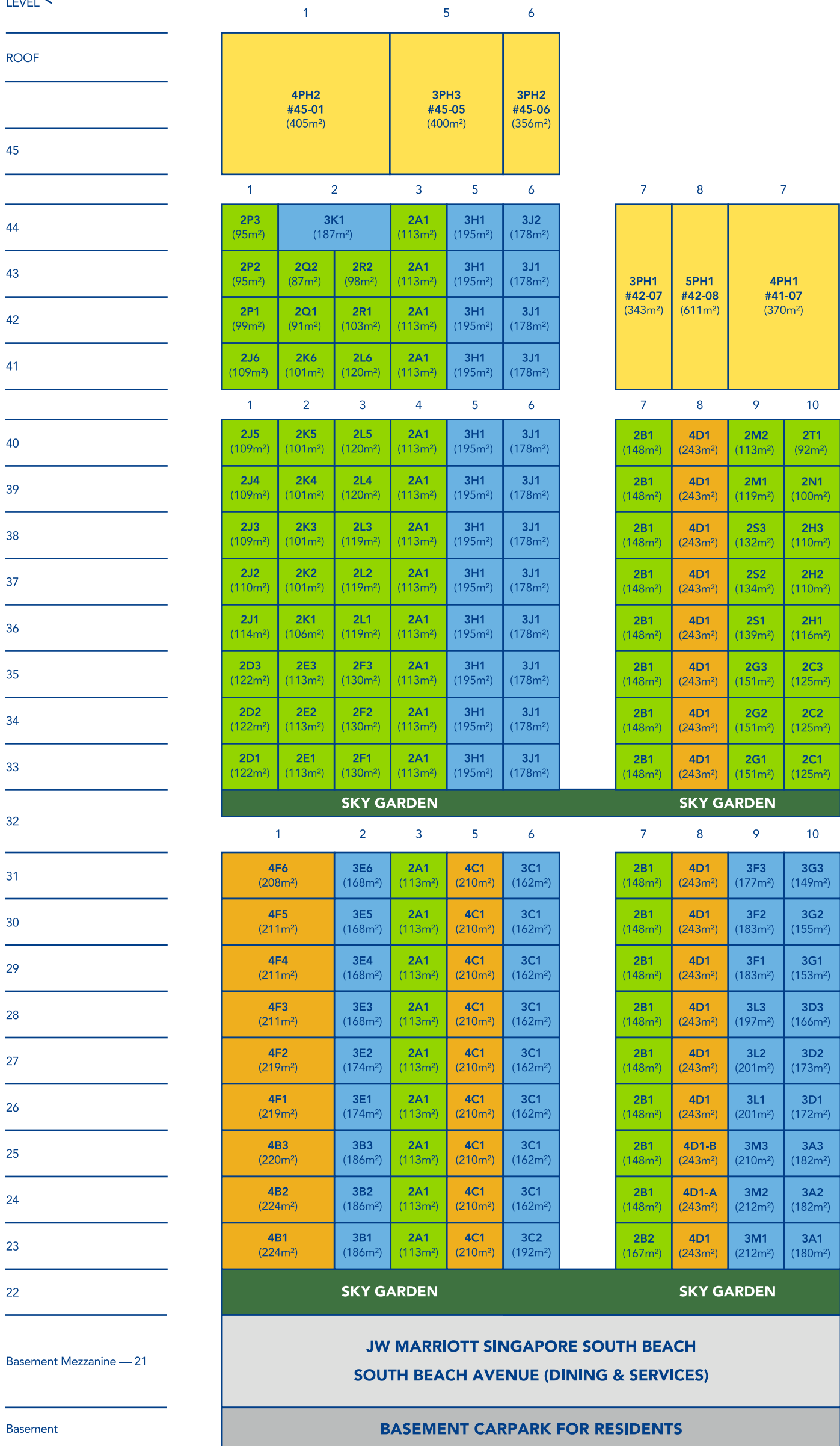


- | | | | | |
|-------------------------|-------------------------|--------------------------|--------------------------|----------------|
| A Exercise Zone (Grass) | C Children's Playground | E Interactive Playground | G Gourmet Pantry | I Reading Room |
| B Exercise Deck | D Children's Pool | F Changing Rooms | H Outdoor Waiting Lounge | |



SCHEMATIC DIAGRAM

UNIT
LEVEL



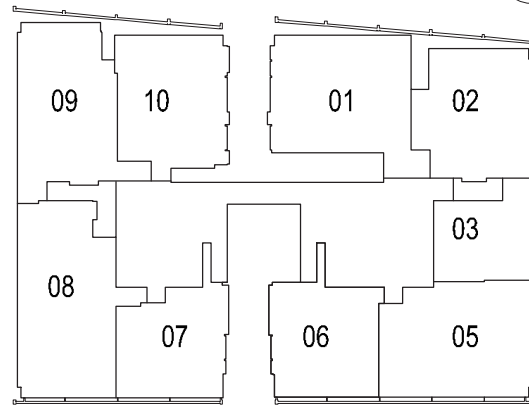
STOREY KEY PLANS

TO ORCHARD ROAD ▲

BEACH ROAD

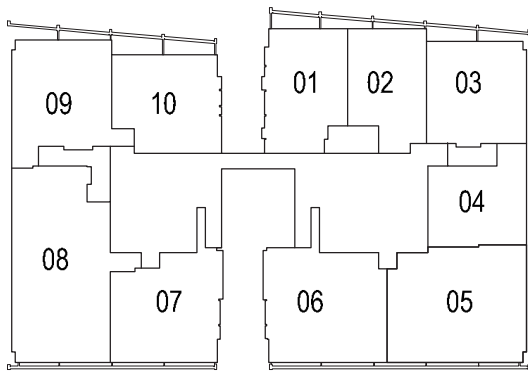


FOR LEVEL 23

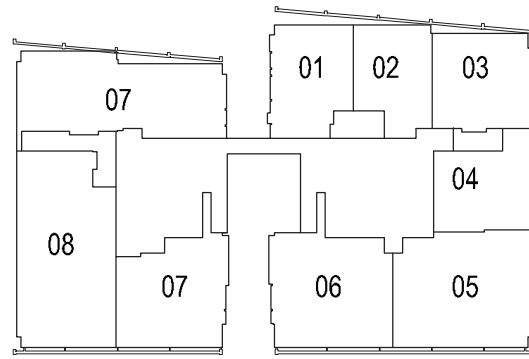


FOR LEVELS 24-31

BRAS BASAH ROAD

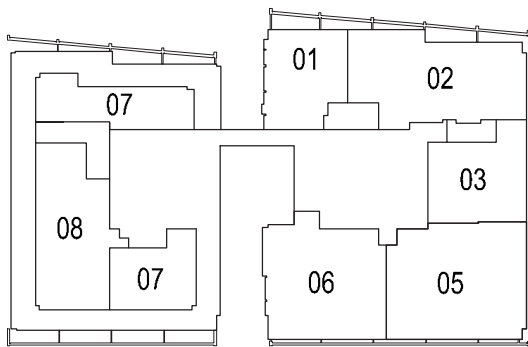


FOR LEVELS 33-40



FOR LEVELS 41-43

MIDDLE ROAD



FOR LEVEL 44

NICOLL HIGHWAY

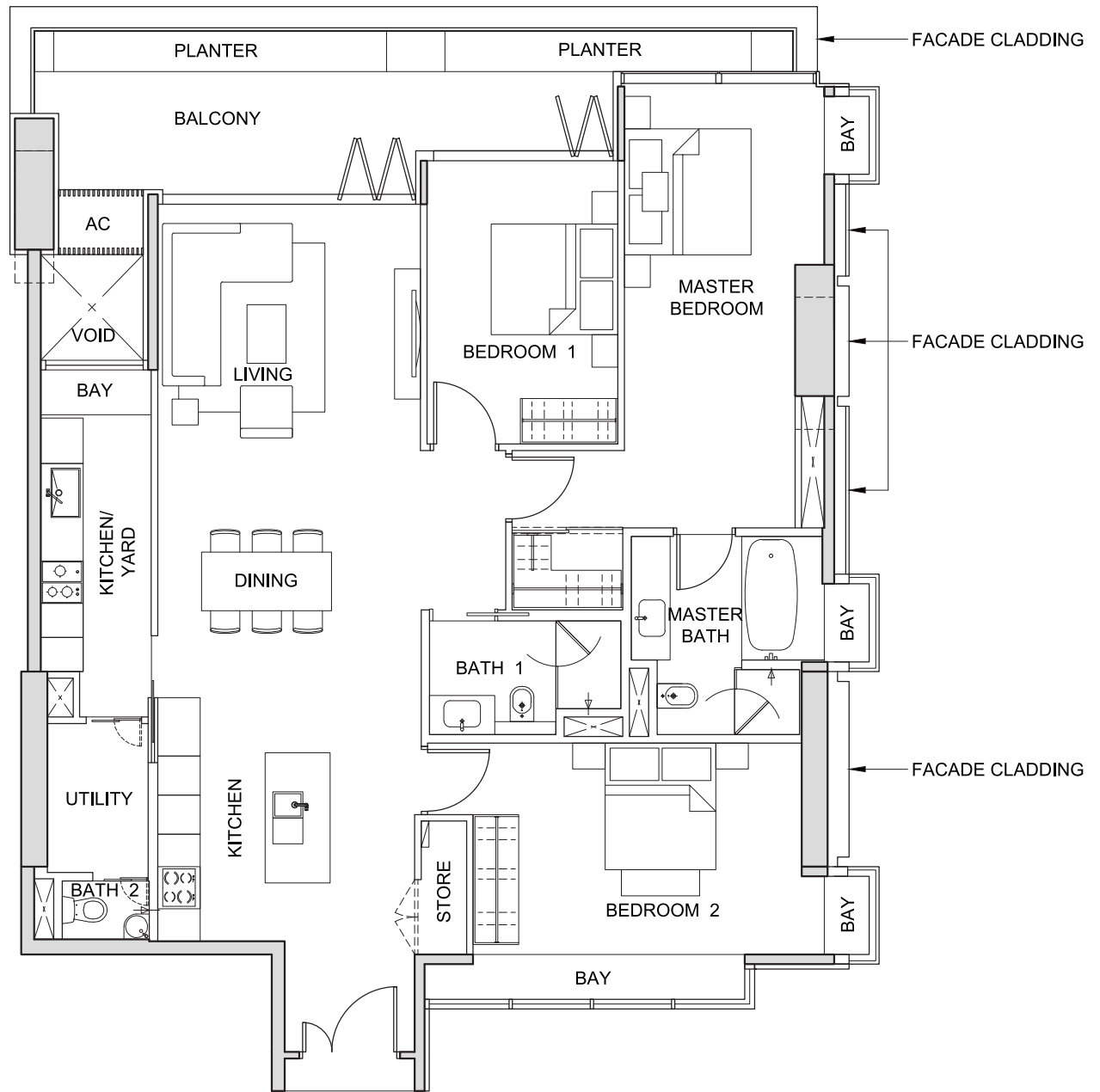
▼ TO MARINA BAY SANDS

TYPE 3A1

3-BEDROOM

(180 sq m / 1,938 sq ft)

#23-10



NOT TO SCALE



FOR LEVEL 23

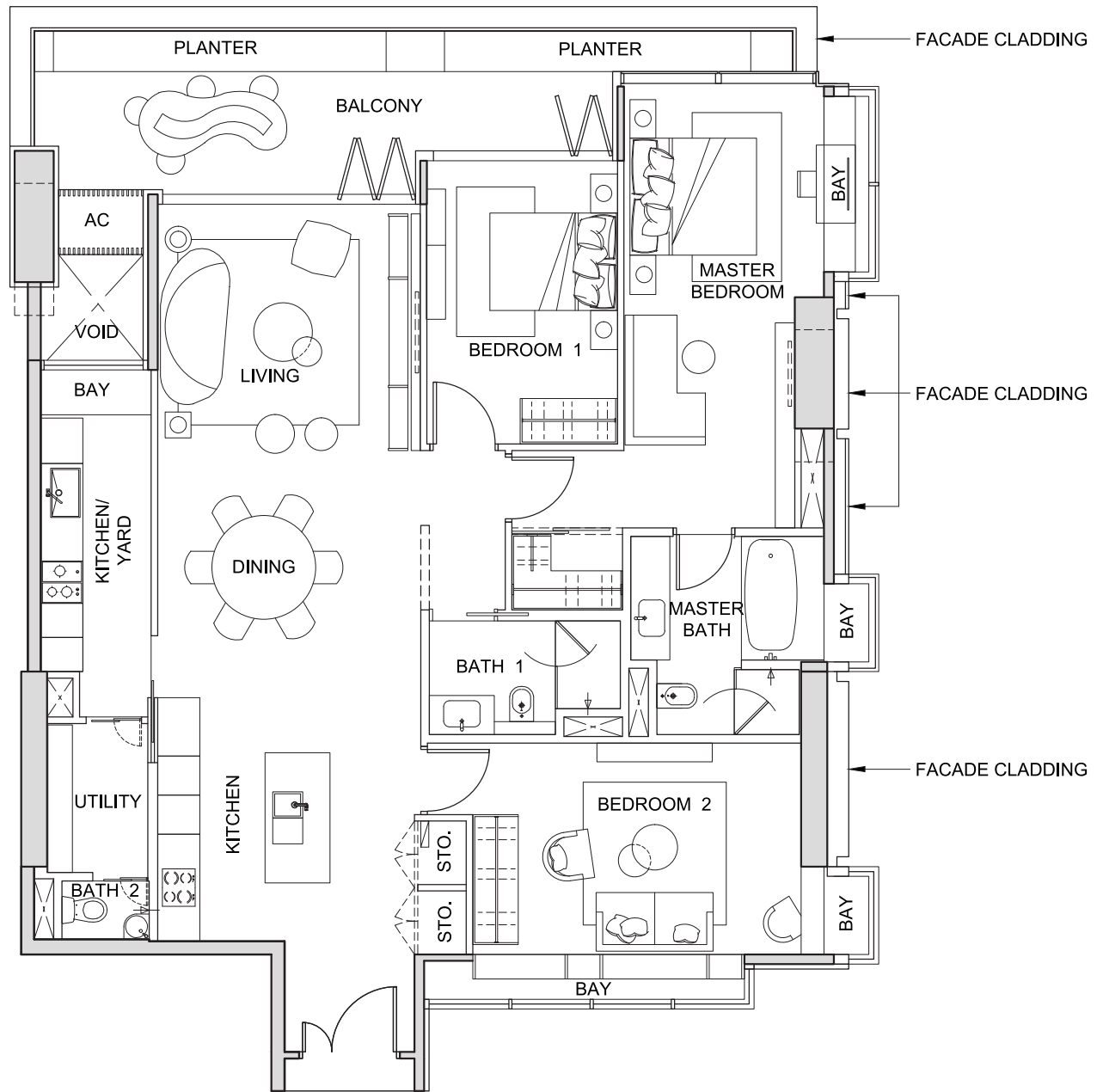
The above plans and illustrations are subject to change as may be required or approved by the relevant authorities. All measurements are estimates only and are subject to final survey.

TYPE 3A2

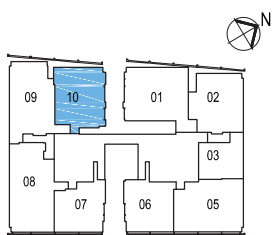
3-BEDROOM

(182 sq m / 1,959 sq ft)

#24-10



NOT TO SCALE



FOR LEVEL 24

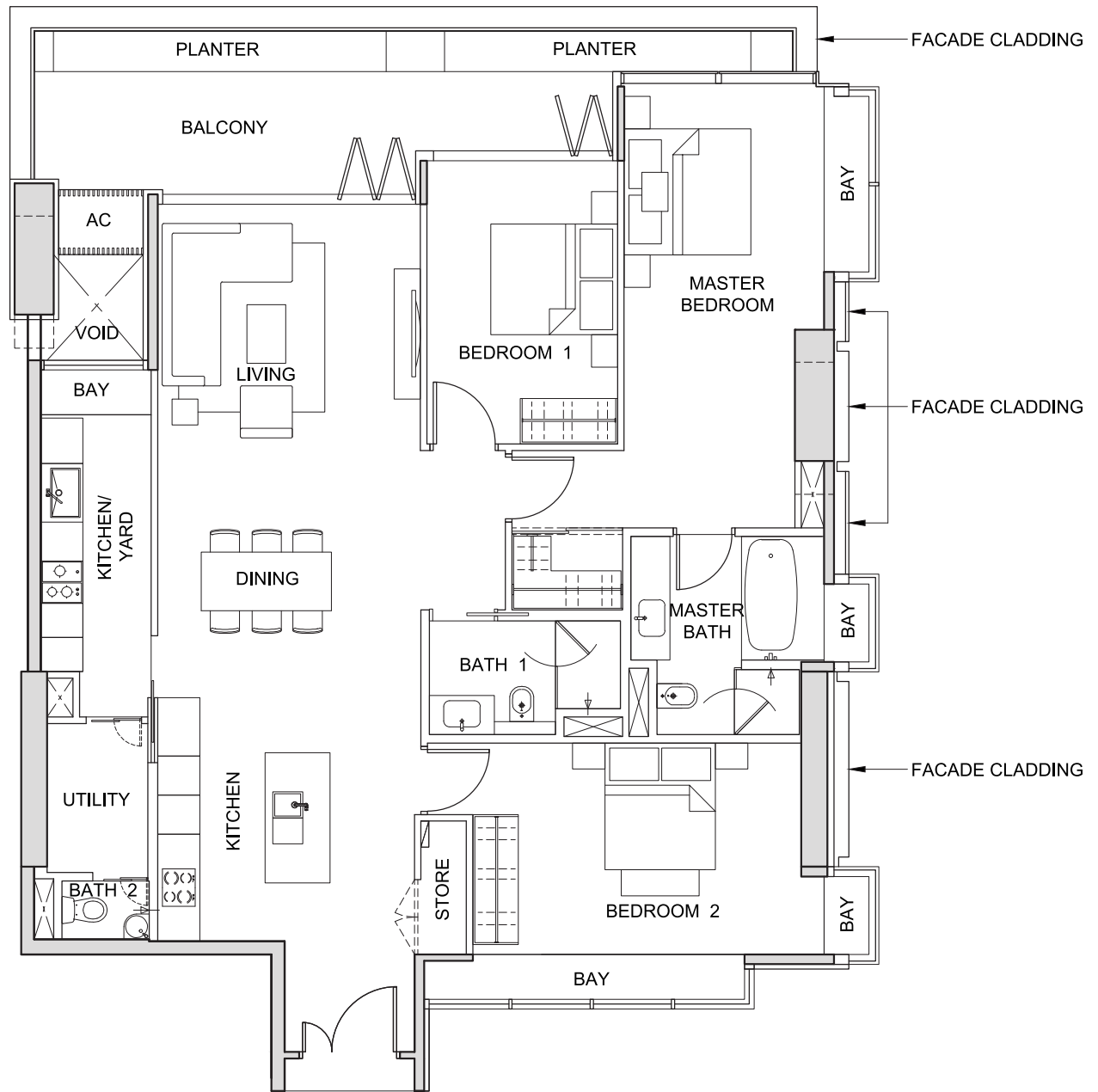
The above plans and illustrations are subject to change as may be required or approved by the relevant authorities. All measurements are estimates only and are subject to final survey.

TYPE 3A3

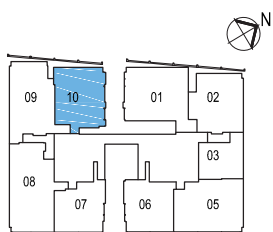
3-BEDROOM

(182 sq m / 1,959 sq ft)

#25-10



NOT TO SCALE



FOR LEVEL 25

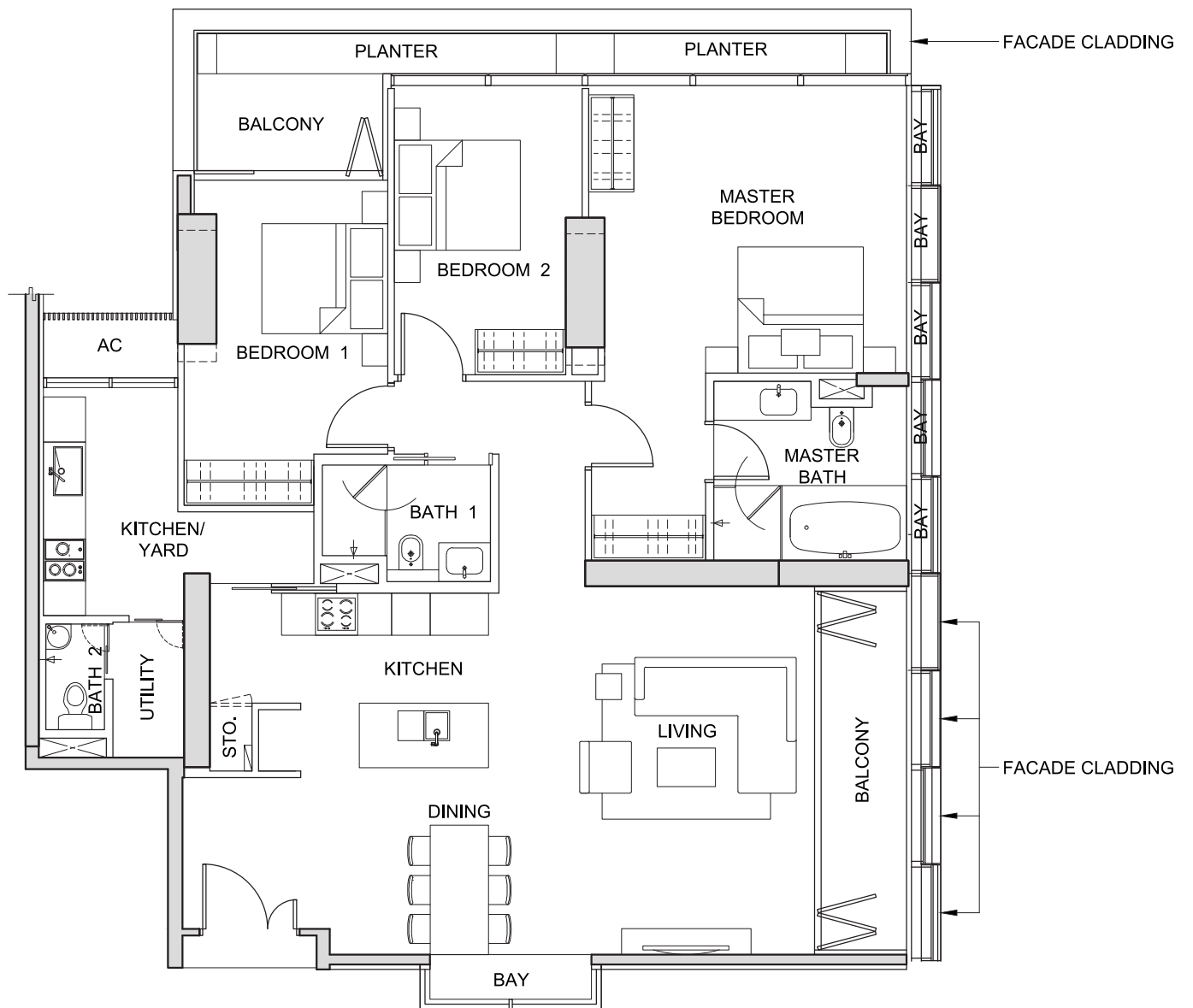
The above plans and illustrations are subject to change as may be required or approved by the relevant authorities. All measurements are estimates only and are subject to final survey.

TYPE 3B1

3-BEDROOM

(186 sq m / 2,002 sq ft)

#23-02



NOT TO SCALE



FOR LEVEL 23

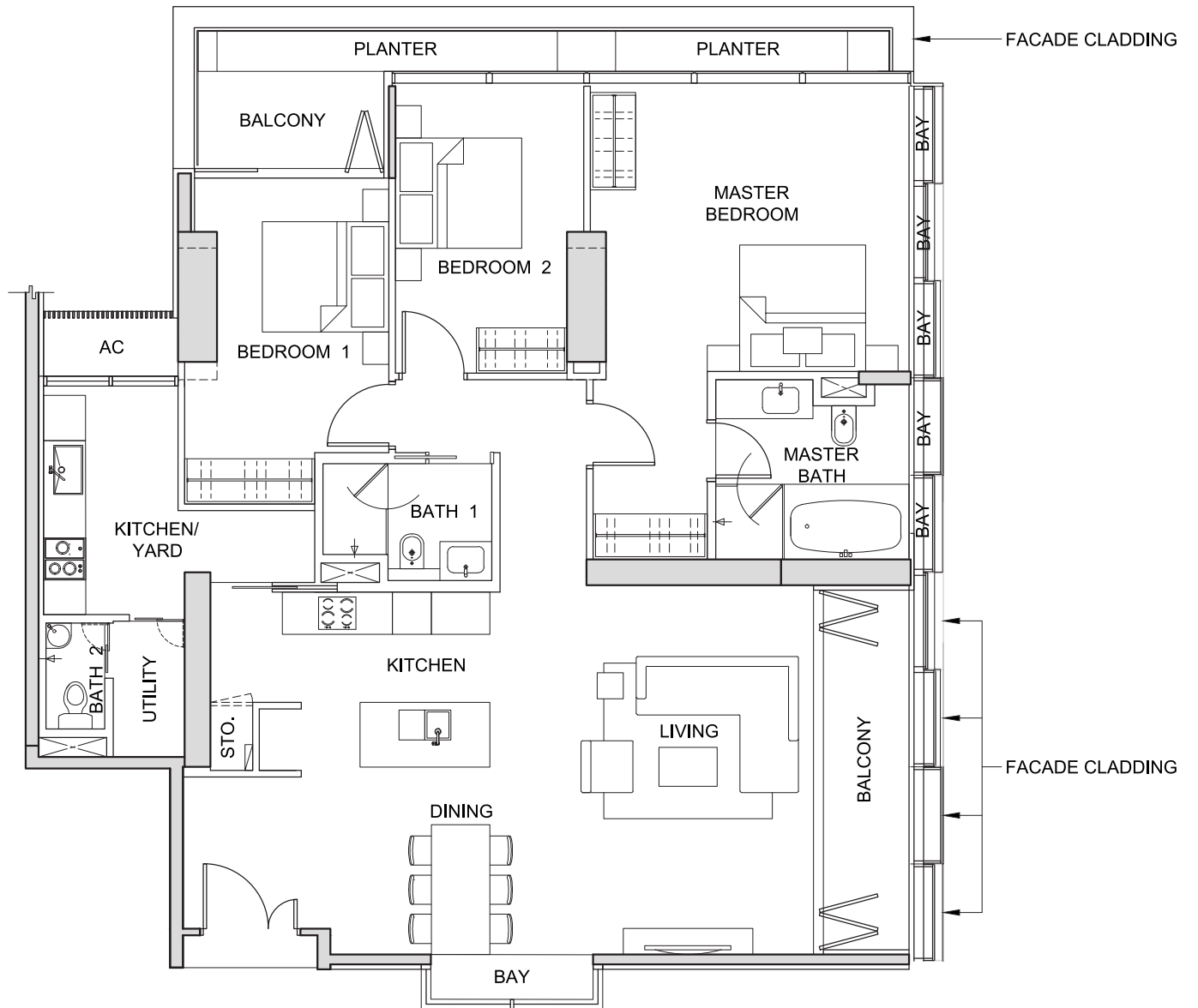
The above plans and illustrations are subject to change as may be required or approved by the relevant authorities. All measurements are estimates only and are subject to final survey.

TYPE 3B2

3-BEDROOM

(186 sq m / 2,002 sq ft)

#24-02



NOT TO SCALE



FOR LEVEL 24

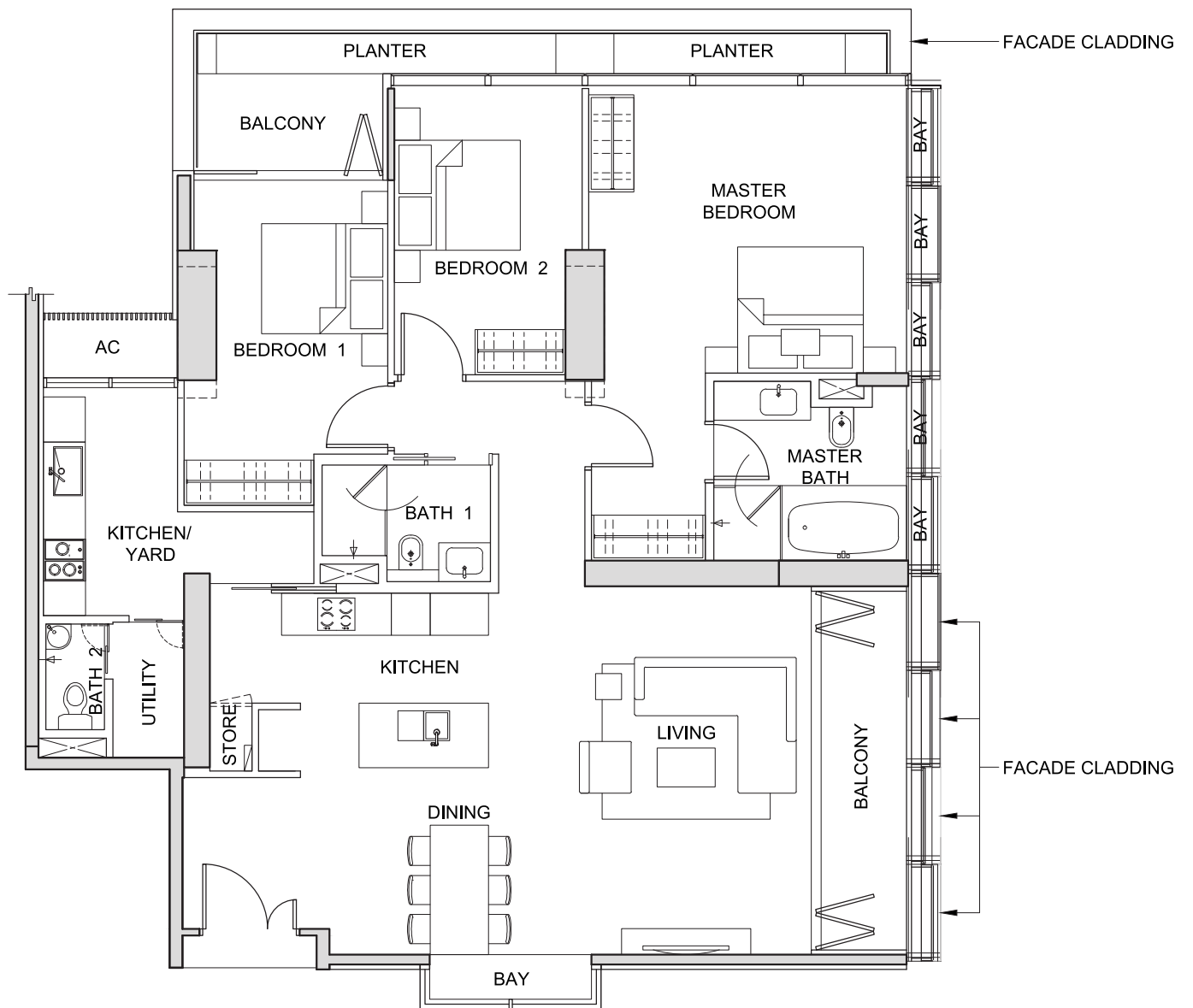
The above plans and illustrations are subject to change as may be required or approved by the relevant authorities. All measurements are estimates only and are subject to final survey.

TYPE 3B3

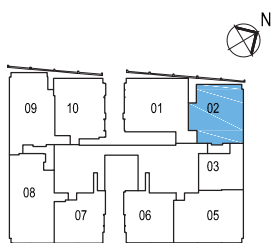
3-BEDROOM

(186 sq m / 2,002 sq ft)

#25-02



NOT TO SCALE



FOR LEVEL 25

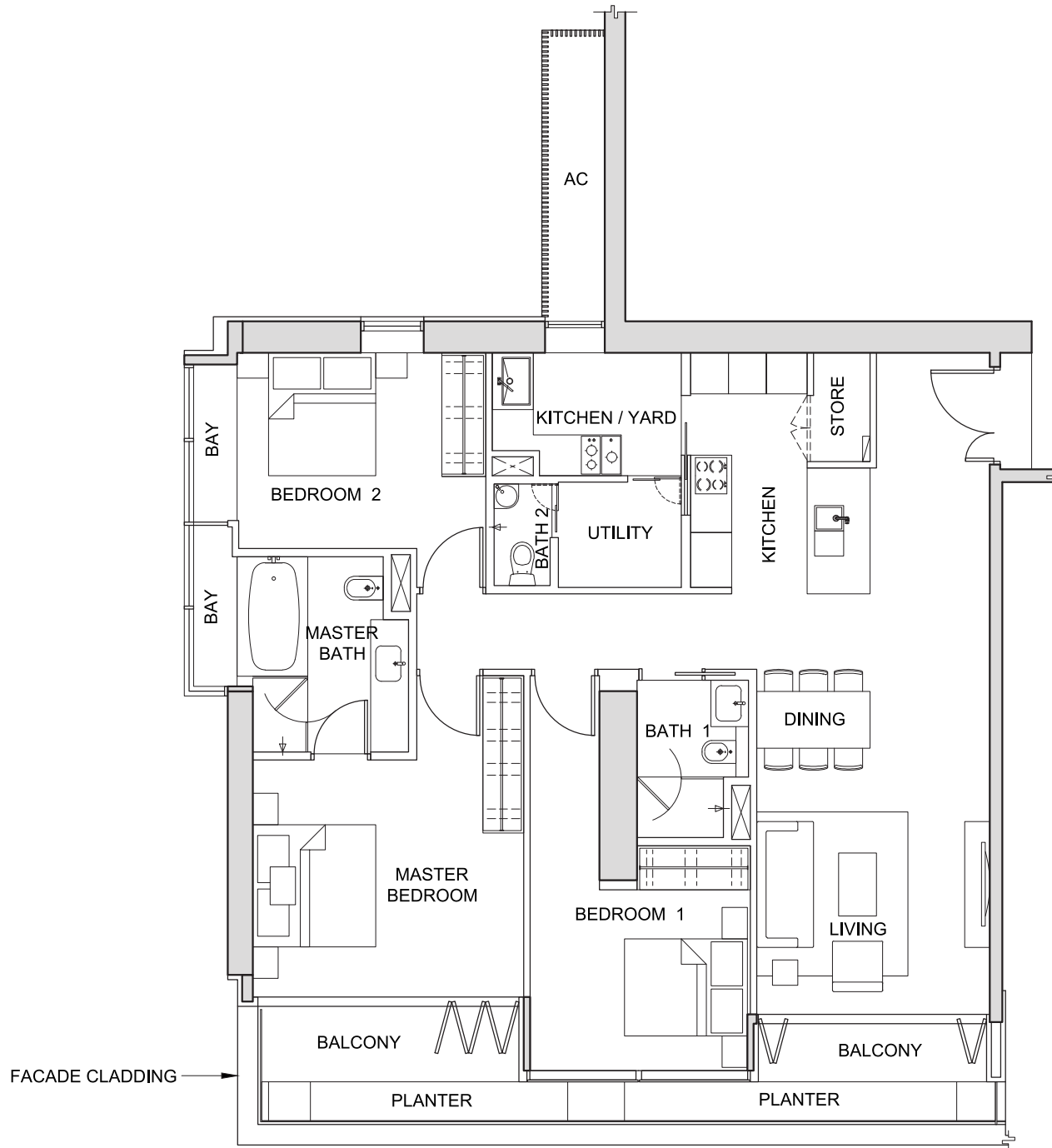
The above plans and illustrations are subject to change as may be required or approved by the relevant authorities. All measurements are estimates only and are subject to final survey.

TYPE 3C1

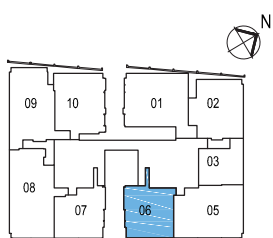
3-BEDROOM

(162 sq m / 1,744 sq ft)

- #24-06
- #25-06
- #26-06
- #27-06
- #28-06
- #29-06
- #30-06
- #31-06



NOT TO SCALE



FOR LEVELS 24-31

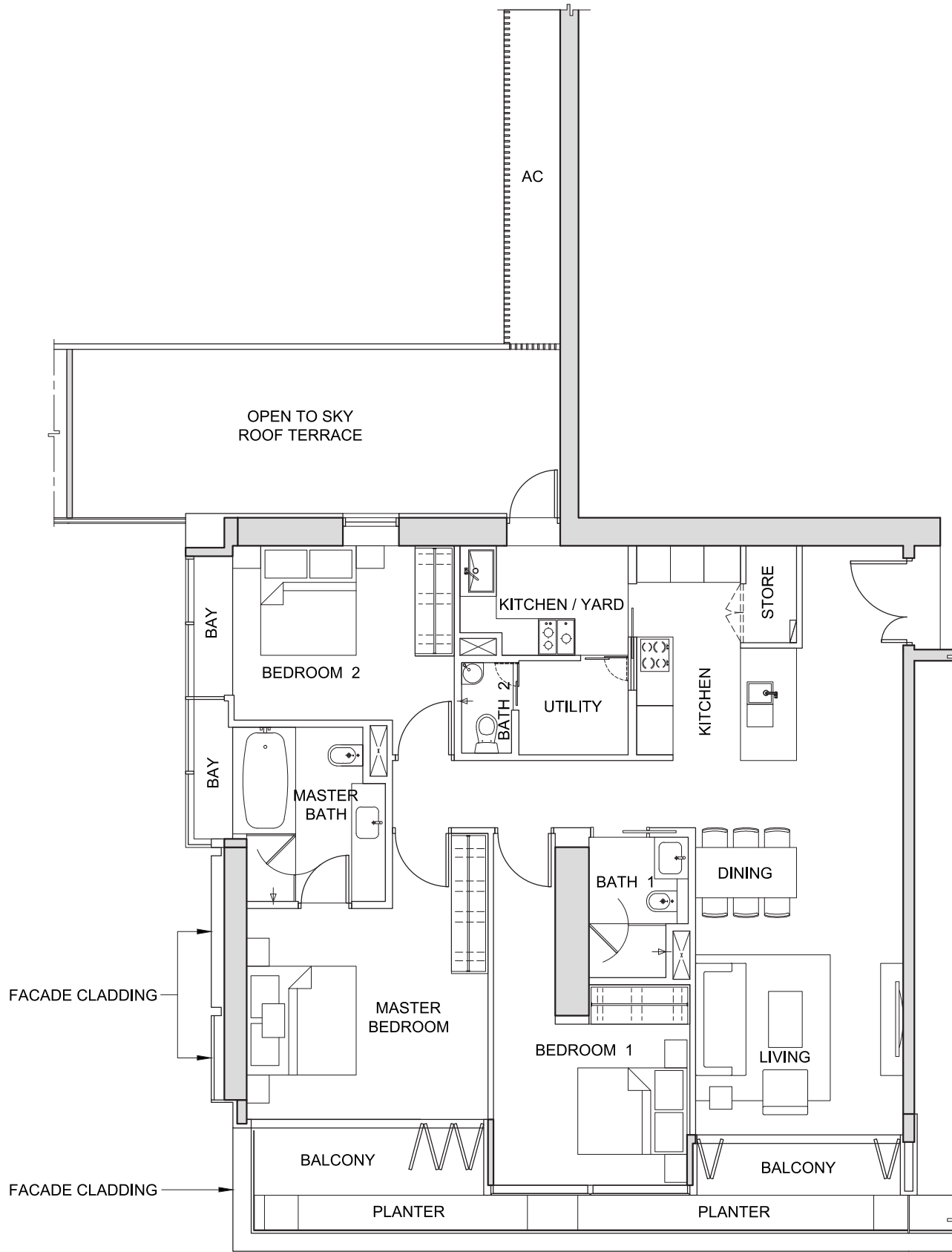
The above plans and illustrations are subject to change as may be required or approved by the relevant authorities. All measurements are estimates only and are subject to final survey.

TYPE 3C2

3-BEDROOM

(192 sq m / 2,067 sq ft)

#23-06



NOT TO SCALE



FOR LEVEL 23

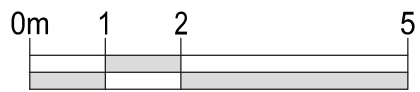
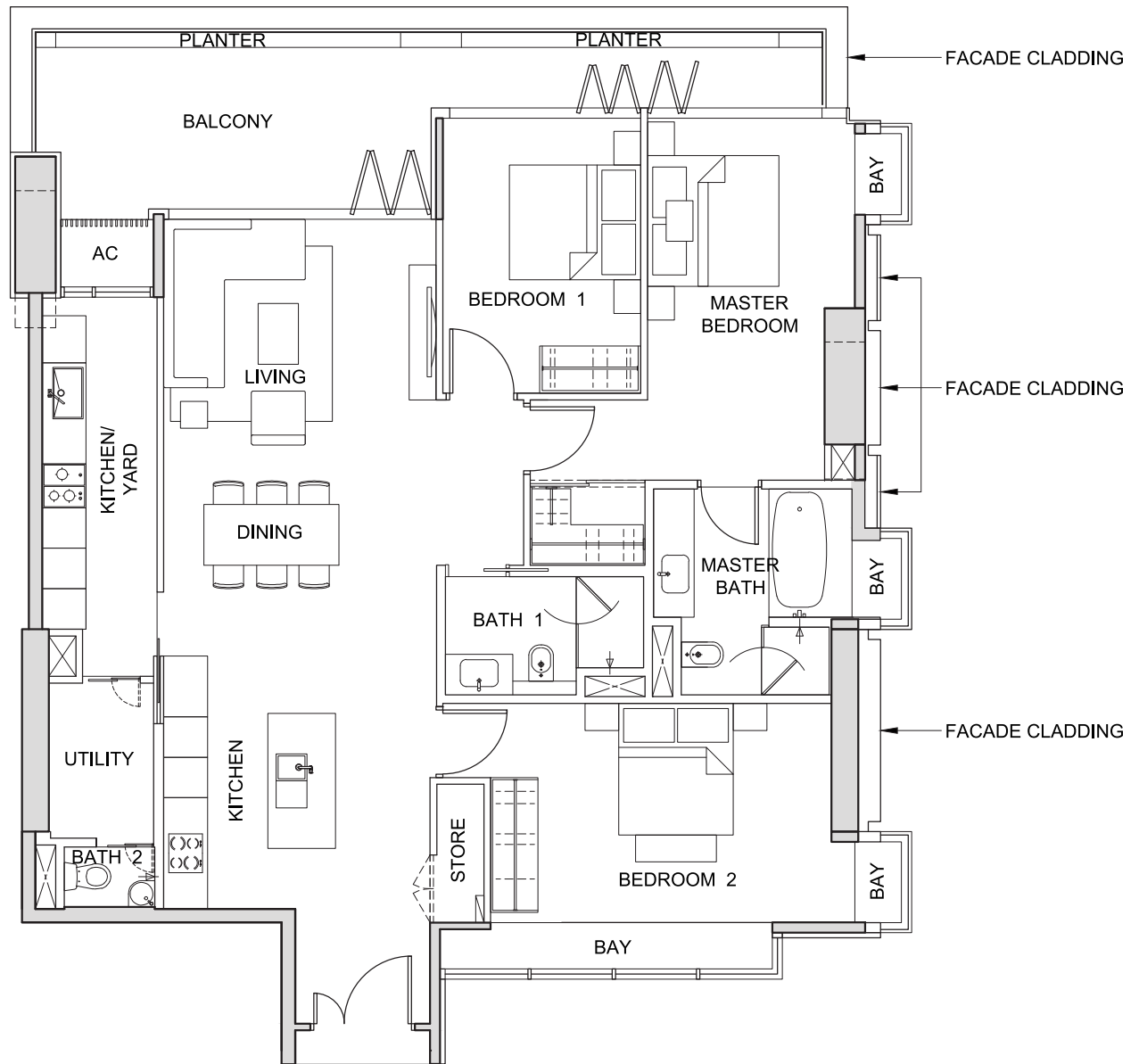
The above plans and illustrations are subject to change as may be required or approved by the relevant authorities. All measurements are estimates only and are subject to final survey.

TYPE 3D1

3-BEDROOM

(172 sq m / 1,851 sq ft)

#26-10



NOT TO SCALE



FOR LEVEL 26

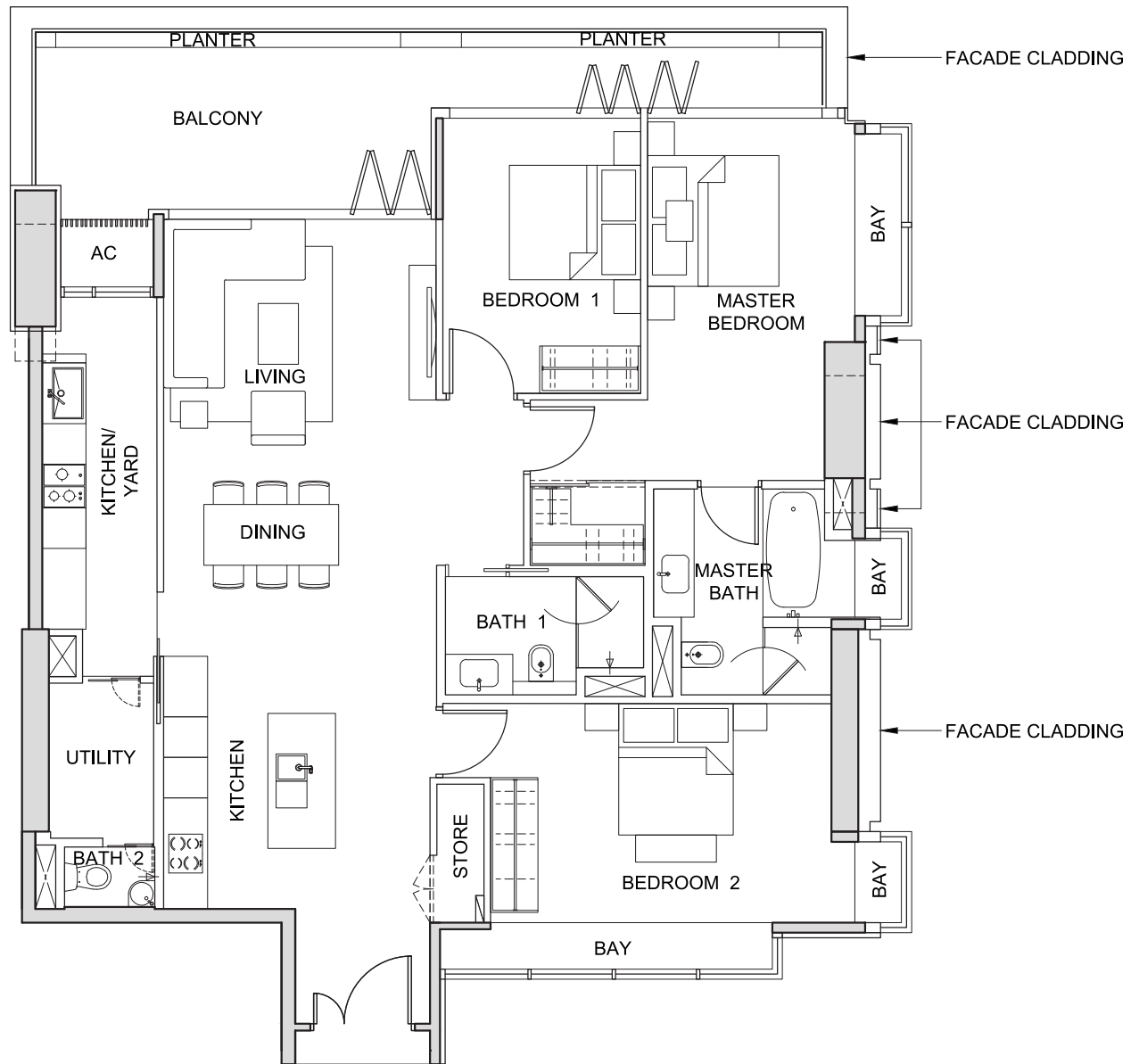
The above plans and illustrations are subject to change as may be required or approved by the relevant authorities. All measurements are estimates only and are subject to final survey.

TYPE 3D2

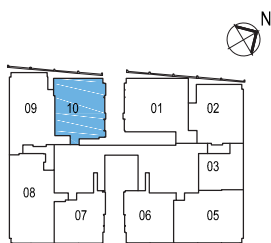
3-BEDROOM

(173 sq m / 1,862 sq ft)

#27-10



NOT TO SCALE



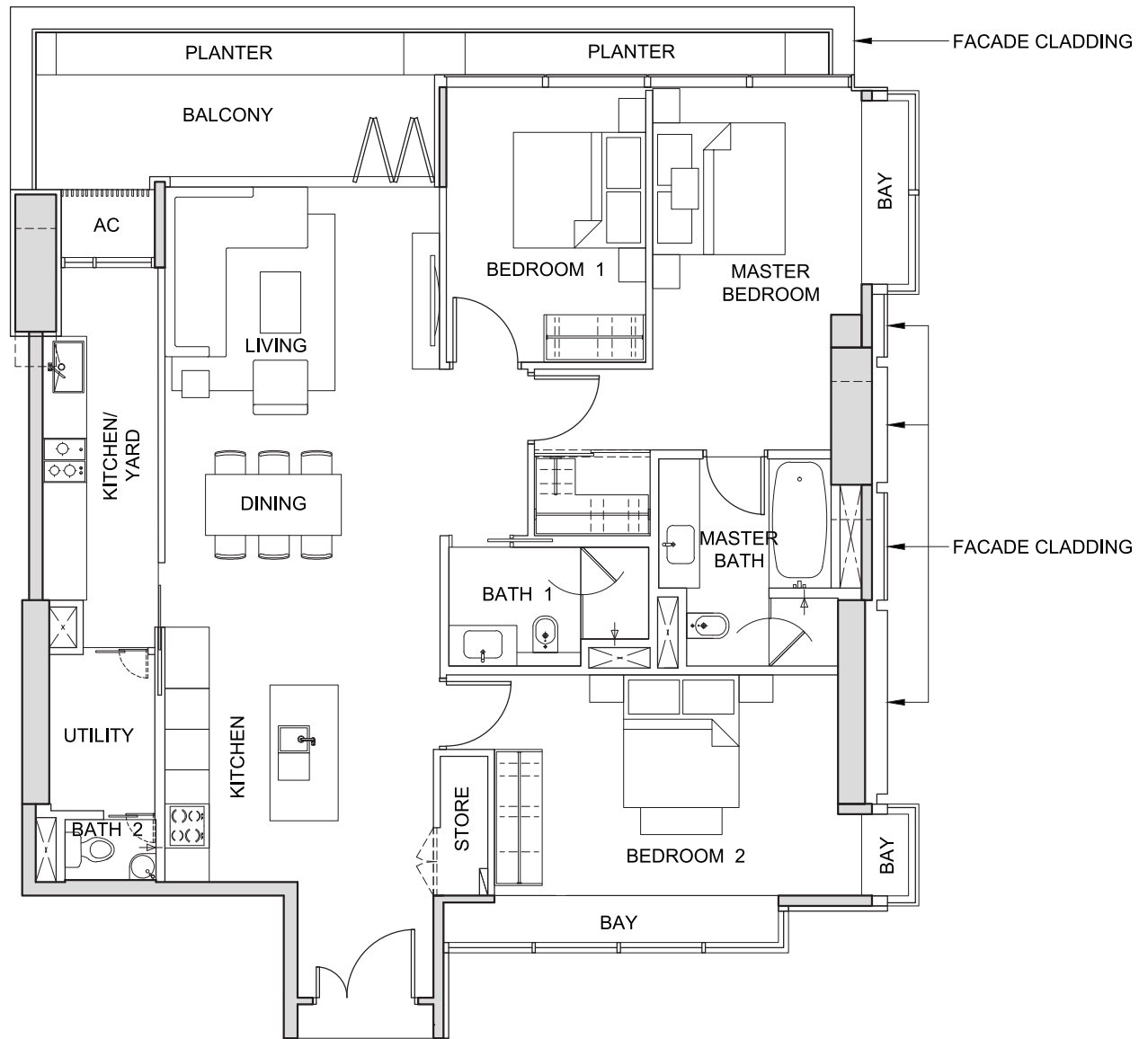
The above plans and illustrations are subject to change as may be required or approved by the relevant authorities. All measurements are estimates only and are subject to final survey.

TYPE 3D3

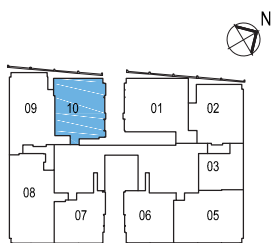
3-BEDROOM

(166 sq m / 1,787 sq ft)

#28-10



NOT TO SCALE



FOR LEVEL 28

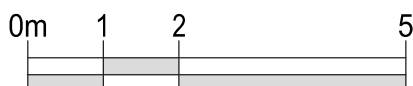
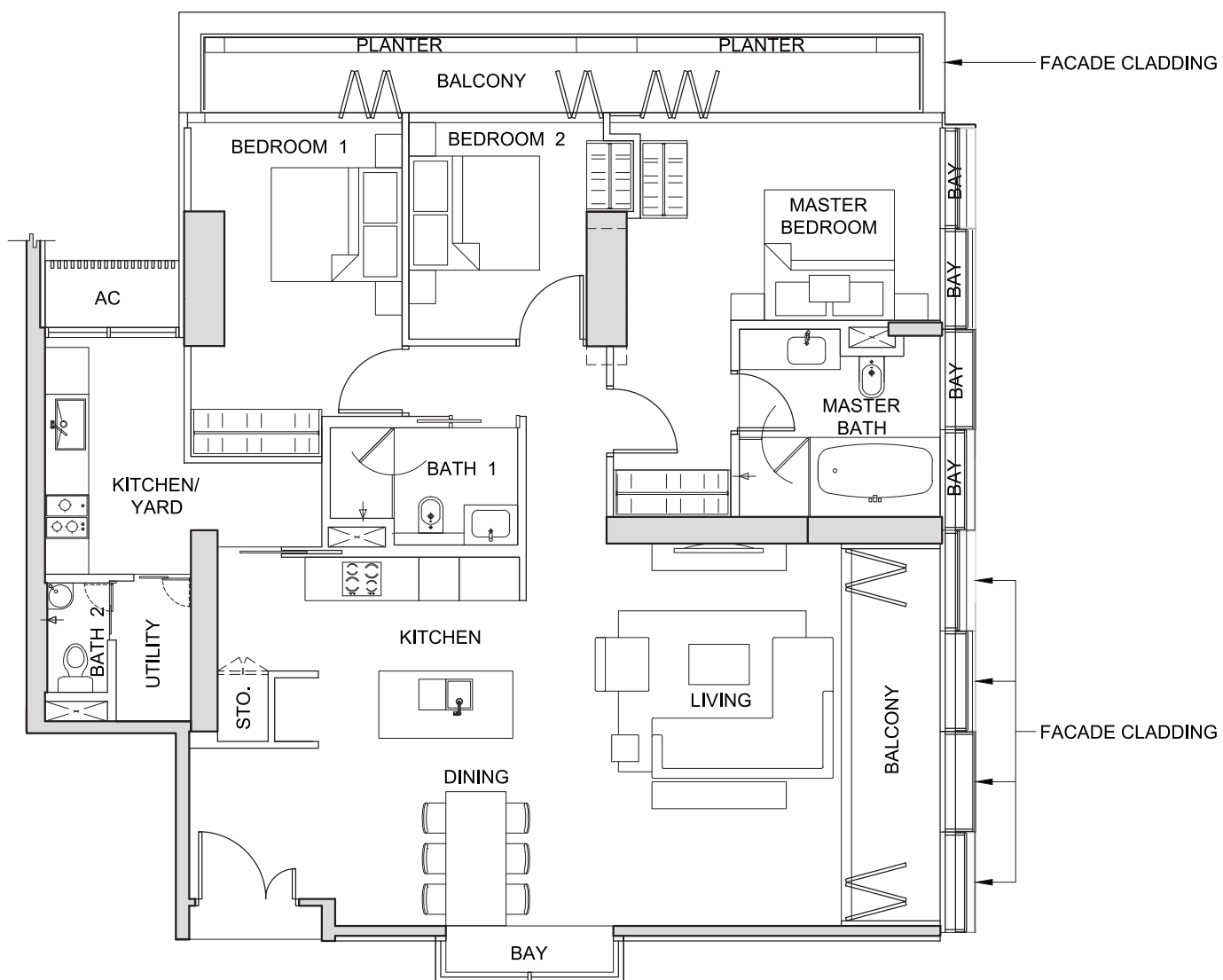
The above plans and illustrations are subject to change as may be required or approved by the relevant authorities. All measurements are estimates only and are subject to final survey.

TYPE 3E1

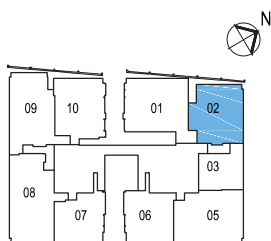
3-BEDROOM

(174 sq m / 1,873 sq ft)

#26-02



NOT TO SCALE



FOR LEVEL 26

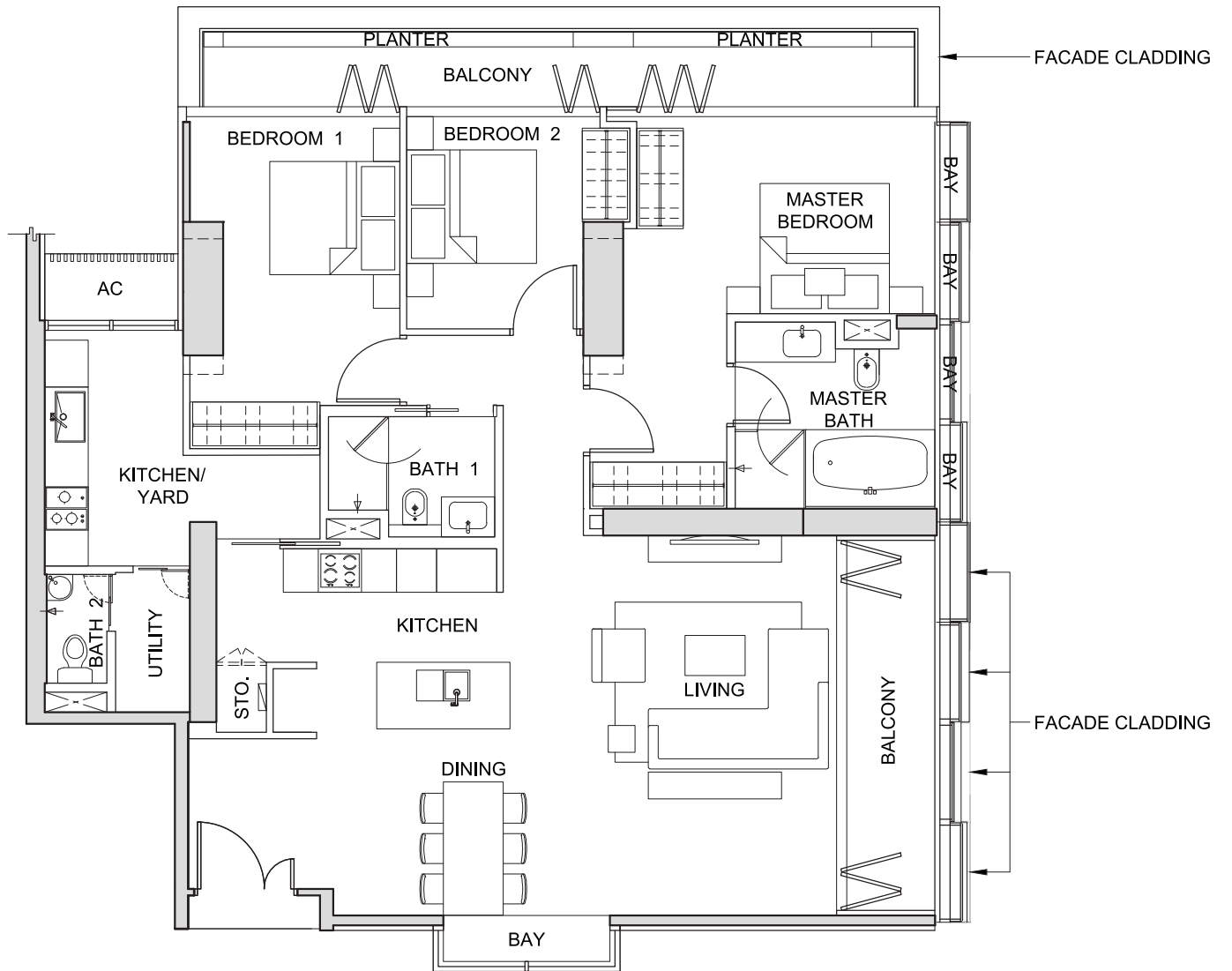
The above plans and illustrations are subject to change as may be required or approved by the relevant authorities. All measurements are estimates only and are subject to final survey.

TYPE 3E2

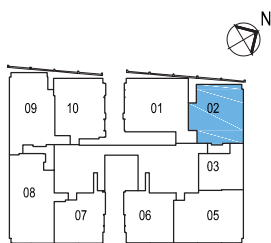
3-BEDROOM

(174 sq m / 1,873 sq ft)

#27-02



NOT TO SCALE



FOR LEVEL 27

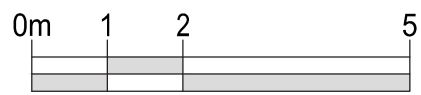
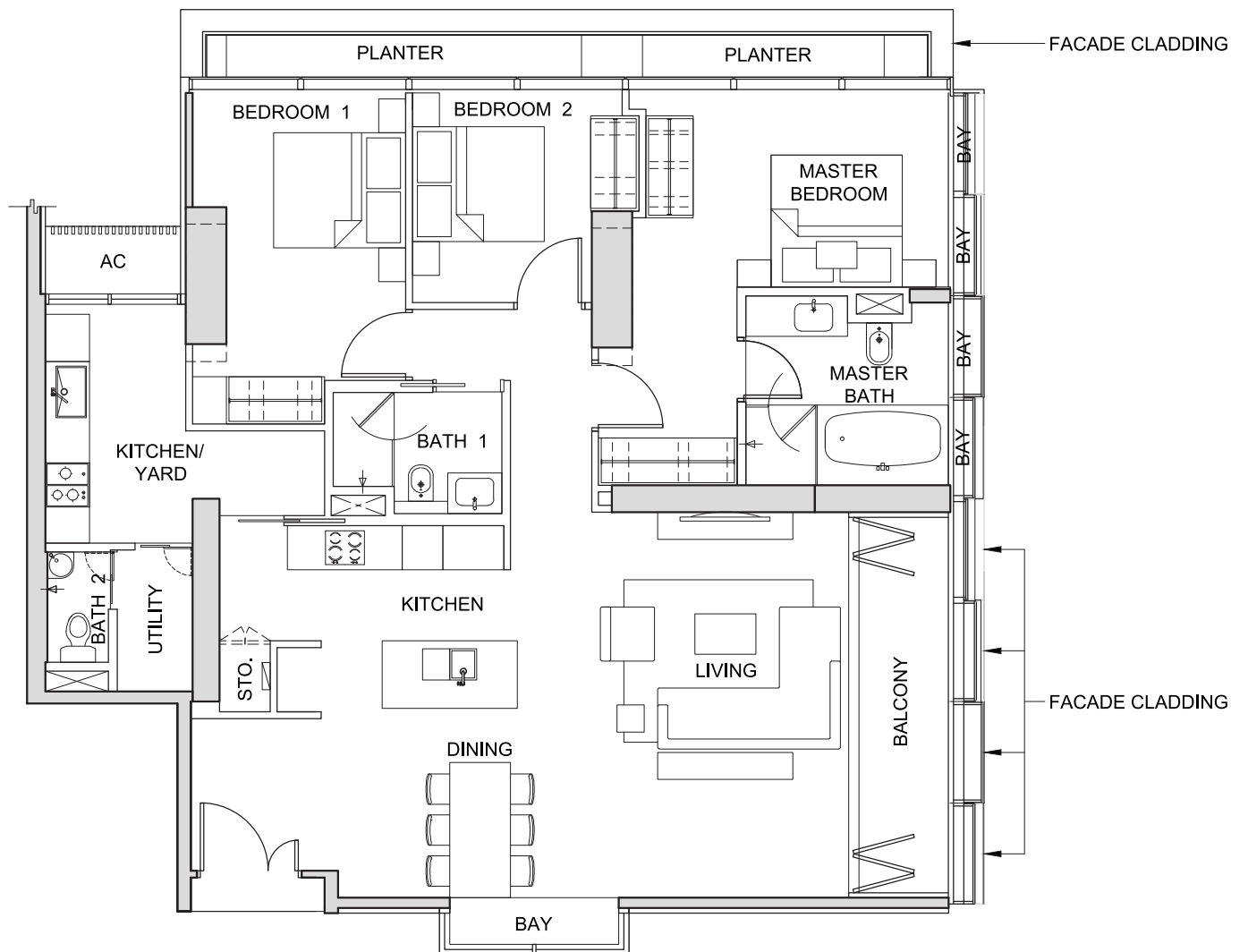
The above plans and illustrations are subject to change as may be required or approved by the relevant authorities. All measurements are estimates only and are subject to final survey.

TYPE 3E3

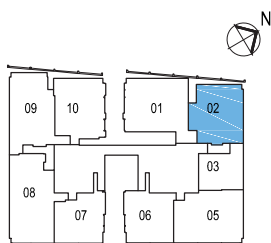
3-BEDROOM

(168 sq m / 1,808 sq ft)

#28-02



NOT TO SCALE



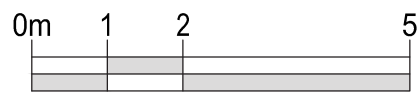
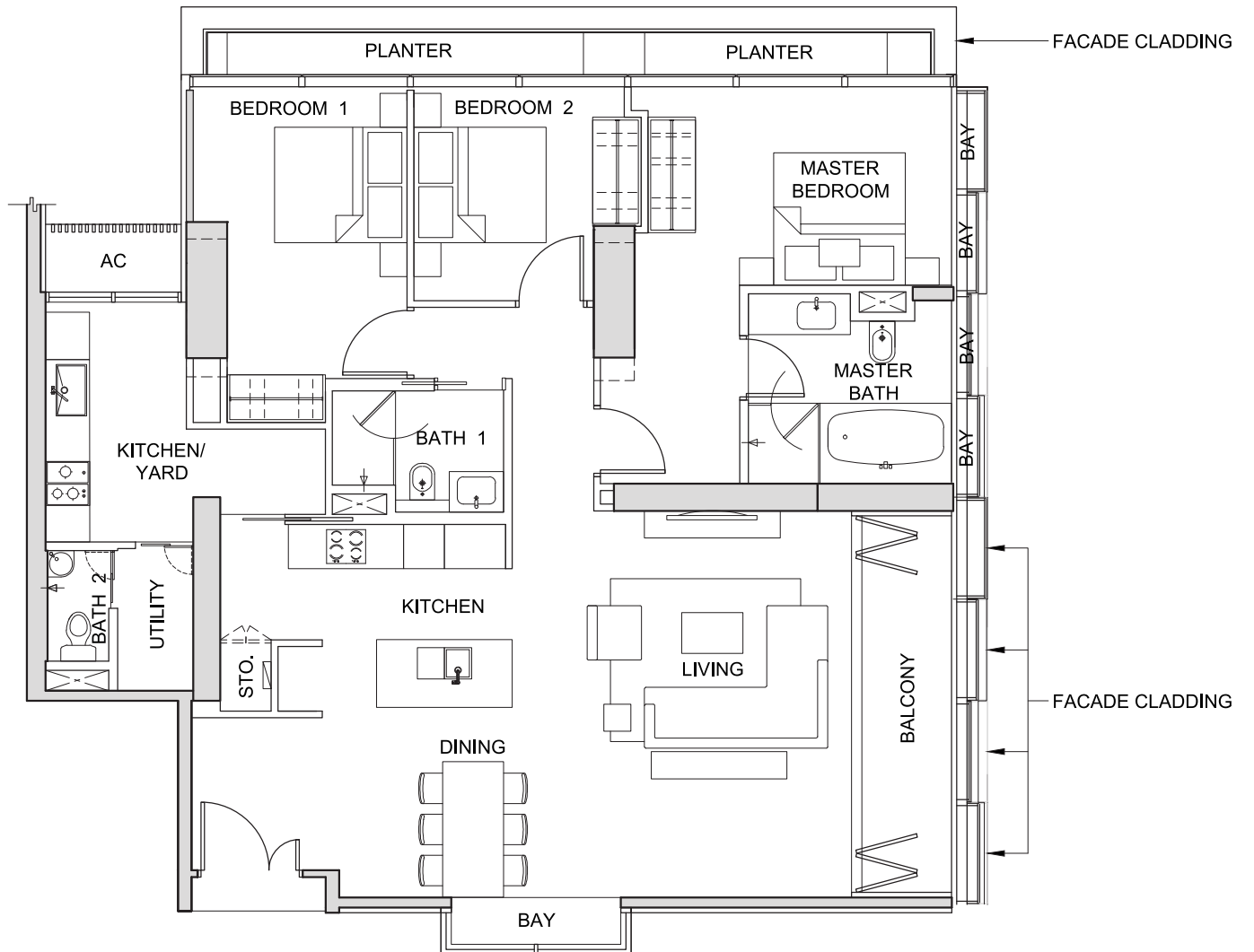
FOR LEVEL 28

The above plans and illustrations are subject to change as may be required or approved by the relevant authorities. All measurements are estimates only and are subject to final survey.

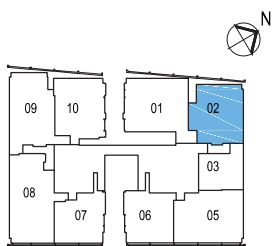
TYPE 3E4

3-BEDROOM
(168 sq m / 1,808 sq ft)

#29-02



NOT TO SCALE



FOR LEVEL 29

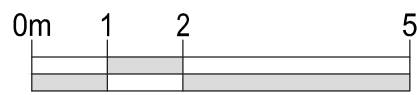
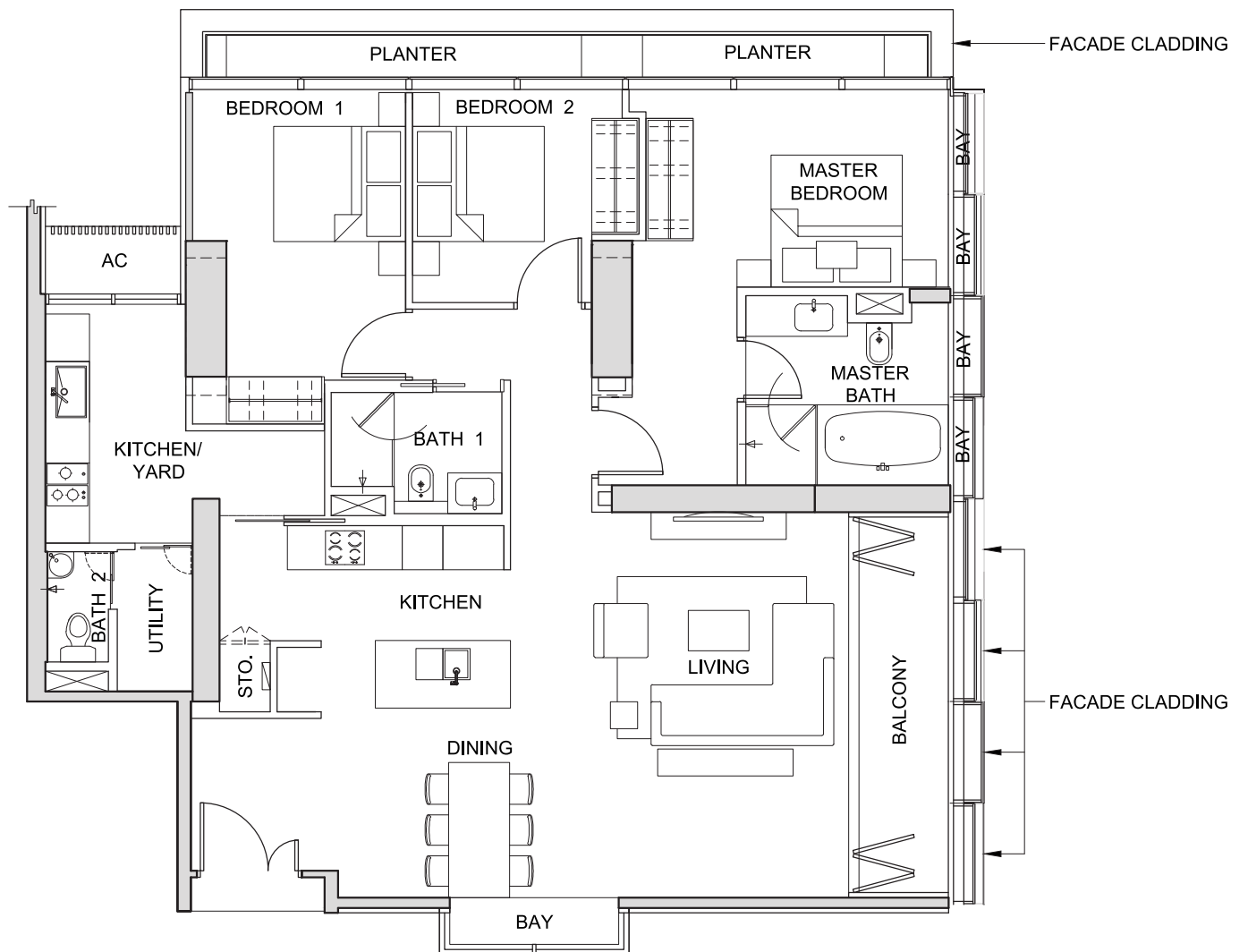
The above plans and illustrations are subject to change as may be required or approved by the relevant authorities. All measurements are estimates only and are subject to final survey.

TYPE 3E5

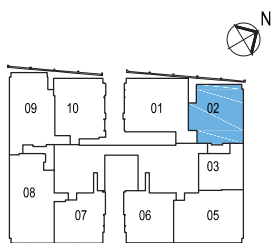
3-BEDROOM

(168 sq m / 1,808 sq ft)

#30-02



NOT TO SCALE



FOR LEVEL 30

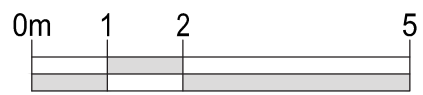
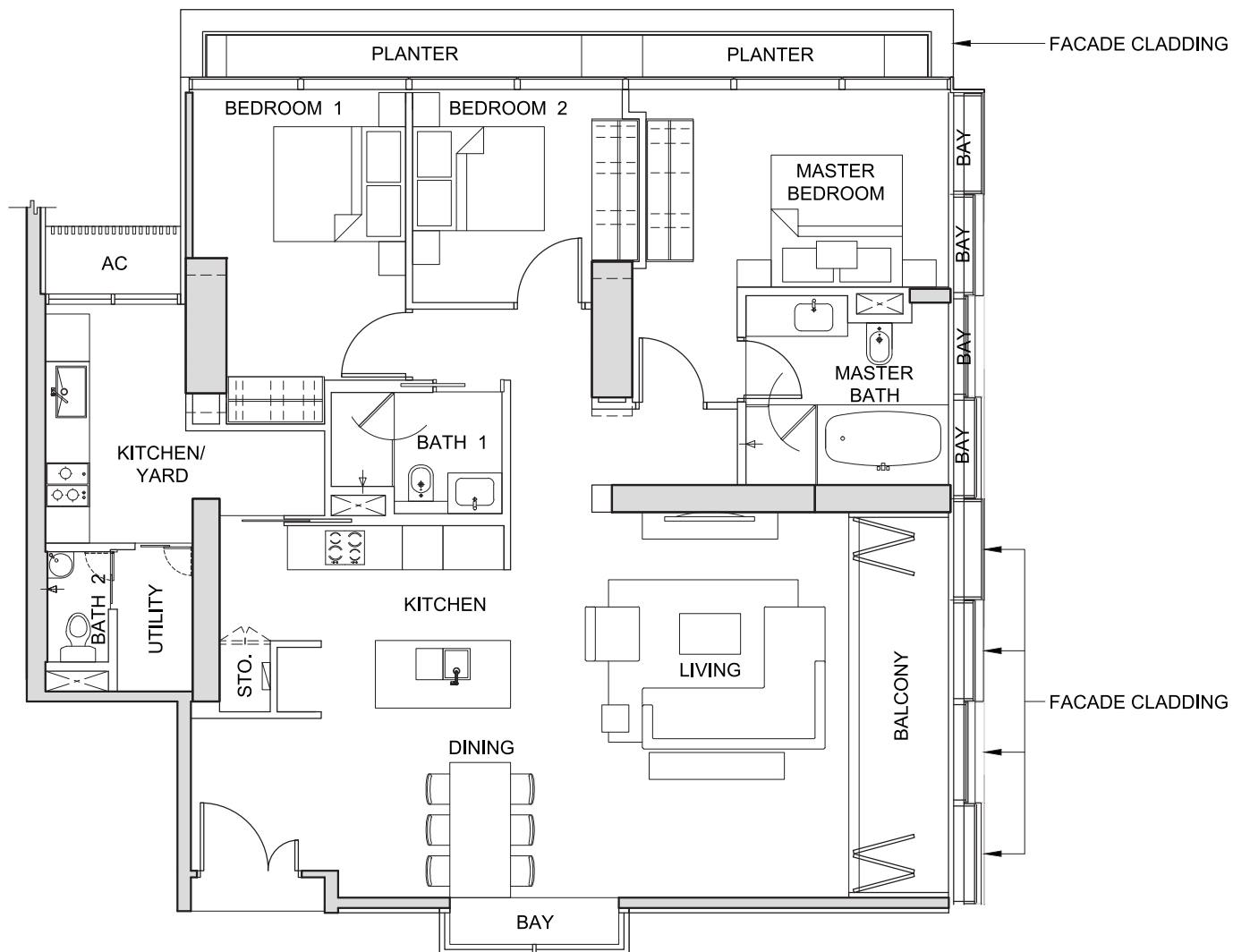
The above plans and illustrations are subject to change as may be required or approved by the relevant authorities. All measurements are estimates only and are subject to final survey.

TYPE 3E6

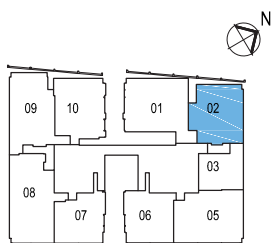
3-BEDROOM

(168 sq m / 1,808 sq ft)

#31-02



NOT TO SCALE



FOR LEVEL 31

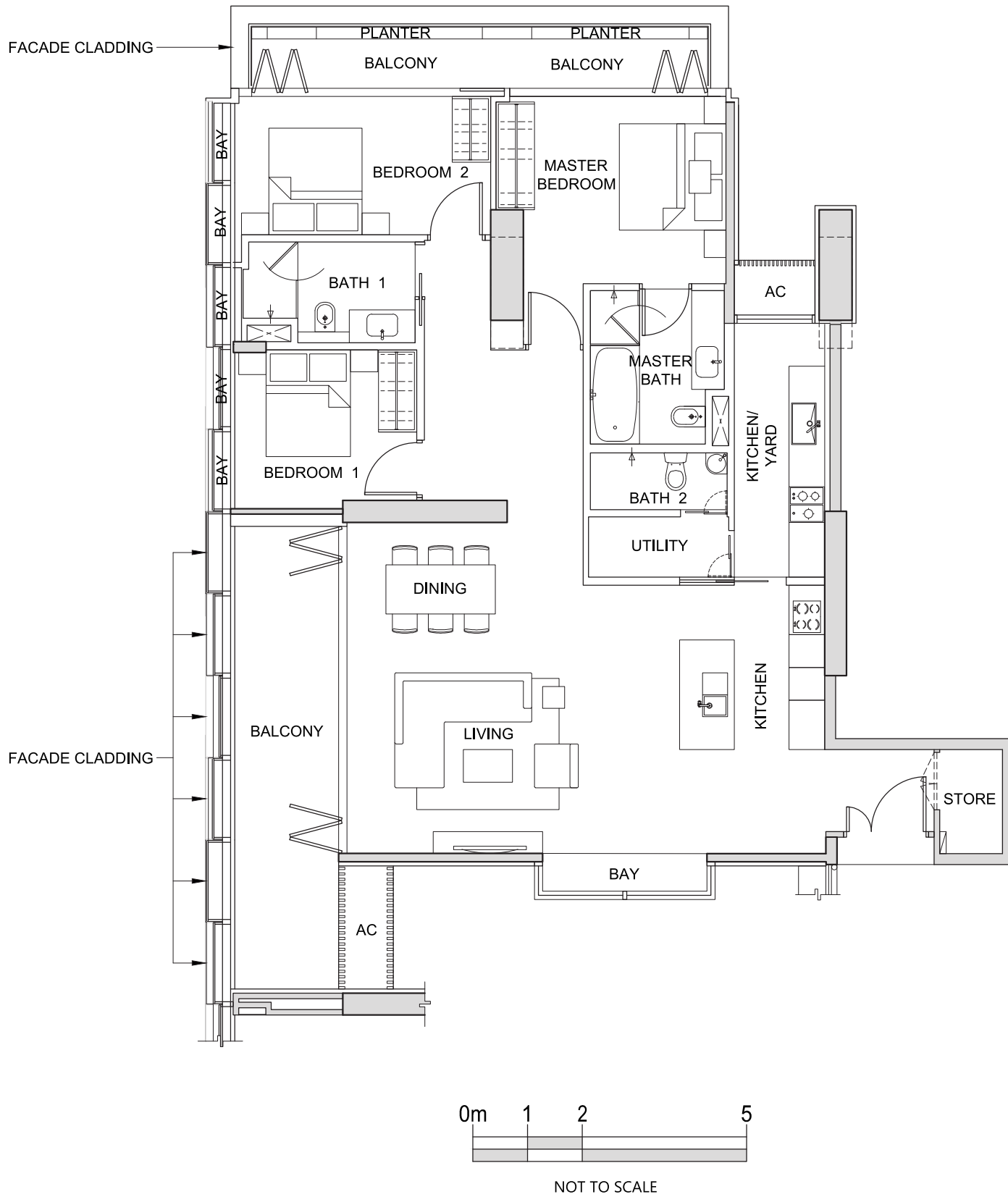
The above plans and illustrations are subject to change as may be required or approved by the relevant authorities. All measurements are estimates only and are subject to final survey.

TYPE 3F1

3-BEDROOM

(183 sq m / 1,970 sq ft)

#29-09



FOR LEVEL 29

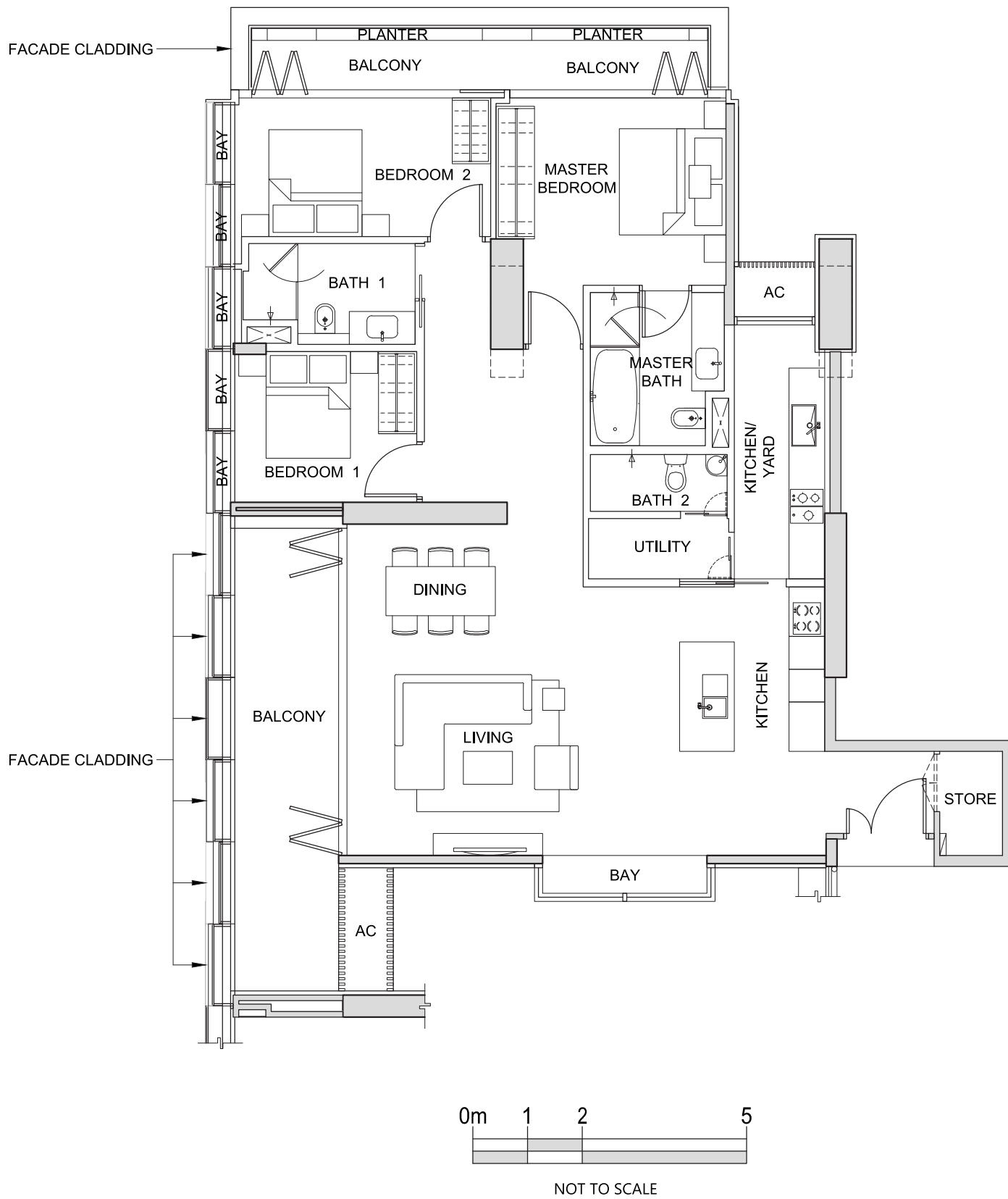
The above plans and illustrations are subject to change as may be required or approved by the relevant authorities. All measurements are estimates only and are subject to final survey.

TYPE 3F2

3-BEDROOM

(183 sq m / 1,970 sq ft)

#30-09



FOR LEVEL 30

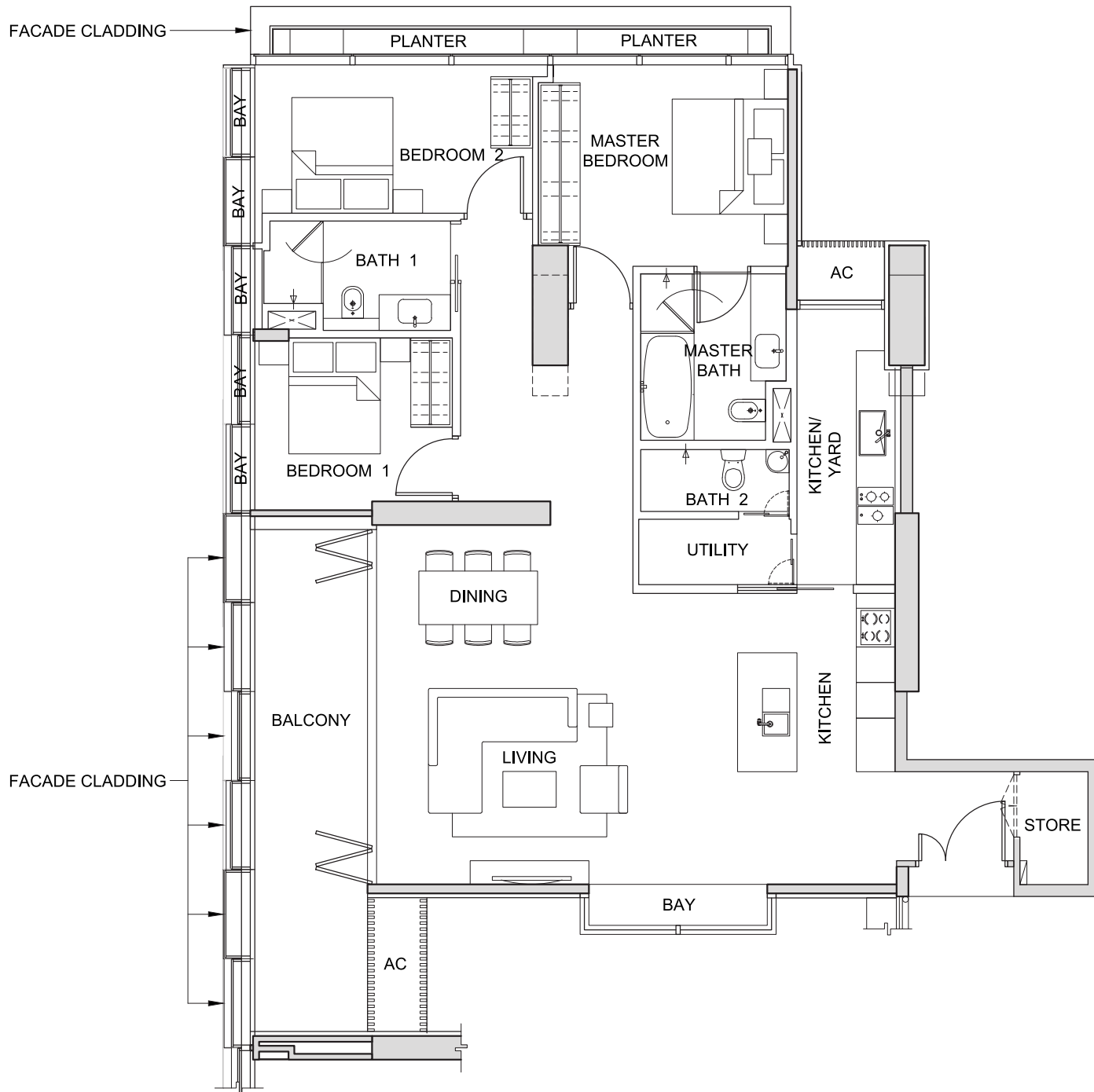
The above plans and illustrations are subject to change as may be required or approved by the relevant authorities. All measurements are estimates only and are subject to final survey.

TYPE 3F3

3-BEDROOM

(177 sq m / 1,905 sq ft)

#31-09



NOT TO SCALE



FOR LEVEL 31

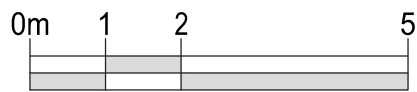
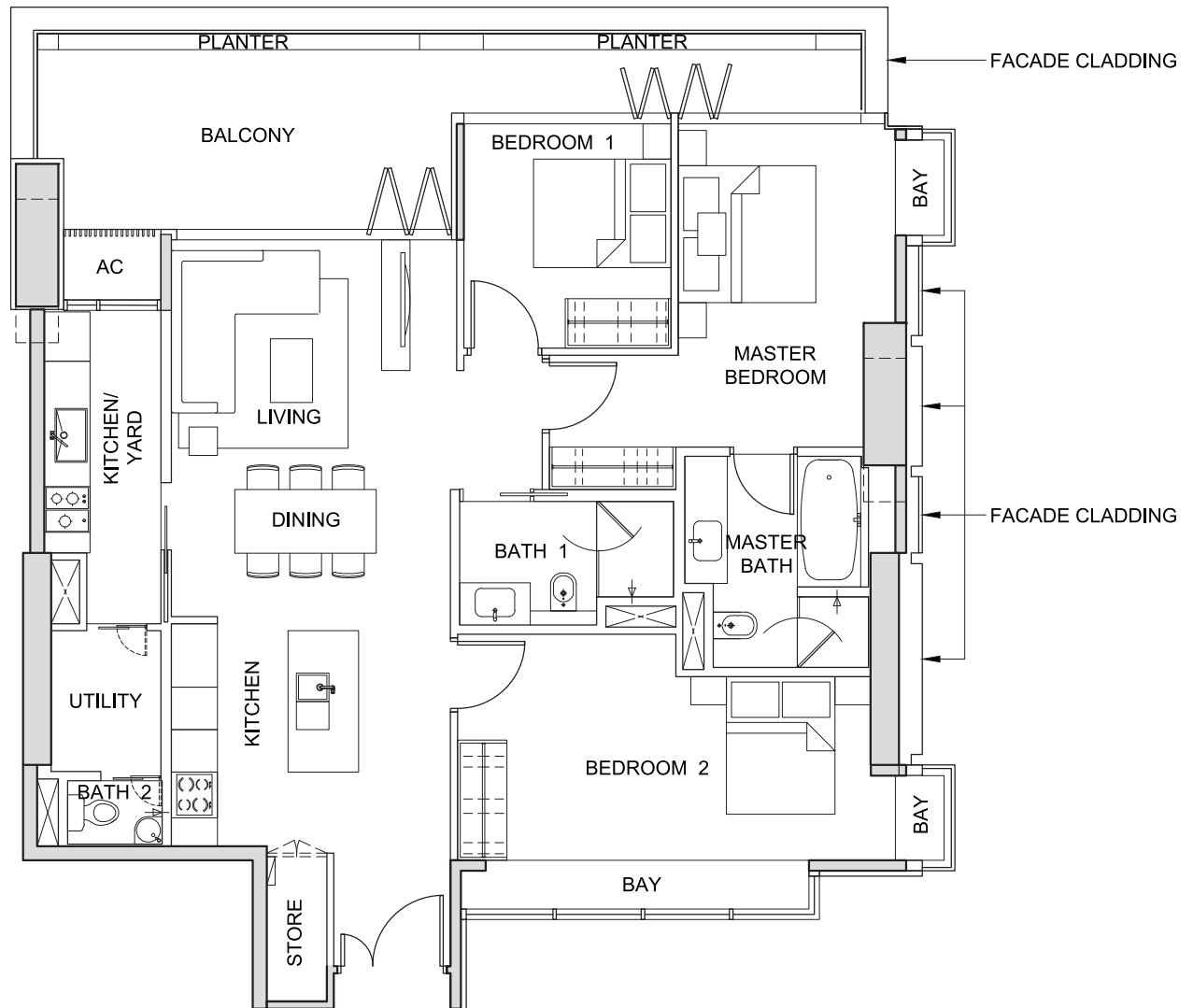
The above plans and illustrations are subject to change as may be required or approved by the relevant authorities. All measurements are estimates only and are subject to final survey.

TYPE 3G1

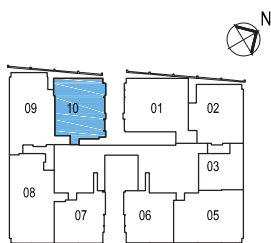
3-BEDROOM

(153 sq m / 1,647 sq ft)

#29-10



NOT TO SCALE



FOR LEVEL 29

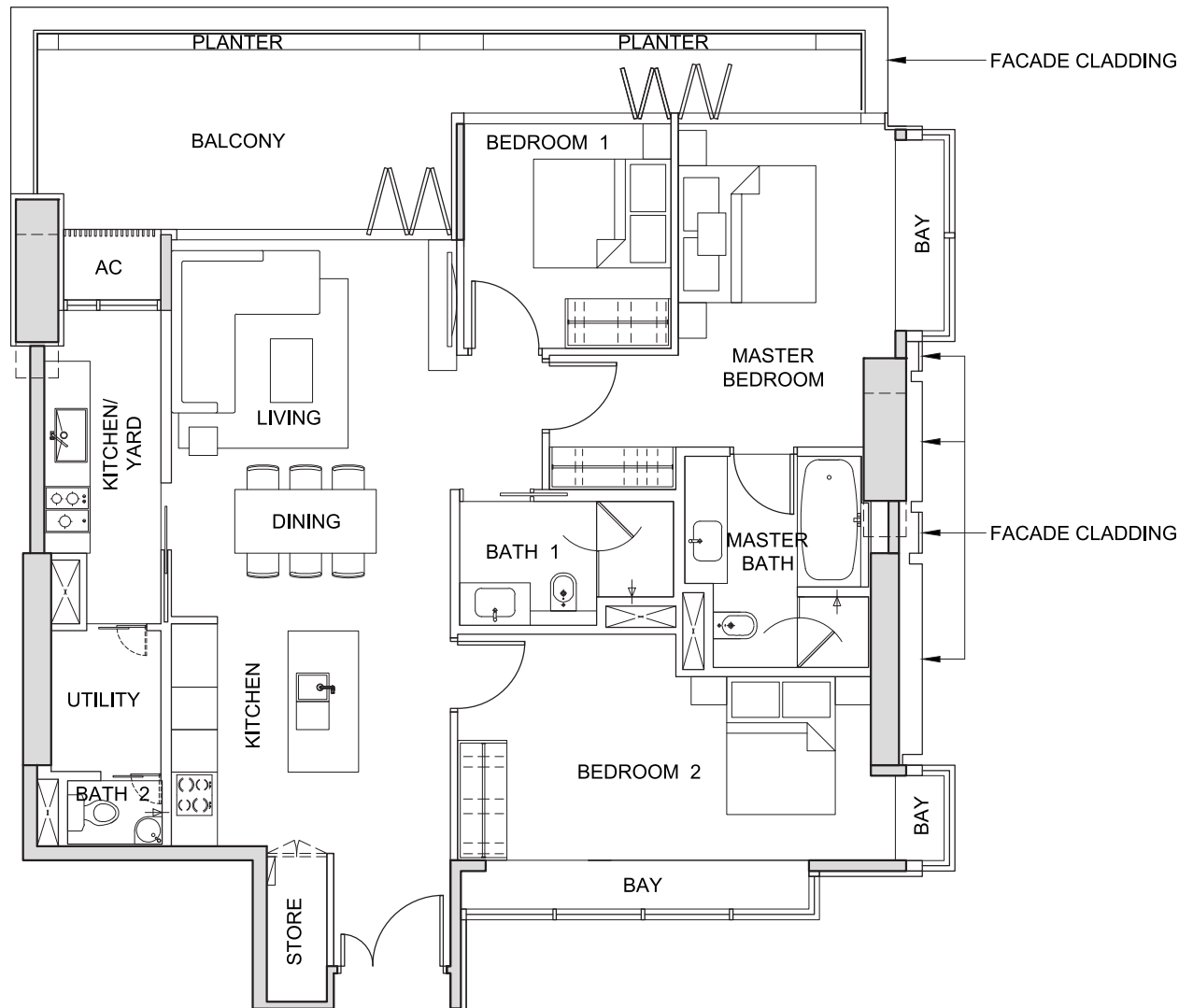
The above plans and illustrations are subject to change as may be required or approved by the relevant authorities. All measurements are estimates only and are subject to final survey.

TYPE 3G2

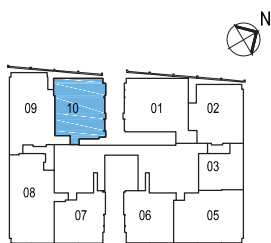
3-BEDROOM

(155 sq m / 1,668 sq ft)

#30-10



NOT TO SCALE



FOR LEVEL 30

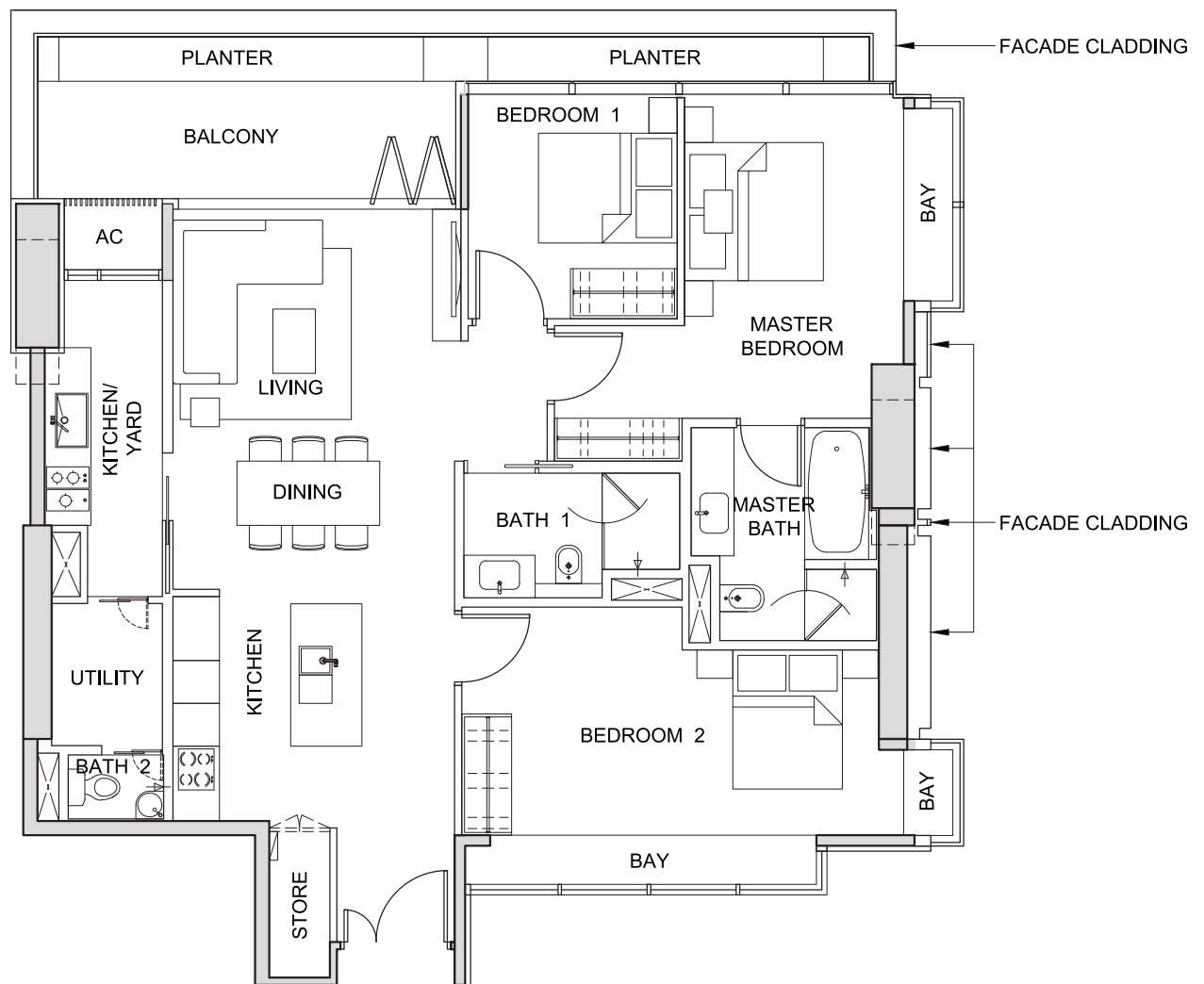
The above plans and illustrations are subject to change as may be required or approved by the relevant authorities. All measurements are estimates only and are subject to final survey.

TYPE 3G3

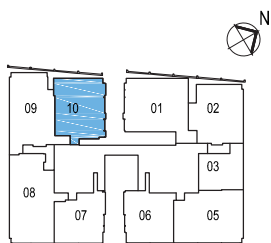
3-BEDROOM

(149 sq m / 1,604 sq ft)

#31-10



NOT TO SCALE



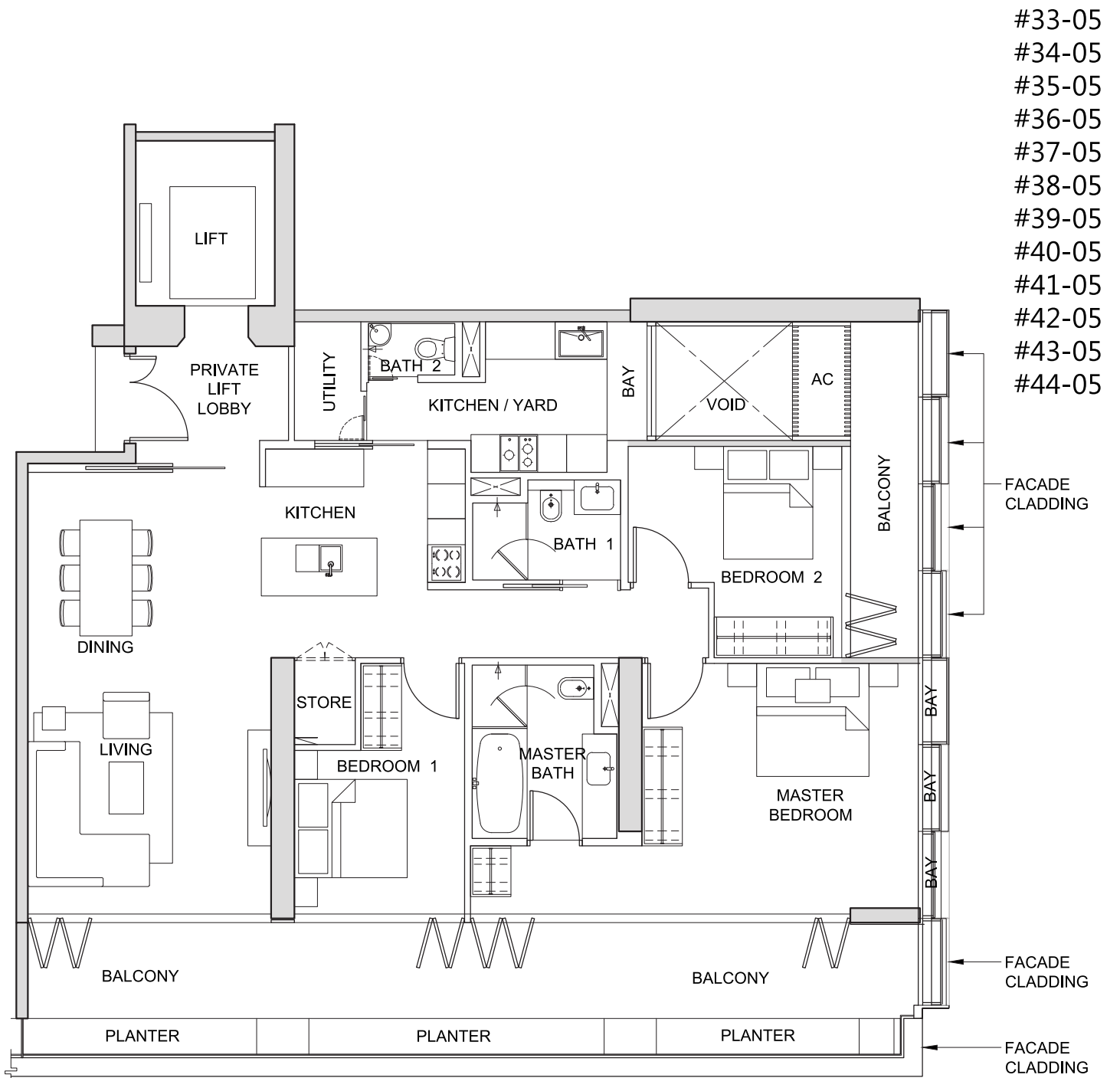
FOR LEVEL 31

The above plans and illustrations are subject to change as may be required or approved by the relevant authorities. All measurements are estimates only and are subject to final survey.

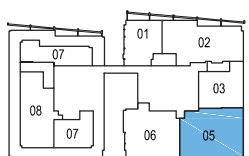
TYPE 3H1

3-BEDROOM

(195 sq m / 2,099 sq ft)



NOT TO SCALE



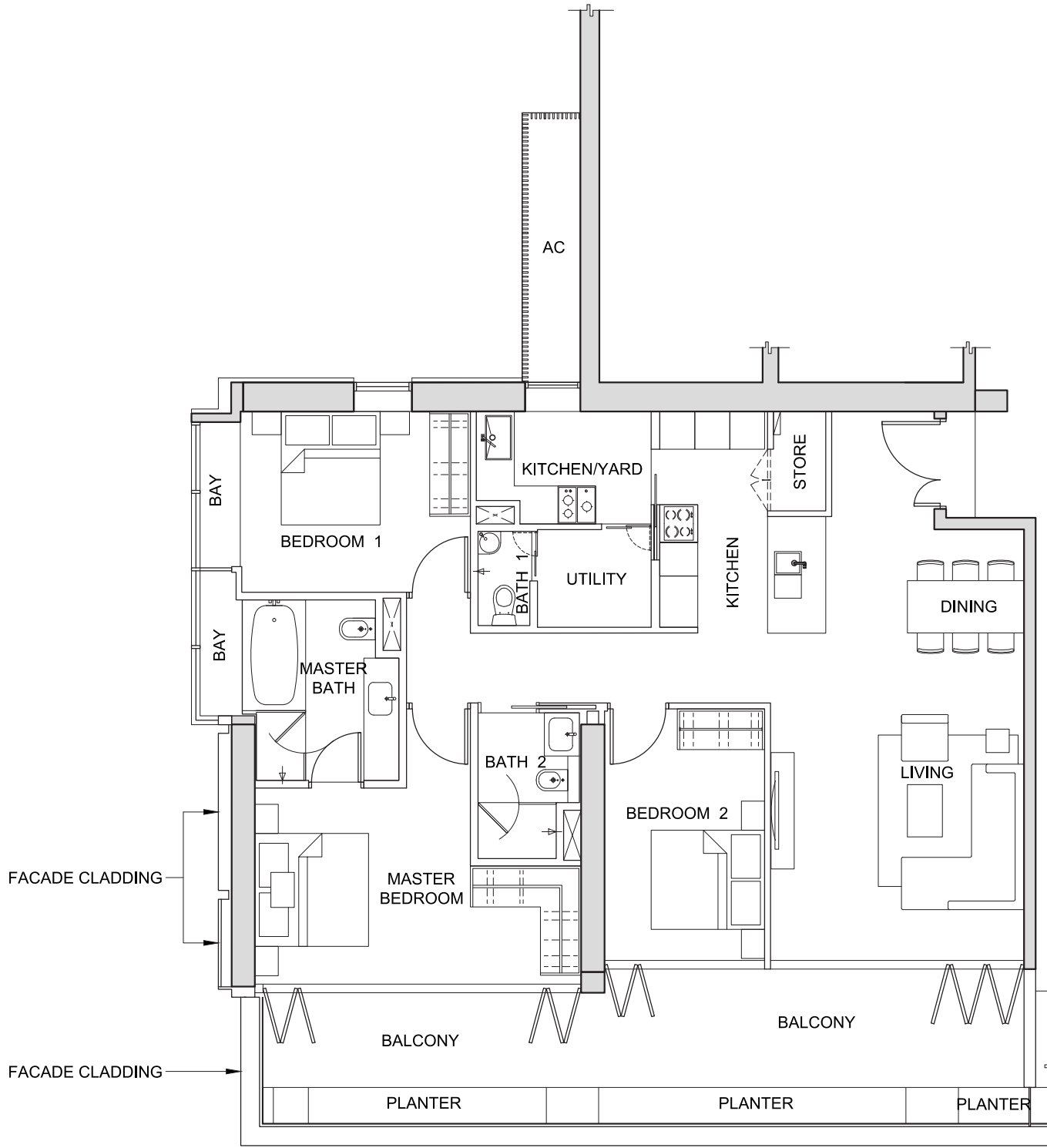
The above plans and illustrations are subject to change as may be required or approved by the relevant authorities. All measurements are estimates only and are subject to final survey.

TYPE 3J1

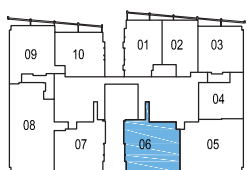
3-BEDROOM

(178 sq m / 1,916 sq ft)

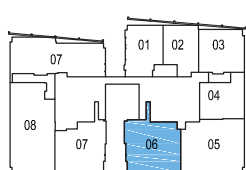
- #33-06
- #34-06
- #35-06
- #36-06
- #37-06
- #38-06
- #39-06
- #40-06
- #41-06
- #42-06
- #43-06



NOT TO SCALE



FOR LEVELS 33-40



FOR LEVELS 41-43



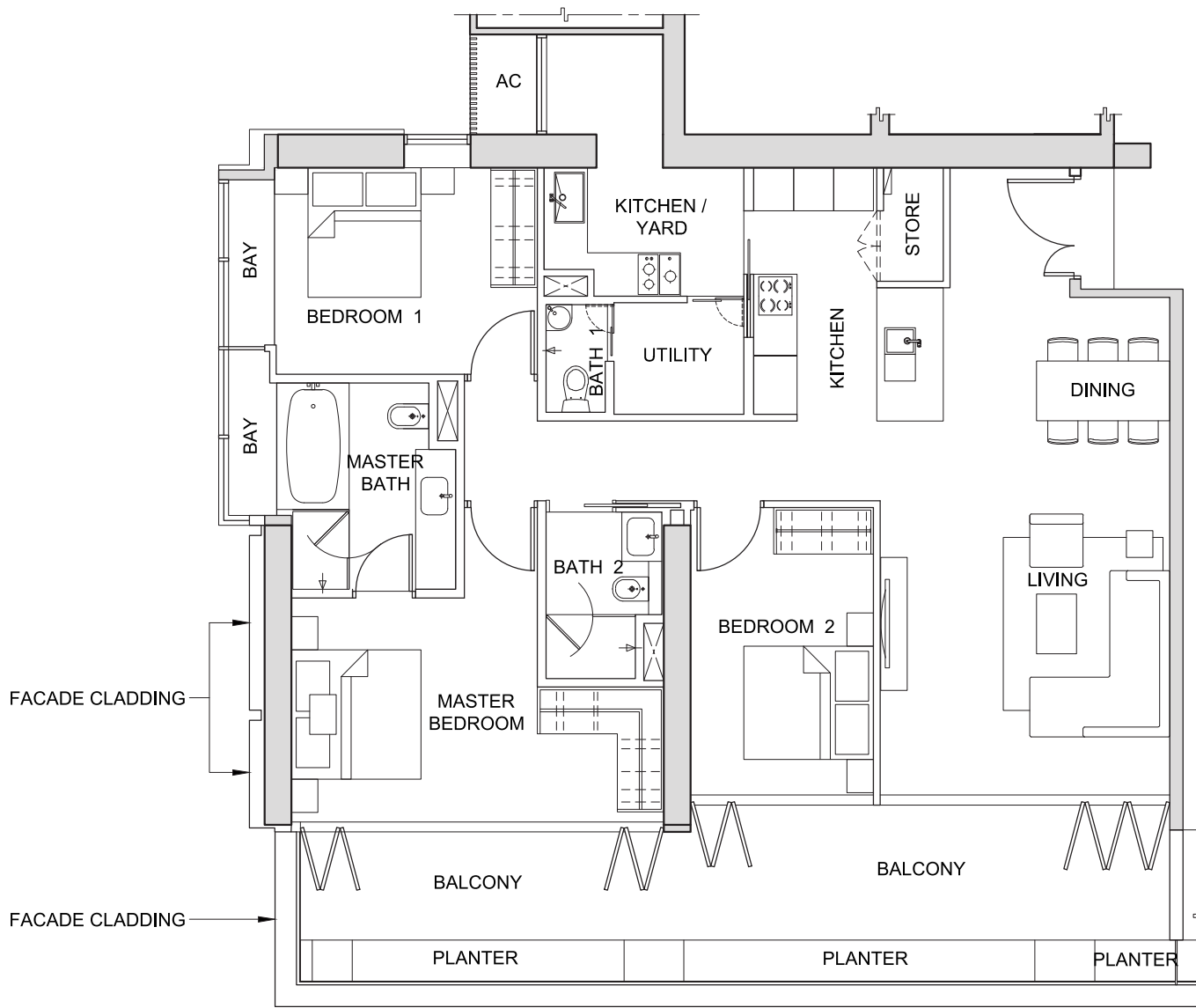
The above plans and illustrations are subject to change as may be required or approved by the relevant authorities. All measurements are estimates only and are subject to final survey.

TYPE 3J2

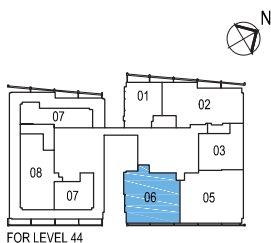
3-BEDROOM

(178 sq m / 1,916 sq ft)

#44-06



NOT TO SCALE



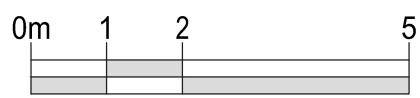
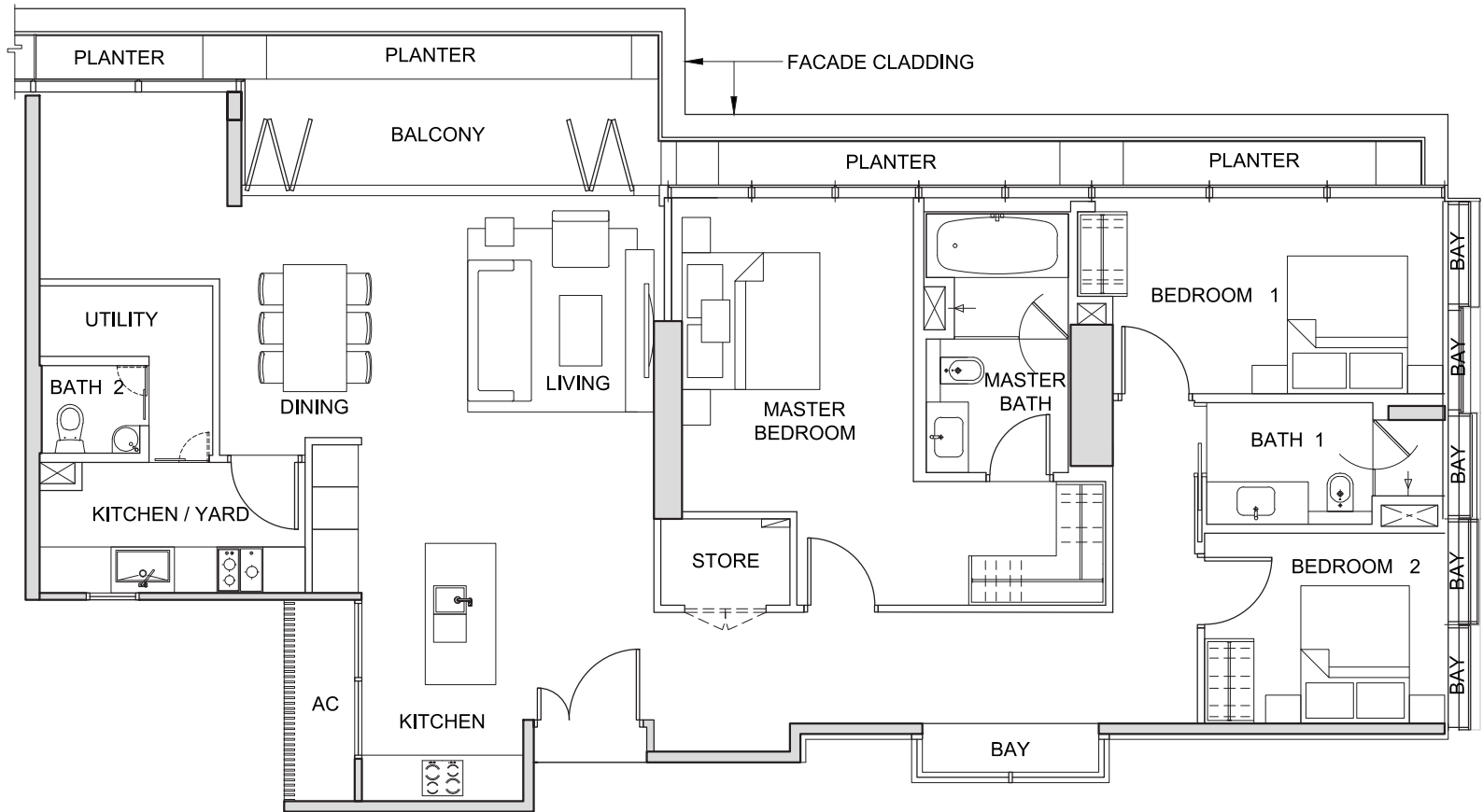
The above plans and illustrations are subject to change as may be required or approved by the relevant authorities. All measurements are estimates only and are subject to final survey.

TYPE 3K1

3-BEDROOM

(187 sq m / 2,013 sq ft)

#44-02



NOT TO SCALE



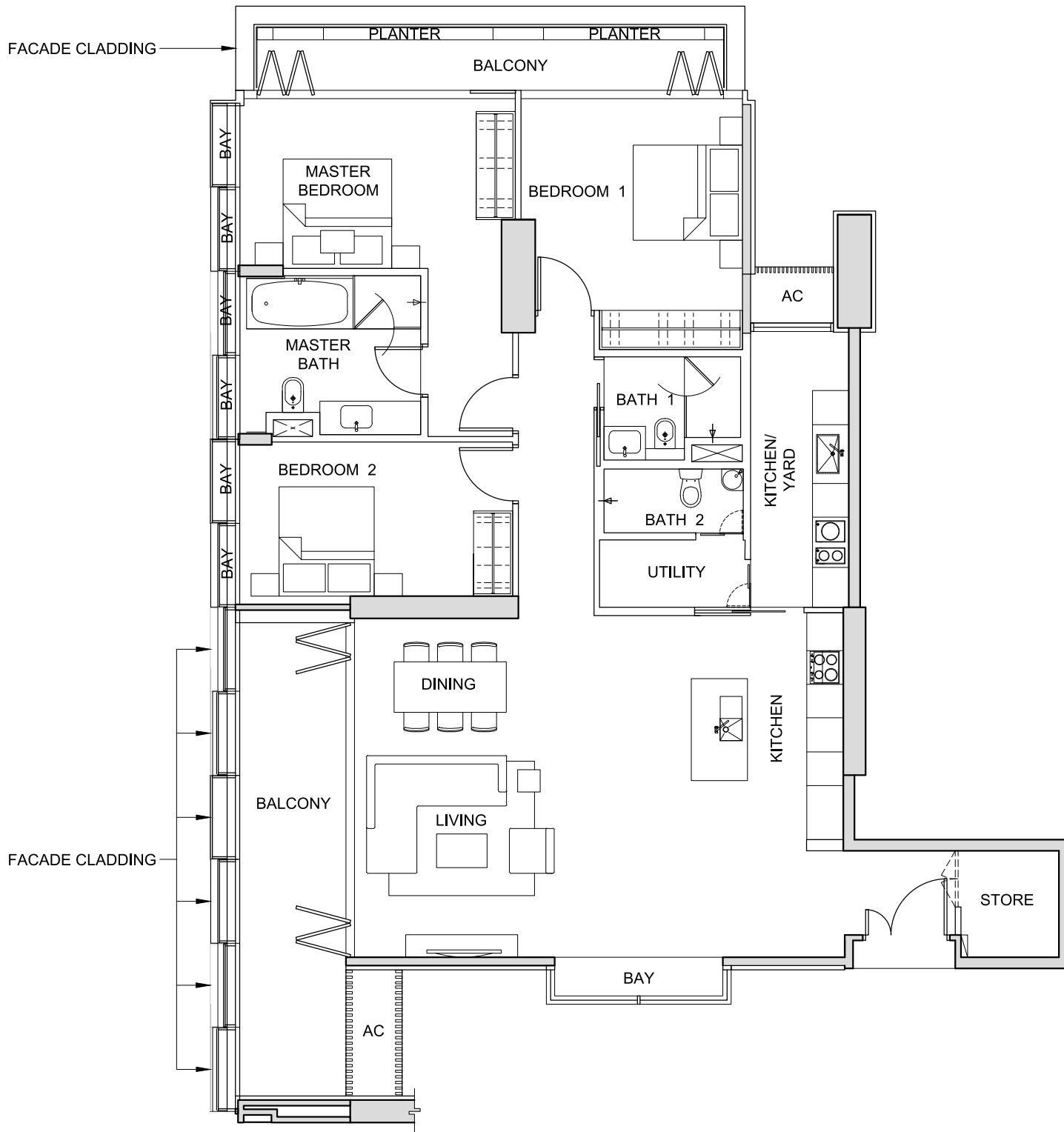
The above plans and illustrations are subject to change as may be required or approved by the relevant authorities. All measurements are estimates only and are subject to final survey.

TYPE 3L1

3-BEDROOM

(201 sq m / 2,164 sq ft)

#26-09



NOT TO SCALE



FOR LEVEL 26

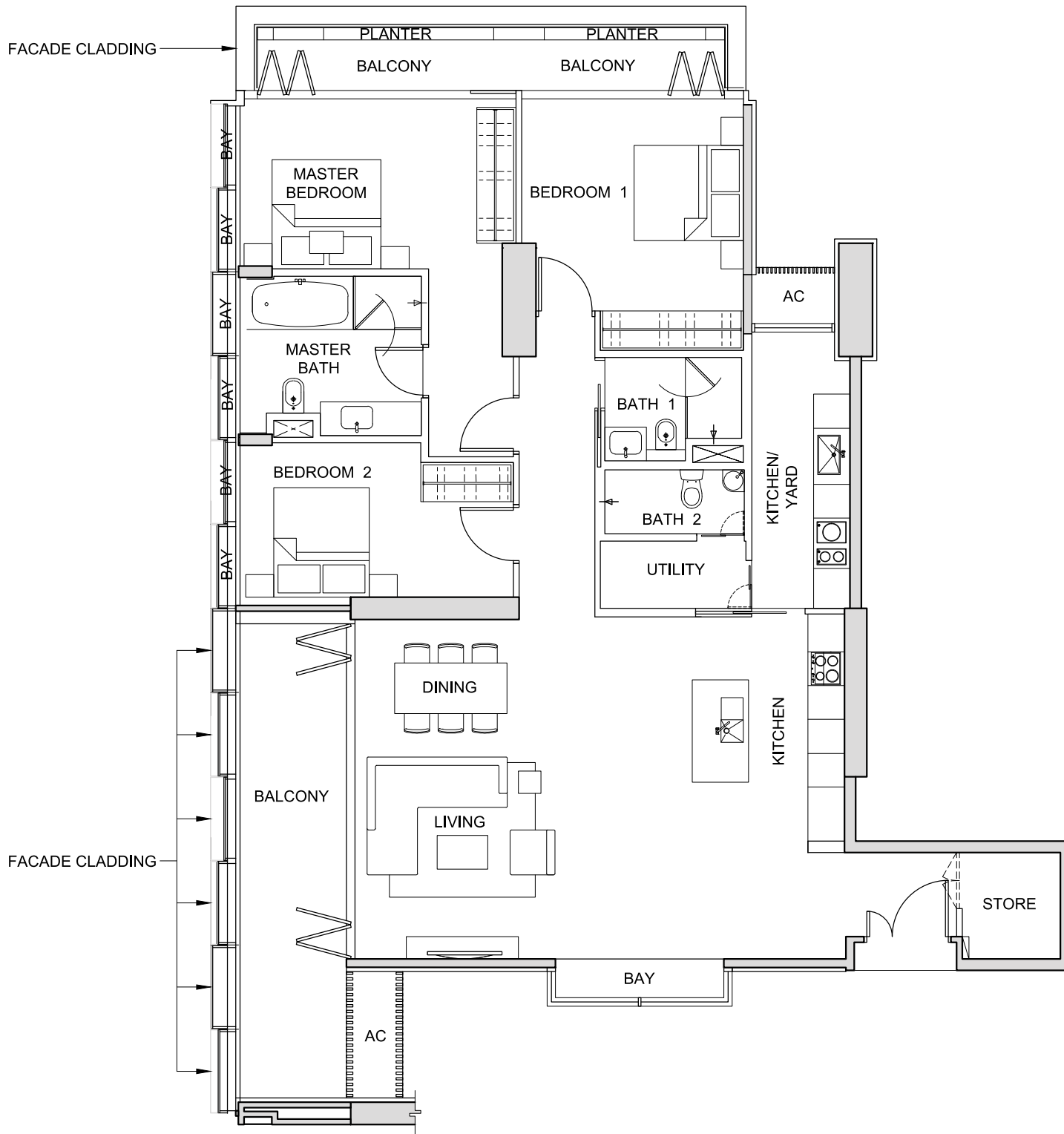
The above plans and illustrations are subject to change as may be required or approved by the relevant authorities. All measurements are estimates only and are subject to final survey.

TYPE 3L2

3-BEDROOM

(201 sq m / 2,164 sq ft)

#27-09



NOT TO SCALE



FOR LEVEL 27

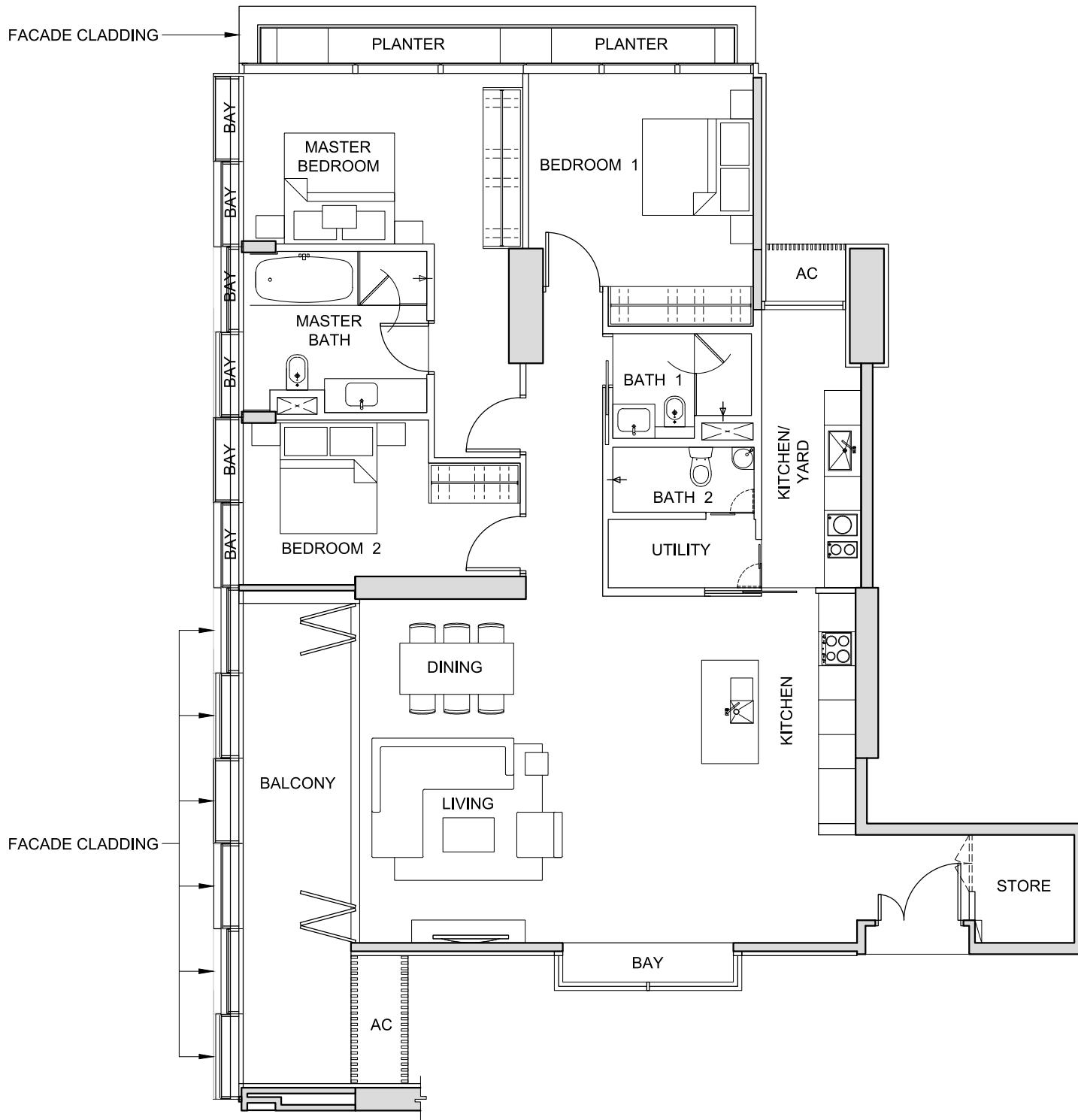
The above plans and illustrations are subject to change as may be required or approved by the relevant authorities. All measurements are estimates only and are subject to final survey.

TYPE 3L3

3-BEDROOM

(197 sq m / 2,121 sq ft)

#28-09



NOT TO SCALE



FOR LEVEL 28

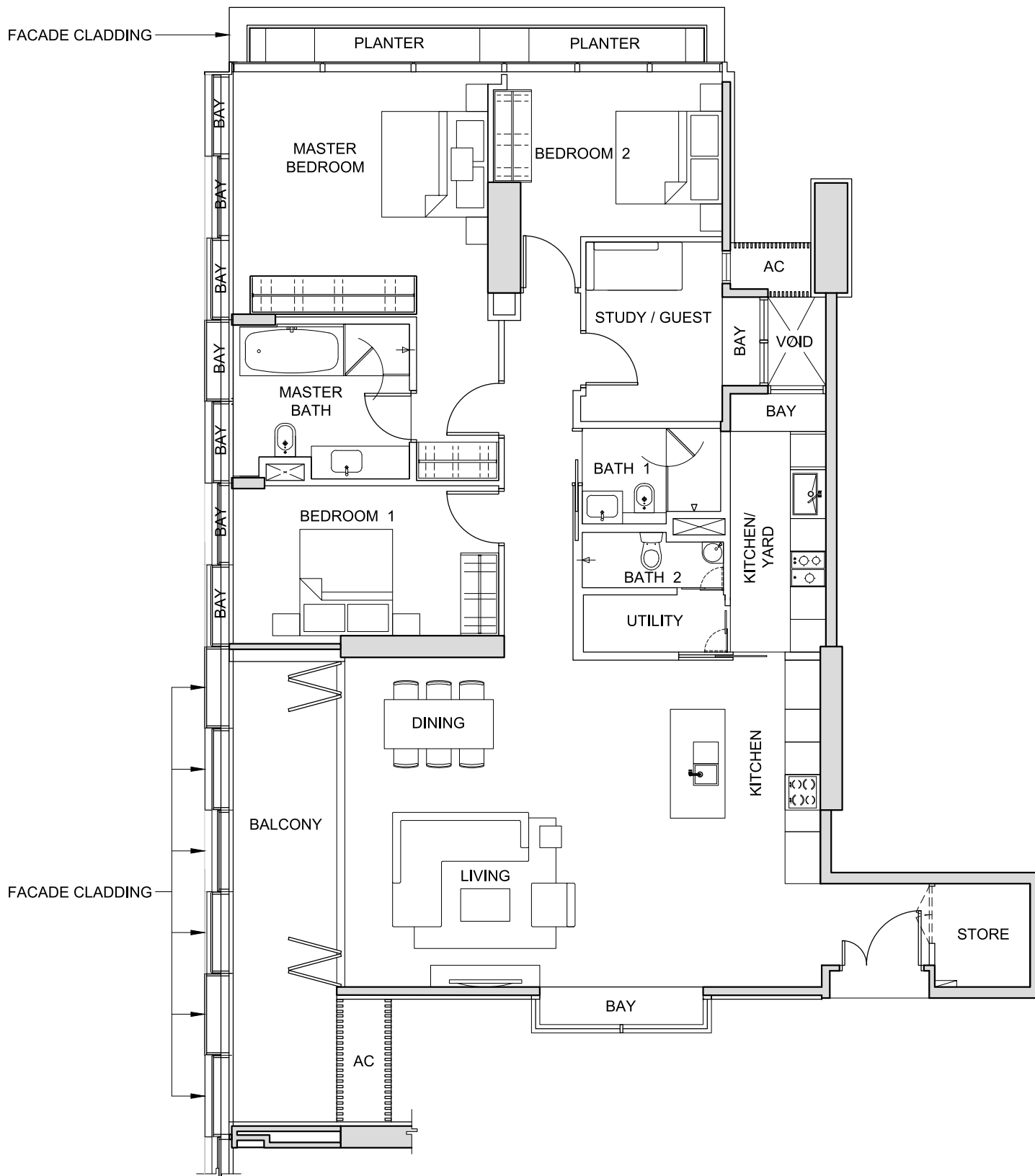
The above plans and illustrations are subject to change as may be required or approved by the relevant authorities. All measurements are estimates only and are subject to final survey.

TYPE 3M1

3-BEDROOM

(212 sq m / 2,282 sq ft)

#23-09



NOT TO SCALE



FOR LEVEL 23

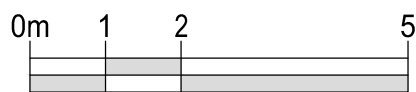
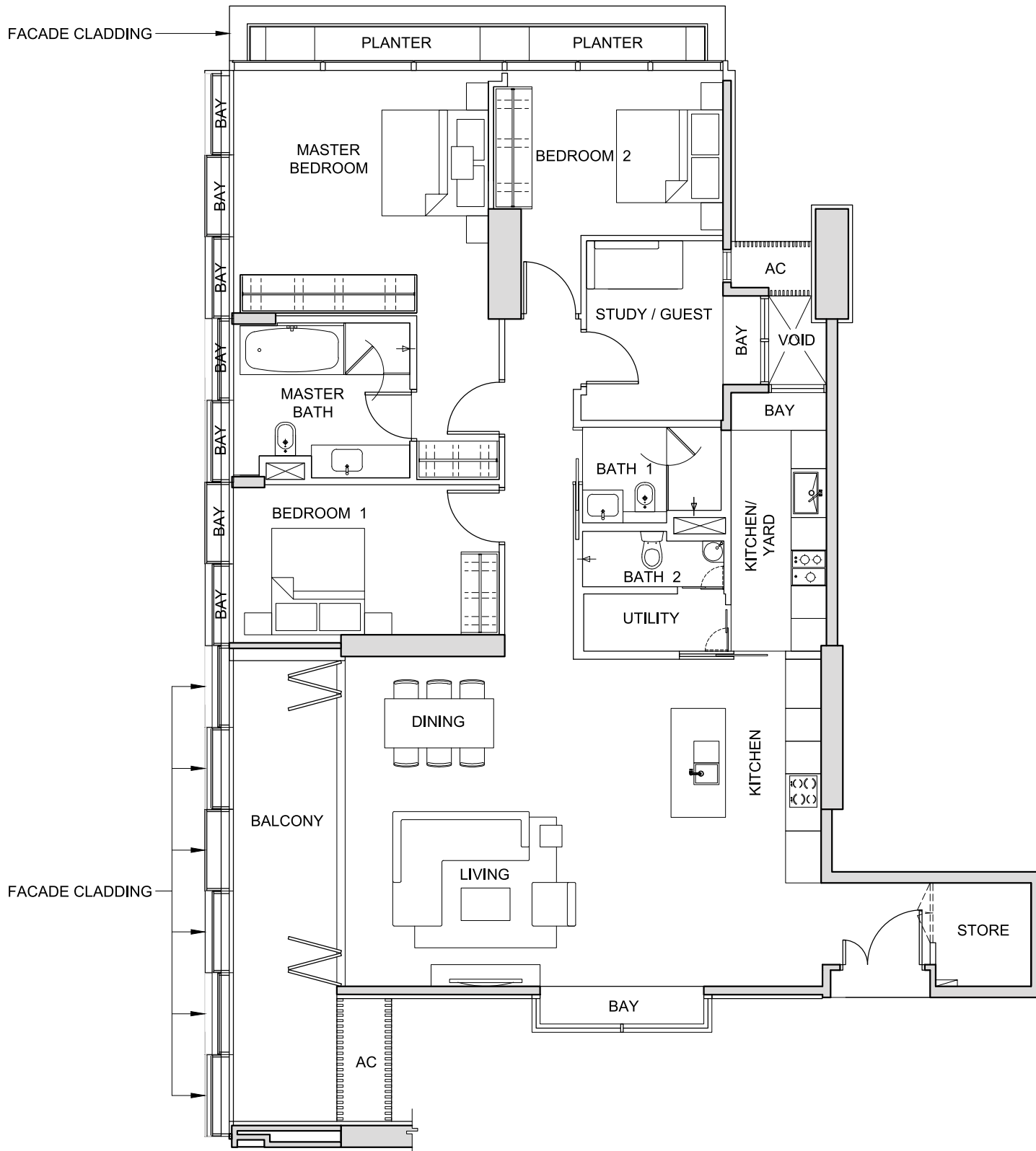
The above plans and illustrations are subject to change as may be required or approved by the relevant authorities. All measurements are estimates only and are subject to final survey.

TYPE 3M2

3-BEDROOM

(212 sq m / 2,282 sq ft)

#24-09



NOT TO SCALE



FOR LEVEL 24

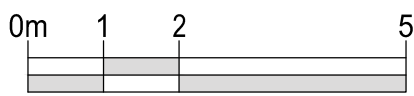
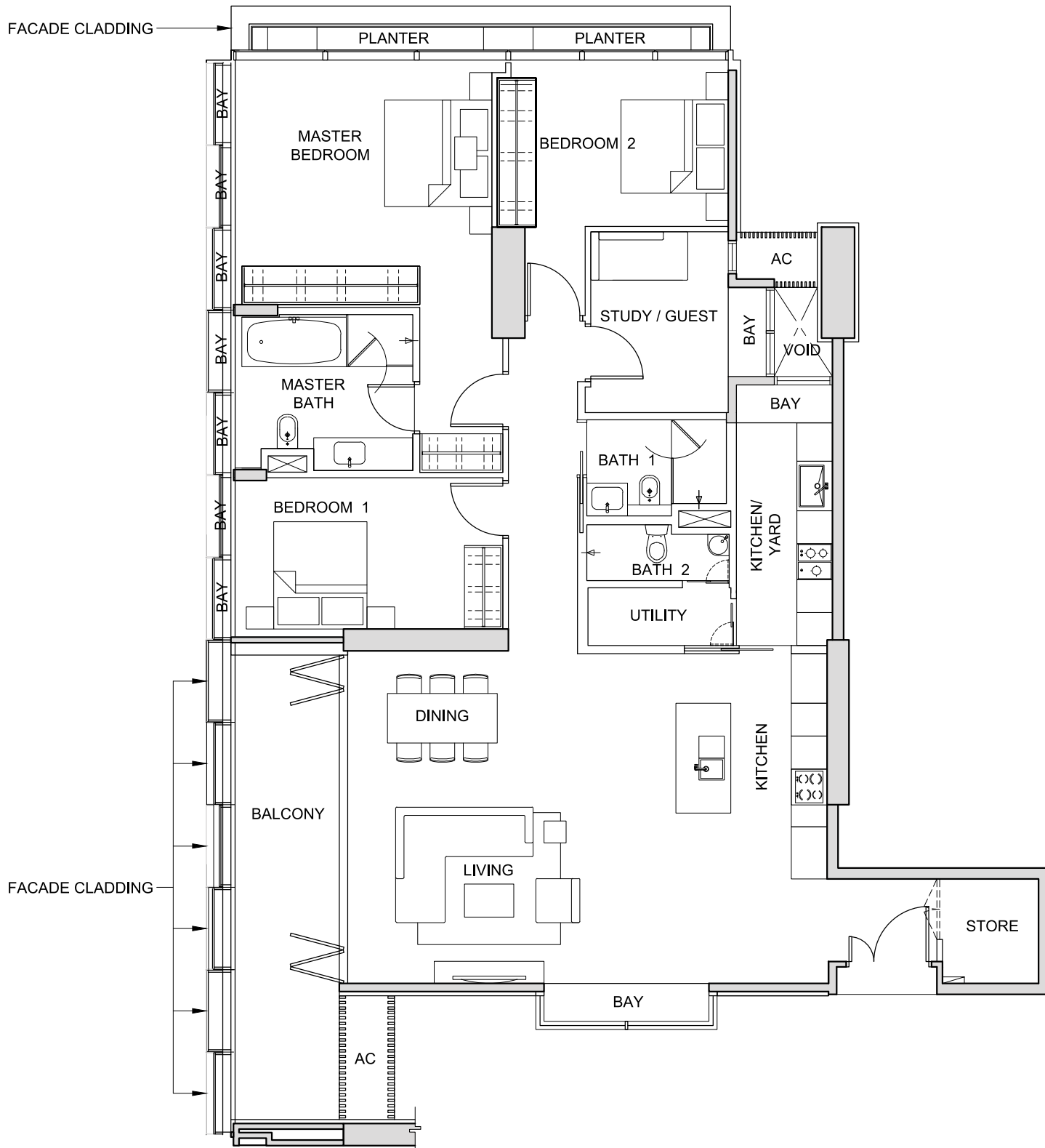
The above plans and illustrations are subject to change as may be required or approved by the relevant authorities. All measurements are estimates only and are subject to final survey.

TYPE 3M3

3-BEDROOM

(210 sq m / 2,260 sq ft)

#25-09



NOT TO SCALE



FOR LEVEL 25

The above plans and illustrations are subject to change as may be required or approved by the relevant authorities. All measurements are estimates only and are subject to final survey.

JOINTLY DEVELOPED BY



**CITY
DEVELOPMENTS
LIMITED**

SINGAPORE'S
TRUSTED PROPERTY
PIONEER
SINCE 1963



IOI PROPERTIES

MALAYSIA'S
LEADING
PROPERTY
DEVELOPER

While every reasonable care has been taken in preparing this plan, neither the Vendor nor its agents will be held responsible for any inaccuracies or omissions. This plan remains subject to any amendments (including such amendments required or approved by the relevant authorities). All statements are believed to be correct but are not to be regarded as statements or representations of fact. All information and specifications are current at the time of going to press and are subject to such changes as may be required by the Vendor. All areas and other measurements are approximate only and subject to final survey, and the Vendor does not warrant the accuracy of any of the measurements shown on this plan. The Vendor shall not be held liable for any claims, losses, expenses or otherwise whatsoever that may be suffered by purchasers as a result of purchasers' reliance on this plan. The Sale Contract embodies all the terms and conditions between the Vendor and the Purchaser and supersedes and cancels in all respects all previous representations, warranties, promises, inducements or statements of intention, whether written or oral made by the Vendor and/or its agents which are not embodied in the Sale Contract.