

OCVIBE™ Special Events

Made for Memories
Event spaces designed to inspire.



Learn more at ocvibe.com

Welcome to OCVIBE

A new destination created for entertainment and memories.

Envision extraordinary settings designed to elevate every occasion. At OCVIBE, iconic destinations like Honda Center, ARTIC, and Grove of Anaheim are evolving into something even greater — joined by a new concert hall, The Loft, Katella Commons, and Urban Park.

Across 100 vibrant acres, OCVIBE redefines what an entertainment district can be — blending energy, architecture, and experience into a setting built for celebration, connection, and lasting memories.





Table of Contents

Honda Center	6
ARTIC	13
Grove of Anaheim	18
The Loft	21
Concert Hall	24
Katella Commons	27
Urban Park	32

GROVE OF ANAHEIM
OPEN
 Two minutes away, this intimate 1,700-capacity venue sits near Angel Stadium hosting live music, comedy, and theater.

GOLDEN BEAR
PHASE II
 A legendary music and comedy venue, bringing the iconic spirit of Orange County nightlife back to center stage.

THE WEAWE
PHASE I
 Flexible workspaces feature fresh-air balconies and offer a seamless connection to Katella Commons and the district.

KATELLA COMMONS
PHASE I
 A chef-driven market hall featuring 21 kitchens plus six bars and lounges.

URBAN PARK
PHASE I
 The district's main gathering place.

CONCERT HALL
PHASE I
 A new 5,000-seat destination for live music and events.

ARTIC
OPEN
 Anaheim's central transit hub linking regional travelers directly to Honda Center and the heart of the OC VIBE district.

MEADOW PARK
PHASE III
 Designed for community events, picnics, and daily strolls along the Santa Ana River Trail.

PEDESTRIAN TRAIL
PHASE II PHASE III
 A three-mile immersive loop connecting art, wellness, and entertainment through rotating installations and events across the district.

HOTELS
PHASE II PHASE III
 Two on-site hotels will bring 500+ new rooms to Anaheim.

SOUTH PLAZA
PHASE II
 1.8-acre plaza connecting Honda Center and bridging over Katella Avenue to Meadow Park, Ball Road, and ARTIC.

HONDA CENTER
OPEN
 The iconic Honda Center continues to anchor world-class sports and entertainment events, with \$1B of enhancements to the guest experience to be completed in Phase II.

RESTAURANTS
PHASE I
 Award-winning chefs crafting exceptional restaurant experiences for unforgettable meals and refined gatherings.

THE LOFT
PHASE I
 Overlooking Urban Park, The Loft is a vibrant indoor-outdoor venue perfect for hosting high-energy social events.

PARKING
OPEN PHASE II
 Four thoughtfully designed garages, including Katella and Cerritos, are now open, with expanded parking and rideshare zones coming soon.

RESIDENTIAL + NEIGHBORHOOD PARK
PHASE II PHASE III
 Six residential buildings will introduce 2,000+ new homes to Anaheim.

KEY

- PHASE I Open 2025 - 2027
- PHASE II Open 2027 - 2028
- PHASE III Open 2029+



District Map

Neighborhood Map



Honda Center

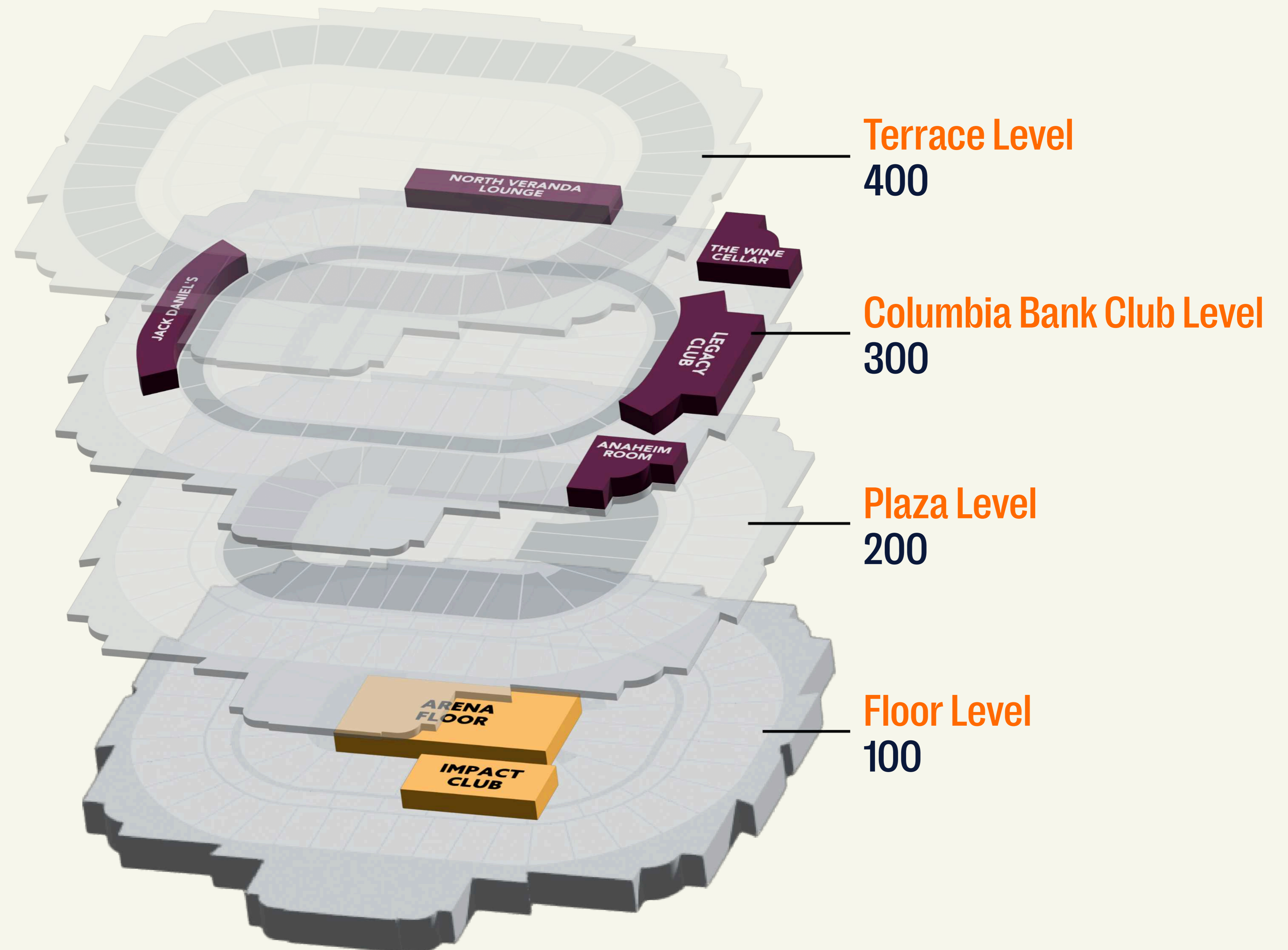
Home to the Anaheim Ducks, Honda Center is a premier West Coast arena annually hosting hundreds of top-name concerts, sporting events, and family shows.



Honda Center

Thrilling experiences found at every level, from taking the same floor as your favorite sports team to exclusive gatherings in private lounges.

- Professional level entertainment and AV capabilities
- Full service catering and mixology provided by our award-winning chefs to suit any reception, buffet, or seated engagement
- Indoor and outdoor spaces with a variety of themes customized to your vision





Full Venue

Reception 17,000

Take over the entire arena.

Transform Honda Center into a one-of-a-kind setting for your event. From commencements and corporate gatherings to large-scale celebrations, the arena offers the space, infrastructure, and flexibility to bring even the most ambitious visions to life.



Arena Floor

Reception 1,500 • Banquet 680

Step onto the arena floor, where history has been made on ice and on stage. Perfect for galas, concerts, private activations, or even skating, this fully customizable space lets you create an experience as bold, intimate, or spectacular as your vision.

Honda Center



Impact Club

Reception 250 • Banquet 160

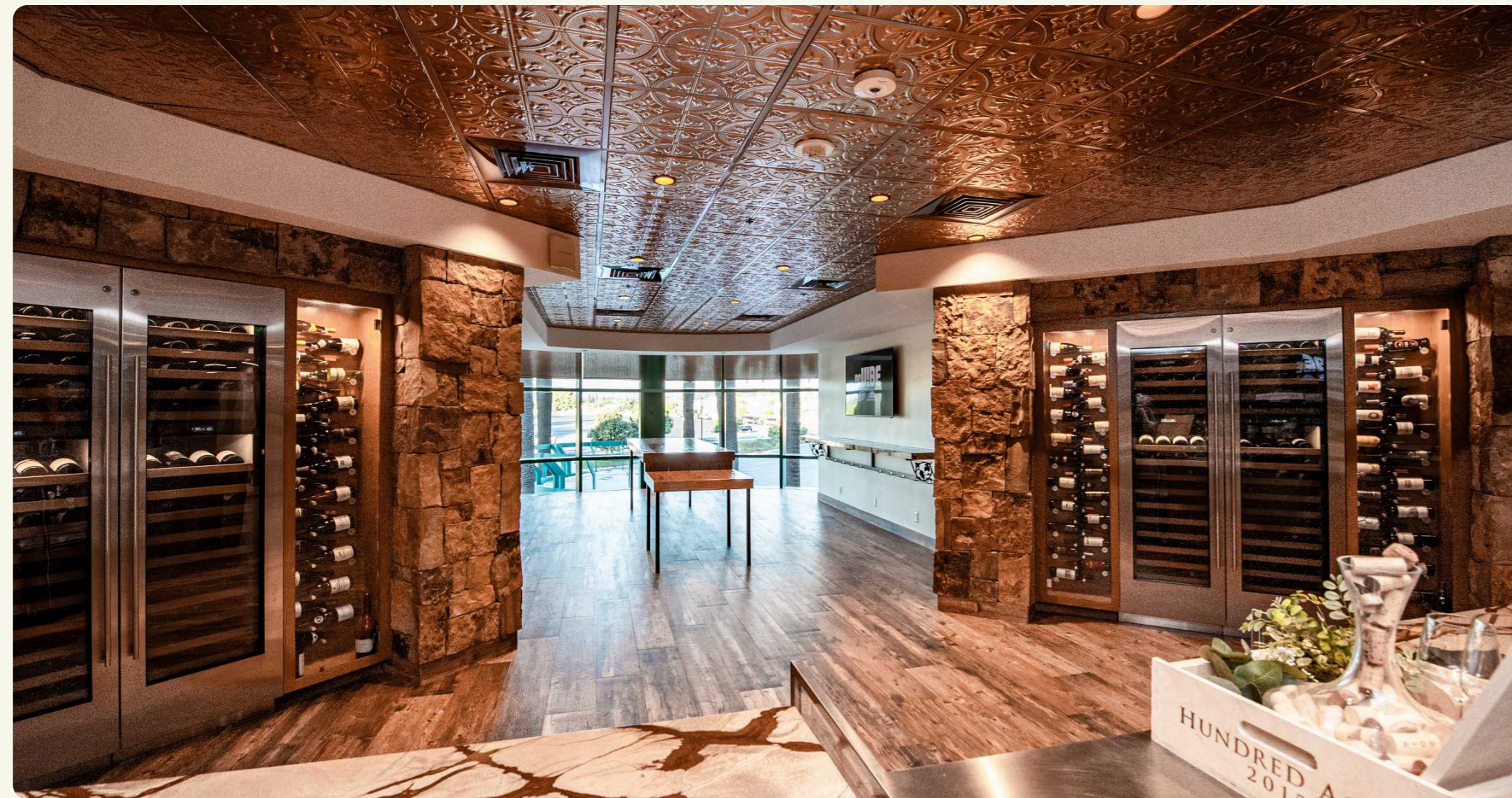
At more than 5,200-square-feet, Impact Club is the first and only ice-level VIP club space on the West Coast. This space carries legendary history as the Ducks' former locker room and home of the post-game champagne celebration after the 2007 Stanley Cup win. With a large bar, secluded lounge area with oversized booths, convertible dining room, numerous screens available for branding, and a private entrance, guests will have the opportunity to be entertained in one of the most unique spaces at Honda Center.



Jack Daniel's Old No. 7 Club

Reception 250 • Banquet 150

Found on the Columbia Bank Club Level of Honda Center, Jack Daniel's Old No. 7 Club welcomes guests into the lively space with built-in bar, multiple TV screens and sound system, and open space to accommodate your event-specific needs. With unrivaled sightlines of the interior bowl of Honda Center, this club can be adapted to host social gatherings, cocktail parties, presentations, small performances, or more intimate retreats when the retractable curtains are closed.



The Wine Cellar

Reception 50 • Banquet 25

The Wine Cellar, preserved by Sub-Zero is the first dedicated wine bar at an entertainment venue in the United States. Including more than 240 different wines, the space is an ideal setting for high-end, intimate gatherings.



Anaheim Room

Reception 50 • Banquet 25

Get right to business in the Anaheim Room on the Columbia Bank Club Level, a space best utilized for agenda-focused meetings, conference breakout sessions, brainstorming and open discussions. The space allows for ongoing conversation with a large marble conference table, presentation television and sound system, and unique floor to ceiling windows overlooking River Road.

Honda Center



Legacy Club

Reception 190 • Seated 175

Bold, modern design meets direct views into the Honda Center arena bowl, connecting your event to the action. Cool blue tones, glass accents, and layered lighting create a space that flows from polished daytime receptions to elevated evening gatherings.

Perfect for VIP experiences, private dinners, and high-impact events, Legacy Club offers exclusivity and a perspective unlike anywhere else in the venue.



North Veranda Lounge

Reception 300 • Seated 65

Step into the North Veranda Lounge, a modern space designed for connection and conversation. With reflective surfaces, sleek textures, and soft, focused lighting, the lounge sets a sophisticated and intimate tone—ideal for private gatherings, cocktail receptions, or special events that deserve a memorable backdrop.

ARTIC

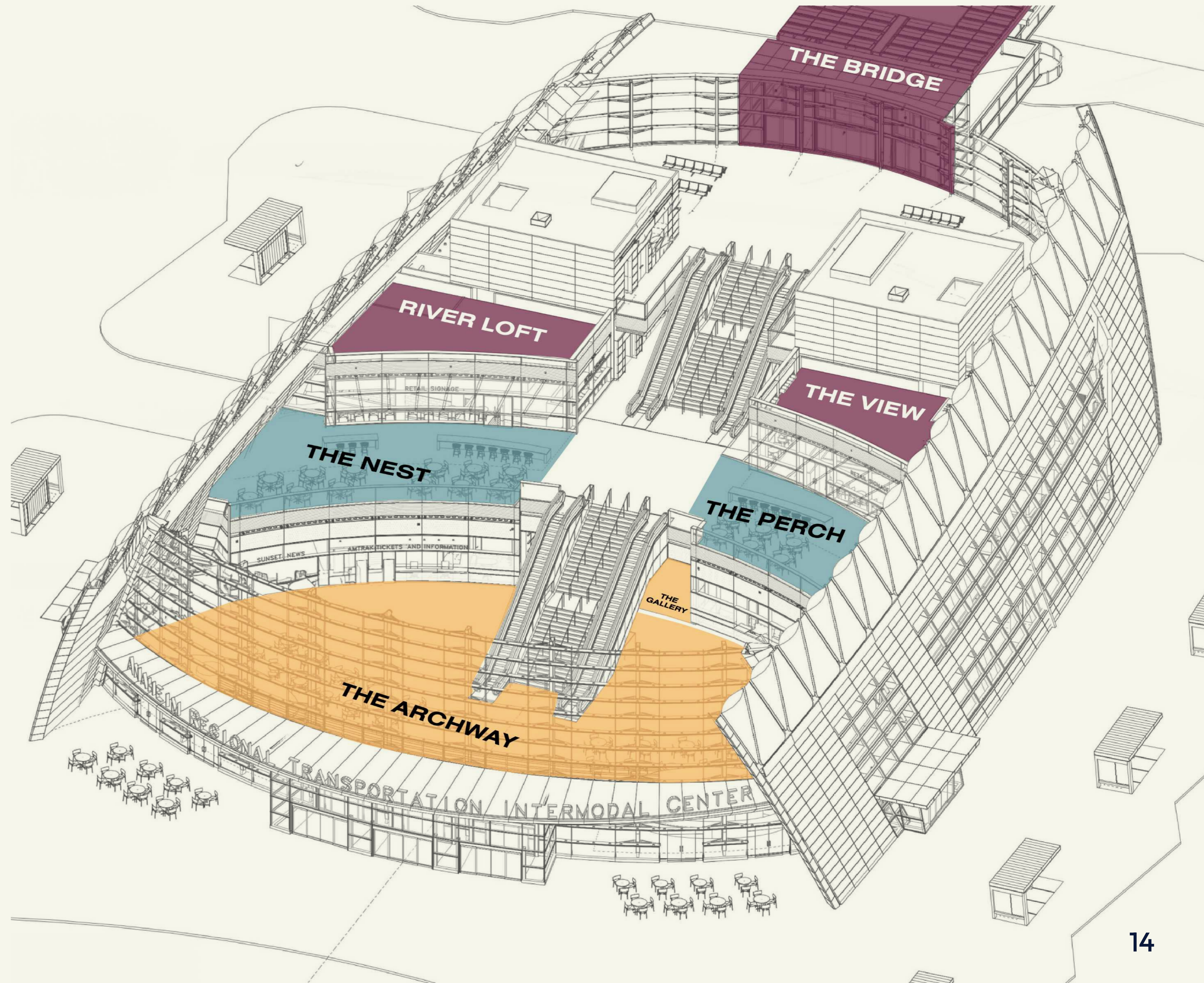
The Anaheim Regional Transportation Intermodal Center, better known as ARTIC, provides visitors and leisure travelers with connections reaching from San Luis Obispo to San Diego. ARTIC has become a well-identified structure in Orange County with its iconic design and stunning evening lighting that serves as a gorgeous backdrop for events ranging from film productions, awards ceremonies, casino nights, and even proms and formal dances.

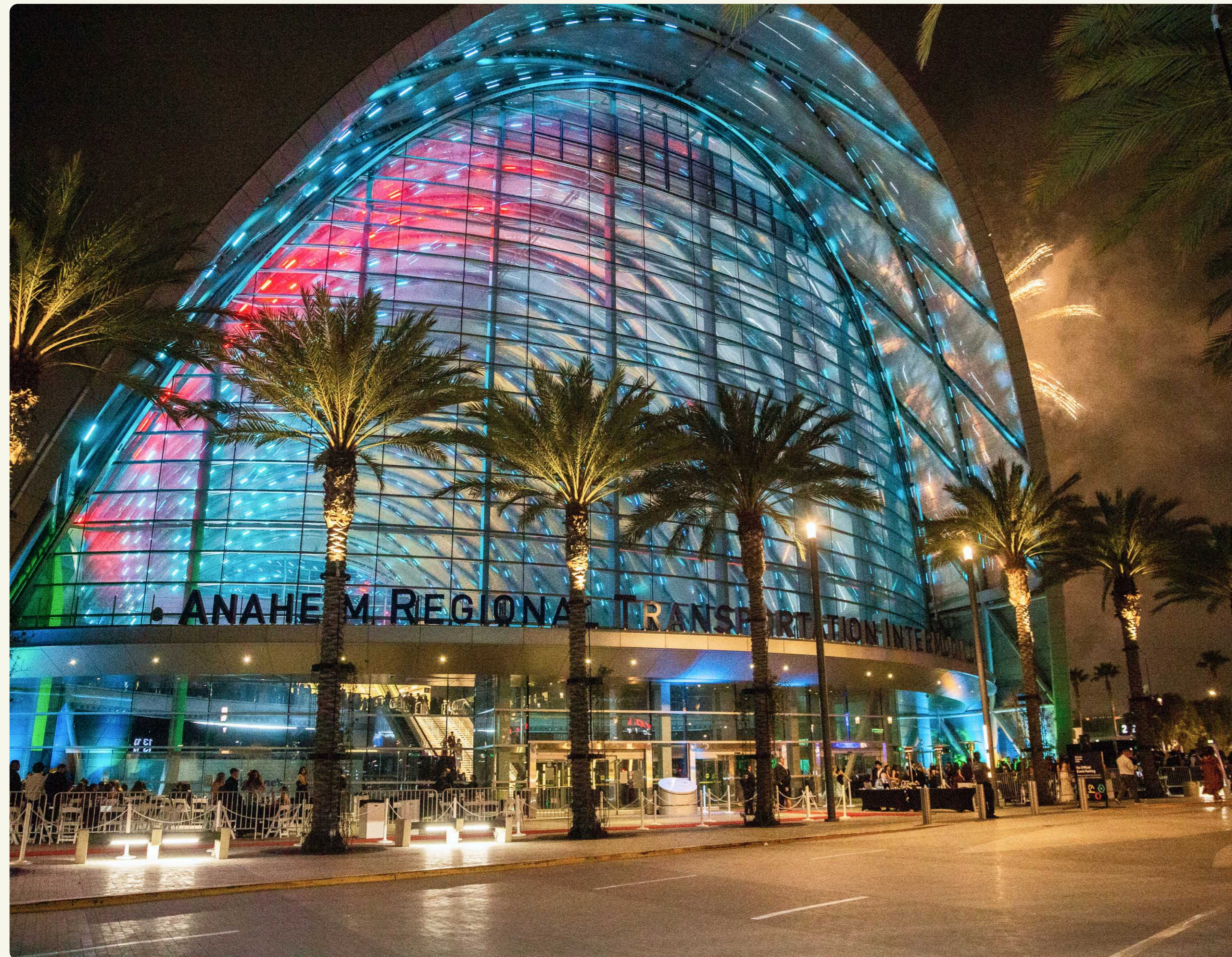


ARTIC

This iconic transport hub offers spaces for a wide variety of groups—from intimate cocktail parties to epic galas.

- Unique spaces to fit intimate gathers up to full venue takeovers
- Iconic filming locations with best-in-class venue management
- Full-service event planning, catering, AV, and entertainment support

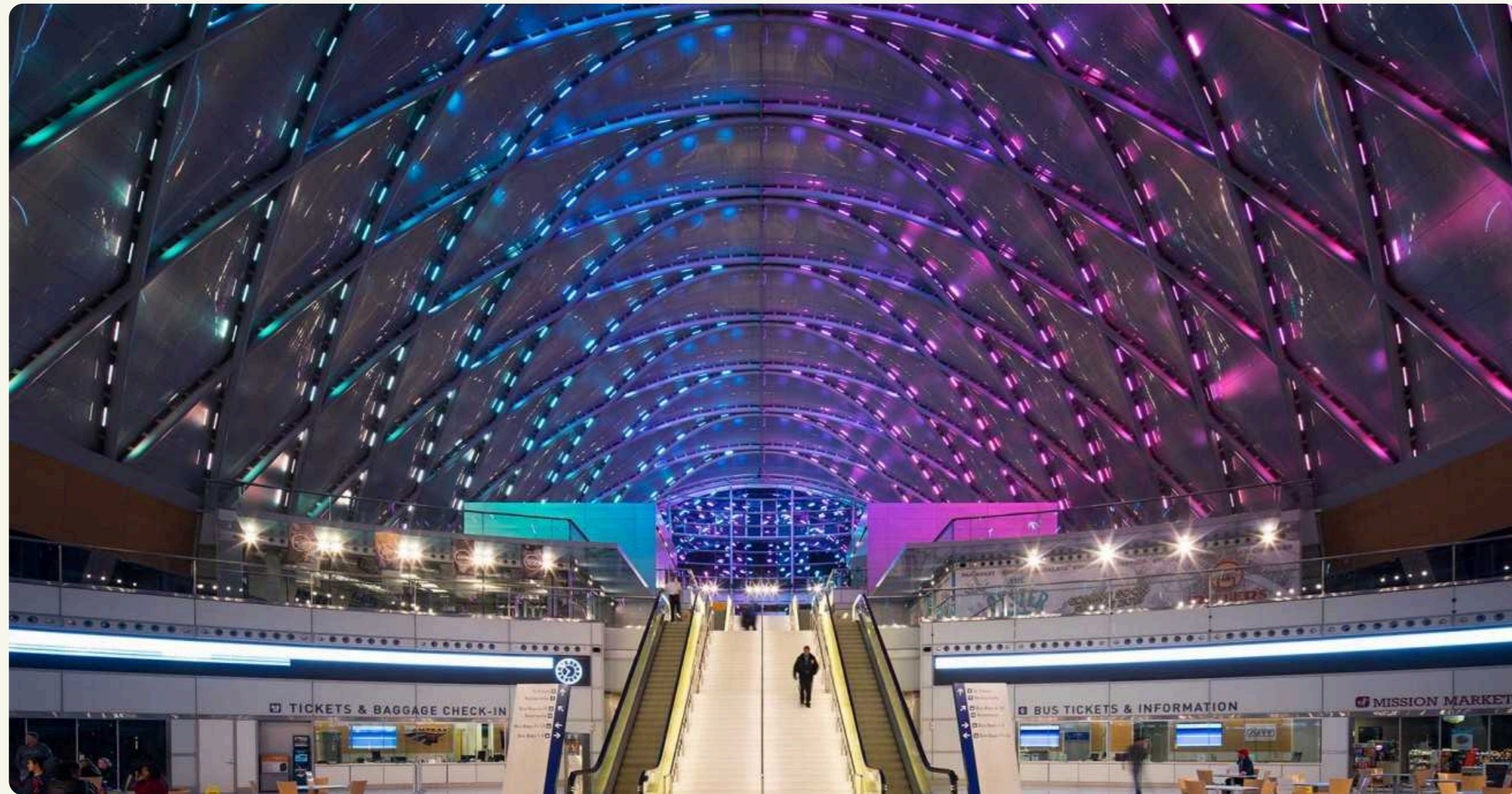




Full Venue

Reception 1,500 • Banquet 700

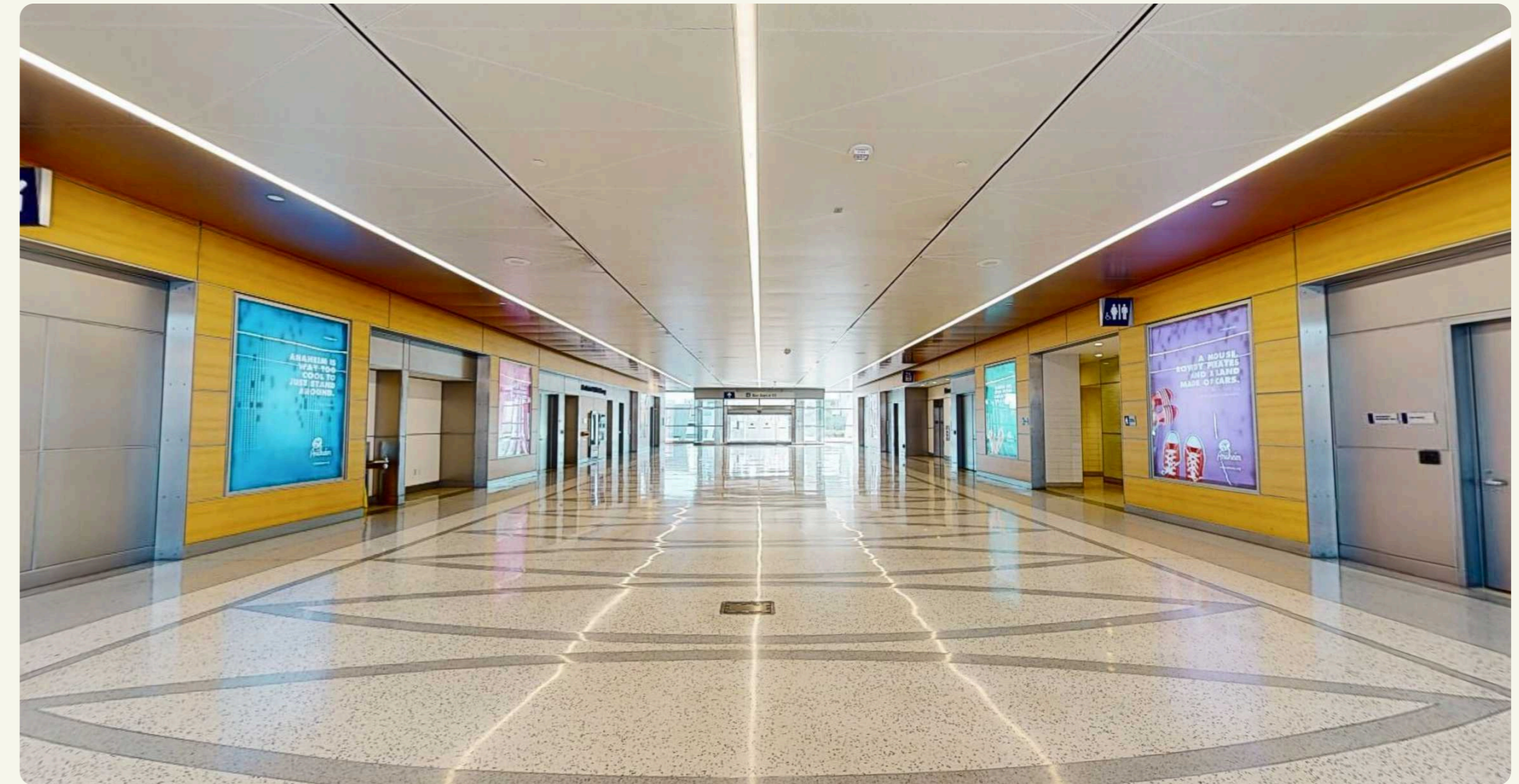
Located in the heart of Anaheim across the street from the historic Honda Center, the three-story, open-concept ARTIC venue has been the inspiration behind notable film shoots and private galas alike. This 68,000-square-foot, steel-framed terminal building is LEED Platinum & GBAC Certified, providing a sustainable and beautiful backdrop for any event.



The Archway

Reception 800 • Banquet 400

The Archway is the largest space at ARTIC for an event. Under distinctive state-of-the-art lighting, the Archway offers a modern atmosphere for a company banquet, reception and can function as a dance floor under one of Orange County's most architecturally-recognized structures.

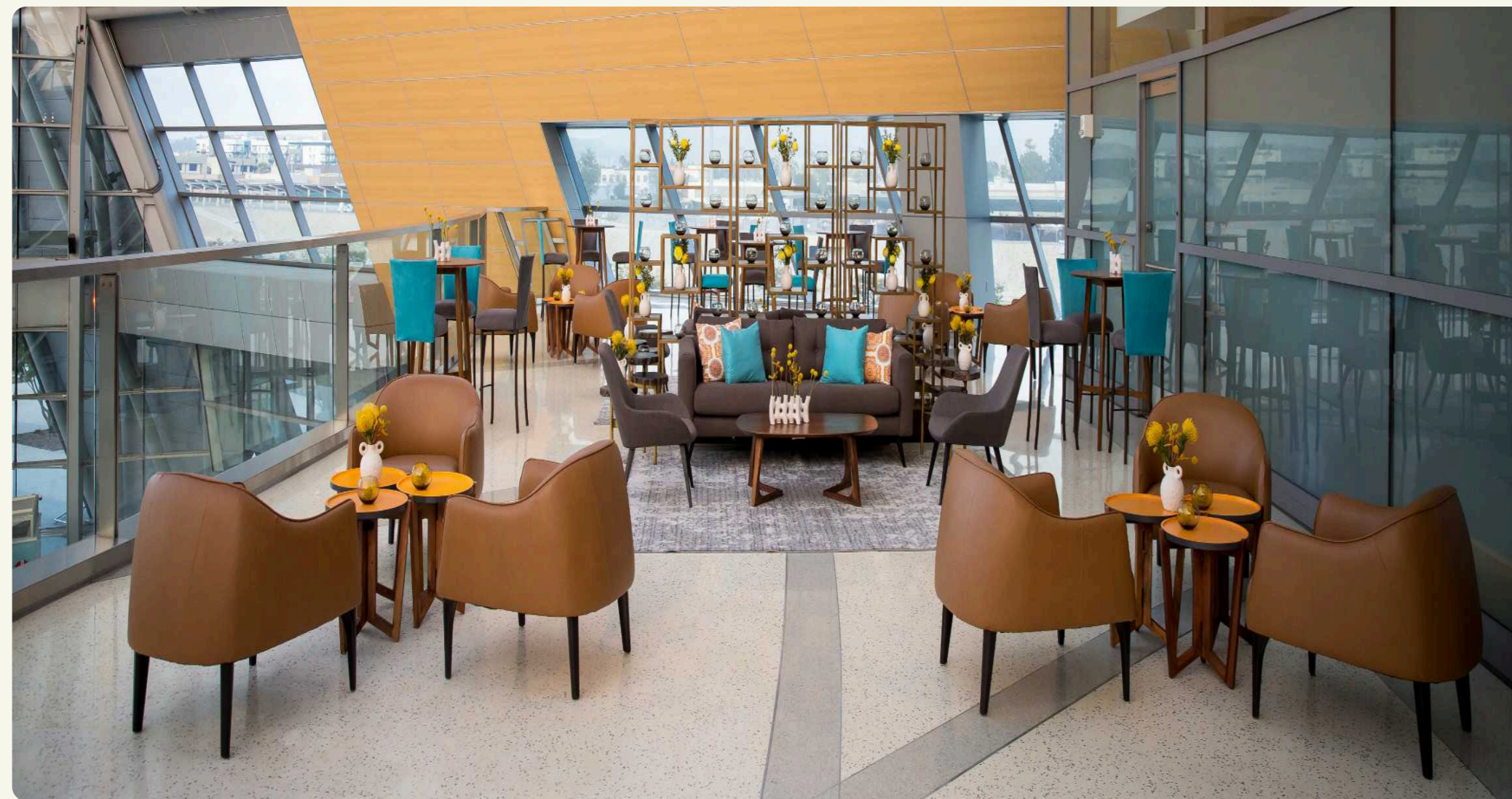


The Gallery

Reception 200 • Banquet 60

On the ground floor of ARTIC, The Gallery is an adaptable space that offers flexibility in the type of event that is hosted. Varying from an up-close and personal soirée to a relaxed evening festivity, The Gallery provides multiple options to accommodate different styles of intimate events.

ARTIC



The Perch

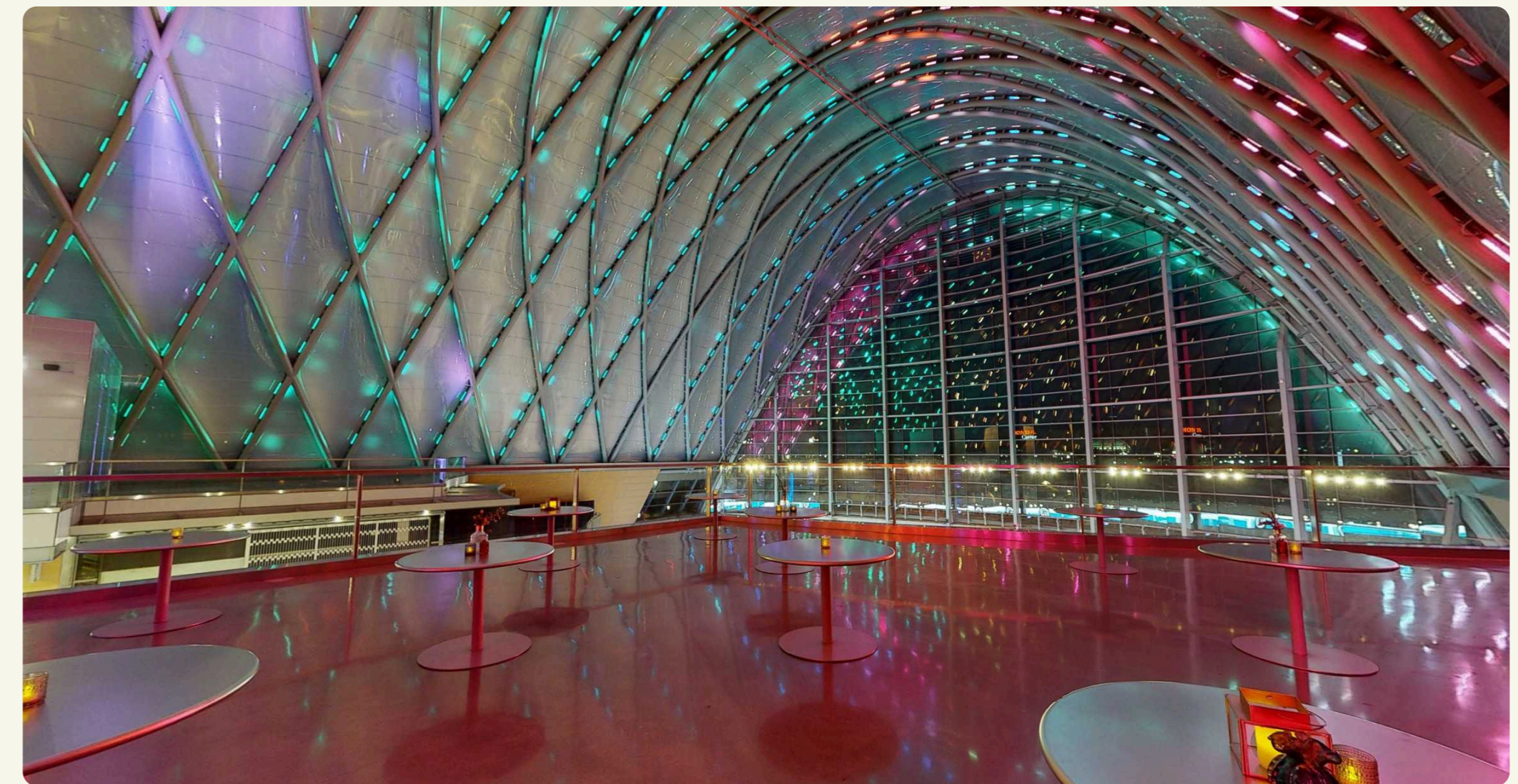
Reception 150 • Banquet 60

Overlooking The Archway, The Perch allows your event guests to take in the breathtaking view of ARTIC below and Honda Center across the street.

The Nest

Reception 150 • Banquet 50

Mirroring The Perch on the opposite side of ARTIC, The Nest offers the same versatile open patio deck and sweeping views—perfect for intimate gatherings, private receptions, or custom events.



The View

Reception 49 • Banquet 49

Situated on the top level of ARTIC, these mirrored upper decks combine privacy with gorgeous sightlines of Anaheim. River Loft or The View will offer a quaint and stylish elevated option for your event with exclusive entrances to each side.

River Loft

Reception 49 • Banquet 49

Grove of Anaheim

Located just adjacent to OCVIBE and Angel Stadium, the Grove of Anaheim is a premier private event and live music venue that provides unforgettable moments for your guests from spectacular entrances to gourmet dining and VIP treatment—all in a breathtaking setting.



Grove of Anaheim



Full Venue

Reception 1,700 • Banquet 700

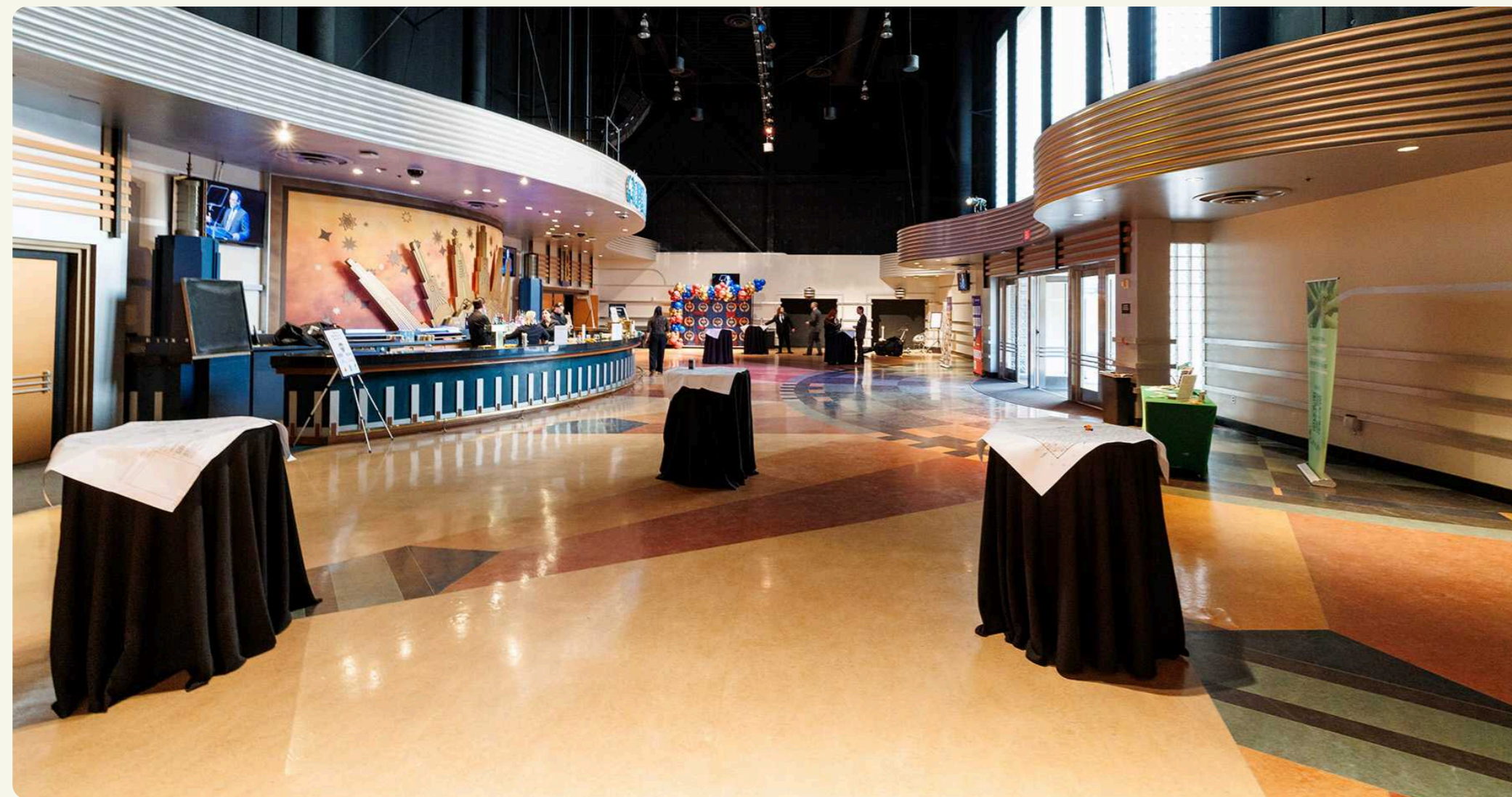
Enjoy full access to all spaces Grove of Anaheim has to offer. Inside, the main show room sets the stage for an event unlike any other with dramatic 40-foot ceilings, a multi-tiered layout and a stunning proscenium style stage. With flexible seating options, full service gourmet catering, and state-of-the-art sound, screens and lighting, Grove of Anaheim becomes more than an event space, it's an experience your guests will never forget.



Brewery X Biergarten

Reception 300 • Banquet 180

Give your guests a grand entrance under the towering palms of our landscaped courtyard. Brewery X Biergarten is the perfect setting for an outdoor reception, while a customizable marquee and curbside arrivals for VIP guests can create a true “red carpet” event.



Theater Lobby

Reception 400 • Banquet 120

The art deco-themed Theater Lobby is a throwback to the classic golden age of Hollywood, giving your guests a unique and ideal space to mingle, whether it's a pre-reception or a one-of-kind event.



Crystal Lounge

Reception 200 • Banquet 100

Sleek, stylish, and elegant, the Crystal Lounge features a dedicated custom bar and can serve as an exclusive VIP area or a standalone event space.

The Loft

Coming in 2027

Located on the second level and connected to Katella Common's Barrel Bar, The Loft offers a vibrant indoor-outdoor setting overlooking Urban Park—just steps from Honda Center and Katella Garage. With nearby full-service restaurants and easy guest access, it's ideal for receptions, banquets, and social-forward events that thrive on energy and connection.



The Loft



Full Venue

Reception 800 • Banquet 200

The Full The Loft combines indoor Lounge and outdoor Terrace spaces into one cohesive venue overlooking Urban Park. Ideal for receptions and banquets, this flexible setting offers natural flow, built-in energy, and a dynamic atmosphere—perfect for social gatherings, corporate events, and celebrations that benefit from room to move and connect.



Full Venue + Barrel Bar

Reception 950 • Banquet 300

Expanding The Loft to include Katella Common's Barrel Bar creates a high-energy, multi-zone experience with indoor-outdoor appeal. Guests can mingle, dine, and gather across connected spaces, making this configuration ideal for large receptions, branded events, and celebrations that thrive on movement, atmosphere, and elevated hospitality.

The Loft



The Lounge

Reception 400 • Banquet 80

Inside The Loft, The Lounge offers a stylish, indoor environment for curated receptions and seated gatherings. Its adaptable space and energetic yet controlled atmosphere make it perfect for social events, hosted experiences, and celebrations that benefit from a more intimate, indoor vibe.



The Terrace

Reception 400 • Banquet 120

Overlooking Urban Park, The Terrace provides a fresh, open-air backdrop for receptions and seated banquets. With the energy of the campus all around, it's an ideal setting for daytime events, evening socials, and gatherings that benefit from natural flow and ambiance.

Concert Hall

Coming in 2027

The sweet spot for sound and spectacle, the concert hall delivers state-of-the-art acoustics, lighting, and stagecraft in an intimate setting built for powerful, shared experiences.



Concert Hall



Full Venue

Reception 5,000 • Banquet 800

Unlock the concert hall in its entirety—main floor, balconies, bars, and lounges—for events that demand scale and spectacle. Ideal for award shows, large-scale corporate galas, and marquee celebrations, the full venue offers expansive circulation, multiple guest touchpoints, and a dynamic flow that elevates the entire experience from arrival to final encore.

Concert Hall



Floor

Reception 3,500 • Banquet 780

Floor delivers the power of the main stage in a more focused, connected setting. Designed for high-energy receptions, seated banquets, and corporate events, this space keeps every guest close to the action—creating a shared experience that feels immersive, intentional, and effortlessly polished.



Stretto Cafe

Reception 150 • Seated 100

Stretto Cafe is a covered outdoor space connected to the concert hall, overlooking the adjacent Urban Park. Available as an add-on when booking the full venue or the floor level, it's perfect for welcome receptions, cocktail hours, or post-event gatherings—keeping guests close to the action.

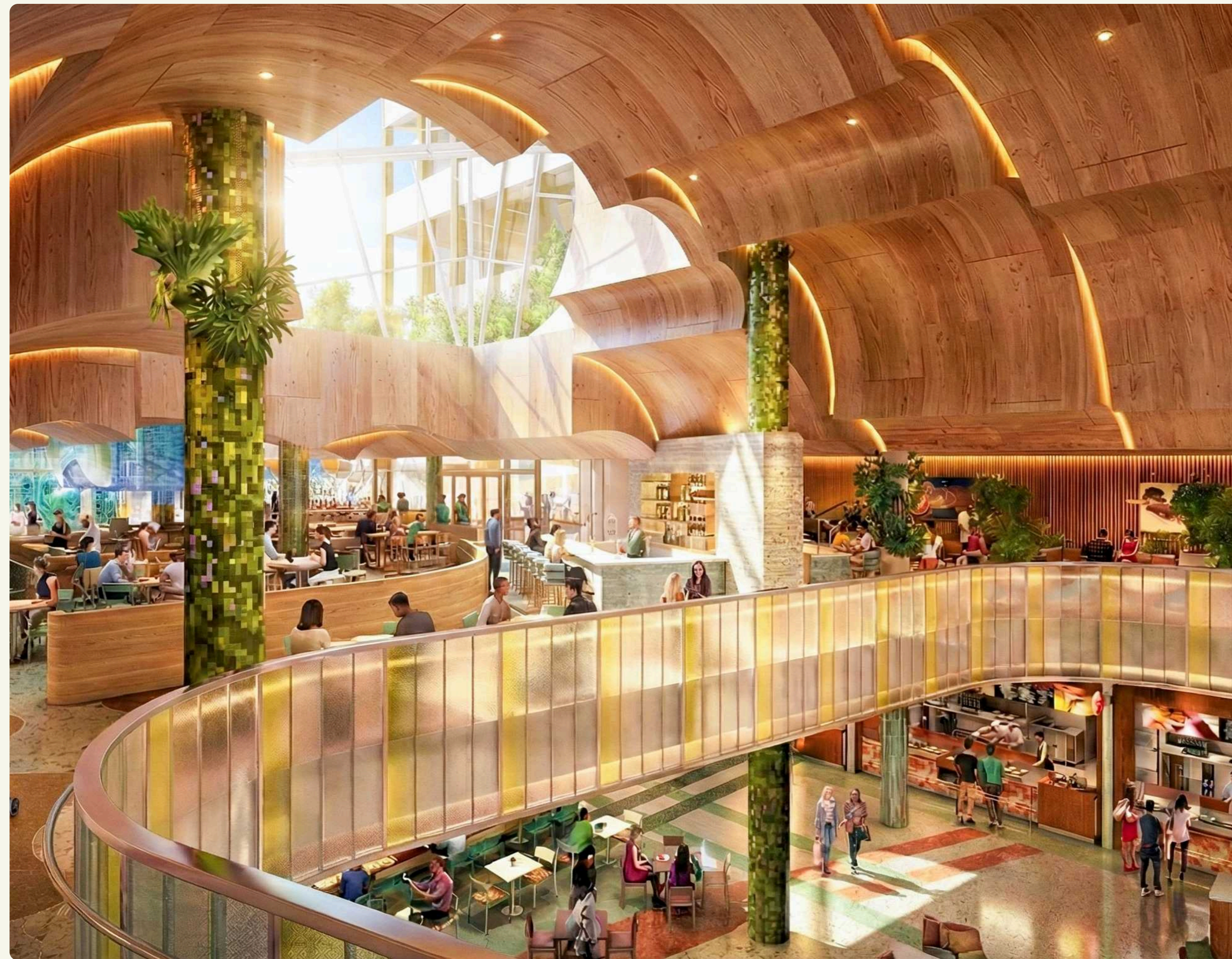
Katella Commons

Coming in 2027

Katella Commons is OCVIBE's dynamic culinary and social hub—an elevated, two-level destination featuring 21+ kitchens, 6 bars & lounges, and flexible gathering spaces. Designed for everything from full-venue buyouts to intimate receptions, Katella Commons offers planners a vibrant indoor/outdoor setting with built-in energy, diverse dining, and a truly customizable guest experience.



Katella Commons



Full Venue

Reception 2,000 • Seated 750

With both levels activated, Katella Commons becomes a vibrant, multi-zone event environment featuring diverse dining, multiple bars, and indoor-outdoor gathering spaces. Perfect for full-venue buyouts, this layout delivers energy, flexibility, and an elevated guest journey from arrival to last call.

Katella Commons



Ground Floor Buyout

Reception 900 • Seated 350

The ground floor of Katella Commons offers a vibrant, single-level experience ideal for receptions and seated events. With direct access to multiple food concepts and bars, this layout encourages natural flow, social interaction, and an engaging guest experience—perfect for brand activations, celebrations, and large-scale gatherings that thrive on movement and energy.



Bar Bacchia

Reception 125 • Seated 100

A moody, wine-cave-inspired cocktail and tasting bar rooted in ancient ritual. Featuring amaro-forward cocktails, curated wines, and intimate pop-up tastings, Bar Bacchia offers a distinctive setting for elevated gatherings and immersive event experiences.

Katella Commons



Second Level Patio

Reception 250 • Seated 120

Overlooking the energy below, the second-level patio provides an open-air setting ideal for receptions and seated events. With indoor-outdoor flexibility and a relaxed yet polished atmosphere, this space is perfect for social gatherings, cocktail receptions, and moments that benefit from fresh air and natural flow.



Barrel Bar

Reception 175 • Seated 100

A modern European café and bar serving spritzes, classic cocktails, beer, wine, and globally inspired small plates within a warm, versatile day-to-night atmosphere — ideal for hosting refined yet relaxed private event.

Katella Commons



Vesper Lounge

Reception 100 • Seated 50

Blending Japanese design with Scandinavian architecture, this refined Japandi-inspired cocktail lounge specializes in gin, martinis, spritzes, and botanical spirits, offering a calm, elegant atmosphere perfect for sophisticated private events and curated celebrations.

Urban Park

Coming in 2027

Located at the heart of OCVIBE, Urban Park is a vibrant open-air destination adjacent to Honda Center. Surrounded by Katella Commons and world-class dining, this expansive plaza delivers high-visibility, a strong sense of arrival, and the energy of high-traffic event days.



Urban Park



Full Venue

Reception 1,500

Designed for ultimate flexibility, Urban Park is the ideal setting for private buyouts, pop-up activations, and branded experiences. From large-scale receptions and concerts to live performances and community festivals, this central outdoor venue offers the versatility needed to create a truly custom event.

Overview of Spaces

OCVIBE's unique venues host everything from corporate events and product launches to social gatherings for **20 to 17,000+ guests**. Located near the Anaheim Convention Center and Disneyland Resort, our team manages every detail to ensure an unforgettable experience.

Honda Center Arena

	Reception	Banquet/Seated
Full Venue	17,000	N/A
Arena Floor	1,500	680
Impact Club	250	160
Jack Daniel's Club	250	150
Wine Cellar	50	25
Anaheim Room	50	25
Legacy Club	190	175
North Veranda Lounge	300	65

ARTIC

(Anaheim Regional Transportation Intermodal Center)

	Reception	Banquet
Full Venue	1,500	700
The Archway	800	400
The Gallery	200	60
The Nest + The Perch	300	110
River Loft + The View	98	98

Grove of Anaheim

	Reception	Banquet
Full Venue	1,700	740
Theater Lobby	400	120
Brewery X Biergarten	350	180
Crystal Lounge	200	100

The Loft

	Reception	Banquet
Full Venue	800	200
Full Venue + Barrel Bar	950	300
The Lounge	400	80
The Terrace	400	120

Concert Hall

	Reception	Banquet
Full Venue	5,000	800
Floor	3,500	780
Stretto Cafe	150	100

Katella Commons

	Reception	Seated
Full Venue	2,000	750
Ground Floor Buyout	900	350
Bar Bacchia	125	100
Second Level Patio	250	120
Vesper Lounge	100	50
Barrel Bar	175	100

Urban Park

	Reception	Banquet
Urban Park	1,500	N/A



Bring your event to a space that inspires.

Connect with our Special Events team today at specialevents@ocvibe.com

OCVIBE[™]
Special Events