

# Curl la Tourelle Head Architecture



Education

## Empathise and engage

If there's one thing we've learned makes better buildings, it's empathy. Architecture never happens in isolation and simply by being interested and engaged, we've found it's possible to open up the conversations that connect a scheme to its clients and community.

## We ♥ constraints

We believe that the more constraints there are, the better the architecture. If there aren't any constraints, we create them. Challenging sites, existing buildings and complex briefs almost always present incredible opportunities for great design.

## Social detail

If a site's constraints guide the bigger design decisions, then it's empathy that informs the smaller, social details. These details frame the human narratives that aren't included in the brief, anticipating specific moments in the users' lives.

## Passive future

To limit our environmental impact, we start with what is already there. By manipulating the form and fabric of a building—whether new or existing—we can work with the existing conditions of topography, light and orientation, and harness the natural energy sources offered by air, ground and water.

## Hemp on our boots

Good architecture is as much about what happens on the building site as it is about what's on the drawing board. By working alongside contractors as well as clients we can ring-fence the ideas and details that matter, championing the quality of the building throughout its construction.

## Curl la Tourelle Head



# Contents

All through SEND School - **Alfreton Community Park School**

Ecologically Sustainable - **Freshwater Biological Association**

Off Grid Learning- **Revitalising Peckham Rye**

Diversity in learning- **Unity Hub at Graig Park**

Adaptive Reuse - **Windmill School**

Modern Methods of Construction - **East Lane Primary**

Forest School - **Piory SEND School**

Remodelling a Grade II\* Listed Building - **Fitzjohn Primary School**

All through SEND specialist school - **Lexeden Spring School**

Designing within an historic setting - **John Lyon Independent School**

Developing life long skills - **Beckmead College**

Early years learning - **Wimbledon Park School**

Alternative provision school - **Pavilion Study Centre PRU**

Little school, Big school - **Robert Clack Lymington Fields School**

Providing for pupils and the wider community - **Kidbrook Park School**

Learning through collaboration - **Trinity College Dublin**

Generating energy from tidal turbines - **Thames Tidal School**

Campus Style School - **St Michael's Catholic High School**

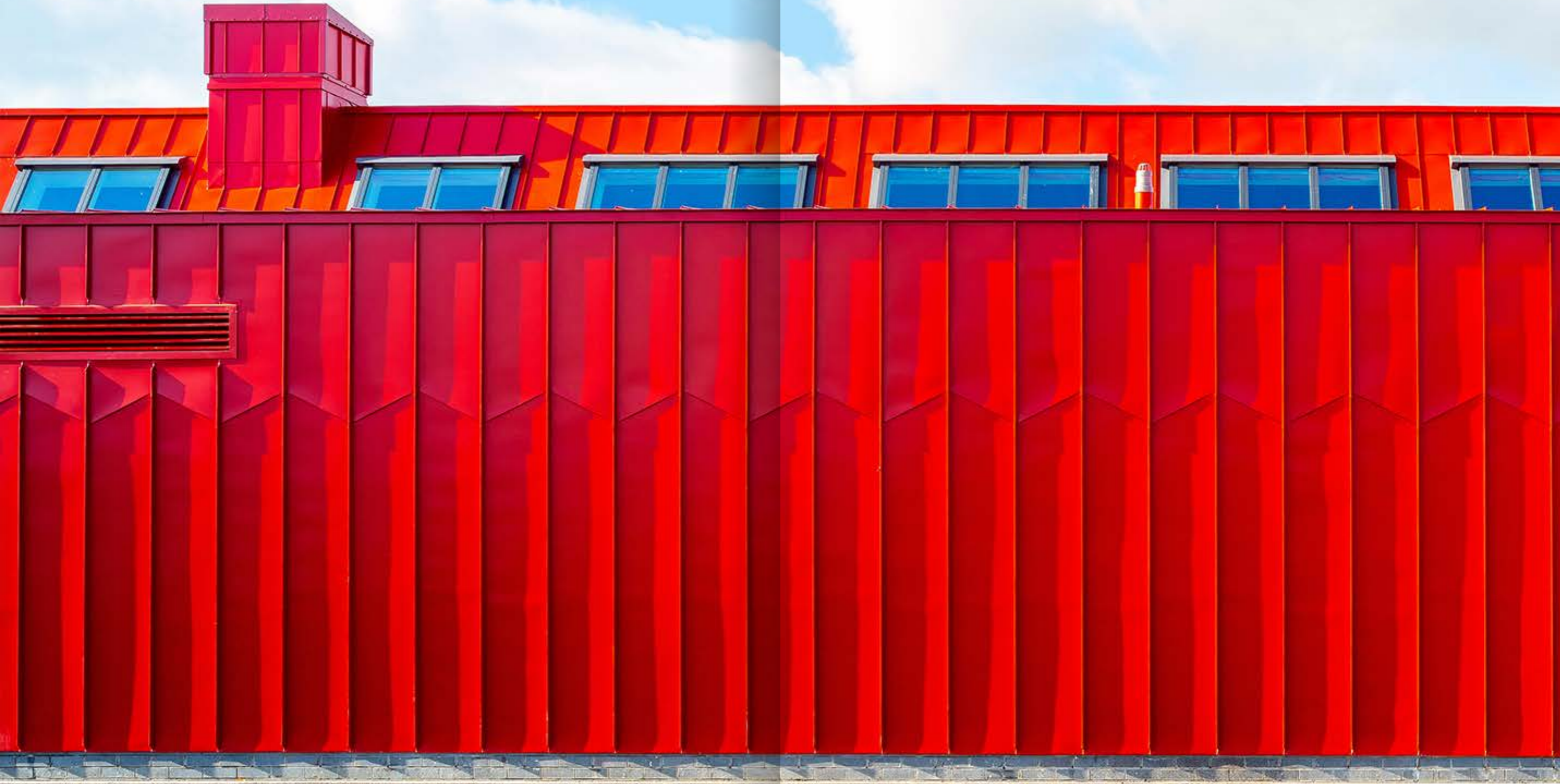
Designing with people - **Abbotsfield School for Boys**

Learning within constraints - **Pop-Up Schools**

# Alfreton Park Community School

RIBA   
Architecture.com

NATIONAL  
AWARD 2024  
WINNER



# RIBA NATIONAL AWARDS 2024

## Alfreton Park Community Special School

Practice Name Curl la Tourelle Head Architecture  
Client Derbyshire County Council  
Contractor Henry Brothers  
Principal Designer PFB Construction  
Structural Engineer Price & Myers LLP  
Services Engineer Method Consulting  
Landscape Architect Faithful & Gould

Muyiwa Oki PRIBA  
RIBA President

RIBA   
Architecture.com

# RIBA EAST MIDLANDS AWARDS 2024

## Regional Award Alfreton Park Community Special School

Practice Name Curl la Tourelle Head Architecture  
Client Derbyshire County Council  
Contractor Henry Brothers  
Principal Designer PFB Construction  
Structural Engineer Price & Myers LLP  
Services Engineer Method Consulting  
Landscape Architect Faithful & Gould

Muyiwa Oki PRIBA  
RIBA President

RIBA   
Architecture.com

# RIBA EAST MIDLANDS AWARDS 2024

## Project Architect of the Year 2024 Wayne Head

Project Name Alfreton Park Community Special School  
Practice Name Curl la Tourelle Head Architecture  
Client Derbyshire County Council  
Contractor Henry Brothers  
Principal Designer PFB Construction  
Structural Engineer Price & Myers LLP  
Services Engineer Method Consulting  
Landscape Architect Faithful & Gould

Muyiwa Oki PRIBA  
RIBA President

RIBA   
Architecture.com

# RIBA EAST MIDLANDS AWARDS 2024

## Building of the Year 2024 Alfreton Park Community Special School

Practice Name Curl la Tourelle Head Architecture  
Client Derbyshire County Council  
Contractor Henry Brothers  
Principal Designer PFB Construction  
Structural Engineer Price & Myers LLP  
Services Engineer Method Consulting  
Landscape Architect Faithful & Gould

Muyiwa Oki PRIBA  
RIBA President

Sponsored by  
 **EHSmith**  
Architectural Solutions

RIBA   
Architecture.com

# '...this school changed my life,'

Ryan Jones,  
student at Alfreton Park



↓  
The school forms a campus like family of nurturing buildings within a park setting

→  
Following the advice of Frank Lloyd Wright, the school is positioned on the brow of the hill, rather than its crest, creating a school "of the hill", not on it



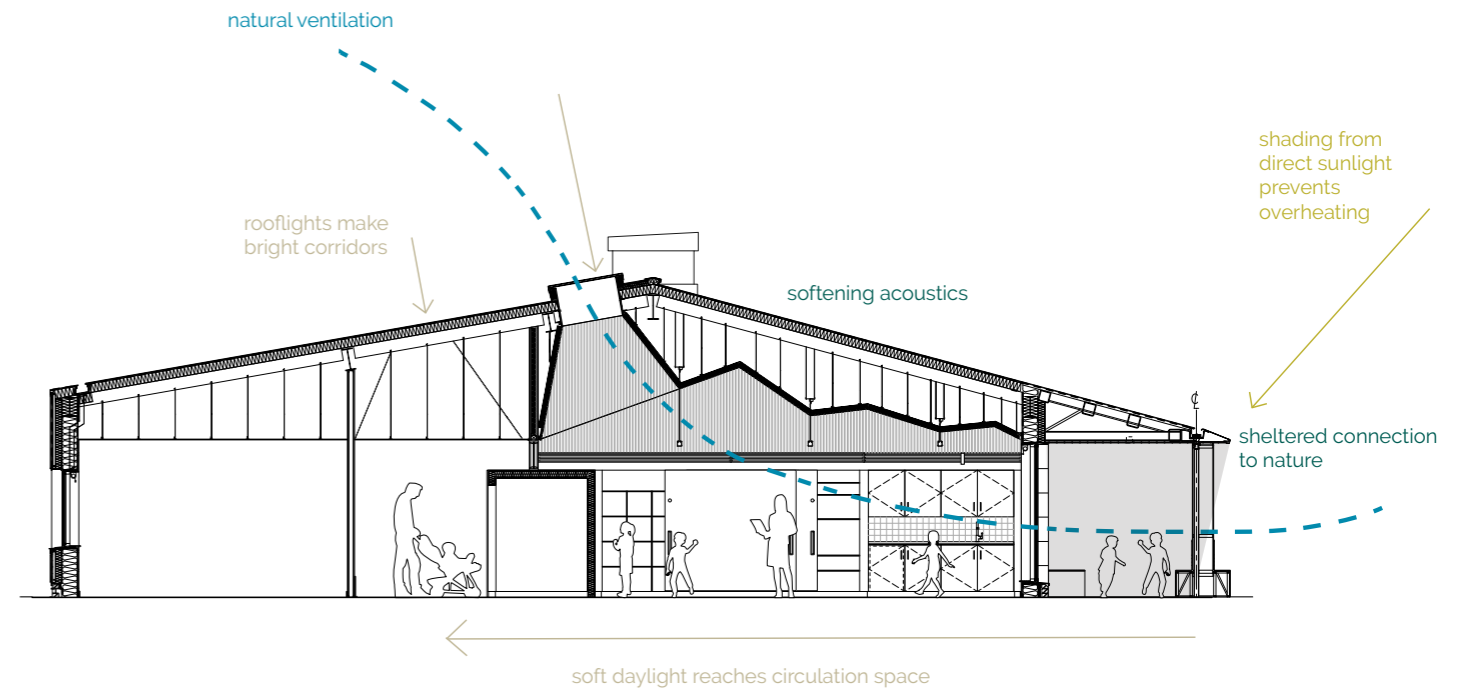
Secure, welcoming and inclusive learning environments

Light filled classrooms

Visibility and surveillance between classrooms and circulation

Sociable circulation

## All through SEND School



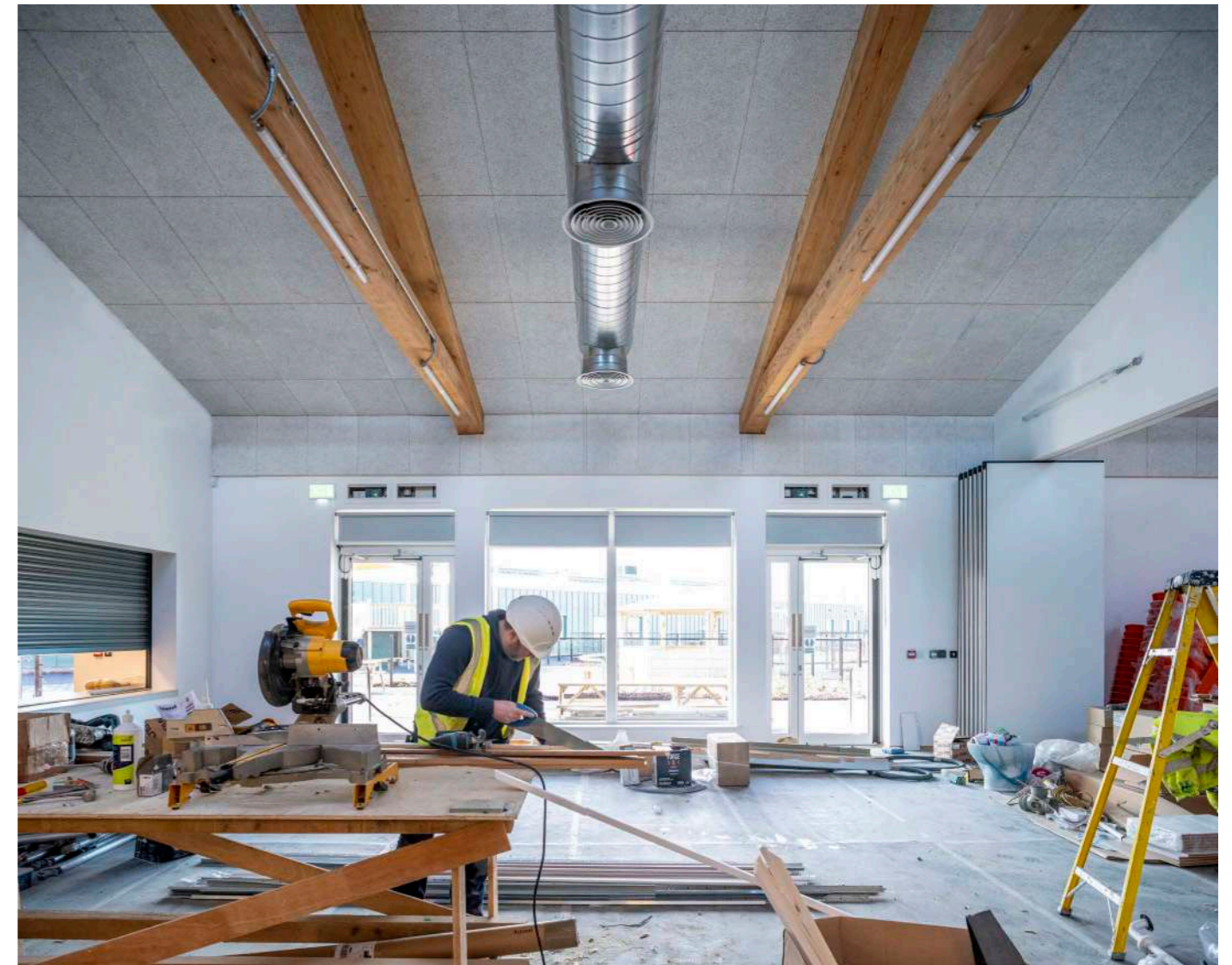
↑  
 A simple and efficient single storey roof section is used throughout, a generator for elegance in its setting, creating open and light internal spaces for activities



All through SEND School







**‘We have had a reduction in behaviour incidents, we see an improvement in communication from the pupils and generally ... pupils are happier,’**

Josie O'Donnell, Headteacher Alfreton

RIBA  Architecture.com | NATIONAL AWARD 2024 WINNER

RIBA  Architecture.com | CLIENT OF THE YEAR 2024 SHORTLISTED

RIBA  EAST MIDLANDS AWARD 2024 WINNER

RIBA  EAST MIDLANDS BUILDING OF THE YEAR 2024 WINNER

RIBA  EAST MIDLANDS PROJECT ARCHITECT OF THE YEAR 2024 WINNER

RIBA  EAST MIDLANDS CLIENT OF THE YEAR 2024 WINNER



All through SEND School

# Freshwater Biological Association





"We have been working with the team at CLTH for several months on an ambitious feasibility study. From the get-go I have found CLTH to be really focused on understanding our organisational ambitions and then turning that into an inspiring architectural vision.

At the same time their hands-on, grounded and practical approaches have ensured we keep our feet on the ground regarding technical, planning and cost considerations! I very much view CLTH as an essential part of our programme team and would have no hesitation in recommending them."

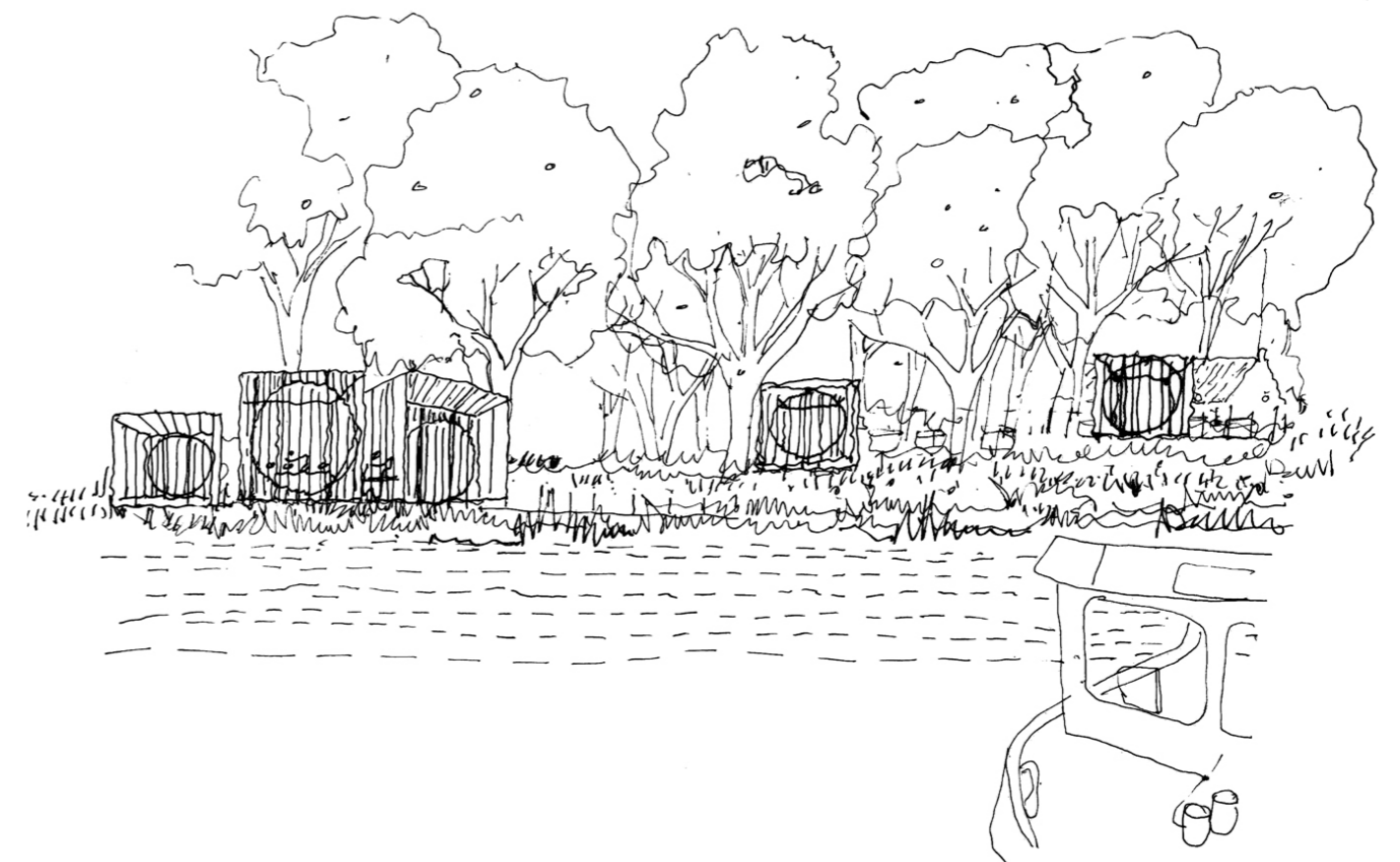
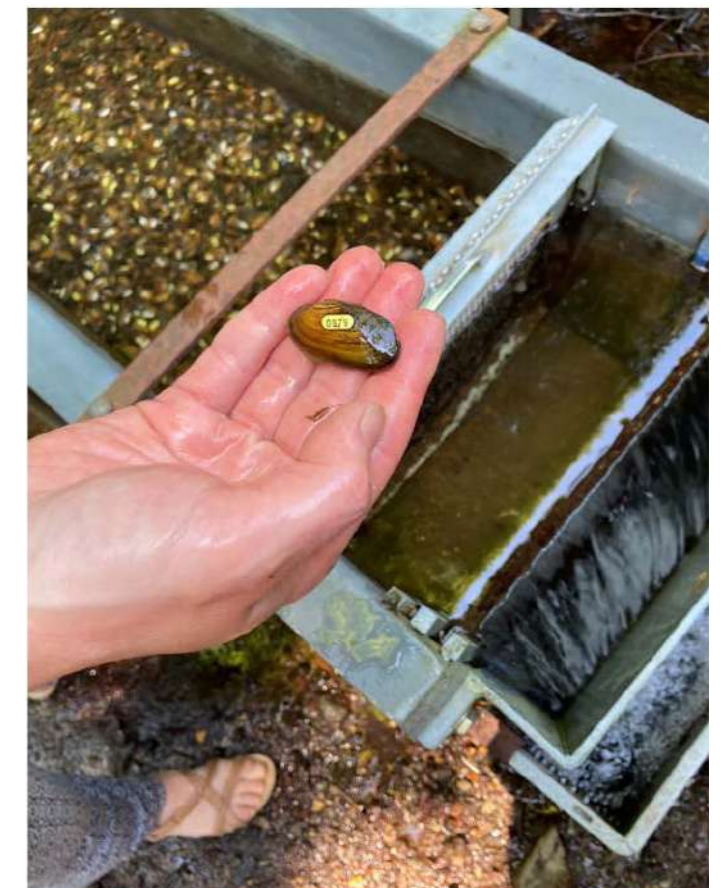
Simon Johnson  
 Executive Director, Freshwater Biological Association



The design will feature bio-secure facilities, teaching labs and equipment storage, alongside sustainable sanitation, and water management solutions. We intend to install vertical flow wetlands to filter wastewater and achieve Net-Zero in construction and operational energy.



Early sketch design of the proposal nestled into the canopy of the National Park.



## Ecological Sustainability



↖  
 A proposed masterplan of the Freshwater Biological Association's new premises. The facilities will include bio-secure facilities, teaching labs and equipment storage.

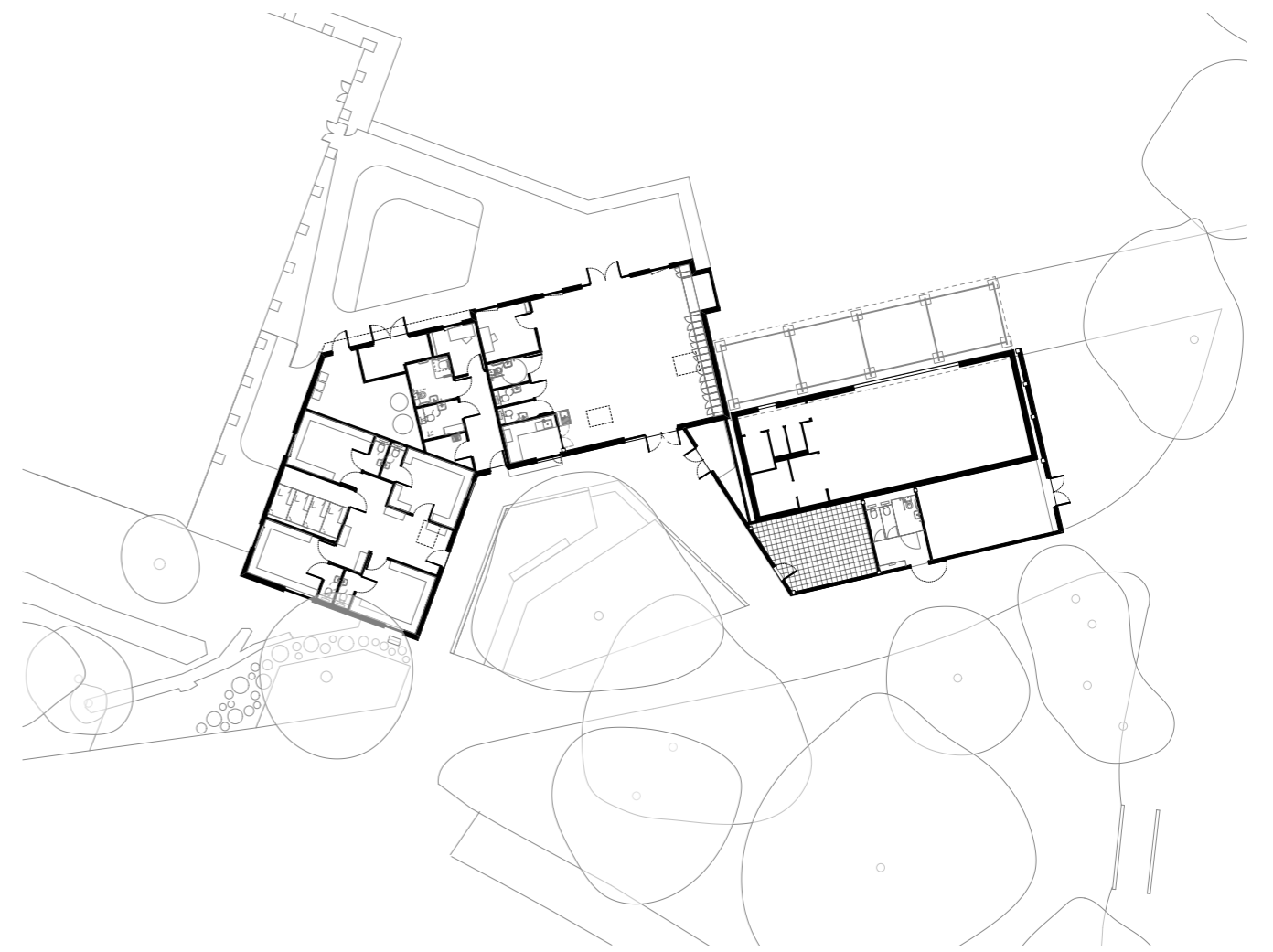
←  
 Working closely with the FBA scientific team to create a new sanctuary for the mussels to facilitate their reintroduction into the wild.

- Habitat restoration and water quality improvements
- Sensitive design in the Lake District National Park
- Sustainable sanitation and water management solutions
- Protecting endangered freshwater species

## Ecological Sustainability

# Revitalize Peckham Rye





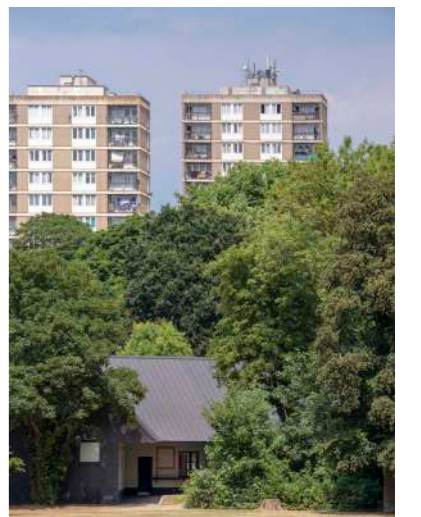
Sensitively arranged around a mature horse chestnut tree, the new-build Peckham Rye Pavilion blends gently into the historic tree-line, looking onto the Park's open playing fields to the south and providing easy access to its facilities.



The pavilion utilises natural light and ventilation where possible, with the tall spaces, skylights and large windows designed to take the best advantage of this.



The design references London's picturesque Victorian park pavilions and features colourful and playful decor inside and out.



Improving public facilities around the parkland area

Structural CLT and finishes

Light and airy spaces

Easy access and visibility

## Off grid learning





**“The new pavilion in Peckham Rye Park looks fantastic within the landscape. The shape and lines it makes are wonderful close up but when viewed from further away do not detract from the views of the park it sits in.”**

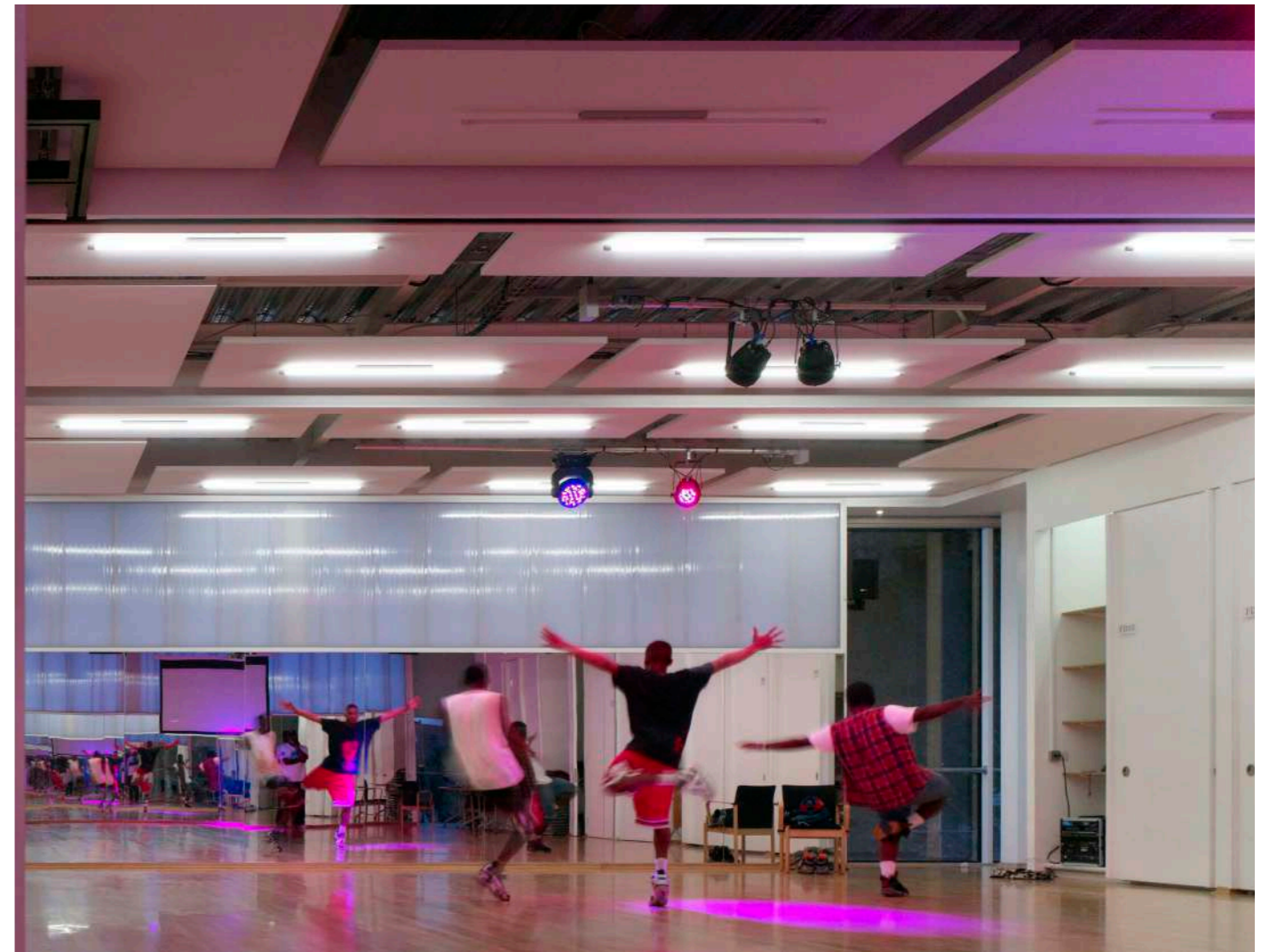
Will Walpole, Environment and Social Regeneration Manager, LB Southwark



# Unity Hub at Graig Park







Designed collectively with the Hub's young people, the building features a series of functional and dynamic spaces ranging from a climbing cave to dance studio and media labs including a space for reflection and an outdoor multi-sport games surface.

The extended existing building has been transformed with the backlit polycarbonate cladding to unify new and existing and gain a role within the community. Colour change LED lighting can be programmed by the Hub's young people and glows, beacon-like, in its park-edge setting.

Award winning

Series of functional, dynamic and flexible informal learning spaces

Youth led design

Visibility and surveillance from surrounding park

## Diversity in learning



**“The building is truly a manifestation of the ethos and intention of Enfield’s Youth and Family Support Service to reach out to young people in a deprived area of North London.”**

# Creative Arts Hub, Norwich



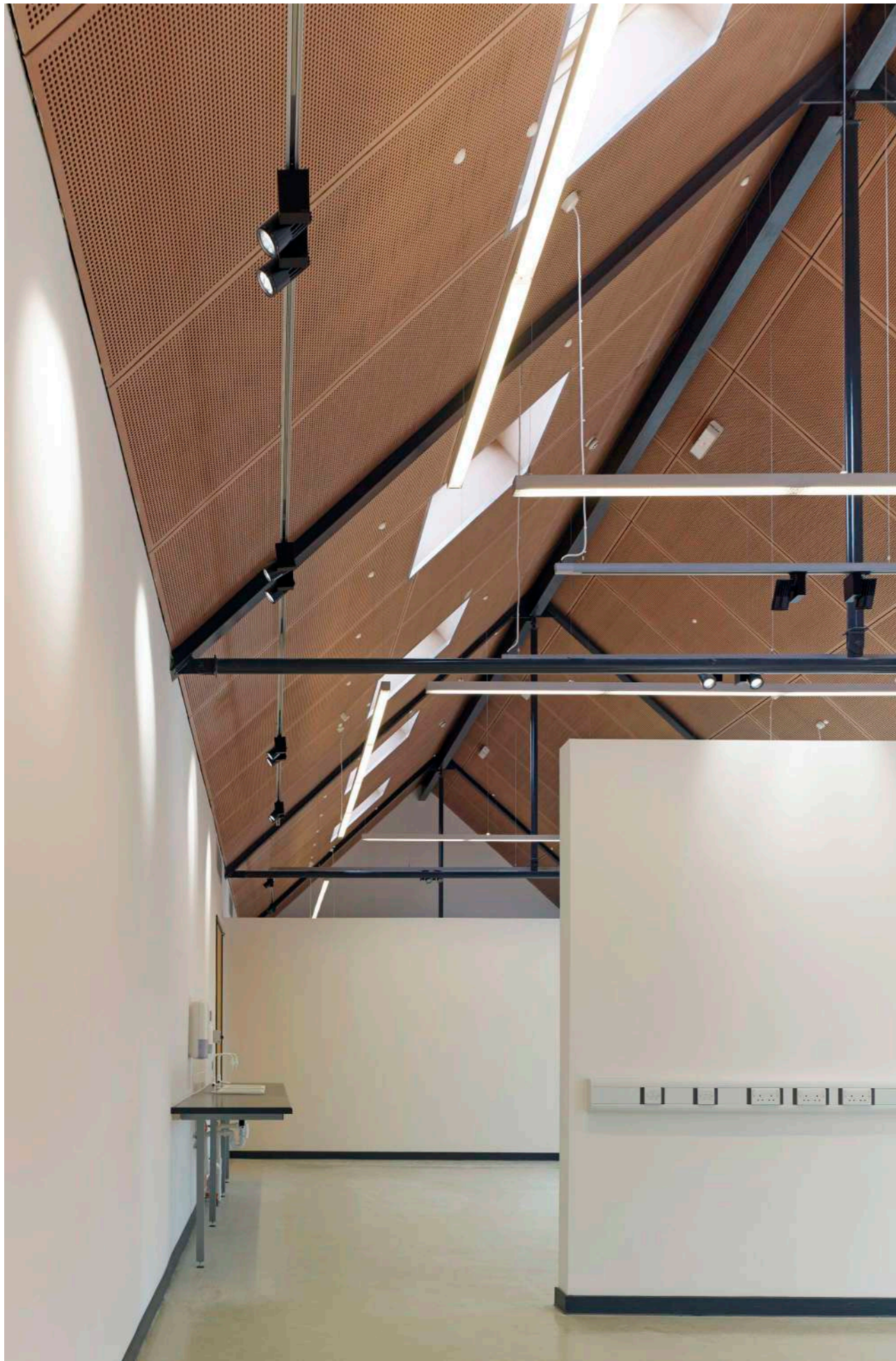


Rectilinear, black timber clad pavillion

Set in front of a veil of trees

Gallery spaces illuminated by northern light

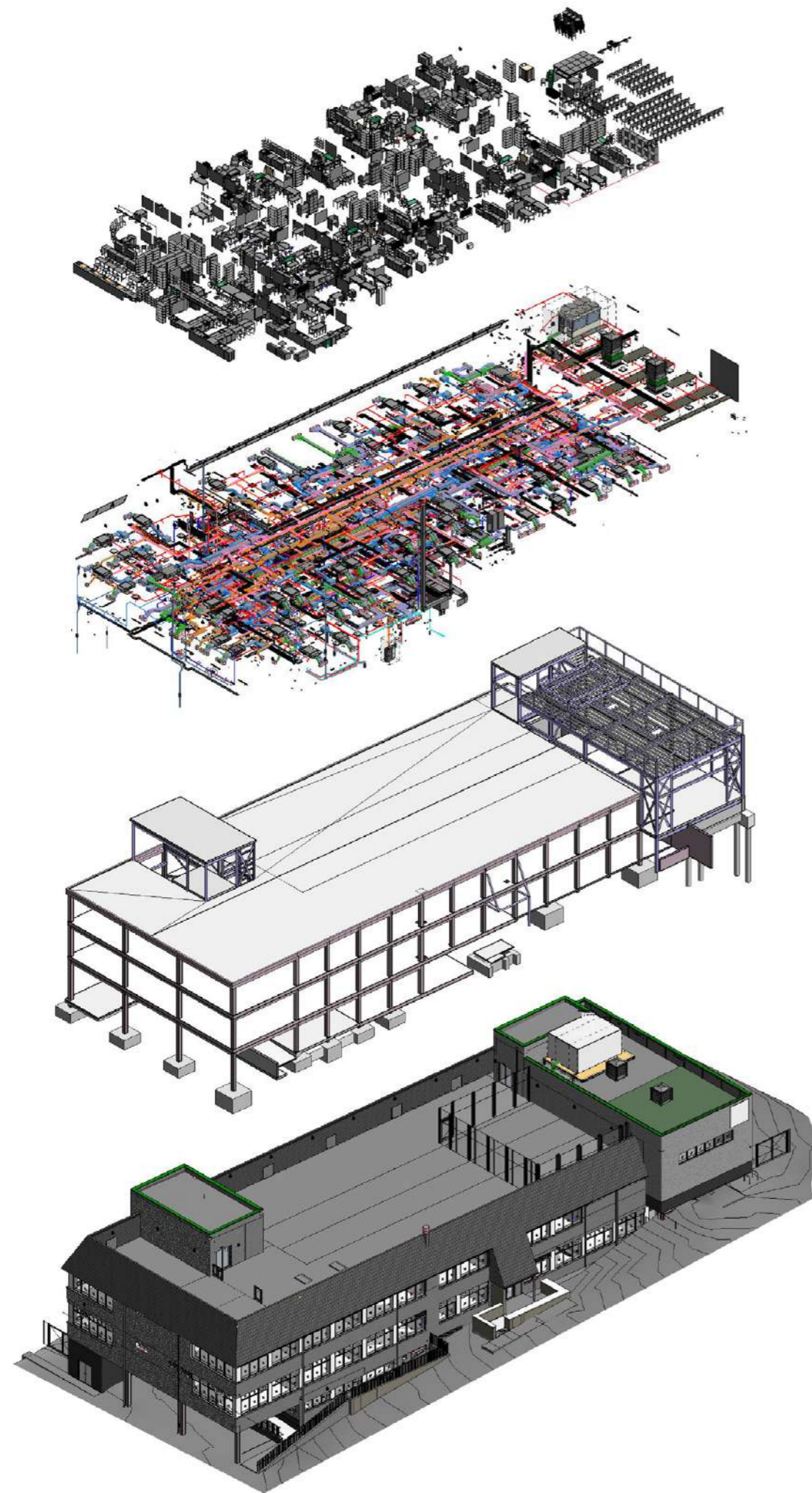
## Further Education



Further Education

# Windmill School, Barnet





The newly opened school within its residential context. The roof has been adapted as an open air playground and vegetable garden. The PVs have been installed in the slanted sidings which also act as tall parapet for the children playing on the roof.

## Adaptive Reuse

# East Lane Primary, Brent



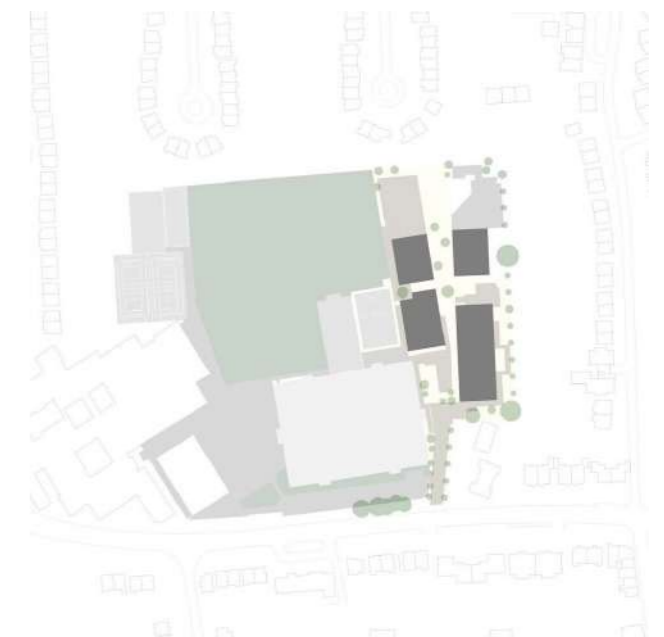




The outdoor sheltered and vegetated circulation space between the school blocks



Proposed School Site Plan within its residential context



8 Design and Build primary schools across Brent

Unique and characterful designs

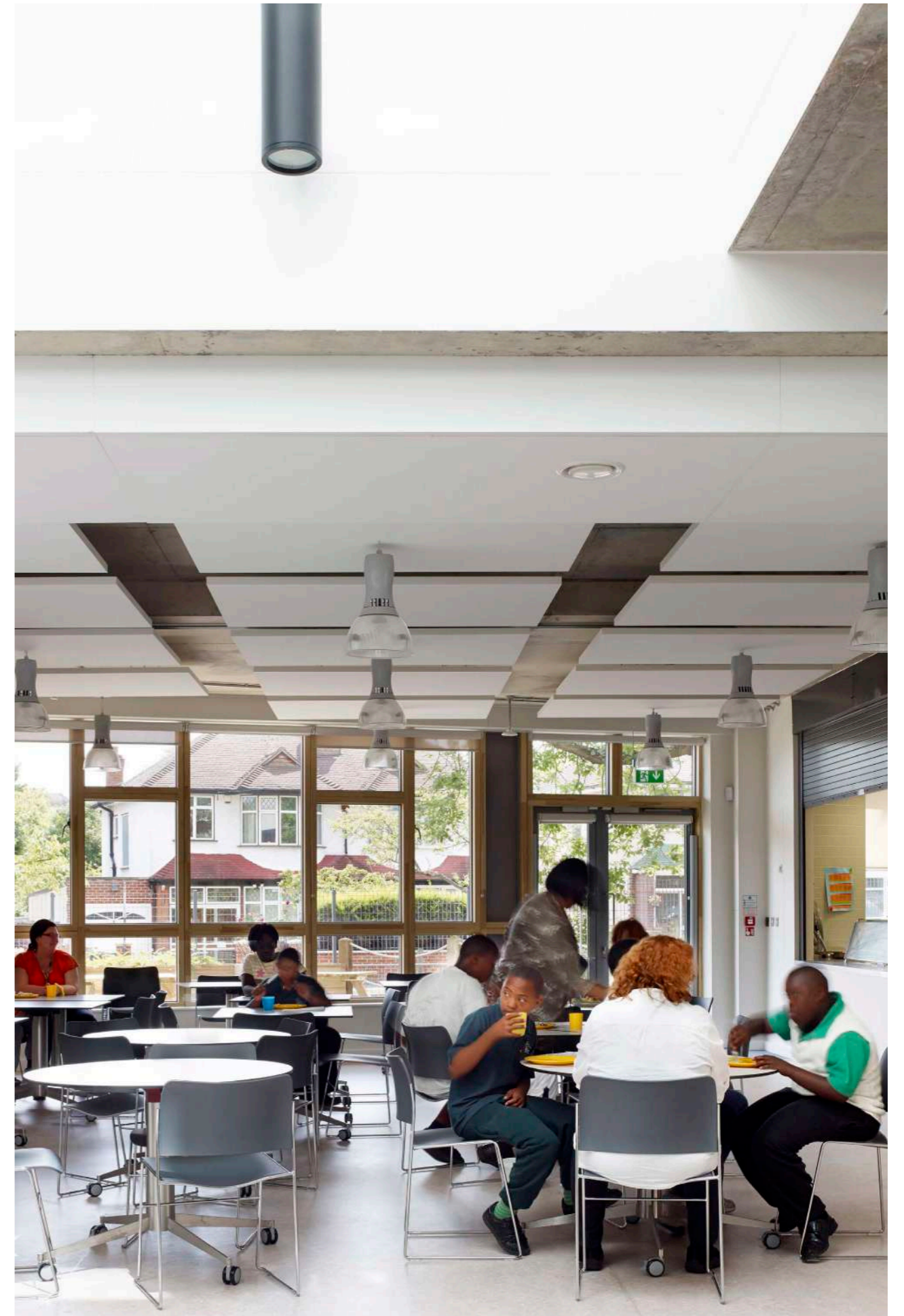
Modular design allowing flexibility and variation

In keeping with the vernacular

## Modern Methods of Construction

# Priory School, Croydon





Forest School



Outdoor learning and social activities

Skywalk through the tree canopy to mature woods

Extended roof with play terraces and multi-games areas

## Forest School

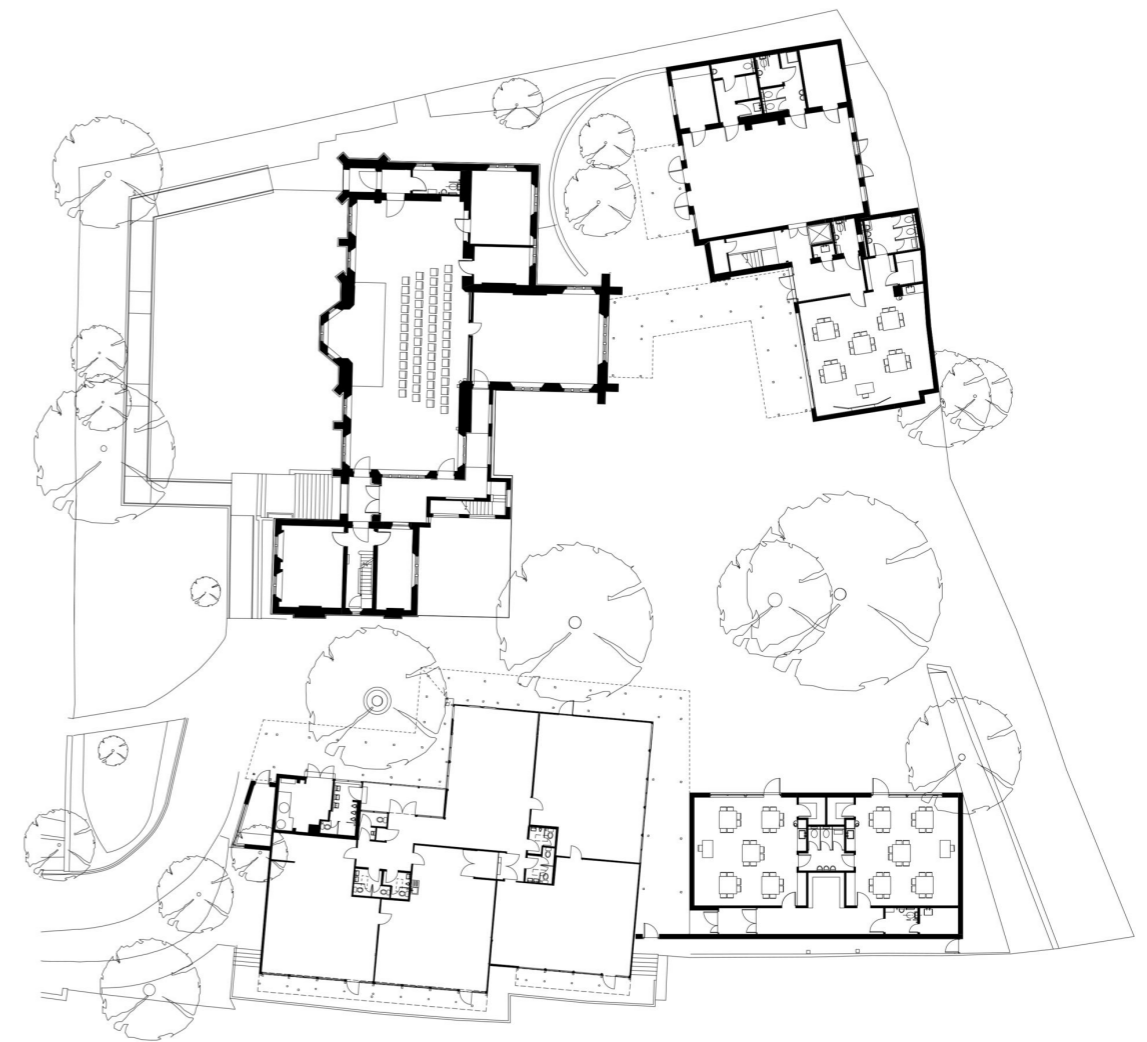






**“Everyone in the whole school community is proud of our school. It has an amazing atmosphere which is felt every time you are here.”**

Rob Earrey, Head Teacher.



RIBA Award Finalist

Full classroom fit out

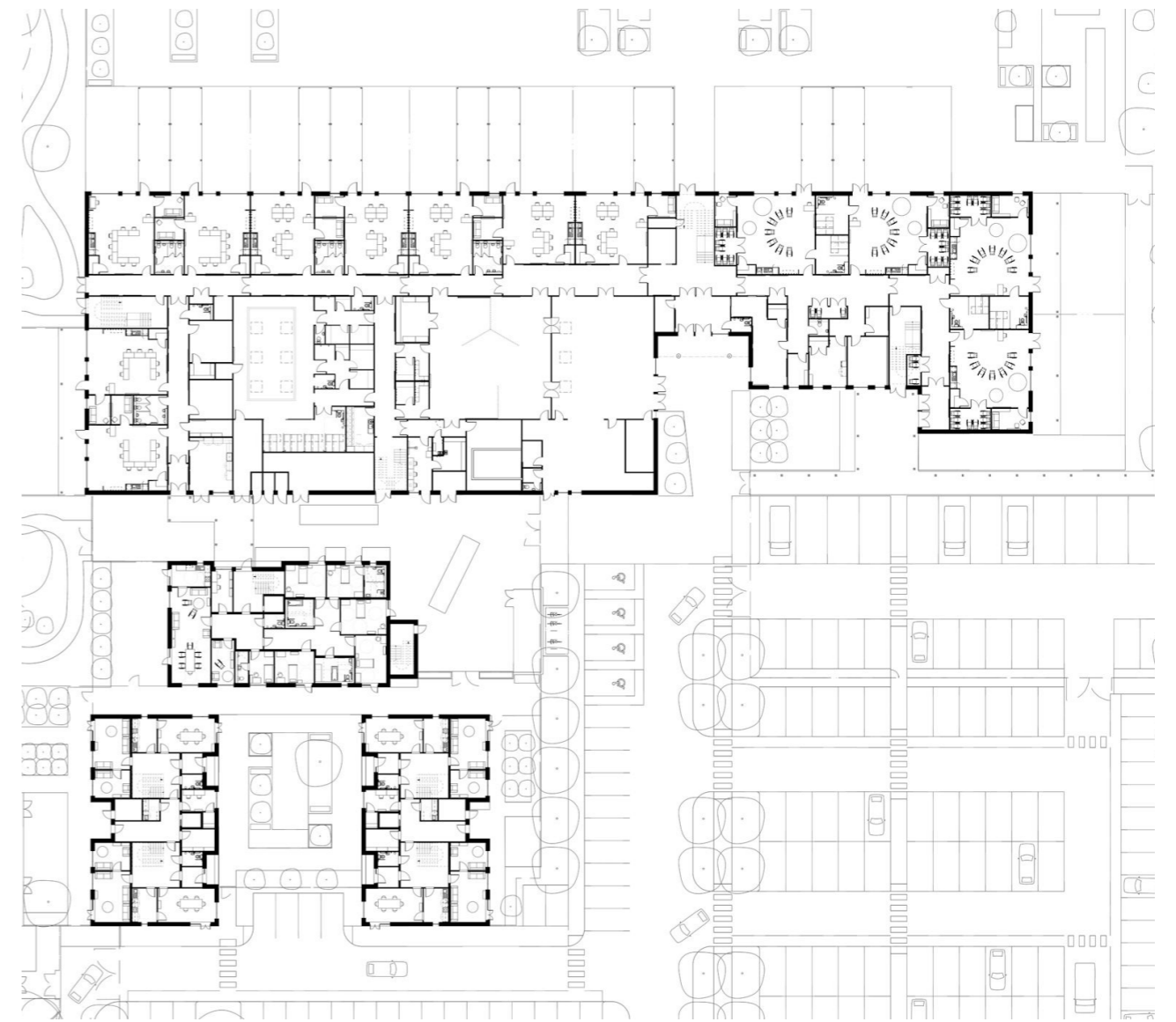
High thermal performance, sustainable design

**Remodelling a Grade II listed building**

# Lexden Spring School, Colchester







Class bases at rear of the building shields them from traffic noise and allows direct access to protected external areas



Internal courtyards provide daylight and natural ventilation into the deep plan of the building. Most classrooms face South, taking advantage of solar gain

New build through SEND school

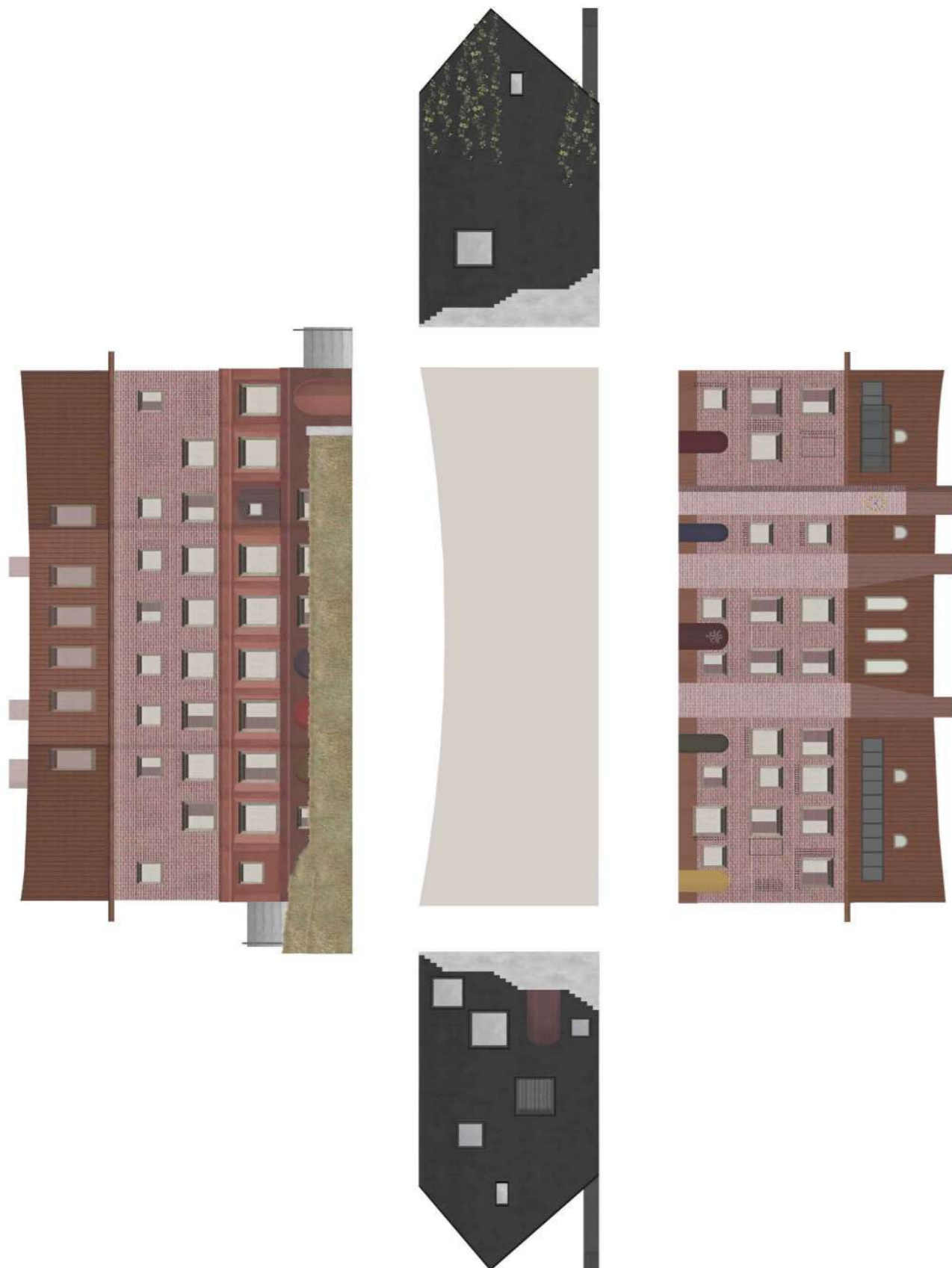
Teaching School & Boarding Accommodation

Protected, dedicated "outdoor classroom"

**All through SEND specialist school**

# John Lyon Independent School





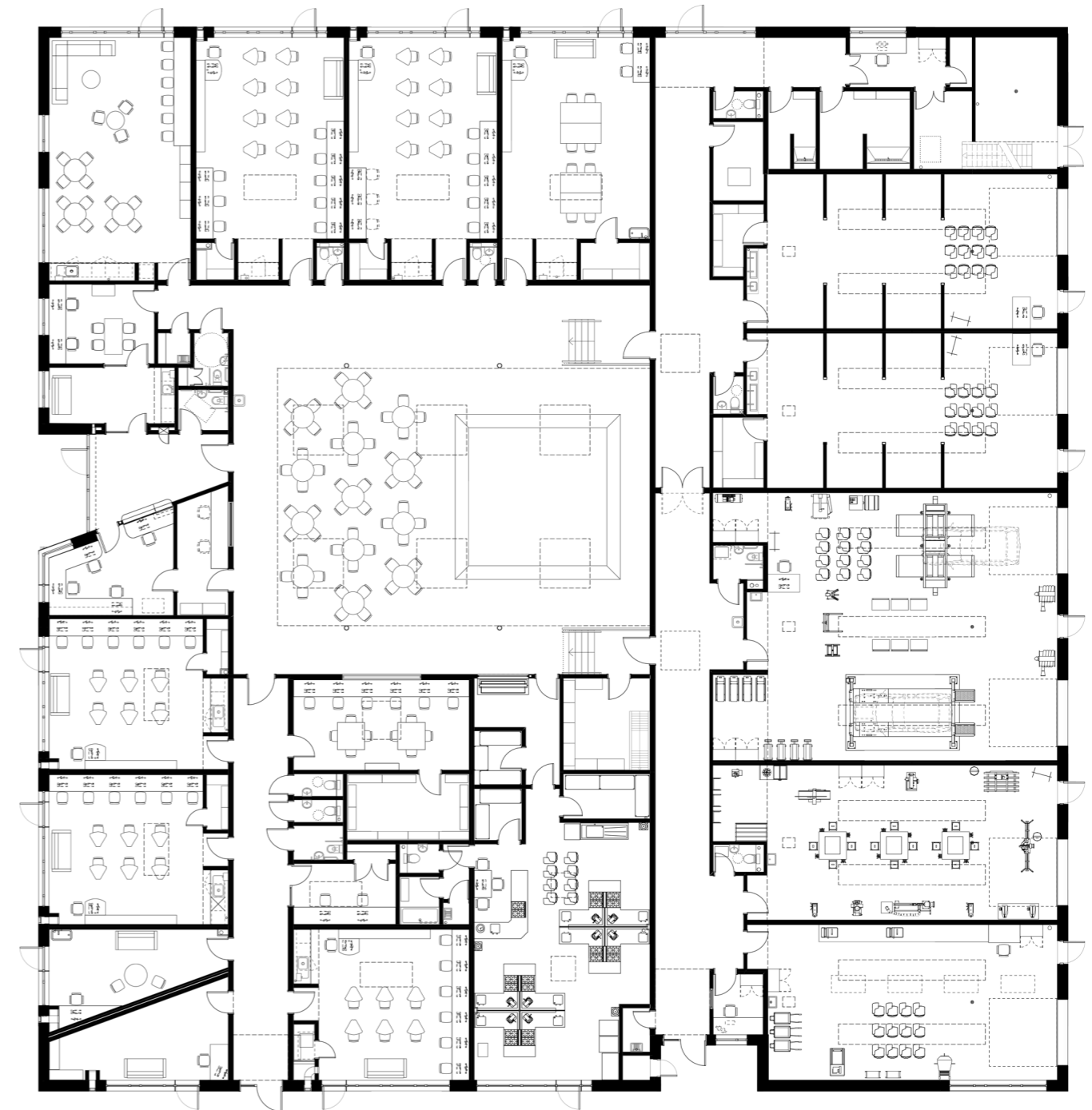
Designing within world heritage site and listed buildings

New STEAM centre

Forward thinking learning environment

**Designing within an historic setting**





↑  
Proposed Ground Floor Plan with its central courtyard

Vocational college for young people

People led design process

Central Social zone with flexible activity spaces

High thermal performance

**Developing life long skills**

Wimbledon Park School





Interwoven indoor and outdoor learning spaces

Operational net zero buildings

Thermally efficient retrofitted buildings

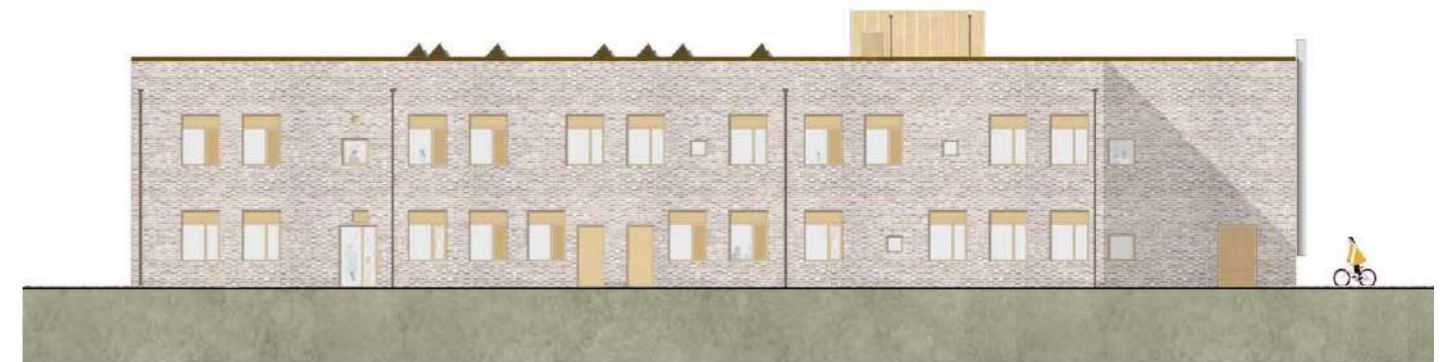
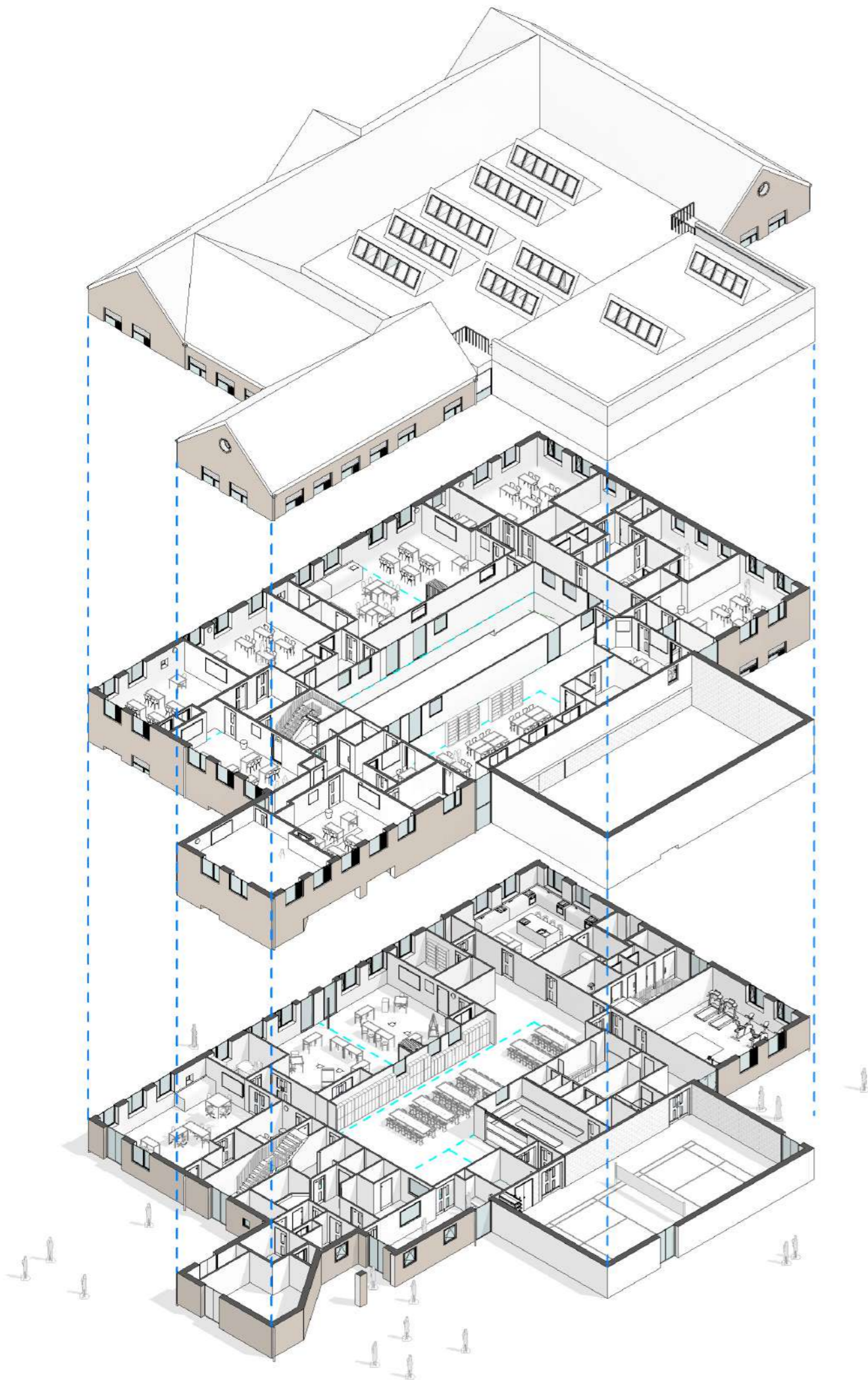
Sustainable SUDs strategy

Early years learning

# Pavilion Study Centre Pru







- ↑ Proposed Elevations
- ← Exploded axonometric

DfE placement accommodation with intervention and respite learning spaces

Designed to DfE Output specification

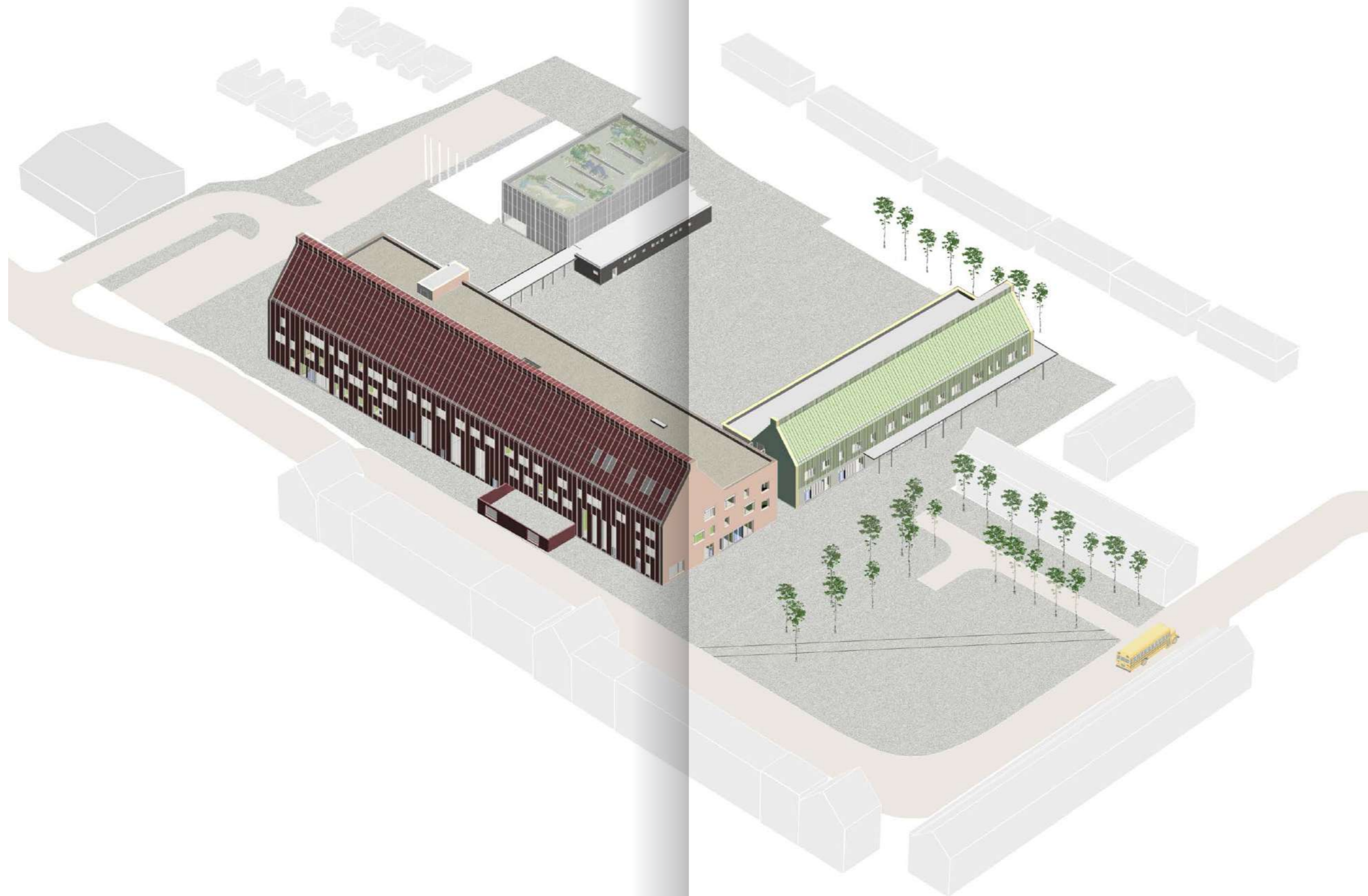
Classes open up to central courtyard offering passive surveillance

High thermal performance

## Alternative provision school

# Robert Clack Lymington Fields School





Education within a mixed use area

Individual blocks to house various age group

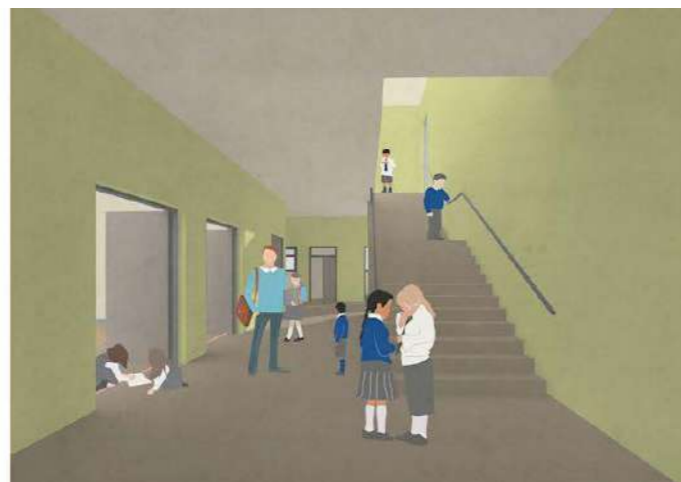
Central outdoor courtyard arrangement

## Little School, Big School

# Kidbrooke Park School, Woolwich

# Kidbrooke Park





Large, high quality composite aluminium and timber windows provide plentiful natural light to teaching spaces, complemented by the contextual brick



Early studies of interiors and the main staircase

High quality, sustainable educational facilities for everyday use

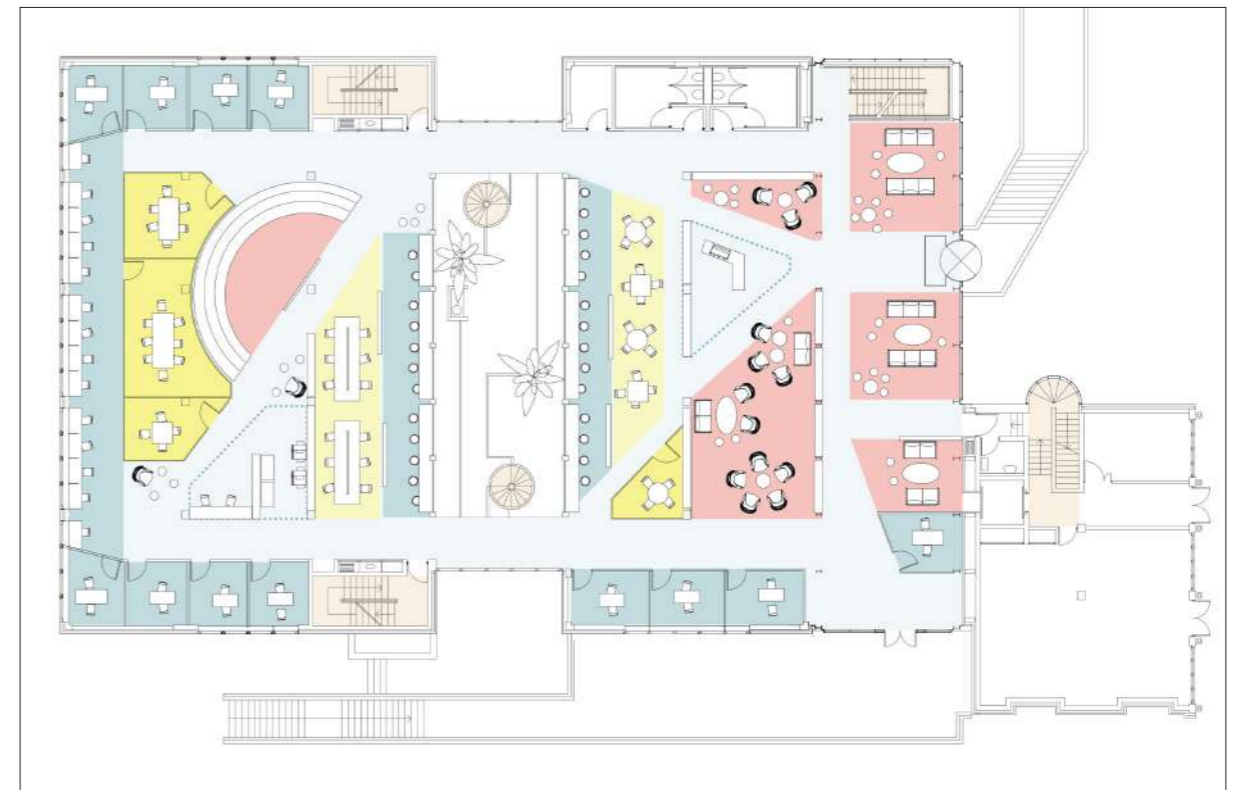
Learning for different age groups

**Providing for pupils and the wider community**



# Trinity College Dublin





Designing flexible but individual spaces

Developing various social environments

Exploring potential for space across 6 college buildings

**Learning through collaboration**





# Thames Tidal School

Unbuilt, Built, Imagined



NO  
UNAUTHORISED  
ENTRY

FULLERS  
THE BANKER

FULLERS  
THE BANKER

THE BANKER



Exemplar low carbon construction technologies

Low embodied energy generator

Generating energy from tidal turbines

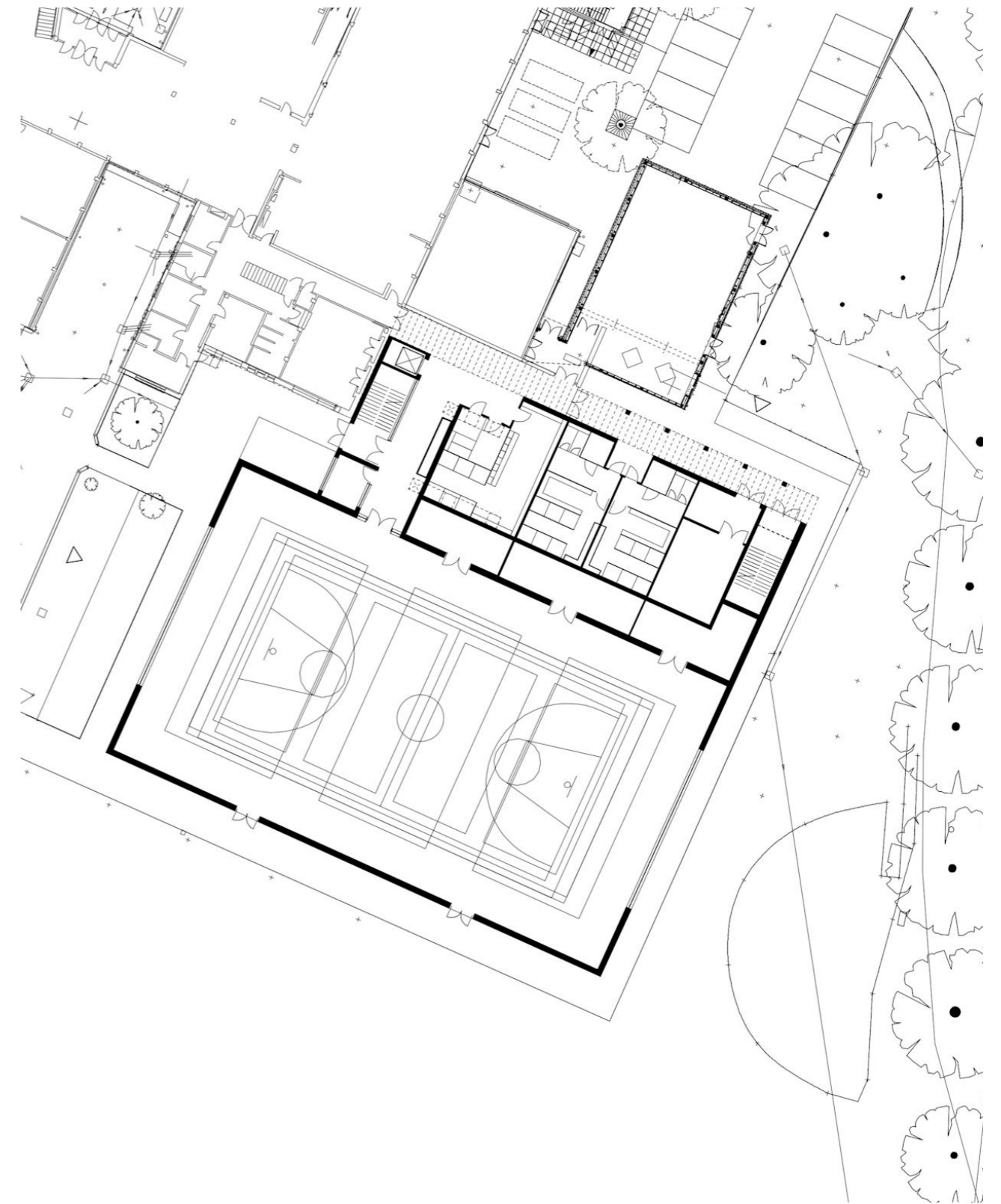
# St Michael's Catholic High School





**“You have been imaginative and resourceful, and a pleasure to work with.”**

John Murphy, previous Head Teacher.



Masterplanning for new build and refurbishments of campus style school

BCSE awarded “Best Sport Provision”

**Campus style school**

# Abbotsfield School for Boys



**“We have been impressed with their team work and sympathetic understanding of the school’s needs, as well as their knowledge of the constraints that exist when dealing with a working school environment.”**

Steve Outen, Bursar, Abbotsfield School.



Maximizing outdoor playspace.

Corridors as physical and acoustic barriers

Engaging pupils throughout design stages

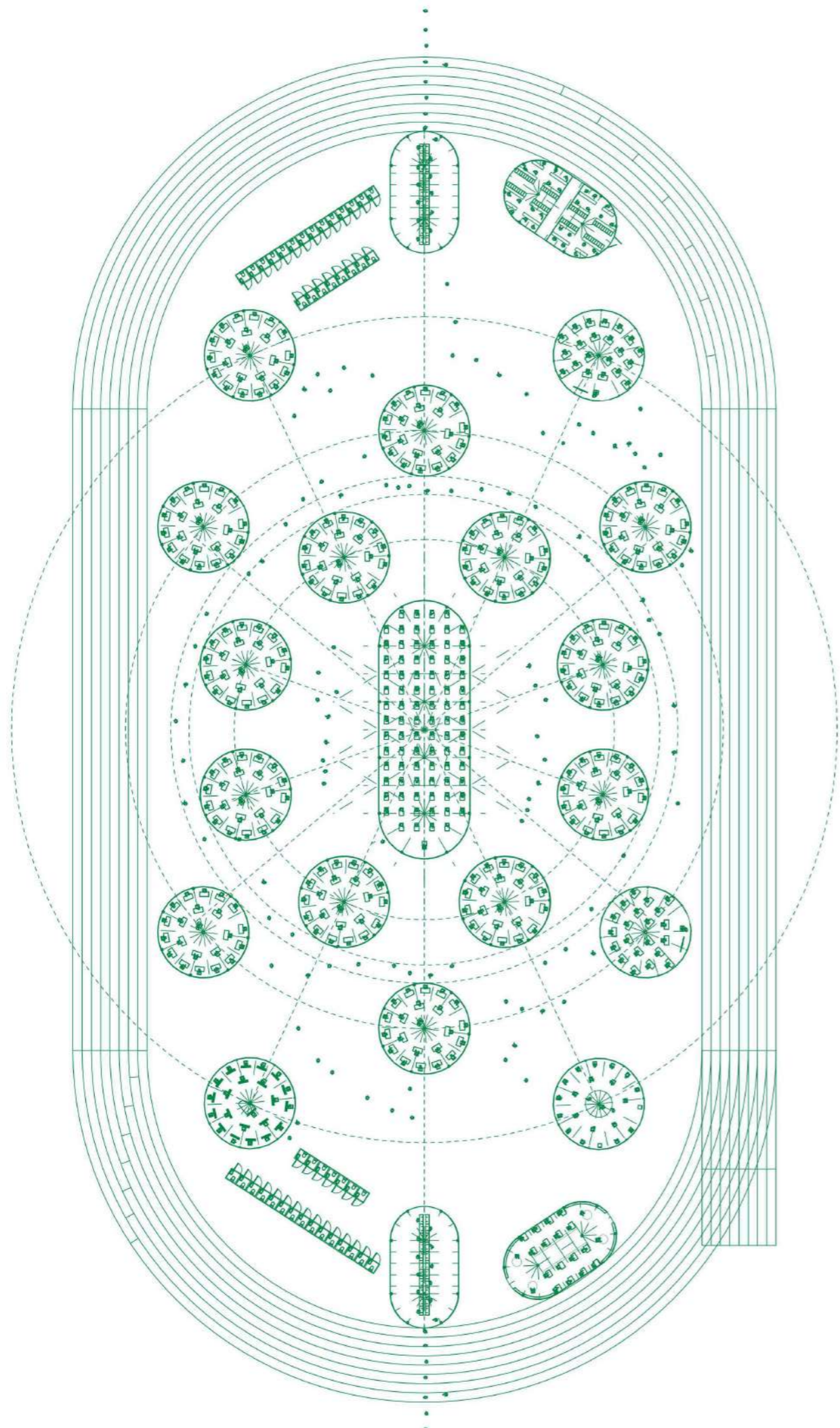
Orientation of building to maximise daylight

**Designing with people**

# Pop Up Schools







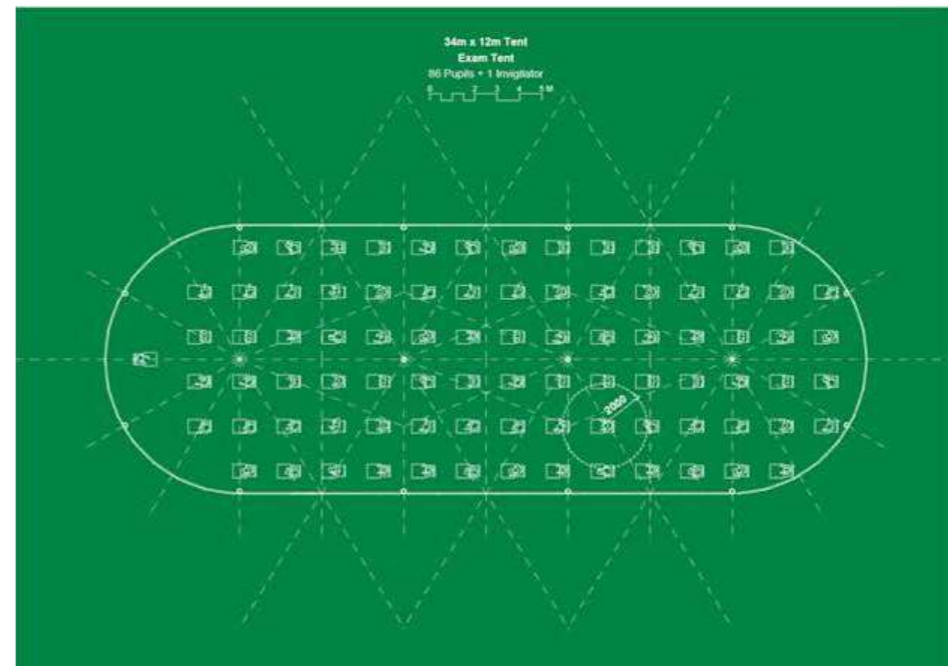
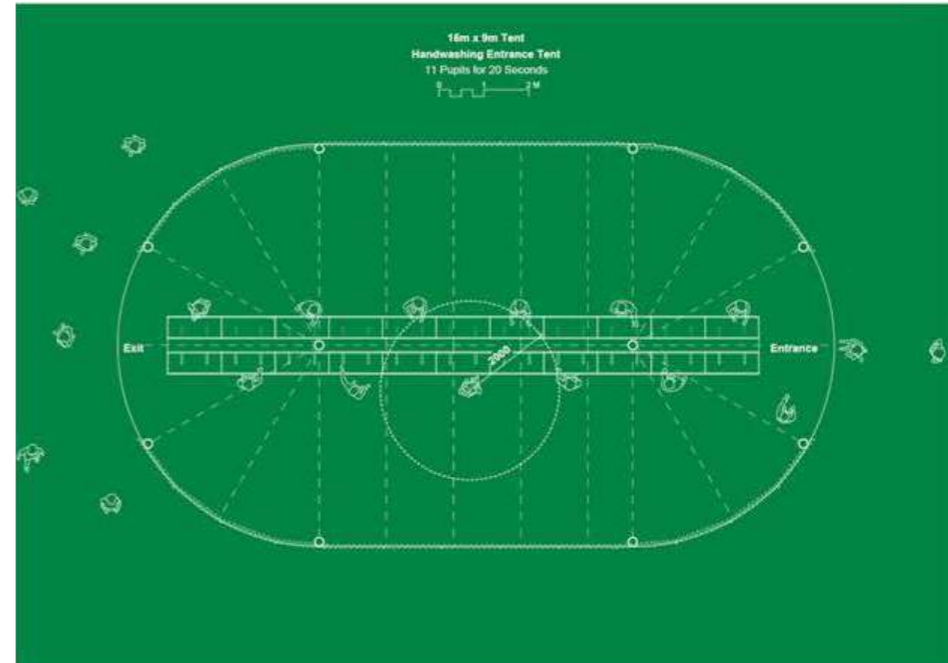
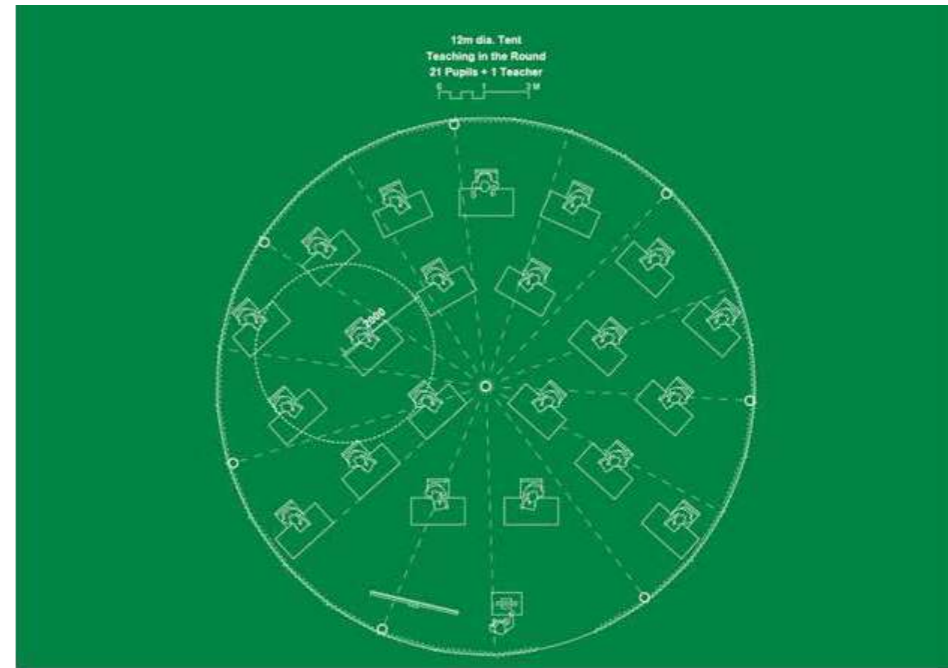
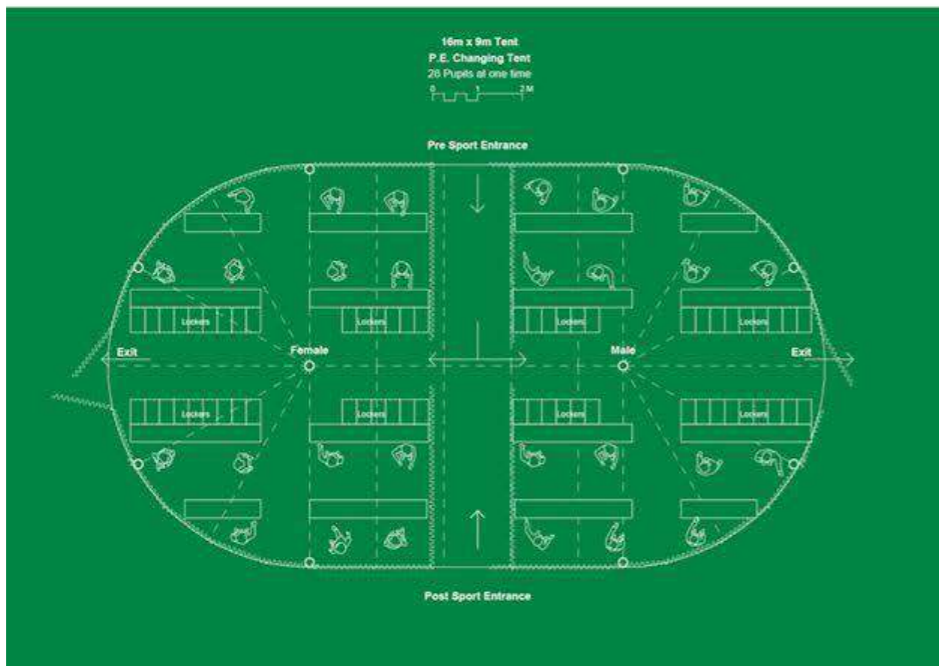
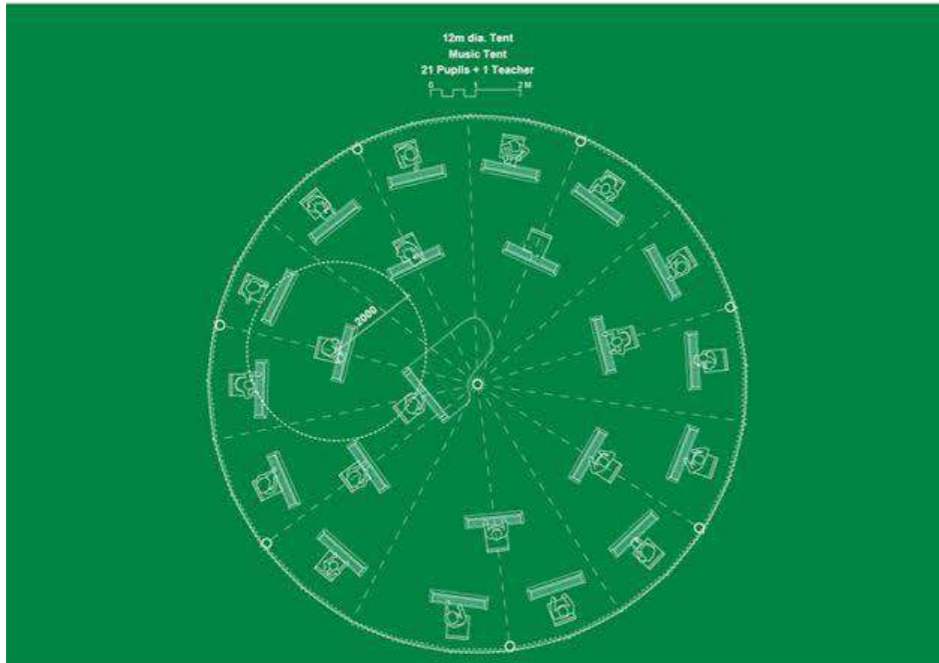
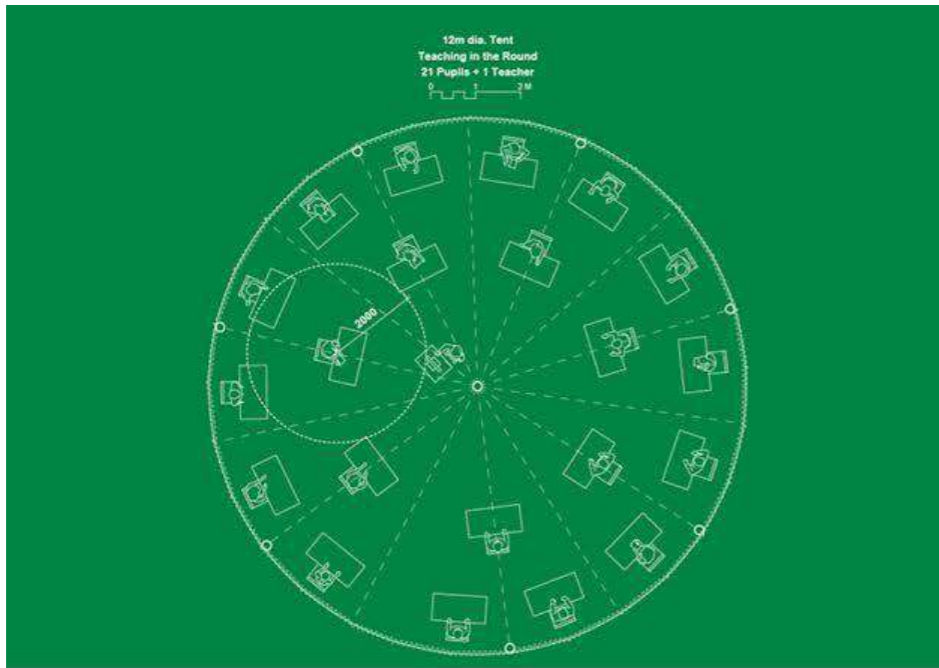
Providing solutions in challenging times.

Promoting well being and safe learning environment

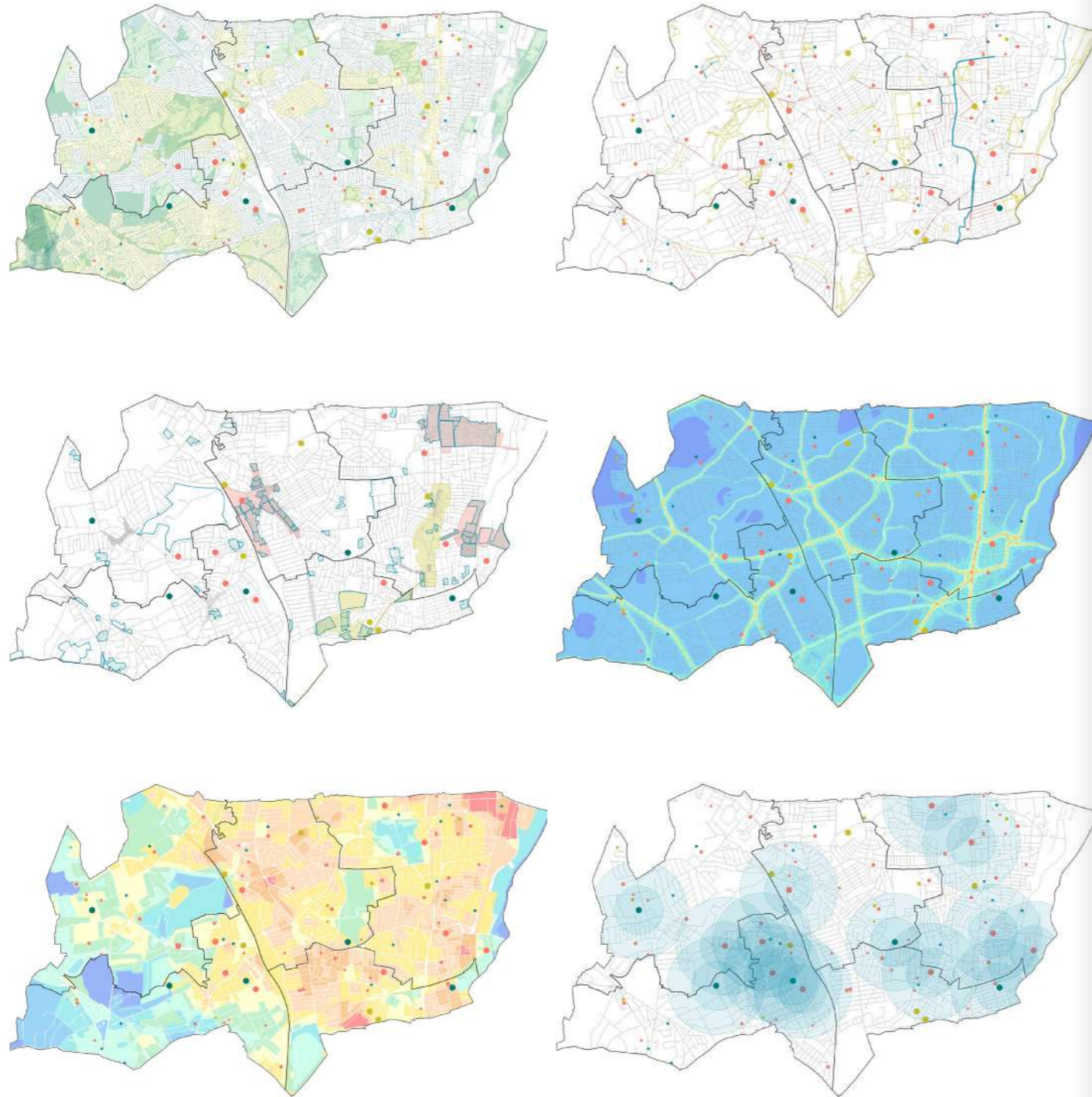
Reusing available resources in periods of dormancy

Temporary and adaptable methods of learning within outdoor settings

## Learning within constraints



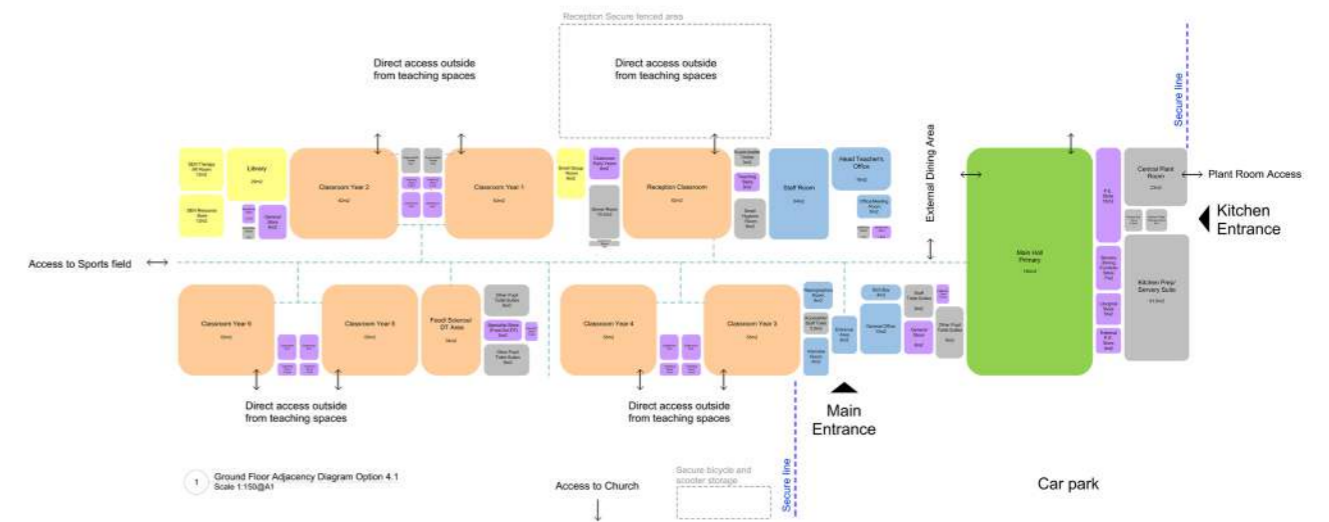
# Haringey Education Sites Masterplan



Identifying opportunities for improvement, efficiency and sufficiency of existing school estates  
 Considering the needs of Mainstream, Alternative Provision and SEND education delivery  
 Implementing new SEND and AP strategy within the Borough of Haringey  
 High quality, sustainable educational facilities for everyday use

Strategic masterplanning for next 20 years

# DfE Schools Technical Advisors



Operational net zero buildings  
 Improving thermal efficiency through retrofit of existing buildings

Technical Advisors for 12+ Schools

# Curl la Tourelle Head Architecture

## Education Projects

Podium Level  
Shakespeare Tower  
Barbican  
London EC2Y 8DR  
mail@clth.co.uk  
+44 (0)20 7267 0055

Further practice studios at  
Silver St, Deal  
& The Paragon, Bath.

Latest News:  
[www.clth.co.uk/news](http://www.clth.co.uk/news)

CLTH are signatories of the RIBA Inclusion Charter and are fully committed to making architecture more inclusive.

**Winner: RIBA National Award 2024: Alfreton Park Community School**

**Winner: RIBA East Midlands Building of the Year: Alfreton Park Community School**

**Winner: Civic Trust Awards 2024: Alfreton Park Community School**

**Finalist: Building Awards 2024 - Delivering Social Value**

**Finalist: London Construction Awards 2024 - Excellence in Community Engagement: Your Bruce Grove**

Winner: RIBA East Midlands Project Architect of the Year 2024

Winner: RIBA East Midlands Client of the Year 2024

Winner: RIBA East Midlands Award 2024

Winner: Civic Trust Awards 2024, Special Education Award: Alfreton Park Community School

Winner: AJ Architecture Awards 2023, Education: Alfreton Park Community School

Shortlisted: Building Awards 2024, Delivering Social Value: Alfreton Park Community School

Shortlisted: Education Estates Awards 2024, Inspiring Learning Spaces: Alfreton Park Community School

Shortlisted: Education Estates Awards 2024, Project of the Year Inclusive Design: Alfreton Park Community School

Shortlisted: Education Estates Awards 2024, Project of the Year School: Alfreton Park Community School

Shortlisted: Building Design Social Value Architect of the Year 2023

Longlisted: MacEwen Awards 2024, Architecture for the common Good: Hornsey Library

Shortlisted: Selwyn Goldsmith Awards 2024 for Universal Design: Alfreton Park Community School

Shortlisted: RIBA London Awards 2023: Hornsey Library

Winner: Inspire Future Generations Award 2022, Diversity in Action: Newham Virtual School

Winner: Haringey Design Awards 2021, Better Building Standards: Hornsey Library

Finalist: Architect of the Year Awards 2021: Public Building Architect of the Year