

Curl la Tourelle Head Architecture



Education

Empathise and engage

If there's one thing we've learned makes better buildings, it's empathy. Architecture never happens in isolation and simply by being interested and engaged, we've found it's possible to open up the conversations that connect a scheme to its clients and community.

We ♥ constraints

We believe that the more constraints there are, the better the architecture. If there aren't any constraints, we create them. Challenging sites, existing buildings and complex briefs almost always present incredible opportunities for great design.

Social detail

If a site's constraints guide the bigger design decisions, then it's empathy that informs the smaller, social details. These details frame the human narratives that aren't included in the brief, anticipating specific moments in the users' lives.

Passive future

To limit our environmental impact, we start with what is already there. By manipulating the form and fabric of a building—whether new or existing—we can work with the existing conditions of topography, light and orientation, and harness the natural energy sources offered by air, ground and water.

Mud on our boots

Good architecture is as much about what happens on the building site as it is about what's on the drawing board. By working alongside contractors as well as clients we can ring-fence the ideas and details that matter, championing the quality of the building throughout its construction.

Curl la Tourelle Head



Contents

All through SEND School - **Alfreton Community Park School**

Off Grid Learning- **Revitalising Peckham Rye**

Diversity in learning- **Unity Hub at Graig Park**

Further Education - **Creative Arts Hub, Norwich Hub**

Adaptive Reuse - **Windmill School**

Forest School - **Piory SEND School**

Developing life long skills - **Beckmead College**

Modern Methods of Construction - **East Lane Primary**

Remodelling a Grade II* Listed Building - **Fitzjohn Primary School**

All through SEND specialist school - **Lexeden Spring School**

Early years learning - **Wimbledon Park School**

Alternative provision school - **Pavilion Study Centre PRU**

Campus Style School - **St Michael's Catholic High School**

Providing for pupils and the wider community - **Kidbrook Park School**

Ecologically Sustainable - **Freshwater Biological Association**

Designing within an historic setting - **John Lyon Independent School**

Little school, Big school - **Robert Clack Lymington Fields School**

Learning through collaboration - **Trinity College Dublin**

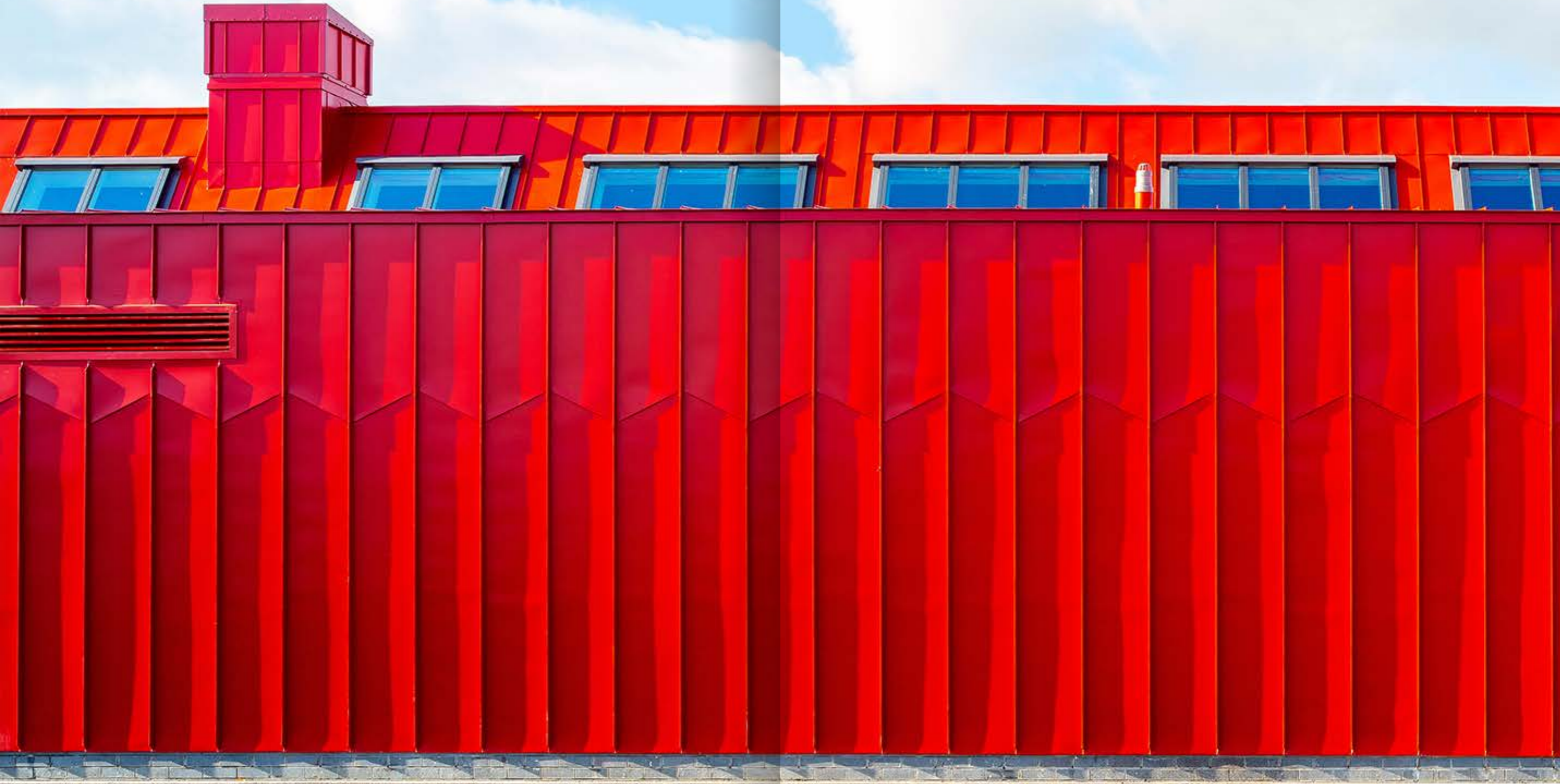
Generating energy from tidal turbines - **Thames Tidal School**

Learning within constraints - **Pop-Up Schools**

Alfreton Park Community School

RIBA 
Architecture.com

NATIONAL
AWARD 2024
WINNER



RIBA NATIONAL AWARDS 2024

Alfreton Park Community Special School

Practice Name Curl la Tourelle Head Architecture
Client Derbyshire County Council
Contractor Henry Brothers
Principal Designer PFB Construction
Structural Engineer Price & Myers LLP
Services Engineer Method Consulting
Landscape Architect Faithful & Gould

Muyiwa Oki PRIBA
RIBA President

RIBA
Architecture.com

RIBA EAST MIDLANDS AWARDS 2024

Regional Award Alfreton Park Community Special School

Practice Name Curl la Tourelle Head Architecture
Client Derbyshire County Council
Contractor Henry Brothers
Principal Designer PFB Construction
Structural Engineer Price & Myers LLP
Services Engineer Method Consulting
Landscape Architect Faithful & Gould

Muyiwa Oki PRIBA
RIBA President

RIBA
Architecture.com

RIBA EAST MIDLANDS AWARDS 2024

Project Architect of the Year 2024 Wayne Head

Project Name Alfreton Park Community Special School
Practice Name Curl la Tourelle Head Architecture
Client Derbyshire County Council
Contractor Henry Brothers
Principal Designer PFB Construction
Structural Engineer Price & Myers LLP
Services Engineer Method Consulting
Landscape Architect Faithful & Gould

Muyiwa Oki PRIBA
RIBA President

RIBA
Architecture.com

RIBA EAST MIDLANDS AWARDS 2024

Building of the Year 2024 Alfreton Park Community Special School

Practice Name Curl la Tourelle Head Architecture
Client Derbyshire County Council
Contractor Henry Brothers
Principal Designer PFB Construction
Structural Engineer Price & Myers LLP
Services Engineer Method Consulting
Landscape Architect Faithful & Gould

Muyiwa Oki PRIBA
RIBA President

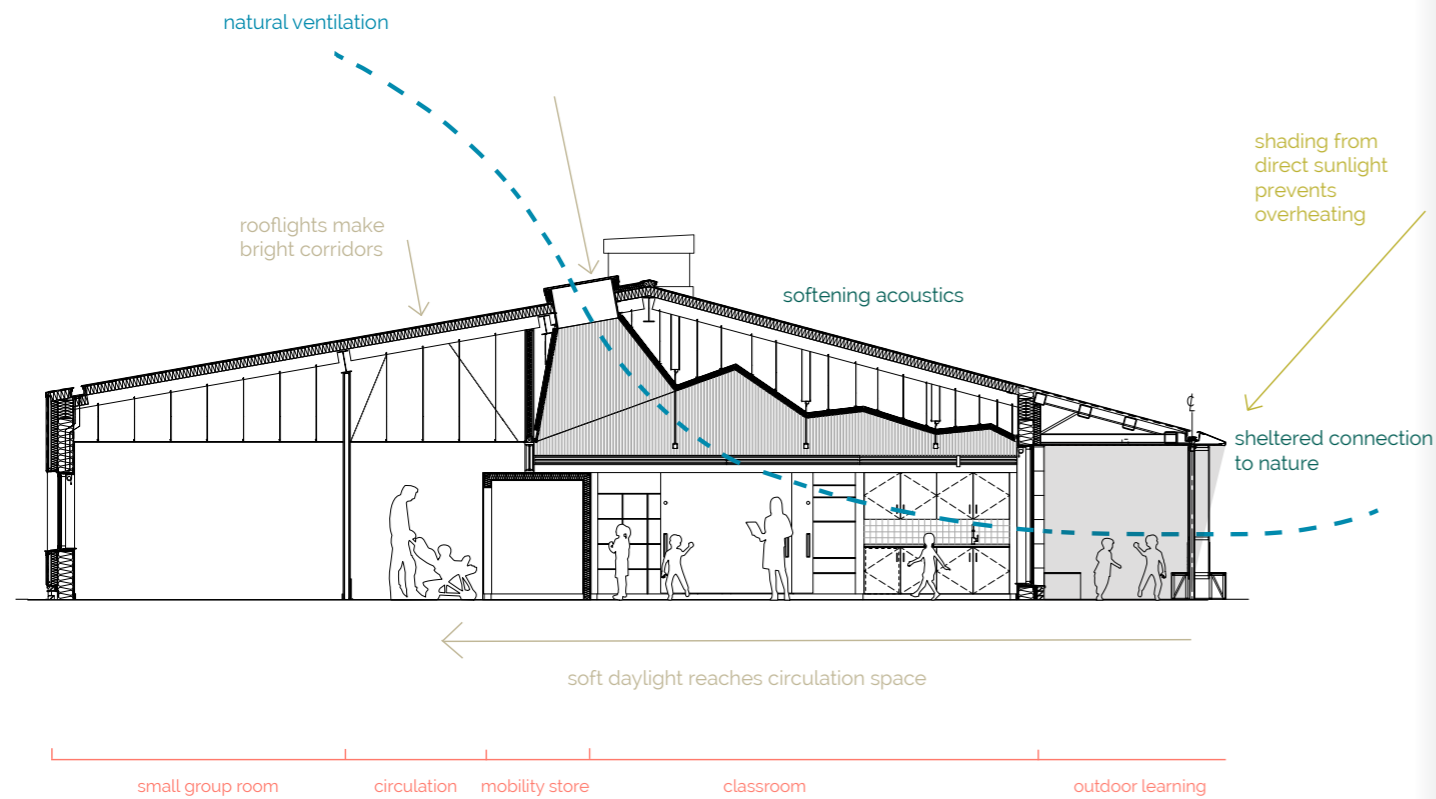
Sponsored by
 EHSmith
Architectural Solutions

RIBA
Architecture.com

'...this school changed my life,'

Ryan Jones,
student at Alfreton Park





‘We have had a reduction in behaviour incidents, we see an improvement in communication from the pupils and generally ... pupils are happier,’

Josie O'Donnell, Headteacher Alfreton



Secure, welcoming and inclusive learning environments

Light filled classrooms

Visibility and surveillance between classrooms and circulation

Sociable circulation

All through SEND School

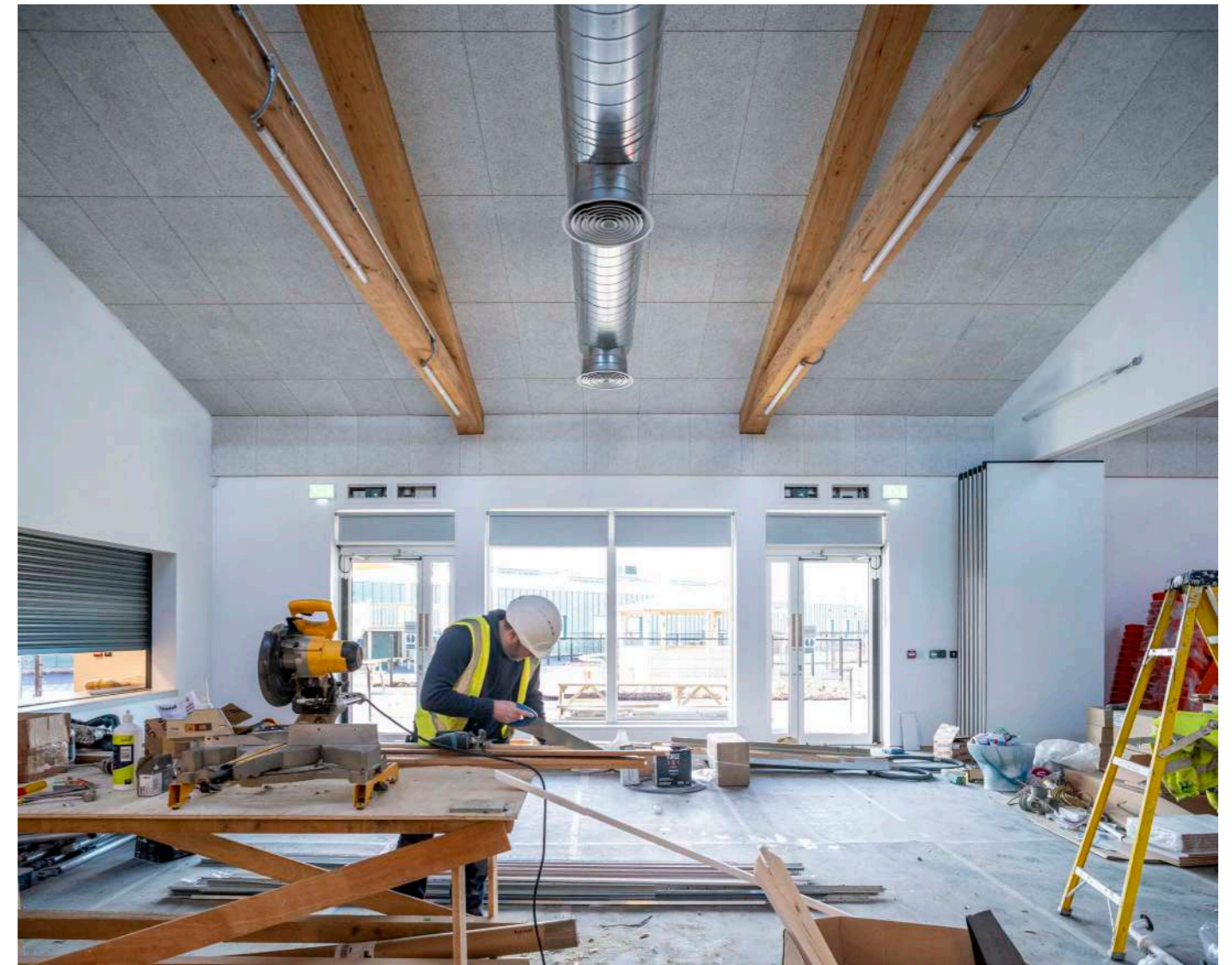
↖ A simple and efficient single storey roof section is used throughout, a generator for elegance in its setting, creating open and light internal spaces for activities





‘The design has clearly worked. Alferton Park School has an upbeat, social atmosphere and is (as the student roll attests) very popular.’

Hugh Pearman, RIBA Editor



RIBA  Architecture.com | NATIONAL AWARD 2024 WINNER

RIBA  Architecture.com | CLIENT OF THE YEAR 2024 SHORTLISTED

RIBA  Architecture.com | EAST MIDLANDS AWARD 2024 WINNER

RIBA  Architecture.com | EAST MIDLANDS PROJECT ARCHITECT OF THE YEAR 2024 WINNER

RIBA  Architecture.com | EAST MIDLANDS BUILDING OF THE YEAR 2024 WINNER

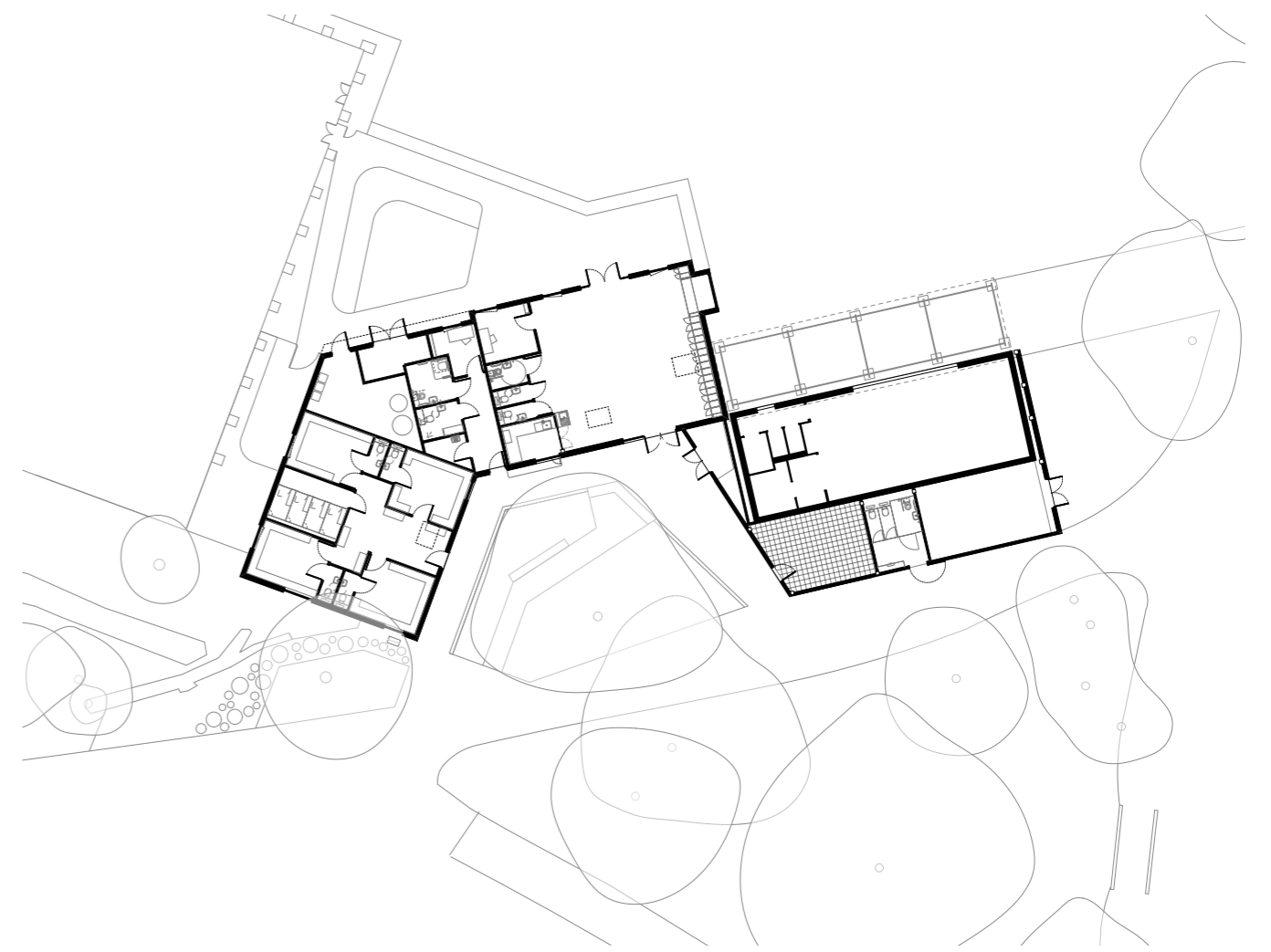
RIBA  Architecture.com | EAST MIDLANDS CLIENT OF THE YEAR 2024 WINNER



All through SEND School

Revitalize Peckham Rye





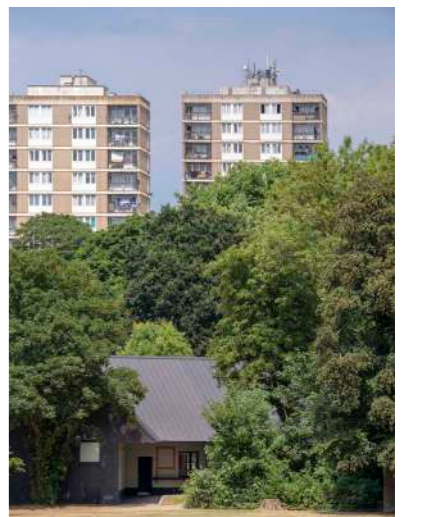
Sensitively arranged around a mature horse chestnut tree, the new-build Peckham Rye Pavilion blends gently into the historic tree-line, looking onto the Park's open playing fields to the south and providing easy access to its facilities.



The pavilion utilises natural light and ventilation where possible, with the tall spaces, skylights and large windows designed to take the best advantage of this.



The design references London's picturesque Victorian park pavilions and features colourful and playful decor inside and out.



Improving public facilities around the parkland area

Structural CLT and finishes

Light and airy spaces

Easy access and visibility

Off grid learning





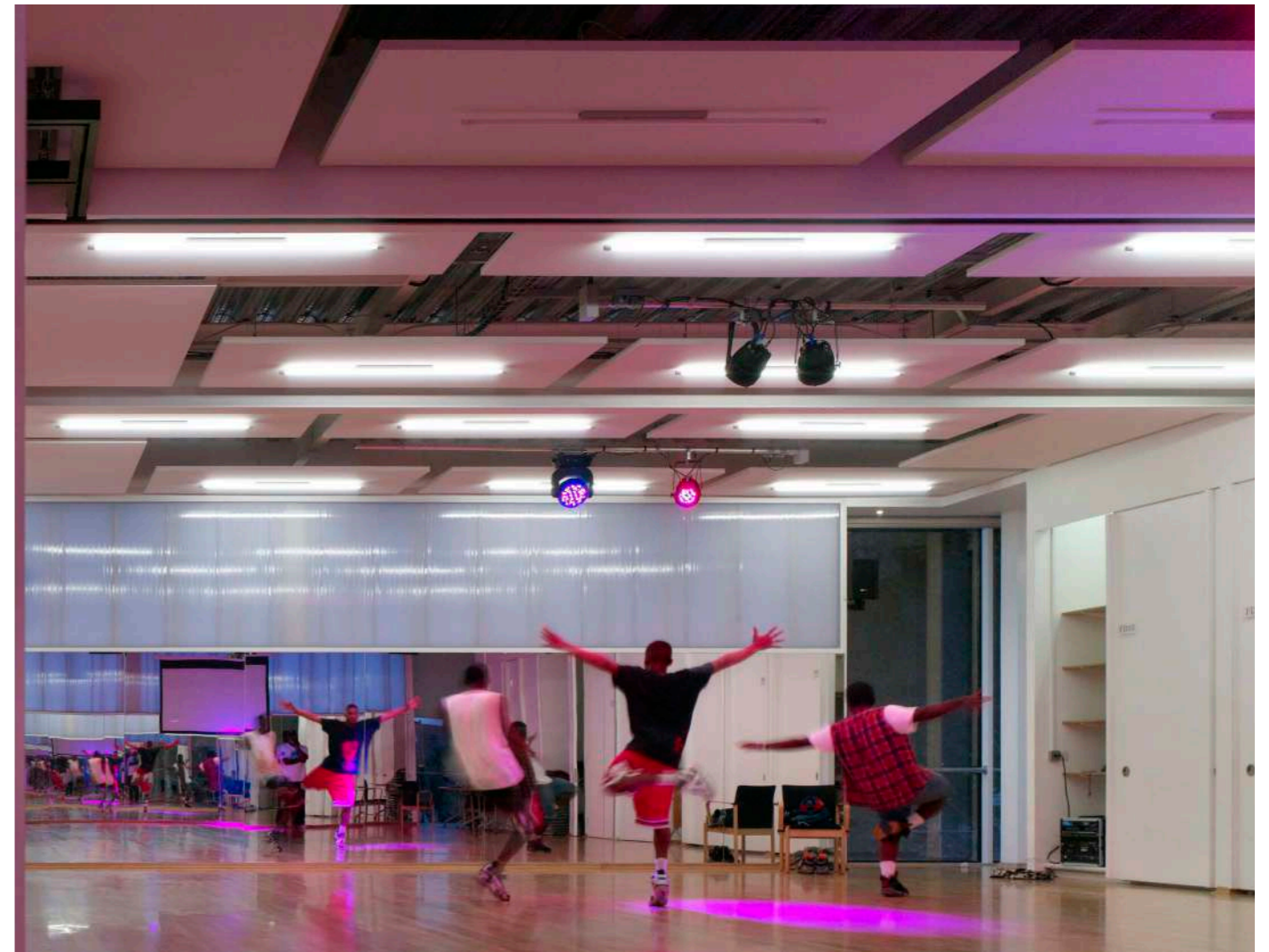
“The new pavilion in Peckham Rye Park looks fantastic within the landscape. The shape and lines it makes are wonderful close up but when viewed from further away do not detract from the views of the park it sits in.”

Will Walpole, Environment and Social Regeneration Manager, LB Southwark



Unity Hub at Graig Park





Designed collectively with the Hub's young people, the building features a series of functional and dynamic spaces ranging from a climbing cave to dance studio and media labs including a space for reflection and an outdoor multi-sport games surface.

The extended existing building has been transformed with the backlit polycarbonate cladding to unify new and existing and gain a role within the community. Colour change LED lighting can be programmed by the Hub's young people and glows, beacon-like, in its park-edge setting.

Award winning

Series of functional, dynamic and flexible informal learning spaces

Youth led design

Visibility and surveillance from surrounding park

Diversity in learning



“The building is truly a manifestation of the ethos and intention of Enfield’s Youth and Family Support Service to reach out to young people in a deprived area of North London.”

Creative Arts Hub, Norwich





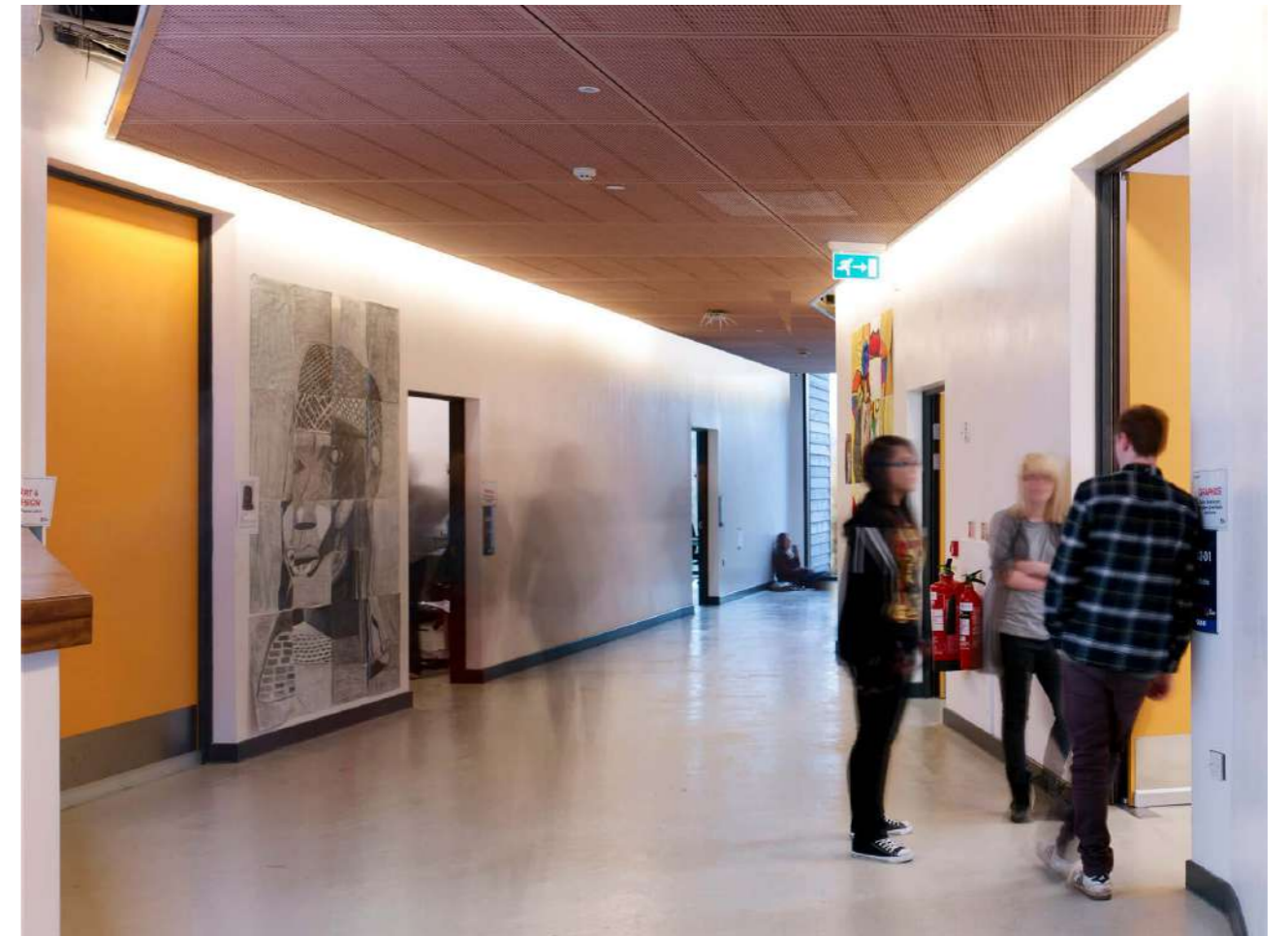
Rectilinear, black timber clad pavillion

Set in front of a veil of trees

Gallery spaces illuminated by northern light

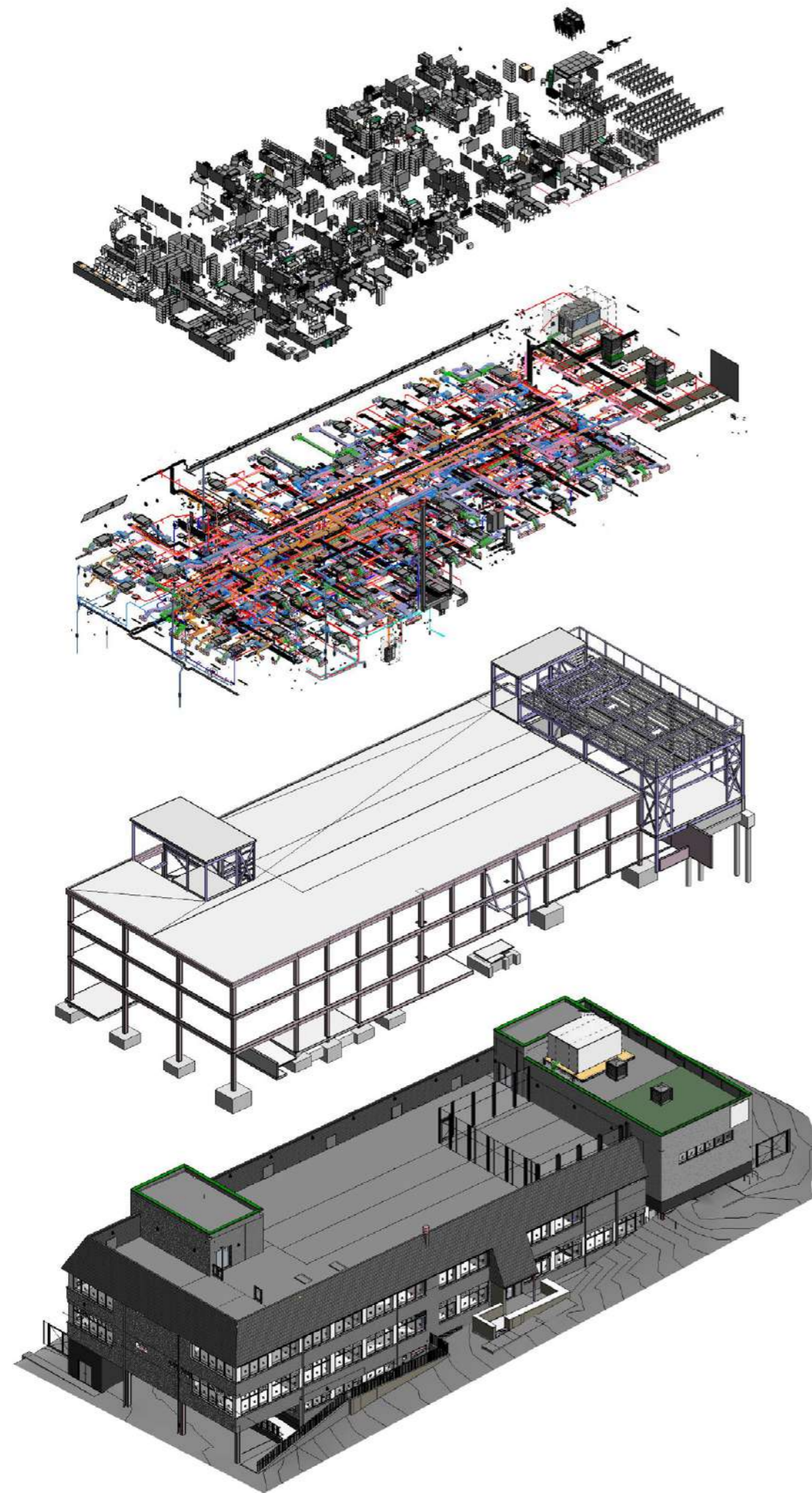
Further Education





Windmill School, Barnet



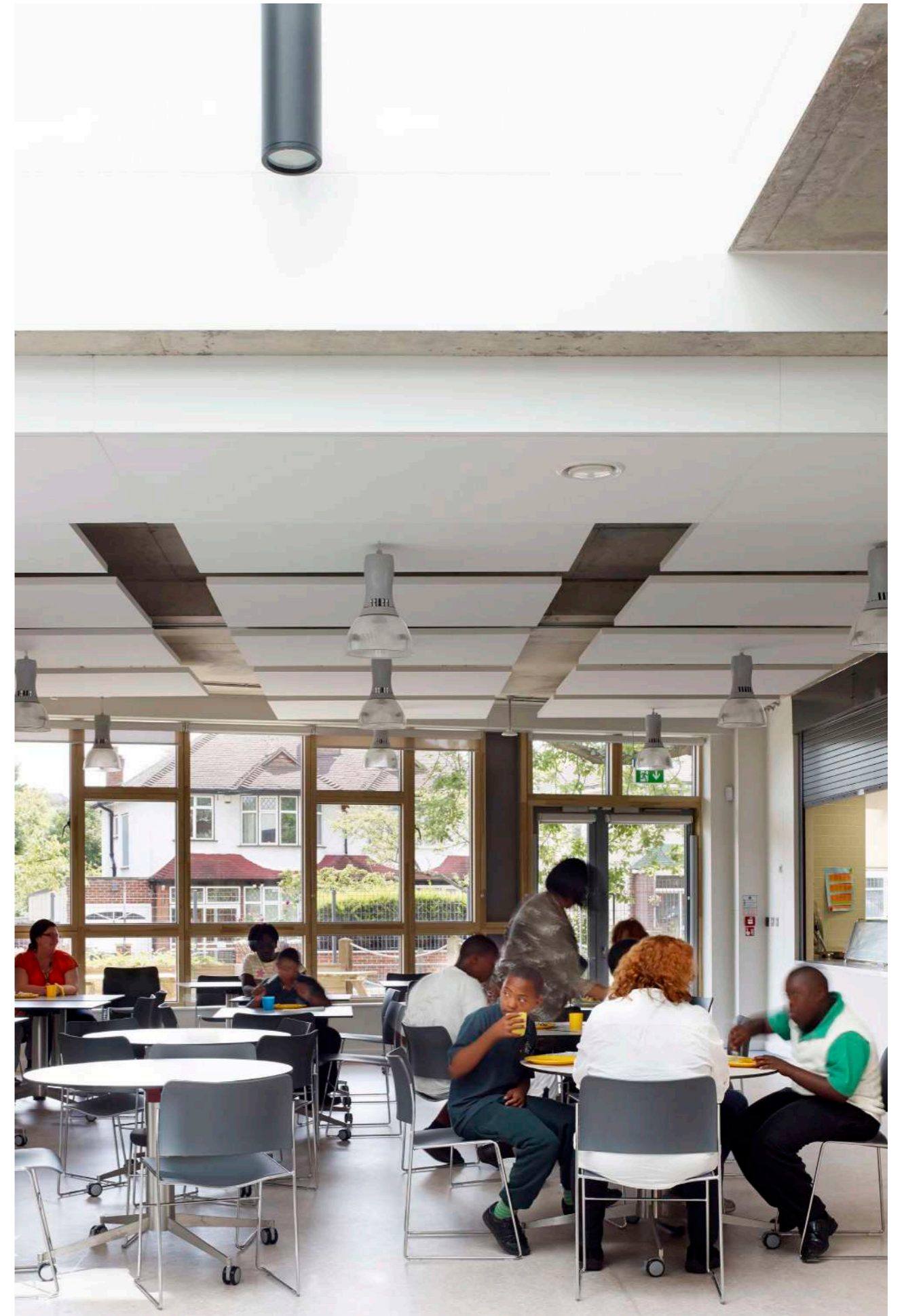


The newly opened school within its residential context. The roof has been adapted as an open air playground and vegetable garden. The PVs have been installed in the slanted sidings which also act as tall parapet for the children playing on the roof.

Adaptive Reuse

Priory School, Croydon





Forest School



Outdoor learning and social activities

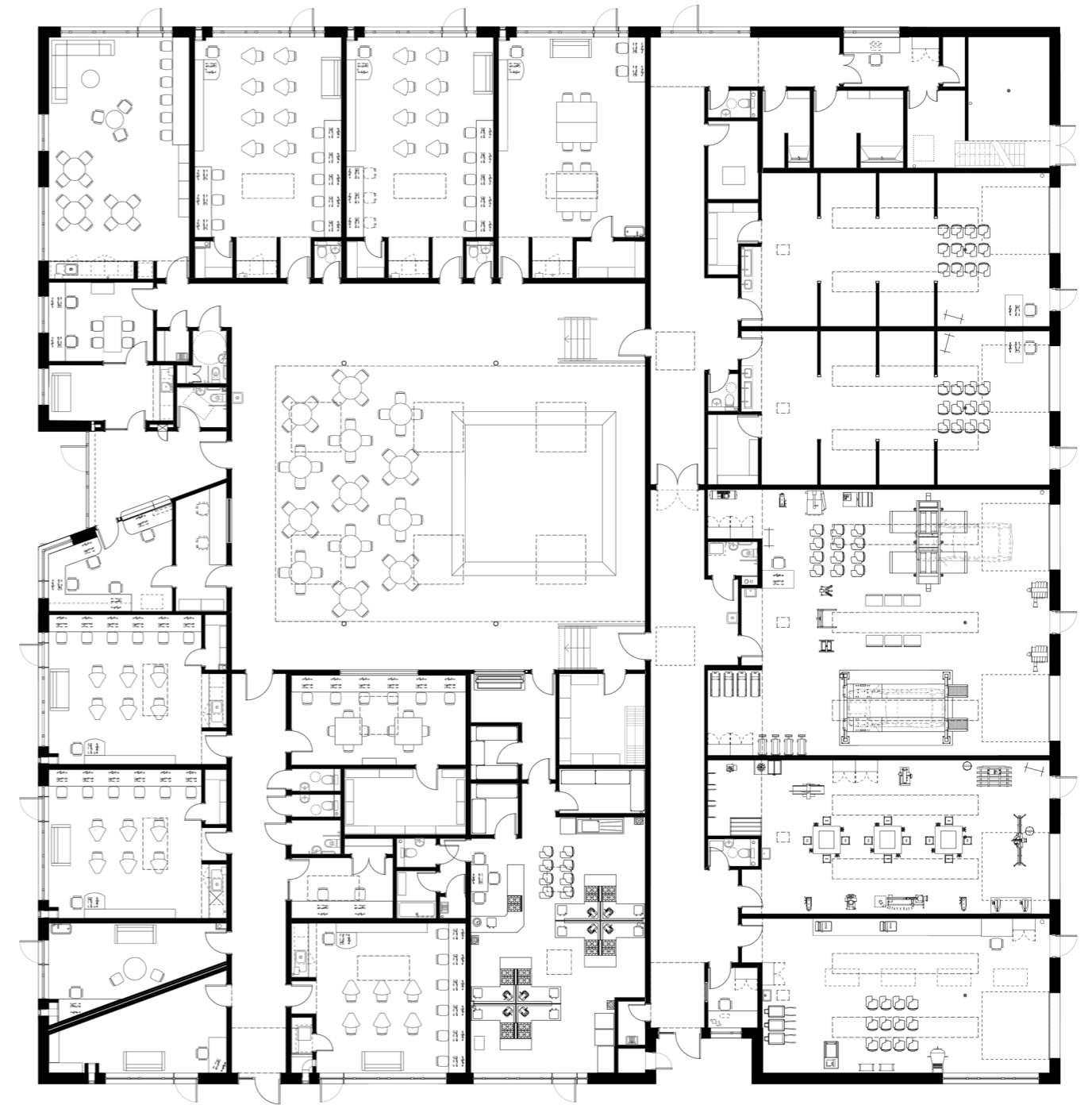
Skywalk through the tree canopy to mature woods

Extended roof with play terraces and multi-games areas

Forest School







↑
Proposed Ground Floor Plan with its
central courtyard

Vocational college for young people

People led design process

Central Social zone with flexible activity spaces

High thermal performance

Developing life long skills

East Lane Primary, Brent

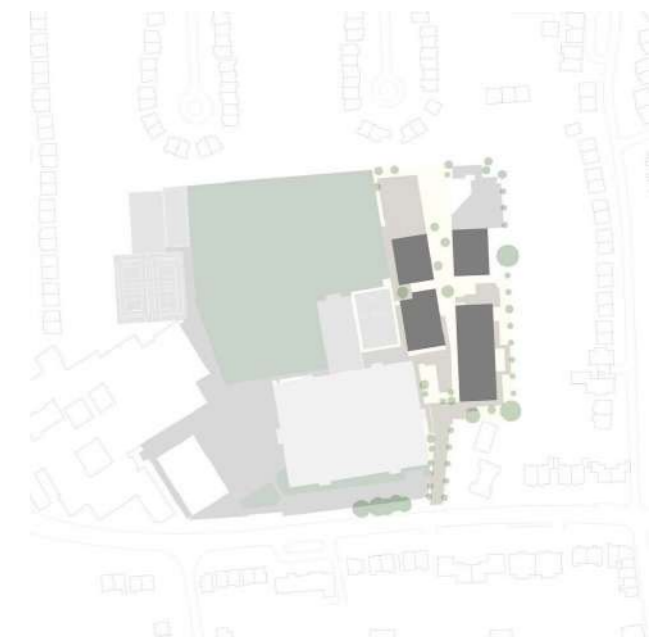




The outdoor sheltered and vegetated circulation space between the school blocks



Proposed School Site Plan within its residential context



8 Design and Build primary schools across Brent

Unique and characterful designs

Modular design allowing flexibility and variation

In keeping with the vernacular

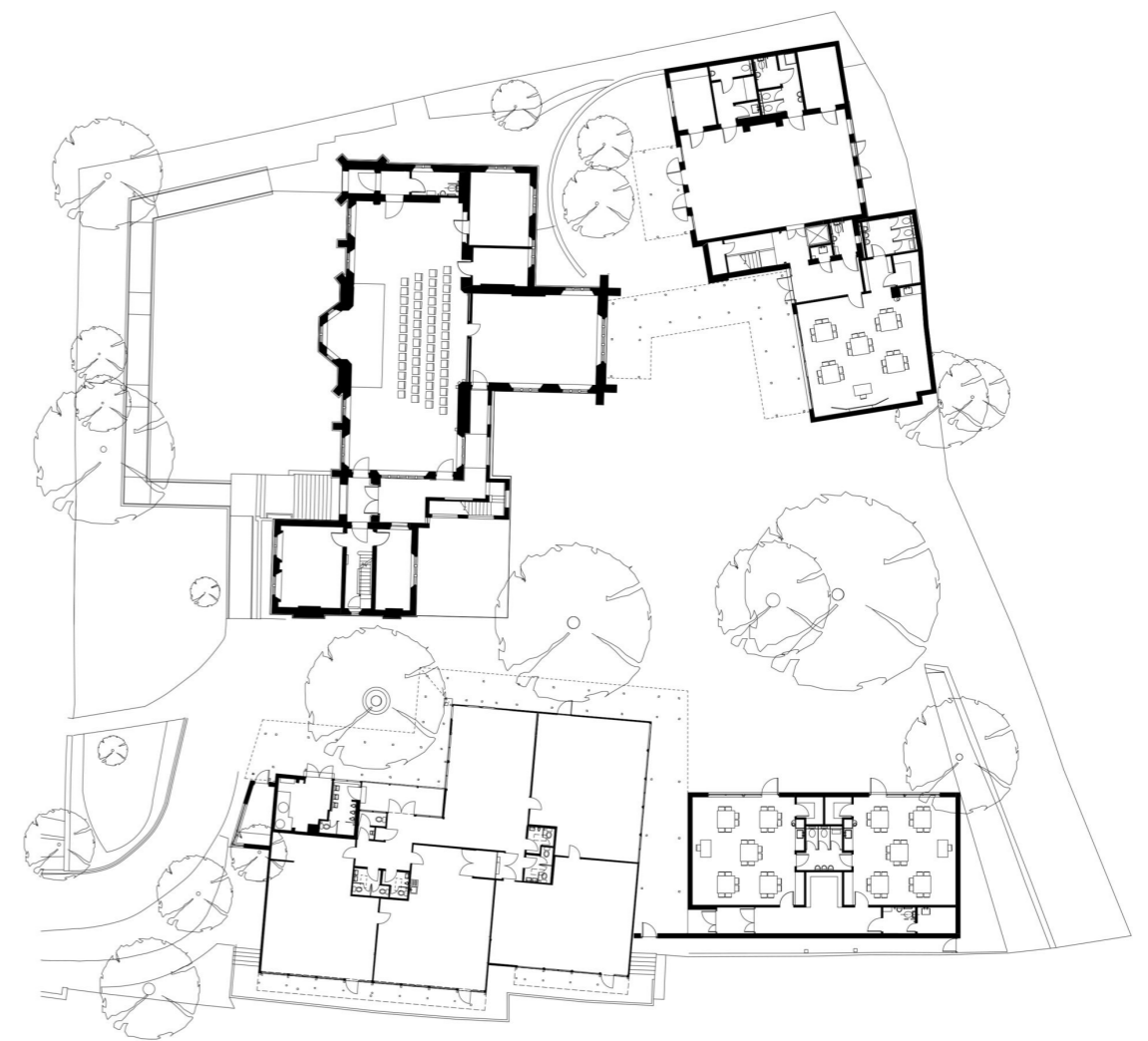
Modern Methods of Construction





“Everyone in the whole school community is proud of our school. It has an amazing atmosphere which is felt every time you are here.”

Rob Earrey, Head Teacher.



RIBA Award Finalist

Full classroom fit out

High thermal performance, sustainable design

Remodelling a Grade II listed building

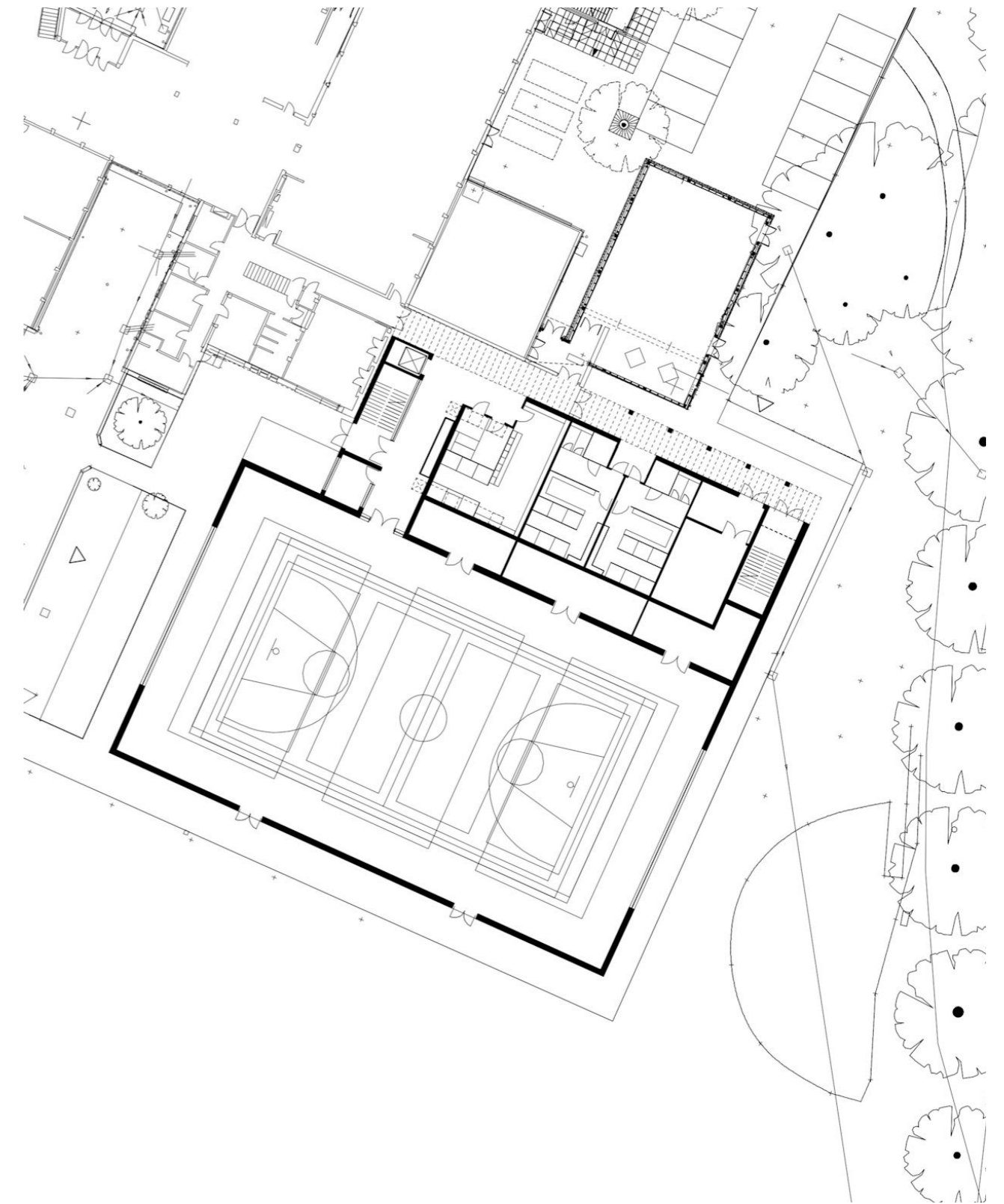
St Michael's Catholic High School





“You have been imaginative and resourceful, and a pleasure to work with.”

John Murphy, previous Head Teacher.



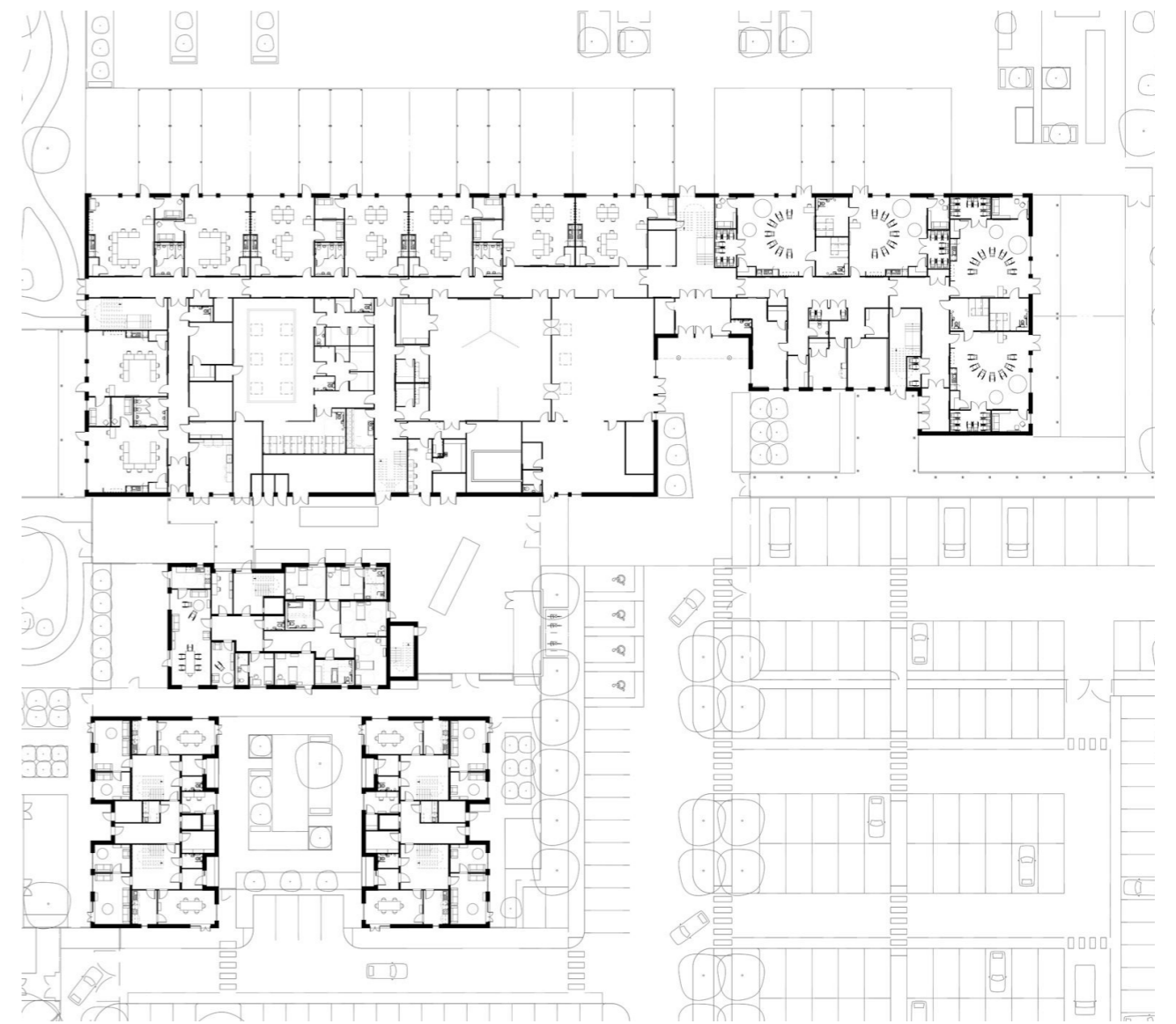
Masterplanning for new build and refurbishments of campus style school

BCSE awarded "Best Sport Provision"

Campus style school

Lexden Spring School, Colchester





↑
Class bases at rear of the building shields them from traffic noise and allows direct access to protected external areas

←
Internal courtyards provide daylight and natural ventilation into the deep plan of the building. Most classrooms face South, taking advantage of solar gain

New build through SEND school
Teaching School & Boarding Accommodation
Protected, dedicated "outdoor classroom"

All through SEND specialist school

Wimbledon Park School





Interwoven indoor and outdoor learning spaces

Operational net zero buildings

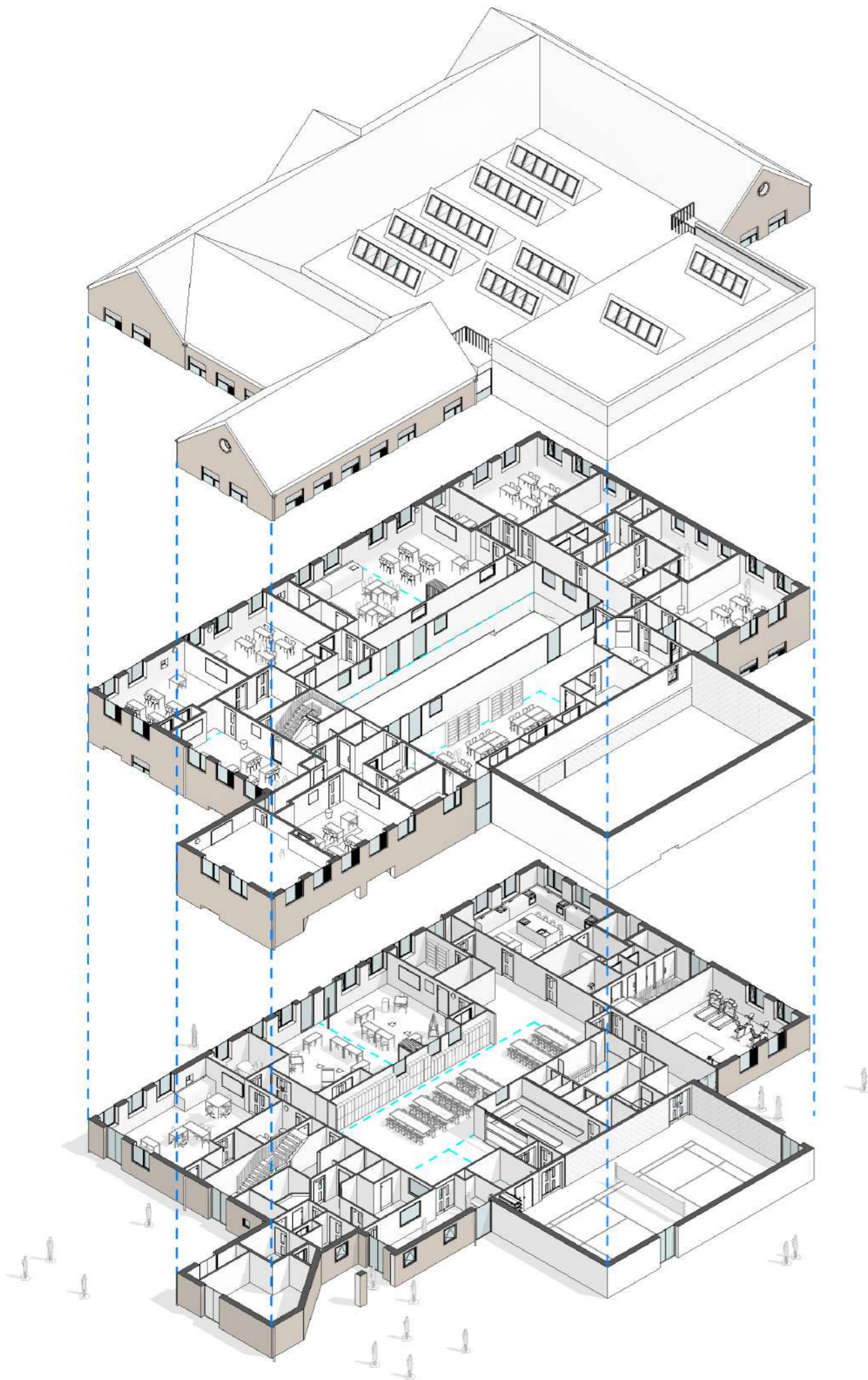
Thermally efficient retrofitted buildings

Sustainable SUDs strategy

Early years learning

Pavilion Study Centre Pru





↑
Proposed Elevations
←
Exploded axonometric

DfE placement accommodation with intervention and respite learning spaces

Designed to DfE Output specification

Classes open up to central courtyard offering passive surveillance

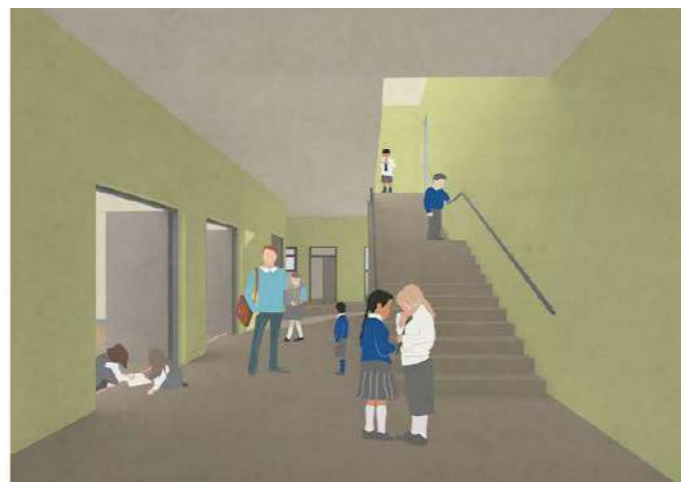
High thermal performance

Alternative provision school

Kidbrooke Park School, Woolwich

Kidbrooke Park





Large, high quality composite aluminium and timber windows provide plentiful natural light to teaching spaces, complemented by the contextual brick



Early studies of interiors and the main staircase

High quality, sustainable educational facilities for everyday use

Learning for different age groups

Providing for pupils and the wider community



Abbotsfield School for Boys



“We have been impressed with their team work and sympathetic understanding of the school’s needs, as well as their knowledge of the constraints that exist when dealing with a working school environment.”

Steve Outen, Bursar, Abbotsfield School.



Maximizing outdoor playspace.

Corridors as physical and acoustic barriers

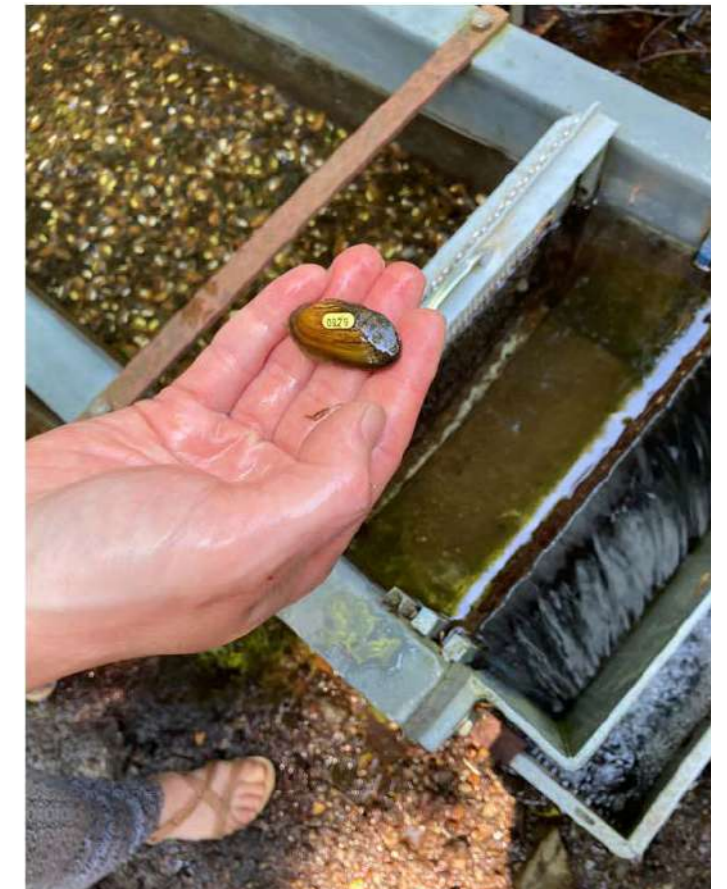
Engaging pupils throughout design stages

Orientation of building to maximise daylight

Designing with people

Freshwater Biological Association





‘From the get-go, I have found CLTH to be really focused on understanding our organisational ambitions and then turning that into an inspiring architectural vision.’

Simon Johnson
Executive Director, Freshwater Biological Association

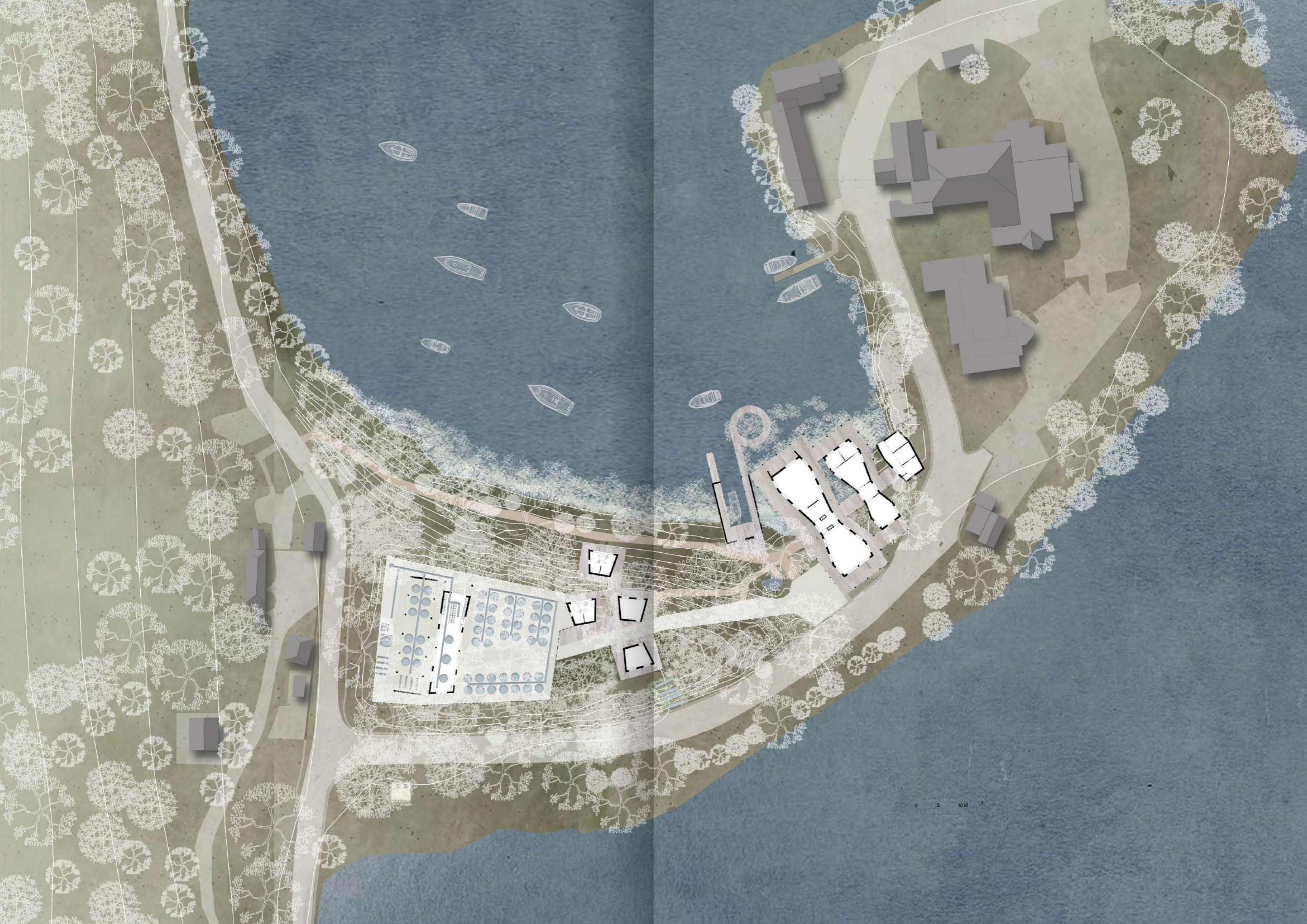
Habitat restoration and water quality improvements

Sensitive design in the Lake District National Park

Sustainable sanitation and water management solutions

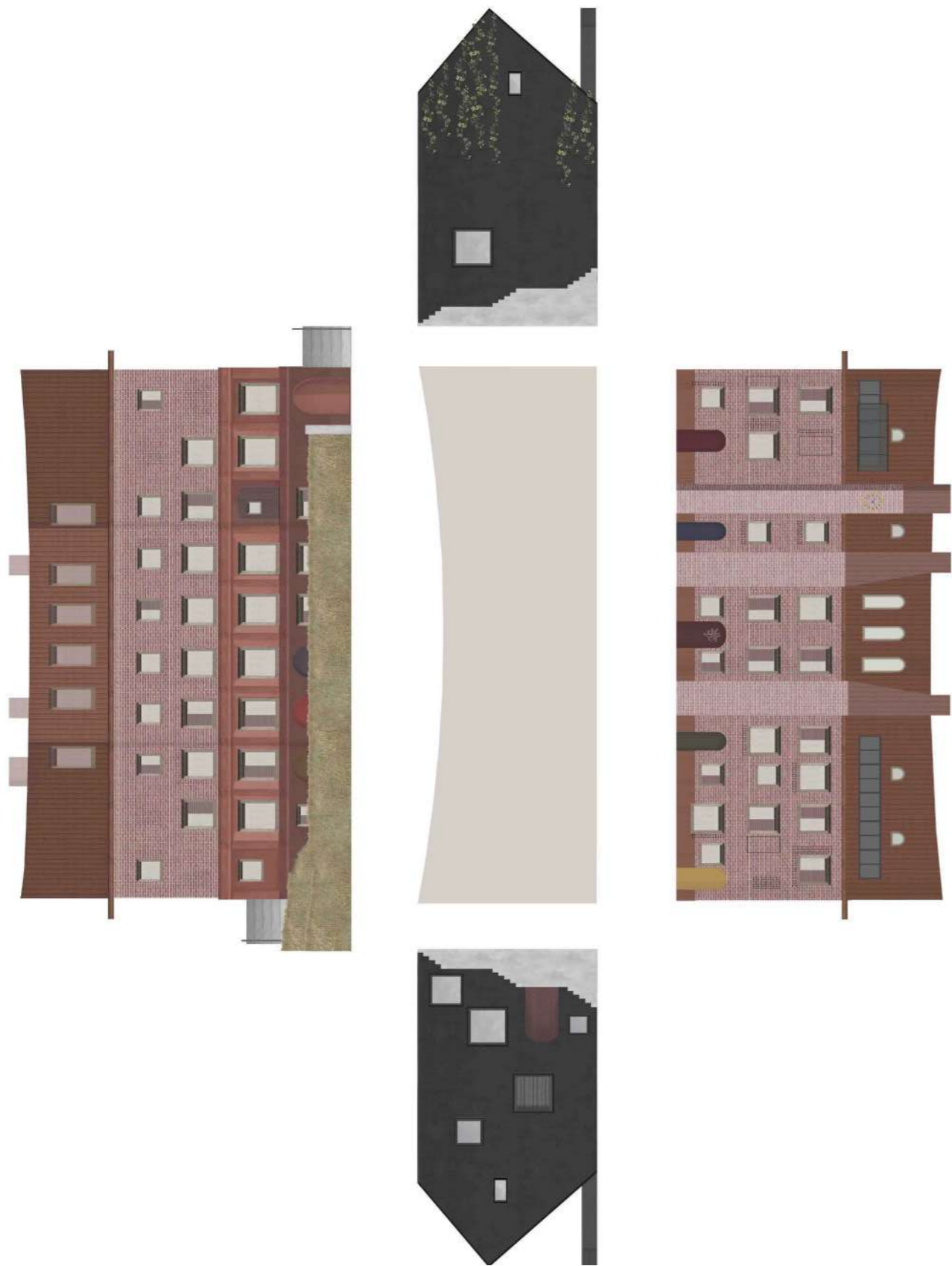
Protecting endangered freshwater species

Ecological Sustainability



John Lyon Independent School





Designing within world heritage site and listed buildings

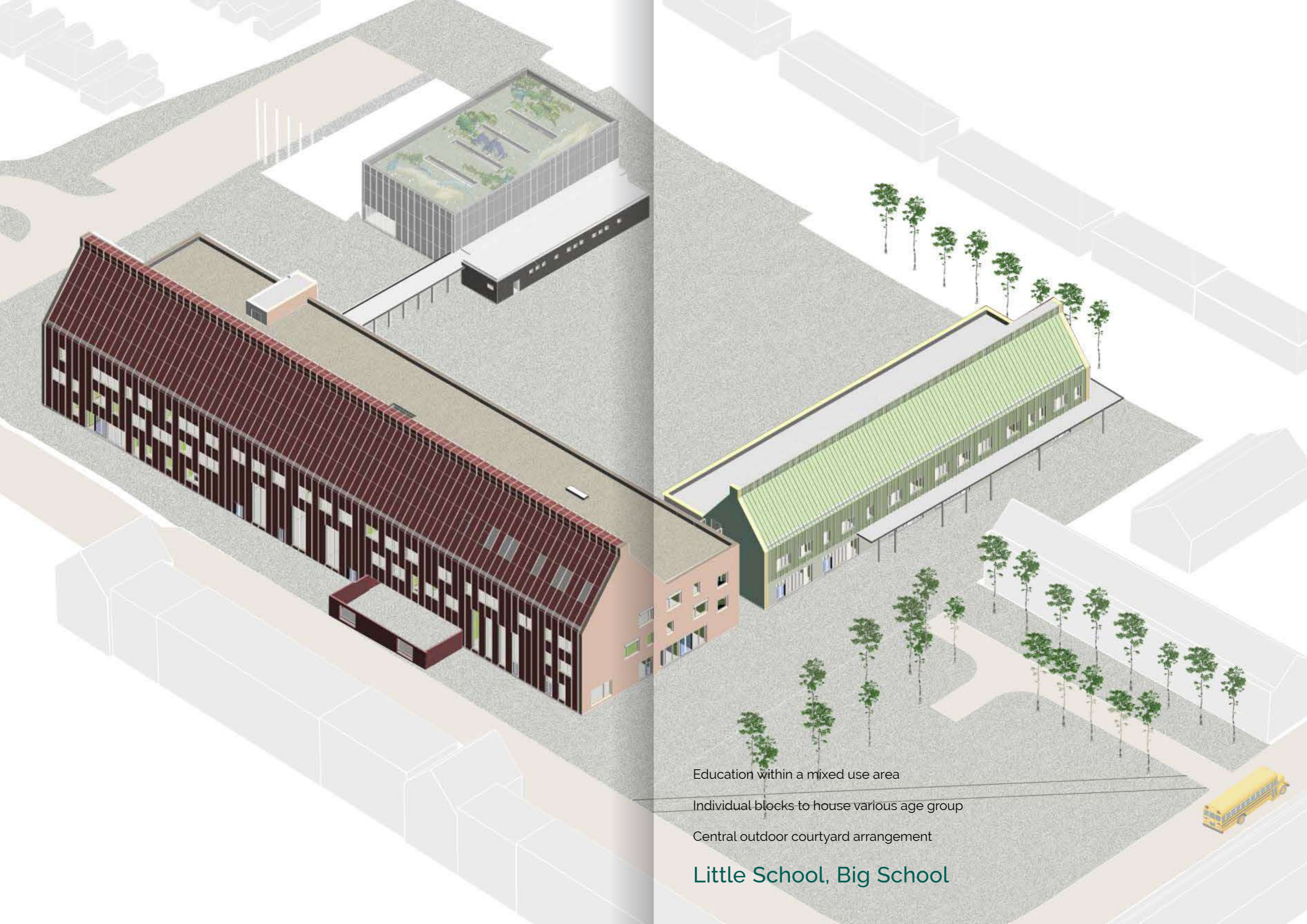
New STEAM centre

Forward thinking learning environment

Designing within an historic setting

Robert Clack Lymington Fields School





Education within a mixed use area

Individual blocks to house various age group

Central outdoor courtyard arrangement

Little School, Big School

Trinity College Dublin





Designing flexible but individual spaces

Developing various social environments

Exploring potential for space across 6 college buildings

Learning through collaboration



Thames Tidal School

Unbuilt, Built, Imagined



NO
UNAUTHORISED
ENTRY



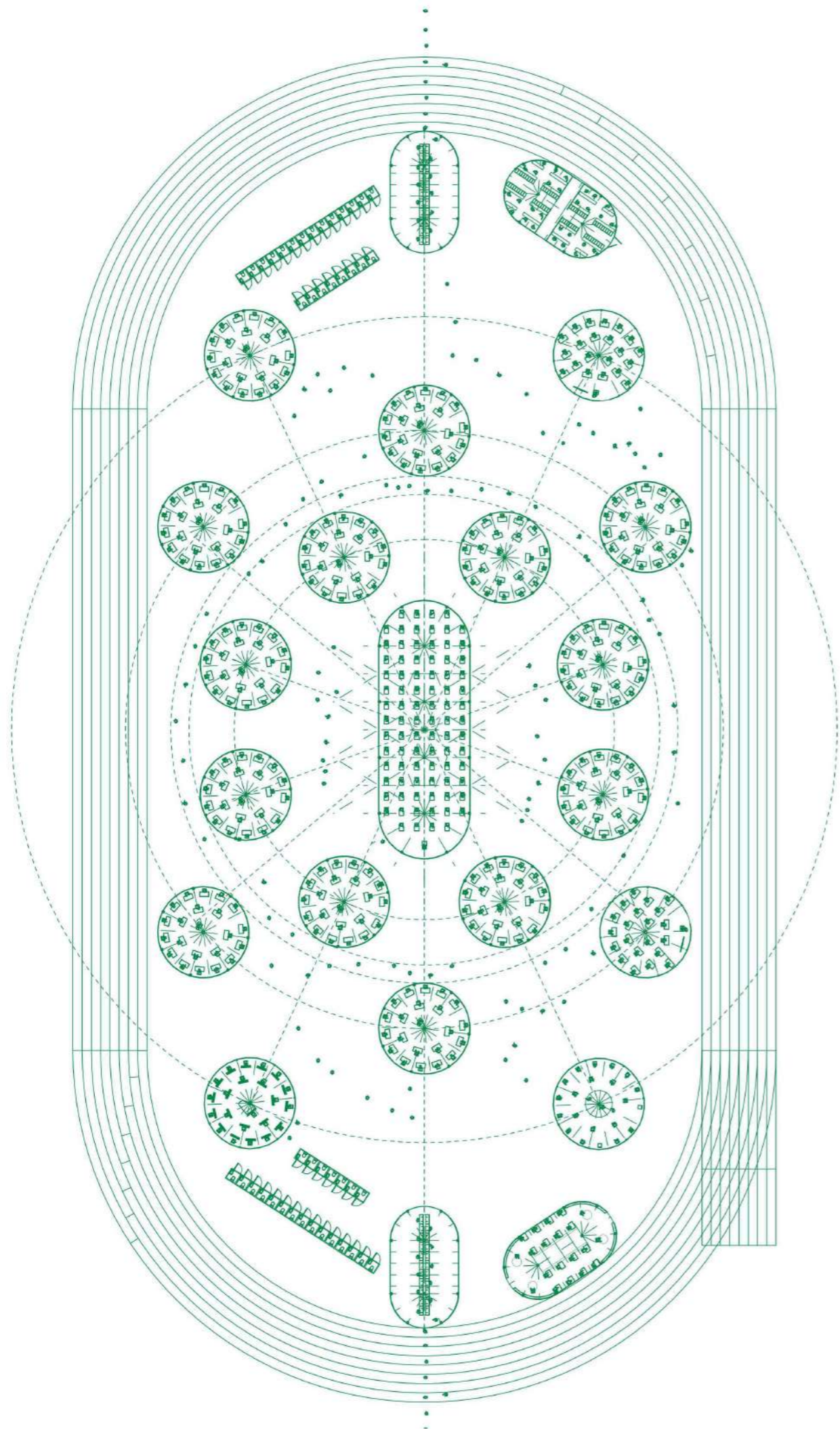
Exemplar low carbon construction technologies

Low embodied energy generator

Generating energy from tidal turbines

Pop Up Schools





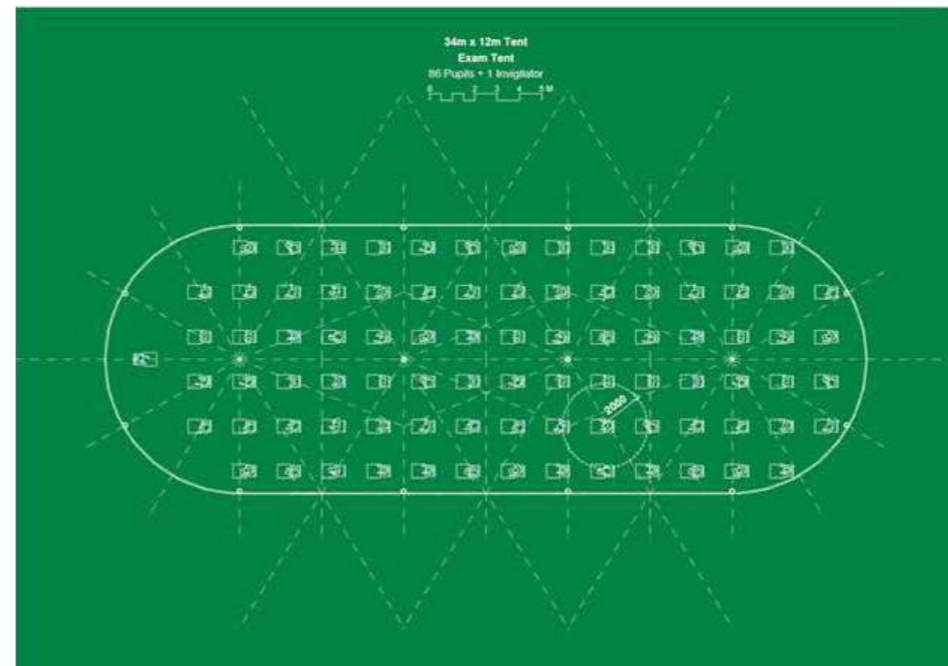
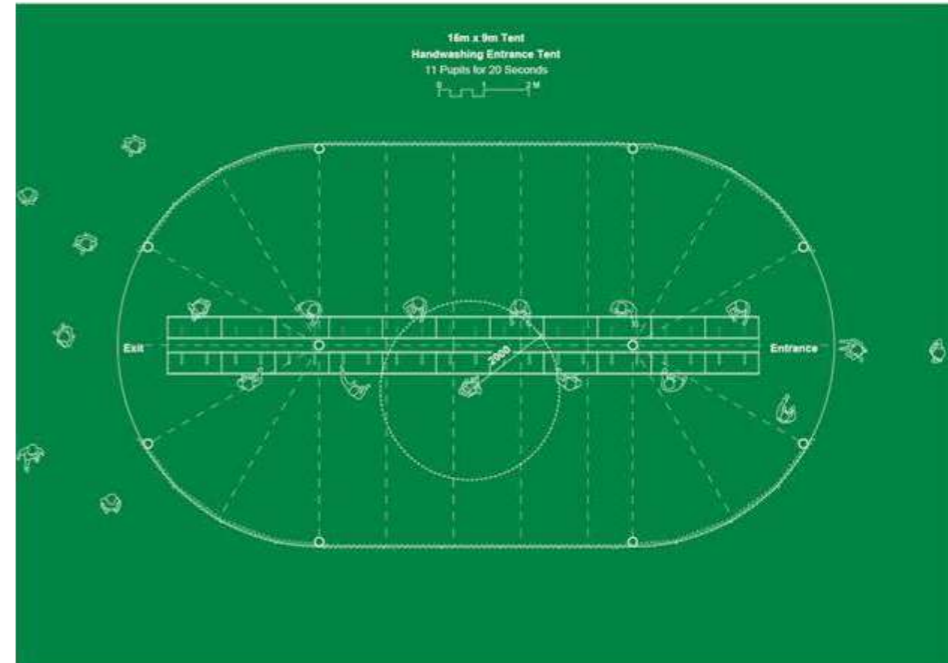
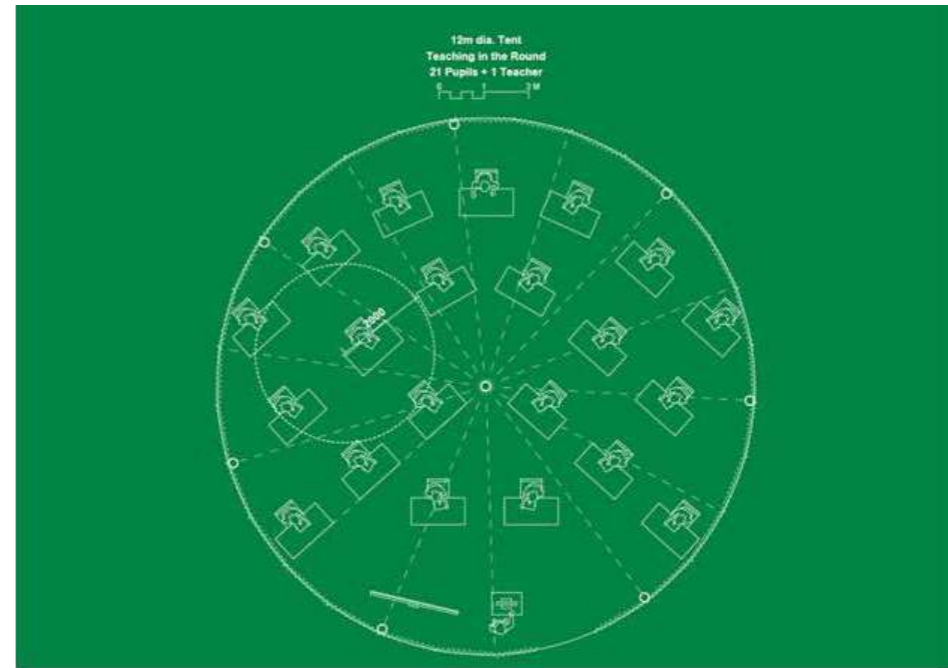
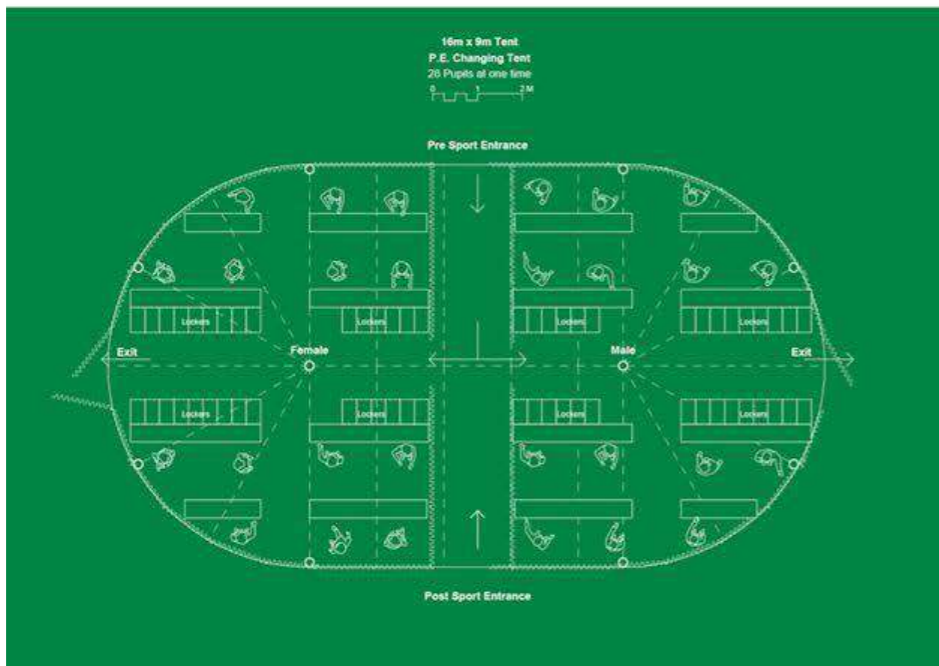
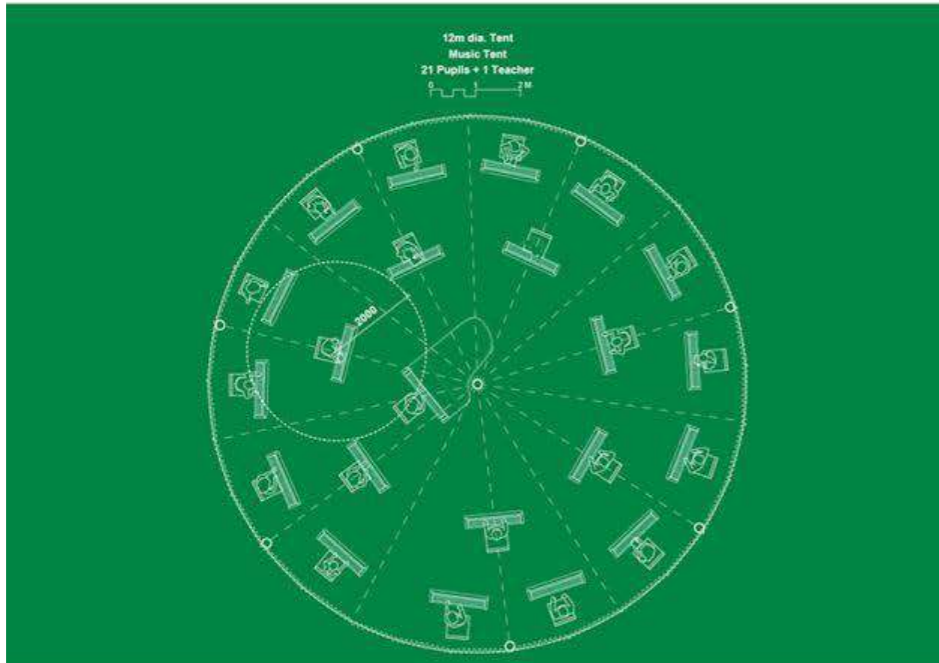
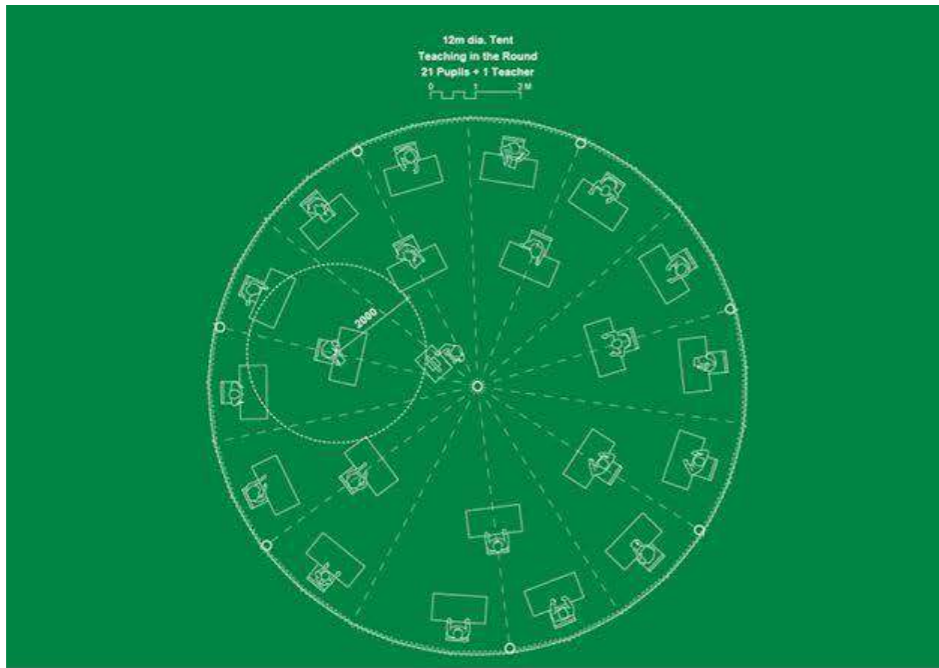
Providing solutions in challenging times.

Promoting well being and safe learning environment

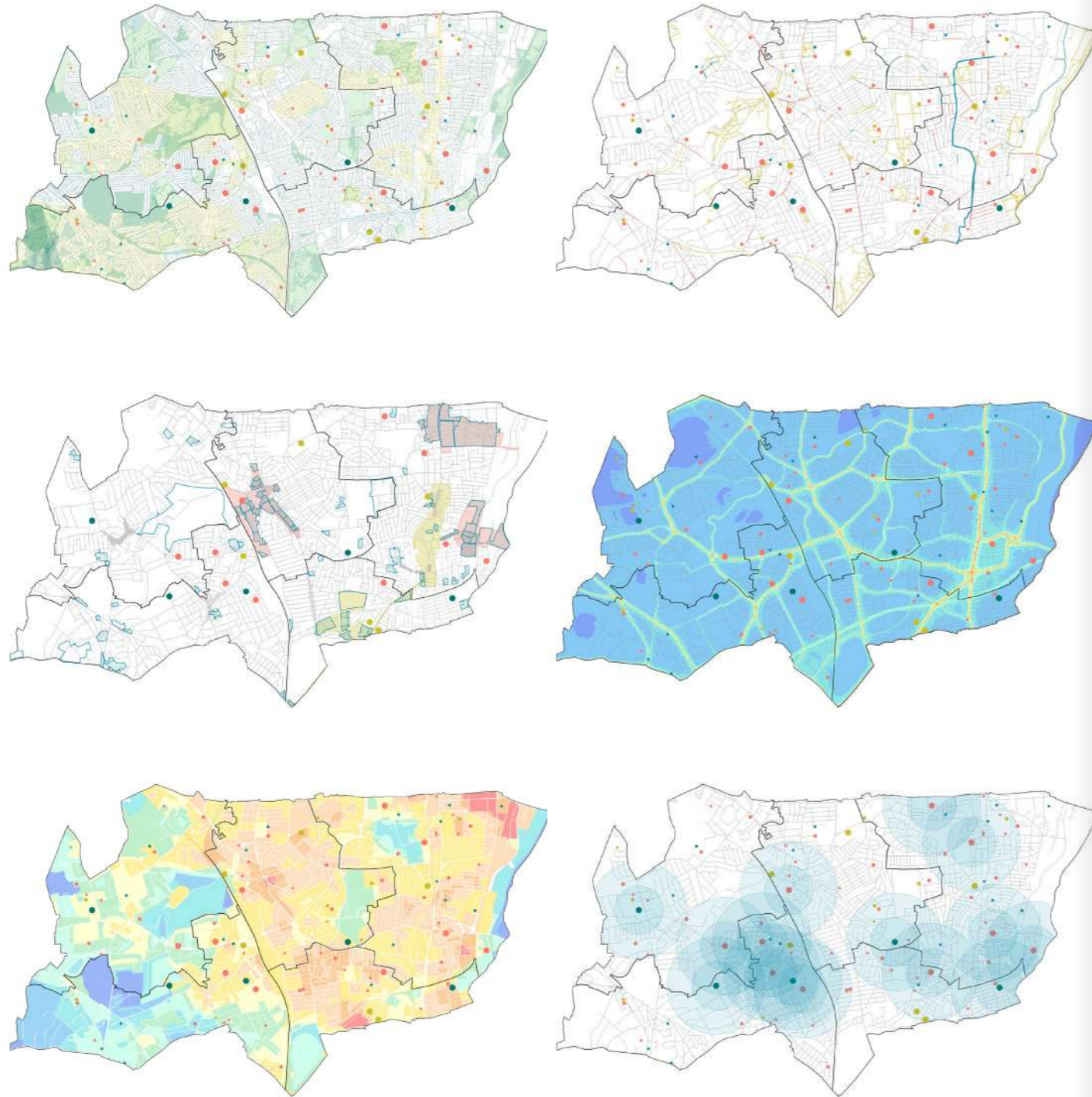
Reusing available resources in periods of dormancy

Temporary and adaptable methods of learning within outdoor settings

Learning within constraints



Haringey Education Sites Masterplan



Identifying opportunities for improvement, efficiency and sufficiency of existing school estates

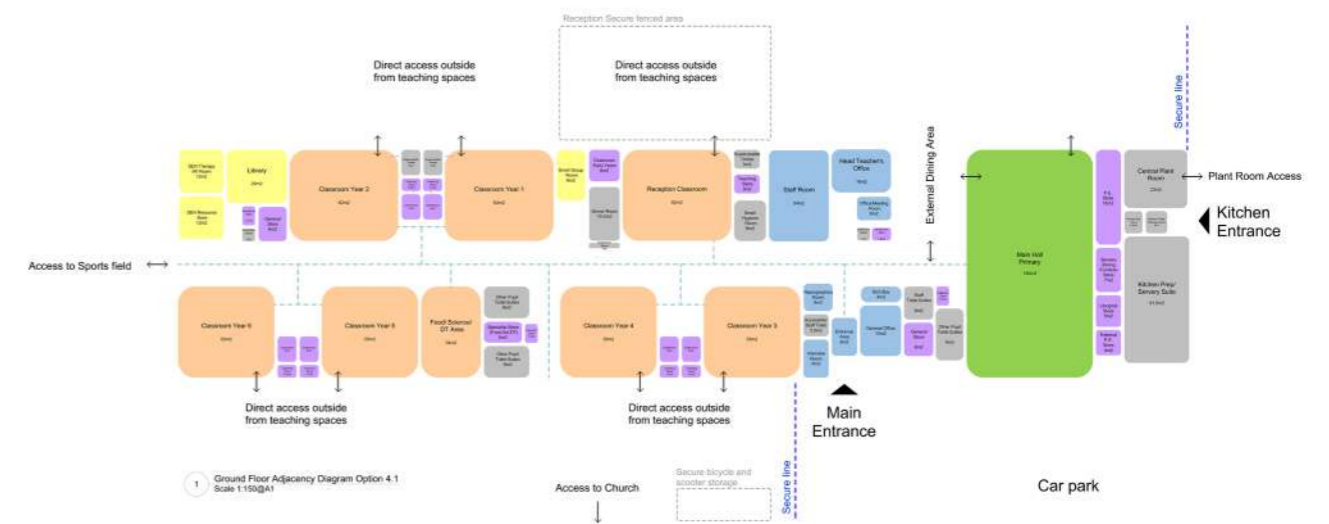
Considering the needs of Mainstream, Alternative Provision and SEND education delivery

Implementing new SEND and AP strategy within the Borough of Haringey

High quality, sustainable educational facilities for everyday use

Strategic masterplanning for next 20 years

DfE Schools Technical Advisors



Operational net zero buildings

Improving thermal efficiency through retrofit of existing buildings

Technical Advisors for 12+ Schools

Curl la Tourelle Head Architecture

Education Projects

Podium Level
Shakespeare Tower
Barbican
London EC2Y 8DR
mail@clth.co.uk
+44 (0)20 7267 0055

Further practice studios at
Silver St, Deal
& The Paragon, Bath.

Latest News:
www.clth.co.uk/news

CLTH are signatories of the RIBA Inclusion Charter and are fully committed to making architecture more inclusive.

Winner: RIBA National Award 2024: Alfreton Park Community School

Winner: RIBA East Midlands Building of the Year: Alfreton Park Community School

Winner: Civic Trust Awards 2024: Alfreton Park Community School

Finalist: Building Awards 2024 - Delivering Social Value

Finalist: London Construction Awards 2024 - Excellence in Community Engagement: Your Bruce Grove

Winner: RIBA East Midlands Project Architect of the Year 2024

Winner: RIBA East Midlands Client of the Year 2024

Winner: RIBA East Midlands Award 2024

Winner: Civic Trust Awards 2024, Special Education Award: Alfreton Park Community School

Winner: AJ Architecture Awards 2023, Education: Alfreton Park Community School

Shortlisted: Building Awards 2024, Delivering Social Value: Alfreton Park Community School

Shortlisted: Education Estates Awards 2024, Inspiring Learning Spaces: Alfreton Park Community School

Shortlisted: Education Estates Awards 2024, Project of the Year Inclusive Design: Alfreton Park Community School

Shortlisted: Education Estates Awards 2024, Project of the Year School: Alfreton Park Community School

Shortlisted: Building Design Social Value Architect of the Year 2023

Longlisted: MacEwen Awards 2024, Architecture for the common Good: Hornsey Library

Shortlisted: Selwyn Goldsmith Awards 2024 for Universal Design: Alfreton Park Community School

Shortlisted: RIBA London Awards 2023: Hornsey Library

Winner: Inspire Future Generations Award 2022, Diversity in Action: Newham Virtual School

Winner: Haringey Design Awards 2021, Better Building Standards: Hornsey Library

Finalist: Architect of the Year Awards 2021: Public Building Architect of the Year