

# Curl la Tourelle Head Architecture



Social Value

## Empathise and engage

If there's one thing we've learned makes better buildings, it's empathy. Architecture never happens in isolation and simply by being interested and engaged, we've found it's possible to open up the conversations that connect a scheme to its clients and community.

## We ♥ constraints

We believe that the more constraints there are, the better the architecture. If there aren't any constraints, we create them. Challenging sites, existing buildings and complex briefs almost always present incredible opportunities for great design.

## Social detail

If a site's constraints guide the bigger design decisions, then it's empathy that informs the smaller, social details. These details frame the human narratives that aren't included in the brief, anticipating specific moments in the users' lives.

## Passive future

To limit our environmental impact, we start with what is already there. By manipulating the form and fabric of a building—whether new or existing—we can work with the existing conditions of topography, light and orientation, and harness the natural energy sources offered by air, ground and water.

## Mud on our boots

Good architecture is as much about what happens on the building site as it is about what's on the drawing board. By working alongside contractors as well as clients we can ring-fence the ideas and details that matter, championing the quality of the building throughout its construction.

## Curl la Tourelle Head



# Contents

All through SEND School - **Alfreton Community Park School, Derbyshire**

Off Grid Learning- **Revitalising Peckham Rye, Listed Parklands**

Public Wellbeing and Tidal Pool - **Walpole Bay, Margate, Grade II**

Stronger Together - **Yours Bruce Grove**

Designing High Quality Homes - **Military Road, Housing for the Homeless**

Back to Front - **Social Housing in Sutton**

Ecologically Sustainable - **Freshwater Biological Association, Lake Windermere**

Re-thinking space - **Newham Virtual Schools**

Developing lifelong skills- **Gordon Brown Centre**

Demountable Space - **Pop Up Schools**

Equipping the Future - **City Lions - Young People**

# Alfreton Park Community School

RIBA  
Architecture.com

NATIONAL  
AWARD 2024  
WINNER



# RIBA NATIONAL AWARDS 2024

## Alfreton Park Community Special School

Practice Name Curl la Tourelle Head Architecture  
Client Derbyshire County Council  
Contractor Henry Brothers  
Principal Designer PFB Construction  
Structural Engineer Price & Myers LLP  
Services Engineer Method Consulting  
Landscape Architect Faithful & Gould

Muyiwa Oki PRIBA  
RIBA President

RIBA   
Architecture.com

# RIBA EAST MIDLANDS AWARDS 2024

## Regional Award Alfreton Park Community Special School

Practice Name Curl la Tourelle Head Architecture  
Client Derbyshire County Council  
Contractor Henry Brothers  
Principal Designer PFB Construction  
Structural Engineer Price & Myers LLP  
Services Engineer Method Consulting  
Landscape Architect Faithful & Gould

Muyiwa Oki PRIBA  
RIBA President

RIBA   
Architecture.com

# RIBA EAST MIDLANDS AWARDS 2024

## Project Architect of the Year 2024 Wayne Head

Project Name Alfreton Park Community Special School  
Practice Name Curl la Tourelle Head Architecture  
Client Derbyshire County Council  
Contractor Henry Brothers  
Principal Designer PFB Construction  
Structural Engineer Price & Myers LLP  
Services Engineer Method Consulting  
Landscape Architect Faithful & Gould

Muyiwa Oki PRIBA  
RIBA President

RIBA   
Architecture.com

# RIBA EAST MIDLANDS AWARDS 2024

## Building of the Year 2024 Alfreton Park Community Special School

Practice Name Curl la Tourelle Head Architecture  
Client Derbyshire County Council  
Contractor Henry Brothers  
Principal Designer PFB Construction  
Structural Engineer Price & Myers LLP  
Services Engineer Method Consulting  
Landscape Architect Faithful & Gould

Muyiwa Oki PRIBA  
RIBA President

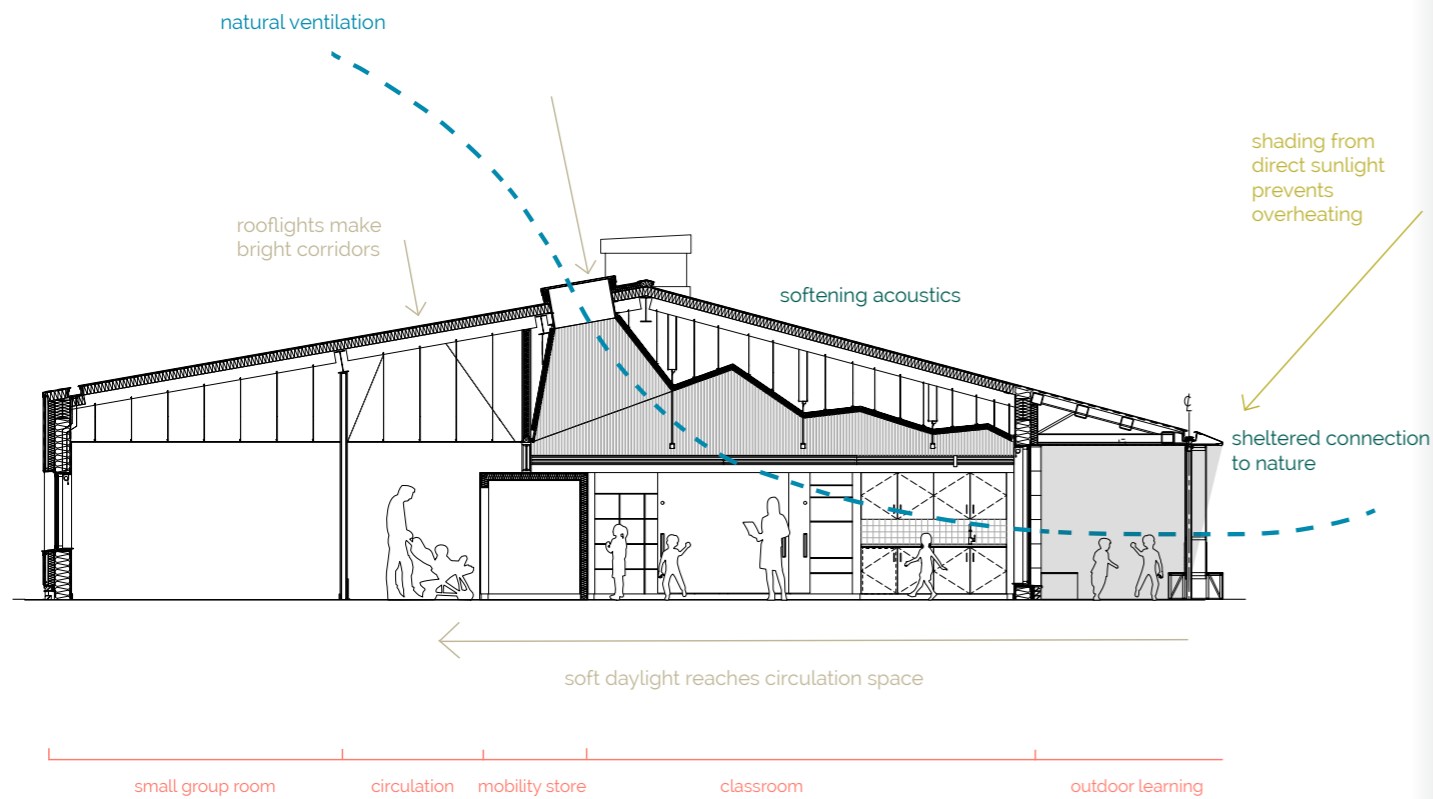
Sponsored by  
 **EH Smith**  
Architectural Solutions

RIBA   
Architecture.com

**'...this school  
changed my  
life,'**

Ryan Jones,  
student at Alfreton Park





**‘We have had a reduction in behaviour incidents, we see an improvement in communication from the pupils and generally ... pupils are happier,’**

Josie O'Donnell, Headteacher Alfreton



Secure, welcoming and inclusive learning environments

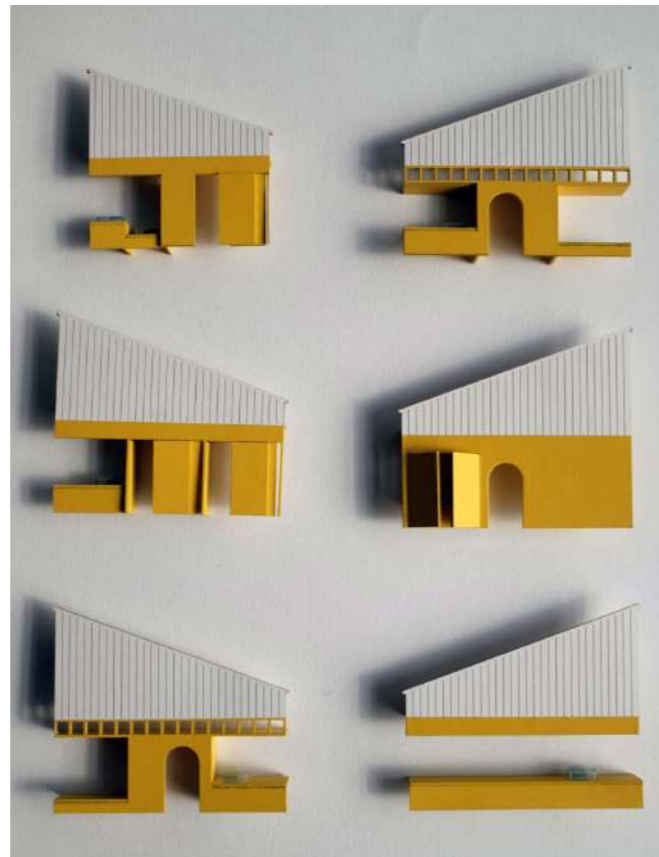
Light filled classrooms

Visibility and surveillance between classrooms and circulation

Sociable circulation

**All through SEND School**

↖ A simple and efficient single storey roof section is used throughout, a generator for elegance in its setting, creating open and light internal spaces for activities



↑ Engagement with the students where the model and photos were used to ask pupils what they liked about the proposal, and other school schemes.

↓ The school forms a campus like family of nurturing buildings within a park setting.

↑ Cardboard models of the potential interior elevation treatments for the classroom at Alfreton Park. The pupils were encouraged to position these new elements into the larger model as shown in the picture below.



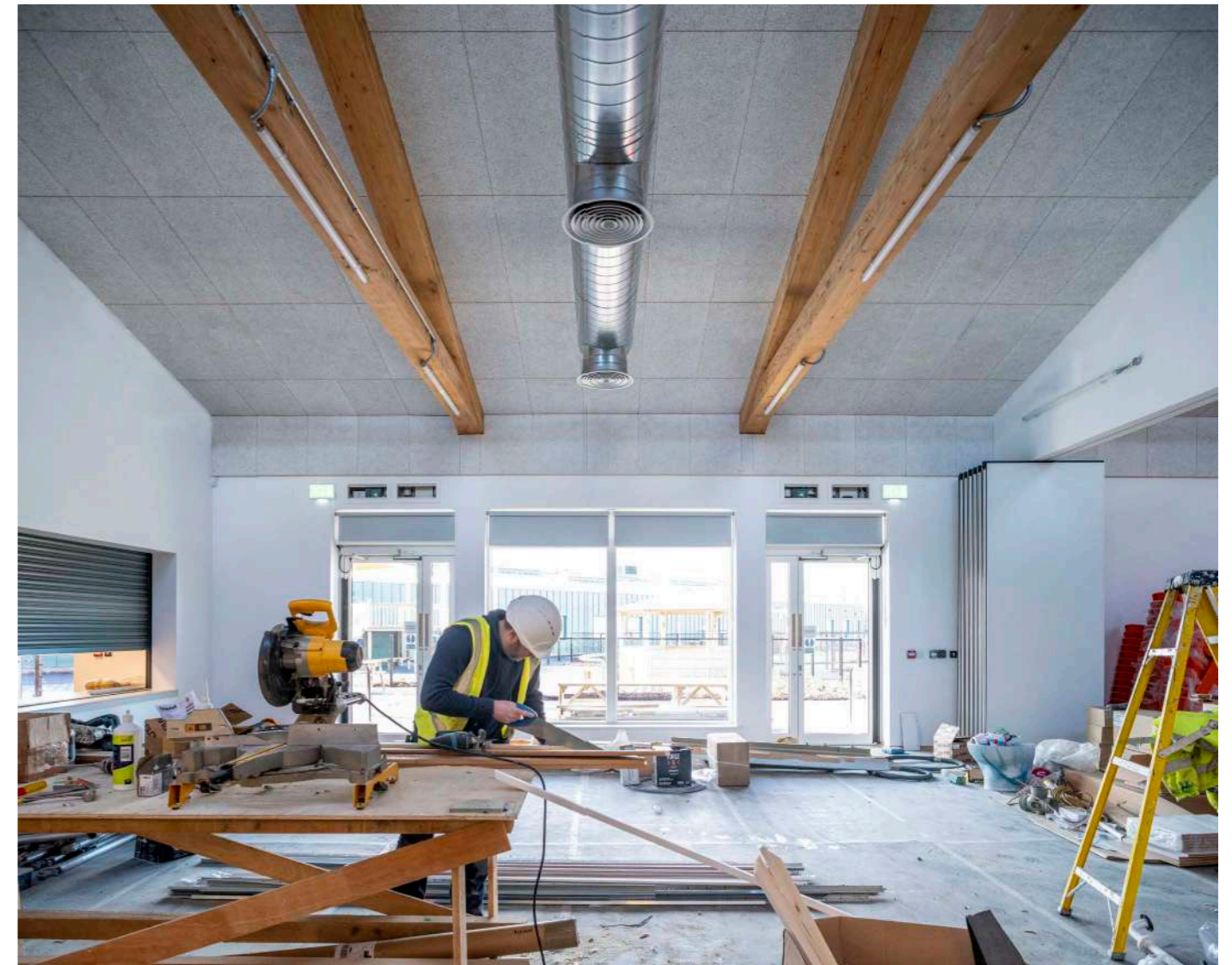






**‘We have had a reduction in behaviour incidents, we see an improvement in communication from the pupils and generally ... pupils are happier,’**

Josie O'Donnell, Headteacher Alfreton



RIBA Architecture.com | NATIONAL AWARD 2024 WINNER

RIBA Architecture.com | CLIENT OF THE YEAR 2024 SHORTLISTED

RIBA Architecture.com | EAST MIDLANDS AWARD 2024 WINNER

RIBA Architecture.com | EAST MIDLANDS PROJECT ARCHITECT OF THE YEAR 2024 WINNER

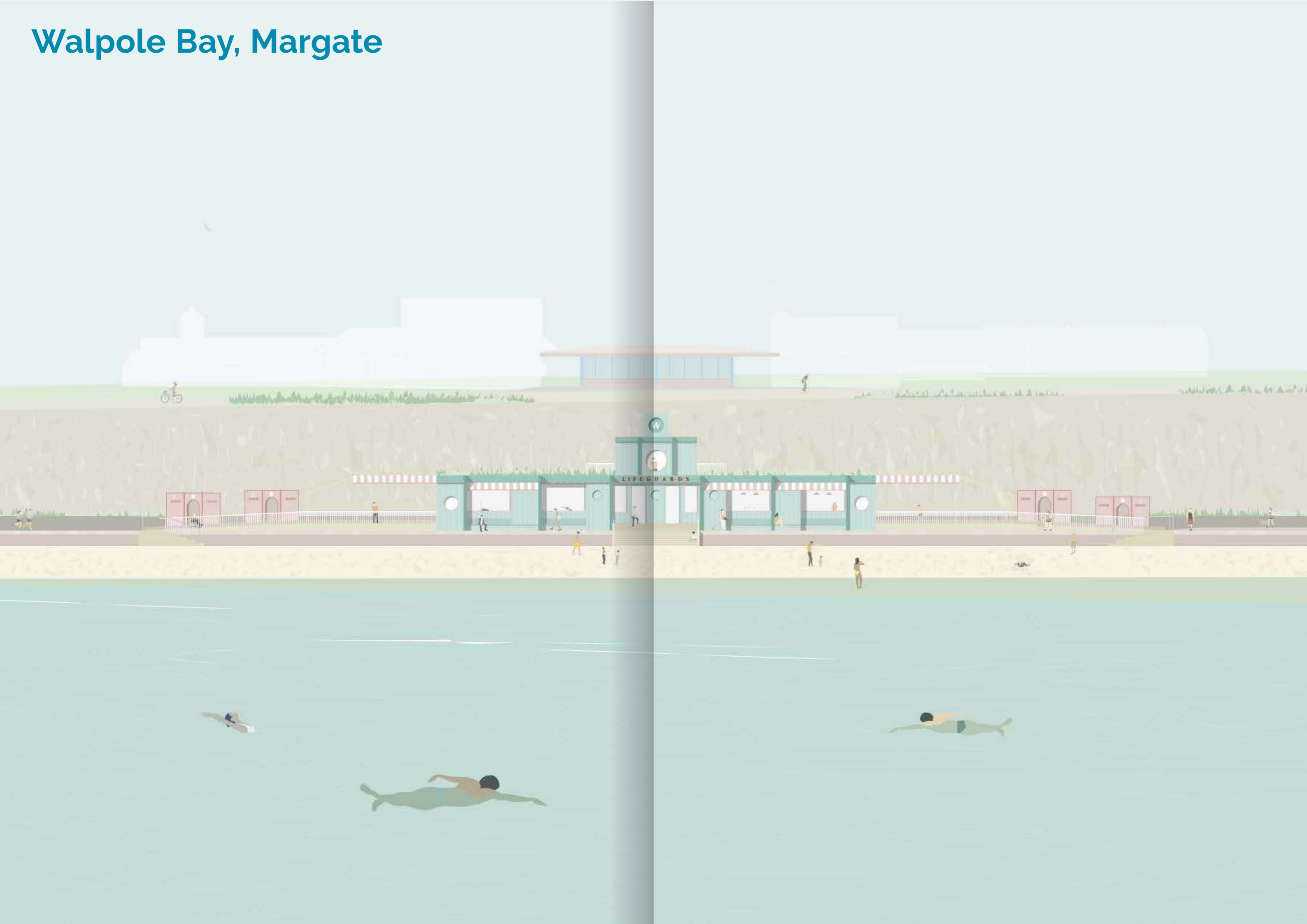
RIBA Architecture.com | EAST MIDLANDS BUILDING OF THE YEAR 2024 WINNER

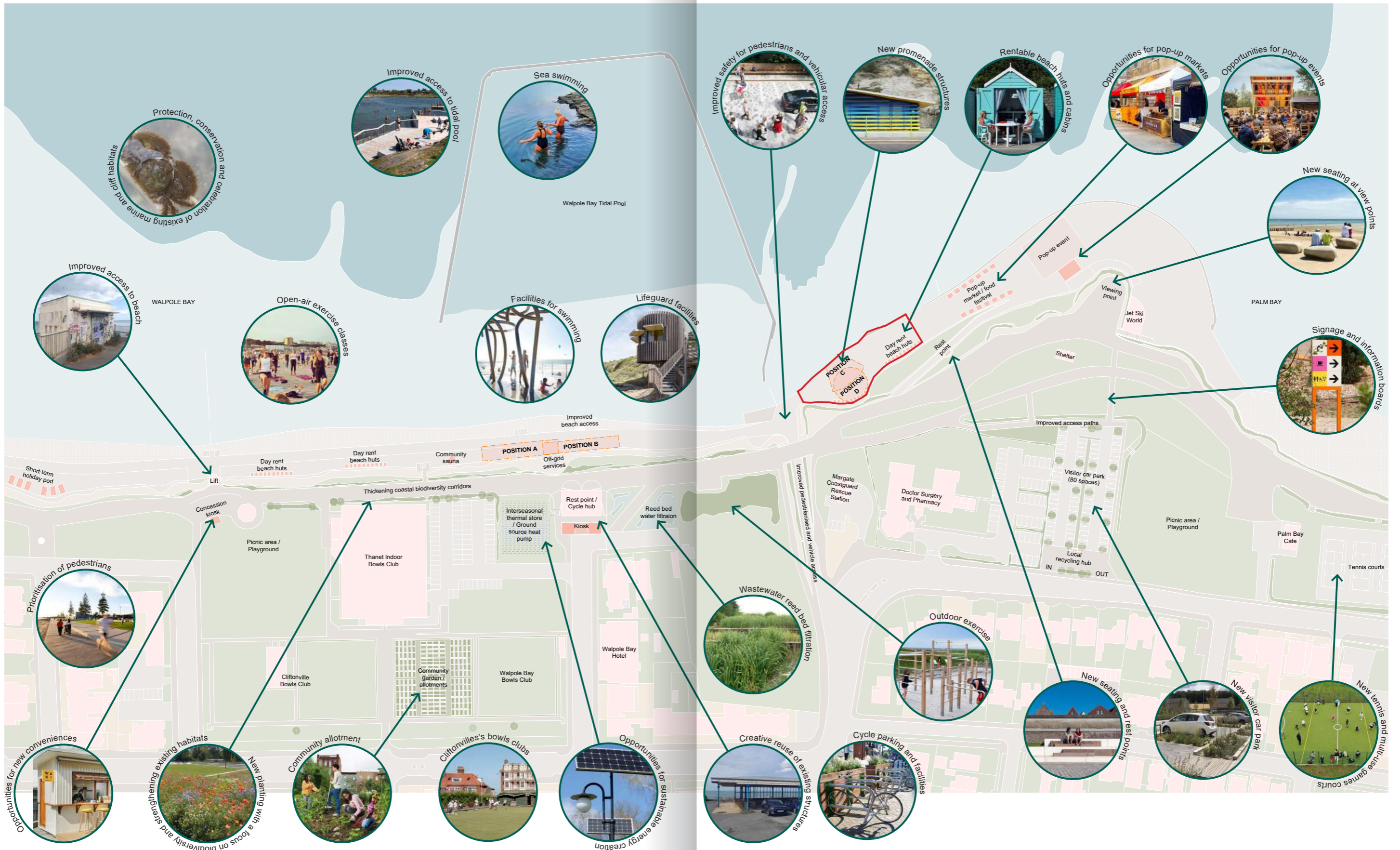
RIBA Architecture.com | EAST MIDLANDS CLIENT OF THE YEAR 2024 WINNER



All through SEND School

# Walpole Bay, Margate



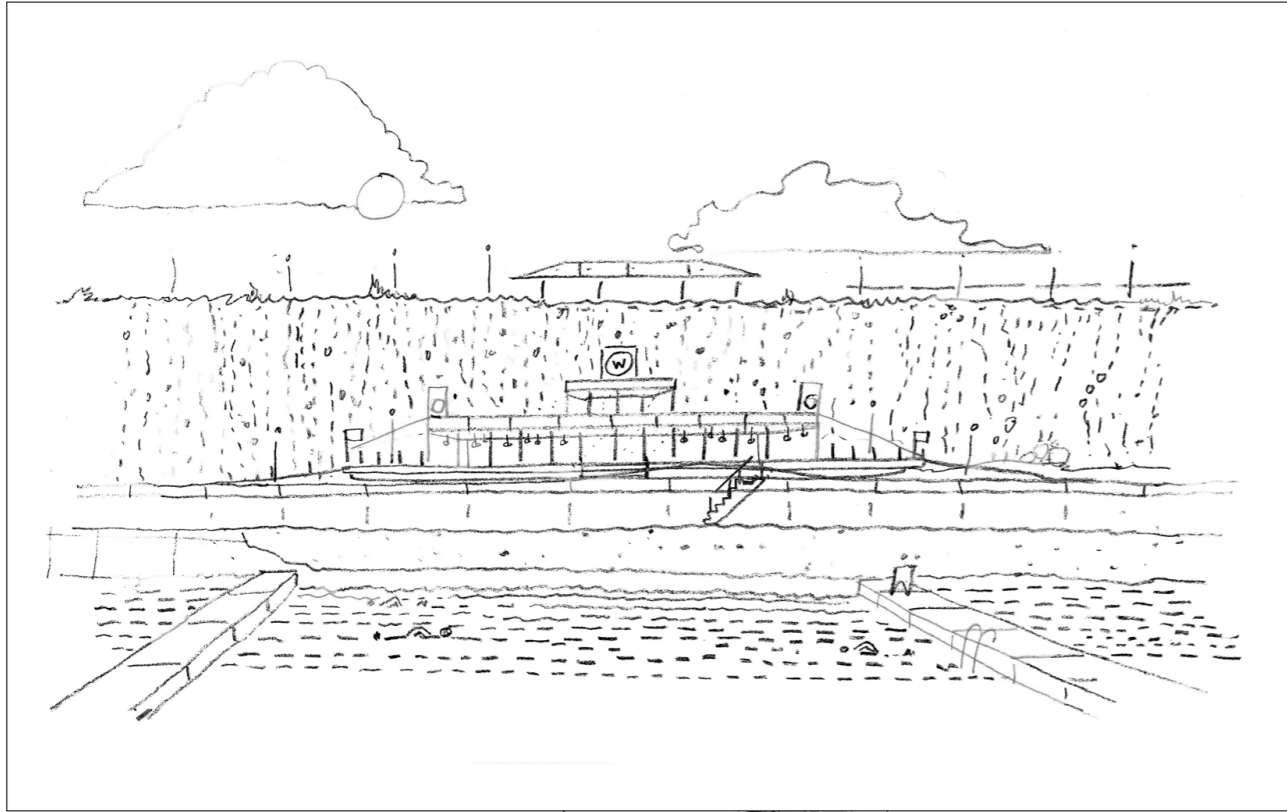


↑  
Part of the materials presented during the two week public engagement, which took place in October 2023.

Upgrading historic promenade buildings and public realm  
Protecting the local ecology  
Improving health and wellbeing along the coast of Margate

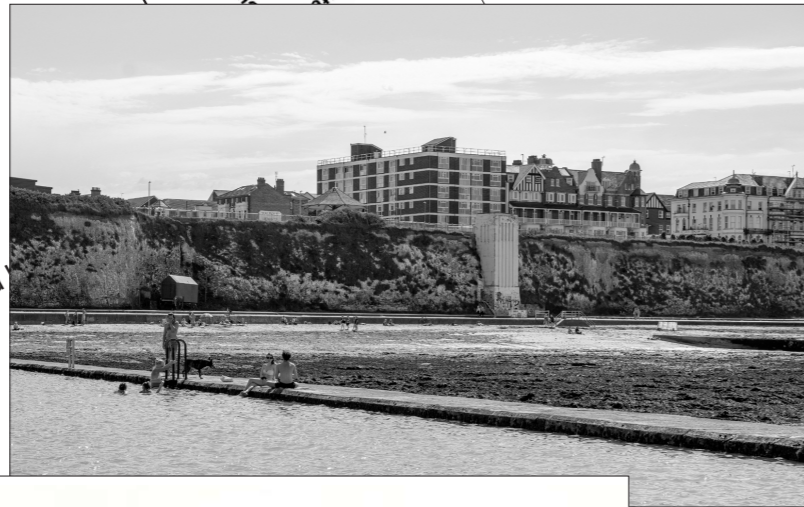
## Public Wellness and Tidal Pool





Q. What uses would you like to see within the Wellbeing Space?

Q. Which of the proposed like and why?

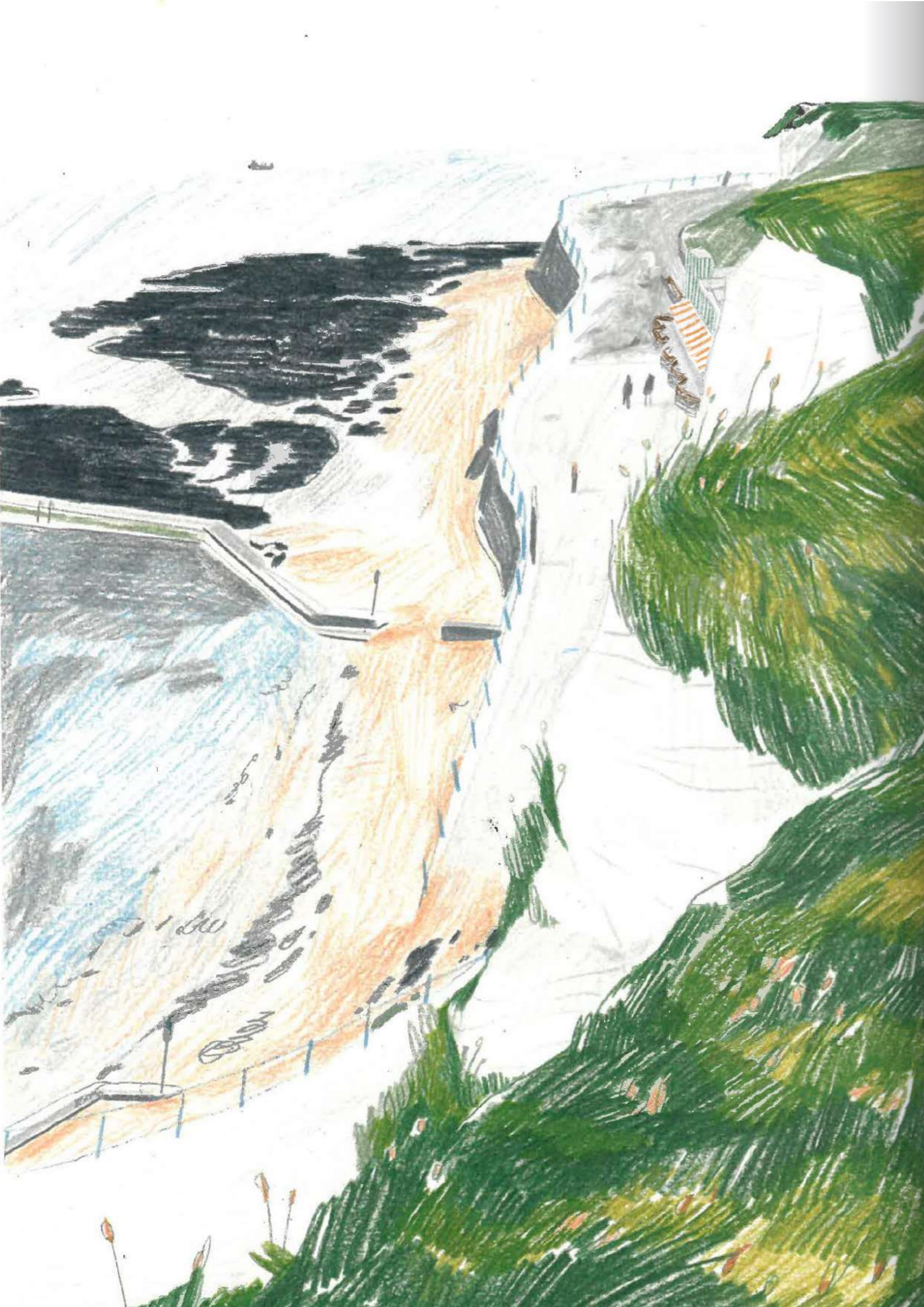


↑  
As a tool for further public engagement, CLTH encouraged the visitors to think about the future of Walpole Bay, write down their thoughts and aspirations and send them back to our office.

➔  
View of community spaces in the Margate promenade building



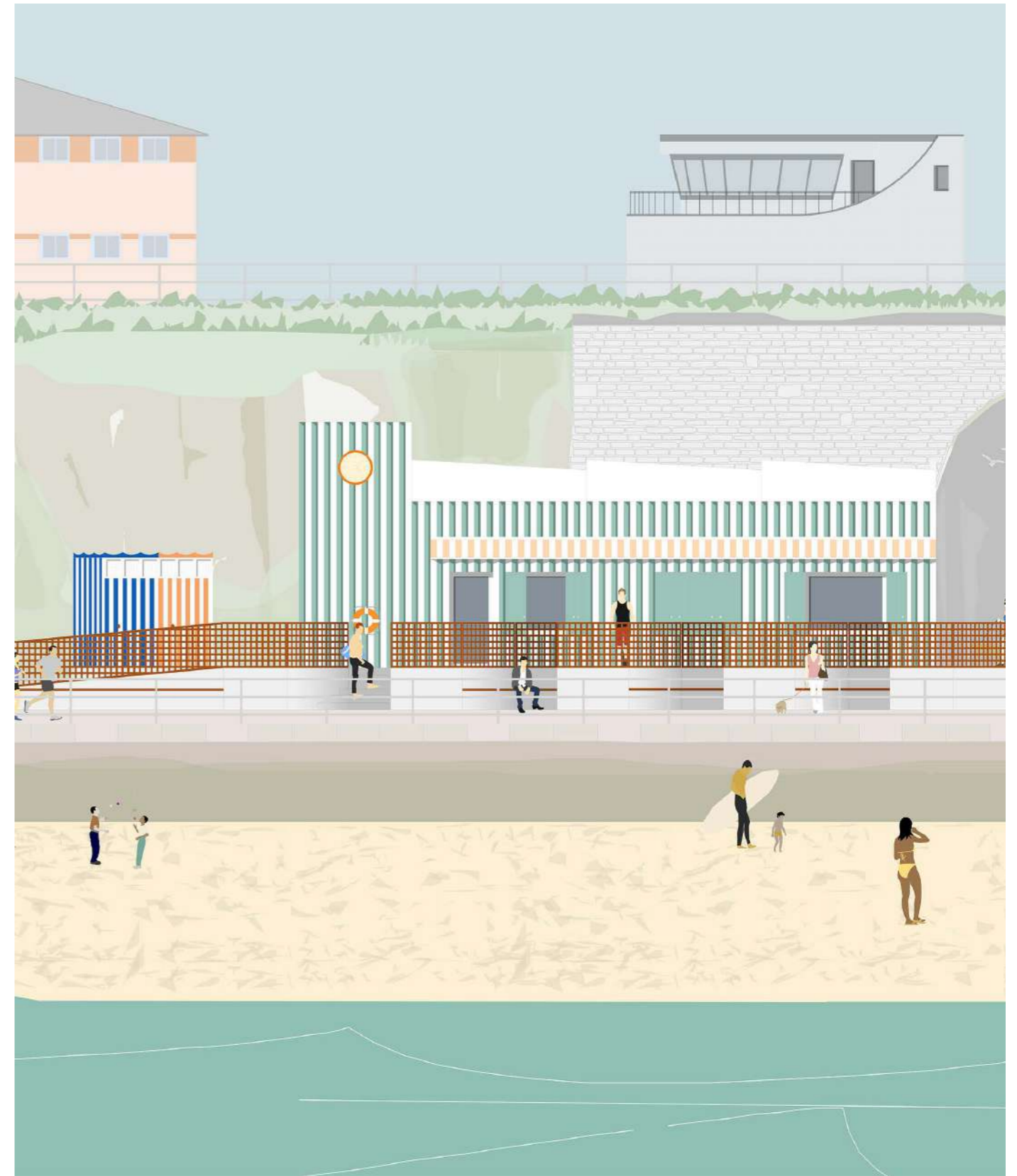
## Public Wellness and Tidal Pool



Looking from the Upper Promenade overlooking Walpole Bay Tidal pool



Initial sketches of promenade building



## Public Wellness and Tidal Pool

# Your Bruce Grove



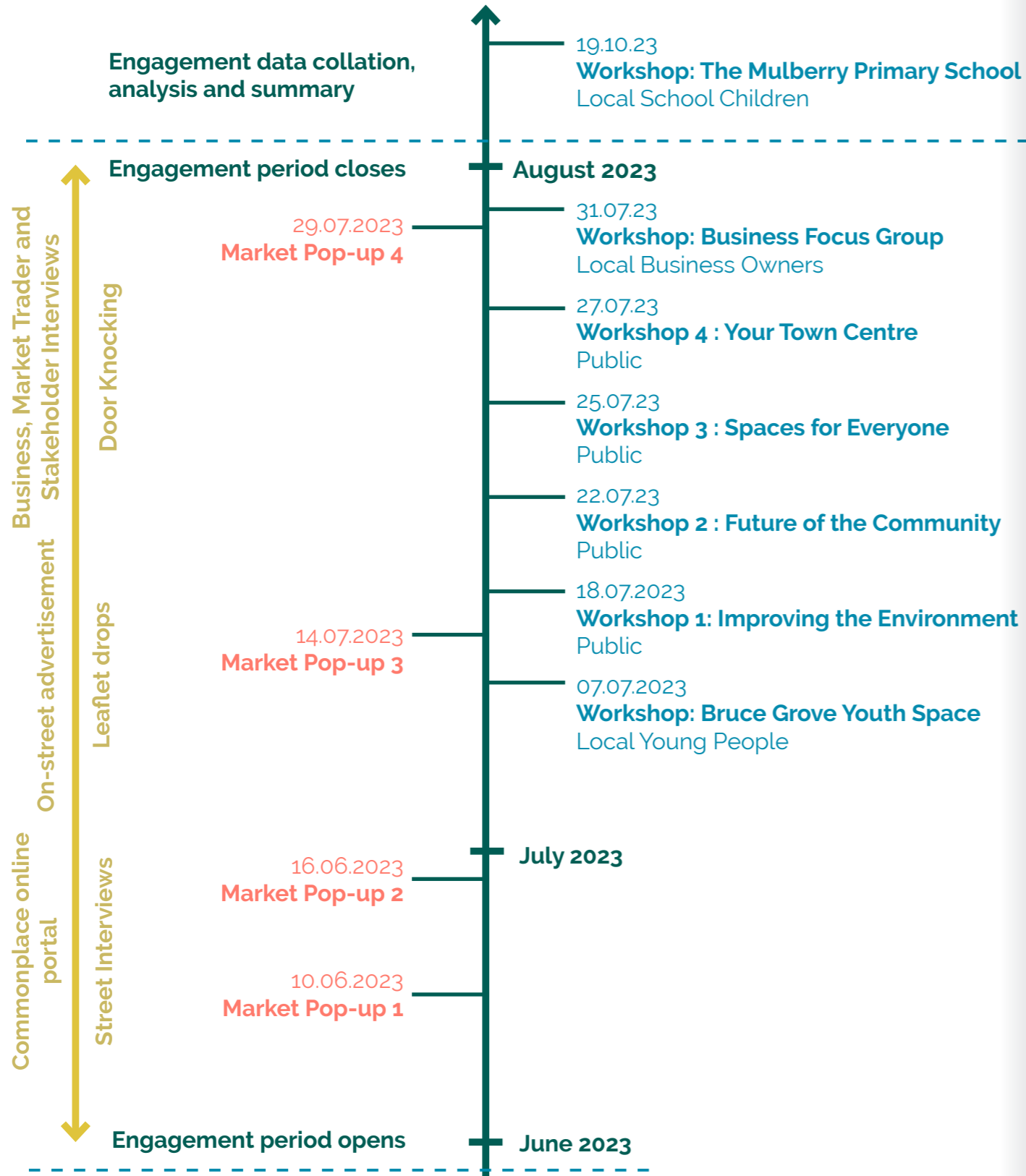


1000+  
in-person  
engagements

500+  
online  
contributions

7  
themed  
workshops

4  
market  
pop-ups



Our Public Life Diaries which we have developed as a pocket-size booklet to scribble, sketch and jot down thoughts and observations in throughout the day. This tool enable the design team to record, analyse and live Bruce Grove.

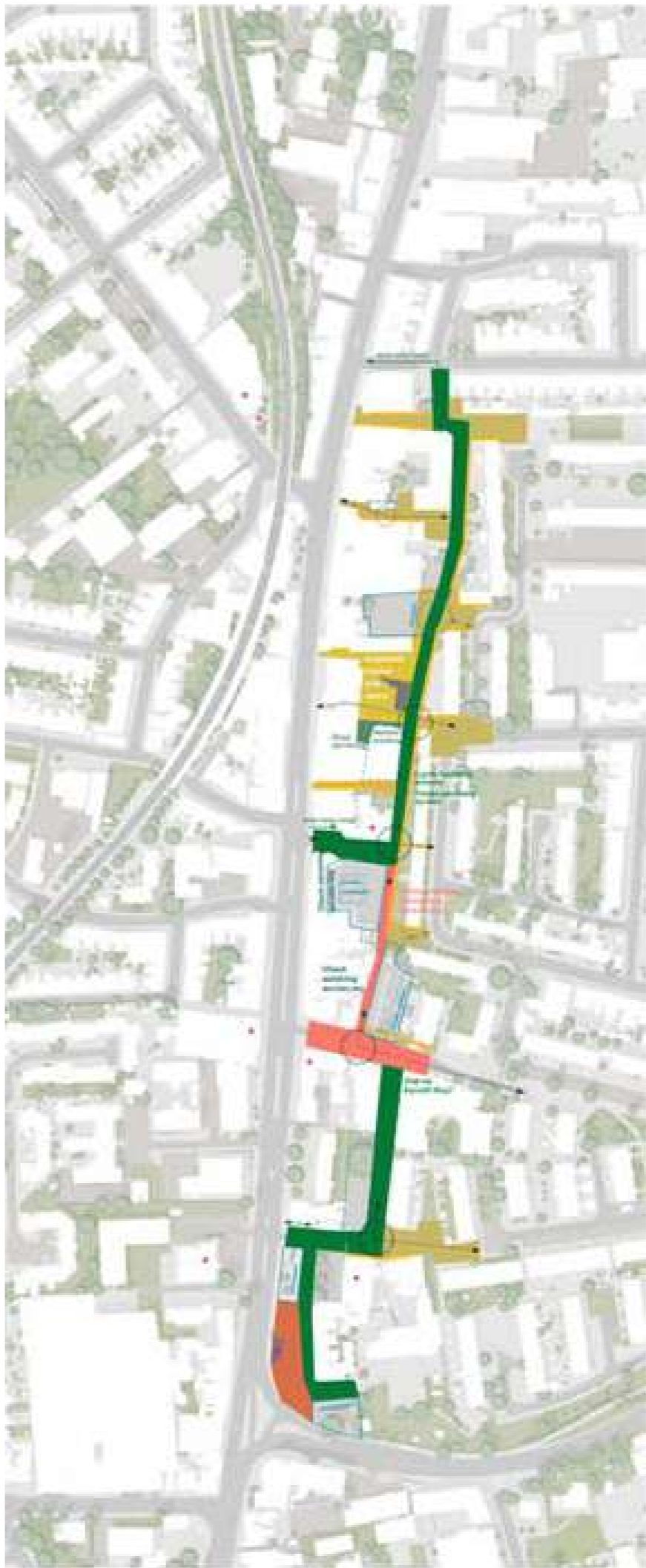
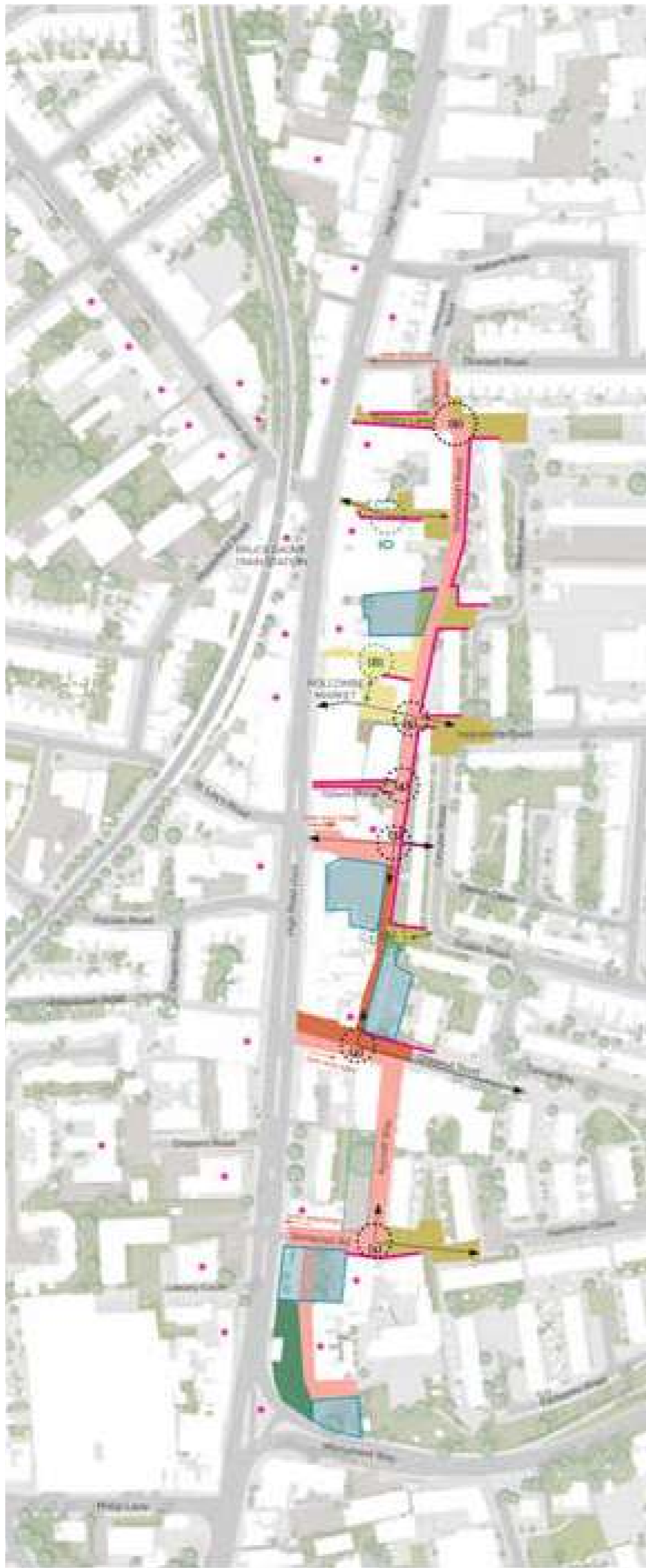


'Thickening' Tottenham High Road

In-depth urban analysis and holding community engagement workshops

Carefully planned activities held using a variety of tools and techniques

**Stronger together**



← Opportunities and constraints analysis



→ Surface types study and critical analysis




## YOUR BRUCE GROVE

A diverse and vibrant neighbourhood which is known throughout Tottenham and beyond for its variety of shops and businesses, historic architecture and creative communities.


Residents, businesses and visitors have shared that Bruce Grove's key strengths lie in its multi-cultural population and strong sense of community, heritage and culture.

Members of the community also raise some key challenges that need to be addressed: Litter, crime, and anti-social behaviour, heavy traffic, lack of greenery, lack of social space, especially for young people and many more.

In responses to these challenges, we plan to invest significant Council and Government grant funding to improve streets and spaces, and create new affordable homes and workspaces in the town centre for the benefit of Bruce Grove's residents, businesses and communities.



Haringey london | newman francis | Curt la Tourette Head Architecture




CLTH undertook in-depth urban analysis and held community engagement workshops to inform the development of site-wide strategies.

Together with Newman Francis and Haringey Council, CLTH put together a bespoke **9-week engagement programme**, which included a series of carefully planned activities using a variety of tools and techniques.

Starting in June 2023, **45 separate engagement events** were held, including street interviews, door knocking interviews, local business and stakeholder interviews, market pop-ups, and interactive themed workshops.

Some of the materials from one of the Pop Up Market events are shown below.





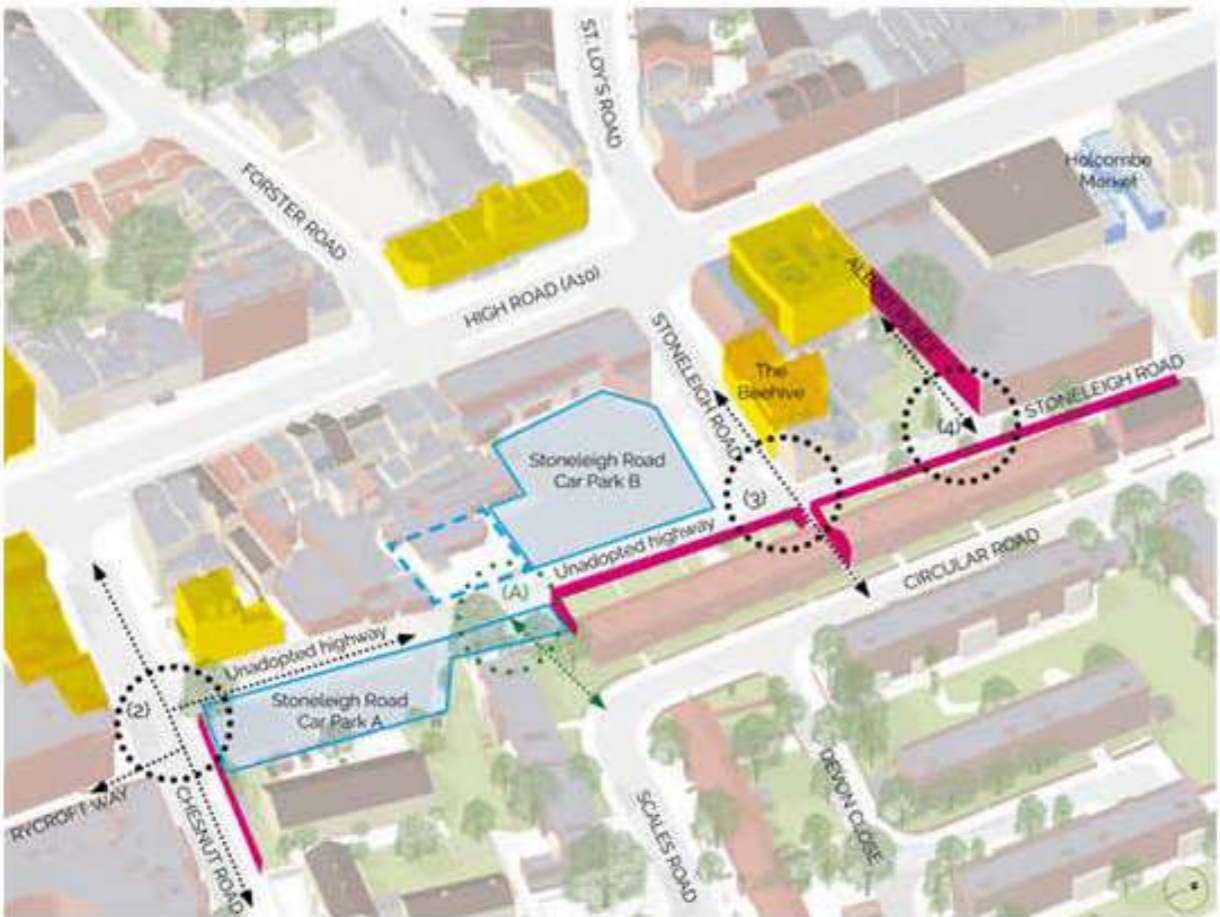
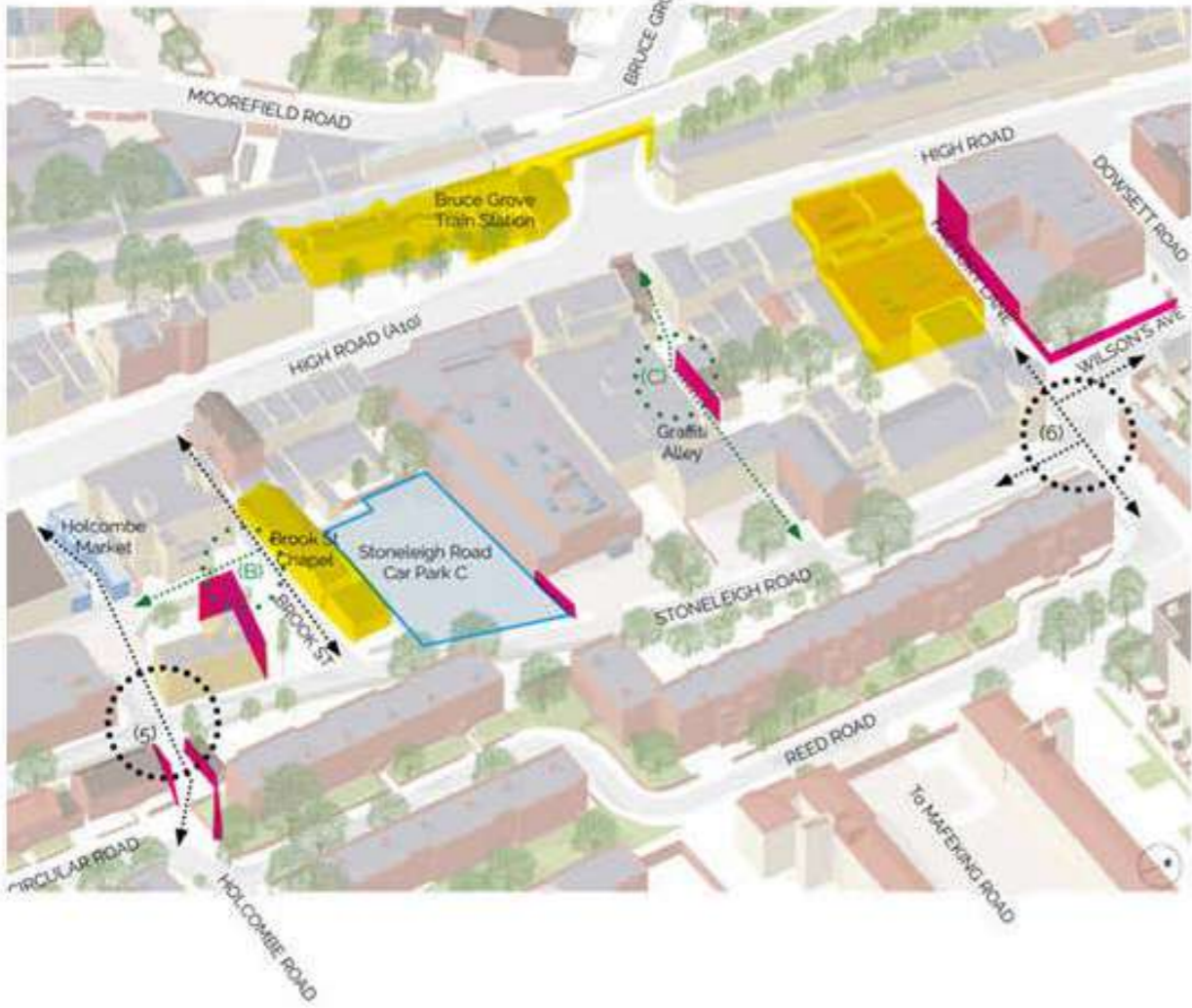

Haringey london | newman francis | Curt la Tourette Head Architecture






Haringey london | newman francis | Curt la Tourette Head Architecture



↑  
Photos from some of the engagement events during the Engagement Workshops sessions.

↓  
A young person drawing illustrating their vision for Bruce Grove.

←  
Setting as site-wide public realm strategy through identified 'pivot points' of North-South & East-West connections and opportunities for improvements.



Stronger together

# Revitalize Peckham Rye





↑  
The open-air youth engagement sessions in the Park

←  
The pavilion utilises natural light and ventilation where possible, with the tall spaces, skylights and large windows designed to take the best advantage of this.

Improving public facilities around the parkland area

Structural CLT and finishes

Light and airy spaces

Easy access and visibility

## Off grid learning







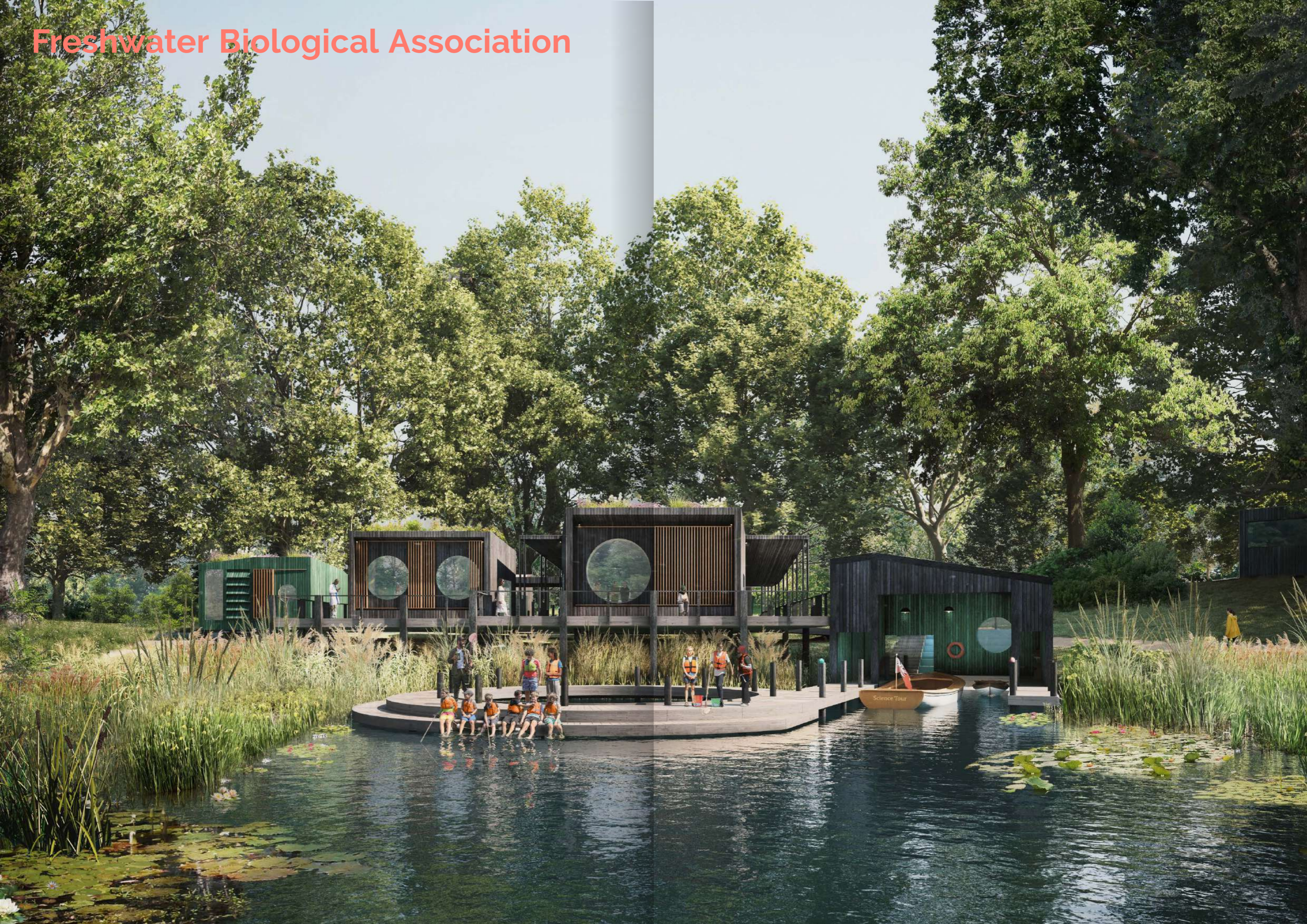
**“The new pavilion in Peckham Rye Park looks fantastic within the landscape. The shape and lines it makes are wonderful close up but when viewed from further away do not detract from the views of the park it sits in.”**

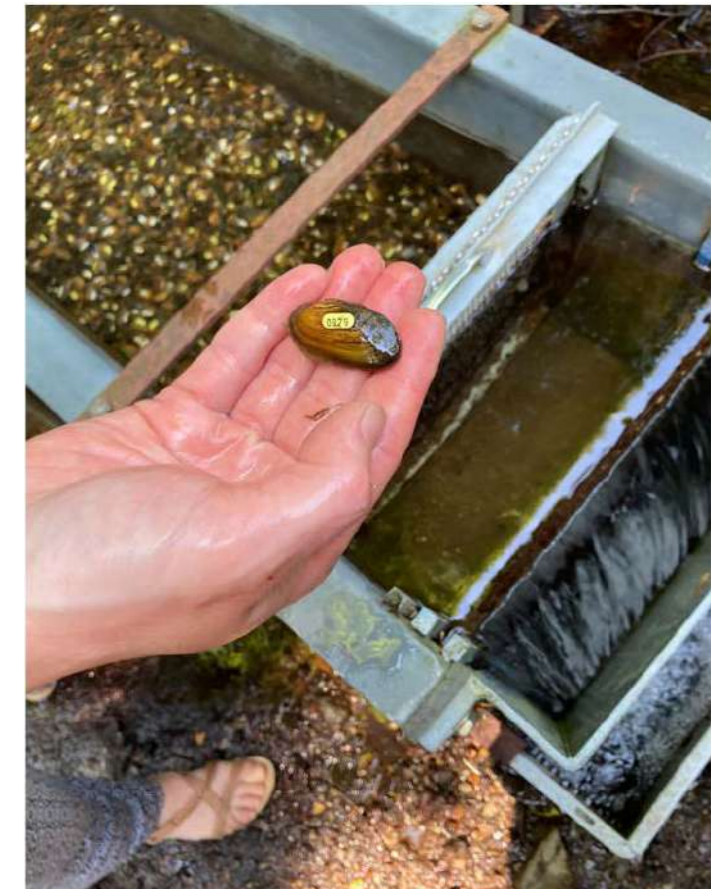
Will Walpole, Environment and Social Regeneration Manager, LB Southwark





# Freshwater Biological Association





**‘From the get-go, I have found CLTH to be really focused on understanding our organisational ambitions and then turning that into an inspiring architectural vision.’**

Simon Johnson  
Executive Director, Freshwater Biological Association

Habitat restoration and water quality improvements

Sensitive design in the Lake District National Park

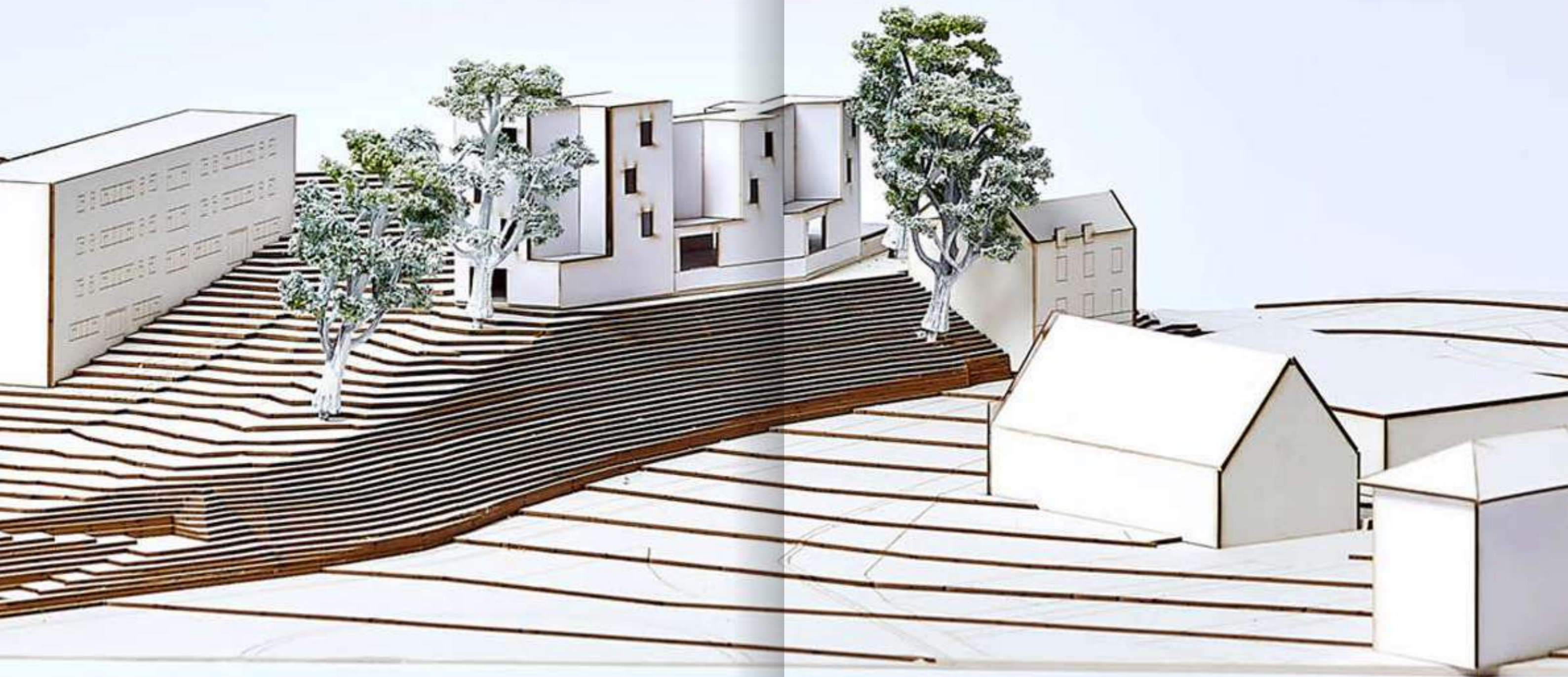
Sustainable sanitation and water management solutions

Protecting endangered freshwater species

**Ecological Sustainability**



# Military Road Housing for the Homeless

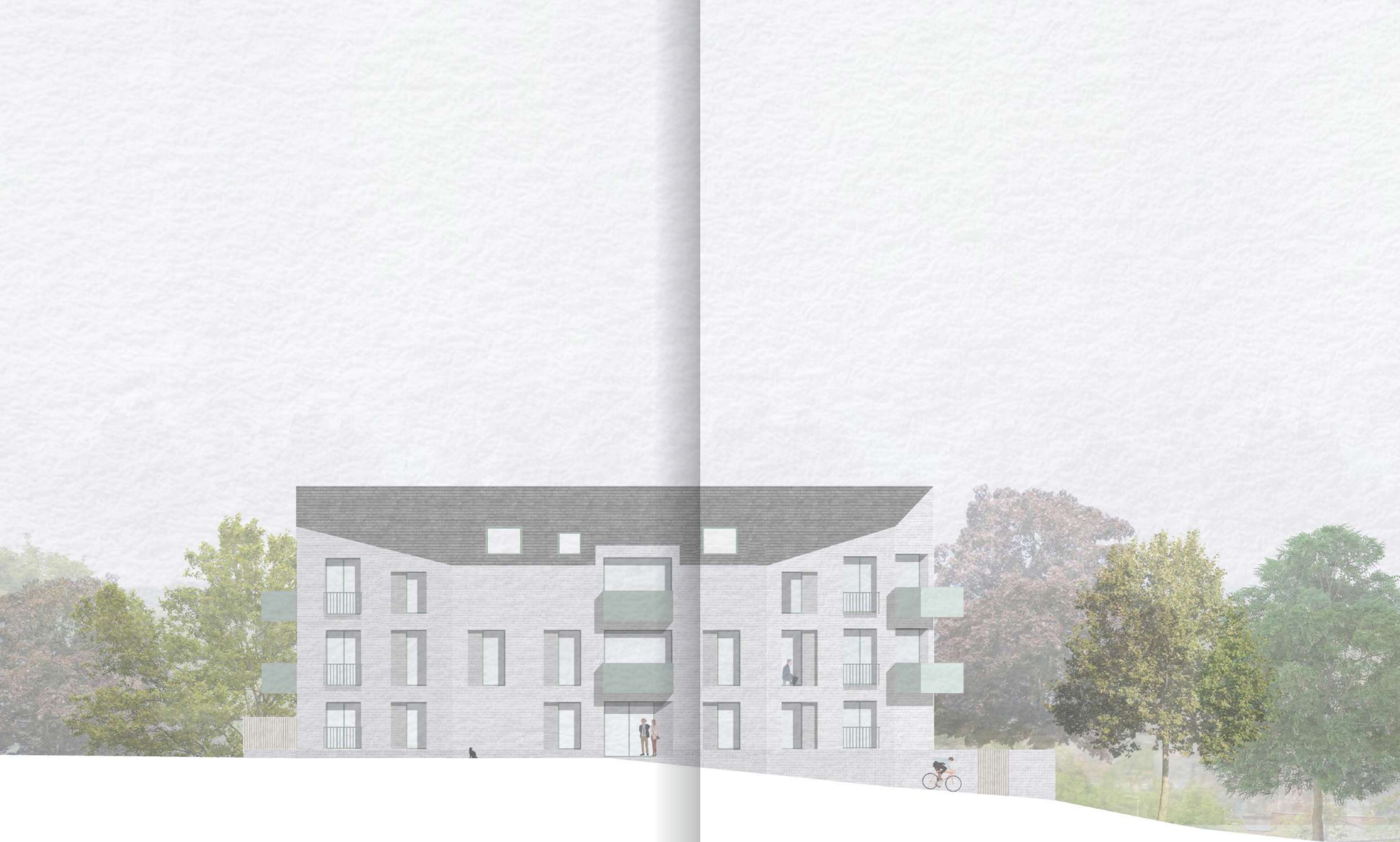




↑  
Model making at different scales  
as a tool for testing,  
communicating and designing  
spatial solutions.

→  
Historic etching of the site in 1837.



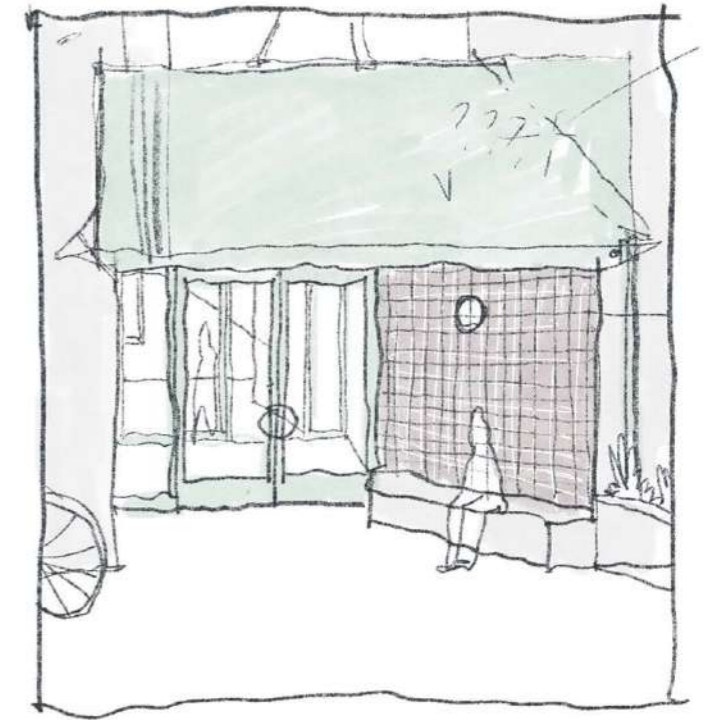


Angled façades add interest to the elevation and allows for extended three storey façades to this less sensitive side of the building.

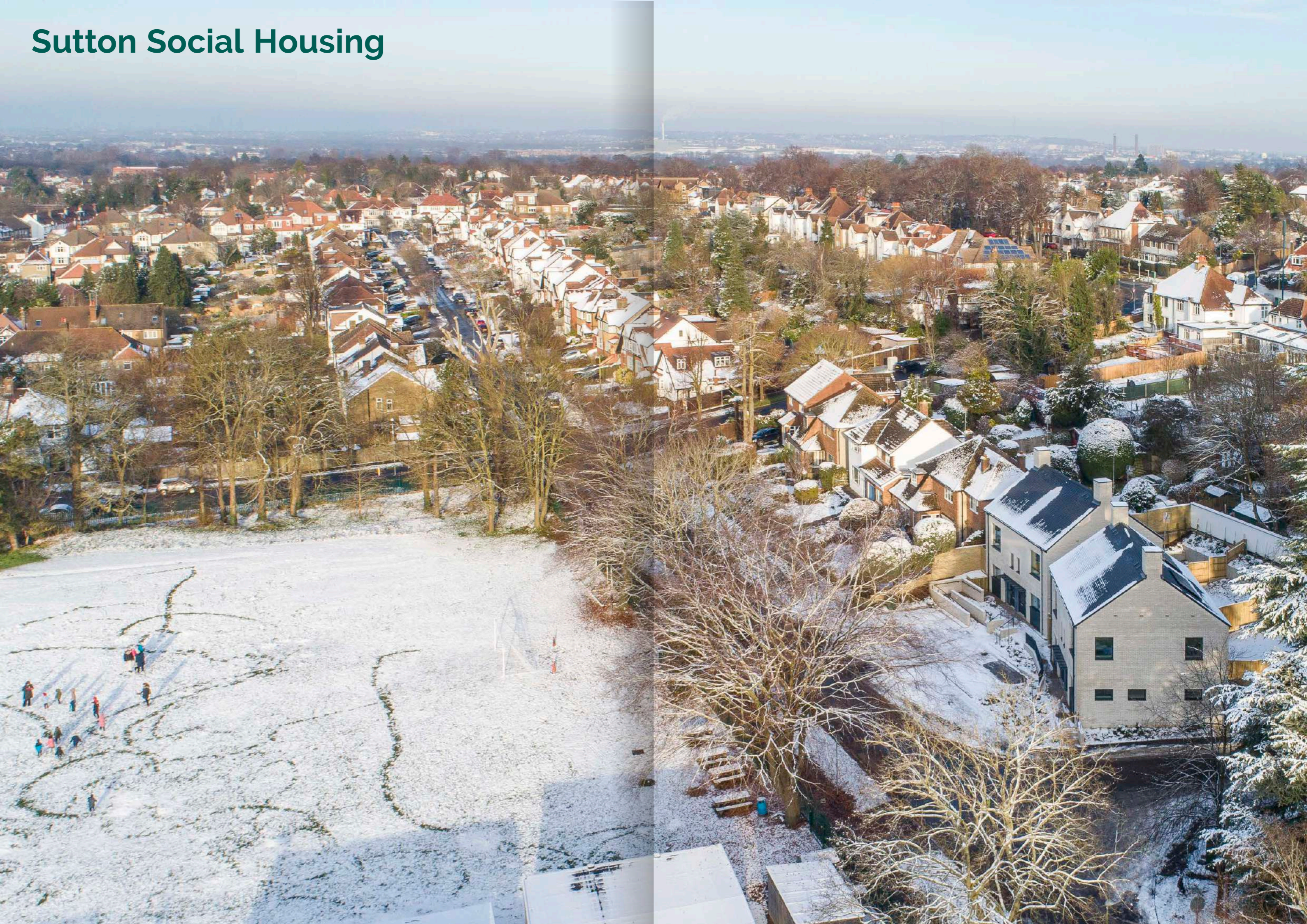


↑  
Through the balcony and up  
to Dover Castle.

→  
Interior view of interiors  
showing landscape beyond  
through window views.



# Sutton Social Housing







The first happy residents in their new home.

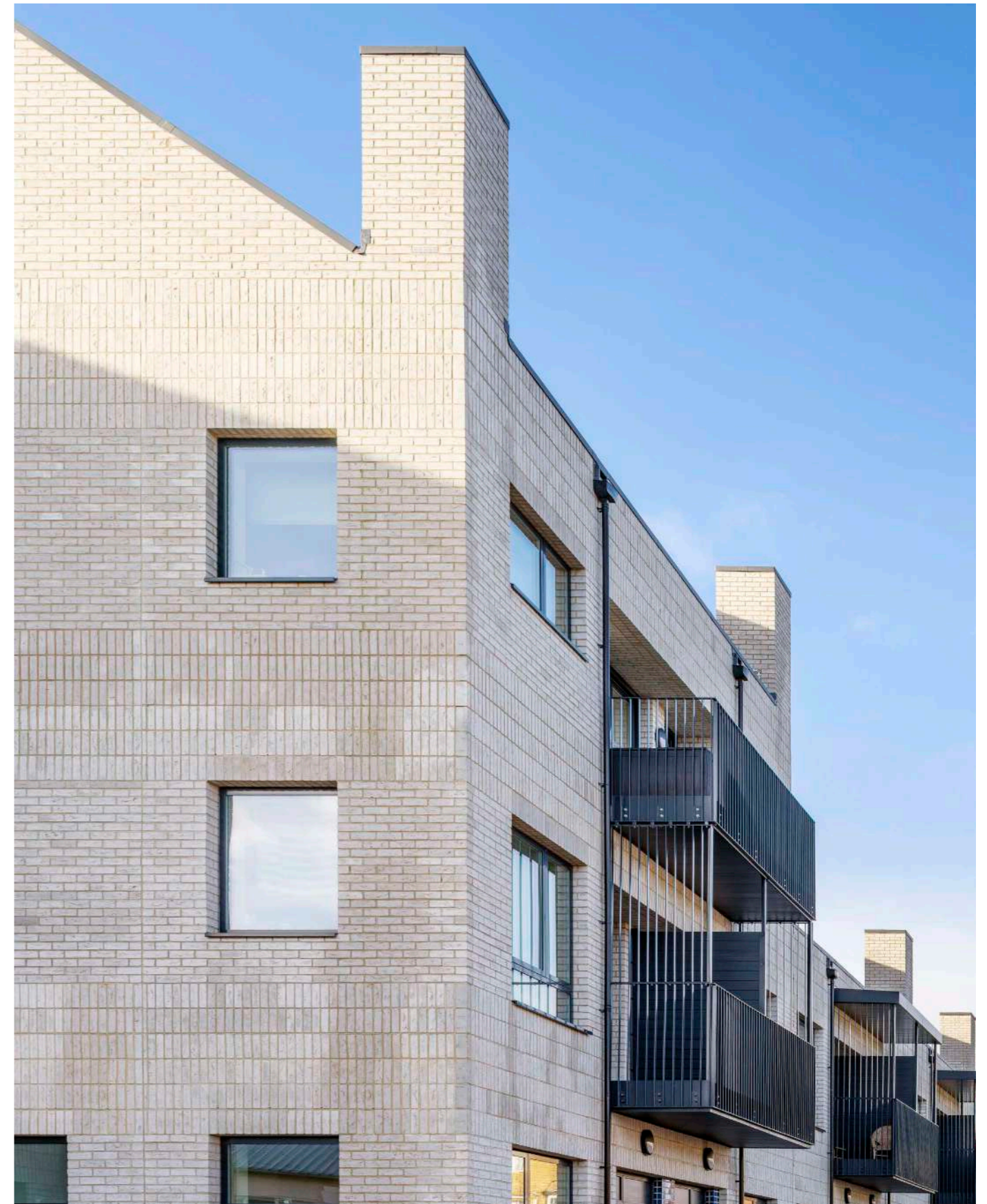


This environmental section shows our early intent to build with a cross-laminated timber (CLT) frame, giving a natural, almost Scandinavian, quality to the inside spaces. The distinctive chimneys respond to the suburban location and also assist with the passive ventilation of the homes.





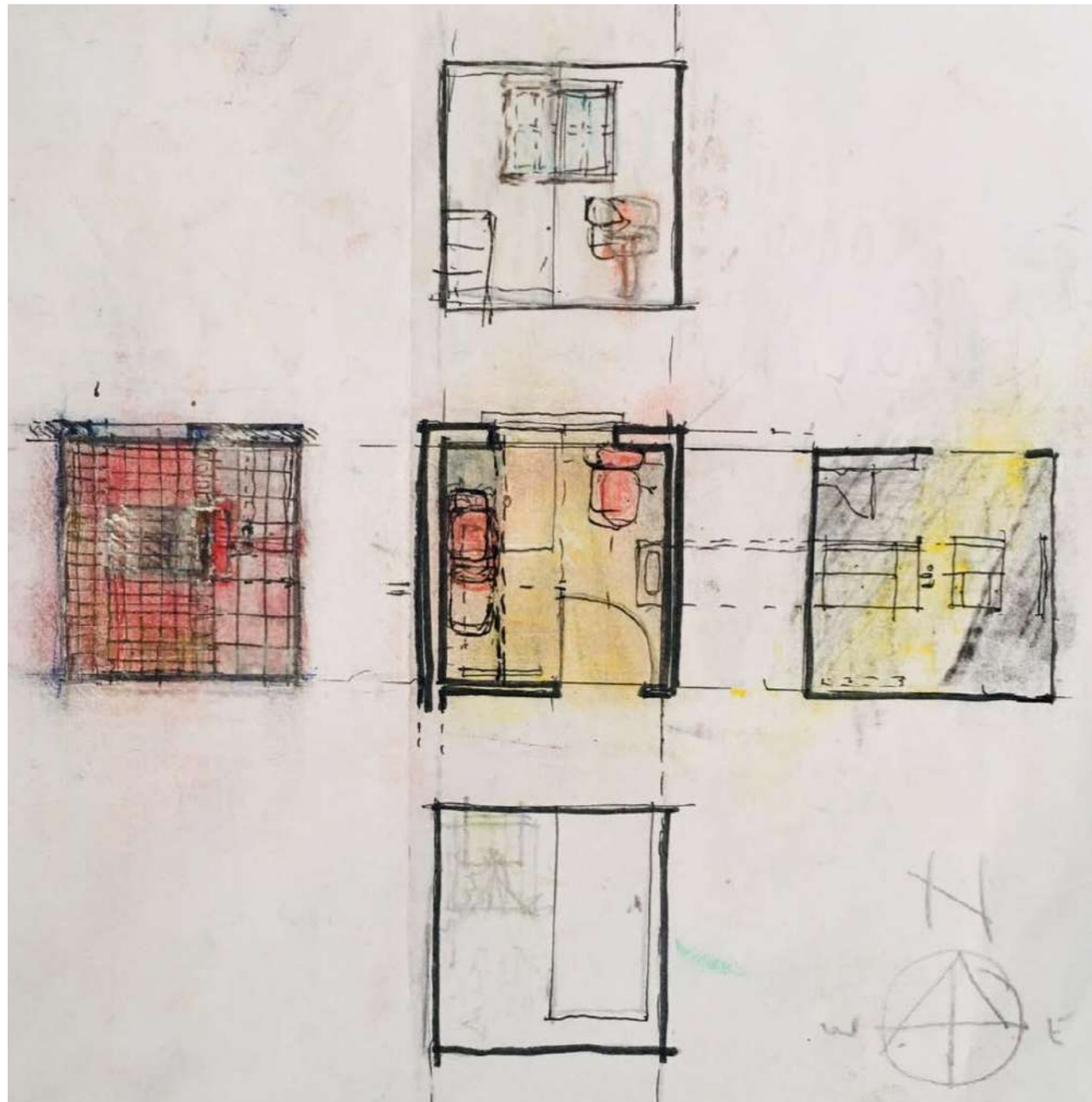
↑  
 Early sections exploring the contextual conditions of specific sites. Some were small and only offered the opportunity to construct a couple of new homes; others had space for larger-scale housing with multiple units.



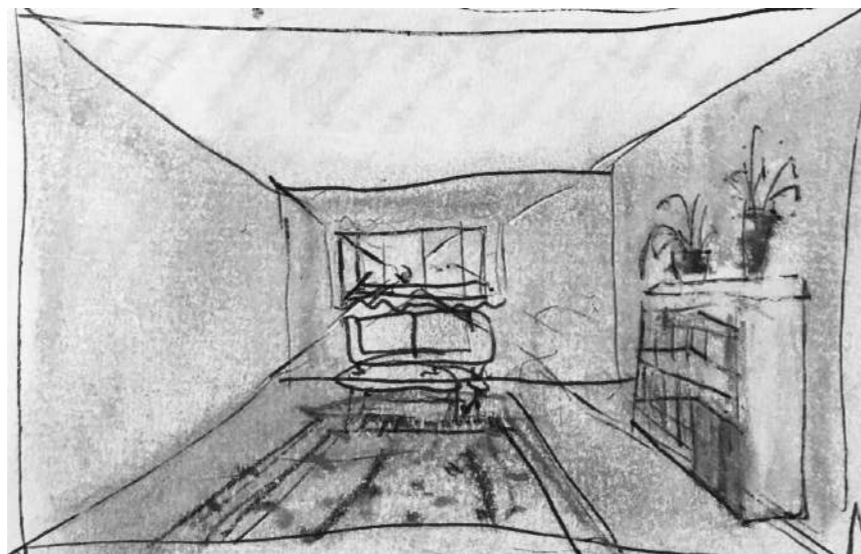
Front to Back



# Newham Virtual Schools



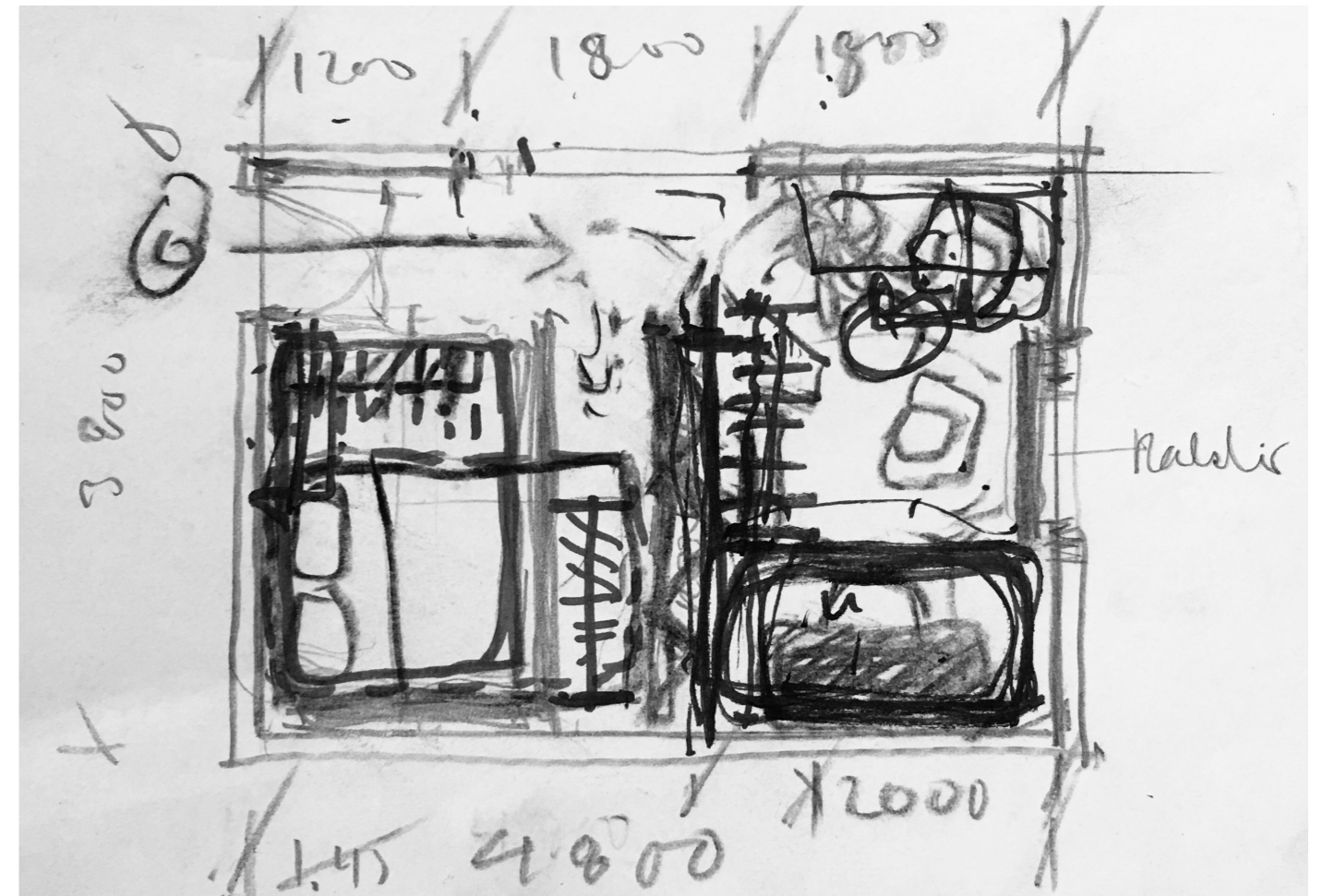
Room studies, light studies and measurements taking done by participants during virtual training.



We recently completed an eight weeks programme with the care leavers at Newham Virtual School in London Borough of Newham. Where we explored how participants could best inhabit their flats, most of them having moved in recently.

Starting out with a package of materials and drawing equipment - including high-quality tape measure and the iconic triangular scale ruler. Participants were taught how to measure a particular room in their flat and subsequently draw up scaled plans and elevations. They also studied the existing qualities of their rooms, including materials, colours, textures, and light in particular. This was then made into propositional drawings with focus on the individual participant's ideas and needs.

The weekly sessions provided an opportunity to re-iterate and refine design ideas while providing the participants not only with a design portfolio documenting their work, but also with a range of transferrable skills and life skills to assist their independence.

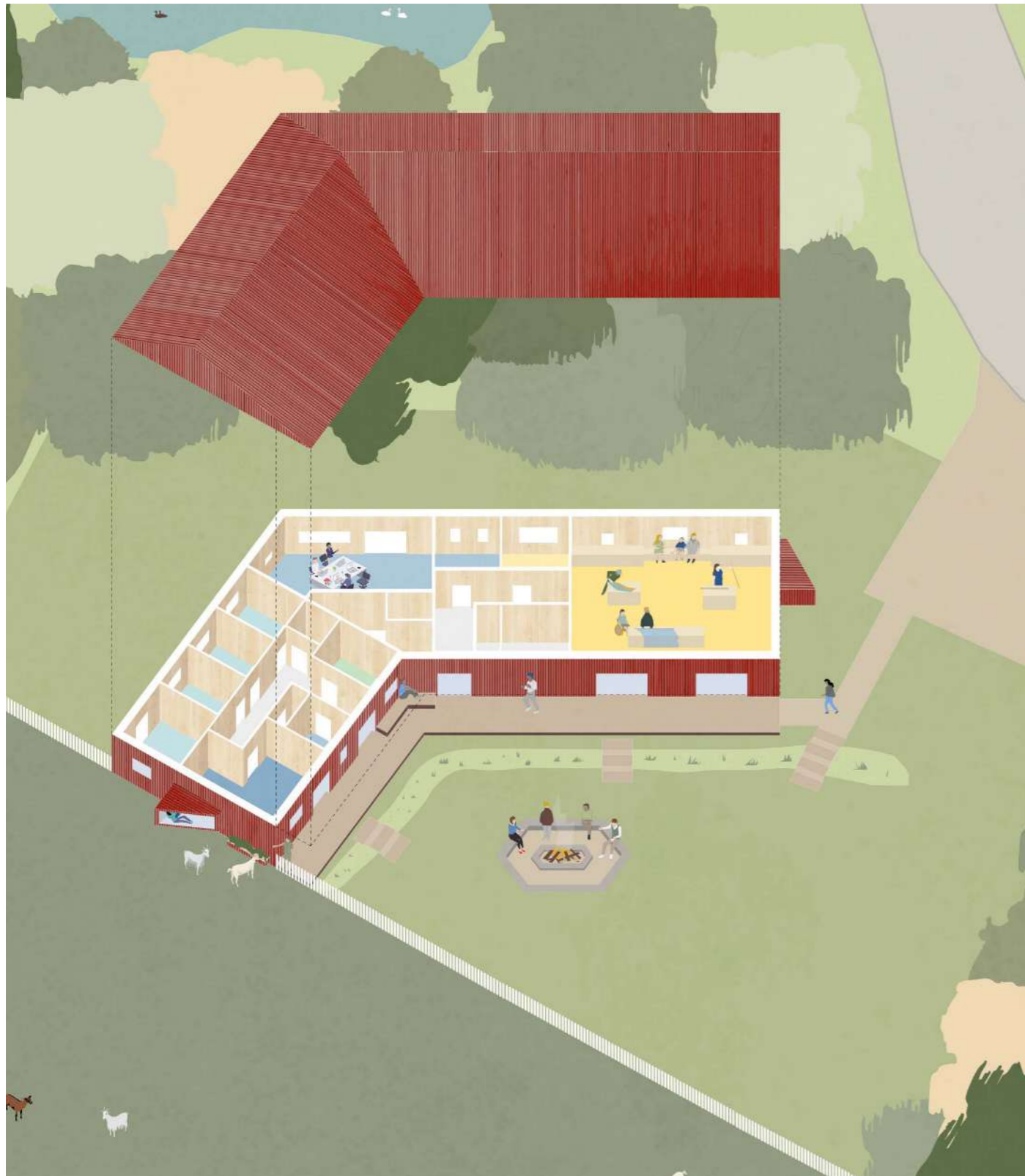


Re-thinking Spaces

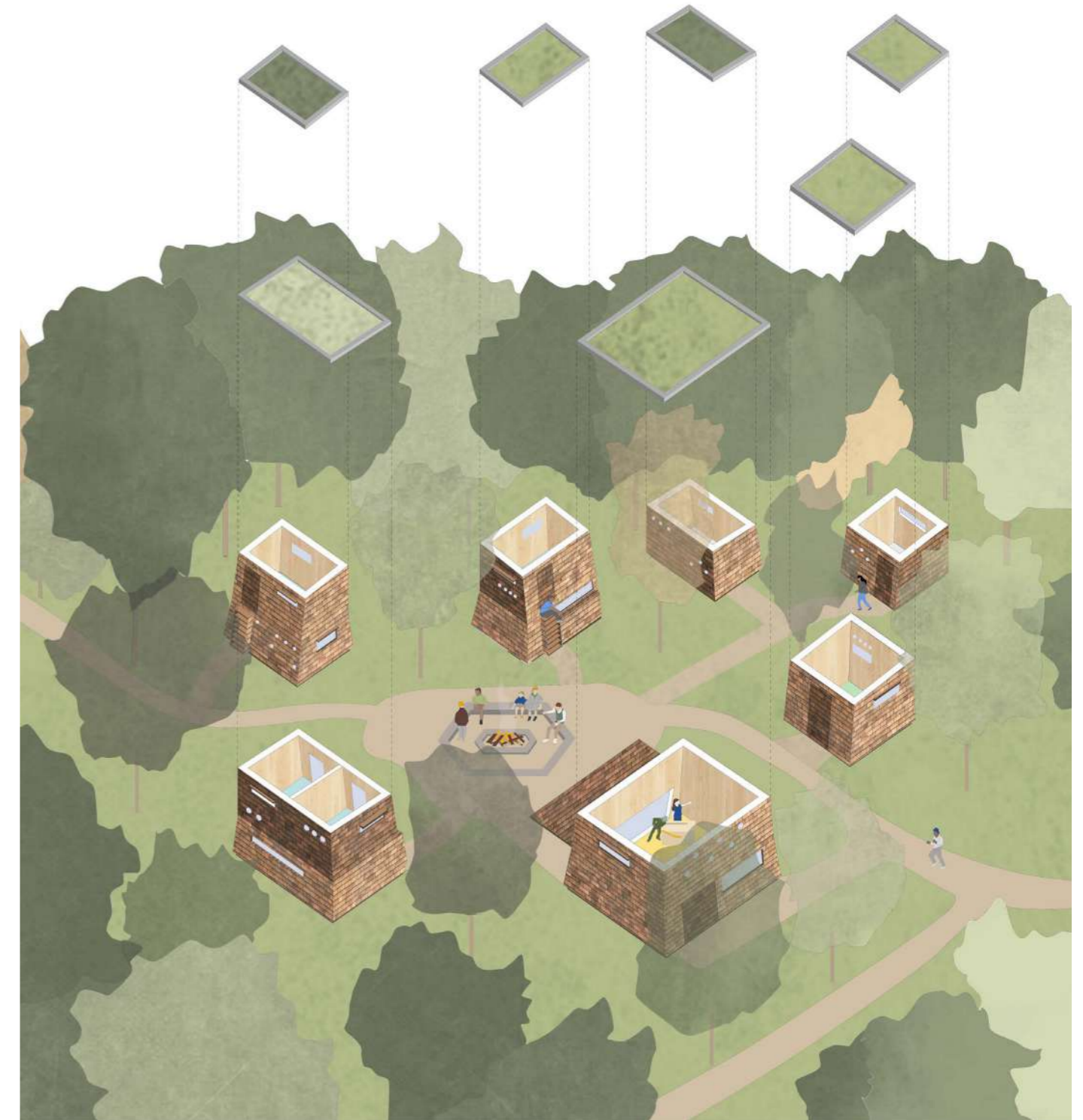


# Gordon Brown Centre





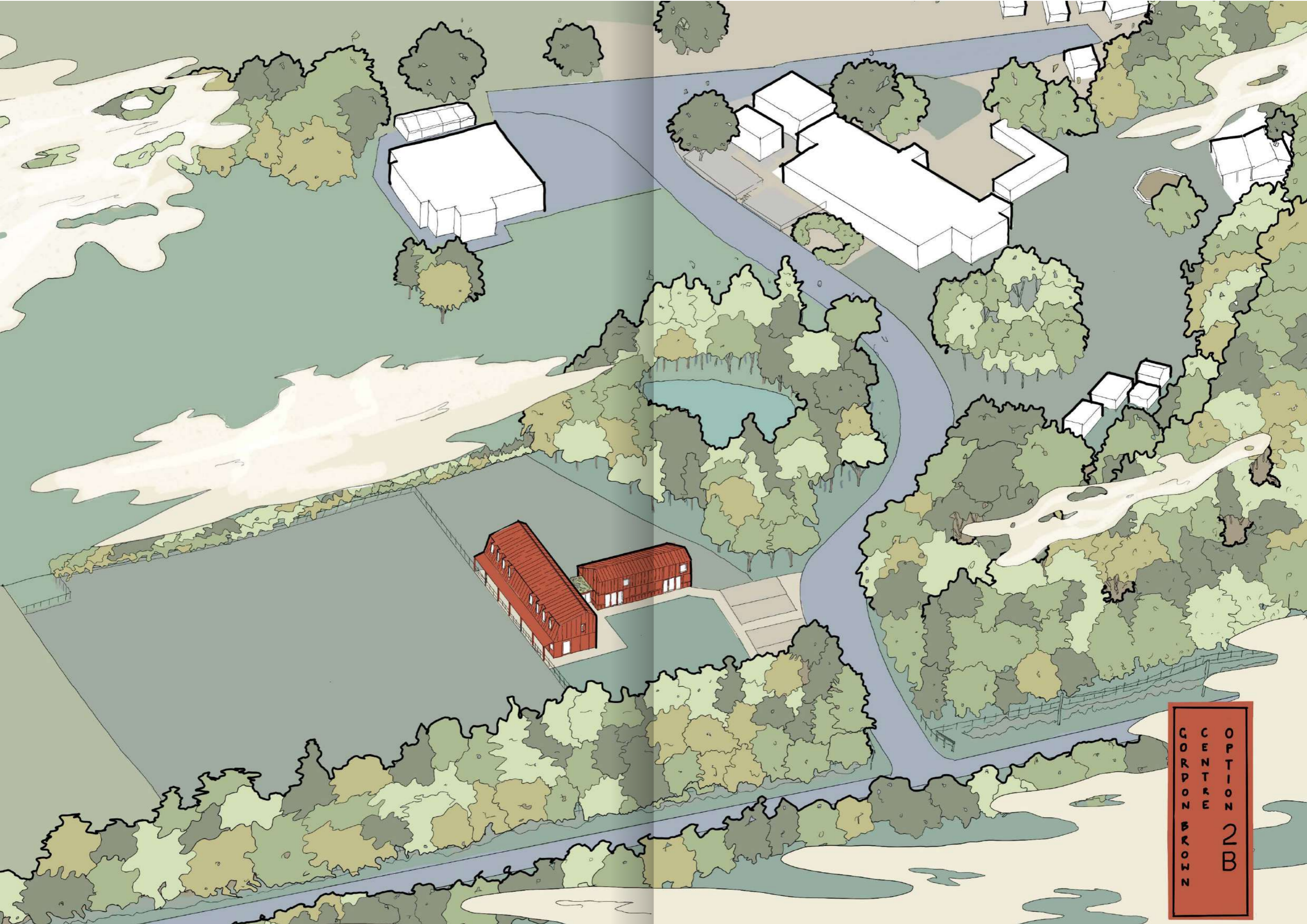
↑  
Design development study  
showing proposal at the edge  
of the farm area.



↑  
Various buildings housing  
different activities and function,  
spread out in the woodland  
area

- Creating flexible teaching environments
- Interweaving outdoor and indoor spaces
- Connecting with nature
- Outdoor learning

## Developing Lifelong Skills

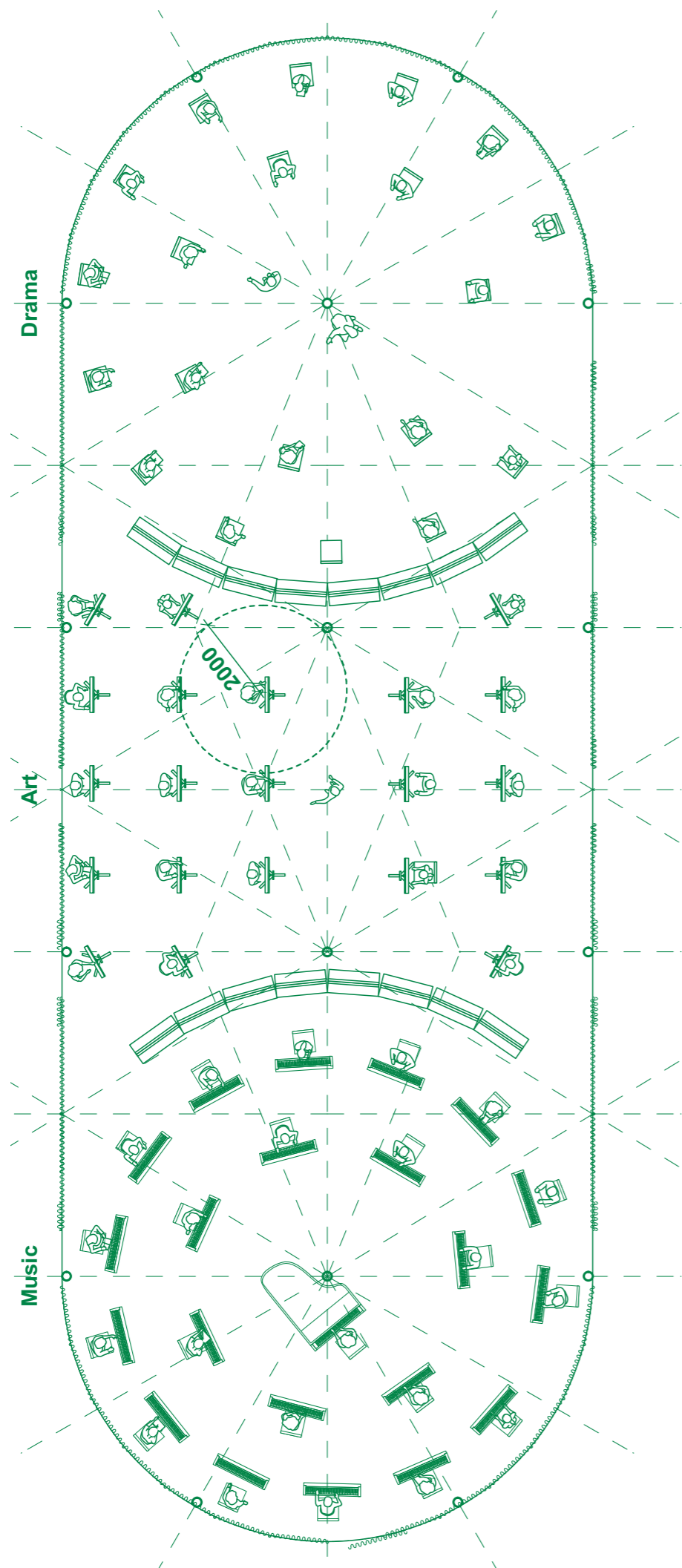


OPTION 2B  
CENTRE  
GORDON AVON



# Pop Up Schools



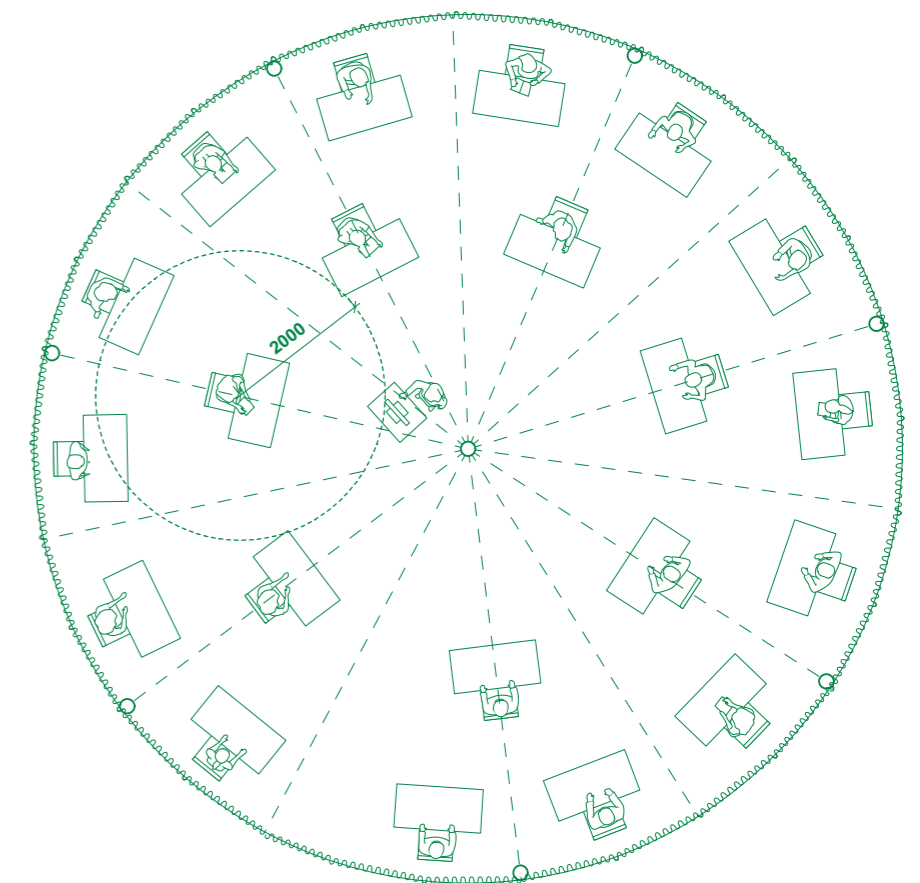


While the pandemic was causing disruptions to daily life, school activities and everywhere was shut down. We at CLTH sat down at the drawing table to discuss ideas and ways in which we could help mitigate restricted circulation within schools and civic buildings.

Pop Up Schools is an idea that aimed to address the challenges many schools in the UK and beyond faced when they re-opened. The design proposed a series of tent-like structures each of which was arranged to follow the two metre social distancing rules with the ability to host different classroom set-ups and activities. The idea tackles difficulties with social distancing among pupils while encouraging clockwise movement within and outside the schools in order to address the circulation issues.

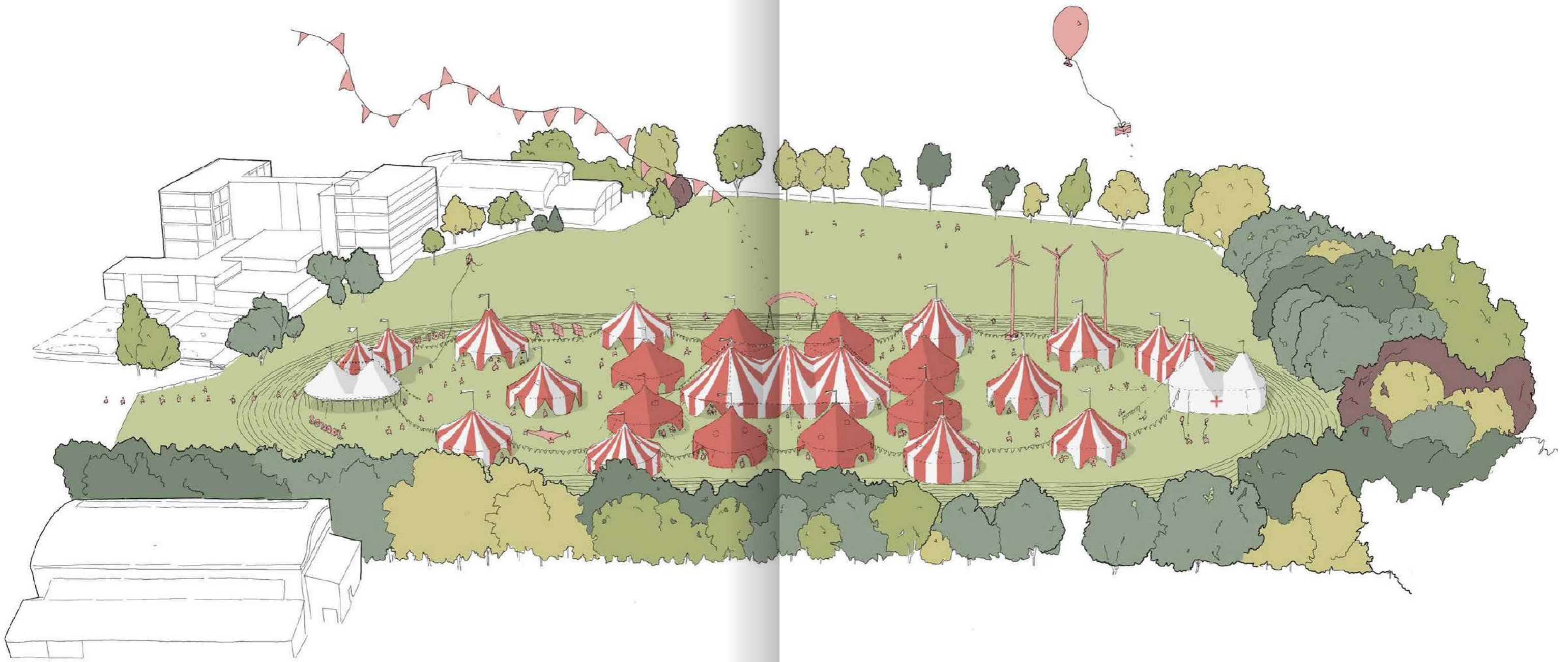
The proposal made use of materials like marquees and portable bathrooms which were dormant during the period of pandemic. Where appropriate, provisions for renewable energy sources were provided on site in form of pv arrays which were used for heating hot water.

The idea is simple and adaptable and can be used for various outdoor settings from football pitches to pedestrianised areas and neighbourhood parks.



→  
←  
Plans showing suggestions on how seating could be arranged within tents while compliant with lock-down regulations.

## Demountable spaces

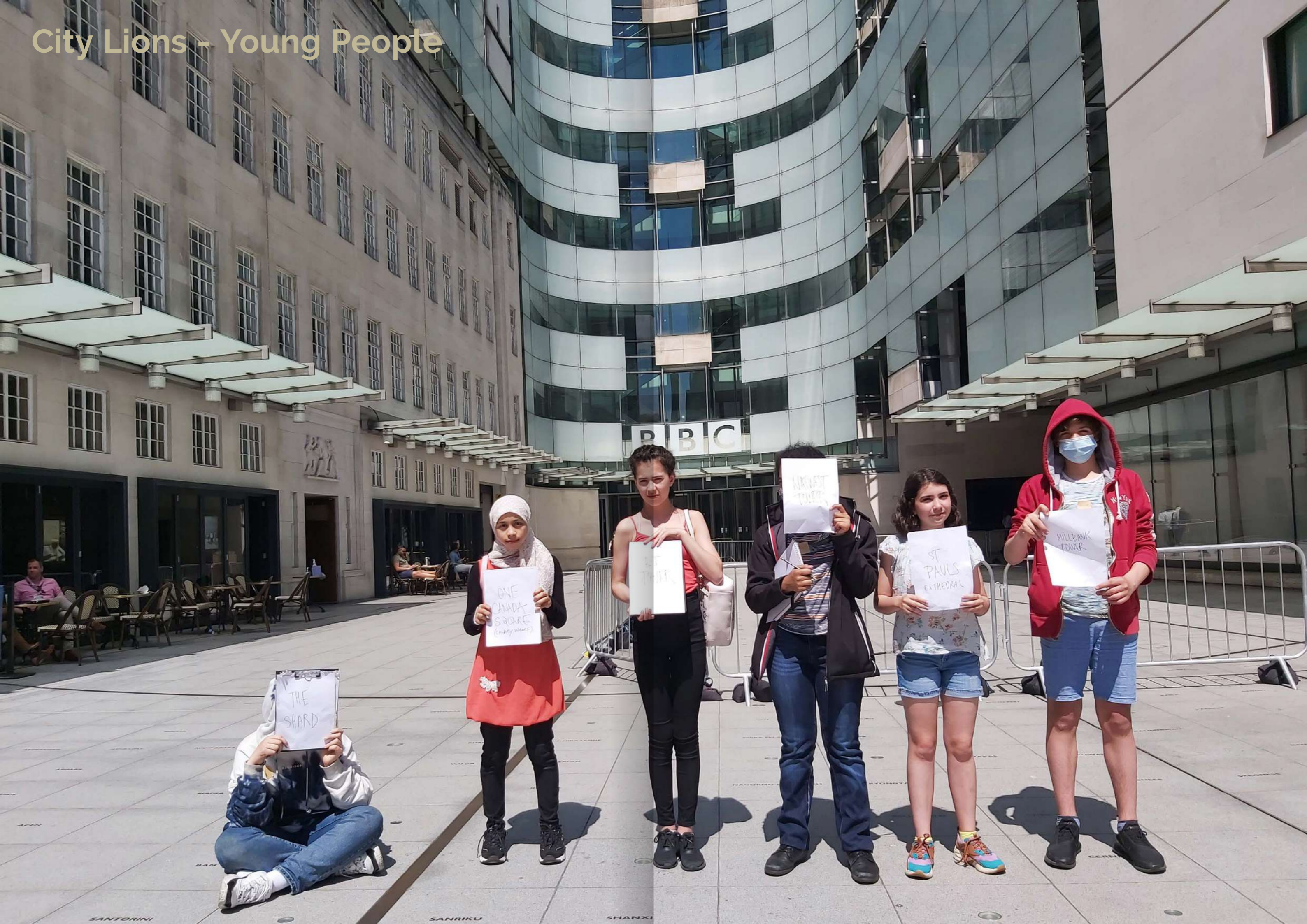


↑  
Tent like structures setup in  
field of schools.

## Demountable spaces



# City Lions - Young People



ONE  
CANADA  
SQUARE  
(Kingsway side)

THE  
SHARD

MARKET  
TOWER

MARKET  
TOWER

ST  
PAULS  
CATHEDRAL

MILBANK  
TOWER

SANTORINI

SANRIKU

SHANXI



In line with our core values and interest in making social impact, we initiated a collaborative work with the young people of City Lions a charity based in Westminster working with young people to transform their life through arts and therapy. We directly engaged with a particular group of people, within the age of 13-16 year old.

In an online evening talk we presented the practice's recent work which quickly led the young participants to ask questions about construction techniques, functionality, environment and architectural education. The evening was embellished with a quiz about our Revitalise Peckham Rye project and also some quick drawing exercises to gradually introduce the next step of the project.

This led to planned walks around Westminster, visits to the BBC and the Royal Institute of British Architects (RIBA) with students drawing, observing and identifying buildings on the walk



Equipping the future

# Curl la Tourelle Head Architecture

## Social Value

Podium Level  
Shakespeare Tower  
Barbican  
London EC2Y 8DR  
mail@clth.co.uk  
+44 (0)20 7267 0055

Further practice studios at  
Silver St, Deal  
& The Paragon, Bath.

Latest News:  
[www.clth.co.uk/news](http://www.clth.co.uk/news)

CLTH are signatories of the RIBA Inclusion Charter and are fully committed to making architecture more inclusive.

**Winner: RIBA National Award 2024: Alfreton Park Community School**

**Winner: RIBA East Midlands Building of the Year: Alfreton Park Community School**

**Winner: Civic Trust Awards 2024: Alfreton Park Community School**

**Finalist: Building Awards 2024 - Delivering Social Value**

**Finalist: London Construction Awards 2024 - Excellence in Community Engagement: Your Bruce Grove**

Winner: RIBA East Midlands Project Architect of the Year 2024

Winner: RIBA East Midlands Client of the Year 2024

Winner: RIBA East Midlands Award 2024

Winner: Civic Trust Awards 2024, Special Education Award: Alfreton Park Community School

Winner: AJ Architecture Awards 2023, Education: Alfreton Park Community School

Shortlisted: Building Awards 2024, Delivering Social Value: Alfreton Park Community School

Shortlisted: Education Estates Awards 2024, Inspiring Learning Spaces: Alfreton Park Community School

Shortlisted: Education Estates Awards 2024, Project of the Year Inclusive Design: Alfreton Park Community School

Shortlisted: Education Estates Awards 2024, Project of the Year School: Alfreton Park Community School

Shortlisted: Building Design Social Value Architect of the Year 2023

Longlisted: MacEwen Awards 2024, Architecture for the common Good: Hornsey Library

Shortlisted: Selwyn Goldsmith Awards 2024 for Universal Design: Alfreton Park Community School

Shortlisted: RIBA London Awards 2023: Hornsey Library

Winner: Inspire Future Generations Award 2022, Diversity in Action: Newham Virtual School

Winner: Haringey Design Awards 2021, Better Building Standards: Hornsey Library

Finalist: Architect of the Year Awards 2021: Public Building Architect of the Year