

Curl la Tourelle Head Architecture



Social Value

Empathise and engage

If there's one thing we've learned makes better buildings, it's empathy. Architecture never happens in isolation and simply by being interested and engaged, we've found it's possible to open up the conversations that connect a scheme to its clients and community.

We ♥ constraints

We believe that the more constraints there are, the better the architecture. If there aren't any constraints, we create them. Challenging sites, existing buildings and complex briefs almost always present incredible opportunities for great design.

Social detail

If a site's constraints guide the bigger design decisions, then it's empathy that informs the smaller, social details. These details frame the human narratives that aren't included in the brief, anticipating specific moments in the users' lives.

Passive future

To limit our environmental impact, we start with what is already there. By manipulating the form and fabric of a building—whether new or existing—we can work with the existing conditions of topography, light and orientation, and harness the natural energy sources offered by air, ground and water.

Hemp on our boots

Good architecture is as much about what happens on the building site as it is about what's on the drawing board. By working alongside contractors as well as clients we can ring-fence the ideas and details that matter, championing the quality of the building throughout its construction.

Curl la Tourelle Head



Contents

All through SEND School - **Alfreton Community Park School, Derbyshire**

Ecologically Sustainable - **Freshwater Biological Association, Lake Windermere**

Public Wellbeing and Tidal Pool - **Walpole Bay, Margate, Grade II**

Stronger Together - **Yours Bruce Grove**

Designing High Quality Homes - **Military Road, Housing for the Homeless**

Back to Front - **Social Housing in Sutton**

Re-thinking space - **Newham Virtual Schools**

Developing lifelong skills- **Gordon Brown Centre**

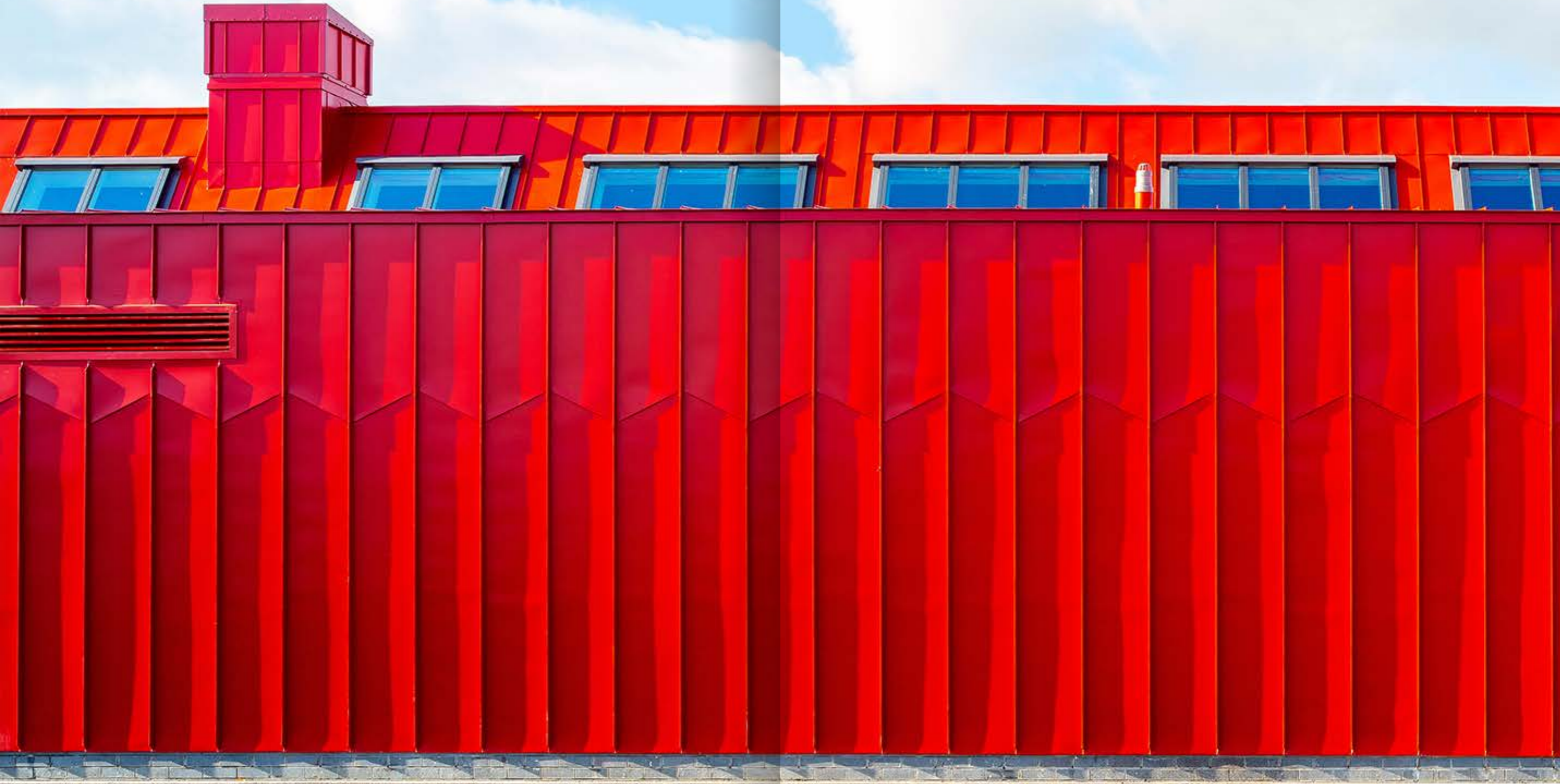
Demountable Space - **Pop Up Schools**

Equipping the Future - **City Lions - Young People**

Alfreton Park Community School

RIBA 
Architecture.com

NATIONAL
AWARD 2024
WINNER



RIBA NATIONAL AWARDS 2024

Alfreton Park Community Special School

Practice Name Curl la Tourelle Head Architecture
Client Derbyshire County Council
Contractor Henry Brothers
Principal Designer PFB Construction
Structural Engineer Price & Myers LLP
Services Engineer Method Consulting
Landscape Architect Faithful & Gould

Muyiwa Oki PRIBA
RIBA President

RIBA
Architecture.com

RIBA EAST MIDLANDS AWARDS 2024

Regional Award Alfreton Park Community Special School

Practice Name Curl la Tourelle Head Architecture
Client Derbyshire County Council
Contractor Henry Brothers
Principal Designer PFB Construction
Structural Engineer Price & Myers LLP
Services Engineer Method Consulting
Landscape Architect Faithful & Gould

Muyiwa Oki PRIBA
RIBA President

RIBA
Architecture.com

RIBA EAST MIDLANDS AWARDS 2024

Project Architect of the Year 2024 Wayne Head

Project Name Alfreton Park Community Special School
Practice Name Curl la Tourelle Head Architecture
Client Derbyshire County Council
Contractor Henry Brothers
Principal Designer PFB Construction
Structural Engineer Price & Myers LLP
Services Engineer Method Consulting
Landscape Architect Faithful & Gould

Muyiwa Oki PRIBA
RIBA President

RIBA
Architecture.com

RIBA EAST MIDLANDS AWARDS 2024

Building of the Year 2024 Alfreton Park Community Special School

Practice Name Curl la Tourelle Head Architecture
Client Derbyshire County Council
Contractor Henry Brothers
Principal Designer PFB Construction
Structural Engineer Price & Myers LLP
Services Engineer Method Consulting
Landscape Architect Faithful & Gould

Muyiwa Oki PRIBA
RIBA President

Sponsored by
 EH Smith
Architectural Solutions

RIBA
Architecture.com

'...this school changed my life,'

Ryan Jones,
student at Alfreton Park



↓
The school forms a campus like family of nurturing buildings within a park setting

Following the advice of Frank Lloyd Wright →
the school is positioned on the brow of the hill, rather than its crest, creating a school "of the hill", not on it



Fresh air and fun at CLTH's SEND school
How to set up apprenticeships in practice
Forging ahead: Sumayah Al-Solaiman
Future winners: Four firms to watch

The RIBA Journal
April 2024
£15/€30/US\$35

ribaj.com

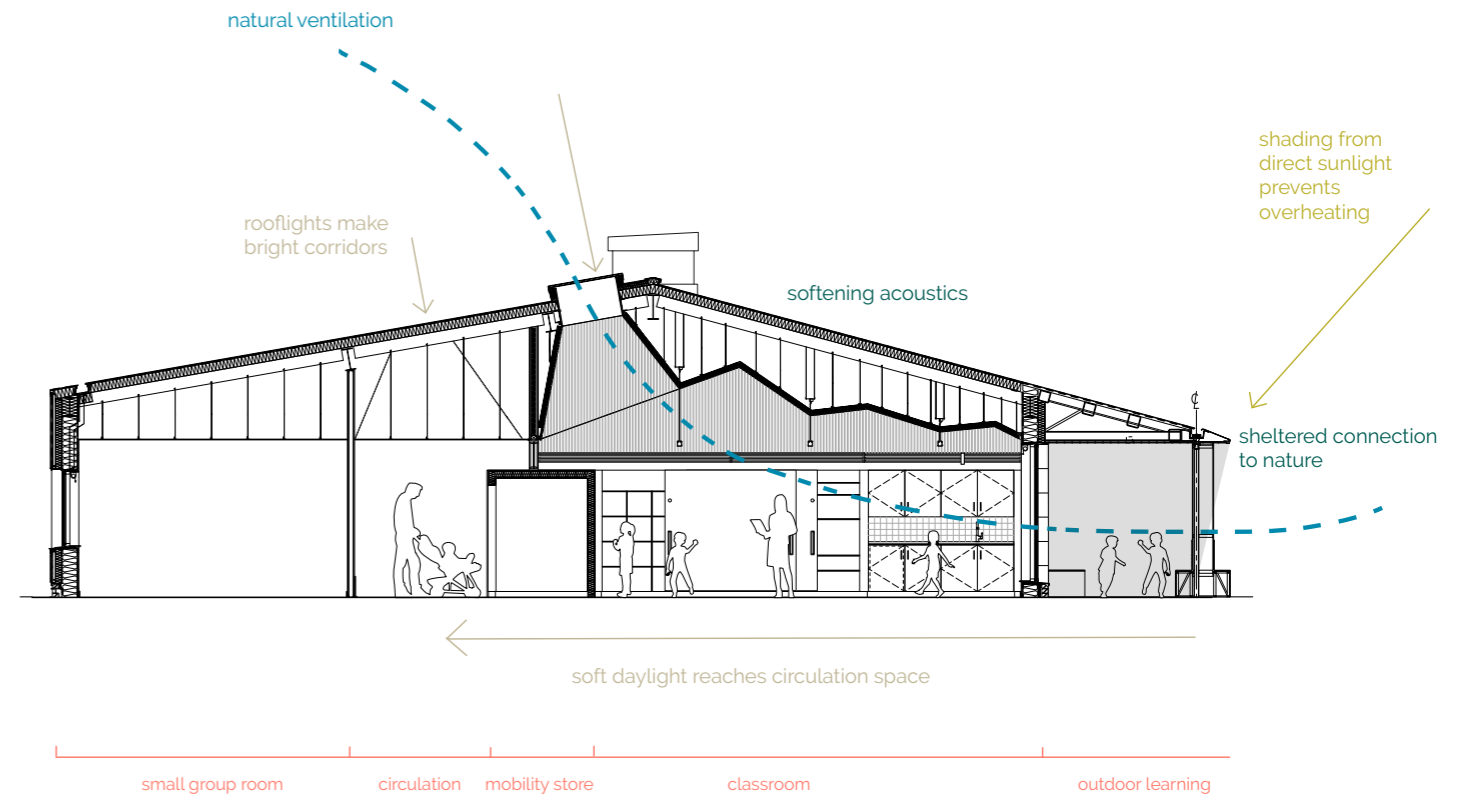
Secure, welcoming and inclusive learning environments

Light filled classrooms

Visibility and surveillance between classrooms and circulation

Sociable circulation

All through SEND School

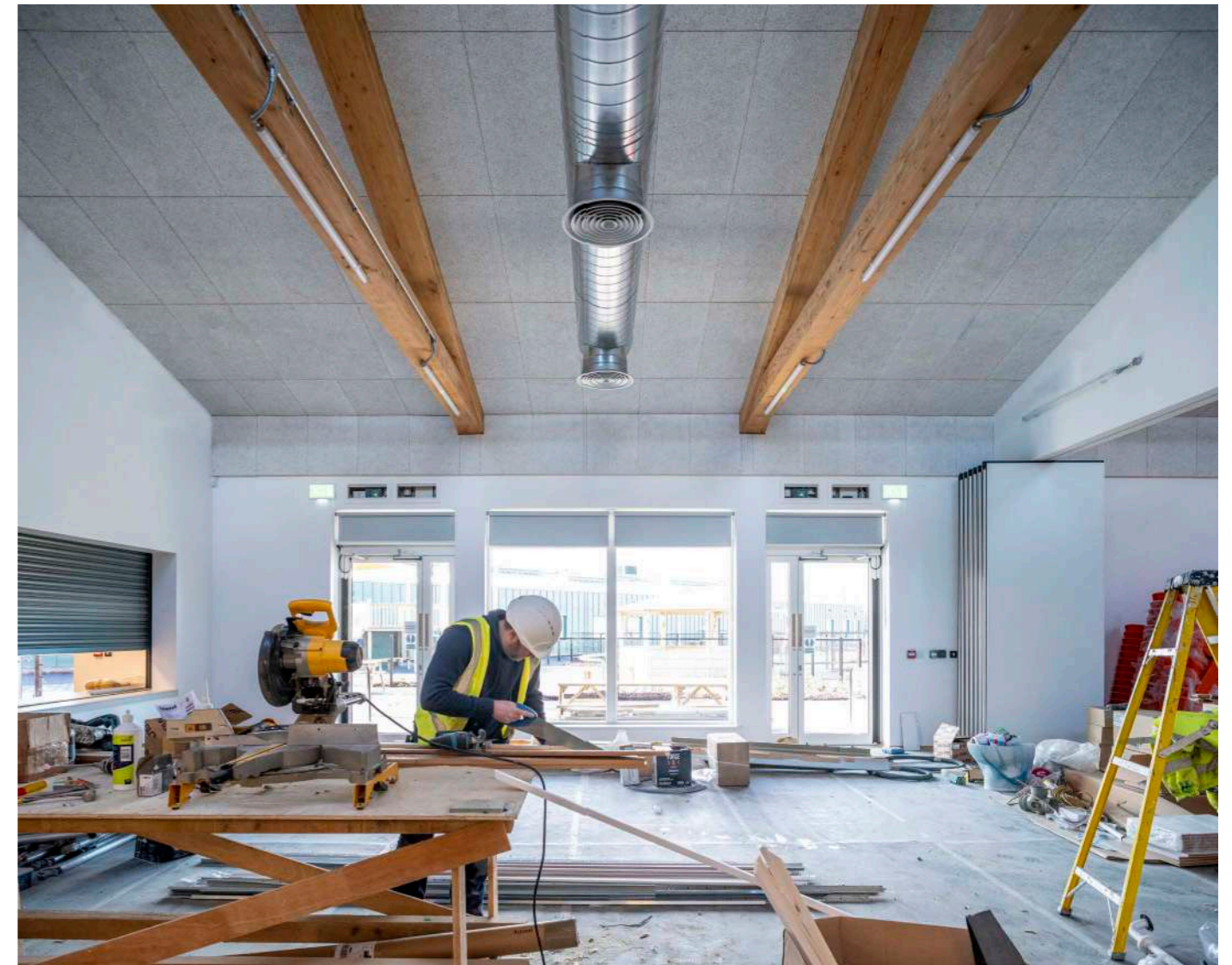


↑
 A simple and efficient single storey roof section is used throughout, a generator for elegance in its setting, creating open and light internal spaces for activities



All through SEND School





‘We have had a reduction in behaviour incidents, we see an improvement in communication from the pupils and generally ... pupils are happier,’

Josie O'Donnell, Headteacher Alfreton

RIBA  Architecture.com | NATIONAL AWARD 2024 WINNER

RIBA  Architecture.com | CLIENT OF THE YEAR 2024 SHORTLISTED

RIBA  Architecture.com | EAST MIDLANDS AWARD 2024 WINNER

RIBA  Architecture.com | EAST MIDLANDS BUILDING OF THE YEAR 2024 WINNER

RIBA  Architecture.com | EAST MIDLANDS PROJECT ARCHITECT OF THE YEAR 2024 WINNER

RIBA  Architecture.com | EAST MIDLANDS CLIENT OF THE YEAR 2024 WINNER



All through SEND School

Freshwater Biological Association





"We have been working with the team at CLTH for several months on an ambitious feasibility study. From the get-go I have found CLTH to be really focused on understanding our organisational ambitions and then turning that into an inspiring architectural vision.

At the same time their hands-on, grounded and practical approaches have ensured we keep our feet on the ground regarding technical, planning and cost considerations! I very much view CLTH as an essential part of our programme team and would have no hesitation in recommending them."

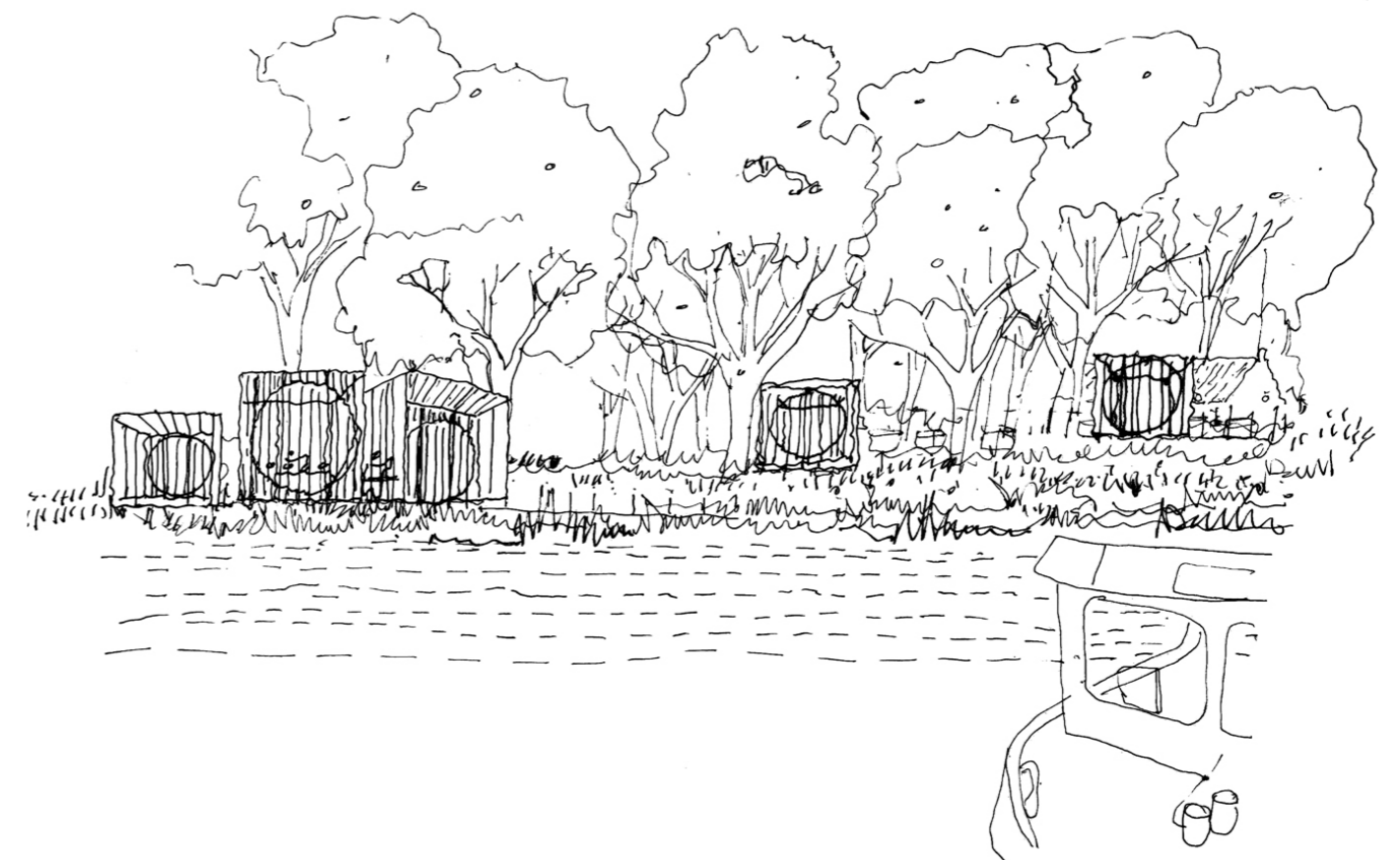
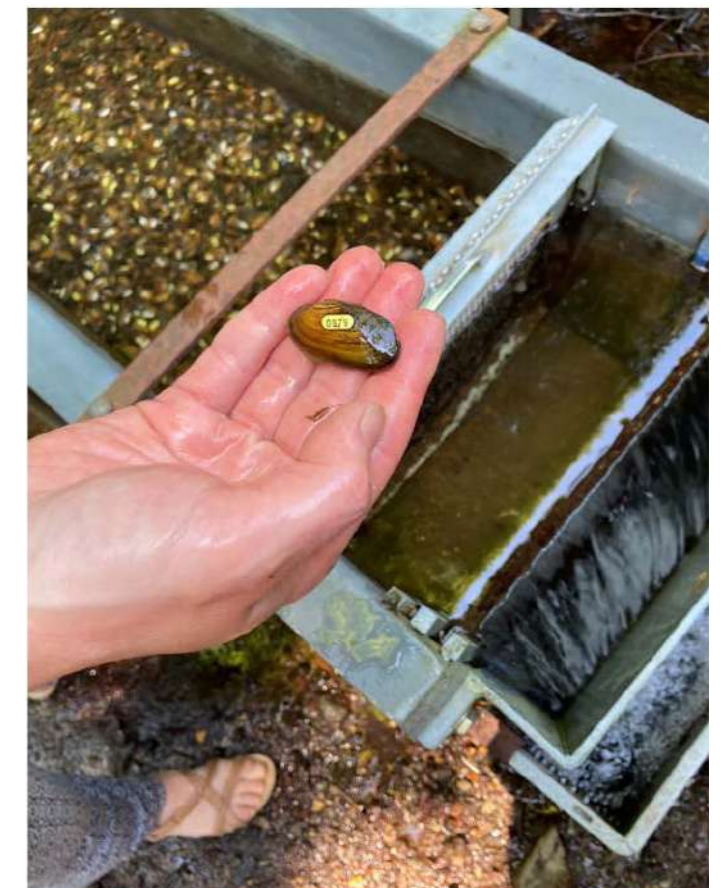
Simon Johnson
 Executive Director, Freshwater Biological Association



The design will feature bio-secure facilities, teaching labs and equipment storage, alongside sustainable sanitation, and water management solutions. We intend to install vertical flow wetlands to filter wastewater and achieve Net-Zero in construction and operational energy.



Early sketch design of the proposal nestled into the canopy of the National Park.



Ecological Sustainability



↖
 A proposed masterplan of the Freshwater Biological Association's new premises. The facilities will include bio-secure facilities, teaching labs and equipment storage.

←
 Working closely with the FBA scientific team to create a new sanctuary for the mussels to facilitate their reintroduction into the wild.



Habitat restoration and water quality improvements

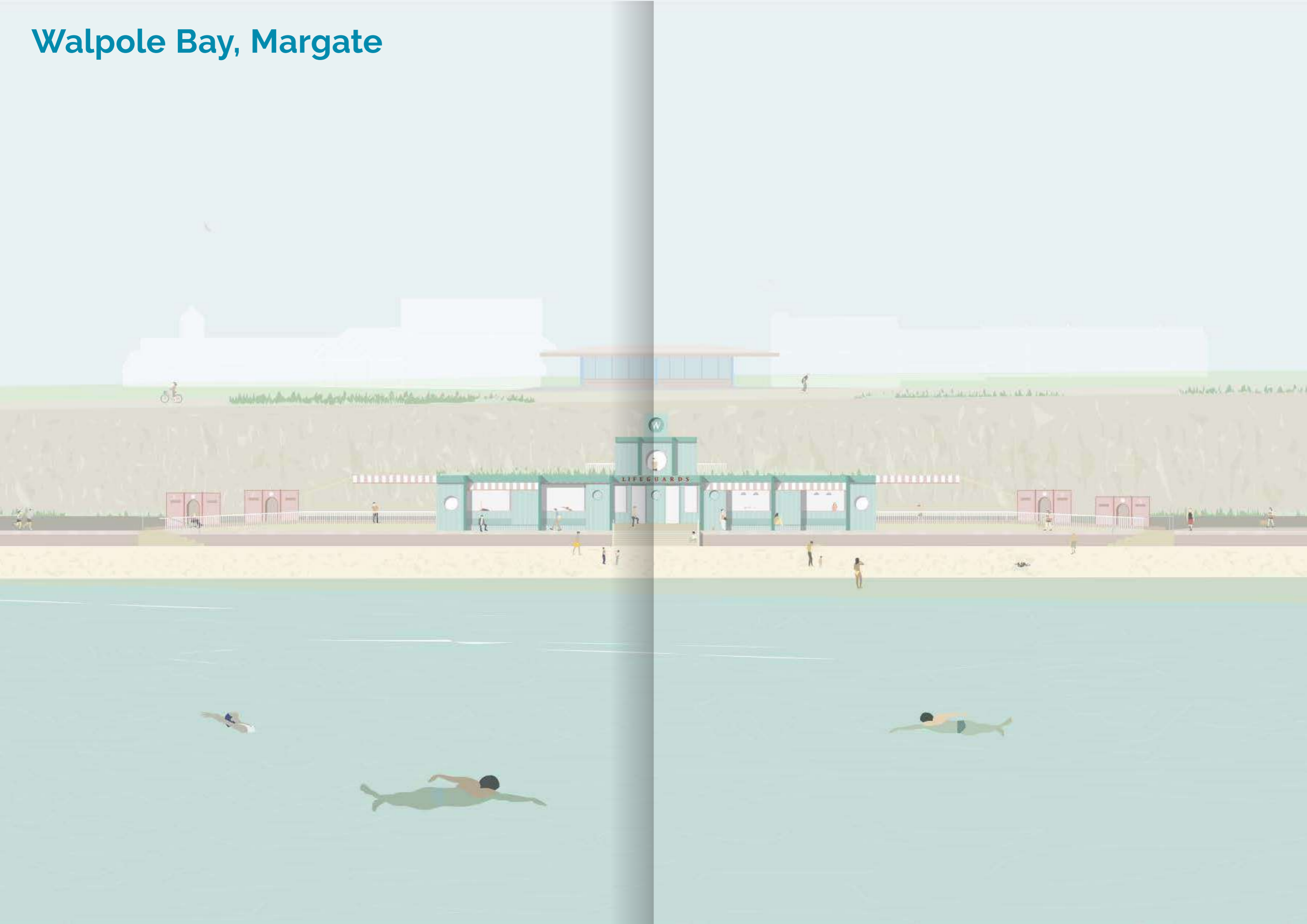
Sensitive design in the Lake District National Park

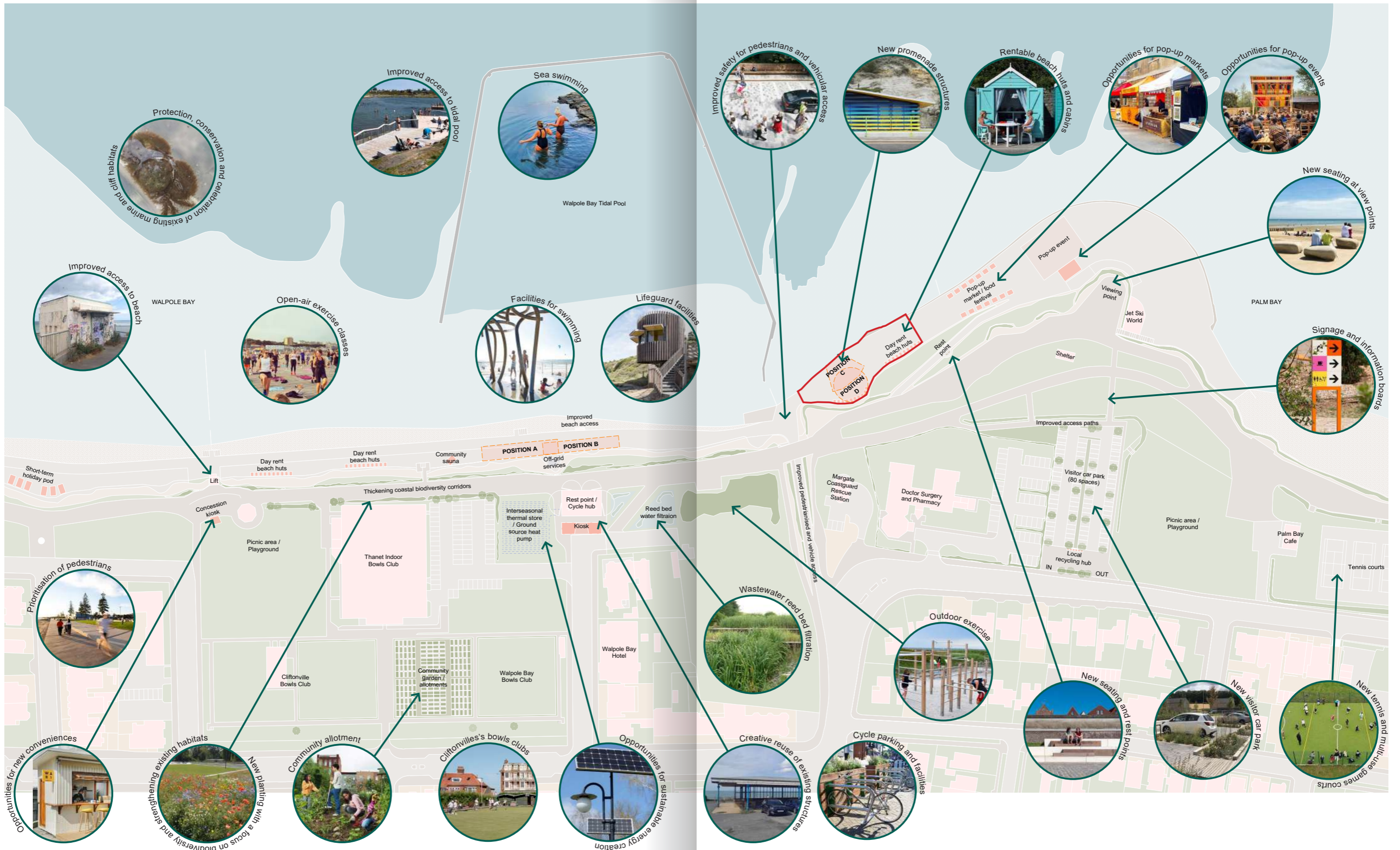
Sustainable sanitation and water management solutions

Protecting endangered freshwater species

Ecological Sustainability

Walpole Bay, Margate

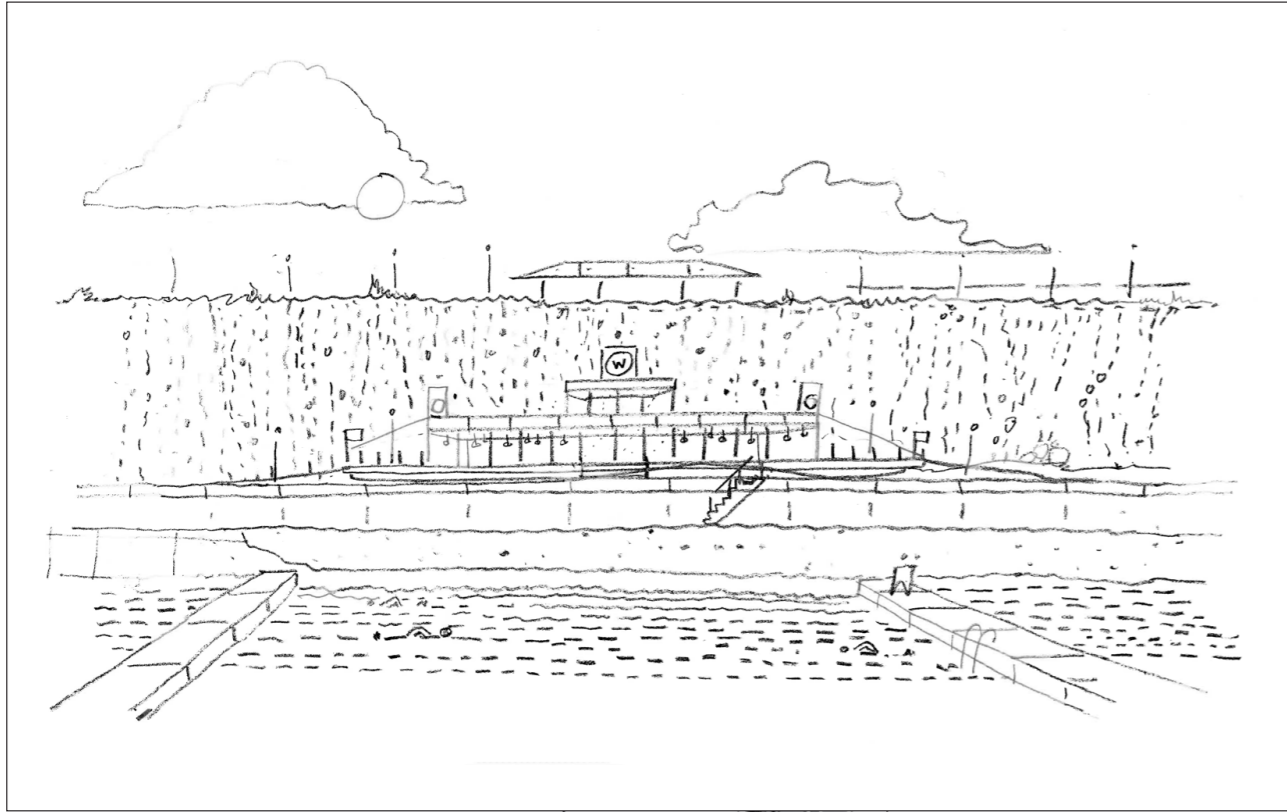




↑
Part of the materials presented during the two week public engagement, which took place in October 2023.

Upgrading historic promenade buildings and public realm
Protecting the local ecology
Improving health and wellbeing along the coast of Margate

Public Wellness and Tidal Pool



Q. What uses would you like to see within the Wellbeing Space?

Q. Which of the proposed like and why?

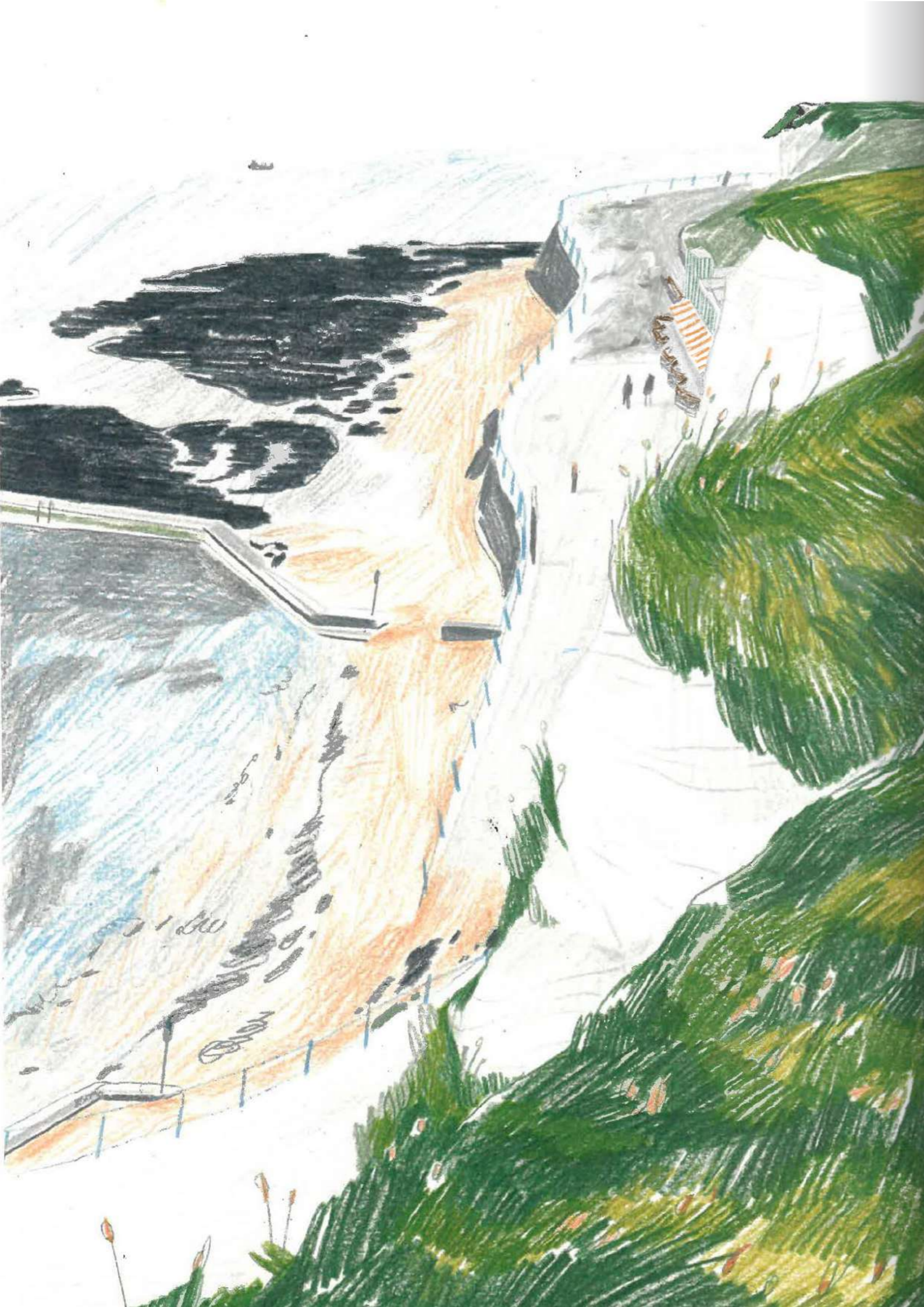


↑
As a tool for further public engagement, CLTH encouraged the visitors to think about the future of Walpole Bay, write down their thoughts and aspirations and send them back to our office.

➔
View of community spaces in the Margate promenade building



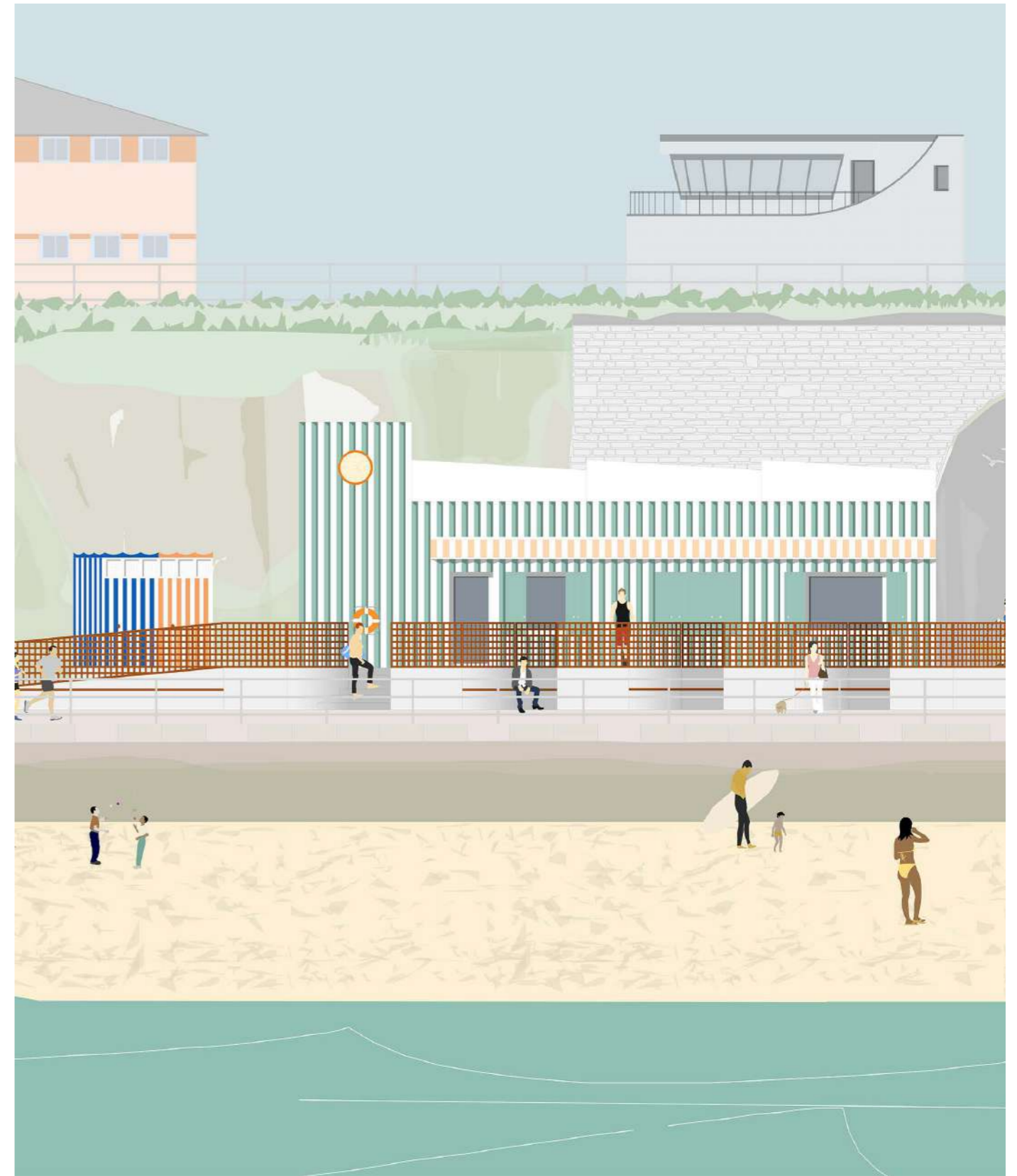
Public Wellness and Tidal Pool



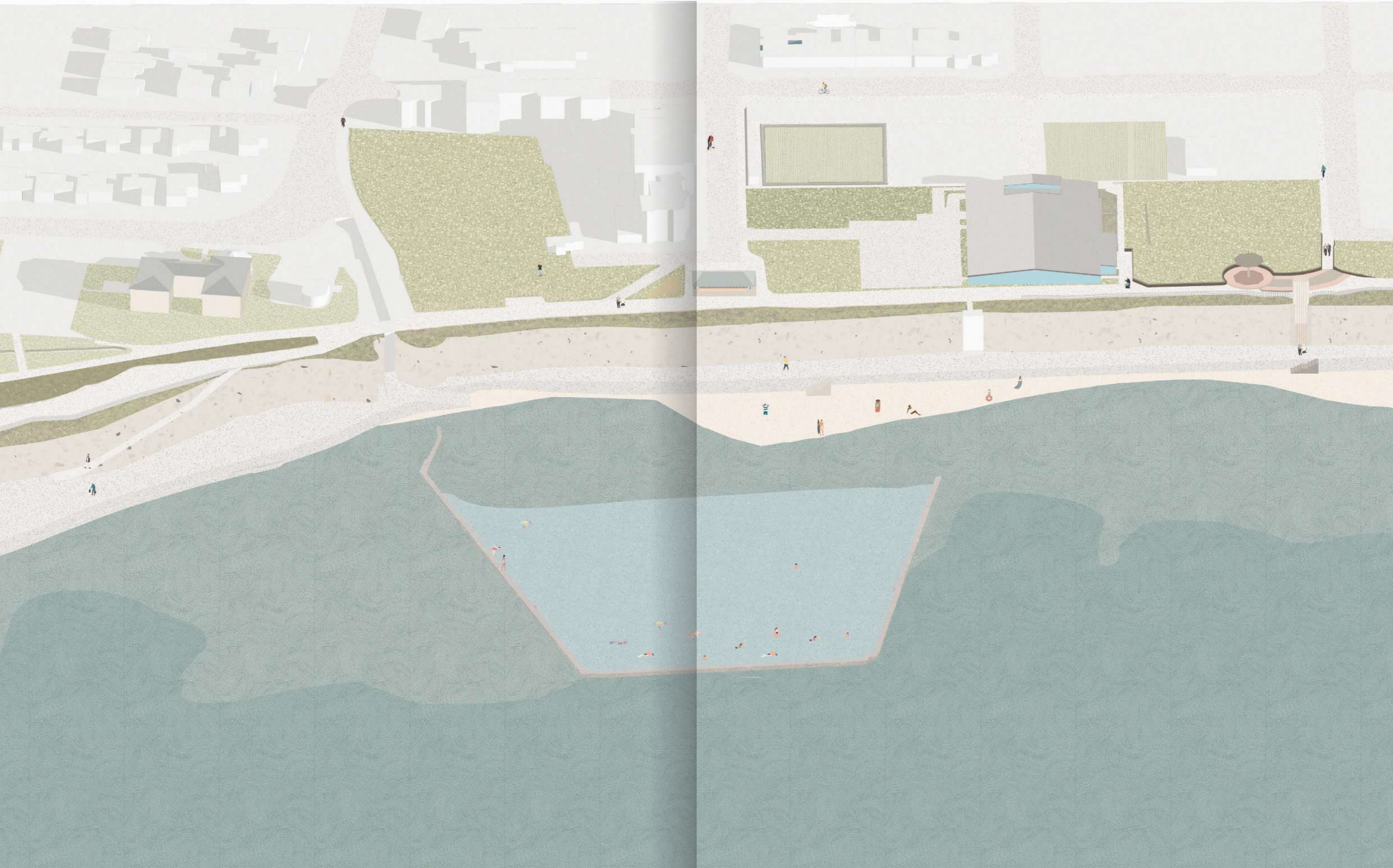
Looking from the Upper Promenade overlooking Walpole Bay Tidal pool



Initial sketches of promenade building



Public Wellness and Tidal Pool



Public Wellness and Tidal Pool

Your Bruce Grove

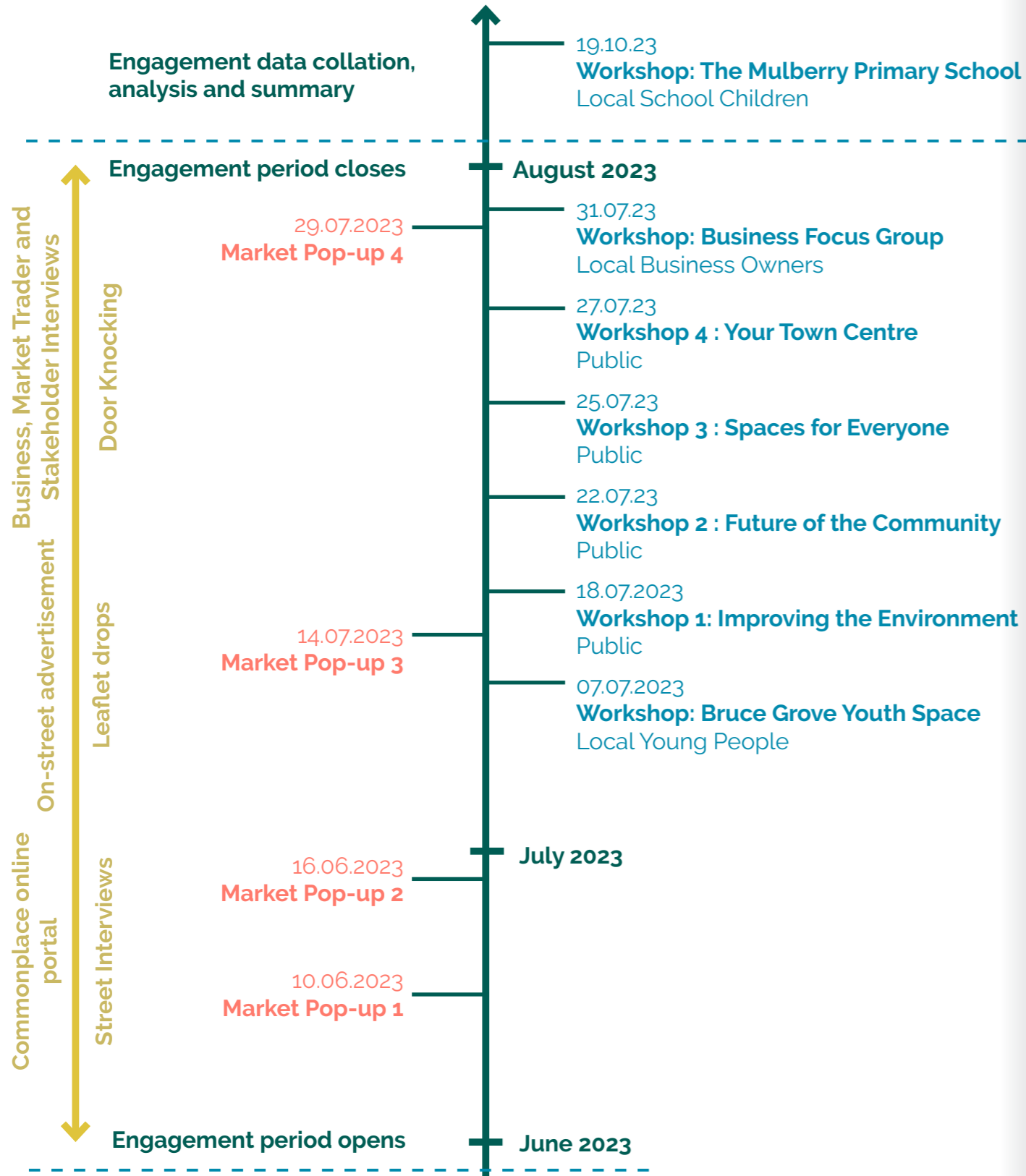


1000+
in-person
engagements

500+
online
contributions

7
themed
workshops

4
market
pop-ups



Our Public Life Diaries which we have developed as a pocket-size booklet to scribble, sketch and jot down thoughts and observations in throughout the day. This tool enable the design team to record, analyse and live Bruce Grove.

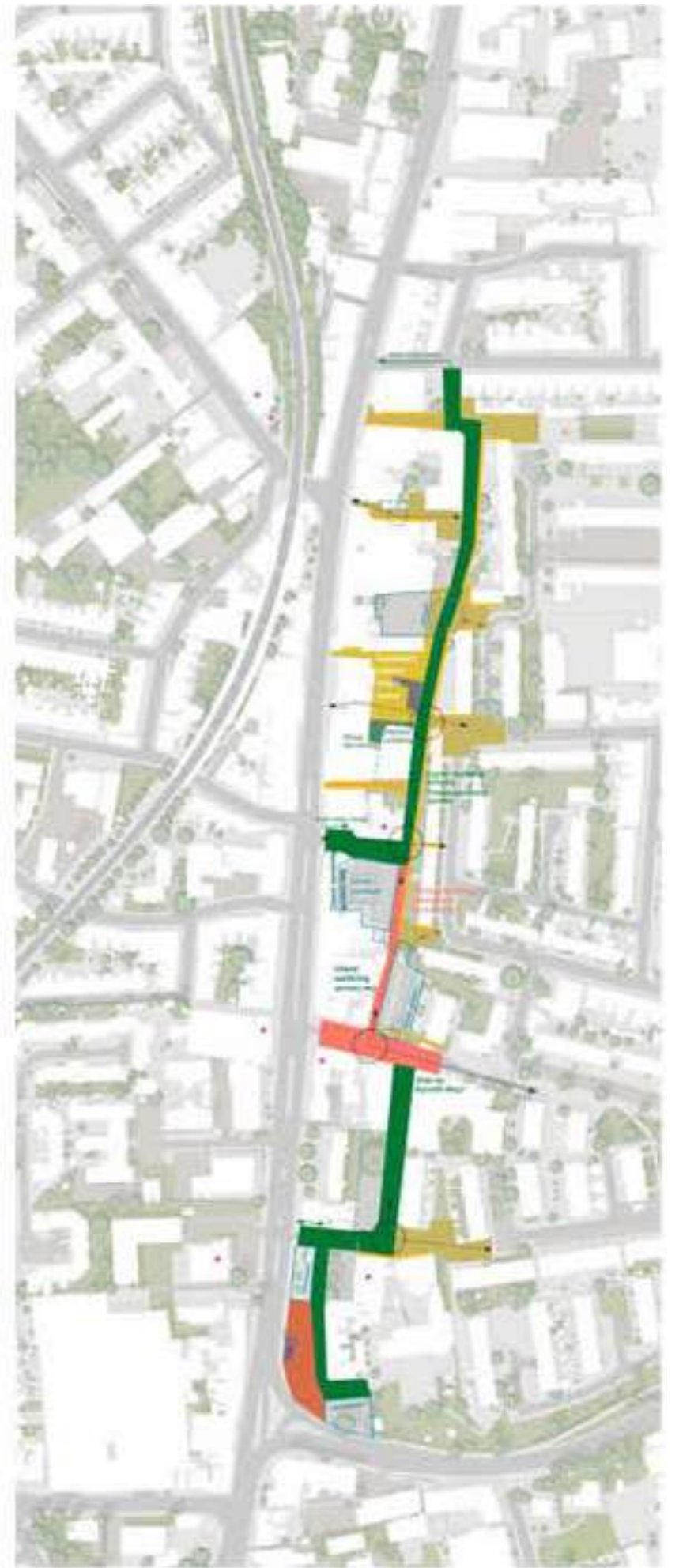
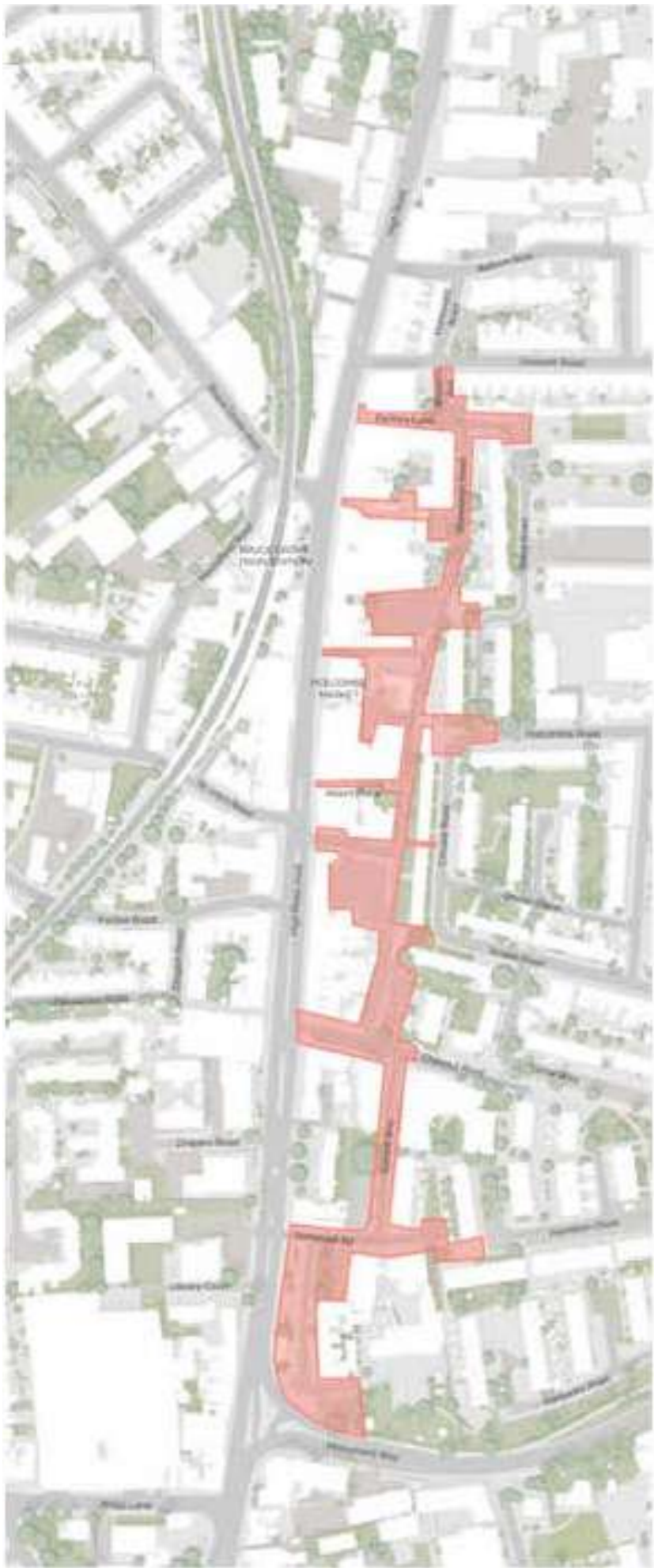


'Thickening' Tottenham High Road

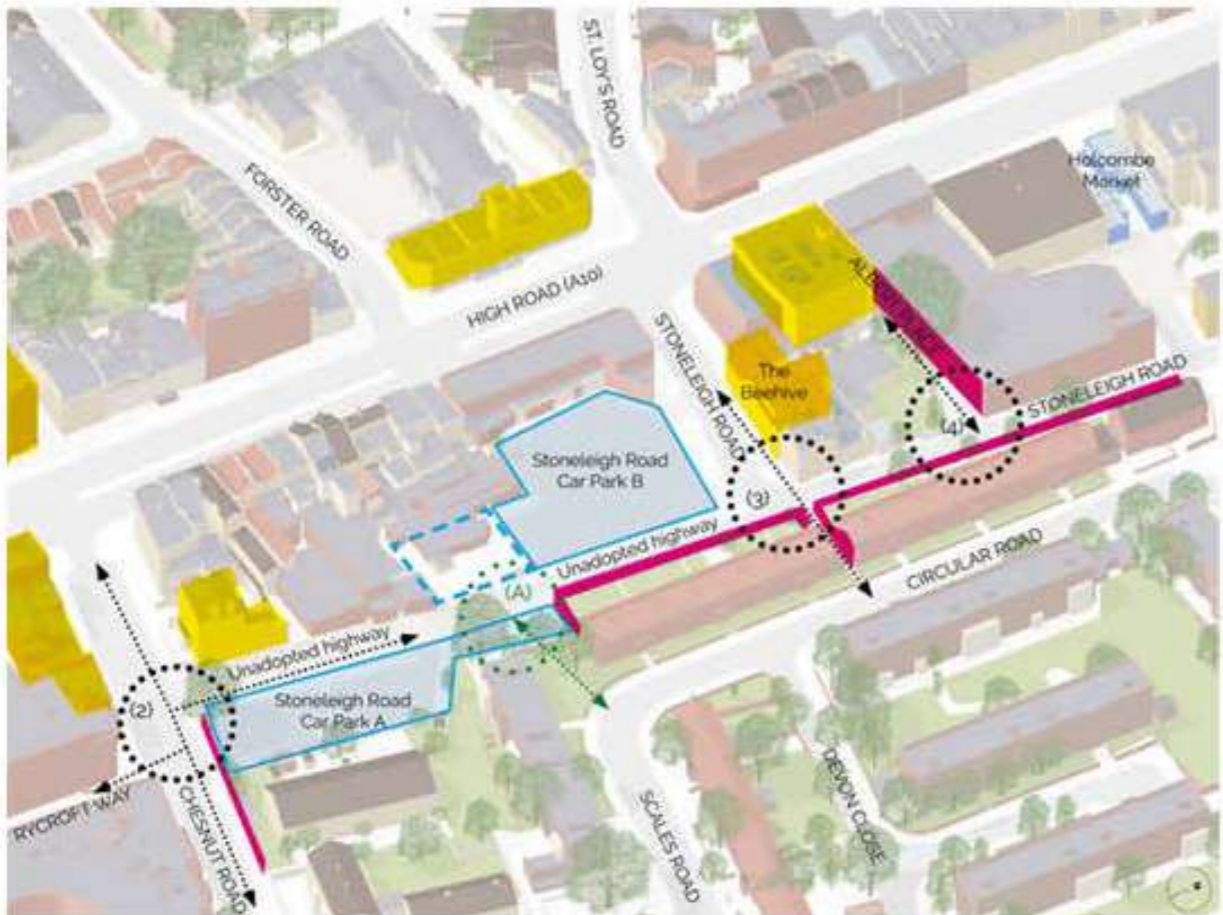
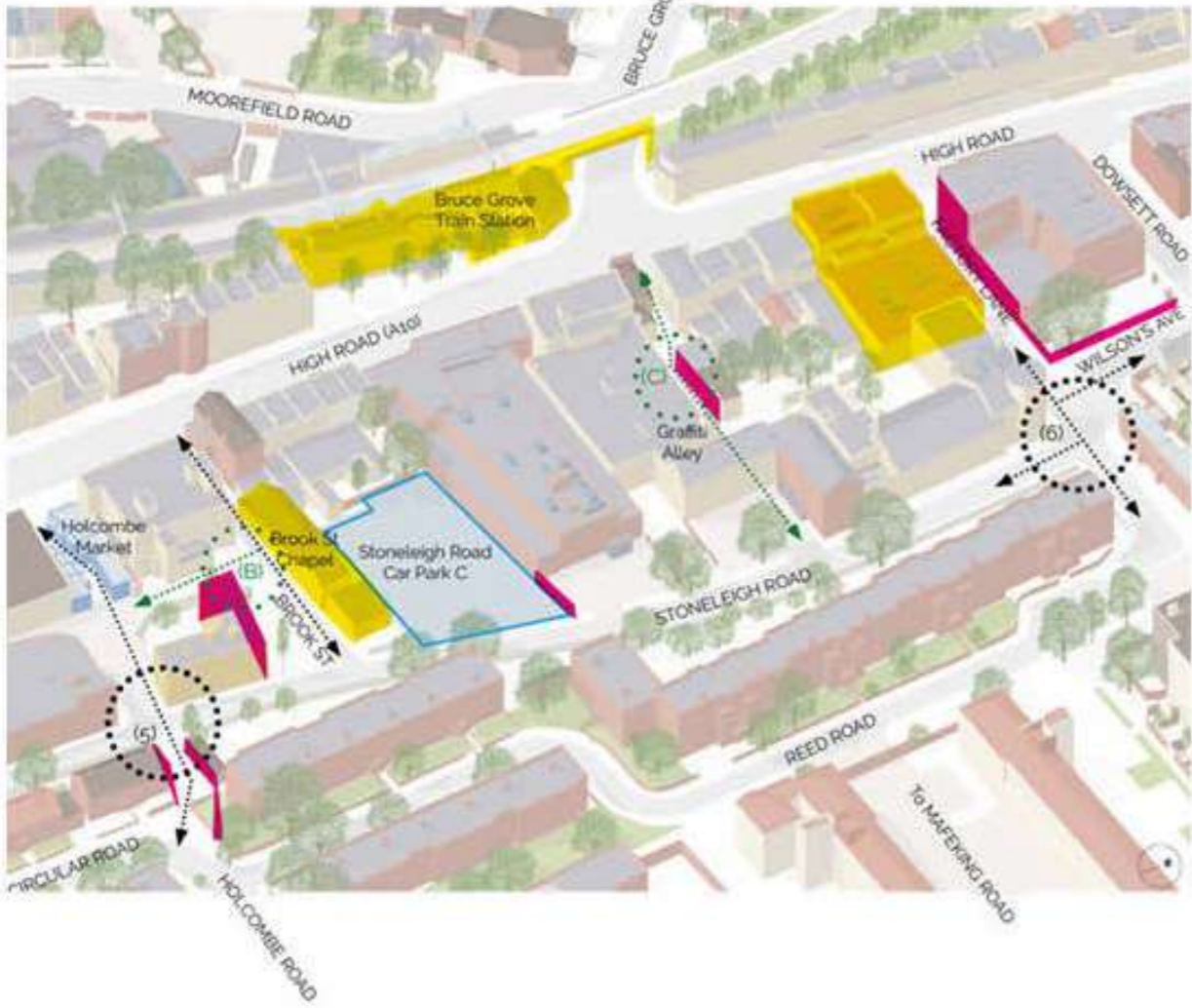
In-depth urban analysis and holding community engagement workshops

Carefully planned activities held using a variety of tools and techniques

Stronger together



Stronger together



↑
Photos from some of the engagement events during the Market Pop-Up sessions, the Workshops and street interviews.

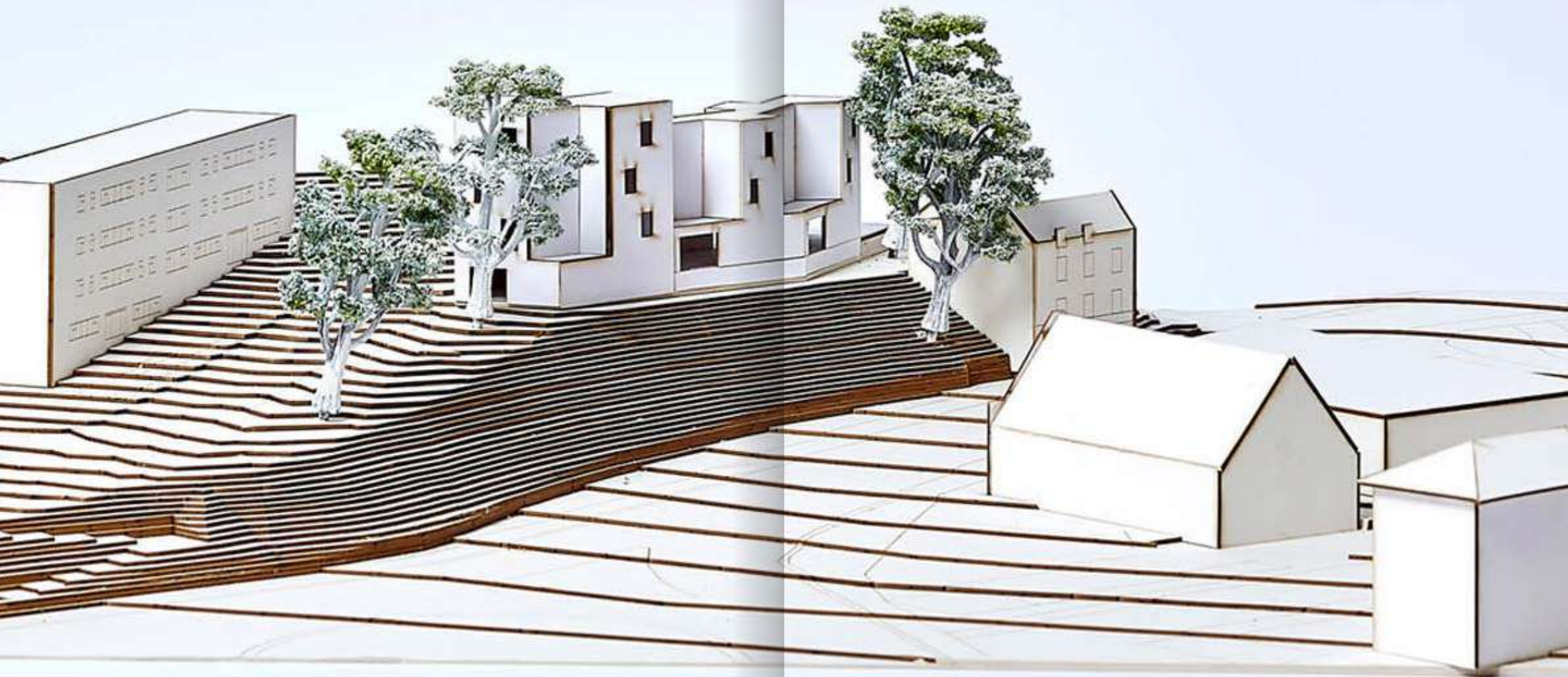
←
Setting as site-wide public realm strategy through identified 'pivot points' of North-South & East-West connections and opportunities for improvements.

→
A young person drawing illustrating their vision for Bruce Grove.



Stronger together

Military Road Housing for the Homeless





↑
Model making at different scales
as a tool for testing,
communicating and designing
spatial solutions.

→
Historic etching of the site in 1837.



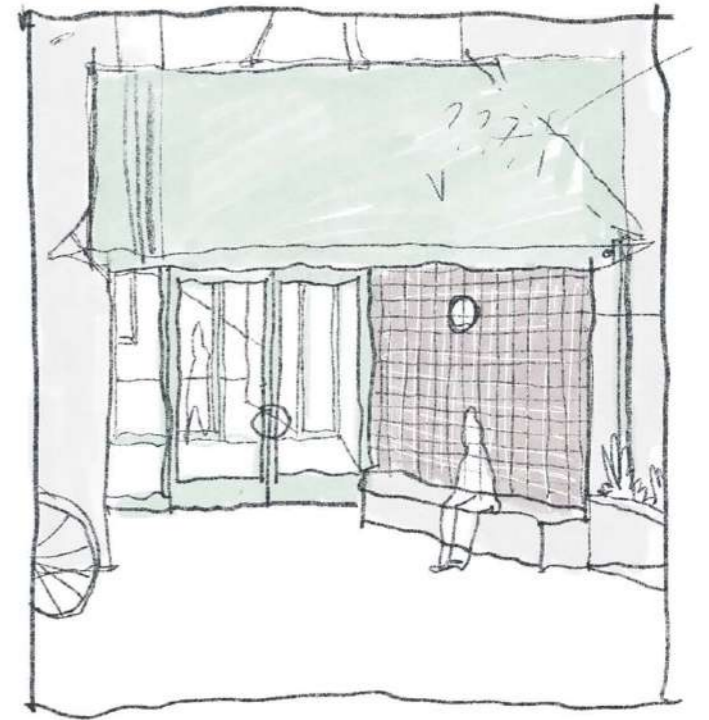


Angled façades add interest to the elevation and allows for extended three storey façades to this less sensitive side of the building.

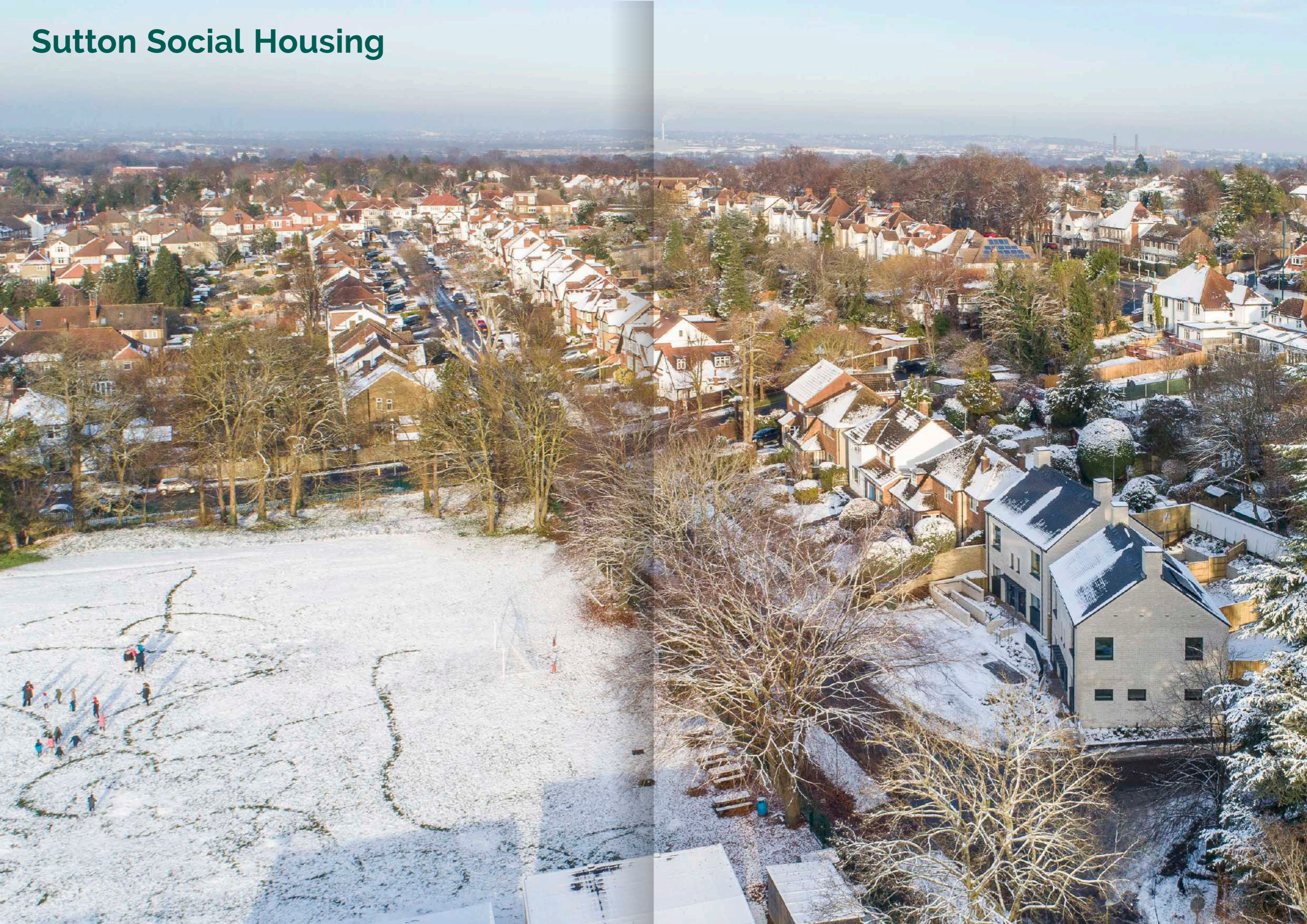


↑
Through the balcony and up
to Dover Castle.

→
Interior view of interiors
showing landscape beyond
through window views.



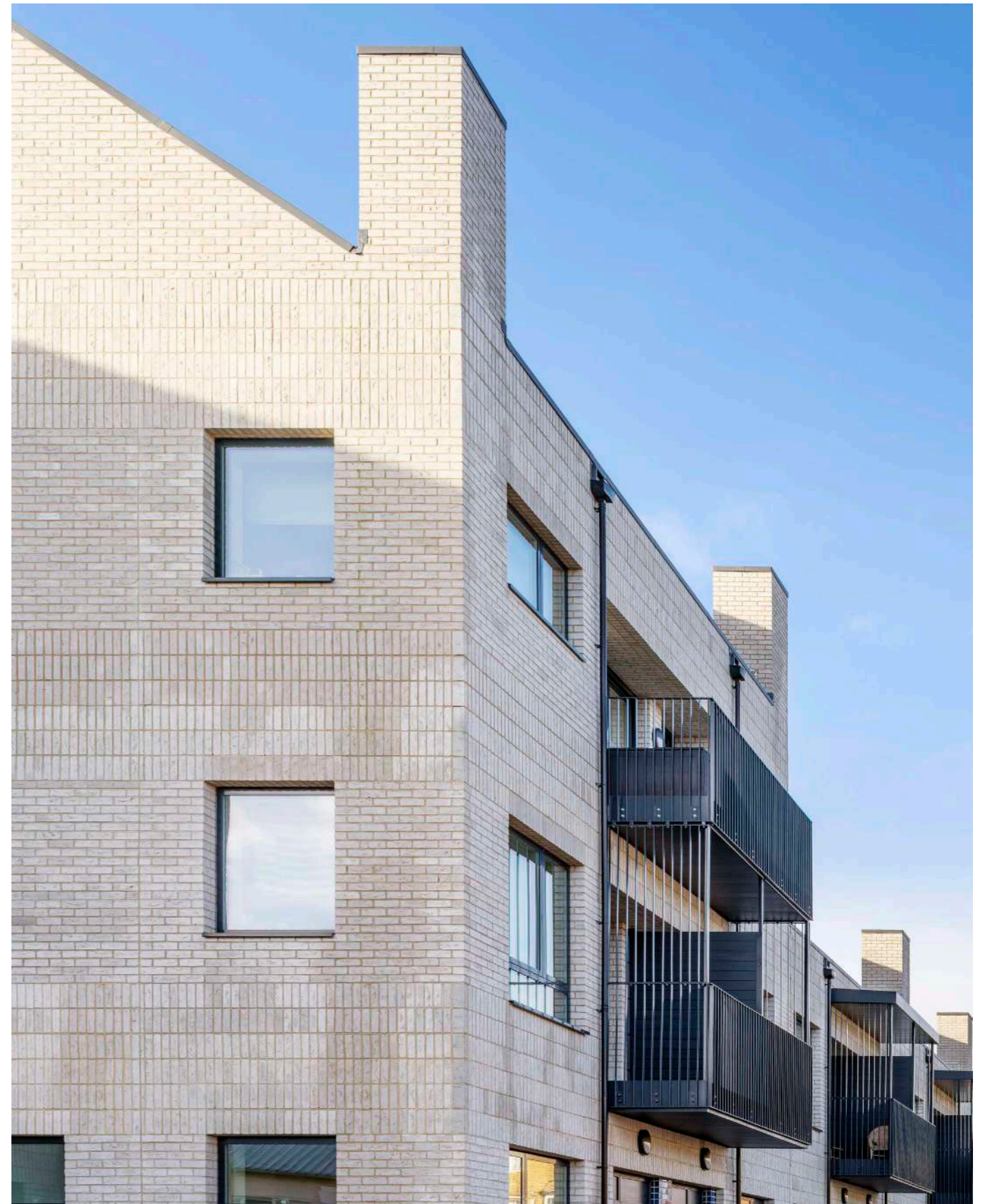
Sutton Social Housing





↑
Early sections exploring the contextual conditions of specific sites. Some were small and only offered the opportunity to construct a couple of new homes; others had space for larger-scale housing with multiple units.

←
The first residents moving into their new homes!



Front to Back



The site had a tough urban setting behind some garages, so we gave the homes walled gardens to offer sanctuary and safety



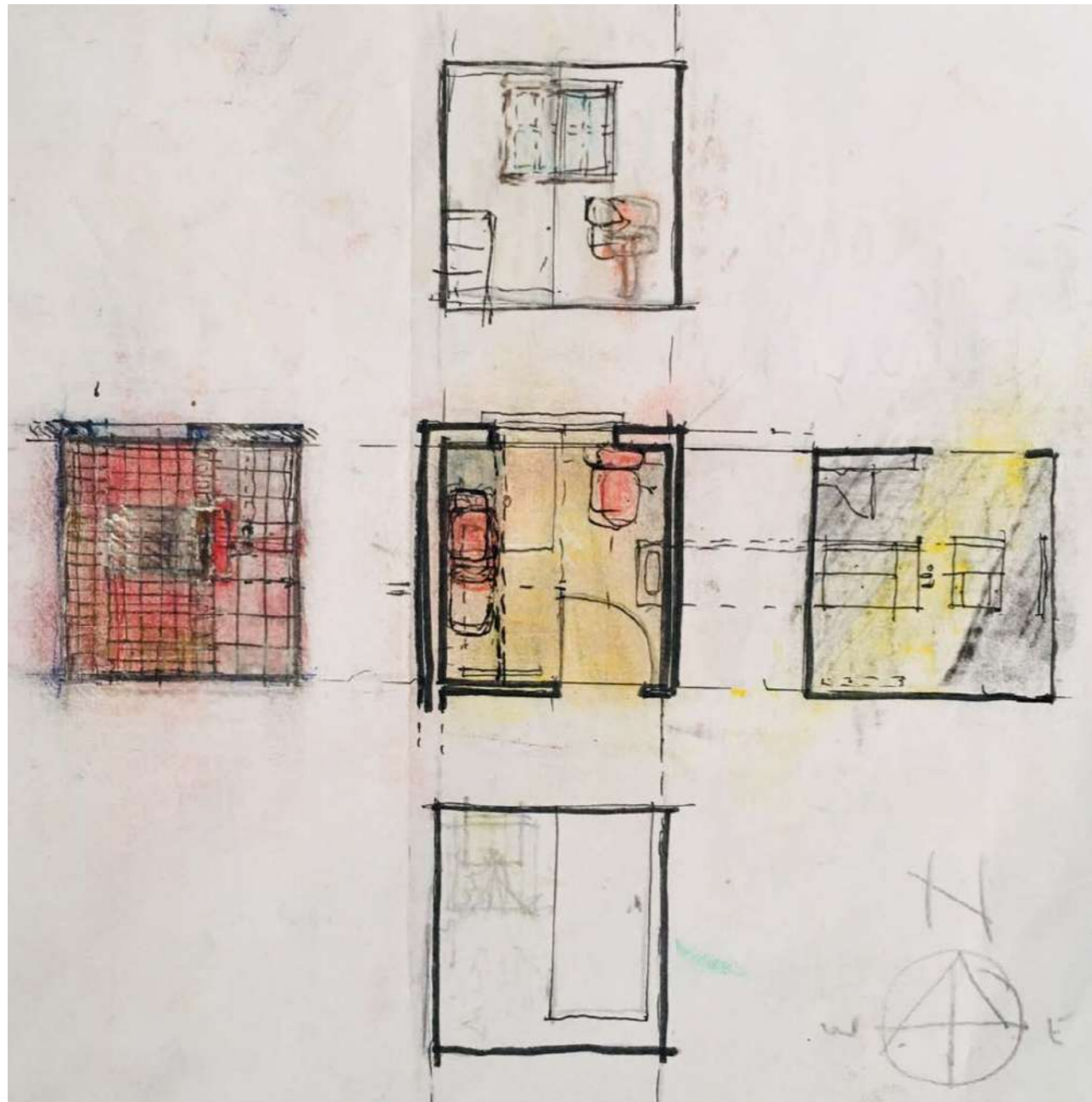
This environmental section shows our early intent to build with a cross-laminated timber (CLT) frame, giving a natural, almost Scandinavian, quality to the inside spaces. The distinctive chimneys respond to the suburban location and also assist with the passive ventilation of the homes.



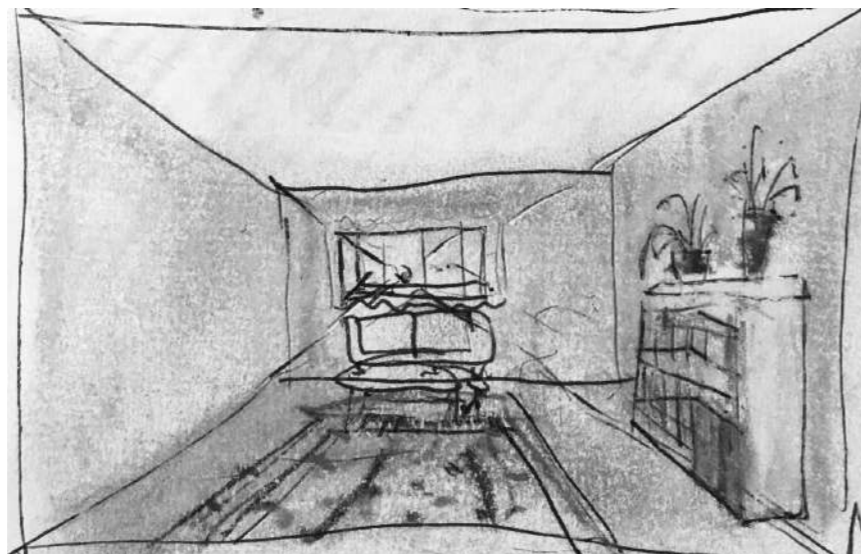
Front to Back



Newham Virtual Schools



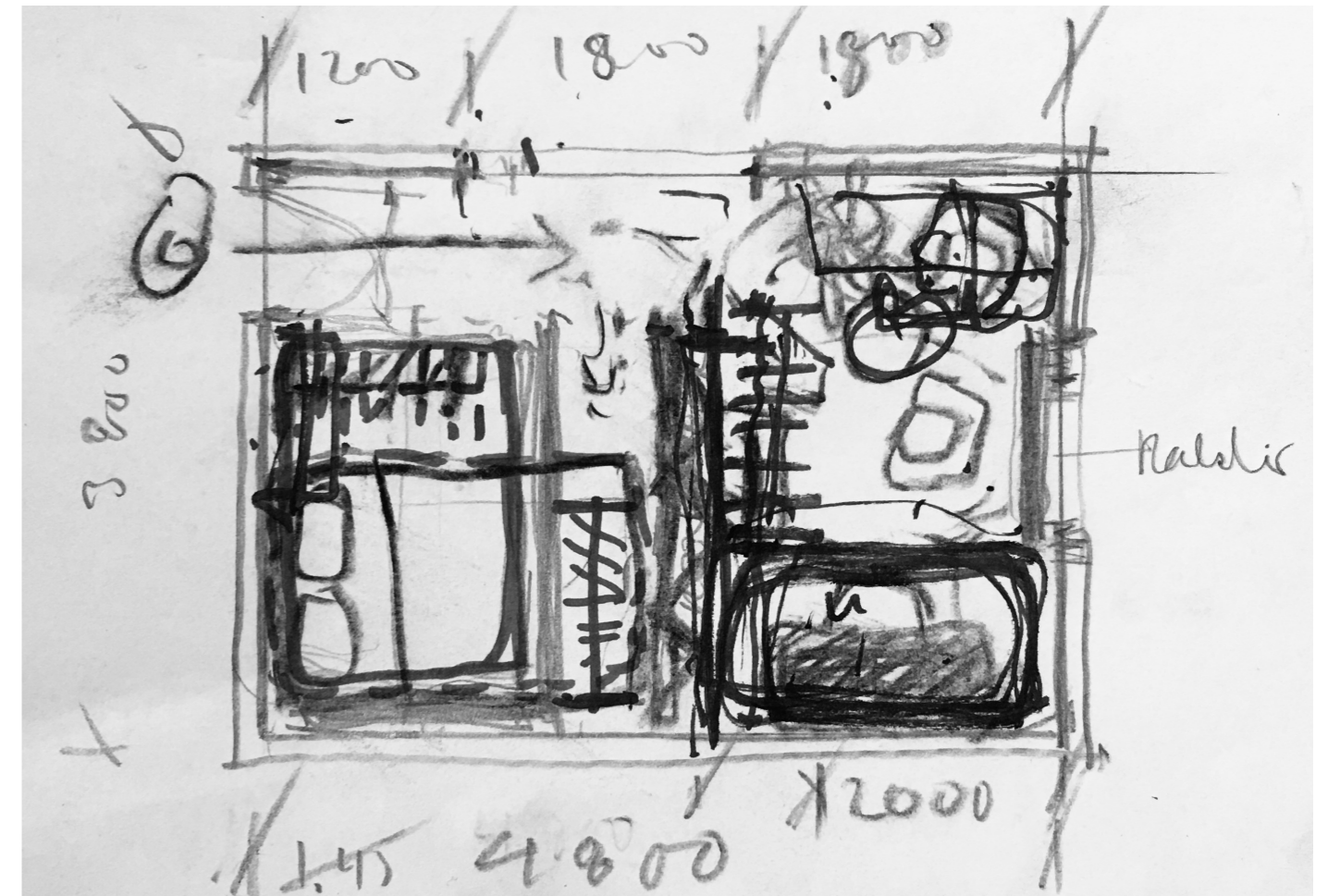
Room studies, light studies and measurements taking done by participants during virtual training.



We recently completed an eight weeks programme with the care leavers at Newham Virtual School in London Borough of Newham. Where we explored how participants could best inhabit their flats, most of them having moved in recently.

Starting out with a package of materials and drawing equipment - including high-quality tape measure and the iconic triangular scale ruler. Participants were taught how to measure a particular room in their flat and subsequently draw up scaled plans and elevations. They also studied the existing qualities of their rooms, including materials, colours, textures, and light in particular. This was then made into propositional drawings with focus on the individual participant's ideas and needs.

The weekly sessions provided an opportunity to re-iterate and refine design ideas while providing the participants not only with a design portfolio documenting their work, but also with a range of transferrable skills and life skills to assist their independence.



Re-thinking Spaces

Gordon Brown Centre

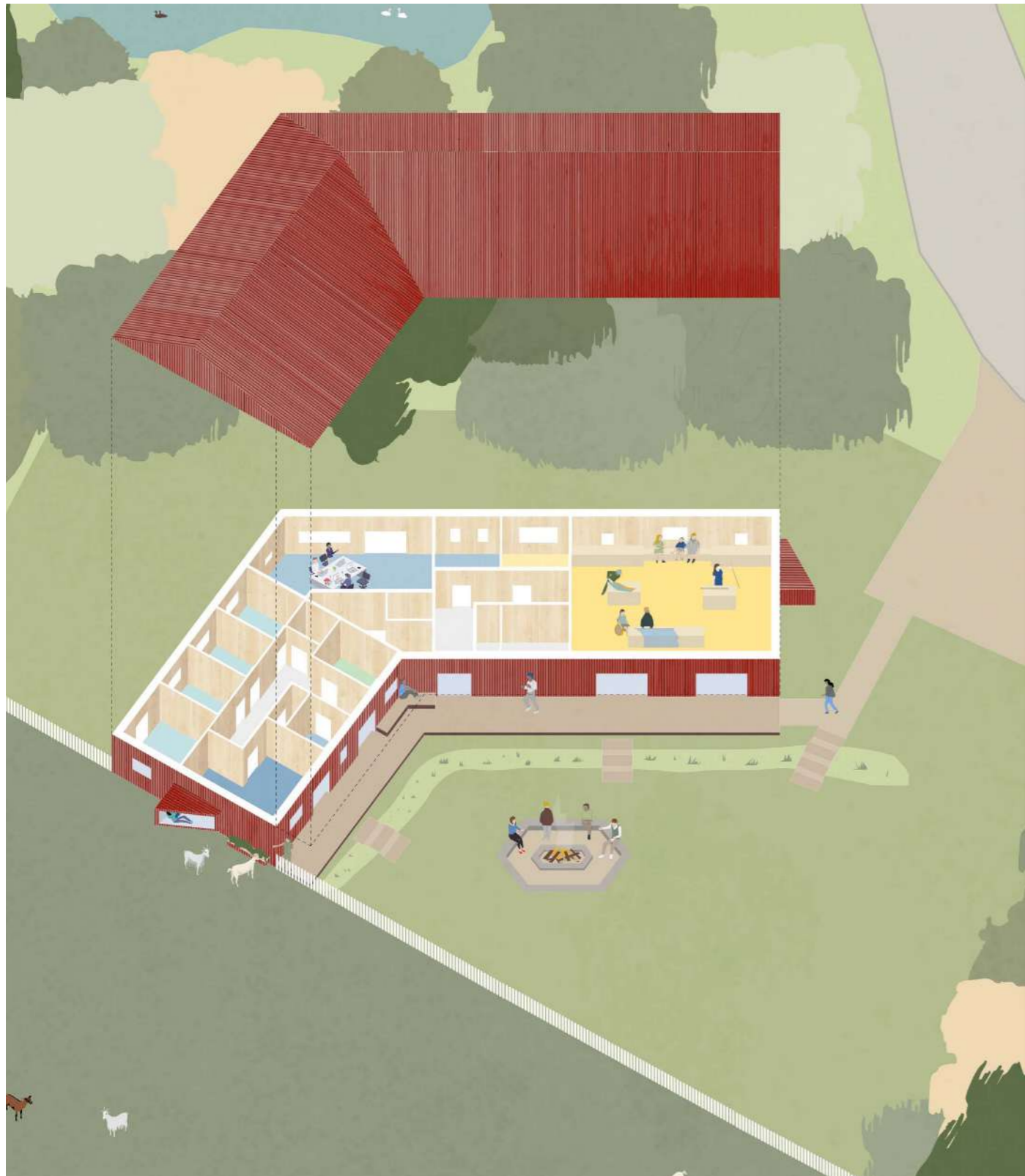




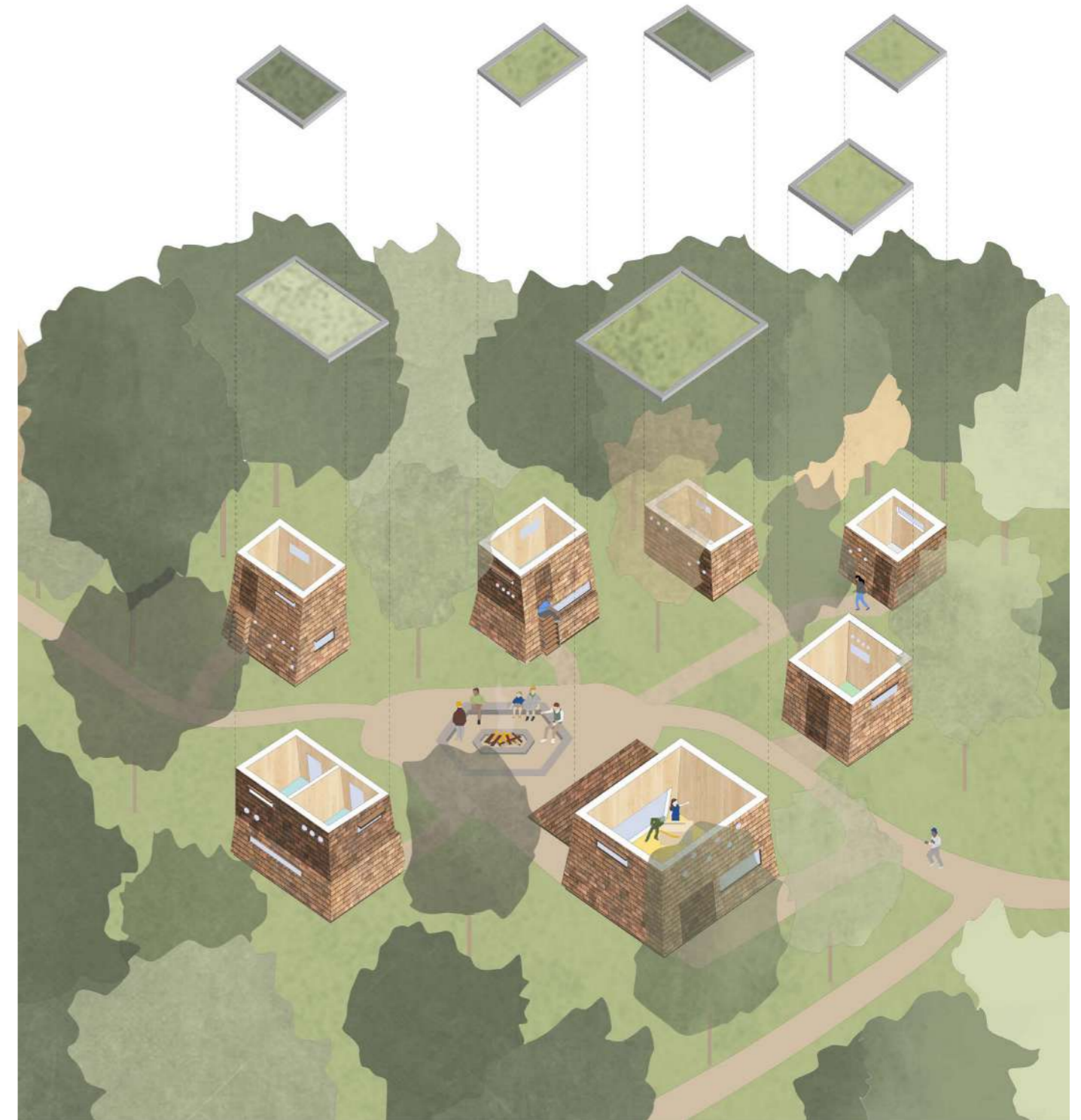
Aerial map showing site location and area for potential development

- Creating flexible teaching environments
- Interweaving outdoor and indoor spaces
- Connecting with nature
- Outdoor learning

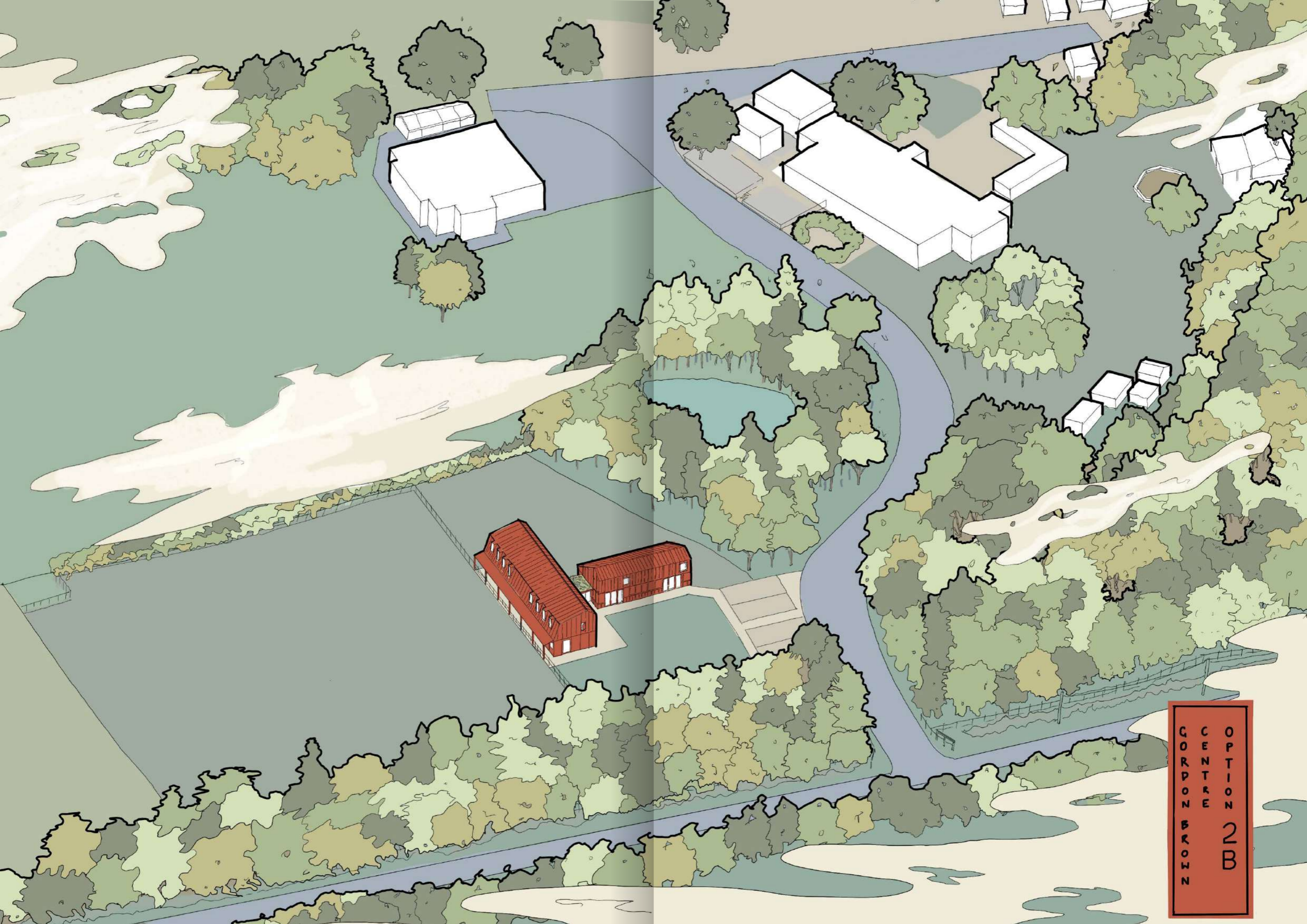
Developing Lifelong Skills



Design development study showing proposal at the edge of the farm area.



Various buildings housing different activities and function, spread out in the woodland area



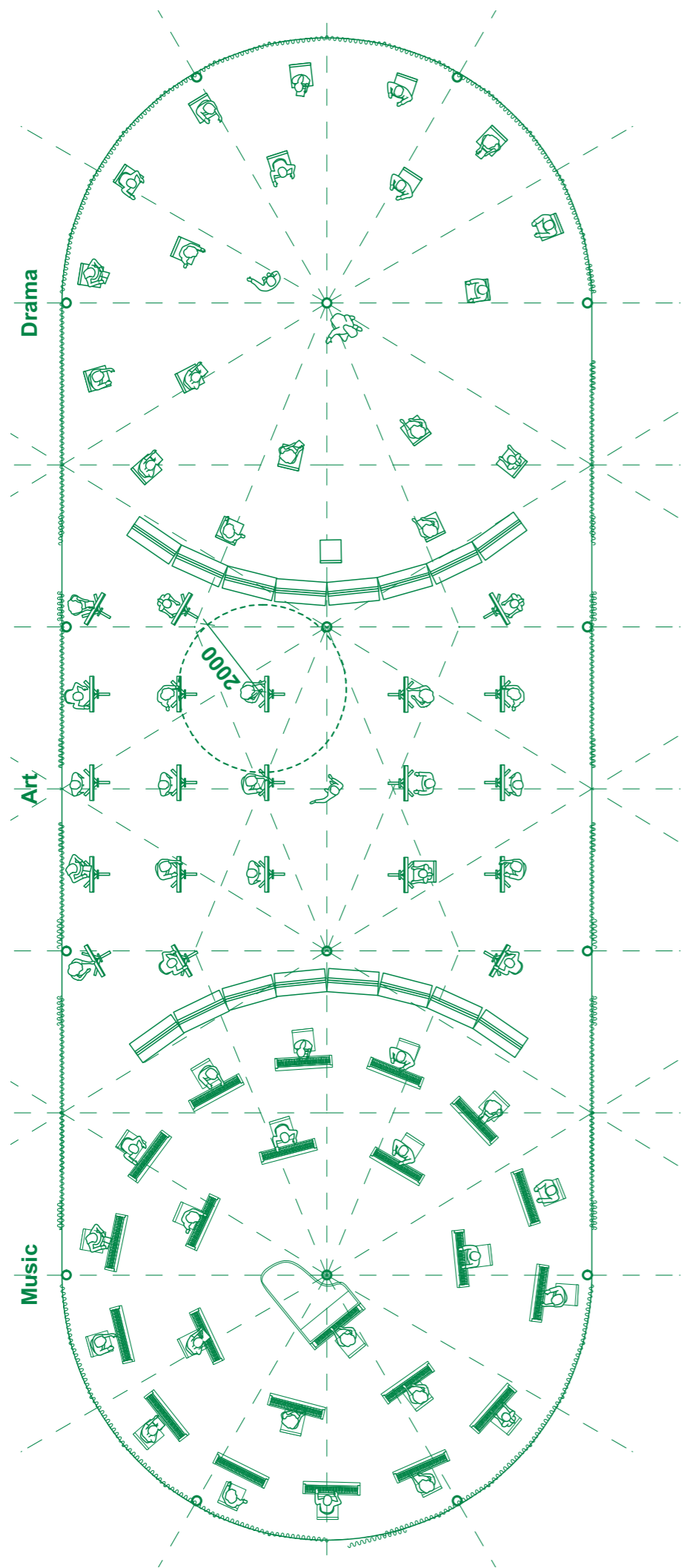
OPTION 2B
CENTRE
GORDON
AVENUE



Sectional idea showing flexibility of the building with various learning activity spaces and accommodation area.

Pop Up Schools





While the pandemic was causing disruptions to daily life, school activities and everywhere was shut down. We at CLTH sat down at the drawing table to discuss ideas and ways in which we could help mitigate restricted circulation within schools and civic buildings.

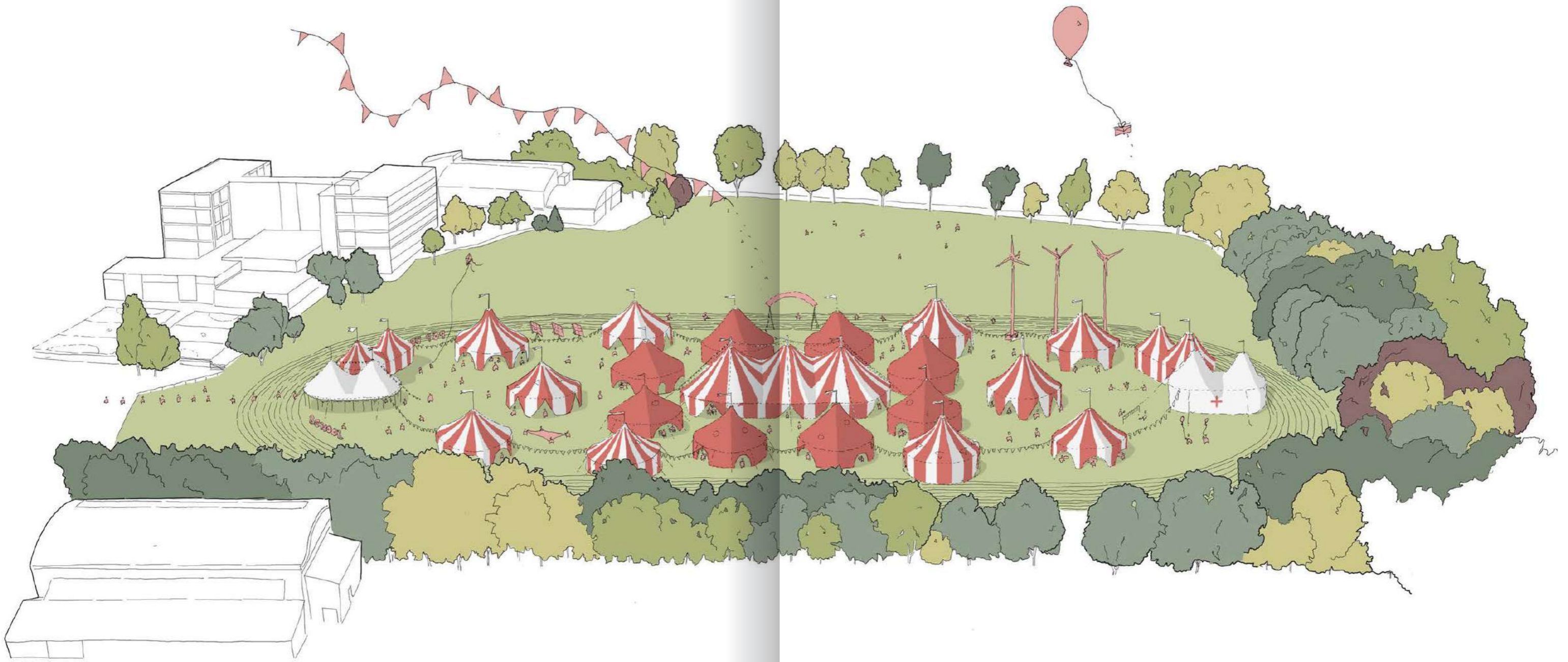
Pop Up Schools is an idea that aimed to address the challenges many schools in the UK and beyond faced when they re-opened. The design proposed a series of tent-like structures each of which was arranged to follow the two metre social distancing rules with the ability to host different classroom set-ups and activities. The idea tackles difficulties with social distancing among pupils while encouraging clockwise movement within and outside the schools in order to address the circulation issues.

The proposal made use of materials like marquees and portable bathrooms which were dormant during the period of pandemic. Where appropriate, provisions for renewable energy sources were provided on site in form of pv arrays which were used for heating hot water.

The idea is simple and adaptable and can be used for various outdoor settings from football pitches to pedestrianised areas and neighbourhood parks.

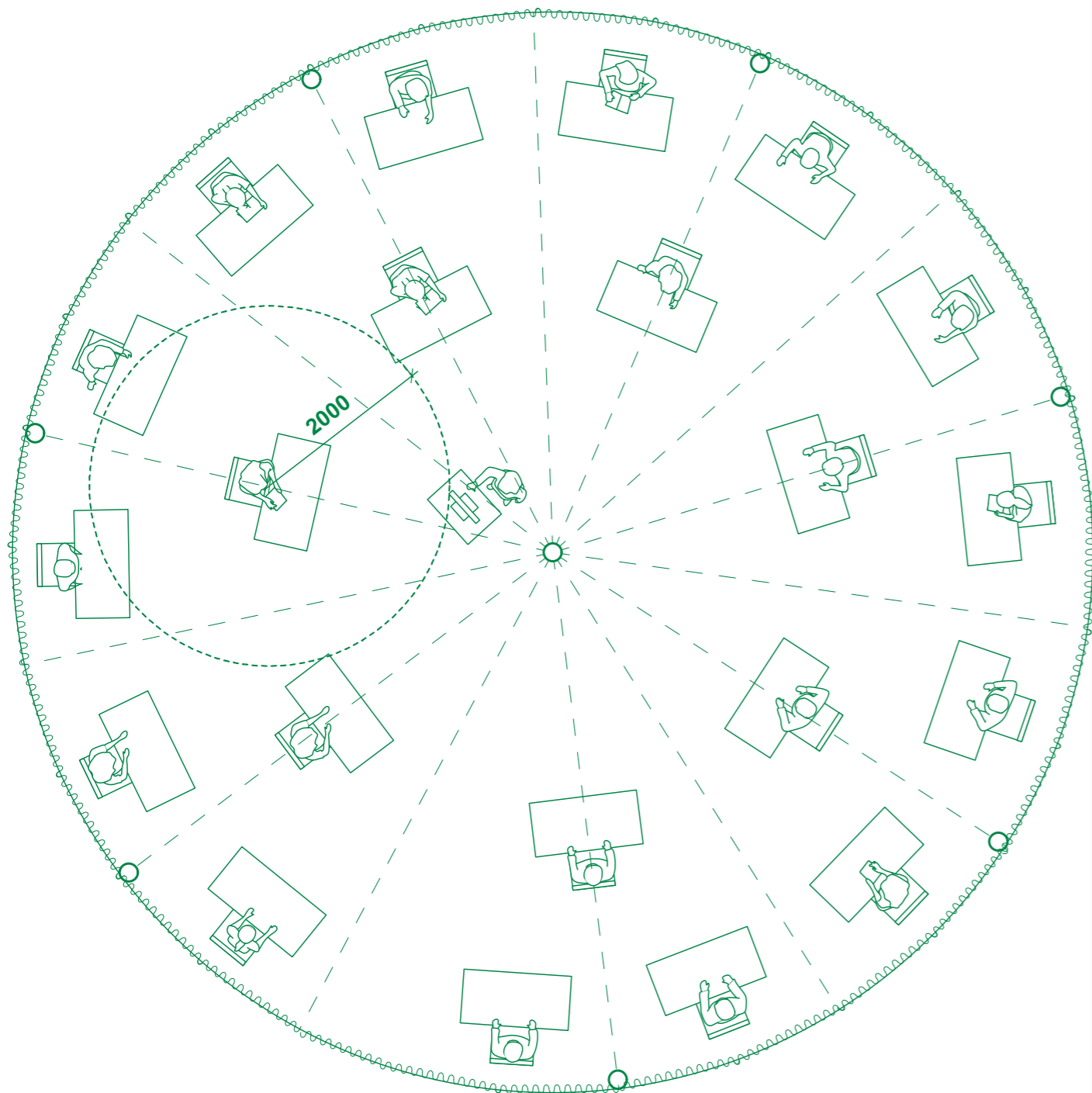
← Plans showing suggestions on how seating could be arranged within tents while compliant with lock-down regulations.

Demountable spaces

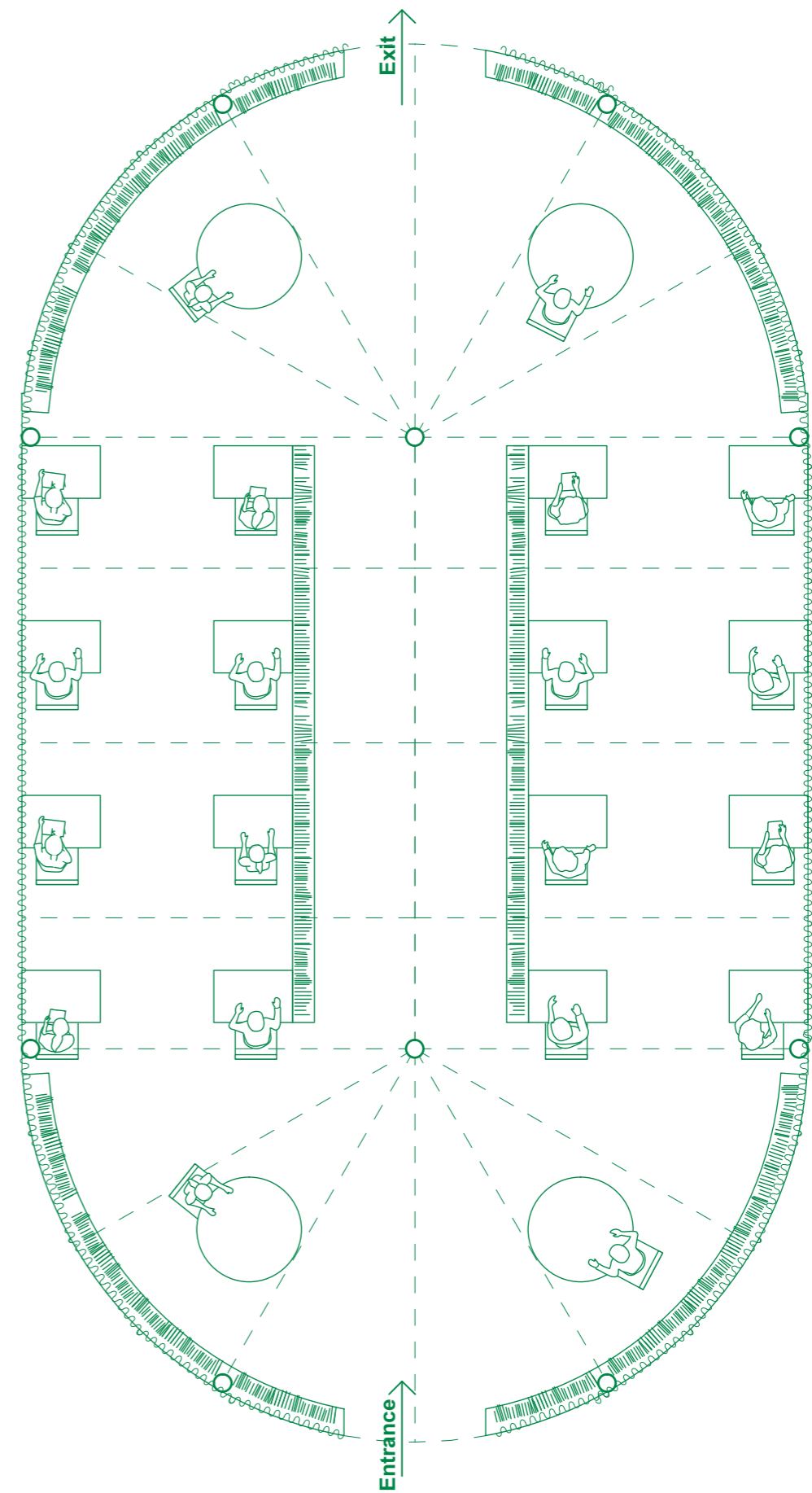


↑
Tent like structures setup in
field of schools.

Demountable spaces



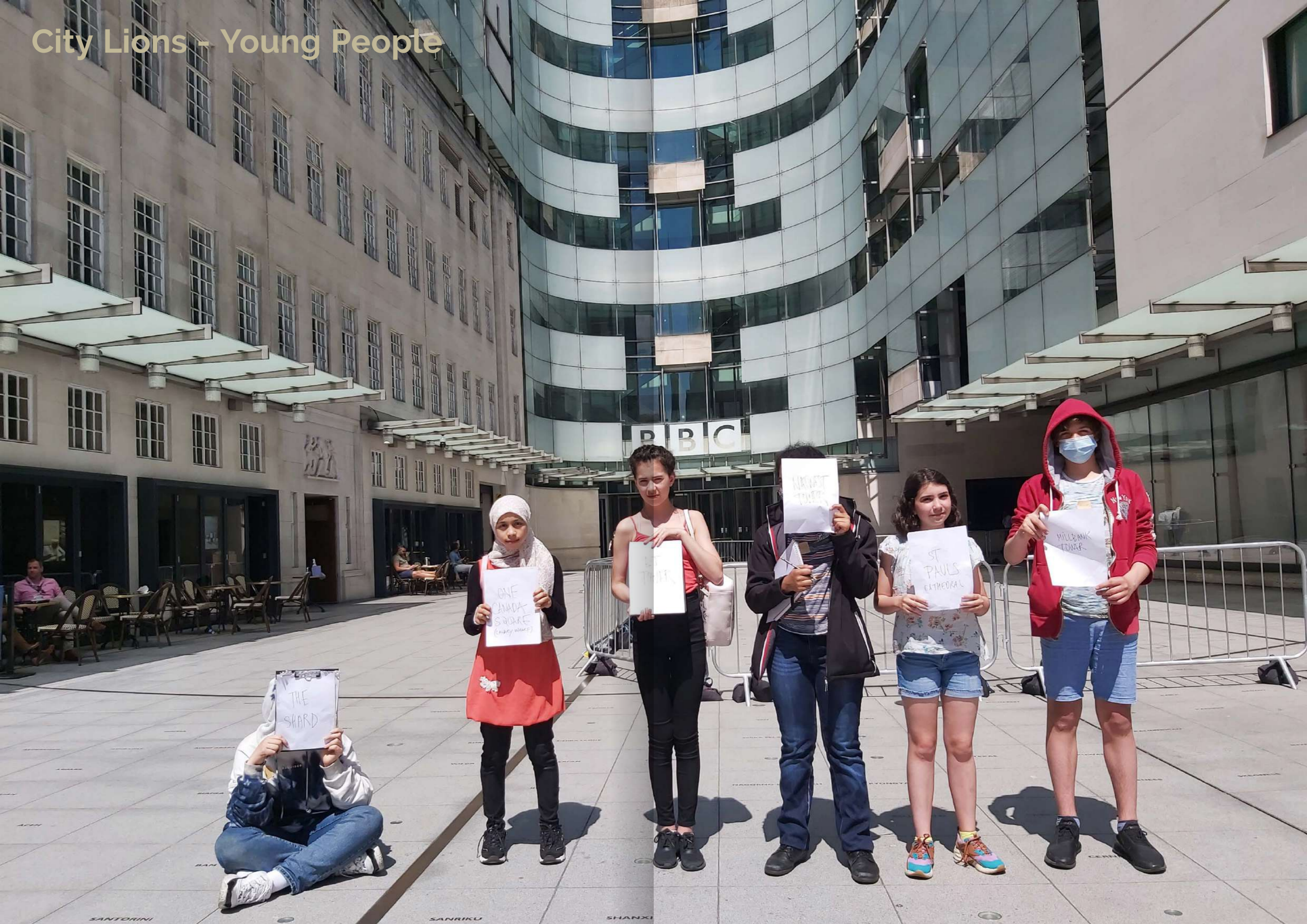
Plans showing suggestions on how seating could be arranged within tents while compliant with lock-down regulations.



Demountable spaces



City Lions - Young People



ONE
CANADA
SQUARE
(Kaspiy area)

THE
SHARD

MARKET
TRUST

ST
PAULS
CATHEDRAL

MILBANK
TOWER

SANTORINI

SANRIKU

SHANXI



In line with our core values and interest in making social impact, we initiated a collaborative work with the young people of City Lions a charity based in Westminster working with young people to transform their life through arts and therapy. We directly engaged with a particular group of people, within the age of 13-16 year old.

In an online evening talk we presented the practice's recent work which quickly led the young participants to ask questions about construction techniques, functionality, environment and architectural education. The evening was embellished with a quiz about our Revitalise Peckham Rye project and also some quick drawing exercises to gradually introduce the next step of the project.

This led to planned walks around Westminster, visits to the BBC and the Royal Institute of British Architects (RIBA) with students drawing, observing and identifying buildings on the walk



Equipping the future

Curl la Tourelle Head Architecture

Social Value

Podium Level
Shakespeare Tower
Barbican
London EC2Y 8DR
mail@clth.co.uk
+44 (0)20 7267 0055

Further practice studios at
Silver St, Deal
& The Paragon, Bath.

Latest News:
www.clth.co.uk/news

CLTH are signatories of the RIBA Inclusion Charter and are fully committed to making architecture more inclusive.

Winner: RIBA National Award 2024: Alfreton Park Community School

Winner: RIBA East Midlands Building of the Year: Alfreton Park Community School

Winner: Civic Trust Awards 2024: Alfreton Park Community School

Finalist: Building Awards 2024 - Delivering Social Value

Finalist: London Construction Awards 2024 - Excellence in Community Engagement: Your Bruce Grove

Winner: RIBA East Midlands Project Architect of the Year 2024

Winner: RIBA East Midlands Client of the Year 2024

Winner: RIBA East Midlands Award 2024

Winner: Civic Trust Awards 2024, Special Education Award: Alfreton Park Community School

Winner: AJ Architecture Awards 2023, Education: Alfreton Park Community School

Shortlisted: Building Awards 2024, Delivering Social Value: Alfreton Park Community School

Shortlisted: Education Estates Awards 2024, Inspiring Learning Spaces: Alfreton Park Community School

Shortlisted: Education Estates Awards 2024, Project of the Year Inclusive Design: Alfreton Park Community School

Shortlisted: Education Estates Awards 2024, Project of the Year School: Alfreton Park Community School

Shortlisted: Building Design Social Value Architect of the Year 2023

Longlisted: MacEwen Awards 2024, Architecture for the common Good: Hornsey Library

Shortlisted: Selwyn Goldsmith Awards 2024 for Universal Design: Alfreton Park Community School

Shortlisted: RIBA London Awards 2023: Hornsey Library

Winner: Inspire Future Generations Award 2022, Diversity in Action: Newham Virtual School

Winner: Haringey Design Awards 2021, Better Building Standards: Hornsey Library

Finalist: Architect of the Year Awards 2021: Public Building Architect of the Year