

Curl la Tourelle Head Architecture



Selected Projects

Empathise and engage

If there's one thing we've learned makes better buildings, it's empathy. Architecture never happens in isolation and simply by being interested and engaged, we've found it's possible to open up the conversations that connect a scheme to its clients and community.

We ♥ constraints

We believe that the more constraints there are, the better the architecture. If there aren't any constraints, we create them. Challenging sites, existing buildings and complex briefs almost always present incredible opportunities for great design.

Social detail

If a site's constraints guide the bigger design decisions, then it's empathy that informs the smaller, social details. These details frame the human narratives that aren't included in the brief, anticipating specific moments in the users' lives.

Passive future

To limit our environmental impact, we start with what is already there. By manipulating the form and fabric of a building—whether new or existing—we can work with the existing conditions of topography, light and orientation, and harness the natural energy sources offered by air, ground and water.

Mud on our boots

Good architecture is as much about what happens on the building site as it is about what's on the drawing board. By working alongside contractors as well as clients we can ring-fence the ideas and details that matter, championing the quality of the building throughout its construction.

Curl la Tourelle Head



Contents

Education

All through SEND School - **Alferton Community Park School, Derbyshire**

AJ Architecture UK School of the Year 2023

Ecologically Sustainable - **Freshwater Biological Association, Lake Windemere**

Providing for Pupils - **Kidbrooke Park School, Greenwich**

Housing

Regenerating Alway - **Newport City Homes, South Wales**

Back to Front - **Social Housing in Sutton**

Domesticity Alive - **Teviot Avenue Social Housing, Essex**

Conservation

Off Grid Learning- **Revitalising Peckham Rye, Listed Parklands**

Live Music at the Seaside - **Kings Hall, Hernes Bay, Locally Listed**

Heritage Hub- **Ramsgate Royal Harbour and Clockhouse, Grade II***

Public Wellbeing and Tidal Pool - **Walpole Bay, Margate, Grade II**

Celebrating History - **St Michael's Church, Grade II***

Accessing History - **Whitehall Museum, Sutton, Grade II***

Alfreton Park Community School

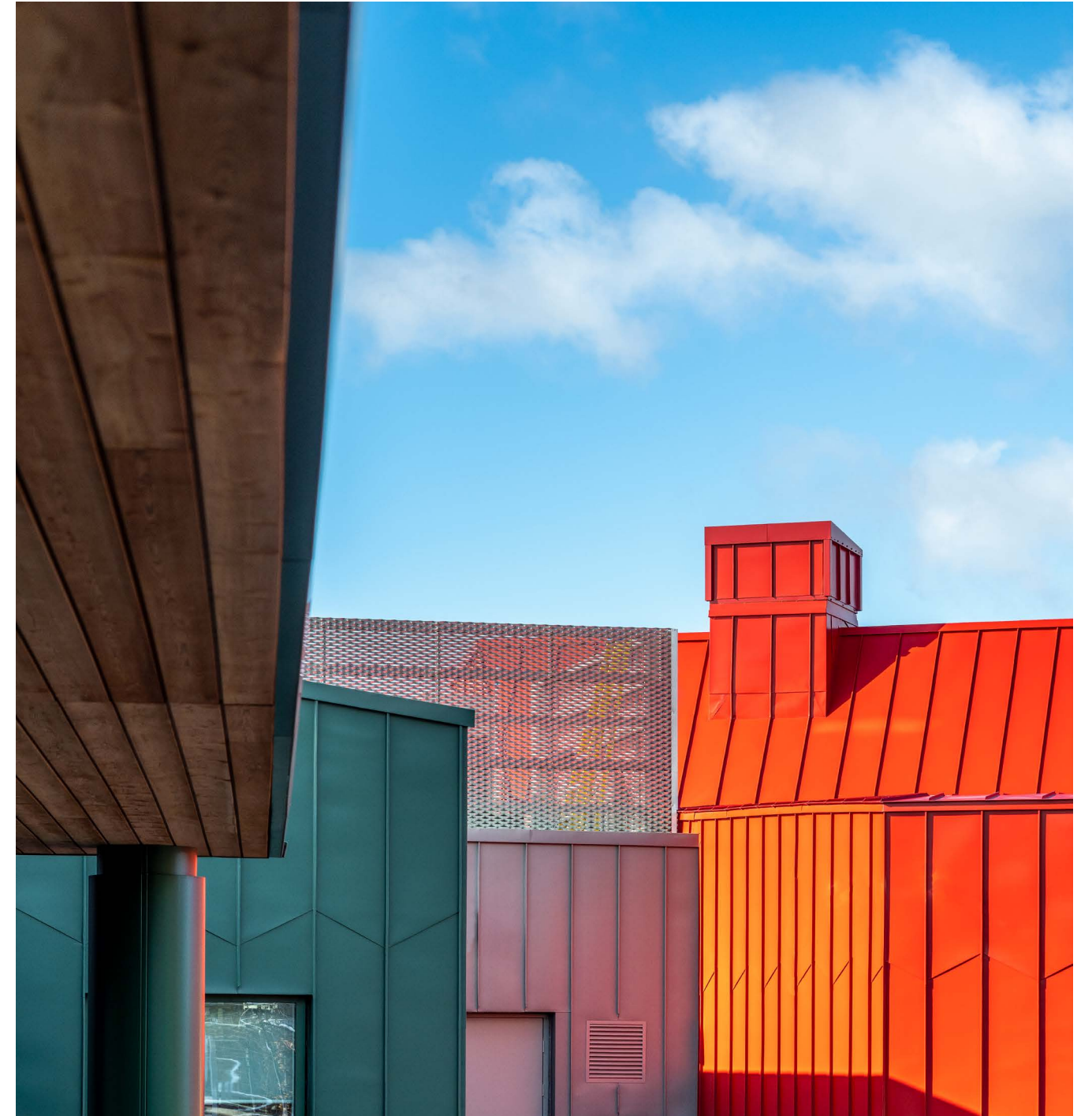
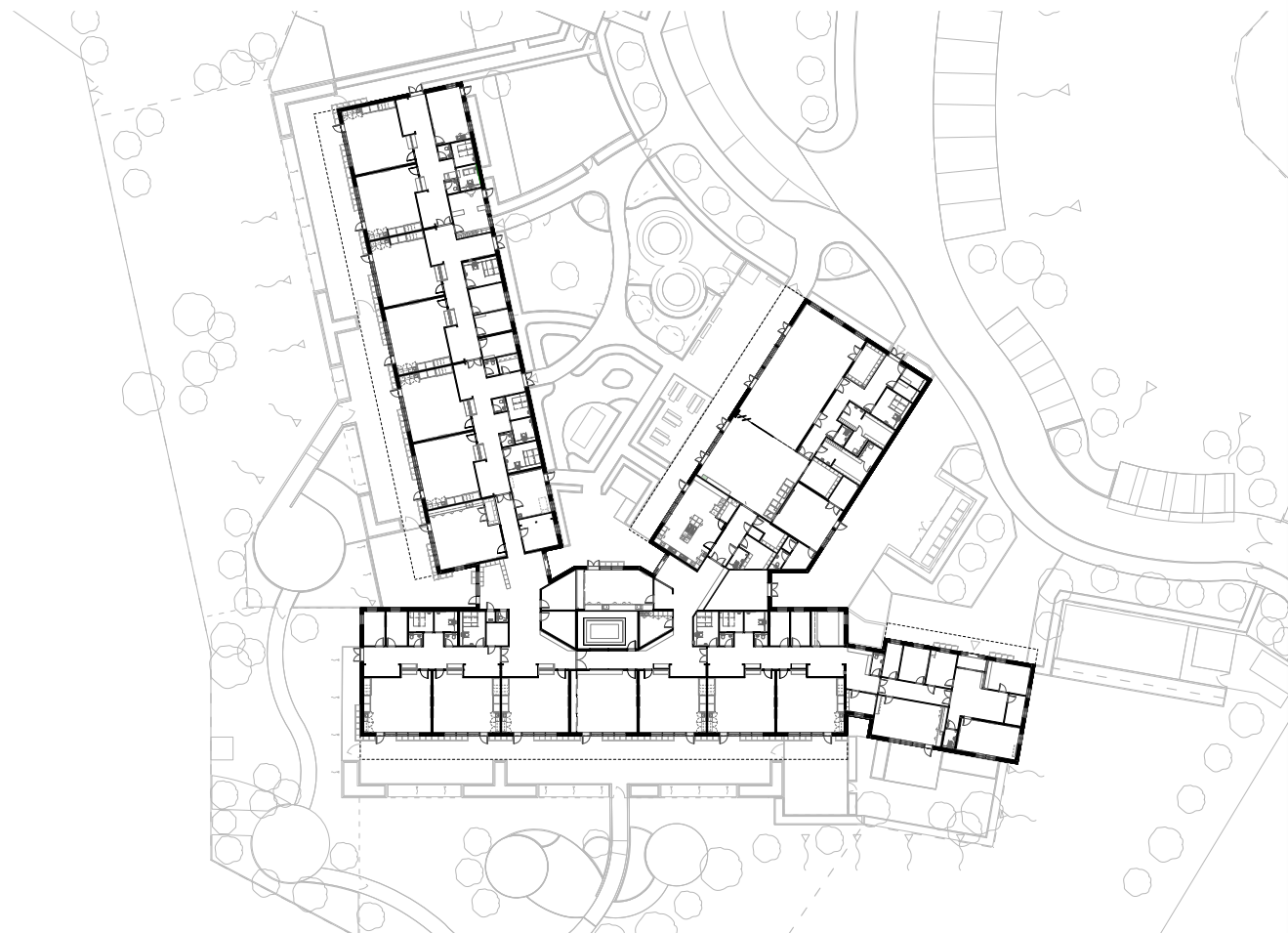
AJ Architecture UK School of the Year 2023





↓ The school forms a campus like family of nurturing buildings within a park setting

→ Following the advice of Frank Lloyd Wright, the school is positioned on the brow of the hill, rather than its crest, creating a school "of the hill", not on it



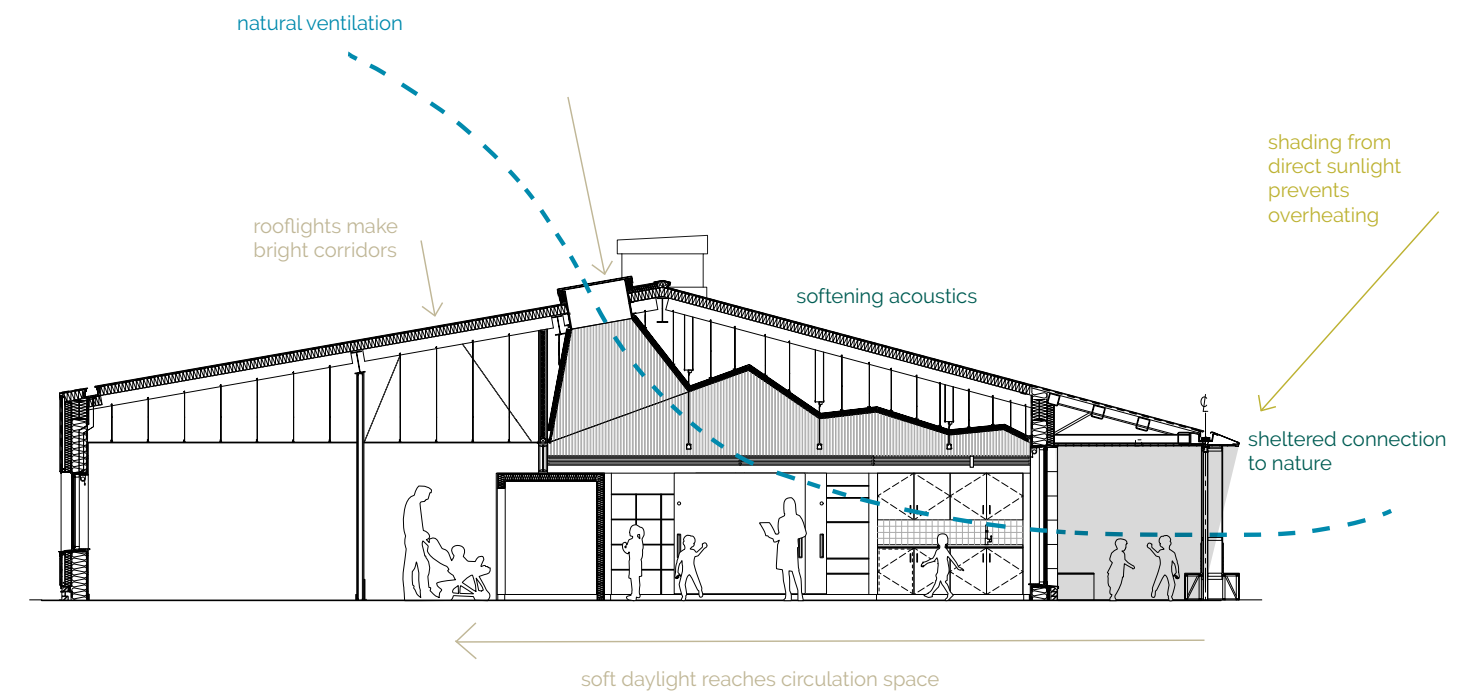
Secure, welcoming and inclusive learning environments

Light filled classrooms

Visibility and surveillance between classrooms and circulation

Sociable circulation

All through SEND School



small group room circulation mobility store classroom outdoor learning

↑
A simple and efficient single storey roof section is used throughout, a generator for elegance in its setting, creating open and light internal spaces for activities

←
The trampoline room for rebound therapy that sits at the heart of the school







'We have had a reduction in behaviour incidents, we see an improvement in communication from the pupils and generally ... pupils are happier,'

Josie O'Donnell, Headteacher Alferton



Winner AJ Awards 2023 - School Project



Winner of Civic Trust Special Award for Education



Winner of Civic Trust Awards 2024



Nominated for the ArchDaily Building of the Year 2024



Shortlisted for the RIBA East Midlands Awards 2024



Graphisoft UK Awards Runner up in the Public Sector Project of the Year



Generous circulation space allows movement of pupils using a wide range of mobility equipment - go scoot!



The powerful link between architecture and its users has been noticed by the headteacher, who stated 'it is in the smiles of the children and staff alike'.



All through SEND School

Freshwater Biological Association





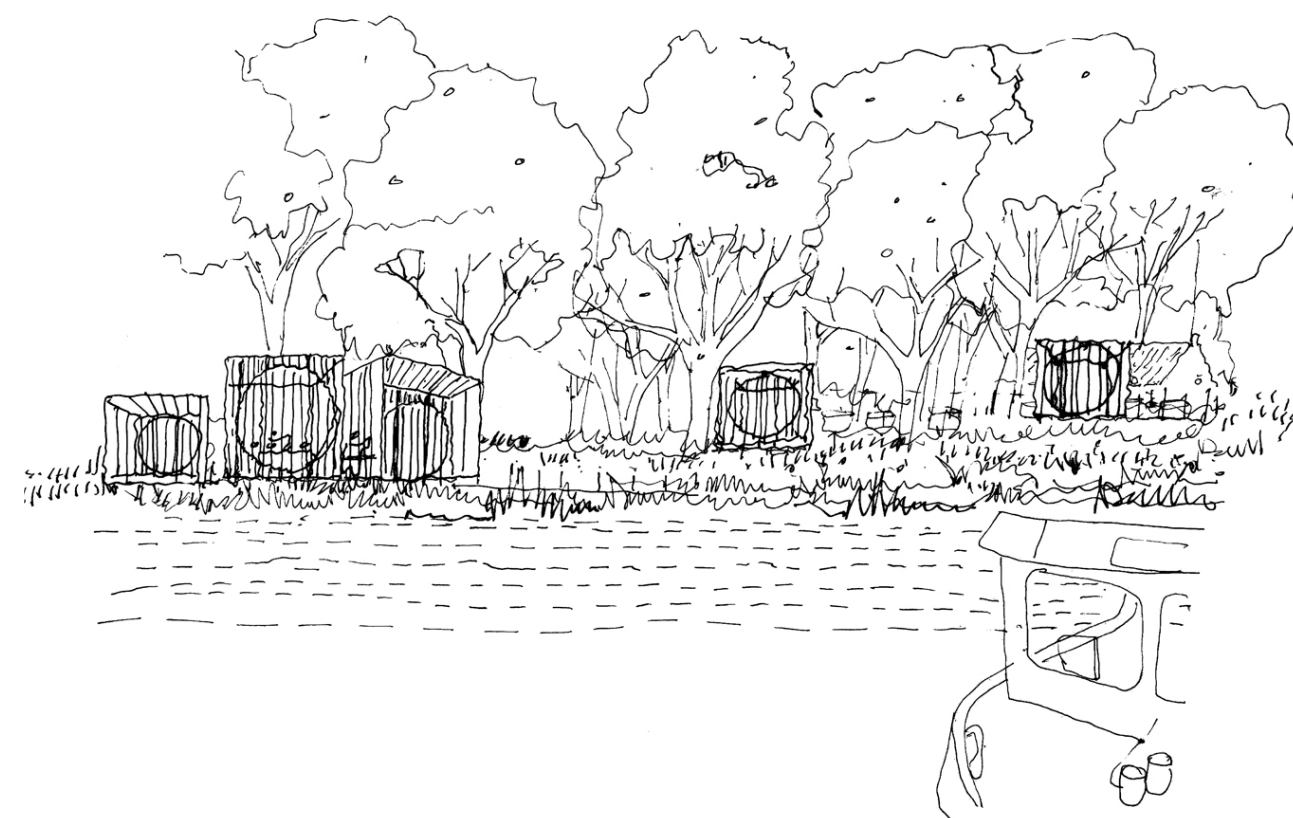
"We have been working with the team at CLTH for several months on an ambitious feasibility study. From the get-go I have found CLTH to be really focused on understanding our organisational ambitions and then turning that into an inspiring architectural vision.

At the same time their hands-on, grounded and practical approaches have ensured we keep our feet on the ground regarding technical, planning and cost considerations! I very much view CLTH as an essential part of our programme team and would have no hesitation in recommending them."

Simon Johnson
Executive Director, Freshwater Biological Association

The design will feature bio-secure facilities, teaching labs and equipment storage, alongside sustainable sanitation, and water management solutions. We intend to install vertical flow wetlands to filter wastewater and achieve Net-Zero in construction and operational energy.

Early sketch design of the proposal nestled into the canopy of the National Park.



Ecological Sustainability



➤ A proposed masterplan of the Freshwater Biological Association's new premises. The facilities will include bio-secure facilities, teaching labs and equipment storage.

➤ Working closely with the FBA scientific team to create a new sanctuary for the mussels to facilitate their reintroduction into the wild.



Habitat restoration and water quality improvements

Sensitive design in the Lake District National Park

Sustainable sanitation and water management solutions

Protecting endangered freshwater species

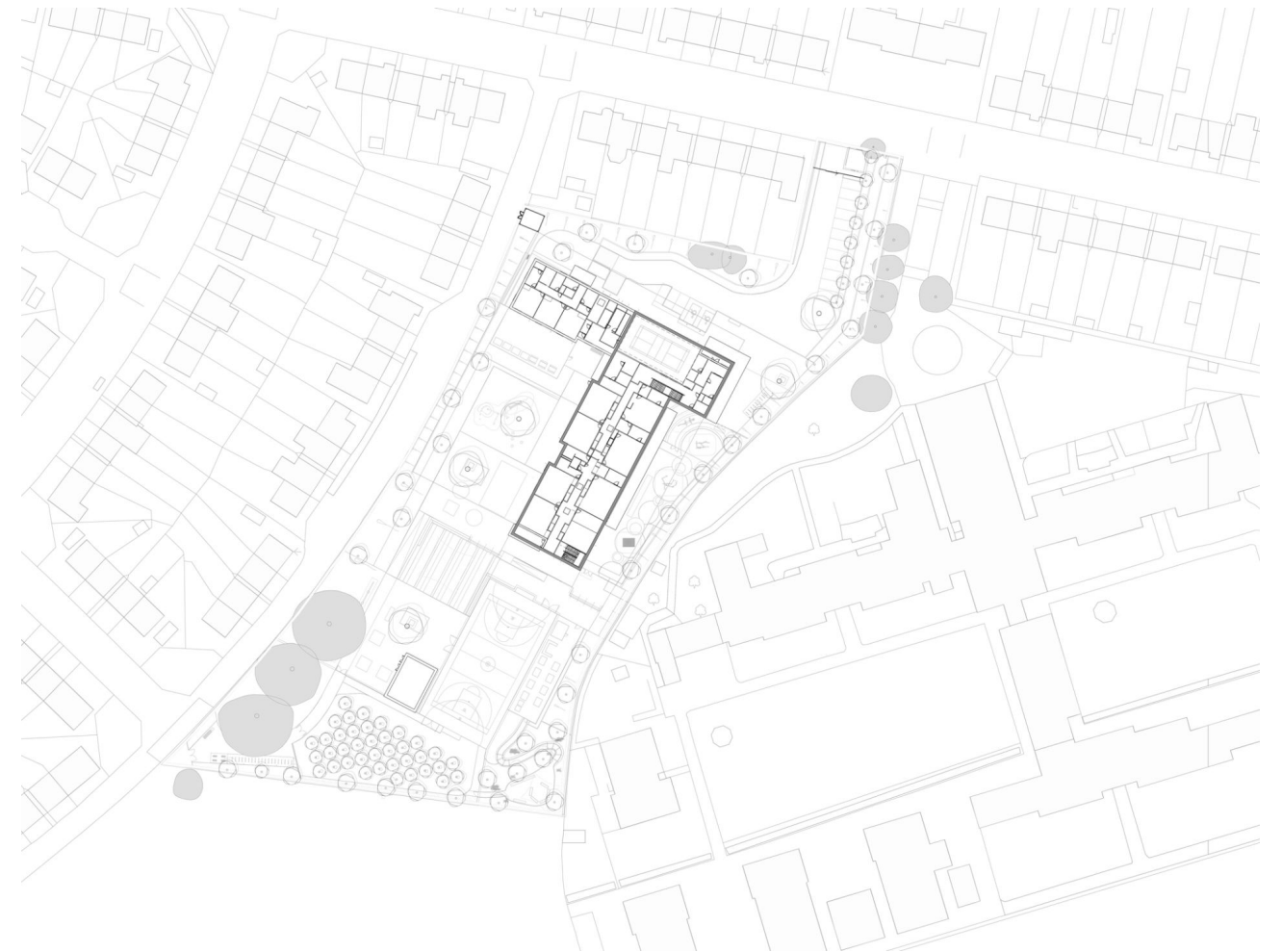
Ecological Sustainability

Kidbrooke Park School



← Staff pictured outside the new primary school building

↗ Photograph of the school and outdoor play area



↑ The building sits on a formerly overgrown field site, with the proposal refreshing the landscape, a t-shape block sits to the north with a MUGA facility, habitat forest and orchard to the south

Providing extensive community facilities

Maximising passive techniques

High quality, sustainable educational facilities for everyday use

Learning for different age groups

Providing for pupils and the wider community

Kidbrooke Park School



Providing for pupils and the wider community

Newport Social Housing





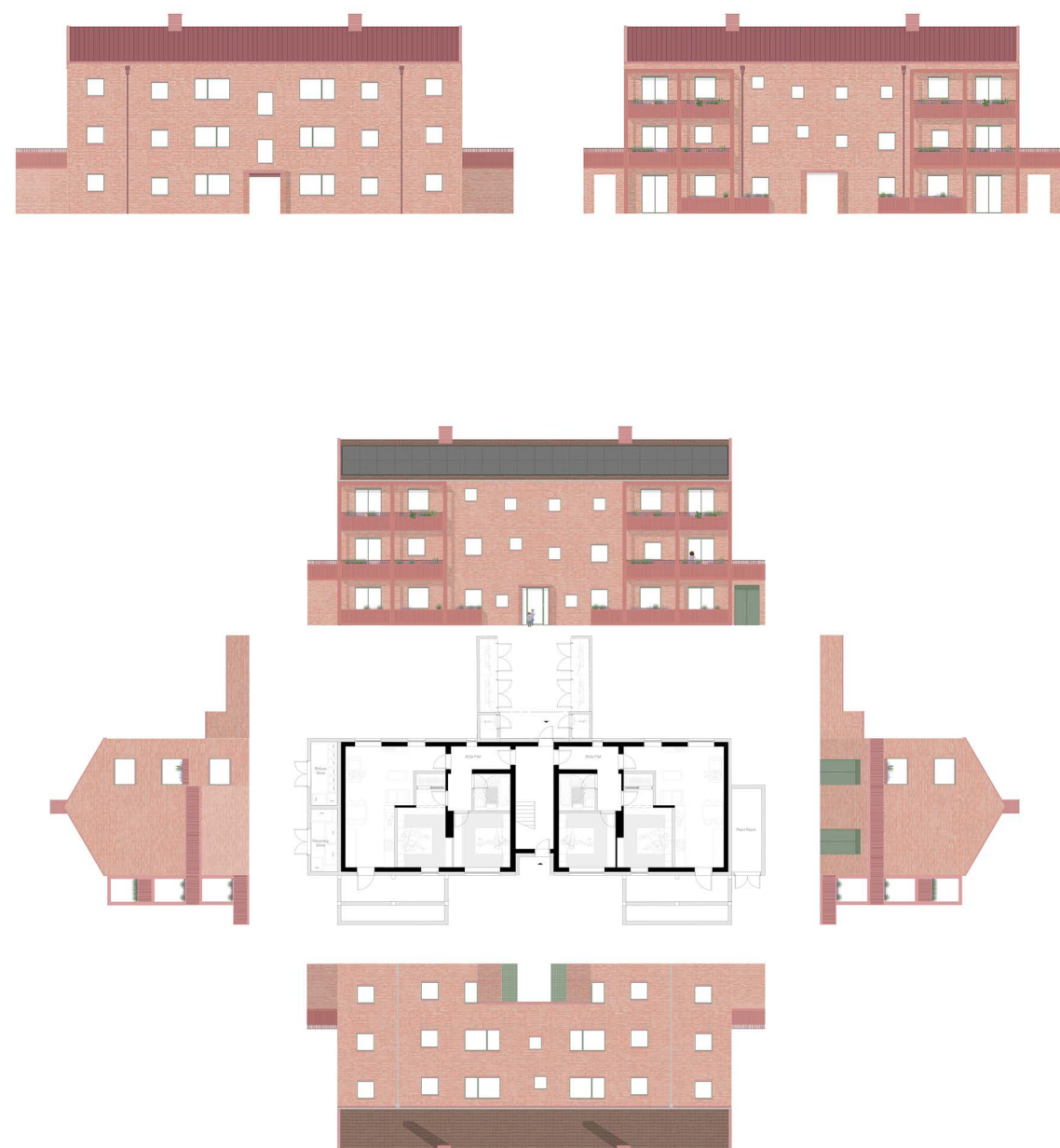
Diagrammatic axonometrics
with sustainability ideas



Aberthaw road long elevation



Regenerating Alway



↑
Inhabited plans

←
Retrofit block type for Easi form
Block A Aberthaw road Ground
floor plan with proposed
changes to elevations and
plans

Realising the sites potential

Review existing easi-form housing stock

Retrofit,Rebuild, Re-imagine

Improving Always' housing stock

Regenerating Alway



Elevation Study showing recessed entrance



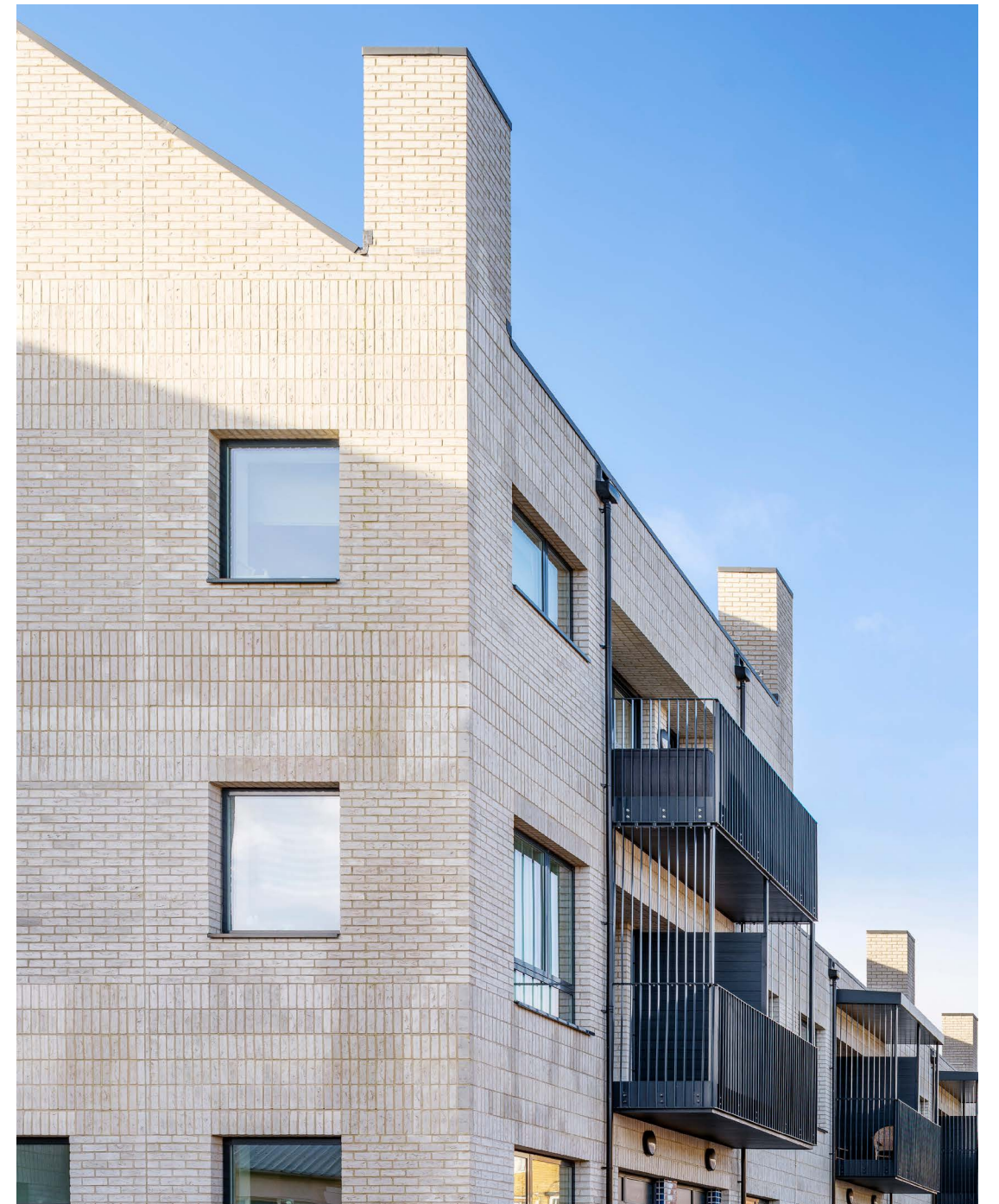
Artistic Impression of Aberthaw road looking west across the proposal

Sutton Social Housing





↑ Early sections exploring the contextual conditions of specific sites. Some were small and only offered the opportunity to construct a couple of new homes; others had space for larger-scale housing with multiple units.



Front to Back



The site had a tough urban setting behind some garages, so we gave the homes walled gardens to offer sanctuary and safety



This environmental section shows our early intent to build with a cross-laminated timber (CLT) frame, giving a natural, almost Scandinavian, quality to the inside spaces. The distinctive chimneys respond to the suburban location and also assist with the passive ventilation of the homes.

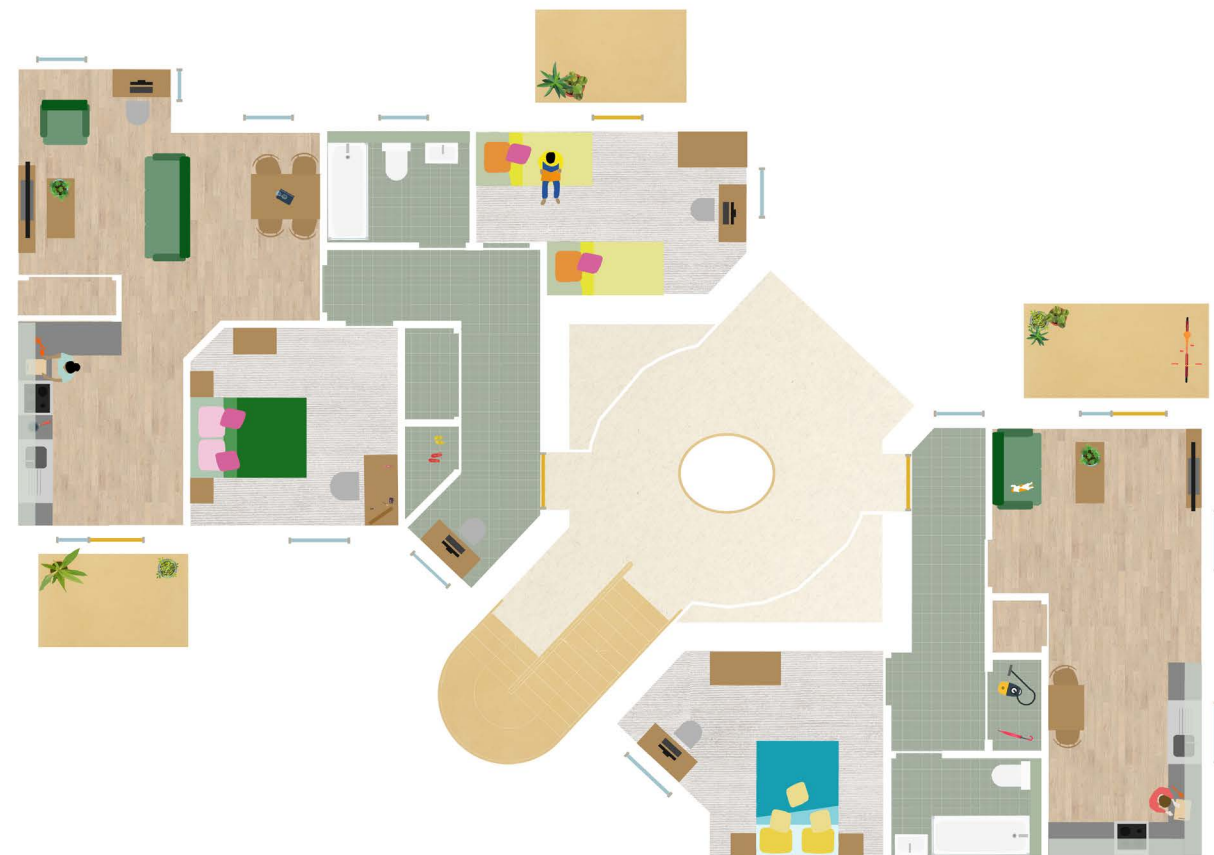


Front to Back



Teviot Avenue Social Housing





- ➔ View from the apartment stairs of the shared communal garden space
- ↙ First floor apartment plan, showing a 1B2P AND 2B4P home
- ↓ 1:100 model looking at the relationship of the shared yard space, gardens and apartment to houses





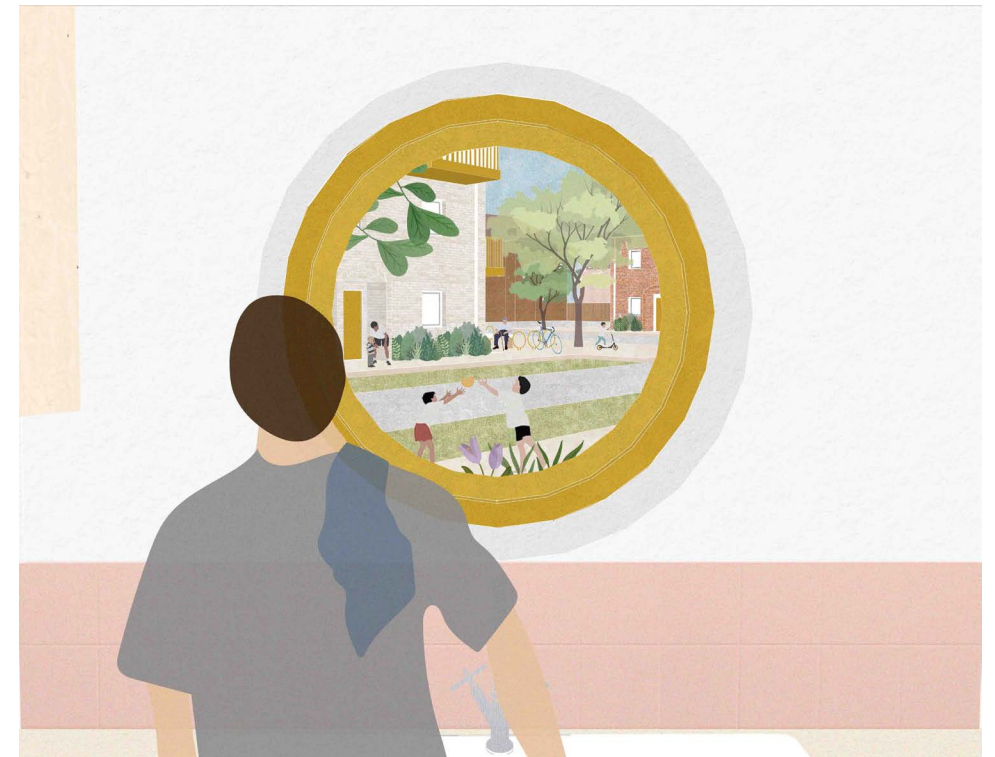
View along the new street



Looking out over the round window above the sink, framing a view of the social corner



View from the loft bedroom, looking at the tree line of the neighbouring golf course





←
Aerial View of the Site,
showing the mixture of
housing and apartments,
responding to local
requirements

↗
1:100 model of
apartment block

↓
Site Sections, showing the
elevation onto Teviot Avenue,
and the new street being
created through the scheme



Revitalize Peckham Rye





Sensitively arranged around a mature horse chestnut tree, the new-build Peckham Rye Pavilion blends gently into the historic tree-line, looking onto the Park's open playing fields to the south and providing easy access to its facilities.



The pavilion utilises natural light and ventilation where possible, with the tall spaces, skylights and large windows designed to take the best advantage of this.

"The new pavilion in Peckham Rye Park looks fantastic within the landscape. The shape and lines it makes are wonderful close up but when viewed from further away do not detract from the views of the park it sits in."

Will Walpole, *Environment and Social Regeneration Manager, LB Southwark*



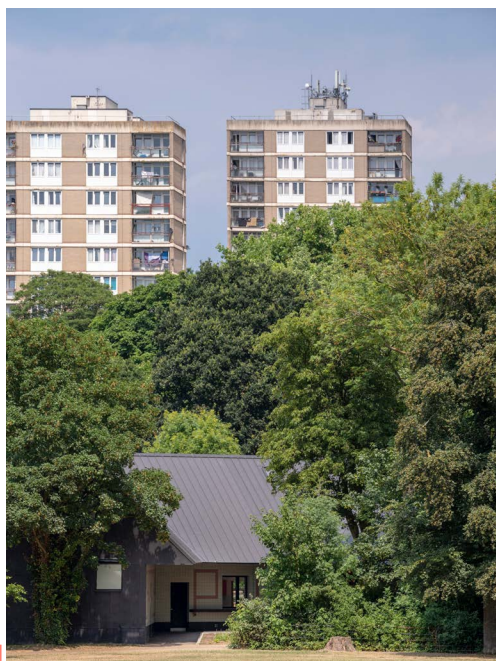
Improving public facilities around the parkland area

Structural CLT and finishes

Light and airy spaces

Easy access and visibility

Off grid learning



↑
←
→

The design references London's picturesque Victorian park pavilions and features colourful and playful decor inside and out.

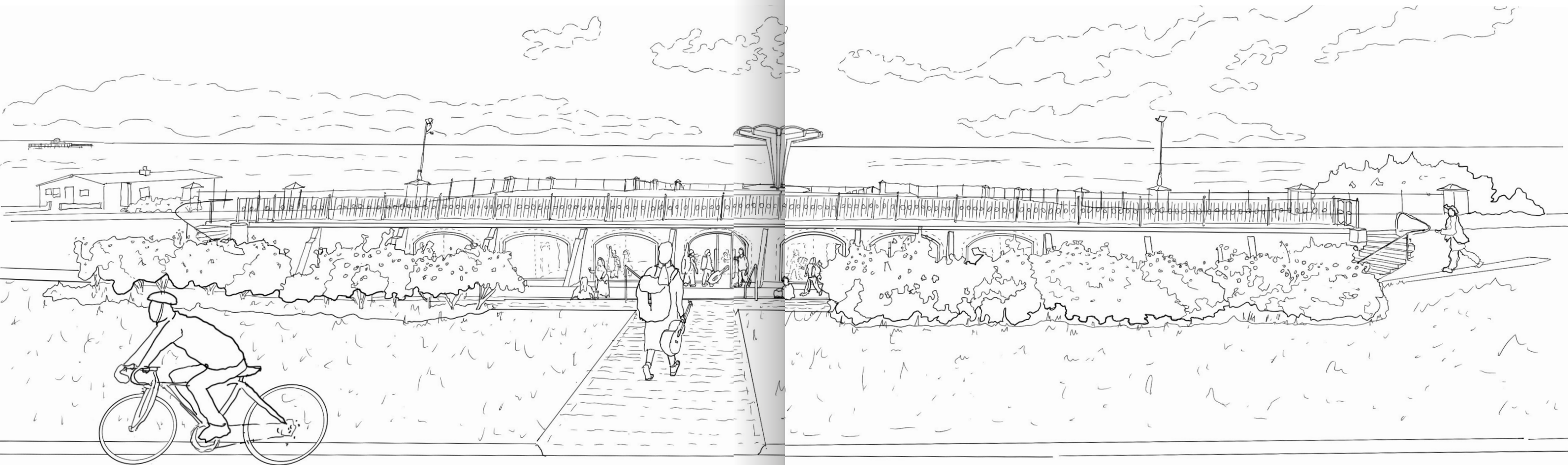
→

The natural timber not only applies to the internal finishes. The building is constructed of cross-laminated timber, while the juxtaposition of traditional wood and modern finishes to create a bright space, that is appropriate for children playing while remaining durable.



Herne Bay, Kings Hall





↑ Sketch approaching the active, public space.

Conserving an art deco landmark

Enlivening the seafront with live music

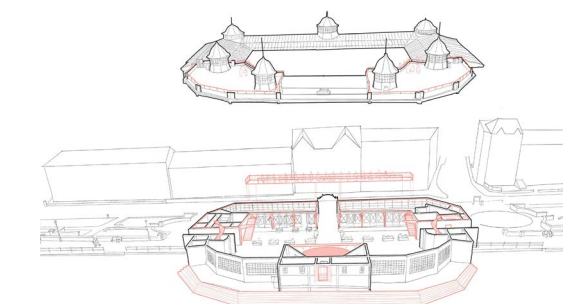
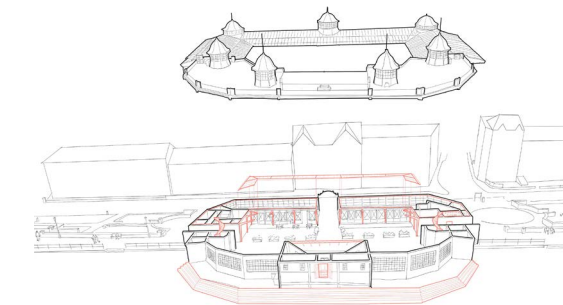
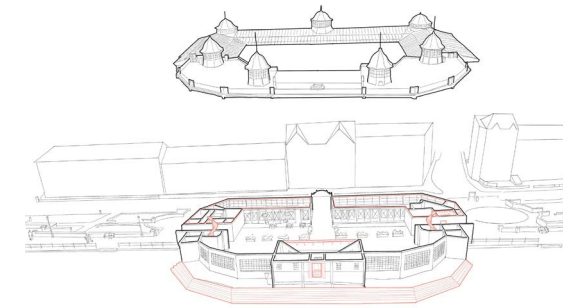
Creating a public destination for the community

Coastal friendly planting and sheltered seating

Live Music at the Seaside

→ Sketches showing the development of the Band Stand

↓ Artistic impression of Herne Bay, Bandstand



The Clock House, Ramsgate





Plan of Ramsgate Royal Harbour



Initial Sketch of the Grade II* Listed Clock House



Testing materials on the clockhouse elevation



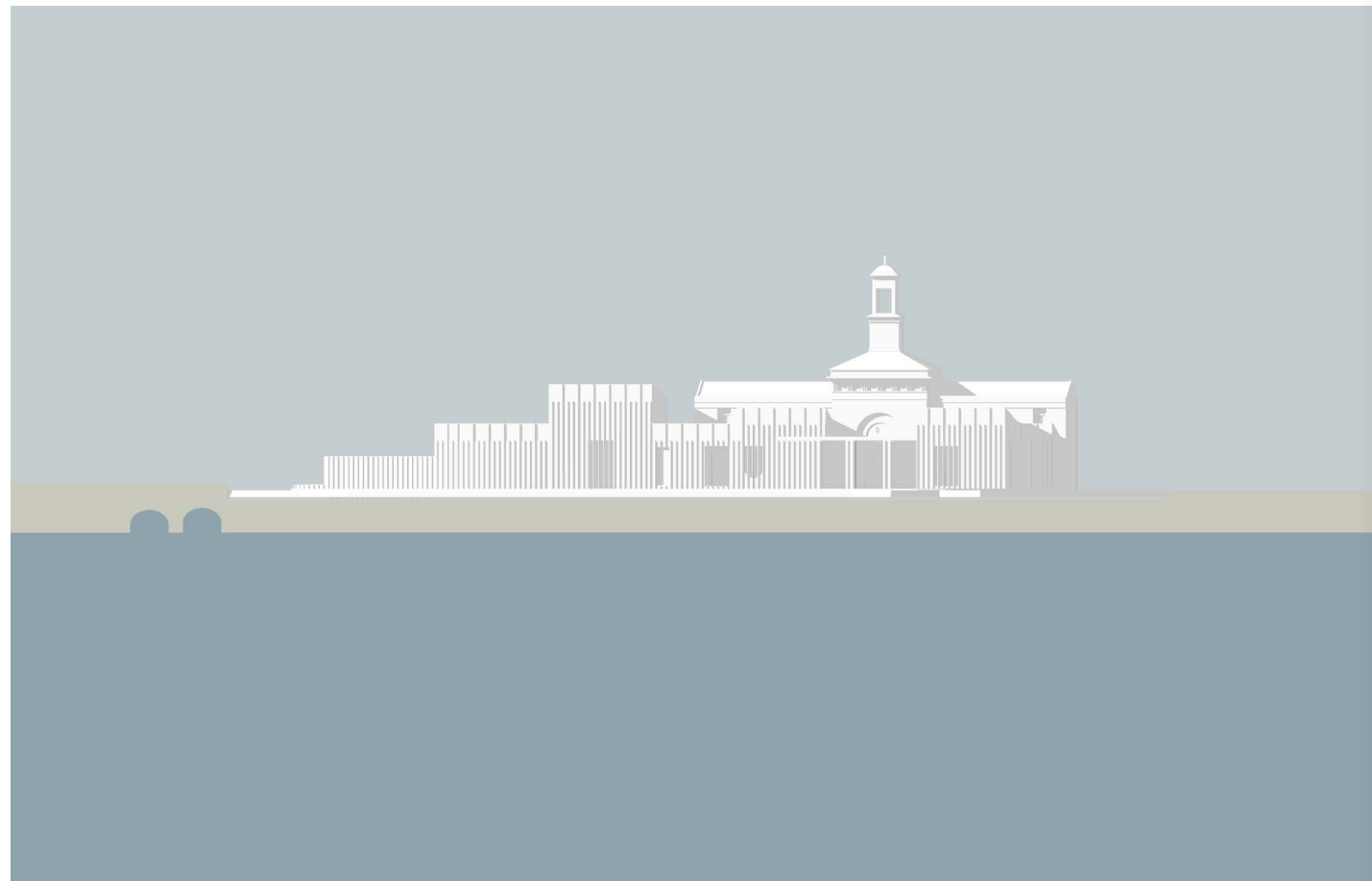
A future Heritage Hub for community storytelling and learning

Repairing the historic fabric

Broadening and diversifying participation in local history

Reusing existing structures to reduce carbon emissions

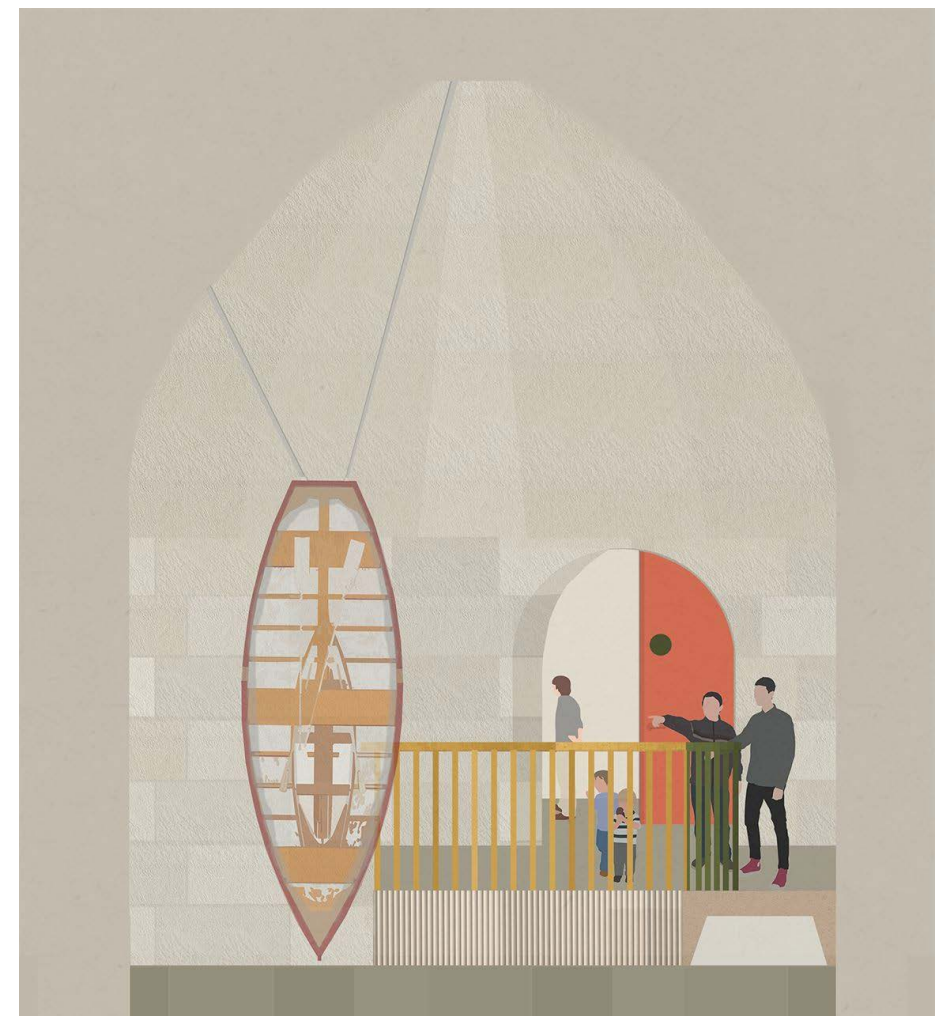
Heritage Hub



Developing initial elevation studies



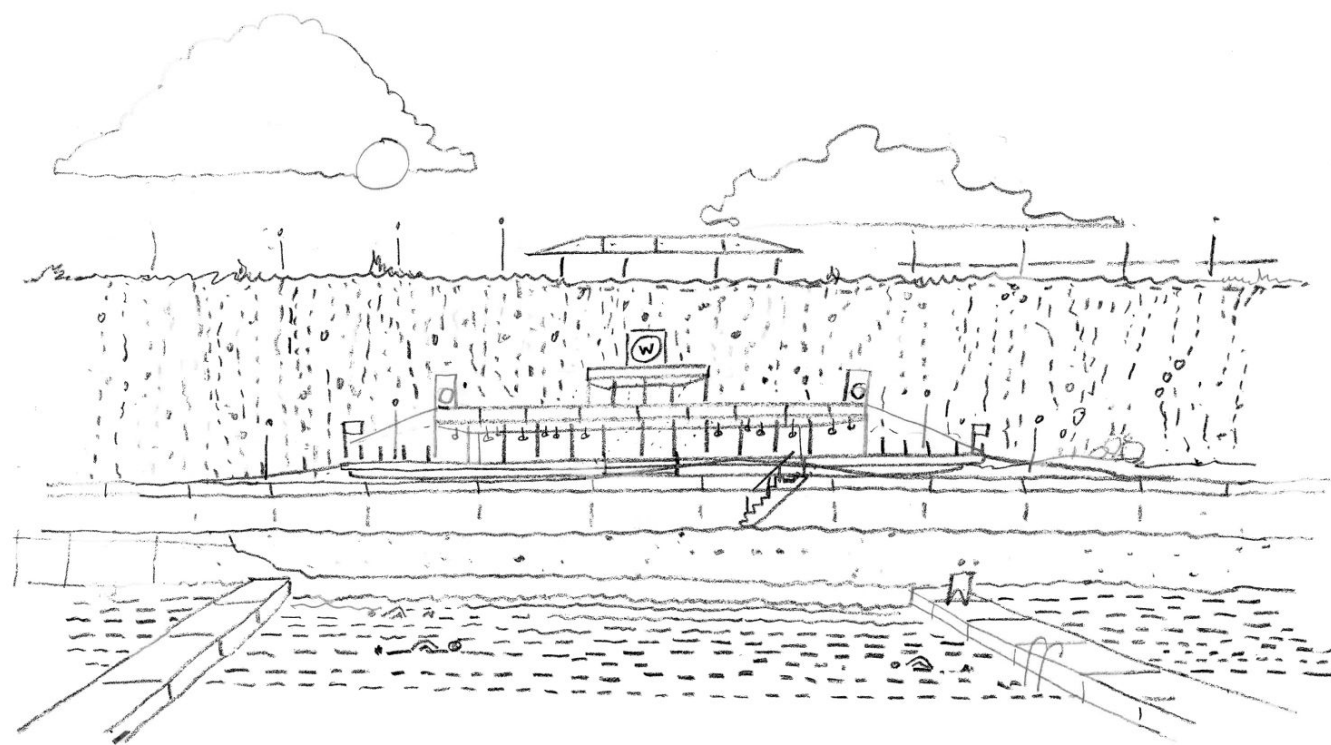
Potential use of the Octagonal room and the Entrance room in the Grade II* Listed Clock House





Walpole Bay, Margate



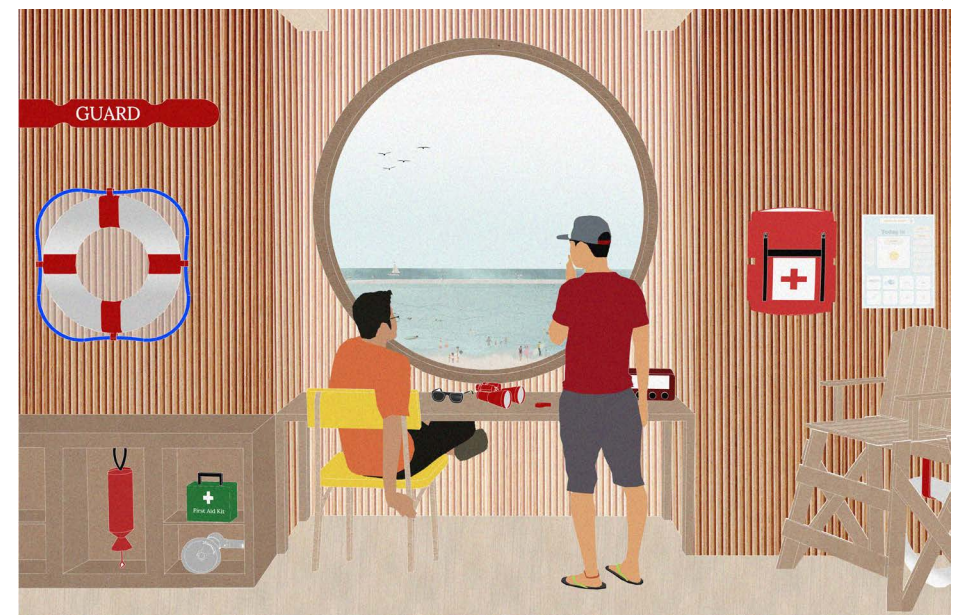


Initial sketches of promenade building



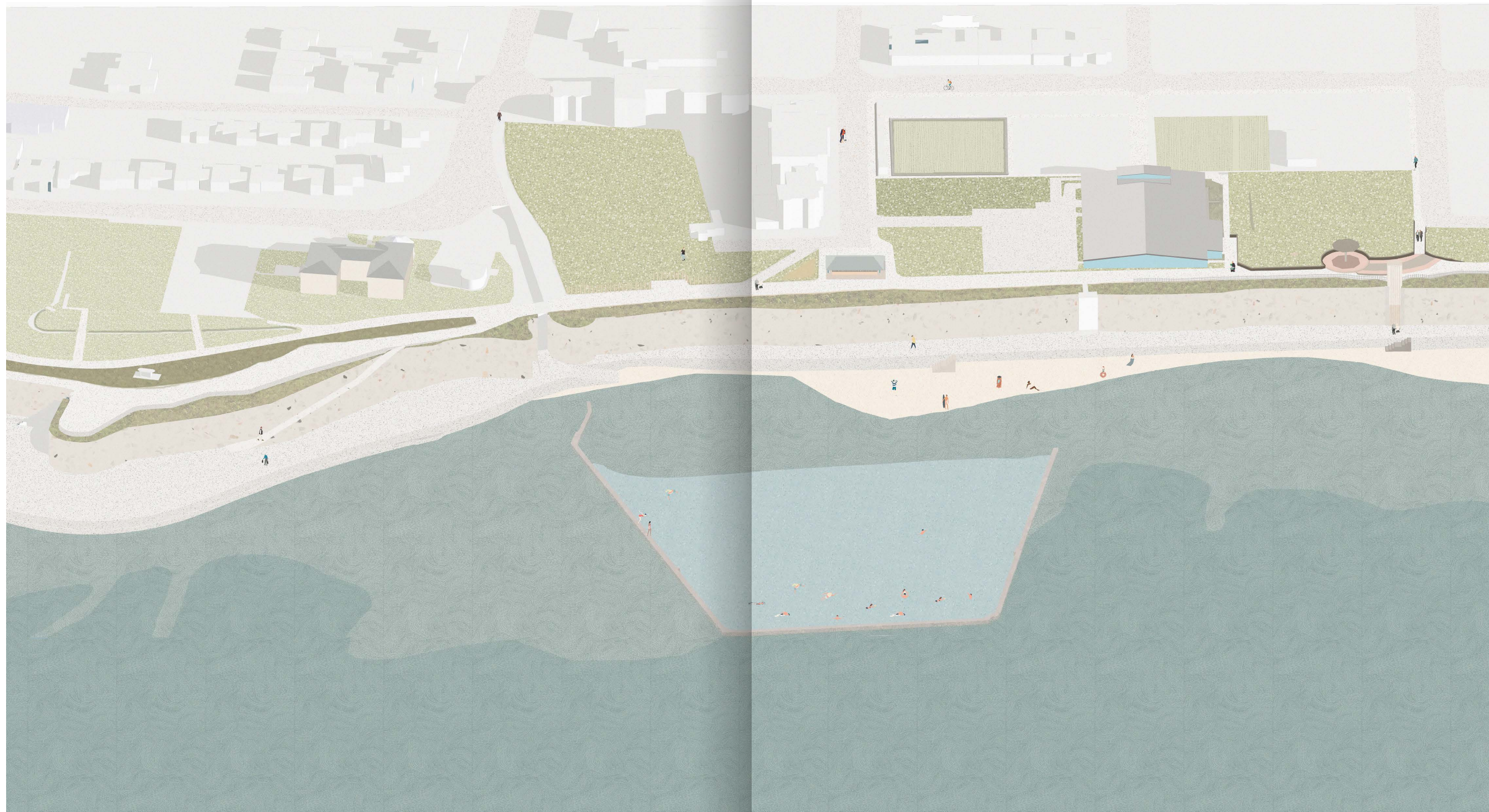
View of community spaces in the Margate promenade building

Looking from the Lifeguards Station overlooking Walpole Bay Tidal pool



- Upgrading historic promenade buildings and public realm
- Grade II listed tidal pool
- Protecting the local ecology
- Improving health and wellbeing along the coast of Margate

Public Wellness and Tidal Pool



Whitehall Museum, Sutton





↑
Restored weatherboarding dating back to the 1600s. The sundial was erected in memory of the first chairman of the Friends of Whitehall



↑
The museum photographed in 1925 had its characteristic white weatherboarding before falling into disrepair in the 20th century

Grade II* listed timber framed building dating back to the Tudor period

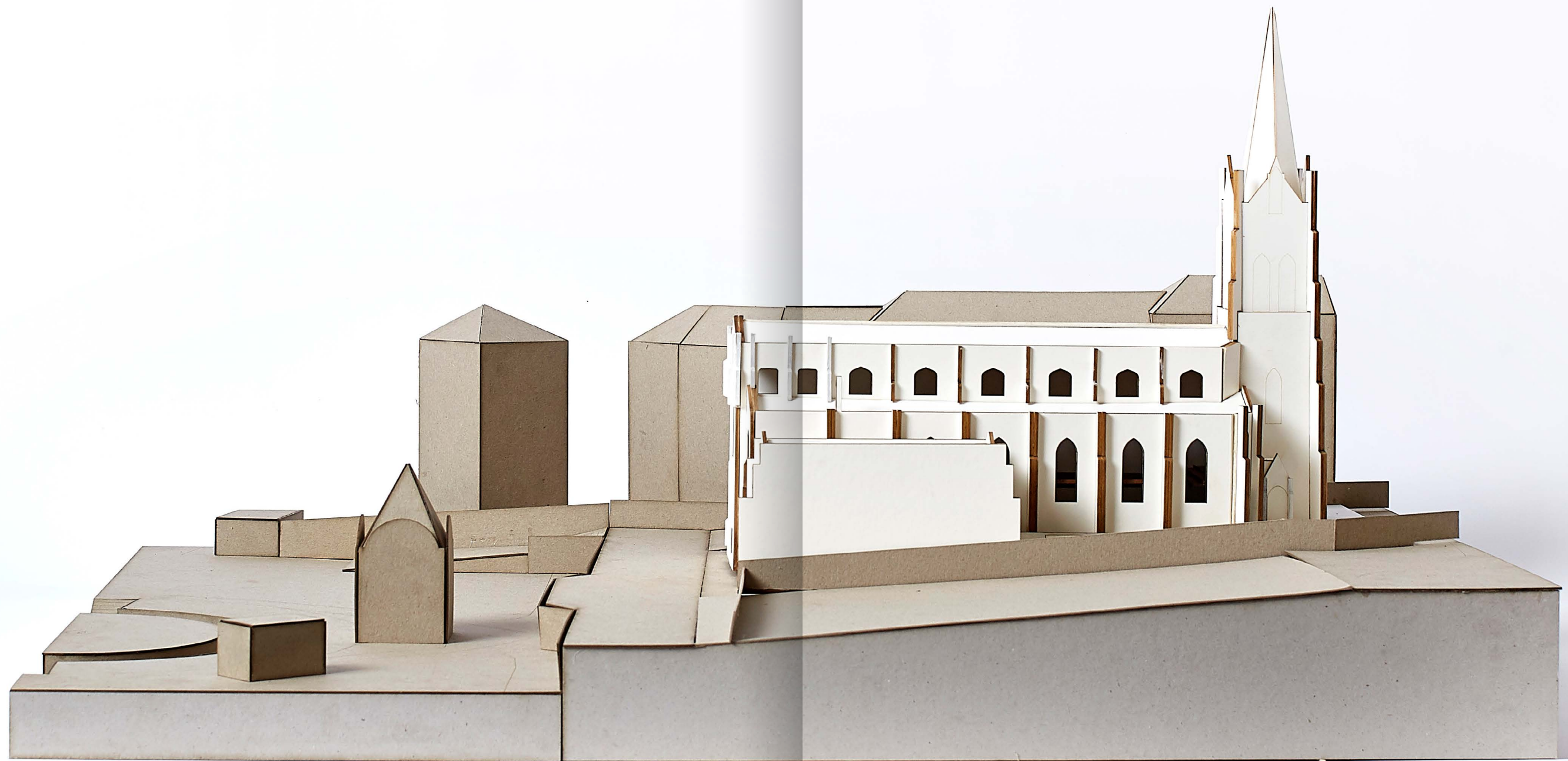
Green building techniques

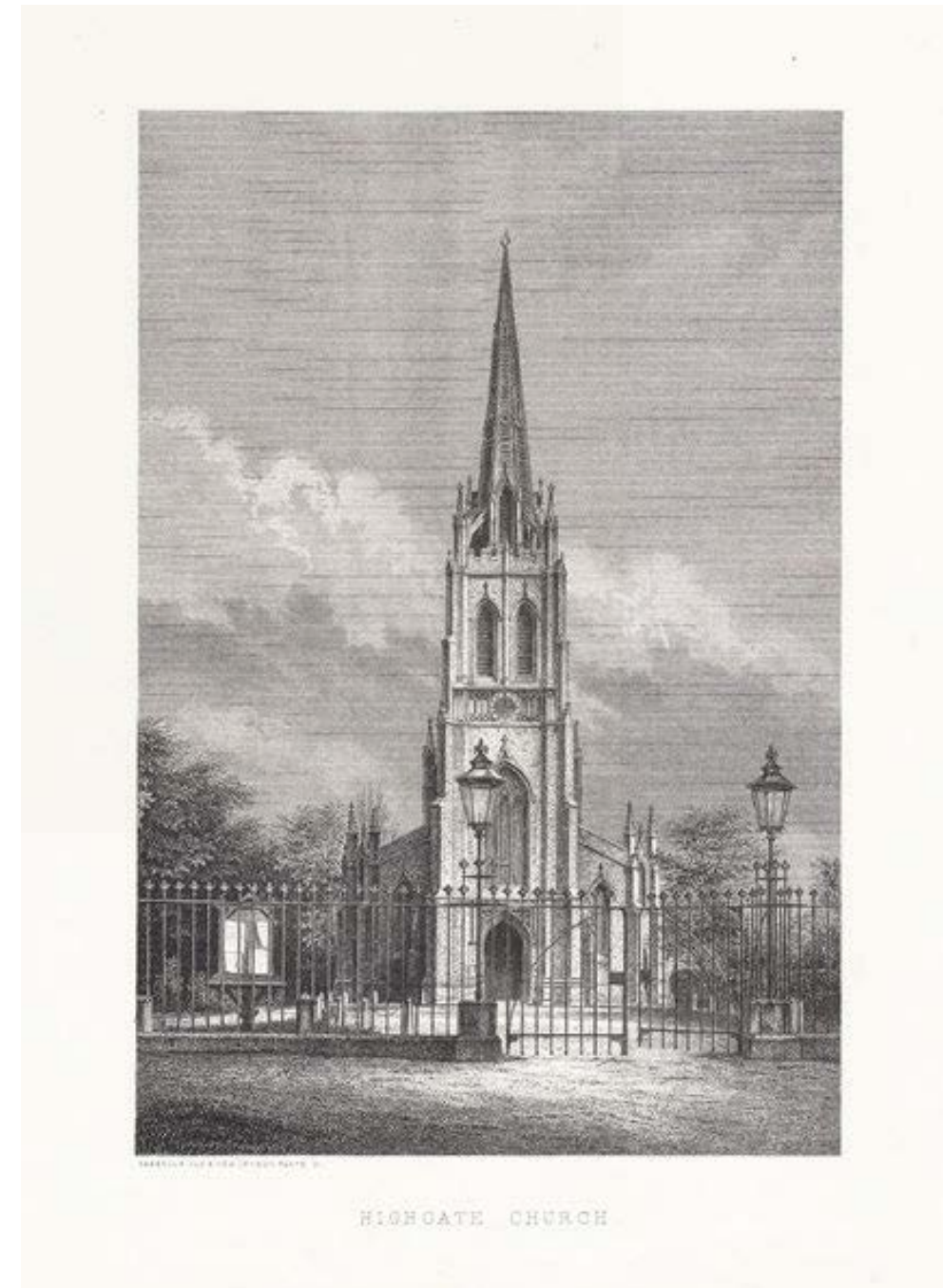
Careful repairs to the historic fabric

Creating an accessible environment for all

Accessing History

St. Michael's Church, Highgate





A historic etching of
St. Michael's Church,
Highgate



Modelling the restoration
and reconfiguration of the
crypt

Providing public access to a Grade II* listed building

The home of the remains of poet Samuel Taylor Coleridge

Creating a sequence of professional contemplative spaces

A focal point of Highgate

Celebrating History

Curl la Tourelle Head Architecture

Selected Projects

Podium Level
Shakespeare Tower
Barbican
London EC2Y 8DR
mail@clth.co.uk
+44 (0)20 7267 0055

Further practice studios at
Silver St, Deal
& The Paragon, Bath.

Latest News:
www.clth.co.uk/news

CLTH are signatories of the RIBA Inclusion Charter and are fully committed to making architecture more inclusive.

Winner: AJ Architecture Award 2023, Education: Alfreton Park Community School

Shortlisted: Civic Trust Awards 2024: Alfreton Park Community School

Shortlisted: Selwyn Goldsmith Awards for Universal Design 2024: Alfreton Park Community School

Shortlisted: Building Design Social Value Architect of the Year 2023

Shortlisted: RIBA London Awards 2023: Hornsey Library

Winner: Inspire Future Generations Award 2022, Diversity in Action: Newham Virtual School

Winner: Haringey Design Awards 2021, Better Building Standards: Hornsey Library

Finalist: Architect of the Year Awards 2021: Public Building Architect of the Year

Pop Up Schools as featured in The Times, The Telegraph, The Evening Standard, The Express, Architect's Journal and Dezeen

Winner: Planning Awards 2020, Mixed Use Scheme: Morland Gardens

Finalist: Civic Trust AABC Conservation Awards 2019: Whitehall Museum

Shortlist: RIBA London Region Awards 2019: Whitehall Museum

Finalist: AJ Retrofit Awards 2018: Whitehall Museum

Finalist: AJ Architecture Awards 2018: Public Building of the Year, Revitalise Peckham Rye

Highly Commended: Blueprint Awards 2018: Best Public-Use Project with Public Funding: Revitalise Peckham Rye

Winner: AJ Retrofit Awards 2014, Civic and Community: Unity Hub at Craig Park