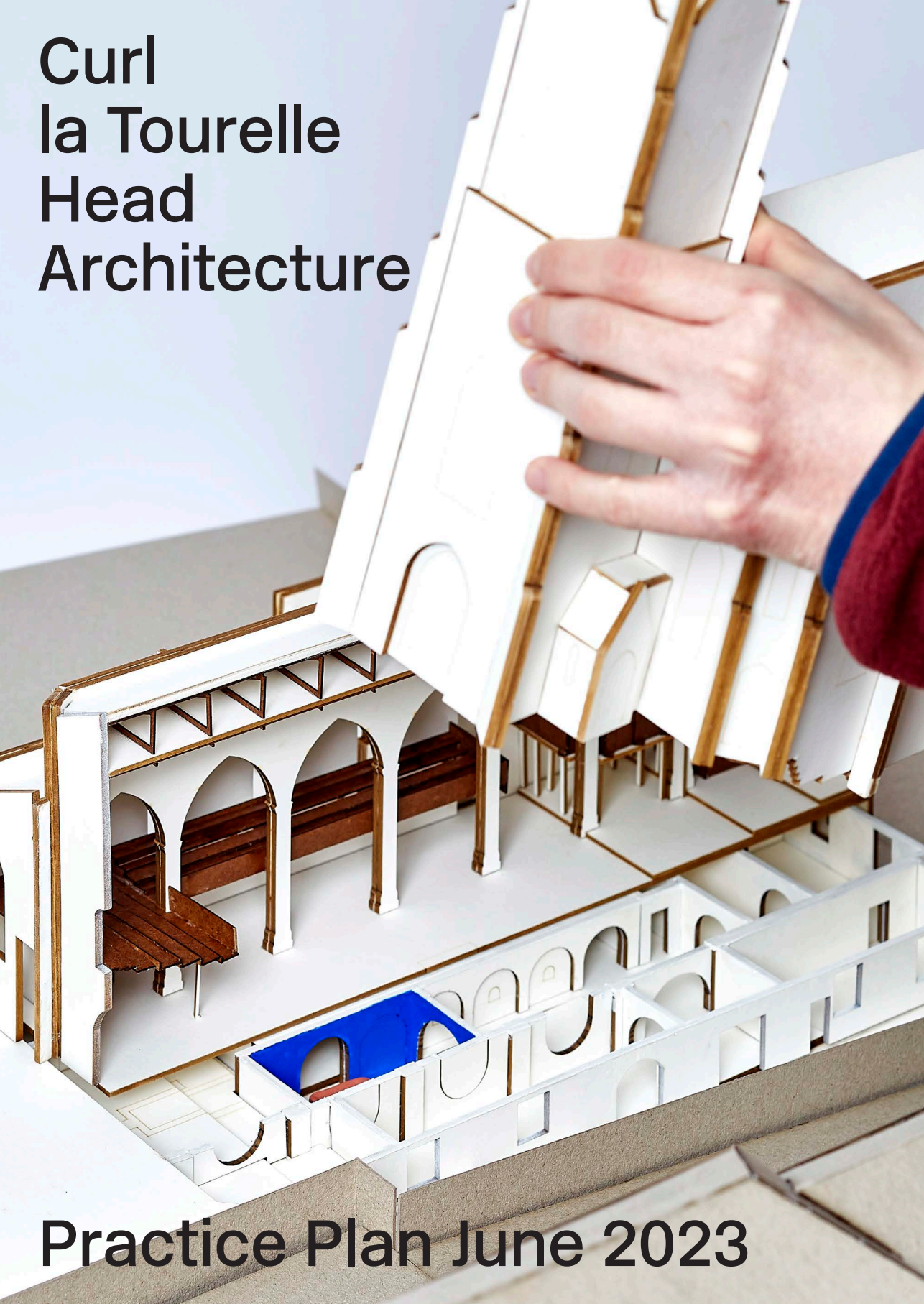


Curl la Tourelle Head Architecture



Practice Plan June 2023

A slow sea change is detected...

The recession, it's been tough post-pandemic and the recession is going on longer than expected and as the architect and writer Jeremy Till predicted, "the future is hairy". We have been reasonably fortunate in that we have some good clients, such as Haringey and Richmond Councils who have had the confidence to continue with what they are doing. We have varied in size as a team pre-pandemic being around thirteen and now ten. We have some areas of growth in the public arts and heritage sector which is enabling us to include other talents in our team such as conservator Diane Harvey and passive urbanist Esme Fieldhouse.

Management, I don't make all the decisions in the company, and I think it's difficult for a company to fulfil its potential if all decisions are made by one person. Our team is working on devolved responsibility and where experienced architects Mark Attmore and Amrit Seera joined last year with great effect in carrying projects forward. I am very proud of our current team at all levels and its ability to work through challenging times.

We have a small studio in Deal Kent and this does not exist in an attempt to grow the company it is simply as a means to make work winning in that region more possible. Equally, the possibility of utilising the Bath studio enables us to think about that region of the country with greater confidence. This feels organic on a small scale as we have managed to win work in both Dover with new social housing and Ramsgate on three Listed building projects and are the basis from which we will operate in the area.

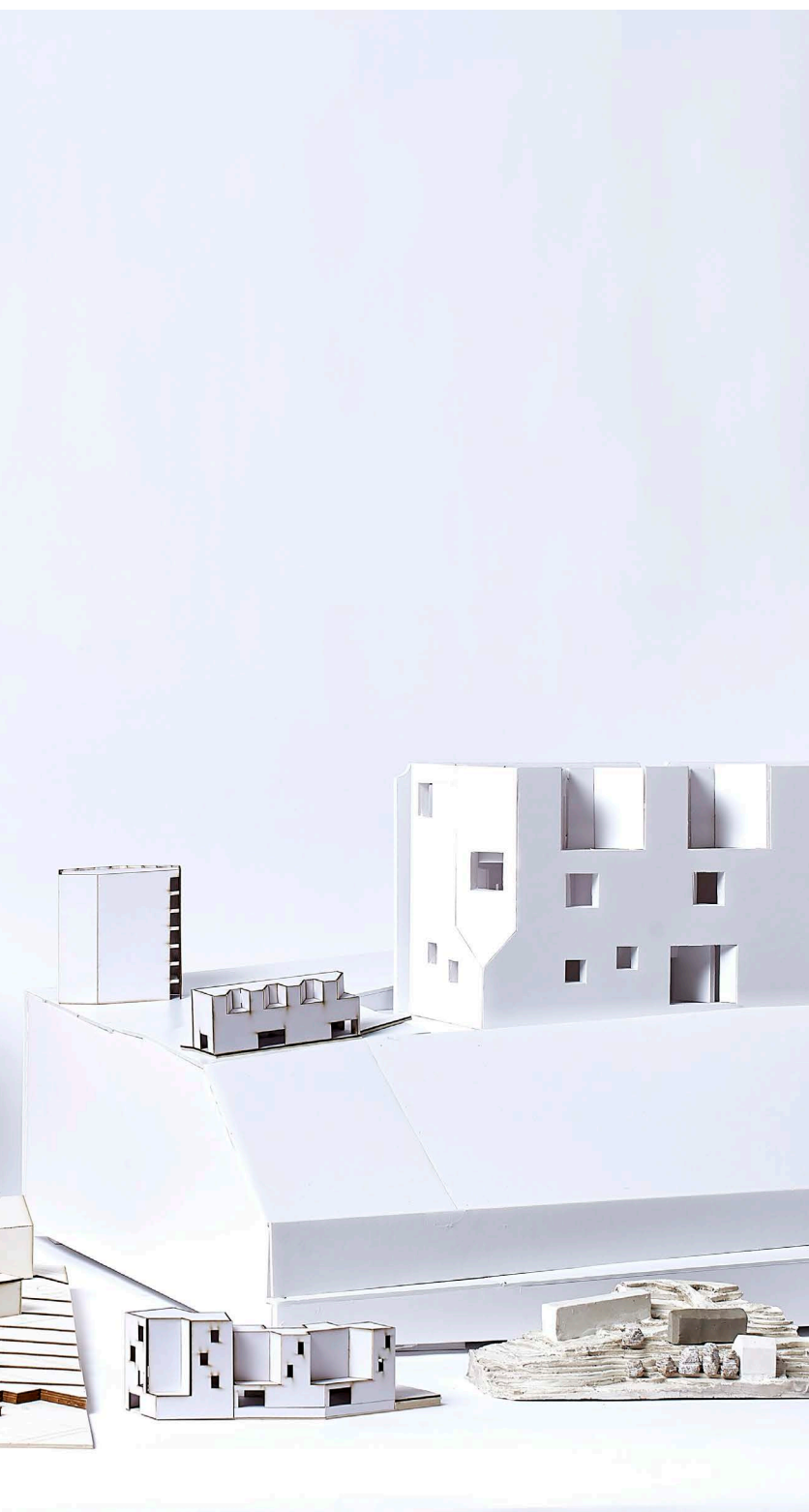
It is also most encouraging to have clients approach us with recent works for Canterbury CC on the Kings Hall seaside project and a request for feasibility works by the Freshwater Association who are sited on Lake Windermere. The completion of Alfreton school in Derbyshire is also pleasing to see and the design principles of generous, light filled rooms in contact with the sites tree lined surrounds working ou well on site and surviving the strains of value engineering. A strong aesthetic

outcome.

Housing is now more than fifty percent of our workload and what we want to do as we continue this exciting journey is to build houses that are a joy to live in for social tenants and also where we are building affordable homes, they will be generous in scale and have a strong focus on the quality of the main rooms. We are not window dressing elevations and small flats. Some of us have experienced poor accommodations as council tenants, students and know the impact of poor built environment.

So, what of the near future? As city dwellers we would rather have buildings that can adapt as society changes than be surrounded by redundant ones and we are part of mindset which believes in retrofitting buildings and are actively engaged in such work most recently at Hornsey library and with architect Archie Darroch working hard to reload an office block frame with new educational purpose. I think we would all applaud the removal of the need for planning permission for a building to change use-class between commercial and residential/educational/healthcare, it's not revolutionary, but we must do more than ever from an environmental perspective. And when we look at most London streets around us we see that this has been happening for a long time...anyone for a city walk?...





Collection of modelling work in our studio, photography by Kilian O'Sullivan

Our clients the focus of our work and thinking

Curl la Tourelle Architects was established in 1996 as a private partnership by Sarah Curl and Dean la Tourelle, operating from 80 Lambale Street (a converted dairy) in Gospel Oak, London, formerly the architecture studio of John Winter for whom Sarah had previously worked.

In October 2015 the practice welcomed architect Wayne Head as a Director and six months later renamed the practice as Curl la Tourelle Head Architecture. Wayne shares Founding Director, Sarah's passion for ensuring that new public architecture and infrastructure is built to the highest possible standard.

Client outcomes and value are at the forefront of our work and thinking, as set out in our studio summary:

We are a progressive and contemporary community of architects that focuses on sustainable and practical designs through a creative dialogue with our clients, consultants, contractors and communities. We will translate aspirations into appropriate, innovative and joyful buildings through integrated, context-specific design.

Our experienced team will create an individual solution for each project, large or small. Continuous attention to detail ensures the highest quality at each work stage. We welcome new challenges and apply knowledge gained from completed projects to new situations. Our hard-working buildings ensure maximum quality and value. We will listen to you, and we will act on what we hear.

Wayne comments that 'There is no question that good design adds value to a client's activities. The payoff is improved operational efficiency, a stronger identity and happier staff. The real question isn't "can you afford to have good design?", but "can you afford not to?". It is true to say that many of our commissions going forward will be through contractors in a limited Design & Build environment. The challenges in this case will always be to attempt to ensure that our key contractor clients are more than simply satisfied with our input but that also the built reality of the projects is still something which we as architects, the client and end users can be proud of.

We know that building projects are complex and difficult situations can arise. There can be misunderstandings and we understand that our clients are also under pressure to deliver. We must always be concerned if our services and value added has been perceived as less than excellent and avoid embarrassment for any client representatives when difficult situations arise. We wish to understand and discuss each point of concern and we should always request immediate contact from representatives instead of leaving things to generate potential misunderstandings.

Our offer to our clients is set out by our manifesto on the following pages.

Empathise and engage

If there's one thing we've learned makes better buildings, it's empathy. Architecture never happens in isolation—and simply by being interested and engaged, we've found it's possible to open up the conversations that connect a scheme to its clients and community.

We ♥ constraints

We believe that the more constraints there are, the better the architecture. If there aren't any constraints, we create them. Challenging sites, existing buildings and complex briefs almost always present incredible opportunities for great design.

Social detail

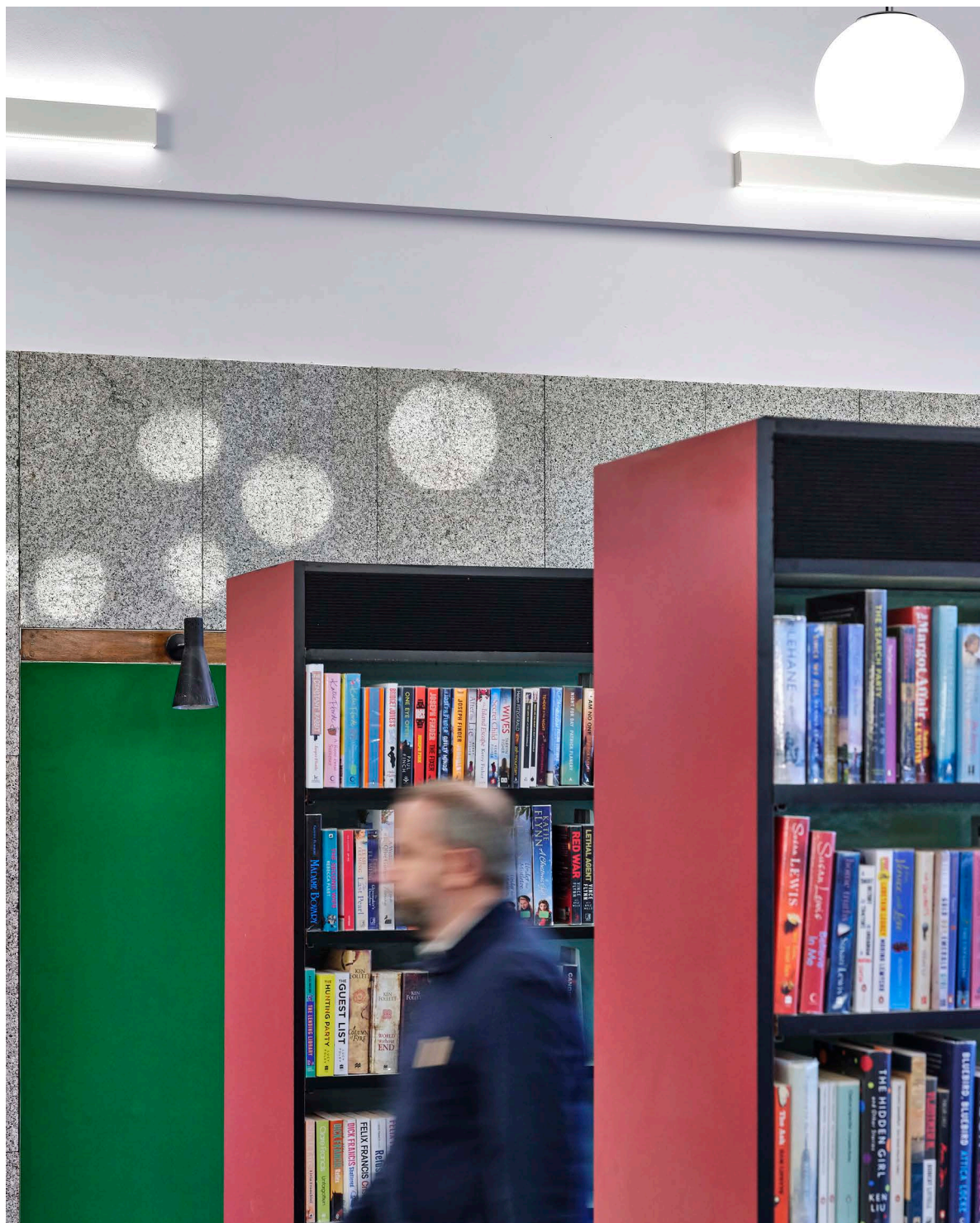
If a site's constraints guide the bigger design decisions, then it's empathy that informs the smaller, social details. These details frame the human narratives that aren't included in the brief, anticipating specific moments in the users' lives.

Passive future

To limit our environmental impact, we start with what is already there. By manipulating the form and fabric of a building—whether new or existing—we can work with the existing conditions of topography, light and orientation, and harness the natural energy sources offered by air, ground and water.

Mud on our boots

Good architecture is as much about what happens on the building site as it is about what's on the drawing board. By working alongside contractors as well as clients we can ring-fence the ideas and details that matter, championing the quality of the building throughout its construction.



↑
Refurbished shelving and new
lighting at Hornsey Library



↑
Decorative concrete facade
panels and mosaic wall

We have a number of key areas where we are able to add value for our clients, as well as ways of reaching out to new clients.

The Public Sector

Our strengths and opportunities clearly point to education, housing and healthcare as the principal areas of concentration for the year ahead. A key issue is definition of our market and job getting strategies. Our earlier Practice Plans discuss our spread of market, to which we have recently added Conservation / Heritage:

- Primary and secondary education
- Higher education
- Healthcare
- Arts
- Commercial
- Community
- Residential
- Mixed use
- Masterplan
- Conservation / Heritage
- Research and Initiative

We have seen funding announced for Further Education and look to make steps in this area, given our strong practice history here. We have also noticed local authorities implementing decarbonisation schemes, our experience in Newport, Richmond and Haringey allowing us to work on more similar schemes.

Frameworks

We have had recent success in joining frameworks, especially our appointment to Southwark's LHC Architect Design Services Framework in the conservation lot and the Metropolitan Thames Valley Housing Framework. However, we have not seen a pipeline of work resulting from frameworks we are on so far, which prompts a rethink, especially considering the effort undertaken in making applications to join. We also note that many frameworks are asking us to join their marketing efforts and will assess any resulting success from this.

A Spread of Building Types and Procurement Routes

Our determination not to specialise by building type has put us in an improved position to take advantage of the current market opportunities and we should go on nurturing this diversity in the future. This also means being conscious of relative percentages of our work within and outside PPP/D&B, which involves long periods where profit is at risk and design quality may be under pressure.

We should look for every opportunity to obtain commissions for projects in all areas where we have experience – arts, community, residential, mixed use – and seek opportunities for using ‘traditional’

procurement routes with new innovations.

Some recent projects, such as Hornsey Library are favouring the traditional procurement route which gives us more control over our design progression. We are seeing this continue for smaller projects.

Consultancy and Strategic Advice

The practice has been successful in the last three years in being commissioned to provide client side advice and consultancy. Historically this was a small component, but recent CDA work for Osborne Grove Nursing home and healthcare advice for Seven Kings Community and Healthcare Hub show this as a growing aspect of our work, as well as offering value in the opportunities and knowledge that it can generate. This has been further evidenced in our recent work for the Department for Education in tandem with Arcadis. Led by Jason, this now encompasses eleven schools across the country with more coming.

Wayne continues to engage with a number of design review panels which open the practice up to a wider knowledge of project types and active sector opportunities. We wish to encourage Associates to develop similar relationships.

Masterplanning

In addition to being a marketable service in its own right, masterplanning can be a key to gaining a strategic advantage in winning commissions for individual buildings. Engagement with urban realm at a large scale is also intellectually stimulating and provides an opportunity to learn about the larger forces that shape the environment.

We completed a masterplan for Brent at Conduit Way, focussing on liveable space and the joy in the social detail. We also have undertaken a self-led research project in to a masterplan of Urban Farms at the Welsh Harp in Brent and are focussing more time and resource in to research and development. The large scale of our work in Wolverhampton also builds on the masterplanning skills within the practice. We have increased our work in strategic masterplanning, with the well-received Haringey Education Sites Masterplan across 21 sites.

Charity links and social value

We have been particularly successful in providing an 8 week online programme scheme for care leavers, exploring how participants could best inhabit and look after their new flats, with great thanks to Marianne. This work won the Diversity in Action award in the Inspiring Future Generations Awards 2022. This has led to a new commission with the London Borough of Brent at the Gordon Brown Centre, providing learning opportunities and life skills for the Borough's care leavers as well as respite and a place to reconnect for families.

We will continue to offer this scheme to other local authorities as a key area where we can add social value, way of introduction to our practice



↑
Our charity work supporting care leavers recently led to a commission with the London Borough of Brent, designing for learning opportunities and life skills at the Gordon Brown Centre in Hampshire

and potential route for new work.

Our pop-up projects have continued to be influential, with our development of a 2m modular system proving applicable for refugee camp settings as well as educational. This has received press interest and featured in the RIBA Journal, we look forward to developing this further.

Research

Research projects are a fantastic way to test ideas and nurture an innovative approach to design. The promotion of this aspect of the practice's activities was strongly encouraged by Caro Communications. They see it as an important way of promoting the practice and generating new business opportunities.

We have recently engaged with two exciting research projects: one for an Urban Farm in the Welsh Harp area of Brent, and another, a study of the architectural details of New Towns across the south such as Milton Keynes and Stevenage.

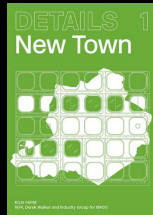
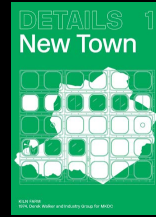
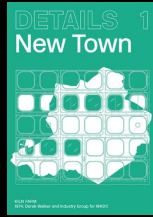
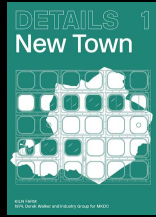
We are furthering our research work on Pop-up, having made two, unfortunately unsuccessful, research fund applications to develop our proposals for a semi-permanent modular unit. We will look for further funding opportunities and continue developing this work. We have however received press interest on this, with the 2m modular unit featuring in the RIBA Journal.

More Design and Less Stress

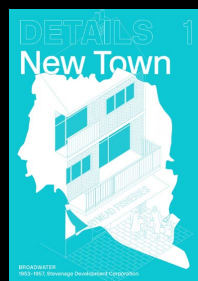
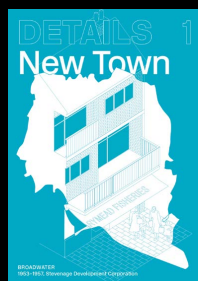
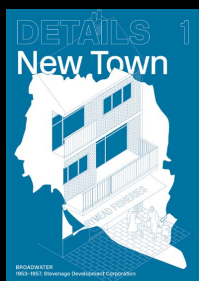
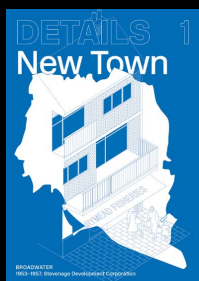
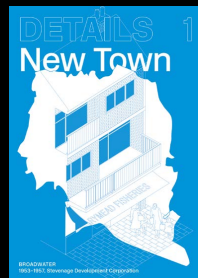
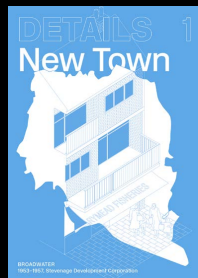
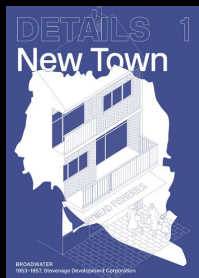
The aim of our processes and management systems is to find more time for inventive design coupled with as little stress as possible. One of our goals is to be more proactive in making things happen. This includes going the extra mile on our projects, and learning why some of our pitches were such near misses. It's important we all contribute to this discussion, even if you weren't working on the project.

The Principal will continue to look very closely at the level of support and help that is offered throughout the practice, not only to drive the work forward but to ensure that any changes in working methods are properly 'owned' by staff and not merely imposed.

We know that regular design discussion and review is critical and an enjoyable part of our work if it is carried out regularly across the period of our working week. The importance also of continued discussion around the potential conflict on the D&B projects between our aspirations and contractor client aspirations how can we bring them around to our point of view? We call this "Getting there by Design". We want to improve creativity, fun, the quality of architecture and the quality of life for everyone at CLTH.



Drawings from the Details publication and exhibition in Milton Keynes, furthering our work with local authorities and our practice profile





Geographical Spread

London has among the highest construction costs per sq.m. in the UK and fee levels are accordingly higher. But there are benefits in a larger geographical spread of work; it can bring new learning. For example, we are pursuing further work in the Higher Education sector which, if successful, will take us into other towns and cities.

Success in this area has already provided us with the opportunity to work in Dublin. Having a wider geographical spread of projects enhances our reputation by indicating a higher capability. Our health care project in Plymouth is testimony to this as is our successful work in Wolverhampton. Clearly, we have to maintain a balance between risks and benefits of working further afield.

We therefore welcome opportunities to work in all parts of the UK provided the scale of the project is financially sustainable. We have set a minimum threshold for work outside the south east at £2.5m, although some key arts and community commissions are worthwhile for the exposure they bring, and joy of the projects.

There is another important factor: less competition for projects outside London and the home counties and also more possibility of winning local awards. Feedback on our work on Alfreton Park School in Derbyshire has been positive and the project is almost complete on site. The Town Centre Fund is a good potential source for work outside London and work outside the UK continues to be a possibility.

Our website displays our geographic spread proudly, with locations outside London listed below:

- Adur & Worthing
- Aveley
- Carlisle
- Colchester
- Deal
- Derbyshire
- Dover
- Dublin
- Folkestone & Hythe
- Mandi
- Newport
- Norwich
- Plymouth
- Ramsgate
- Watford
- Weston-super-Mare
- Wolverhampton



↑
 Drawings of a new crypt space for
 the tomb of Samuel Taylor
 Coleridge at Highgate Church. Our
 time was volunteered to broaden
 our work in this sector and open
 the door to future opportunities



↑
Drawing of our new modular
pop-up system, developed from
our previous pop-up initiatives
and ideally suited to improve the
conditions at Napier Barracks
refugee camp

Marketing

Caro Communications stressed the importance of improving the way we present ourselves. We currently manage our marketing activities in-house, Wayne leads this with support from the team. Our current marketing activities include:

Branding

We have been working with Bob Design to develop new brochures and website. The housing brochure has been very well received, with other sectors to follow. Our new website has been launched and is an excellent tool for showcasing our work and talking through with clients. Projects are now linked by the 5 point coloured agenda reproduced in this practice plan and will be a useful framework for presenting our work as a practice.

Social Media

We have recently deleted our Twitter account, with our focus now on Instagram, the practice website and our recent establishment of Pinterest boards which already gain almost 2,000 unique monthly views. This helps us engage with our peers, while showcasing our office culture, values and ideas. Everyone should feel free to contribute! Pictures of site visits, models, and CPDs are especially welcome. We are also focusing on LinkedIn both as a marketing and networking tool.

Press

We have significantly increased our visibility in the media over the last year, and we want to build on this. As we've seen, interesting ideas, projects and winning awards are a great way to do this. We are increasing our journalist contacts and improving our relationships with them to keep pushing this forward.

Networking

This can be a new way of working where a core group of people expands according to each project and the expertise it requires. Or a core group that builds its projects around its networks. Such an effort needs to be highly inter disciplinary and collaborative in nature. In times where new work is limited this is more important than ever. Each person in the practice should aim to add six new people to their contacts list every month.

Client feedback

We have recently started collecting feedback via an online survey. Revealing full results would be biased as a representative number of responses have not yet been gathered, but all feedback so far has been overwhelmingly positive, with no negative scoring received. Some of the comments received are below:

Response to the brief

- CLTH addressed the project brief very well and actively contributed to enhance the output requirements with their knowledge and experiences
- The brief was followed throughout and the objectives have been met very well
- client very happy with the design

Design

- The ability of CLTH to present complex scenarios and issues in a visual way has been first class. The options and ideas presented to resolve difficult schools estate issues has been excellent
- proactive and flexible. Accessible and responsive. Queries dealt with promptly
- Very approachable and professional at all times

Management of the consultant team

- Overall control, leadership, communication has been excellent
- Good style of management applied throughout
- valued and important contributor to the ongoing project

Value for money

- Very high VFM. Such an extensive amount of work done/ completed for a reasonable market rate
- good design and valued ongoing contribution to the project

General comments

- Overall, an absolute pleasure to work with and delivered exactly what was needed. The brief was challenging and without this team we would not have had all the necessary knowledge and skills to complete
- it's been of great help to have CLTH Architects continued involvement
- I strongly believe that both parties benefited from this interesting commission and will take forward a number of key lessons that will enhance and improve service delivery.



↑
Fold out elevations and coloured
plans from Hornsey Library



↑
Further library work in Haringey
following Hornsey Library

Frameworks

- LHC Architect Design Services (ADS1.1)
- BHCC HP DPS for Construction Related Consultancy
- NHS Estates & Facilities DPS
- Tower Hamlets DPS
- London Construction Programme DPS
- Essex Procurement Hub - Construction Consultancy Framework
- Clarion Housing Group Framework
- Metropolitan Thames Valley Housing Framework
- Golding Homes
- Perfect Circle
- Bloom
- Pagabo

Local Authority Clients

- Adur & Worthing Council
- Canterbury City Council
- City of London Corporation
- City of Wolverhampton Council
- Cumbria County Council
- Derbyshire County Council
- Dover District Council
- Folkestone & Hythe District Council
- London Borough of Barking and Dagenham
- London Borough of Barnet
- London Borough of Brent
- London Borough of Camden
- London Borough of Croydon
- London Borough of Enfield
- London Borough of Hackney
- London Borough of Haringey
- London Borough of Merton
- London Borough of Newham
- London Borough of Redbridge
- London Borough of Richmond
- London Borough of Southwark
- London Borough of Sutton
- London Borough of Wandsworth
- Metropolitan Police
- Milton Keynes Council
- Newport City Homes
- North Somerset County Council
- Royal Borough of Greenwich
- Stevenage Borough Council
- Thanet District Council
- Tower Hamlets

Contractor

- Bouygues UK
- Buxton Building Contractors
- R Durtnall and Sons Frameworks

- Galliford Try
- Graham Construction
- Kier Group
- McLaughlin and Harvey
- Morgan Sindall
- Willmott Dixon Construction
- Neilcott Construction

Schools and Education Bodies

- Department for Education
- Haringey Council Children and Young People's Services
- London Diocesan Board for School
- Thames Partnership for Learning
- The Girl's Day School Trust
- Oasis Community Learning
- Bath and Wells Multi Academy Trust
- All Saints Catholic College
- Trinity College Dublin
- Sure Start King's Cross
- The Beckmead Trust

Private Clients

- Hornstar Ltd
- Peabody New Homes
- Scott Developments
- Delfont Mackintosh Theatres Ltd
- Devonshire Partnership
- Trinity College Dublin
- WestGreen Studio
- John Lyon Independent School Harrow
- Girls' Day School Trust
- Al Noor Foundation
- London Fields Solutions
- Landrise
- Dr. Daniel Turton
- Mr Todd Taylor
- Harrow Foundation
- Occupation Road Artist Studios
- Qualis Group
- Sutton Living
- St Michael's Church, Highgate
- Aviva
- Arcadis
- Sylvia Young Theatre School

NHS Clients

- University Hospitals Plymouth NHS Trust
- Homerton University Hospital NHS Foundation Trust
- Royal Wolverhampton NHS Trust
- Wolverhampton Care Commissioning Group
- Black Country Healthcare NHS Foundation Trust
- Redbridge Care Commissioning Group
- Osborne Grove Nursing Home Haringey

Technology and innovation

working ambitiously

The tangible product of our work is information: information as drawings, other graphic text, on paper or digitally transmitted and through inter-communication.

We don't actually produce buildings though we often think of ourselves as doing so. Others turn our information into buildings and sometimes we prepare the ground for others to develop designs and design information. Our ultimate customers may be the users of the building but our immediate customers are those who will be using information received from us to do their part of the job.

Following the outset of the COVID-19 pandemic, it is clear that the world of work is changing and that technology has facilitated a new way of working that the architecture profession had not thought possible before. Working from home, flexible working hours and the dominance of virtual meetings prompt a rethink of how we work and what we produce.

Primarily we are collaborators, not just among practice members, but with multidisciplinary teams, clients and communities. While we have embraced this new way of working and the technologies that come with it, we have been careful to ensure that, throughout, we are still a team of collaborators and not individual operators.

We have moved to a new studio on the Grade II Listed Barbican Estate, in the former police station at the base of Shakespeare Tower. This new space prompted a rethink of how we work and what we produce, with the opportunity to sculpt this new space to suit our working methods. While we have embraced technology such as Microsoft Teams, remote server connections and virtual meetings, we recognise the importance of meeting face to face, discussing printed drawings, making physical models and drawing with pen and paper.

Our new studio will give us the opportunity for these activities to co-exist and complement one another. We do however recognise that this is a tricky balance and this way of working is still nascent. Although we may not get this exactly right first time, our new studio will offer us the opportunity to adapt to any emerging issues and embrace the positive changes that we see. We want to be ambitious in how we work and use technology to ensure that quality is maintained for our clients and we are designing the places, space and buildings - in that order - that work for communities and that we can be proud of.



Shot of new office within
the base of Shakespeare
Tower with Kilian O'Sullivan

Office Culture

An important aspect of the practice is the office culture. As the team has expanded and changed, we created a friendly and collaborative atmosphere.

During the Covid-19 pandemic we developed new ways of keeping our office culture developing, from simple things such as everyone talking about their weekend in our weekly Monday morning office meeting to socially distanced walks around Highgate. We built in a regular programme of Cold Room Talks and round-table discussions in evenings and lunchtimes on important topics such as the new London Plan. Through these activities we were able to feel a sense of communality and many of these ideas have been maintained now we are back in the office.

We have transitioned into a hybrid model of working from home and in our new office space, and we expect that our office culture will flourish and develop in new directions. The studio works in a collaborative and sociable way, expertise and knowledge is shared across the projects. It is important that these relationships and the staff's personal development is recognised.

Now we have moved into our new space at the Barbican, we will ensure regular face-to-face meetings through in-person catch ups at the Barbican Centre, as well as people's homes. We will also plan office social events and meet ups to connect as a team informally, important especially for new starters.

Administration, IT and Virtual Connections

Frehiwot works with each project lead supporting QA related activities and leads the Practice's audit to achieve ISO accreditation. The effectiveness and efficiency of all staff is reliant on good studio support. This has been increasingly important over the last year, with the pandemic ensuring we have to physically distance from one another. Continuing support from Frehiwot ensures the highest quality is maintained.

Tied to this, IT support has taken on increasing significance as we all work and meet virtually, maintaining IT support whilst we are apart is managed by Jason who continues to liaise with IT consultants to ensure we retain our efficiency whilst dialling in to the network. We have invested in video conferencing facilities for the office and are planning for 'teams booths' in our new space where online meetings can take place without disruption.

Wayne has stated an ambition for a 'wireless office', where cabling can be cast aside to facilitate an improved aesthetic and agile form of working. We are looking into the implications of this and how we can upgrade telephone systems and data connections.

Achieving Targets (and knowing what they are!)

Time vs Fees will continue to be a strong focus in 2023. There are two main factors that influence our profitability: a) the mix of projects and b) productivity in relation to fees earned. Not all projects will be as profitable

as others and our minimum aim for all projects should be break even. In certain circumstances, good fee earning projects need to fund some other projects which might be enjoyable and raise profile but which will never be profitable. We want to maintain a balance in workloads, and share the joy of these small projects.

Financial Productivity

In terms of volume of ideas, quality of drawings and response to contingencies the output of the practice has been higher than generally found in other firms and reflects the commitment and skill of the staff. We do however know that we consistently exceed the hours budget on projects. Some of this excess should rightly prompt applications for additional fees but may not qualify if the excess is due to:

- Avoidable re-working
- Poor design management
- Poor project management, particularly with the control of the client, consultant, and contractor input
- Inadequate fee from the start.

On recent smaller projects we have given special attention to time spent vs. fees earned, and we have seen encouraging results. It has been harder to monitor outputs when working from home, increasing the importance of scheduling design and technical reviews and JAMs with adequate time for comments. We look forward to meeting regularly in person in our new office space.

Office Culture and Training: Participative

Caro Communications recommended that we manage and prioritise office culture, because the whole has potential to be greater than the sum of its parts. This should include:

- Knowledge sharing
- Empowering of the senior team
- Investment in staff, including Revit training, Passivhaus Designer training, Conservation MSc, sustainable design training.

Empowerment of the senior team and Investment in staff

The office is committed to supporting staff through their Part 3 course and exams through lunch time discussion and mentoring sessions, such as Archie's recent success on completing her exams. Updates on changes in regulation are provided through our regular CPD programmes and training in BIM and Revit training courses have been attended by many of our staff.

Knowledge Systems

From discussions around our knowledge systems it was clear that staff can no longer rely on osmosis to learn how to do things, and traditional knowledge resources – a library, subscriptions to information

services such as Barbour Index, a hard copy 'book of details' and a variety of largely unconnected databases and electronic document files – are no longer enough. It is now widely understood that in any organization the quality of flow and transfer of knowledge in its many forms is a key element of high performance. We know that there is a lot of knowledge locked up in individuals which if more widely shared could dramatically improve the practice's capability. The growth and management of knowledge in the office is our best defence to the threat from our competitors.

Knowledge Sharing

Office meetings have become weekly to maintain contact amongst staff and share knowledge on project statuses and awareness of all work across the office. We wish to make more of open design discussions and presentations on current projects which encourage knowledge sharing and ownership, initially over teams and in-person as we move in.

We have an extremely knowledgeable resource in Peter and Lesley and staff are encouraged to review their reports and review sessions to improve their own knowledge, skills and understanding.

CPD sessions

We hold regular lunchtime CPD sessions which are sometimes wonderful, often satisfactory and very occasionally awful. We have adjusted this programme to include more aspects relevant to the practice and ensuring a 'green-thread' runs through everything we do, led by Archie and Amrit.

Since the pandemic, we have found CPD sessions are less frequently in-person, but this has become an opportunity to reach out and speak to a wider group of people and in more varied settings. For instance we recently enjoyed a virtual tour of a cob factory in Cornwall with live demonstrations of construction techniques and built products which would not have been possible without mobile video calling and other technological advances.

We also intend to bolster this area of activity in other specific areas such as R&D, legal and professional, CPD, IT and marketing. Archie and Amrit have been leading on CPD and we ask others in the office to make and take forward suggestions for this programme.

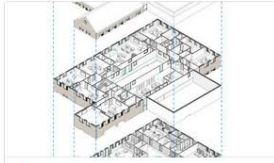
Higher Level Lessons Learnt

Search



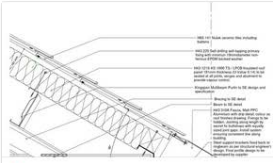
★ Barnet PRU- Refurbishment

refurbishment demolish



★ Barnet Pru- Signing Off

Signing off



★ Barnet PRU- Be Conscious of British Sta...

British Standards



★ Barnet PRU- Building Height Tolerance

building height



★ Sutton Housing- Signing off

Signing off



★ Sutton Housing- Planning Officers

Planning Officers



★ Sutton Housing- Frameworks

Frameworks relationships teams



★ Brooklands- Easement

Brooklands Easement

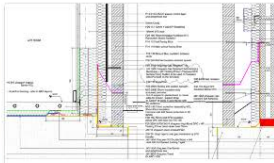
Details

Search



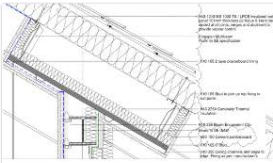
★ John Lyons

MVHR School



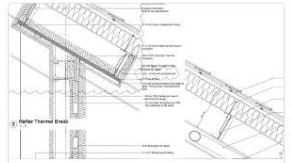
★ Barnet Pru- Acoustic Performance

acoustic block



★ Barnet Pru- Pitched Roof

roof fire rated



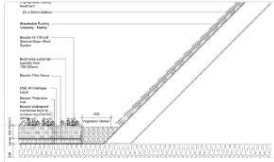
★ Barnet Pru- Thermal Continuity

roof



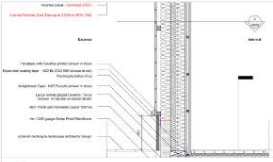
★ Barnet Pru- Passive Supervision

Design Glazing School Education Children



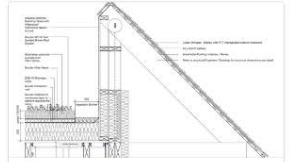
★ Brooklands- Green roof

Brooklands Green Roof Sedum



★ Brooklands- Thermal Bridge

Brooklands Thermal Bridge u-value



★ Brooklands- Service distribution

Service Distribution Brooklands Load Capacity

Green Knowledge

Search



★ Hempcrete

biobased construction hemp lime low impact



★ Clayworks

render breathable clay sustainable



★ Reedboard

natural biobased construction sustainable



★ Solitex Membrane

membrane breathable roofs

Knowledge Bank

The practice's knowledge bank, which initially just gathered lessons learnt from our built projects, has been expanded to include examples of best practice throughout the RIBA Stages. The information now comes under four headings:

- Green Knowledge
- Higher Level Lessons Learnt
- Details
- Example CLTH Documents

The information has been obtained through interviews with key staff working on projects and collated both on our servers and as an online resource. People will be asked to make a contribution on:

- An aspect of design, construction practice, such as natural ventilation in schools or stabilized school blocks
- A finding from research in the office, for example on slip floor finishes in healthcare facilities
- A finding from experience on site, such as how to achieve a good finish to fair faced concrete
- A reference to a particularly useful external source of information, knowledge or guidance

The only rule for a contribution is that colleagues are likely to find the information useful.

The Knowledge Bank is currently being managed by the Project Architect team, Amrit, Archie and Mark to populate the resource. Although the role would be well suited to a Part I, as interviewing staff for the knowledge bank creates an invaluable understanding of key issues and projects in the practice can be gained. It is important still that not just one person has this knowledge and that quarterly presentations are made to the office to disseminate further.

Visible links between knowledge sources and activities – knowledge bases, office meetings and seminars are all vital. We plan on asking staff attending events to provide an overview or summary that can be disseminated to the wider office via the knowledge bank.

With CPDs sometimes cancelled, in the future we will use the opportunity to collectively discuss a topic from the knowledge bank.

Cold Room Talks

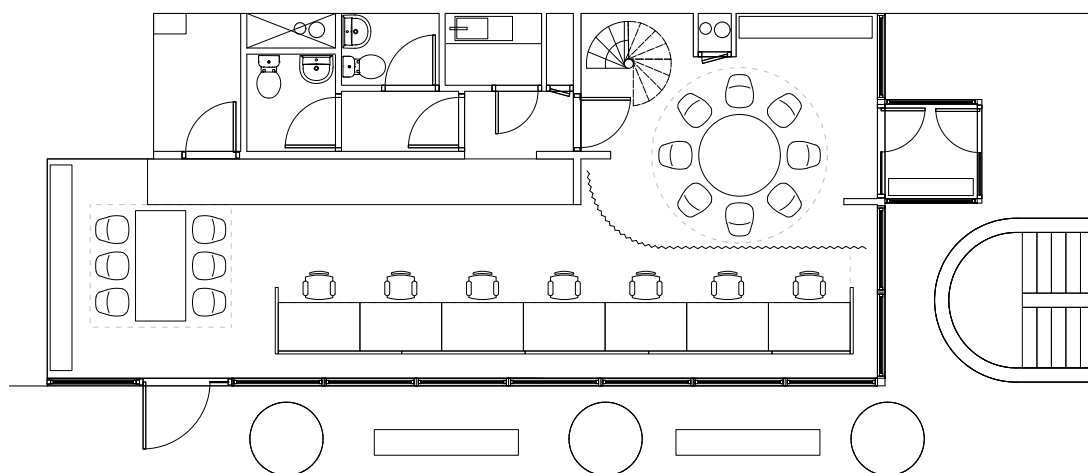
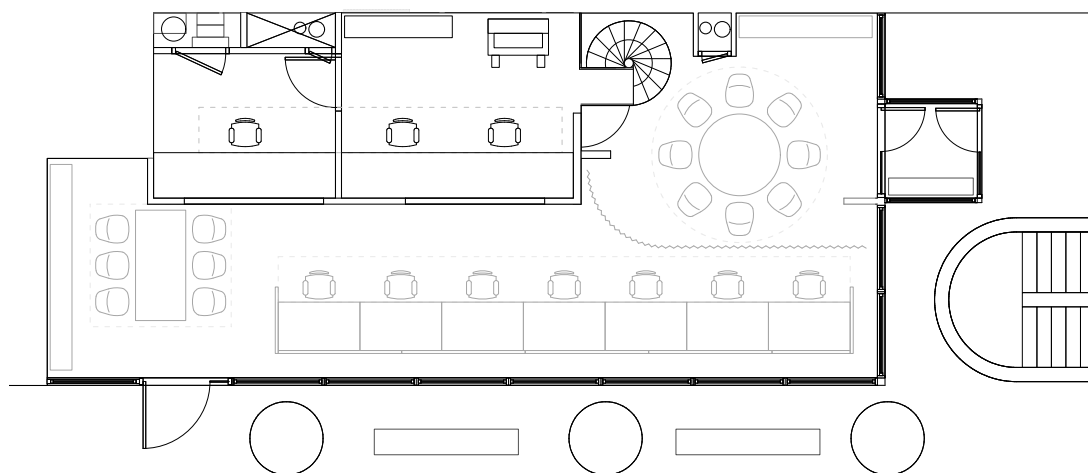
Following a successful programme of Cold Room Talks from staff members and guests, Director Wayne Head has begun a new series of 'Head Talks', with other staff members responsible for organising Cold Room Talks.

Unfortunately these have not yet taken place and a leadership council member should take charge of these so that we will continue to improve our knowledge and response to pressing issues. It is envisaged that these will be a balance of internal staff talking about projects and areas of interest to themselves, as well as external consultants, practices and collaborators



↑
Completed photographs of
Alfreton Park Community SEND
School by Kilian O'Sullivan





↑
Emerging ground floor and
mezzanine plans for our new
studio space in Shakespeare
Tower at the Barbican Estate

Our Workplace Environment

We moved to new premises in the Shakespeare Tower in the Barbican Estate a year ago and continue to refine the premises, with recent installation of some shelving for models and a new flat screen for CPDs and client presentations. The Barbican Estate is a fantastic location for an architecture studio and we have made the most of nearby City walks and free lunchtime concerts where possible.

Given the small space of the new office, we have focussed on activities which require communal input or are outward facing, including group working, project and drawings review, meetings and events. Although there will be space for individual working, the advantage of the hybrid model means that these can take place at home.

Model making is a core practice activity and unfortunately our new studio does not have space for this. We have however established a larger meeting room and/or model-making space within the nearby Geranium shop in the Barbican Estate's Lauderdale Tower which we look forward to making use of shortly.

Practice Standards

CLTH is a RIBA Chartered Practice, with a Quality Management System (QMS) and Environmental (EMS), Employment, CPD and Health and Safety Policies in line with professional standards.

We are certified to the Quality and Environmental Management Systems ISO 9001 and ISO 14001 both of which were recently renewed. Third-party certification bodies provide independent annual audits to confirm that organisations meet the requirements, making ISO 9001 one of the most widely used management tools.

Our practice systems are based on RIBA models, modified to suit our needs. Projects each have Quality Plans to underpin the standards of their design and management.

We are aware that we can improve on ensuring standards knowledge is disseminated through the office and are looking at how we can ensure compliance with British Standards when updated, as well as other key standards such as the approved documents.

Regular meetings between the Leadership Council has enabled a more coordinated involvement in Practice Management. Some staff members, as well as Associates, are active in helping to manage various areas such as Premises, Quality Assurance and Health & Safety.

Both Vectorworks and Revit continue to be used and standards have been set up for both developing skills around BIM and IT security. Revit courses have been well attended by all members of the Leadership Council as well as several other members of staff. We wish to continue advancing this aspect of the practice and the efficiencies that BIM working can create. We will encourage staff to form a working group to progress this.

Architectural Quality, Whole Systems Thinking, Integrated Design

While the practice internally takes a collaborative approach to architectural quality, Wayne wishes to be personally happy with what goes out of the office.

Unlike delivery, quality is an area with much scope for individual judgement. On any particular project, every one of the core project team needs to 'own' the design. Not only does the Principal wish their attachment to projects to be maintained, we often assure clients and potential clients that this is a practice where the Director will not disappear from sight after the interview, but remain involved in the design and its implementation.

Of course the prime expertise of our practice must and will always

remain architectural skill and knowledge. Perhaps the key realisations are that management improvement is vital to improving the quality of our architecture and nurturing of the spirit of enquiry which we want to place at the heart of our work.

We are aware of the challenge in maintaining quality when we are working from home or otherwise distanced, whether it is the loss of opportunity for casual questions to the colleague in the adjacent seat, or inevitable communication issues and difficulty in maintaining the same level of focus in online meetings. We have learned over this period how to better mitigate these issues and by returning to a physical studio this will be much easier. However some element of working from home will remain and all, especially the project leads, will need to make sure that the principal has suitable opportunity too review the quality of work produced before issue in the format that is best suited. Timetabling of regular design review is a key tool in this.

Working Hours

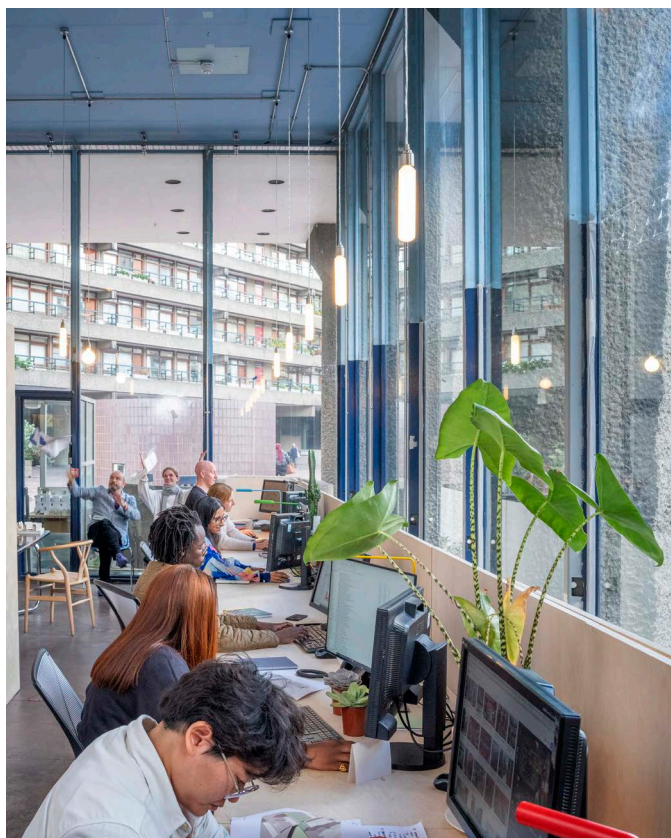
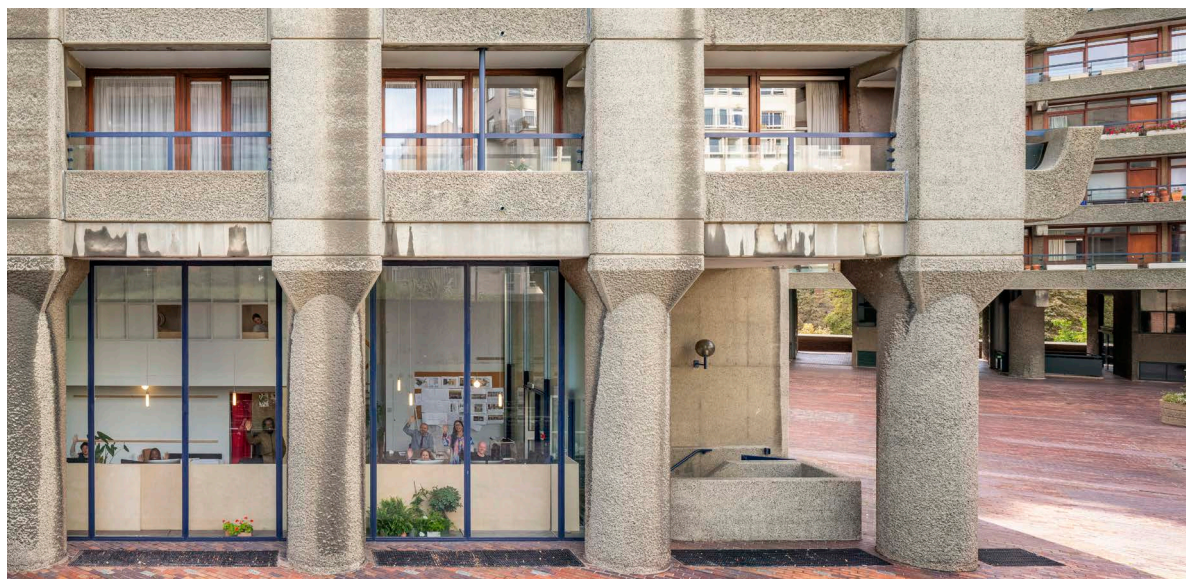
We wish to make long hours an occasional exception – e.g. when incurred in connection with a competition, or unusual project demand. The practice recognises that continuously working long hours has an effect on staff well-being long-term and is not sustainable.

We can help in a number of ways as we review staff input and can also agree time off in lieu. We can also identify and discuss with those who do the most work out of hours to try and understand the reasons and we can offer support. However we note that long hours do occur and there is a media conversation regarding overtime pay. We wish to target elimination of the need for overwork in the first place, but offer time off in lieu when this does unfortunately happen.

It is however, an expectation that senior staff may need to commit extra time due to the unpredictability of incoming bids, deadlines and unforeseen events

Advocacy and Ownership

We want to give other members of the practice more sense of ownership. Promotion and advocacy of the firm will be more widely shared. All staff are more than capable of having authoritative input on the big issues and clients' concerns. Cash flow projections will be shared with senior staff at Directors & Associates' meetings (DAMs).




 New office shots by Kilian
 O'Sullivan, after conversion from a
 police station



↑
Team shot from 2022 by Kilian
O'Sullivan outside our new studio

Respecting the climate and the planet

We are very proud that sustainability, retrofit and conservation is important to us all, and while we have been consistently strong in this area we are always looking to push our ambitions further.

We are in a climate emergency, low energy design saves money and reduces carbon emissions. It anticipates the future: the inevitable end to our reliance on fossil fuels. Minimising energy use is a key element in the ideal of zero waste and the wise use of resources that add up to sustainable design.

We are committed to helping our clients achieve their sustainability aims affordably, whether through new buildings or the intelligent renewal or retrofitting of existing buildings. Our recently implemented Environmental Plan is key to achieving this.

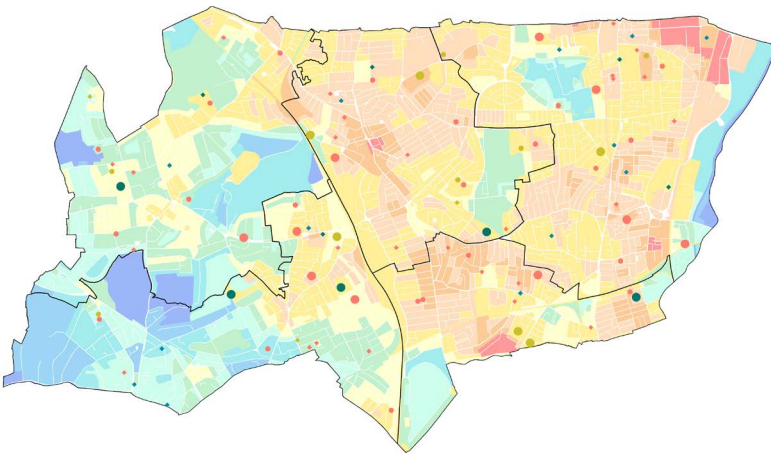
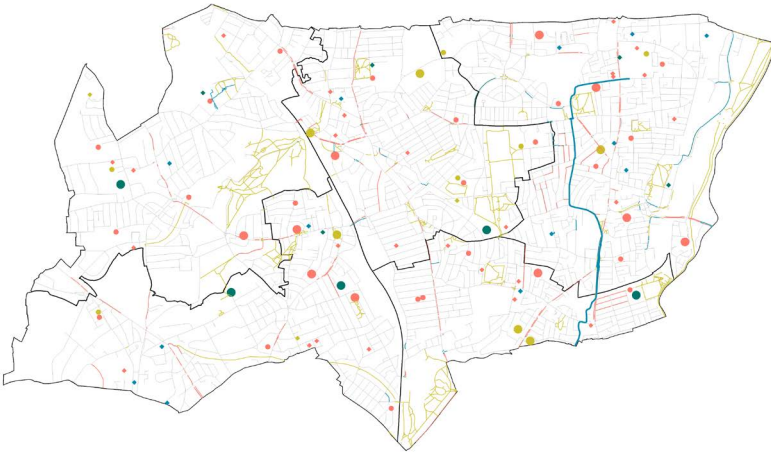
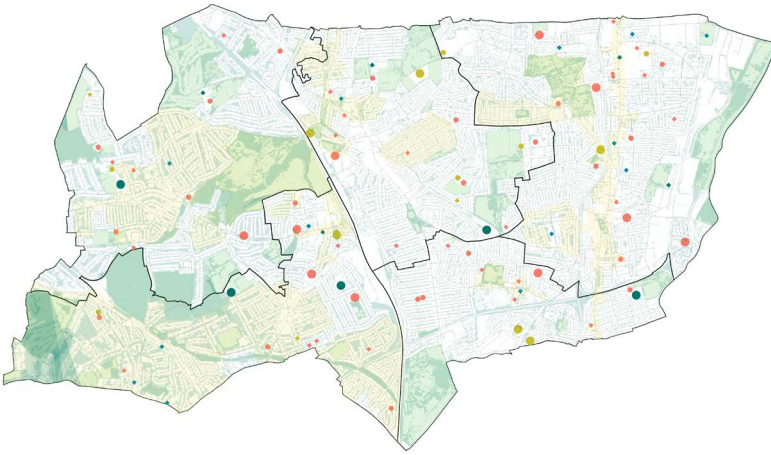
We focus on designing versatile and adaptable buildings with simple, robust and well-integrated services which meet current needs, whilst allowing for possible future ones, as yet unknown. Our buildings achieve high scores in BREEAM, LEED and Code for Sustainable Homes but our starting point is in simple, precise and easily understood measurements, primarily of energy use and carbon emissions. Post-completion, we work with our clients to fine-tune buildings, monitoring occupant behaviour to further minimize energy use.

As climate emergencies have been declared by multiple local authorities, we have seen first hand the rising importance of these issues in the work we do. More and more tender opportunities ask for evidence of Passivhaus experience and delivery of BREEAM outstanding. Following campaigning by many of the groups we are involved with and support, we are seeing changes to regulations. While these do not always go as far as we may wish, as with the Future Homes Standard, there are other encouraging signs such as the recent announcement that regulation of embodied carbon will be debated in parliament

While we have worked on BREEAM outstanding schemes, we have not yet delivered one, or worked on a Passivhaus scheme. This will be a key practice aim. We also wish to further our knowledge of embodied carbon assessment and the tools available for this, ensuring we are not focusing only on operational carbon.

We are pleased to see that sustainability drives the built environment agenda and we have made this central to our office culture in our CPDs, reviews and collaborations. We know that Net Zero must be reached and we are expanding our knowledge to get there. How we get there and empower ourselves to do this will be key to our ongoing office culture.

As signatories of AJ Retro-First, it is encouraging to see a greater focus on retrofit in our commissions. Our recently completed project at Hornsey Library has been a trailblazer for this, and we are working on decarbonisation projects for the London Boroughs of Haringey, Richmond and Wandsworth. Our principles ensure that retrofit projects are not a purely technical exercise, we must think about people and places first, and apply our knowledge of social details.



↖
Mapping of key sustainability
concerns in Haringey for the
Education Sites Masterplan

Sustainability in our designs

When we consider sustainability in our designs we will think using the following headings:

Operational Carbon

- Reduction through passive measures of orientation and form
- Fabric first approach to reduce energy demand
- Using on-site renewable technologies
- Measuring against energy use benchmark targets
- Collaboration for better building services

Embodied Carbon

- Build less: Refurb and re-use
- Build light: Consider the building structure
- Build wise: Longevity and local context
- Build low carbon: Review material specifications
- Build for the future: Assess end of life and adaptability
- Build collaboratively: Involve the whole team

Overheating

- Minimise internal heat generation - energy efficient design
- Reduce summer solar gains
- Manage heat through exposed internal thermal mass
- Passive/mechanical ventilation

Biodiversity

- Opportunities for greening
- Relationships with nearby spaces
- Diversity of species and habitats

Air Quality

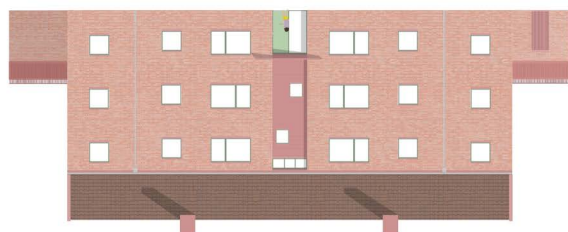
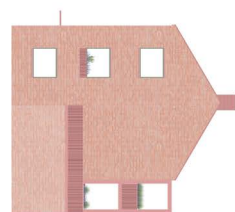
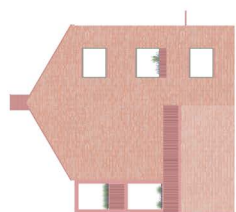
- Increased green space and tree planting
- Location and orientation in relation to sources of pollution
- Encourage active travel
- Coordinate with local authority measures
- Mechanical and passive ventilation strategies

Circular Economy

- Designing components for reuse
- Considering deconstruction rather than demolition
- Re-using existing and recycled components

Travel and Transport

- Design with the pedestrian at heart
- Reducing private car use
- Encouragement for active travel measure



↑
Proposals for 70+ social rent
homes across two sites in
Newport, Wales



A Sustainable Studio

Although we recognise our biggest impact is in the designs we produce, as we move to our new studio, there is the opportunity to improve how we operate more sustainably.

We are constantly improving in this area, from reducing paper and printing use, and conducted our recent office move by bike.

We recently reviewed possible practice accreditation for a net-zero office, including CarbonNeutral and B-Corp. While these are of interest, there are restrictions in place, such as our previous inability to change energy supplier that make such schemes impossible. We will review these schemes in our new space, but overall we still believe that we should focus on our biggest impacts - namely the designs we produce - and expend maximum effort here to fight the climate emergency and respect our planet.

Green focused CPD sessions

Led by Amrit and Archie, we have had great success in furthering knowledge on environmental issues through lunchtime CPD sessions. Our focus will remain on the specification of sustainable materials, passive design and gaining conservation expertise. This will ensure a 'green-thread' runs through everything we do. Some CPDs we have enjoyed included:

- GreenBlue Urban: Trees in the Urban Realm
- Keim Mineral Paints: Healthy Interiors
- Earthblocks: Cob Bricks and Blocks
- Honext: Flame-retardant boards
- LETI Whole Life Carbon Webinar Series
- Max Fordham: Passivhaus
- Lime Green: lime mortars and products
- Bradley Metal Finishers: Corrosion on metalwork
- Airflow UK: Building Regulations for Residential MVHR

The Green Team

Previously our practice had a Green Team to lead on environmental concerns. With an ambition for all to be involved in environmental issues and a green thread to run through everything that we do, this became a part of whole office discussions and meetings, with the media related aspects of the Green Team merging with the Media Team.

Although this has been successful, an ambition to do more prompts consideration of how our discussions are best structured. Options for consideration may be:

- Introduction of a Climate Emergency section into the office meeting
- Re-introducing the Green Team to drive the office-wide agenda. This may be better as a bottom-up initiative
- Timetabling office-wide discussions over certain issues

Our main EMS objective is to bring environmental considerations to the forefront of our projects to be discussed, debated and fully incorporated into our designs. We are open to better ways of doing this and will continue to explore.

Current green affiliations

- Passivhaus Trust
- New London Architecture
- UK Green Building Council
- Alliance for Sustainable Building Products
- Architects Declare
- AJ Retrofirst signatories
- LETI
- ACAN

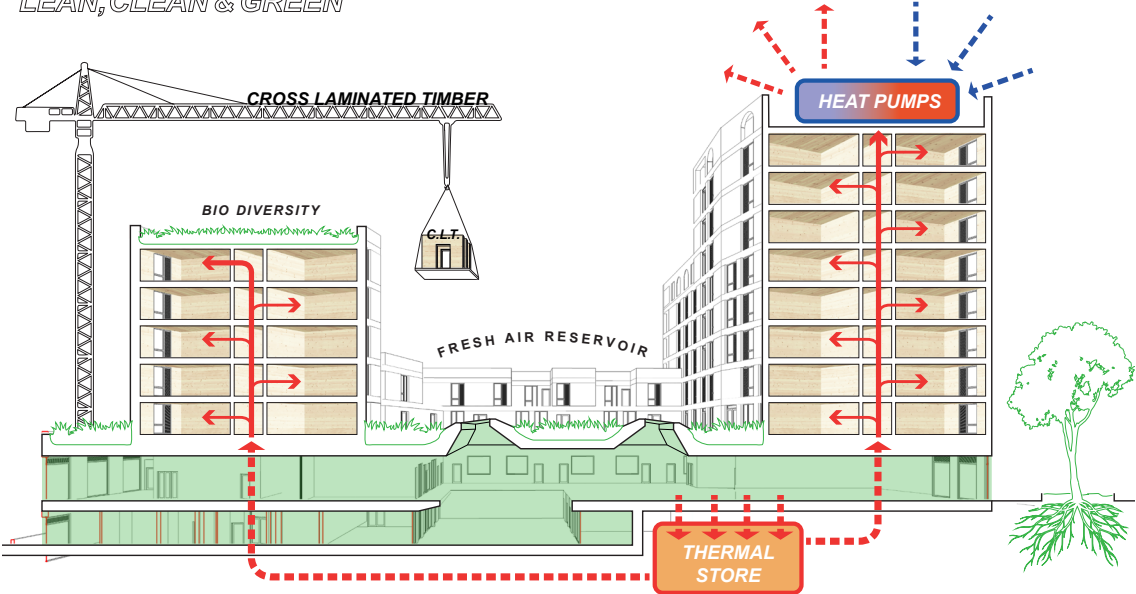
Future Green Team Targets

- Increase understanding of use of natural, breathable materials and their impact when incorporated on existing structures.
- Projects featured as case studies on industry websites including the UKGBC, RIBA sustainability reports and Dezeen.
- A project which meets Passivhaus or EnerPHit standards
- Consider zero-carbon office certification



↑
Green space for residents in
Moreland Gardens central
courtyard

LEAN, CLEAN & GREEN

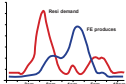


75%
less CO₂ in
Construction



Embodied Energy Saving from CLT
over conventional concrete construction

39%
less CO₂
in Heating



Operational saving via Ambient Loop System
over separate buildings on gas power

78%
Green
Footprint



Extensive gardens give residents 2,200m² outdoor
space promoting healthy living and biodiversity

↑
Section showing the sustainability
credentials at Moreland Gardens,
meeting BREEAM excellent

Environmental Management

We are accredited to ISO 14001 and our Environmental Management system. Led by Frehiwot and Mark, it sets out plans and responsibilities for identifying and addressing our environmental issues.

Our current Environmental Action Plan is below, to be reviewed later this year.

Our Designs

- Ensure focus on environmental issues and policy is maintained throughout projects
- Encourage clients to aspire for better BREEAM ratings
- Environmental Plan for all projects to consider the following: Selection of location, Project brief, Design, Tender, Construction, Operation, Disposal, Enforcement
- Project information sheets to have detailed sustainability information – template has been amended to include further details

Practice

- Increase number of CPDs relating specifically to the environment, not necessary architecturally focused
- Research other resources for environmentally conscious design
- Memberships to sustainability bodies as outlined on Practice Plan
- Develop in-house knowledge of Post-Occupancy Evaluation and BSRIA Soft-Landings
- Encourage knowledge share from staff individual training
- Office environment – check weather forecast for coming months and research a low energy effective air conditioning system
- Working from home update: Energy usage in office has been reduced due to working from home, however individuals use of energy will have increased. Difficult to measure across all staff
- Ensure staff safety

Recycling

- Maintain signage on kitchen bins
- Batteries - Ensure used batteries are recycled. Use recyclable batteries
- Maintain procedures for recycling plotter and printer cartridges.
- Reminder to staff at office meetings about what can be recycled
- Green waste – weigh over period to determine overall quantities
- Maintain use of recycling services for re-usable furniture, computers etc
- Re-use of paper – Key target for this year
- - Booklets to be made from used paper and distributed to staff
- - Monitor paper use quarterly and discuss graph at office meetings

Waste Management

- Ensure printers and staff PCs set to default lowest impact options (B&W, 2 sided etc.) to save energy and monitor improvements on print log.
- Maintain communication re printing emails so one section can be printed rather than the whole email to reduce paper usage
- Maintain communication re avoiding unnecessary printing practices to reduce paper usage and monitor changes.

Energy Conservation

- Research to assess potential alternative energy suppliers.
- Turning off the lights, computers, fans etc when people leave the office to reduce electricity usage
- General awareness/training re stationery, energy conservation etc. travel, meetings to encourage staff to participate and support initiative
- Switching to higher percentage of 'eco-friendly' consumables to increase the positive impact of our recycling scheme and reduce our energy usage
- Monitor %age use of recycled paper; investigate to see whether cheaper in order to promote environmentally friendly printing
- On-going audit of suppliers for their carbon footprint – focus on main suppliers at first
- Staff commute information

Key targets for our designs are to continue to develop our general knowledge of environmental design issues (as outlined within the action plan), sustainable materials and construction methods and of Soft Landings and Post Occupancy.

We do this through a series of seminars in the form of CPD (Continual Professional Development) and Cold Room Talks (Internal Design Forums). For our project work, we monitor our projects environmental performance regularly in the monthly JAMs and at the Stage Reviews in key stages throughout the project.

For projects where the Client is willing to adopt them, we have introduced additional targets relating to our projects. We also use BREEAM to assess the projects impacts and ensure it meets the targets, where BREEAM forms part of the brief.

For our workplace, following an office move in January 2020, key target for the year was paper usage. However, the pandemic and staff having to work from home has been an opportunity in terms of reduction of environmental impact. This also applies to reduction of carbon footprint for staff commute as well as for meetings and site visits.

We believe the new hybrid way of working will continue to improve our environmental impact.



↑
Revitalise Peckham Rye, a CLT
pavilion in a park setting



↑
Alfretton Park Community Special
School, now on site

Empowering everyone an inclusive endeavour

A Leader-Leader Practice

Our management approach is that of a Leader/Leader practice - Empowering everyone thus creating the conditions for us to become increasingly effective, and to help us realize our full capacity and power.

The Leadership Council - formed as a direct outcome of this approach to empower everyone, progresses in its varied role with 3 key objectives: to promote opportunities for the practice and its staff, to develop an inclusive practice and act as advocates and ambassadors for the practice. The Leadership Council is formed of Associate Director Frehiwot, Associate Esme and Senior Architect Mark. Talented designer Marianne Christiansen, who has significant experience in practice and teaching in London, is also part the council.

We continue to be very proud of our team of Architects and Architectural Assistants as they continue their training and take on varied roles within the practice.

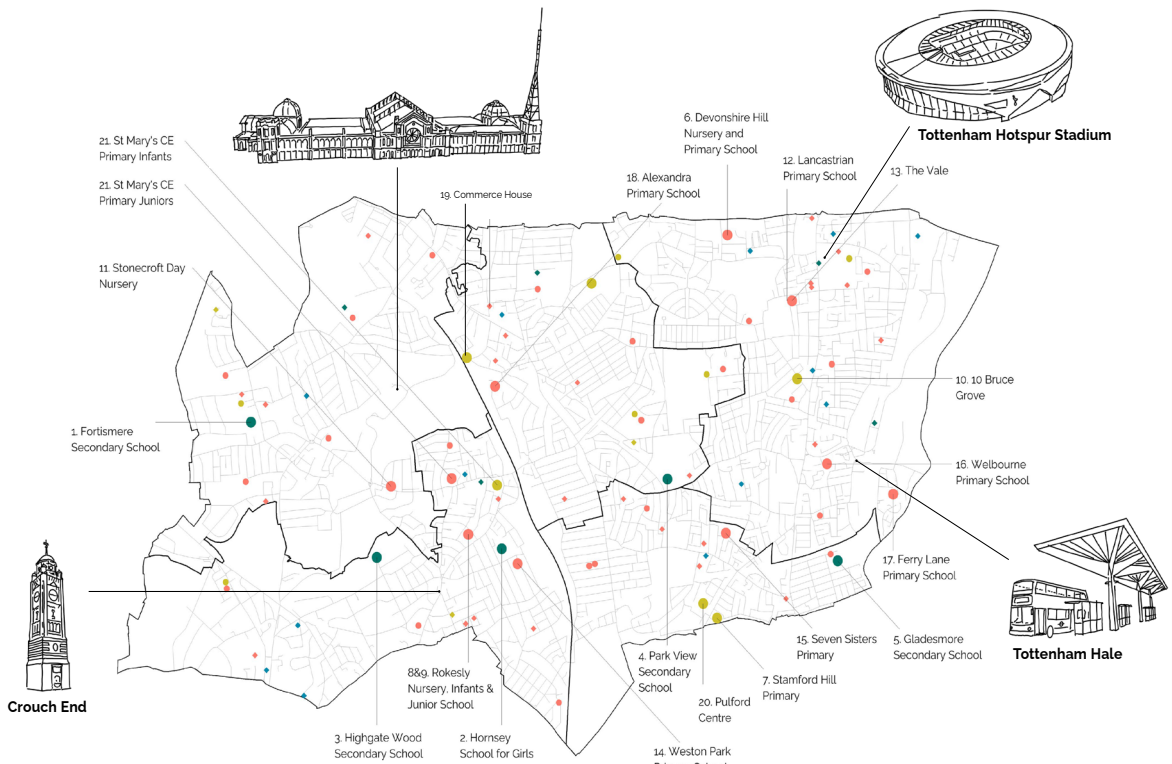
Our team of expert consultants are very much a part of our strong sectoral knowledge in a variety of specialist areas. These correspond directly to where we see opportunities for new work and strengthening our existing areas of expertise and contacts as well as equipping us to make better quality decisions, be motivated to take appropriate accountability for getting results and driving projects and our personal development forward.

Sarah Curl continues to support the practice as a Senior Consultant. She focuses particularly on new business and client liaison in the education sector following her strong leadership and history of award winning education design. She is a certified Passivhaus Designer and takes a keen interest in the practice's Social Value, Diversity and Equalities strategies and design for Special Education Needs and Disabilities.

Aktar Choudhury has been consulting with the practice particularly on business development and bidding for new work. He has 20 years experience in local government leadership roles and will continue to give expert advice and share contacts for public sector work.

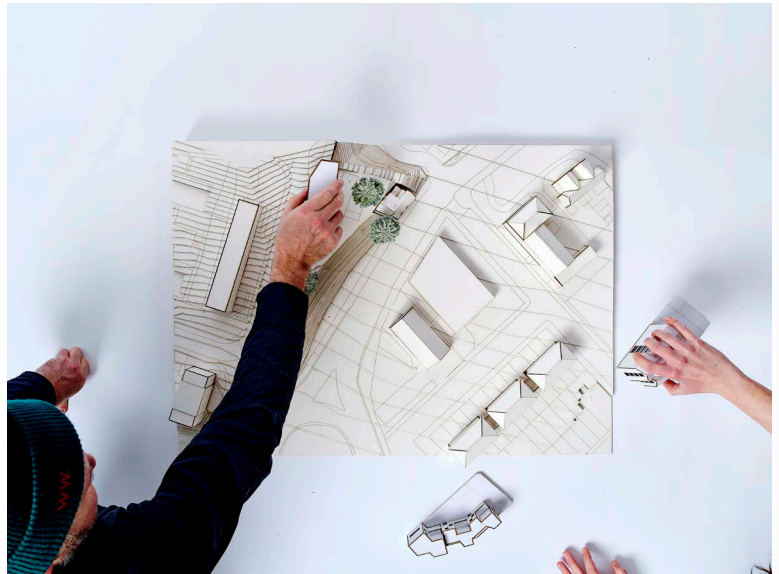
An expert architectural historian, Dr Manolo Guerri is a consultant to Curl la Tourelle Head Architecture on matters of conservation and heritage. Manolo is a senior lecturer at the Kent School of Architecture and has particular expertise on the principles and philosophies of conservation, construction processes and building techniques. We are seeing more conservation opportunities arise and Manolo's expertise will prove a valuable asset.

Paulo Pimentel has joined us as an expert consultant in the design of exhibitions, museums, visitor attractions and the integration of digital technology and architecture. He has a 22 year career spanning multiple project types and sectors including brand experiences, museums, visitor attractions, innovation centres, exhibitions and events.



↑
London Borough of Haringey,
borough wide masterplanning
across 21 education sites

↓
Military Road, Dover: new housing
on prominent site with a new
client Dover District Council



The formal Leadership Council includes the following roles:

Performance Leadership - Wayne + Marianne

Strategy Leadership - Wayne + Esme

Standards Leadership - Peter + Mark

People / Facilitation Leadership - Frehiwot + Mark

Design Leadership - Wayne + Marianne

A clear management group is a good structure for the practice to frame its activities. The management group forms a Leadership Council which is chaired for the immediate future by Wayne.

We are well aware of the high level of potential within the group. Esme and Mark have been playing active roles in the Leadership Council.

Our young Architects, supported and mentored by the leadership council and technical consultants have been developing their skills to take on these job running opportunities. Architect Archie now leads Windmill SEND School and Carlisle Library projects currently on site and Architect Amrit has taken a key role managing the Ramsgate Harbourside Heritage projects.

Performance Leadership - (Chief Financial Officer)

Marianne is leading this role which is clearly a role that informs the Strategy Leader's decision making and it feeds into the practice's management of risk. The role also promotes one of the most important areas of continuous improvement of our people - their ability to manage projects profitably. As such, it collaborates with the work of the next core member of the Leadership Committee.

Strategy Leadership

Wayne's role as Strategy Leader embraces the opening up of new spheres of commercial activity and new sources of income. In the last 18 months this includes; engagement with London Borough of Haringey's borough wide masterplanning exercise and decarbonisation strategies, London Borough of Brent's Children's and Young Persons Service on a life skills centre for their care leavers as well as housing for Dover District Council on a prominent site.

Standards Leadership

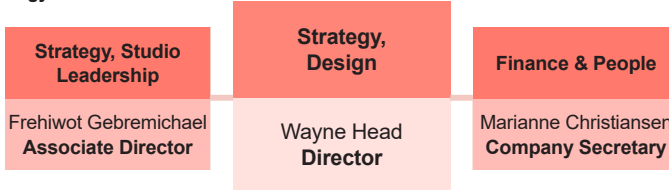
A major part of architectural practice is to maintain professional standards and design quality expectations. Mark takes on this role assisting people to perform and follow best practice and he will continue to do so, with support from both Peter and Lesley, both of whom have extensive technical knowledge. Together they will continue to review standards and spread this knowledge around the practice. Professional standards should be seen as another step towards the practice's success, helping us all to excel.

People / Facilitation Leadership

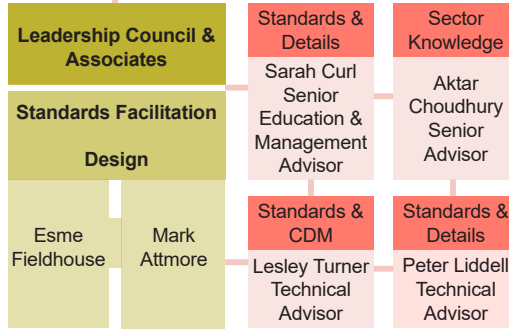
Wayne and Marianne will jointly lead on the technical aspects of this role and Frehiwot on the people aspects with the aim mentoring,

High Quality Design Through Commitment

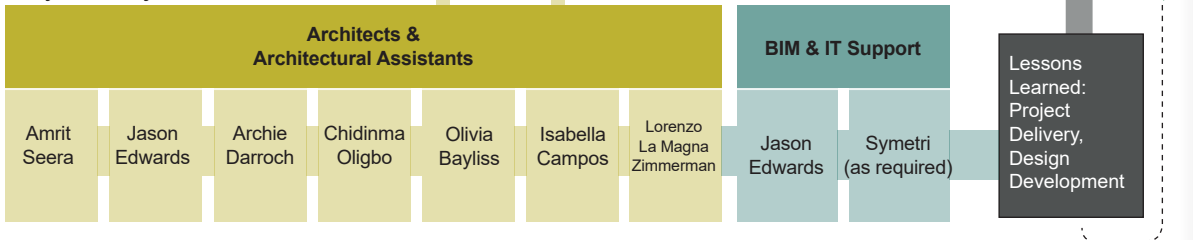
Direction and Strategy



Management Group



Project Delivery



* Leadership Structure Updated May 2023

motivating and developing the skills of our young architect group.

As a group we continue to learn, develop and gain qualifications. Archie joins Amrit within our qualified Architects' group. Jason continues their studies towards becoming qualified Architects alongside their project responsibilities. Wayne has completed his MSc in Conservation. Mark, Amrit and Archie will soon be starting their certified Passivhaus Designer course.

A key aspect of People Leadership is thinking about who we are and how we work together, there is a strong desire amongst the management group to encourage a culture of participation and inclusion. Taking in to account the profession's lack of diversity as a whole we will need to embrace radical approaches and encourage all team members to promote diversity and allow the culture to shift towards a participative model.

We have been doing this through changes in our recruitment practices, empowering our young group to take on leadership roles in practice-wide activities, active involvement with communities in disadvantaged areas both in delivery of our project as well as our social value endeavours.

We are putting in place processes that will enable us to attract and retain diverse talent.

Design Leadership

Wayne leads the design strategy for the practice and he will continually promote design ambition and the delivery of high quality design through committed input across work stages.

Core Sector Leadership

With the recent renewal of the DfE Construction Framework and it's School Rebuilding Programme, we are seeing work in the education sector starting to pick up again. We are currently active across several feasibility studies for these DfE funded schools with Arcadis and have plans to get involved with contractors on the framework for the delivery stages. The sector remains key to CLTH but we also continue to focus on other areas where we have recently seen successful commissions, for example Conservation where Wayne is on the RIBA Conservation Registrant list and specialisms alongside Dr Manolo Guerri.

The public housing sector is of particular interest to the practice and our award winning work on Morland Gardens, Sutton Housing and Newport City Homes shows that we are at the forefront of this sector. We aim to keep the momentum going both through delivering quality projects for current clients and internal team development.



↑
Sutton Social Housing,
photography by Kilian O'Sullivan



Awards

Hornsey Library, Heritage, Shortlisted
RIBA London Award 2023
Inspire Future Generations Awards 2022
The Art of Inhabitation, Diversity in Action, Winner
Haringey Design Awards 2021
Hornsey Library, Better Building Standards, Winner
Haringey Design Awards 2021
Hornsey Library, Heritage, Shortlisted
Haringey Design Awards 2021
Hornsey Library, Inclusive Design, Shortlisted
Archiboo Awards 2021
Best Overall, Shortlisted
Archiboo Awards 2021
Best Visual Design, Shortlisted
Archiboo Awards 2021
Best User Experience, Shortlisted
Architect of the Year Awards 2021
Public Building Architect of the Year, Finalist
AJ Retrofit Awards 2021
Hornsey Library, Cultural and Religious Buildings, Shortlisted
Planning Awards 2020
Morland Gardens, Mixed Use Development, Winner
NLA Awards 2020
Morland Gardens, Mixing Category, Shortlisted
RIBA Rethink: 2025
Pop-up Schools, Longlisted
RICS Social Impact Awards 2020
Lexden Springs School, Education, East, Winner
NLA Awards 2019
Whitehall Museum, Conservation & Retrofit, Shortlisted
RIBA Awards 2019
Whitehall Museum, London Region, Shortlisted
NLA Awards 2019
Revitalise Peckham Rye, Culture, Commended
Civic Trust AABC Conservation Awards 2018
Whitehall Museum, Regional Finalist
Blueprint Awards 2018
Peckham Rye, Best Public Use Project With Public Funding, Highly Commended
AJ Architecture Awards 2018
Revitalise Peckham Rye Project, Public Building of the Year, Shortlisted
AJ Retrofit Awards 2018
Whitehall Museum, Cultural and Listed Buildings, Shortlisted
Structural Timber Awards 2018
Revitalise Peckham Rye, Architect of the Year, Shortlisted

Press Coverage and Publications

04.04.23, Architects' Journal
Curl la Tourelle Head submits plans for Newport council estate

06.03.23, Architects' Journal
First Look: Curl la Tourelle Head completes Sutton social housing

29.11.22, Architects' Journal
Curl la Tourelle Head wins Carlisle Library revamp competition by Merlin Fulcher

27.09.22, AJ Specification
Case study: Alfreton Park SEN School by Curl la Tourelle Head Architecture

04.02.22, RIBA
Pop-up shelters aim to improve refugee experience by Stephen Cousins

22.10.21, FX Magazine
Top of the class by Veronica Simpson

05.10.21, Architects' Journal
Adjaye and Mangera Yvars among firms picked in Southwark framework diversity refresh by Merlin Fulcher

06.04.21, RIBA
Curl la Tourelle Head makes 60s library swing again by Elain Harwood

01.03.21, Building Design
Rethinking Design: How can we prepare schools for another pandemic?
by Jordan Marshall

28.01.21, Architects' Journal
AJ Retrofit Awards 2021 shortlist revealed: Cultural and Religious Buildings, Schools and Health by Fran Williams and Rob Wilson

25.01.21, World Architecture News
Curl la Tourelle Head Architecture receives consent for Morland Gardens scheme by Georgina Johnston

24.11.20, ArchDaily
A Greenhouse City on Mars and a Dockside Tower in Dublin: 8 Unbuilt Projects Submitted by our Readers by Eric Baldwin

23.09.20, NLA
Zero Carbon London by New London Architecture

19.09.20, Open City
Whitehall Historic House by Open City

27.08.20, ArchDaily
Curl la Tourelle Head Designs 100% Social Housing Scheme in the London Borough of Brent by Christele Harrouk

20.08.20, Building
Brent green lights £43m social housing project near Wembley stadium by Elizabeth Hopkirk

19.08.20, Building Design
Curl la Tourelle Head's £43m social housing and workspace project approved by Elizabeth Hopkirk

Arts & Public



The Clock House Ramsgate



Dover College Performing Arts Theatre

Public Library and Archive



Herne Bay King's Hall



Carlisle Library



Muswell Hill Library



Highgate Library



Whitehall Museum



Hill House



Brooklands Park



Hornsey Library



Occupation Road Artist Studios



Russett's Registry Office



Sondheim Theatre



Novello Theatre



Tenderpixel Gallery



Great Yarmouth Market



Revitalise Peckham Rye



Shinfield Community Centre



Creative Hub Margate



Geranium Shop



Barbican Library



Big House for the Arts

Conservation



Wanstone Court



Herne Bay Central Bandstand



Muswell Hill Library



Barbican Old Police Station



Decarbonisation of Churches



Whitehall Museum



St Michael's Church for Samuel Taylor Coleridge Trust



Hill House



Silver Street



Conservation in action



Hornsey Library



Museum Building



The Grove



Barbican Flat



Occupation Road Artist Studios



Russett's Registry Office



Sondheim Theatre



Gielgud Theatre



Novello Theatre



Wyndham's Theatre



Prince Edward Theatre



Fitzjohn's Primary School



Barbican Turret

Housing



Teviot Avenue



Repurposing a Petrol Station Site



New Social Housing



Military Road Housing for the Homeless



Newport Housing Retrofit



Newport Housing Rebuild



Morland Gardens



Sutton Large Sites



Sutton Social Housing Medium



Sutton New Social Housing - Small Sites



Staple's Corner



Highway Code



Islington Social Housing



Isleden House



The Grove



Stratford High Street



Wolverhampton Public Sector Hub



Barbican Flat



Stonebridge Social Housing

Learning



Haringey Net Zero Schools



Carlton and Rhyl Primary School



Alferton Park SEN School



Independent School, Harrow



Pop-up Schools



Kidbrooke Park School



Lexden Springs SEND School



Lyington Fields School



Argyle Primary School STEAM



Wanstead High School



Thames Tidal School



Fitzjohn's Primary School



East Lane Primary School



Ryelands Primary Academy



Wimbledon Park Primary School



Priory SEND School



Perseid SEN School



St Michael's High School



Holy Trinity Primary School



Acacia Intergenerational Centre



Carshalton Boys Sports College



St Mary Magdalen's Junior School



Carshalton High School

Tertiary Education



Brent Start



Trinity College Dublin



Wolverhampton Public Sector Hub



Beckmead College



UCL Student Gateway



Big House for the Arts



Indian Institute of Technology Campus

Healthcare



Derriford Care Centre



Homerton Alzheimer's Village



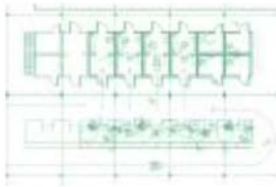
Wolverhampton Public Sector Hub



Seven Kings Health Hub



Mary Seacole Nursing Home



Pop-up Healthcare

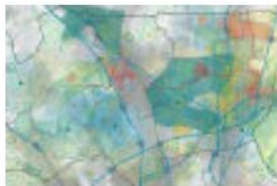
Masterplanning



Pier Yard Ramsgate



Gordon Brown Centre Masterplan



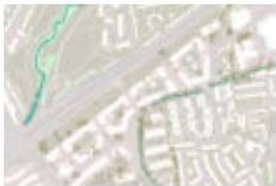
Haringey Education Sites Masterplan



Richmond & Wandsworth
Decarbonisation



Welsh Harp Urban Farm



Estate Regeneration



Kensington & Chelsea Social Housing



Pop-up High Streets



Islington Masterplanning



Broad Street Masterplanning



Dungeness & Shepway Masterplanning



Great Yarmouth Market

Curl la Tourelle Head

Podium Level

Shakespeare Tower

Barbican

London EC2Y 8DR

+44 (0)20 7267 0055

mail@clth.co.uk

Instagram: cltharchitecture

Pinterest: @CLTHArchitecture