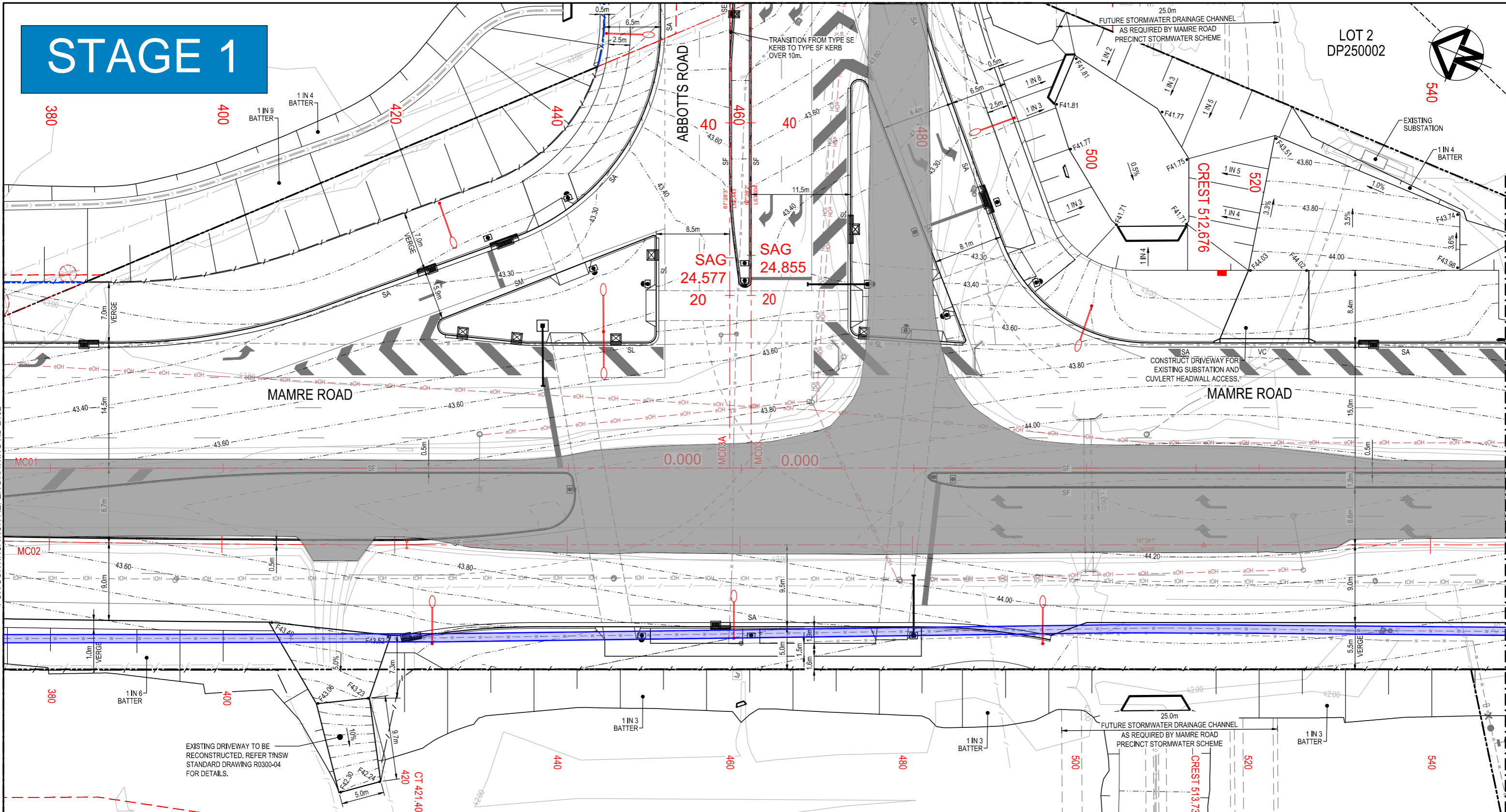
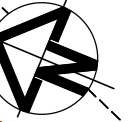


STAGE 1

LOT 2
DP250002








FOR CONTINUATION REFER DRAWING RD-2102

FOR CONTINUATION REFER DRAWING RD-2104

NOTES

Existing pavement extents shown

	EXISTING PAVEMENT
	TEMPORARY PAVEMENT
	UNDER CONSTRUCTION
	COMPLETED PERMANENT PAVEMENT
	CONCRETE BARRIERS

EXISTING DRIVEWAY TO BE RECONSTRUCTED. REFER TNSW STANDARD DRAWING R0300-04 FOR DETAILS.

FUTURE STORMWATER DRAINAGE CHANNEL AS REQUIRED BY MAMRE ROAD PRECINCT STORMWATER SCHEME

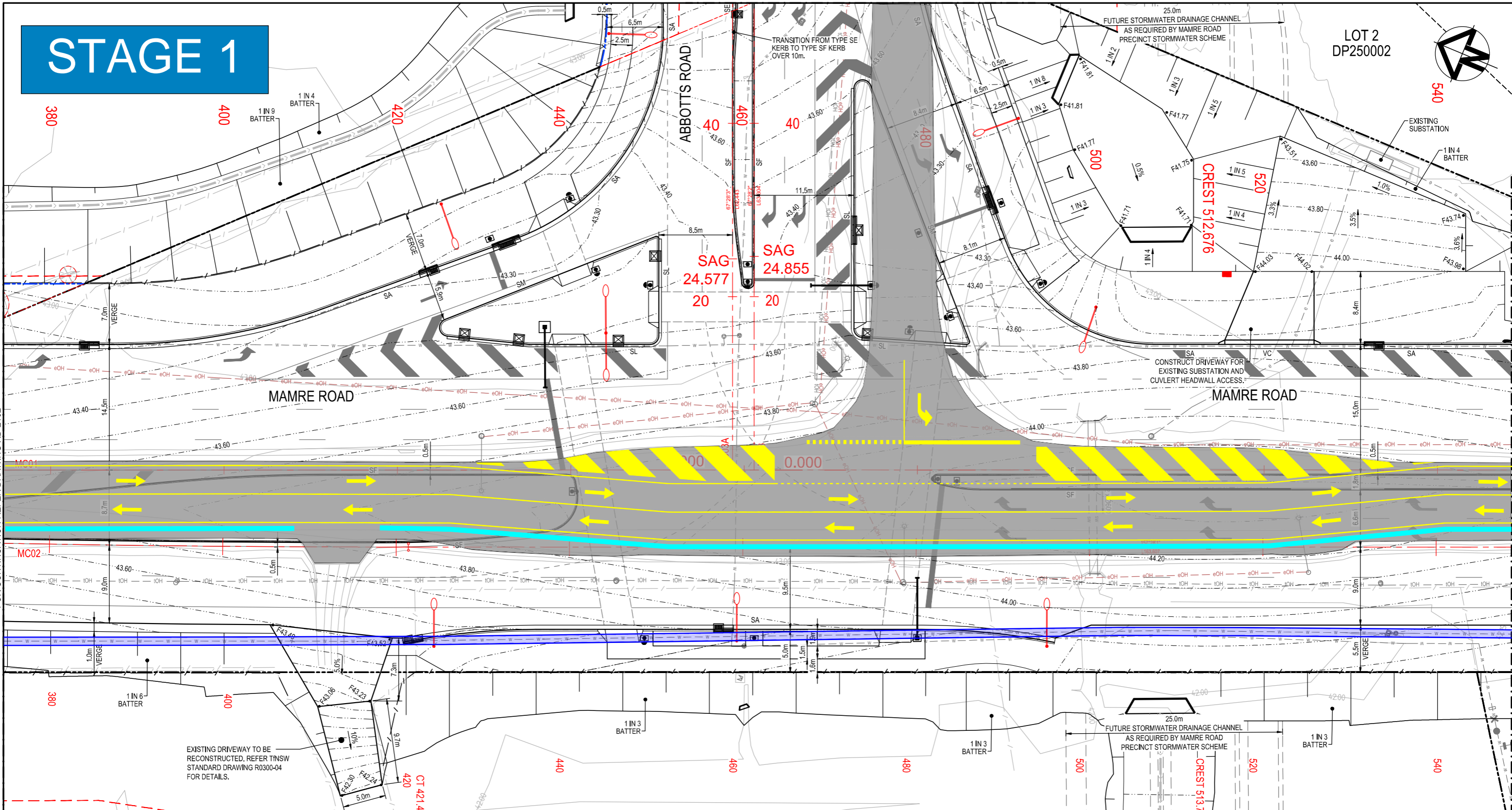
CREST 513.734

CREST 512.676

SAG 24.577
SAG 24.855

STAGE 1

LOT 2
DP250002



FOR CONTINUATION REFER DRAWING RD-2102

FOR CONTINUATION REFER DRAWING RD-2104

NOTES

- Deploy barriers on west side of Mamre Rd
- Adjust line-marking as shown
- No right turns at intersection in this phase

	EXISTING PAVEMENT
	TEMPORARY PAVEMENT
	UNDER CONSTRUCTION
	COMPLETED PERMANENT PAVEMENT
	CONCRETE BARRIERS

EXISTING DRIVEWAY TO BE RECONSTRUCTED. REFER TNSW STANDARD DRAWING R0300-04 FOR DETAILS.

25.0m
FUTURE STORMWATER DRAINAGE CHANNEL
AS REQUIRED BY MAMRE ROAD
PRECINCT STORMWATER SCHEME

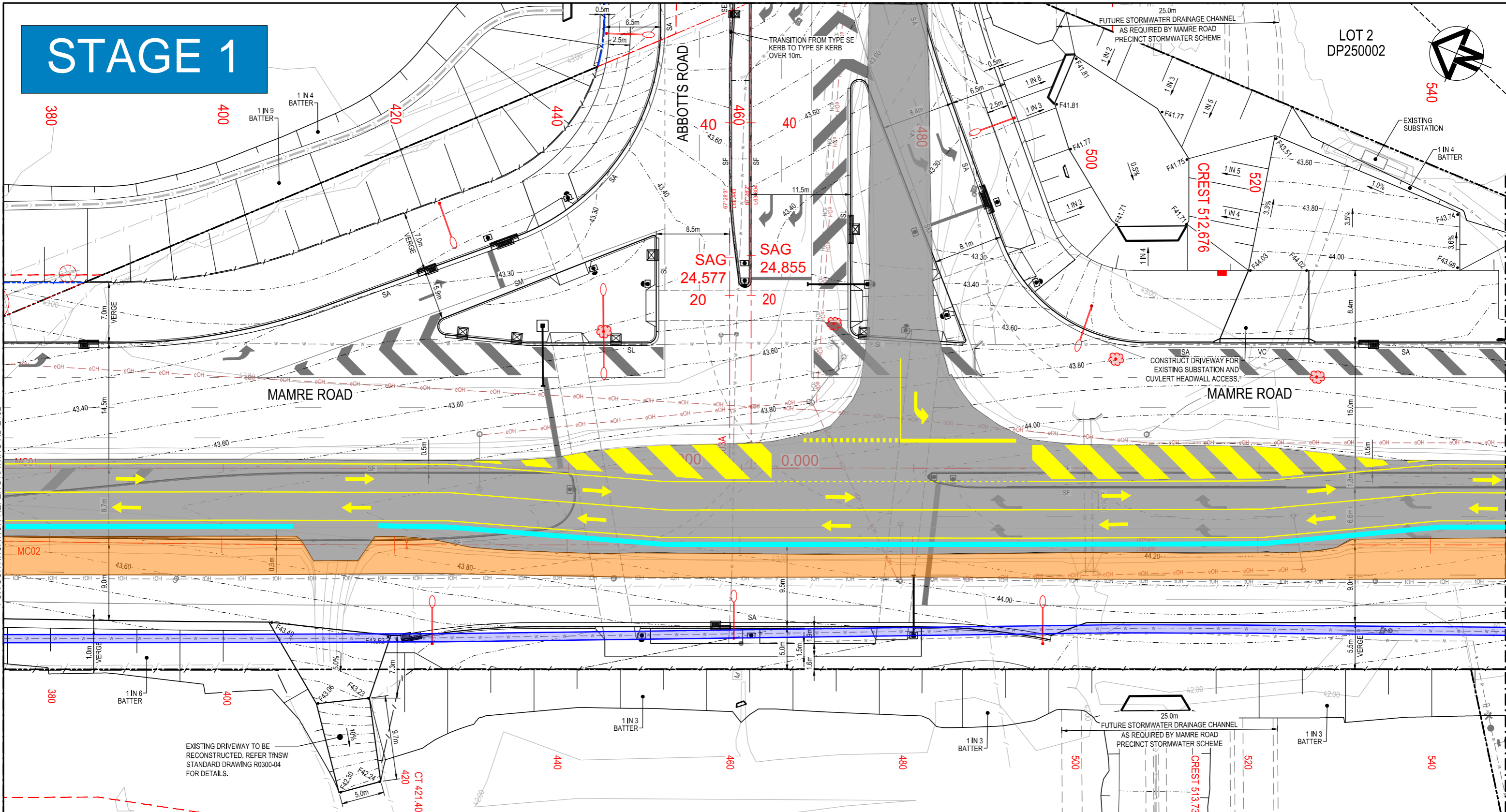
CREST 512.676

CREST 513.734

SAG 24.577
SAG 24.855

STAGE 1

LOT 2
DP250002








FOR CONTINUATION REFER DRAWING RD-2102

FOR CONTINUATION REFER DRAWING RD-2104

NOTES

Construct temporary pavement on west

-  EXISTING PAVEMENT
-  TEMPORARY PAVEMENT
-  UNDER CONSTRUCTION
-  COMPLETED PERMANENT PAVEMENT
-  CONCRETE BARRIERS

EXISTING DRIVEWAY TO BE RECONSTRUCTED. REFER TNSW STANDARD DRAWING R0300-04 FOR DETAILS.

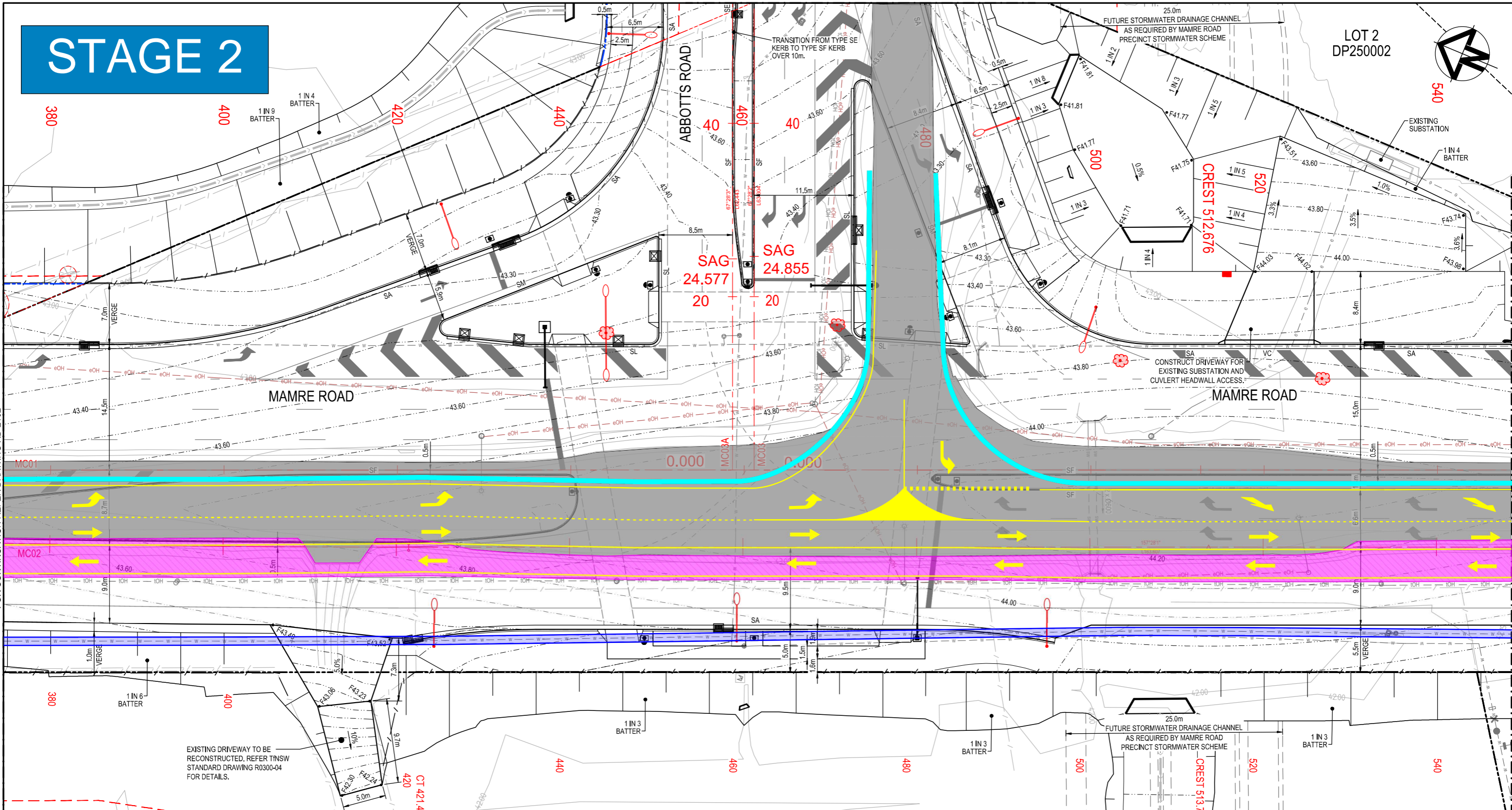
FUTURE STORMWATER DRAINAGE CHANNEL AS REQUIRED BY MAMRE ROAD PRECINCT STORMWATER SCHEME

CREST 512.676

CREST 513.734






STAGE 2

LOT 2
DP250002



NOTES

Shift traffic west onto the temp. pavement
 Deploy barriers onto the east side
 No right turns at intersection in this phase

-  EXISTING PAVEMENT
-  TEMPORARY PAVEMENT
-  UNDER CONSTRUCTION
-  COMPLETED PERMANENT PAVEMENT
-  CONCRETE BARRIERS

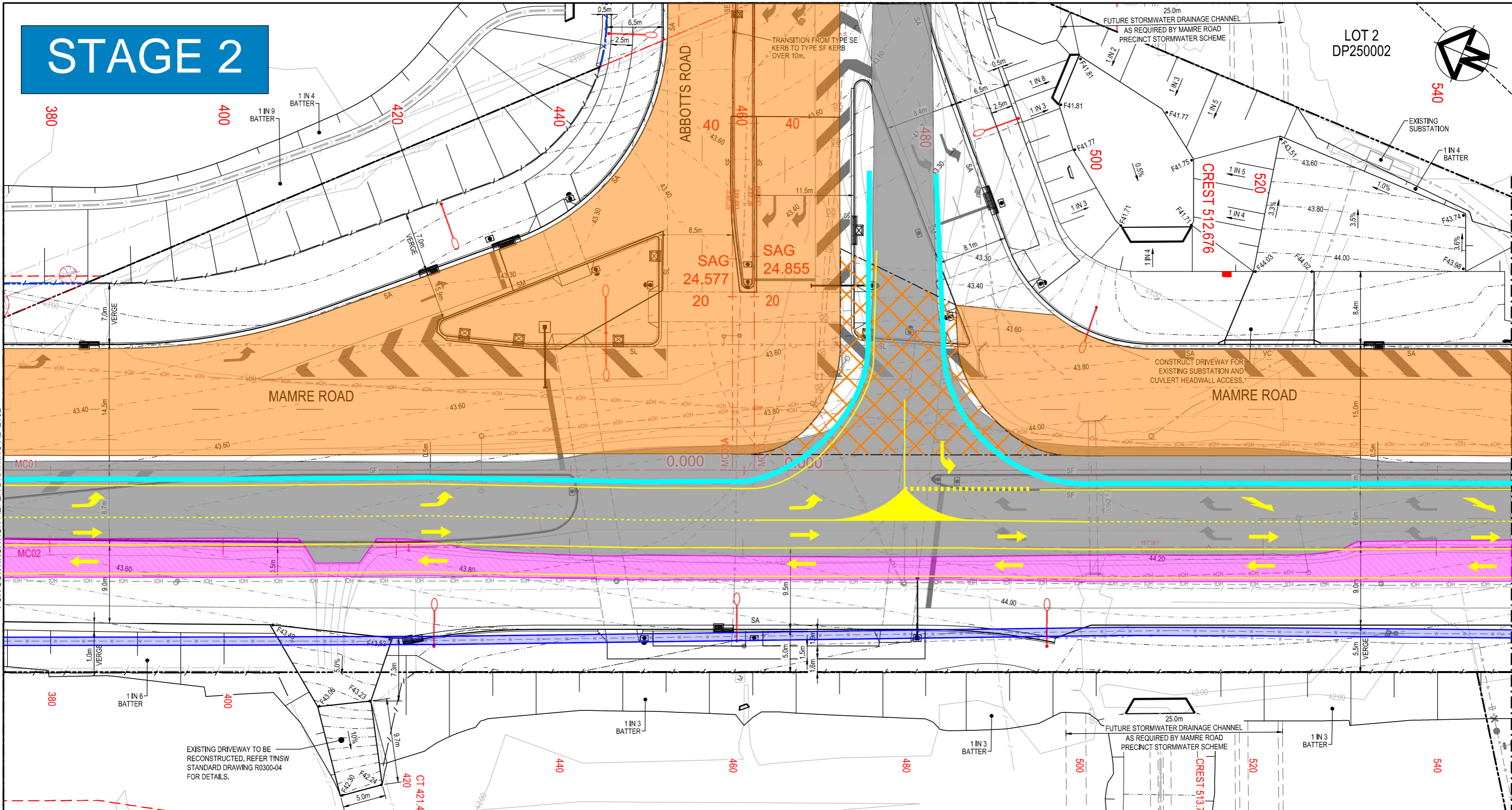
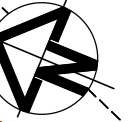
EXISTING DRIVEWAY TO BE RECONSTRUCTED. REFER TNSW STANDARD DRAWING R0300-04 FOR DETAILS.

FOR CONTINUATION REFER DRAWING RD-2102

FOR CONTINUATION REFER DRAWING RD-2104


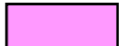



STAGE 2

LOT 2
DP250002



NOTES

Construct permanent pavement on east
 Portion through Abbotts done on night shift
 Pavement is temporary through island areas
 Traffic signals for Stage 3 get constructed

-  EXISTING PAVEMENT
-  TEMPORARY PAVEMENT
-  UNDER CONSTRUCTION
-  COMPLETED PERMANENT PAVEMENT
-  CONCRETE BARRIERS

EXISTING DRIVEWAY TO BE
 RECONSTRUCTED, REFER TNSW
 STANDARD DRAWING R0300-04
 FOR DETAILS.

FOR CONTINUATION REFER DRAWING RD-2102

FOR CONTINUATION REFER DRAWING RD-2104

STAGE 3


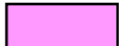



LOT 2
DP250002



FOR CONTINUATION REFER DRAWING RD-2102

FOR CONTINUATION REFER DRAWING RD-2104

NOTES
 Shift traffic east onto the permanent pavement
 Deploy barriers on west side of new pavement
 Traffic signals in operation from this point
 Right turns are enabled

-  EXISTING PAVEMENT
-  TEMPORARY PAVEMENT
-  UNDER CONSTRUCTION
-  COMPLETED PERMANENT PAVEMENT
-  CONCRETE BARRIERS

EXISTING DRIVEWAY TO BE RECONSTRUCTED. REFER TNSW STANDARD DRAWING R0300-04 FOR DETAILS.

FUTURE STORMWATER DRAINAGE CHANNEL AS REQUIRED BY MAMRE ROAD PRECINCT STORMWATER SCHEME

TRANSITION FROM TYPE SE KERB TO TYPE SF KERB OVER 10m.

EXISTING SUBSTATION

STAGE 3

LOT 2
DP250002



NOTES

Construct permanent pavement on east
Complete pavement on south side of Abbotts

- EXISTING PAVEMENT
- TEMPORARY PAVEMENT
- UNDER CONSTRUCTION
- COMPLETED PERMANENT PAVEMENT
- CONCRETE BARRIERS

EXISTING DRIVEWAY TO BE
RECONSTRUCTED. REFER TNSW
STANDARD DRAWING R0300-04
FOR DETAILS.

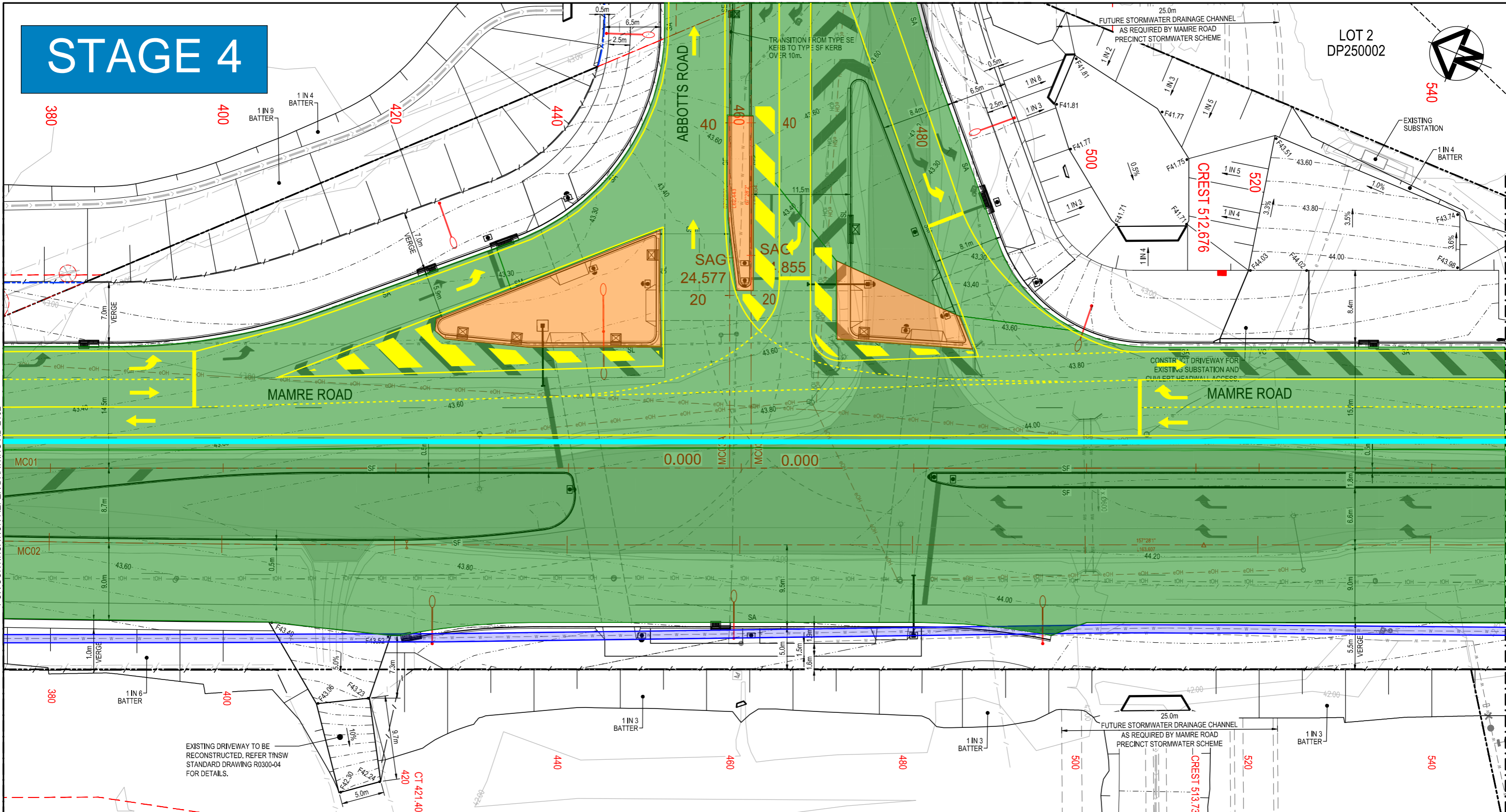
25.0m
FUTURE STORMWATER DRAINAGE CHANNEL
AS REQUIRED BY MAMRE ROAD
PRECINCT STORMWATER SCHEME

FOR CONTINUATION REFER DRAWING RD-2102

FOR CONTINUATION REFER DRAWING RD-2108

STAGE 4

LOT 2
DP250002


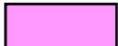





FOR CONTINUATION REFER DRAWING RD-2102

FOR CONTINUATION REFER DRAWING RD-2104

NOTES

Switch traffic exiting Abbotts south onto the newly constructed permanent pavement
 Complete islands in intersection on night shift

-  EXISTING PAVEMENT
-  TEMPORARY PAVEMENT
-  UNDER CONSTRUCTION
-  COMPLETED PERMANENT PAVEMENT
-  CONCRETE BARRIERS

EXISTING DRIVEWAY TO BE RECONSTRUCTED. REFER TNSW STANDARD DRAWING R0300-04 FOR DETAILS.

25.0m
 FUTURE STORMWATER DRAINAGE CHANNEL
 AS REQUIRED BY MAMRE ROAD PRECINCT STORMWATER SCHEME

540

CREST 512.676

CREST 513.734

540