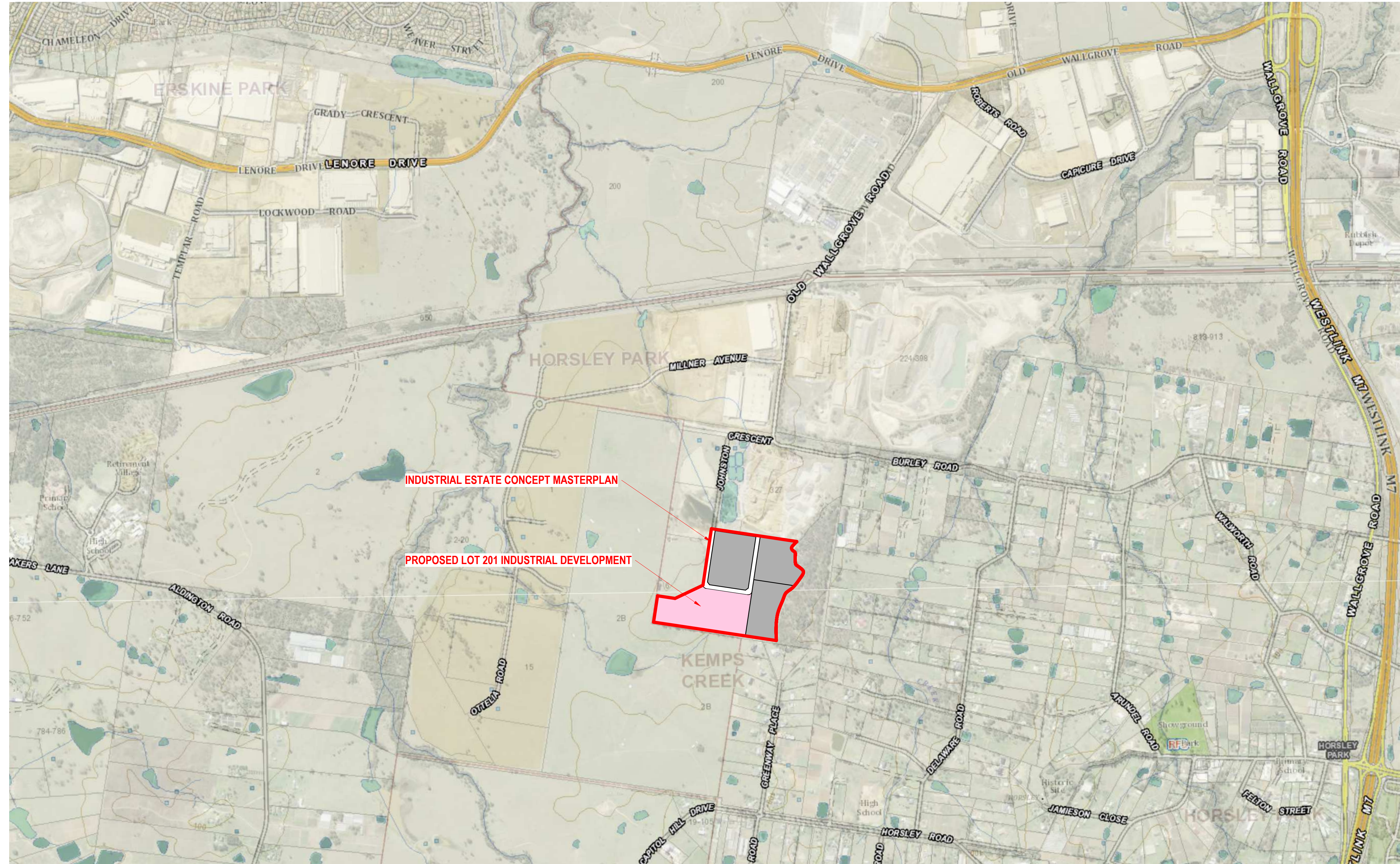


# PROPOSED INDUSTRIAL ESTATE & WAREHOUSE FACILITY DEVELOPMENT

Proposed Lot 201 of Lot 103 in DP1214912 of 327-335 Burley Road  
HORSLEY PARK, NSW 2175



Drg. No.	Sheet Name	Rev
200226-DA-201-A000	LOT 201 TITLE SHEET & DRAWING LIST	B
200226-DA-201-A100	LOT 201 SITE & FACILITY PLAN	B
200226-DA-201-A110	LOT 201 OFFICE PLANS	B
200226-DA-201-A200	LOT 201 WAREHOUSE ELEVATIONS	B
200226-DA-201-A201	LOT 201 OFFICE ELEVATIONS	B
200226-DA-201-A210	LOT 201 WAREHOUSE SECTIONS	B
200226-DA-201-A500	LOT 201 ARTIST IMPRESSIONS	A

DEVELOPMENT APPLICATION

22/06/2024 4:52 PM BIM 360://ESR\_Horsley\_Logistics\_Park/Burley\_Rd\_detached.rvt



PROJECT MANAGER

PROJECT ESR HORSLEY LOGISTIC PARK  
ADDRESS 327-335 BURLEY ROAD  
HORSLEY PARK NSW  
PROJECT NUMBER 200226

Rev	Description	Date
A	DA Issue	30.03.20
B	Development Application Issue	22.06.20

HL Architects Pty Ltd. This drawing is confidential and is subject to copyright. It may not be copied, used, reproduced or transmitted in any way or in any form without the express permission of HL Architects Pty Ltd.  
General Notes:  
Architectural drawings to be read in conjunction with all other consultants' detailed drawings, specifications & reports.  
Do not scale this drawing. Verify all dimensions on site.  
Refer all discrepancies to H.A. before commencing any work.

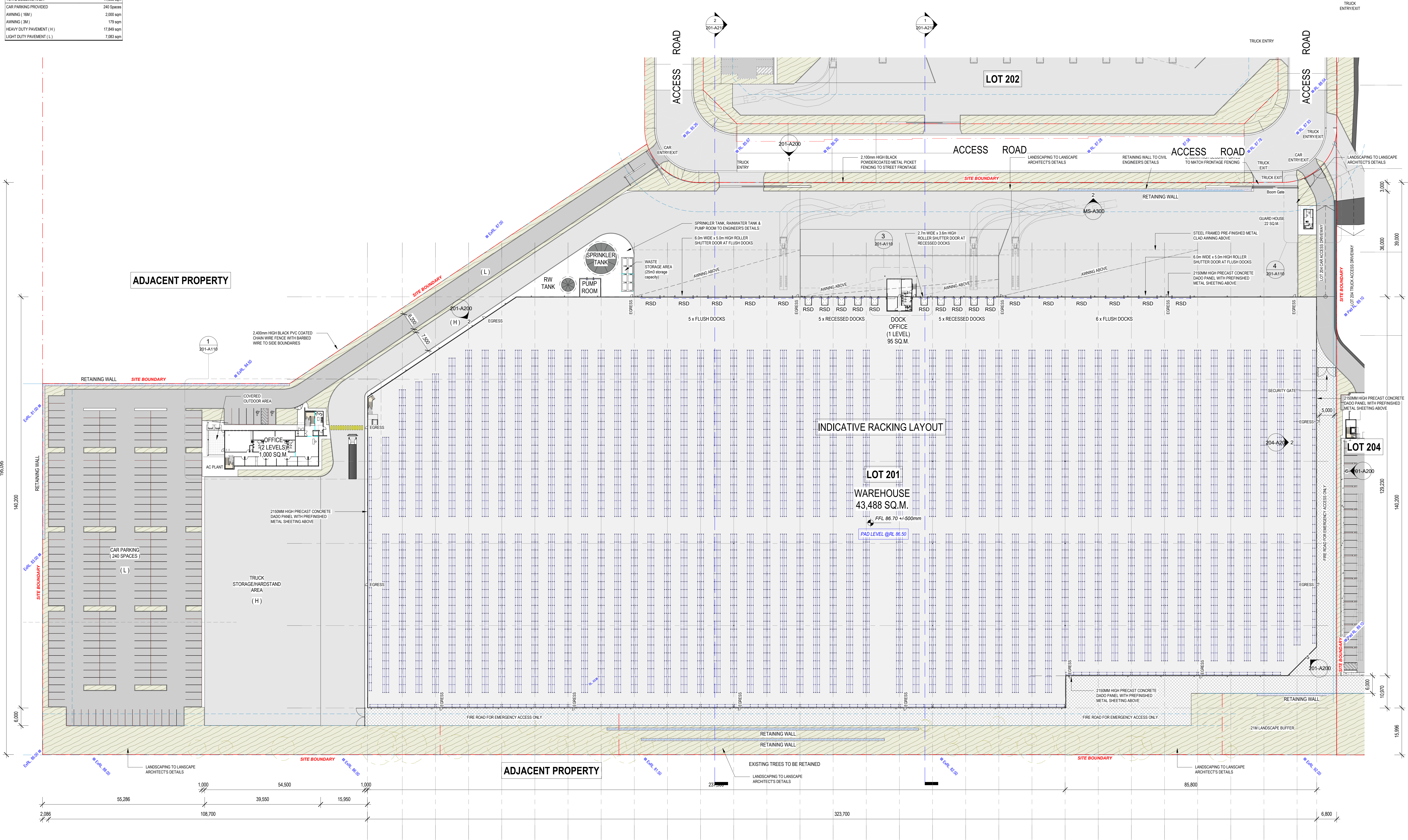
HL Architects Pty Ltd A.C.N. 161 638 320  
nominated architect: Koi Hong Lau  
(Reg No. NSW #1559, QLD #6203, TAS #1101)  
e admin@hlarchitects.com.au  
t 02 9191 9942  
m 0424 160 365  
www.hlarchitects.com.au  
Suite 51, 6 George St, North Strathfield NSW 2137



DRAWING TITLE LOT 201 TITLE SHEET & DRAWING LIST  
DRAWING NUMBER 200226 - DA - 201-A000

DRWN AB  
CHK HL  
ISSUE B

DEVELOPMENT SUMMARY (LOT 201)	
SITE AREA	77,890 sqm
EFFICIENCY	57.86%
WAREHOUSE	43,488 sqm
MAN OFFICE (2 Levels)	1,000 sqm
DOCK OFFICE (1 Level)	95 sqm
GUARD HOUSE	22 sqm
TOTAL BUILDING AREA	44,605 sqm
CAR PARKING PROVIDED	240 Spaces
AWNING (10M)	2,300 sqm
AWNING (3M)	170 sqm
HEAVY DUTY PAVEMENT (H)	17,849 sqm
LIGHT DUTY PAVEMENT (L)	7,083 sqm



ADJACENT PROPERTY

INDICATIVE RACKING LAYOUT

LOT 201  
WAREHOUSE  
43,488 SQ.M.

LOT 204

ADJACENT PROPERTY

1 Site Facilities Plan (Lot 201)



PROJECT: ESR HORSLEY LOGISTIC PARK  
ADDRESS: 327-335 BURLEY ROAD, HORSLEY PARK NSW  
PROJECT NUMBER: 200226

Rev	Description	Date
A	DA Issue	30.03.20
B	Development Application Issue	22.06.20

HL Architects Pty Ltd. This drawing is confidential and is subject to copyright. It may not be copied, used, reproduced or transmitted in any way or in any form without the express permission of HL Architects Pty Ltd.

General Notes:  
Architectural drawings to be read in conjunction with all other consultants' detailed drawings, specifications & reports.  
Do not scale this drawing. Verify all dimensions on site.  
Refer all discrepancies to HLA before commencing any work.

HL Architects Pty Ltd A.C.N. 161 638 320  
nominated architect: Koi Hong LAU  
(Reg No. NSW #1559, QLD #6020, TAS #1101)

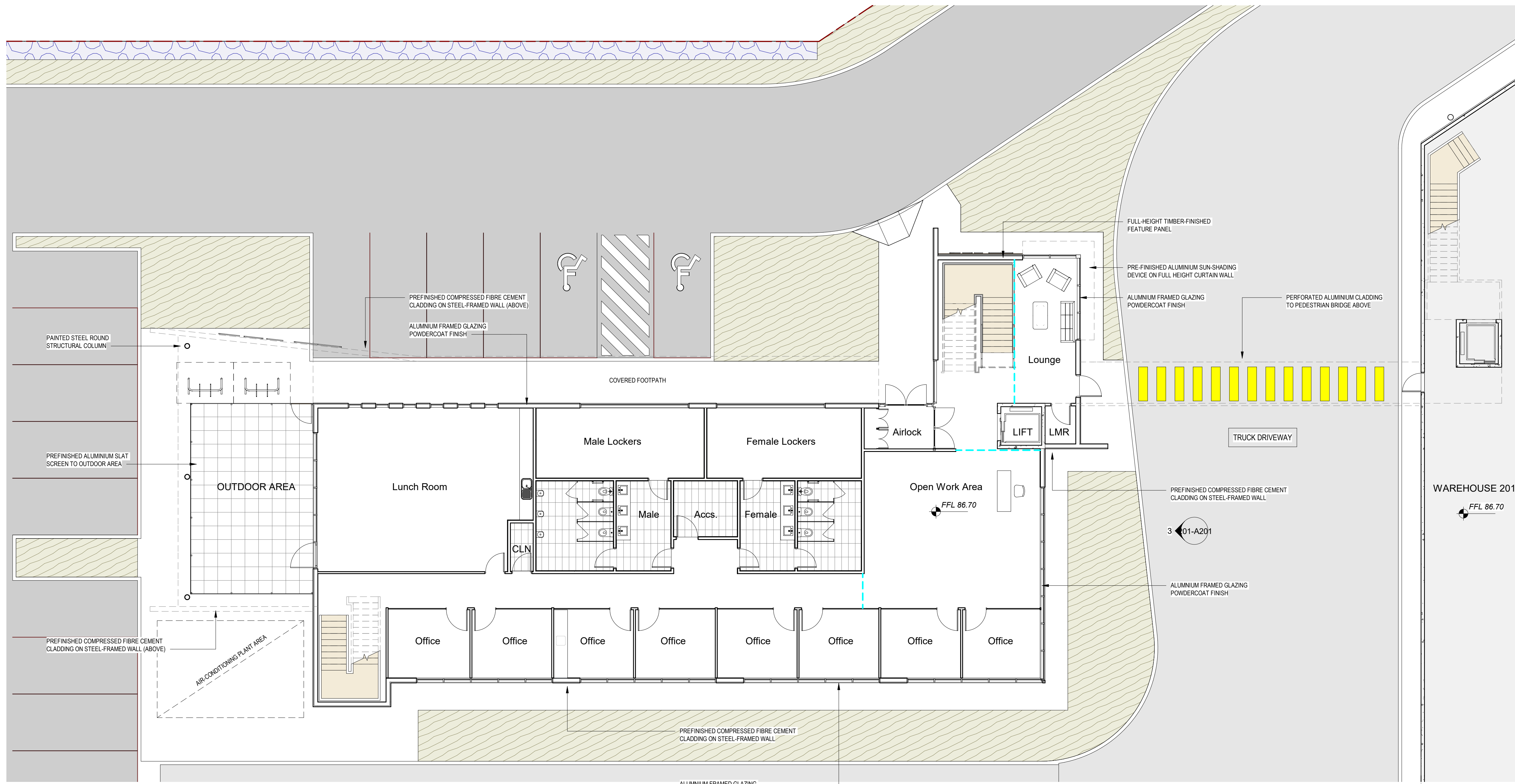
admin@hlarchitects.com.au  
t 02 9191 9942  
m 0424 160 365  
www.hlarchitects.com.au  
Suite 53, 9 George St, North Strathfield NSW 2157



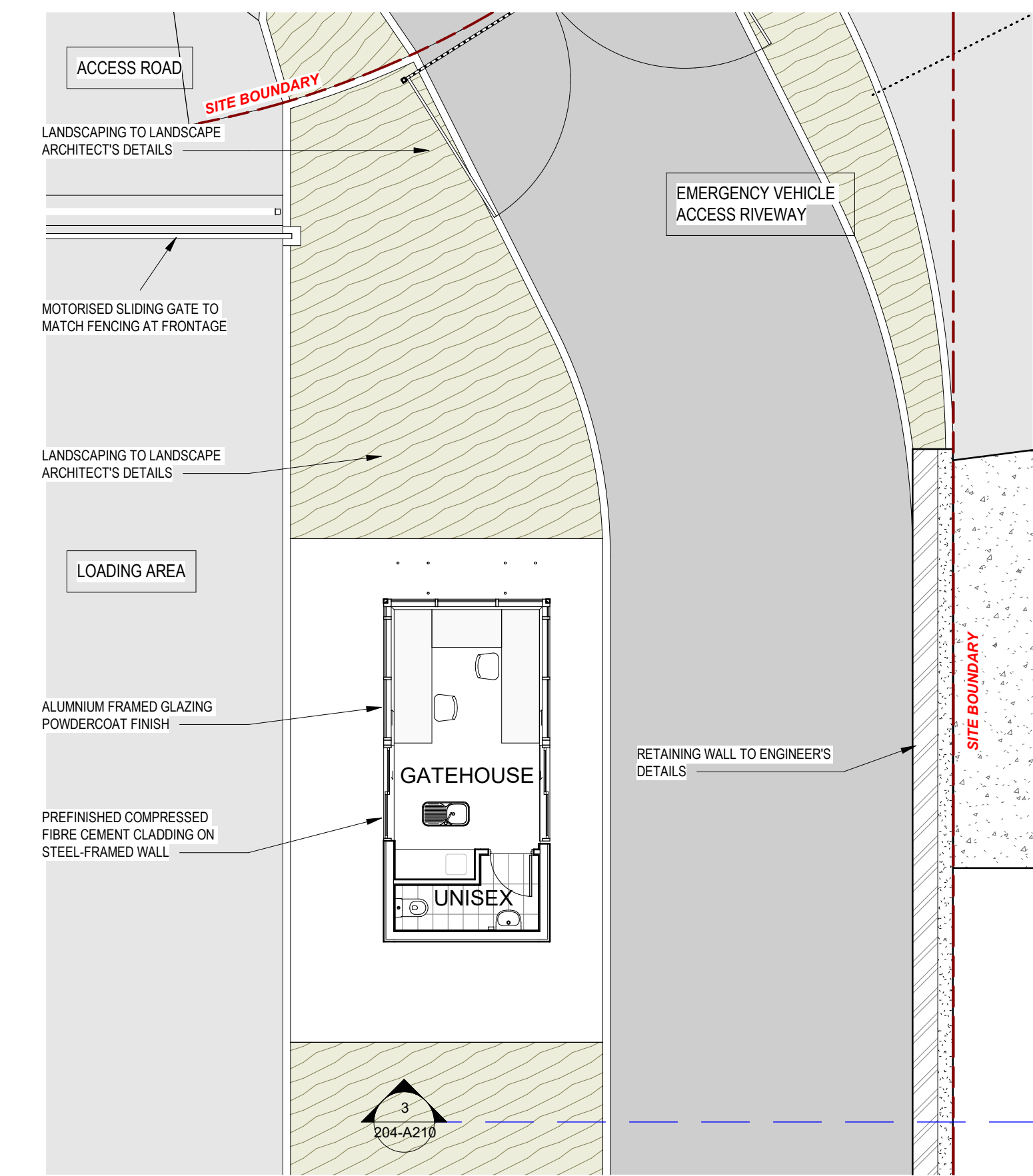
DEVELOPMENT APPLICATION

DRAWING TITLE: LOT 201 SITE & FACILITY PLAN  
DRAWING NUMBER: 200226 - DA - 201-A100

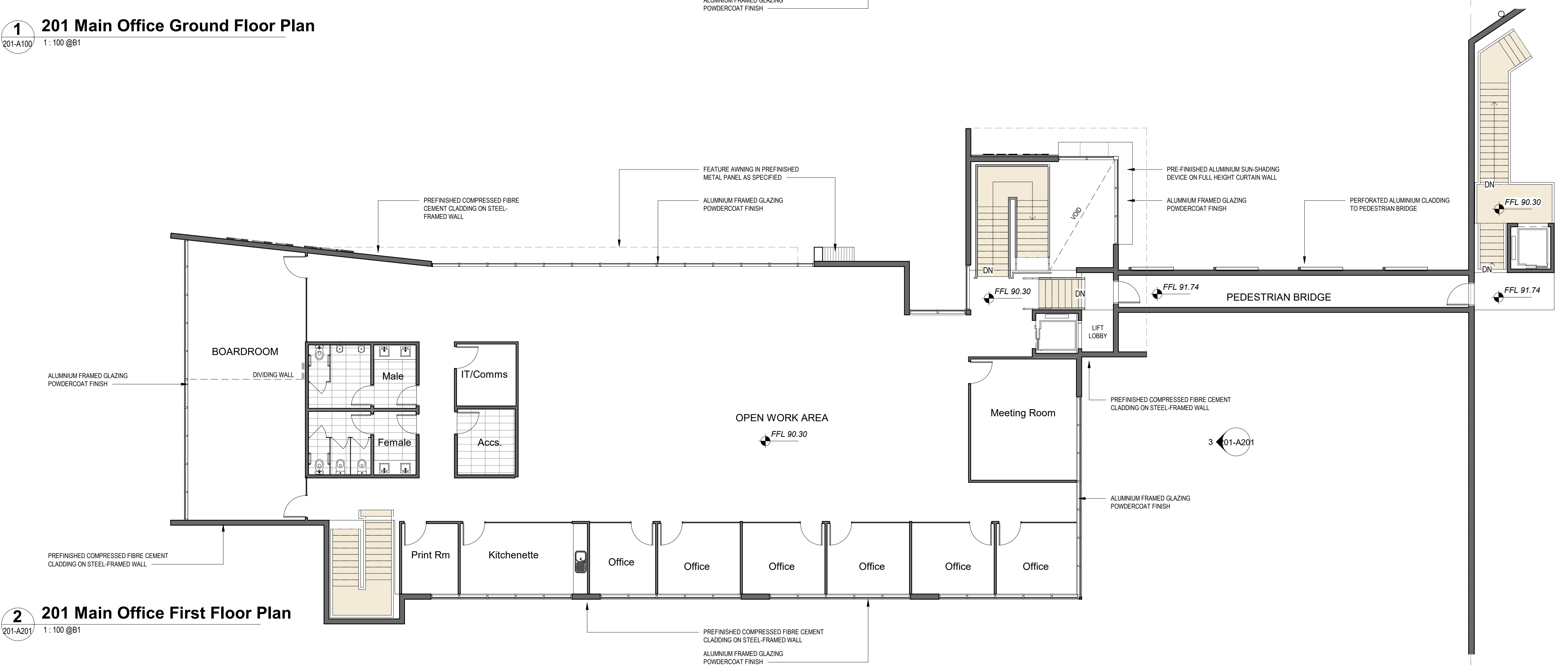
22/06/2020 4:55:07 PM BM 300:ESR Horsley Logistics Pk408\_Burley Rd\_detailed.rvt



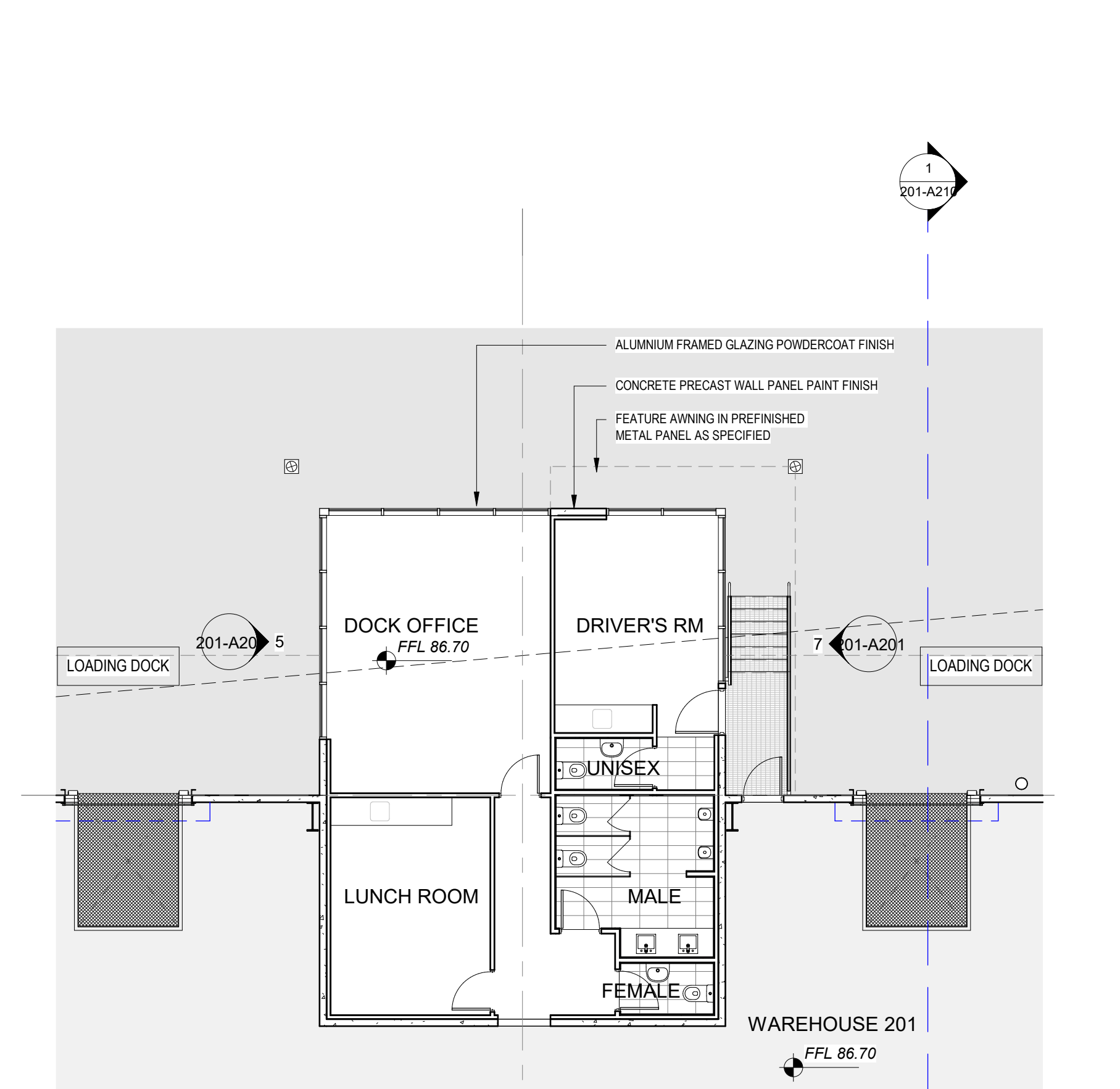
**1 201 Main Office Ground Floor Plan**  
201-A100 1:100 @B1



**4 201 Gate House Floor Plan**  
201-A100 1:100 @B1



**2 201 Main Office First Floor Plan**  
201-A201 1:100 @B1



**3 Dock Office Floor Plan**  
201-A100 1:100 @B1

22/06/2024 1:35:55 PM BIM 360://ESR Horsley Logistics Park03\_Burley\_Rd\_detailed.rvt



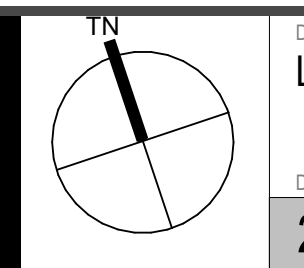
PROJECT MANAGER

PROJECT ESR HORSLEY LOGISTIC PARK  
ADDRESS 327-335 BURLEY ROAD  
HORSLEY PARK NSW  
PROJECT NUMBER 200226

Rev	Description	Date
A	DA Issue	30.03.20
B	Development Application Issue	22.06.20

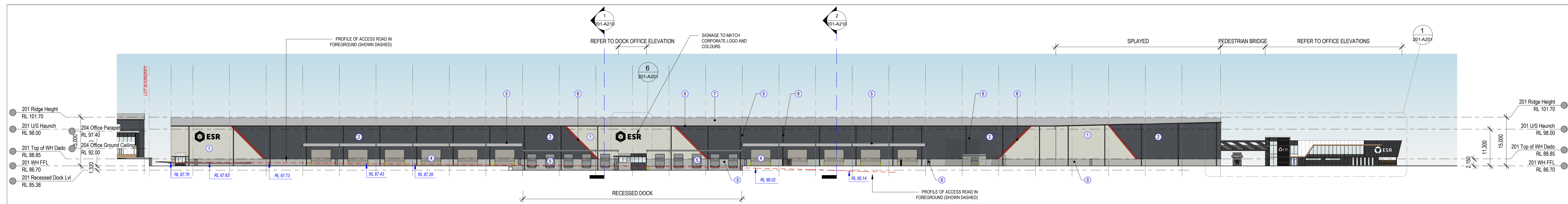
HL Architects Pty Ltd. This drawing is confidential and is subject to copyright. It may not be copied, used, reproduced or transmitted in any way or in any form without the express permission of HL Architects Pty Ltd.  
General Notes:  
Architectural drawings to be read in conjunction with all other consultants' detailed drawings, specifications & reports.  
Do not scale this drawing. Verify all dimensions on site.  
Refer all discrepancies to HLA before commencing any work.

HL Architects Pty Ltd A.C.N. 161 638 320  
nominated architect: KIM HOANG (LAI)  
(Reg No. NSW #1559; QLD #16020; TAS #1101)  
E admin@hlarchitects.com.au  
T 02 9199 9942  
M 0424 160 365  
W www.hlarchitects.com.au  
A Suite 53, 6 George St, North Strathfield NSW 2137

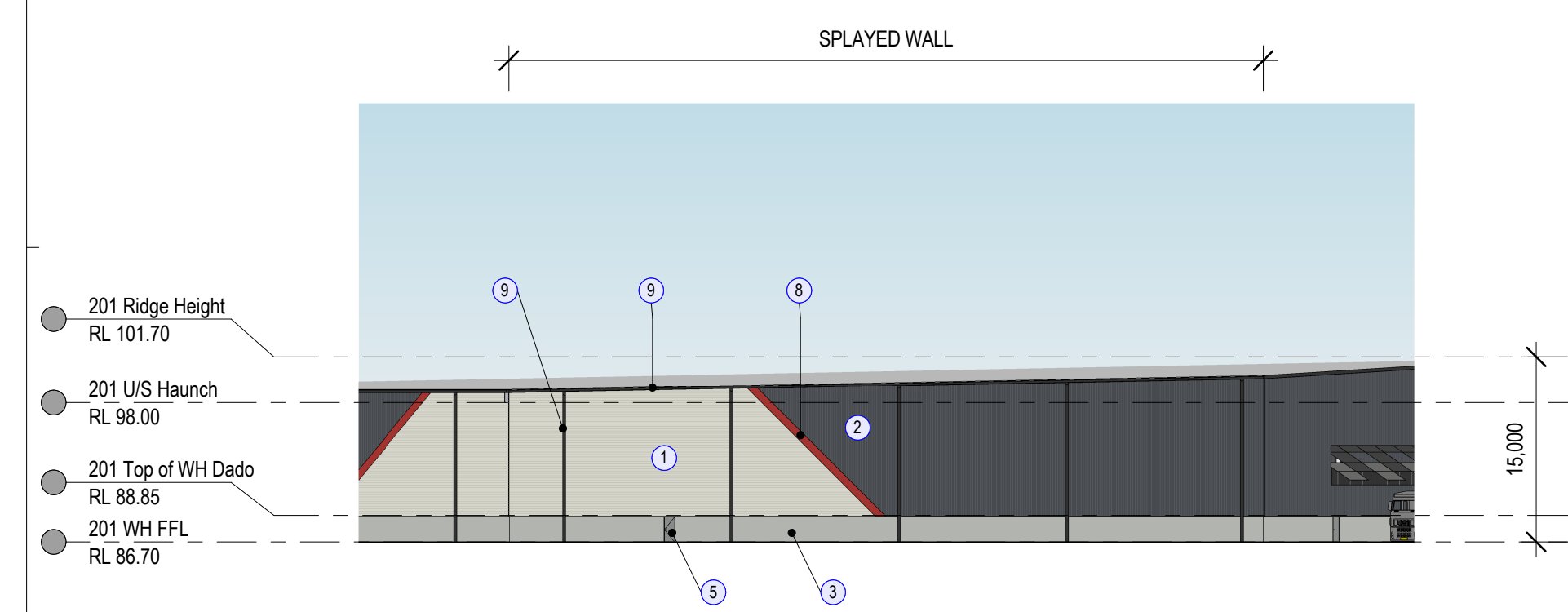


DRAWING TITLE LOT 201 OFFICE PLANS  
DRAWING NUMBER 200226 - DA - 201-A110  
DRAWN HL  
CHK HL  
ISSUE

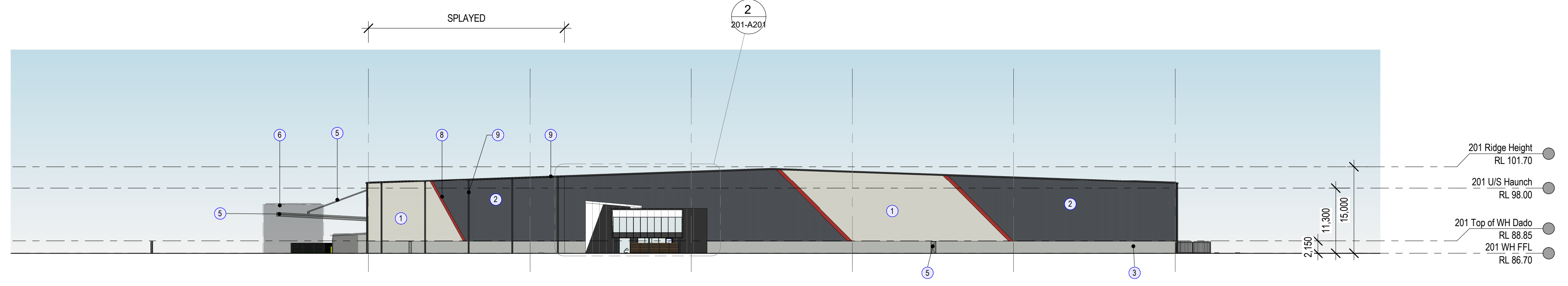
**DEVELOPMENT APPLICATION**



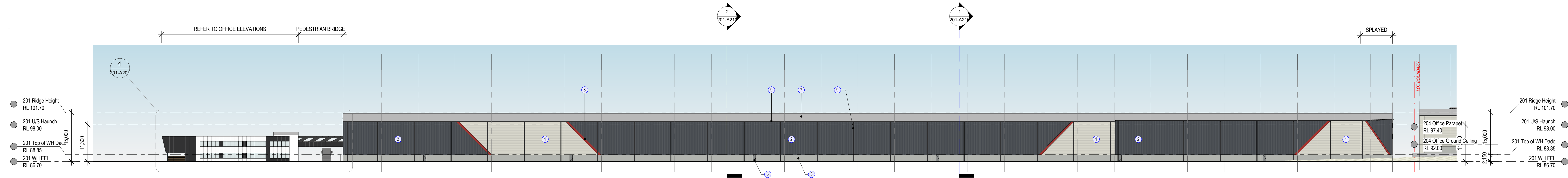
**1 Lot 201 North Elevation (Access Road)**  
201-A100 1:500 @B1



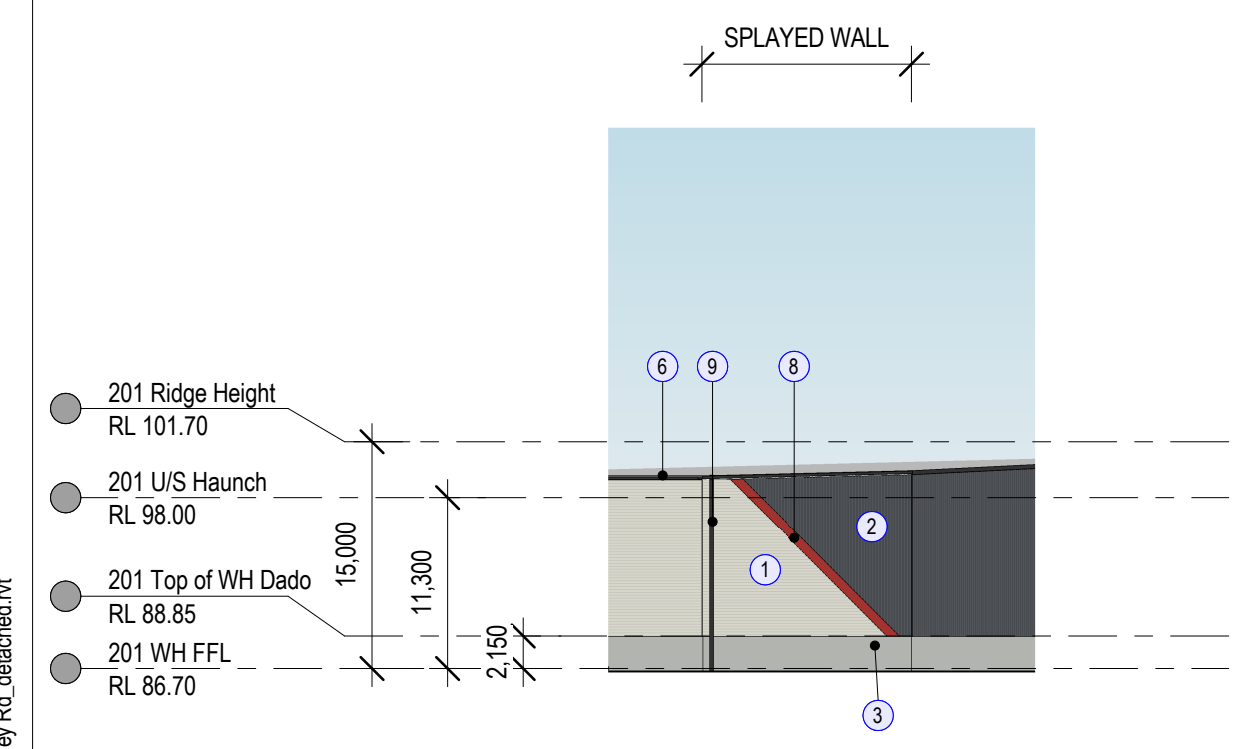
**2 Lot 201 NW Splayed Wall Elevation**  
201-A100 1:500 @B1



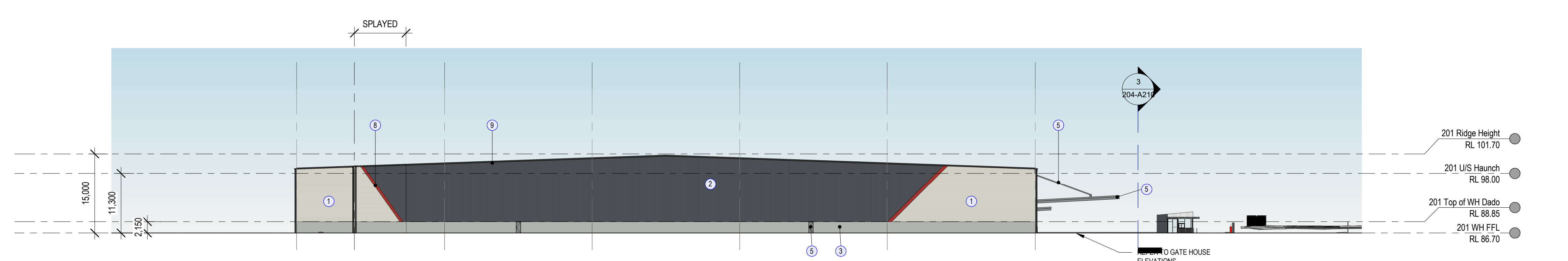
**3 Lot 201 West Elevation**  
1:500 @B1



**4 Lot 201 South Elevation**  
1:500 @B1



**5 Lot 201 SE Splayed Wall Elevation**  
201-A100 1:500 @B1



**6 Lot 201 East Elevation**  
201-A100 1:500 @B1

WAREHOUSE EXTERNAL FINISHES	
1	PRE-FINISHED METAL CLADDING - COLORBOND SURFMIST HORIZONTAL SPAN
2	PRE-FINISHED METAL CLADDING - COLORBOND IRONSTONE
3	PRECAST CONCRETE - PAINT FINISH TO MATCH COLORBOND SHALE GREY
4	FLUSHED DOCK ROLLER SHUTTER DOOR - PAINT FINISH TO MATCH COLORBOND SHINE
5	RECESSED DOCK ROLLER SHUTTER DOOR/EGRESS DOOR - FINISH TO MATCH COLORBOND SHINE
6	WATER TANKS - COLORBOND IRONSTONE
7	ZINCALUME ROOF SHEETING WITH 10% TRANSLUCENT SHEETING
8	METAL CLADDING TRIM - COLOUR TO MATCH DULUX MACDONNELL RANGES R86
9	DOWNPIPES WAREHOUSE GUTTERS FASCIA & BARGE COVER - COLORBOND MONUMENT
10	PRECAST CONCRETE - PAINT FINISH TO MATCH COLORBOND IRONSTONE
11	PRECAST CONCRETE WING WALL - PAINT FINISH TO MATCH COLORBOND SURFMIST

**DEVELOPMENT APPLICATION**



PROJECT NUMBER  
200226

PROJECT  
ESR HORSLEY LOGISTIC PARK  
ADDRESS  
327-335 BURLEY ROAD  
HORSLEY PARK NSW  
PROJECT NUMBER  
200226

Rev	Description	Date
A	DA Issue	30.03.20
B	Development Application Issue	22.06.20

HL Architects Pty Ltd. This drawing is confidential and is subject to copyright. It may not be copied, used, reproduced or transmitted in any way or in any form without the express permission of HL Architects Pty Ltd.  
HL Architects Pty Ltd A.C.N. 161 638 320  
nominated architect: KIM HONG LIAU  
(Reg No. NS19 #1556, OLD #6020, TAS #1101)  
e admin@hlarchitects.com.au  
t 02 9195 9942  
m 0424 160 365  
www.hlarchitects.com.au  
Suite S3, 6 George St, North Strathfield NSW 2157



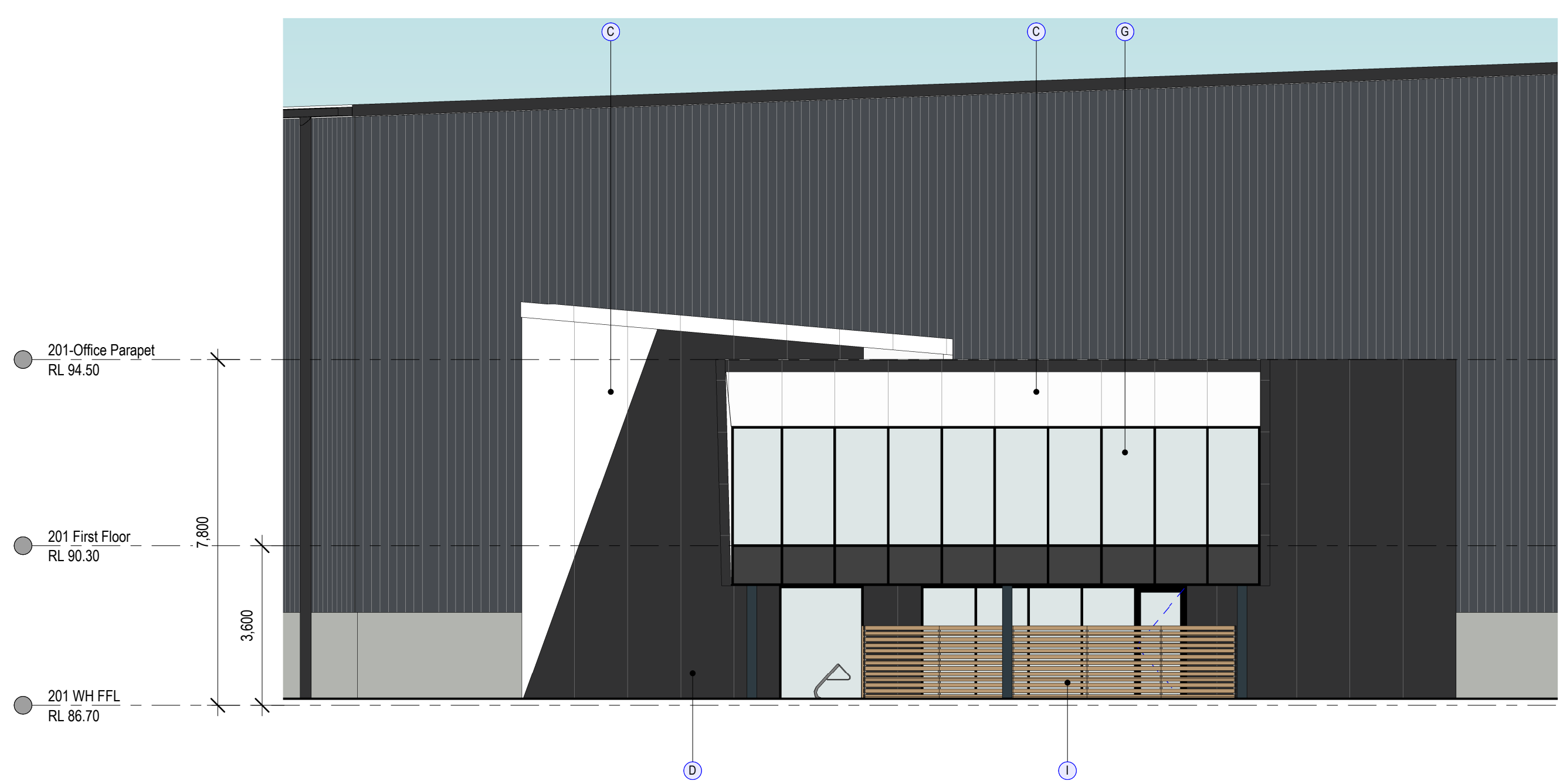
DRAWING TITLE  
LOT 201 WAREHOUSE ELEVATIONS  
DRAWING NUMBER  
200226 - DA - 201-A200  
DRAWN  
AB  
CHK  
HL  
ISSUE  
B



**1 201 North Elevation (Main Office)**  
201-A200 1:100 @B1



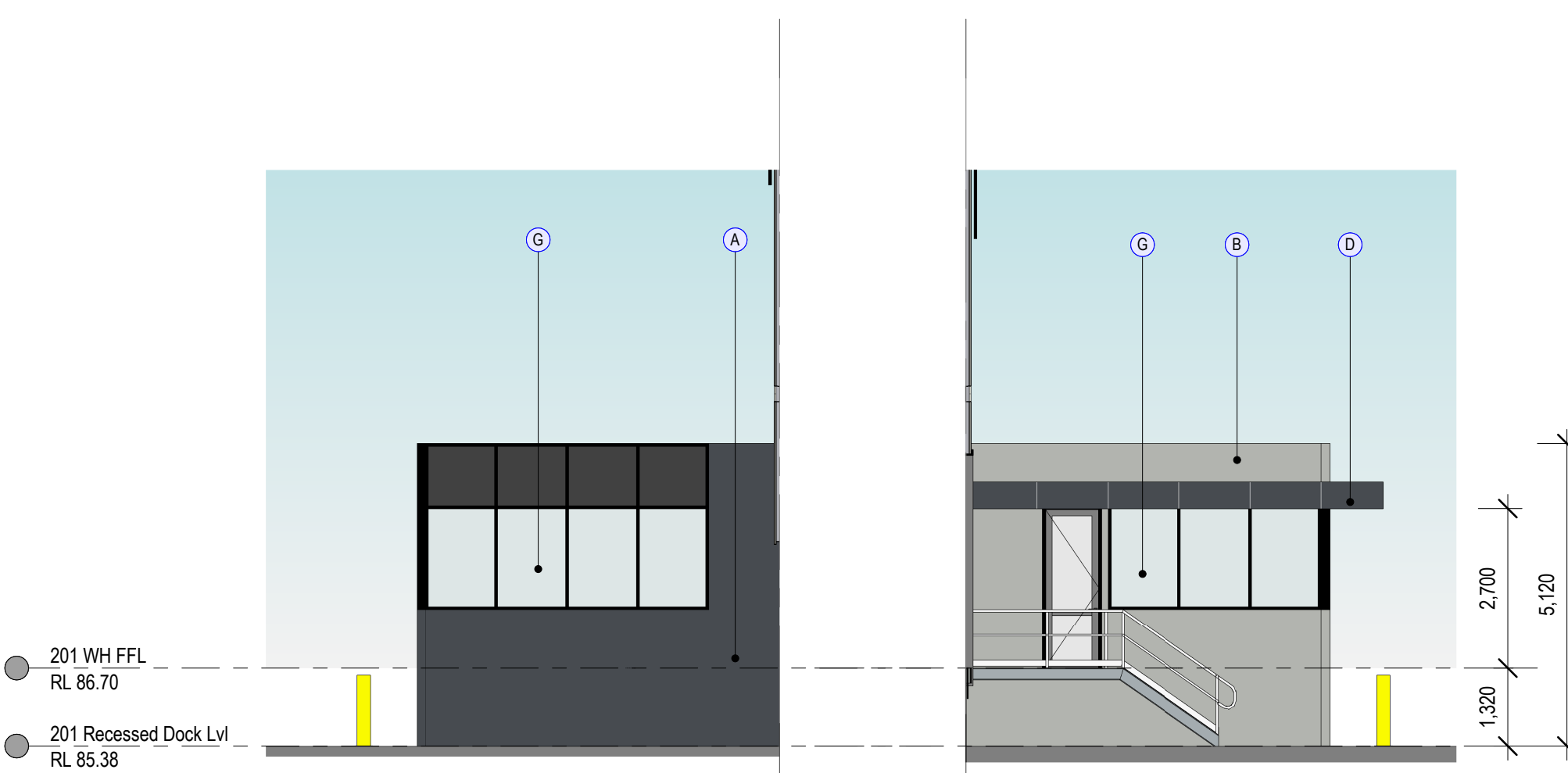
**6 201 North Elevation (Dock Office)**  
201-A200 1:100 @B1



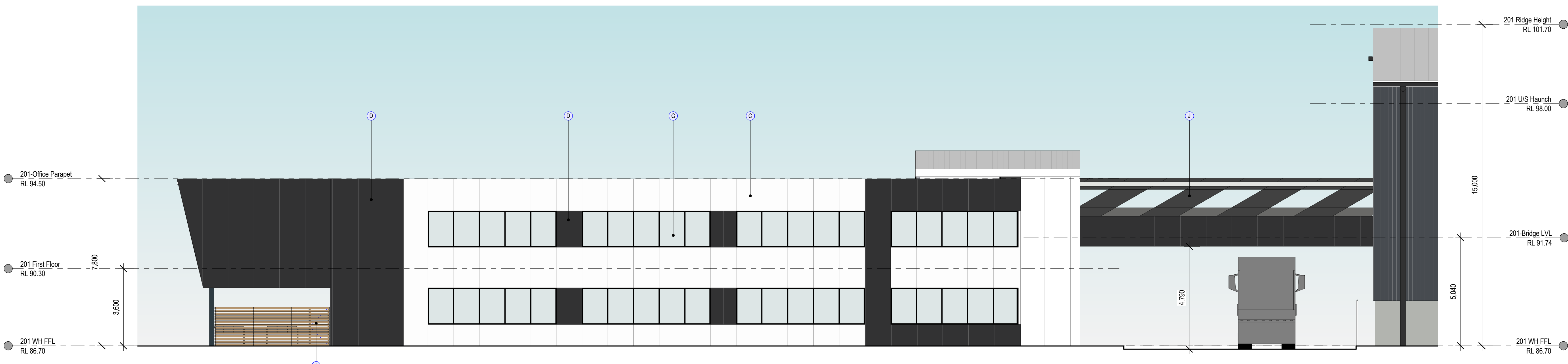
**2 201 West Elevation (Main Office)**  
201-A200 1:100 @B1



**3 201 East Elevation (Main Office)**  
201-A110 1:100 @B1



**5 201 West Elevation (Dock Office)** **7 201 East Elevation (Dock Office)**  
201-A110 1:100 @B1



**4 201 South Elevation (Main Office)**  
201-A200 1:100 @B1

OFFICE EXTERNAL FINISHES	
(A)	PRECAST CONCRETE - PAINT FINISH TO MATCH DULUX 'CB IRONSTONE'
(B)	PRECAST CONCRETE - PAINT FINISH TO MATCH DULUX 'CB SHALE GREY'
(C)	PRE-FINISHED PANELISED CLADDING SYSTEM COLOURS TO MATCH DULUX 'VIVID WHITE'
(D)	PRE-FINISHED PANELISED CLADDING SYSTEM COLOURS TO MATCH DULUX 'CB IRONSTONE'
(E)	PRE-FINISHED PANELISED LIGHT WEIGHT CLADDING FINISHES TO SIMULATE TIMBER FINISHES
(F)	ALUMINUM FEATURE SUN-SHADING. POWDERCOATED FINISH COLOUR TO MATCH 'CITI SILVER PEARL'
(G)	POWDERCOATED ALUMINUM FRAMED GLAZING TO COMPLY WITH NCC SECTION J
(H)	HORIZONTAL FEATURE SLAT SCREEN ON PAINTED COMPRESSED FIBRE CEMENT CLAD WALL - COLOUR TO MATCH KNOTWOOD
(I)	HORIZONTAL SLAT SCREEN FENCING TO OUTDOOR AREA - COLOUR TO MATCH KNOTWOOD
(J)	PERFORATED ALUMINUM PANEL SCREENING. POWDER COATED FINISH TO MATCH ZEUS GREY & ZEUS MONUMENT
(K)	PROPRIETARY HORIZONTAL VERTICAL LOUVER SUNSHADING. PRE-FINISHED TO SIMULATE TIMBER FINISH

22/06/2024 4:57:51 PM BIM 360://ESR\_Horsley\_Logistics\_Park08\_Burley\_Rd\_detached.rvt



PROJECT MANAGER

PROJECT: ESR HORSLEY LOGISTIC PARK  
ADDRESS: 327-335 BURLEY ROAD, HORSLEY PARK NSW  
PROJECT NUMBER: 200226

Rev	Description	Date
A	DA Issue	30.03.20
B	Development Application Issue	22.06.20

HL Architects Pty Ltd. This drawing is confidential and is subject to copyright. It may not be copied, used, reproduced or transmitted in any way or in any form without the express permission of HL Architects Pty Ltd.  
General Notes:  
Architectural drawings to be read in conjunction with all other consultants detailed drawings, specifications & reports.  
Do not scale this drawing. Verify all dimensions on site.  
Refer all discrepancies to HLA before commencing any work.

HL Architects Pty Ltd A.C.N. 161 638 320  
nominated architect: Kie Hong Lau  
(Reg No. NSW #1559, QLD #6020, TAS #1101)  
e admin@hlarchitects.com.au  
t 02 9199 9942  
m 0424 160 365  
www.hlarchitects.com.au  
Suite S3, 6 George St, North Strathfield NSW 2137



**DEVELOPMENT APPLICATION**

DRAWING TITLE: LOT 201 OFFICE ELEVATIONS  
DRAWING NUMBER: 200226 - DA - 201-A201  
ISSUE: B

DRAWN: AB  
CHK: HL  
ISSUE: B