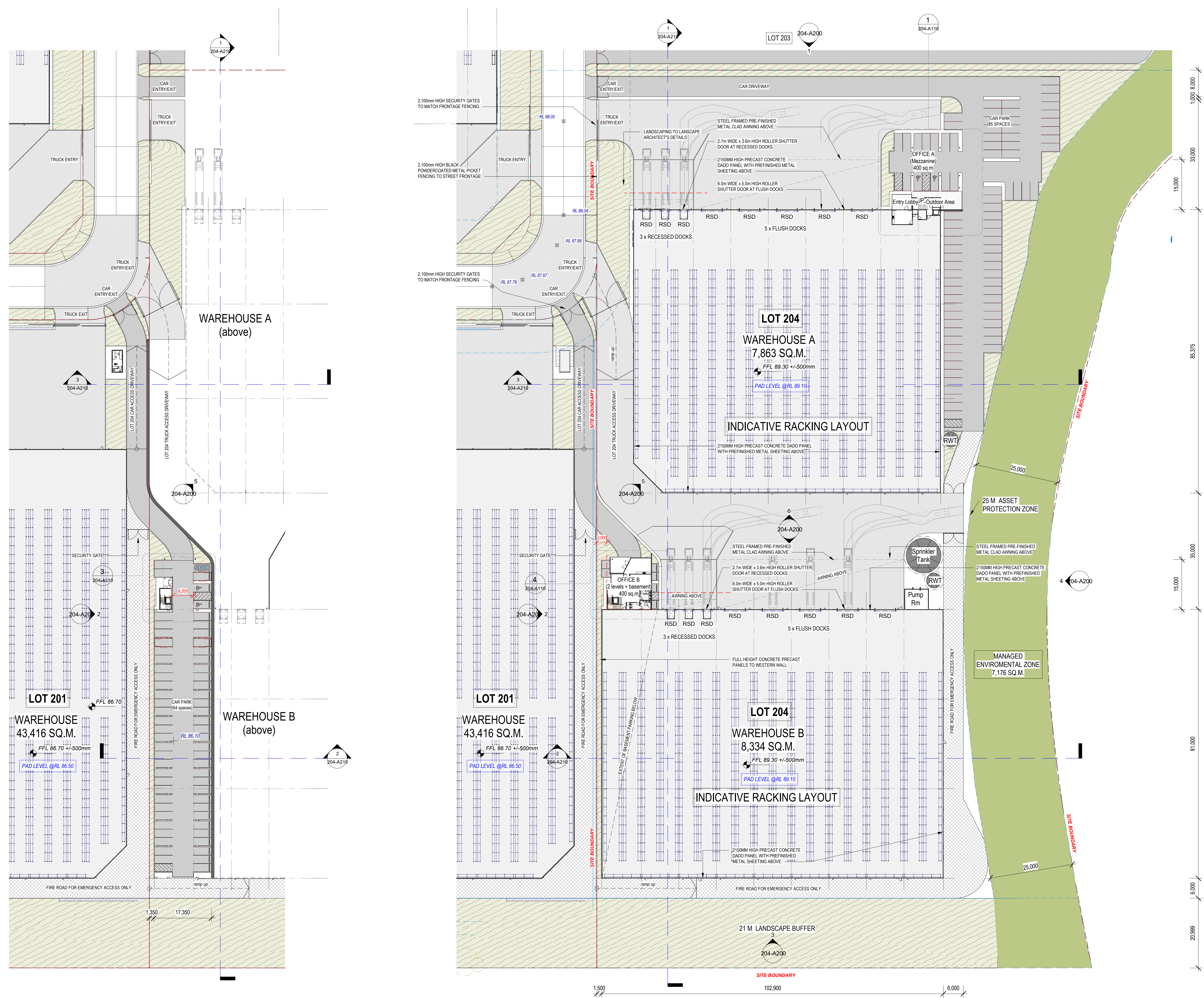


DEVELOPMENT SUMMARY (LOT 204)	
SITE AREA (Incl. Environmental Zone - 7,176 sqm)	40,100 sqm
EFFICIENCY	42.39 %
WAREHOUSE A	7,863 sqm
OFFICE A	400 sqm
WAREHOUSE B	8,334 sqm
OFFICE B	400 sqm
TOTAL BUILDING AREA	16,997 sqm
CAR PARKING PROVIDED	149 Spaces
HEAVY DUTY PAVEMENT (H)	6,632 sqm
LIGHT DUTY PAVEMENT (L)	5,100 sqm
SUSPENDED SLAB	1,327 sqm

Parking Schedule (Lot 204 WH-A)		
Type	Description	Count
PK-CP1	PK-CP1-5500 x 2500mm - (Disable)	2
PK-CP2	PK-CP1-5500 x 2500mm - 90 deg	83
Grand total		85

Parking Schedule (Lot 204 WH-B)		
Type	Description	Count
PK-CP1	PK-CP1-5500 x 2500mm - (Disable)	2
PK-CP2	PK-CP1-5500 x 2500mm - 90 deg	62
Grand total		64



2 Lot 204 Parking Level
204-A200 1:500 @B1

1 Site Facilities Plan (Lot 204)
204-A200 1:500 @B1

22/06/2025 5:31:49 PM BIM 360://ESR Horsley Logistics Park/08_Burley_Road_detached.rvt



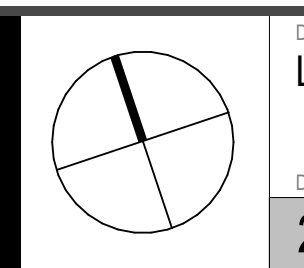
PROJECT MANAGER

PROJECT ESR HORSLEY LOGISTIC PARK
ADDRESS 327-335 BURLEY ROAD HORSLEY PARK NSW
PROJECT NUMBER 200226

Rev	Description	Date
A	Development Application Issue	22.06.20

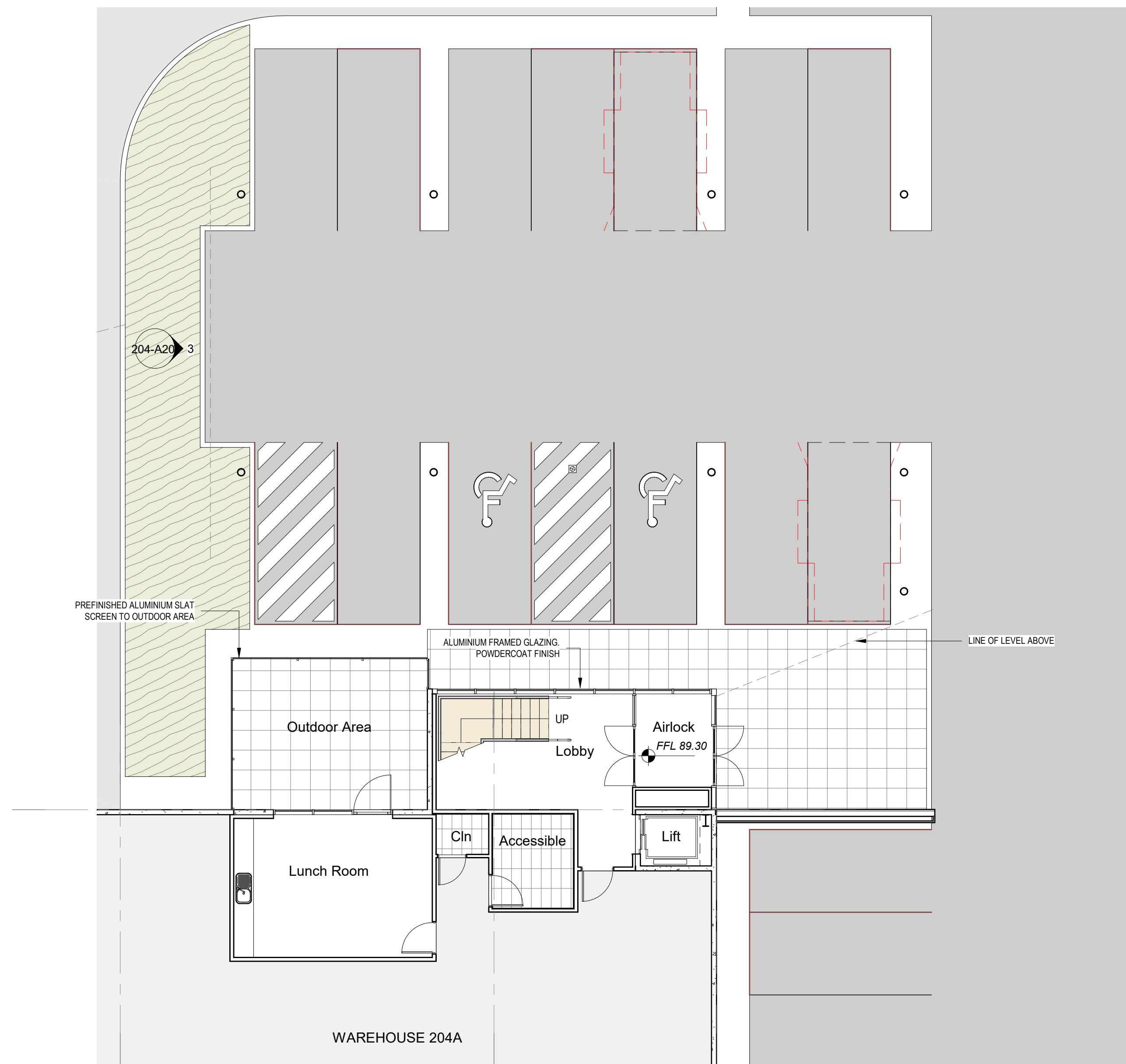
HL Architects Pty Ltd. This drawing is confidential and is subject to copyright. It may not be copied, used, reproduced or transmitted in any way or in any form without the express permission of HL Architects Pty Ltd.
General Notes: Architectural drawings to be read in conjunction with all other consultants' detailed drawings, specifications & reports. Do not scale this drawing. Verify all dimensions on site. Refer all discrepancies to HLA before commencing any work.

HL Architects Pty Ltd A.C.N. 161 638 320
nominated architect: KIM HOANG LAU
(Reg No. NSW #1559, QLD #6003, TAS #1101)
+ admin@hlarchitects.com.au
+ 02 9199 9942
+ 0424 160 365
www.hlarchitects.com.au
Suite 53, 9 George St, North Strathfield NSW 2137

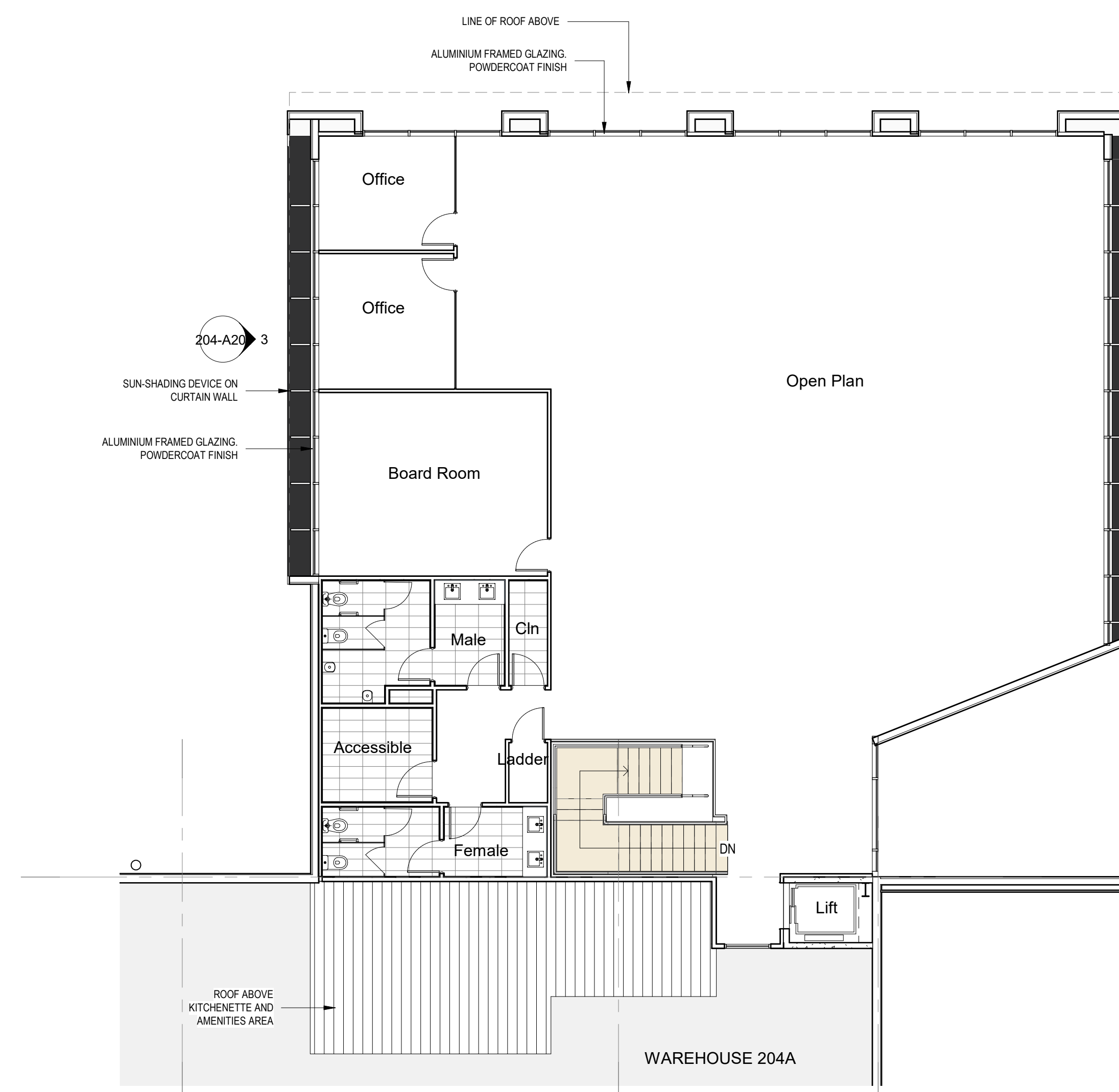


DRAWING TITLE LOT 204 SITE & FACILITY PLAN
DRAWING NUMBER 200226 - DA - 204-A100
DRAWN HL
CHK HL
ISSUE

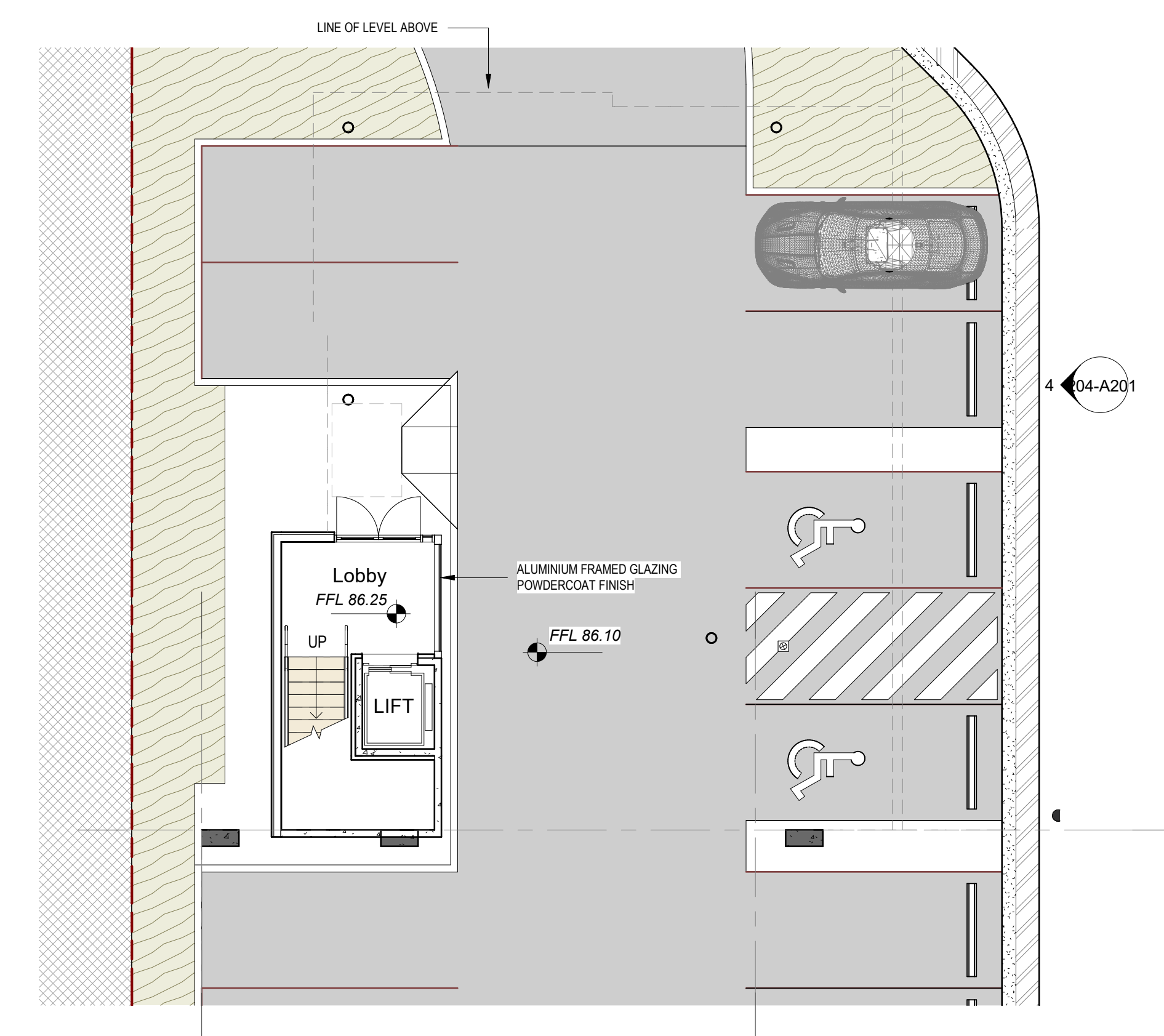
DEVELOPMENT APPLICATION



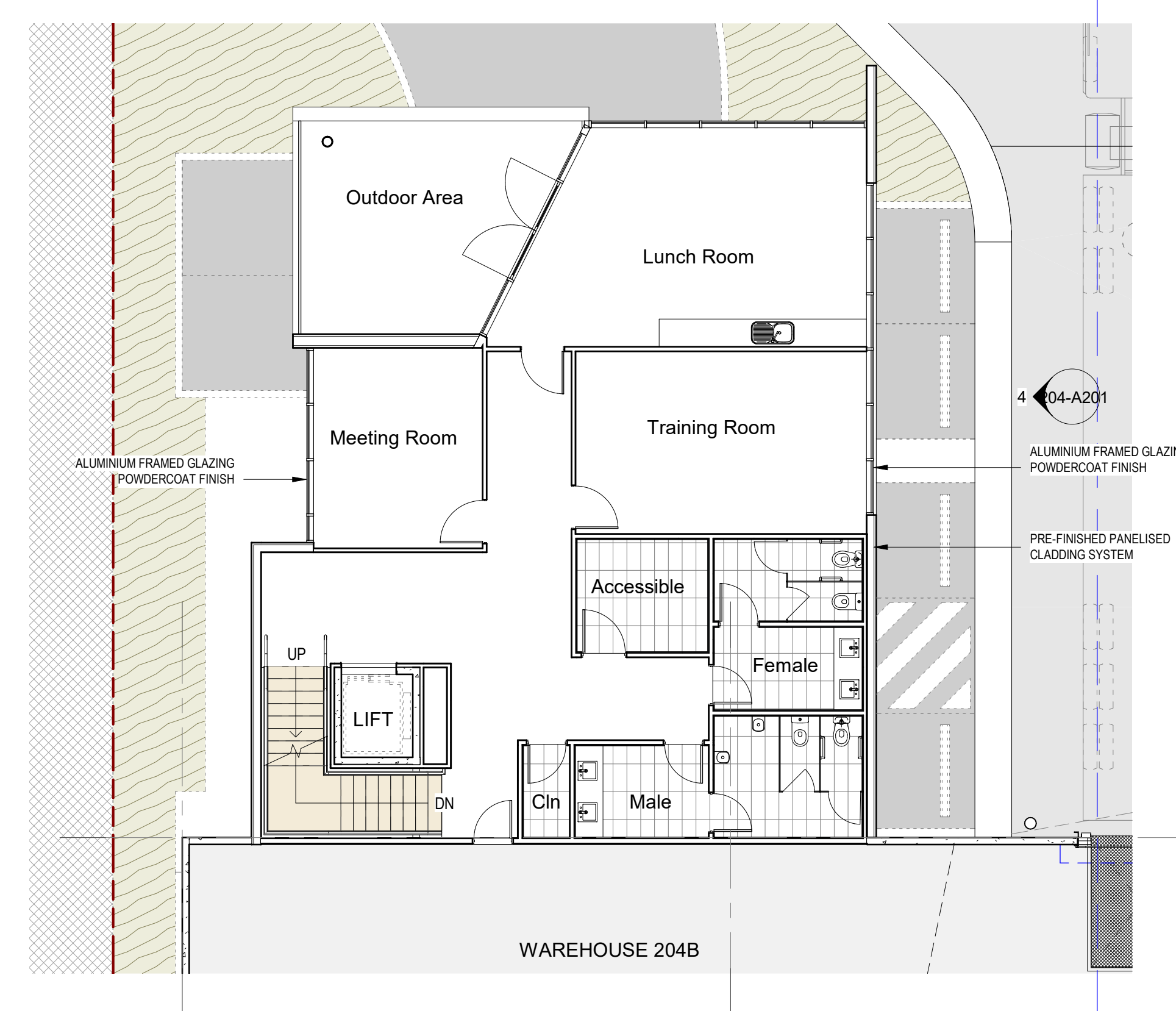
1 Office Ground Floor (WH 204A)
204-A100 1:100 @B1



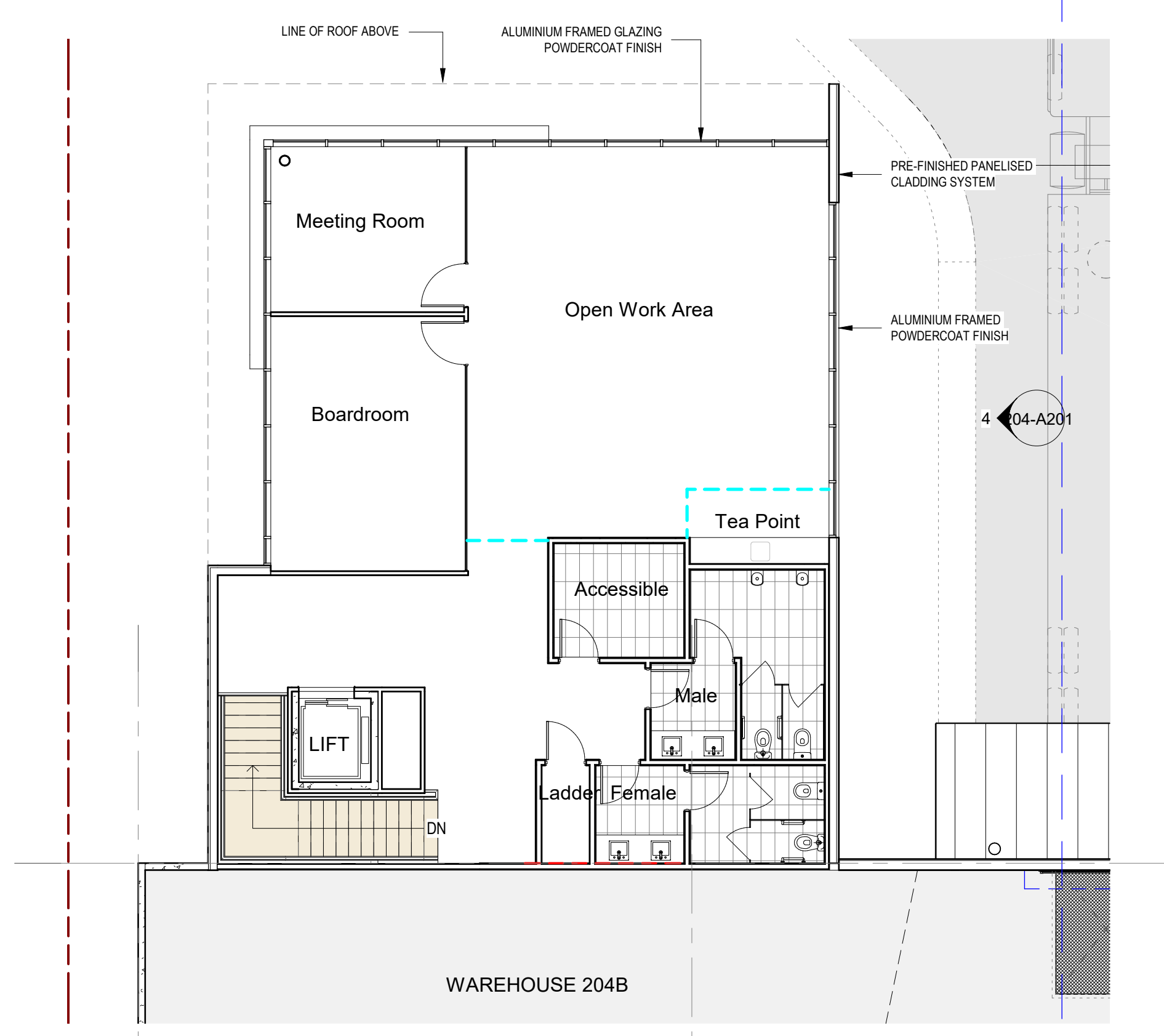
2 Office First Floor (WH 204A)
204-A201 1:100 @B1



3 Lot 204 Parking Level - Callout 1
204-A100 1:100 @B1



4 Office Ground Floor (WH 204B)
204-A100 1:100 @B1



5 Office First Floor (WH 204B)
204-A201 1:100 @B1

22/06/2025 5:46 PM BIM 360://ESR Horsley Logistics Park08_Burley_RL_detach.dwg



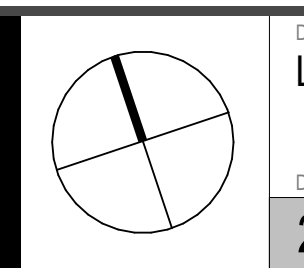
PROJECT NUMBER

PROJECT ESR HORSLEY LOGISTIC PARK
ADDRESS 327-335 BURLEY ROAD HORSLEY PARK NSW
PROJECT NUMBER 200226

Rev	Description	Date
A	Development Application Issue	22.06.20

General Notes:
Architectural drawings to be read in conjunction with all other consultants detailed drawings, specifications & reports.
Do not scale this drawing. Verify all dimensions on site.
Refer all discrepancies to HLA before commencing any work.

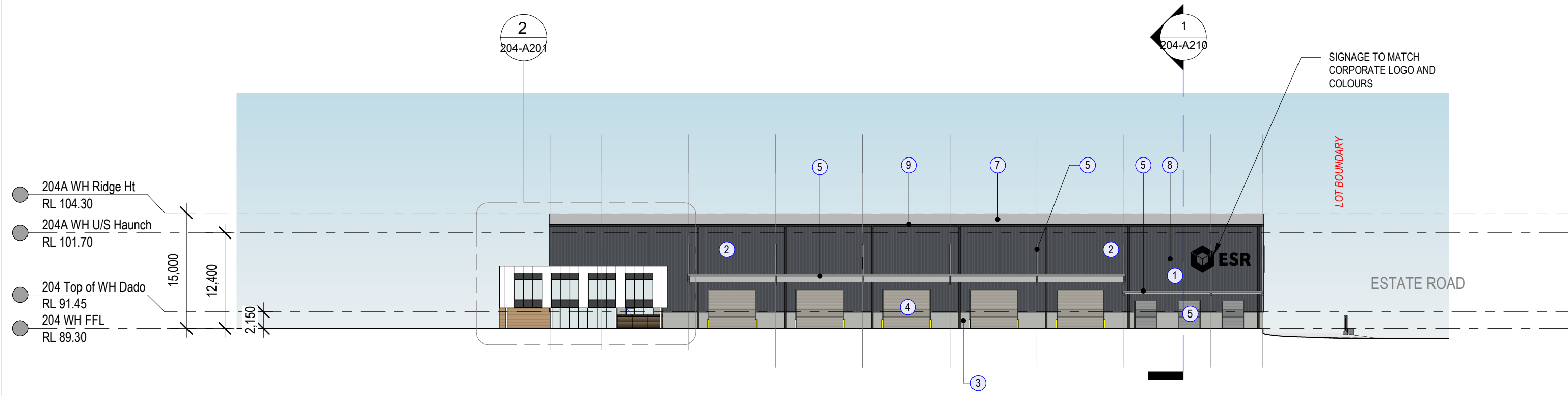
HL Architects Pty Ltd A.C.N. 161 638 320
nominated architect: Koi Hong LAM
(Reg No. NSW #1559; QLD #6020; TAS #1101)
4 admin@hlarchitects.com.au
t 02 9195 9942
m 0424 160 365
www.hlarchitects.com.au
Suite 51, 9 George St, North Strathfield NSW 2137



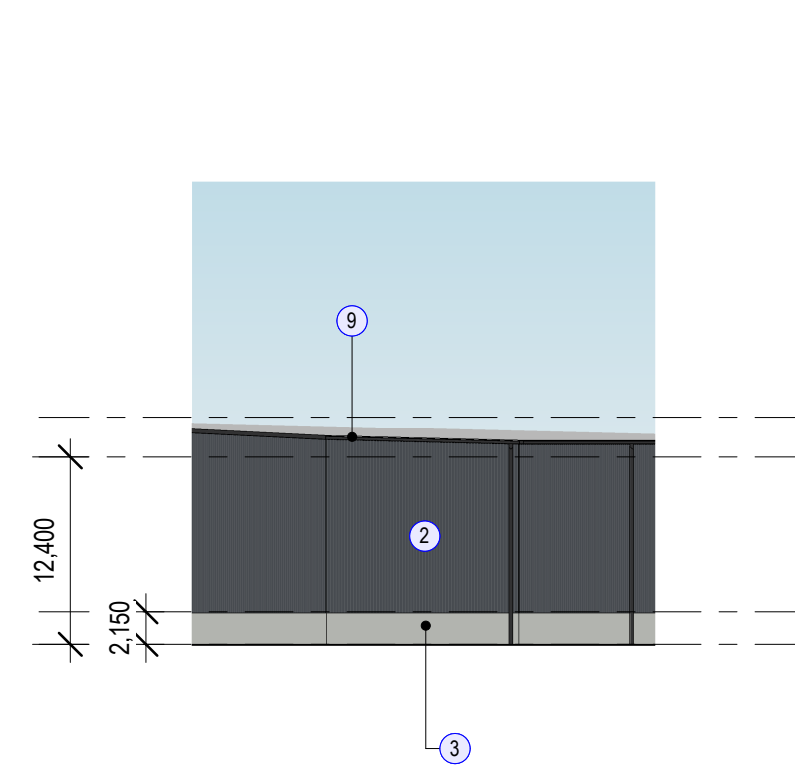
DEVELOPMENT APPLICATION

DRAWING TITLE LOT 204 OFFICE PLANS
DRAWING NUMBER 200226 - DA - 204-A110

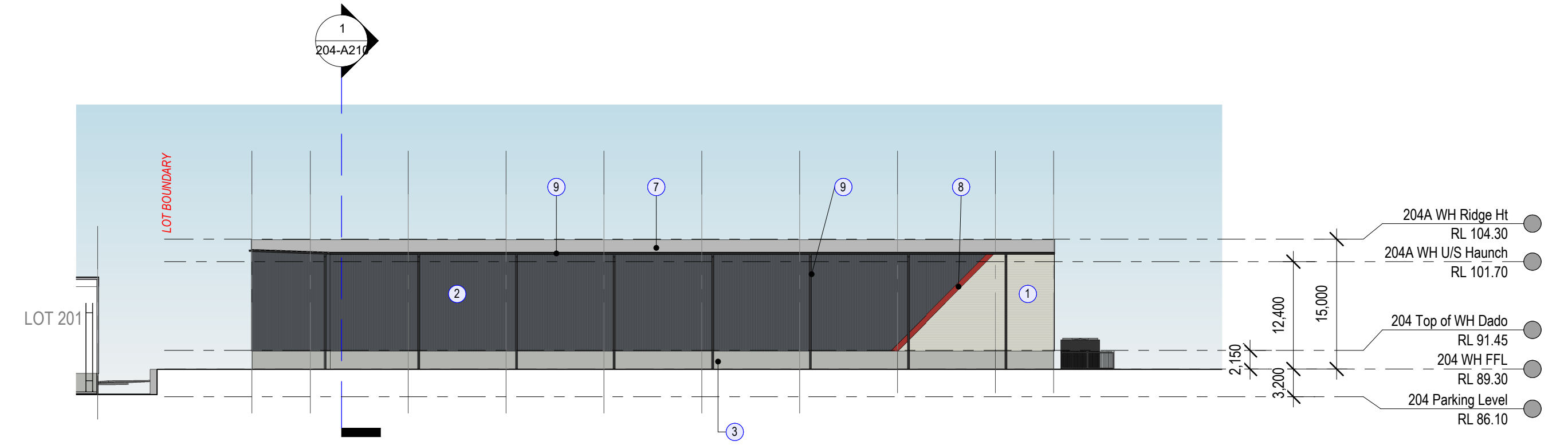
DRAWN MZ
CHK HL
ISSUE



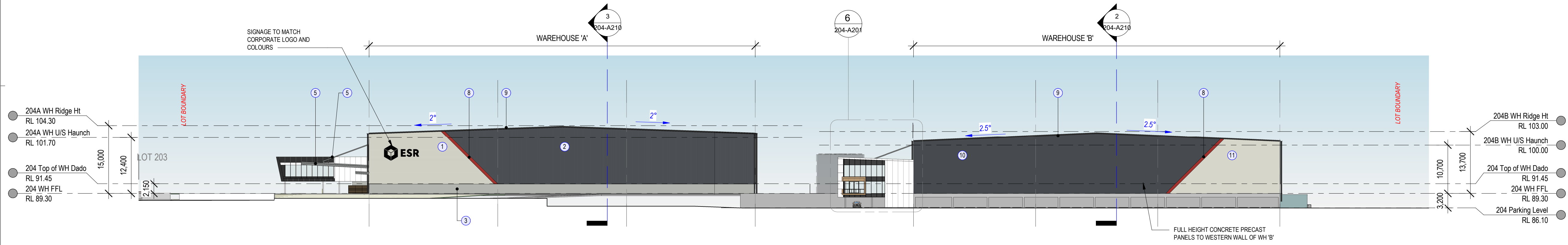
1 Lot 204 North Elevation (WH A)
202-A100 1:500 @B1



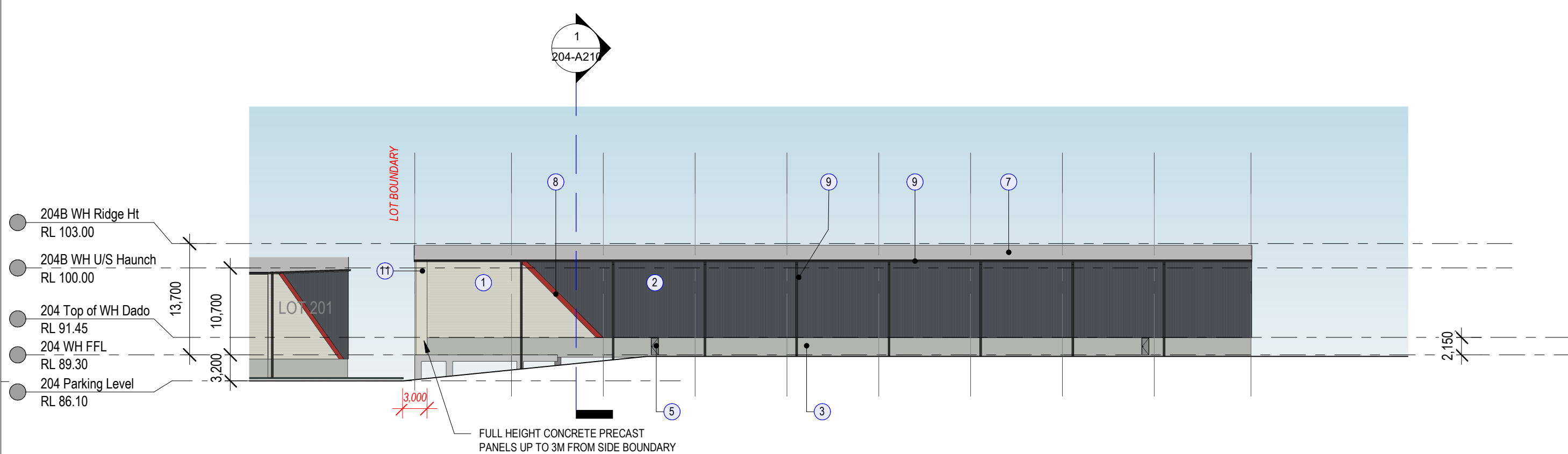
5 Lot 204 SW Elevation (WH A)
204-A100 1:500 @B1



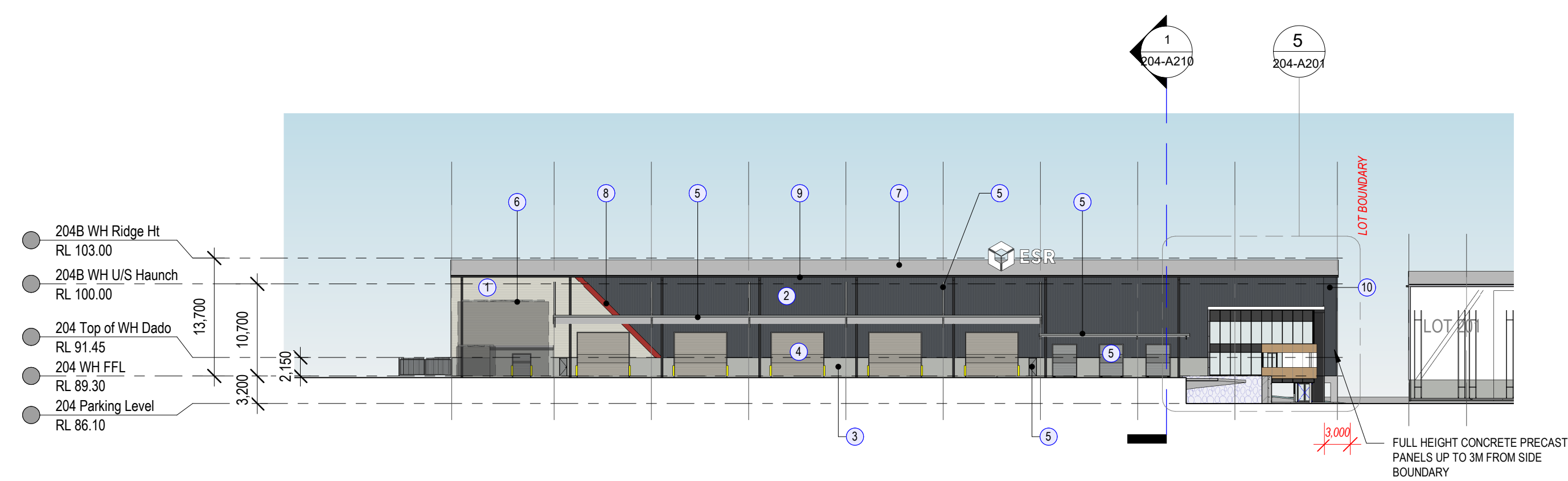
6 Lot 204 South Elevation (WH A)
201-A100 1:500 @B1



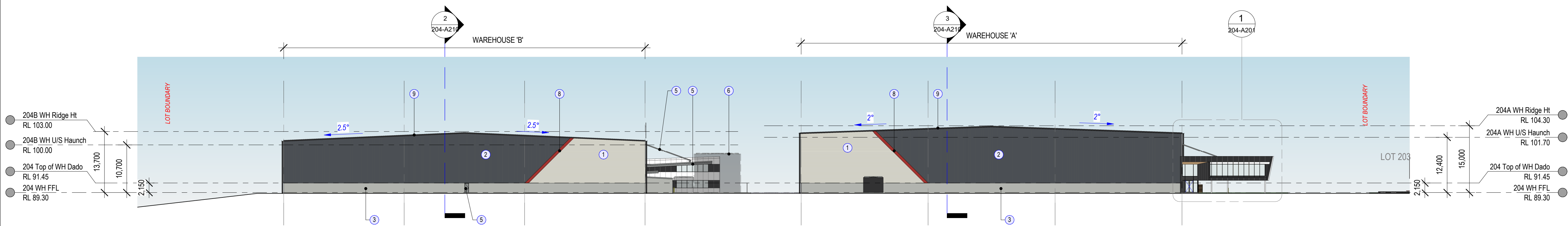
2 Lot 204 Western Elevation (Warehouse A & B)
201-A100 1:500 @B1



3 Lot 204 South Elevation (WH B)
201-A100 1:500 @B1



7 Lot 204 North Elevation (WH B)
201-A100 1:500 @B1



4 Lot 204 Eastern Elevation (Warehouse A & B)
204-A100 1:500 @B1

WAREHOUSE EXTERNAL FINISHES	
1	PRE-FINISHED METAL CLADDING - COLORBOND SURFMIST HORIZONTAL SPAN
2	PRE-FINISHED METAL CLADDING - COLORBOND IRONSTONE
3	PRECAST CONCRETE - PAINT FINISH TO MATCH COLORBOND SHALE GREY
4	FLUSHED DOOR ROLLER SHUTTER DOOR - PAINT FINISH TO MATCH COLORBOND DUNE
5	RECESSED DOOR ROLLER SHUTTER DOOR/EGRESS DOOR - FINISH TO MATCH COLORBOND WINDSPRAY
6	WATER TANKS - COLORBOND IRONSTONE
7	ZINCALUME ROOF SHEETING WITH 10% TRANSLUCENT SHEETING
8	METAL CLADDING TRIM - COLOUR TO MATCH DULUX MADONNELL RANGES R86
9	DOWNPIPES WAREHOUSE GUTTERS, FASCIAS & BARGE COVER - COLORBOND MONUMENT
10	PRECAST CONCRETE - PAINT FINISH TO MATCH COLORBOND IRONSTONE
11	PRECAST CONCRETE WING WALL - PAINT FINISH TO MATCH COLORBOND SURFMIST

DEVELOPMENT APPLICATION

22/06/2025, 5:14:07 PM BIM-360-ESR-Horsley Logistics Park-08_Burley Rd_detach.ctb

PROJECT	ESR HORSLEY LOGISTIC PARK
ADDRESS	327-335 BURLEY ROAD HORSLEY PARK NSW
PROJECT NUMBER	200226

Rev	Description	Date
A	Development Application Issue	22.06.20

HL Architects Pty Ltd. This drawing is confidential and is subject to copyright. It may not be copied, used, reproduced or transmitted in any way or in any form without the express permission of HL Architects Pty Ltd.

General Notes:
Architectural drawings to be read in conjunction with all other consultants' detailed drawings, specifications & reports.
Do not scale this drawing. Verify all dimensions on site.
Refer all discrepancies to HLA before commencing any work.

HL Architects Pty Ltd A.C.N. 161 638 320
nominated architect: KIM HOANG LUU
(Reg No. NSW #159; QLD #6203; TAS #1101)

• admin@hlarchitects.com.au
t 02 9191 9942
m 0424 160 365
www.hlarchitects.com.au
Suite 51, 9 George St, North Strathfield NSW 2157

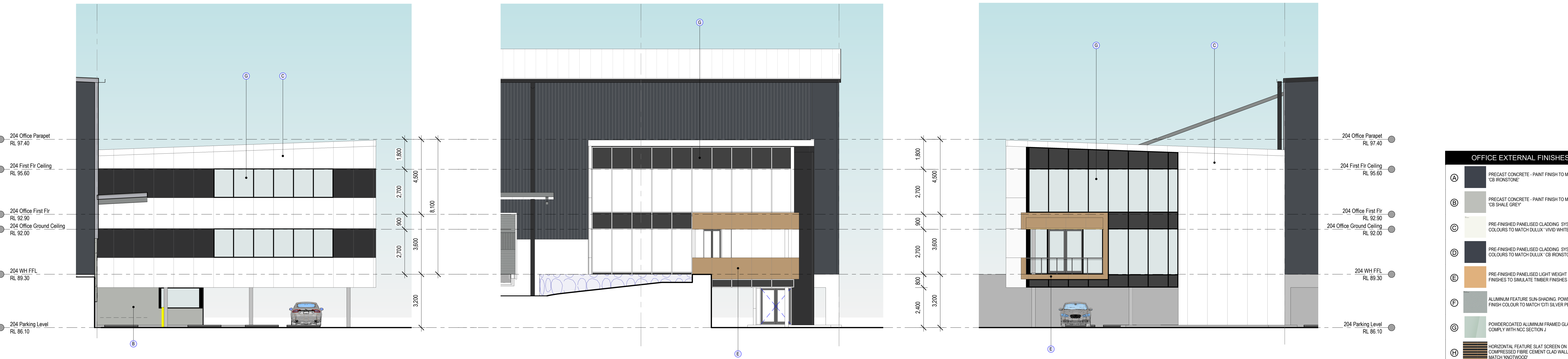
DRAWING TITLE	LOT 204 WAREHOUSE ELEVATIONS	DRWN	AB
DRAWING NUMBER	200226 - DA - 204-A200	CHK	HL
		ISSUE	1



1 Lot 204 Office-A East Elevation
204-A200 1:100 @B1

2 Lot 204 Office-A North Elevation
204-A200 1:100 @B1

3 Lot 204 Office-A West Elevation
204-A110 1:100 @B1



4 Lot 204 Office-B East Elevation
204-A110 1:100 @B1

5 Lot 204 Office-B North Elevation
204-A200 1:100 @B1

6 Lot 204 Office-B West Elevation
204-A200 1:100 @B1

OFFICE EXTERNAL FINISHES	
(A)	PRECAST CONCRETE - PAINT FINISH TO MATCH DULUX 'CB IRONSTONE'
(B)	PRECAST CONCRETE - PAINT FINISH TO MATCH DULUX 'CB SHALE GREY'
(C)	PRE-FINISHED PANELISED CLADDING SYSTEM COLOURS TO MATCH DULUX 'VIVID WHITE'
(D)	PRE-FINISHED PANELISED CLADDING SYSTEM COLOURS TO MATCH DULUX 'CB IRONSTONE'
(E)	PRE-FINISHED PANELISED LIGHT WEIGHT CLADDING FINISHES TO SIMULATE TIMBER FINISHES
(F)	ALUMINUM FEATURE SLAT SCREENING POWDERCOATED FINISH COLOUR TO MATCH 'CITI SILVER PEARL'
(G)	POWDERCOATED ALUMINUM FRAMED GLAZING TO COMPLY WITH NCC SECTION 9
(H)	HORIZONTAL FEATURE SLAT SCREEN ON PAINTED COMPRESSED FIBRE CEMENT CLAD WALL - COLOUR TO MATCH KNOTWOOD
(I)	HORIZONTAL SLAT SCREEN FENCING TO OUTDOOR AREA - COLOUR TO MATCH KNOTWOOD
(J)	PERFORATED ALUMINUM PANEL SCREENING POWDER COATED FINISH TO MATCH ZEUS GREY & ZEUS MONUMENT
(K)	PROPRIETARY HORIZONTAL/VERTICAL LOUVE SLAT SCREENING - PRE-FINISHED TO SIMULATE TIMBER FINISH

22/06/2025 3:14:39 PM BIM 360://ESR Horsley Logistics Park08_Burly_Rd_detailed.rvt



PROJECT MANAGER

PROJECT: ESR HORSLEY LOGISTIC PARK
ADDRESS: 327-335 BURLEY ROAD, HORSLEY PARK NSW
PROJECT NUMBER: 200226

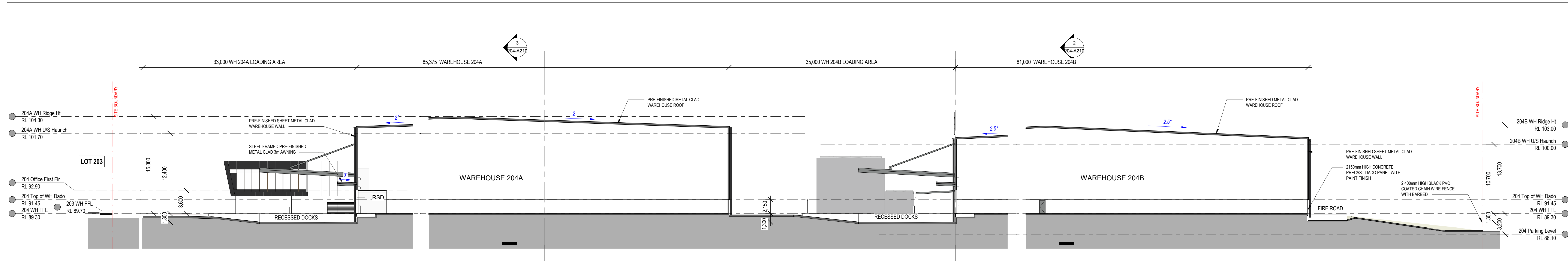
Rev	Description	Date
A	Development Application Issue	22.06.20

HL Architects Pty Ltd. This drawing is confidential and is subject to copyright. It may not be copied, used, reproduced or transmitted in any way or in any form without the express permission of HL Architects Pty Ltd.
HL Architects Pty Ltd A.C.N. 161 638 320
nominated architect: Koi Hong Lau
(Reg No. NSW #1559, QLD #6020, TAS #1101)
e admin@hlarchitects.com.au
t 02 9199 9942
m 0424 160 365
www.hlarchitects.com.au
Suite S3, 6 George St, North Strathfield NSW 2137

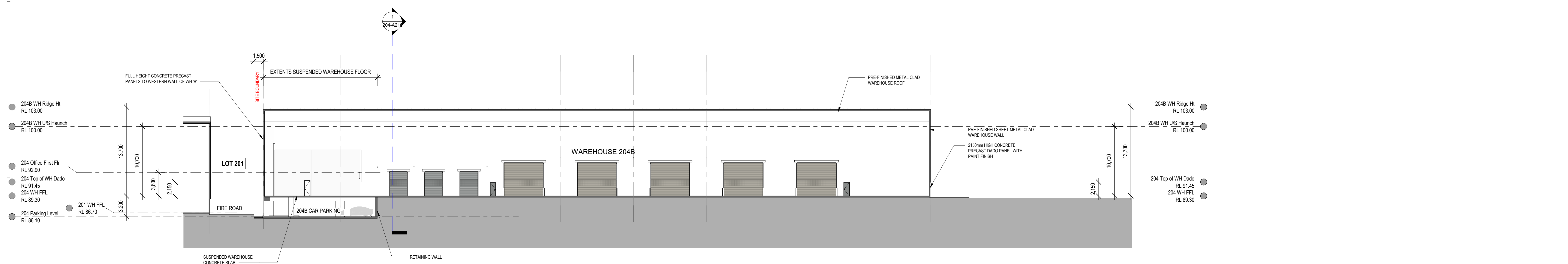


DEVELOPMENT APPLICATION

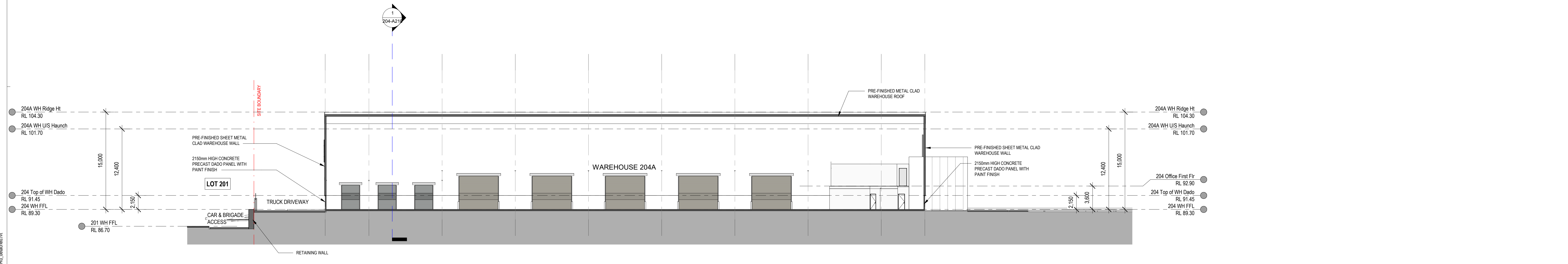
DRAWING TITLE	LOT 204 OFFICE ELEVATIONS	DRWN	HL
DRAWING NUMBER	200226 - DA - 204-A201	CHK	HL
		ISSUE	A



1 Lot 204 Cross Sections (Recessed Docks)
204-A100 1:250 @B1



2 Lot 204 Longitudinal Section (WH 204-B Basement Parking)
204-A100 1:250 @B1



3 Lot 204 Longitudinal Section (WH 204-A)
204-A110 1:250 @B1

22/06/2025 5:15:06 PM BIM 360://ESR_Horsley_Logistics_Park03_Burley_Rd_detached.rvt



PROJECT NUMBER

PROJECT ESR HORSLEY LOGISTIC PARK
ADDRESS 327-335 BURLEY ROAD
HORSLEY PARK NSW
PROJECT NUMBER 200226

Rev	Description	Date
A	Development Application Issue	22.06.20

HL Architects Pty Ltd. This drawing is confidential and is subject to copyright. It may not be copied, used, reproduced or transmitted in any way or in any form without the express permission of HL Architects Pty Ltd.

General Notes:
Architectural drawings to be read in conjunction with all other consultants' detailed drawings, specifications & reports.
Do not scale this drawing. Verify all dimensions on site.
Refer all discrepancies to HLA before commencing any work.

HL Architects Pty Ltd A.C.N. 161 638 320
nominated architect: KIM HONG LAU
(Reg No. NSW #1559, QLD #6003, TAS #1101)

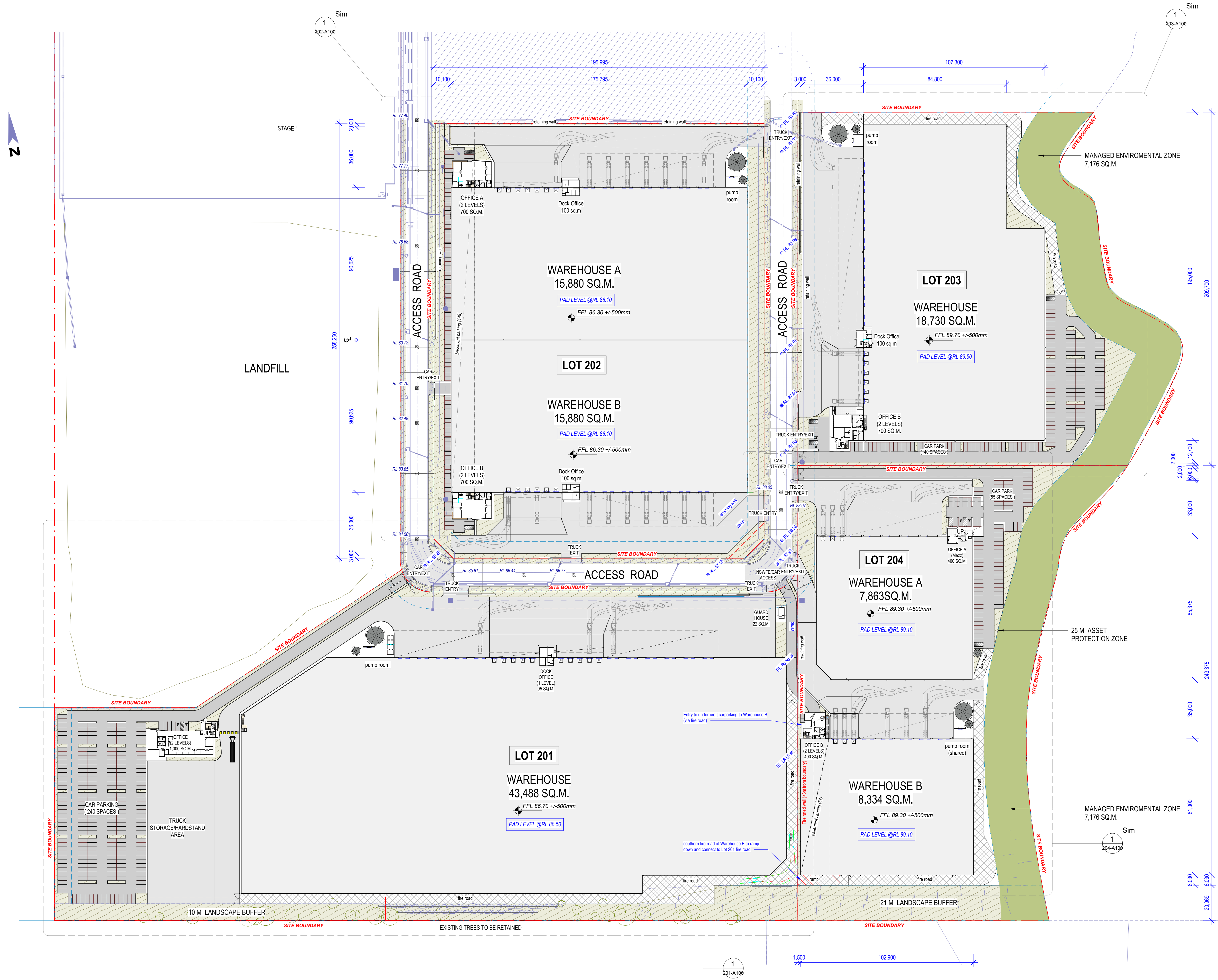
• admin@hlarchitects.com.au
t 02 9191 9942
m 0424 160 365
www.hlarchitects.com.au
Suite S3, 6 George St, North Strathfield NSW 2137



DEVELOPMENT APPLICATION

DRAWING TITLE LOT 204 WAREHOUSE SECTIONS
DRAWING NUMBER 200226 - DA - 204-A210

DRWN AB
CHK HL
ISSUE



2 Location Plan
 201-A200 1:10000 @B1

DEVELOPMENT TOTAL AREA	
TOTAL SITE AREA	207,968 sqm
TOTAL BUILDING AREA	114,492 sqm
TOTAL EFFICIENCY	55.13 %

DEVELOPMENT SUMMARY (LOT 201)	
SITE AREA	77,090 sqm
EFFICIENCY	57.88%
WAREHOUSE	43,488 sqm
MAIN OFFICE (2 LEVELS)	1,000 sqm
DOCK OFFICE (1 LEVEL)	95 sqm
GUARD HOUSE	22 sqm
TOTAL BUILDING AREA	44,605 sqm
CAR PARKING PROVIDED	240 Spaces
AWNING (15M)	2,000 sqm
AWNING (3M)	179 sqm
HEAVY DUTY PAVEMENT (H)	17,849 sqm
LIGHT DUTY PAVEMENT (L)	7,083 sqm

DEVELOPMENT SUMMARY (LOT 202)	
SITE AREA	50,483 sqm
EFFICIENCY	65.69 %
WAREHOUSE A	15,880 sqm
OFFICE & DOCK OFFICE A	700 sqm
WAREHOUSE B	15,880 sqm
OFFICE & DOCK OFFICE B	700 sqm
TOTAL BUILDING AREA	33,160 sqm
CAR PARKING PROVIDED	149 Spaces
HEAVY DUTY PAVEMENT (H)	11,230 sqm
LIGHT DUTY PAVEMENT (L)	3,900 sqm
SUSPENDED SLAB	2,550 sqm

DEVELOPMENT SUMMARY (LOT 203)	
SITE AREA (incl. Environmental Zone - 6,464 sqm)	40,295 sqm
EFFICIENCY	48.47 %
WAREHOUSE	18,730 sqm
OFFICE & DOCK OFFICE	800 sqm
TOTAL BUILDING AREA	19,530 sqm
CAR PARKING PROVIDED	140 Spaces
HEAVY DUTY PAVEMENT (H)	6,160 sqm
LIGHT DUTY PAVEMENT (L)	4,120 sqm

DEVELOPMENT SUMMARY (LOT 204)	
SITE AREA (incl. Environmental Zone - 7,176 sqm)	40,100 sqm
EFFICIENCY	42.39 %
WAREHOUSE A	7,863 sqm
OFFICE A	400 sqm
WAREHOUSE B	8,334 sqm
OFFICE B	400 sqm
TOTAL BUILDING AREA	16,997 sqm
CAR PARKING PROVIDED	149 Spaces
HEAVY DUTY PAVEMENT (H)	6,632 sqm
LIGHT DUTY PAVEMENT (L)	5,100 sqm
SUSPENDED SLAB	1,357 sqm

1 Estate Masterplan
 201-A200 1:1000 @B1

22/06/2024 4:51:02 PM BIM 360://ESR_Horsley_Logistics_Park08_Burley_Rd_detailed.rvt

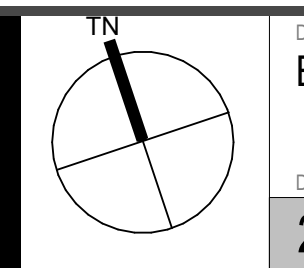


PROJECT: ESR HORSLEY LOGISTIC PARK
 ADDRESS: 327-335 BURLEY ROAD, HORSLEY PARK NSW
 PROJECT NUMBER: 200226

Rev	Description	Date
A	DA Issue	30.03.20
B	Development Application Issue	22.06.20

HL Architects Pty Ltd. This drawing is confidential and is subject to copyright. It may not be copied, used, reproduced or transmitted in any way or in any form without the express permission of HL Architects Pty Ltd.
 General Notes: Architectural drawings to be read in conjunction with all other consultants' detailed drawings, specifications & reports. Do not scale this drawing. Verify all dimensions on site. Refer all discrepancies to HLA before commencing any work.

HL Architects Pty Ltd A.C.N. 161 638 320
 nominated architect: Koi Hong LAU
 (Reg No. NS19 #1559, OLD #6020, TAS #1101)
 t 02 9195 9942
 m 0424 160 365
 www.hlarchitects.com.au
 Suite 53, 6 George St, North Strathfield NSW 2137



DEVELOPMENT APPLICATION

DRAWING TITLE: ESTATE MASTERPLAN
 DRAWING NUMBER: 200226 - DA - MS-A010
 DRAWN: AB
 CHK: HL
 ISSUE: B