



# Kemps Creek Logistics Park Stage 2 SSDA Report

## Landscape Concept

September 2024



SITE IMAGE  
Landscape Architects

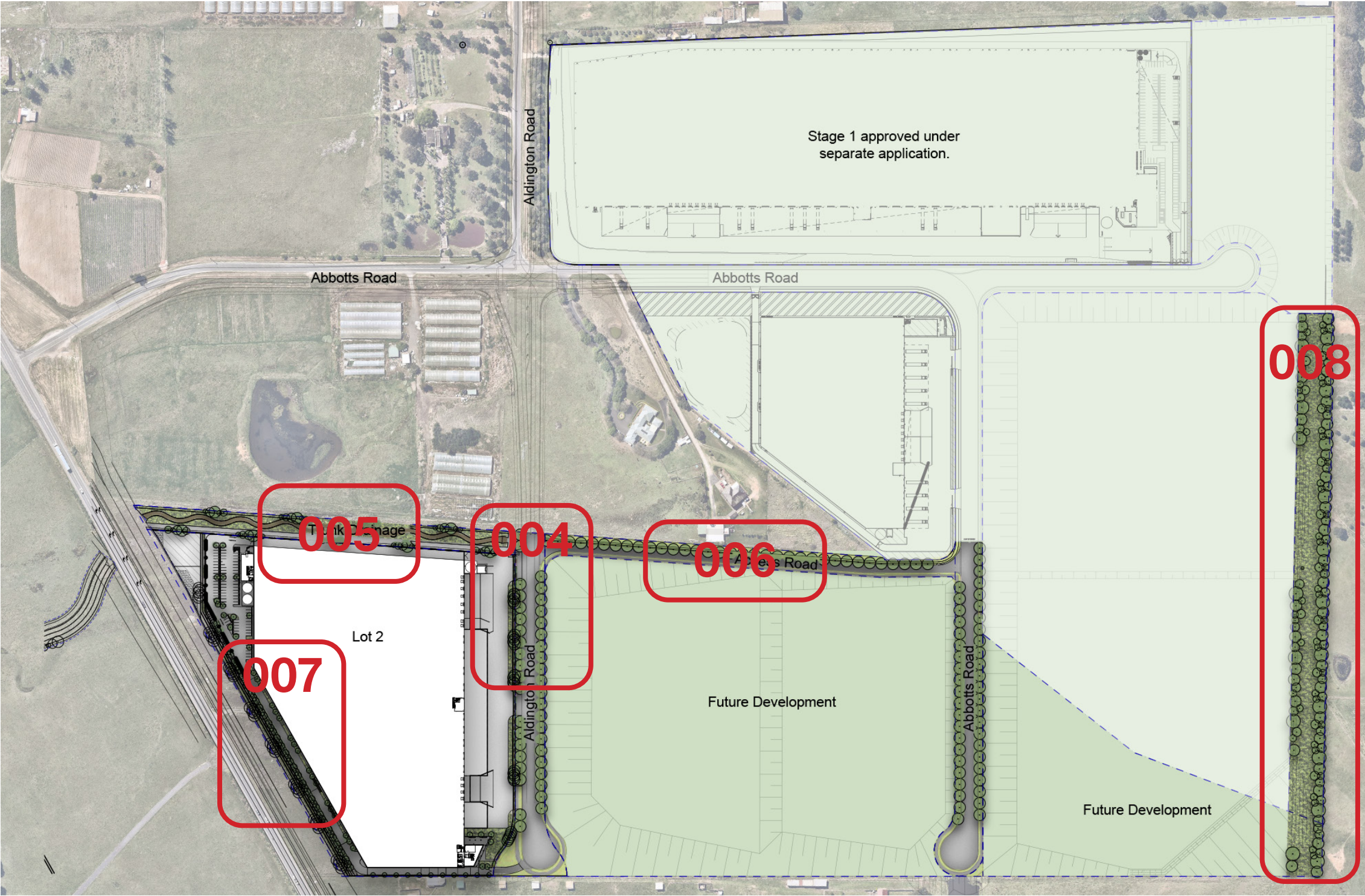
# Landscape Masterplan

The landscape concept masterplan demonstrates the vision for the Kemps Creek Logistics Park Stage 2. This Masterplan report is to be read with other consultants report including civil, and architectural.





# Landscape Areas



- 004 Estate Road
- 005 Trunk Drainage
- 006 Access Road
- 007 Mamre Road Frontage
- 008 Eastern Boundary



# Estate Road

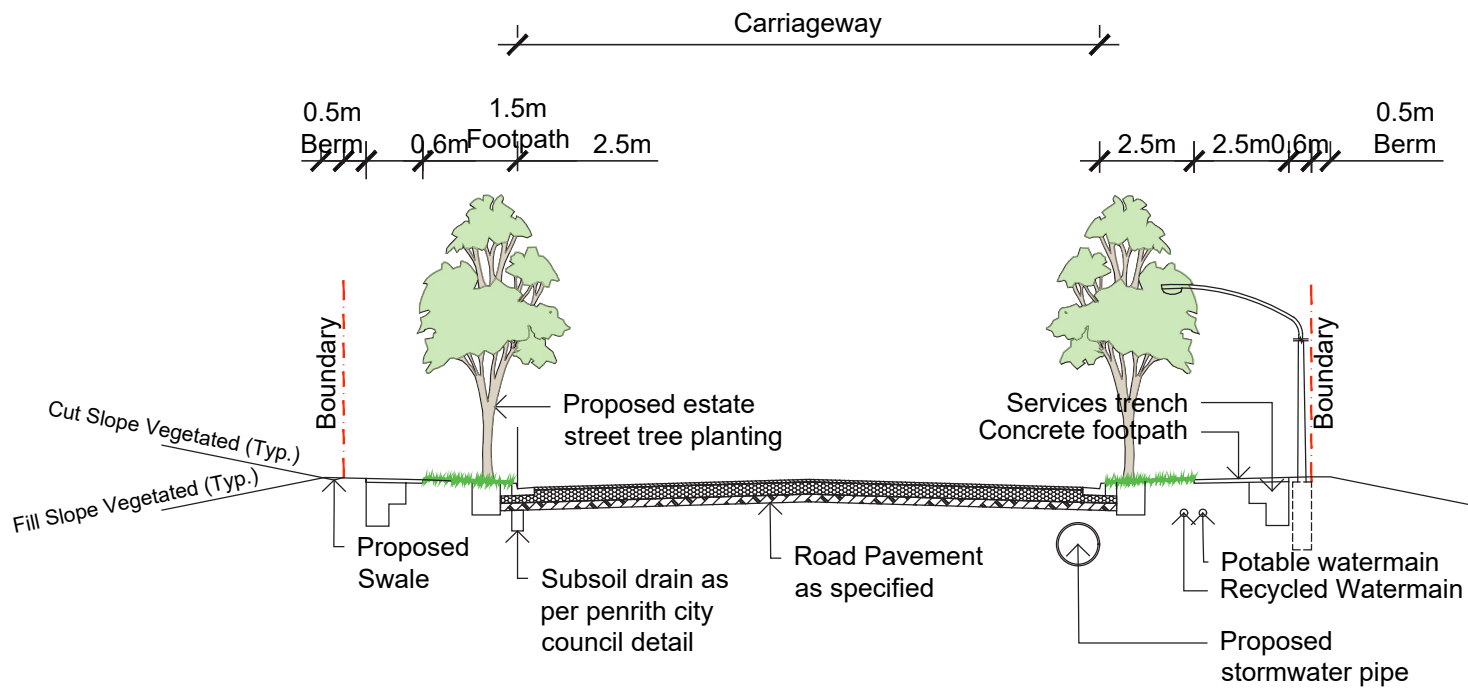
The Estate roads will feature street tree planting to both sides. A turf verge between the footpath and kerb allows for groups of trees. Proposed street tree species are *Corymbia maculata* at 100L pot size.



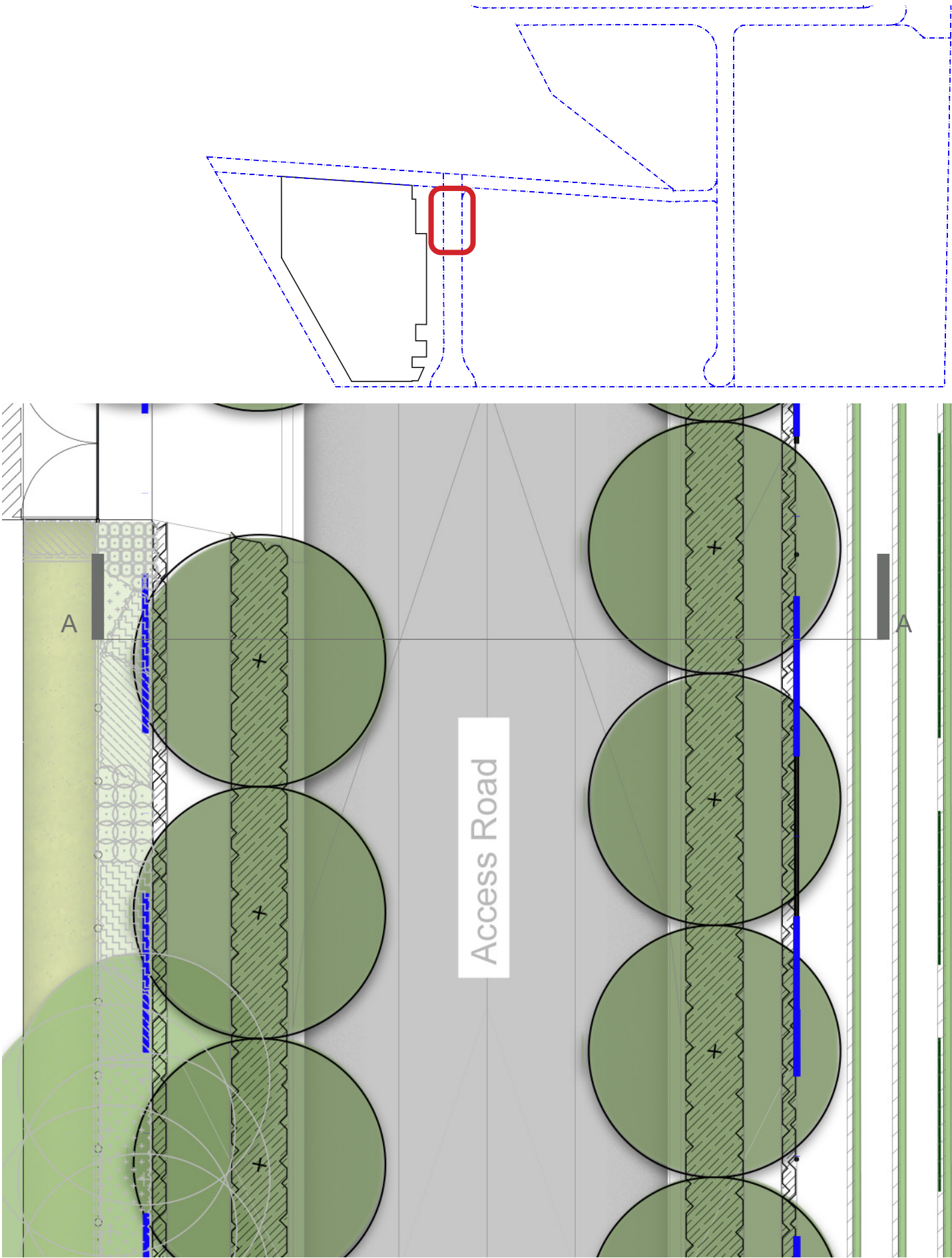
Street tree planting



*Corymbia maculata*



Section AA





# Trunk Drainage

The trunk drainage system to civil design will incorporate complementary landscaping on the base and embankments. The outer embankment canopy trees are proposed throughout.



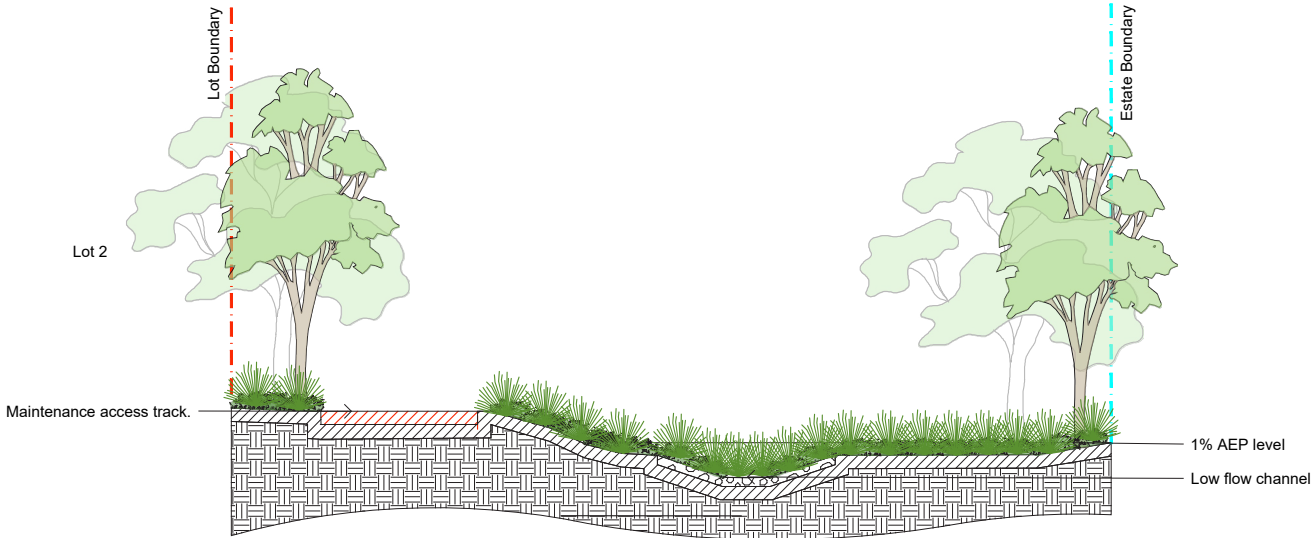
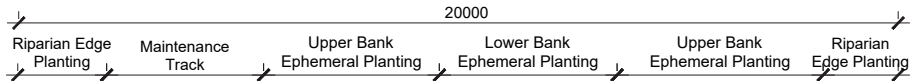
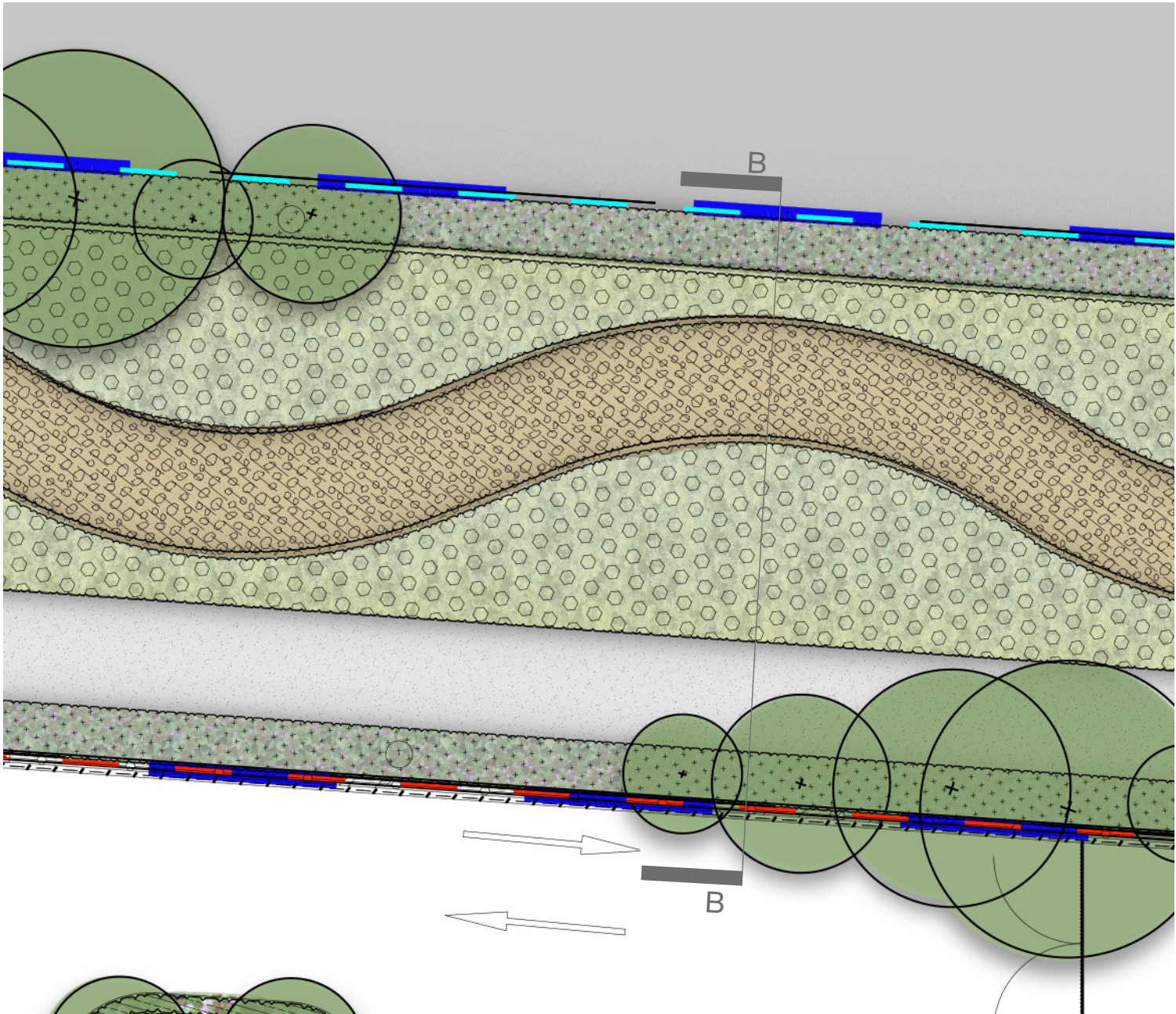
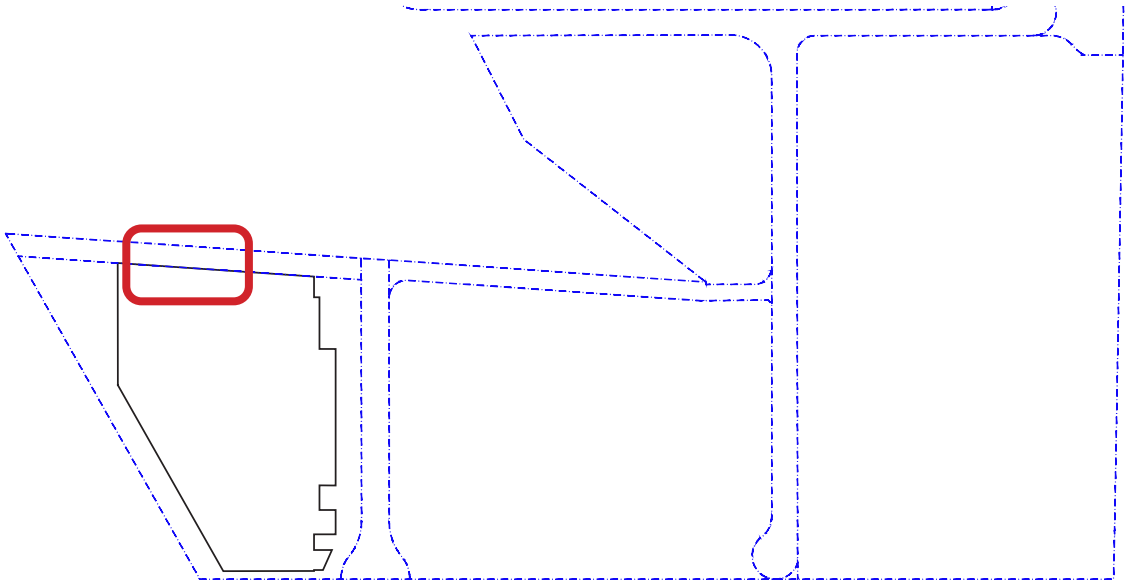
Riparian edge planting.



Riparian edge tree planting



Rock lined Lower Bank Ephemeral planting



Section BB



# Access Road

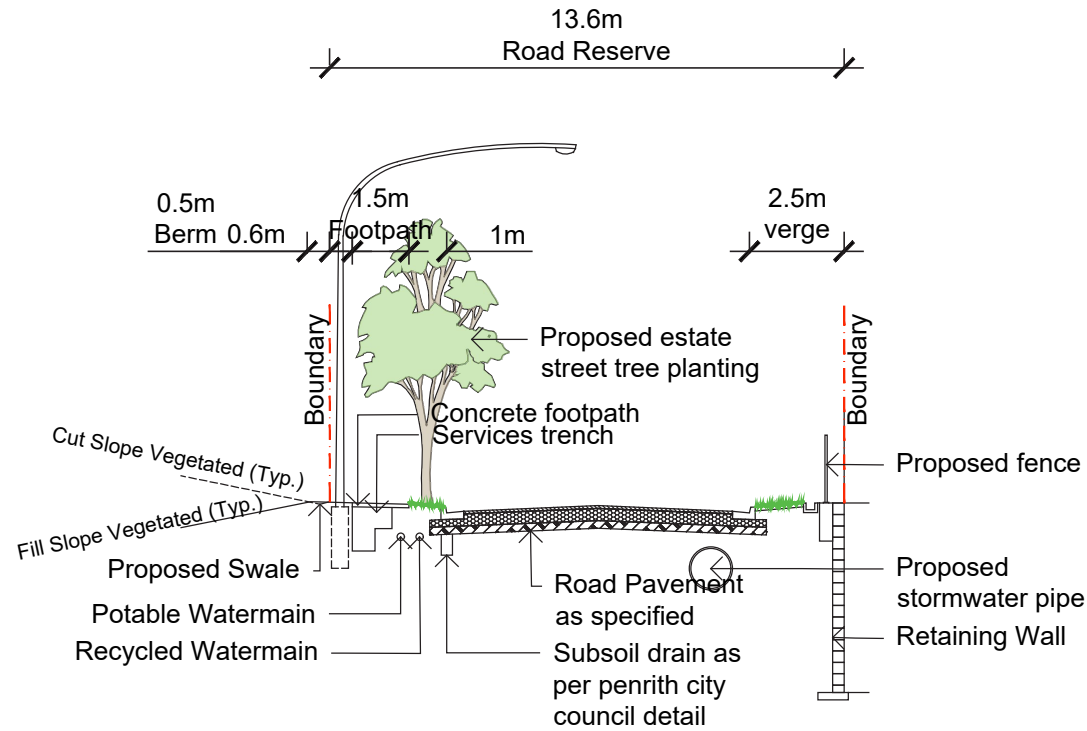
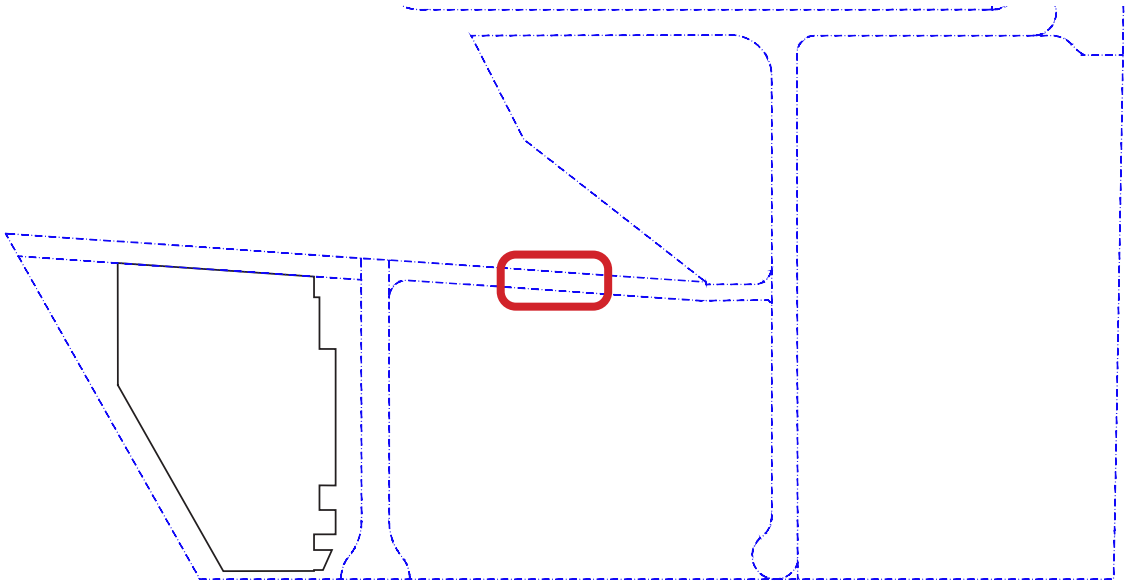
The Access Road will feature street tree planting to both sides. A turf verge between the footpath and kerb allows for groups of trees. Proposed street tree species are *Corymbia maculata* at 100L pot size.



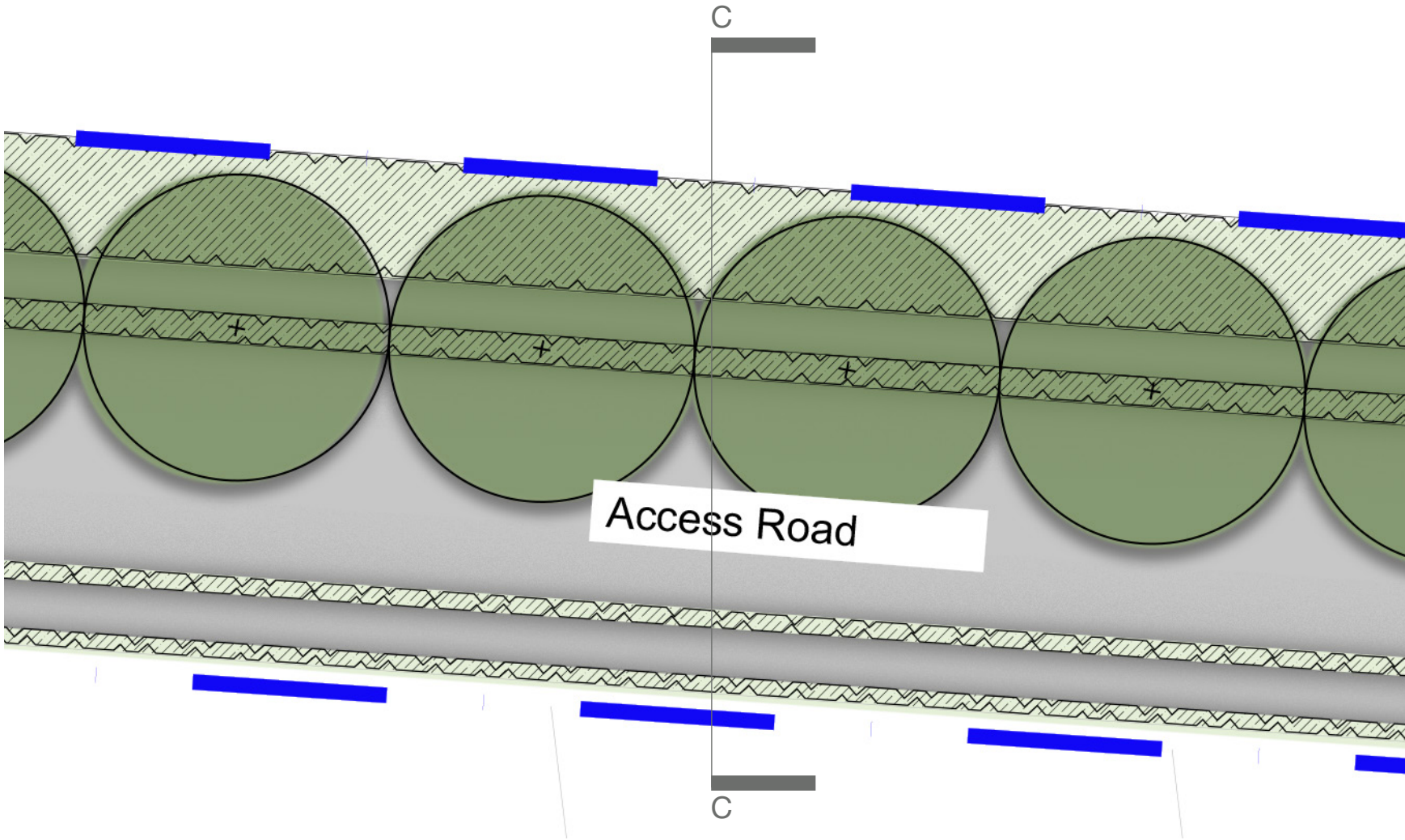
Street tree planting



Stree tree planting



Section CC



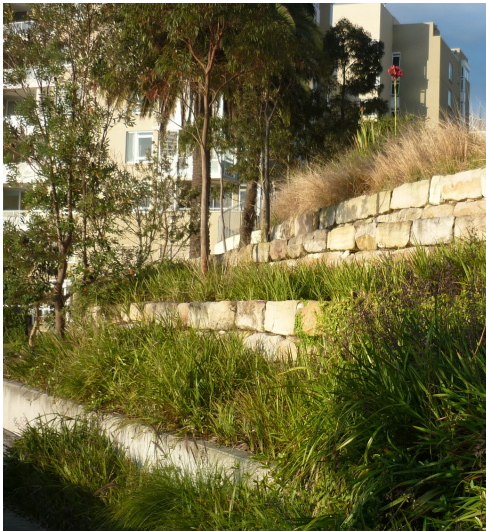


# Mamre Road Frontage

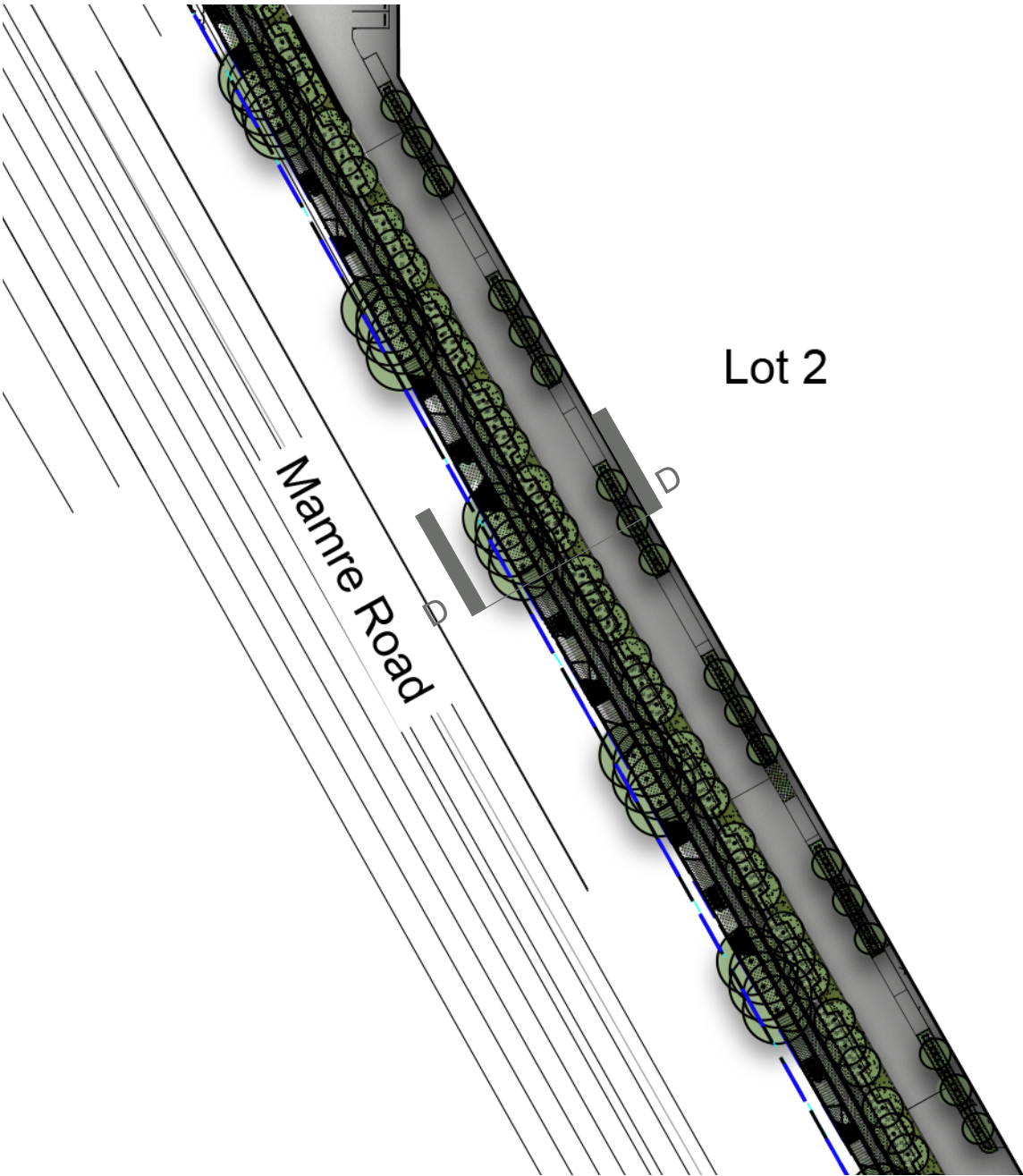
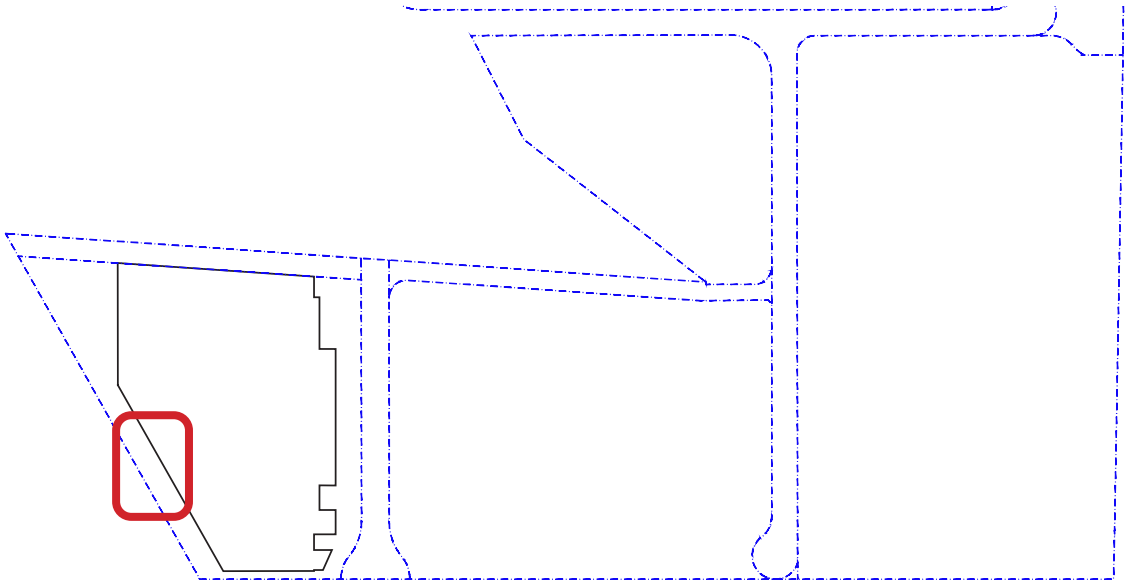
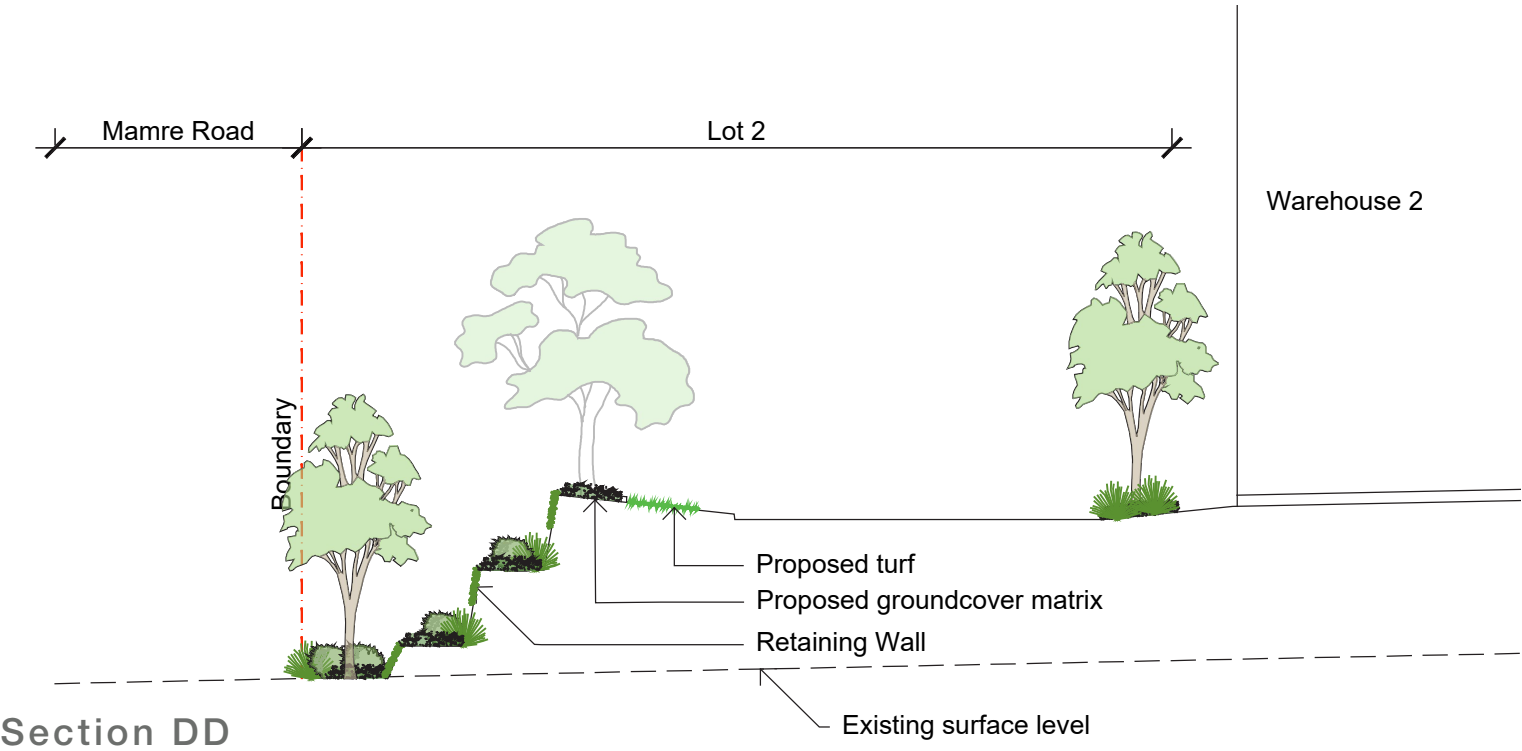
The Mamre Road Frontage features a series of retaining walls to Lot 2. Landscaping is proposed within the terraced retaining wall tiers. A mix of shrubs, grasses and groundcover planitng including cascading planting is proposed ot screen the faces of the walls.



Cascading plants to top of retaining walls



Landscaping to tiers of retaining walls



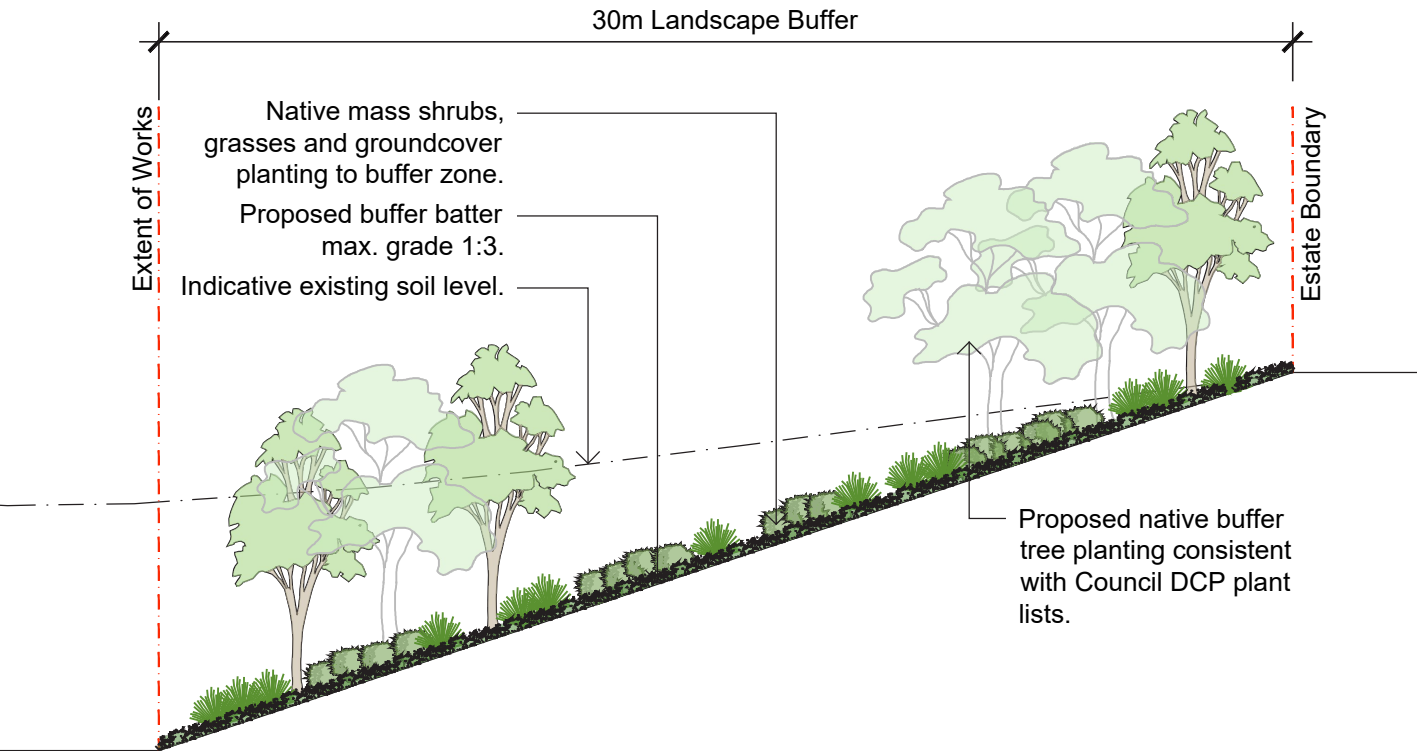


# Eastern Boundary

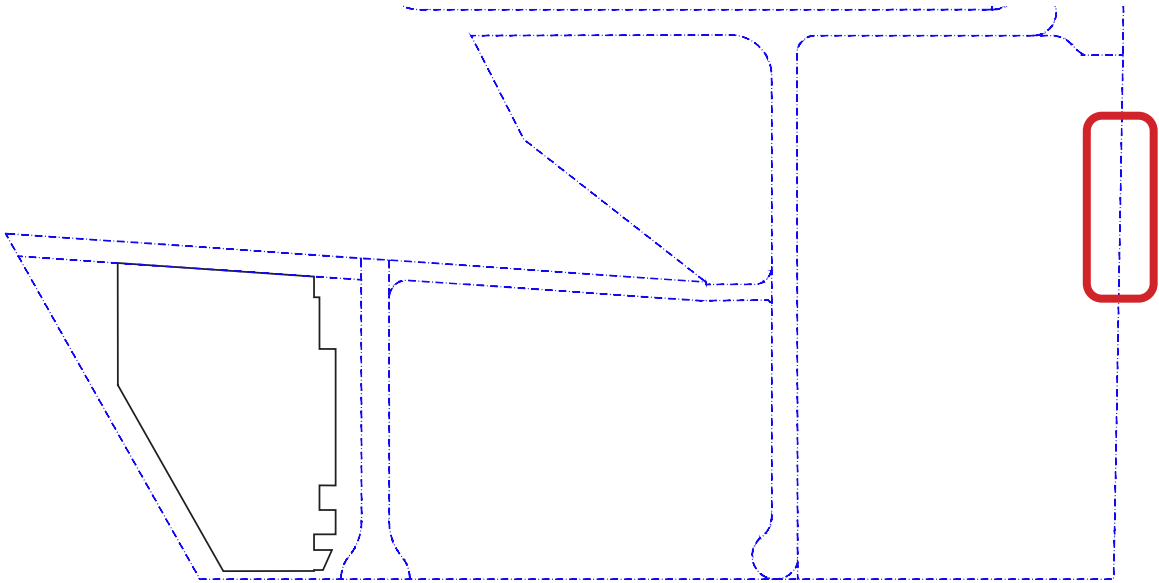
The eastern boundary will be planted with massed grasses and groundcovers. Native canopy trees in groups are proposed along the boundary within the landscaped set back. These trees will provide screening and canopy cover to the estate.



Native canopy tree screening to boundary      Massed native boundary planting



Section EE





# Eastern Boundary Planting

Proposed buffer planting shall be a mixture of native species primarily chosen to be low maintenance and suitable for the local growing conditions. These will be selected from the relevant council plant lists.

This planting will be designed to provide a healthy, native screening buffer to the estate. This area will be coordinated with the bushfire consultant to ensure compliance with any bushfire requirements while aiming to create an effective landscape outcome.

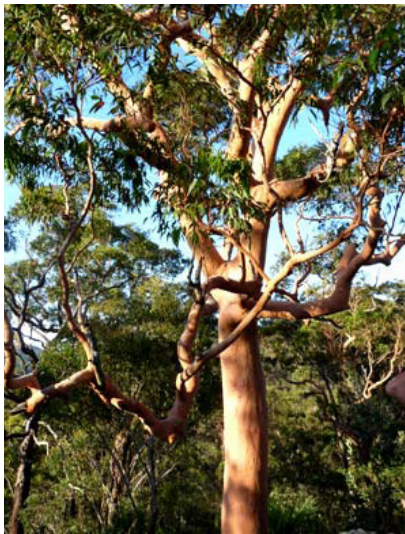
## Eastern Boundary

### Trees

<i>Angophora costata</i>	Grey Box	20 x 10
<i>Brachychiton populneus</i>	Kurrajong	10 x 5
<i>Corymbia maculata</i>	Forest Red Gum	25 x 15
<i>Callistemon viminalis</i>		8 x 4.5
<i>Eucalyptus moluccana</i>	Grey Box	25 x 8
<i>Eucalyptus pilularis</i>	Blackbutt	30 x 10
<i>Eucalyptus punctata</i>	Grey Gum	25 x 8
<i>Eucalyptus tereticornis</i>	Forest Red Gum	35 x 12
<i>Melaleuca decora</i>	Feather Honeymyrtle	12 x 5m
<i>Melaleuca styphelioides</i>	Prickly Paperbark	10 x 4m
<i>Waterhousea floribunda</i>	Weeping Lilly Pilly	10 x 8

### Understory Planting Matrix

<i>Bursaria spinosa</i>	Blackthorn	4 x 3
<i>Callistemon 'Endeavour'</i>	Bottlebrush	2.5 x 2.5
<i>Carpobrotus glaucescens</i>	Pigface	0.3 x 2
<i>Callistemon viminalis 'Little John'</i>	Little John Bottlebrush	0.8 x 8
<i>Hardenbergia violacea</i>	Purple Coral Pea	0.2 x 3
<i>Lomandra 'Tanika'</i>	Tanika Mat-Rush	0.6 x 0.6
<i>Poa labillardieri</i>	Poa	1 x 0.5
<i>Westringia fruticosa</i>	Coastal Rosemary	1.2 x 1.2



*Angophora costata*



*Brachychiton populneus*



*Corymbia maculata*



*Eucalyptus pilularis*



*Eucalyptus tereticornis*



*Melaleuca decora*



*Melaleuca styphelioides*



*Waterhousea floribunda*



*Bursaria spinosa*



*Callistemon 'Endeavour'*



*Lomandra 'Tanika'*



*Westringia fruticosa*

## Section EE



# Indicative Plant Schedule

Proposed planting shall be a mixture of native and exotic species primarily chosen to be low maintenance and suitable for the local growing conditions.  
Proposed trees will be a combination of both evergreen and deciduous species, with deciduous positioned to allow for solar access in the winter and shade in the summer.

### Street Trees

<i>Corymbia maculata</i>	Spotted Gum	20 x 8
--------------------------	-------------	--------

### Trees

<i>Eucalyptus moluccana</i>	Grey Box	20 x 8
<i>Eucalyptus tereticornis</i>	Forest Red Gum	30 x .8
<i>Lagerstroemia indica</i>	Crepe Myrtle	8 x 4m
<i>Magnolia 'Little Gem'</i>		4 x 2.5m
<i>Melaleuca decora</i>	Feather Honeymyrtle	12 x 5m
<i>Melaleuca styphelioides</i>	Prickly Paperbark	10 x 4m

### Shrubs

<i>Carissa macrocarpa 'Desert Star'</i>	Natal Plum	2 x 1m
<i>Callistemon 'Endavour'</i>	Bottlebrush	2.5 x 2.5
<i>Callistemon viminalis 'Little John'</i>	Little John Bottlebrush	.8 x 8
<i>Correa alba</i>	White Correa	1 x 1m
<i>Loropetalum 'Plum Gorgeous'</i>		1.5 x 2m
<i>Melaleuca 'Claret Tops'</i>	Honey Myrtle	1 x 1m
<i>Raphiolepis 'Oriental Pearl'</i>	Indian Hawthorne	.8 x 1m
<i>Westringia sp</i>	Coastal Rosemary	1.2 x 1.2
<i>Kalanchoe 'Silver Spoons'</i>		1.2 x 1.2m

### Grasses and Groundcovers

<i>Adenanthos cuneatus 'Coral Carpet'</i>	Jug Flower	.2 x 1.5m
<i>Carpobrotus glaucescens</i>	Pigface	.3 x 2m
<i>Blue Fescue</i>	Festuca glauca	.4 x .4
<i>Gazania tomentosa</i>	Silver Leaf Gazania	.1 x 1
<i>Grevillea 'Poorinda Royal Mantle'</i>		.1 x 1m
<i>Hardenbergia violacea</i>	Purple Coral Pea	.2 x 3m
<i>Hibbertia scandens</i>		.3 x 1m
<i>Liriope 'Evergreen Giant'</i>		.6 x .6
<i>Lomandra 'Tanika'</i>	Tanika Mat-Rush	.6 x .6
<i>Myoporum parvifolium</i>	Creeping Boobialla	
<i>Pennisetum Rubrum</i>	Fountain Grass	.9 x .6
<i>Society Garlic</i>	Tulbaghia violacea	.3 x.3



*Corymbia maculata*



*Eucalyptus moluccana*



*Melaleuca decora*



*Magnolia 'Little Gem'*



*Raphiolepis 'Oriental Pearl'*



*Carpobrotus glaucescens*



*Correa alba*



*Kalanchoe 'Silver Spoons'*



*Liriope 'Evergreen Giant'*



*Hardenbergia violacea*



*Lomandra 'Tanika'*



*Westringia sp*