

### LEGEND

- SITE BOUNDARY
- - - EXTENT OF APZ BOUNDARY
- ENVIRONMENTAL ZONE MANAGED BY OTHERS
- LANDSCAPE BUFFER MANAGED BY OTHERS
- PROPOSED TREE PLANTING
- PROPOSED STREET TREE PLANTING AT 10m CENTRES.
- PROPOSED SHRUB PLANTING
- GRASSES & GROUNDCOVERS. REFER TO DETAIL PLANS.
- BIO-RETENTION BASIN GRASSES. REFER TO DETAIL PLANS.
- RETAINING WALL TO CIVIL ENGINEER'S DETAILS
- EXISTING RETAINING WALLS BY OTHERS
- GRASSED VERGE & FOOTPATH TO ACCESS ROAD
- PROPOSED ESTATE ROAD
- PROPOSED HARDSTAND
- PROPOSED WAREHOUSES
- PROPOSED LEVELS
- FINISHED FLOOR LEVELS

Drawing Title:  
**Overall Landscape Master Plan**  
 DWG No:  
**SSD-01**

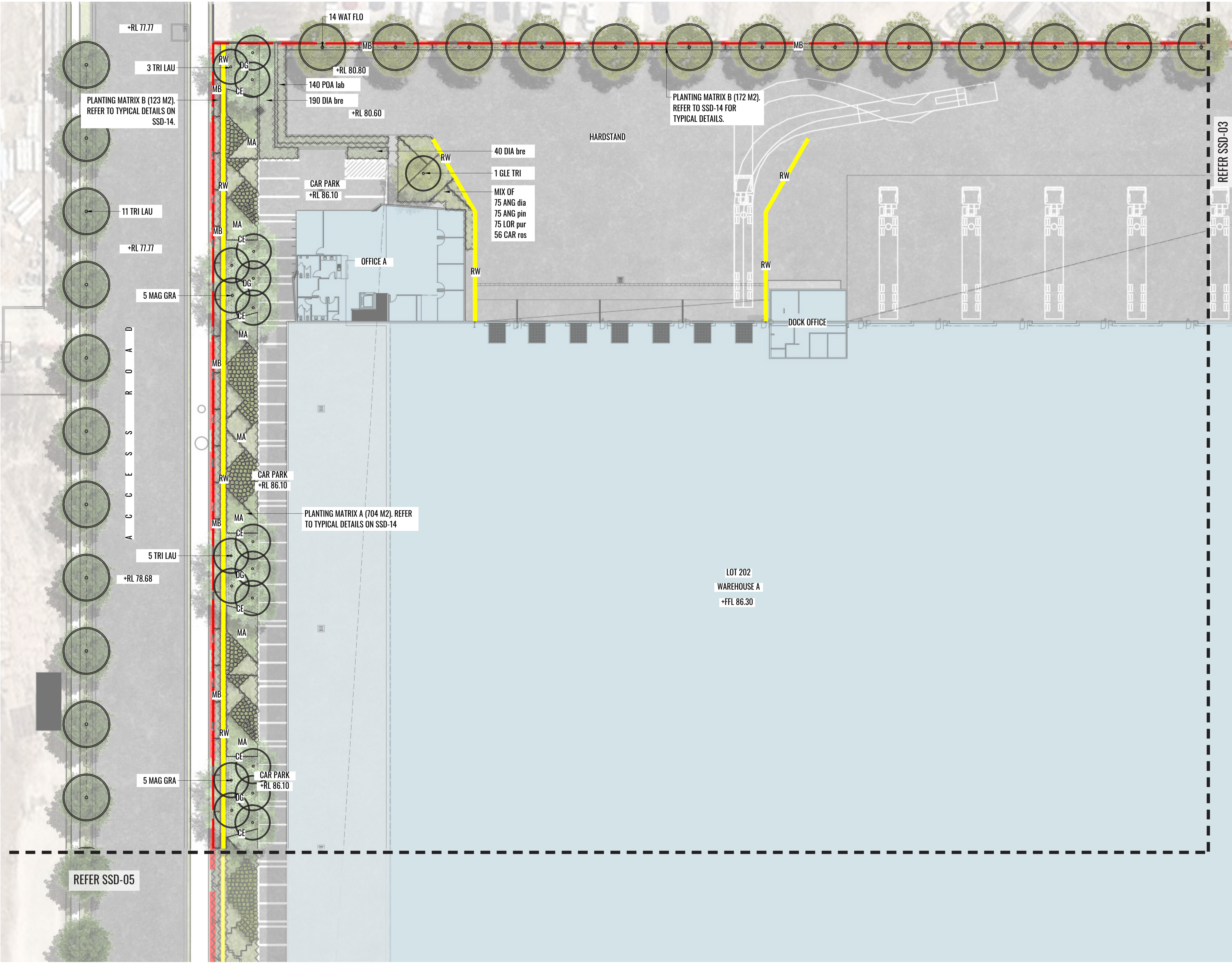
**GEOSCAPES**  
 LANDSCAPE ARCHITECTS  
 Suite 215, 284 Victoria Ave, Chatswood NSW 2067 Ph. (02) 9411 1485  
 www.geoscapes.com.au  
 ABN 84 620 205 781 ACN 620 205 781

Architect:

Client:

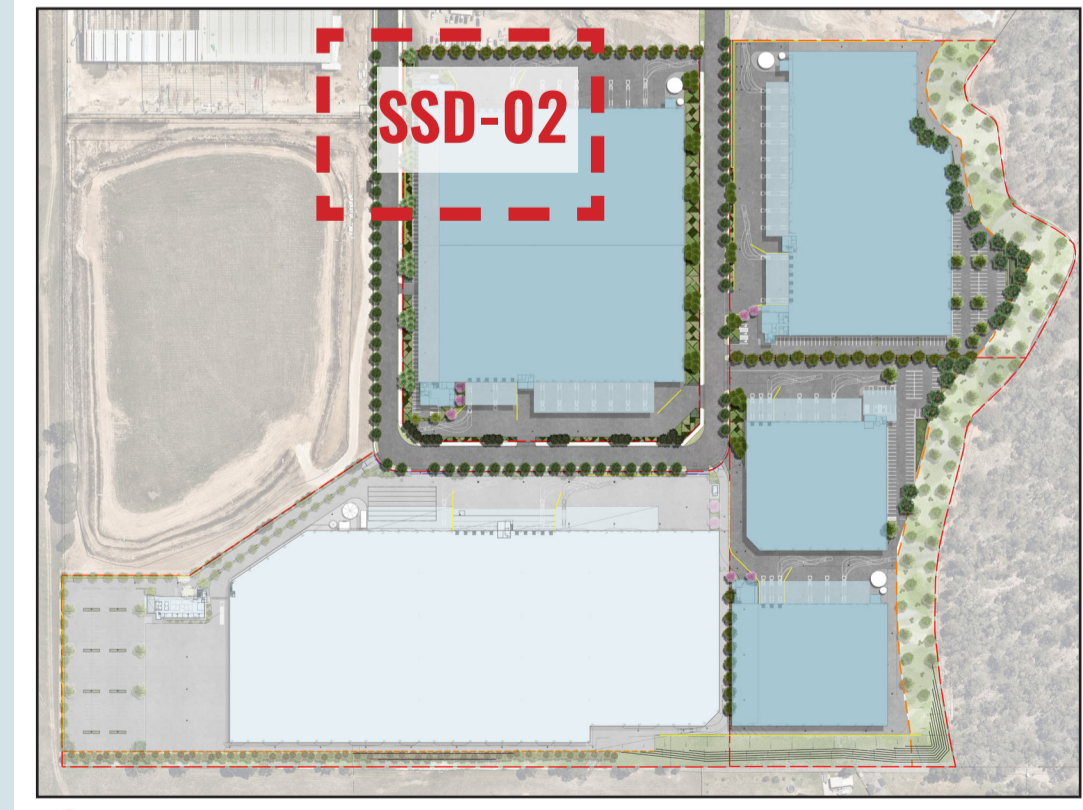
Scale:  
 1:1000 @ A1  
 1:2000 @ A3  
 Date:  
 15.06.20  
 Job Number:  
 200224  
 North:  
  
 Project:  
**ESR Horsley Logistics Park**  
 327-335 Burley Road, NSW 2175

Revision		FOR STATE SIGNIFICANT DEVELOPMENT		
Rev	Date	Description	Drawn	Checked
A	12.03.20	DRAFT FOR REVIEW	SB	BG
B	30.03.20	FOR SSD APPLICATION	SB	BG
C	15.06.20	FOR SSD APPLICATION	SB	BG



**LEGEND**

- SITE BOUNDARY
- EXTENT OF APZ BOUNDARY
- ENVIRONMENTAL ZONE MANAGED BY OTHERS
- LANDSCAPE BUFFER MANAGED BY OTHERS
- PROPOSED TREE PLANTING
- PROPOSED STREET TREE PLANTING AT 10M CENTRES.
- PROPOSED SHRUB PLANTING
- GRASSES & GROUNDCOVERS. REFER TO DETAIL PLANS.
- MA PLANTING MATRIX A. REFER TO PLANS & TYPICAL DETAILS.
- MB PLANTING MATRIX B. REFER TO PLANS & TYPICAL DETAILS.
- BR BIO-RETENTION BASIN GRASSES. REFER TO DETAIL PLANS.
- RW RETAINING WALL TO CIVIL ENGINEER'S DETAILS
- EW EXISTING RETAINING WALLS BY OTHERS
- GRASSED VERGE & FOOTPATH TO ACCESS ROAD
- CE CONCRETE EDGE
- DG DECO GRANITE
- GRATED DRAIN TO ENGINEER'S DETAIL
- PIT TO ENGINEER'S DETAIL
- +RL 80.20 PROPOSED LEVELS
- +FFL 80.20 FINISHED FLOOR LEVELS



KEY PLAN

Drawing Title:  
**Landscape Detail Plan - Sheet 1**  
 DWG No:  
**SSD-02**

**GEOSCAPES**  
 LANDSCAPE ARCHITECTS  
 Suite 215, 284 Victoria Ave, Chatswood NSW 2067 Ph. (02) 9411 1485  
 www.geoscapes.com.au  
 ABN 84 620 205 781 ACN 620 205 781

Architect:  
**hla** architects

Client:  
**ESR**

Scale:  
 1:250 @ A1  
 1:500 @ A3

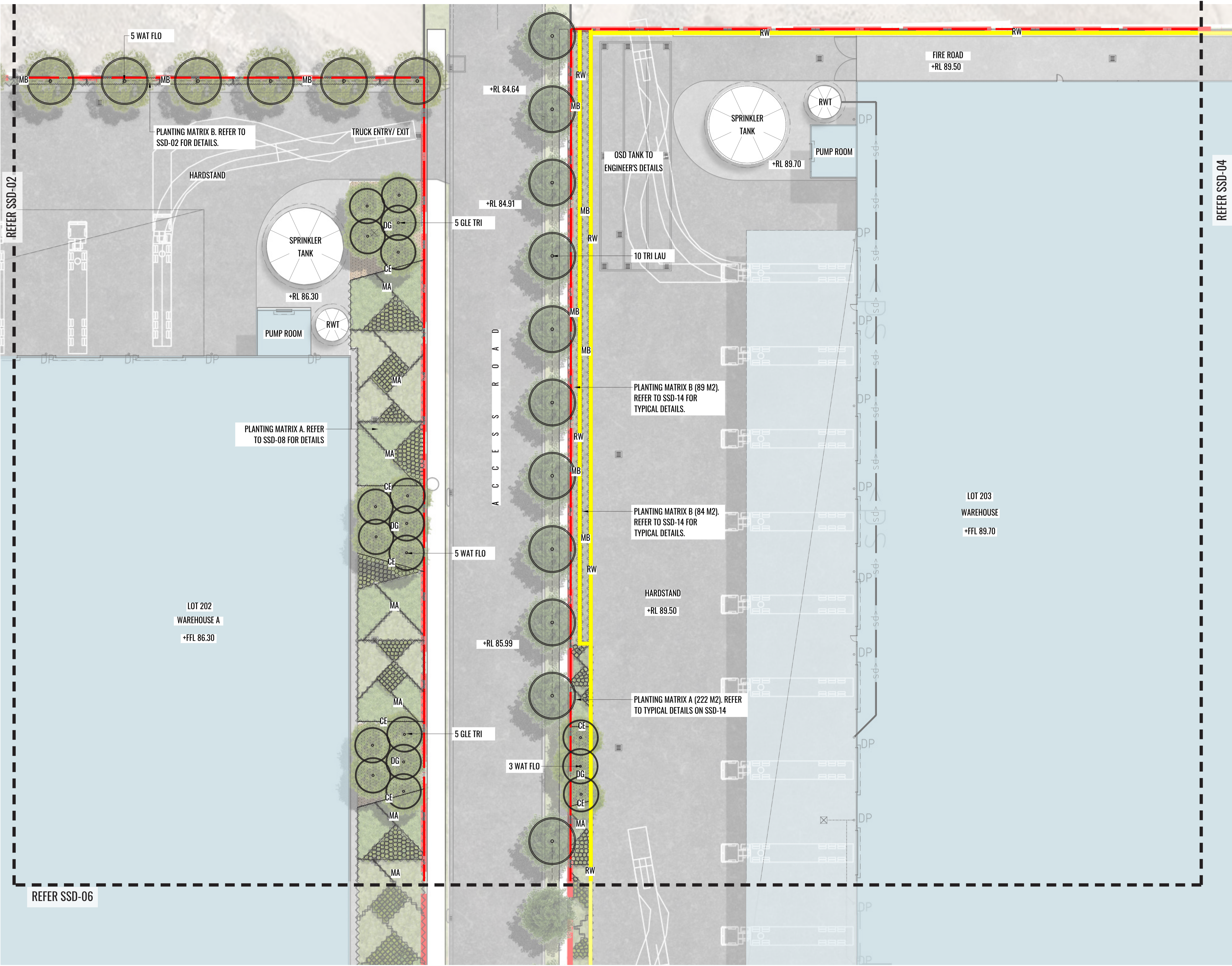
Date:  
 15.06.20

Job Number:  
 200224

North:

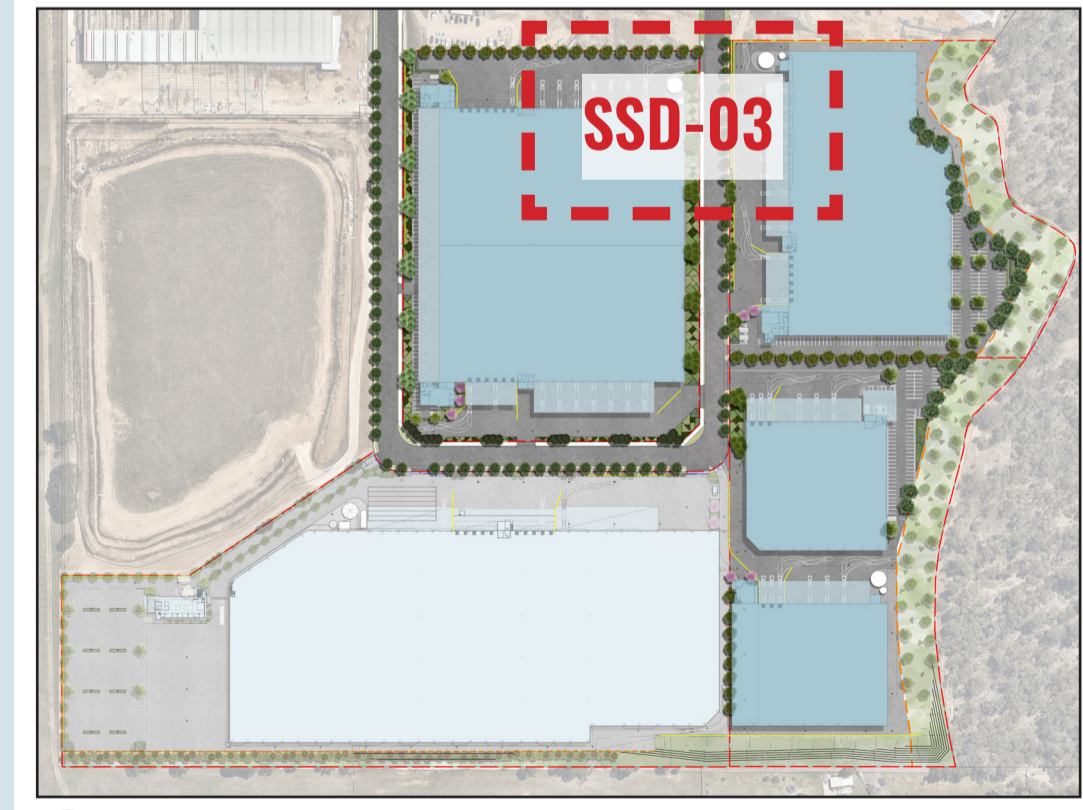
Project:  
**ESR Horsley Logistics Park**  
 327-335 Burley Road, NSW 2175

Revision		FOR STATE SIGNIFICANT DEVELOPMENT		
Rev	Date	Description	Drawn	Checked
A	12.03.20	DRAFT FOR REVIEW	SB	BG
B	30.03.20	FOR SSD APPLICATION	SB	BG
C	15.06.20	FOR SSD APPLICATION	SB	BG



### LEGEND

- SITE BOUNDARY
- EXTENT OF APZ BOUNDARY
- ENVIRONMENTAL ZONE MANAGED BY OTHERS
- LANDSCAPE BUFFER MANAGED BY OTHERS
- PROPOSED TREE PLANTING
- PROPOSED STREET TREE PLANTING AT 10M CENTRES.
- PROPOSED SHRUB PLANTING
- GRASSES & GROUNDCOVERS. REFER TO DETAIL PLANS.
- MA PLANTING MATRIX A. REFER TO PLANS & TYPICAL DETAILS.
- MB PLANTING MATRIX B. REFER TO PLANS & TYPICAL DETAILS.
- BR BIO-RETENTION BASIN GRASSES. REFER TO DETAIL PLANS.
- RW RETAINING WALL TO CIVIL ENGINEER'S DETAILS
- EW EXISTING RETAINING WALLS BY OTHERS
- GRASSED VERGE & FOOTPATH TO ACCESS ROAD
- CE CONCRETE EDGE
- DG DECO GRANITE
- GRATED DRAIN TO ENGINEER'S DETAIL
- PIT TO ENGINEER'S DETAIL
- +RL 80.20 PROPOSED LEVELS
- +FFL 80.20 FINISHED FLOOR LEVELS



Drawing Title:  
**Landscape Detail Plan - Sheet 2**  
 DWG No:  
**SSD-03**

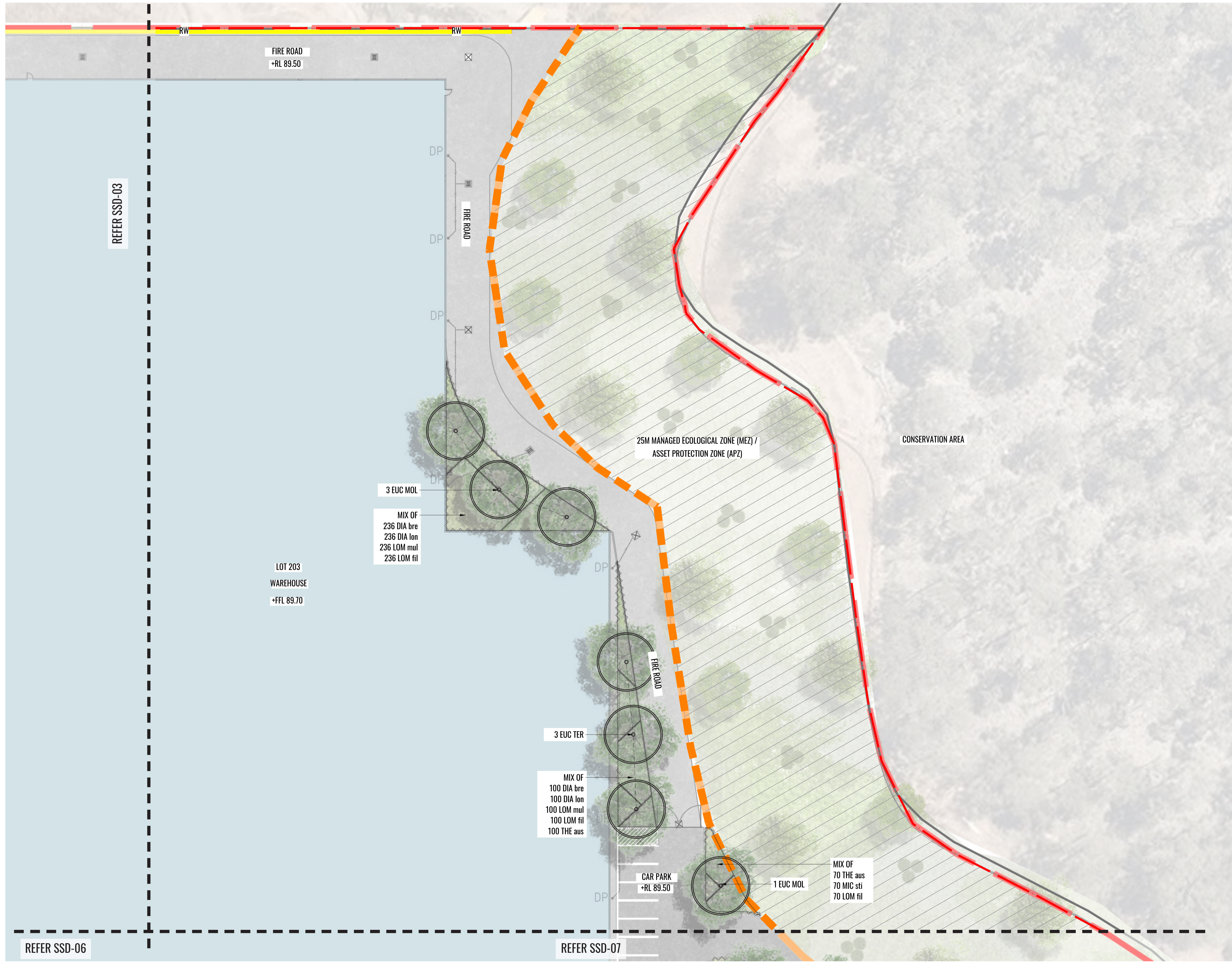
**GEOSCAPES**  
 LANDSCAPE ARCHITECTS  
 Suite 215, 284 Victoria Ave, Chatswood NSW 2067 Ph. (02) 9411 1485  
 www.geoscapes.com.au  
 ABN 84 620 205 781 ACN 620 205 781

Architect:  
**hla** architects

Client:  
**ESR**

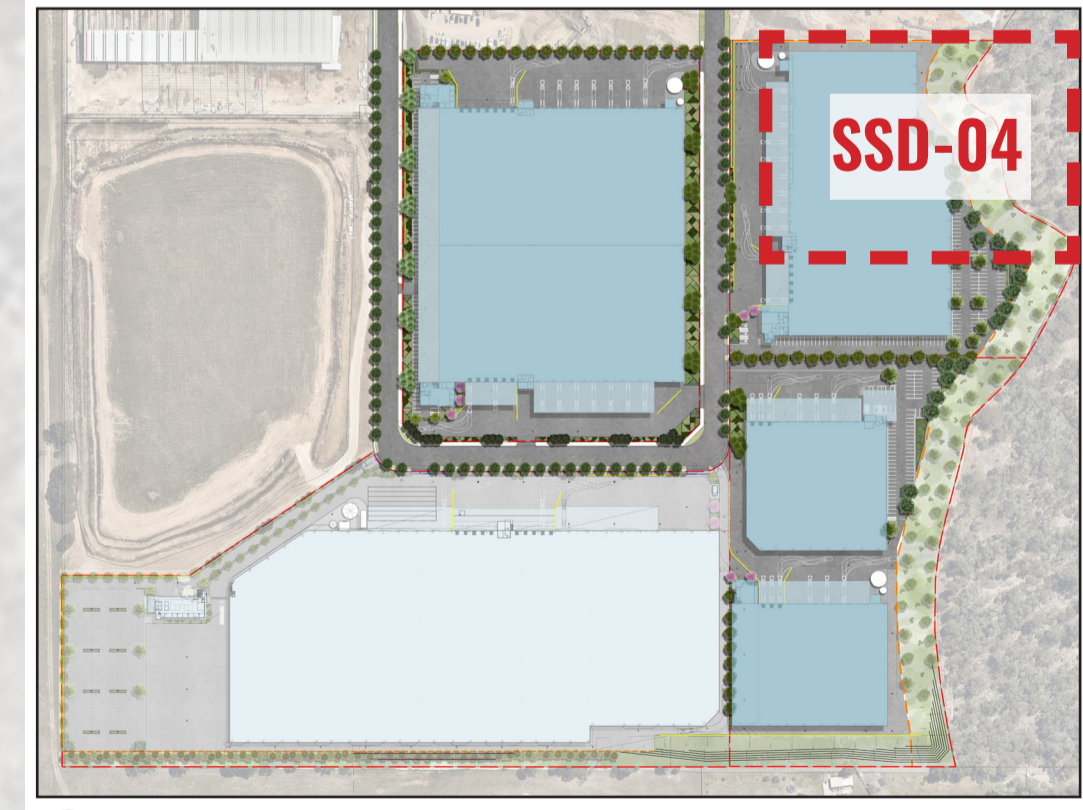
Scale: 1:250 @ A1  
 1:500 @ A3  
 Date: 15.06.20  
 Job Number: 200224  
 Project: ESR Horsley Logistics Park  
 327-335 Burley Road, NSW 2175

Revision		FOR STATE SIGNIFICANT DEVELOPMENT		
Rev	Date	Description	Drawn	Checked
A	12.03.20	DRAFT FOR REVIEW	SB	BG
B	30.03.20	FOR SSD APPLICATION	SB	BG
C	15.06.20	FOR SSD APPLICATION	SB	BG



**LEGEND**

- SITE BOUNDARY
- EXTENT OF APZ BOUNDARY
- ENVIRONMENTAL ZONE MANAGED BY OTHERS
- LANDSCAPE BUFFER MANAGED BY OTHERS
- PROPOSED TREE PLANTING
- PROPOSED STREET TREE PLANTING AT 10M CENTRES.
- PROPOSED SHRUB PLANTING
- GRASSES & GROUNDCOVERS. REFER TO DETAIL PLANS.
- MA PLANTING MATRIX A. REFER TO PLANS & TYPICAL DETAILS.
- MB PLANTING MATRIX B. REFER TO PLANS & TYPICAL DETAILS.
- BR BIO-RETENTION BASIN GRASSES. REFER TO DETAIL PLANS.
- RW RETAINING WALL TO CIVIL ENGINEER'S DETAILS
- EW EXISTING RETAINING WALLS BY OTHERS
- GRASSED VERGE & FOOTPATH TO ACCESS ROAD
- CE CONCRETE EDGE
- DG DECO GRANITE
- GRATED DRAIN TO ENGINEER'S DETAIL
- PIT TO ENGINEER'S DETAIL
- +RL 80.20 PROPOSED LEVELS
- +FFL 80.20 FINISHED FLOOR LEVELS



KEY PLAN

Drawing Title:  
**Landscape Detail Plan - Sheet 3**  
 DWG No:  
**SSD-04**

**GEOSCAPES**  
 LANDSCAPE ARCHITECTS  
 Suite 215, 284 Victoria Ave, Chatswood NSW 2067 Ph. (02) 9411 1485  
 www.geoscapes.com.au  
 ABN 84 620 205 781 ACN 620 205 781

Architect:  
**hla** architects

Client:  
**ESR**

Scale: 1:250 @ A1, 1:500 @ A3  
 Date: 15.06.20  
 Job Number: 200224  
 Project: **ESR Horsley Logistics Park**  
 327-335 Burley Road, NSW 2175

Revision		FOR STATE SIGNIFICANT DEVELOPMENT		
Rev	Date	Description	Drawn	Checked
A	12.03.20	DRAFT FOR REVIEW	SB	BG
B	30.03.20	FOR SSD APPLICATION	SB	BG
C	15.06.20	FOR SSD APPLICATION	SB	BG