

# 212TH BUSINESS PARK

SEATTLE - PUGET SOUND  
KENT VALLEY

S. 212th St & 84th Ave S  
Kent, WA 98032



FOR LEASE

10,500 - 35,873 SF



LEASED BY





## PROPERTY OVERVIEW

212 Business Park encompasses ±1,037,673 square feet of multi-tenant industrial space with a “Main and Main” location in the Puget Sound industrial submarket of the Kent Valley. The Kent Valley is the 4th largest area for manufacturing and distribution in the US and the 2nd largest area on the west coast.

212th Business Park offers frontage spaces with great visibility only 15 miles to Seattle or Bellevue CBD. Suites range from ±10,000 square feet to ±145,000 square feet, offering great flexibility for businesses large and small, start-up and mature.

## 212TH BUSINESS PARK

Premier North Kent Valley Location

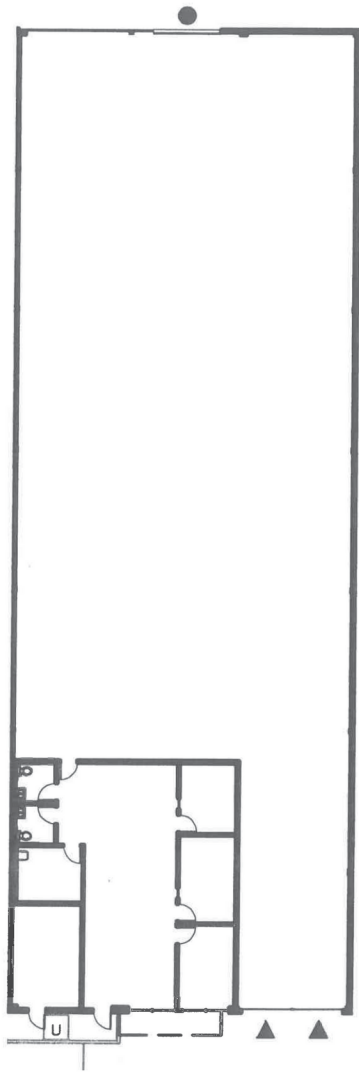
5 Miles to SeaTac Airport

19 Miles to Ports of Seattle and Tacoma

Minimum of 2 Dock-High Doors and 1 Grade-Level Door

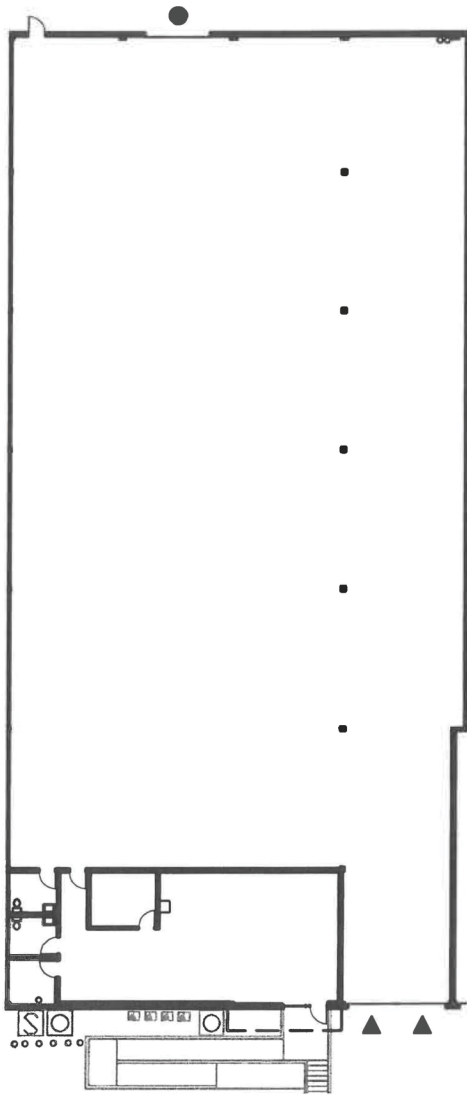
Excellent Access to Highway 167, I-5 & I-405

Felxible Configurations From 10,000 SF and Up



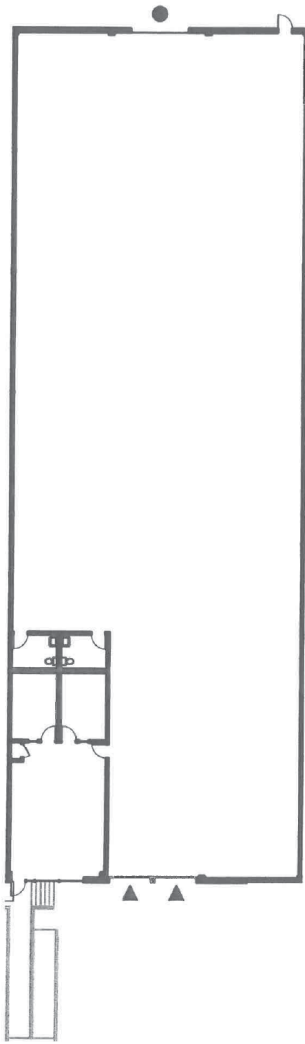
## 212TH BUSINESS PARK - BUILDING A # 106

Shell SF	10,500
Office SF	1,553
Clear Height	20'
Dock-High Doors	2
Grade-Level Doors	1
Available	August 1, 2026



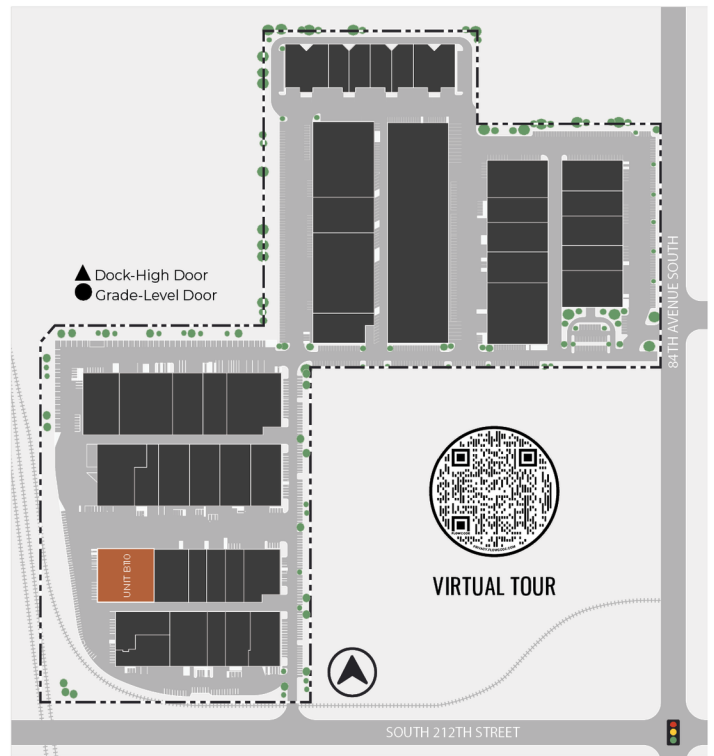
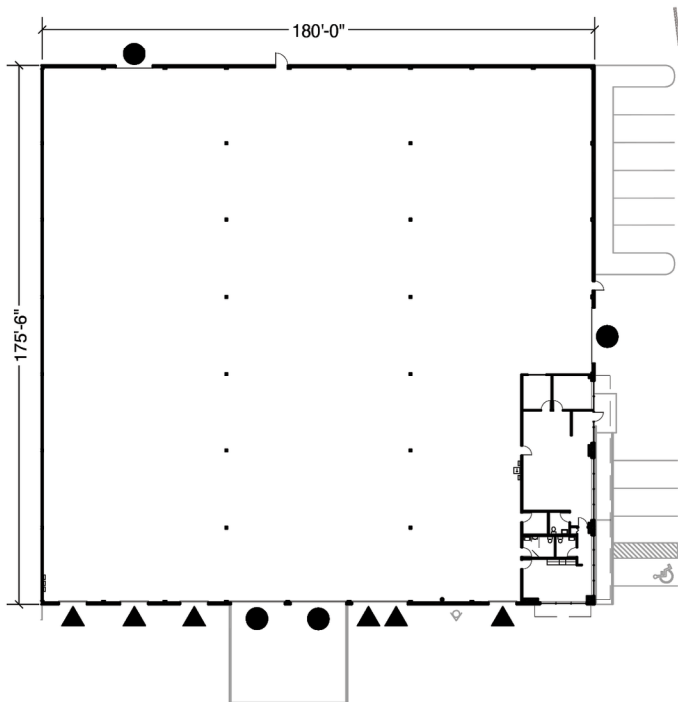
## 212TH BUSINESS PARK - BUILDING A #107

Shell SF	14,280
Office SF	1,506
Clear Height	20'
Dock-High Doors	2
Grade-Level Doors	1
Available	With 45 days' notice



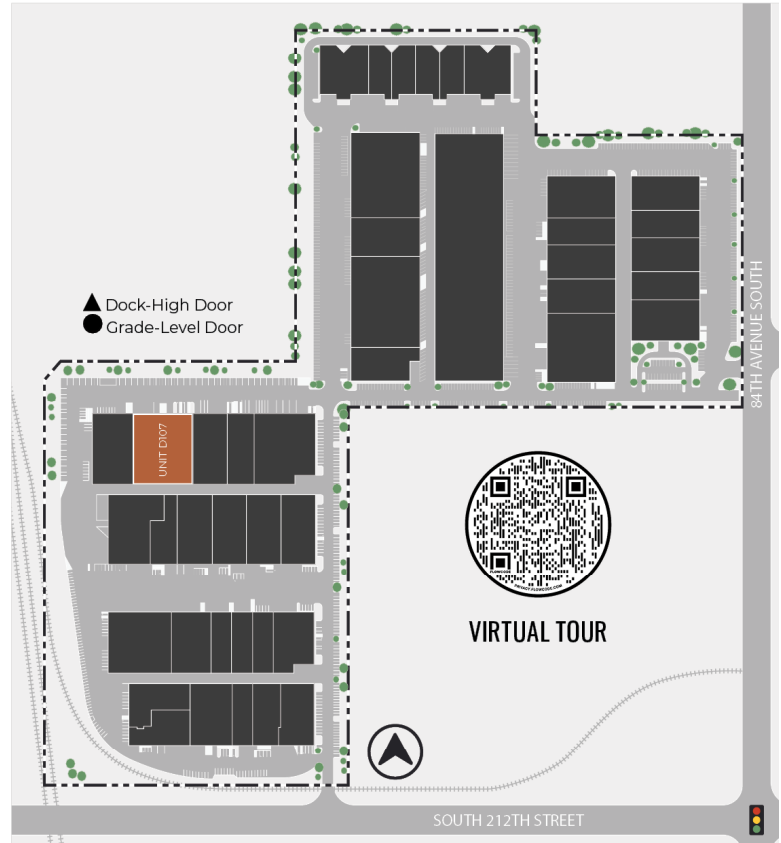
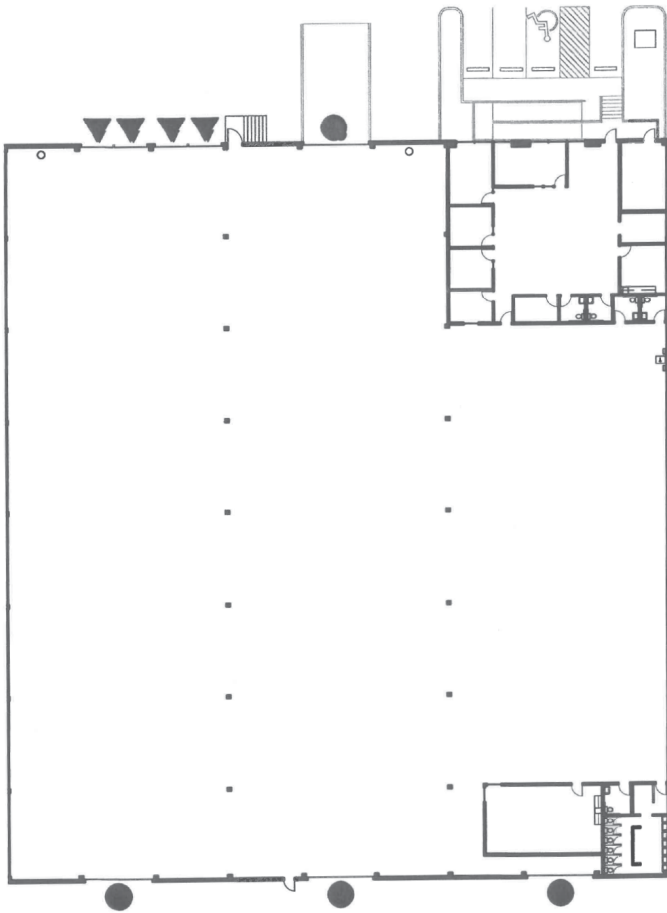
## 212TH BUSINESS PARK - BUILDING B #104

Shell SF	10,552
Office SF	1,052
Clear Height	20'
Dock-High Doors	2
Grade-Level Doors	1
Available	Now



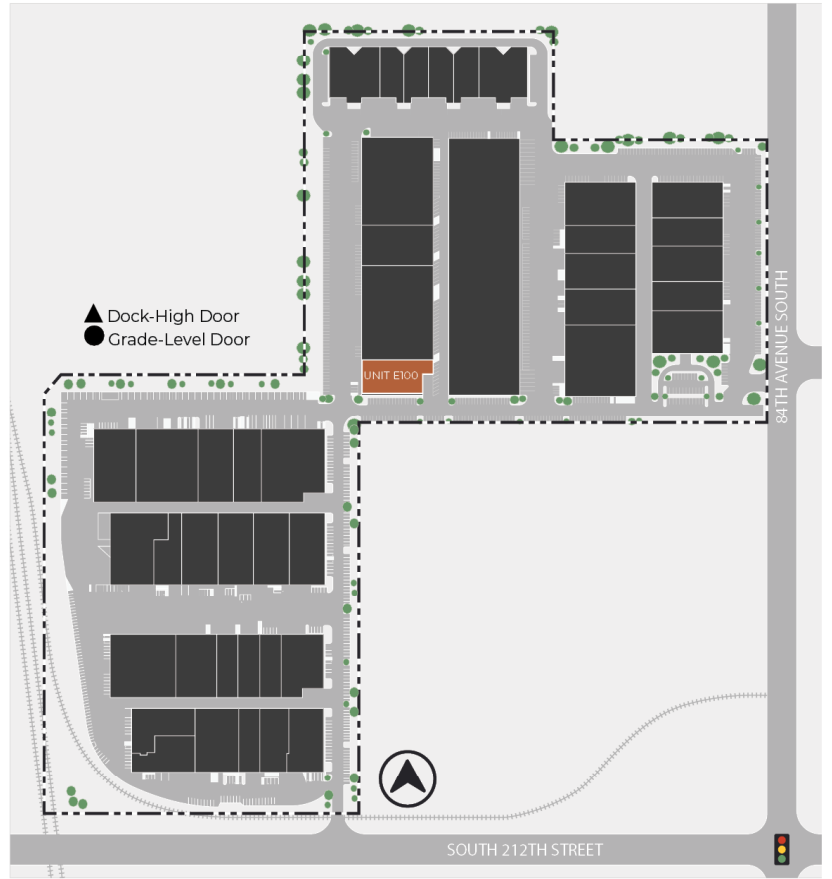
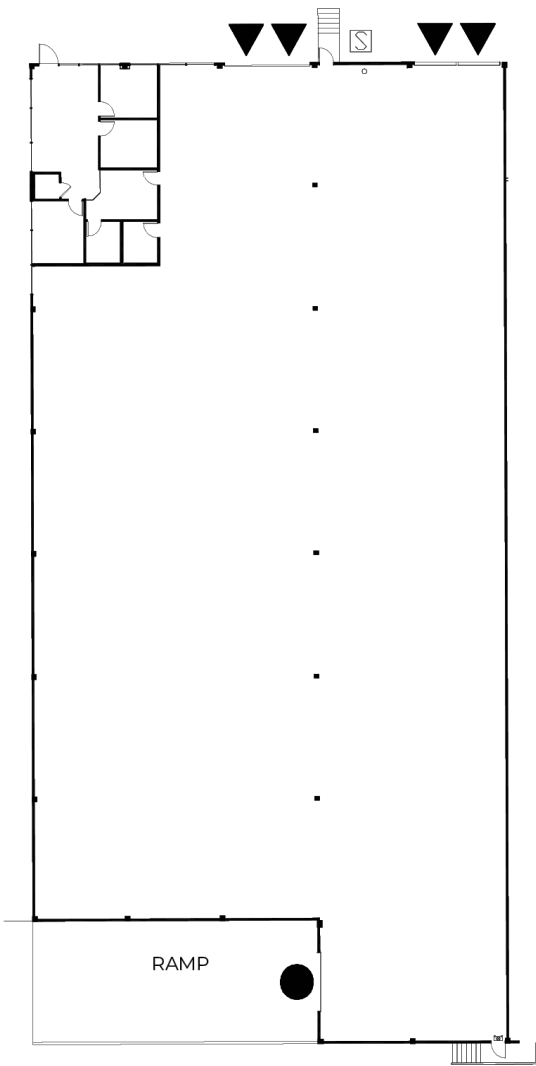
## 212TH BUSINESS PARK - BUILDING B #110

Shell SF	31,500
Office SF	1,805
Clear Height	20'
Dock-High Doors	6
Grade-Level Doors	4*
Available	Now
Notes	*3 Grade-level doors are oversized



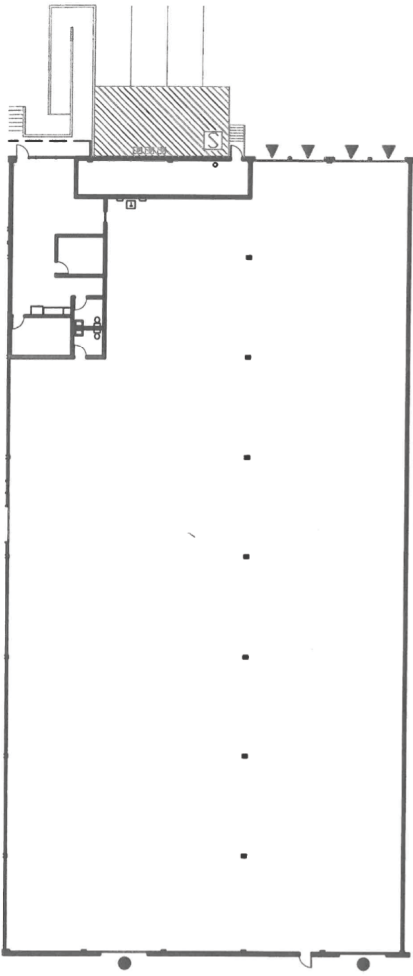
## 212TH BUSINESS PARK - BUILDING D #107

Shell SF	35,873
Office SF	2,973
Clear Height	20'
Dock-High Doors	4
Grade-Level Doors	4
Available	Now



## 212TH BUSINESS PARK - BUILDING E #100

Shell SF	18,507
Office SF	1,126
Clear Height	20'
Dock-High Doors	4
Grade-Level Doors	1
Available	Now
Notes	Short term deals only



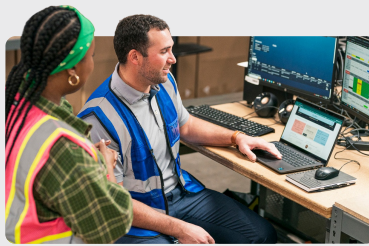
## 212TH BUSINESS PARK - BUILDING G #105

Shell SF	19,745
Office SF	1,135
Clear Height	20'
Dock-High Doors	4
Grade-Level Doors	2
Available	Now
Notes	Short term deals only

# Committed to Driving Value for Our Customers

## Properties with a Competitive Edge

Our scale, proprietary data and local relationships allow our 1,200+ skilled team members to help customers stay ahead of market trends.

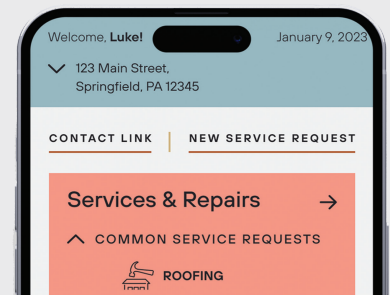


## Best-in-Class Customer Service

Our on-the-ground regional teams provide you with local expertise, leveraging data-driven insights to find the right solutions for your business.

## Link+

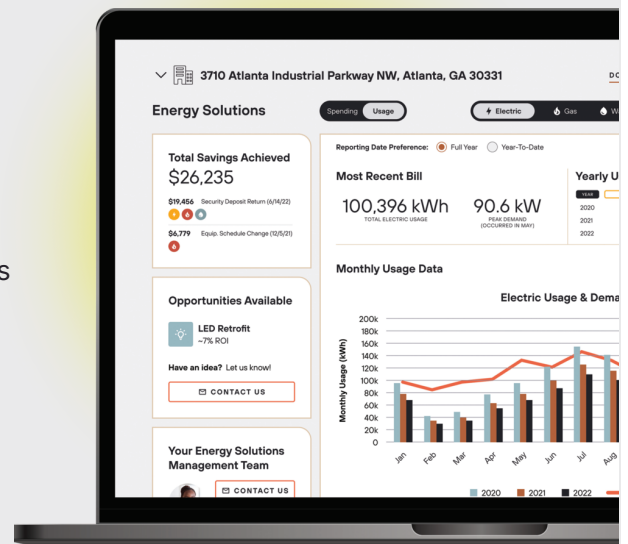
Our digital customer experience platform provides easy access to your property management teams, lease documents, billing and service requests. Sign up today!



500 Million Square Foot Portfolio

## Energy Solutions

Our comprehensive energy and utility management program enables customers to achieve savings and access our in-house sustainability experts. Enroll through Link+.



# CONTACT INFORMATION

S. 212th St & 84th Ave S  
Kent, WA 98032

**Matt Wood, SIOR**

Matt.Wood@kbcadvisors.com  
(206) 595-6814

**John Broom**

John.broom@kbcadvisors.com  
(206) 877-2750

This is not an offer or acceptance of an offer to lease space. A lease will only be offered or made in a written agreement signed by landlord. No representation or warranty of any kind is made by landlord unless set forth in a written definitive lease executed by the landlord.



LEASED BY

