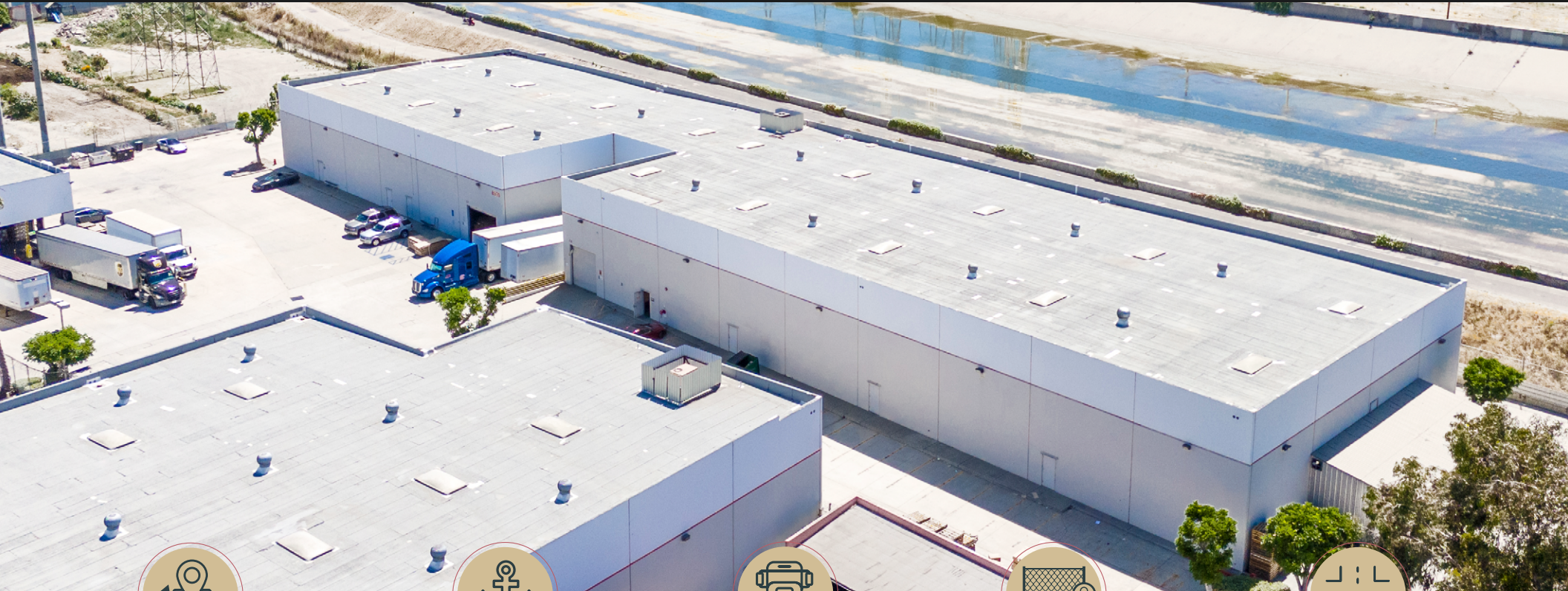


FOR LEASE

±36,834 SF Available

6935 Atlantic Avenue, Long Beach, CA



IMMEDIATE ACCESS
TO I-710 &
HIGHWAY 91



13 MILES TO
PORTS OF LA
& LONG BEACH



EXCELLENT
TRUCK TURNING
RADIUS



FENCED &
SECURED
CONCRETE YARD



EXCEPTIONAL
REGIONAL
CONNECTIVITY



ERIC DASCHBACH

+1 562 882 1273
eric.daschbach@kbcadvisors.com
Lic #01809542

RYAN BOS

+1 310 962 1123
ryan.bos@kbcadvisors.com
Lic #01842405

COLIN MACMILLAN

+1 626 825 8700
colin.macmillan@kbcadvisors.com
Lic #02163693

JILLIAN ESCOBAR

+1 424 241 8571
jillian.escobar@kbcadvisors.com
Lic #01931905

Property Specifications



±36,834 SF
Available for Lease

2,140 SF
Office Space

2
Dock High Positions

2
Ground Level Doors

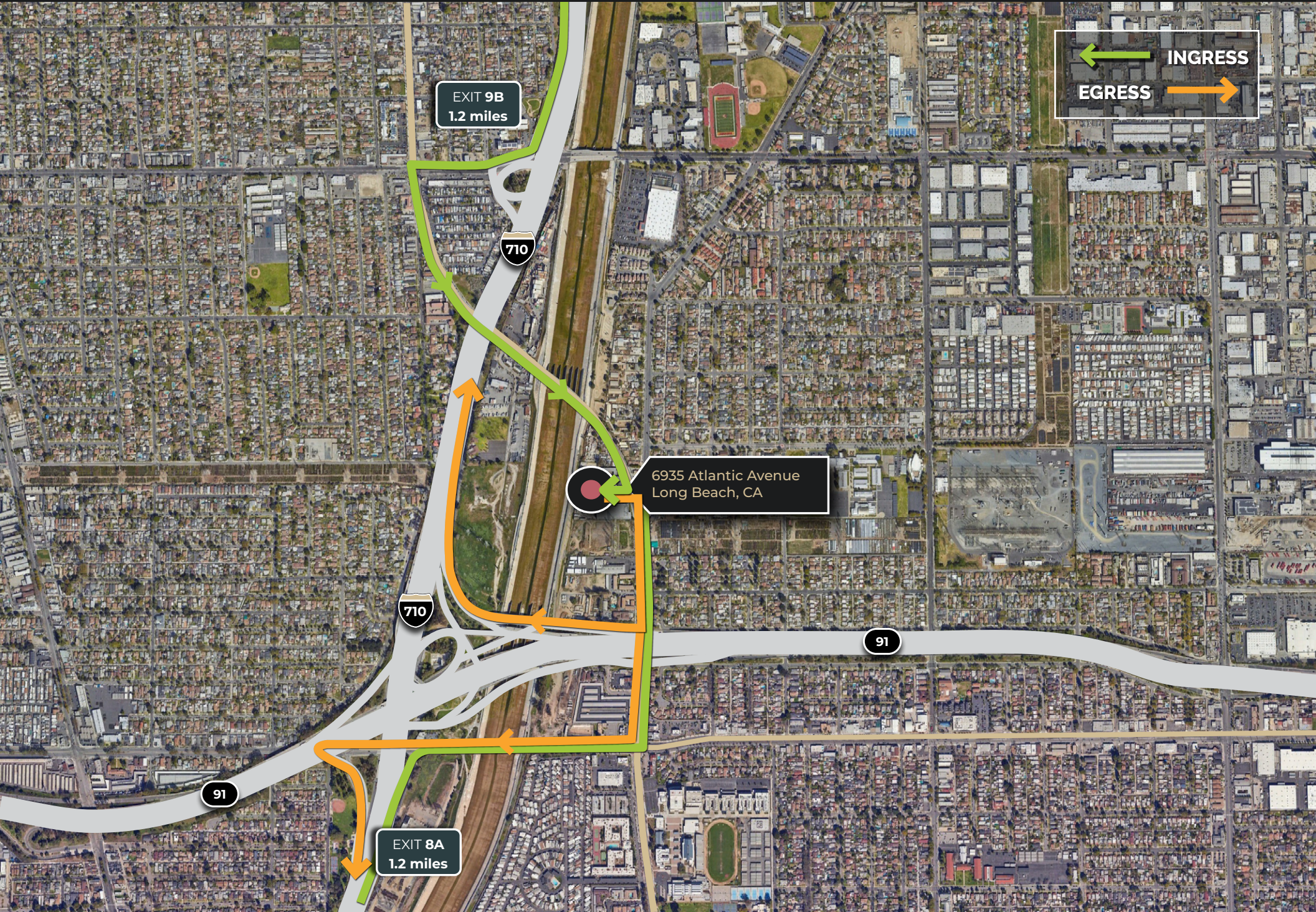
FENCED & SECURED
Concrete Yard with 150' Truck Radius

RACKING
Available

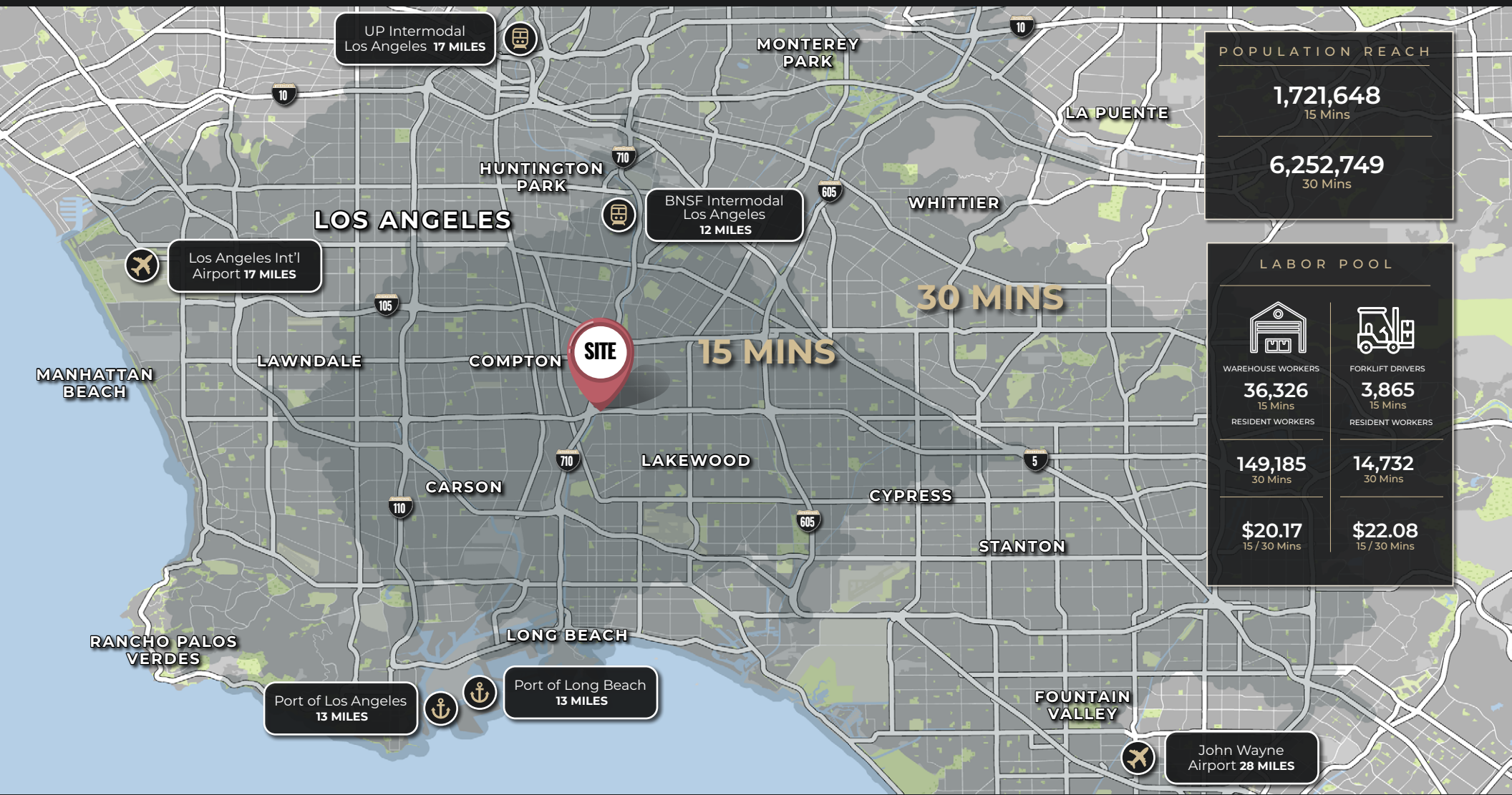
PRIME INFILL
Los Angeles Location

26'
Clear Height

Immediate Access to I-710 & Hwy 91



Regional Connectivity



POPULATION REACH

1,721,648
15 Mins

6,252,749
30 Mins

LABOR POOL

 WAREHOUSE WORKERS 36,326 15 Mins <small>RESIDENT WORKERS</small>	 FORKLIFT DRIVERS 3,865 15 Mins <small>RESIDENT WORKERS</small>
149,185 30 Mins	14,732 30 Mins
\$20.17 15 / 30 Mins	\$22.08 15 / 30 Mins



ERIC DASCHBACH
 +1 562 882 1273
 eric.daschbach@kbcadvisors.com
 Lic #01809542

RYAN BOS
 +1 310 962 1123
 ryan.bos@kbcadvisors.com
 Lic #01842405

COLIN MACMILLAN
 +1 626 825 8700
 colin.macmillian@kbcadvisors.com
 Lic #02163693

JILLIAN ESCOBAR
 +1 424 241 8571
 jillian.escobar@kbcadvisors.com
 Lic #01931905

© 2024 KBC ADVISORS This information has been obtained from sources believed to be reliable but has not been verified for accuracy or completeness, and KBC Advisors disclaims any guarantees, warranties or representations, express or implied, as to the completeness or accuracy as to the information contained herein. You should conduct a careful, independent investigation of the property and verify all information. Any reliance on this information is solely at your own risk. The KBC ADVISORS logo is a service mark of KBC ADVISORS. All other marks displayed on this document are the property of their respective owners. Photos herein are the property of their respective owners. Use of these images without the express written consent of the owners is prohibited.

