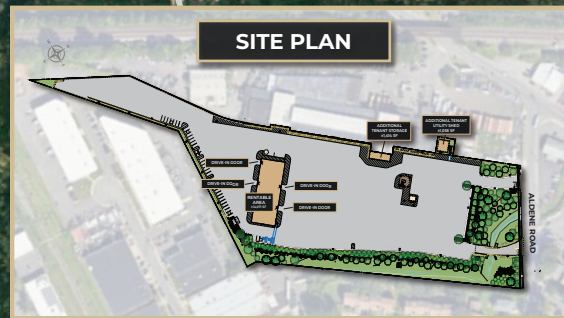


FOR LEASE - IMMEDIATE OCCUPANCY

Institutional Quality Fleet Parking / Outside Storage Site Near the Port

120 Aldene Road, Roselle, NJ 07203



14,071 SF REPAIR
FACILITY
ON 8.7 ACRES



1.8 MILES FROM
GARDEN STATE
PARKWAY AT EXIT 137



5 MILES FROM
NEW JERSEY
TURNPIKE



PAVED, FENCED,
AND LIT SITE



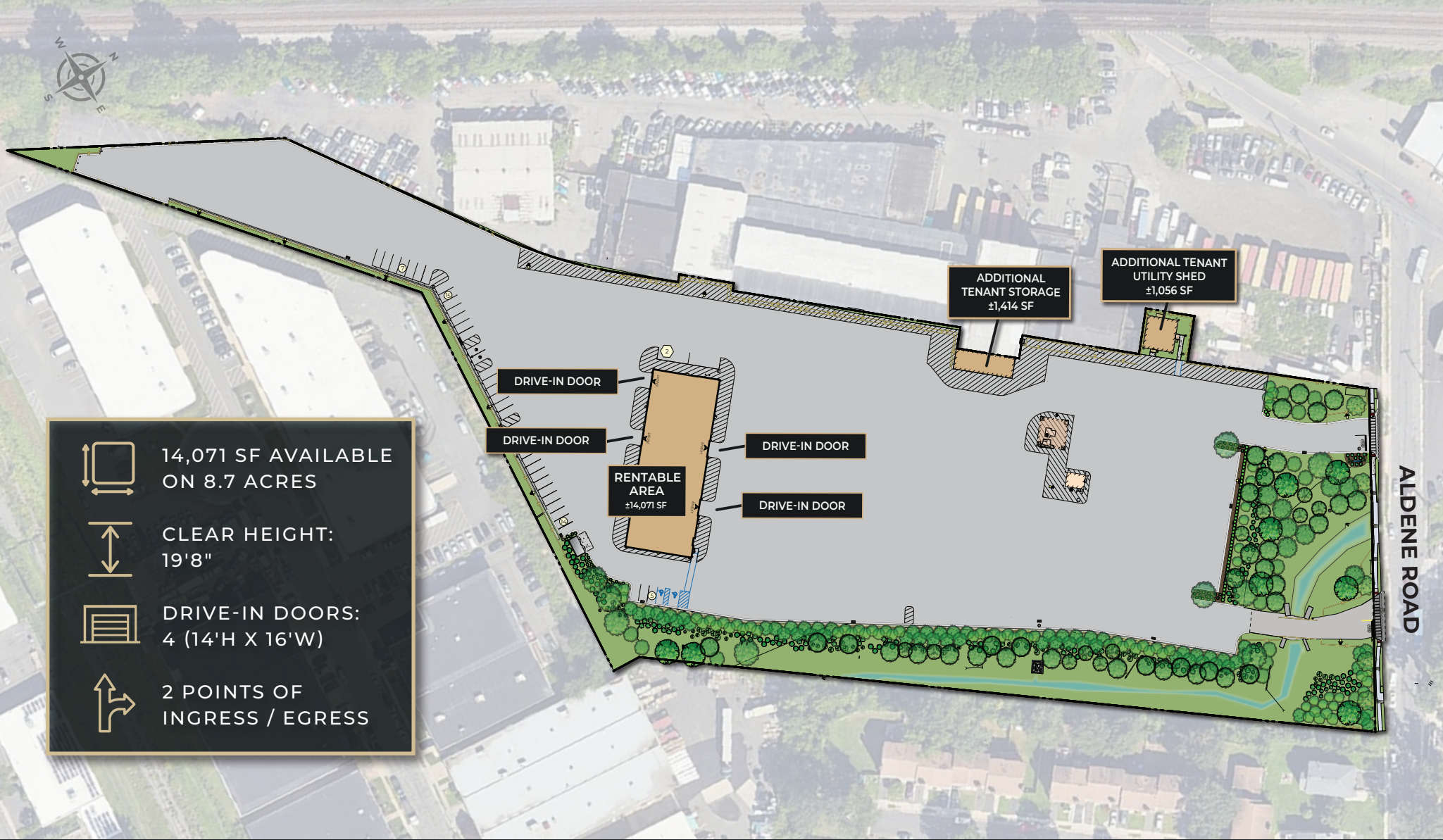
JASON GOLDMAN
+1 201 280 5360
jason.goldman@kbcadvisors.com

JOE VACCA
+1 804 475 6427
joe.vacca@kbcadvisors.com

MICHAEL KIMMEL
+1 410 241 1815
michael.kimmel@kbcadvisors.com

ANDREW SIEMSEN
+1 201 306 5019
andrew.siemsen@kbcadvisors.com

Site Plan



-  14,071 SF AVAILABLE ON 8.7 ACRES
-  CLEAR HEIGHT: 19'8"
-  DRIVE-IN DOORS: 4 (14'H X 16'W)
-  2 POINTS OF INGRESS / EGRESS



JASON GOLDMAN
+1 201 280 5360
jason.goldman@kbcadvisors.com

JOE VACCA
+1 804 475 6427
joe.vacca@kbcadvisors.com

MICHAEL KIMMEL
+1 410 241 1815
michael.kimmel@kbcadvisors.com

ANDREW SIEMSEN
+1 201 306 5019
andrew.siemsen@kbcadvisors.com

120 ALDENE ROAD, ROSELLE, NJ 07203

Renovation Progress Photos



JASON GOLDMAN

+1 201 280 5360

jason.goldman@kbcadvisors.com

JOE VACCA

+1 804 475 6427

joe.vacca@kbcadvisors.com

MICHAEL KIMMEL

+1 410 241 1815

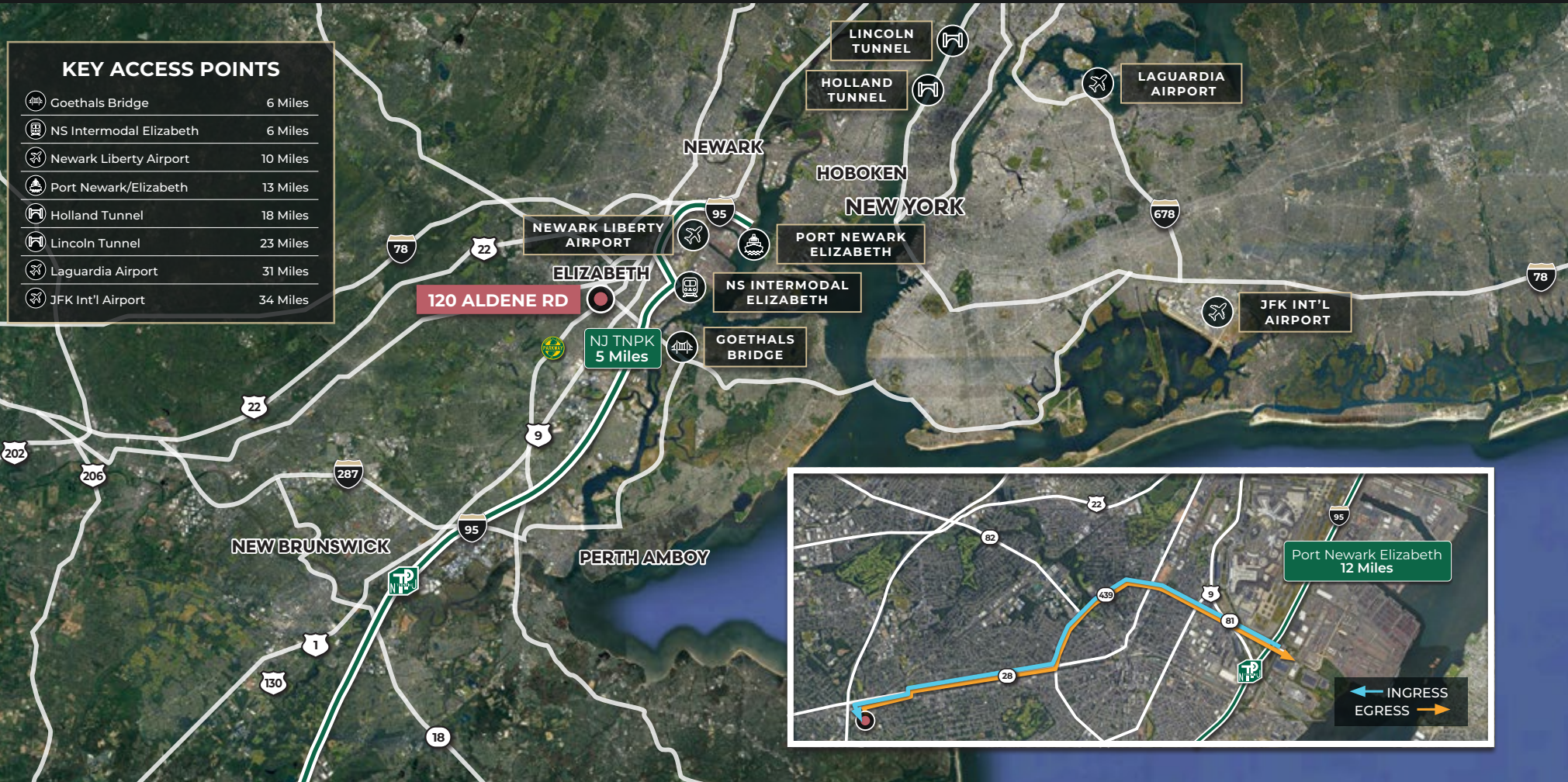
michael.kimmel@kbcadvisors.com

ANDREW SIEMSEN

+1 201 306 5019

andrew.siemsen@kbcadvisors.com

Premier Regional Location Access



JASON GOLDMAN
+1 201 280 5360
jason.goldman@kbcadvisors.com

JOE VACCA
+1 804 475 6427
joe.vacca@kbcadvisors.com

MICHAEL KIMMEL
+1 410 241 1815
michael.kimmel@kbcadvisors.com

ANDREW SIEMSEN
+1 201 306 5019
andrew.siemsen@kbcadvisors.com

KBC ADVISORS | NEW JERSEY
90 Woodbridge Center Drive, Suite 110
Woodbridge, NJ 07095

©2025 KBC ADVISORS This information has been obtained from sources believed to be reliable but has not been verified for accuracy or completeness. You should conduct a careful, independent investigation of the property and verify all information. Any reliance on this information is solely at your own risk. The KBC ADVISORS logo is a service mark of KBC ADVISORS. All other marks displayed on this document are the property of their respective owners. Photos herein are the property of their respective owners. Use of these images without the express written consent of the owners is prohibited.

