

FOR LEASE

195,382 SF | Available August 1, 2026

24 Engelhard Drive Monroe Township, NJ



26 DOCK DOORS &
40 TRAILER SPACES



32' CLEAR
HEIGHT



2.5 MILES FROM
I-95 EXIT 8A



SECURED
YARD

Jason Goldman
+1 201 280 5360
jason.goldman@kbcadvisors.com

Michael Kimmel
+1 410 241 1815
michael.kimmel@kbcadvisors.com



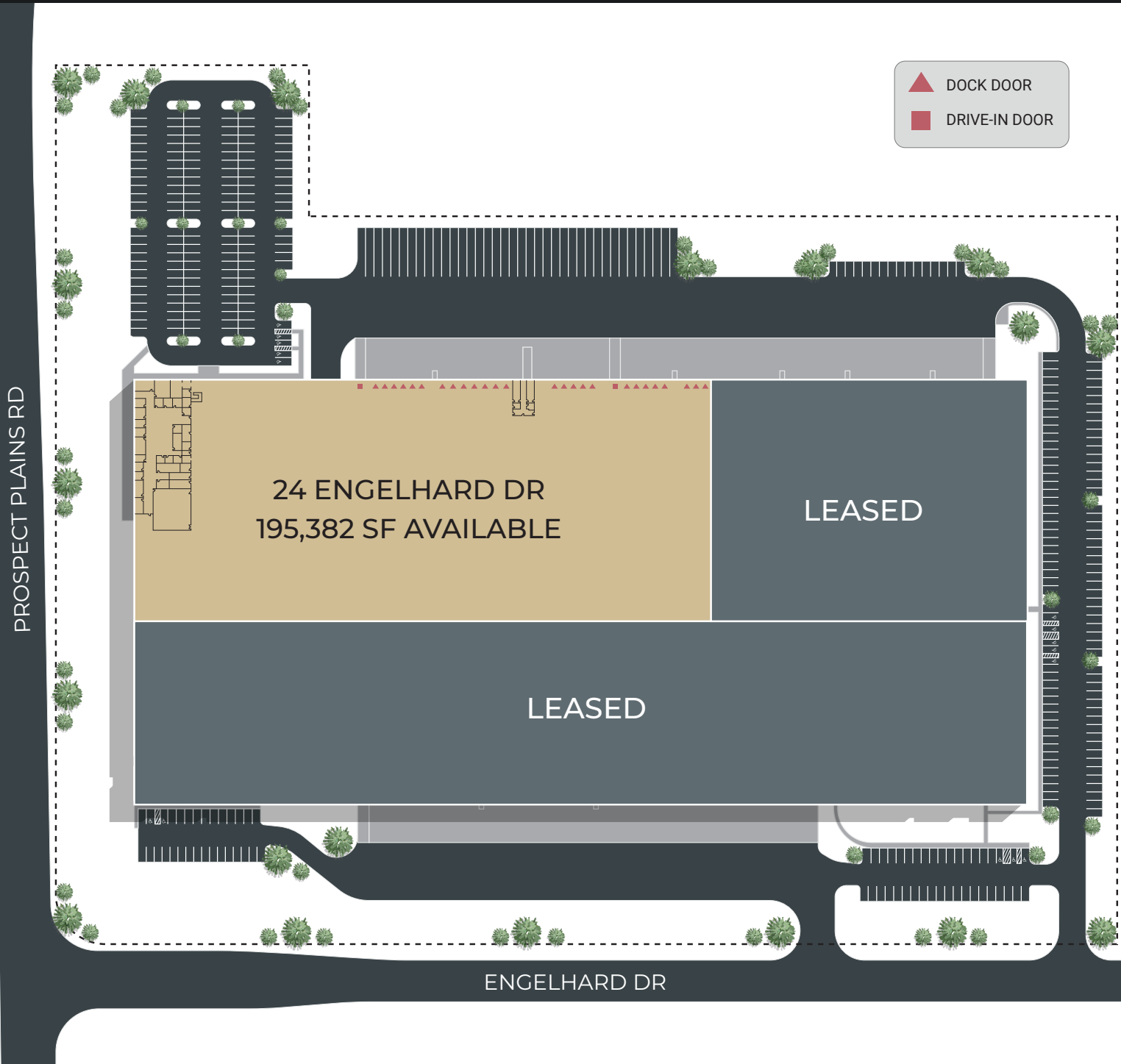
JAMES CAMPBELL
COMPANY

Andrew Siemsen
+1 201 306 5019
andrew.siemsen@kbcadvisors.com

KBC Advisors | New Jersey
90 Woodbridge Center Drive, Suite 110
Woodbridge, NJ 07095

KBCADVISORS

Property Advantages



▲ DOCK DOOR
■ DRIVE-IN DOOR



24 ENGELHARD DR
195,382 SF AVAILABLE

LEASED

LEASED

195,382 SF
Total SF

32'
Clear Height

26 – 9' X 10'
Dock Doors

2 – 12' X 14'
Drive-In Doors

40
Trailer Parking

140
Auto Parking

±10,384 SF
Main Office

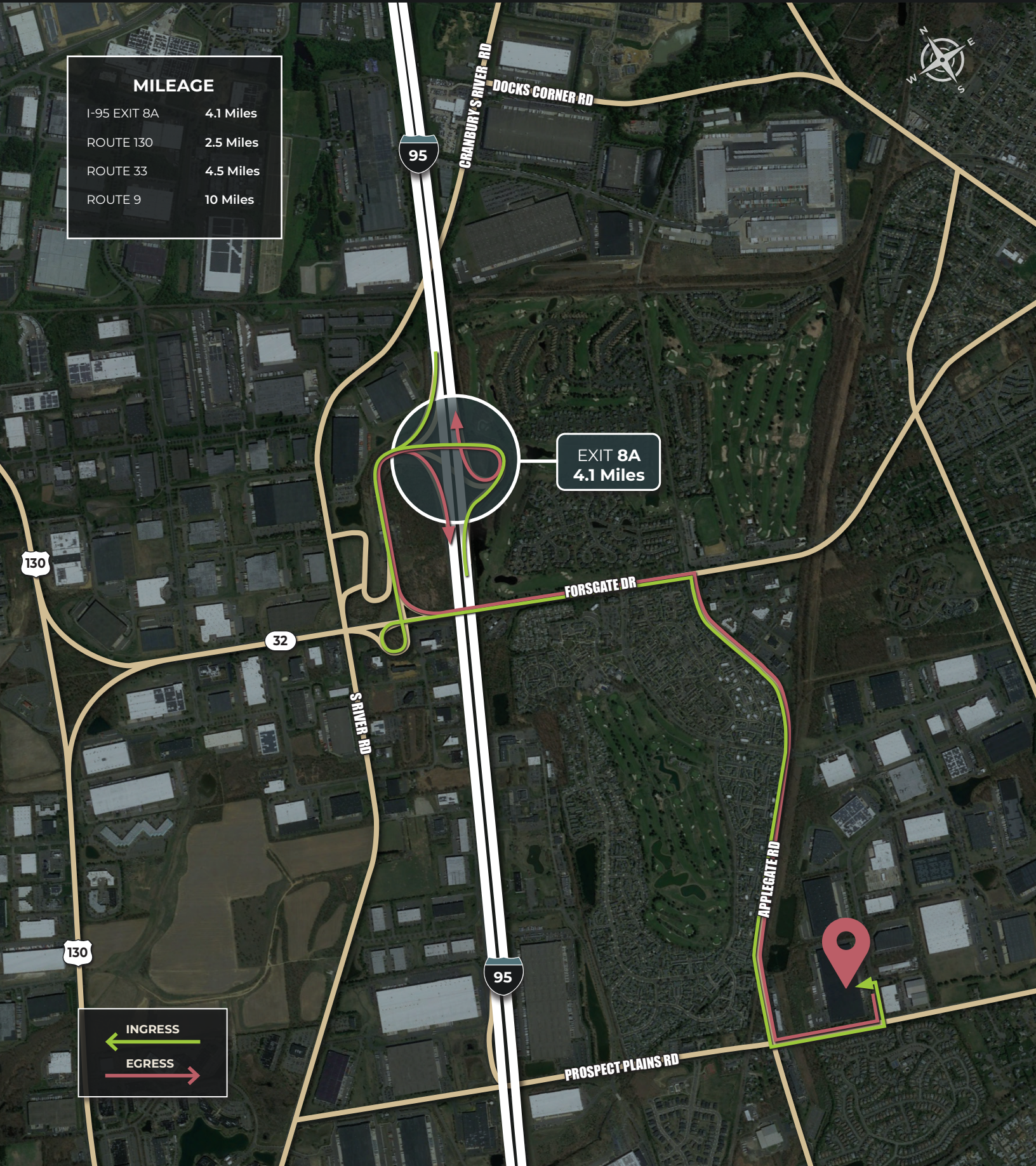
±1,500 SF
Shipping Office

\$1.54 SF
Taxes

\$.97 SF
CAM & Insurance

Location Overview

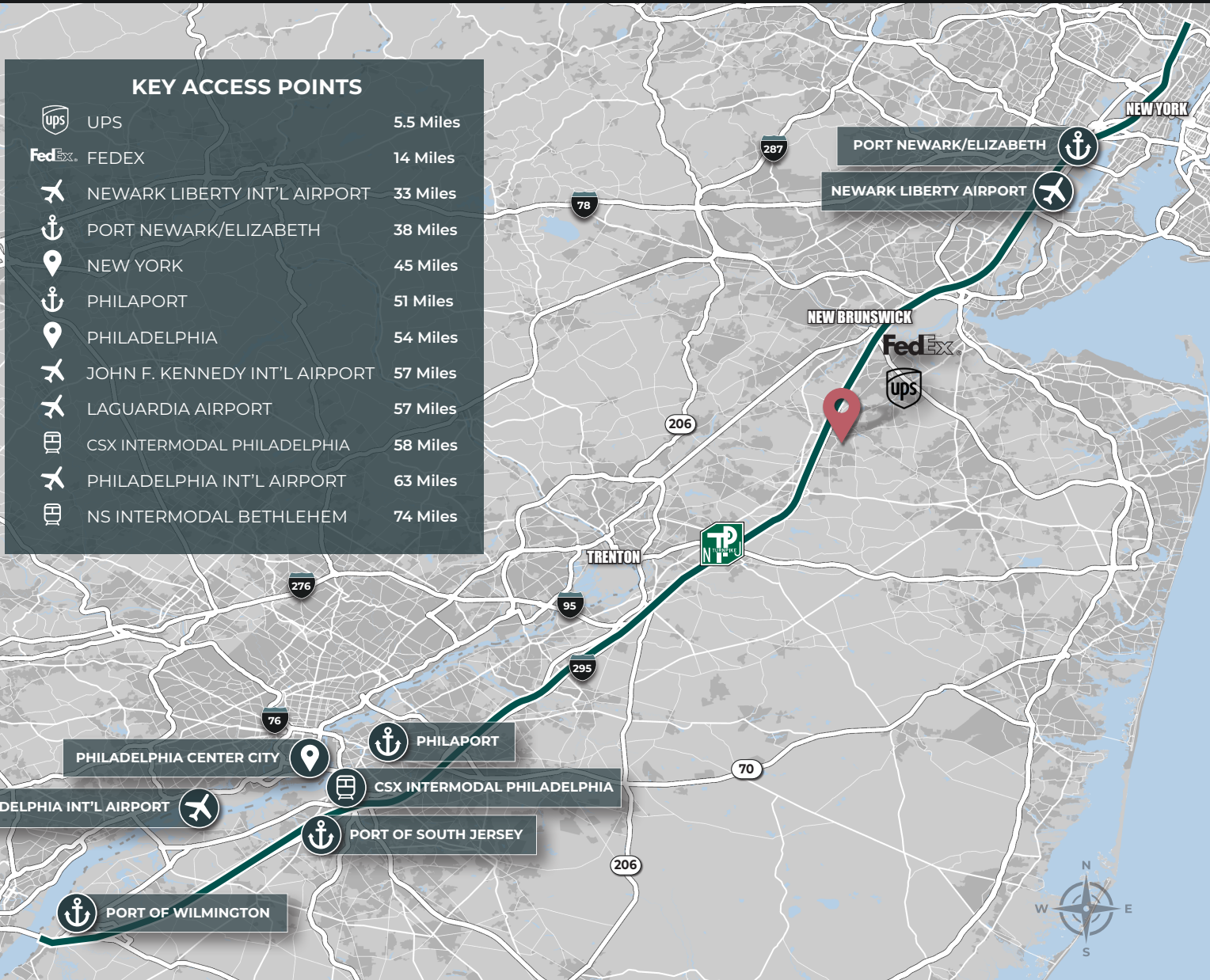
MILEAGE	
I-95 EXIT 8A	4.1 Miles
ROUTE 130	2.5 Miles
ROUTE 33	4.5 Miles
ROUTE 9	10 Miles



EXIT 8A
4.1 Miles

INGRESS
EGRESS

Location Overview



Jason Goldman
 +1 201 280 5360
 jason.goldman@kbcadvisors.com

Michael Kimmel
 +1 410 241 1815
 michael.kimmel@kbcadvisors.com

Andrew Siemsen
 +1 201 306 5019
 andrew.siemsen@kbcadvisors.com

KBC Advisors | New Jersey
 90 Woodbridge Center Drive, Suite 110
 Woodbridge, NJ 07095



© 2026 KBC ADVISORS This information has been obtained from sources believed to be reliable but has not been verified for accuracy or completeness, and KBC Advisors disclaims any guarantees, warranties or representations, express or implied, as to the completeness or accuracy as to the information contained herein. You should conduct a careful, independent investigation of the property and verify all information. Any reliance on this information is solely at your own risk. The KBC ADVISORS logo is a service mark of KBC ADVISORS. All other marks displayed on this document are the property of their respective owners. Photos herein are the property of their respective owners. Use of these images without the express written consent of the owners is prohibited.

