

# Quick Start Guide

Welcome to GuideNOW URCaps! This quick start guide will help you get up and running with the product in no time.

[Revision history](#)

[Install GuideNOW hardware](#)

[Connect GuideNOW PC to network](#)

[Install the GuideNOW URCaps](#)

[Configure GuideNOW URCaps](#)

[Tracking Demo](#)

## Revision history

Aa Revision	☰ Description	📅 Date	📎 Export
<u>001</u>	Initial revision	@15/02/2023	<a href="#">Quick_start_guide.pdf</a>

### ▼ Install GuideNOW hardware

To get started make sure you have :



### Included in the box

- 1x GuideNOW PC with its power supply.
- 3x mounts compatible with UR3, UR5 and UR10-16.
- 1x Camera with 2 m3 screws to fix it to the mount.
- 1x USB cable to connect the camera to the GuideNOW PC.
- 1x USB key with the URCaps, example program, and documentation.

### Not included in the box

- 1x ethernet cable
- 1x keyboard
- 1x mouse

1. Screw the camera on the mount corresponding to your UR, and fix it to the flange on your robot.



2. Plug the GuideNOW PC into the power outlet and connect it to the same network as the UR via Ethernet. **Do not turn it on.**



3. Connect the camera to the port of the GuideNOW PC highlighted in red on the picture below.



4. You can now turn on the GuideNOW PC by pressing the front button.



It should appear as GuideNOW-[serial number] on your local network.



**Warning :** be sure to plug the camera to the GuideNOW PC **before** turning it on, and never unplug it while the PC is turned on.

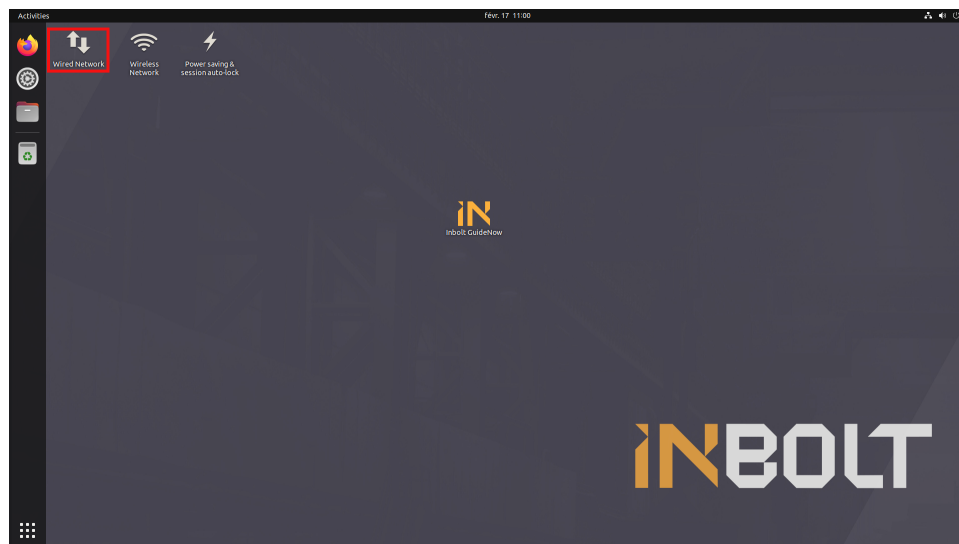
## ▼ Connect GuideNOW PC to network

To connect the robot to the GuideNOW PC, you must determine its local IP address.

1. Start by connect a monitor(via HDMI), a keyboard and a mouse (via USB) to the GuideNOW PC.

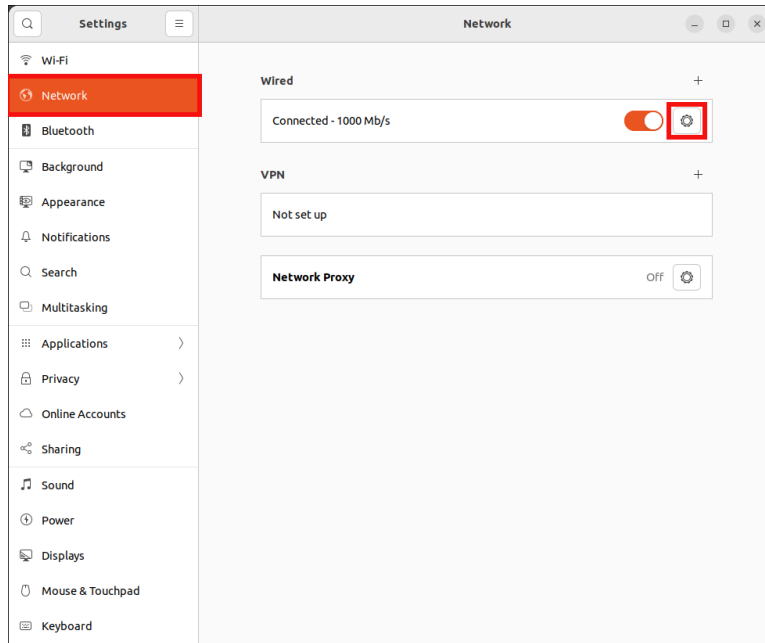


2. Log into the session ( password : GuideNOW )
3. Select **Wired Network** on the desktop

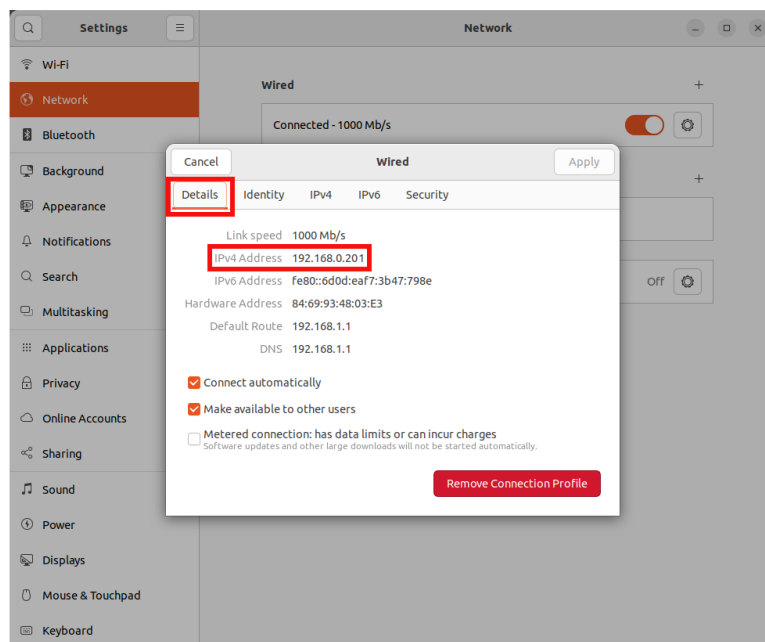


4. Select the bolt icon





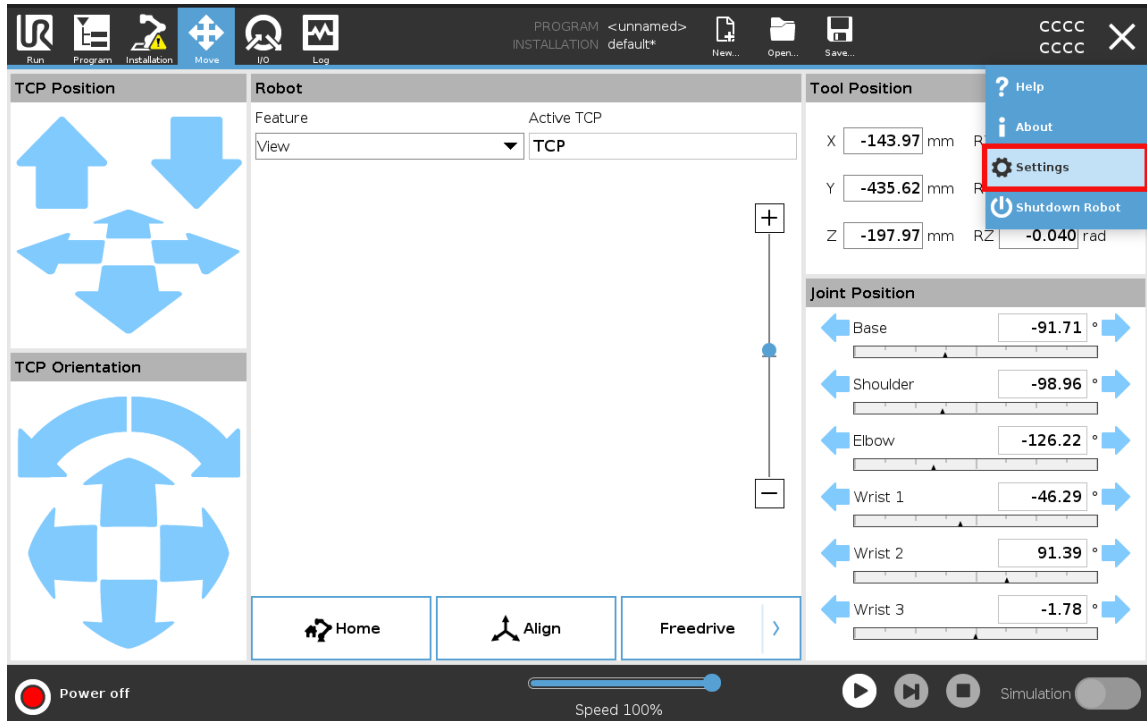
5. The IP is the one in the red box



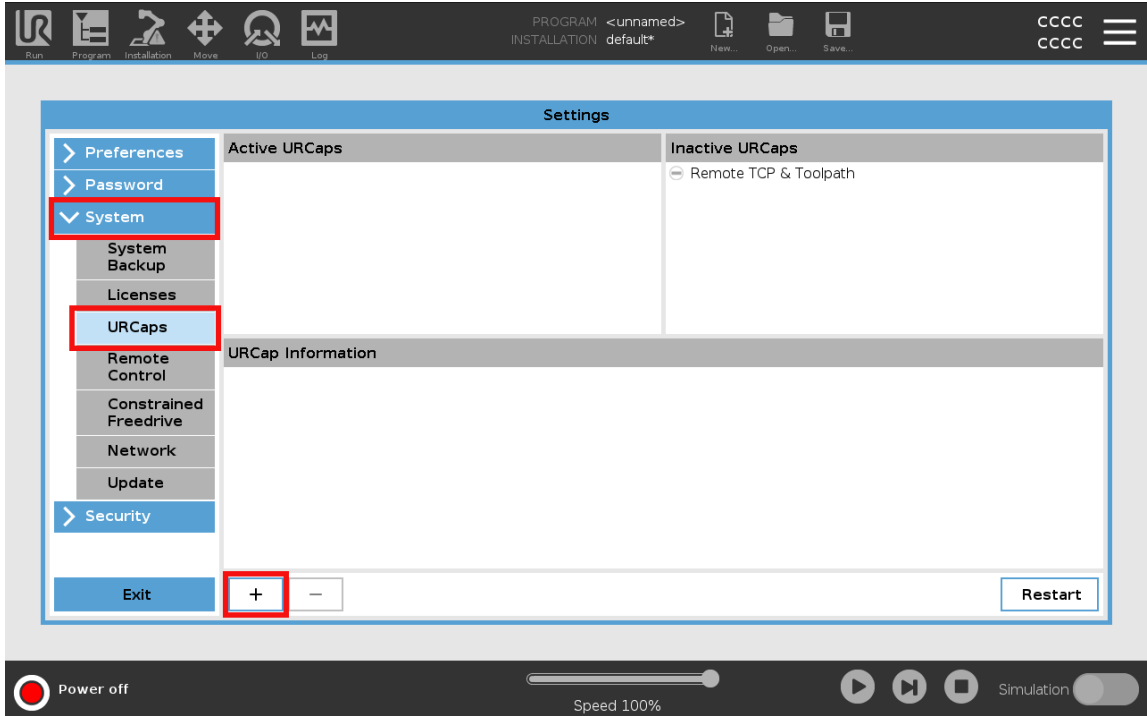
If your PC is connected to the Ethernet via DHCP, it should automatically obtain an IP address. We suggest that you assign a static IP address to the PC to prevent the need for modification in the robot.

## ▼ Install the GuideNOW URCaps

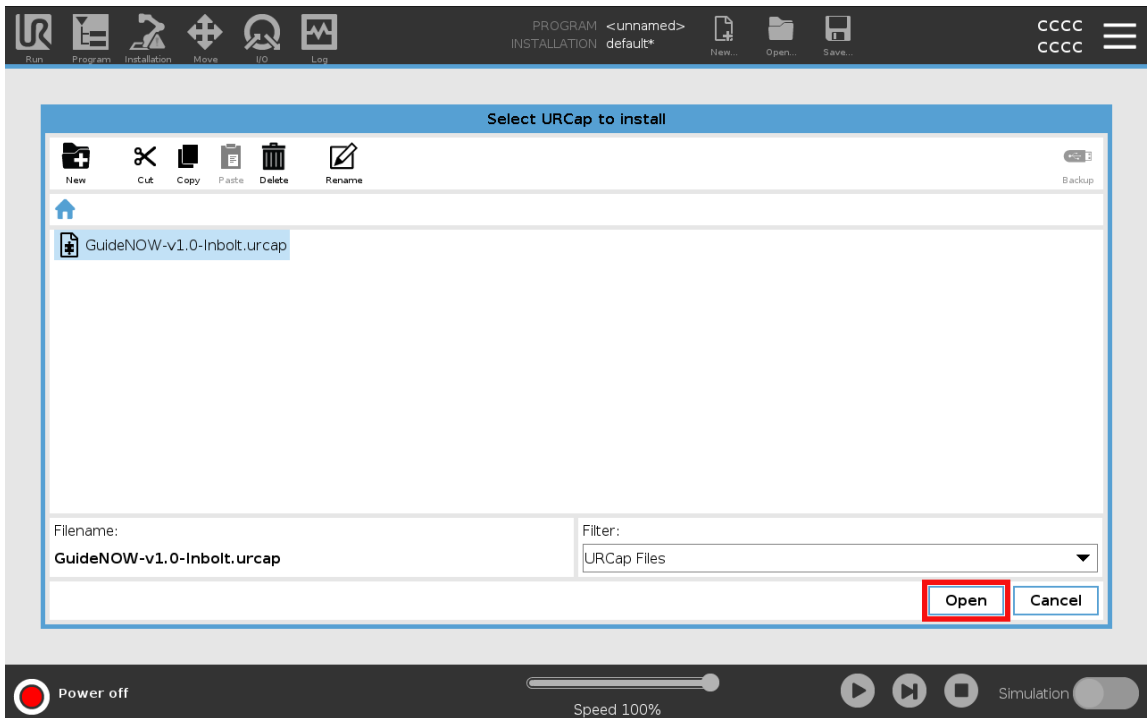
1. Plug the Inbolt USB key in the teach pendant.
2. Go to the “Settings” of your UR.



3. Select “System”, “URCaps”, and the “+” button.



4. Select the USB key and then GuideNOW-vX.X-Inbolt.urcap and click “Open”.

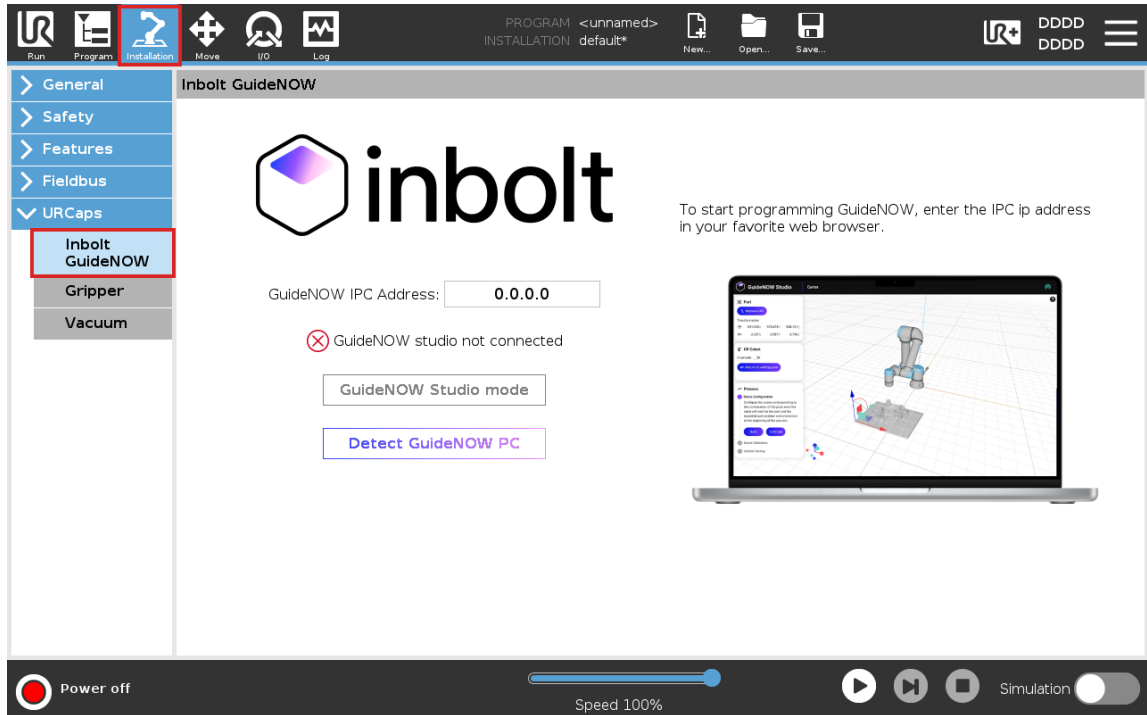


5. The robot will restart, if it is stuck on the loading screen, please force restart the robot by pushing the power on button of the teach pendant for 5 seconds.

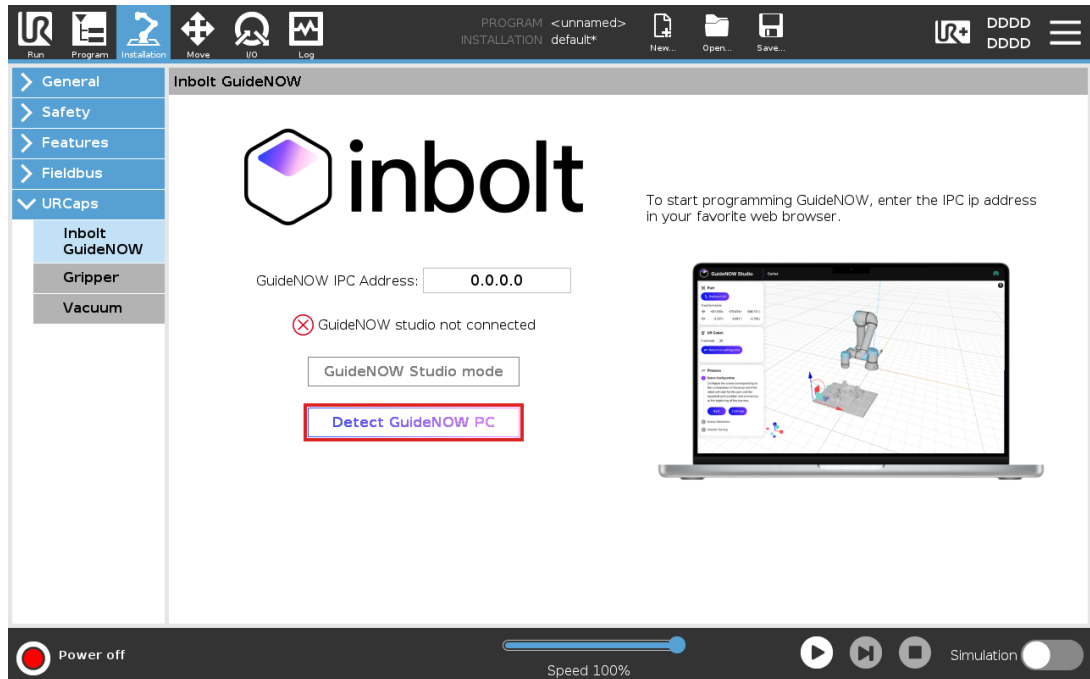
The robot should reboot with the GuideNOW URCaps installed.

## ▼ Configure GuideNOW URCaps

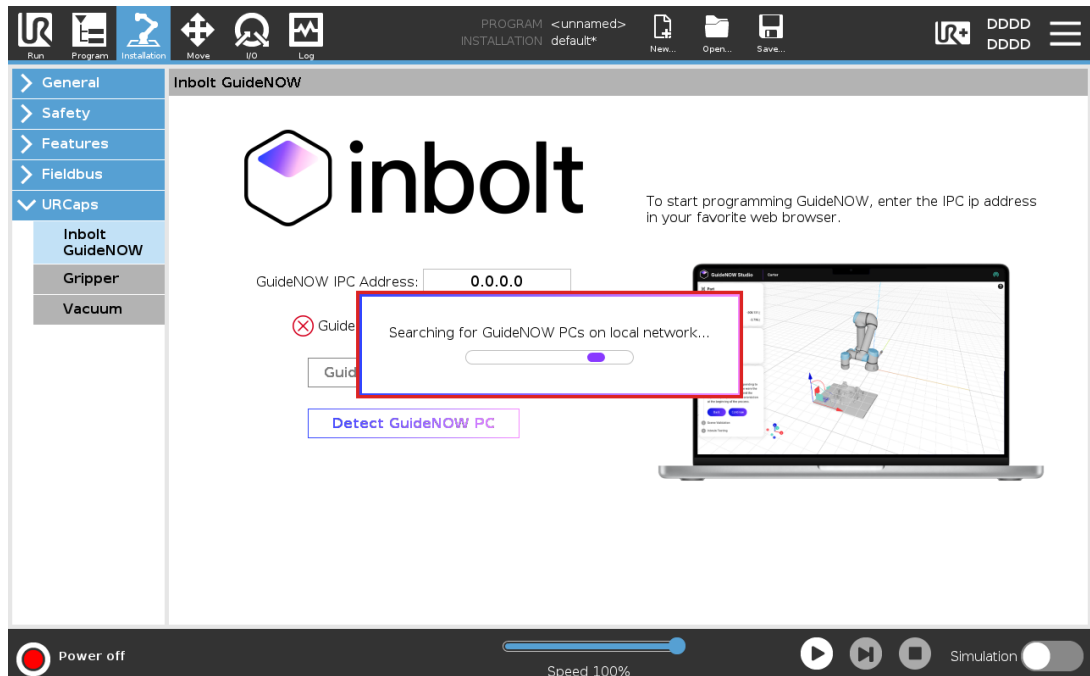
- Go to the “Installation” Tab and select “URCaps”, then select “Inbolt GuideNOW”.



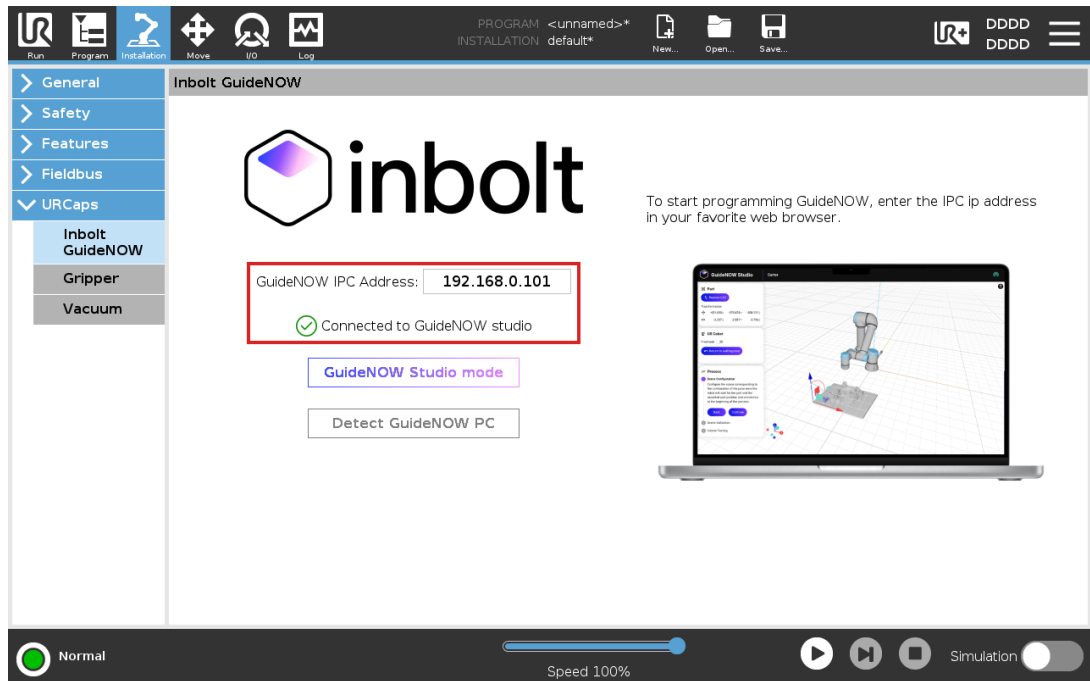
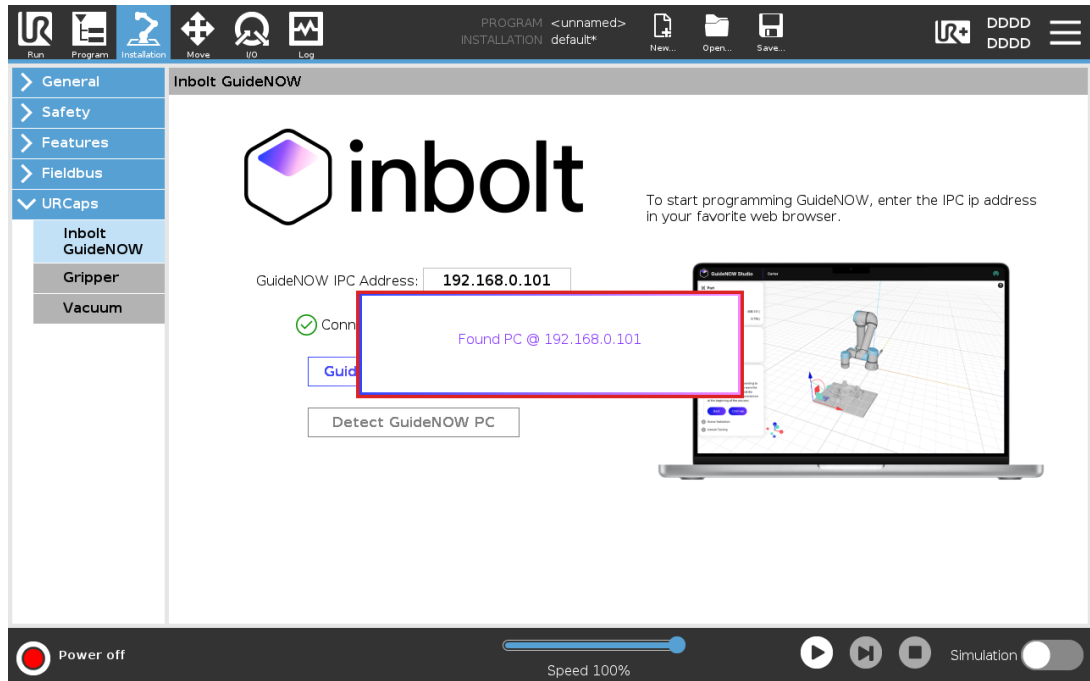
- a. You can try to detect the GuideNOW PC automatically. For that, click on the “Detect GuideNOW PC button”.



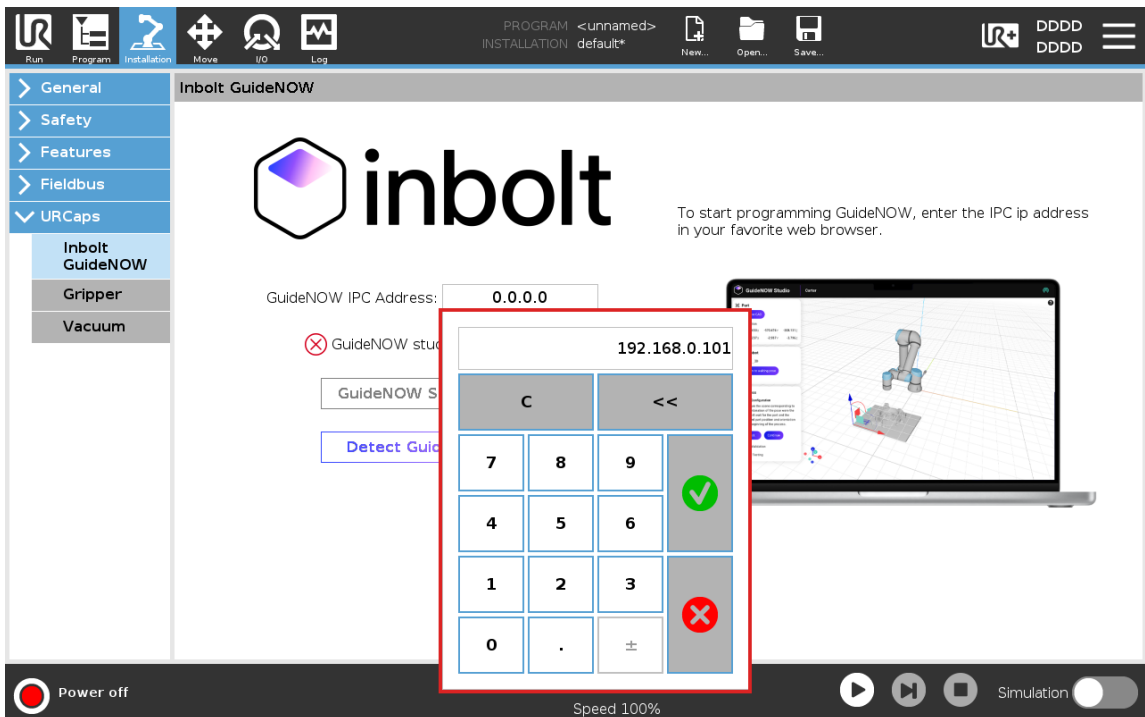
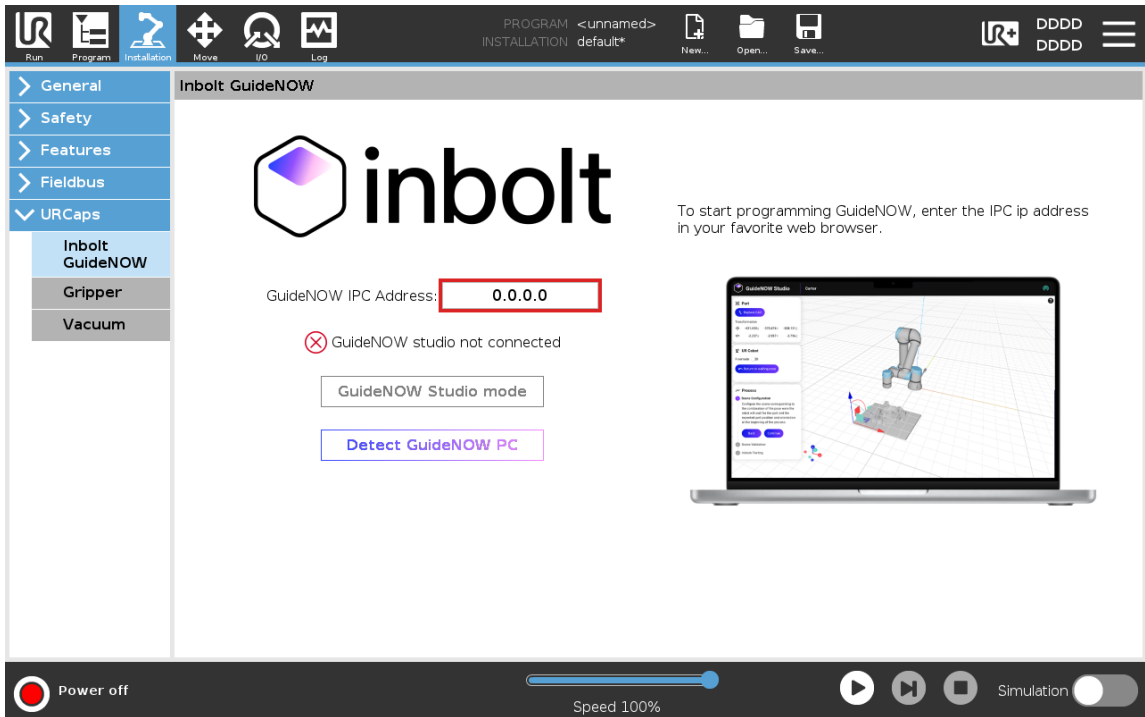
- b. Once you clicked, a popup will appear and the robot will start searching on your local network.



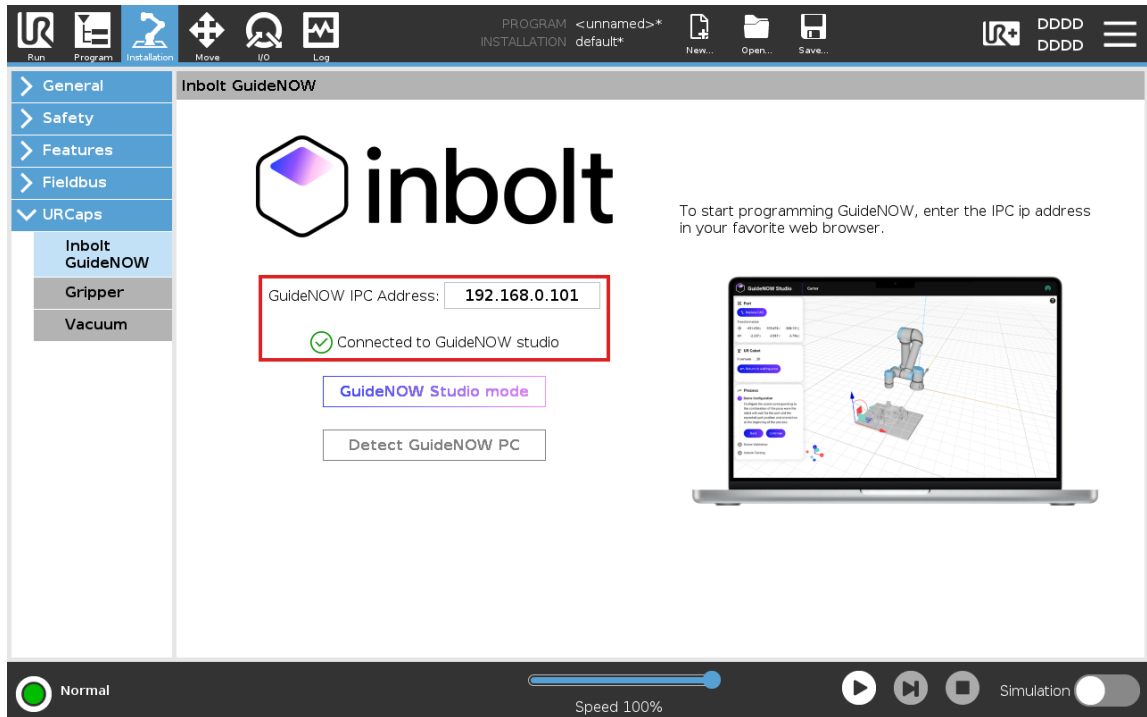
- c. If it finds the GuideNOW PC, it will automatically fill up the IP.



- If it can't find it automatically, please follow the **connect GuideNOW PC to network** of the **Going Further**, and enter the IP of the GuideNOW PC.



Wait until it is connected. The red cross should become a green checkmark.



You are now ready to use GuideNow.



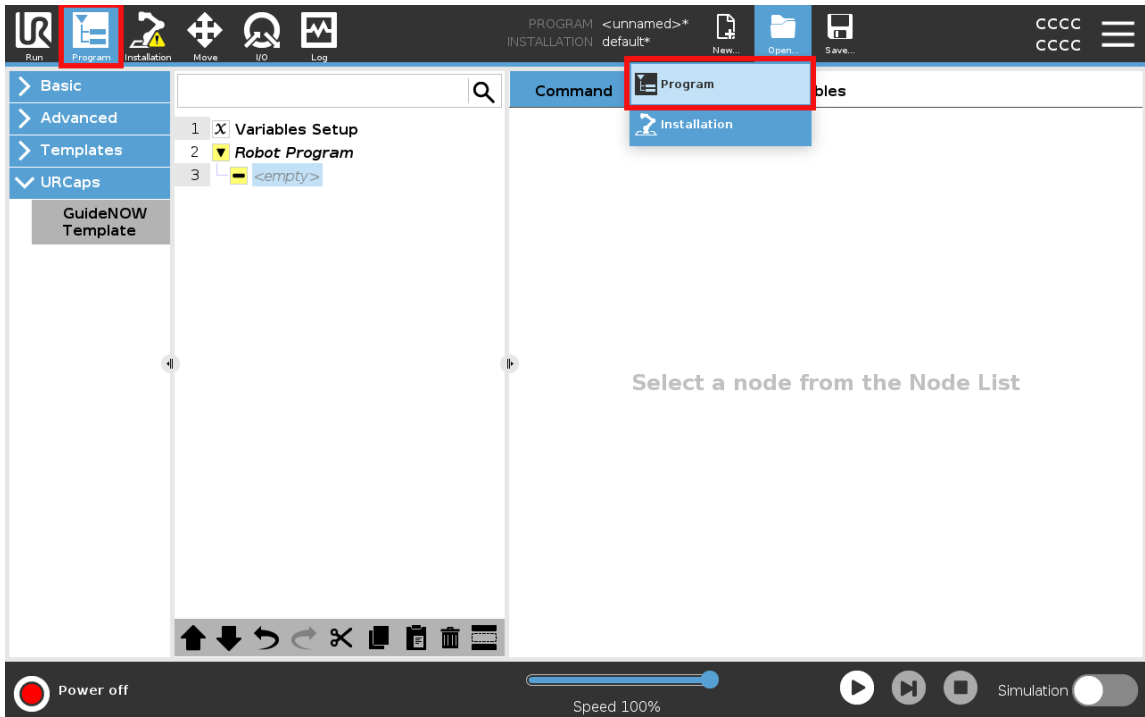
**Warning :** Be sure to **save the Installation** after the Robot is connected to GuideNOW Studio.

## ▼ Tracking Demo

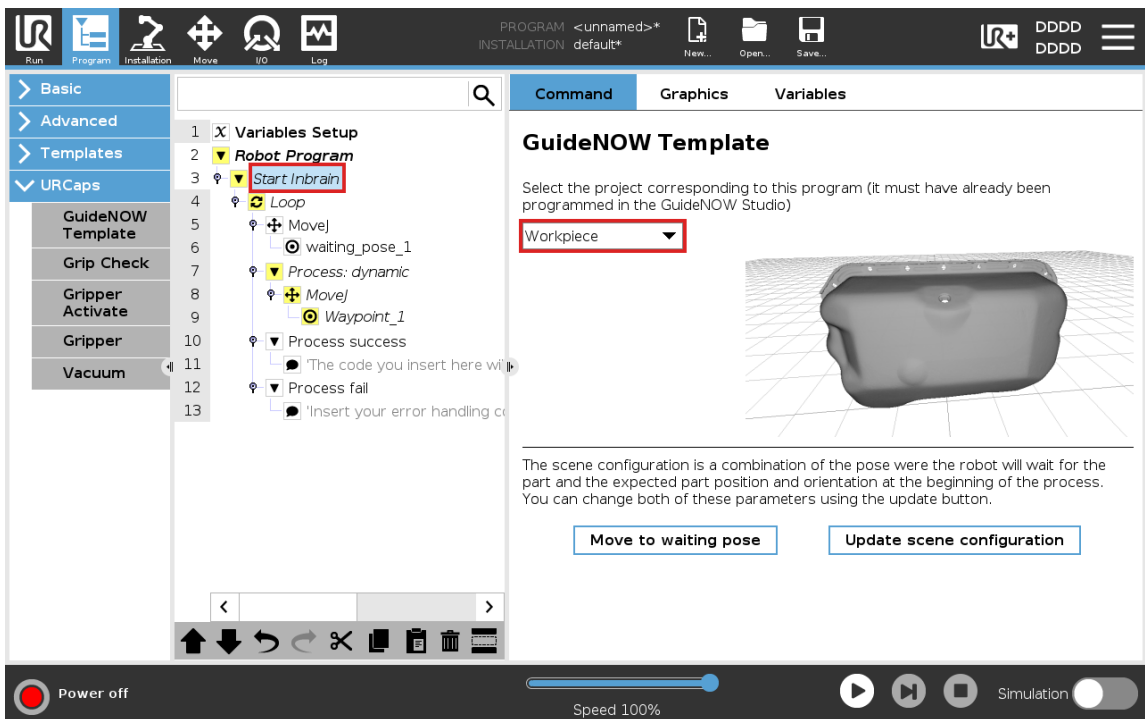
GuideNOW can be used to track your part while doing a process with the robot. To do this, simply select the “Program” tab and add a “Start Inbrain node” in the URCaps drop-down menu.

1. Put the workpiece in front of the robot, under the camera.
2. Open the program GuideNOW\_tracking\_demo.urp from the USB key.

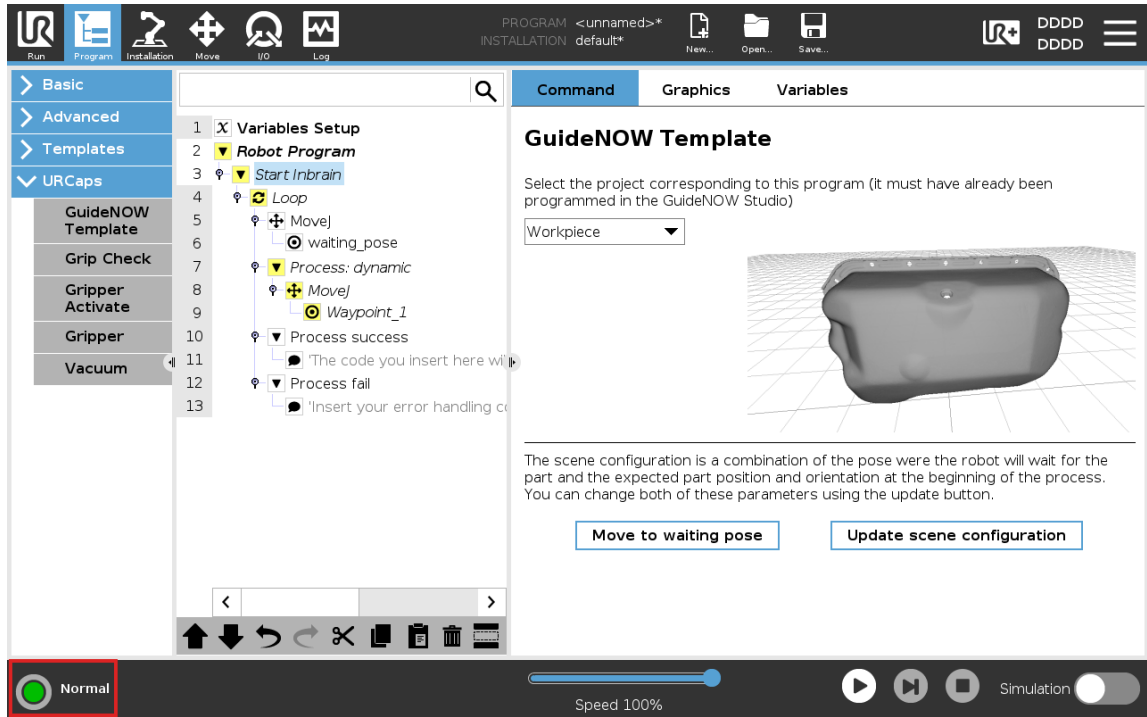




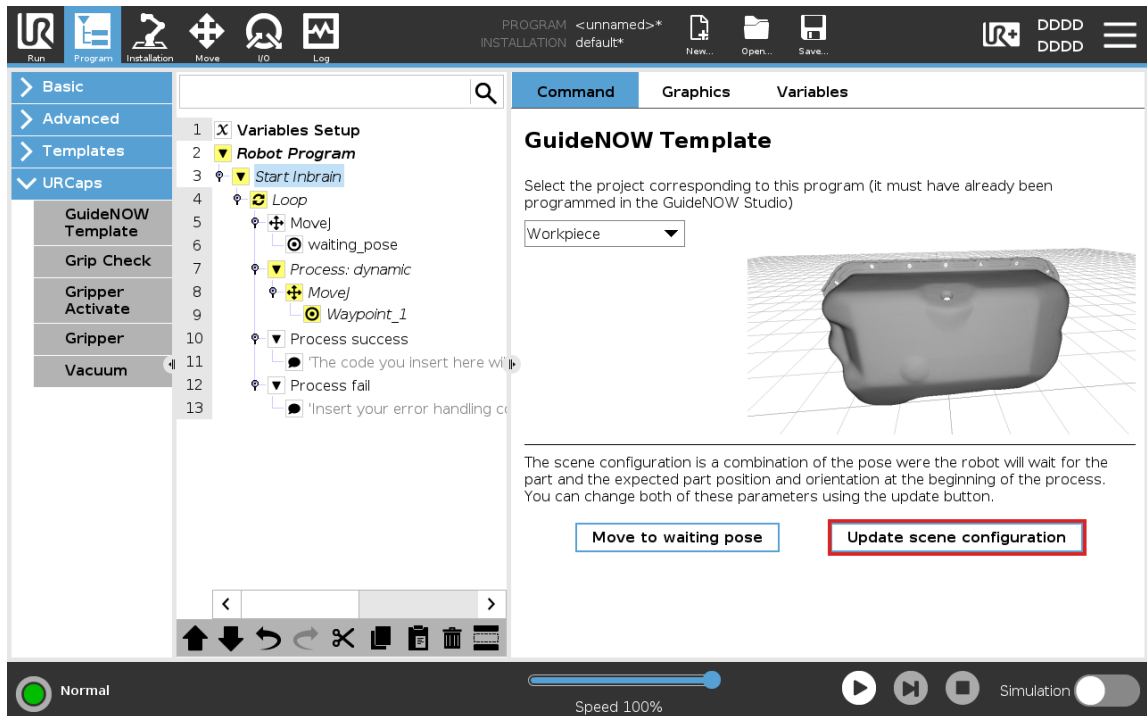
3. Select the “Start Inbrain node”.
4. Verify that the workpiece is selected in the drop-down menu.



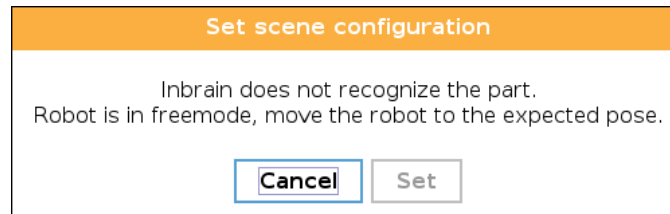
5. Verify that the robot is turned on.



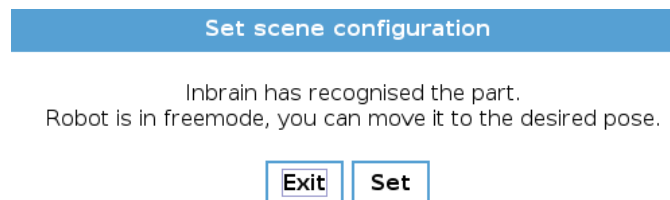
6. Click on “Update Scene configuration”.



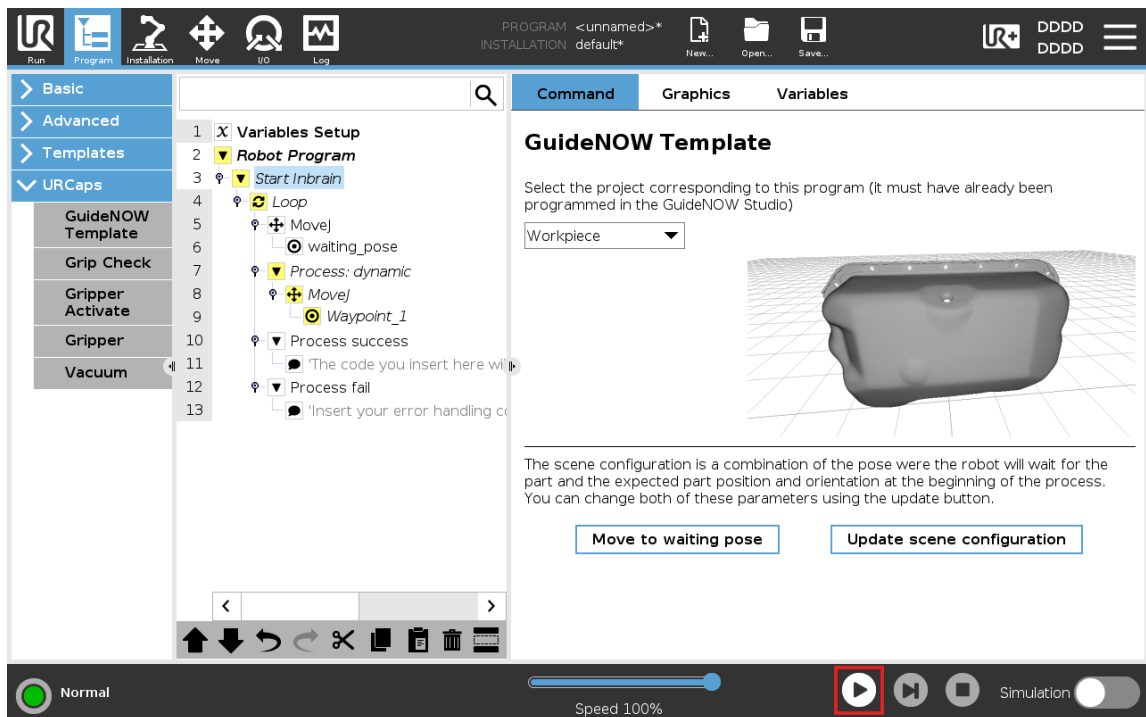
7. Move the robot until the Inbrain has recognized the part.



8. Once the popup window turns blue, it's time to move the robot into its "waiting pose," which is the position it will maintain as the part enters its field of view.



9. You can now start your first program.



The robot should recognize the part and follow it until it is out of range, then return to its waiting pose until it recognizes it again and goes through the process once more.

You can now go through the [Going Further](#) page to learn more about the different features of the GuideNOW URCaps.