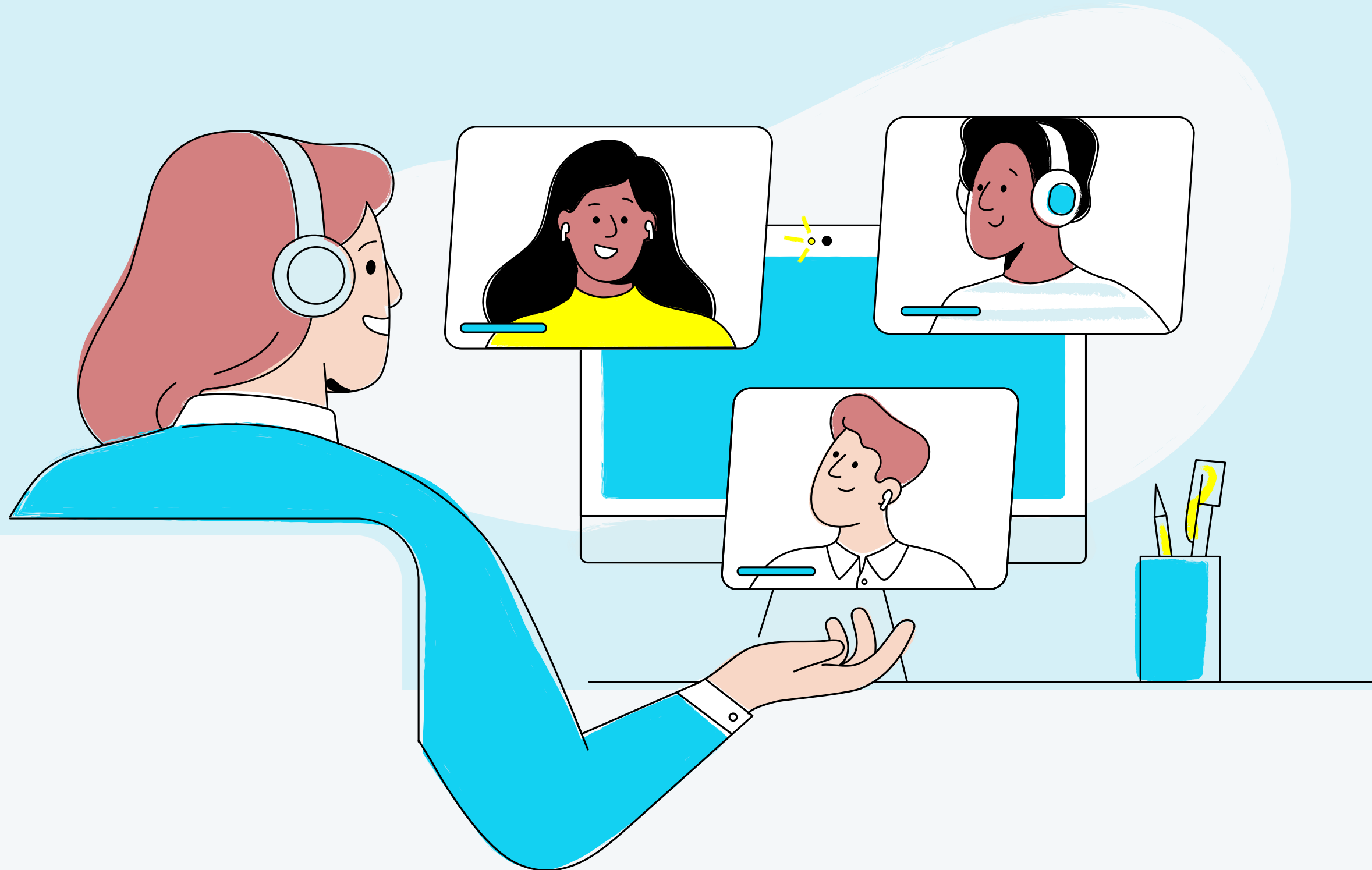
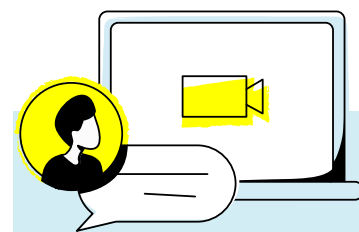


# Is the **FUTURE OF WORK** digital?



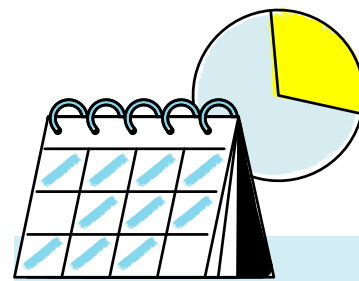
Personio

Please indicate if any of the following **opportunities were newly introduced to your workplace** as a result of the **COVID-19 pandemic**:



*The possibility  
to work from  
home*

**42.9%**



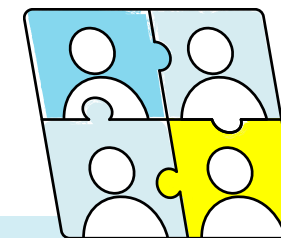
*Flexible  
working hours*

**30.6%**



*Online training*

**25.1%**



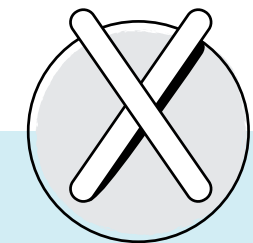
*Online external  
business  
meetings*

**21.4%**



*New digital  
tools for  
communication  
and  
organisation*

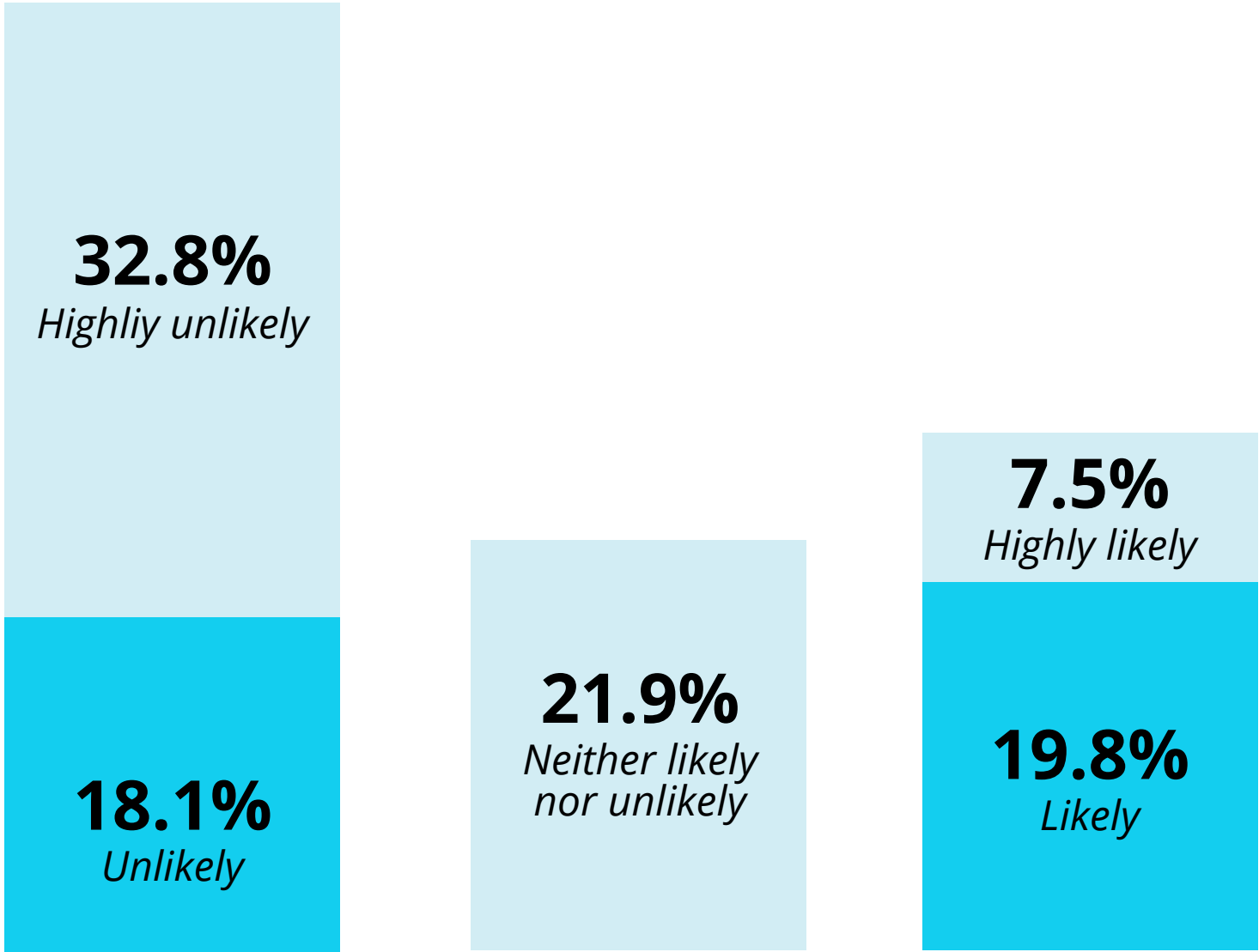
**22.3%**



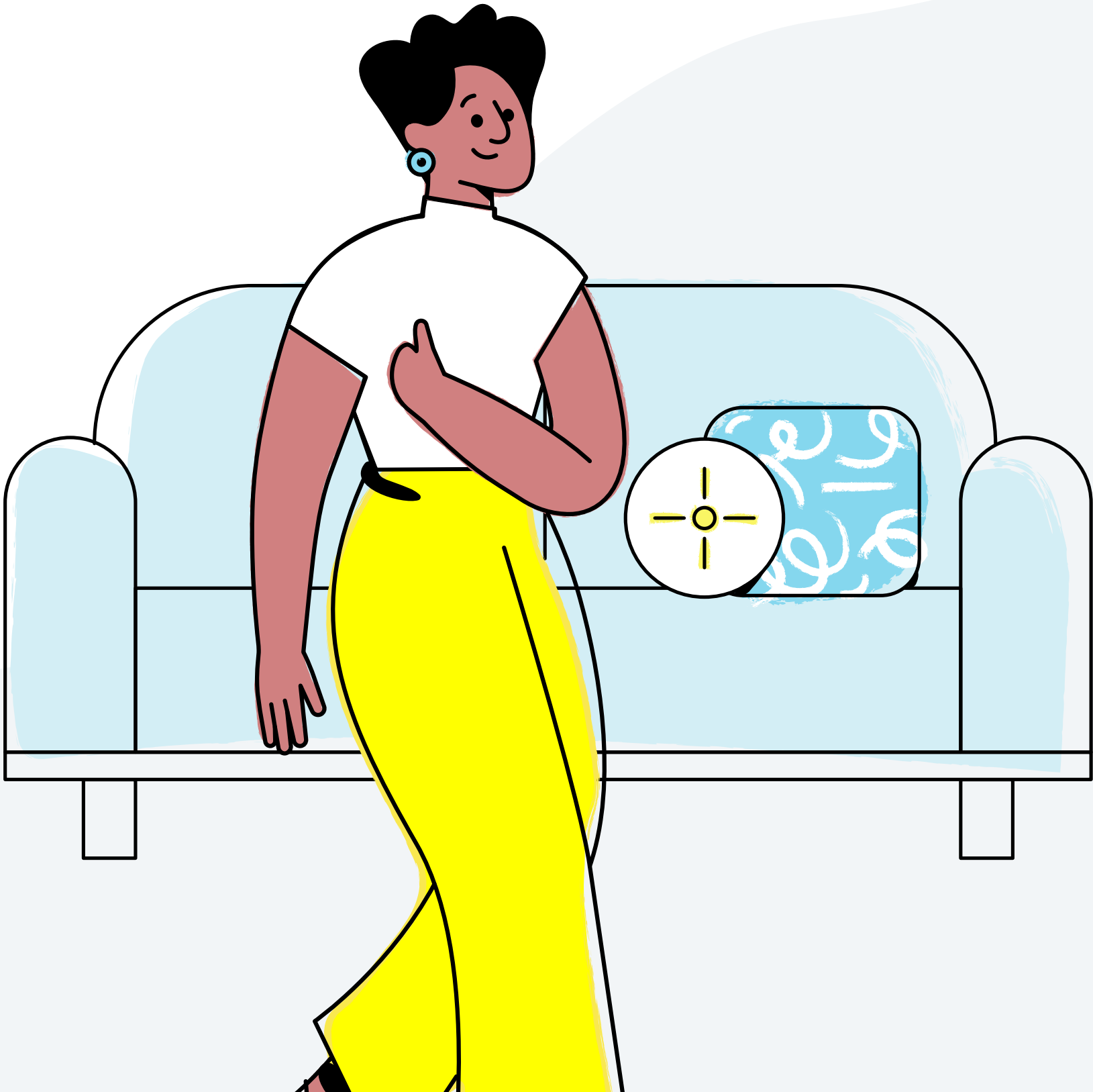
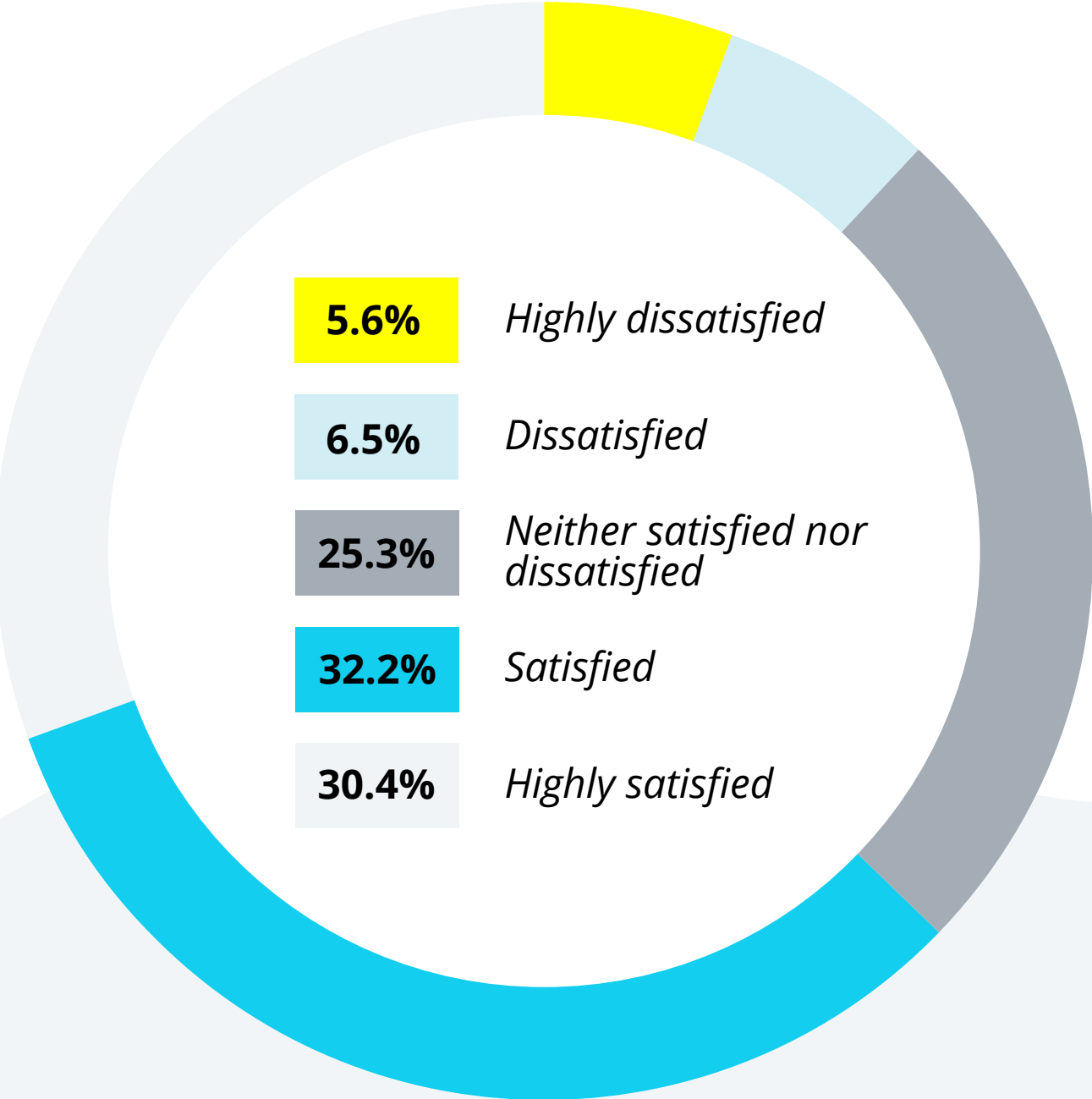
*None of them*

**29.2%**

How likely are you to resign from your current job if your employer ends the flexible work opportunities introduced as a result of the COVID-19 pandemic (e.g. home office, flexible working hours, etc)?

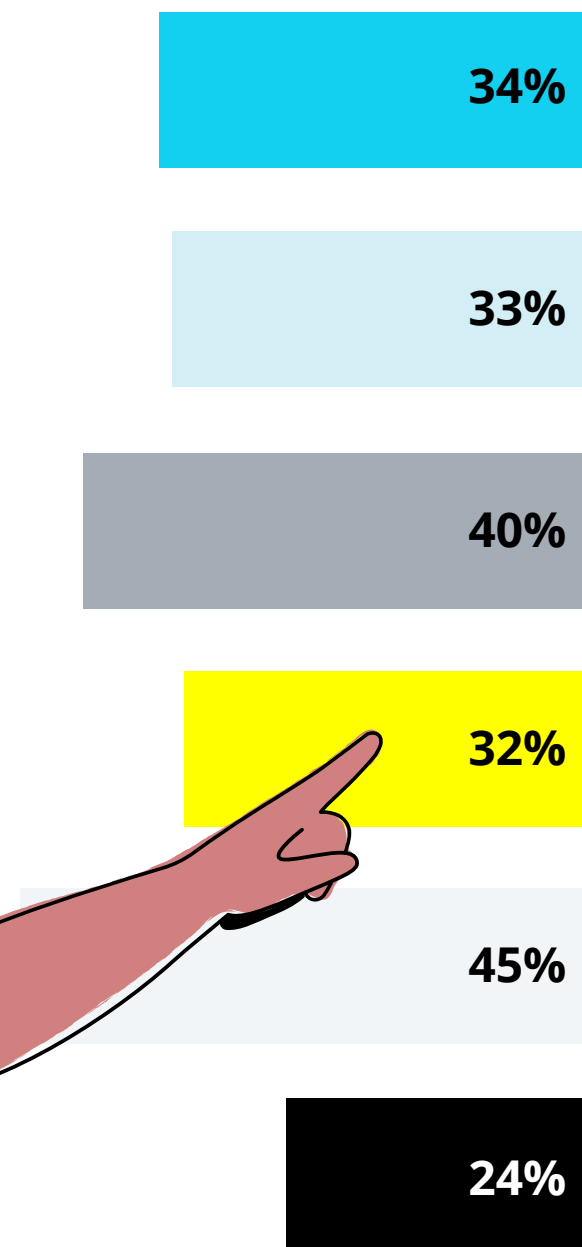


# How satisfied are you with the way your employer has looked after you during the COVID-19 pandemic?





Please rate **how much you agree or disagree** with the following statements:



*"My company has provided training on how to work remotely."*

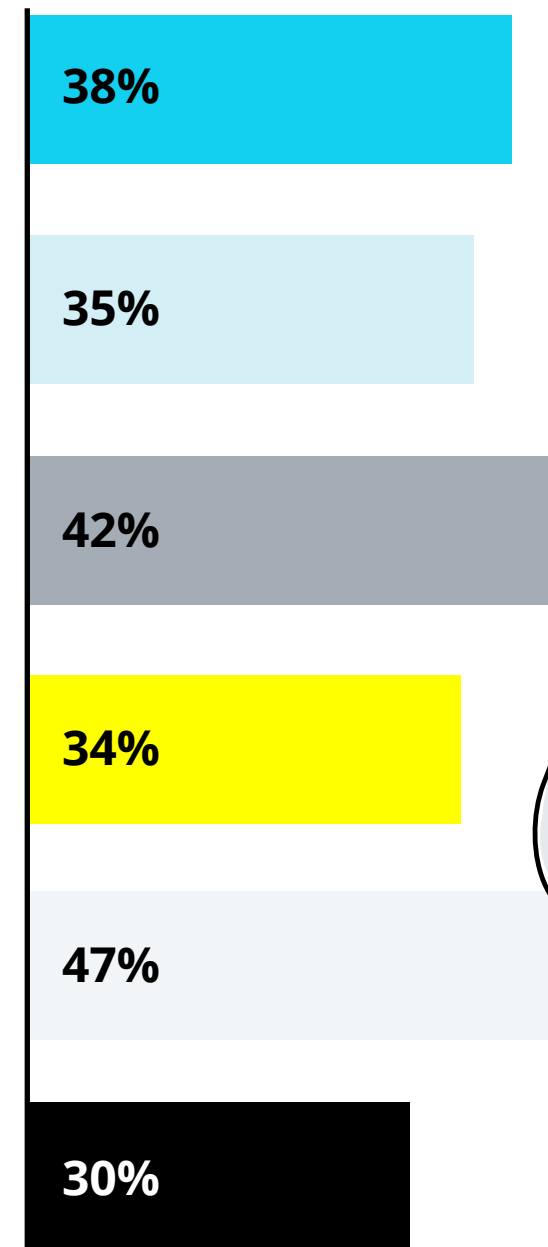
*"My company has provided me with equipment to work from home (i.e. office chair, office table)"*

*"My company has provided a guide with rules and restrictions on how to work from home."*

*"My company offers ongoing coaching on the emotional implications of managing a work-life balance (work/children/self-care)."*

*"My company offered wellbeing and mental health support during COVID-19."*

*"My company has not offered support or adaptations around COVID-19."*



38%

35%

42%

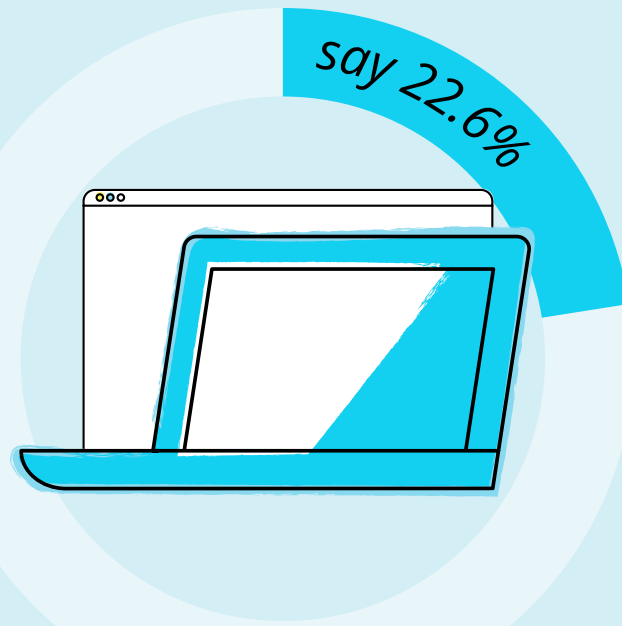
34%

47%

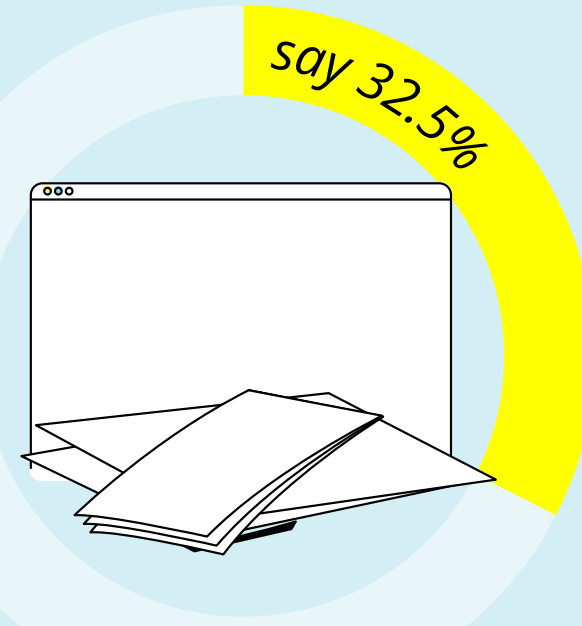
30%



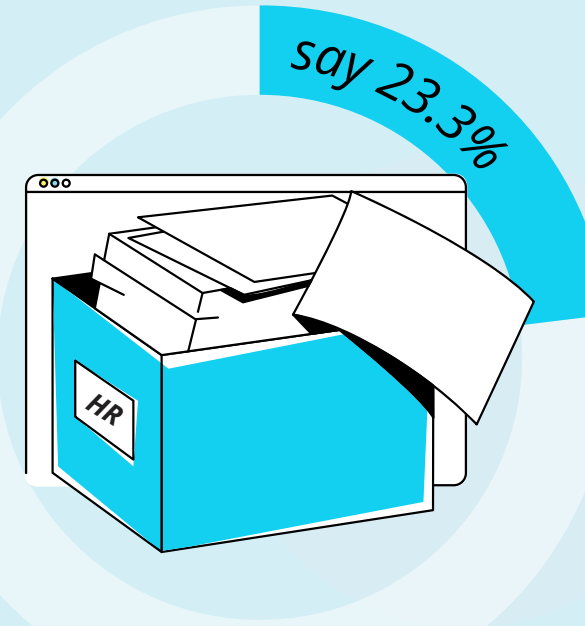
# Which of the following **statements on digitisation** applies best to your company?



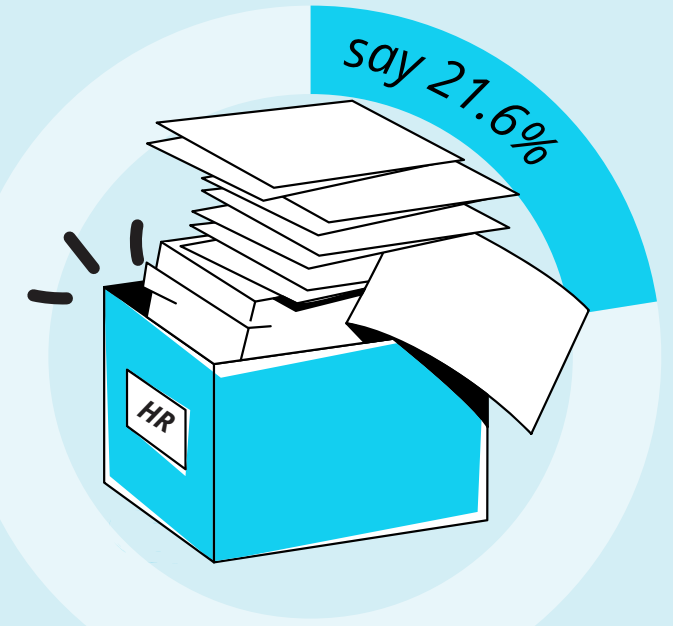
*"We are a digital company that collaborates effectively online and all our processes are digitally enabled."*



*"We have digitised our processes but our people and culture are not ready for a complete digital shift."*

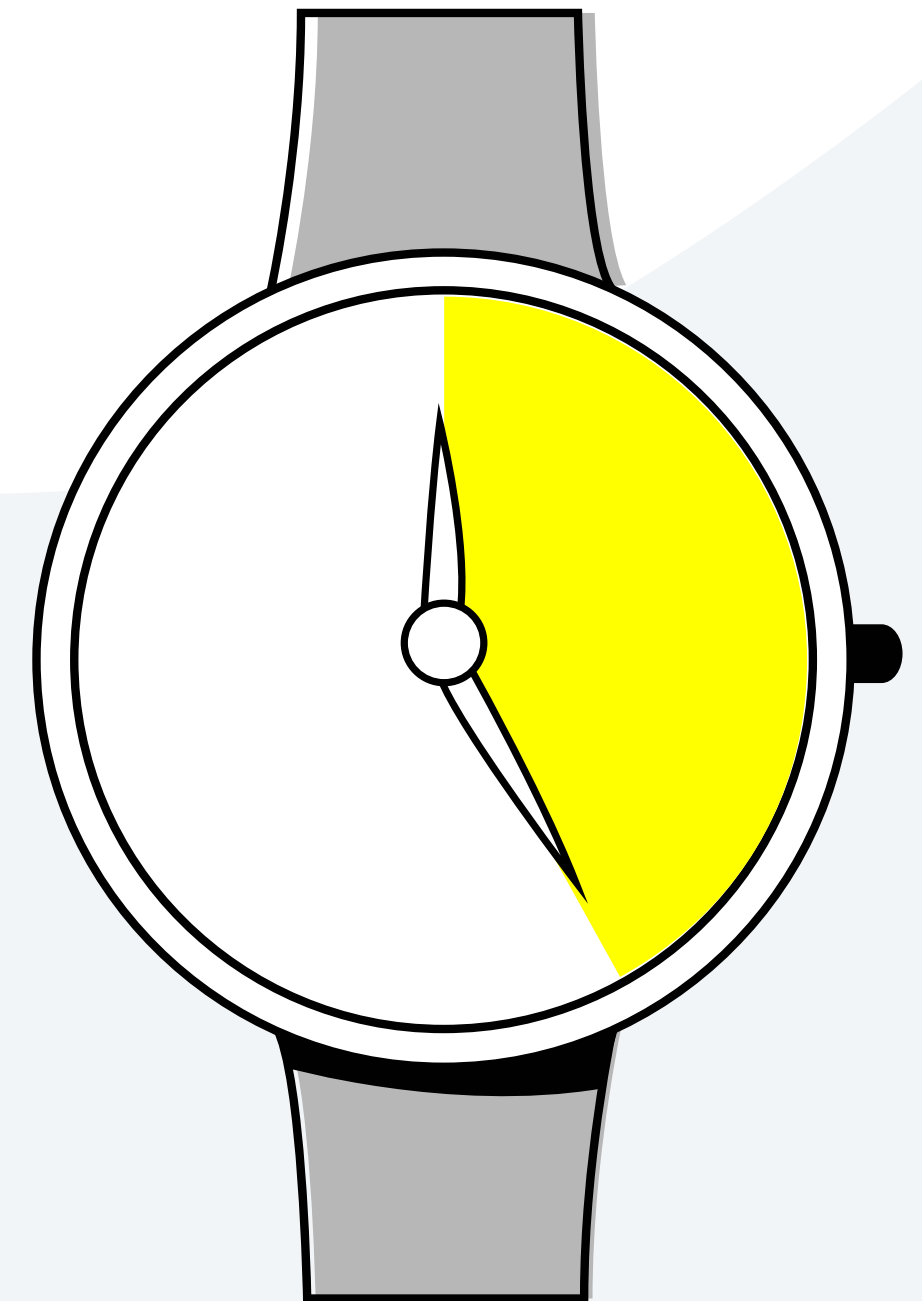
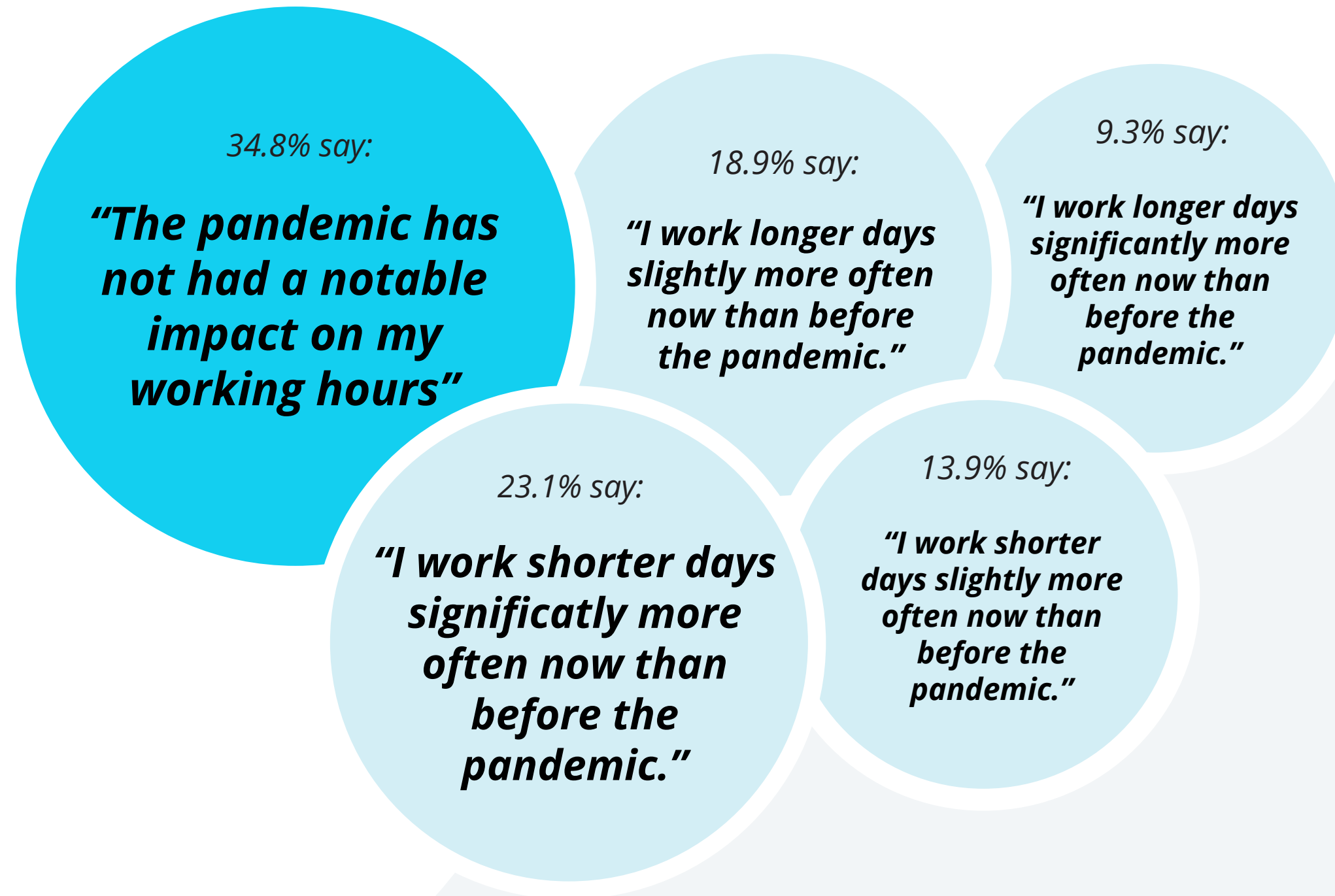


*"We have attempted a digital shift and have faced several challenges that have restricted further adoption."*

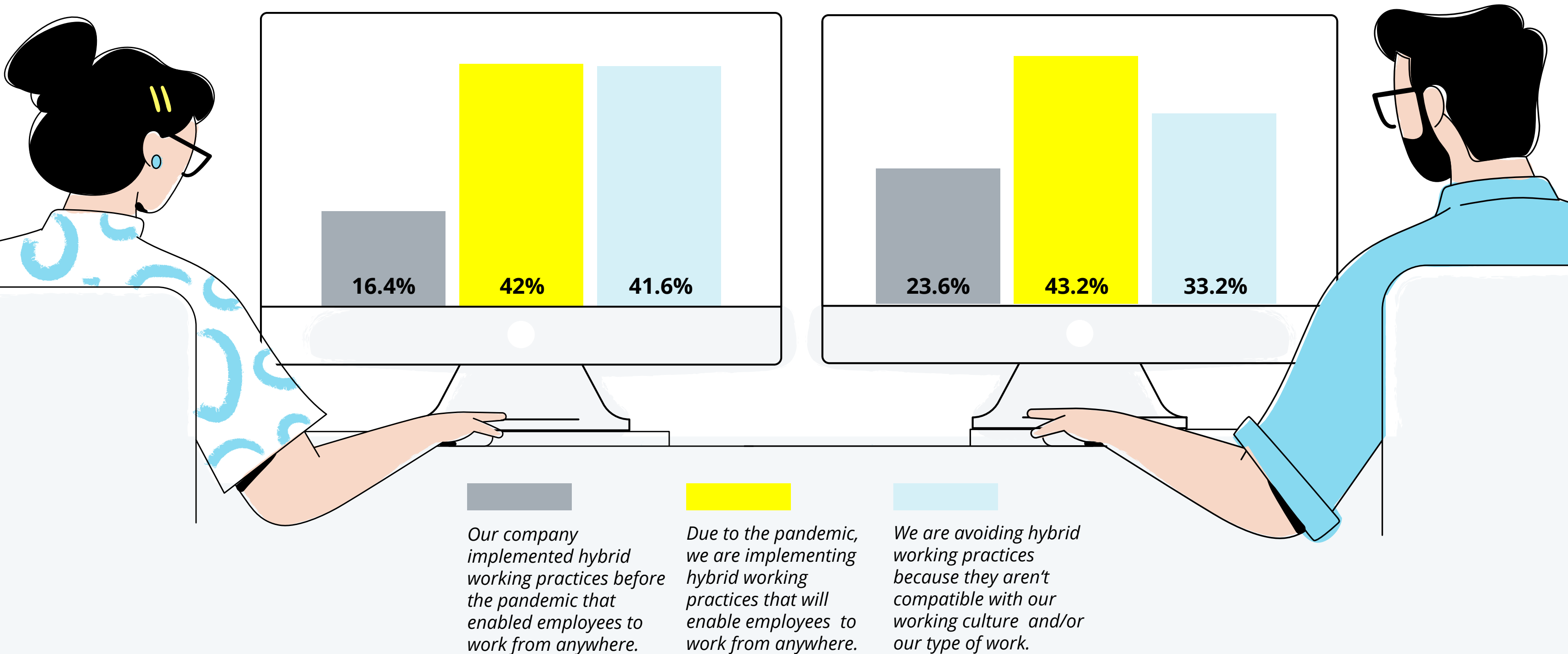


*"We are consciously avoiding digital processes and adaptations."*

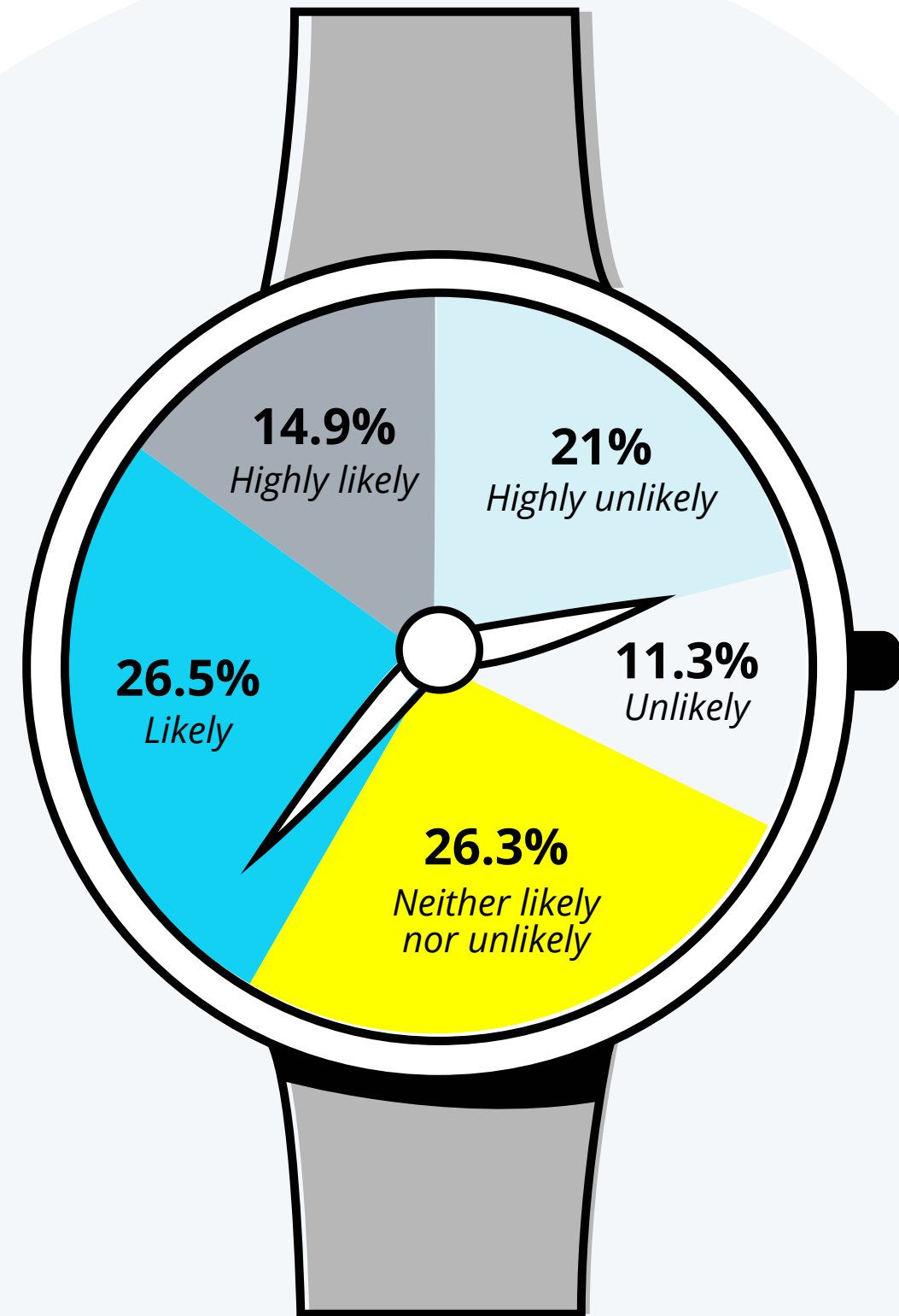
# To what extent have the **COVID-19** restrictions impacted your working hours?



# Which of the following **statements on hybrid working practices** applies best to your company?



How likely is that your company will **permanently introduce flexible working hours** as a result of the COVID-19 pandemic?



***"Personio gives you more  
time for what matters:  
people and strategy"***

