

CITY OF ARMADALE

MINUTES

OF CITY STRATEGY COMMITTEE HELD IN THE COMMITTEE ROOM,
ADMINISTRATION CENTRE, 7 ORCHARD AVENUE, ARMADALE ON MONDAY,
12 DECEMBER 2016 AT 7:00PM.

PRESENT: Cr M Geary (Chair)
Cr K Busby
Cr R Butterfield
Cr G Nixon
Cr D M Shaw
Cr C Wielinga
Cr H A Zelones OAM JP

APOLOGIES: Nil

OBSERVERS: Cr L Sargeson
Cr J A Stewart

IN ATTENDANCE: Mr A F Maxwell Executive Director Corporate Services
Mr P Sanders Executive Director Development Services
Mr K Ketterer Executive Director Technical Services
Mr N Kegie Executive Manager Community Services
Mrs F Baxter Executive Manager Corporate Services
Mrs J Sutherland Executive Assistant Corporate Services

PUBLIC: Nil

*“For details of Councillor Membership on this Committee, please refer to the City’s website
– www.armadale.wa.gov.au/your_council/councillors.”*

DISCLAIMER

The Disclaimer for protecting Councillors and staff from liability of information and advice given at Committee meetings was not read as there were no members of the public in attendance.

DECLARATION OF MEMBERS' INTERESTS

Nil

QUESTION TIME

Nil

DEPUTATION

Nil

CONFIRMATION OF MINUTES

RECOMMEND

Minutes of the City Strategy Committee Meeting held on 21 November 2016 be confirmed.

Moved Cr G Nixon

MOTION CARRIED

(7/0)

ITEMS REFERRED FROM INFORMATION BULLETIN - ISSUE 22/2016

- **Progress Report**
Progress Report on Contingency, Operational and Strategic Projects
- **Outstanding Matters and Information Items**
Report on Outstanding Matters – City Strategy Committee
- **Economic Development**
Tourism and Visitor Centre Report
- **Donations/Grants/Contributions**
2016/2017
Annual Contributions
- **Accounting Reports**
Rates Report
- **Report of the Common Seal**

No items were raised for further investigation or report

CONTENTS

CITY STRATEGY COMMITTEE

12 DECEMBER 2016

1. FINANCIAL MANAGEMENT & PLANNING	
1.1 LIST OF ACCOUNTS PAID - NOVEMBER 2016	4
1.2 STATEMENT OF FINANCIAL ACTIVITY	6
2. STRATEGIC PLANNING	
2.1 WUNGONG URBAN - COMMUNITY INFRASTRUCTURE	8
3. MISCELLANEOUS	
3.1 SPRING INTO ARMADALE 2016 - EVALUATION REPORT	21
4. COUNCILLORS' ITEMS.....	23
5. CHIEF EXECUTIVE OFFICER'S REPORT	
NIL	24
SUMMARY OF ATTACHMENTS	25

1.1 - LIST OF ACCOUNTS PAID - NOVEMBER 2016

WARD : ALL
FILE No. : M/708/16
DATE : 6 December 2016
REF : FB
RESPONSIBLE : Executive Director
MANAGER : Corporate Services

In Brief:

- The Report presents, pursuant to Regulation 13(1), (3) and (4) of the *Local Government (Financial Management) Regulations 1996*, the List of Accounts paid for the period 1 November 2016 to 30 November 2016.

Tabled Items

Nil

Officer Interest Declaration

Nil

Strategic Implications

4. Leadership
 - 4.3.1.1 Implement the Annual Budget as derived from the Corporate Business Plan

Legislation Implications

Section 6.10 (d) of the *Local Government Act 1995* refers, i.e.

6.10. Financial management regulations

Regulations may provide for —

- (d) *the general management of, and the authorisation of payments out of —*
 - (i) *the municipal fund; and*
 - (ii) *the trust fund,*
of a local government.

Regulation 13(1), (3) & (4) of the *Local Government (Financial Management) Regulations 1996* refers, i.e.

13. Lists of Accounts

- (1) *If the local government has delegated to the CEO the exercise of its power to make payments from the municipal fund or the trust fund, a list of accounts paid by the CEO is to be prepared each month showing for each account paid since the last such list was prepared —*
 - (a) *the payee's name;*
 - (b) *the amount of the payment;*
 - (c) *the date of the payment; and*
 - (d) *sufficient information to identify the transaction.*

- (3) *A list prepared under subregulation (1) is to be —*
- (a) *presented to the council at the next ordinary meeting of the council after the list is prepared; and*
 - (b) *recorded in the minutes of that meeting.*
- (4) *After the list referred to in subregulation (1) has been prepared for a month the total of all other outstanding accounts is to be calculated and a statement of that amount is to be presented to the council at the meeting referred to in subregulation (3)(a).*

Council Policy/Local Law Implications

Nil

Budget/Financial Implications

All accounts paid have been duly incurred and authorised for payment as per approved purchasing and payment procedures.

Consultation

Nil

BACKGROUND

Pursuant to Section 5.42 of the *Local Government Act 1995 (Delegation of some powers and duties to CEO)*, Council has resolved to delegate to the CEO (*Primary Delegation No: 150 refers*) the exercise of its powers to make payments from the municipal and trust funds.

COMMENT

The List of Accounts paid for the period 1 November 2016 to 30 November 2016 is presented as an attachment to this report.

ATTACHMENTS

1. Monthly Cheque Listing Report-November 2016

RECOMMEND

CS100/12/16

That Council note the List of Accounts paid as presented in the attachment to this report and summarised as follows:

Municipal Fund

Accounts paid totalling \$11,219,620.08 on Vouchers 27690–27816, Batch 1975-1986, 1988, Direct Debits and PY01.10-PY01.11.

Trust Fund

Accounts paid totalling \$213,180.84 on Vouchers 5778-5847, Direct Debits and Batch 1987.

Moved Cr D M Shaw
MOTION CARRIED

(7/0)

1.2 - STATEMENT OF FINANCIAL ACTIVITY

WARD : ALL
FILE No. : M/709/16
DATE : 7 December 2016
REF : FB
RESPONSIBLE : Executive Director
MANAGER : Corporate Services

In Brief:

- This Report presents the City's Monthly Financial Report for the five (5) month period ended 30 November 2016.
- The Report recommendation is to accept the Financial Report noting there are no reportable actual to budget material variances for the period.

Tabled Items

Nil

Officer Interest Declaration

Nil

Strategic Implications

4. Leadership
 - 4.3.1.1 Implement the Annual Budget as derived from the Corporate Business Plan

Legislation Implications

Local Government Act 1995 – Part 6 – Division 3 – Reporting on Activities and Finance
Local Government (Financial Management) Regulations – Part 4 – Financial Reports.

Council Policy/Local Law Implications

Nil

Budget/Financial Implications

The Statement of Financial Activity, as presented, refers and explains.

Consultation

Nil

BACKGROUND

A local government is required to prepare a statement of financial activity reporting on the revenue and expenditure as set out in the annual budget for that month. The details in the statement are those as prescribed and the statement is to be reported to Council.

COMMENT

Presented as an attachment is the Monthly Statement of Financial Activity for the five (5) month period ended 30 November 2016.

For the purposes of reporting material variances from the Statement of Financial Activity, indicators, as resolved by Council, have been applied.

These indicators are:

Revenue

- Material variances are identified where, for the period being reported, the actual varies to the budget by an amount of (+) or (-) \$100,000 and in these instances an explanatory comment has been provided.

Expense

- Material variances are identified where, for the period being reported, the actual varies to the budget by an amount of (+) or (-) \$100,000 and in these instances an explanatory comment has been provided.

For the purposes of explaining each Material Variance, a three part approach has been taken. The parts are:

- Period Variation
Relates specifically to the value of the Variance between the Budget and Actual figures for the period of the report.
- Primary Reason
Explains the primary reasons for the period Variance. As the report is aimed at a higher level analysis, minor contributing factors are not reported.
- Budget Impact
Forecasts the likely \$ impact on the Annual Budget position. It is important to note that figures in this part are 'indicative only' at the time of reporting, for circumstances may subsequently change.

ATTACHMENTS

- Monthly Financial Report - November 2016

RECOMMEND

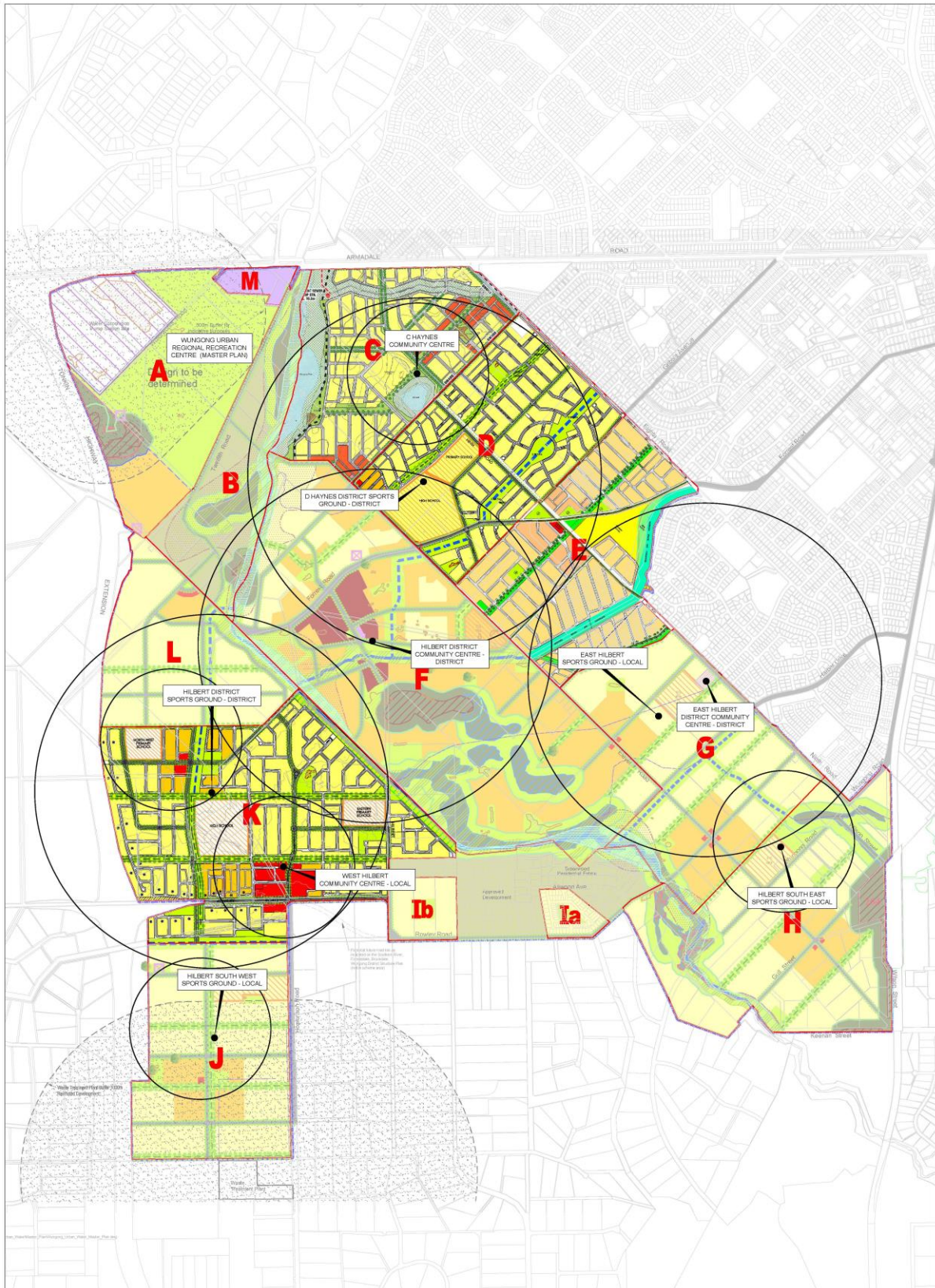
CS101/12/16

That Council:

- pursuant to Regulation 34 of the *Local Government (Financial Management) Regulations 1996* (Financial Activity Statement Report) accepts the Statement of Financial Activity for the five (5) month period ended 30 November 2016; and**
- notes there are no reportable actual to budget material variances for the period.**

Moved Cr G Nixon
MOTION CARRIED

(7/0)



2.1 - WUNGONG URBAN - COMMUNITY INFRASTRUCTURE

WARD : ALL
FILE No. : M/685/16
DATE : 25 November 2016
REF : NK
RESPONSIBLE : Executive Director
MANAGER : Community Services

In Brief:

This report provides information on the community facilities planned for the Wungong Urban development in the context of the current review by the Metropolitan Redevelopment Authority of the Wungong Urban Development Contribution Scheme.

Recommend that Council:

1. endorses the proposed schedule of 10 Community Infrastructure projects for Wungong Urban for the purposes of;
 - a) Providing updated information to the Metropolitan Redevelopment Authority for the Wungong Urban Development Contribution Scheme Review
 - b) Providing input into the upcoming review of the City's Community Infrastructure Plan
 - c) Providing information for Council's consideration in the next review of the City's Corporate Business Plan/Long Term Financial Plan
2. seeks the MRA's comments on how it proposes to address this concern.

Tabled Items

Nil

Officer Interest Declaration

Nil

Strategic Implications

- 1.1 A strong sense of community spirit
 - 1.1.1 Provide opportunities to connect individuals to each other and the wider community
 - 1.1.2 Build Interdependent and resilient community groups
- 1.2 Active community life that is safe and healthy
 - 1.2.2 Provide opportunities to improve health outcomes for everyone
- 1.3 The community has the services and facilities it needs
 - 1.3.1 Plan for services and facilities in existing and emerging communities

Legislation Implications

Nil

Council Policy/Local Law Implications

Nil

Budget/Financial Implications

There are no immediate financial implications linked directly to the recommendations of this report. However, the information contained in the report will be critical to future financial decisions. The amounts indicated in the proposed forecast are at 2017/18 levels and do not require any have been prepared in anticipation of the next version of the Corporate Business Plan/Long Term Financial Plan.

Consultation

1. Metropolitan Redevelopment Authority
2. City Departments
3. Relevant Land Developers
4. Councillor briefing on 30 November 2016

BACKGROUND

Wungong Urban is one of the redevelopment areas administered by the Metropolitan Redevelopment Authority (MRA). Wungong Urban comprises the suburbs of Haynes and Hilbert as well as parts of the suburbs of Wungong and Brookdale. It covers around 1,500ha of land and will ultimately contain more than 16,000 lots. The current population is around 7,800 which will increase over the next 20 - 25 years to a population of more than 50,000 people or around 30% of the City's overall population.

(Some indicators suggest a potential of closer to 70,000) – see section on Population Forecast in this report.)

2011	2016	2036	Beyond
3,600	7,800	30,000	50,000+

The MRA administers a Development Contribution Scheme (DCS) to ensure that the substantive cost of providing the bulk infrastructure, open space and community facilities required as a result of the demand generated by the development is spread equitably amongst land developers. Development Contribution Schemes enable early provision of key infrastructure that would otherwise have to wait until the broader community could find the financial capacity to afford a scenario not acceptable in modern land development. It recognizes that initial capital input from City loans and grants will be limited, but it is the City's ratepayers that must fund the operation, maintenance and renewal of assets in the long term.

The Wungong DCS was last reviewed by the MRA in 2012. It is now under review again with feedback being sought from stakeholders, including the City as part of that process.

While the DCS review covers a wide range of items, this report focusses on the 10 Community Infrastructure projects proposed for Wungong Urban. In summary, these comprise;

- 2 Local level Community Centres
- 2 District Level Community Centres
- 3 Local Level sporting/community facilities collocated with Primary Schools
- 3 District Level sporting/community facilities, of which 2 are collocated with High Schools and 1 located on the Regional Recreational Reserve site at the North Western corner of the development area.

Each of these projects is described in the City's Corporate Business Plan.

The 10 Wungong Urban projects are also incorporated into the *City's Community Infrastructure Plan* (CIP) which sets out the levels of provision for Public Open Space for recreation and Sport, and for community facilities. The CIP in turn informs the City's *Corporate Business Plan and Long Term Financial Plan*. It is intended that the information in this report informs the next revisions of these documents.

As the Wungong DCS has not been reviewed since 2012 there is now a misalignment between the costs in that document and those in the City's Corporate Business Plan/LTFP, which are reviewed annually. An intended outcome of the current Wungong DCS review is that the financial elements of the DCS will be consistent with the City's Corporate Business Plan/LTFP.

A significant amount of work and negotiation took place involving the City and the Armadale Redevelopment Authority (now the MRA) during the development of the initial Wungong DCS to agree on the schedule of 10 Community Infrastructure projects that are included in, and are integral to the DCS. The City has taken an evidence-based approach to come to its position on the overall provision of these community facilities with the method for determining the proposed level of provision outlined later in this report.

A major element of the negotiations in the development of the original DCS related to the provision of Public Open Space (POS). Specifically, that there are enough larger aggregations of POS to accommodate an appropriate number of senior sized sports fields spread geographically throughout the development area. It is recognised and agreed between the City and the MRA that, based on the original forecast population of 45,000, 11 senior sized playing fields capable of multiple sports configurations are required throughout Wungong Urban to meet the demand generated by the development. 7 of these fields are to be delivered at 5 shared school/community sites with the remaining 4 to be located at the Regional Recreation Reserve site at the North Western corner of the development.

It is easier and there is far more flexibility in allocating smaller and different shaped areas of POS for leisure and informal recreation. However, there needed to be a binding mechanism to ensure that larger areas of POS can be delivered. That mechanism is the Wungong DCS in alignment with the City's key strategic documents.

The Wungong DCS is intended to fund 60% of the capital cost of the 10 projects. The remaining 40% comprises anticipated external grants; contributions from the Department of Education towards the cost of shared facilities, and by loans taken out by the City. The current Corporate Business Plan/LTFP contains overall forecasts for the 10 projects as follows;

Table1

Total Cost	\$58,450,300
Developer Contributions	\$35,390,180
Anticipated External Grants	\$12,235,620
Loans	\$10,824,500

An internal review of the scope and costs of the 10 Wungong projects has been undertaken, involving;

- Reviewing the rationale behind the overall level of facility provision
- A general increase in construction costs from 2016/17 to 2017/18
- Including additional allocations for extra fill and drainage for open space
- Increasing the size of the facility at the Haynes District playing field from 700sqm – 1,000sqm
- Comprehensive analysis of the District component of the Regional Recreation Reserve resulting in a more complete scope for this project and a better understanding of the cost of the project

DETAILS OF PROPOSAL

This report recommends that Council endorses the proposed schedule of 10 Community Infrastructure projects for Wungong Urban for the purposes of;

- Providing updated information to the Metropolitan Redevelopment Authority for the Wungong Urban Development Contribution Scheme Review
- Providing input into the upcoming review of the City's Community Infrastructure Plan
- Providing information for Council's consideration in the next review of the Corporate Business Plan and Long Term Financial Plan

The 10 Wungong Urban projects are currently included in the current Long Term Financial Plan as follows;

Table 2

Current Corporate Business Plan/Long Term Financial Plan							
			Cell	Capital Cost	DCS	Grants	Loans
Local Community Centres							
	2019	Hilbert West	K	3,545,000	2,247,000	649,000	649,000
	2020	Haynes	C	3,543,300	2,125,980	708,620	708,700
District Community Centres							
	2020	Hilbert East	G	6,550,000	4,030,000	1,260,000	1,260,000
	2021	Hilbert	F	6,550,000	4,030,000	1,260,000	1,260,000
Local Playing Fields/Facilities							
	2020	Hilbert East	G	2,310,000	1,386,000	712,000	212,000
	2025	Hilbert SE	H	4,200,000	2,520,000	1,000,000	680,000
	2025	Hilbert SW	J	4,200,000	2,520,000	1,000,000	680,000
District Playing Fields/Facilities							
	2019	Haynes	D	7,161,000	4,296,600	1,500,000	1,364,400
	2030	Hilbert	K	7,161,000	4,296,600	1,500,000	1,364,400
	2019	District RRR	A	13,230,000	7,938,000	2,646,000	2,646,000
				58,450,300	35,390,180	12,235,620	10,824,500
% of Total Capital Cost				100%	60%	21%	19%

This report proposes that Council endorses the following schedule to inform the next reviews of the City's Community Infrastructure Plan, the Corporate Business Plan and Long Term Financial Plan, and to inform the current review of the MRA's Wungong Urban Development Contribution Scheme.

Table 3

Proposed Wungong Urban Community Infrastructure Schedule							
(Dates are indicative pending confirmation of the CBP and LTFP)							
			Cell	Capital Cost	DCS	Grants	Loans
Local Community Centres							
	2019	Hilbert West	K	3,767,500	2,260,500	753,500	753,500
	2020	Haynes	C	3,767,500	2,260,500	753,500	753,500
District Community Centres							
	2020	Hilbert East	G	7,095,000	4,257,000	1,419,000	1,419,000
	2021	Hilbert	F	6,963,000	4,177,800	1,392,600	1,392,600
Local Playing Fields/Facilities							
	2020	Hilbert East	G	3,080,000	1,848,000	616,000	616,000
	2025	Hilbert SE	H	5,395,500	3,237,300	1,079,100	1,079,100
	2025	Hilbert SW	J	5,395,500	3,237,300	1,079,100	1,079,100
District Playing Fields/Facilities							
	2019	Haynes	D	8,035,500	4,821,300	1,607,100	1,607,100
	2030	Hilbert	K	6,814,500	4,088,700	1,362,900	1,362,900
	Stage 1: 2019	District RRR	A	13,500,000	8,100,000	2,700,000	2,700,000
				63,814,000	38,288,400	12,762,800	12,762,800
% of Total Capital Cost				100%	60%	20%	20%
Stage 2: Beyond 15 yrs							
		District RRR	A	20,500,000	12,300,000	4,100,000	4,100,000
				84,314,000	50,588,400	16,862,800	16,862,800
% of Total Capital Cost				100%	60%	20%	20%

For the purpose of comparing the proposed schedule with the current CBP/LTFP the dates for delivering the projects have not changed. Given this assumption, the net impact on the current CBP/LTFP of implementing the projects based on the proposed schedule would be **\$4,833,000**. This figure takes into account recurrent operational and renewal allocations as well as the impact the additional loan funds required. A summary breakdown of the major components of the variances is in the table below.

Table 4

	Current CBP/LTFP	Proposed Schedule	Movement per item
Capital Cost	58,450,300	63,814,000	5,363,700
Developer Contributions	(35,390,180)	(38,288,400)	(2,898,220)
External Grants	(12,235,620)	(12,762,800)	(527,180)
Loan Proceeds	(10,824,500)	(12,762,800)	(1,938,300)
Loan Repayments	11,661,700	14,160,400	2,498,700
Operating Cost	15,878,500	17,162,435	1,283,935
Renewal Cost	13,240,800	14,290,960	1,050,160
Fees and Charges	(3,000,000)	(3,000,000)	0
	37,781,000	42,613,795	4,832,795

The timing of delivery of the projects is reviewed annually and is influenced by factors such as economic conditions, rates of growth and the direction the development fronts are taking.

Changes in the timing of delivery will impact the net effect on the CBP/LTFP as the recurrent costs commence from the year projects are delivered. All things being equal, there will be a saving to the forecast net impact if projects are delivered later than the current forecast and conversely additional funding to the forecast would be required if projects are brought forward. Updated information will be provided to Council on these factors as part of the considerations of the next review of the Corporate Business Plan and LTFP.

Other notes regarding the changes between the schedules;

- A general escalator has been applied to account for increased construction costs
- Additional allocations totalling approximately \$6.75Million over the 10 projects have been included for fill and drainage for the playing fields. While these are a capital cost they are 'once-off' and do not attract a recurrent renewal allocation.
- There is an inclusion for an increase in the Haynes District Facility from 700sqm – 1,000sqm
- The most significant variance is for the District component of the Regional Recreation Reserve. This is now proposed to be delivered in 2 stages. Stage 1 (\$13.5 Million) which comprises 2 senior playing fields and a multi-use facility is proposed for delivery in 2019 which is consistent with timing and cost in the current CBP/LTFP (although timing is subject to further review). Stage 2 (\$20.5 Million), which is a larger set of 2 senior playing fields, a larger sporting /community facility and enhanced open spaces, is proposed to be delivered beyond the horizon of the current 15 year CBP/LTFP when the population will be at a level to support the entire facility.

Please note that the District component of the Regional Recreation Reserve comprises 4 playing fields and associated facilities at an estimated cost of \$34 Million, and represents about 30% of the entire Regional Recreation Reserve site. It is the only part of the Regional Recreation Reserve site related to the Wungong DCS. Development of the balance of the Regional Recreation Reserve is outside the scope of this report.

More detailed comments on the various elements influencing the proposal are included in the next section of this report.

COMMENT

ANALYSIS

Rationale behind overall level of provision – Need and Nexus

One of the principles behind developer contributions as stated in the State Planning Policy 3.6 – *Developer Contributions* is that the need for the infrastructure included in the development contribution plan must be clearly demonstrated (need) and the connection between the development and the demand created should be clearly established (nexus).

In the case of Wungong Urban, the City has drawn on a number of standard documents that outline levels of facility provision as well as commissioning or co-commissioning a number of other studies. Some of these studies have been undertaken since the last review of the Wungong DCS in 2012 and so are relevant for this current review. These documents include;

- Liveable Neighbourhoods: *WAPC*
- Guidelines for Community Infrastructure: *Parks Leisure Australia 2012*
- Planning for Community Infrastructure in Growth Areas: *Australian Social and Recreation Research Pty Ltd 2008*
- Active Sporting Reserves Needs Assessment in the City of Armadale: *ABV 2007*
- Active Sporting Reserves Feasibility Study: *ABV 2008*
- Peer Review of the ABV Needs Assessment and Feasibility Studies: *CSS 2009*
- Document Review of relevant studies into the provision of active open space in Wungong: *Planning Consultants Australia 2010*
- Unintended Socio Economic Consequences of reduced supply of Active Open Space in the Perth Outer Metropolitan Growth Areas: *Centre for Sport and Recreation – Curtin University 2012*
- Impacts of Decreased Backyard Sizes in Perth Greenfields Developments: *Centre for Sport and Recreation – Curtin University 2015*
- Average Household Sizes for the Wungong Urban Development Area: *.id 2016*
- Sports Dimensions Guide for Playing Areas: *Department of Sport and Recreation 2016*
- Armadale Wungong Regional Recreation Reserve Concept Study: *UDLA 2016*

The schedule of 10 Community Infrastructure projects, including the sizes of facilities and playing fields is, for a population of 45,000 consistent with all of the documents listed.

In addition, the levels of facility provision in the City's more established areas was identified as a basis for comparison. This comparison found that while some of the facilities in the City's more established areas were older and could be more multi-functional than they are at present (which is being addressed through the Master Planning Initiative), the level of provision as measured by square metres of community use space by population, and the number of people by hectare of open space for playing fields, is greater in established areas over proposed levels of provision in the City's growth areas. That is not to say the amenity provided by open space and community facilities in the growth areas is not good (e.g, the quality and functionality of new facilities in the growth areas) but it does demonstrate that the

City is not proposing anything more in the growth areas than currently exists in the City's established areas.

An important point made in the City's CIP is;

"These "community" levels of service proposed for the growth areas, while considered adequate, reflect the lower end of best practice and standards when compared with local governments across Australia. Every effort is required therefore, to ensure not only that the ratios can be achieved through the development of all the elements outlined in this plan, but opportunities are taken to exceed them."

Population Forecast

The schedule of 10 community infrastructure projects is based on a forecast population of 45,000 and 16,000 lots. This equates to an average household size of 2.81 people which is about the average household size over the entire City. Experience suggests however, that outer metropolitan growth areas attract significant numbers of young families with average household sizes above 3. With such a major development as Wungong Urban, a small increase in average household size can have a major impact on the overall population of the development and therefore the level of facility and open space provision required.

To better inform all stakeholders, .id was recently commissioned to undertake a study to research average household sizes in other outer metropolitan growth areas and analyse this data against the characteristics of Wungong Urban to identify a forecast average household size for Wungong Urban. This study looked at 65 growth areas in Perth, Melbourne and Sydney that completed their major growth phase before the 2011 census so that actual data and not just forecasts could be used. The study found that a more realistic range for average household size in Wungong Urban was 3.08 – 3.16 people.

Based on the forecast 16,000 lots, this amended average household size will result in a forecast population of around 50,000 rather than the current forecast of 45,000. The MRA has recently indicated that the lot yield may exceed 16,000, possibly to somewhere between 18,000 and 22,000 which would impact population forecast as detailed in the following table;

Lots	@3.08	@3.16
16,000	49,280	50,560
18,000	55,440	56,880
22,000	67,760	69,520

It is important that the demographics of the emerging Wungong community are monitored as it grows. Should it be the upper end of these forecasts which look to becoming the reality, future reviews of the DCS will need to consider additional community facilities in order to meet the increased demand. In that instance Council will also need to consider the financial implications of additional community facilities.

District Provision of sports fields and community facilities at the Regional Recreation Reserve

As previously mentioned in this report, there is a need for 11 senior sized playing fields in Wungong Urban. 7 of these are to be delivered through a shared arrangement on collocated Department of Education sites. The remaining 4 playing fields along with appropriate sporting/community facilities are to be delivered as a District level component of the Regional Recreation Reserve located at the North Western end of the development.

With regard to the Regional Recreation Reserve, it is important to note that it is only the 4 playing fields and associated facilities that are included in the Wungong DCS. This is because the demand for the 4 fields and associated facilities is directly linked to the development area whereas the broader Regional function serves a far greater catchment. The (4 fields) project which covers about 16 hectares (comparable with Gwynne Park) represents about 30% of the overall Regional Recreation Reserve (RRR) area.

While some preliminary work was undertaken with the Armadale Redevelopment Authority (ARA) on concept for the Regional Recreation Reserve at the time the original DCS was developed, how the District component related to the overall RRR concept was not made clear. There were also a number of preliminary assumptions made regarding costs and the number and sizes of buildings on the site. In addition there were some quite significant exclusions in the preliminary costing models (such as bulk earthworks and internal roads). This project sits in the City's current Long Term Financial Plan for delivery in 2019 at a cost of \$13,230,000 which is unrealistic in terms of delivering the (4 field) project as envisaged.

This current DCS review has provided the impetus to undertake a comprehensive analysis of the Regional Recreation Reserve and to clarify the District level component. Accordingly, in preparation for the DCS review, UDLA (Landscape Design Consultants) was commissioned to undertake a concept study to define and cost (at concept level) this District component. While a final design and layout for this District facility will be determined based on what sports reside there, the concept has provided a sound basis for determining costs.

Taking into account the points made above, a realistic cost for a District level facility comprising the equivalent of 4 senior playing fields and associated facilities is around \$34Million rather than the \$13.2Million currently in the CBP/LTFP.

As indicated previously it is proposed that the project would be delivered in 2 stages. Stage 1 would comprise 2 playing fields and a multi-use facility. This is forecast to cost \$13.5Million and is likely to be required within 5 years. The timing and funding is consistent with the current Corporate Business Plan/LTFP albeit for a reduced project scope. Stage 2 which includes a larger pair of senior fields, a larger facility and more developed open space at a forecast cost of \$20.5Million is not likely to be required until 2032 or beyond when it is anticipated that the population of Wungong Urban can support the entire facility.

An alternative could be to deliver the entire project in one stage and complete it sooner than indicated. This is not supported for 2 reasons;

- It is considered a higher priority to ensure that playing fields are delivered on the collocated school sites spread throughout the development area first, rather than providing a more isolated site for the emerging community.
- Bringing the entire project forward would require additional funding beyond the capacity of the Long Term Financial Plan

Increasing the size of the Haynes District Sports/Community Facility from 700sqm to 1,000sqm.

Apart from the significant revisions to the District component of the Regional Recreation Reserve, the only revision to the size of a facility for the other 9 projects is at Haynes District Sports/Community facility. The proposed increase, from 700sqm to 1,000sqm draws on the experience of providing similar facilities in Piara Waters and Harrisdale and the demand that is evident for the new facilities at these sites. The Haynes District Sports ground will be similar to the City's East Harrisdale site, comprising a High School, a Primary School and an area of POS for multiple sporting fields. It is fully expected that a facility of 1,000sqm, which is a similar size to new facilities at Piara Waters and East Harrisdale as well as the upcoming Piara Waters South facility will be heavily utilised by the community.

Additional Fill and Drainage Allocation

With the experience of delivering the Piara Waters and East Harrisdale playing fields, it is evident that additional fill and drainage is required at similar sites throughout the City. This has been taken into account in developing the revised Wungong Urban Community Infrastructure schedule. The total additional allocation for fill over the 10 projects is approximately \$6.75Million which although a capital cost is 'once-off' and does not attract a recurrent renewal allocation.

Timing of Projects

The experience of delivering projects in Piara Waters and Harrisdale also indicates a need to remain flexible about the timing of delivery of Community facilities with the strength and direction of development fronts influencing when they may be required. For example, as recently as 2011 the East Harrisdale Community and Sporting facility was envisaged to be built no earlier than around 2025. However, because of the rate and direction of growth the project was bought forward. Consequently, the collocated Primary school is now open; the adjacent High School opens in February 2017, the Public Open Space is now in use and the new community facility will open early in 2017.

The forecast dates for the delivery of projects are reviewed annually with factors such as economic conditions, rates of growth and the direction the development fronts are taking all influencing when facilities will be needed. The best available information on these influencing factors will be available as part of Council's considerations on the next versions of the Corporate Business Plan and Long Term Financial Plan. Having established general trends relating to the timing of projects, Council can then determine the exact years they are to be delivered in the context of all the priorities under consideration.

OPTIONS

1. Endorse the proposed Wungong Urban Community Infrastructure schedule in this report for the purpose of;
 - Providing updated information to the Metropolitan Redevelopment Authority for the Wungong Urban Development Contribution Scheme Review
 - Providing input into the upcoming review of the City's Community Infrastructure Plan
 - Providing information for Council's consideration in the next review of the City's Long Term Financial Plan

This is the preferred option as it provides a clear statement of intent on the provision of community facilities in Wungong Urban in relation to the current review of the Wungong DCS.

2. Recommit this item and request further information prior to further consideration (not recommended as negotiations are advancing)

CONCLUSION

Wungong Urban and the 50,000 or so people living there will ultimately represent about 30% (possibly higher) of the City's population. The characteristics of that community are being influenced at this very early stage by the way it is being designed and by the community facilities that are being planned. The timely provision of quality open space and facilities to allow for a healthy and connected lifestyle is very important to assist in building a sense of community through social and recreational interaction.

The quality and type of construction will have significant impact on the City's future asset management costs, as will the manner of meeting operating, maintenance and renewal costs (e.g. Specified Area Rates?)

The current review by the Metropolitan Redevelopment Authority of the Wungong Urban Development Contribution Scheme provides an opportunity for Council to reiterate its position on the provision of community facilities in Wungong Urban and to ensure that information in relevant key strategic documents is aligned.

ATTACHMENTS

There are no attachments for this report.

Committee Discussion

The aspect of a possible forecast higher lot yield (i.e. from 16,000 to 22,000) and forecast population increase (i.e. from 50,560 to 69,520) on community infrastructure needs within the development area was raised by Committee as a concern requiring comment/response from the MRA and continual monitoring by the City to avoid a potential future community infrastructure gap – hence the agreed additional part (2) to the Committee Recommendation.

RECOMMEND

CS102/12/16

That Council:

1. **Endorse the proposed Wungong Urban Community Infrastructure schedule for the purpose of;**
 - a) **Providing updated information to the Metropolitan Redevelopment Authority for the Wungong Urban Development Contribution Scheme Review**
 - b) **Providing input into the upcoming review of the City's Community Infrastructure Plan**
 - c) **Providing information for Council's consideration in the next review of the City's Corporate Business Plan and Long Term Financial Plan**

Proposed Wungong Urban Community Infrastructure Schedule						
(Dates are indicative pending confirmation in the CBP and LTFP)						
Local Community Centres		Cell	Capital Cost	DCS	Grants	Loans
2019	Hilbert West	K	3,767,500	2,260,500	753,500	753,500
2020	Haynes	C	3,767,500	2,260,500	753,500	753,500
District Community Centres						
2020	Hilbert East	G	7,095,000	4,257,000	1,419,000	1,419,000
2021	Hilbert	F	6,963,000	4,177,800	1,392,600	1,392,600
Local Playing Fields/Facilities						
2020	Hilbert East	G	3,080,000	1,848,000	616,000	616,000
2025	Hilbert SE	H	5,395,500	3,237,300	1,079,100	1,079,100
2025	Hilbert SW	J	5,395,500	3,237,300	1,079,100	1,079,100
District Playing Fields/Facilities						
2019	Haynes	D	8,035,500	4,821,300	1,607,100	1,607,100
2030	Hilbert	K	6,814,500	4,088,700	1,362,900	1,362,900
Stage 1: 2019	District RRR	A	13,500,000	8,100,000	2,700,000	2,700,000
			63,814,000	38,288,400	12,762,800	12,762,800
% of Total Capital Cost			100%	60%	20%	20%
Stage 2: Beyond 15 yrs	District RRR	A	20,500,000	12,300,000	4,100,000	4,100,000
			84,314,000	50,588,400	16,862,800	16,862,800
% of Total Capital Cost			100%	60%	20%	20%

2. **Based on its concern about the sufficiency of community infrastructure space and funding given forecast higher lot and therefore population numbers, seeks the MRA's comments on how it proposes to address this concern.**

**Moved Cr D M Shaw
MOTION CARRIED**

(7/0)

3.1 - SPRING INTO ARMADALE 2016 - EVALUATION REPORT

WARD : ALL
FILE No. : M/681/16
DATE : 24 November 2016
REF : SJ
RESPONSIBLE : Chief Executive Officer
MANAGER

In Brief:

- To provide council with an update of the 2016 ‘Spring into Armadale’ campaign, and provide an evaluation report on activities held during the period 1 August to 31 October 2016.
- Receive and note the attached 2016 “Spring into Armadale” Marketing Campaign report.

Tabled Items

Nil

Officer Interest Declaration

Nil

Strategic Implications

Strategic Community Plan:

3.1.1 Promote Armadale and its potential business opportunities to facilitate targeted economic development.

3.4.1 Promote the district and opportunities for visitors to the region.

3.4.2 Leverage existing strengths to diversify and expand tourism product in the region.

Legislation Implications

Nil

Council Policy/Local Law Implications

Nil

Budget/Financial Implications

Nil

Consultation

1. Tourism Business Operators

BACKGROUND

In November 2014 Council endorsed the new “Tourism Destination Marketing Strategy 2015-2019” (C50/11/14 – Council Meeting 10 November 2014) including recommendations and actions to be undertaken to promote the Armadale district a destination of choice from a tourism development focus.

DETAILS OF PROPOSAL

The second “Spring into Armadale” marketing campaign was implemented from 1 August to 31 October 2016 in alignment with the Tourism Destination Marketing Strategy (TDMS) 2014 –2018.

Development of the 2016 campaign was underpinned by Strategies 1.1 and 3.4 from the TDMS, as well as the goal of challenging existing perceptions of prospective visitors by delivering a high quality experience that encourages them to visit and return.

- Strategy 1.1 - Capitalise on the region’s established and growing events to develop event based tourism opportunities.
- Strategy 3.4 - Raise awareness and appeal of the Armadale region as an outdoor leisure destination through collaborative promotion of the experiences, service and attractions available.

By targeting local visitors to rediscover and experience the region and then become advocates, we are seeking to achieve greater recognition of Armadale (in a broader context) as a desirable destination. Armadale will then become more attractive to the intrastate and national markets, as well as the rapidly growing market of visiting friends and relatives. This should all lead to an increased spend on economic yield from tourism in Armadale.

The 2016 “Spring into Armadale” campaign incorporated events and activities from 1 August to 31 October and was restructured around categories/common themes to simplify our message to the end user.

Categories included:

- Music, Art, Festival and Culture
- Experiences and Activities
- Food, Wine and Markets
- Kids Activities
- Sports, Trails and Walks
- History and Heritage.

COMMENT

Whilst the City delivered key events in the region during the campaign, community groups and industry stakeholders from tourism, arts, retail food and sporting facilities provided pivotal events and contributed towards the campaign, as destination hosts. Forty (40) individual and unique activities and events were delivered as part of Spring into Armadale at forty four (44) venues, and the campaign profiled forty five (45) food and beverage outlets in its advertising.

The City worked collaboratively with these stakeholders to coordinate the campaign, and bring this program to fruition, which included meeting the goal of strengthening existing local partnerships and tourism based initiatives.

Some key indicators from “Spring into Armadale” 2016 include:

- Event Program - 15,000 full colour A5 copies distributed
- ¾ page newspaper wrap - circulated to over 53,000 homes in the Armadale, Gosnells and Serpentine Jarrahdale local government areas.
- 3 months digital advertising banner with Experience Perth resulted in 170,383 impressions for “Spring into Armadale”.

- Araluen Tulip Festival Visitor Centre Pop-Up Centre - Visitor centre staff served 7,894 people; and distributed over 2,500 visitor guides and 5,000 “Spring into Armadale” Festival Booklets during the festival.
- WA Weekender – 2 segments on WA Weekender TV show reached 152,000 viewers, and also included a competition with a weekend getaway prize in Armadale that attracted 1,250 entries.
- The “Spring into Armadale” Fashion Show held at Araluen Golf Resort was the final event in the calendar. This event attracted 156 guests with notable dignitaries including his Excellency the Honourable Nazaruddin Jaafar Consular General of Malaysia, Hon. Tony Simpson MLA (representing the Premier of Western Australia), Senator Linda Reynolds, Dr Tony Buti MLA, along with the City of Armadale Mayor, CEO and Councillors.

CONCLUSION

The ongoing promotional and marketing aspects of this annual campaign, along with the implementation of other key actions from the City’s Tourism Destination Strategy, are believed to have considerably enhanced Armadale’s regional tourism profile.

The City will continue to take a more targeted approach to promote Spring into Armadale to key target audiences in upcoming years (primarily Perth metropolitan based day-trippers based on 2016 data), seeking to increase visitation to the Armadale region and highlight our tourism brand and offerings within the region.

ATTACHMENTS

1. 2016 Spring into Armadale Festival - Marketing Campaign Report

Committee Discussion

It was noted by Committee that the recommendation contained in the attaching Report was a management direction (requiring further work by Officers) and as such, did not align with the Committee Recommendation to ‘receive and note’ the Report. Officers acknowledged this point and agreed the attaching Report be corrected by deleting the recommendation.

RECOMMEND

CS103/12/16

That Council receive and note the attached 2016 “Spring into Armadale” Marketing Campaign report as amended.

**Moved Cr K Busby
MOTION CARRIED**

(7/0)

COUNCILLORS' ITEMS

1 'Pop-Up' Tourist Attraction at the Kelmscott Show (Cr Ruth Butterfield)

Cr Butterfield requested that the matter of a 'pop-up' tourism presence at the next Kelmscott Show be investigated.

2 Building Better Regions Fund - Project Funding Opportunities (Cr Ruth Butterfield)

Cr Butterfield requested that the matter of possible Council projects eligible for funding under the recently revamped Building Better Regions Fund (formerly National Stronger Regions Fund), be investigated.

RECOMMEND

CS104/12/16

That Council refers the following Councillor Items:

- **'pop-up' tourist attraction at the Kelmscott Show; and**
- **Building Better Regions Fund – Project funding opportunities**

to the relevant Directorate for action and/or Report to the appropriate Committee.

Moved Cr R Butterfield

MOTION CARRIED

(7/0)

CHIEF EXECUTIVE OFFICER'S REPORT

Nil

MEETING DECLARED CLOSED AT 7.42PM

CITY STRATEGY COMMITTEE		
SUMMARY OF ATTACHMENTS		
12 DECEMBER 2016		
ATT NO.	SUBJECT	PAGE
1.1 LIST OF ACCOUNTS PAID - NOVEMBER 2016		
1.1.1	Monthly Cheque Listing Report-November 2016	26
1.2 STATEMENT OF FINANCIAL ACTIVITY		
1.2.1	Monthly Financial Report - November 2016	54
3.1 SPRING INTO ARMADALE 2016 - EVALUATION REPORT		
3.1.1	2016 Spring into Armadale Festival - Marketing Campaign Report	76

Accounts Paid and Submitted to City Strategy Committee Held on 12 December 2016

Cheque or EFT No.	Date	Payee	Description	Amount
00027690	01-Nov-16	City of Armadale	Building Application Fee-L13 Coombe Avenue	6,935.00
00027691	02-Nov-16	Bubble Ventures Pty Ltd	Entertainmet-Various Events	880.00
00027692	02-Nov-16	Barnyard Buddies	Entertainmet-Various Events	800.00
00027693	02-Nov-16	MK Dhillon & R Singh	Council Contribution To Crossover	400.00
00027694	02-Nov-16	S Hofmann	Council Contribution To Crossover	400.00
00027695	02-Nov-16	City of Armadale	Interfund Transfer	261.25
00027696	02-Nov-16	C Brezovski	Refund Cancelled Stall Fee-Twilight Market	55.00
00027697	02-Nov-16	City of Armadale	Catering-White Ribbon Day Event	500.00
00027698	02-Nov-16	Della Electrical Services Pty Ltd	Electrical Services	2,018.50
00027699	02-Nov-16	RSPCA	Community Grant-2016/17	1,100.00
00027700	03-Nov-16	City of Armadale	Best Dressed Stall Prizes-Twilight Markets	200.00
00027701	03-Nov-16	City of Armadale	Gift Vouchers-Champion Centre Event	200.00
00027702	04-Nov-16	City of Armadale-Aquatic Centre	Petty Cash Recoup	233.35
00027703	04-Nov-16	City of Armadale-Champion Centre	Petty Cash Recoup	119.15
00027704	07-Nov-16	M G Foxcroft & A L Foxcroft	Refund-Overpayment of Rates	364.25
00027705	07-Nov-16	A Burrridge	Refund-Overpayment of Hall Booking Fee	80.00
00027706	07-Nov-16	J Gardiner	Refund-Overpayment of Hall Booking Fee	625.00
00027707	07-Nov-16	P McCullagh	Donation	150.00
00027708	07-Nov-16	G Wetherill	Donation	150.00
00027709	07-Nov-16	TJ Schuster	Council Contribution To Crossover	400.00
00027710	07-Nov-16	VM Reid	Council Contribution To Crossover	400.00
00027711	07-Nov-16	T Culley	Refund Dog Registration-Sterilized	30.00
00027712	07-Nov-16	S Koens	Refund Dog Registration-Sterilized	30.00
00027713	07-Nov-16	Jesson Flowers	Flowers-Fashion Show Event	1,000.00
00027714	07-Nov-16	City of Armadale	Out of Pocket Expenses-ALGA Road & Transport Conference	150.00
00027715	07-Nov-16	Business Armadale	Refund Overpayment of Hall Booking Fee	80.00
00027716	07-Nov-16	D Leonard	Refund Overpayment of Hall Booking Fee	80.00
00027717	07-Nov-16	L Blackman	Donation	300.00
00027718	10-Nov-16	H E Robertson	Refund-Overpayment of Rates	2,406.19
00027719	10-Nov-16	City of Armadale	Building Application Fee-Harrisdale (East)	157.65
00027720	10-Nov-16	D David	Council Contribution To Crossover	400.00
00027721	10-Nov-16	LF Lesmana	Council Contribution To Crossover	400.00
00027722	10-Nov-16	N Gray	Refund for Lost Item Returned	35.10
00027723	10-Nov-16	LR Smith	Council Contribution To Crossover	400.00
00027724	10-Nov-16	KD & NB Khandrika	Council Contribution To Crossover	400.00
00027725	10-Nov-16	C & SM Millar	Council Contribution To Crossover	400.00
00027726	10-Nov-16	U Ali	Council Contribution To Crossover	400.00

Accounts Paid and Submitted to City Strategy Committee Held on 12 December 2016

Cheque or EFT No.	Date	Payee	Description	Amount
00027727	10-Nov-16	DL Dolphin	Council Contribution To Crossover	400.00
00027728	10-Nov-16	CLAN WA Inc	Staff Training	313.50
00027729	10-Nov-16	LM Stamper	Council Contribution to Crossover	400.00
00027730	11-Nov-16	Construction Training Fund	Levy Collected-October 2016	44,632.90
00027731	11-Nov-16	City of Armadale-Depot	Petty Cash Recoup	451.15
00027732	11-Nov-16	City of Armadale-Community Services	Petty Cash Recoup	284.15
00027733	11-Nov-16	Secure By Design Inc	Computer Software Subscriptions	1,140.00
00027734	15-Nov-16	Water Corporation - Kelmscott Depot	Refund-Invoice Paid Twice Dr 514.01	156.98
00027735	15-Nov-16	N M Danks	Refund Dog Registration-Sterilized	42.50
00027736	15-Nov-16	Bedfordale Bandicoots Playgroup	Community Grant-2016/17	450.00
00027737	15-Nov-16	S Bosich	Council Contribution to Crossover	400.00
00027738	15-Nov-16	City of Armadale	Forfeiture of Council Contribution to Crossover	400.00
00027739	15-Nov-16	K Rayner	Donation	300.00
00027740	15-Nov-16	Poster Passion	Signs	194.48
00027741	15-Nov-16	H Probert	Refund-Cancelled Sports Event	55.00
00027742	15-Nov-16	AS Yong	Council Contribution to Crossover	400.00
00027743	15-Nov-16	Wilson Health Pty Ltd	Staff Training	1,500.00
00027744	17-Nov-16	City of Armadale	Thank You Gifts-Students Program	500.00
00027745	17-Nov-16	Armadale District Bowling Club Inc	Community Grant-2016/17	1,100.00
00027746	17-Nov-16	Y Anderson	Donation	150.00
00027747	17-Nov-16	R H Gibbon	Refund-BSL Levy	426.07
00027748	17-Nov-16	D D Serrano	Refund-BSL Levy	61.65
00027749	17-Nov-16	Meliador (WA) Pty Ltd	Refund-BSL Levy	570.13
00027750	17-Nov-16	Classic Home & Garage Innovations Pty Ltd	Refund-BSL Levy	164.87
00027751	17-Nov-16	EC Longyear	Council Contribution to Crossover	400.00
00027752	17-Nov-16	M Garske	Refund-Overcharged for Swim Club	78.00
00027753	17-Nov-16	C Dudley	Refund-Overcharged for Swim Club	156.00
00027754	17-Nov-16	P Bharadwaj	Refund Dog Registration-Sterilized	30.00
00027755	17-Nov-16	City of Armadale	Various Consumables-Carols By Candlelight & Christmas Par.	800.00
00027756	17-Nov-16	S Vanyai	Entertainment-Hawkers Markets	1,000.00
00027757	17-Nov-16	Educated By Nature	Children's Workshops-School Holiday Program	825.00
00027758	17-Nov-16	The Embroiderers' Guild of WA Inc	Repairs	150.00
00027759	17-Nov-16	Art Presentations	Picture Framing	405.00
00027760	18-Nov-16	City of Armadale-BLSL	Petty Cash Recoup	106.55
00027761	18-Nov-16	Unique International Recoveries LLC	Library Debt Collection Services-October 2016	396.80
00027762	21-Nov-16	City of Armadale	Petty Cash Recoup	685.20
00027763	22-Nov-16	Housing Authority	Refund-Overpayment of Rates	3,542.68

Accounts Paid and Submitted to City Strategy Committee Held on 12 December 2016

Cheque or EFT No.	Date	Payee	Description	Amount
00027764	22-Nov-16	J I Kiely	Refund Dog Registration-Deceased	21.25
00027765	22-Nov-16	City of Armadale	Staff Resignation Gift	120.00
00027766	22-Nov-16	Byford Print	Printing	1,309.00
00027767	22-Nov-16	A Leach	Expenses Reimbursement	100.00
00027768	22-Nov-16	P Vesteeq	Expenses Reimbursement	100.00
00027769	22-Nov-16	Armadale Byford Patios	Refund-Overpayment of Development Application	278.00
00027770	22-Nov-16	KJ & SD Bunter	Council Contribution To Crossover	400.00
00027771	22-Nov-16	RL Lopez	Council Contribution To Crossover	400.00
00027772	22-Nov-16	Othman Hishmen	Entertainment-Twilight Markets	100.00
00027773	22-Nov-16	Sri Lankan Cultural Society Of WA	Entertainment-Twilight Markets	200.00
00027774	22-Nov-16	City of Armadale	Gift Vouchers-Indigenous Advancement Strategy	325.00
00027775	22-Nov-16	Buds Of May	Flowers-2016 Civic Dinner	660.00
00027776	22-Nov-16	C Van Der Lecq	Refund-Cancelled Swimming Lessons	140.00
00027777	22-Nov-16	D Hill	Donation	150.00
00027778	22-Nov-16	K Agostino	Donations	450.00
00027779	22-Nov-16	M French	Refud-Overpayment of Hall Booking Fee	10.00
00027780	24-Nov-16	D J Hancock & K T Hancock	Refund-Overpayment of Rates	644.39
00027781	24-Nov-16	W E Duncan & B A Duncan	Refund-Overpayment of Rates	642.52
00027782	24-Nov-16	Y M Curtis & L A Curtis	Refund-Overpayment of Rates	334.83
00027783	24-Nov-16	C L McAuliffe & S A McAuliffe	Refund-Overpayment of Rates	384.15
00027784	24-Nov-16	N G Giles & J A Giles	Refund-Overpayment of Rates	793.08
00027785	24-Nov-16	S G Gokavi & R B Gokavi	Refund-Overpayment of Rates	829.90
00027786	24-Nov-16	R L Johnston & C G Johnston	Refund-Overpayment of Rates	339.77
00027787	24-Nov-16	M J Le Guier	Refund-Overpayment of Rates	706.34
00027788	24-Nov-16	Dept of Environment Regulation	Clearing Permit Application-Chevin Road	50.00
00027789	24-Nov-16	G Stewart	Council Contribution To Crossover	400.00
00027790	24-Nov-16	R Tith	Council Contribution To Crossover	400.00
00027791	24-Nov-16	WA Police	Road Closure Application-Carols By Candlelight	80.60
00027792	24-Nov-16	R G Pillay & V T Pillay	Refund-Overpayment of Rates	369.42
00027793	24-Nov-16	Integrated Exercise Rehabilitation	Seniors Event	150.00
00027794	25-Nov-16	City of Armadale-BLSL	Petty Cash Recoup	96.65
00027795	25-Nov-16	K H SHIER & J P MILLER	Refund-Overpayment of Rates	868.61
00027796	25-Nov-16	WA Association for Mental Health	Staff Training	375.00
00027797	25-Nov-16	Dept of Transport Att: Filet Licens	Motor Vehicle Registration	44.25
00027798	28-Nov-16	C L Claxton	Refund-Cancelled Buidling Application Fee	278.00
00027799	28-Nov-16	GF Hill	Council Contribution To Crossover	400.00
00027800	28-Nov-16	M Fowler	Entertainment-Hawkers Market	200.00

Accounts Paid and Submitted to City Strategy Committee Held on 12 December 2016

Cheque or EFT No.	Date	Payee	Description	Amount
00027801	28-Nov-16	P Singh	Council Contribution To Crossover	400.00
00027802	28-Nov-16	GR Hunt & JA Hunt	Council Contribution To Crossover	400.00
00027803	28-Nov-16	S H O'Reilly	Council Contribution To Crossover	400.00
00027804	28-Nov-16	IS Wallace & JY Wallace	Council Contribution To Crossover	400.00
00027805	28-Nov-16	KM Co & SB Yee	Council Contribution To Crossover	400.00
00027806	28-Nov-16	CM McCann	Council Contribution To Crossover	400.00
00027807	28-Nov-16	T Wu & C Chen	Council Contribution To Crossover	400.00
00027808	28-Nov-16	TN White	Council Contribution To Crossover	400.00
00027809	28-Nov-16	JH Lau & SH Wong	Council Contribution To Crossover	400.00
00027810	28-Nov-16	S Sharma	Council Contribution To Crossover	400.00
00027811	28-Nov-16	S Burke	Council Contribution To Crossover	400.00
00027812	28-Nov-16	City of Armadale	Various Items-LGS Directory Launch	59.90
00027813	29-Nov-16	Mun Mo Malcolm Mah	Entertainment-Hawkers Market	750.00
00027814	29-Nov-16	Reilly Craig	Entertainment-Music In The Mall	500.00
00027815	29-Nov-16	City of Armadale	Christmas Decorations-CEO's Directorate	200.00
00027816	29-Nov-16	City of Armadale	Interfund Transfer-Sale of L9 Banken Court	308,874.83
DIRECT DEBIT 01-Nov-16		Westpac Banking Corporation	Bank Charges-Activity Fee	3,182.48
DIRECT DEBIT 01-Nov-16		Westpac Banking Corporation	Bank Charges-Merchant Fee	3,170.10
DIRECT DEBIT 03-Nov-16		Westpac Banking Corporation	Funds Transfer to Corporate Credit Card	1,000.00
DIRECT DEBIT 03-Nov-16		Ticketek	Ticket Sales-W/E 03.11.16	1,116.45
DIRECT DEBIT 04-Nov-16		Ticketmaster	Ticket Sales-W/E 02.11.16	1,659.05
DIRECT DEBIT 04-Nov-16		Westpac Banking Corporation	Dishonoured Rates Direct Debit	140.00
DIRECT DEBIT 07-Nov-16		IINet Limited	Internet Usage 01.11.16-01.12.16	434.33
DIRECT DEBIT 07-Nov-16		Dept of Attorney General	Lodgement Fee-Unpaid Infringement	58.00
DIRECT DEBIT 08-Nov-16		Westpac Banking Corporation	Corporate Credit Card Statement-October 2016	4,781.12
DIRECT DEBIT 09-Nov-16		Ticketek	Ticket Sales-W/E 10.11.16	878.10
DIRECT DEBIT 10-Nov-16		Dept of Attorney General	Lodgement Fee-176 Unpaid Infringements	10,208.00
DIRECT DEBIT 11-Nov-16		Ticketmaster	Ticket Sales-W/E 07.11.16	575.50
DIRECT DEBIT 14-Nov-16		Ticketmaster	Ticket Sales-W/E 12.10.16	637.95
DIRECT DEBIT 14-Nov-16		Ticketek	Ticket Sales-W/E 17.11.16	286.10
DIRECT DEBIT 15-Nov-16		SGFleet	Lease of Service Vehicle	298.67
DIRECT DEBIT 15-Nov-16		Toyota Finance Australia Ltd	Operating Lease Toyota Tarago & Hilux	1,002.93
DIRECT DEBIT 18-Nov-16		Ticketmaster	Ticket Sales-W/E 16.11.16	823.60
DIRECT DEBIT 22-Nov-16		Westpac Banking Corporation	Dishonoured Cheque-Armaguard Incorrectly Keyed	0.70
DIRECT DEBIT 23-Nov-16		National Australia Bank	Surplus Funds Invested	2,000,000.00
DIRECT DEBIT 24-Nov-16		Ticketek	Ticket Sales-W/E 24.11.16	660.70
DIRECT DEBIT 25-Nov-16		Ticketmaster	Ticket Sales-W/E 25.11.16	1,235.40

Accounts Paid and Submitted to City Strategy Committee Held on 12 December 2016

Cheque or EFT No.	Date	Payee	Description	Amount
1975.1056-01	04-Nov-16	Allwest Windscreens & Tinting	Parts-P1817	1,085.04
1975.11-01	04-Nov-16	Absolute Asphalt Pty Ltd	Asphalt Layed	7,914.05
1975.1106-01	04-Nov-16	West Coast Shade Pty Ltd	Repair Shade Sails-Various Locations	792.00
1975.1229-01	04-Nov-16	Print Smart Online Pty Ltd	Printing	15,177.65
1975.127-01	04-Nov-16	Beaver Tree Services Aust Pty Ltd	Treelopping	42,346.57
1975.129-01	04-Nov-16	Benara Nurseries	Gardening Products	880.00
1975.13-01	04-Nov-16	Accidental First Aid Supplies	First Aid Supplies	167.71
1975.1302-01	04-Nov-16	WH Location Services Pty Ltd	Locate Utility Services-Various Locations	13,245.38
1975.1314-01	04-Nov-16	Excel Traffic Data	Traffic Data Collection-Armadale/Eighth Road's	811.80
1975.1347-01	04-Nov-16	Byford Glass	Repair Broken Windows-Various Locations	3,295.00
1975.1348-01	04-Nov-16	Museums Australia Inc (WA)	Staff Training	349.00
1975.1352-01	04-Nov-16	Action 4WD	Safety Equipment	180.00
1975.1385-01	04-Nov-16	Armadale Kelmiscott Refrigeration	Degas Fridges/Freezers-Landfill Site	552.50
1975.1404-01	04-Nov-16	The Manse Restaurant	Catering	97.00
1975.1446-01	04-Nov-16	Old MacDonalds Travelling Farm	Entertainment-Champion Centre Event	550.00
1975.1453-01	04-Nov-16	ATI-Mirage Pty Ltd	Staff Training	297.50
1975.1469-01	04-Nov-16	Urban Development Inst of Australia	Staff Training	720.00
1975.1482-01	04-Nov-16	Fuji Xerox Australia Co Ltd	Stationery	424.16
1975.1519-01	04-Nov-16	Kerb-Fix	Construction of Concrete Crossovers	950.40
1975.155-01	04-Nov-16	BP Australia Pty Ltd	Fuel & Oils	3,922.69
1975.1575-01	04-Nov-16	Western Power Networks	Street Light-21 Church Street	2,290.00
1975.161-01	04-Nov-16	Browns Sweeping	Street Sweeping	8,768.00
1975.1621-01	04-Nov-16	Dean Kalia Pty Ltd	Concrete Services	7,534.42
1975.165-01	04-Nov-16	Building Commission	Levy Collected-October 2016	44,790.66
1975.1790-01	04-Nov-16	H S Brooking	Painting Services-Old Administration Building	3,150.00
1975.1806-01	04-Nov-16	Level & Detail Surveys	Surveys-Various Locations	2,547.20
1975.1890-01	04-Nov-16	ID Consulting Pty Ltd	Consultancy Services	53,900.00
1975.193-01	04-Nov-16	Challenge Batteries WA	Parts	237.60
1975.2006-01	04-Nov-16	Pavement Analysis Pty Ltd	Pavement Investigation-Forrest Road	3,630.00
1975.2084-01	04-Nov-16	Creative Driveways & Fencing	Hire of Equipment	2,640.00
1975.2134-01	04-Nov-16	Valvoline (Australia)	Fuel & Oils	2,305.61
1975.2235-01	04-Nov-16	Nashtec Auto Electrics	Repairs-P545	495.00
1975.231-01	04-Nov-16	Coates Hire	Hire of Equipment	20,956.68
1975.2329-01	04-Nov-16	Ricoh Australia Pty Ltd	Photocopier Usage	11,924.54
1975.2339-01	04-Nov-16	PFD Food Services	Refreshments	463.05
1975.2427-01	04-Nov-16	Ross's Milk Supply	Refreshments	396.75
1975.2461-01	04-Nov-16	Kwik Kopy Printing Centre	Printing	435.60

Accounts Paid and Submitted to City Strategy Committee Held on 12 December 2016

Cheque or EFT No.	Date	Payee	Description	Amount
1975.2481-01	04-Nov-16	Child Australia	Staff Training	295.00
1975.2553-01	04-Nov-16	Natural Area Management & Services	Forrestdale Business Park Drainage Swales	19,751.16
1975.257-01	04-Nov-16	Comerstone Legal	Legal Advice	1,798.08
1975.2573-01	04-Nov-16	IFAP	Staff Training	750.00
1975.2636-01	04-Nov-16	Armada Region Business Assoc	Business Excellence Gala Awards	240.00
1975.2695-01	04-Nov-16	Archival Survival	Stationery	1,101.23
1975.2697-01	04-Nov-16	Aussie Earthworks Pty Ltd	Hire of Equipment	55,741.50
1975.2734-01	04-Nov-16	Superior Pak Pty Ltd	Parts-P598	389.50
1975.2763-01	04-Nov-16	Vinci Gravel Supplies Pty Ltd	Gravel	5,079.69
1975.277-01	04-Nov-16	Landgate	Title Searches	323.05
1975.295-01	04-Nov-16	Down Under Signs Pty Ltd	Signs	44.00
1975.3036-01	04-Nov-16	iSentia Pty Ltd	Media Monitoring-September 2016	1,259.50
1975.3051-01	04-Nov-16	CANCELLED	CANCELLED	0.00
1975.3059-01	04-Nov-16	Print And Design Online Pty Ltd	Printing	1,640.00
1975.3082-01	04-Nov-16	Sonic HealthPlus	Preplacement Medicals	297.00
1975.3114-01	04-Nov-16	Blackrooke Advertising & Design	Advertising	503.25
1975.3157-01	04-Nov-16	Bowden Tree Consultancy	Consultancy Services	781.00
1975.3180-01	04-Nov-16	Cevol Industries Pty Ltd	Hire of Pallet Cages	294.92
1975.3250-01	04-Nov-16	P W Sanders	Telephone Reimbursement	49.95
1975.33-01	04-Nov-16	ALS Library Services Pty Ltd	Library Resources	2,036.78
1975.3412-01	04-Nov-16	AAM Pty Ltd	Consultancy Services	1,325.50
1975.3416-01	04-Nov-16	N Kegie	Expenses Reimbursements	161.50
1975.3463-01	04-Nov-16	Big W	Photos-Volunteer Services	756.50
1975.357-01	04-Nov-16	Nosh Catering	Catering-October 2016	507.65
1975.3594-01	04-Nov-16	Australian Red Cross	Staff Training	1,588.00
1975.3619-01	04-Nov-16	All Earth Waste Collection	Greenwaste Collections-Various Locations	12,874.46
1975.3693-01	04-Nov-16	Acurix Networks Pty Ltd	Public WiFi Access-Q/E 31.12.16	11,977.35
1975.372-01	04-Nov-16	Harvey Norman Computer Superstore	Computer Equipment	274.00
1975.374-01	04-Nov-16	Hays Personnel Services (Aust) Pty Ltd	Hire of Temporary Staff	5,097.79
1975.3777-01	04-Nov-16	Reva Commercial Pty Ltd	Remove Gutters-Roleystone Hall	2,640.00
1975.3929-01	04-Nov-16	Marketforce	Advertising	8,906.40
1975.4105-01	04-Nov-16	Timber Insight Pty Ltd	Staff Training	600.00
1975.4183-01	04-Nov-16	Wilson Security Services	Security Services	915.86
1975.4199-01	04-Nov-16	N M John	Expenses Reimbursement	78.99
1975.4235-01	04-Nov-16	AusQ Training	Staff Training	579.00
1975.4279-01	04-Nov-16	Thomson Reuters (Professional) Aust Ltd	Recruitment Licence Fee	13,659.70
1975.4305-01	04-Nov-16	PRF Industries Pty Ltd	Electrical Services	550.00

Accounts Paid and Submitted to City Strategy Committee Held on 12 December 2016

Cheque or EFT No.	Date	Payee	Description	Amount
1975.4322-01	04-Nov-16	Clarity Communications	Social Media Reivew Report	1,584.00
1975.4378-01	04-Nov-16	Avantgarde Technologies Pty Ltd	ICT Project Support	9,873.60
1975.4552-01	04-Nov-16	Workzone Pty Ltd	Painting Services-Piara Waters Pavilion	15,840.00
1975.456-01	04-Nov-16	Liquor Barons Armadale	Refreshments	25.20
1975.4602-01	04-Nov-16	Garelle Enterprises	Remove Bees-32 Tomah Road	93.00
1975.463-01	04-Nov-16	Lo-Go Appointments	Hire of Temporary Staff	5,703.01
1975.4665-01	04-Nov-16	South City Lawns	Weed Control	492.57
1975.4715-01	04-Nov-16	R J Indich	Cultural Facilitator-After School Program	250.00
1975.4782-01	04-Nov-16	Harmony At Home	Family History & Research Program	2,200.00
1975.4896-01	04-Nov-16	Peel Engraving & Rubber Stamp Co	Stationery	268.40
1975.4902-01	04-Nov-16	Paramount Electrical Services	Electrical Services	2,255.85
1975.4918-01	04-Nov-16	West Power Group Pty Ltd	Parts-Admin Generator	3,080.00
1975.4938-01	04-Nov-16	Mills Corporation Pty Ltd T/As Mills Resources	Hire of Temporary Staff	926.40
1975.5002-01	04-Nov-16	Around About Fencing & Gates	Parts	75.00
1975.510-01	04-Nov-16	P R Nardelli	Telephone Reimbursement	41.95
1975.551-01	04-Nov-16	Brownes Foods Operation Pty Ltd	Refreshments	41.67
1975.552-01	04-Nov-16	Wizard Pharmacy KelmScott Stargate	Newspapers	84.10
1975.559-01	04-Nov-16	Planning Institute of Aust (WA Division)	Staff Training	85.00
1975.577-01	04-Nov-16	Rabor Smash Repairs	Insurance Excess-P1880	500.00
1975.61-01	04-Nov-16	Armadale Lock & Key Service	Padlocks/Keys Cut	1,477.50
1975.631-01	04-Nov-16	Slater-Gartrell Sports	Sporting Equipment	312.40
1975.645-01	04-Nov-16	Sportsworld of WA	Protective Clothing	2,404.05
1975.655-01	04-Nov-16	Cr James Stewart	Councillors Allowances	43.95
1975.662-01	04-Nov-16	Supa Pest & Weed Control	Weed & Pest Control	814.00
1975.667-01	04-Nov-16	Target Towing Service	Towing Charges	660.00
1975.669-01	04-Nov-16	Telstra	Telephone Charges	206.79
1975.744-01	04-Nov-16	Water Corporation	Water Charges	33,329.17
1975.759-01	04-Nov-16	Synergy Energy	Electricity Charges	2,701.60
1975.780-01	04-Nov-16	Work Clobber	Protective Clothing	252.00
1976.1197-01	09-Nov-16	Westzone Enterprises Pty Ltd	Armadale Library Rent-November 2016	34,356.94
1976.1402-01	09-Nov-16	S A D'Souza	Expenses Reimbursement	57.98
1976.1404-01	09-Nov-16	The Manse Restaurant	Catering	2,496.90
1976.1422-01	09-Nov-16	Onhold Magic Pty Ltd	Music on Hold-November 2016	92.26
1976.1433-01	09-Nov-16	Serpentine Spring Water	Refreshments	184.00
1976.147-01	09-Nov-16	BOC Gases Australia Limited	Gas & Cylinder Rental	76.85
1976.1482-01	09-Nov-16	Fuji Xerox Australia Co Ltd	Stationery	346.78
1976.1488-01	09-Nov-16	Institute of Public Works Aust(WA Division)	Staff Training	3,900.00

Accounts Paid and Submitted to City Strategy Committee Held on 12 December 2016

Cheque or EFT No.	Date	Payee	Description	Amount
1976.1514-01	09-Nov-16	PR & KA West	Maintenance Works-Variou Locations	7,994.80
1976.155-01	09-Nov-16	BP Australia Pty Ltd	Fuel & Oils	15,402.60
1976.1567-01	09-Nov-16	Vanessa Australia	Souvenir-AVC	887.30
1976.1621-01	09-Nov-16	Dean Kalia Pty Ltd	Concrete Services	8,039.32
1976.1790-01	09-Nov-16	H S Brooking	Painting Services-Variou Locations	6,390.00
1976.1806-01	09-Nov-16	Level & Detail Surveys	Surveys-Variou Locations	7,119.00
1976.1887-01	09-Nov-16	Colas WA	Bitumen Emulsion	20,301.62
1976.199-01	09-Nov-16	Charter Plumbing & Gas	Plumbing Services	155.30
1976.2210-01	09-Nov-16	Waterlog Australia Pty Ltd	Hire of Equipment	2,508.00
1976.232-01	09-Nov-16	Coca-Cola Amatil (Aust) Pty Ltd	Refreshments	62.70
1976.2337-01	09-Nov-16	F J Grieves	Expenses Reimbursements	200.32
1976.2339-01	09-Nov-16	PFD Food Services	Refreshments	1,132.30
1976.2437-01	09-Nov-16	Drainflow Services Pty Ltd	High Pressure Cleaning-Variou Locations	18,700.00
1976.2477-01	09-Nov-16	WA Catering Services Pty Ltd	Catering-October 2016	720.00
1976.2489-01	09-Nov-16	Sign A Rama-Osborne Park	Signs	9,006.78
1976.2494-01	09-Nov-16	D B Heliams	Expenses Reimbursements	475.45
1976.25-01	09-Nov-16	Alinta Gas	Gas Charges	908.90
1976.2697-01	09-Nov-16	Aussie Earthworks Pty Ltd	Hire of Equipment	35,191.50
1976.2726-01	09-Nov-16	ABCO Products	Cleaning Materials	35.02
1976.276-01	09-Nov-16	Dept of Parks & Wildlife- Operations	Park Passes	1,287.00
1976.2779-01	09-Nov-16	Award Contracting	Surveys-Armadale Arena	2,882.00
1976.295-01	09-Nov-16	Down Under Signs Pty Ltd	Signs	1,317.59
1976.3034-01	09-Nov-16	Specialty Timber Flooring WA	Repair Flooring-Roleystone Hall	10,516.00
1976.3195-01	09-Nov-16	Greenfield Gardening	Garden Maintenance	3,327.50
1976.3276-01	09-Nov-16	Andrea Burns Communications Pty Ltd	MC-Fashion Show	880.00
1976.3335-01	09-Nov-16	Forrestdale Junior Football Club	KidSport Funding	144.00
1976.3349-01	09-Nov-16	NOVA Entertainment (Perth) Pty Ltd	Advertising	2,543.40
1976.3460-01	09-Nov-16	Kelmscott Scout Group	KidSport Funding	600.00
1976.3463-01	09-Nov-16	Big W	Photos-Volunteers	44.50
1976.3560-01	09-Nov-16	Roleystone Teeball & Baseball Club	KidSport Funding	1,130.00
1976.3574-01	09-Nov-16	Willandra Little Athletics Club	KidSport Funding	640.00
1976.3596-01	09-Nov-16	Spartans Little Athletics Club Inc	KidSport Funding	900.00
1976.3675-01	09-Nov-16	Carlisle Events Hire Pty Ltd	Hire of Equipment	3,052.50
1976.3718-01	09-Nov-16	Brilliance Cleaning Services	Cleaning Services-Roleystone Hall	1,023.00
1976.3730-01	09-Nov-16	Westfield Scout Group	KidSport Funding	1,800.00
1976.374-01	09-Nov-16	Hays Personnel Services (Aust) Pty Ltd	Hire of Temporary Staff	1,623.01
1976.3856-01	09-Nov-16	Mother Earth Gardening & Landscaping	Garden Maintenance	423.50

Accounts Paid and Submitted to City Strategy Committee Held on 12 December 2016

Cheque or EFT No.	Date	Payee	Description	Amount
1976.3870-01	09-Nov-16	Huntingdale Tee-Ball Club	KidSport Funding	130.00
1976.3929-01	09-Nov-16	Marketforce	Advertising	770.00
1976.3968-01	09-Nov-16	Thornlie Cricket Club	KidSport Funding	200.00
1976.3995-01	09-Nov-16	South Lake Dolphins Swimming Club	KidSport Funding	200.00
1976.4170-01	09-Nov-16	Peel Metropolitan Horse & Play Club Inc	KidSport Funding	400.00
1976.4286-01	09-Nov-16	Olympians Little Athletics Club	KidSport Funding	390.00
1976.4313-01	09-Nov-16	Harley Dykstra Pty Ltd	Clifton Street Structure Plan	4,825.01
1976.4369-01	09-Nov-16	J M Cope	Expenses Reimbursements	387.20
1976.4374-01	09-Nov-16	Aspect Security Pty Ltd	Administration Video Surveillance Upgrade	6,102.80
1976.440-01	09-Nov-16	Kott Gunning Lawyers	Legal Advice	711.73
1976.4413-01	09-Nov-16	Two Cent Professionals Band	Entertainment-Twilight Markets	1,500.00
1976.4425-01	09-Nov-16	Forrestdale Little Athletics Club	KidSport Funding	330.00
1976.4447-01	09-Nov-16	Beckenham Angels Soccer Club	KidSport Funding	200.00
1976.448-01	09-Nov-16	Lawn Doctor	Gardening Products	1,485.00
1976.463-01	09-Nov-16	Lo-Go Appointments	Hire of Temporary Staff	4,512.66
1976.4649-01	09-Nov-16	Armadale Gymnastics Club Inc	KidSport Funding	424.00
1976.4690-01	09-Nov-16	Effective Legal Pty Ltd	Legal Advice-Better Business Review	23,324.00
1976.4728-01	09-Nov-16	Piripono Inc	KidSport Funding	250.00
1976.4736-01	09-Nov-16	Axia Corporate Property	Keimscott Library Rent-November 2016	18,163.53
1976.4858-01	09-Nov-16	DFP Recruitment Services	Hire of Temporary Staff	1,499.19
1976.49-01	09-Nov-16	Araluen Golf Resort Pty Ltd	Armadale Golf Day	13,848.90
1976.4963-01	09-Nov-16	Perth Region NRM Inc	Staff Training	105.00
1976.5017-01	09-Nov-16	K H Chee	Recycle Workshop-Armadale Library	355.00
1976.5019-01	09-Nov-16	Thornlie Hawk Mens Softball Club	KidSport Funding	400.00
1976.518-01	09-Nov-16	Better Health Nutrition & Fitness	Staff Training	840.00
1976.518-01	09-Nov-16	Nicholls CE & Son Pty Ltd	Swimmin Pool Inspections-October 2016	6,864.00
1976.551-01	09-Nov-16	Brownes Foods Operation Pty Ltd	Refreshments	97.08
1976.602-01	09-Nov-16	Royal Lifesaving Society	Staff Training	1,455.00
1976.636-01	09-Nov-16	Rivers Regional Council	Council Contribution 2016/17	200,820.40
1976.728-01	09-Nov-16	WA Hino Sales & Service	1 x Hino 500 Series	128,037.90
1976.74-01	09-Nov-16	Armadale Keimscott Self Storage	Storage Unit Rental	3,960.00
1976.744-01	09-Nov-16	Water Corporation	Water Charges	18,856.17
1976.759-01	09-Nov-16	Synergy Energy	Electricity Charges	9,830.10
1976.85-01	09-Nov-16	Aslab Pty Ltd	Asphalt Testing-Nicholson Road	822.82
1976.886-01	09-Nov-16	Exteria Street & Park Outfitters	Park Furniture-Variou Locations	14,163.60
1976.912-01	09-Nov-16	St John Ambulance WA Pty Ltd	Staff Training	285.18
1977.3619-01	09-Nov-16	All Earth Waste Collection	Greenwaste Collections-Variou Locations	6,141.62

Accounts Paid and Submitted to City Strategy Committee Held on 12 December 2016

Cheque or EFT No.	Date	Payee	Description	Amount
1978.109-01	11-Nov-16	Australian Metal Workers Union	Payroll Deductions	84.10
1978.112-01	11-Nov-16	Australian Services Union	Payroll Deductions	858.22
1978.206-01	11-Nov-16	Child Support Agency	Payroll Deductions	1,574.12
1978.214-01	11-Nov-16	City of Armadale-Social Club	Payroll Deductions	300.00
1978.217-01	11-Nov-16	City of Gosnells	Payroll Deductions	285.00
1978.2335-01	11-Nov-16	Health Insurance Fund of WA	Payroll Deductions	70.10
1978.4156-01	11-Nov-16	Quick Super	Payroll Deductions	193,780.58
1978.453-01	11-Nov-16	LGRCEU	Payroll Deductions	522.82
1978.622-01	11-Nov-16	Shire of Mundaring	Payroll Deductions	85.00
1978.623-01	11-Nov-16	Shire of Serpentine-Jarrahdale	Payroll Deductions	230.89
1979.113-01	11-Nov-16	Australian Taxation Office	Payroll Deductions	293,875.67
1979.1235-01	11-Nov-16	Repco Auto Parts	Parts	186.85
1979.127-01	11-Nov-16	Beaver Tree Services Aust Pty Ltd	Treelooping	2,614.61
1979.129-01	11-Nov-16	Benara Nurseries	Gardening Products	1,281.50
1979.1359-01	11-Nov-16	Elite Pool Covers Pty Ltd	Repairs-Aquatic Centre	2,408.00
1979.1488-01	11-Nov-16	Institute of Public Works Aust(WA Division)	Staff Training	475.00
1979.1519-01	11-Nov-16	Kerb-Fix	Construction of Concrete Crossovers	1,900.80
1979.1547-01	11-Nov-16	G J Squires	Maintenance Works-Variou Locations	6,930.00
1979.1593-01	11-Nov-16	CANCELLED	CANCELLED	0.00
1979.1607-01	11-Nov-16	Taborda Contracting Pty Ltd	Hire of Traffic Controllers	40,386.60
1979.161-01	11-Nov-16	Browns Sweeping	Street Sweeping	11,668.00
1979.1621-01	11-Nov-16	Dean Kalia Pty Ltd	Concrete Services	4,471.33
1979.172-01	11-Nov-16	Byford Bobcats	Hire of Bobcat	514.80
1979.1743-01	11-Nov-16	Thurlby Herb Farm	Souvenirs-AVC	244.48
1979.1820-01	11-Nov-16	RCR Energy Service Pty Ltd	Service Boilers-Aquatic Centre	1,125.19
1979.1841-01	11-Nov-16	Kleenit Pty Ltd	Remove Graffiti-Variou Locations	973.50
1979.193-01	11-Nov-16	Challenge Batteries WA	Parts	343.20
1979.1977-01	11-Nov-16	SERCUL Inc	Weed Control-Variou Locations	9,900.00
1979.199-01	11-Nov-16	Charter Plumbing & Gas	Plumbing Services	259.40
1979.2103-01	11-Nov-16	Flexi Staff Pty Ltd	Hire of Temporary Staff	3,381.29
1979.2166-01	11-Nov-16	Chubb Fire & Security Pty Ltd	Fire Service System-Visitors Centre	20,821.35
1979.2188-01	11-Nov-16	Domus Nursery	Gardening Products	5,693.60
1979.2235-01	11-Nov-16	Nashtec Auto Electrics	Repairs-P569	1,612.05
1979.2427-01	11-Nov-16	Ross's Milk Supply	Refreshments	133.60
1979.2461-01	11-Nov-16	Kwik Kopy Printing Centre	Printing	653.40
1979.25-01	11-Nov-16	Alinta Gas	Gas Charges	7,695.95
1979.2528-01	11-Nov-16	Stockland WA Development Pty Ltd	Refund-Overpayment of Rates	88.85

Accounts Paid and Submitted to City Strategy Committee Held on 12 December 2016

Cheque or EFT No.	Date	Payee	Description	Amount
1979.2552-01	11-Nov-16	Programmed Maintenance Services Ltd	Garden Maintenance	11,743.24
1979.2619-01	11-Nov-16	Cr Laurence Sargeson	Councillors Allowances	213.20
1979.2697-01	11-Nov-16	Aussie Earthworks Pty Ltd	Hire of Equipment	1,598.00
1979.277-01	11-Nov-16	Landgate	Title Searches	121.65
1979.2831-01	11-Nov-16	Apple Pty Ltd	Computer Equipment	90.20
1979.2856-01	11-Nov-16	Natuva Pty Ltd	First Aid Supplies	962.50
1979.29-01	11-Nov-16	Allmark & Associates Pty Ltd	Stationery	695.75
1979.295-01	11-Nov-16	Down Under Signs Pty Ltd	Signs	116.60
1979.3059-01	11-Nov-16	Print And Design Online Pty Ltd	Printing	3,681.00
1979.3173-01	11-Nov-16	Tim Eva's Nursery	Gardening Products	17,963.00
1979.3178-01	11-Nov-16	Heritage Advice Australia	Heritage Assessment-Wungong River	2,711.50
1979.3195-01	11-Nov-16	Greenfield Gardening	Garden Maintenance	1,784.75
1979.3266-01	11-Nov-16	Artref Pty Ltd	Stationery	436.70
1979.33-01	11-Nov-16	ALS Library Services Pty Ltd	Library Resources	93.90
1979.331-01	11-Nov-16	Forestvale Trees Pty Ltd	Gardening Products	638.00
1979.3664-01	11-Nov-16	Wild Honey	Remove Bees-43 Lefroy Way	250.00
1979.3716-01	11-Nov-16	CANCELLED	CANCELLED	0.00
1979.376-01	11-Nov-16	Dept of Health	Pest Management Technicians Licence	170.00
1979.4176-01	11-Nov-16	Evans Security Service	Security Services	330.00
1979.4183-01	11-Nov-16	Wilson Security Services	Security Services	686.90
1979.4258-01	11-Nov-16	Hender Lee Electrical Contractors Pty Ltd	Electrical Services	14,695.56
1979.4319-01	11-Nov-16	Datacom Systems (WA) Pty Ltd	Computer Equipment	1,718.15
1979.4374-01	11-Nov-16	Aspect Security Pty Ltd	Video Surveillance Display Upgrade	2,505.80
1979.4398-01	11-Nov-16	Boogie Babes	Various Workshops-Armadale Library	400.00
1979.4418-01	11-Nov-16	Prestige Property Maintenance Pty Ltd	Garden Maintenance	4,631.00
1979.4421-01	11-Nov-16	Mettam Legal	Legal Advice	983.37
1979.4526-01	11-Nov-16	Professional Information Consultants	Legal Advice	143.00
1979.4564-01	11-Nov-16	LTC Asphalt Pty Ltd	Asphalt Layed	13,285.80
1979.4571-01	11-Nov-16	JDS Building & Maintenance Services	Ceiling Works-Roleystone Theatre	5,115.00
1979.463-01	11-Nov-16	Lo-Go Appointments	Hire of Temporary Staff	6,016.31
1979.4670-01	11-Nov-16	Talis Consultants	Groundwater Works-Landfill Site	33,402.82
1979.472-01	11-Nov-16	Main Roads WA	Linemarking-Various Locations	7,254.42
1979.4858-01	11-Nov-16	DFP Recruitment Services	Hire of Temporary Staff	2,177.29
1979.4896-01	11-Nov-16	Peel Engraving & Rubber Stamp Co	Stationery	101.20
1979.4902-01	11-Nov-16	Paramount Electrical Services	Electrical Services	1,983.40
1979.4905-01	11-Nov-16	Stress Free Dressing	Entertainment-Library Event	200.00
1979.4936-01	11-Nov-16	Pinjarra Crane & Access Hire Pty Ltd	Hire of Equipment	1,320.00

Accounts Paid and Submitted to City Strategy Committee Held on 12 December 2016

Cheque or EFT No.	Date	Payee	Description	Amount
1979.5011-01	11-Nov-16	Aussie Recycling Services Pty Ltd	Hire of Equipment	2,720.00
1979.5030-01	11-Nov-16	C J Vince	Refund-Overpayment of Rates	1,909.64
1979.512-01	11-Nov-16	National Collections	Debt Collection Services-October 2016	8.80
1979.532-01	11-Nov-16	P & G Body Builders Pty Ltd	Canopy Box Trailer	11,264.00
1979.587-01	11-Nov-16	Ambius	Hire of Plants-November 2016	1,872.41
1979.63-01	11-Nov-16	Armada Newsagency	Newspapers	397.43
1979.631-01	11-Nov-16	Slater-Gartrell Sports	Synthetic Turf-Cross Park	4,719.00
1979.662-01	11-Nov-16	Supa Pest & Weed Control	Weed & Pest Control	23,796.41
1979.667-01	11-Nov-16	Target Towing Service	Towing Charges	330.00
1979.682-01	11-Nov-16	Examiner Newspapers (WA)	Advertising	770.00
1979.690-01	11-Nov-16	Toll Fast	Courier Services	56.53
1979.712-01	11-Nov-16	Landgate - Perth	GRV Valuations	1,518.76
1979.731-01	11-Nov-16	WALGA	Staff Training	285.00
1979.74-01	11-Nov-16	Armada Kelmiscott Self Storage	Storage Unit Rental	450.00
1979.744-01	11-Nov-16	Water Corporation	Water Charges	2,095.13
1979.759-01	11-Nov-16	Synergy Energy	Electricity Charges	4,949.35
1979.780-01	11-Nov-16	Work Clobber	Protective Clothing	246.50
1979.805-01	11-Nov-16	CANCELLED	CANCELLED	0.00
1979.818-01	11-Nov-16	Parks & Leisure Australia	Staff Training	594.00
1979.85-01	11-Nov-16	Aslab Pty Ltd	Asphalt Testing	520.33
1979.934-01	11-Nov-16	Kleenheat Gas Pty Ltd	Gas & Cylinder Rental	96.62
1980.4156-01	14-Nov-16	Quick Super	Payroll Deductions	739.52
1981.1050-01	16-Nov-16	Syba Signs Pty Ltd	Library Resources	126.50
1981.107-01	16-Nov-16	Australian Institute of Management (AIM)	Staff Training	540.00
1981.1209-01	16-Nov-16	Instant Waste Management	Pump Out Grease Traps-Various Locations	477.84
1981.1302-01	16-Nov-16	WH Location Services Pty Ltd	Locate Utility Services-Kulbardi Way	940.50
1981.147-01	16-Nov-16	BOC Gases Australia Limited	Gas & Cylinder Rental	120.89
1981.1593-01	16-Nov-16	Capital Finance Australia Limited	Gym Equipment Lease	20,020.51
1981.1621-01	16-Nov-16	Dean Kalia Pty Ltd	Concrete Services	770.00
1981.1841-01	16-Nov-16	Kleenit Pty Ltd	Remove Graffiti-Various Locations	335.50
1981.222-01	16-Nov-16	Civica Pty Ltd	Upgrade/Installation-Authority 6.11	19,380.35
1981.2391-01	16-Nov-16	Lightforce Assets Pty Ltd	Guardrail-Stoker Road	7,447.00
1981.2427-01	16-Nov-16	Ross's Milk Supply	Refreshments	270.50
1981.2437-01	16-Nov-16	Drainflow Services Pty Ltd	High Pressure Cleaning-Various Locations	2,310.00
1981.2477-01	16-Nov-16	WA Catering Services Pty Ltd	Catering-October 2016	720.00
1981.248-01	16-Nov-16	CD's Confectionery Wholesalers	Refreshments	504.85
1981.2481-01	16-Nov-16	Child Australia	Staff Training	295.00

Accounts Paid and Submitted to City Strategy Committee Held on 12 December 2016

Cheque or EFT No.	Date	Payee	Description	Amount
1981.2734-01	16-Nov-16	Superior Pak Pty Ltd	Parts	450.20
1981.3045-01	16-Nov-16	HAS Earthmoving	Hire of Equipment	128,691.23
1981.3154-01	16-Nov-16	Fratelle Group Pty Ltd	Consultancy Services	9,306.00
1981.3157-01	16-Nov-16	Bowden Tree Consultancy	Consultancy Services	781.00
1981.3304-01	16-Nov-16	Dept Of Planning	DAP Application-L4 Bay Court	3,503.00
1981.332-01	16-Nov-16	Forpark Australia	Parts	220.00
1981.3412-01	16-Nov-16	AAM Pty Ltd	Consultancy Services	1,045.00
1981.3485-01	16-Nov-16	McCorkell Constructions Pty Ltd	Harrisdale Pavilion Stage 2-Claim VI	881,515.79
1981.357-01	16-Nov-16	Nosh Catering	Catering-October 2016	585.75
1981.3716-01	16-Nov-16	The Full Circle Group Pty Ltd	Insight Reporting-October 2016	660.00
1981.3718-01	16-Nov-16	Brilliance Cleaning Services	Cleaning Services	572.00
1981.374-01	16-Nov-16	Hays Personnel Services (Aust) Pty Ltd	Hire of Temporary Staff	6,168.73
1981.3811-01	16-Nov-16	Budget Rent a Car	Hire of Motor Vehicle	2,054.16
1981.388-01	16-Nov-16	Hort West Industries Pty Ltd	Garden Maintenance	5,404.98
1981.4176-01	16-Nov-16	Evans Security Service	Security Services	1,402.50
1981.4183-01	16-Nov-16	Wilson Security Services	Security Services	209.65
1981.4288-01	16-Nov-16	Skateboarding WA	Skate Clinics-Youth Program	2,062.50
1981.4374-01	16-Nov-16	Aspect Security Pty Ltd	Remove Security System-Champion Centre	526.90
1981.440-01	16-Nov-16	Kott Gunning Lawyers	Legal Advice	305.58
1981.4466-01	16-Nov-16	C A Thomson	Expenses Reimbursements	608.38
1981.4506-01	16-Nov-16	Steenhoff Barristers & Solicitors	Legal Advice	500.50
1981.4563-01	16-Nov-16	Event Services & Productions	Event Management-2016 Perth Kilt Run	32,766.25
1981.4582-01	16-Nov-16	Barking Wolf Pty Ltd	Film Project-Ben Strange Exhibition	3,826.02
1981.4596-01	16-Nov-16	Wildthyme Natural Soap	Souvenirs-AVC	174.35
1981.463-01	16-Nov-16	Lo-Go Appointments	Hire of Temporary Staff	5,621.04
1981.4752-01	16-Nov-16	Micktric Events	Hire of Equipment	1,859.00
1981.4770-01	16-Nov-16	Red Ginger Services	Perfect Imperfections Workshop	500.00
1981.4771-01	16-Nov-16	Jaimie's School Of Visual Art	Perfect Imperfections Workshop	400.00
1981.4785-01	16-Nov-16	Well Done International Pty Ltd	After Hours Phone Service-October 2016	2,885.63
1981.4896-01	16-Nov-16	Peel Engraving & Rubber Stamp Co	Stationery	53.90
1981.4902-01	16-Nov-16	Paramount Electrical Services	Electrical Services	351.75
1981.4938-01	16-Nov-16	Mills Corporation Pty Ltd T/As Mills Resources	Hire of Temporary Staff	926.40
1981.5001-01	16-Nov-16	Labourforce Impex Personnel Pty Ltd	Hire of Temporary Staff	3,102.86
1981.5033-01	16-Nov-16	Hot Pixel	Photography Services-SIA Fashion Show	725.00
1981.572-01	16-Nov-16	Quick Corporate Australia Pty Ltd	Stationery	480.03
1981.579-01	16-Nov-16	Railway Avenue Vet Hospital	Animal Euthanasia	87.00
1981.63-01	16-Nov-16	Armada Newsagency	Newspapers	180.00

Accounts Paid and Submitted to City Strategy Committee Held on 12 December 2016

Cheque or EFT No.	Date	Payee	Description	Amount
1981.669-01	16-Nov-16	Telstra	Telephone Charges	277.01
1981.744-01	16-Nov-16	Water Corporation	Water Charges	64.11
1981.752-01	16-Nov-16	West Side Safety Products	Protective Clothing	1,253.62
1981.754-01	16-Nov-16	Westbooks	Library Resources	397.34
1981.759-01	16-Nov-16	Synergy Energy	Electricity Charges	195,427.20
1981.805-01	16-Nov-16	Southside Mitsubishi	1 x New Motor Vehicle	43,678.56
1981.851-01	16-Nov-16	Master Builders Association (WA)	Staff Training	1,335.00
1981.859-01	16-Nov-16	Our Community	Membership Renewal	330.00
1981.980-01	16-Nov-16	D J Sherrard	Gatekeeper-Roleystone Greenwaste Site	1,680.00
1981.99-01	16-Nov-16	Australia Post	Postage Charges	17,329.49
1982.3005-01	16-Nov-16	Forrest Road Fresh	Catering-Ignite Basketball Program	688.74
1982.4715-01	16-Nov-16	R J Indlich	Cultural Facilitator-After School Program	250.00
1982.5024-01	16-Nov-16	Perth Face Painter	Entertainment-Twilight Markets	280.00
1983.120-01	18-Nov-16	Baileys Fertilisers	Gardening Products	2,692.25
1983.127-01	18-Nov-16	Beaver Tree Services Aust Pty Ltd	Treelopping	26,070.20
1983.129-01	18-Nov-16	Benara Nurseries	Gardening Products	372.35
1983.1302-01	18-Nov-16	WH Location Services Pty Ltd	Locate Utility Services-Railway Avenue	418.00
1983.1347-01	18-Nov-16	Byford Glass	Repair Broken Windows-Variouids Locations	2,160.00
1983.1482-01	18-Nov-16	Fuji Xerox Australia Co Ltd	Stationery	361.13
1983.1607-01	18-Nov-16	Taborda Contracting Pty Ltd	Hire of Traffic Controllers	33,945.93
1983.161-01	18-Nov-16	Browns Sweeping	Street Sweeping	18,060.00
1983.1708-01	18-Nov-16	Book Easy Pty Ltd	Bookeasy Commission-October 2016	220.00
1983.1763-01	18-Nov-16	Oven Sparkle Pty Ltd	Clean BBQ's-October 2016	1,409.10
1983.1790-01	18-Nov-16	H S Brooking	Painting Services-Variou Locations	3,420.00
1983.1841-01	18-Nov-16	Kleenit Pty Ltd	Clean BBQ's-October 2016	250.80
1983.199-01	18-Nov-16	Charter Plumbing & Gas	Plumbing Services	1,254.90
1983.2041-01	18-Nov-16	Woodlands Distributors & Agencies Pty Ltd	Signs	4,480.85
1983.2067-01	18-Nov-16	A Lewis & Sons	Drill Bore-Cross Park	4,330.15
1983.2084-01	18-Nov-16	Creative Driveways & Fencing	Mulching Services-Variou Locations	6,050.00
1983.2183-01	18-Nov-16	Hart Sport	Sporting Equipment	105.70
1983.2310-01	18-Nov-16	C L Stace	Entertainment-Library Event	330.00
1983.2427-01	18-Nov-16	Ross's Milk Supply	Refreshments	387.55
1983.2475-01	18-Nov-16	Rider Levett Bucknall WA Pty Ltd	Consultancy Services	1,936.00
1983.2697-01	18-Nov-16	Aussie Earthworks Pty Ltd	Hire of Equipment	17,776.95
1983.2709-01	18-Nov-16	The Trinity's Contractor	Garden Maintenance	2,112.00
1983.2831-01	18-Nov-16	Apple Pty Ltd	Computer Equipment	674.30
1983.2867-01	18-Nov-16	Rent A Fence Pty Ltd	Hire of Equipment	89.38

Accounts Paid and Submitted to City Strategy Committee Held on 12 December 2016

Cheque or EFT No.	Date	Payee	Description	Amount
1983.3069-01	18-Nov-16	Jones Lang Lasalle (WA) Pty Ltd	Variable Outgoings-November 2016	12,374.31
1983.3082-01	18-Nov-16	Sonic HealthPlus	Preplacement Medicals	445.50
1983.3154-01	18-Nov-16	Fratelle Group Pty Ltd	Consultancy Services	14,355.00
1983.3231-01	18-Nov-16	J A Coxall	Expenses Reimbursements	130.00
1983.3254-01	18-Nov-16	D M Rohan	Expenses Reimbursements	323.10
1983.33-01	18-Nov-16	ALS Library Services Pty Ltd	Library Resources	1,266.51
1983.3315-01	18-Nov-16	DCW Enterprises	Canter Lever Gate-Landfill Site	21,375.48
1983.341-01	18-Nov-16	Gibbons Holden	1 x New Motor Vehicle	41,020.40
1983.3412-01	18-Nov-16	AAM Pty Ltd	Consultancy Services	715.00
1983.345-01	18-Nov-16	Godfreys Kelmscott	Parts	718.20
1983.357-01	18-Nov-16	Nosh Catering	Catering-October 2016	948.75
1983.3619-01	18-Nov-16	All Earth Waste Collection	Greenwaste Collections-Variou Locations	28,989.64
1983.3627-01	18-Nov-16	N J Woodenberg	Expenses Reimbursements	189.00
1983.371-01	18-Nov-16	Purple Pig Australia Pty Ltd	Parts	814.88
1983.3811-01	18-Nov-16	Budget Rent a Car	Hire of Motor Vehicle	1,397.24
1983.3856-01	18-Nov-16	Mother Earth Gardening & Landscaping	Garden Maintenance	638.00
1983.3862-01	18-Nov-16	Spraymaster Spray Shop	Parts	337.88
1983.3925-01	18-Nov-16	The Information Management Group Pty Ltd	Archival Storage-October 2016	663.62
1983.4031-01	18-Nov-16	Woodies Charcoal Chicken	Catering	383.15
1983.4050-01	18-Nov-16	L M Darby	Staff Training	260.00
1983.411-01	18-Nov-16	JAE Contractors	Install Firebreaks-Variou Locations	6,600.00
1983.418-01	18-Nov-16	JLR Pumps	Repair Bore Pumps-Variou Locations	2,233.00
1983.4195-01	18-Nov-16	E A Benson	Expenses Reimbursements	90.00
1983.4235-01	18-Nov-16	AusQ Training	Staff Training	1,737.00
1983.4306-01	18-Nov-16	ENGIE Mechanical Services Pty Ltd	Airconditioning Maintenance	2,827.75
1983.4337-01	18-Nov-16	Plants & Garden Rentals	Hire of Plants-November 2016	1,678.60
1983.4418-01	18-Nov-16	Prestige Property Maintenance Pty Ltd	Garden Maintenance	10,298.09
1983.4504-01	18-Nov-16	Cirrus Networks	Computer Software Licenses	6,012.05
1983.4525-01	18-Nov-16	Black Rubber Pty Ltd	Tyres	77.00
1983.4533-01	18-Nov-16	Turf Care WA Pty Ltd	Garden Maintenance	19,938.15
1983.456-01	18-Nov-16	Liquor Barons Armadale	Refreshments	431.63
1983.4605-01	18-Nov-16	Eco Party Box	Crockery	81.29
1983.4635-01	18-Nov-16	Pumps Australia Pty Ltd	Parts	572.00
1983.4698-01	18-Nov-16	The Workwear Group	Protective Clothing	350.21
1983.4715-01	18-Nov-16	R J Indich	Entertainment-White Ribbon Day	200.00
1983.4752-01	18-Nov-16	Micktric Events	Event Theming-Twilight Markets	2,178.00
1983.4843-01	18-Nov-16	Estuary Bobcats	Hire of Equipment	20,415.34

Accounts Paid and Submitted to City Strategy Committee Held on 12 December 2016

Cheque or EFT No.	Date	Payee	Description	Amount
1983.4878-01	18-Nov-16	Ndevr Environmental Pty Ltd	Landfill Gas Report	1,410.75
1983.4902-01	18-Nov-16	Paramount Electrical Services	Electrical Services	2,577.00
1983.4938-01	18-Nov-16	Mills Corporation Pty Ltd T/As Mills Resources	Hire of Temporary Staff	926.40
1983.4997-01	18-Nov-16	Vetwest Pty Ltd	Cat Boarding	52.50
1983.5015-01	18-Nov-16	Commercial Refrigeration Industries P/L	Coolroom-John Dunn Pavilion	8,905.60
1983.5036-01	18-Nov-16	Spine & Limb Foundation Inc	Van Delivery Services-Libraries	6,808.87
1983.515-01	18-Nov-16	Neverfail Springwater Limited	Refreshments	45.40
1983.551-01	18-Nov-16	Brownes Foods Operation Pty Ltd	Refreshments	170.37
1983.579-01	18-Nov-16	Railway Avenue Vet Hospital	Animal Euthanasia	802.65
1983.597-01	18-Nov-16	Roleystone Volunteer Fire Brigade	Expenses Reimbursements	694.80
1983.599-01	18-Nov-16	Adasound	Hire of Equipment	1,187.50
1983.606-01	18-Nov-16	Sage Consulting Engineers Pty Ltd	Consultancy Services	2,706.00
1983.607-01	18-Nov-16	SAI Global Limited	Australian Standards	77.42
1983.667-01	18-Nov-16	Target Towing Service	Towing Charges	880.00
1983.670-01	18-Nov-16	Termico Pest Management	Weed & Pest Control	594.00
1983.68-01	18-Nov-16	Armadale State Emergency Service (SES)	Expenses Reimbursements	418.37
1983.74-01	18-Nov-16	Armadale Kelmiscott Self Storage	Storage Unit Rental	240.00
1983.759-01	18-Nov-16	Synergy Energy	Electricity Charges	47.20
1983.818-01	18-Nov-16	Parks & Leisure Australia	Staff Training	440.00
1983.846-01	18-Nov-16	Apace Aid Incorporated	Staff Training	550.00
1983.847-01	18-Nov-16	Office Line	Office Furniture	11,053.90
1983.85-01	18-Nov-16	Aslab Pty Ltd	Asphalt Testing-Nicholson Road	1,768.80
1983.909-01	18-Nov-16	Y M Loveland	Telephone Reimbursement	480.00
1983.978-01	18-Nov-16	Armadale Newspaper Delivery	Newspapers	20.00
1984.1188-01	23-Nov-16	Local Government Planners Association	Staff Training	30.00
1984.127-01	23-Nov-16	Beaver Tree Services Aust Pty Ltd	Treelopping	131,004.15
1984.1385-01	23-Nov-16	Armadale Kelmiscott Refrigeration	Degas Fridges/Freezers-Landfill Site	515.00
1984.1404-01	23-Nov-16	The Manse Restaurant	Catering	36.00
1984.155-01	23-Nov-16	BP Australia Pty Ltd	Fuel & Oils	30,445.13
1984.1607-01	23-Nov-16	Taborda Contracting Pty Ltd	Hire of Traffic Controllers	3,879.02
1984.161-01	23-Nov-16	Browns Sweeping	Street Sweeping	2,024.00
1984.1621-01	23-Nov-16	Dean Kalia Pty Ltd	Concrete Services	27,468.85
1984.172-01	23-Nov-16	Byford Bobcats	Hire of Bobcat	188.00
1984.1790-01	23-Nov-16	H S Brooking	Painting Services-Various Locations	3,330.00
1984.1806-01	23-Nov-16	Level & Detail Surveys	Surveys-Various Locations	4,877.80
1984.1823-01	23-Nov-16	Herron Todd White (WA) Pty Ltd	Valuations-Various Properties	11,000.00
1984.1841-01	23-Nov-16	Kleenit Pty Ltd	Remove Graffiti-Various Locations	3,113.00

Accounts Paid and Submitted to City Strategy Committee Held on 12 December 2016

Cheque or EFT No.	Date	Payee	Description	Amount
1984.1887-01	23-Nov-16	Colas WA	Bitumen Emulsion	9,288.82
1984.199-01	23-Nov-16	Charter Plumbing & Gas	Plumbing Services	134.00
1984.201-01	23-Nov-16	Chefmaster Australia	Cleaning Materials	483.75
1984.2103-01	23-Nov-16	Flexi Staff Pty Ltd	Hire of Temporary Staff	1,676.93
1984.2199-01	23-Nov-16	Segafredo Zanetti Pty Ltd	Kiosk Supplies	378.30
1984.2337-01	23-Nov-16	F J Grieves	Expenses Reimbursements	227.19
1984.2339-01	23-Nov-16	PFD Food Services	Refreshments	2,875.45
1984.2371-01	23-Nov-16	Flexipole Industries Pty Ltd	Fencing-Cryke Park	19,074.00
1984.2437-01	23-Nov-16	Drainflow Services Pty Ltd	High Pressure Cleaning-Variou Locations	46,274.25
1984.2697-01	23-Nov-16	Aussie Earthworks Pty Ltd	Hire of Equipment	16,683.00
1984.2709-01	23-Nov-16	The Trinity's Contractor	Garden Maintenance	770.00
1984.277-01	23-Nov-16	Landgate	Title Searches	268.40
1984.284-01	23-Nov-16	Dept of Transport	Motor Vehicle Searches-October 2016	52.80
1984.295-01	23-Nov-16	Down Under Signs Pty Ltd	Signs	352.00
1984.297-01	23-Nov-16	MMJ Real Estate (WA) Pty Ltd	Consultancy Services	11,858.00
1984.305-01	23-Nov-16	Ejan Communications	Hire of Equipment-November 2016	651.20
1984.309-01	23-Nov-16	Envirotechnics	Weed & Pest Control	220.00
1984.3188-01	23-Nov-16	M Dawson	Expenses Reimbursements	291.70
1984.3195-01	23-Nov-16	Greenfield Gardening	Garden Maintenance	2,964.50
1984.3562-01	23-Nov-16	Height Safety Solutions	Roof Inspection's-Variou Buildings	5,877.32
1984.357-01	23-Nov-16	Nosh Catering	Catering-October 2016	624.80
1984.3596-01	23-Nov-16	Spartans Little Athletics Club Inc	KidSport Funding	170.00
1984.3619-01	23-Nov-16	All Earth Waste Collection	Greenwaste Collections-Variou Locations	15,018.36
1984.3693-01	23-Nov-16	Acurix Networks Pty Ltd	Jull Street Analytics	825.00
1984.374-01	23-Nov-16	Hays Personnel Services (Aust) Pty Ltd	Hire of Temporary Staff	2,994.84
1984.3748-01	23-Nov-16	Revive Emergency Medical Training	Staff Training	1,166.00
1984.3798-01	23-Nov-16	CANCELLED	CANCELLED	0.00
1984.3856-01	23-Nov-16	Mother Earth Gardening & Landscaping	Garden Maintenance	2,420.00
1984.388-01	23-Nov-16	Hort West Industries Pty Ltd	Garden Maintenance	25,205.69
1984.3955-01	23-Nov-16	D Hutchens	Contracted Professional Artist-Urban Art Project	7,484.00
1984.4104-01	23-Nov-16	Alisco Pty Ltd	Sanitary Services-October 2016	1,837.40
1984.4111-01	23-Nov-16	Southern Districts Netball	KidSport Funding	330.00
1984.4183-01	23-Nov-16	Wilson Security Services	Security Services	396.78
1984.4269-01	23-Nov-16	Professional Cabling Services	Data Cabling-Champion Centre	13,057.00
1984.4304-01	23-Nov-16	B J Sofield	Expenses Reimbursements	219.12
1984.4319-01	23-Nov-16	Datacom Systems (WA) Pty Ltd	Computer Equipment	5,499.34
1984.4622-01	23-Nov-16	CANCELLED	CANCELLED	0.00

Accounts Paid and Submitted to City Strategy Committee Held on 12 December 2016

Cheque or EFT No.	Date	Payee	Description	Amount
1984.463-01	23-Nov-16	Lo-Go Appointments	Hire of Temporary Staff	3,140.93
1984.4634-01	23-Nov-16	Every Second Counts	Emergency Management Plan-Depot	1,237.50
1984.4638-01	23-Nov-16	WA Structural Consulting Engineers P/L	Consultancy Services	1,045.00
1984.4746-01	23-Nov-16	McLean Contracting Pty Ltd	Hire of Equipment	5,016.00
1984.4858-01	23-Nov-16	DFP Recruitment Services	Hire of Temporary Staff	7,570.90
1984.4898-01	23-Nov-16	E L Stinton	Expenses Reimbursement	221.25
1984.4902-01	23-Nov-16	Paramount Electrical Services	Electrical Services	1,864.20
1984.4934-01	23-Nov-16	Instant Products Group	Transport Charges	3,910.50
1984.4938-01	23-Nov-16	Mills Corporation Pty Ltd T/As Mills Resources	Hire of Temporary Staff	926.40
1984.4953-01	23-Nov-16	Byford Bushrangers Inc	KidSport Funding	100.00
1984.4977-01	23-Nov-16	Bartco Traffic Equipment Pty Ltd	Electronic Visual Information Systems-Ranger Services	25,369.96
1984.5001-01	23-Nov-16	Labourforce Impex Personnel Pty Ltd	Hire of Temporary Staff	1,475.88
1984.5040-01	23-Nov-16	C L Thomson	Refund-Overpayment of Rates	223.86
1984.5042-01	23-Nov-16	I E Patterson	Refund-Overpayment of Rates	309.55
1984.628-01	23-Nov-16	SUEZ Recycling & Recovery Pty Ltd	Bulk Rubbish Bins	1,172.02
1984.642-01	23-Nov-16	Southern Wire Industrial Pty Ltd	Gate-John Dunn Reserve	2,563.00
1984.662-01	23-Nov-16	Supa Pest & Weed Control	Weed & Pest Control	2,035.00
1984.669-01	23-Nov-16	Telstra	Telephone Charges	16,861.80
1984.68-01	23-Nov-16	Armadale State Emergency Service (SES)	Expenses Reimbursements	606.40
1984.690-01	23-Nov-16	Toll Fast	Courier Services	60.03
1984.744-01	23-Nov-16	Water Corporation	Water Charges	15.31
1984.759-01	23-Nov-16	Synergy Energy	Electricity Charges	49,099.11
1984.886-01	23-Nov-16	Exteria Street & Park Outfitters	Park Furniture	1,980.00
1985.109-01	25-Nov-16	Australian Metal Workers Union	Payroll Deductions	84.10
1985.112-01	25-Nov-16	Australian Services Union	Payroll Deductions	858.22
1985.206-01	25-Nov-16	Child Support Agency	Payroll Deductions	1,574.12
1985.214-01	25-Nov-16	City of Armadale-Social Club	Payroll Deductions	306.00
1985.217-01	25-Nov-16	City of Gosnells	Payroll Deductions	285.00
1985.2335-01	25-Nov-16	Health Insurance Fund of WA	Payroll Deductions	70.10
1985.4156-01	25-Nov-16	Quick Super	Payroll Deductions	195,216.87
1985.453-01	25-Nov-16	LGRCEU	Payroll Deductions	563.82
1985.622-01	25-Nov-16	Shire of Mundaring	Payroll Deductions	85.00
1985.623-01	25-Nov-16	Shire of Serpentine-Jarrahdale	Payroll Deductions	230.89
1986.1056-01	25-Nov-16	Allwest Windscreens & Tinting	Parts-P1869	484.99
1986.113-01	25-Nov-16	Australian Taxation Office	Payroll Deductions	294,574.00
1986.127-01	25-Nov-16	Beaver Tree Services Aust Pty Ltd	Treelopping	28,084.50
1986.129-01	25-Nov-16	Benara Nurseries	Gardening Products	1,427.75

Accounts Paid and Submitted to City Strategy Committee Held on 12 December 2016

Cheque or EFT No.	Date	Payee	Description	Amount
1986.1310-01	25-Nov-16	SJ Rural Supplies	Hardware	2,620.80
1986.1422-01	25-Nov-16	Onhold Magic Pty Ltd	After Hours Message Christmas 2016	108.90
1986.1482-01	25-Nov-16	Fuji Xerox Australia Co Ltd	Stationery	1,410.75
1986.1488-01	25-Nov-16	Institute of Public Works Aust(WA Division)	Staff Training	475.00
1986.1507-01	25-Nov-16	Reece Pty Ltd	Parts	55.80
1986.1519-01	25-Nov-16	Kerb-Fix	Construction of Concrete Crossovers	1,262.80
1986.1554-01	25-Nov-16	Parkland 1998 Pty Ltd	Parts	64,141.40
1986.1597-01	25-Nov-16	ADS Automation Pty Ltd	Supply & Program airkeys-O/N 116728	1,039.50
1986.1607-01	25-Nov-16	Taborda Contracting Pty Ltd	Hire of Traffic Controllers	37,400.17
1986.161-01	25-Nov-16	Browns Sweeping	Street Sweeping	1,320.00
1986.1669-01	25-Nov-16	Tourism Council WA Limited	Staff Training	350.50
1986.172-01	25-Nov-16	Byford Bobcats	Hire of Bobcat	2,067.00
1986.1732-01	25-Nov-16	Refresh Waters Pty Ltd	Refreshments	62.50
1986.1790-01	25-Nov-16	H S Brooking	Painting Services-Frye Park	450.00
1986.1841-01	25-Nov-16	Kleenit Pty Ltd	Remove Graffiti-Various Locations	2,307.80
1986.1881-01	25-Nov-16	Parkerville Children & Youth Care Inc	Keeping Kids Safe Initiative	26,032.60
1986.199-01	25-Nov-16	Charter Plumbing & Gas	Plumbing Services	1,330.55
1986.2084-01	25-Nov-16	Creative Driveways & Fencing	Fencing-Fletcher Park	6,660.00
1986.2120-01	25-Nov-16	TNT Express	Courier Services	175.88
1986.232-01	25-Nov-16	Coca-Cola Amatil (Aust) Pty Ltd	Refreshments	154.00
1986.2427-01	25-Nov-16	Ross's Milk Supply	Refreshments	412.60
1986.2466-01	25-Nov-16	ATCO Gas Australia Pty Ltd	Loctae Utility Services-Railway Avenue	4,937.91
1986.2474-01	25-Nov-16	All West Plant Hire	Hire of Equipment	11,454.30
1986.2477-01	25-Nov-16	WA Catering Services Pty Ltd	Catering-October 2016	900.00
1986.2492-01	25-Nov-16	Olympic Fine Foods Pty Ltd	Fruit & Nuts Order - 18 October 2016	304.58
1986.2509-01	25-Nov-16	Tourism Marketing & Promotions	SIA Brochure Distribution	1,279.00
1986.2546-01	25-Nov-16	Quality Publishing Australia-QPA	Souvenirs-AVC	319.59
1986.2552-01	25-Nov-16	Programmed Maintenance Services Ltd	Garden Maintenance	572.14
1986.2553-01	25-Nov-16	Natural Area Management & Services	Revegetation/Weed Control-Piara Road Verg	7,892.67
1986.2627-01	25-Nov-16	Ketten Pty Ltd	Perth Street Directories	1,200.65
1986.2682-01	25-Nov-16	Global Spill Control	Parts-Various Plant	1,108.36
1986.2697-01	25-Nov-16	Aussie Earthworks Pty Ltd	Hire of Equipment	975.00
1986.2709-01	25-Nov-16	The Trinity's Contractor	Garden Maintenance	3,828.00
1986.2734-01	25-Nov-16	Superior Pak Pty Ltd	Repairs-P524	605.55
1986.2779-01	25-Nov-16	Award Contracting	Survey-Paterson Road	2,554.75
1986.2831-01	25-Nov-16	Apple Pty Ltd	Computer Equipment	2,910.60
1986.287-01	25-Nov-16	Dieback Treatment Services	Risk Assessment-Roley/bushcare Reserve	7,470.00

Accounts Paid and Submitted to City Strategy Committee Held on 12 December 2016

Cheque or EFT No.	Date	Payee	Description	Amount
1986.3045-01	25-Nov-16	HAS Earthmoving	Hire of Equipment	82,769.63
1986.3082-01	25-Nov-16	Sonic HealthPlus	Preplacement Medicals	148.50
1986.3114-01	25-Nov-16	Blackrooke Advertising & Design	Advertising	1,174.25
1986.3196-01	25-Nov-16	Smart Colour Signs	Signs	421.30
1986.3258-01	25-Nov-16	Donovan Payne Architects Pty Ltd	Consultancy Services	31,500.00
1986.3294-01	25-Nov-16	Findmypast Australasia Pty Limited	Subscription Renewal	985.50
1986.33-01	25-Nov-16	ALS Library Services Pty Ltd	Library Resources	444.24
1986.3463-01	25-Nov-16	Big W	Library Resources	651.00
1986.3567-01	25-Nov-16	ELM (WA) Pty Ltd	Garden Maintenance	3,609.67
1986.3675-01	25-Nov-16	Carlisle Events Hire Pty Ltd	Hire of Equipment	1,262.80
1986.3703-01	25-Nov-16	Fuji Xerox Business Force Pty Ltd	Back Scanning Project-October 2016	5,273.35
1986.3798-01	25-Nov-16	Essential Environmental	Ground Water Monitoring-Forrestdale Business Park	22,669.90
1986.3856-01	25-Nov-16	Mother Earth Gardening & Landscaping	Garden Maintenance	594.00
1986.4265-01	25-Nov-16	Bennelongia Pty Ltd	Mosquito Monitoring-October 2016	2,021.25
1986.4306-01	25-Nov-16	ENGIE Mechanical Services Pty Ltd	Airconditioning Maintenance	779.25
1986.4361-01	25-Nov-16	Huaira	Entertainment-Hawkers Markets	1,000.00
1986.4374-01	25-Nov-16	Aspect Security Pty Ltd	Repairs-CCTV Cameras	1,101.65
1986.4378-01	25-Nov-16	Avantgarde Technologies Pty Ltd	Computer Equipment	28,433.54
1986.4384-01	25-Nov-16	Classic Sounds Orchestra Association	Entertainment-Twilight Markets	200.00
1986.4386-01	25-Nov-16	Selendang Sutra Dance Troupe	Entertainment-Hawkers Markets	500.00
1986.4395-01	25-Nov-16	Schneider Electric IT Australia Pty Ltd	Computer Maintenance Renewal	27,916.90
1986.440-01	25-Nov-16	Kott Gunning Lawyers	Legal Advice	19,782.31
1986.4421-01	25-Nov-16	Mettam Legal	Legal Advice	3,378.10
1986.448-01	25-Nov-16	Lawn Doctor	Gardening Products	1,782.00
1986.4495-01	25-Nov-16	TES Electrical	Electrical Services	6,107.83
1986.4504-01	25-Nov-16	Cirrus Networks	Computer Equipment	9,922.61
1986.4509-01	25-Nov-16	Swanview Plant Farm Pty Ltd	Gardening Products	2,739.00
1986.4521-01	25-Nov-16	Anser Group Pty Ltd	Lighting Design-Gwynne Park	14,264.25
1986.4525-01	25-Nov-16	Black Rubber Pty Ltd	Tyres	1,108.80
1986.4564-01	25-Nov-16	LTC Asphalt Pty Ltd	Asphalt Layed	19,805.50
1986.4598-01	25-Nov-16	Hydroquip Pumps	Irrigation Design-William Skeet Reserve	2,805.00
1986.460-01	25-Nov-16	Local Government Managers Aust WA	Staff Training	285.00
1986.463-01	25-Nov-16	Lo-Go Appointments	Hire of Temporary Staff	13,662.87
1986.4665-01	25-Nov-16	South City Lawns	Garden Maintenance	627.00
1986.4698-01	25-Nov-16	The Workwear Group	Staff Uniforms	124.95
1986.4699-01	25-Nov-16	InfoSurety Pty Ltd trading as InfoTrust	Computer Equipment	44,589.60
1986.4715-01	25-Nov-16	R J Indich	Cultural Facilitator-After School Program	200.00

Accounts Paid and Submitted to City Strategy Committee Held on 12 December 2016

Cheque or EFT No.	Date	Payee	Description	Amount
1986.4752-01	25-Nov-16	Micktric Events	Hire of Equipment	1,859.00
1986.4780-01	25-Nov-16	Kleen West Distributors	Cleaning Chemicals	132.00
1986.481-01	25-Nov-16	A F Maxwell	Telephone Reimbursement	101.00
1986.4896-01	25-Nov-16	Peel Engraving & Rubber Stamp Co	Stationery	75.90
1986.4902-01	25-Nov-16	Paramount Electrical Services	Electrical Services	8,854.85
1986.4930-01	25-Nov-16	R Johns	Entertainment-Library Event	220.00
1986.4959-01	25-Nov-16	Terrific Trading Pty Ltd	Staff Training	660.00
1986.5001-01	25-Nov-16	Labourforce Impex Personnel Pty Ltd	Hire of Temporary Staff	1,828.81
1986.5013-01	25-Nov-16	Huckleberry Tanks and Water Service	Water Tank-Landfill Site	15,876.99
1986.5029-01	25-Nov-16	P B O'Connor	Entertainment-Music in the Mall	500.00
1986.5038-01	25-Nov-16	Holiday Guide Pty Ltd	Marketing Fee-Completed Bookeasy Booking	20.01
1986.517-01	25-Nov-16	Nice'n' Clean Carpet Cleaning	Cleaning Services	308.00
1986.667-01	25-Nov-16	Target Towing Service	Towing Charges	110.00
1986.682-01	25-Nov-16	Examiner Newspapers (WA)	Advertising	250.00
1986.712-01	25-Nov-16	Landgate - Perth	GRV Valuations	4,957.47
1986.74-01	25-Nov-16	Armada Kelmiscott Self Storage	Storage Unit Rental	140.00
1986.752-01	25-Nov-16	West Side Safety Products	Protective Clothing	1,209.62
1986.780-01	25-Nov-16	Work Clobber	Protective Clothing	415.80
1986.847-01	25-Nov-16	Office Line	Office Furniture	8,088.30
1986.85-01	25-Nov-16	Aslab Pty Ltd	Asphalt Testing-Nicholson Road	1,393.44
1986.912-01	25-Nov-16	St John Ambulance WA Pty Ltd	Staff Training	220.00
1986.980-01	25-Nov-16	D J Sherrard	Gatekeeper-Roleystone Greenwaste Site	1,680.00
1988.1003-01	30-Nov-16	Tyrepower Kelmiscott	Tyres	2,146.00
1988.1061-01	30-Nov-16	Cummins Engine Company Pty Ltd	Parts	102.84
1988.1079-01	30-Nov-16	Greenway Enterprises	Gardening Products	2,230.80
1988.1166-01	30-Nov-16	Sports Turf Technology Pty Ltd	Consultancy Services	22,211.40
1988.1178-01	30-Nov-16	Toolmart	Parts	252.80
1988.1209-01	30-Nov-16	Instant Waste Management	Pump Out Grease Traps-October 2016	1,188.00
1988.1248-01	30-Nov-16	Academy Services (WA) Pty Ltd	Cleaning Services-October 2016	1,594.64
1988.1405-01	30-Nov-16	Buick Holdings Pty Ltd	1 x New Motor Vehicle	63,547.95
1988.1456-01	30-Nov-16	Glenview Machine Kerbing	Kerbing Services-Various Locations	25,310.60
1988.1488-01	30-Nov-16	Institute of Public Works Aust(WA Division)	Staff Training	725.00
1988.150-01	30-Nov-16	Office Max	Stationery	1,799.28
1988.1519-01	30-Nov-16	Kerb-Fix	Construction of Concrete Crossovers	1,047.20
1988.1560-01	30-Nov-16	Paramount Security Services	Security Services	623.70
1988.1575-01	30-Nov-16	Western Power Networks	Street Lighting-Wungong Road/Harber Drive	18,057.00
1988.1596-01	30-Nov-16	Classic Hire	Hire of Equipment	3,465.00

Accounts Paid and Submitted to City Strategy Committee Held on 12 December 2016

Cheque or EFT No.	Date	Payee	Description	Amount
1988.1607-01	30-Nov-16	Taborda Contracting Pty Ltd	Hire of Traffic Controllers	19,854.07
1988.161-01	30-Nov-16	Browns Sweeping	Street Sweeping	20,520.50
1988.1634-01	30-Nov-16	Multi Turf	Garden Maintenance	6,002.00
1988.1682-01	30-Nov-16	Widdeson's Hire Service	Hire of Equipment	794.00
1988.1683-01	30-Nov-16	Trenchbusters Pty Ltd	Bulk Rubbish Bins	910.00
1988.172-01	30-Nov-16	Byford Bobcats	Hire of Bobcat	514.80
1988.176-01	30-Nov-16	Cabcharge Australia Pty Ltd	Cabcharge Dockets	578.98
1988.1772-01	30-Nov-16	Hope Community Services Inc	Youth Outreach Services	9,350.00
1988.1777-01	30-Nov-16	Alleasing Pty Ltd	Computer Equipment Leases	38,145.52
1988.1806-01	30-Nov-16	Level & Detail Surveys	Surveys-Variou Locations	5,682.15
1988.1841-01	30-Nov-16	Kleenit Pty Ltd	Remove Graffiti-Variou Locations	275.00
1988.1868-01	30-Nov-16	Pirtek Canning Vale	Parts-Variou Plant	1,158.10
1988.194-01	30-Nov-16	Challenge Chemicals Australia	Cleaning Chemicals	234.96
1988.1957-01	30-Nov-16	Wren Oil	Admin & Compliance Fees	16.50
1988.1977-01	30-Nov-16	SERCUL Inc	Weed Control	990.00
1988.199-01	30-Nov-16	Charter Plumbing & Gas	Plumbing Services	1,476.85
1988.2006-01	30-Nov-16	Pavement Analysis Pty Ltd	Pavement Investigation-Railway Avenue	1,476.85
1988.201-01	30-Nov-16	Chefmaster Australia	Cleaning Materials	3,300.00
1988.2027-01	30-Nov-16	Dept of Premier and Cabinet	Advertising	654.00
1988.2103-01	30-Nov-16	Flexi Staff Pty Ltd	Hire of Temporary Staff	378.16
1988.2178-01	30-Nov-16	Gymcare	Service Gym Equipment	1,985.97
1988.2199-01	30-Nov-16	Segafredo Zanetti Pty Ltd	Kiosk Supplies	133.65
1988.22-01	30-Nov-16	AK Paint Place	Hardware	87.00
1988.2208-01	30-Nov-16	Biram Nurseries	Gardening Products	336.20
1988.223-01	30-Nov-16	CJD Equipment Pty Ltd	Parts-Variou Plant	1,933.80
1988.227-01	30-Nov-16	Cleanaway	Recycling Collections-October 2016	1,589.07
1988.231-01	30-Nov-16	Coates Hire	Hire of Equipment	89,122.06
1988.232-01	30-Nov-16	Coca-Cola Amatil (Aust) Pty Ltd	Refreshments	18,914.43
1988.2329-01	30-Nov-16	Ricoh Australia Pty Ltd	Photocopier Usage	4,164.20
1988.2339-01	30-Nov-16	PFD Food Services	Refreshments	11,387.93
1988.2376-01	30-Nov-16	State Wide Turf Services	Turfing Services-Variou Locations	681.80
1988.2377-01	30-Nov-16	K-Line Fencing Group	Fencing-Golf Course Weather Station	55,612.92
1988.2388-01	30-Nov-16	Underground Power Development	Consultancy Services	4,383.50
1988.2389-01	30-Nov-16	BGC Concrete	Concrete Products	2,530.00
1988.2391-01	30-Nov-16	Lightforce Assets Pty Ltd	Guardrails-Nicholson Road	24,972.86
1988.2474-01	30-Nov-16	All West Plant Hire	Hire of Equipment	43,145.30
1988.2494-01	30-Nov-16	D B Heliams	Expenses Reimbursements	11,239.80
				80.00

Accounts Paid and Submitted to City Strategy Committee Held on 12 December 2016

Cheque or EFT No.	Date	Payee	Description	Amount
1988.25-01	30-Nov-16	Alinta Gas	Gas Charges	33.45
1988.2573-01	30-Nov-16	IFAP	Staff Training	515.00
1988.258-01	30-Nov-16	Staples Australia Pty Ltd	Stationery	2,793.61
1988.2584-01	30-Nov-16	Sunnyvale Plants	Gardening Products	225.50
1988.261-01	30-Nov-16	COVS Parts Pty Ltd	Parts-Various Locations	1,573.06
1988.2618-01	30-Nov-16	Cr Donna Shaw	Councillors Allowances	74.99
1988.2735-01	30-Nov-16	Safeman WA Pty Ltd	Protective Clothing	1,195.43
1988.277-01	30-Nov-16	Landgate	Title Searches	447.30
1988.2779-01	30-Nov-16	Award Contracting	Locate Utility Services-Various Locations	973.50
1988.2793-01	30-Nov-16	Onsite Rental Group	Hire of Equipment	5,932.22
1988.2833-01	30-Nov-16	Beacon Equipment	Parts	739.50
1988.2843-01	30-Nov-16	Imagesource Digital Solutions	Printing	700.34
1988.3045-01	30-Nov-16	HAS Earthmoving	Hire of Equipment	57,586.14
1988.3058-01	30-Nov-16	Asphalt in a Bag	Asphalt	1,708.30
1988.3060-01	30-Nov-16	Tyrecycle Pty Ltd	Tyre Recycling	1,339.96
1988.3065-01	30-Nov-16	N Cranfield	Expenses Reimbursement	83.85
1988.309-01	30-Nov-16	Envirotechnics	Weed & Pest Control	247.50
1988.3112-01	30-Nov-16	Southside Care	Community Grant-2016/17	1,100.00
1988.3154-01	30-Nov-16	Fratelle Group Pty Ltd	Consultancy Services	1,540.00
1988.3195-01	30-Nov-16	Greenfield Gardening	Garden Maintenance	2,178.00
1988.3196-01	30-Nov-16	Smart Colour Signs	Signs	44.00
1988.3208-01	30-Nov-16	Direct Trade Supplies Pty Ltd	Hardware	475.20
1988.321-01	30-Nov-16	Filters Plus	Parts	336.60
1988.3223-01	30-Nov-16	Australian Office Leading Brands	Stationery	749.10
1988.3250-01	30-Nov-16	P W Sanders	Telephone Reimbursement	49.95
1988.3274-01	30-Nov-16	Assetic Australia Pty Ltd	Assetic Annual Support/Maintenance 2016/17	53,265.88
1988.328-01	30-Nov-16	Flick Washroom Services	Sanitary Services-October 2016	88.44
1988.336-01	30-Nov-16	Galvins Plumbing Plus	Parts	376.75
1988.3382-01	30-Nov-16	Matt Devlin Photography	Photography Services-Perth Kilt Run 2016	425.00
1988.341-01	30-Nov-16	Gibbons Holden	Parts	277.65
1988.3420-01	30-Nov-16	Riding For The Disable-Oakford	KidSport Funding	4,840.00
1988.3423-01	30-Nov-16	S L Hillel	Expenses Reimbursements	120.99
1988.3433-01	30-Nov-16	Insolvency & Trustee Service Australia	Motor Vehicle Searches-October 2016	34.00
1988.3463-01	30-Nov-16	Big W	Stationery	181.50
1988.3492-01	30-Nov-16	Roleystone Gymnastics Club Inc	KidSport Funding	220.00
1988.3502-01	30-Nov-16	Plantrite	Gardening Products	3,229.05
1988.3543-01	30-Nov-16	Mastec Australia Pty Ltd	Recycling Bins-Landfill Site	9,460.00

Accounts Paid and Submitted to City Strategy Committee Held on 12 December 2016

Cheque or EFT No.	Date	Payee	Description	Amount
1988.3615-01	30-Nov-16	Curtin FM 100.1	Advertising	7,150.00
1988.3665-01	30-Nov-16	S J Allen	Expenses Reimbursement	47.49
1988.374-01	30-Nov-16	Hays Personnel Services (Aust) Pty Ltd	Hire of Temporary Staff	10,556.91
1988.378-01	30-Nov-16	Heatley Sales Pty Ltd	Parts	810.87
1988.3929-01	30-Nov-16	Marketforce	Advertising	7,288.28
1988.3961-01	30-Nov-16	Kelmscott Junior Cricket Club	KidSport Funding	300.00
1988.4005-01	30-Nov-16	XP Solutions Pty Ltd	Annual Software Support/Maintenance	898.37
1988.4046-01	30-Nov-16	Cleandustrial Services Pty Ltd	Cleaning Services-October 2016	38,251.81
1988.4104-01	30-Nov-16	Alsco Pty Ltd	Cleaning Workshop Uniforms-October 2016	415.38
1988.414-01	30-Nov-16	Jason Signmakers	Signs	96.03
1988.4183-01	30-Nov-16	Wilson Security Services	Security Services	4,860.88
1988.4201-01	30-Nov-16	Saferight Pty Ltd	Staff Training	900.00
1988.4211-01	30-Nov-16	Girl Guides WA Inc	KidSport Funding	200.00
1988.4226-01	30-Nov-16	Perth Safety Products Pty Ltd	Hardware	2,035.00
1988.4235-01	30-Nov-16	AusQ Training	Staff Training	579.00
1988.4258-01	30-Nov-16	Hender Lee Electrical Contractors Pty Ltd	Electrical Services	17,369.91
1988.4306-01	30-Nov-16	ENGIE Mechanical Services Pty Ltd	Airconditioning Maintenance	46.75
1988.4313-01	30-Nov-16	Harley Dykstra Pty Ltd	Clifton Street Structure Plan	2,970.00
1988.4330-01	30-Nov-16	Coogee Beach Surf Lifesaving Club Inc	KidSport Funding	324.50
1988.4372-01	30-Nov-16	Roleystone Markets	Major Event Sponsorship-Roleystone Markets	7,000.00
1988.440-01	30-Nov-16	Kott Gunning Lawyers	Legal Advice	2,120.20
1988.4421-01	30-Nov-16	Mettam Legal	Legal Advice	641.41
1988.443-01	30-Nov-16	LD Total	Garden Maintenance	71,514.40
1988.447-01	30-Nov-16	Lawrence & Hanson	Lighting Equipment	206.80
1988.4471-01	30-Nov-16	R K Laffar-Smith	Library Resources	385.00
1988.4504-01	30-Nov-16	Cirrus Networks	Computer Equipment	27,338.82
1988.4525-01	30-Nov-16	Black Rubber Pty Ltd	Tyres	5,982.70
1988.4564-01	30-Nov-16	LTC Asphalt Pty Ltd	Asphalt Layed	49,206.96
1988.460-01	30-Nov-16	Local Government Managers Aust WA	Staff Training	165.00
1988.4638-01	30-Nov-16	WA Structural Consulting Engineers P/L	Consultancy Services	550.00
1988.464-01	30-Nov-16	Lori's Fuel Station	Fuel & Oils	181.28
1988.4652-01	30-Nov-16	Perth Face Painting Company	Entertainment-Hawkers Markets	1,254.00
1988.466-01	30-Nov-16	Macdonald Johnston Pty Ltd	Parts-Various Plant	2,866.14
1988.4671-01	30-Nov-16	Vital Packaging Pty Ltd	Packaging Materials	2,506.70
1988.4694-01	30-Nov-16	Electronic Product Stewardship Australasia Pty Ltd	Recycling Charges-October 2016	2,846.80
1988.4715-01	30-Nov-16	R J Indich	Cultural Facilitator-After School Program	250.00
1988.4736-01	30-Nov-16	Axia Corporate Property	Kelmscott Library Rent-December 2017	17,182.64

Accounts Paid and Submitted to City Strategy Committee Held on 12 December 2016

Cheque or EFT No.	Date	Payee	Description	Amount
1988.4783-01	30-Nov-16	Central Regional TAFE	Staff Training	106.82
1988.4796-01	30-Nov-16	T Ferrier	Christmas Wreaths-Jull Street	4,667.60
1988.4814-01	30-Nov-16	Great Lakes Community Resources Inc	Mattress Recycling-October 2016	6,380.00
1988.4839-01	30-Nov-16	Densford Civil Pty Ltd	Street Lighting-Nicholson Road	91,955.72
1988.484-01	30-Nov-16	Medi-Collect	Syringe Containers-Health Department	297.88
1988.4843-01	30-Nov-16	Estuary Bobcats	Primer Seal-Hopkinson Road	9,377.50
1988.4872-01	30-Nov-16	Ecoscape Australia Pty Ltd	Armadale Settlers Common-Weed Mapping	32,043.55
1988.4883-01	30-Nov-16	Kais Contractors Pty Ltd	Hire of Equipment	21,862.50
1988.4902-01	30-Nov-16	Paramount Electrical Services	Electrical Services	811.70
1988.4908-01	30-Nov-16	Meyer Landscapes	Hire of Equipment	1,320.00
1988.4922-01	30-Nov-16	Braestone Pty Ltd	Consultancy Services-Business System Review	632.50
1988.4938-01	30-Nov-16	Mills Corporation Pty Ltd T/As Mills Resources	Hire of Temporary Staff	926.40
1988.4948-01	30-Nov-16	Pivotel Sattelite Pty Ltd	Telephone Charges	105.91
1988.4994-01	30-Nov-16	AFGRI Equipment Australia Pty Ltd	Parts	91.74
1988.5002-01	30-Nov-16	Around About Fencing & Gates	Repairs	300.00
1988.5016-01	30-Nov-16	Stone Perfect Concrete	Asphalt Layed	74,069.08
1988.502-01	30-Nov-16	Wright Express Fuel Cards Aust Ltd	Fuel & Oils	3,660.08
1988.5025-01	30-Nov-16	A K Yiap	Jull Street Mall-Public Art Work	17,600.00
1988.5046-01	30-Nov-16	D Monaragala	Expenses Reimbursements	101.54
1988.527-01	30-Nov-16	Vodafone Hutchison Australia Pty Ltd	Pager Services-November 2016	610.50
1988.528-01	30-Nov-16	Ixom Operations Pty Ltd	Pool Chemicals	3,185.18
1988.532-01	30-Nov-16	P & G Body Builders Pty Ltd	Repairs-P545	891.00
1988.547-01	30-Nov-16	Peerless JAL Pty Ltd	Cleaning Chemicals	422.24
1988.551-01	30-Nov-16	Brownes Foods Operation Pty Ltd	Refreshments	69.41
1988.560-01	30-Nov-16	Plantech Grounds Maintenance	Garden Maintenance	1,318.57
1988.568-01	30-Nov-16	Prosser Toyota	Parts	62.55
1988.570-01	30-Nov-16	Pure Air Filters	Parts	375.05
1988.57-01	30-Nov-16	Armadale Hardware & Building Supplies	Hardware	2,044.00
1988.572-01	30-Nov-16	Quick Corporate Australia Pty Ltd	Stationery	7,867.16
1988.583-01	30-Nov-16	Range Ford	Parts	289.64
1988.606-01	30-Nov-16	Sage Consulting Engineers Pty Ltd	Consultancy Services	3,850.00
1988.62-01	30-Nov-16	Armadale Mower World	Parts	190.00
1988.630-01	30-Nov-16	Daimler Trucks Perth	2 x Fuso Canter's	198,484.00
1988.64-01	30-Nov-16	Armadale Party Hire & Fancy Dress	Hire of Equipment	638.00
1988.655-01	30-Nov-16	Cr James Stewart	Councillors Allowances	43.95
1988.659-01	30-Nov-16	Sunny Industrial Brushware	Hardware	306.70
1988.660-01	30-Nov-16	Sunny Sign Company Pty Ltd	Street Signs	13,088.63

Accounts Paid and Submitted to City Strategy Committee Held on 12 December 2016

Cheque or EFT No.	Date	Payee	Description	Amount
1988.669-01	30-Nov-16	Telstra	Telephone Charges	19.25
1988.670-01	30-Nov-16	Termico Pest Management	Weed & Pest Control	3,438.00
1988.672-01	30-Nov-16	The Chair Doctor WA Pty Ltd	Repairs	198.00
1988.690-01	30-Nov-16	Toll Fast	Courier Services	54.22
1988.692-01	30-Nov-16	Total Eden Pty Ltd	Reticulation Parts	15,250.03
1988.737-01	30-Nov-16	Wacker Neuson Pty Ltd	Parts-Variou Plant	1,012.00
1988.744-01	30-Nov-16	Water Corporation	Water Charges	609.87
1988.745-01	30-Nov-16	Wattleup Tractors	Parts-Variou Plant	1,427.20
1988.748-01	30-Nov-16	Wembley Cement Industries	Concrete Products	1,203.49
1988.75-01	30-Nov-16	Armaguard	Armaguard Services	3,844.49
1988.754-01	30-Nov-16	Westbooks	Library Resources	331.36
1988.759-01	30-Nov-16	Synergy Energy	Electricity Charges	1,154.80
1988.780-01	30-Nov-16	Work Clobber	Protective Clothing	303.30
1988.785-01	30-Nov-16	Wurth Australia Pty Ltd	Parts	430.68
1988.814-01	30-Nov-16	Gecko Contracting Turf & Landscaping	Garden Maintenance	2,997.50
1988.870-01	30-Nov-16	Red Sand Supplies Pty Ltd	Concrete Recycling-October 2016	2,368.30
1988.904-01	30-Nov-16	Bunnings Building Supplies Pty Ltd	Hardware	1,961.17
1988.924-01	30-Nov-16	E & M J Roshier Pty Ltd	Parts-Variou Plant	3,599.70
00005778	02-Nov-16	J Collier	Refund Security Deposit	400.00
00005779	02-Nov-16	City of Armadale	Refund Security Deposit	400.00
00005780	02-Nov-16	City of Armadale	Forfeiture of Security Deposit	308.00
00005781	08-Nov-16	Forrestdale Development Nominees No 2	Part Forfeiture of Security Deposit	85,308.97
00005782	08-Nov-16	AAA Demolition & Tree Services	Refund Security Deposit	400.00
00005783	08-Nov-16	H Lloyd	Refund Security Deposit	400.00
00005784	08-Nov-16	Shelford Constructions Pty Ltd	Refund Security Deposit	400.00
00005785	08-Nov-16	Dykstra Projects	Refund Security Deposit	15,300.00
00005786	11-Nov-16	BM & MT Wyles	Refund Security Deposit	400.00
00005787	11-Nov-16	Amano Homes	Refund Security Deposit	400.00
00005788	11-Nov-16	J R West	Refund Security Deposit	400.00
00005789	11-Nov-16	A S Bosich	Refund Security Deposit	400.00
00005790	11-Nov-16	LR Smith	Refund Security Deposit	400.00
00005791	11-Nov-16	RB Hamlin	Refund Security Deposit	400.00
00005792	11-Nov-16	CL & CP Schryver	Refund Security Deposit	400.00
00005793	11-Nov-16	Amano Homes	Refund Security Deposit	400.00
00005794	11-Nov-16	A R Clark	Refund Security Deposit	400.00
00005795	11-Nov-16	Auscon Builders	Refund Security Deposit	400.00
00005796	11-Nov-16	Brajjkovich Demolition & Salvage (WA)	Refund Security Deposit	401.89

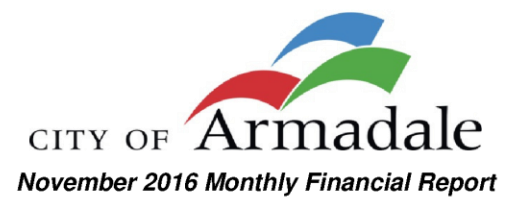
Accounts Paid and Submitted to City Strategy Committee Held on 12 December 2016

Cheque or EFT No.	Date	Payee	Description	Amount
00005797	11-Nov-16	Bell Construction & Design Pty Ltd	Refund Security Deposit	400.00
00005798	11-Nov-16	Housing Authority - Land & Housing	Refund Security Deposit	9,595.00
00005799	11-Nov-16	V Bosich	Refund Security Deposit	1,000.00
00005800	11-Nov-16	N Blackwell	Refund Security Deposit	500.00
00005801	11-Nov-16	C Jackson	Refund Security Deposit	1,000.00
00005802	11-Nov-16	T L Britton	Refund Security Deposit	1,000.00
00005803	11-Nov-16	D A Leonard	Refund Security Deposit	500.00
00005804	11-Nov-16	O B Masnor	Refund Security Deposit	500.00
00005805	11-Nov-16	Clifton Hills Primary School P&C	Refund Security Deposit	500.00
00005806	11-Nov-16	A Kyaw	Refund Hall/Key Deposit	1,000.00
00005807	11-Nov-16	V Anbazhagan	Refund Hall/Key Deposit	500.00
00005808	11-Nov-16	R Neale	Refund Hall/Key Deposit	1,000.00
00005809	15-Nov-16	City of Armadale	Forfeiture of Security Deposit	400.00
00005810	15-Nov-16	Simsai Construction Group Pty Ltd	Refund Security Deposit	400.00
00005811	15-Nov-16	R C Richards	Refund Hall/Key Deposit	500.00
00005812	15-Nov-16	R R Krishnadass	Refund Hall/Key Deposit	500.00
00005813	17-Nov-16	City of Armadale	Rebank Hall/Key Deposit Cheque Not Presented	100.00
00005814	17-Nov-16	PG Grzelec	Refund Security Deposit	400.00
00005815	17-Nov-16	Wesleyan Methodist Church	Refund Hall/Key Deposit	300.00
00005816	22-Nov-16	J K Kandivil	Refund Hall/Key Deposit	1,000.00
00005817	22-Nov-16	P D Kocnim Chui	Refund Hall/Key Deposit	1,000.00
00005818	22-Nov-16	T Buti	Refund Hall/Key Deposit	500.00
00005819	22-Nov-16	K J Western	Refund Hall/Key Deposit	886.25
00005820	22-Nov-16	City of Armadale	Part Forfeiture of Security Bond	113.75
00005821	22-Nov-16	B J Perrella	Refund Hall/Key Deposit	1,000.00
00005822	22-Nov-16	City of Armadale	Forfeiture of Security Deposit	500.00
00005823	22-Nov-16	J Hansen	Refund Hall/Key Deposit	275.00
00005824	22-Nov-16	City of Armadale	Part Forfeiture of Hall/Key Deposit	225.00
00005825	22-Nov-16	T McCain	Refund Hall/Key Deposit	100.00
00005826	22-Nov-16	Y J R M Mickalad	Refund Security Deposit	400.00
00005827	24-Nov-16	L Dean	Refund Hall/Key Deposit	1,000.00
00005828	24-Nov-16	Animal Protection Society Inc	Refund Hall/Key Deposit	1,000.00
00005829	24-Nov-16	M Williams-Ayo	Refund Hall/Key Deposit	1,000.00
00005830	24-Nov-16	A Burridge	Refund Hall/Key Deposit	1,000.00
00005831	24-Nov-16	S Mahar	Refund Hall/Key Deposit	1,000.00
00005832	24-Nov-16	Perth Trail Series	Refund Hall/Key Deposit	100.00
00005833	24-Nov-16	S Craven	Refund Hall/Key Deposit	1,000.00

Accounts Paid and Submitted to City Strategy Committee Held on 12 December 2016

Cheque or EFT No.	Date	Payee	Description	Amount
00005834	24-Nov-16	P Nair	Refund Hall/Key Deposit	200.00
00005835	24-Nov-16	M L French	Refund Hall/Key Deposit	1,000.00
00005836	24-Nov-16	W Miller	Refund Hall/Key Deposit	200.00
00005837	24-Nov-16	Civil Technology	Refund Security Deposit	18,599.64
00005838	24-Nov-16	C P Grogan	Refund Security Deposit	4,372.50
00005839	24-Nov-16	L J Longman	Refund Security Deposit	400.00
00005840	24-Nov-16	S A Claessen	Refund Security Deposit	200.95
00005841	24-Nov-16	KL Mwambanga	Refund Security Deposit	400.00
00005842	25-Nov-16	City of Armadale	Refund Hall/Key Bond	300.00
00005843	25-Nov-16	D B Teasdale	Refund Security Deposit	400.00
00005844	25-Nov-16	C G Hau	Refund Security Deposit	400.00
00005845	29-Nov-16	McDonalds Australia	Refund Hall/Key Deposit	500.00
00005846	30-Nov-16	Affordable Living Homes	Refund Security Deposit	400.00
00005847	30-Nov-16	Red Ink Homes Pty Ltd	Refund Security Deposit	800.00
1987.1115-01	30-Nov-16	J Corp Pty Ltd - Impressions	Refund Security Deposit	400.00
1987.1904-01	30-Nov-16	Blueprint Homes (WA) Pty Ltd	Refund Security Deposit	2,400.00
1987.1906-01	30-Nov-16	Ashmy Pty Ltd	Refund Security Deposit	2,400.00
1987.2057-01	30-Nov-16	Ventura Home Group Pty Ltd	Refund Security Deposit	14,000.00
1987.2075-01	30-Nov-16	Plunkett Homes (1903) Pty Ltd	Refund Security Deposit	92.00
1987.2076-01	30-Nov-16	Content Living Pty Ltd	Part Refund Security Bond	4,400.00
1987.2111-01	30-Nov-16	BGC Residential Pty Ltd	Refund Security Deposit	6,001.89
1987.2485-01	30-Nov-16	Tangent Nominees Pty Ltd	Refund Security Deposit	3,400.00
1987.2576-01	30-Nov-16	J Corp Pty Ltd - Homestart	Refund Security Deposit	9,200.00
1987.2671-01	30-Nov-16	Tangent Nominees Pty Ltd T/As Summit Homes Group	Refund Security Deposit	400.00
1987.3673-01	30-Nov-16	Home Group WA Pty Ltd	Refund Security Deposit	2,000.00
1987.4946-01	30-Nov-16	Aveling Homes Pty Ltd	Refund Security Deposit	400.00
1987.5054-01	30-Nov-16	Pure Homes Pty Ltd	Refund Security Deposit	400.00
PY01-10	09-Nov-16	City of Armadale Municipal Fund	Pavroll Deductions	896,110.25
PY01-11	23-Nov-16	City of Armadale Municipal Fund	Pavroll Deductions	905,499.02
				11,432,800.92

Pursuant to Regulation 13(4) of the Local Government (Financial Management) Regulations, the total of all other outstanding accounts for payment as at the date of this cheque listing being prepared is (\$5,186,178.12)





Statement of Financial Activity
For the period 1 July 2016 to 30 November 2016

Contents

Statement of Financial Activity	3
Notes to the Statement of Financial Activity	6
Net Current Asset Position	10
Notes to the Net Current Asset Position	11
Investments	14
Reserve Accounts	16
Trust Accounts	19



Statement of Financial Activity
For the period 1 July 2016 to 30 November 2016

Particulars	2016/17	30 November 2016		Material Variance
	Revised Budget	YTD Budget	YTD Actual	
	\$	\$	\$	
Revenue				
Chief Executive's Office				
Chief Executive Officer	3,600	1,400	-	
Economic Development	43,600	18,000	33,590	
City Projects	10,290,100	45,020	-	
Human Resources	5,000	2,000	1,640	
Community Services				
Community Development	419,200	174,870	176,610	
Recreation Services	1,506,330	466,500	474,020	
Libraries and Heritage	120,400	61,900	60,930	
Rangers and Emergency	730,300	480,700	486,300	
Corporate Services				
Budgeting	179,601	53,000	73,170	
Corporate Funds	67,948,489	58,669,380	58,649,460	
Finance	1,023,700	687,500	693,080	
Governance and Administration	3,500	1,200	1,640	
Development Services				
Building	1,276,400	565,200	573,140	
Health	136,000	57,550	70,080	
Planning	641,900	299,600	294,130	
Project Co-ordination	9,630,860	3,248,000	3,247,500	
Technical Services				
Civil Works	16,634,235	2,971,940	2,954,700	
Environment Planning	557,790	72,790	64,070	
Parks	544,000	175,500	176,050	
Property	1,512,800	1,200	2,660	
Subdivisions	400,000	86,000	89,750	
Technical Services	279,800	80,400	73,500	
Waste	13,805,850	12,807,500	12,802,330	
Total Revenue	127,693,455	81,745,150	81,007,410	



Statement of Financial Activity
For the period 1 July 2016 to 30 November 2016

Particulars	2016/17	30 November 2016		Material Variance
	Revised Budget	YTD Budget	YTD Actual	
	\$	\$	\$	
Operating Expense				
Chief Executive's Office				
Chief Executive Officer	(2,159,040)	(824,250)	(809,750)	
Economic Development	(1,017,250)	(434,600)	(425,540)	
City Projects	(487,470)	(132,750)	(96,920)	
Human Resources	(1,651,420)	(801,500)	(777,920)	
Public Relations	(859,900)	(301,080)	(283,830)	
Community Services				
Community Development	(4,075,190)	(1,348,500)	(1,324,050)	
Community Services	(455,770)	(202,900)	(192,330)	
Recreation Services	(2,756,490)	(1,062,400)	(1,041,490)	
Libraries and Heritage	(3,228,640)	(1,332,300)	(1,306,520)	
Rangers and Emergency	(2,290,140)	(966,050)	(947,360)	
Corporate Services				
Budgeting	(17,315,694)	(7,277,200)	(7,256,820)	
Corporate Funds	(1,225,000)	(587,500)	(532,870)	
Corporate Services	(969,190)	(285,090)	(271,850)	
Finance	(2,257,470)	(744,900)	(734,000)	
Governance and Administration	(2,587,940)	(1,078,510)	(1,081,980)	
IT Services	(4,163,540)	(1,823,020)	(1,867,110)	
Development Services				
Building	(1,940,500)	(715,600)	(713,690)	
Development Services	(565,930)	(235,500)	(209,990)	
Health	(1,356,920)	(586,750)	(526,080)	
Planning	(3,768,560)	(1,155,800)	(1,139,210)	
Project Co-ordination	(8,786,860)	(1,100,950)	(1,087,280)	
Technical Services				
Asset Management	(1,154,540)	(352,600)	(365,210)	
Civil Works	(4,425,600)	(1,851,000)	(1,872,170)	
Engineering Design	(894,900)	(466,000)	(473,100)	
Environment Planning	(2,034,380)	(659,430)	(681,850)	
Parks	(8,509,700)	(3,349,840)	(3,289,190)	
Project Management	(132,780)	(55,500)	(56,750)	
Property	(5,056,700)	(2,048,000)	(1,978,160)	
Subdivisions	(927,530)	(386,400)	(399,350)	
Depot	70,000	(270,200)	(186,270)	
Technical Services	(3,822,850)	(1,305,410)	(1,255,680)	
Waste	(12,478,974)	(4,002,250)	(3,959,810)	
Total Operating Expense	(103,286,868)	(37,743,780)	(37,144,130)	



Statement of Financial Activity
For the period 1 July 2016 to 30 November 2016

Particulars	2016/17	30 November 2016		Material Variance
	Revised Budget	YTD Budget	YTD Actual	
	\$	\$	\$	
Non-Operating Revenue				
Corporate Services				
Corporate Funds	14,935,385	520,280	539,000	
Technical Services				
Depot	1,326,230	353,000	336,860	
Total Non-Operating Revenue	16,261,615	873,280	875,860	
Capital Expense				
Chief Executive's Office				
City Projects	(16,643,100)	(2,505,200)	(2,473,690)	
Corporate Services				
IT Services	(1,340,000)	(45,000)	(44,910)	
Governance and Administration	-	-	-	
Development Services				
Health	(1,200)	-	-	
Planning	(1,500)	-	-	
Project Co-ordination	(844,000)	(1,049,500)	(1,050,250)	
Development Services	(500)	-	-	
Technical Services				
Civil Works	(22,264,415)	(4,369,320)	(4,305,050)	
Engineering Design	(800,600)	-	-	
Parks	(7,033,790)	(1,380,130)	(1,294,490)	
Property	(5,526,790)	(639,610)	(618,020)	
Depot	(5,428,400)	(1,446,610)	(1,438,260)	
Waste	(1,540,000)	(504,600)	(503,710)	
Total Capital Expense	(61,424,295)	(11,939,970)	(11,728,380)	
Non-Operating Expense				
Corporate Services				
Corporate Funds	(7,815,814)	(77,400)	(5,370)	
Total Non-Operating Expense	(7,815,814)	(77,400)	(5,370)	
Total Operating Result	(28,571,907)	32,857,280	33,005,390	
Adjustments				
Profit and Loss	(87,711)	53,000	66,233	
Depreciation	17,223,804	7,277,200	7,249,880	
Total Adjustments	17,136,093	7,330,200	7,316,113	
Suspense Items Yet To Be Applied	-	-	4,793,967	
Opening Surplus / (Deficit)	11,435,814	11,435,814	11,435,814	
Closing Surplus / (Deficit)	(0)	51,623,294	56,551,284	



Notes to the Statement of Financial Activity
For the period 1 July 2016 to 30 November 2016

1 Statement of Objective

In order to discharge its financial responsibilities to the community, the City has developed a set of operational and financial objectives. The objectives have been established both on an overall basis, reflected by the City's Vision Statement, and for each of its broad activities / programs.

Our Mission and Values

To provide the leadership, facilities and infrastructure that will serve the needs of our local and wider communities. We value Honesty, Professionalism, Respect and Accountability.

Council operations, as disclosed in this report, encompass the following service oriented management units:

Chief Executive Officer

Includes the administration of the Chief Executive's Office and the Members of Council areas, including core organisational services, leadership and strategic direction. Overseen by the Chief Executive Officer.

City Projects

Includes concept development, design, funding and delivery of major strategic projects for the City. Overseen by the Director of City Projects.

Human Resources

Includes the administration and co-ordination of all corporate Human Resource related matters, including corporate training, occupational safety and health advisement, and staff recruitment. Overseen by the Human Resources Manager.

Public Relations

Includes all facets of corporate marketing and promotion, including newsletters, media releases, corporate image development and marketing plans. Overseen by the Manager of Communications.

Community Development

Includes planning, assisting and supporting the development of programs, activities and strategies in relation to youth, seniors, access and inclusion, indigenous support, family and children, community partnerships, arts and events, volunteering, financial assistance and community infrastructure planning. Overseen by the Executive Manager of Community Services.

Community Services

Includes the administration of the Executive Director of Community Services' Office, including specialist projects relating to the Community Services Directorate. Overseen by the Executive Director of Community Services.

Recreation Services

Includes the management of the Armadale Arena and Armadale Aquatic Centre and is responsible for the management, usage and co-ordination of the City's community and sporting facilities and reserves. Overseen by the Manager of Leisure Services.

Libraries and Heritage

Includes the management, development and operations of the City's Libraries, Museums, and the Armadale Visitor Centre. Overseen by the Manager of Libraries and Heritage Services.

Rangers and Emergency

Includes the administration and operation of fire prevention services, animal control, volunteer emergency service groups, the control of off-road vehicles, enforcement of local laws and vehicle impoundment. Overseen by the Manager of Ranger and Emergency Services.

Budgeting

Includes the administration of non-cash expenditure and revenue associated with local government accounting requirements, including profit and loss and depreciation. Overseen by the Co-ordinator of Accounting Services.

Corporate Funds

Includes loans, reserves funds, restricted funds, leasing revenue, rate revenue and corporate grant funding. Overseen by the Corporate Services Directorate.



Notes to the Statement of Financial Activity
For the period 1 July 2016 to 30 November 2016

1 Statement of Objective (continued)

Corporate Services

Includes the administration of the Executive Director of Corporate Services' Office, including specialist projects relating to the Corporate Services Directorate. Overseen by the Executive Director of Corporate Services.

Budgeting

Includes the administration of non-cash expenditure and revenue associated with local government accounting requirements, including profit and loss and depreciation. Overseen by the Co-ordinator of Accounting Services.

Finance

Includes the administration and operation of all corporate finance related matters, including cash receipting, billing, investment of funds, payment of creditors, and the corporate finance systems. Overseen by the Manager of Financial Services.

Governance and Administration

Includes the provision of governance services, such as preparation of policy documents, statutory reviews and the maintenance of statutory registers. The area also includes the administration of the corporate office requirements, including reception, record keeping, photocopying, stationery, and insurance related matters. Overseen by the Manager of Governance and Administration.

IT Services

Includes the provision, operation and maintenance of the corporate computer systems, including software management, hardware management, printing and consumables and telephones and communication networks. Overseen by the Manager of Information and Communication Technology Services.

Rates

Includes the administration, and maintenance, of rate records and rating valuations. Overseen by the Co-ordinator of Rating Services.

Building

Includes the administration, inspection and operations concerned with application of building standards, including the examination, processing and inspection of buildings, building sites and swimming pools. Overseen by the Building Services Manager.

Development Services

Includes the administration of the Executive Director of Development Services' Office, including specialist projects relating to the Development Services Directorate. Overseen by the Executive Director of Development Services.

Environment Planning

Includes the administration, inspection and operation of environmental concerns including flood mitigation works, river bank restoration, bush land redevelopment, water catchment maintenance and soil and air conservation. Overseen by the Senior Environmental Planner.

Health

Includes the administration, inspection and operations of programs concerned with the general health of the community and includes the provision of immunisation programs, inspection and licencing of food premises and conducting preventative service programs. Overseen by the Health Services Manager.

Planning

Includes the administration, inspection and operation of town planning and regional development services including the preparation of town planning development schemes, zoning considerations and maintenance of geographic information systems (GIS). Overseen by the Planning Services Manager.

Project Co-ordination

Includes the administration and application of major planning projects, currently the North Forrestdale Developer Contribution Scheme. Overseen by the Project Co-ordinator.

Asset Management

Includes the monitoring and recording of Council's assets, including infrastructure, and the development of plans for their maintenance and renewal. Overseen by the Asset Management Co-ordinator.



Notes to the Statement of Financial Activity
For the period 1 July 2016 to 30 November 2016

1 Statement of Objective (continued)

Civil Works

Includes the administration, regulation, maintenance and construction associated with the provision of streets, roads, bridges, pathways, drainage, and associated components, under the control of the City. Overseen by the Manager of Civil Works.

Engineering Design

Includes the engineering analysis and associated design of Council works, generally associated with Civil Works, Parks and Subdivisions. Overseen by the Manager of Engineering and Design.

Project Management

Includes the planning associated with new infrastructure assets, including those relating to the Civil Works and Subdivision areas. Overseen by the Manager of Technical Services.

Parks

Includes the maintenance and construction associated with the provision of recreation grounds, parks, garden, streetscapes, road verges and roundabouts. Overseen by the Manager of Parks.

Property

Includes the provision and maintenance of Council's built assets such as community facilities, sporting clubs and pavilions, public halls and centres, administration centres, and emergency service facilities. Overseen by the Manager of Property Services.

Subdivisions

Includes the planning and engineering requirements associated with new subdivisions. Overseen by the Subdivision Engineer.

Support

Includes the maintenance and provision of the works depot, machinery and equipment of the City, and inventory such as fuel, oil and road construction materials. Overseen by the Co-ordinator of Support Services.

Technical Services

Includes the administration of the Executive Director of Technical Services' Office, including specialist projects relating to the Technical Services Directorate. Overseen by the Executive Director of Technical Services.

Waste

Includes the administration and operation of refuse collection and disposal services, including general, recyclable and green waste collection services and associated waste disposal sites. Overseen by the Co-ordinator of Waste Services.

2 Material Variances Explanation

For the purposes of reporting the material variances, the following indicators, as resolved, have been applied:

Revenues - Material variances will be identified where, for the period being reported, the actual varies to budget by an amount of (+) or (-) \$100,000 and in these instances and explanatory comment will be provided.

Expenses - Material variances will be identified where, for the period being reported, the actual varies to budget by an amount of (+) or (-) \$100,000 and in these instances and explanatory comment will be provided.

Before commenting on each of the specific material variances identified for review, it is important to note that, whilst many accounts will influence the overall variance, only those accounts within the affected management unit significantly contributing to the variance will be highlighted.

For the purposes of explaining each Material Variance, a three part approach has been taken. The parts are:

1 Period Variation - Relates specifically to the value of the Variance between the Budget and Actual figures for the period of the report.

2 Primary Reason - Explains the primary reasons for the period variance. As the report is aimed at a higher level analysis, only major contributing factors are reported.

3 Budget Impact - Forecasts the likely \$ impact on the year end surplus or deficit position. It is important to note that figures in this part are 'indicative only' at the time of reporting, for circumstances may subsequently change.



Notes to the Statement of Financial Activity
For the period 1 July 2016 to 30 November 2016

2 Material Variances Explanation

No material variances to report for the period ended 30 November 2016.



Notes to the Statement of Financial Activity
For the period 1 July 2016 to 30 November 2016

Particulars	Note	Brought Forward 1 July \$	2016/17 Revised Budget \$	30 November 2016 YTD Actual \$
Current Assets				
Cash - Unrestricted	1	17,114,143	14,160,782	35,249,220
Cash - Reserves	2	80,858,321	81,412,035	80,858,321
Receivables and Accruals	3	7,074,641	2,255,000	30,680,040
Assets Held for Sale		1,572,000	-	-
Inventories	4	184,251	180,000	149,560
		106,803,356	98,007,817	146,937,141
Less Current Liabilities				
Creditors and Accruals	5	(8,258,333)	(16,595,782)	(9,148,590)
Interest Bearing Liabilities	6	(1,887,962)	(1,890,500)	(1,887,964)
Provisions	7	(7,270,533)	(7,706,902)	(7,270,530)
		(17,416,828)	(26,193,184)	(18,307,084)
Net Current Asset Position (Prior to Adjustment)		89,386,528	71,814,633	128,630,057
Adjustments				
Subtractions				
Reserves		(80,858,321)	(81,412,035)	(80,858,321)
Restricted - Rates in Advance / Specified Area Rates		(4,678,888)	-	(378,946)
Assets Held for Sale		(1,572,000)	-	-
Additions				
Interest Bearing Liabilities		1,887,962	1,890,500	1,887,964
Employee Reserve Cash Backed		7,270,533	7,706,902	7,270,530
Net Position		11,435,814	-	56,551,284



Notes to the Statement of Financial Activity
For the period 1 July 2016 to 30 November 2016

Note	Brought Forward 1 July \$	2016/17 Revised Budget \$	30 November 2016 YTD Actual \$
1 Cash - Unrestricted			
Cash at Bank	698,279	14,150,782	1,239,050
Cash in Investments	11,405,954	-	22,000,000
Cash in 11am Accounts	5,000,000	-	12,000,000
Cash on Hand	9,910	10,000	10,510
	17,114,143	14,160,782	35,249,220
2 Cash - Reserves			
Cash at Bank	8,858,321	8,858,321	58,321
Cash in Investments	70,000,000	70,553,714	80,000,000
Cash in 11am Accounts	2,000,000	2,000,000	800,000
	80,858,321	81,412,035	80,858,321
3 Receivables and Accruals			
Prepayments	(891)	1,000	-
Accrued Revenue	2,846,653	50,000	1,329,190
Debtors - Rates	1,134,219	850,000	22,278,620
Debtors - Sanitation (Rates)	124,318	110,000	441,520
Debtors - Swimming Pool Inspection Levy	1,049	500	3,520
Debtors - Instalment Fees and Charges	549	500	19,310
Debtors - ESL (Rates)	51,493	40,000	296,270
Debtors - ESL Interest	4,258	2,000	5,870
Debtors - Rebate Generated (Rates)	3,106,182	3,100,000	3,177,840
Debtors - Rebate Claimed (Rates)	(3,106,182)	(3,100,000)	(1,304,360)
Debtors - Rebate Generated (ESL)	449,300	450,000	482,800
Debtors - Rebate Claimed (ESL)	(449,300)	(450,000)	(445,320)
Debtors - General	1,704,174	780,000	3,387,280
Debtors - Employees	1,126	1,000	(50)
Debtors - Libraries	13	-	100
Debtors - Rangers (Legacy)	151,587	76,000	165,750
Debtors - Fire	20,030	20,000	18,060
Debtors - Animals	190,385	150,000	192,920
Debtors - Parking	119,393	80,000	127,390
Debtors - Litter	90,502	80,000	103,950
Debtors - Off Road Vehicles	1,332	1,000	1,110
Debtors - Health	2,974	2,000	2,670
Debtors - Goods and Services Tax	329,616	-	461,980
Debtors - Thoroughfares	8,951	7,000	7,250
Debtors - Unauthorised Signs	7,558	6,000	6,160
Debtors - Planning	42,250	38,000	39,800
Debtors - Cats	2,350	2,000	2,790
Debtors - GST Refund	363,131	80,000	-
Doubtful Debts Provision	(122,378)	(122,000)	(122,380)
	7,074,641	2,255,000	30,680,040
4 Inventories			
Depot Stock	184,251	180,000	149,560
	184,251	180,000	149,560



Notes to the Statement of Financial Activity
For the period 1 July 2016 to 30 November 2016

Note	Brought Forward 1 July \$	2016/17 Revised Budget \$	30 November 2016 YTD Actual \$
5 Creditors and Accruals			
Goods and Services Tax	-	(80,000)	-
Trade Creditors	(7,215,770)	(16,100,782)	(5,186,180)
Purchase Order Commitment	(15,751)	(100,000)	(75,780)
GST Commitment	1,209	5,000	6,670
Payroll Equalisation	(40,563)	(100,000)	(34,230)
Deferred Salary Arrangements	(53,391)	(200,000)	(32,710)
Salaries and Wages	(730,967)	-	-
Loan Interest	(32,624)	-	(32,620)
Accrued Expenses	(22,178)	(20,000)	-
Revenue in Advance	(15,908)	-	-
Rates in Advance	-	-	(381,890)
ESL Raised	(13,610,264)	(13,500,000)	(21,680,160)
ESL Remitted	13,477,872	13,500,000	18,311,030
Payroll Deductions	-	-	(42,720)
	(8,258,333)	(16,595,782)	(9,148,590)



Notes to the Statement of Financial Activity
For the period 1 July 2016 to 30 November 2016

Note	Brought Forward 1 July \$	2016/17 Revised Budget \$	30 November 2016 YTD Actual \$
6 Interest Bearing Liabilities			
Loan 290 - ARA Projects 2008	(27,143)	(27,100)	(27,143)
Loan 291 - Aquatic Works 2008	(20,671)	(20,700)	(20,671)
Loan 292 - Loan Borrowings 2008	(36,830)	(36,800)	(36,830)
Loan 294 - Armadale Library Relocation 2009	(118,171)	(118,200)	(118,171)
Loan 295 - Old Library Conversion 2009	(75,199)	(75,200)	(75,199)
Loan 296 - Loan Borrowings 2009	(34,502)	(34,500)	(34,502)
Loan 298 - Loan Borrowings 2010	(59,085)	(59,100)	(59,085)
Loan 299 - Aquatic Centre Upgrade 2010	(58,686)	(58,700)	(58,686)
Loan 300 - Frye Park Redevelopment 2010	(49,417)	(49,400)	(49,417)
Loan 302 - Aquatic Centre Upgrade 2011	(51,593)	(51,600)	(51,593)
Loan 303 - Bakers House Refurbishment 2011	(34,921)	(34,900)	(34,921)
Loan 304 - Frye Park Redevelopment 2011	(38,496)	(38,500)	(38,496)
Loan 305 - Piara Waters (North) 2011	(66,634)	(66,600)	(66,634)
Loan 306 - Loan Borrowings 2011	(68,423)	(68,400)	(68,423)
Loan 307 - Equestrian Club Facilities 2012	(77,213)	(77,200)	(77,213)
Loan 311 - Aquatic Centre Upgrade 2012	(60,699)	(60,700)	(60,699)
Loan 314 - Oval Lighting Renewal	(79,402)	(79,400)	(79,402)
Loan 316 - Landmark Building 2014	(118,354)	(118,400)	(118,354)
Loan 317 - Abbey Road Project 2014	(269,745)	(269,700)	(269,745)
Loan 318 - Orchard House 2015	(408,812)	(408,800)	(408,812)
Loan 321 - Armadale Arena Roofing 2015	(71,462)	(71,500)	(71,462)
Loan 322 - Kelmscott Library	(62,506)	(65,100)	(62,506)
	(1,887,962)	(1,890,500)	(1,887,964)
7 Provisions - Current			
Annual Leave	(3,843,710)	(3,829,954)	(3,843,710)
Long Service Leave	(3,426,823)	(3,876,948)	(3,426,820)
	(7,270,533)	(7,706,902)	(7,270,530)



Investments
For the period 1 July 2016 to 30 November 2016

Investments

Council's objective is to maximise the return on cash and investments whilst maintaining an adequate level of liquidity and preserving capital. Council has an investment policy and this policy is subject to review. The Finance team manages the cash and investments portfolio with the assistance of relevant external bodies (when and where applicable).

Investments Maturing November 2016

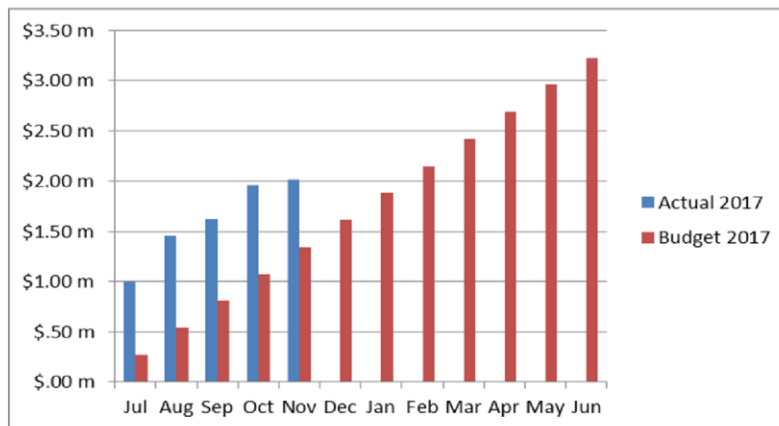
Investment Date	Identification	Form	Institution	Original Investment \$	Interest Rate %	Maturity Date	Interest Earnings \$
<u>Municipal Fund</u>							
Continuous		NG 11 am	WESTPAC	Various	Various	Continuous	14,301
24 Nov 15	191	GTD	PEOPLE'S CHOICE	2,000,000	2.74	23 Nov 16	54,800
<u>Trust Fund</u>							
Continuous		NG 11 am	WESTPAC	Various	Various	Continuous	3,575
<u>Reserve Account</u>							
Continuous		NG 11 am	WESTPAC	Various	Various	Continuous	921

Total Period Earnings	73,597
Total Interest Earned YTD	2,012,800
Total Budget YTD	1,343,792
Total Budget	3,225,100

Form Legend

G 11 am	Green On-call Bank Account	GTD	Green Term Deposit
NG 11 am	Non Green On-call Bank Account	NGTD	Non Green Term Deposit

Investment Interest Earnings



Current Investment Portfolio Spread

Green Bank	62,000,000	54%
Non-Green Bank	52,800,000	46%
Total Current Investments	114,800,000	



Investments
For the period 1 July 2016 to 30 November 2016

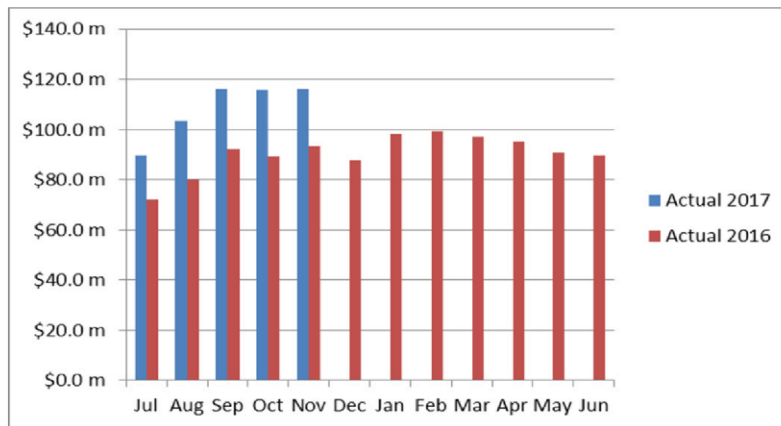
Investments Commenced November 2016

Investment Date	Identification	Form	Institution	Original Investment \$	Interest Rate %	Maturity Date	Projected Earnings \$
<u>Municipal Fund</u> 23-Nov-16	250	NGTD	NAB	2,000,000	2.68	21 Feb 17	13,216
Total Projected Period Earnings							13,216

Indicative Benchmark	30 Days	90 Days	180 Days	365 Days
BBSW Bank Bill Swap Rate	1.62%	1.77%	2.01%	1.79%

All investments have been made in accordance with legislative requirements and Council's policies and strategies.

Total Cash Holdings (excluding Trust)





Reserve Accounts

Where Council wishes to set aside money for use for a purpose in a future financial year, it is to establish and maintain a reserve account for each such purpose. Any change to the purpose of reserve accounts requires an absolute majority vote by Council and may require local public notice.

Reserve Accounts Definitions

Asset Renewal - Buildings

To be used to assist in funding capital works on buildings, thereby extending the useful economic life of such assets.

Asset Renewal - Parks

To be used to assist in funding capital works on parks, thereby extending the useful economic life of such assets.

Building Plant and Equipment

To be used to assist in the maintenance and replacement of plant and equipment associated with Council's buildings.

Champion Lakes Asset Renewal

To be used to assist in the renewal of assets associated with the Champion Lakes Estate.

Civic Precinct

To be used to assist in research, planning and redevelopment of the City's Civic Precinct.

Computer Systems Technologies

To be used to assist in funding the long-term renewal of Council's core computer systems.

Crossover Contributions

To be used in funding the construction of Crossovers as a condition of approved building licences.

Emergency Waste

To be used to assist with the costs associated with storm damage clean-up, collections and disposal.

Employee Provisions

To be used to cash-back the employees' annual and long-service leave entitlements liability.

Freehold Sales Capital Works

To be used to assist in funding capital works and to be funded from the proceeds (30% of net sale proceeds) of selling Freehold land parcels.

Future Community Facilities

To be used to assist in the research, planning and construction of future community facilities.

Future Project Funding

To be used to fund future projects considered in-excess of Council's normal funding capacity.

Future Recreation Facilities

To be used to assist in the research, planning and construction of future recreation facilities.

History of the District

To be used to assist in the future rewrite and publication of the History of the District.

Land Acquisition

To be used to assist in future acquisitions of land for Council investment or works requirement.

Mobile Bin Program

To be used to assist in the purchase and replacement of the City's mobile garbage bins.



Reserve Accounts
For the period 1 July 2016 to 30 November 2016

Reserve Accounts Definitions

North Forrestdale DCP 3

To be used to fund common infrastructure works as identified in the Development Contribution Plan #3.

North Forrestdale SAR Asset Renewal

To be used to assist in the renewal of assets associated with North Forrestdale Estates covered by Specified Area Rating.

Plant and Machinery

To be used to assist in the replacement of Council's plant and machinery requirements.

Portable Long Service Leave

To be used to assist in financing Council's portable long service leave liability.

Revolving Energy

To be used to assist in establishing energy efficient management techniques and practices.

Strategic Asset Investments

To be used to fund the acquisition of strategic asset investments from the proceeds (70% of net sale proceeds) of selling Freehold land parcels.

Waste Management

To be used to assist in the management and future provisioning of Council's waste management sites.

Workers Compensation

To be used to assist in covering any workers' compensation liability claims in-excess of Council's normal funding capacity.

Works Contributions

To be used to fund works utilising contributions received from developers, generally pursuant to conditions of development approval.



Reserve Accounts
For the period 1 July 2016 to 30 November 2016

Reserve Accounts Transactions

	1 July 2016 Opening Balance \$ '000's	Transfer to Reserve \$ '000's	Transfer from Reserve \$ '000's	31 November 2016		2016/17 Revised Budget \$ '000's
				YTD Actual \$ '000's	YTD Budget \$ '000's	
Asset Renewal - Buildings	(382)	-	-	(382)	-	(382)
Asset Renewal - Parks	(340)	-	-	(340)	-	(340)
Building Plant and Equipment	(148)	-	-	(148)	-	(148)
Champion Lakes SAR Asset Renew	(142)	-	-	(142)	-	(142)
Computer Systems Technologies	(352)	-	-	(352)	-	(352)
Crossover Contributions	(57)	-	-	(57)	-	(57)
Emergency Waste	(212)	-	-	(212)	-	(212)
Employee Provisions	(8,742)	-	-	(8,742)	-	(8,742)
Freehold Sales Capital Works	(139)	-	-	(139)	-	(139)
Future Community Facilities	(741)	-	-	(741)	-	(741)
Future Project Funding	(13,004)	-	-	(13,004)	-	(13,558)
Future Recreation Facilities	(274)	-	-	(274)	-	(274)
History of the District	(35)	-	-	(35)	-	(35)
Land Acquisition	(440)	-	-	(440)	-	(440)
Mobile Bin Program	(1,870)	-	-	(1,870)	-	(1,870)
North Forrestdale DCP 3	(39,191)	-	-	(39,191)	-	(39,191)
North Forrestdale SAR Asset Renew	(3,180)	-	-	(3,180)	-	(3,180)
Plant and Machinery	(2,881)	-	-	(2,881)	-	(2,881)
Portable Long Service Leave	(293)	-	-	(293)	-	(293)
Revolving Energy	(58)	-	-	(58)	-	(58)
Strategic Asset Investments	(103)	-	-	(103)	-	(103)
Waste Management	(7,338)	-	-	(7,338)	-	(7,338)
Workers Compensation	(330)	-	-	(330)	-	(330)
Works Contributions	(605)	-	-	(605)	-	(605)
	(80,858)	-	-	(80,858)	-	(81,412)



Trust Fund

A local government is to establish a Trust Fund to hold all money or the value of assets that are required by the Local Government Act or any other written law to be credited to that Fund. Money or other property held in the Trust Fund is to be applied for the purposes of, and in accordance with, the Trusts affecting it.

Trust Fund Account Definitions

Cash in Lieu - POS - A14 Plan

To be used to fund capital works associated with the development and redevelopment of Public Open Space areas in the vicinity of the A14 Structure Plan and to be funded by contributions received from developers pursuant to conditions of development approval.

Cash in Lieu - POS - Agreements

To be used to fund capital works associated with the development and redevelopment of Public Open Space areas in the vicinity of predefined areas covered by Legal Agreements and to be funded by contributions received from developers pursuant to conditions of development approval.

Cash in Lieu - POS - Heron

To be used to fund capital works associated with the development and redevelopment of Public Open Space areas in the vicinity of the Heron Ward and to be funded by contributions received from developers pursuant to conditions of development approval.

Cash in Lieu - POS - Jarrah

To be used to fund capital works associated with the development and redevelopment of Public Open Space areas in the vicinity of the Jarrah Ward and to be funded by contributions received from developers pursuant to conditions of development approval.

Cash in Lieu - POS - Lake

To be used to fund capital works associated with the development and redevelopment of Public Open Space areas in the vicinity of the Lake Ward and to be funded by contributions received from developers pursuant to conditions of development approval.

Cash in Lieu - POS - Minnowarra

To be used to fund capital works associated with the development and redevelopment of Public Open Space areas in the vicinity of the Minnowarra Ward and to be funded by contributions received from developers pursuant to conditions of development approval.

Cash in Lieu - POS - Neerigen

To be used to fund capital works associated with the development and redevelopment of Public Open Space areas in the vicinity of the Neerigen Ward and to be funded by contributions received from developers pursuant to conditions of development approval.

Cash in Lieu - POS - River

To be used to fund capital works associated with the development and redevelopment of Public Open Space areas in the vicinity of the River Ward and to be funded by contributions received from developers pursuant to conditions of development approval.

Cash in Lieu - POS - Strategy North

To be used to fund capital works associated with the development and redevelopment of Public Open Space areas in the vicinity of predefined areas covered by the Strategy North Plan and to be funded by contributions received from developers pursuant to conditions of development approval.

Cash in Lieu of Footpaths

To be used to develop pathways within the area of a subdivision that are not carried out as part of the initial subdivision works and are as per subdivision conditions.

Contractors Deposits

To be used to hold performance bonds levied as part of development and / or subdivision works conditions.



Trust Fund Account Definitions (continued)

Engineering Deposits

To be used to hold performance bonds levied as part of development and / or subdivision works conditions.

General Contributions

To be used to hold performance bonds levied as part of development and / or subdivision works conditions.

General Deposits

To be used to hold performance bonds levied as part of development and / or subdivision works conditions.

Hall and Key Deposits

To be used to hold performance bonds levied as part the hiring of Council facilities where damage may occur and / or keys may not be returned.

Kerb Deposits

To be used to hold performance bonds levied as part of the Building Application process pertaining to the possible kerb / footpath damage that may occur during any construction works.

Nomination Deposits

To be used to hold candidate nomination deposits received as part of the Council election process that are to be refunded upon the candidate successfully obtaining sufficient votes at the relevant election.

Other Deposits

To be used to hold various sporting club and library member deposits that occur from time-to-time.

Public Open Space - Precinct A - Westfield

To be used to fund capital works associated with the development and redevelopment of public open space areas within the Westfield precinct. Funds placed into this Trust account are generated via the sale of unrequired parcels of public open space land within the precinct.

Public Open Space - Precinct B - Seville Grove

To be used to fund capital works associated with the development and redevelopment of public open space areas within the Seville Grove precinct. Funds placed into this Trust account are generated via the sale of unrequired parcels of public open space land within the precinct.

Public Open Space - Precinct C - West Armadale

To be used to fund capital works associated with the development and redevelopment of public open space areas within the West Armadale precinct. Funds placed into this Trust account are generated via the sale of unrequired parcels of public open space land within the precinct.

Public Open Space - Precinct D - South Armadale

To be used to fund capital works associated with the development and redevelopment of public open space areas within the South Armadale precinct. Funds placed into this Trust account are generated via the sale of unrequired parcels of public open space land within the precinct.

Public Open Space - Precinct F - Clifton Hills

To be used to fund capital works associated with the development and redevelopment of public open space areas within the Clifton Hills precinct. Funds placed into this Trust account are generated via the sale of unrequired parcels of public open space land within the precinct.

Public Open Space - Precinct G - Creyk

To be used to fund capital works associated with the development and redevelopment of public open space areas within the Creyk precinct. Funds placed into this Trust account are generated via the sale of unrequired parcels of public open space land within the precinct.

Public Open Space - Precinct I - Roleystone

To be used to fund capital works associated with the development and redevelopment of public open space areas within the Roleystone precinct. Funds placed into this Trust account are generated via the sale of unrequired parcels of public open space land within the precinct.



Trust Fund Account Definitions

Public Open Space - Precinct M - Southern Bedfordale

To be used to fund capital works associated with the development and redevelopment of public open space areas within the Southern Bedfordale precinct. Funds placed into this Trust account are generated via the sale of unrequired parcels of public open space land within the precinct.

Public Open Space - Precinct O - Palomino

To be used to fund capital works associated with the development and redevelopment of public open space areas within the Palomino precinct. Funds placed into this Trust account are generated via the sale of unrequired parcels of public open space land within the precinct.

Public Open Space - Regional Recreation Infrastructure

To be used to fund capital works of a Regional Recreation Infrastructure nature and to be funded from the proceeds (30% of net sale proceeds) of selling Public Open Space land parcels identified as surplus to future requirements.

Rates in Suspense

To be used to hold rate receipts received via bank transfer for which no identification reference exists.

SEMACC Lease Liability

To be used to hold a bond for lease liability for the South East Metropolitan Area Consultative Committee.

Town Planning Bonds

To be used to hold bonds for Town Planning reimbursement associated with subdivisional roads.

Works Contributions

To be used to hold performance bonds levied as part of development and / or subdivision works conditions.



Trust Accounts
For the period 1 July 2016 to 30 November 2016

Trust Fund Account Transactions

	1 July 2016	30 November 2016	
	Opening	Net	Current
	\$ '000's	Movement	Balance
		\$ '000's	\$ '000's
Rates in Suspense	52	-	52
Town Planning Bonds	595	-	595
SEMACC Lease Liability	11	-	11
Cash in Lieu Parking	205	-	205
Cash in Lieu of Footpaths	399	19	418
POS - Precinct A - Westfield	343	-	343
POS - Precinct B - Seville Grove	35	-	35
POS - Precinct C - West Armadale	213	-	213
POS - Precinct E - Mount Richon	248	-	248
POS - Precinct F - Clifton Hills	680	-	680
POS - Precinct G - Creyk	480	-	480
POS - Precinct H - Mount Nasura	637	-	637
POS - Precinct O - Palomino	67	-	67
POS - Regional Recreation Infrastructure	3,330	209	3,539
Cash in Lieu - POS - A14 Plan	2,694	-	2,694
Cash in Lieu - POS - Jarrah	66	-	66
Cash in Lieu - POS - Minnowarra	9	-	9
Cash in Lieu - POS - Neerigen	493	-	493
Cash in Lieu - POS - River	19	-	19
Cash in Lieu - POS - Lake	664	58	722
Cash in Lieu - POS - Heron	148	-	148
Cash in Lieu - POS - Agreements	26	-	26
Contractors Deposits	7,062	(11)	7,050
Hall and Key Deposits	90	(4)	87
Kerb Deposits	1,687	(22)	1,666
Sexty Reserve Agreement	74	-	74
Cash in Lieu - POS Flematti Res 49251	235	-	235
Environmental Bond Urban SP South-Piara	278	9	288
DCP No3 Item 11A Keane Road Construction	35	-	35
	20,875	258	21,133



Spring to Armadale Marketing Campaign 2016 Report

BACKGROUND

The second Spring into Armadale marketing campaign was implemented by the City's Economic Development unit in alignment with Councils Corporate Business Plan 2013-2018 and Tourism Destination Marketing Strategy 2014 –2018.

Strategy 3.4

Raise awareness and appeal of the Armadale region as an outdoor leisure destination through collaborative promotion of the experiences, service and attractions available.

The development of the 2016 campaign was underpinned by strategy 3.4 and the goal of ¹challenging existing perceptions of prospective visitors, by delivering a high quality experience that encourages them to visit and return.

By targeting local visitors to rediscover and experience the region and then become advocates, we are seeking to achieve greater recognition of Armadale (in a broader context) as a desirable destination. Armadale will then become more attractive to the intrastate and national markets, as well as the rapidly growing market of visiting friends and relatives. This should all lead to an increased spend on economic yield to tourism in Armadale.

The 2016 Spring into Armadale campaign incorporated events and activities from 1 August to 31 October and was restructured around categories/common themes to simplify our message for the end user.

Categories included;

- Music, Art, Festival & Culture
- Experiences & Activities
- Food, Wine & Markets
- Kids Activities
- Sports, Trails & Walks
- History & Heritage.

Whilst the City delivered key events in the region during the campaign, community groups and industry stakeholders from tourism, arts, retail food and sporting facilities provided pivotal events and contributed towards the campaign, as destination hosts. Forty (40) individual and unique activities and events were delivered as part of Spring into Armadale at forty four (44) venues, and the campaign profiled forty five (45) food and beverage outlets in its advertising. The City worked collaboratively with these stakeholders to coordinate the campaign and bring this program to fruition, meeting the goal of ²strengthening existing local partnerships and tourism based initiatives, to build a groundswell of pride across the region-with residents and workers becoming advocates for the place.

¹ City of Armadale Tourism Destination Strategy 2015-2019; Place Match 2014

² City of Armadale Tourism Destination Strategy 2015-2019; Place Match 2014



Spring into Armadale Marketing Campaign Report 2016

DETAILS and RESULTS OF THE MARKETING CAMPAIGN

The marketing campaign activities were implemented from July to October (inclusive) and included traditional and contemporary marketing elements across print, media, television, radio and digital advertising.

The predominant key target audience was local residents of the Armadale region and surrounding catchment suburbs of Gosnells, Serpentine-Jarrahdale, Byford and targeted parts of metro Perth. The visitor market included locals, intrastate and the visiting friends and relatives with a small percentage of effort targeting the international market in a collaborative effort with Experience Perth. Whilst budgets do not allow for specific brand awareness campaigns, the Spring into Armadale logo was used consistently and formulated the basis of style guidelines for the Spring into Armadale campaign materials;

Print

- Event Program - 15,000 copies of a full colour A5 landscape publication was printed and distributed at key touchpoints through Examiner newspaper direct and TMP into Metro Perth. 1000 additional copies were printed due to demand, with 700 of these being inserted into Trievents/Duathlon participant registration packs.
- 53,000 copies of a ¾ page newspaper wrap was circulated on 1 September to outlets and households in the Armadale, Gosnells and Serpentine Jarrahdale shires around the Examiner newspaper.
- 3000 copies of A5 flyers were distributed via the Examiner newspaper letterbox distribution to households in Piara Waters, Hilbert and Harrisdale
- 12,000 copies of A5 flyers were distributed direct to households as inserts in in the Valley Reporter during September and October
- Monthly advertising /editorial was scheduled and printed in these publications:
 - CoA City Views
 - CoA Business E-news
 - Comment News-What's on
 - Roleystone Courier
 - Valley Reporter
 - Business news feature calendar; and
 - Sunday Times Magazine.

Various advertisements, promotional material were placed in;

- The Singapore market. 500 DL flyers at an industry consumer show in July
- Kelmscott Show program/A5 advertisement
- Posters/Flyers/Pull up banners were displayed at various venues
- 12 Mall Pole Banners
- Three Roadside Billboards were installed along Armadale Road for brand awareness.

Digital

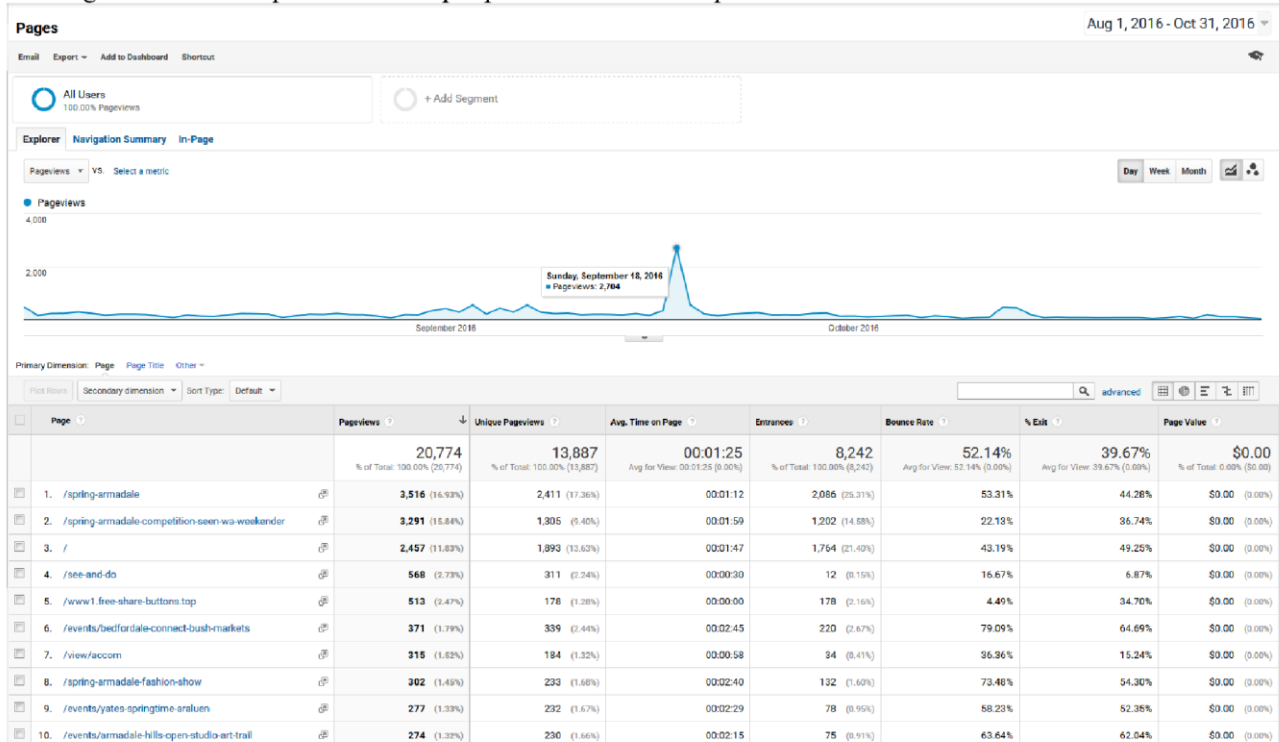
In 2016 the tourism coordinator worked closely with IT to integrate the various landing pages and domain names under one umbrella <https://www.visitarmadale.com.au/spring-armadale> with Spring into Armadale having its own page and event listings.

Between the festival periods of 1 August to 31 October 2016 Google Analytics recorded 20,774 total ¹ page views with 13,887 being total ² unique page views to the landing pages of the site. Various online advertising included banners, medium rectangle ads, event listings and features on industry/advertising platforms all clicking through to www.visitarmadale.com.au/springintoarmadale



Spring into Armadale Marketing Campaign Report 2016

There was an increase in traffic on Sunday 18 September during the WA weekender segments as a result of running a tourism competition. 1250 people entered the competition.



Results from referral sites:

www.armadale.wa.gov.au A rotating advertising banner placed on the homepage and a link on the Featured Info section of the City’s corporate site resulted in 645³ sessions

www.experienceperth.com A three month advertising banner and festival promotion resulted in 170,383⁴ impressions and 176⁵ click throughs from the Spring into Armadale festival page that sat within an overall ‘Spring in Perth’ feature, received a total of 426¹ page views from 1 August to 31 October 2016.

- Listed with Nova FM radio website
- E-News, City of Armadale and Visitor Centre

www.weekendnotes.com An advertisement listing on Weekend Notes for the Spring into Armadale Fashion Show returned 202³ sessions from referrals.

Social Media

Google Analytics registered Facebook as the second highest referral to our website with 1,327³ sessions including mobile sources and tablet, pc referrals.

Radio and Promotions

Nova 93.7 FM including live reads and Vox Pops

- Araluen Botanic Park
- Perth Kilt Run
- CoA Markets
- Karragullen Expo
- WA Weekender.

Spring into Armadale Marketing Campaign Report 2016



WA Weekender

Spring into Armadale was scheduled into the Marketing and Communications unit agreement with Channel 7 WA Weekender television travel show. Segments were filmed to promote Spring into Armadale including signature City events such as Highland Gathering and Perth Kilt Run, the Armadale Hills Open Arts Studio and other local features including walking trails and dining experiences.

The tourism coordinator also implemented a competition (to increase customer reach) that was run during the live to air segments to raise awareness of the Spring into Armadale campaign and bring traffic to the www.visitarmadale.com.au site. City staff worked alongside industry to collect prizes for a weekend getaway that showcased Armadale in a positive light and the competition attracted 1250 entries and reached 152,000 viewers over the two shows.

*DEFINITIONS

¹ **Page View**- an instance of a page being loaded (or reloaded) in a user's browser.

² **Unique Page Views**-the number of visits to a specified page URL

³ **Session**-a group of interactions that take place on your website within a given timeframe; EG: a single session can contain multiple screen or page views, events or social interactions.

⁴ **Impression**-when an ad is shown on a search result page on another site within the Google network

⁵ **Click through**-a ratio showing how often people who see your ad end up clicking it

Media

Public relations opportunities were overseen by the CoA Marketing and Communications Unit. Thirteen (13) press releases were written, including two (2) specific to Spring into Armadale, with the remaining eleven (11) related to CoA events;

- Outside the Frame Art Award
- Framed Aglow
- Memory Lane
- So Unexpected Art Exhibition
- Armadale Hills Open Studio Arts Trail
- Highland Gathering
- Perth Kilt Run x 2
- Spring into Armadale Fashion Show
- Twilight Markets
- Historical Society Conference

Uptake from local Newspapers (Comment News, the Examiner) was 100% on media releases distributed.

Araluen Botanic Park-Springtime

Throughout the period 20 August to 18 September the Springtime festival saw an average increase of 163 people per day to the park in comparison with 2015, recording a total of 75,000 visitors during the festival period. Armadale Visitor Centre set up a promotional 'pop up' stall at the Park within a marquee provided by Araluen Botanic Park.

Visitor centre staff served 7,894 people; and distributed over 2,500 visitor guides and 5,000 Spring into Armadale Festival Booklets during Springtime. There was a 5% increase of visitors to the Visitor Centre pop-up stall compared to 2015; providing information to 10.5% of the total visitors to Araluen Botanic Park during Springtime. City staff collected postcode data from 67% of the total visitors to the pop-up stall.



Events/Festivals and Visitors Behaviour Research

During Springtime 2016 the tourism coordinator also worked with Curtin University to obtain data analysis about Spring into Armadale. A research team undertook a study to examine the perceptions and behaviours of visitors to events/festivals which are organised by the City of Armadale (CoA) Eg: Spring into Armadale and Araluen Botanic Park (ABP). The study was not funded by CoA or ABP. Data collected was analysed and interpreted objectively by students. A total of 352 responses were collected providing insight into visitor attendance, satisfaction and future behaviour toward these events/festivals.

Results showed the following:

There is an even dispersal of male and female visitors (1:1.2) with the 35-44 year old age group accounting for the majority of visitors (37%), followed closely by the 21-34 year age group (32%). Married visitors (72%), earning under A\$44,999 (39%) and A\$45,000-A\$89,999 (32%) comprise the key market segments.

The majority of visitors reside in homes with a mortgage (41%) and live within a 30km radius (20%) from Araluen Botanic Park with an even spread of visitors living within a 20km radius (15%) from Araluen Botanic Park.

The top five motives to visit the City of Armadale and Araluen Botanic Park are: 1.to have a good time with family, friend or relatives; 2. relax; 3.do my own thing; 4. have a novel/new experience; 5. seek adventure.

During Spring into Armadale, 20% of the total events hosted had a visitation of over 1000 people. * See graph below

Fashion Show

The Spring into Armadale Fashion Show at Araluen Golf Resort was a hugely successful celebration showcasing the skills of our fashion artisans in Armadale's Darling Ranges and Western Australia.

The City's tourism coordinator worked with industry to build sustainable relationships with our partners, Fashion Advocate and Oracle Golf to deliver the event.

Fashion Advocate's multi-talented Catherine Birch has initiated the unique Life Skills Program for Aboriginal youth in the local community. Catherine uses art and fashion as engagement tools with these young adults with great success and the results meet objectives towards economic diversification, creation of new industries and employment.

The Fashion Show was the end of year celebration for the 2016 participants to model new spring collections designed by two West Australian fashion designers. In a fashion first, the city of Armadale hosted the unveiling of Red Opium's Alinga-Sun Goddess Australian Print collection. The patterns on the silk fabric were designed in collaboration with internationally renowned WA Noongar artist Peter Farmer. The show also profiled local label FuMoso by Thompson Design with her new spring collection.

156 guests attended with notable dignitaries including his Excellency the Honourable Nazaruddin Jaafar Consular General of Malaysia, the Hon. Tony Simpson MLA representing the Premier of Western Australia, Senator Linda Reynolds, Dr Tony Buti MLA, City of Armadale Mayor, CEO and Councillors.

The Spring into Armadale fashion show was an integral part of the journey in providing the opportunity for select models, to tour Malaysia and showcase the collection. These models attended the Alta Modo Fashion Show in Kuala Lumpur in November 2016, which has resulted in one model being offered an internship by the Malaysian Government. At the Spring into Armadale fashion show Peter Farmer held an exclusive art

Spring into Armadale Marketing Campaign Report 2016



exhibition of his works that inspired the collection. These artworks were then taken to Malaysia where eight of the eleven artworks were on-sold to dignitaries and diplomats.

“I must congratulate the organisers for making “2016 Spring Into Armadale Fashion Show” a resounding success. It was indeed an enjoyable event that not only showcased the beauty of the art work by the talented designers who were involved in the project. From my perspective, it was certainly more than that. I saw the event as a great platform to bring Malaysia closer to Western Australia and vice-versa.

The collaboration between the designers from both sides boded very well with the overall objective to bolstering and deepening ties between Malaysia and Western Australia. It has certainly played a significant role in enhancing people-to-people contact as I was made to understand that a group of designers from Western Australia visited Malaysia after the conclusion of the event in Armadale. The new skills and knowledge acquired from the visit including the direct mentoring by Catherine Birch who has been instrumental in assisting the said designers would go a long way in empowering the local community towards enhancing their own skills.

I hope to see more activities of this nature and would be more than happy to associate myself with them. Well done all!”

NAZARUDIN JAAFAR
Consul-General Consulate-General of Malaysia

Conclusion

Tourism in the City of Armadale is an emerging contributor to the economy of the region and will continue to grow as the Tourism Destination Strategy 2015 – 2019 is implemented and also in the development and growth of the Spring into Armadale campaign. The campaign will continue to develop more awareness and gain traction within the marketplace in the next three years, however will need to continually evolve with consideration to industry and market over the forthcoming years to reach the key target audiences and remain relevant.



Spring into Armadale Marketing Campaign Report 2016

Appendix of marketing collateral examples

Event Program 2016



Music, Art, Festival & Culture | See page 10 for event details

August

	M	T	W	T	F	SA	SU	M	T	W	T	F	SA	SU	M	T	W	T	F	SA	SU	M	T	W	T	F	SA	SU	M	T	W	T	F	SA	SU
	1	2	3	4	5	6	7	8	9	10	11	12	13	14	15	16	17	18	19	20	21	22	23	24	25	26	27	28	29	30	31				
Outside the Frame Art Award																																			
Roleystone Gala Concert																																			
It's Yates Springtime at Araluen																																			
The Art House Kelmscott Exhibition																																			
Memory Lane																																			
Roleystone Theatre - One Act Season																																			
Genesis in the Hills - Live Jazz Music																																			
Kelmscott Crafters																																			
Serpentine Jarrahdale Community Fair																																			
So Unexpected Art Exhibition																																			

September

	T	F	SA	SU	M	T	W	T	F	SA	SU	M	T	W	T	F	SA	SU	M	T	W	T	F	SA	SU	M	T	W	T	F
	1	2	3	4	5	6	7	8	9	10	11	12	13	14	15	16	17	18	19	20	21	22	23	24	25	26	27	28	29	30
It's Yates Springtime at Araluen																														
The Art House Kelmscott Exhibition																														
Memory Lane																														
Roleystone Theatre - One Act Season																														
Genesis in the Hills - Live Jazz Music																														
Kelmscott Crafters																														
Armadale Hills Open Studio Arts Trail																														
Highland Gathering																														
Cottonwool Creations Teddy Bear & Craft Gala																														

October

	SA	SU	M	T	W	T	F	SA	SU	M	T	W	T	F	SA	SU	M	T	W	T	F	SA	SU	M							
	1	2	3	4	5	6	7	8	9	10	11	12	13	14	15	16	17	18	19	20	21	22	23	24	25	26	27	28	29	30	31
The Art House Kelmscott Exhibition																															
Memory Lane																															
Kelmscott Crafters																															
Jarrahdale Log Chop & SJ Lions Country Fair																															
Karragullen Expo																															
Kelmscott Show																															
Spring into Armadale Fashion Show																															
Genesis in the Hills - Live Jazz Music																															

4 | City of Armadale



Spring into Armadale Marketing Campaign Report 2016

Digital banner



It's Yates Springtime at Araluen
Saturday 20 August – Sunday 18 September
Featuring over 120,000 tulips planted throughout the park as well as thousands of other bulbs and flowers. Join us this spring for an enchanting journey of colour in Perth's Hills.

Wildflower Walk
Sunday 28 August
Discover the second most diverse natural jewel on the Swan Coastal Plain. David from Friends of Forrestdale Lake and Neil from Murdoch Branch will join us to share their vast knowledge on diverse flora and fauna of the reserve.

Perth Kilt Run & Highland Gathering
Sunday 18 September
The Perth Kilt Run and Highland Gathering is here again. Come along to Western Australia's largest celebration of Scottish culture. Its kilts and bagpipes as far as the eye can see. Scottish arts and crafts, highland dancing and hotly contested heavy events.

Armadale Hills Open Studio Arts Trail
Thursday 8 - Sunday 16 September
Discover the Armadale Hills Open Studio Arts Trail, where local artists open their private studios to the public, for an intimate view of their inspiring creative processes. View an extraordinary array of beautiful paintings, watercolours, pastels, textiles, couture, ceramics and stoneware, steel sculptures, fine wood turning, Bibbulmun art and photography.

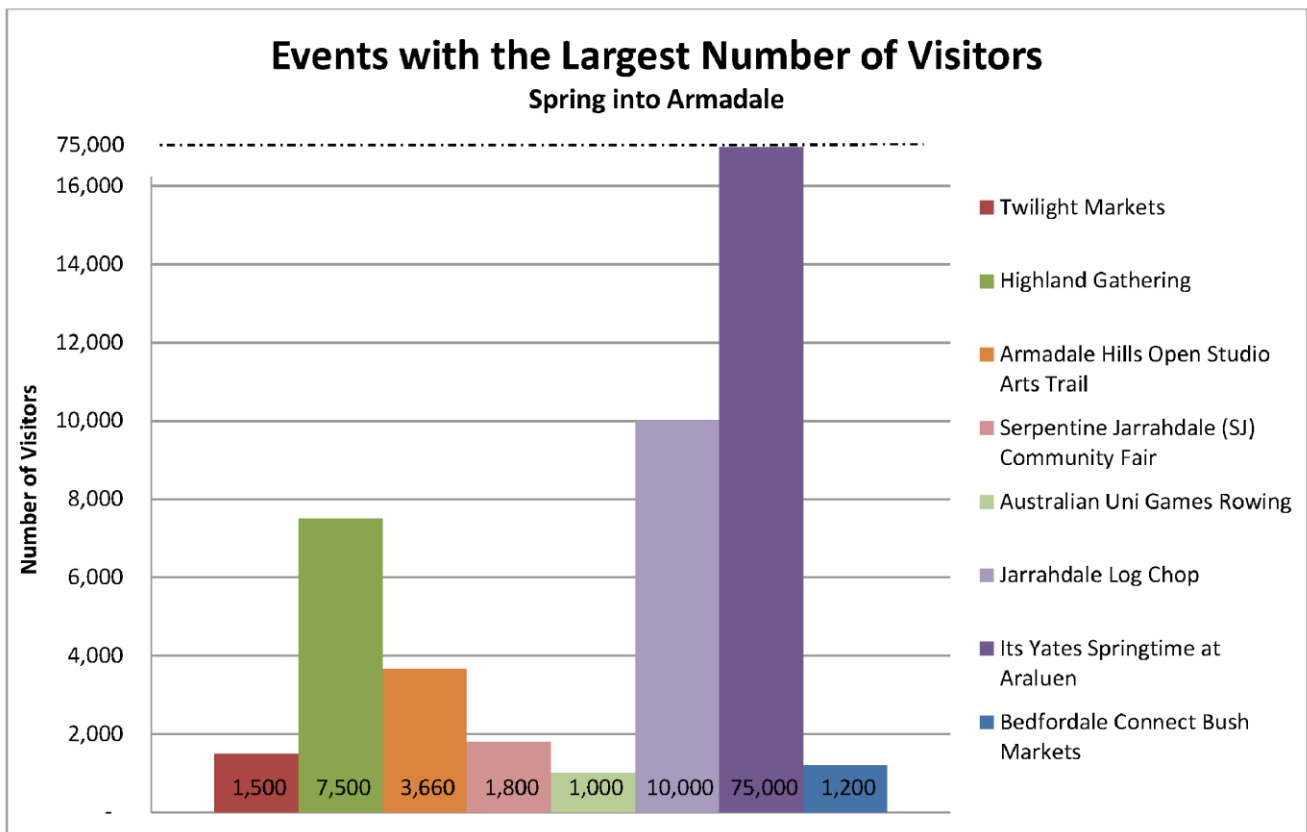
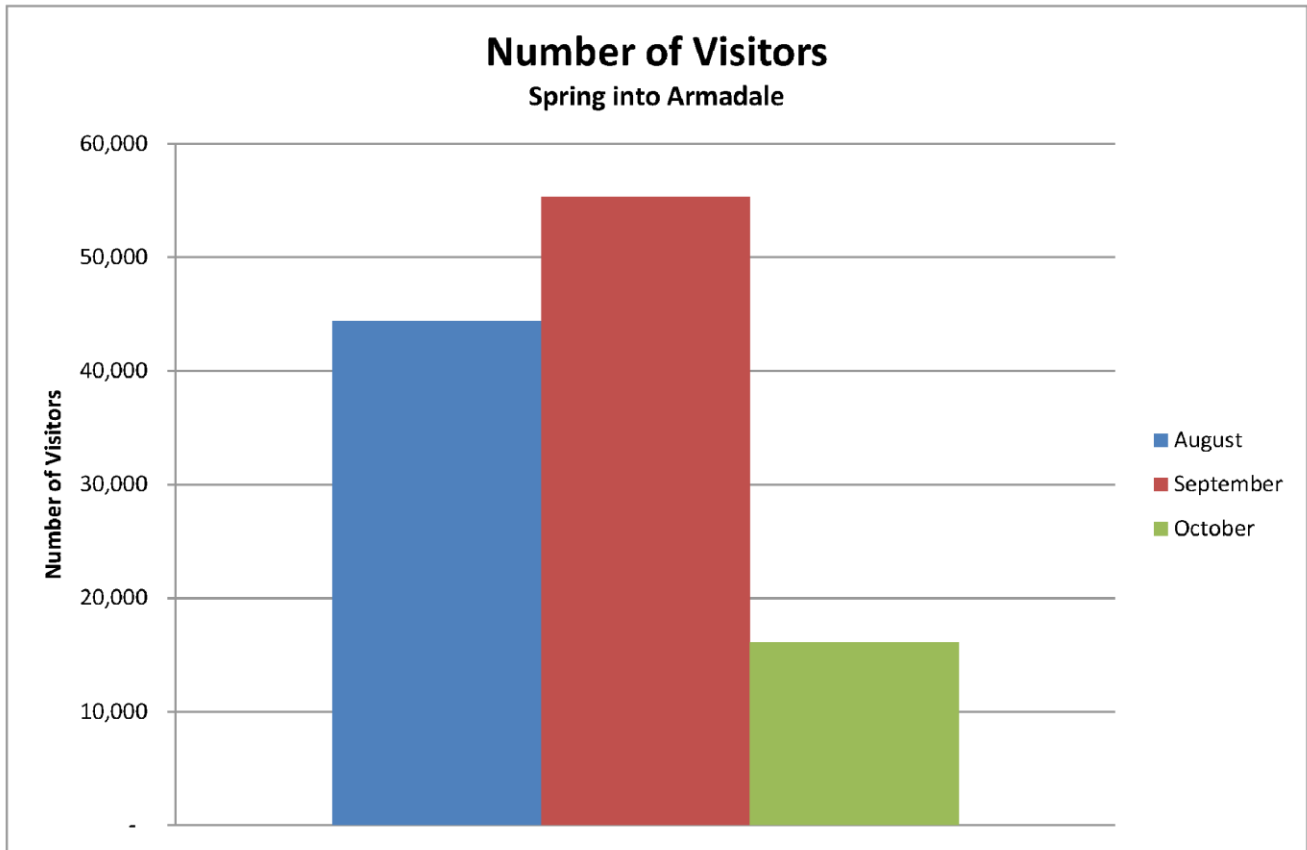
Spring into Armadale Fashion Show
Saturday 29 October
Spring into Armadale will showcase a cultural exchange fashion show with local indigenous models. Models will be wearing creations from local Western Australian designers and internationally renowned labels. Set in Armadale's picturesque Darling Scarp at Araluen Golf Resort.

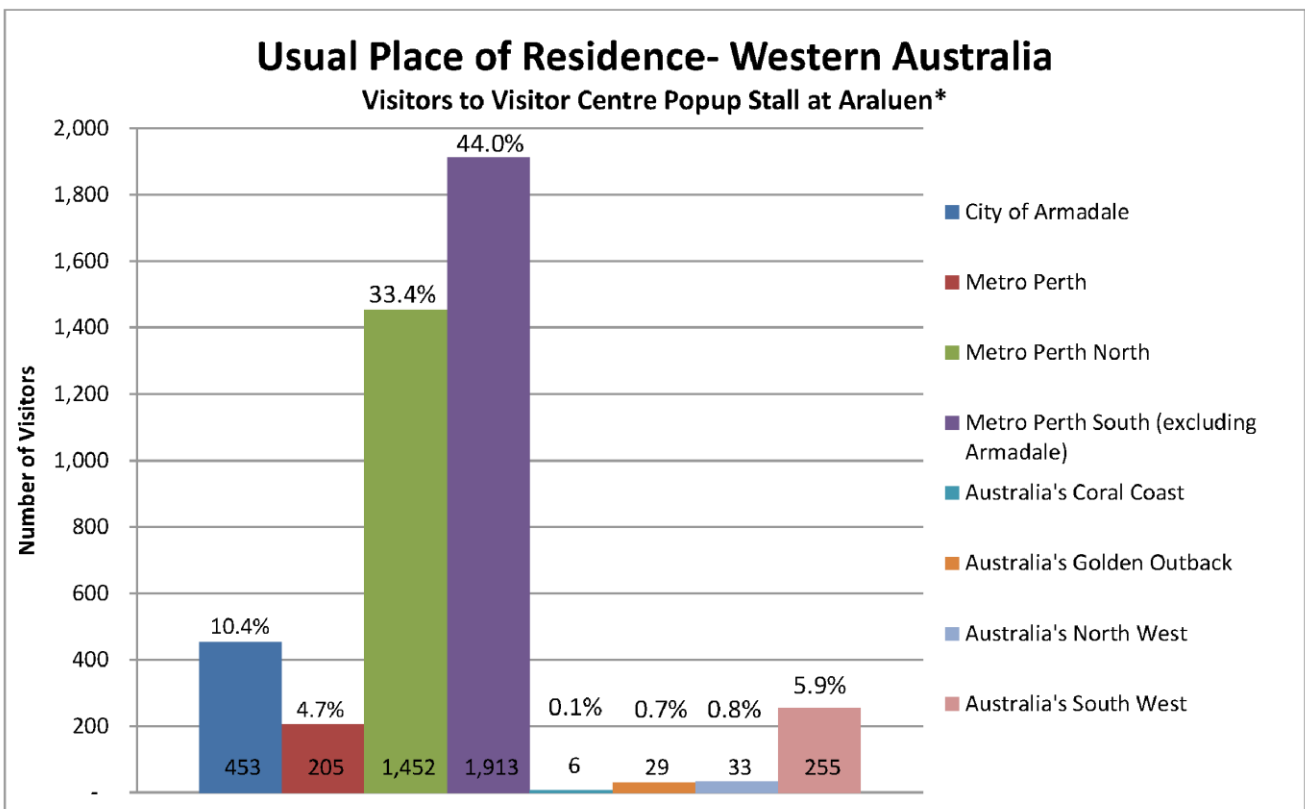
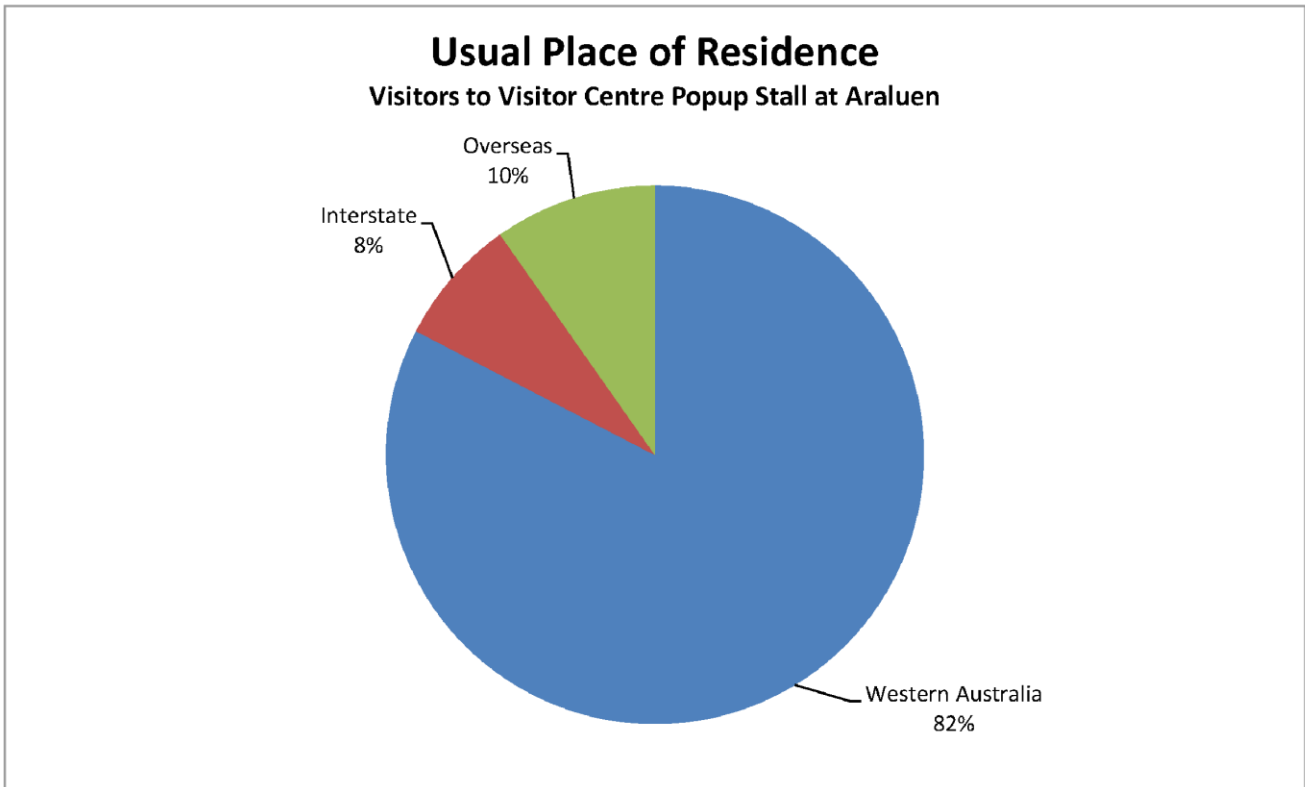
For a full listing of events find out more at
www.visitarmadale.com.au

DL Flyer-Singapore Consumer Show_back_page



Spring into Armadale Marketing Campaign Report 2016





*data displayed in the graph represents a portion of total visitors to the Visitor Centre pop up, as data was not collected from all visitors.

