

PERTH HILLS ARMADALE

Come see us!

perthhillsarmadale.com.au

CITY OF  Armadale



^ Roley Pools Reserve
< Cover image: Araluen Botanic Park

Find yourself in...

A romantic rural escape set in idyllic native bush, just 30 minutes from the City of Perth.

A rugged outdoor playground for inspiring adventures, stretching from the heights of the Darling Range to the rolling dales and valleys below.

A lively shopping, cultural and arts hub where markets promise everything, from fresh local produce to antique treasures.

An undiscovered food and orchard region as rich in Noongar lore and settler heritage as it is quirky traditions and popular family-friendly events.

The Perth Hills Armadale is all this and more!

Breathe the clean country air.
And find whatever makes you happy.



Make the most of your trip and download the Storytowns app to listen to interesting commentary as you travel around the district.

Contents

Dawn to dusk in the Perth Hills Armadale.....	4
Must Dos	6
I'm an Explorer	8
I'm a Nature Lover	12
I'm a History Buff.....	20
I'm a Culture Lover	24
I'm a Family Fun Seeker	28
I'm a Foodie.....	32
Calendar of Events	36
Maps.....	38
Accommodation, Dining and Experiences ..	40

Facilities key:



BBQ facilities available



Playground



Toilets



Picnic area



Accessible



Dog friendly

Copyright © 2025 Disclaimer: This publication is produced by the Perth Hills Armadale Visitor Centre. Although the greatest care has been taken to ensure accuracy of the information contained herein, Perth Hills Armadale Visitor Centre, including its agents, officers and contractors, accepts no responsibility for any inaccuracy or mis-description whether by inclusion or omission, nor does the publisher accept any responsibility for subsequent change or withdrawal of prices, details or services shown which are subject to alteration without notice. Advertisers wishing to subscribe to this publication can contact the coordinator by phoning (08) 9394 5410 or by email visitorcentre@armadale.wa.gov.au

Dawn to dusk in the Perth Hills Armadale



Morning

- **Drop your canoe or kayak in at Champion Lakes** for an early morning paddle around this world-class regatta centre.
- **Fuel up with a hearty breakfast** or grab coffee and treats to go at **Masa and Co.**
- **Hit one of many local hiking trails** or explore otherworldly landscapes at Boulder Rock.

Lunch

- **Explore the menu** at the **Last Drop Elizabethan**, cosy up beside the fire in winter or chill on the village green in summer.

Afternoon

- **Answer the call of adventure** with a visit to one of Armadale's three dams – Churchman Brook, Wungong or Canning.

Evening

- **Wind down with a few bevies** to celebrate the day at one of the popular local watering holes.

See more on page 8



Morning

- **Try a spot of bird watching** from the viewing platform at Forrestdale Lake or walk the perimeter trail – you may even see a kangaroo or three.

Lunch

- **Pack a picnic** and explore the trails of Bungendore Park or Settlers Common, both popular for wildlife and wildflowers throughout the spring and summer.

Afternoon

- **Immerse yourself in a tranquil haven** at **Araluen Botanic Park**, where something is always blooming.

Evening

- **Enjoy a relaxing dinner** on the banks of the Canning River at **Avocados Cafe**.

See more on page 12



Morning

- **Imagine life as an early settler** with a stroll through Pioneer Village, grab breakfast or coffee at **The Organic Circle**.
- **Learn about Armadale's migrant history** at Kelmscott Migrant Park or search for Moondyne Joe's cave in Churchman's Bushland.

Lunch

- **Pack a picnic** and head out to the Turtle Brook picnic area at Canning Dam, walk the trails to see the beginning of the Canning Contour Channel.

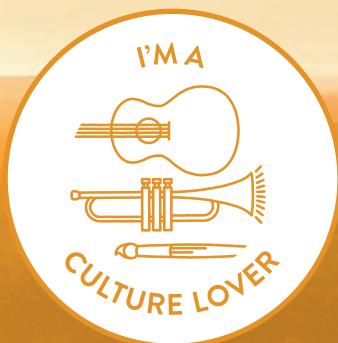
Afternoon

- **Step back in time** with a visit to **Bert Tyler Vintage Machinery Museum** or the nearby Minnowarra Historic Precinct and **History House Museum**.

Evening

- **Enjoy classic pub grub** at **Ye Olde Narrogin Inne**, home to one of the oldest liquor licenses in Western Australia.

See more on page 20



Morning

- ▶ **Start your day** with a relaxing breakfast at **The Pink Cafe**, where local art is often on display.
- ▶ **Check out a local market**, art exhibition or community event – head to perthhillsarmadale.com.au/events to see what's on.

Lunch

- ▶ **Pack a picnic** to enjoy as you wander the trails of Roley Pools Reserve, following the Djarlgarro (Canning River) along ancient paths.

Afternoon

- ▶ **Stroll the ReDiscover Armadale Art Trail** through Armadale City Centre, taking in colourful street murals and iconic statues.

Evening

- ▶ **Wine and dine** at **Seven Sins Perth Hills** before catching a show at the **Roleystone Theatre** (seasonal).

See more on page 24



Morning

- ▶ **Explore the trails** and let the kids loose at one of many local playgrounds.
- ▶ **Get up close and local** with furry and scaly friends at the **Armadale Reptile Centre**, home to over 70 fascinating Australian species.

Lunch

- ▶ **Visit the Cubby Cafe** at **11 Acre Farm** (the kids will love exploring the cubby laneway!) or pack a picnic or BBQ and head to Churchman Brook Dam.

Afternoon

- ▶ **Get on your bike** and test your skills at John Dunn Challenge Park, featuring pump tracks and a bike themed playground. Or take the troops on a digital treasure hunt and try your hand at Geocaching.

Evening

- ▶ **Fill up rumbling tummies** at the **Roleystone Club**, where the kid's area and playground might even allow you to eat a meal in peace!

See more on page 28



Morning

- ▶ **Start your day** with a delicious breakfast at **Orchard Espresso** – apple crumble pancakes anyone?
- ▶ **Take a ramble** through **Raeburn Orchards** and enjoy nature's bounty, stock up on fresh produce and goodies from the packing shed.

Lunch

- ▶ **Meet up with friends** and feast at the award winning **Seven Sins Perth Hills**, along with stunning views out over the valley.

Afternoon

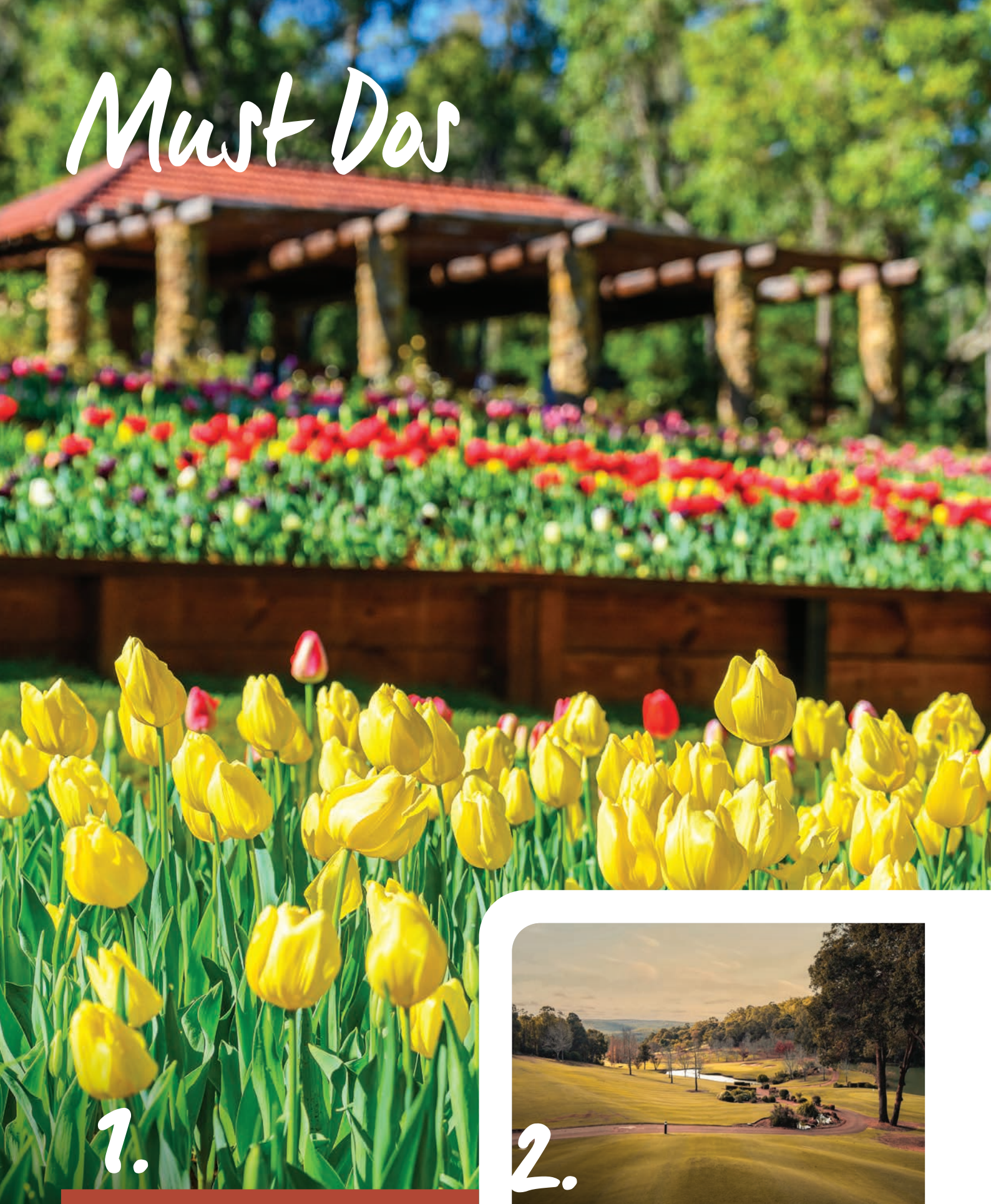
- ▶ **Go behind the scenes** and discover the grain-to-glass journey on a tasting tour at **McRobert Distillery** (bookings essential).

Evening

- ▶ **Indulge your tastebuds** at **That Plant Cafe and Bistro** where the French inspired menu is sure to impress.

See more on page 32

Must Dos



1.

Araluen Botanic Park

A year-round paradise for nature lovers, spanning 59 hectares of lush gardens, native Australian bush and scenic surrounds.

2.

Araluen Estate

A golfer's dream, featuring an 18-hole course known for its stunning natural beauty and challenging terrain.



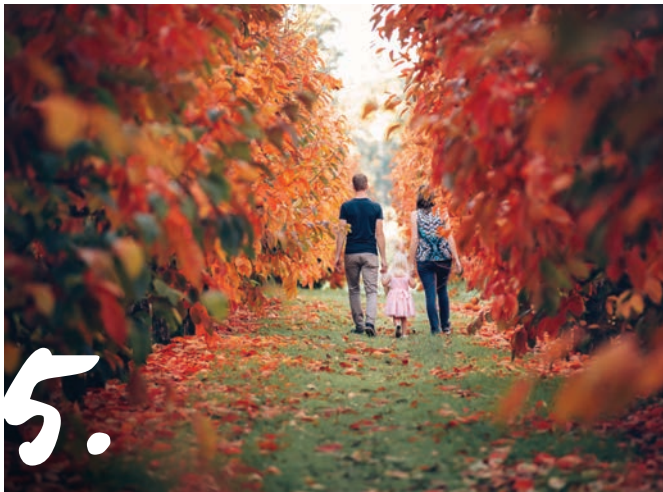
Armadale Reptile Centre

An unforgettable adventure with over 70 Australian species.



Churchman Brook Dam

Boasting tranquil turquoise waters and expansive grassy areas, a favourite for families and explorers.



Raeburn Orchards

An essential autumn outing, the orchard dazzles with persimmon trees aglow in fiery golden and amber hues.



Seven Sins Perth Hills

This award-winning restaurant dishes up an unforgettable dining experience.



Bungendore Park

A must for hikers and walkers, offering diverse trails through a rich jarrah-marri woodland.



Spring into Armadale

A vibrant season of events celebrating local culture, arts, and natural experiences.

I'm an *Explorer*



Embark on epic adventures through majestic bushland trails and explore stunning local dams. Experience adrenaline-pumping BMX challenges or enjoy serene moments at Champion Lakes Regatta Centre, a premier venue for water sports. For breathtaking views, the Armadale Hills Scenic Drive delivers picturesque landscapes and intriguing stops. Tee off in beautiful settings or lose yourself in otherworldly terrains. From scenic bike rides to tranquil escapes, your next adventure is just around the corner.

A dam good day



Answer the call of adventure in the Perth Hills Armadale with a visit to our trio of dams, each promising its own allure. Embark on a journey through rugged bush trails and soak in breathtaking views, sweeping out over the dam wall. Whether you seek the tranquil serenity of nature or the rush of exploration, Armadale's dams await you.

Canning Dam

Discover the beauty of Canning Dam, where history meets scenic charm. Explore picnic spots with BBQs, a playground and a reservoir-viewing platform. Built during the Great Depression, this iconic site offers walking trails showcasing historic landmarks like the Canning Contour Channel and stilling chamber. Keep an eye out for kangaroos and birdlife in the surrounding bush and relax by the flowing brook in the Turtle Brook picnic area.

< Awe-inspiring views at Wungong Recreational Lake

John Dunn Challenge Park

Gear up for an epic ride at John Dunn Challenge Park, the ultimate destination for BMX and mountain bike enthusiasts!

This state-of-the-art bike park is a playground where adrenaline meets skill, offering an array of tracks designed to push your limits and elevate your riding game. From the thrilling jumps on the advanced tracks to the smooth flow of the pump tracks, there's something for every rider. Perfect your skills on the versatile skills loop or take a spin around the bike safety track to sharpen your technique. And don't forget to check out the bike playground for some extra fun!

With its top-notch facilities and diverse terrain, John Dunn Challenge Park is your go-to spot for a heart-pounding, action-packed biking adventure.

Grab your bike and get ready to conquer the challenges that await—this is one ride you won't want to miss!

Push your limits at John Dunn Challenge Park >



Wungong Dam

Experience stunning scenery at Wungong Dam. Located within Wungong Regional Park, the location is a haven for native wildlife, with Splendid Fairywrens regularly spotted by birdwatchers. Keep a keen eye out and you may even spot an elusive echidna! The lower parking area of Wungong Dam provides trailhead access to the Wungong Gorge Walk, perfect for fans of epic hikes. The 11km return trail passes dramatic granite outcrops and centuries-old boulders, offering awe-inspiring views as you journey through the valley.

Churchman Brook Dam

Tranquil turquoise waters as far as the eye can see. Churchman Brook Dam is a favourite amongst our little explorers, offering a fantastic nature playground and huge grassy areas, perfect for running and playing. Easy walk tracks span the surrounding bushland, providing plenty of opportunities to discover the local flora and fauna.

Check with the team at the Perth Hills Armadale Visitor Centre for information on dam closures and seasonal opening hours.

Champion Lakes Regatta Centre

A world-class venue for water sport competitions and training, Champion Lakes plays host to prestigious rowing, canoeing, kayaking, dragon boating and triathlon events. The 55-hectare man-made lake features a 2000m rowing course and for those who prefer dry land, a 5km dual pathway encircles the lake, perfect for walkers, runners and cyclists. It's also a magical spot for early birds to watch the sunrise.



^ Do whatever floats your boat at Champion Lakes

Armadale Hills Scenic Drive

The tradition of a Sunday drive is one that's stood the test of time. Chat to any Perth local and they'll fondly tell you memories of family drives out to the hills for bushland walks, picnics or a parmy and pint at the pub. For explorers short on time, the Armadale Hills Scenic Drive is perfect. It offers stunning scenery, breathtaking views, and interesting places to visit, all in under an hour. Add a few attractions and stops for food, and you'll have a full day of entertainment.



Download the Storytowns app to listen to interesting commentary as you pass by attractions along the drive, audio will play automatically near our highlights!

Fancy *a day* on the green?

Araluen Estate is a golf lover's dream. Featuring an 18-hole course surrounded by natural Australian bushland and inhabited by abundant native wildlife, it's the perfect place to meet for tee time.

Highlights



Last Drop Elizabethan

If you're starting your drive around lunchtime, don't miss the opportunity to fuel up with a classic pub meal at this Olde English style tavern.



Armadale Settlers Common East

Stretch your legs and wander through native bushland, listen out for the screech and squawks of Red-tailed Black Cockatoos.



Churchman Brook Dam

A picnic lovers paradise, this dam has it all. Walk trails, free gas BBQs, picnic tables, toilets, and grassy playing areas.



Araluen Botanic Park

Botanical beauty at every turn, every season offers something different and there's always something blooming!



Raeburn Orchards

Experience the enchanting seasons at Raeburn Orchards, where spring and autumn transform the fruit trees into a kaleidoscope of colours.



Tranquil waters
as far as the eye
can see.



^ *Stunning skies at Churchman Brook Dam*

Photo courtesy IG @_davidgold_

I'm a Nature Lover



Swap the clamour of the city for the tranquil calm of tall timber forests, native birdsong and scenic beauty at every turn. Walk among jarrah and marri giants and vivid blankets of spring wildflowers. Hike your heart out along one of many fantastic trails, ranging from gentle strolls to epic endurance hikes. Observe kangaroos in the wild, or spot a kaleidoscope of native birds, from Splendid Fairywrens to Red-tailed Black Cockatoos in their natural habitat.

Wildflowers in Bloom

The City of Armadale covers an area of 560 square kilometres, encompassing damplands and banksia woodlands within the Swan Coastal Plain, laterite and granite outcrops of the Darling Scarp and vast forests of marri, jarrah and wandoo across the Darling Plateau. This rich variety of topography and soil types produces a spectacular range of ecosystems in which wildflowers thrive and bloom year-round.



Top Five Wildflower Trails

1. Bob Blackburn Reserve
2. Honeyeater Hike – Bungendore Park
3. Spinebill Stroll – Bungendore Park
4. Botanical Trail – Churchman's Bushland
5. Prickly Moses and Yam Trails – Lloyd Hughes Park

Enjoy these trails year round, or visit between August and November for the best wildflower sightings.

Thank you to the Armadale Branch members of the **Wildflower Society of Western Australia** for sharing their treasured local knowledge and photos. The Society hosts a variety of walks and talks throughout the year to share their passion for our local environment, visit wildflowersocietywa.org.au for upcoming events.

Visit the Perth Hills Armadale Visitor Centre for insider tips on seasonal blooms and where to spot them.



Top 10 Trails

From the littlest of explorers to seasoned adventurers, there's a hike for everyone.

1 Armadale Settlers Common East

Take time out with nature by heading on a short drive out of Armadale's CBD for a stroll or hike. Choose from a series of moderate trails. Push a pram along the wheelchair accessible Jeeriji and Baliff Trails or hike further into the larger reserve on the wider network of walk trails.

Class 1-3 ■■■■ | 1-10km | 🐾 | ♿

2 Lloyd Hughes Park

Located in the foothills of the Darling Scarp in Kelmscott. This 17.7 hectare reserve is home to two walk trails, the Prickly Moses and the Yam Trails, both of which feature (thigh burning) steep inclines. Gorgeous views provide a welcome distraction.

Class 3 ■■■■ | 1km | 🐾

3 Whistler Walk – Bungendore Park

Stroll beneath the towering canopies of jarrah, marri, casuarina, and banksia trees, as you are serenaded by the gentle calls of the park's diverse birdlife. Take in the beauty of native blossoms along the way.

Class 2 ■■■■ | 2.3km | 🐾

4 Boardwalk Trail – Roley Pools Reserve

Meander a trail of enchanting paperbarks and breathtaking granite boulders through this much loved Roleystone gem. Keep an eye out for native wildlife, especially the 'rakali', Australia's only native water rat.

Class 2 ■■■■ | 2.6km | 🐾

5 Heritage Walk – Roley Pools Reserve

Explore a magical path along Djarlgarro (Canning River), tracing the ancient routes of the Whadjuk Noongar people who navigated these waters to access seasonal food sources. Delight in the picturesque cascades, where the river gracefully falls over stunning rock formations.

Class 2 ■■■■ | 3.2km | 🐾

Class 1: Easy, even surface, no stairs and suitable for prams and unassisted wheelchair users.

Class 2: Easy, gentle hills and occasional steps. No bushwalking experience required.

Class 3: Moderate trails with signage, short hills, steps and/or rough surface. Some bushwalking experience required.

Class 4: Difficult trails, limited signage. Steep hills, rough terrain. Bushwalking, navigational experience and good fitness required.

10 Wungong Gorge

Let your sense of adventure loose on the Wungong Gorge Trail. It's widely regarded as one of Perth's most breathtaking day hikes, following the winding path of Wungong Brook through some of the most dramatic landscapes and beautiful rugged scenery in the Darling Range.

Class 3  | 11km | 

6 Forrestdale Lake

Pack your binoculars! The lake and adjoining bushland are a haven for nature enthusiasts. The habitat surrounding the trail provides shelter and nesting places for up to 72 waterbird and 74 'bush' bird species. Challenge yourself to spot as many as you can!

Class 2  | 6km | 

9 Echidna Walk – Churchman's Bushland

Embark on a challenging yet very rewarding hike through rolling pastures, rocky outcrops and lush eucalypt bushland. Along the way, plenty of wildlife provide welcome distraction while the highlight awaits: the awe-inspiring 140m long and 30m high dolerite rock wall, a favourite spot for outdoor rock climbers.

Class 4  | 9km | 

8 Honeyeater Hike – Bungendore Park

This well-marked, one-way loop trail offers a diverse mix of broad and narrow gravel paths, guiding you through rich flora and fauna across varied landscapes. Seasonal creeks flow May through to November and if you have a keen eye, you'll notice wildflowers blooming year-round.

Class 3  | 7.7km | 

7 Champion Lakes Walk Trail

Enjoy a leisurely walk or bike ride along the dual use paved pathway encircling Champion Lakes Regatta Centre. If you're lucky you'll see teams rowing, canoeing or dragon boating on the lake, which was purpose built for competitions.

Class 1  | 5km |  | 

Chat to the experts at the Perth Hills Armadale Visitor Centre for insider tips, parking and trail maps.

Happy Hiking Tips



Take a friend

Not only are they great company, but hiking in groups ensures safety in numbers in the event of injury or illness.



Dress for success

The Australian sun can be very harsh. Cover up to protect yourself with long sleeved clothing, hats and sunglasses.



Stay hydrated

Access to water is limited or unavailable on most trails, so pack at least two litres per person, per day – more for hotter days.



Leave no trace

You know the drill, take nothing but photographs, make nothing but memories. Help us preserve our natural environment for generations to come and use dieback stations to help prevent the spread of disease.



Respect the locals

You're likely to encounter birdlife, kangaroos and even snakes when you're out on the trail. Give animals a wide berth and be on the lookout for sleepy snakes soaking up the sun during summer. If you spot one, walk around it and leave it alone. Wildflowers are beautiful to behold, picking them is illegal.

Hike with the Experts

If you'd prefer the company of a guide and other happy hikers, embark on a group hiking experience with hiking enthusiasts **Off The Beaten Track WA** or **The Hike Collective**.

offthebeatentrack.com.au

hikecollective.com.au



SIX SEASONS TRAILS

Experience the magic of the Perth Hills through the Six Seasons Trails series in Armadale.

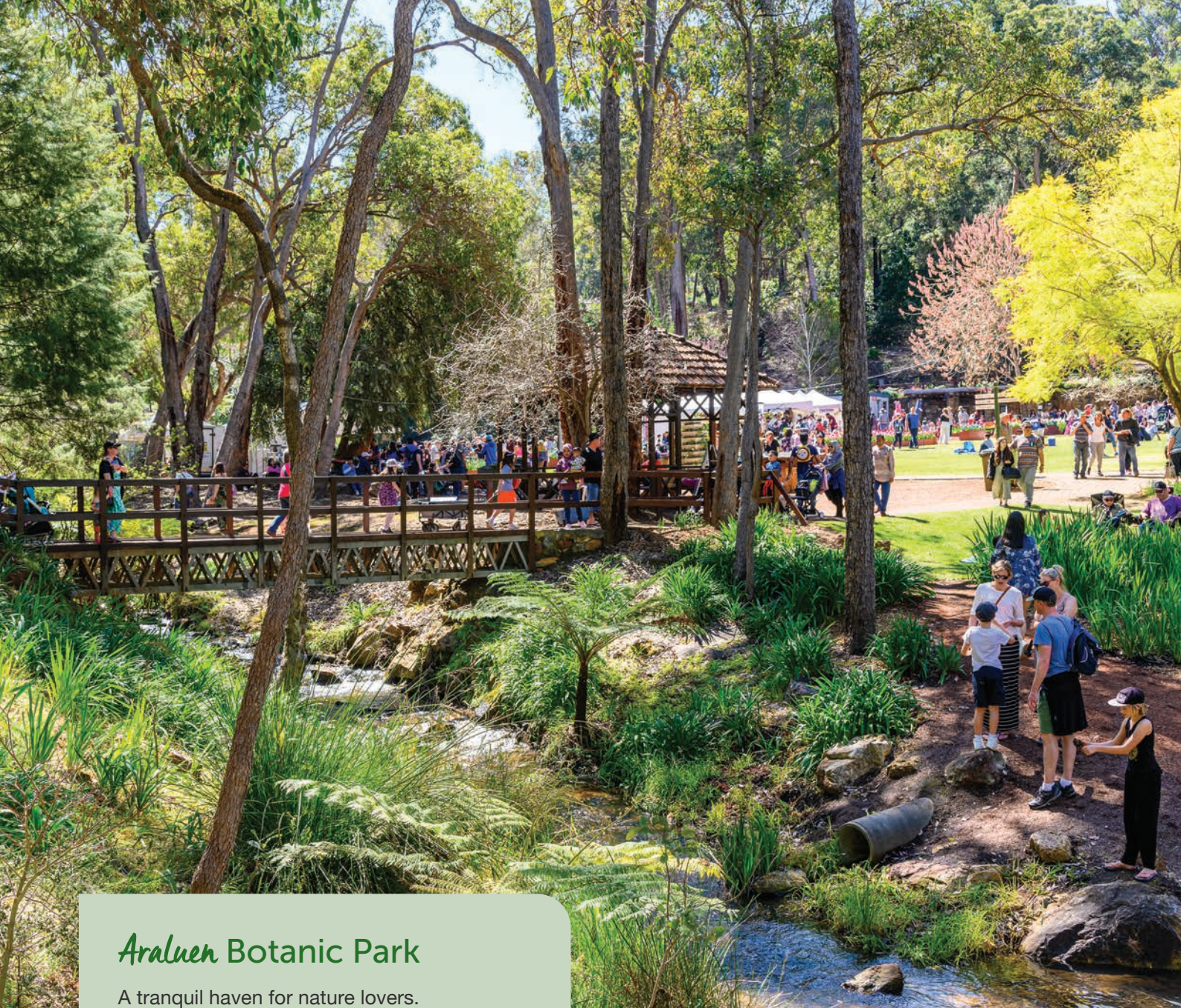
Guided by the award-winning team at The Hike Collective, each trail is matched to one of the six Noongar seasons, offering a unique journey through changing landscapes, native flora, and rich cultural and historical stories. From vibrant wildflower blooms to cool misty forests and wetlands, every hike is a chance to reconnect with nature and nourish your wellbeing. Designed to promote mental and physical wellness, these guided hikes are an invitation to walk, reflect, and discover. Join us across the seasons.



Book your trail adventure now.

Delivered by





Araluen Botanic Park

A tranquil haven for nature lovers. This breathtaking park spans over 59 hectares, boasting a diverse collection of flora that showcases the region's unique botanical heritage.

Be treated to a sensory delight as you wander through lush gardens adorned with native Australian plants, exotic blooms, and towering trees.

The park's winding pathways lead to peaceful ponds, cascading waterfalls, and scenic picnic spots, providing abundant opportunities for relaxation and contemplation amidst nature's beauty.

Whether exploring the colourful tulip displays in spring or enjoying the rich autumn hues, **Araluen Botanic Park** offers a year-round retreat where visitors can reconnect with nature and immerse themselves in this botanical paradise.

Wellness in Nature

Escape the hustle and bustle of everyday life and rejuvenate your spirit with a visit to local wellness havens.

Nestled amidst a tranquil avocado orchard, **Restful Waters** invites you to immerse yourself in a world of tranquillity with a rejuvenating sound bath. Different instruments are played to bathe you in sound waves, creating a meditative experience. Although the practice stems from yoga traditions, you don't need to be flexible to participate, simply lie back and let the relaxing sounds wash over you.

For a deeper retreat, consider spending a day at **Kookaburra Yoga** in the picturesque Perth Hills. This sanctuary promises a holistic escape with yoga, meditation, sound healing and wholesome meals to nourish body and soul. Surrounded by the healing embrace of native bushland, it's the perfect place to restore balance.

Meet the Locals

Birds of the Perth Hills Armadale

If you're a bird enthusiast or simply looking to connect with nature, the Perth Hills Armadale is your perfect destination. This region is a haven for spectacular species, and you'll find plenty of avian wonders to admire. Grab your binoculars, pack a picnic, and get ready to meet the feathered locals! Here's where to find them:

Bungendore Park: Explore lush trails and spot the majestic Red-tailed Black Cockatoo. Look up to see these impressive birds soaring and feeding on honky-nuts.

Banyowla Regional Park: Catch sight of the lively New Holland Honeyeater, darting through the lower canopy or perched high, often seen gathering nectar or snatching insects mid-flight.

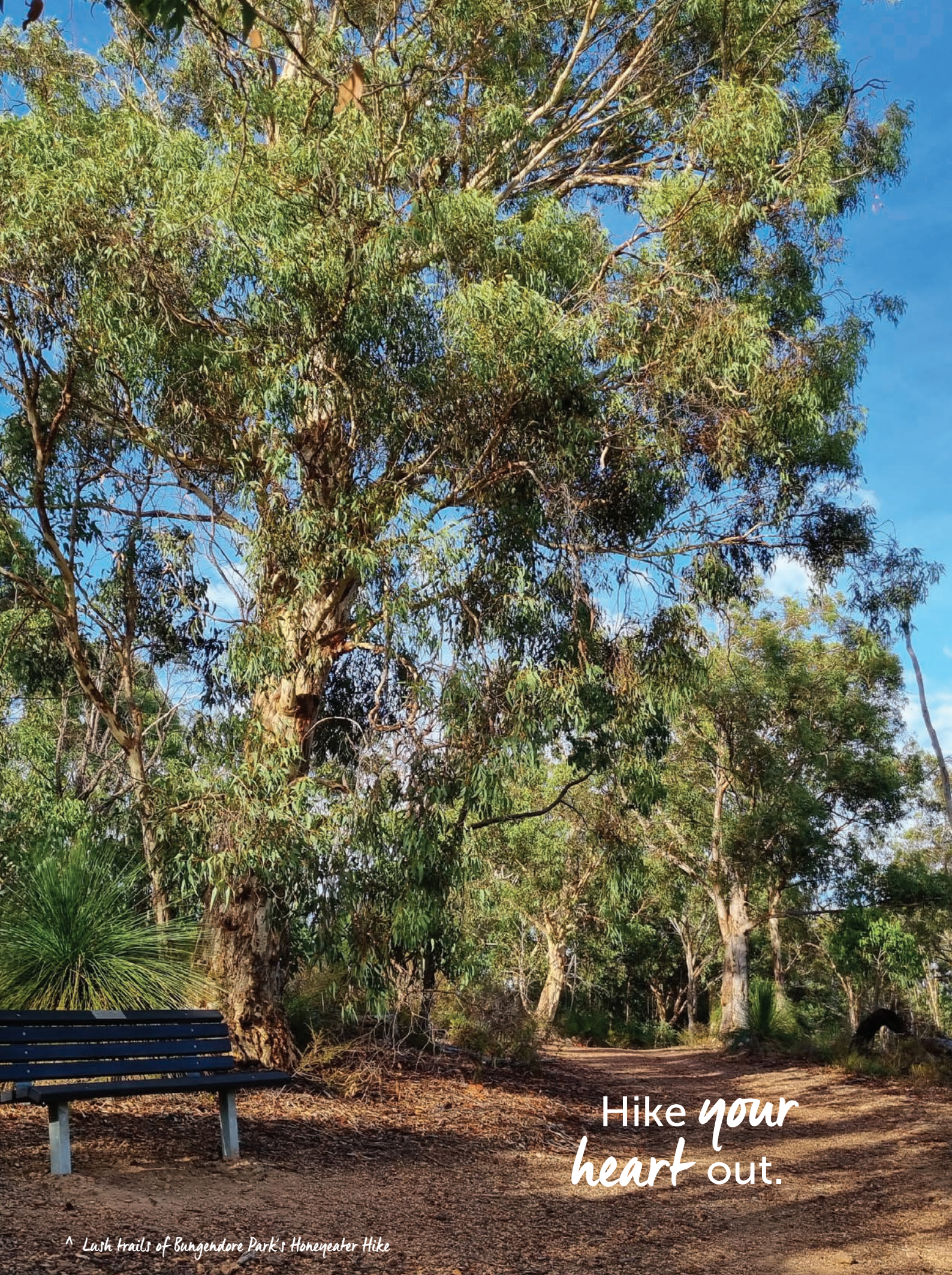
Wungong Dam: Enjoy the symphony of chirps from the charming Splendid Fairywren, adding a touch of magic to the landscape as they flit around the dam.

Armadale Settlers Common: This bird haven is home to the Red-tailed Black Cockatoo, Western Spinebill, and Baudin's Black Cockatoo, making it a fantastic spot for birdwatching.

Spot a
kaleidoscope
of native birds.



^ Black Cockatoo. Photo courtesy of Mark Eatwell



Hike *your*
heart out.

^ Lush trails of Bungeadore Park's Honeyeater Hike

I'm a History Buff



Step back in time and explore the rich tapestry of Armadale's history, where ancient Noongar culture meets pioneering European settlement. Discover the deep connection of the Noongar people to the land, shaped by the Dreaming and their intricate relationship with nature. Wander through the early days of European exploration and settlement, from the establishment of Kelmscott and the iconic Narrogin Inn to the growth fuelled by road and rail. Learn more at local museums and historic sites and delve into the local legends that shaped the City of Armadale.

We are on *Whadjuk Noongar* Country

The City of Armadale sits upon the traditional lands of the Noongar people, who have cared for and lived in connection with this Country for tens of thousands of years. The Whadjuk region extends across many parts of the South West, from Geraldton in the north, down to Cape Leeuwin in the south, and as far east as Esperance.

Deeply connected to their land, the Noongar people's survival relied on an intimate understanding of their environment, shaped by the Dreaming. This mythical period established the laws, dietary practices, and interdependence between people and nature, making the Noongar way of life inseparable from their surroundings.

In the southwest, the Noongar people lived along the coast during the drier months and moved inland before winter to follow kangaroos and emus, setting up shelters where food was abundant. The specific area now known as Armadale fell under the territories of Beeloo (Munday) to the north and east of the Canning River, and Beeliar (Midgegooroo) to the south and west. The Noongar name for Kelmscott is Goolamrup, and the Canning River is known as Djarlgarro.

Top nine experiences for *history buffs*

1

History House Museum

Immerse yourself in the region's heritage with several exhibits that tell the story of the people and events that have shaped the City of Armadale over the past 200 years.

2

Bert Tyler Vintage Machinery Museum

Marvel at this rare collection of twentieth century engines and the replica Post Office, with early telegraph equipment. Guided tours are available, bookings are essential by calling 9394 5410.

3

Kelmscott Migrant Park

Visit Migrant Park, formerly Kelmscott Migrant Camp, and discover what life looked like for the migrant families who flocked to Australia after the Second World War. The interpretive memorial tells their story.

4

Minnawarra Historic Precinct

Home to History House Museum, the historic school room and Minnawarra Chapel. Originally built in 1903 as a Congregational Church, the Chapel was relocated and rebuilt, brick by brick, at its current location in 1987. Enjoy the views out over Minnawarra Lake.

5

Pioneer Village

Pioneer Village opened in 1980 as a replica of an early settler's village from the 1860s. During its heyday, many of the buildings were occupied by craftsmen dressed in period costume and producing traditional goods, and there was even a reconstruction of a 19th century goldmine with an underground gallery. Wander around the streets to see the old buildings and the shops they now house.

6

Ye Olde Narrogin Inne

The City of Armadale grew up around the original Narrogin Inn, built in 1853 as a waypoint on the developing road network connecting Perth to Albany and Bunbury. While the original inn no longer exists, the new Narrogin Inn (built in 1936) still holds one of the oldest liquor trading licenses in Western Australia.

7

Last Drop Elizabethan

Located within the Elizabethan Village precinct, which was originally built in the mid-1970s as a tourism attraction that included accurate replicas of William Shakespeare's house, Anne Hathaway's cottage and an Elizabethan style pub with a village green. The locally-owned pub has been brewing in the Bedfordale Hills since 1992, using traditional German brewing methods dating back to the 1500s!

8

Heritage Trees Trail

Explore Armadale's historic trees and discover their cultural, botanical, and historical significance on the self-paced Heritage Trees Trail. Wander past heritage buildings and sites, and don't miss the chance to relax in a park or visit a cafe along the way. Some trees are over a century old! Collect a map from the Perth Hills Armadale Visitor Centre.

9

Birtwistle Local Studies Library

Delve further into your journey of historic discovery at Birtwistle, where you'll find a comprehensive source of information and photographs relating to the history of the district. The library is named after eminent journalist Ivor Treharne Birtwistle (1892 – 1976), editor of The Western Mail newspaper and founding member of the Royal Western Australian Historical Society.

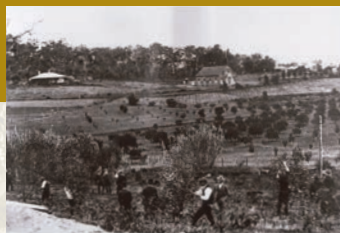
Contact the Perth Hills Armadale Visitor Centre on **9394 5410** for opening hours.

Settlement to City



In November **1829**, just five months after the founding of the Swan River Colony in Western Australia, an exploring party led by Governor Sir James Stirling chose a site for a new town on the banks of the Canning River.

In the early days, a major road between Albany and the Swan River Settlement passed through Kelmscott. In **1856**, Henry Gibb and Thomas Saw opened the Narrogin Inne, still operating with one of Western Australia's oldest liquor licenses. The **1890s** saw the South Western Railway spur local development and agriculture, leading to the growth of Armadale.



In **1893**, Martin Edward Jull and Dr. Ferguson Stewart planted the state's first cabernet sauvignon and malbec grapes at their vineyard, Derry na Sura. The vineyard became a major wine producer, exporting to Europe in the **1920s**.



The State at the time was governed at a local level by roads boards. In **1894**, the Southern section of the area known as the Canning Roads Board was separated and the new area of 504km² became the Kelmscott Roads Board.

European settlement

The influence of road and rail

Pioneering vineyards

Kelmscott Roads Board

Kelmscott

Moondyne Joe

Orchard country

The Governor named the town Kelmscott after Archdeacon Thomas Scott, whose birthplace in England was Kelmscott and who helped establish the Anglican Church. The first building, an **1830** barracks, became the Martin family homestead until the **1930s**.

Joseph Bolitho Johns, infamous bushranger Moondyne Joe, moved to Kelmscott in **1864**, working around the district and often staying with the Martin family. Legend says he used a cave in a granite rock face near Roley Pools Reserve as a hideout while evading police.



In 1893, orchards began in Bedfordale, Roleystone, and Karragullen, including Thomas Price's Illawarra Orchard. By **1907**, Price successfully exported apples to England. The Darling Range climate was ideal and the Mount Orchard thrived with tropical fruits like bananas, mangos and pawpaws. Many orchards were established by Italian migrant families in the early to mid-**1900s**.





In **1902**, Thomas Coombe opened the Armadale Brickworks, capitalising on the area's heavy clay soils. Known for high-quality bricks, the works produced 4,000 bricks an hour, reaching 110,000 per week by **1905**.

Originally founded by the Young Australia League, the land was purchased in **1929** and used as a youth camp, before the area that makes up today's park was sold in **1985**. The Grove of the Unforgotten, a beautiful series of terraces, commemorates members of the League killed during The Great War.

The district united for the war effort with numerous fundraising activities, but faced significant losses as the war continued. Orchards, hit hard by the loss of young people, received help from the Women's Land Army in **1942**. Initially hesitant, farmers were soon impressed by the women's work. After WWII, migrant camps were established in Kelmscott to address regional labour shortages.

Armadale Brickworks

Araluen Botanic Park

World War II, 1939-1945

The Jull family

World War I, 1914-1918

The Dams

We become a City

Martin Jull married Roberta Fergusson-Stewart, Western Australia's first female doctor, in **1898**. Their daughter, Henrietta Drake-Brockman, was a noted novelist and historian. The family's home near Minnawarra Park, 'Brookside,' featured iconic Sugar Gums. Jull Street in Armadale is named after this pioneering family.

Despite its hardships, there was a great sense of community as locals rallied around the war effort. In September **1915** a dance was held for leaving men and it was remarked that almost every family had someone in the armed forces.

In December **1916** a memorial obelisk to honour WWI soldiers was unveiled in Armadale, the first erected in Australia. Originally located at the foot of Fourth Road, in **1959** it was relocated to its present location in Memorial Park.

Armadale boasts three dams, Churchman Brook Dam built in the **1920s**; Canning Dam, built by sustenance workers as part of works projects during the Great Depression; and Wungong Dam in **1979**. Dams built as part of the Hills Scheme played a fundamental role in reducing Perth water shortages.

With the proclamation of the City of Armadale in **1985**, the adopted slogan of 'City Living, Country Style' encapsulated the direction Armadale was to head. The new administration buildings stand on the former site of Brookside and, despite the park and lake only dating from **1986**, the plantings of sugar gums date from approximately **1895**, providing a reminder of where the City came from.



Historical timeline courtesy of 'Settlement to City' by Jennie and Bevan Carter, a wonderful book detailing the history of the Armadale district and its people. Available for purchase at the **Perth Hills Armadale Visitor Centre**.

I'm a Culture Lover



Immerse yourself in Armadale's rich cultural landscape, where ancient traditions and modern artistry come together. Explore the deep-rooted heritage of the Noongar people through captivating art and storytelling as you stroll along scenic trails. Experience the vibrant local art scene with dynamic murals and sculptures when exploring the region on foot. Delight in a variety of markets offering fresh produce and unique crafts, capturing the region's creative community spirit.

Local *Aboriginal* culture

The art and culture of the local Noongar people, the region's traditional landowners, stretches back for millennia. Visit the **Aboriginal Interpretive Centre**, located at the entry to Champion Lakes Regatta Centre. There, an interpretive walkway provides a journey through time, sharing Noongar stories from the dreamtime through to present day. Aboriginal artwork lines the paths and benches, providing a peaceful place to pause and respect the world's oldest continuous living culture.

< ReDiscover Armadale Urban Art Trail - Sharyn Egan



ReDiscover Armadale *Urban Art Trail*

Step into the vibrant world of Armadale's urban art scene. This self-paced walking tour unveils a captivating display of local, national, and international artistic talent through a compelling array of murals and sculptures. As you wind through Armadale City Centre, immerse yourself in the creative energy of these larger-than-life urban artworks, each telling a unique story.

Collect your trail map from the **Perth Hills Armadale Visitor Centre**.



Roley Pools – Heritage Walk Trails

There are four walking trails in Roley Pools Reserve where you can discover its unique plants, animals, history and landscape. The trails follow the Djarlgarro (Canning River). The river holds great significance to the Whadjuk people (Aboriginal Australians of the Swan Coastal Plain).

"The Waugal (Rainbow Serpent) is the ruler of earth and the sky. He makes thunder, lightning and rain. Waugal created the rivers, the swamps, the lakes and the rock holes. Noongar people say that the spirit of the Waugal lives in all the fresh water sources.

A cultural ritual can be performed to let the Waugal know that you will not harm its resting place here at the Djarlgarro. In return the Waugal will protect and provide for you."

Djarlgarro acted as a natural boundary between two Whadjuk clan groups: Munday's group to the north of Djarlgarro and Midgegooroo's group to the south. The river formed a natural track for Whadjuk people to traverse from the flat coastal plain to the hills as they moved between seasonal food sources.

As you walk the trails, keep an eye out for interpretive signage, sharing dreamtime stories and Noongar language.

Markets, Markets, Markets

Armadale's love for vibrant markets thrives, rooted in the proud legacy of immigrant farmers and orchardists. Embracing the farm-to-table ethos, today's markets overflow with fresh local produce straight from the growers' hands, alongside an array of handcrafted treasures created by talented locals.

Bedfordale Bush Markets

A country style market in the bush. Held on the second Saturday of the month from March through November. Each market is themed and showcases homegrown produce, arts and craft, nature play and entertainment.

Bedfordale Hall | Bedfordale

Roleystone Markets

This epic seasonal market is bursting with stallholders, entertainment, and food trucks. Held quarterly to embrace and celebrate the changing seasons, nestled among the valleys and orchards of Roleystone.

Cross Park | Roleystone

Piara Waters Market

A local community market with a fun and friendly vibe. Held every second Sunday, start your day with a hot coffee as you pick up fresh produce or browse locally made goodies.

Novelli Pavilion | Piara Waters

Armadale Market

Not your classic Sunday morning flea market, here you'll also discover a treasure trove of handmade crafts, unique artworks, and locally grown produce. Gold coin entry.

Harold King Community Centre | Camillo



Check perthhillsarmadale.com.au for the latest market dates and events.

Must do's for Art Lovers



Armadale Arts Festival

A creative program of live music, urban art, theatre, literature, and arts and crafts, all showcasing our incredible local talent. **(May)**



Armadale Highland Gathering and the Perth Kilt Run

Step into Highland culture at this unique celebration honouring the region's Celtic immigrants. Experience Scottish arts and crafts, lively Highland dancing, stirring pipe bands, a medieval fayre, and a strongman competition. And make sure not to miss the unforgettable *Perth Kilt Run* – a fun run where the competitors wear kilts! **Held annually in October.**

Armadale Hills Arts Trail

Journey into a fascinating world of creative discovery, as local artists invite you into their studios for an intimate glimpse into their inspiring spaces and creative processes. **(November)**



Roleystone Theatre

Catch a show! Dating back to the 1930s, the Roleystone Theatre has strong roots within the local community. They aim to host five shows annually, offering something for everyone – from seasoned theatre aficionados to those attending for the first time.

Creative Soul Sessions

Ready to unleash your inner artist? This cozy studio welcomes art enthusiasts to unwind, create, and connect over delicious food and good company. Whether it's a paint and sip, abstract art class or casual visit to the Art Bar, there's something for everyone.

Visit creativesoulsessions.com.au for class details and more information.



Armadale Society of Artists

Since its founding in 1987, the Armadale Society of Artists (ASoFA) has become a local hub for artists of all levels, offering workshops, classes, and annual exhibitions. Visiting their Art House at the Armadale Recreation Centre is a must for art lovers.

Visit armadalesocietyofartists.com.au for class details and more information.

I'm a Family Fun Seeker



Unplug and dive into family adventures, where the great outdoors beckons with endless fun. From thrilling bike tracks to nature-filled explorations, there's excitement for every age. Let your kids' imaginations soar at local playgrounds or embark on an animal encounter at Armadale Reptile Centre. Enjoy leisurely strolls and picnics in parks or add a touch of adventure with a geocaching treasure hunt.

Back to Basics

Say goodbye to screentime and hello to the great outdoors. In the Perth Hills Armadale, playtime is anytime. With great parks, playgrounds and picnic areas, there's always a family adventure waiting for you.

John Dunn Challenge Park

This state-of-the-art bike park caters to the fast-growing sports of BMX and mountain bike riding. It features pump tracks for beginner and advanced riders, jump tracks for beginner, intermediate and advanced PLUS there's a skills loop, bike safety track and a bike playground!



Rushton Park

Wide open spaces, shady trees and colourful playgrounds make this park an ideal spot for little explorers to play and discover surrounded by nature. Stretch your legs on a walk trail along the river.



Memorial Park

Let the little one's imaginations run wild on this railway themed playground, complete with a station cubby house, a rail bridge and even an authentic rail signal restored to its former glory!



Minnawarra Park

Much loved by locals, Minnawarra Park is well known for its greenery, serene atmosphere, and beautiful lake. Winding pathways around the lake are perfect for leisurely strolls or bike rides, as well as grassy areas ideal for picnics.



Migrant Park

Playtime with a side of history. The park was once the site of a migrant camp during the 1940s. Although the camps are long gone, an interpretive shelter celebrates its historical importance with interesting information about the lives of Kelmscott migrants and what brought them to Australia.



Borrello Park

A delight to visit in autumn, Borrello Park is home to many deciduous trees which create a gorgeous backdrop of golden hues as the leaves change colours. A modern playground provides plenty of scope for the imagination while the nearby stream is a highlight for nature play.



Shipwreck Park

Ahoy M'hearties! Climb aboard and sail the seven seas. This seafaring themed adventure playground will provide hours of fun with plenty of interactive and exciting discoveries to be made, for all ages and abilities.



Robot Park

This awesome playground offers a little bit of everything; nature play, water play, slides, a hamster wheel, climbing wall, flying fox and of course... a giant robot head!



Go Geocaching

What better way to explore the region and discover its natural beauty than on a geocaching treasure hunt? Pack a picnic, grab your smartphone, download the free Geocaching app, then stop by the Perth Hills Armadale Visitor Centre for information.

Nature Passport

The City of Armadale Nature Passport lists six locations and activities within the area, encouraging kids to play, create, imagine, and explore. Get messy with nature play at Rushton Park, create your own obstacle course at Robot Park or go on a scavenger hunt in Bungendore Park. The Nature Passport contains fun badges and stickers to journal your escapades. Collect yours from the **Perth Hills Armadale Visitor Centre**.

A day at Armadale Reptile Centre

Embark on an unforgettable adventure at the Armadale Reptile Centre. Get ready to encounter over 70 fascinating Australian species, including slithering snakes, majestic emus, and adorable wombats. Experience the thrill of up-close encounters during daily reptile handling sessions, perfect for adventurous kids and curious minds alike!

After your reptilian rendezvous, unwind in the park's picnic areas, complete with free BBQ facilities. Pack your favourite sandwiches and sausages and make a day of it!

Open daily from 10am-4pm
(closed Wednesdays except for during school holidays).

For the Bookworms

The City of Armadale is home to four fantastic libraries, providing the perfect place for a rainy day activity or for those in need of a little down time in between all the adventures.

11 Acre Farm

An absolute must for the perfect family day out. This delightful destination combines the charm of a working farm with the joy of a kids' paradise. Savour farm-fresh, seasonal dishes at the cozy cafe while the kids explore Cubby Lane—a whimsical world of cubby houses each offering a unique play experience. With friendly farm animals to greet and expansive grassy areas to run and play, it's a day full of joy and adventure for every member of the family.

Make a Splash

From the tiniest of tots to the biggest of big kids, there's a splash zone or pool suitable for all ages at our local pools. Armadale Fitness and Aquatic Centre is home to five heated pools as well as a water playground. It's the perfect spot to cool down on a hot summer's day. Pack a picnic and make a day of it for the whole gang.



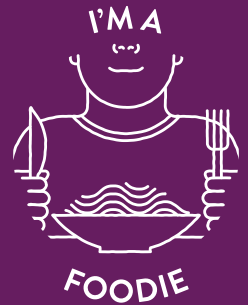
^ Upclose encounters at Armadale Reptile Centre

Let your
imagination
soar.



Robot Park is fun for the whole family ^

I'm a *Foodie*



Indulge your taste buds in a local food scene where the cuisine is as diverse as it is delicious. Start your day with a coffee and sweet treat at charming cafes, or dive into a hearty lunch at a traditional pub. For a refreshing break, sip on craft ciders or explore seasonal delights at local orchards.

Whether you're savouring a gourmet meal with stunning views or stocking up on picnic essentials, there's something to satisfy every craving in this culinary haven. Discover local flavours, enjoy picturesque settings, and embark on memorable foodie adventures.

Coffee and Cake – it's a date!

The Perth Hills Armadale is home to a bustling coffee culture, with quaint cafes and coffee shops to be found in just about every nook and cranny. For lovers of sweet treats and coffee connoisseurs, here's the round up on where to go.



Orchard Espresso

📍 21 Jarrah Road,
Roleystone



Cubby Cafe at 11 Acre Farm

📍 448 Nicholson Road,
Forrestdale



The Organic Circle

📍 Pioneer Village,
7 Albany Highway,
Armadale



Bean Thru

📍 89b Jull Street,
Armadale



The Pink Cafe

📍 1 Melody Street,
Kelmscott



Blue Sky Bread

📍 1 Soldiers Road,
Roleystone



That Plant Cafe and Bistro

📍 2 Page Road,
Kelmscott



Hidden Specialty Coffee

📍 21 Page Road,
Kelmscott



Masa and Co Cafe

📍 82 Champion Drive,
Seville Grove



Brook 508 Cafe

📍 508 Brookton Highway,
Roleystone

Breweries, Cideries and Restaurants



Serene sunsets at Seven Sins Perth Hills ^

Big adventures = rumbling tummies. The region is home to passionate brewers, chefs and culinary creatives. From classic pub lunches to French inspired dining, there's something to satisfy every palate.

Last Drop Elizabethan

The 'Lizzy' (as it's affectionately known by the locals) brings a touch of Tudor to our corner of the world, with its architecture inspired by traditional English style pubs of the past. Along with crafting their own beer, they serve up mouthwatering pub classics. Sampling the beef and beer pie is a must!

📍 25 Canns Road, Bedfordale

Seven Sins Perth Hills

If you're after dinner with a view, this is the place. The restaurant sits perfectly atop a giant granite outcrop, with enchanting views out to the surrounding valley. It's absolutely stunning at sunset and Chef Seb serves up contemporary creations using the finest ingredients Western Australia has to offer.

📍 1 Soldiers Road, Roleystone

Avocados Cafe

Family-friendly fun awaits. As well as delicious meals and kid-friendly options, Avocados is a haven for kids with expansive grounds to run and explore, plus a safe enclosed playground for little ones. Located on the banks of the Canning River, grown-ups will enjoy views out to the river as it changes throughout the seasons.

📍 2 Mount Street, Kelmscott

Roleystone Club

Serving up good times since 1972. Take in breathtaking views of Roleystone, dining at Windows on Wygonda restaurant and patio. This family-friendly community venue offers a variety of activities such as lawn bowls, darts, pool, and regular sessions from the local Musicians Club, plus a kid's area and two playgrounds to keep the kids entertained.

📍 6 Wygonda Road, Roleystone

That Plant Cafe & Bistro

Cafe by day, fine dining by night. The French inspired menu is sure to impress even the most distinguished of diners, with options like pan seared scallops, steak frites, lobster and Halls Suzette gracing the table.

📍 2 Page Road, Kelmscott

Naked Apple Cider

Set amongst 6.4 hectares of gardens and enchanting native forest, this award-winning, family-friendly venue is somewhere you can kick back, relax and take a big gulp of the serenity. Of course, you'll have to try a tippie or two of their locally brewed cider – we recommend the tasting paddle for the full experience.

📍 1088 Brookton Highway, Karragullen

Go behind the scenes at McRobert Distillery

Did you know Armadale is home to a whiskey, gin and vodka distillery? It's fair to say distilling runs through the blood of the McRobert family with their ancestral links to a Master Distiller, William John McRoberts, (born 1824). At age 21, William travelled from Ireland to America where he made his mark on the Cincinnati distilling scene during the mid-1800s.

Today, walking in their ancestors' footsteps, the McRobert family combine a union of quality local ingredients, traditional time-honoured methods, science, art and passion to craft their own unique Western Australian spirits, right here in Armadale.

Book a tasting tour and discover the grain to glass journey on a behind the scenes tour of the distillery. Tours run daily from 12-5pm. Bookings essential 1800 335 564.

📍 17 Stone Street, Armadale

Picnic Pit Stop

Every good road trip needs a pit-stop and our favourite is **Hills Emporio** in Karragullen. This humble roadhouse offers more than your regular staples of fuel and coffee – though they have those too! Fill up your picnic basket with local delights, including fresh rolls and sandwiches, jerky, jams, cheese and honey.

Seasonal Splendour in the Orchard

The colours and bounty of the local countryside change with the seasons. There's no better way to experience these picturesque transformations than on a stroll through the region's orchards, where seasonal blooms and blossoms present wonderful photo opportunities. Take a leisurely amble through Raeburn Orchards in Roleystone, where you can buy seasonal fruits, jams and preserves. For the best photo opportunities, visit during spring or autumn.

What's in season?



Summer

Fruit trees are lush and green, perfect for picnics amongst the shade. Stone fruit season sees peaches, nectarines, pluots and apricots ripen to perfection, filling the air with their sweet aromas.



Autumn

The orchards transform into a sea of fiery red and amber hues as persimmon trees shed their leaves in preparation for winter. Pomegranates and persimmons are the stars of the season, sweet, delicious and a spectacular sight.



Winter

Citrus season shines during the cooler weather, with oranges, lemons and mandarins reaching their peak. Many fruit trees lay dormant during the winter, but the orchard still provides a beautiful place for a winter walk, surrounded by the lush green of the surrounding countryside.



Spring

A season of renewal and breathtaking beauty, as stone fruit trees burst into full blossom. From September to November the orchards become a haven for photographers and nature lovers. Soft, juicy pears are in season along with avocados and apples.



^ Stunning autumn hues at Raeburn Orchards

Calendar of Events

Birak

December

City of Armadale Carols by Candlelight and Christmas Parade



An annual Christmas tradition, join in the festive spirit of the holiday season at this family-friendly event. Revel in the amazing community spirit that we have here in Armadale and celebrate this joyous period at one of Perth's most accessible carols events.

Roleystone Christmas Markets

Fill up your Christmas stockings and hampers with a visit to our favourite festive market. You'll find a treasure trove of handpicked stalls full of local goodies sure to delight, there might even be a visit from Santa himself.

January

Australia Day in Armadale – Alcohol Free



Embrace the spirit of Australia Day in Armadale! Join us for a day brimming with festivities, activities, and a true-blue Aussie atmosphere.

Bunuru

February

Roleystone Summer Markets



Indulge in a unique shopping experience amidst the serene bushland setting of Cross Park. Discover hand-picked stalls offering artisanal delights and local crafts that showcase the essence of Roleystone.

March

Bedfordale Bush Markets (March through November)



Enjoy an authentic country-style market, showcasing local produce, food stalls, arts, crafts and entertainment. Held on the second Saturday of the month from March through November. Each market is themed – check closer to the date for more info.

Djeran

April

Roleystone Autumn Markets

A beautiful time of year to visit the hills, as the leaves on deciduous trees put on a display of fiery and golden hues. Pick up seasonal produce, wares and delicious food as you enjoy the ambiance of Cross Park.

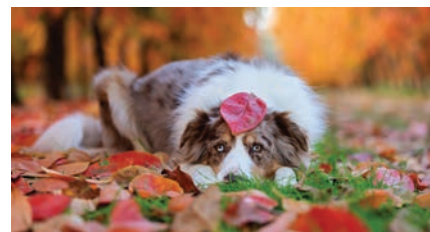
May

Armadale Arts Festival – venues throughout the region



Unleash your creativity at the Armadale Arts Festival! From dynamic live performances to cutting-edge urban art and literary gems, immerse yourself in a whirlwind of artistic expression. Dive into the details at armadaleartsfestival.com.au

Raeburn Orchards – Persimmon Season



May sees Raeburn Orchards transform into a sea of bright crimson and orange. Have a wander through this Instagram hotspot and check out the packing shed to purchase local fruit and produce direct from the source.

Head to perthhillsarmadale.com.au for all the latest events and up to date information.

Makuru

June

Piara Waters Markets

Every second Sunday throughout the year, these vibrant markets offer local produce, artisan food and crafts from local creatives. Make this your Sunday morning breakfast date.

Take a Hike

Hit one of the numerous hiking trails and enjoy this beautiful season in nature. Venture out along stream trails such as Wungong Gorge or Roley Pools Reserve or delight in one of the higher scarp trails such as Honeyeater Hike in Bungendore Park.

July

NAIDOC Week – Community Festival



Join us in honouring the rich culture, music, and achievements of Aboriginal and Torres Strait Islander peoples at the NAIDOC Community Festival held at Bob Blackburn Reserve in Seville Grove.

Christmas in July



This charming winter ritual is simply a reason for celebration, to partake in festive traditions and seasonal entertainment in the cooler, cosier months. Keep an eye out for winter roasts and yuletide events at venues across the region.

Djilba

August

Spring into Armadale (August to November)

Enjoy the crisp spring air and explore a diverse lineup of events in Armadale. Embrace the charm of our region before the summer heat arrives, with activities and experiences that capture the essence of the season.

Yates Springtime at Araluen Tulip Festival (August – September)



Delight in the spectacular sight of 170,000 tulips in full bloom. Enjoy entertainment, delectable cuisine, and soak in the breathtaking scenery of Western Australia.

Outside the Frame Art Awards

Celebrate Perth's young emerging artists and their thought-provoking works at the Outside the Frame Art Awards Exhibition, a showcase of contemporary artistry set in the historic Armadale District Hall.

September

Roleystone Spring Markets

Celebrate the spirit of spring at Roleystone's bustling market. Enjoy crafts, fresh produce, live entertainment, food trucks, and engaging activities for all ages amidst the picturesque Cross Park setting.

Raeburn Orchards – Spring into Raeburn

September brings beautiful pink and white blossoms to Raeburn Orchard. Be sure to visit and snap some beautiful photos with your loved ones!

Kambarang

October

Armadale Highland Gathering and the Perth Kilt Run



Celebrate all things Scottish at the largest Highland Gathering in Western Australia! Experience Highland games, pipe band competitions, a medieval fair, heavy events, family entertainment, and the unique Perth Kilt Run. Head to perthkiltun.com.au for more information.

Kelmscott Agricultural Show

Savour the delights of the traditional Kelmscott Show. From show bags to thrilling rides, markets, animal exhibits, and dazzling fireworks, there's something for everyone.

Armadale Society of Artists Annual Arts Awards Exhibition



This popular annual art awards exhibition showcases local artworks including textiles, sculpture, woodwork and photography at the Armadale District Hall. Prepare to be wowed!

November

Armadale Hills Arts Trail

Discover the creative pulse of Armadale. Step into the studios of local artists, gain insight into their creative processes, and witness their works first-hand. Head to armadalehillsartstrail.com to find out more.

Visitor Map

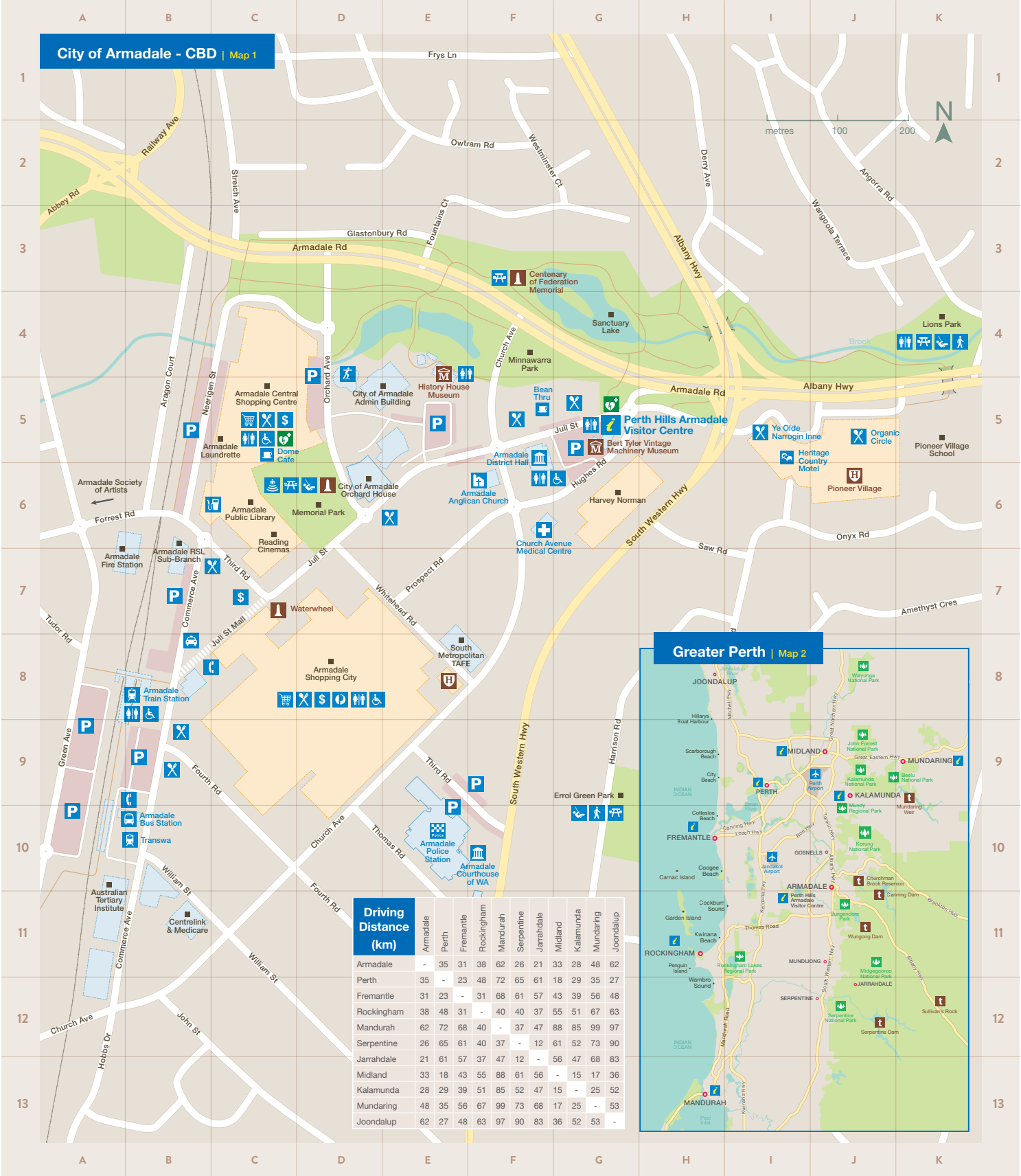
Perth Hills Armadale

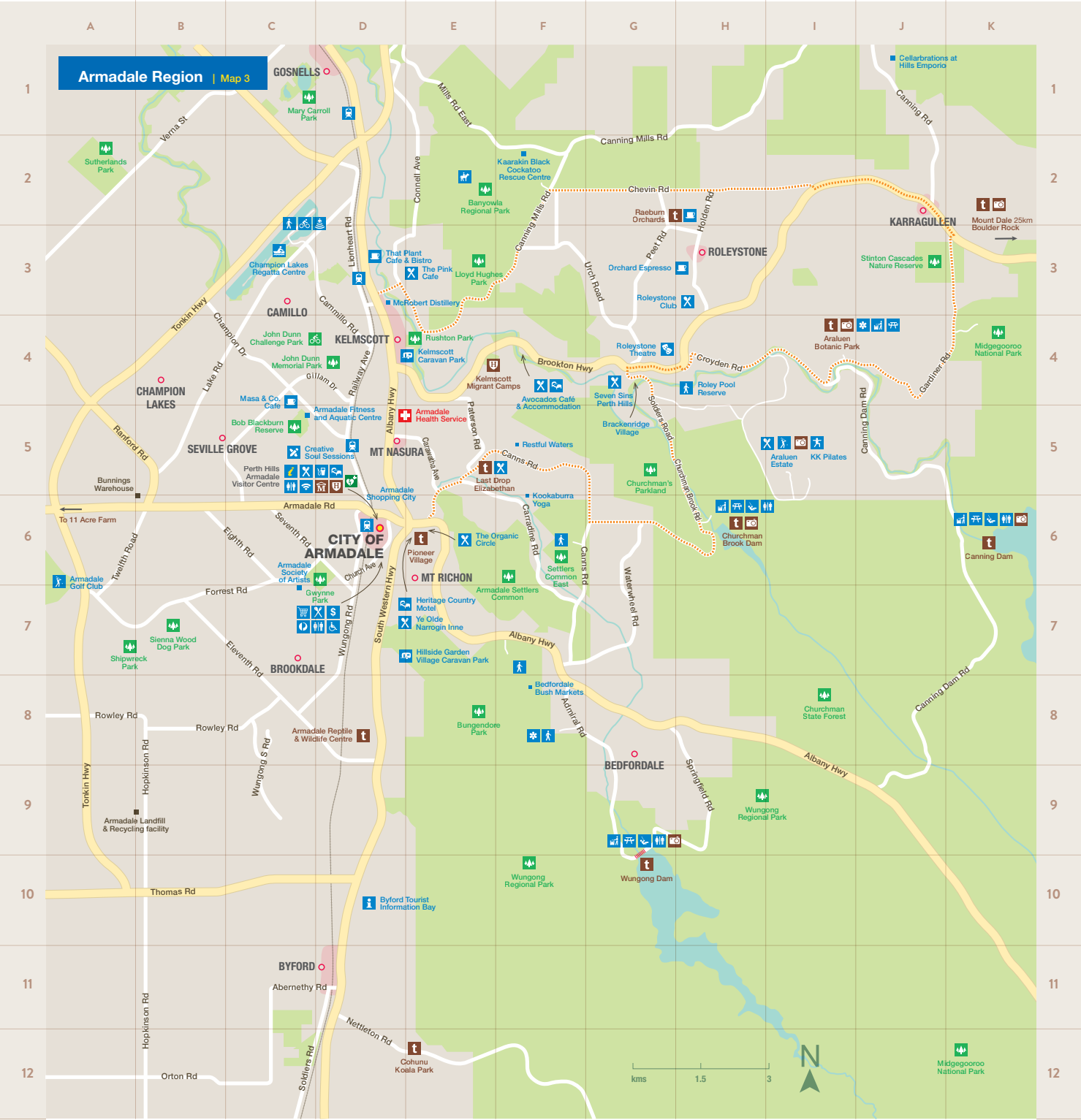


40 Jull Street Armadale WA 6112
W: www.perthhillsarmadale.com.au
T: +61 (08) 9394 5410



Monday to Friday: 9am - 4pm
Saturday & Sunday: 9am - 2pm
CLOSED: Easter Friday, Christmas Day, Boxing Day and New Years Day





Legend

Visitor Centre

Information Bay

Public Toilet

Hospital

Train Station

Caravan Park

RV Dump Point

Petrol Station

Accommodation

Restaurant

Cafe

Winery

Amphitheatre

Theatre

Regatta Centre

Golf Course

Horse Riding

Walk Trail

Bike Trail

Picnic Area

Barbecue

Playground

Botanic Park

National Park

Tourist Attraction

Museum

Historic Site

Photo Opportunity

Major Road

Road

Scenic Drive

Dam / Brook

Reserve / Park

Useful numbers

Ambulance, Police and Fire 000

Armadale Police Station 08 9399 0222

Perth Hills Armadale Visitor Centre 08 9394 5410

Wildcare Helpline 08 9474 9055

Western Power 13 13 51

Transperth InfoLine 13 62 13

Driving Distance (km)

Distance by road from Perth Hills Armadale Visitor Centre.

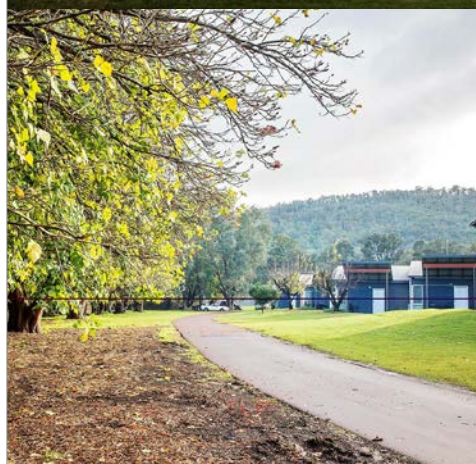
Armadale Region	Map	Km	Outside Region	Map	Km
Araluen Botanic Park	3, I4	13	Fremantle	2, H10	32
Armadale Reptile Centre	3, D8	3	Jarrahdale	2, J12	25
Bungendore Regional Park	3, F8	5	Jarrahdale PO & General Store	2, J12	25
Canning Dam	3, K6	17	Mandurah	2, H13	61
Champion Lake Regatta Centre	3, C3	8	Mundaring	2, K9	47
Churchman Brook Dam	3, H6	8	Mundijong	2, J11	17
Cohunu Koala Park	3, D12	11	Mt Dale	3, K2	42
Karragullen	3, J2	16	Perth CBD	2, I9	38
Roley Pool Reserve	3, H4	12	Perth International Airport	2, J9	26
Settlers Common Walk Trails	3, F6	1	Perth Hills Kalamunda	2, J9	26
Wungong Reserve & Gorge Trail	3, G10	9	Rockingham	2, H11	38
			Serpentine	2, J12	26
			Serpentine Dam	2, J12	34
			Serpentine Falls	2, J12	27
			Sullivan's Rock	2, K12	37

Valid from September 2024

perthhillsarmadale.com.au

39

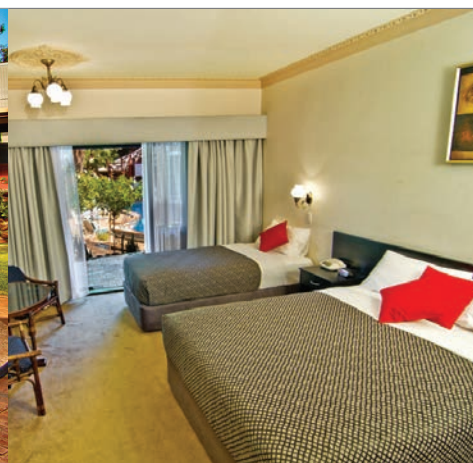
Accommodation, Dining and *Experiences*



AVOCADOS PERTH

Come visit our café or stay in our secluded chalets located on the banks of the Canning River. Our spacious grounds are surrounded by bushland and the river comes alive with native birds. The beautiful gardens and native flora offer the perfect place to relax and recharge. We also offer a variety of spaces for functions, weddings, and events, making us one of the most unique all-in-one venues in the Perth Hills.

Address: 2 Mount Street, Kelmscott
Phone: (08) 6496 0138
Email: brad@avocadosperth.com
www.avocadoscafebar.com.au



HERITAGE COUNTRY MOTEL

Nestled in the foothills of Armadale, the Heritage Country Motel is the ideal place to base your next stay in Perth. Escape from the hustle and bustle of the city and base yourself at our tranquil motel just 27km south east of Perth. Most units have French doors that open onto delightful gardens and pool area, perfect to relax and recharge.

Cnr Albany Hwy & Southwest Highway, Armadale
Phone: (08) 9399 5122
Email: info@heritagecountrymotel.com.au
www.heritagecountrymotel.com.au

HERITAGE COUNTRY MOTEL
 ARMADALE





HILLSIDE GARDEN VILLAGE

Picturesque, quiet location in the foothills of Perth.

Bus stop at doorstep, train station and major shopping centre nearby.

Safe, secure, well maintained sites with all amenities at very competitive prices. Powered sites and 1 & 2 Bedroom Villas available.

270 South Western Highway, Mt Richon

Phone: (08) 9399 6376

Email: hillsidegardenvillage@yahoo.com.au

www.hillsidegardenvillage.com.au



PERTH HILLS ARMADALE VISITOR CENTRE

Escape the hustle of the city to discover wide open spaces and sweeping views. Play, stay and explore in the Perth Hills.

Visit the Perth Hills Armadale Visitor Centre on Jull Street to begin your adventure. We'll help you plan your getaways and local day trips, and stock up on local goodies and souvenirs while you're at it.

Address: 40 Jull Street, Armadale

Phone: (08) 9394 5410

www.perthhillsarmadale.com.au

EXPERIENCE
**PERTH
HILLS**
ARMADALE



ARALUEN ESTATE

Nestled in the picturesque Perth Hills, lies Araluen Estate. Home to the Enchanted Valley, this forest estate offers so much more than just beautiful gardens and breathtaking views. It's the perfect destination for the discerning golfer, visiting golf groups, conference delegates, private celebrations or wedding couples! Presenting monthly music and community events for everyone to experience the magic of the Enchanted Valley.

Country Club Ave, Roleystone

Phone: 9397 9000

Email: functions@araluenestate.com.au

www.araluenestate.com.au



ARALUEN BOTANIC PARK

Rich in heritage and culture, Araluen Botanic Park is Perth Hills' oldest botanic park. Circa 1930s, the 14 hectare cultivated gardens is nestled in the serene bushland setting of native Eucalyptus and Marri Trees. The garden precincts, stoned terraces and huge jarrah pergolas create a magnificent environment for the exotic flowers, collections and annual spring tulip blooms.

362 Croyden Road, Roleystone

Phone: (08) 9234 2200

Email: info@araluenbotanicpark.com.au

www.araluenbotanicpark.com.au





ARMADALE SOCIETY OF ARTISTS

We are a community-based Art Society offering a variety of classes and informal social groups, workshops, and exhibitions.

Visitors are welcome to view our members' artworks on display in our Art House gallery or our online gallery.

Follow us on Facebook or visit our website for current classes, artwork locations, events, and exhibitions.

Email: enquiries@armadalesocietyofartists.com.au

Facebook: [armadalesocietyofartists](https://www.facebook.com/armadalesocietyofartists)

www.armadalesocietyofartists.com.au



CREATIVE SOUL SESSIONS

Creative Soul Sessions is an Art Studio, Café and Art Bar. We offer affordable experiences in the Armadale area. Visit our popular art bar, book a birthday party or workshop. Enjoy bespoke events or buy gifts made by local artisans. Our eclectic space is set for good vibes, fun times and delicious food. ART – FRIENDSHIP – FOOD

2/42 Challis Road, Armadale

Email: creativesoulsessions14@gmail.com

www.creativesoulsessions.com.au





REDISCOVER ARMADALE URBAN ART TRAIL

#ReDiscoverArmadale on a self-guided walking urban art trail through Armadale's town centre. Discover colourful, large scale murals featuring the works of Askew One, Lisa King, Bradley Kickett, Tahnee Kelland, Creed Birch and Matt Adnate. Start your walk at the Perth Hills Armadale Visitor Centre to pick up maps, guides and local insider tips.

40 Jull Street, Armadale
Phone: (08) 9394 5410
visitorcentre@armadale.wa.gov.au
www.perthhillsarmadale.com.au



STORYTOWNS

Discover Armadale's hidden gems, heritage, and stories on a self-guided driving audio tour through the region.

Download the Storytowns app to listen to mini-podcasts featuring Armadale locals as they share insider stories and tips only the locals know! Thanks to the unique Storytowns app the podcasts automatically play as you travel, no need for QR codes or fiddling with your phone!



STORYTOWNS
audio guides in your pocket

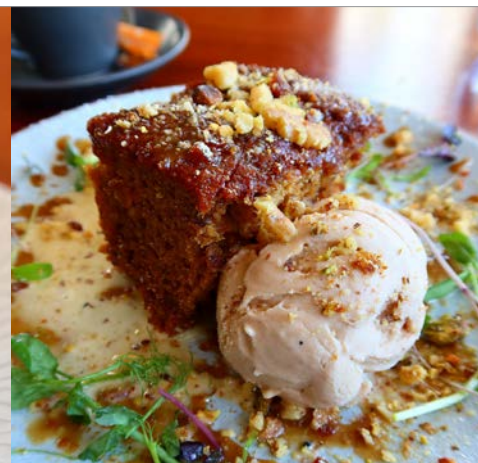


ORCHARD ESPRESSO

Roleystone's Best Little Gem! Orchard Espresso, a family owned cafe located in Perth Hills owned and managed by couple Sonu and Ruta, is a place where you get unique and unforgettable dining experience.

Our team of experienced chefs and Baristas assure a lip-smacking meal everytime you order. The passion in them for cooking reflects in the perfection of the meals served.

7/21 Jarrah Road, Roleystone
Phone: (08) 9397 7370
Email: orchardesspresso088@gmail.com
www.orchardesspresso088.com.au



SEVEN SINS PERTH HILLS

Residing in a gorgeous location among the Perth Hills, Seven Sins restaurant is a family-owned restaurant that specialises in a diverse menu that incorporates flavours from around the world. Enjoy our generously portioned lunches and dinners alongside craft beers and local wines, while overlooking the beautiful Roleystone Valley. We utilise the finest ingredients WA has to offer to bring you an incredible dining experience.

1 Soldiers Road, Roleystone
Phone: 0439 955 042
Instagram: [@sevensinsperthhills](https://www.instagram.com/sevensinsperthhills)
www.sevensinsperthhills.com.au





BERT TYLER VINTAGE MACHINERY MUSEUM

Come and discover a rare collection of twentieth century engines, including a large woodworking bandsaw that was used in the Western Australian ship building industry in 1876.

The replica Post Office contains early telegraph and other communications equipment.

40 Jull Street, Armadale

Phone: (08) 9394 5410

www.perthhillsarmadale.com.au



ARMADALE REPTILE AND WILDLIFE CENTRE

The Armadale Reptile and Wildlife Centre houses a large variety of native reptiles and other Australian wildlife with over 70 different species on display including snakes, turtles, fruit bats, kangaroos, dingoes and parrots. Open 10am to 4pm daily, closed Wednesdays except during school holidays.

308 South Western Highway, Wungong

Phone: (08) 9399 6927

www.armadalereptilecentre.com.au





ROLEYSTONE THEATRE

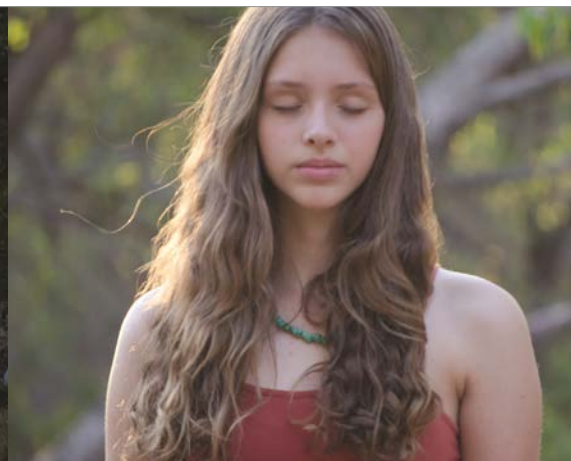
The Roleystone Theatre Inc., established in 1933, is a vibrant community theatre group operating out of a brand-new theatre building, nestled in the Roleystone Hills. We present 5 seasons each year (plays and musicals, as well as concerts and workshops). Please check our website or socials for details. The Roleystone Theatre building is also available to hire as a performance facility.

587 Brookton Hwy, Roleystone | Phone: 0491 672 172

Email: secretary@roleystonetheatre.com.au

Email: tickets@roleystonetheatre.com.au

www.roleystonetheatre.com.au



KOOKABURRA YOGA

Discover a sanctuary of peace and calm in the Perth hills. Kookaburra Yoga is a gorgeous venue for yoga and meditation set amongst the trees in the heart of nature. Choose from a world-class program of peaceful, nurturing classes, one-day retreats, longer retreats, yogic sound healing, weekend yoga and healing events, yoga teacher training. Everyone is welcome at Kookaburra Creek.

Address: 210 Carradine Road, Bedfordale

Bookings & enquiries: info@kookaburrayoga.com

www.kookaburrayoga.com



Kookaburra Yoga
YOGA IN HARMONY WITH NATURE



EXPERIENCE
**PERTH
HILLS**
ARMADALE



PERTH HILLS ARMADALE VISITOR CENTRE

40 Jull Street, Armadale WA 6112

+61 (08) 9394 5410

visitorcentre@armadale.wa.gov.au

perthhillsarmadale.com.au