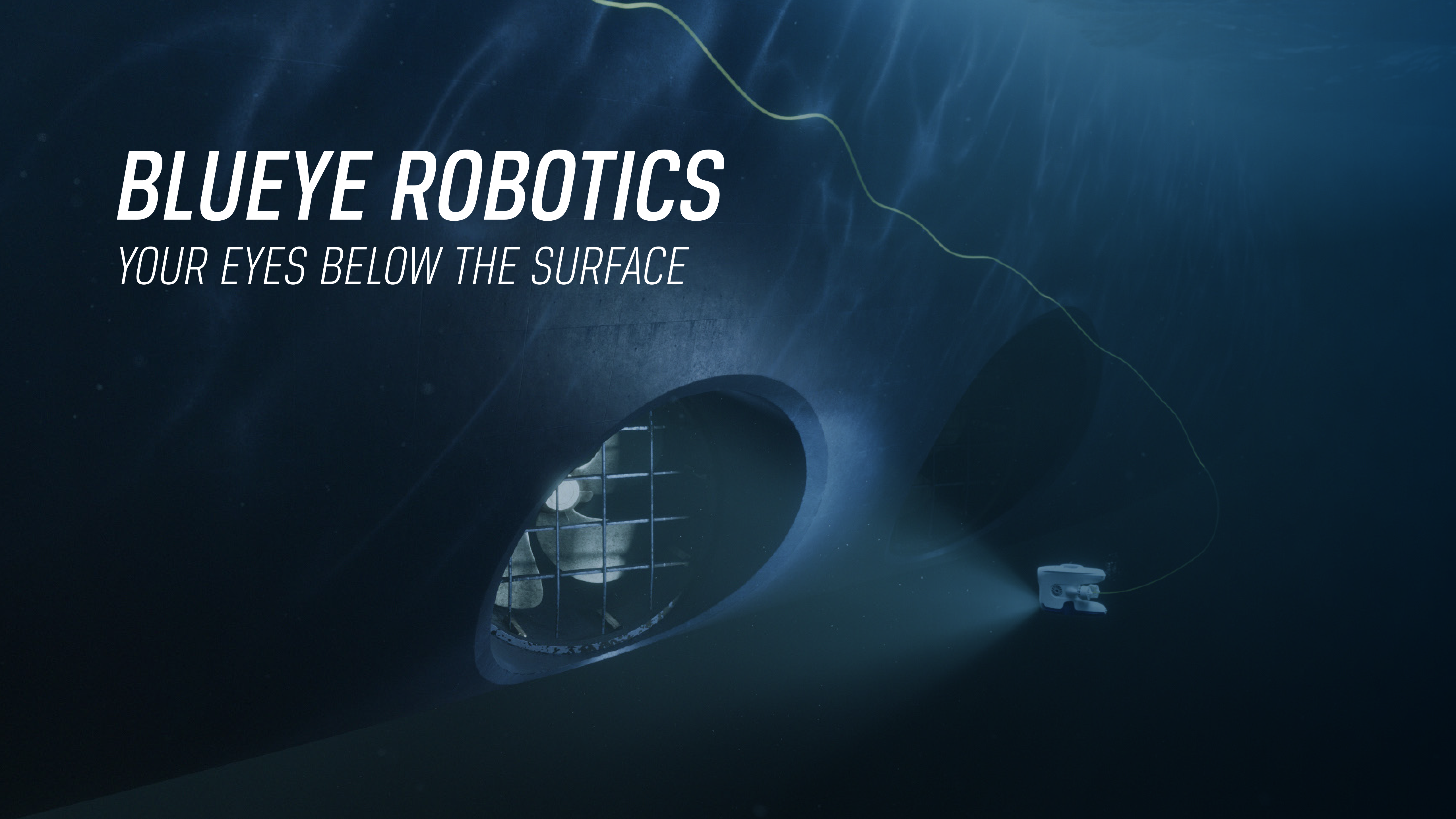


BLUEYE ROBOTICS

YOUR EYES BELOW THE SURFACE



BLUEYE ROBOTICS

- Spin-off from the Center for Autonomous Marine Operations and Systems (AMOS) at NTNU.
- A passionate team of **20+ international experts** in various fields such as software, cybernetics, mechanical and industrial design, underwater robotics, marketing and business development.



Norway



USA



Spain



Germany



Bulgaria



India

- Development, design, testing, production, support and service **in Norway**.





OUR VISION

To empower people and organizations with
user-friendly underwater technology.

OUR MISSION

By challenging the status quo, we want to create the most user-friendly and reliable underwater technology to provide people and organizations frictionless access to what's below the surface.



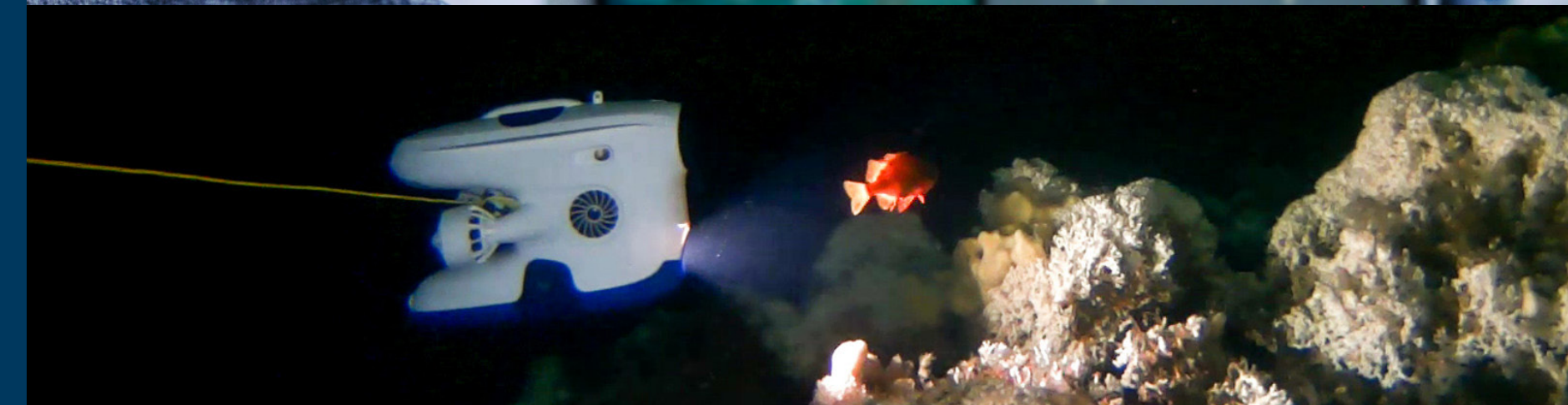
A SEAMLESS CUSTOMER EXPERIENCE

Blueye provides a **frictionless customer experience** for professional underwater inspections. We help our customers **evaluate conditions, perform work, follow regulations, report** to stakeholders, and **increase safety** for underwater operations.

We develop and **continuously update** hardware and software with the **user in mind**, and innovations are triggered by **customer feedback**. Our products and services are **built to last**, and they are easy to use and maintain, backed up by our internal goal of **0 returns** and an average **support satisfaction score of 95%**.

THE IMPACT OUR SOLUTIONS HAVE

- Reduce mortality rates and escapes
- Reduce fouling, downtime and fuel consumption
- Improve HSEQ for divers
- Improve safety and quality of drinking water
- Reduce need to travel for inspections
- Help researchers monitor and sample



HELPING OUR CUSTOMERS SUCCEED IN THEIR OPERATIONS

«Equinor saves one million NOK, every time we can spare the hire of a big offshore vessel for these types of inspections.»



«To reduce time and costs of hull inspections we are currently piloting an underwater drone from Blueye on two vessels. With Blueye's technology we can perform more frequent hull inspections and make better visually informed decisions on the vessel's need for hull/propeller cleaning.»



«An underwater capacity like this makes us better equipped to search for and secure documentation. For instance, we can use it to search for missing bodies, document pollution, or find dumped items.»



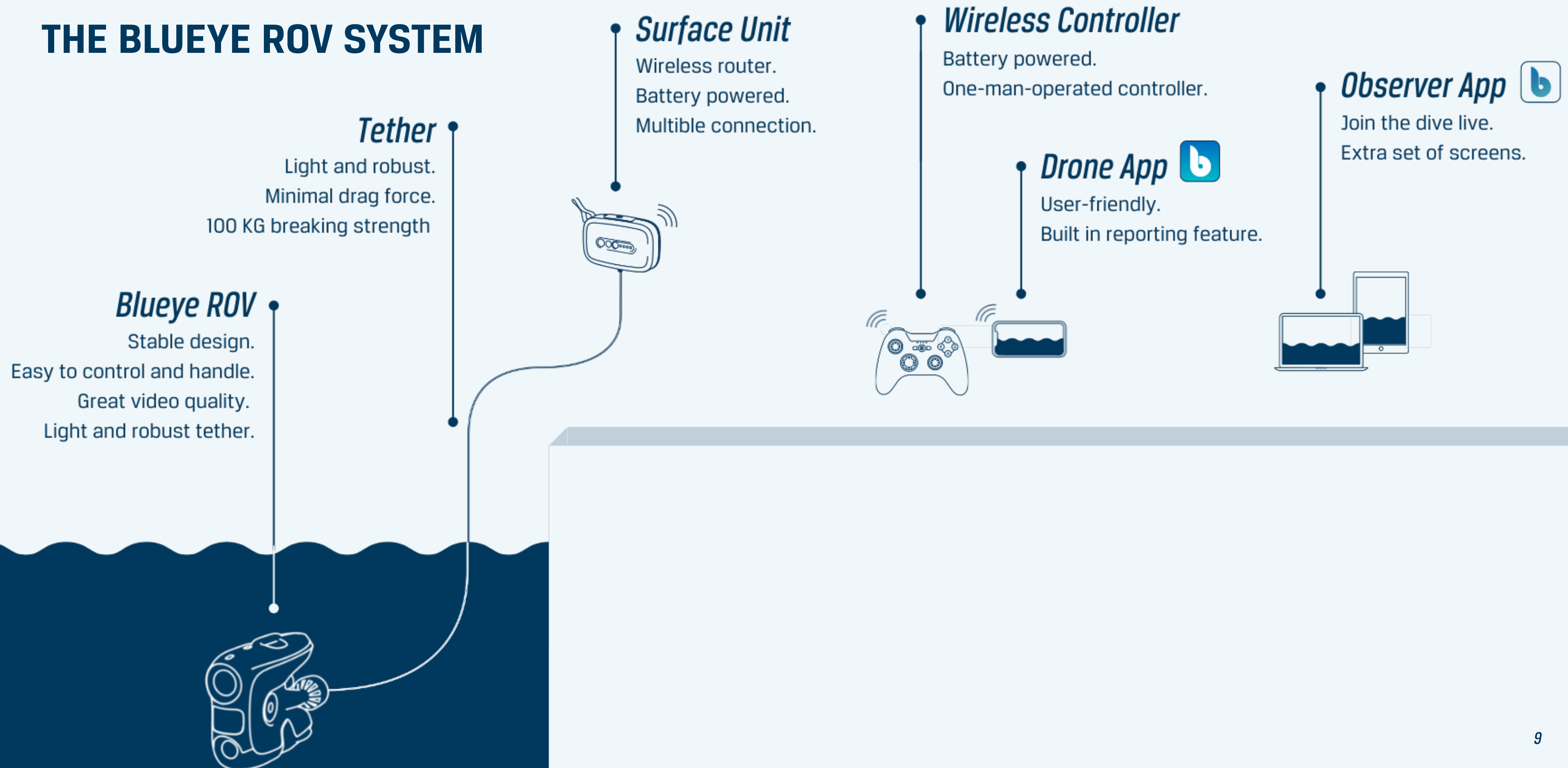
«UW drones is a subject in every monthly meeting with our regional leader. It's not nice to have new technology anymore, it's a tool that is needed on every location to do the job.»



«These tools are essential. They open up a new world for the students.»



THE BLUEYE ROV SYSTEM





THE BLUEYE ROV SYSTEM / KEY POINTERS

- **Easy and flexible system** to setup, use and maintain
- **Wireless** communication on the surface.
- Unique, robust, and **stable design** for optimal performance.
- **Continuous updates** in hardware and software.
- Options for **attaching external equipment** such as sonars, sensors, manipulators, and positioning systems.
- **Live stream** to remote viewers via Microsoft Teams.

FACTORS TO EVALUATE WHEN CONSIDERING AN ROV FOR YOUR BUSINESS

- What kind of **training** is necessary to operate the vehicle?
- What does **downtime** cost if my ROV doesn't work?
- What is the **life cycle cost** (LCC) of the ROV?
- What is the accessibility of **spare parts**?
- How fast can I get **support or service** on my ROV?
- For what different **tasks** can I utilize the ROV?



LET US HELP YOU SUCCEED

Our drone experts are **always eager to help** businesses perform operations faster, cheaper and safer.

With years in the ROV market, we have significant experience in how different businesses and research institutes use and benefit from their underwater drone.

Reach out to one of our team members for **a short meeting or demo**. The meeting or demo is, of course, **without obligations**.



A person with long hair, wearing large headphones, is seated at a desk in a dimly lit office. They are looking at a large Samsung monitor displaying a code editor with a dark theme. The code is written in a language that appears to be Python, with various function definitions and comments. The person's hands are on a keyboard. In the background, another person is visible, and a "blueye" logo is on the wall. The overall atmosphere is focused and professional.

BLUEYE PRODUCTS

SOFTWARE STACK

UPGRADEABLE SOFTWARE

All Blueye software components are end-user upgradable in a user-friendly manner. This allows us to solve issues and improve the product after the customer receives it.

This is a competitive advantage over professional ROVs lacking this capability or where the frequency of software improvements is low.



SOFTWARE DEVELOPED BY BLUEYE

Today, the Blueye Software Stack consists of the following core components:

Blueye App: iOS and Android app to control and configure the drone and surface unit.

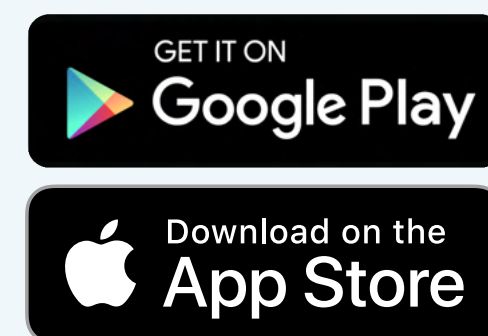
Blueye Observer App: iOS and Android app allowing multiple spectators to view the video stream.



Blueye App



Blueye Observer App



File Transfer App: macOS, Windows, and Linux applications allow users to download media files to their computers.

Blueye SDK: Software library and documentation to allow third parties to integrate with the drone.

Blunux: The internal code name for the OS running on the drone, consisting of a control system, logging and telemetry, embedded firmware, video streaming, and much more.



Blueye File Transfer App



Blunux Operating System

blueye SDK

BLUEYE SDK

The **Blueye Software Development Kit** provides documentation, software libraries, and example code showing how to control the Blueye Pioneer, Pro, or X3, as well as download media files and log files.

The SDK will enable enterprise customers to write their software to download and process the information and data gathered using the drone.

Open Blueye SDK on GitHub

(<https://blueye-robotics.github.io/blueye.sdk>)

SYNC AND SHARE DIVE LOGS AND REPORTS

1. Inspect

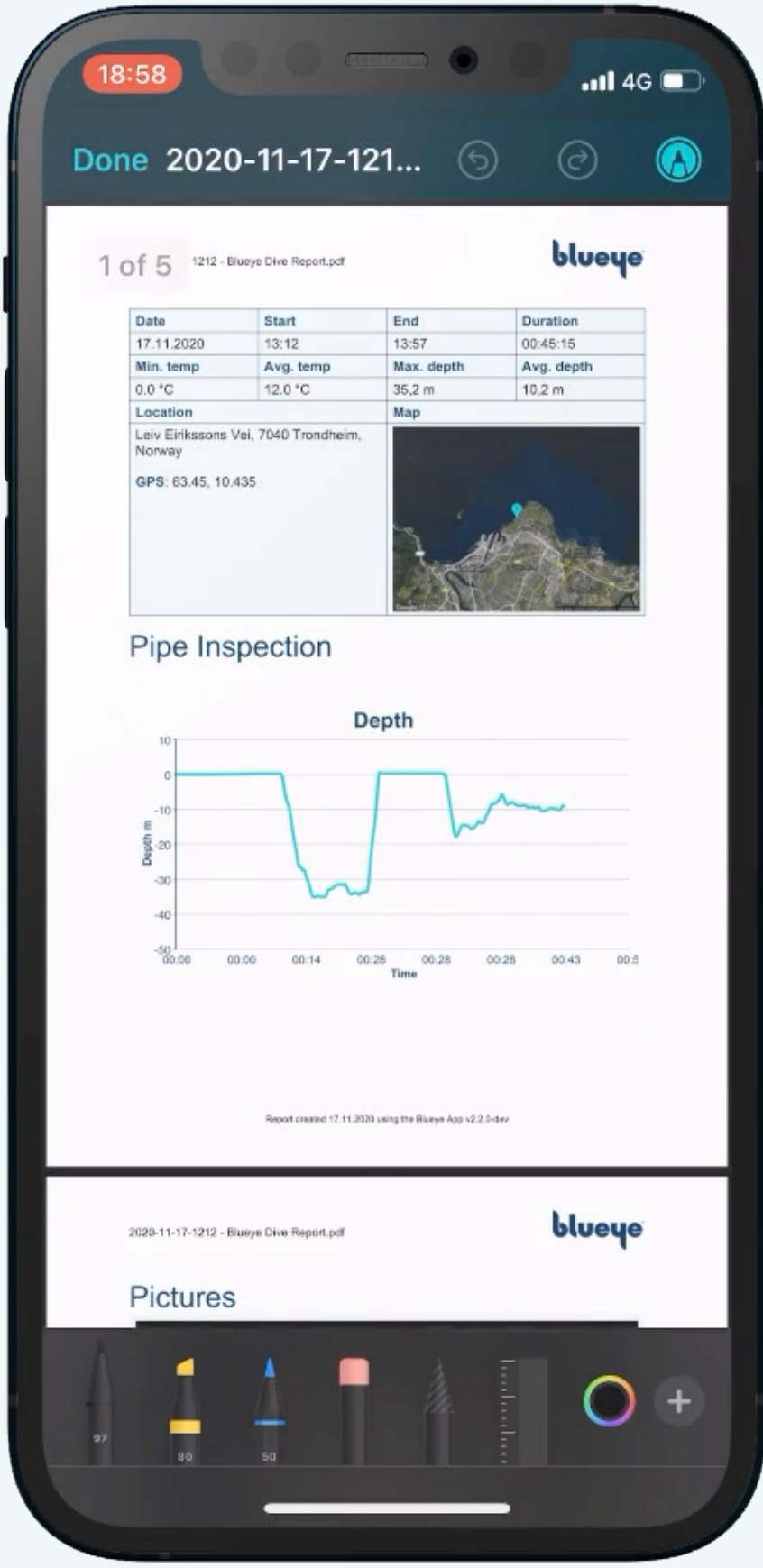
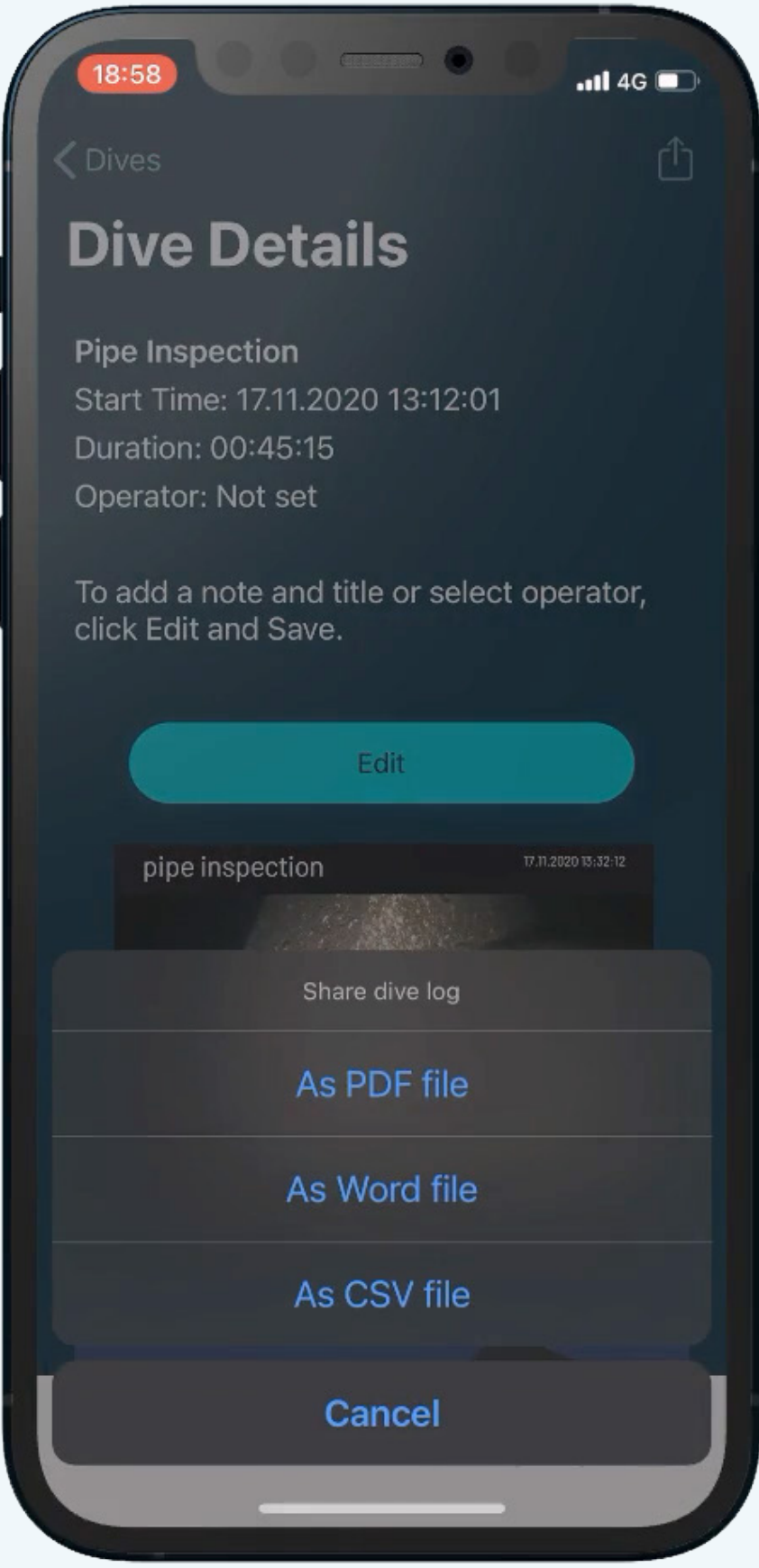
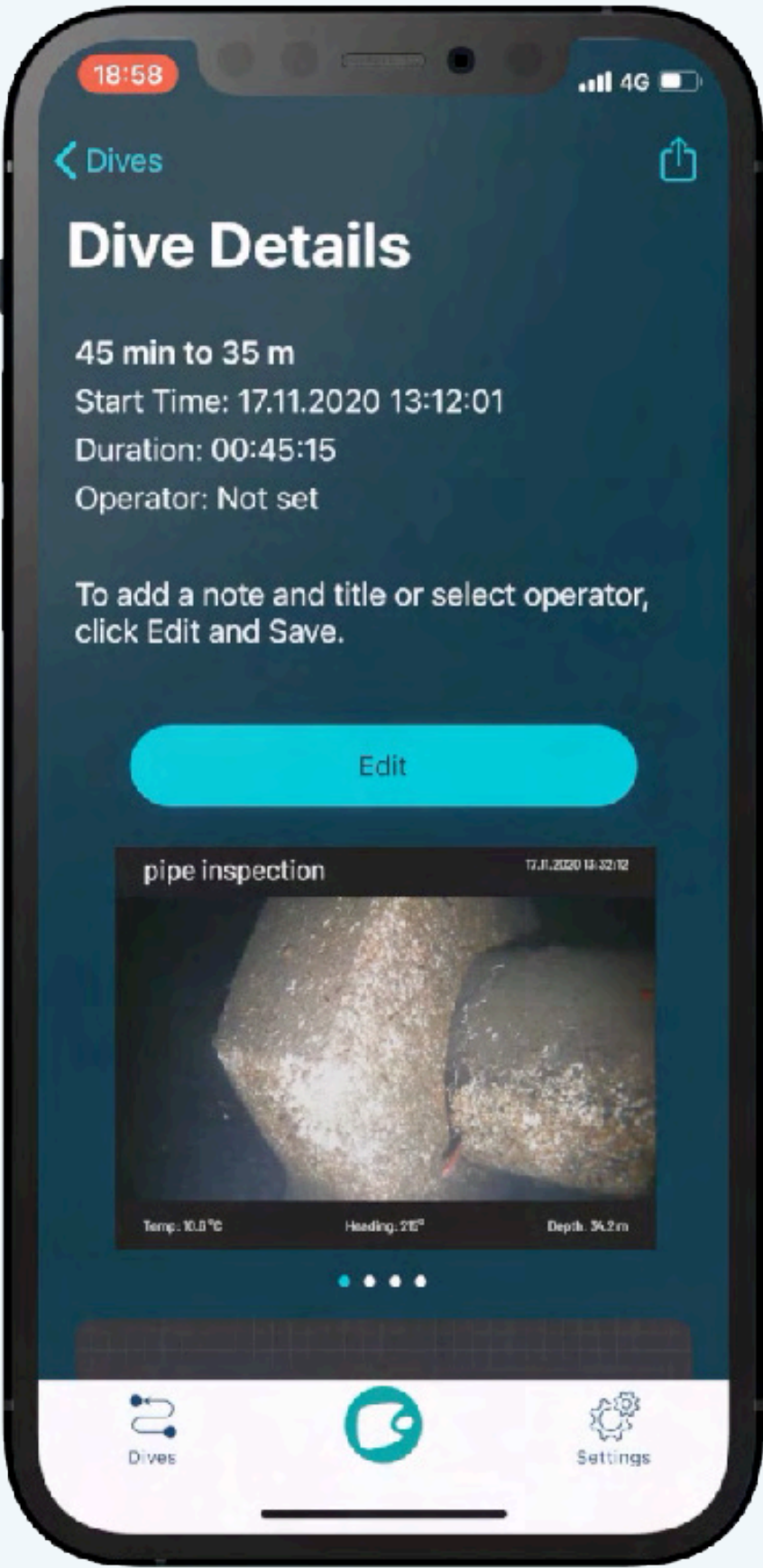
Complete your inspection.
Check the Dive Details.

2. Export

Export the dive data as PDF,
Word og CSV file.

3. Share

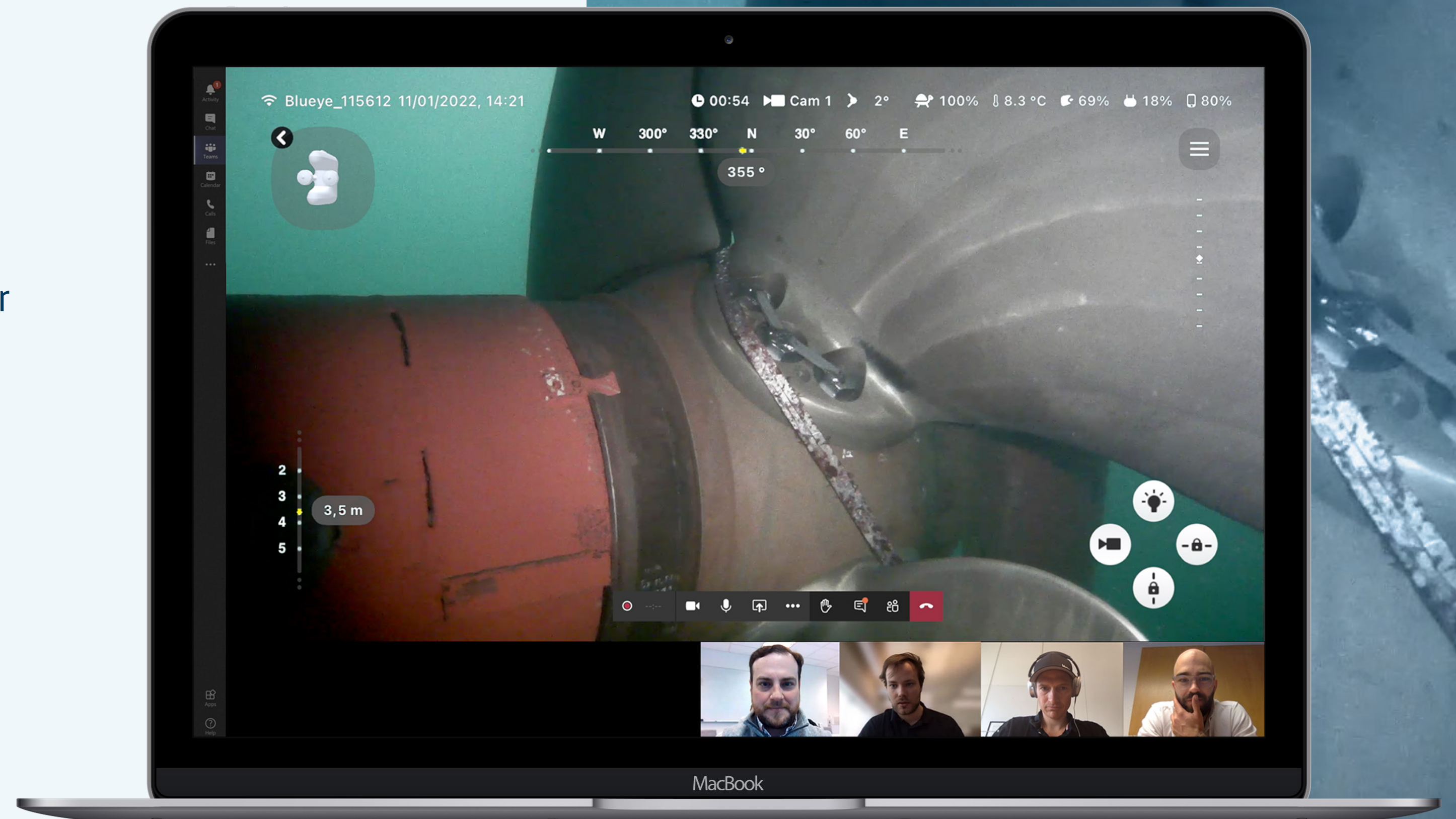
Edit and customize as needed.
Save and share directly.



LIVE STREAM IN TEAMS MEETINGS

Perform inspections and **share live** underwater footage safely and efficiently with **remote experts and stakeholders** using Microsoft Teams.

Participants can **communicate with the operator**, and among each other. **Record the meeting** for later reference.



A man with a beard, wearing a dark t-shirt and a watch, is working on a white cable management device. The device has a large spool of yellow cables and a fan. He is using a tool to work on the device. The background is a workshop or office setting with various equipment and a laptop on a desk.

BLUEYE PRODUCTS

HARDWARE AND ACCESSORIES

HARDWARE



Blueeye underwater drones

Exceptional user experience, hydrodynamic design, and fully certified. 4 powerful thrusters, HD camera, up to 5 hours* battery time and 1000 ft/305 m depth rating.



Blueeye Charger

Fully certified custom made charger, allowing for charging of battery inside the drone, or externally for spare batteries.



Blueeye Battery

Custom 99.5 Wh*/230 Wh battery pack providing up to 2h/5h operational time. Fully certified and safe smart battery.
*allowed as carry-on luggage on airplanes.



Blueeye Surface Unit

Battery powered, waterproof Wi-Fi router, with custom communications protocol to allow for network communication over a long, thin tether. Fully certified.



Blueeye Reel with tether

Tether reel with a custom-molded plastic disc to fit a Blueeye Surface Unit onto an off-the-shelf cable reel. Fits with all tether lengths available for Blueeye drones.

ACCESSORIES



Light Transportation Case

Customized case with shoulder strap. It is made in light and robust expanded polypropylene (EPP) material. Fits a Blueye underwater drone.



Blueye Protective Case

Customized hard case for different external equipment compatible with the Blueye X3. Foam inset fitted for the specific equipments to ensure protection during transport.



Zarges Aluminum Transportation Case

Customized Zarges transportation case with wheels. Foam inset fitted for a Blueye underwater drone, tether reel, and accessories.



Off-the-shelf controller

Choose between a wide range of off-the-shelf controllers to control the Blueye underwater drone.

SPARE PARTS AND TOOLS



Replacement tether

Easily swap an old tether out with a new in different lengths.



Toolkit

A small set of necessary tools are complemented in the drone package.



Replacement thruster

Extra thrusters with propeller available for replacement. Comes with tools.

ENDLESS POSSIBILITIES WITH THE BLUEYE X3

- 3 Guest Ports with 8 communication protocols enabling **integration of external equipment**.
- Custom Blueye Smart Connectors, which automatically detects which equipment is connected and starts the different **software modules** to support the connected equipment.
- **1000 ft/305 m** depth rating
- Camera tilt
- Fully CE certified



BLUEYE SUPPORT

WE GOT YOUR BACK

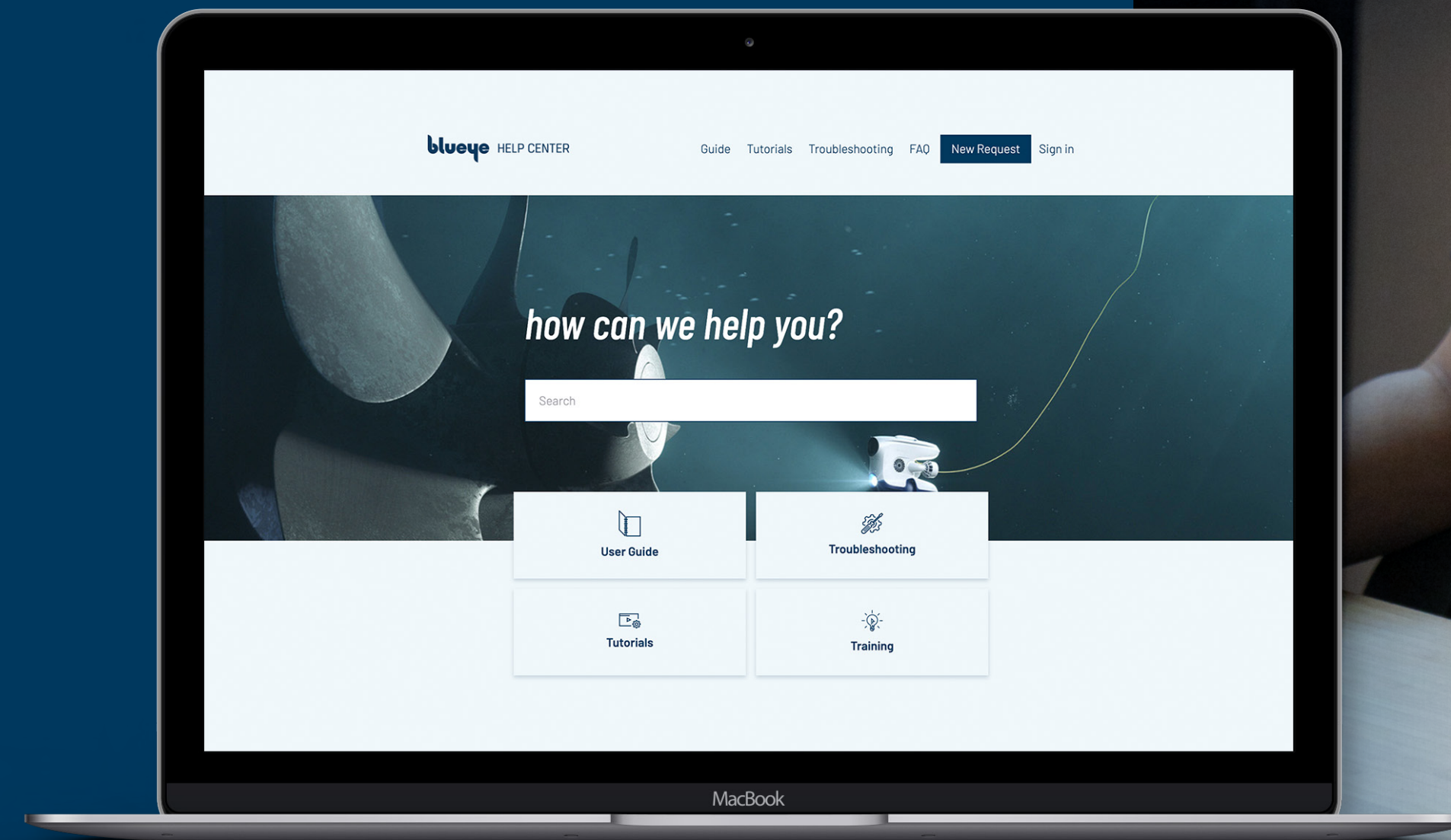
blueye

BLUEYE SUPPORT

- Exceptional **support from Engineers** who developed the products
- Receive a reply typically **within 24 hours**
- Average satisfaction score is **95%**
- Access to an extensive library of helpful videos, articles, and guides in the **Blueye Help Center**
- **Free** of charge

Visit the Blueye Help Center

(<https://support.blueye.no/hc/en-us>)



WHY CHOOSE BLUEYE

- Minimal downtime and low maintenance
- Premium support from skilled Engineers
- Software with all the necessary tools
- Operate like a pro with little practice
- Easily export and share dive reports
- iOS and Android compatible Blueye app
- Ability to share video stream to multiple spectators with the Blueye Observer app
- Livestream securely on the internet
- Premium quality in the whole value chain
- Scandinavian design. Made in Norway.
- Designed for simplicity and robustness
- Safe and quick inspection tool
- Focus on stability
- Highly invested in new development
- CE certified



YOUR EYES BELOW THE SURFACE