



مدينة إكسبو دبي
EXPO CITY DUBAI

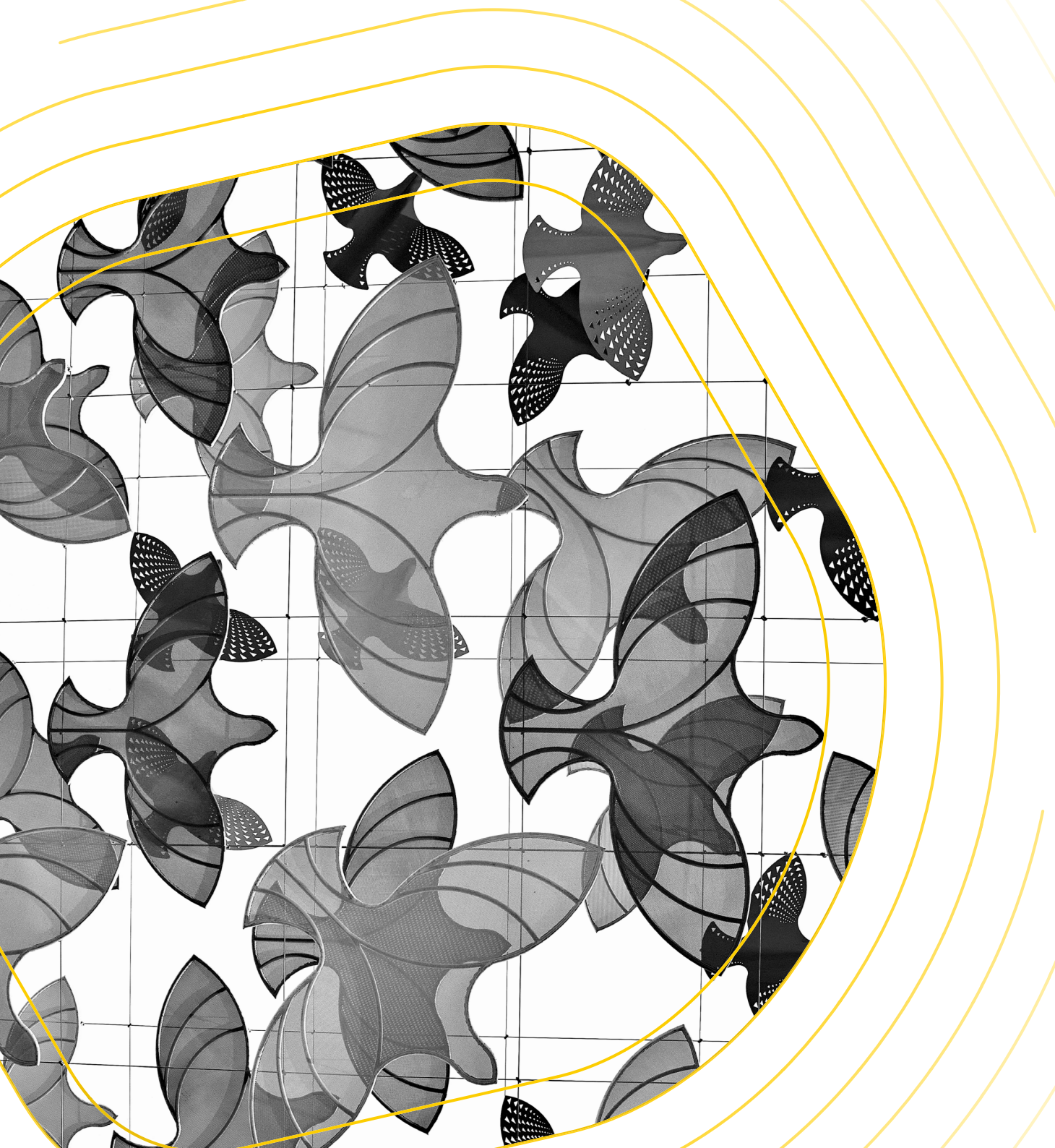
Event Spaces





TABLE OF CONTENTS

Introduction	03
Venue Sitemap	04
Outdoor Venues	06
Indoor Venues	25
Contact	57



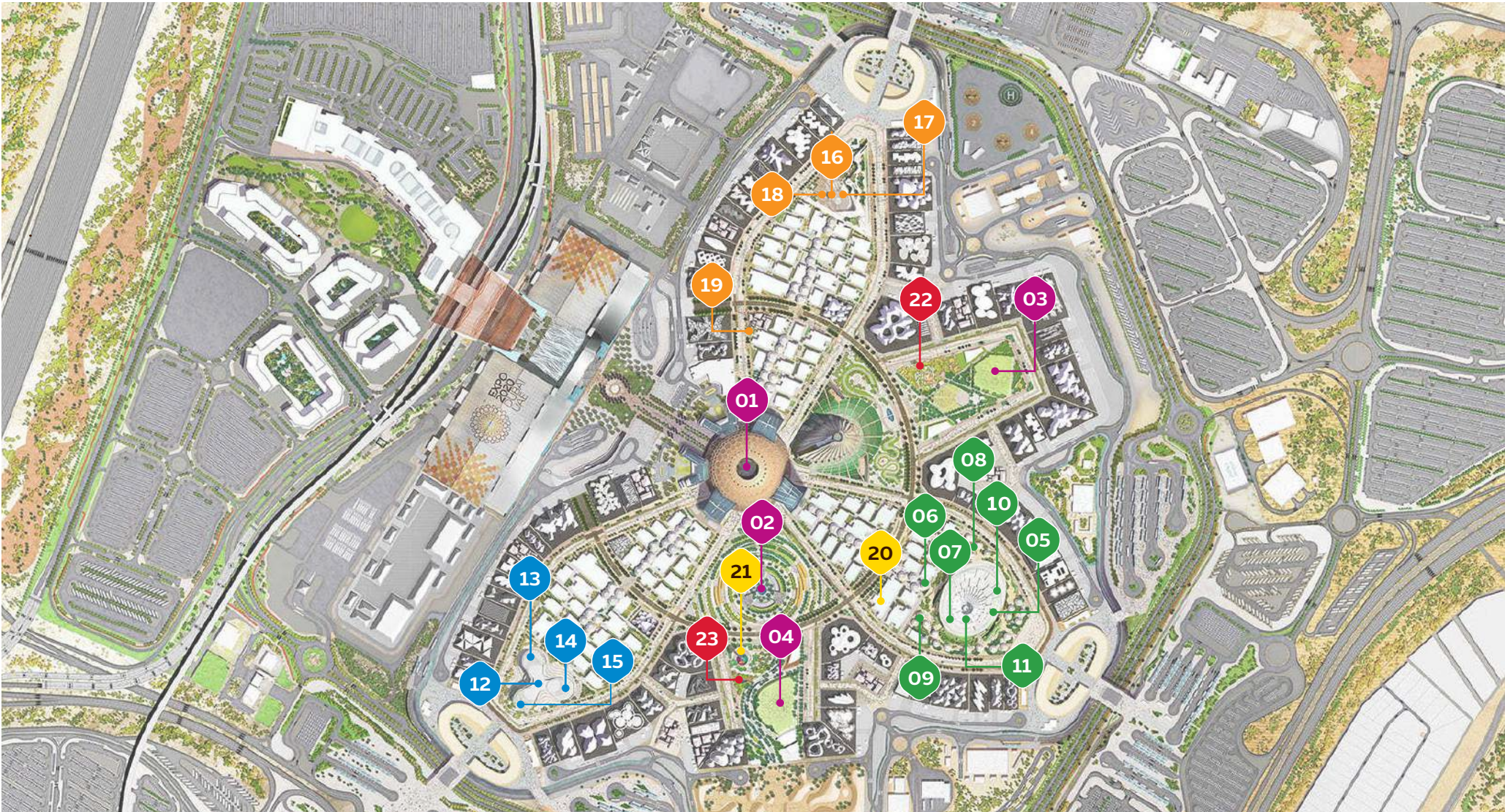
INTRODUCTION

Expo City Dubai offers a wide range of exciting venues for hosting concerts, theatrical performances, panel discussions, government ceremonies, meetings, celebrations and much more.

This brochure provides detailed technical offerings of each indoor and outdoor location.

Alternative performances areas that do not require the infrastructure of a traditional stage, such as pathways for roving entertainment, park areas for community performances and other open spaces for small-scale events, are also available.

Please contact events@expocitydubai.ae for all inquiries and bookings.



- | | | | | |
|-------------------------------------|-----------------------|----------------------------|-------------------------------|--|
| 01. Al Wasl Plaza | 07. Terra Terrace | 12. Alif Ground Floor | 18. Co-Create | |
| 02. Surreal | 08. Terra Ghaf Circle | 13. The Bowl | 19. The Nexus | |
| 03. Al Forsan Park | 09. Terra Wadi Circle | 14. The Stage | 20. Women's Pavilion | |
| 04. Jubilee Park | 10. Terra Rooftop | 15. Alif North Space | 21. Garden in the Sky | |
| 05. Terra Auditorium | 11. Terra Taqa Island | 16. Expo 2020 Dubai Museum | 22. Latifa and the Space City | |
| 06. Terra Dugong/Oryx meeting Rooms | Children Space | 17. Expo Museum Forum | 23. Rashid's Adventures | |

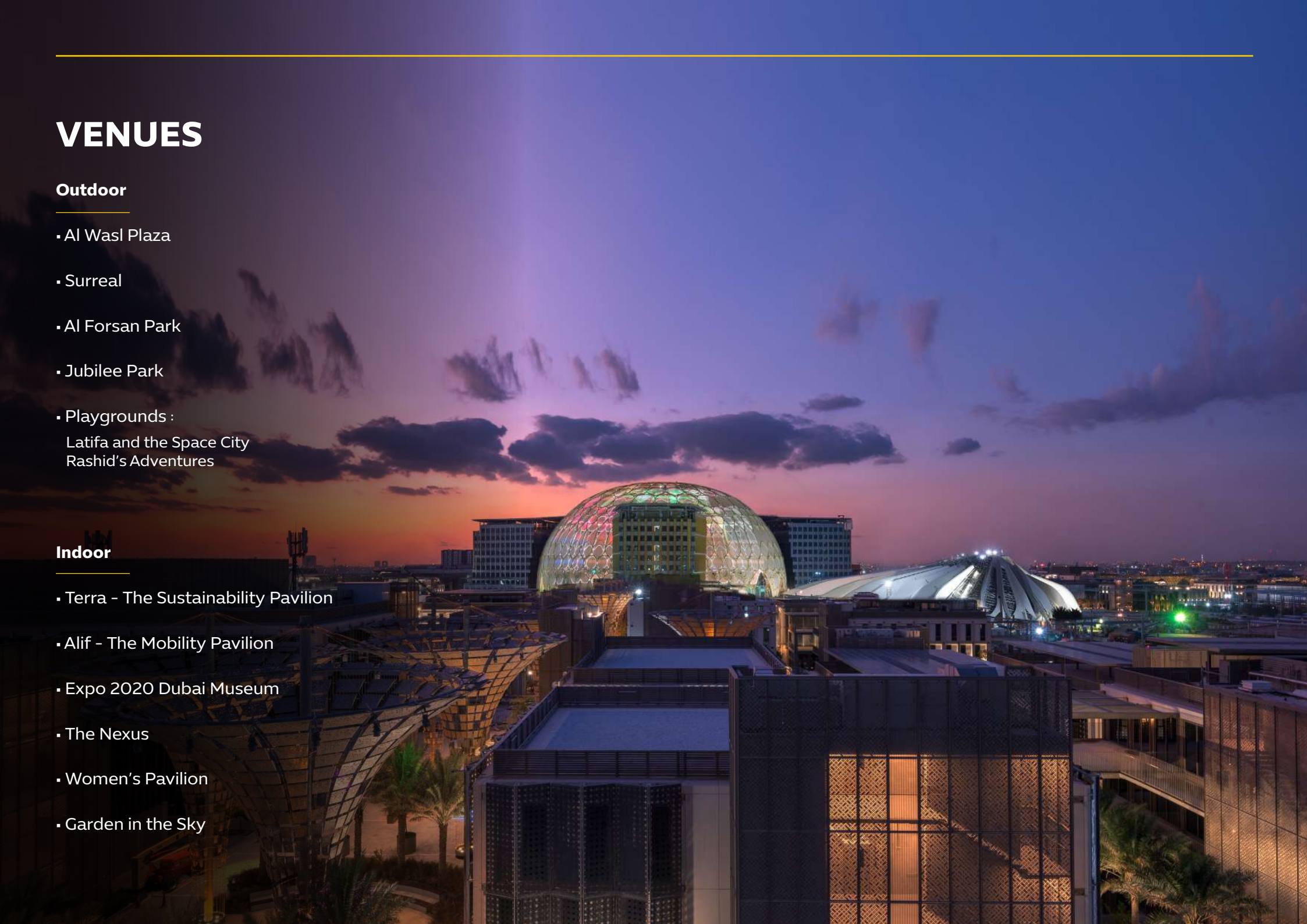
VENUES


Outdoor

- Al Wasl Plaza
- Surreal
- Al Forsan Park
- Jubilee Park
- Playgrounds :
Latifa and the Space City
Rashid's Adventures

Indoor

- Terra - The Sustainability Pavilion
- Alif - The Mobility Pavilion
- Expo 2020 Dubai Museum
- The Nexus
- Women's Pavilion
- Garden in the Sky





Outdoor Venues

AL WASL PLAZA



VENUE OVERVIEW

Al Wasl Plaza is the beating heart of Expo City Dubai and a central hub connecting the its three Thematic Districts and its concourses.

Designed as a shaded microclimate, Al Wasl's 150-metre-diameter plaza is enclosed by a dome that represents a 3D visualisation of the Expo 2020 Dubai logo and is the largest 360-degree projection surface in the world.

Al Wasl is capable of hosting 2601 people and is an ideal venue for spectacular multi-sensory shows and performances.

The dome is the largest 360-degree projection system in the world.



VENUE SPECS



Width
130m



Height
67.5m



Stage Performance Area
16m diameter



Type
Circular stage



Location
Outdoor

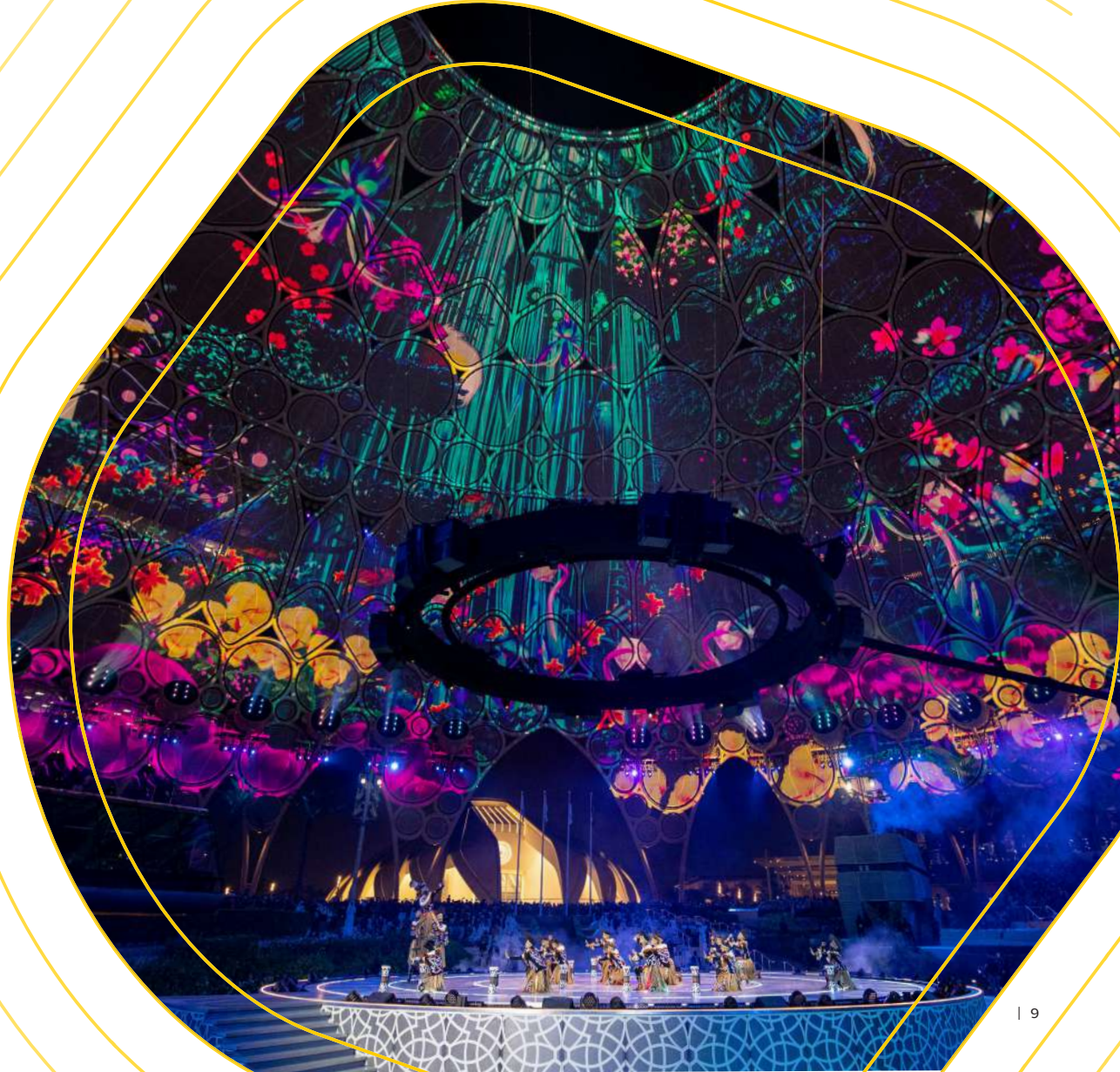


Venue Capacity
2601

FACTS & FIGURES

- 252 projectors are housed in 42 pods that project on to 585 fabric screens on the trellis
- The projection resolution is 27K
- 2.5 billion pixels are rendered every second in the augmented reality sequences that enhance the show for the broadcast audience
- The audio system features 27 immersive audio arrays with a distributed sub bass system, 789 loudspeakers, and fully integrated audio playback system
- The lighting system includes approximately 2,000 lighting fixtures including trellis pixels and 30,000 RGB garden pixels
- The powerful stage lift has a weight loading of a massive 10 tonnes
- The dome weighs a total of 2,544 tonnes

For details on technical specifications, please contact events@expocitydubai.ae



TECHNICAL SPECIFICATIONS

AUDIO		
DirectOut	MADI.SRC	4
DIGICO	Q338	2
L-Acoustics	A15 Wide	6
L-Acoustics	A15 Focus	18
L-Acoustics	A15-BUMP	18
L-Acoustics	KS21	24
L-Acoustics	X8	8
L-Acoustics	X-UL8	8
L-Acoustics	A10 Focus	4
L-Acoustics	A10 Wide	2
L-Acoustics	A-10BUMP	2
L-Acoustics	SYVA	4
L-Acoustics	SYVA WALL	4
L-Acoustics	LA4X	4
L-Acoustics	LA12X	13
-	63 A 10 m	2
-	32 A 1,5 mt	3
PowerBox Factory	ID1 - Rack 32 P in - 12 16A Mono	1
PowerBox Factory	ID3 - 2 U Rackmount 63P - 2x32P	2
-	63 A 5 m	3
RME	M32- DA Pro	1
Bauhaus	SD7 Table	1
Custom	Console/replay Sun Cover	1
DIGICO	SD Rack	2
DIGICO	8 AES IN Card	2

AUDIO		
DIGICO	8 Analog MIC Card	12
DIGICO	8 Analog OUT Card	12
DIGICO	4REA4	1
Shure	AXT630	1
Shure	PA821B	1
Shure	HA8091	3
Shure	Capsule Beta 58A	4
Shure	SBRC	3
Shure	SBC-AX / SBC910/SBC920	12
Shure	P10T	4
Shure	SE425	8
Shure	P10R+	10
Shure	EABKF1	10
Shure	SB900A / SB920/ 910	70
Shure	A85WS	8
Shure	AD4Q	2
Shure	WA306	4
Shure	ADX1	8
Shure	ADX2	8
Shure	Capsule KSM9	8
Antelope Audio	Isochrone Trinity	1
Rosendahl	MIF 4	3
Alpemann	TCD25	1
Apple	Macbook Pro 13"	1
Apple	Magic Mouse	1
Apple	iMac 27	1

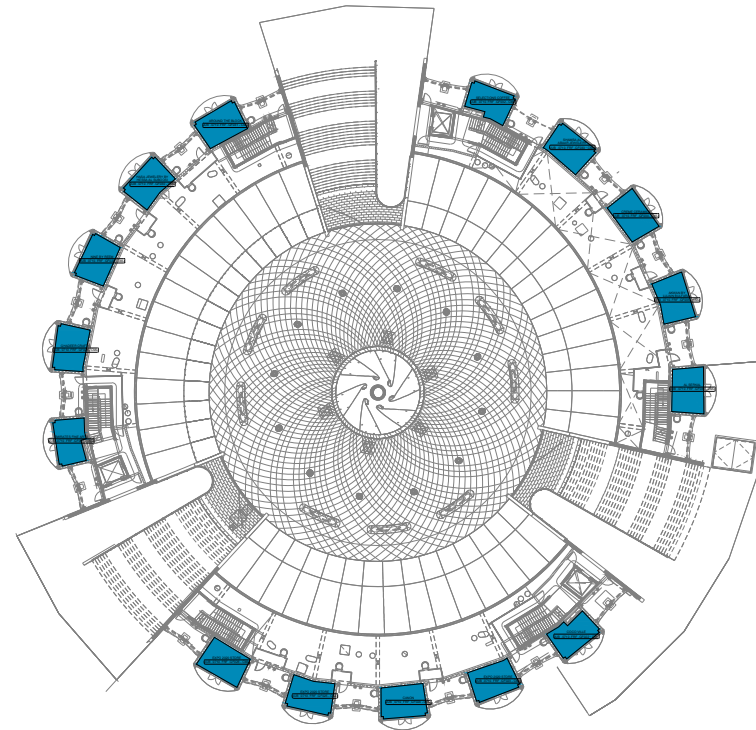
AUDIO		
Audinate	Dante Virtual Soundcard	1
Audinate	Dante Via	1
Behringer	PM1	1
Caldigit	TS3 Plus Thunderbolt3 Dock	1
Custom Electric	Redundant PSU Trinity	1
DeLL	P2219H	2
Figure 53	Q-Lab	1
Genelec	8030C/8030B	2
Generic	Adaptor USB C-USB	3
Genelec	8030C/8030B	2
RME	Madiface Xt	1
Brainstorm	SR112	2
L-Acoustics	108 P	2
L-Acoustics	X8	4
L-Acoustics	Midisolution	1
Luminex	Gigacore 26i	4
Luminex	RPSU400	4
PowerBox Factory	ID63 - 5A in - 12 x 32M Powercon	2
Optocore	Autorouter	1

SURREAL



VENUE OVERVIEW

Expo City Dubai's staggering water feature, Surreal, blends mesmerising sights and sounds in a synchronised spectacle of music, water and fire. Larger-than-life immersive walls are swept over by gushing water which then appears to flow upwards in a gravity-defying feat of engineering. Central spirals produce roaring hydrogen flames bright, unexpected colours. Every element, right down to splashes of water at certain moments, is meticulously designed and choreographed in a spectacular collaboration between LA-based WET Design (designers of the Burj Khalifa fountain), and Ramin Djawadi (award-winning composer of the Game of Thrones score).



VENUE SPECS



Width
40m



Height
18m



Type
Circle



Location
Outdoor

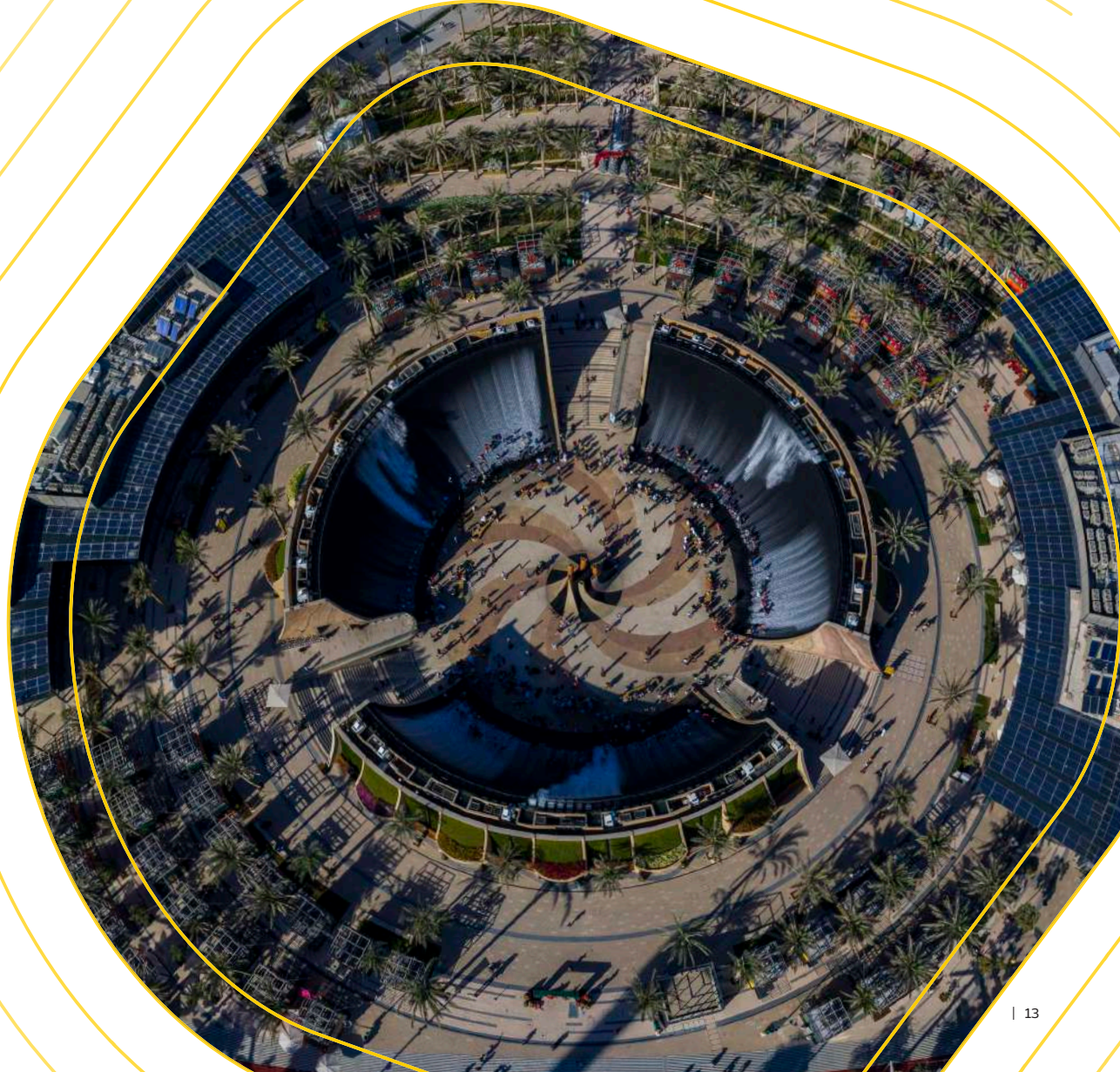


Venue Capacity
300 seated
1000 standing

TECHNICAL SPECIFICATIONS

- 18m high curved walls creating a broad, round plaza
- 40m wide area
- Walls pebbled with rubber stones
- 153 individual waves
- 21 Christie Crimson WU25 projectors
- Crimson WU25 3DLP laser projector has 25,000 lumens and Christie BoldColor technology
- Custom-designed immersive audio system
- Spiral sculpture at the centre

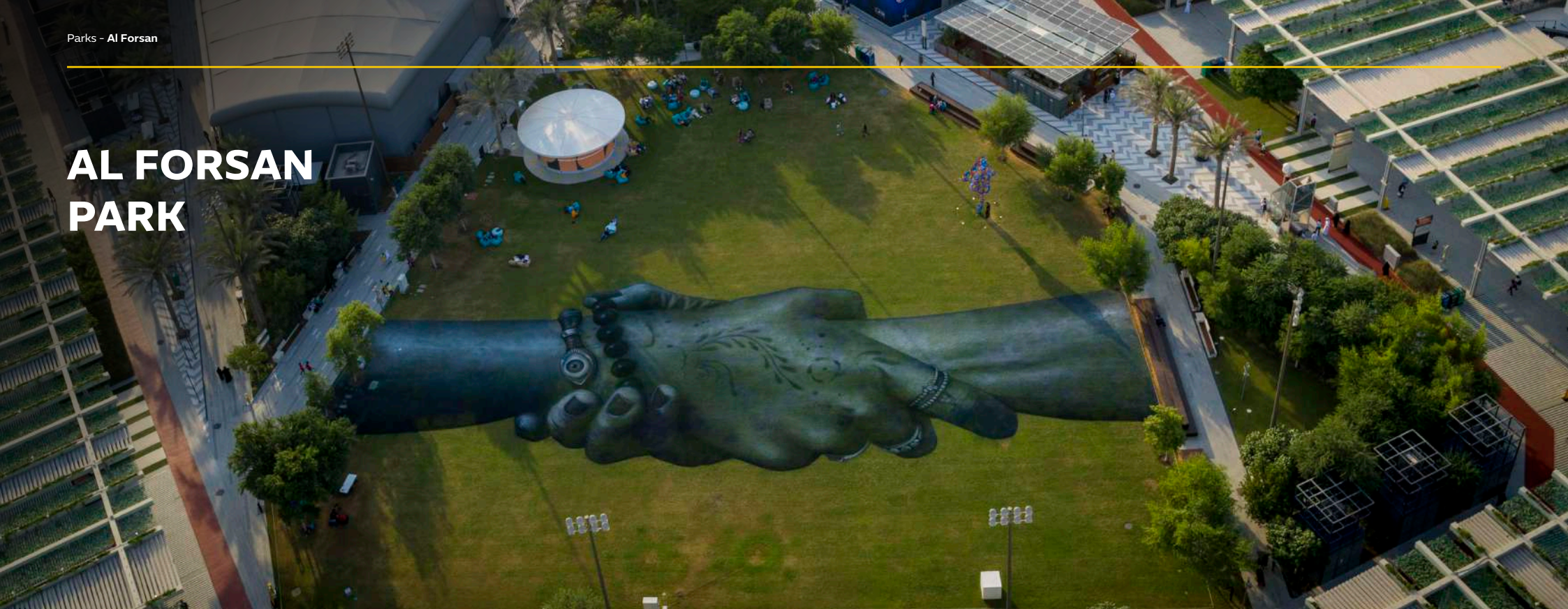
For details on technical specifications, please contact events@expocitydubai.ae



PARKS



AL FORSAN PARK



VENUE SPECS



Depth
68m



Type
Hexagon



Location
Outdoor

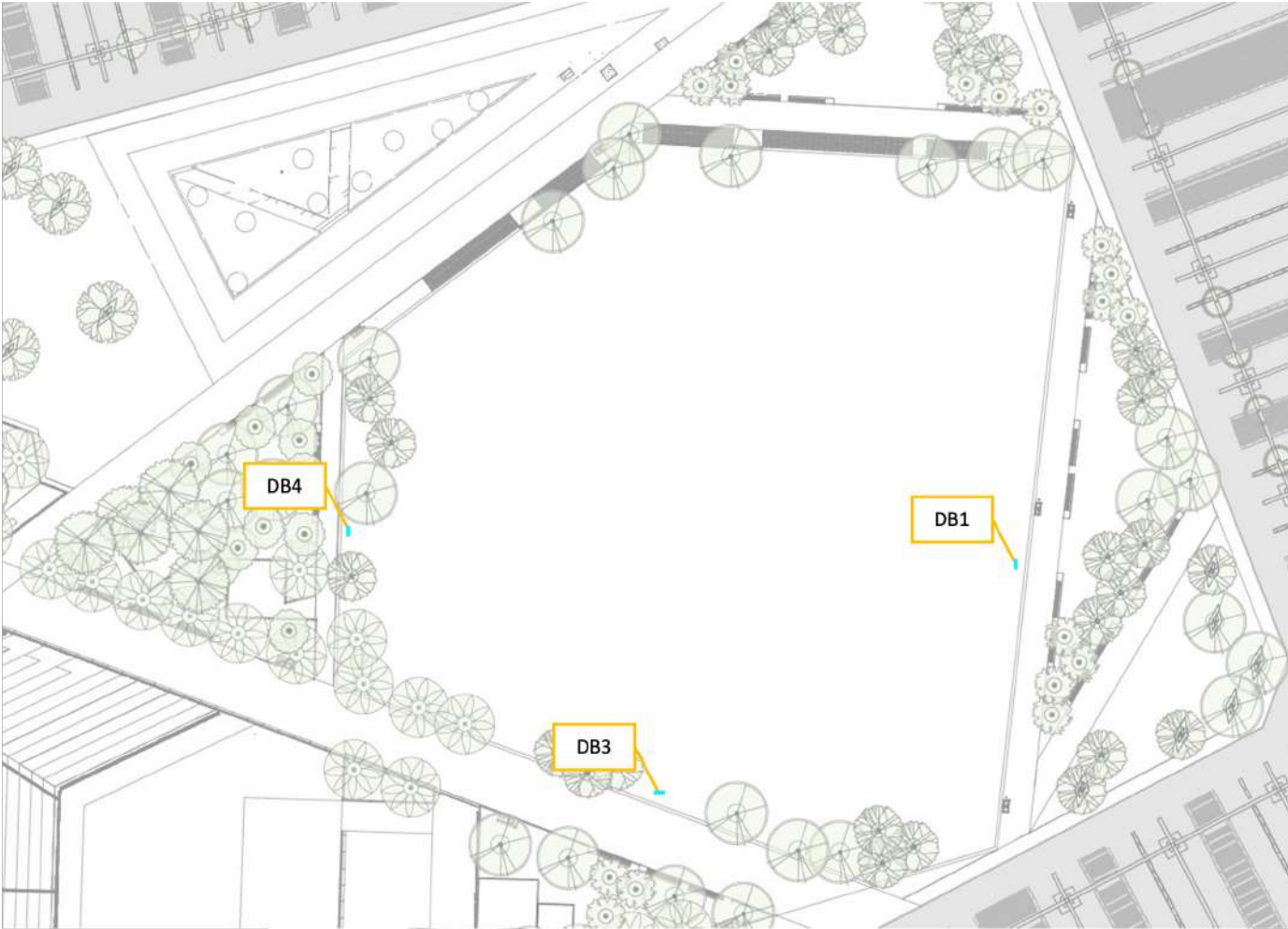


Venue Capacity
3,000

TECHNICAL SPECIFICATIONS

Show Power AI Forsan Park

AI Forsan has three DB's	
DB 1: Industrial Sockets 250A, 400V/50hz	2 x 63 A3PH5P, 2 x 32 A3PH5P, 4 x 16 A1PH3P
DB 3: Industrial Sockets 250A, 400V/50hz	4 x 32 A3PH5P, 4 x 16 A1PH3P
DB 4: Industrial Sockets 250A, 400V/50hz	4 x 32 A3PH5P, 4 x 16 A1PH3P



JUBILEE PARK



VENUE SPECS



Width
15.95m



Depth
15.4m



Performance Area
246sqm



Type
Supernova Stage



Location
Outdoor



Venue Capacity
10,000

TECHNICAL SPECIFICATIONS

AUDIO	
Main Flown PA L+R	24 d&b Audiotechnik KSL8 Loudspeaker 2 d&b Audiotechnik KSL Flying Frame
Ground Stacked Sub Array	12 d&b Audiotechnik J-SUB
Fronts and Out Fills	6 d&b Audiotechnik Y10P Loudspeaker 6 d&b Audiotechnik Y10P Loudspeaker 6 d&b Audiotechnik YP Mounting Bracket 6 d&b Audiotechnik Pipe Clamp for TV Spigot 6 d&b Audiotechnik TV Spigot with Fixing Plate 6 d&b Audiotechnik Stand Adapter
Stage Wedges	8 d&b Audiotechnik M4 Monitor
Amplification	3 d&b Audiotechnik D80 3-Way Touring Rack 14 d&b Audiotechnik D80 Amplifier
I/O, Playback	Shure ULXD 6 Way Radio Mic System
Microphones Package	1 Shure Beta 52A 4 Shure SM58 Dynamic Microphone 6 Shure SM57 Dynamic Microphone 1 AKG C414 XLS Matched Pair Kit 4 Radial J48 Active DI Box 4 Radial JDI Passive DI Box 6 K&M Tall Boom Microphone Stand 6 K&M Short Boom Microphone Stand
Power and Signal	1 Audio Power and Signal Package* -12 8way Veam stage box 1x FOH Engineer 1x System Engineer 1x Stage Tech

AUDIO	
I/O, Playback	1 DiGiCo SD12 72 Digital Mixing Console - HMA Optics 1 DiGiCo SD-Rack - HMA Optics 1 DiGiCo SD-Mini Rack - HMA Optics 7 DiGiCo SD 32-Bit 8ch DAC Output Card 7 DiGiCo SD 32-Bit 8ch Analogue Mic & Line Input Card 1 DiGiCo SD-AES 8ch I/O Card 2 HMA Optics Cable on Drum - 150m 1 Audio Control & Playback System 1 Audio Mac-Mini M1 2020 (CTME) 1 BenQ PD3200Q/32" Audio Control Screen 1 Audio Playback Logitech Wireless Mouse & Keyboard
Radio Mics	Shure Axient 6-Way Radio Mic System 3 Shure AD4D-A Dual-Channel Wireless Receiver 6 Shure ADX1-G56 Body Pack Transmitter 6 Shure ADX2-G56 Handheld Mic w/B58 1 Shure AXT630 Antenna Distribution Unit 2 Shure UA874 Active Directional Antenna 470-900MHz 6 DPA d:fine Dual Ear 4088 - Beige 6 DPA microdot to Lemo (DAD 6003) Expo City - Jubilee Stage Audio V2
Microphones Package	1 Shure Beta 52A 4 Shure SM58 Dynamic Microphone 7 Shure SM57 Dynamic Microphone 1 Shure KSM137 SL Cardioid Condenser Microphone - Matched Pair 1 AKG C414 XLS Matched Pair Kit 4 Radial J48 Active DI Box 4 Radial JDI Passive DI Box 6 K&M Tall Boom Microphone Stand 6 K&M Short Boom Microphone Stand

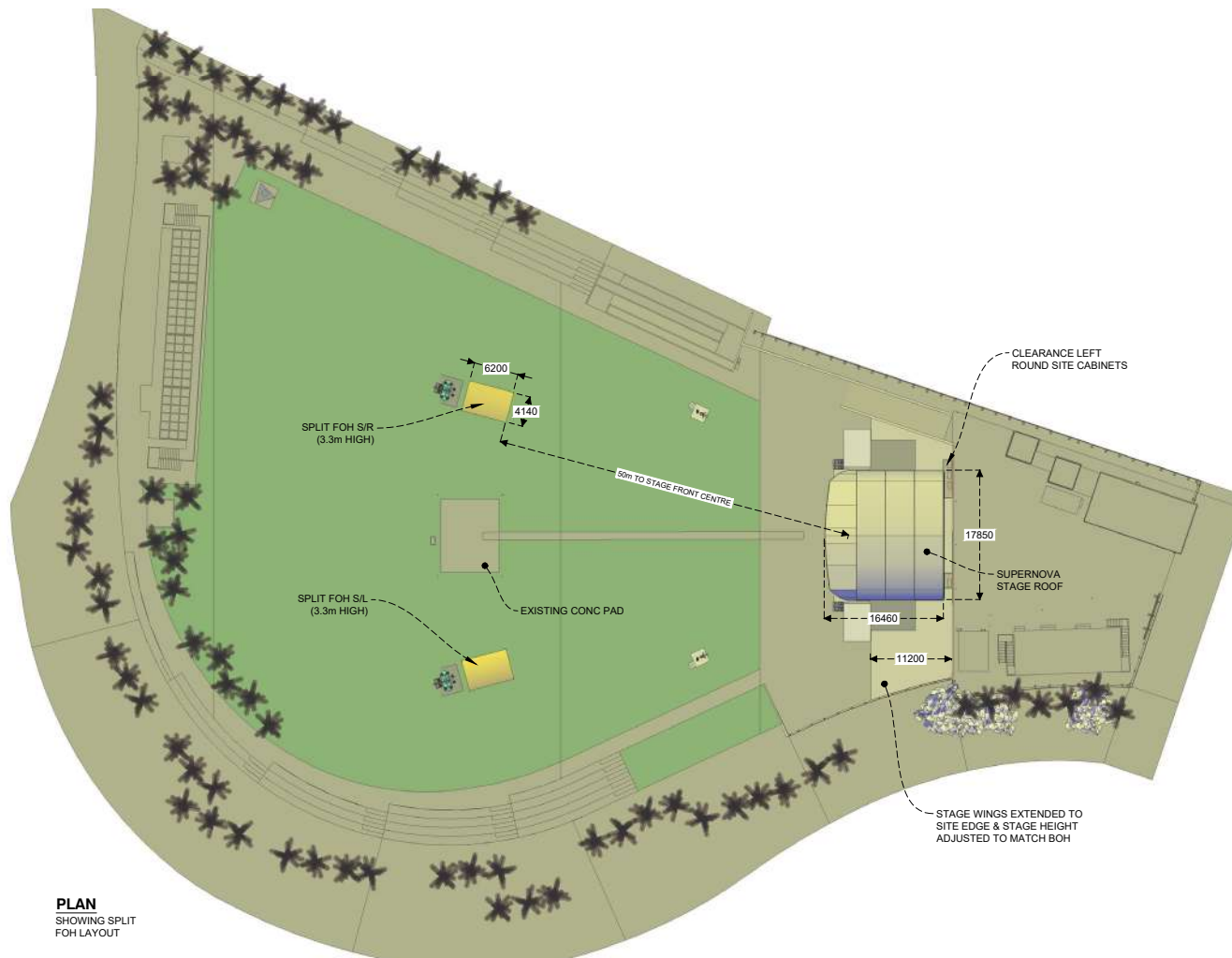
TECHNICAL SPECIFICATIONS

LIGHTING	
Moving Lights	4 Robe BMFL Blade Spot 40 Robe Robin 800 22 Martin Mac Viper Performance 32 Robe Mega Pointe 1 Follow Me Follow Me System 2 Follow-Me Fader Console 2 Follow-Me Mouse Console
Static Lights	21 Lightcraft Group X21 Wash LED Flood 20 4-Lite Molefay Blinder
Effects	2 Smoke Factory Tour Hazer II 2 Smoke Factory Tour Hazer Fluid - 5L 2 Martin AF-1 Fan
Control	1 Lighting Cable Package - Large 2 MA Lighting MA3 onPC 8 Port Node 4K 2 MA Lighting GrandMA3 - Fullsize # 2 Cisco Switch - SG300-28 Port Gbit 2 Luminex GigaCore 12 Port Switch 2 Flexoptix Fiber Optic Multimode OM3 OpticalCON Duo 250m

SCREEN	
LED Screen - 11m * 7m	2 Innlights InnScreen Z6 Controller 154 Innlights InnScreen 3.9mm LED Panel R3 500x1000 11 Innlights InnScreen R3 Flyingbars 1m
Control System	1 Luminex Gigacore 26i Switch 1 Barco Barco E2 TCIO 4K Event Processor 1 Lightware Switch - Lightware MX2-8x8-HDMI2.0-Audio-L 1 Barco Barco EC-30 Event Controller 1 LG 43" 43UD79-B 4K Multiviewer Monitor 2 Lenovo Thinkbook 15 IML Laptop 2 APC UPS - 2200 SMX2200HVNCe
Media Server	4 AJA 12G-AM 8-Channel AES Audio Embedder/Disembedder 12G-SDI 8-Channel AES Audio AJA 12G-AM 8-Channel AES Audio Embedder/Disembedder with Fiber Options 2 Resolume Arena 2 LG 27" 27MP77HM-P Monitor 1 Rosendahl MIF4 Timecode Interface 2 Media Server - NVIDIA RTX A5000 with Quadro Sync II
Up Stage Centre Screen	11m x 7m Screen Size: 11,000mm x 7,000mm Crew will be provided on a rate card basis Provision has been made to include 2 Portrait IMAG on a rate card
IMAG Screens - Two Screens	Each Screen: Screen Size: 5,000mm x 3,000mm

TECHNICAL SPECIFICATIONS

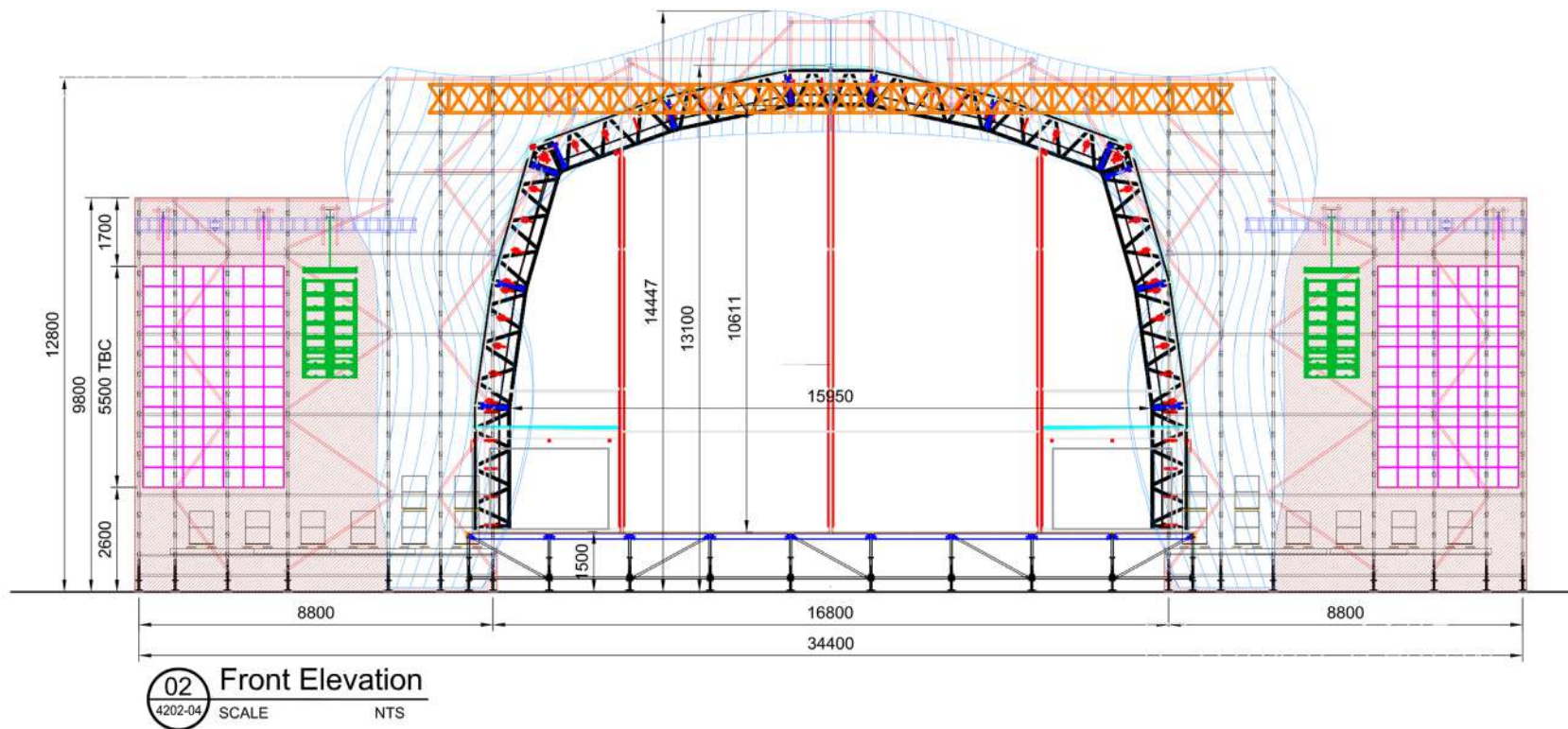
Venue setup



PLAN
SHOWING SPLIT
FOH LAYOUT

TECHNICAL SPECIFICATIONS

Stage setup - front elevation



PLAYGROUNDS



LATIFA AND THE SPACE CITY



VENUE SPECS



Venue Type
Playground



Location
Outdoor



Venue Capacity
269



Event Types
Entire playground
available for rent

Food and drinks are
not allowed in
the playground area



Venue Specs
1,075sqm

RASHID'S ADVENTURES



VENUE SPECS



Venue Type
Playground



Location
Outdoor



Venue Capacity
45




Event Types
Entire playground
available for rent

Food and drinks are
not allowed in
the playground area



Venue Specs
474sqm



Indoor Venues

TERRA – THE SUSTAINABILITY PAVILLION

TERRA AUDITORIUM



VENUE SPECS



Venue Type
Auditorium



Location
Indoor



Venue Capacity
130



Event Types
Conferences / conventions;
panels; workshops;
training; private events;
galleries; product launches;
graduations



Venue Specs
Two exits & entrances
Elevator
One projector with a screen
Three restrooms
Two speakers
75 foldable chairs
One green room and two dressing
rooms – equipped with furniture, live
screens and washrooms

TERRA DUGONG / ORYX MEETING ROOMS



VENUE SPECS



Venue Type
Meeting Room



Location
Indoor



Venue Capacity
40



Event Types
Meetings; training;
workshops



Venue Specs
Divisible into two meeting
rooms - each including 12
seats plus bench seating for 8
additional people (total 20
per room)

Two LCD screens
Conference speaker system
Flip charts

TERRA TERRACE



VENUE SPECS



Venue Type
Multi-purpose venue



Location
Outdoor



Venue Capacity
275



Event Types
Private and networking



Venue Specs
Two entrances & exits
Outdoor area covered by
Terra canopy
Mixture of paved and
landscape area

TERRA GHAF CIRCLE



VENUE SPECS



Venue Type

Multi-purpose venue



Location

Outdoor



Venue Capacity

69



Event Types

Private and networking



Venue Specs

Amphitheatre seating

TERRA WADI CIRCLE



VENUE SPECS



Venue Type

Multi-purpose venue



Location

Outdoor



Venue Capacity

85



Event Types

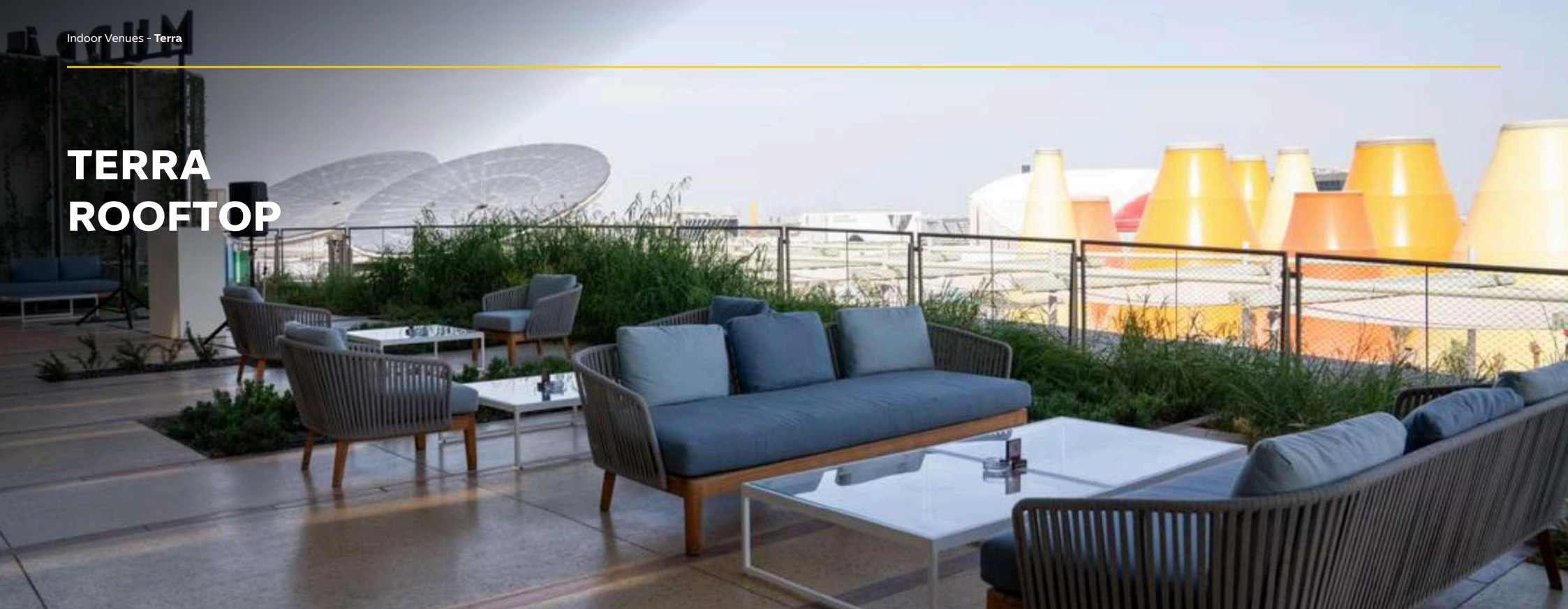
Private and networking;
musical, galleries and
product launches



Venue Specs

Amphitheatre seating

TERRA ROOFTOP



VENUE SPECS



Venue Type
Terrace



Location
Outdoor



Venue Capacity
150



Event Types
Dinners; private and
networking events



Venue Specs
Views of Expo City
Bar
Service kitchen
Sound system

TAQA ISLAND



VENUE SPECS



Venue Type
Within pavilion



Location
Indoor



Venue Capacity
30



Event Types
Children's events and parties

Children 2 to 12 years old

Height between 95cm - 145cm

ALIF - THE MOBILITY PAVILLION



ALIF GROUND FLOOR



VENUE SPECS



Venue Type

Multi-purpose venue



Location

Indoor



Venue Capacity

100



Event Types

Conferences / conventions;
panels; workshops; training;
private events; gala dinner;
galleries; product launches;
team building



Venue Specs

Two exits & entrances
Elevator
One projector with a screen
Three restrooms
Two speakers
75 foldable chairs
75 inch TV
Two Microphones

ALIF THE BOWL



VENUE SPECS



Venue Type

Multi-purpose venue



Location

Outdoor



Venue Capacity

500



Event Types

Entertainment performances;
talks / panels; product
launches; graduations;
workshops; sport events;
technology competitions &
demonstrations



Venue Specs

Outdoor accessibility

380 industrial is the
category of power outlet
available

Restrooms located
indoor, inside retail area

ALIF THE STAGE



VENUE SPECS



Venue Type

Multi-purpose venue



Location

Outdoor



Venue Capacity

40



Event Types

Professional entertainment performances; talks; product launches; car shows



Venue Specs

Outdoor accessibility
Three power outlets - 380 industrial
Restrooms located indoor, inside retail area

ALIF NORTH SPACE



VENUE SPECS



Venue Type

Multi-purpose venue



Location

Outdoor



Venue Capacity

100



Event Types

Markets; sport events;
product launches; car
shows; entertainment;
performances



Venue Specs

Outdoor accessibility

Power outlets

Restrooms located indoor,
inside retail area

Ultra Violet chairs

EXPO 2020 DUBAI MUSEUM

PLAZA



VENUE SPECS



Venue Type

Multi-purpose venue



Location

Outdoor



Venue Capacity

350



Event Types

Talks / panels;
entertainment / dance
performances; lectures;
children events;
conferences; gala dinners;
product launches



Venue Specs

Outdoor accessibility

Power outlets

Canopy

80 wooden chairs

7 wooden benches

FORUM



VENUE SPECS



Venue Type

Multi-purpose venue



Location

Outdoor



Venue Capacity

150



Event Types

Talks / panels;
entertainment / dance
performances;
lectures



Venue Specs

Outdoor accessibility
Four power outlets
Sound / light system
Wired internet connection
Induction loop

CO-CREATE



VENUE SPECS



Venue Type
Multi-purpose venue



Location
Indoor



Venue Capacity
80



Event Types
Talks / panels / meetings;
entertainment / dance
performances; lectures;
movie screenings;
conferences; product
launches



Venue Specs
Two exits & entrances
Four screens
One projector with a screen
One restroom
Built-in AV system
80 wooden chairs available
Stage
Wired internet connection

EXPO 2020 DUBAI MUSEUM LIBRARY



VENUE SPECS



Venue Type

Multi-purpose venue



Location

Indoor



Venue Capacity

50



Event Types

Talks, panels,
workshops, trainings,
art & exhibitions, private
event, product launch



Venue Specs

Built-in 120 inch TV screen
Built-in sound system

WOMEN'S PAVILION

المساحة
النساء
WOMEN'S
PAVILION

WOMEN'S PAVILION MAJLIS



VENUE SPECS



Venue Type

Multi-purpose venue



Location

Indoor



Venue Capacity

150



Event Types

Conferences / conventions;
panels / talks / seminars;
workshops / training;
private events; gala dinners;
exhibitions; product launches



Venue Specs

Customised venue, see next
page for range of specs

TECHNICAL SPECIFICATIONS

VENUE SPECS

Two exits and entrances
Elevator
Projector screen
Restrooms
Speakers
Internet connection
Microphones
VIP lounge
One podium
84 beige round chairs

AVAILABLE ASSETS FOR HIRE

Pastel green chairs
Beige square lounge chairs
Beige sofas
Tall white chairs
Beige single sofas
Beige three-seater sofas
Golden corner tables
Oval tables
Side corner round table
Marble table



GARDEN IN THE SKY



OBSERVATION TOWER



VENUE SPECS



Venue Type

Amusement ride



Location

Mixed indoor/outdoor



Venue Capacity

100



Event Types

Full ride available for rent

Drinks reception in basement
with full use of the ride included

Food and drinks are not allowed
on the ride



Venue Specs

Limited water and
power outlets.

Venue available for selected
events upon request.

THE NEXUS



THE NEXUS HUB



VENUE SPECS



Venue Type
Multi-purpose venue



Location
Indoor



Venue Capacity
120



Event Types
Conferences / conventions;
panels / talks / seminars;
workshops / training;
private events; gala dinners;
exhibitions; product launches



Venue Specs
163sqm

TECHNICAL SPECIFICATIONS

AVEQUIPMENT:	
Video:	1 x Wall mounted curved LED Screen (P2.5 Indoor, 6.24m x 1.92m, 2,496px x 768px, 1600 NIT Brightness) 2 x 43" Stage comfort monitor (With black hide) 2 x 55" Ceiling mounted relay monitors
Audio:	4 x Ceiling mounted point source speakers 1 x Ceiling mounted Subwoofer 2 x Ceiling mounted stage side fill foldback monitors 1 x Midas M32R audio console
Cameras:	2 x Ceiling mounted PTZ cameras with CCU control
Backstage AV equipment:	5 x Lenovo laptop Blackmagic Atem HD seamless switcher 1 x NUC PC (Resolume installed for content playback) AV rack with all the processors and networking controls 1 x 43" Preview Monitor (Linked to inhouse camera)
FOH AV equipment:	1 x Midas M32R mixer integrated with audinate dante card 5 x Audix microphones dual RF receivers (10 channels) 10 x Wireless handheld Mics 10 x Wireless Beltpacks 10 x Headset Mics 1 x Lenovo laptop for the main background 6 x Clearcom wired comms 4 x Clearcom wireless comms x Simple DMX lighting controller (6x Presets)



THE NEXUS CONFERENCE ROOM



VENUE SPECS



Venue Type
Conference room



Location
Indoor



Venue Capacity
20



Event Types
Conferences / conventions;
panels / talks / seminars;
workshops / training;
private events; gala dinners;
exhibitions; product launches



Venue Specs
51.5sqm

TECHNICAL SPECIFICATIONS

VENUE SPECS

Conference table
(1x Size L600XW160xH75)
Executive chairs (x10)
Breakout chairs (x6)

AVAILABLE ASSETS FOR HIRE

TV screen 89 inches
Barco Clickshare technology
Logitech/Rally conference system
(All virtual platforms)
WebEx Microsoft Teams: Zoom
Wifi



THE NEXUS GARDEN TERRACE



VENUE SPECS



Venue Type
Multi-purpose venue



Location
Outdoor



Venue Capacity
150

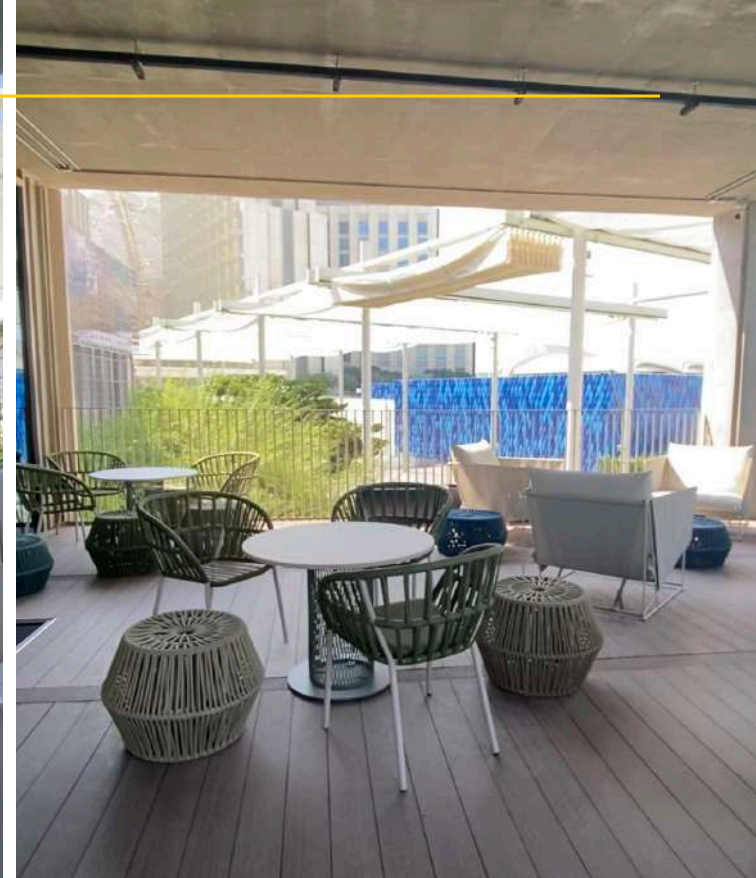
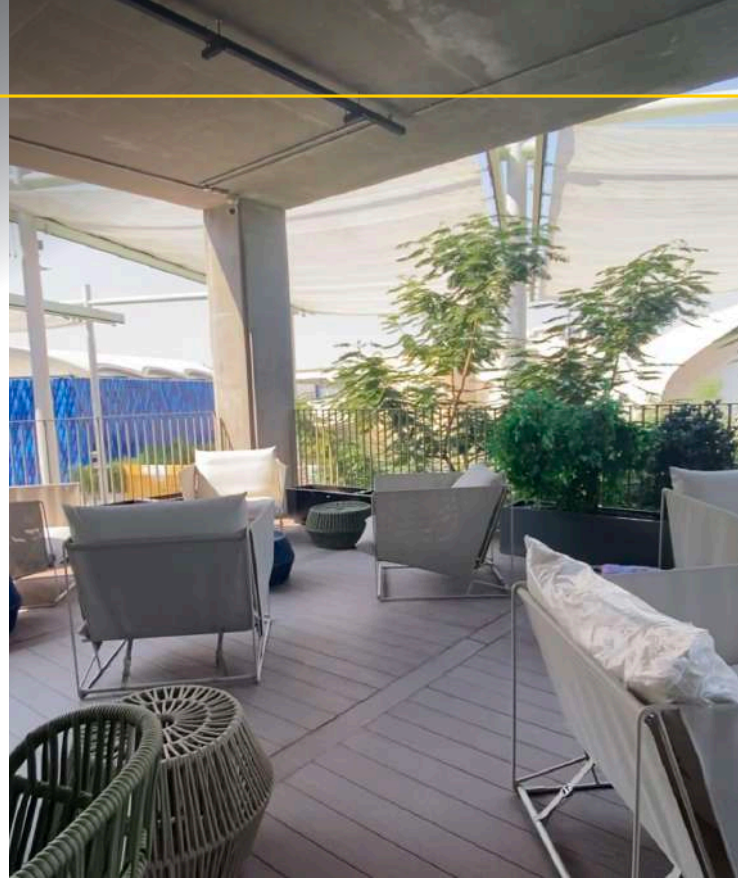


Event Types
Conferences / conventions;
panels / talks / seminars;
workshops / training;
private events; gala dinners;
exhibitions; product launches



Venue Specs
68sqm

THE NEXUS SUNSET TERRACE



VENUE SPECS



Venue Type
Multi-purpose venue



Location
Outdoor



Venue Capacity
150



Event Types
Conferences / conventions;
panels / talks / seminars;
workshops / training;
private events; gala dinners;
exhibitions; product launches



Venue Specs
68sqm

CONFERENCE ROOM - 51.5 sqm

PLENARY ROOM & STAGE AREA = 159 sqm
MEDIA ROOM = 6.4 sqm
MEDIA BOOTH = 6.3 sqm

EXTERNAL TERRACE AREA = 68 sqm

LOBBY & HALLWAY = 82 sqm



مدينة إكسبو دبي
EXPO CITY DUBAI

CONTACT US

For bookings and more information:
events@expocitydubai.ae

expocitydubai.com

