



# etc.venues County Hall

Belvedere Road, London SE1 7PB

- Meetings range from 12 to 400 people
- Located in the iconic County Hall building on London's Southbank, the venue overlooks the River Thames, Houses of Parliament, Big Ben, and the London Eye
- Ideal for investor conferences, roadshows, stakeholder events, government summits, and team-building events

↑↓ NEARBY PUBLIC TRANSPORTATION

🗝️ TURNKEY SPACES

🤝 SHARED HOSPITALITY RESOURCES

📶 WIFI INCLUDED

🍴 COMMUNAL CATERING-OF-THE-DAY

👑 SELECT SIGNAGE OPPORTUNITIES

SQUARE METERS

6,317

MEETING ROOMS

30

LARGEST CAPACITY ROOM

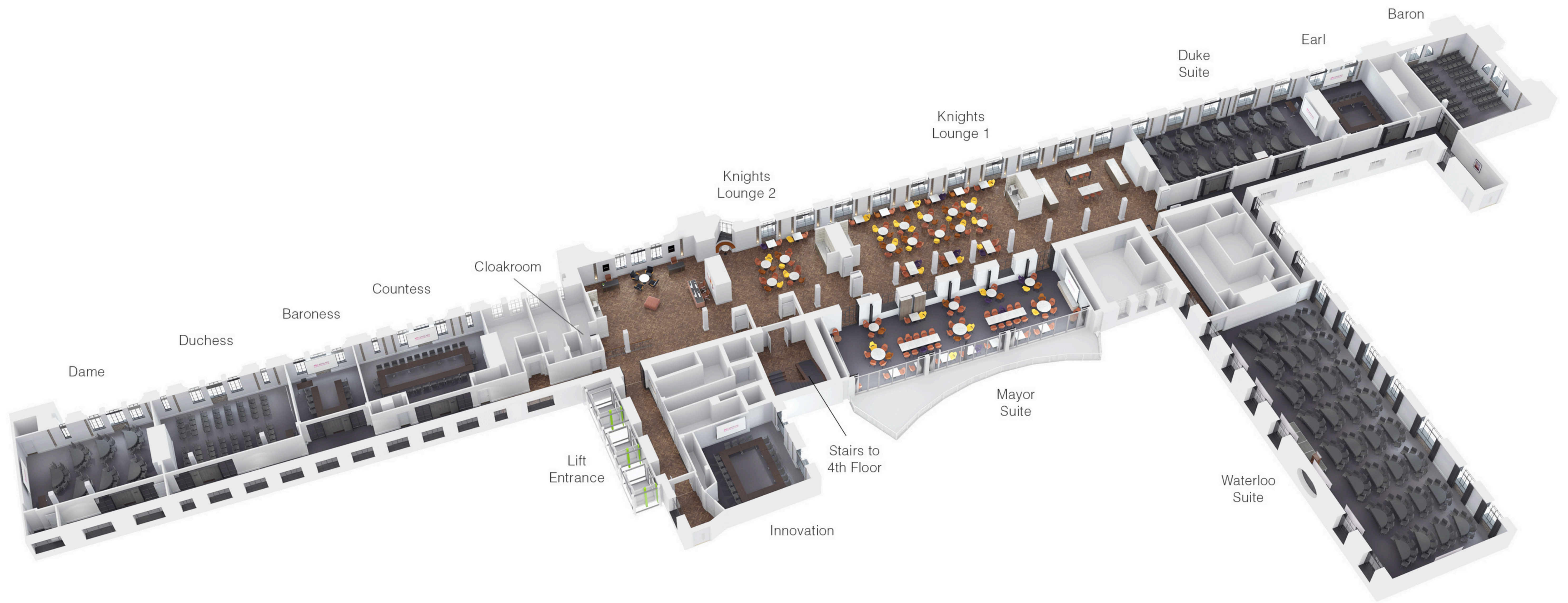
400



# etc.venues County Hall

Belvedere Road, London SE1 7PB

## THIRD FLOOR

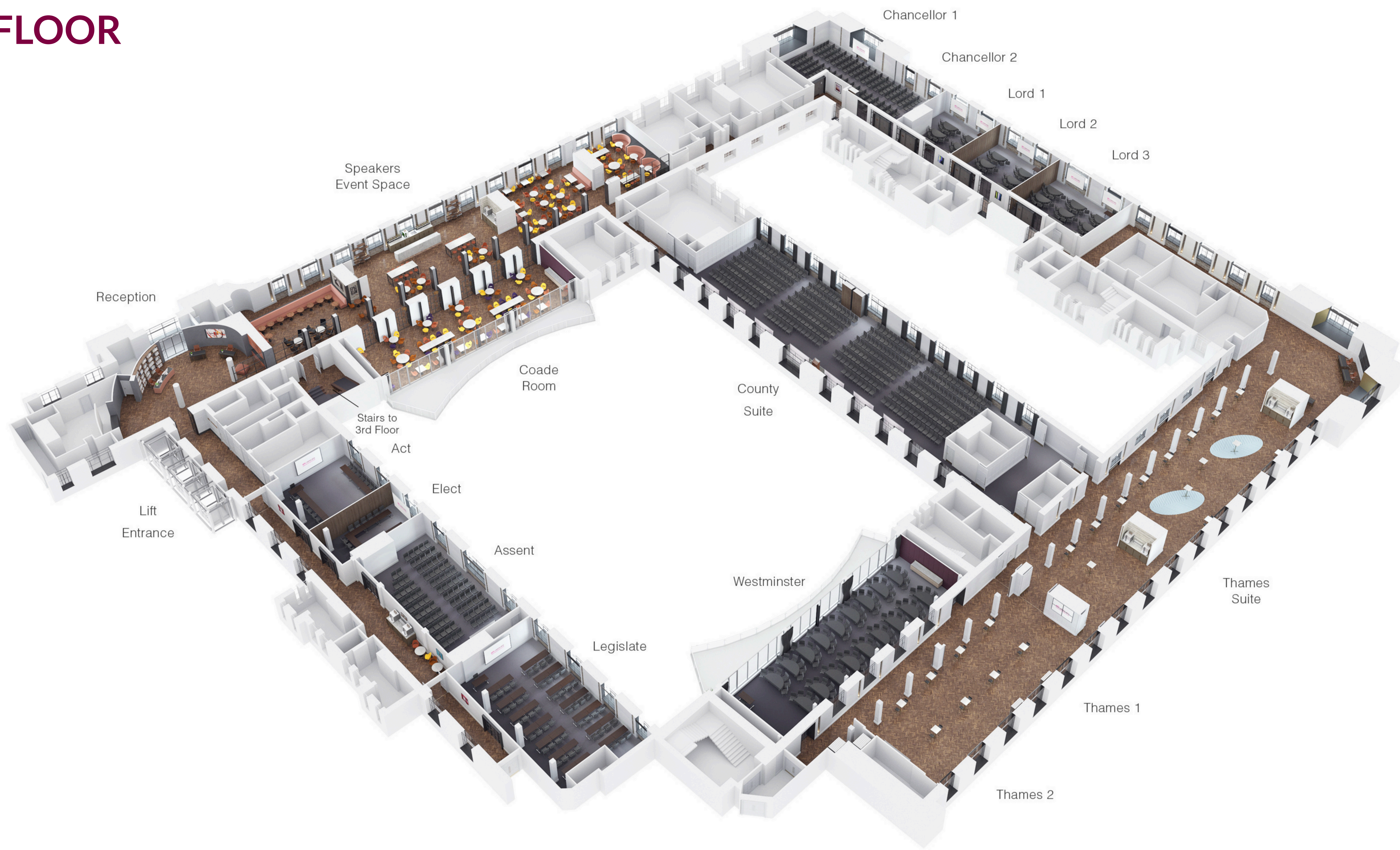


ROOM NAME	AREA [SQ M]	THEATER	BANQUET	CABARET	CLASSROOM	U-SHAPE	BOARDROOM	EXHIBITION (STANDS)
WATERLOO SUITE	288	328	240	192	136	-	-	27
DUKE SUITE	139	160	100	96	72	48	52	8
DUKE 1	57	50	40	24	24	16	20	4
DUKE 2	82	70	60	48	36	24	32	5
MAYOR SUITE	144	152	120	108	84	56	60	12
MAYOR 1	91	96	80	72	56	36	40	-
MAYOR 2	53	48	40	30	24	16	20	-
BARON	79	80	60	48	40	28	32	-
DUCHESS	76	64	50	36	30	24	28	-
DAME	76	64	50	32	30	26	28	-
INNOVATION	56	60	40	24	24	20	24	-
COUNTESS	70	56	50	36	24	20	28	-
EARL	51	50	40	24	18	18	20	-
BARONESS	34	32	20	18	12	12	12	-
KNIGHT'S LOUNGE	220	-	-	-	-	-	-	12

# etc.venues County Hall

Belvedere Road, London SE1 7PB

## FOURTH FLOOR



ROOM NAME	AREA [SQ M]	THEATER	BANQUET	CABARET	CLASSROOM	U-SHAPE	BOARDROOM	EXHIBITION (STANDS)
COUNTY SUITE	384	400	260	252	180	-	-	36
COUNTY 1	227	224	150	140	96	-	-	20
COUNTY 2	157	160	120	96	72	-	-	13
THAMES SUITE	678	-	280	-	-	-	-	54
THAMES LOUNGE	444	-	160	-	-	-	-	33
THAMES 1 + 2	167	200	120	108	88	56	64	-
THAMES 1	83	84	60	48	40	28	32	-
THAMES 2	84	84	60	48	40	28	32	-
LORD SUITE	193	200	120	123	84	44	72	-
LORD 1 + 2	119	120	80	72	60	30	44	-
LORD 2 + 3	137	150	100	90	72	36	56	-
LORD 1	56	40	30	36	24	18	20	-
LORD 2	63	60	40	36	24	20	24	-
LORD 3	74	70	60	54	36	22	28	-
CHANCELLOR SUITE	151	150	100	96	72	50	56	-
CHANCELLOR 1	93	100	60	60	42	24	32	-
CHANCELLOR 2	58	50	40	36	24	20	24	-
WESTMINSTER	143	150	120	108	88	56	60	-
LEGISLATE	115	110	80	48	56	38	44	-
ASSENT	92	100	70	48	44	36	40	-
ACT + ELECT	96	100	60	60	40	34	40	-
ACT	61	60	40	30	24	22	28	-
ELECT	35	30	16	12	12	16	16	-
THE COADE ROOM	143	-	120	-	-	-	-	8

**etc.venues**