

334 HOT SUMMER BUYS
FOR YOUR LUST LIST

20% OFF
AT LITTLEWOODS
IRELAND
INSIDE

HOUSE AND home™

Ireland's Bestselling Interiors Magazine*

JULY/AUGUST 2019
€4.50 (STGE3.50)

ULTIMATE SOFA GUIDE

58 super styles
+ tips and
advice

Pink FTW

A WOW
A BATHROOM
MAKEOVER

9 STEPS TO A DREAM LAUNDRY

TECH meets TRENDS

Your future home
is on p102

Hi, Summer!

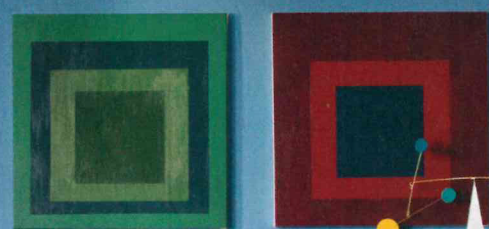
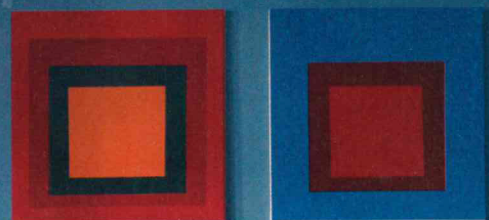
BOLD SUMMER
COLOURS + UP YOUR
AL FRESCO GAME



HOUSEANDHOME.IE

House profile

HOUSE TYPE Period 3-storey terraced redbrick with 4 bedrooms (one used as a study)
LOCATION Dublin 4
SIZE 202 sq m
OWNER A professional woman who loves art, architecture, travel – and colour



Over the mantelpiece hang four canvases, created by KLD to complement the scheme. The matching mid-century bentwood armchairs are from Artemest (Artemest.com). The mid-century sputnik chandelier is from the Cross Gallery. Wall lights are by Dutchbone (Woodesign.ie)

Colour (R)EVOLUTION

The latest project from Kingston Lafferty Design is a jewel-toned masterpiece

WORDS KIRSTIE McDERMOTT
PHOTOGRAPHY BARBARA CORSICO

Creating a new colour palette is no mean feat in an interiors landscape that often seems to skew between dark décor and Scandi minimalism, with not a lot in between. But the ever-inventive Róisín Lafferty, founder and Creative Director of Dublin's Kingston Lafferty Design (Kingstonlaffertydesign.com), can always be relied on to come up with a fresh approach.

In this boxfresh residential project, she's cultivated a colourful concept that has its roots in the homeowner's art and objet collection, as well as her interest in travel. "We took influences from Italy and Marrakesh," Róisín reveals.

"It looks like a lot," she says, "but it feels calm, it's not shouty." For those who are shy of using stronger shades, Róisín says paint is your first port of call. "The thing is, when it's easy to paint a room yourself. Get samples and work out what atmosphere you want to create – that's really important," she advises. "People feel more comfortable with fashion than interiors, so paint is the starting point."

In this home, colour is used as both the clothes and the accessories – "it's a jewellery box," Róisín laughs. "The colours are all quite timeless, they're not garish or sugary." For interior inspiration and six tonal tricks to try, read on. **H**

TIP: Pick out period features using tonal variations from the same colour family



The owner's art collection – including this piece by Maser, left, was a starting point for the whole scheme

TRICK #1:

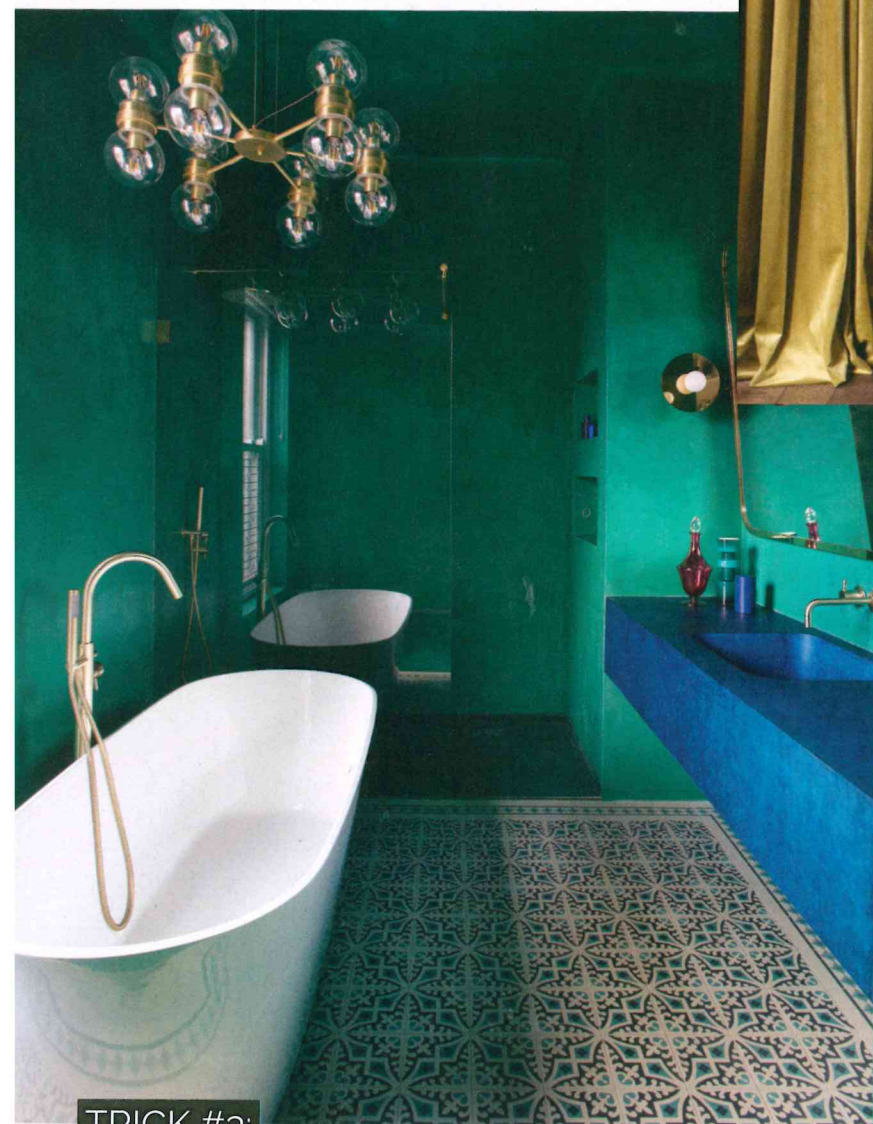
Create Contrast

The easiest way to add impact is with colours that are opposing on the colour wheel – so think purple and yellow, green and pink, and red and blue – a particularly effective combination, used above to great effect. Walls, woodwork and joinery are painted in Wynwood from Fleetwood's Vogue Collection (Fleetwood.ie). Floor tiles from Original Style from Richardson Ceramics (Richardsonceramics.ie) are inset into the parquet floor from Floor Design (Floordesign.ie). An extended hearth runs lengthwise from the fireplace and was created using green marble from Rocca Stone (Roccastone.ie). Vintage-inspired ripple glass hides bespoke cocktail cabinets on either side of the hearth and above it hangs a print by Maser, a source of inspiration for the entire scheme.

TRICK #2:

Try it in Tonal

A bedroom has different requirements than social spaces and needs a more restful palette. Instead of the normal-formal, Róisín has gone for aged sage and blackened greens in the master suite, in a variety of shades across the same tone. Walls are painted in Fleetwood's Retreat. The green velvet curtains are by Designers Guild (Designersguild.com). Lighting is from Out There Interiors (Outthereinteriors.com) and the blue velvet chair is from Artemest (Artemest.com). A trick to try is the paint treatment the team has given the fireplace: picked out in bands of complementary greens, it's a standout.



TRICK #3:

Blue and Green Should be Seen

Forget the old maxim that blue and green should never be seen – that's just for those who are afraid to rock the bold boat. In truth, this is a shade match that performs, and where better to try it than in a bathroom? In the Moroccan-inspired *en suite*, polished plaster walls and ceilings from Stucco (Stucco.ie) juxtapose with a monolithic concrete sink and vanity unit, custom-made by Concrete Design Studio (Concretedesignstudios.ie), completed in a punchy blue hue. Finishing touches are the wall lights are from Atelier Areti (Atelierareti.com) which flank a custom-designed brass mirror. Sanitaryware fittings are from Versatile Bathrooms (Versatilebathrooms.ie). The chandelier is from Mullan Lighting (Mullanlighting.com).

TRICK #4:

Inside Out

Take a leaf out of our Portuguese pals' playbook: tiles are not just for indoors. In this scheme, Morocco was again the inspiration for the garden, which is a paved haven. Blue zellige tiles were used on an exterior wall and are complemented by reclaimed floor tiles from Bert & May (Bertandmay.com), used on the patio area.



Unsure where to begin? Take a tip from Róisín and look in your wardrobe for inspo. If you wear a lot of brights, that's your cue for colour, for example



TRICK #5:

Keep it in the Family

Learning to create harmonious schemes is tricky, but one tactic to try is to limit your palette within a colour family to create a result that works well from room-to-room. In this house, one of the key design challenges was for the colours to work when seen from the vantage point of other rooms. "The idea was to frame each space, so when you look in, they complement and flow. It's almost like colour-blocking in different tones," Róisín explains. The combination of Fleetwood's Copenhagen Blue in the sitting room and Aged Wine in the hall works visually because they're right beside each other on the colour wheel, therefore tonally they're analogous.

Róisín Lafferty has founded CREATE by hld, a tailored design service starting at €650, providing you with the Kingston Lafferty Design tools and expertise to implement your own beautiful scheme; Createbyhld.com.

TRICK #6:

Bling it With Brass

Not your average kitch sitch, one of the standout elements of this cooking space is the use of materials. Zellige tiles aside – which cocoon the units and cleverly mimic colours used throughout the house – the brass detailing adds a level of sophistication. Both satin-finished and polished brass are used and we love the bespoke backsplash for the hob: designed by the Kingston Lafferty team, it's made from ripple glass in a polished frame and offers both form and function. Walls and cabinetry are painted in Fleetwood's Plum Brown. Zellige tiles were sourced from Mosaic del Sur (Mosaicdelsur.com). The wall light is from Apparatus (Apparatusstudio.com). Units were custom-made by Moore O'Gorman Joinery (Mooreogormanjoinery.ie).



A clever idea: the backsplash is polished brass and ripple glass and echoes a window at the end of the run of kitchen units

Eske chandelier, €2,706,
Mullanlighting.com

Fleetwood French
Blue Pantone
18-4140,
Fleetwood.ie

Dutchbone Devi
wall lamp, €157,
Houseology.com

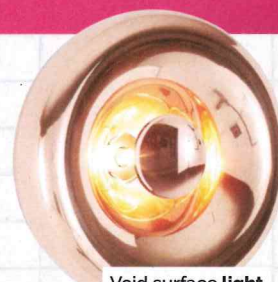
Maser B&A Red Artist
Edition Photopolymer
print, €400,
Maserartstore.com

Strom vase, €82.50,
Designist.ie

Lacquered walls, brass
accents and colour
blocking are hallmarks
of this stunning space

GET THE LOOK

Steal the style of this
colourful interior with
pieces that pack a punch



Void surface light
in copper €450,
Tomdixon.net

HK Living black and
brass display rack,
€989, Woodesign.ie

Kartell La Boheme
3 stool in red, €159,
Amara.com

Medium oval pouffe
in Bordeaux, €799,
Fermiliving.com

Peace accent chair,
€499, Dfs.ie