

COMMERCIAL PROJECTS



MUMFORD
& WOOD

Our Approach

Whether you are creating a landmark project or a more modest commercial building, the team at Mumford & Wood stand ready to deliver the expertise you need.

From concept to completion, our dedicated and professional team will work with you side by side throughout the project, offering support and guidance at every step.

From expert advice at the outset to surveying, drawing provision, and project management, we will become an integral part of your working panel.

With an outstanding choice of continually developed product ranges offering industry-leading technical performance, we also create and deliver bespoke solutions and designs on a regular basis.

Deep Rooted Quality

The many strong relationships Mumford & Wood enjoys with some of the UK's leading architectural practices, construction firms and developers are a testament to our approach. Once your products are in the experienced hands of our craftspeople at our state-of-the-art facilities in Tiptree, you can be sure that every detail has been considered. Beautifully engineered and meticulously prepared for transportation, your products will arrive safely on site. Once handed over, our aftercare team are on hand to offer any required support.



CONSERVATION



CLASSIC



HERITAGE



STEAMHOUSE, BIRMINGHAM

The STEAMhouse building dates back to 1899 and was seriously damaged by fire in 2007. Previously used as a manufacturer for the Eccles Rubber & Cycle Company, this Grade A listed building undertook a £70m transformation to become the creative hub it is today.

Mumford & Wood supported this transformation by designing and manufacturing 45 bespoke timber windows and doors tailored to fit the unique openings on the façade of the building.

With strict planning requirements in place, we understood the importance of replicating the details of the original windows while offering the performance of a modern-day product. Timber Casement windows were designed for the ground and first floors and Timber Vertical Sliding Spring Sash windows for the second floor. These were chosen from our Conservation range and tailor-made to replicate the original frame margins and Ovolo profiles.

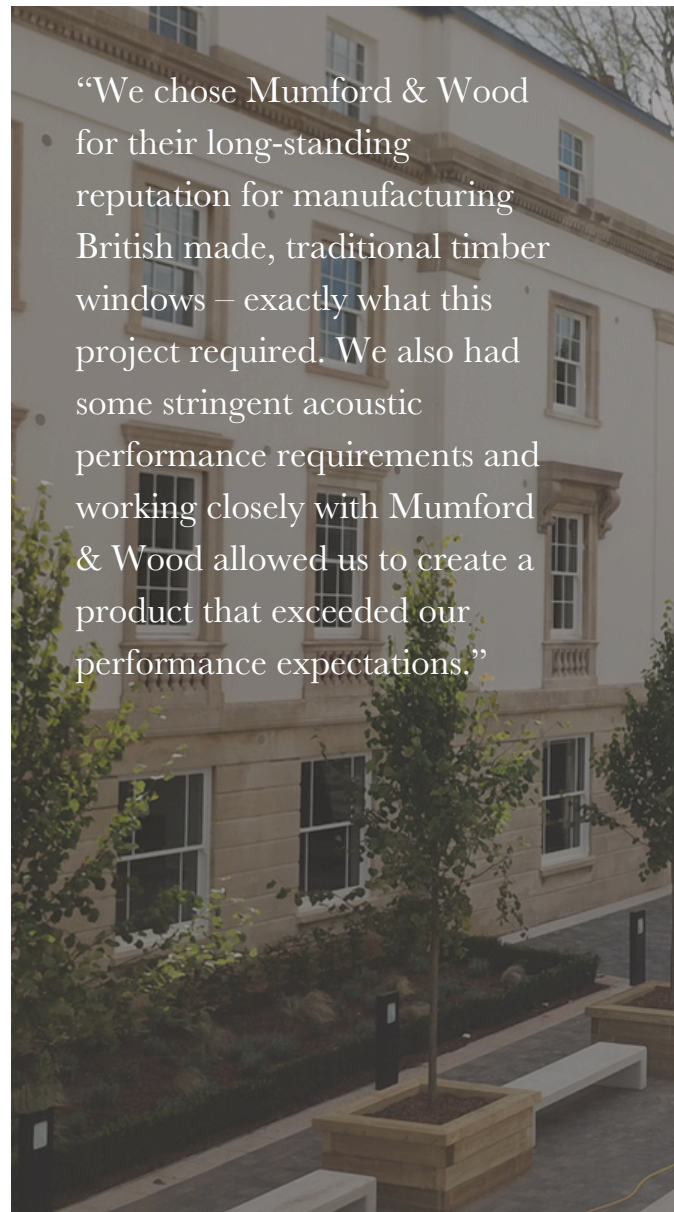


ST MARY'S, BRISTOL

The original hospital building was retained, with the addition of a 4-story extension, a 3-story new build, 8 townhouses, and a new communal space for students that includes an on-site gym, entertainment room, lounge, and kitchen for private dining.

Planning dictated that this undesignated heritage asset retain many of its original features, as it is situated within a conservation area among various listed buildings.

This led us to recommend timber Box Sash Windows from our Conservation range. All 109 Box Sash windows were manufactured in our British factory, featuring high-acoustic trickle vents and laminated glass in 24mm double-glazed units, ensuring noise travel is kept to a minimum between accommodations.



“We chose Mumford & Wood for their long-standing reputation for manufacturing British made, traditional timber windows – exactly what this project required. We also had some stringent acoustic performance requirements and working closely with Mumford & Wood allowed us to create a product that exceeded our performance expectations.”





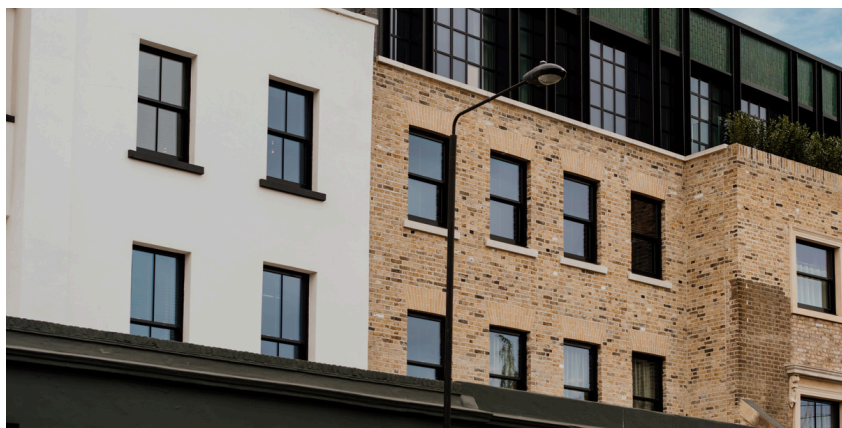
KOKO, CAMDEN

We were approached to help breathe some life back into this historic Grade 2 Listed building. This project was particularly challenging due to the heritage profile requirements and high acoustic performance requirements.

We tested for and achieved the required acoustic rating through our product development.

The front elevation of KOKO has single-glazed windows and doors with period profiles. The windows had been painted white over the years, but we stained the replacements Teak & Nut to closely match the original architect's vision.

The side and rear elevations have enhanced acoustic vertical sliding and casement windows, and the doors feature unique panel mouldings that match the original designs. We fitted the windows to the pub, restaurant, library, piano bar, jazz bar, rehearsal rooms and private viewing areas of the main concert hall.





Our early experiences, relationships and surroundings shape who we become.

PICADILLY CIRCUS, LONDON

We designed and manufactured 46 Box Sash and 36 Casement timber windows. The windows were installed into commercial and residential buildings on either side of the giant screens surrounding Piccadilly Circus.

The client had stipulations regarding the tint and reflection values of the new windows. They had to match the adjacent glazing in the curtain walling exactly.

Mumford & Wood sourced special glass from Germany through a thorough research and development project. Being in such a noisy part of London, we also had to design the products to meet strict acoustic requirements.

In Shaftesbury Avenue, we had to consider 4 glazing bar layouts over 5 floors. To ensure we could replicate what was there previously, precise measurements had to be taken from the existing units.

Sherwood Street and Glasshouse Street had bespoke profiled embellishments to match those we surveyed on salvaged frames, which involved visits to the site and Hull, where some frames were salvaged and stored.

We found that the frames had an Ovolo moulding internally and a variation of a Lambs Tongue moulding externally. The development of these details led to Mumford & Wood investing in new tooling to achieve the finished profiles exactly.

We produced numerous samples of the moulded profiles, all hand-finished by our joiners, before reaching the approved details to begin manufacturing the finished units.







NEW BOND & BROOK STREET, LONDON

Labelled as one of the most expensive shopping streets in the world, New Bond Street in Mayfair underwent a complete transformation as part of the Hanover Square Masterplan.

We were tasked with designing windows that were sympathetic to the originals they were replacing, met the high-performance requirements set out by the architects, and were backed by comprehensive warranties.

From 71 New Bond Street around to 14 Brook Street, beautiful new Sash windows and Casement windows from the Mumford & Wood range were specified across several buildings.

The architecture in New Bond Street and Brook Street varies from building to building, and as such, the new windows specified need to be in keeping with each structure's individual style. This included a variety of glazing bar formations, arched Sash windows, and, on 64 New Bond Street, our bespoke curved on-plan Casement windows.

Several facades along the street feature beautiful stone-carved designs and statues, which make these sympathetically designed windows perfectly in keeping with the street's heritage.





WELLS STREET, LONDON

This project in London's Fitzrovia created new office and retail space spanning 76,000 square foot of space. The site was demolished in part whilst retaining the 1906 façade fronting Wells Street to reflect the surrounding architecture.

With sustainability at the forefront of this project, timber windows from the Conservation range were a perfect fit. In total, we manufactured 72 Casement Windows, 20 Box Sash Windows and 1 curved-on plan shopfront.



NEW CAVENDISH STREET, LONDON

The Howard de Walden Estate wanted to replace the windows like-for-like to retain its essential Georgian heritage and ensure consistency with other buildings in the Marylebone area. Grand Sash windows, some with arched tops and all with conservation 'Dentil' style mouldings, have been installed across the building, as well as replacement Casement windows on the top floor. All have been specified in white, replicating the originals and preserving the building's celebrated architecture.





ST CHRISTOPHER'S VILLAGE, LONDON

Albion House falls within Southwark Council's 'Borough High Street Conservation Area'. The Council informed us that any replacement windows needed to look as similar as possible to the single-glazed, slender profiled originals being removed and provide superior double-glazing performance and acoustic benefits.

We offered elegant and authentic timber Sash windows to make the most of the city views.



HANNINGTONS LANE, BRIGHTON



The Hanningtons estate sits in the heart of 'The Lanes' in Brighton, a series of narrow alleyways and roads renowned for its restaurants, shops and traditional English pubs that are a staple of the culture and economy in Brighton.

Sash and Casement windows as well as French doors from the Conservation range with a range of glazing bar options were installed in the new units as well as a number of buildings that were refurbished at the same time. In keeping with The Lanes style, some of these Sash windows are finished in a variety of colours, from reds to greens, creating a colourful atmosphere, perfectly in keeping with the area.

Puget's Cottage also received a lot of work to restore it to its former glory. As a Grade II listed building, new Sash windows from the Mumford & Wood Historic range were approved by the local Conservation Authority.





ARCHITECTS PRACTICE, LONDON

This architectural practice relocated to the corner of Commercial Street and Fashion Street, having outgrown their original studio.

Dark grey Sash windows were specified throughout the upper floors, mirroring the building's origins and surrounding area, providing an edgy yet traditional appearance. The practice also underwent an extension, including a new roof terrace. Mumford & Wood supplied new timber doors in a style that matched the windows.





RATHBONE PLACE, LONDON

Situated in the heart of Fitzrovia, close to Oxford Street, an extensive refurbishment of 15 Rathbone Place has made modern, spacious retail and office units available to prospective businesses. As the building is situated within a conservation area, the front façade remained unchanged whilst everything behind was demolished and later rebuilt. The client chose new fixed Casement windows from our Conservation Range throughout the building. All are finished in white, with some featuring astragal glazing bars, and all match the original glazing proportions perfectly and conform to the specifications set out by the local conservation authority. These all feature modern double-glazing, which improves the heat retention of the building as well as reduces the levels of noise from the busy London streets.



BLOSSOM STREET, LONDON

The Elder Street Conservation Area, which encompasses the Norton Folgate site, is a heritage-rich part of East London. A significant portion of the Norton Folgate masterplan focused on bringing vacant or underused buildings back into active use. Many of the structures had suffered from neglect or had been repurposed for uses that no longer suited the area's evolving character, such as Victorian Warehouses and Georgian properties. Reimagining these spaces, the development aimed to breathe new life into the area, offering opportunities for a variety of uses such as retail, office spaces, and residential units.

For this project we manufactured 142 bespoke Box Sash Windows, 19 Casement Windows, 48 Conservation Doors and 2 Bi-folding Doors, all in various styles to suit the heritage of each building.



Photos courtesy of AHMM



Photo sourced from Rushton Hall

RUSHTON HALL, NORTHAMPTONSHIRE

Dating back to the 1400's Rushton Hall has experienced a colourful past and has previously been owned by the crown until sold to William Cockayne, who at the time was Lord Mayor of London. Now, primarily used as a wedding venue, Rushton Hall boasts luxurious accommodation and beautiful orangery.

25 products from our Heritage range sit perfectly within it's historic surroundings, in addition to 12 doors, 7 Casement windows, and Spring Sash windows from our Conservation range.





GRAYSON PERRY HOUSE, ESSEX

In this daring collaboration between an award-winning practice with an international reputation for delivering outstanding projects and leading contemporary artist Chelmsford-born Grayson Perry, this iconic building has been described by some as a ceramic-clad gingerbread temple.

The made-to-order timber Conservation products feature Victorian-style sash windows with spring balance operation, adorned with fixed curved semi-circular fanlights to emphasise height and magnitude. Coordinating Conservation Casement windows and doors feature a contemporary-style moulding.

All products have been finished in purple red, RAL 3004, with a single door set supplied in yellow. Triangular casements were also designed and manufactured by Mumford & Wood. The sliding sash windows are positioned in pairs of diminishing sizes in the gold roof, running from front to back of the house.



“The windows and doors are truly glorious.”

REGENTS ARCADE, CHELTENHAM

This 185,000 sqft shopping centre attracts 100,000 visitors a week and offers over 60 shops, a wide variety of restaurants, and cafes. As part of its refurbishment, Mumford & Wood manufactured bespoke, high-performance timber Sash windows and installed them at both the first and second-floor levels of the Arcade.

Our Conservation Range was selected for this project to meet the stringent requirements of local planners and are BSI A+ energy rated ensuring the comfort of customers and staff in an open-plan store layout.



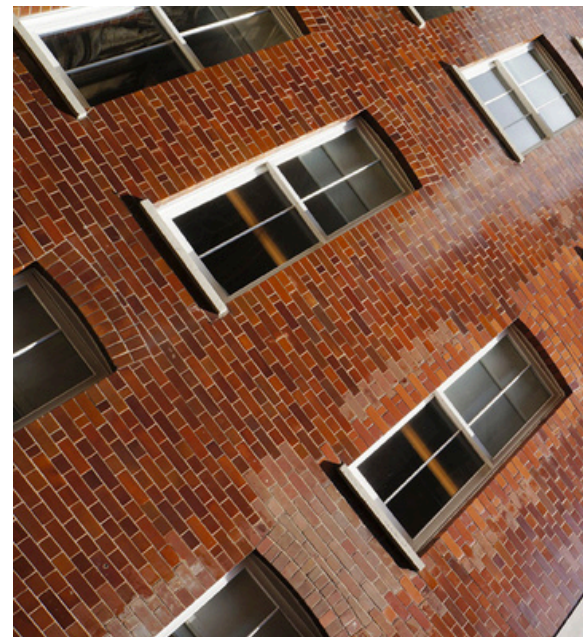


FLEET STREET, LONDON

Many of Fleet Street's buildings date to the 16th century and are protected by Listed status. 185 Fleet Street is a notable attraction at street level due to the original wording façade still in place on the exterior of the building. These give note to publications previously managed at the premises, such as the 'Sunday Post' and the 'People's Journal'. Passers-by at street level can see the original printing presses on display at the front of the building.

New flush Casement windows and Box Sash windows from Mumford & Wood were specified and approved after their designs were shown to closely match the original windows being replaced. This ensured the building's heritage was respected and maintained.

Included in this were bespoke, arched flush Casement windows that fit into the unique architecture at the front of the building.



WARDOUR STREET, LONDON

Wardour Street hosts a building with an imposing red stoned façade. It comprises of three retail units and five floors of office space.

The window specification called for fixed Casement windows with limited openings and the essential replication of intricate details. This included distinct feature mouldings to the transom and mullions in order to remain in keeping with the architectural style of this central London location.

A number of opening sections were specified within the plans which were required to serve a modern and practical purpose linking complex electronics to the building's fire system. Smoke actuators on an automatic mechanism had to be capable of operating the specified window openings for the provision of ventilation in the event of a fire and to satisfy current fire regulations.

The windows had to incorporate the wiring and mechanisms whilst retaining the required aesthetics to the satisfaction of the local planning authority which required a careful balance. To achieve this, the electronic systems were installed during the window manufacturing process and supplied to site for connection to the building.





CHELTENHAM LADIES COLLEGE

Replacement period-style timber windows and doors from Mumford & Wood's award-winning Conservation range were specified in the refurbishment of junior boarding houses at Cheltenham Ladies' College.

Box linings were created for the Sash Windows to match the original windows, achieving a wide external frame.

In addition, a horizontal pivot Casement window was designed and manufactured especially for the Cheltenham Ladies' College project, perfectly matching the original Casements. These windows pivot centrally at the midway point of the window's height. A new hinge system was designed and sourced for this project.



SAATCHI GALLERY, LONDON

Mumford & Wood supplied single-glazed, historic Box Sash timber windows during the dramatic renovation of the main building of the Duke of York's HQ, Chelsea, now the home of the Saatchi Gallery.

Once the base of the Royal Military Asylum, completed in 1803, a century later becoming the working base of the Territorial Army, this imposing building has seen insensitive internal treatment while it has suffered little change externally.

Planners prioritised the window replication. Existing glazing bars on the ground and upper floors ranged from 15-17mm, and approval was given for a consistent and slender 17mm glazing bar throughout.

A combination of 90 semi-circular and square-top windows, including a fire-resistant alternative for the lift shaft, has been designed and manufactured.



MANCHESTER UNIVERSITY

The University placed great importance on upgrading the single-glazed windows to incorporate double glazing, which helps to reduce the carbon emissions associated with heating the building while improving comfort levels for those who work in it.

Most of the windows were in total disrepair. Mumford & Wood were tasked with updating 153 timber Sliding Sashes and 164 Casement windows. Many of the Timber Sash Windows were required to include a horizontal pivot window opening, replacing like for like in this beautiful listed building.

We were also required to develop completely bespoke Georgian Ovolo embellishments and sash horn designs to match the originals. This was achieved through a perfect blend of precision machinery and expert joiners, who hand-finished every product.

Due to their size and weight, the windows were linked in sections, ensuring they were safe to manoeuvre on site.





TURNBERRY RESORT, SCOTLAND

Mumford & Wood was chosen as the supply partner to replace over 1000 windows and doors as part of the major £200m restoration project at Turnberry Resort.

This extensive refurbishment has included the remodelling and upgrade of all 103 bedrooms and public spaces within the existing hotel and the construction of a new, 500-person grand ballroom at this world-renowned golfing and leisure venue.

The specification of Conservation products includes top-hung Casements, many in a double and triple-height configuration; large fixed sashes, including curved on plan; decorative curved header sliding sash windows; double and single French door sets; and special bullseye-shaped windows.

At a later date, Mumford & Wood was requested to supply additional products to the resort's new Spa facility - a restful haven with beautiful views over the Irish Sea. Casements and double and single French door sets ensured that this new addition blended seamlessly into the structure of the original hotel.



KOHO CAFE, BUCKINGHAMSHIRE

Previously a glass-fronted art gallery, the roadside frontage has now been completely redesigned with wide, double-glazed, six over six sliding Sash windows. A recessed, half-glazed, double entrance door with an overhead fanlight completes this elegant façade. Traditional timber panelling completes this elegant façade. Replacement sash windows in a bay configuration have also been specified for the first-floor windows of a separate apartment. This has been converted to a commercial office and accessed via its private entrance door adjacent to KoHo.



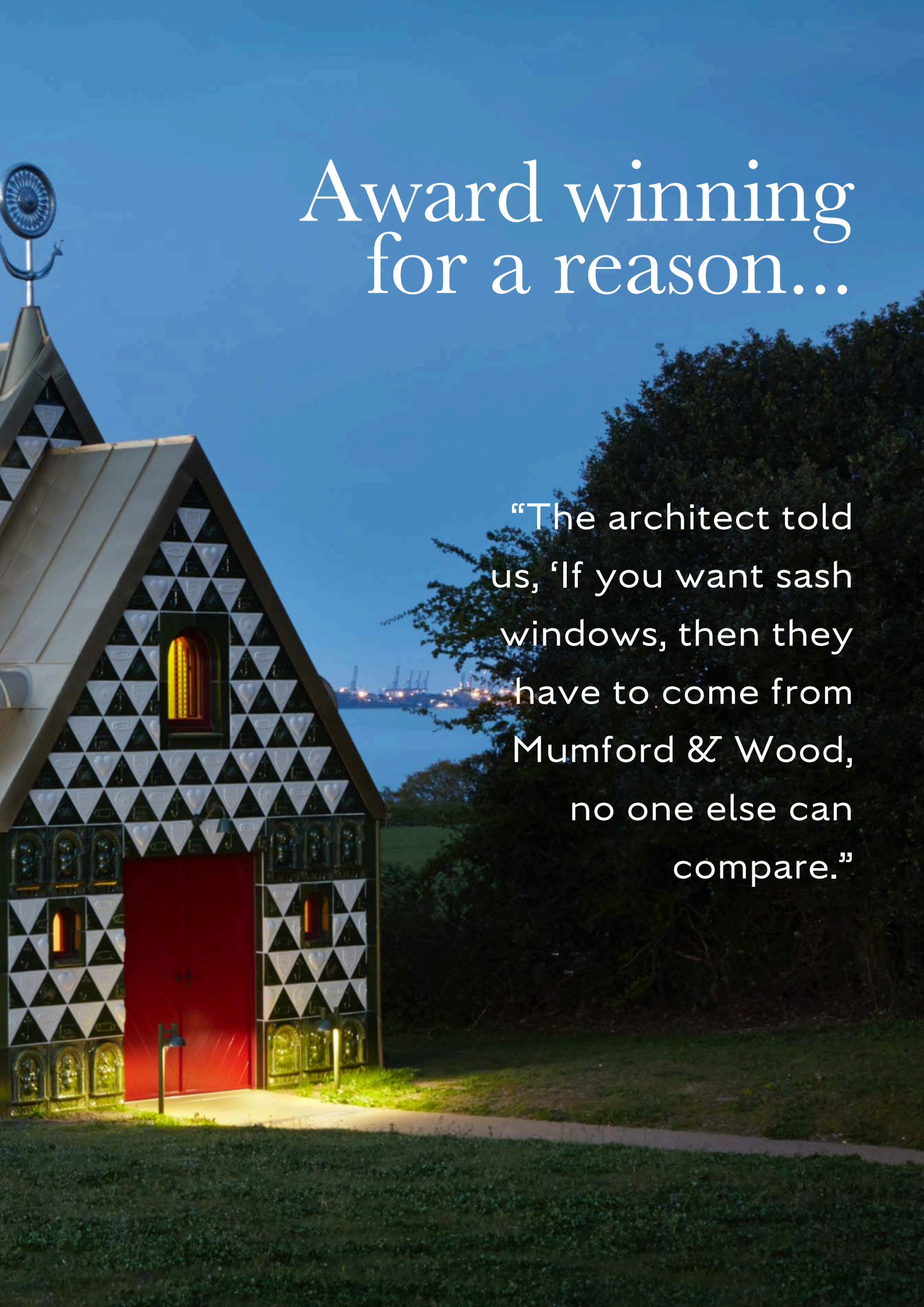
JULIE'S RESTAURANT, LONDON

As part of its exciting relaunch, Julie's Restaurant, a longstanding local favourite in the heart of Holland Park, has been reimagined as a stylish French brasserie. Nestled among the residential streets of this picturesque neighbourhood, Julie's offers a sophisticated dining experience inspired by the charm of Parisian eateries.

Mumford & Wood were tasked with replacing the timber sash windows on the restaurant's facade.

The windows were crafted in rich, historic browns and deep reds, colors that evoke a sense of timelessness and warmth.



A photograph of a modern building with a triangular facade made of black and white triangles. The building has a red door and a blue sky background. The text "Award winning for a reason..." is overlaid on the top right of the image.

Award winning
for a reason...

“The architect told us, ‘If you want sash windows, then they have to come from Mumford & Wood, no one else can compare.’”