



Capability Statement

zinfra.com.au



Our Vision

To become a 'Trusted Partner in Energy', by being the safest and most efficient field force contractor in the energy utilities sector.

Our Values

We are guided daily by the values that underpin our culture, and drive the way we interact with our clients, stakeholders, partners, and each other.



Better together

We value the diversity of our people, working together to achieve great outcomes



Be accountable

We accept responsibility to deliver our commitments



Find a better way

We find improved and innovative ways to work



Think like a customer

Our actions consider our customers, community, and other stakeholders



We care

We value safety and wellbeing for ourselves, our community and environment

Our Safe Commitments

We are guided by four SAFE Commitments: keeping it simple to enable safe outcomes; being accountable by speaking up, listening and sharing lessons learned; to focusing on managing our critical risks; and doing it safely every time.



Acknowledgement to Country

"We acknowledge the Traditional Owners of the lands on which we operate and recognise their continuing connection to land, waters and culture. We pay our respects to their Elders past and present."



We are Australia's trusted partner in energy

Zinfra is a leading delivery partner with the specialist knowledge to safely and efficiently design, build, operate and maintain energy infrastructure for Australia's asset owners.

Each day we live our motto of "Trusted Partner in Energy" through establishing long-term, genuine client relationships, a strong safety-first focus, and continual innovation in our ways of working so we can always deliver the right outcome.

What we do matters. Energy makes a difference to our communities, and we have millions of end users - homes, businesses and communities - relying on the infrastructure we build and maintain to power their lives each day.

We're integrated into local communities, whether it's constructing and upgrading assets, maintenance, or in a crisis, keeping essential services going and people connected in all seasons.

We are proud to keep Australia connected while we prepare the nation to transition to a renewable future.

Visit www.zinfra.com.au



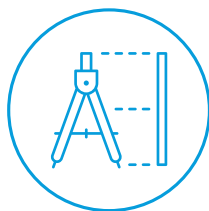
Our Experience and Capability

We design, build, operate and maintain Australia's energy infrastructure

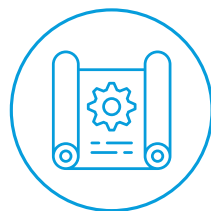
Our Services



Engineering



Design



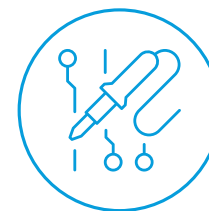
**Project
Management**



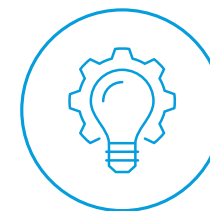
Construction



**Operations and
Maintenance**



**Testing and
Commissioning**



**Fault and
Emergency
Response**

Delivering a portfolio of projects and services that exceeds AUD\$1B per annum, our expertise means we're able to devise and implement safe, cost effective and quality driven, integrated solutions that we can take great pride in.

Each day you can find the Zinfra team delivering:

- The daily maintenance and small projects that help keep the lights on and gas flowing.
- The construction of data centres that power the digital world.
- Multi-million-dollar infrastructure projects and service contracts which are providing vital energy services today and preparing for Australia's future energy transition.
- Fault and emergency response works restoring energy to communities impacted by incidents such as bushfires and extreme weather events.
- The construction, operation and maintenance of new energy assets such as community batteries, biomethane plants, and hydrogen facilities
- The design, upgrade and connection of networks to renewable energy infrastructure such as wind and solar farms and large energy storage systems



Our Partnerships

We partner with Australia's energy infrastructure asset owners

Each day we live our motto of 'Trusted Partner in Energy', with a commitment to building genuine partnerships with our clients and communities and take a long-term view to our contracts and relationships.

With a strong safety-first focus, and continual innovation in our ways of working, we use our industry experience to achieve the right outcomes for our clients every day. We win when they win.



Our Clients

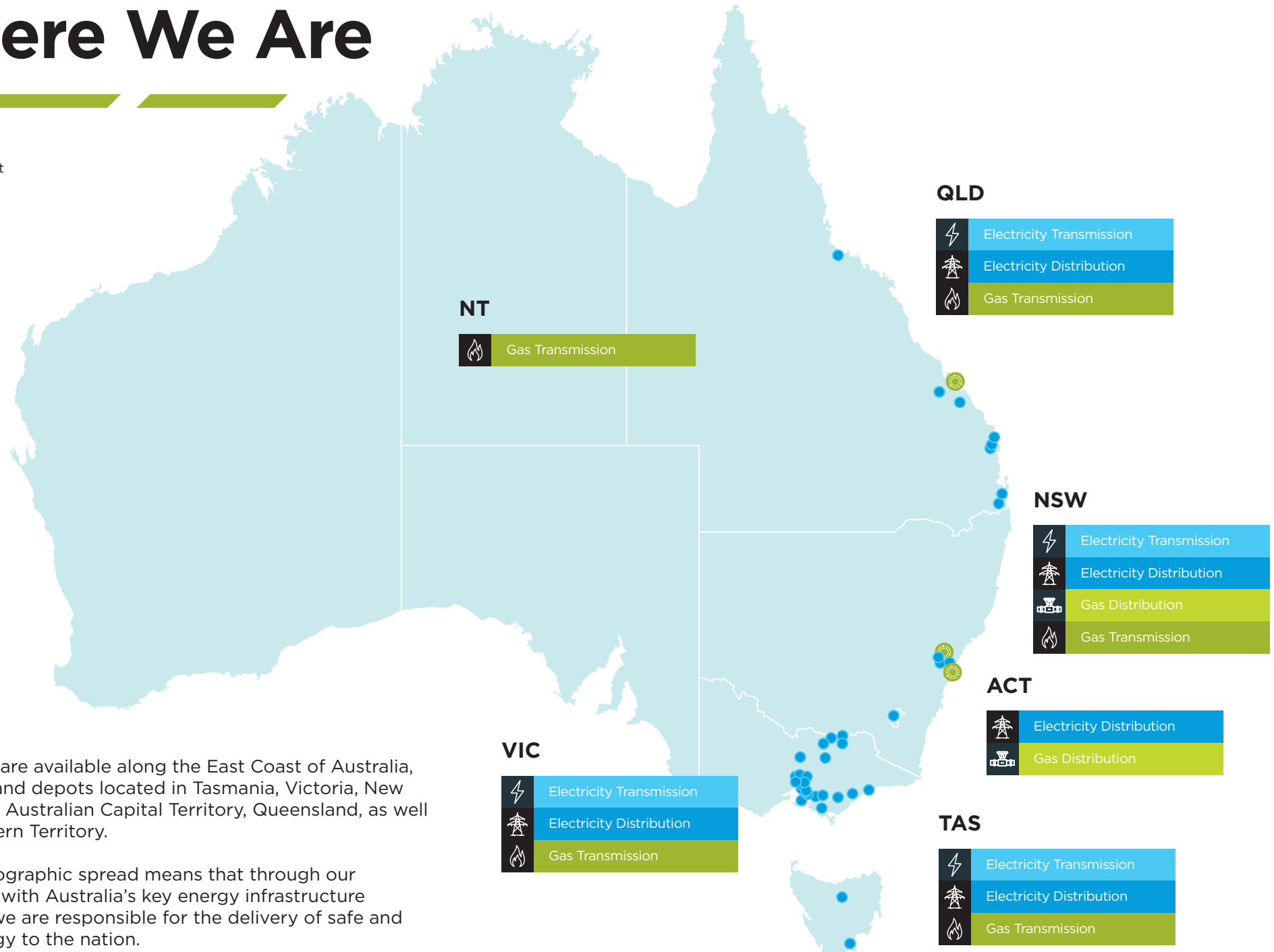
AusNet



evoenergy



Where We Are



Our services are available along the East Coast of Australia, with offices and depots located in Tasmania, Victoria, New South Wales, Australian Capital Territory, Queensland, as well as the Northern Territory.

Our wide geographic spread means that through our partnerships with Australia's key energy infrastructure companies, we are responsible for the delivery of safe and reliable energy to the nation.

Our Experience in Gas

Zinfra is a leading gas energy specialist in the construction, operation and maintenance of gas distribution and transmission assets across Australia.

Transmission

We are specialists in the management and maintenance of pressure reduction facilities, compressor stations, turbine and reciprocating engines, gas processing plants, as well as more than 3,500km of high-pressure gas pipelines in TAS, VIC, ACT, NSW, QLD, and NT.

Distribution

We provide construction, operations and maintenance services including relocation, upgrades, and emergency repairs.





[Watch more](#)

Kurri Kurri Offtake & Metering Station

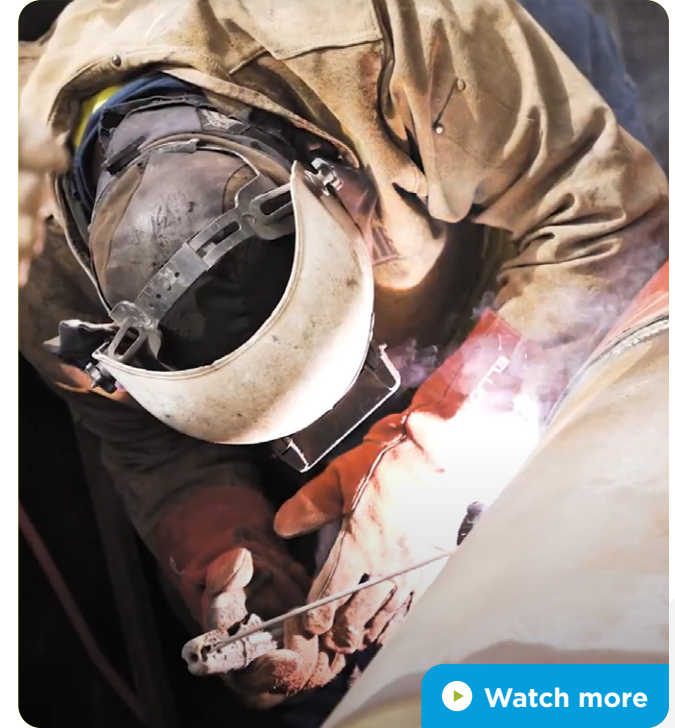
We successfully completed a project that involved construction of a 450-metre gas pipeline and installation of a metering station to supply gas from the Jemena Gas Network to Snowy Hydro's Hunter Power Project. This gas-fired power station will help meet electricity demand as Australia transitions to renewable energy.



[Watch more](#)

M12 High Pressure Gas Pipeline Relocation

In 2024, the team safely relocated two kilometres of high-pressure gas pipeline without disrupting gas supply or road users to support the delivery NSW Government's M12 Motorway project.



[Watch more](#)

Dora Creek Validation Dig

The team conducted a validation dig and repairs on Jemena's gas pipeline at Dora Creek to ensure the pipelines' integrity to continue the safe and reliable flow of energy to customers.

DELIVERED BY

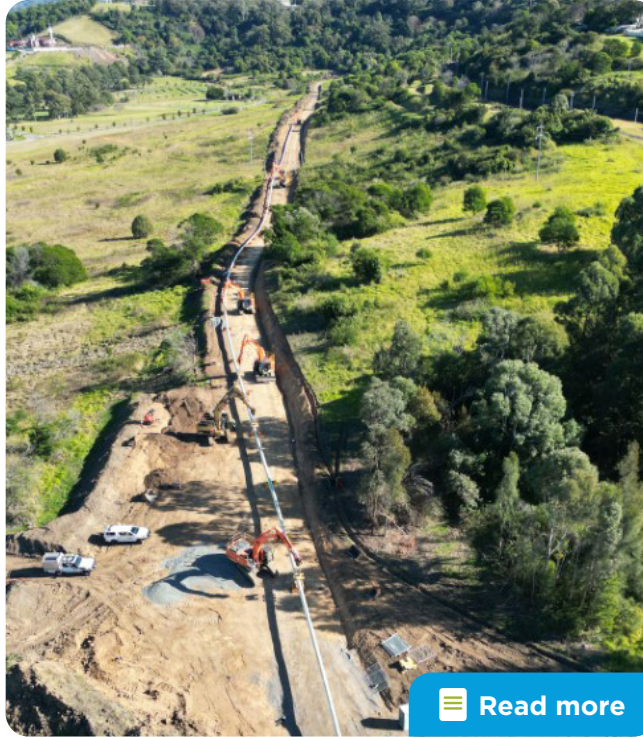




[Read more](#)

Tasmanian Gas Pipeline Partnership

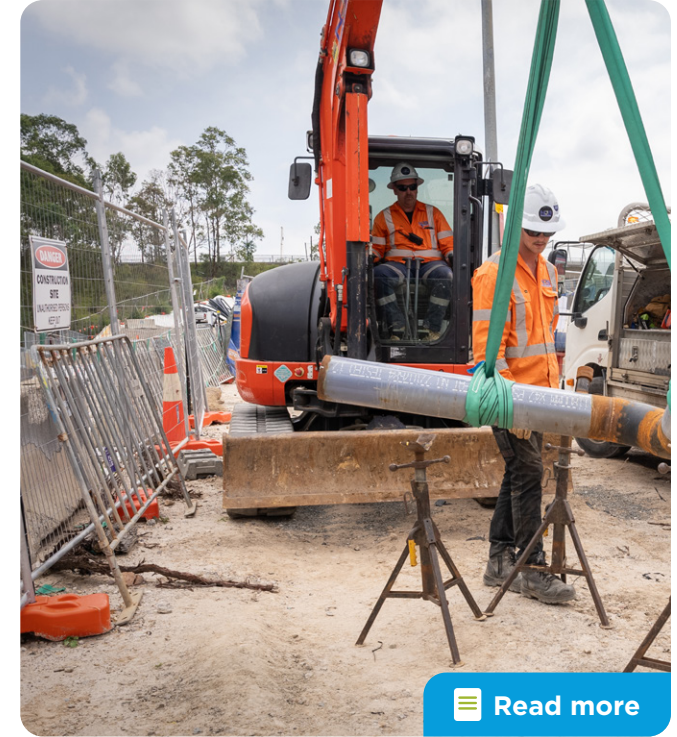
Since its construction in 2002, Zinfra has held the services contract on the Tasmanian Gas Pipeline. The scope of work is the provision of operation, maintenance and inspections and managing the control contract with Jemena directly as a sub-contractor.



[Read more](#)

Port Kembla Pipeline Project

Zinfra was appointed to construct a 12km gas transmission pipeline and a new gas metering station at Port Kembla to connect Squadron Energy's Port Kembla Energy Terminal with Jemena's existing Eastern Gas Pipeline. The complex project included design, procurement and construction and it will be capable of supplying more than 75% of NSW's gas needs and avert potential shortfalls.



[Read more](#)

Servicing Jemena's Gas Networks and Assets

Zinfra proudly delivers the operations and services on Jemena's Gas Network comprising of approximately 25,000 kms of pipeline in regional and metropolitan NSW. In addition, the team manages repairs, operations, maintenance, connection and capital works for assets including the Eastern Gas Pipeline, the Queensland Gas Pipeline, Darling Downs Pipelines, Northern Gas Pipelines, and Roma North.





Our Experience in Power

Zinfra is a leading power energy specialist in the construction, operation and maintenance of electricity transmission, distribution, and substation services across Australia.

Transmission

Our transmission lines team is a group of technical specialists with experience in delivering large or complex transmission line projects up to 500kV across Australia.

Distribution

We have comprehensive experience in overhead and underground construction, operations, maintenance, inspection, and fault and emergency response.

Substations

We are a specialist provider in the design, construction, operations and maintenance of zone and terminal substations.

Fibre Optics

We have a dedicated fibre optics team based in Melbourne that helps our clients build the reliable and resilient fibre optic networks that support Victoria's electricity distribution and transmission infrastructure.



[Read more](#)

Marker Ball Removal Project

We partnered with AusNet to successfully carry out the sky-high operation to remove four faulty marker ball flashers from Bolte Bridge's overhead power lines.



[Read more](#)

Zinfra and TasNetwork's Partnership

Our team partners with TasNetwork on everything from routine maintenance to major upgrades since 2014.



[Read more](#)

Reducing bushfire risk in Melbourne's North-West

We worked with Jemena on an extensive work program that aimed to reduce the risk of powerline-related bush fires.



Visy Glass Recycling Super Facility

We partnered with Energy Queensland to complete a critical infrastructure project involving the installation of two new underground 33kV feeders to support Visy's groundbreaking recycling and manufacturing operations.

DELIVERED BY





AusNet Transmission and Distribution Network Partner

Since 2019, Zinfra has been delivering operations and maintenance services on AusNet's transmission assets, delivering \$45M work of small projects, connections to wind and solar assets, and delivered first response works. In August 2025, Zinfra took over the operations, maintenance, repairs and emergency response on AusNet's electricity distribution network located in regional and rural parts of Victoria's east and Melbourne's northern and eastern suburbs.



Partnering with United Energy and Jemena

We manage the operations and maintenance of United Energy's and Jemena's electricity networks based in Victoria providing 24/7 operations, maintenance, fault and response services. This includes distribution overhead lines, sub stations, zone substation maintenance, customer projects, and asset inspections.



Tasmanian Transmission Tower Upgrades

Our skilled transmission lineworkers conquered the tough terrain of Tasmania's southwest coast at Strathgordon to complete a TasNetworks transmission tower maintenance project. With rough steep tracks making traditional crane use impossible, the team created a bracket and prop system to replace tower legs on multiple 220kV double-circuit towers located along the rough steep tracks of the Gordon-Chapel Street transmission line.



Our Experience in Projects

Zinfra brings experience in all aspects of the project management discipline, along with practical experience in the development, management and delivery of EPC, D&C and construct only projects.





Anakie Tower Rebuild

In response to severe weather in February 2024 that caused damage to AusNet's transmission towers along the Sydenham and Moorabool 500kV line, our team was mobilised to deliver emergency response services to install six temporary emergency response towers, near the Victorian town of Anakie. Post-event, the Zinfra team was re-engaged to deliver the design and construction of six new permanent high-voltage transmission towers to ensure the reinstatement of reliable power in the region.



Waratah Super Battery

The Waratah Super Battery (WSB) is a large battery energy storage system (BESS) being built in New South Wales, designed to enhance grid reliability in the Hunter, Sydney, and Illawarra regions. Our role was to upgrade TransGrid's electricity grid network to increase the allowable power throughout many areas of the 330kV network.



[Read more](#)

QNI Transmission Upgrade

Our team delivered more than 82,000 hours of manpower to deliver two main components of the Queensland-NSW Interconnector (QNI) upgrade.



Northern Gas Pipeline BI Direction

Our Gas Projects team designed, constructed, and installed the necessary infrastructure to make Jemena's 622km Northern Gas Pipeline bidirectional to respond to changing gas market conditions and needs.

DELIVERED BY





Renewable Energy

We are supporting Australia's transition to a low carbon future

Through our partnerships with Australia's key energy infrastructure companies, we are a key enabler of our client's energy transition ambitions positioning us at the fore of supporting Australia's low carbon future.

We have experience delivering renewable energy projects such as biomethane plants and hydrogen facilities to designing, upgrading and connecting networks to renewable energy infrastructure such as wind and solar farms, to small and large-scale battery energy storage systems.

We are committed to the continued upskilling and development of our people in the construction, operations and maintenance of the energy infrastructure of tomorrow and building the workforce of the future with top-class graduate, trainee and apprentice programs.



[Read more](#)

Stockyard Hill Wind Farm Transmission Line & Substation

Construction of new transmission lines and terminal station to connect the Stockyard Hill Wind Farm with an expected capacity of around 530MW from 149 turbines.



[Watch more](#)

Malabar Biomethane Project

We were engaged to project manage engineer, construct and operate and maintain Australia's first biomethane injection plant to support the decarbonisation process for Jemena's gas network.



[Read more](#)

Hydrogen Production Facility

Zinfra has signed an Operations and Maintenance contract with Summit Hydrogen Gladstone, a wholly owned company of Sumitomo Corporation, Japan, for its pioneering Hydrogen Production Facility in Yarwun, Queensland strengthening Zafra's role in Australia's renewable energy transition and advancing its leadership in hydrogen and gas operations.



[Read more](#)

Community Batteries

Zinfra is proud to support Jemena delivering two new community batteries in Bellfield and Coburg, Victoria, key assets in the energy transition. We used our expertise in designing and installing energy storage solutions to help reshape the grid for smarter, more sustainable energy solutions.

DELIVERED BY



Our People

At Zinfra, we consider people our greatest asset

Our strength is our workforce. We have an ever evolving, diverse team of more than 2,800 team members comprising of engineers, project and construction managers, designers, gas technicians, pipeline operators, line workers, cable jointers, electricians, electrical operators, fibre optic technicians, surveyors, asset inspectors, testers, commissioners, planners, schedulers, labourers, estimators, HSE professionals, and more.

We are committed to building a diverse team that represents the communities in which we operate, investing in the continued learning and development of our people, and building the workforce of the future with top-class graduate, apprentice and trainee programs.





2,800+

The number of Zinfra team members of which 80% are field based and 20% in the office.



190+

The number of apprentices & trainees currently in our program.



92%

The completion rate of participants in our Apprentice & Trainee program, an impressive figure compared to the 50% industry average.



38,000+

The number of training hours completed by apprentices and trainees annually.



107,900+

Technical training hours completed by the Zinfra team annually.



\$3.9M

Total investment in technical training annually.



21

The number of cultural heritage training sessions delivered in 2024.



67%

The number of team members who completed our Creating Respectful Workplaces training program in 2024 with training continuing in 2025.



6 Employee Networks

Allyra (LGBTQI+), Diversability (People with a Disability), Celebrations (Multiculturalism), Indigenous Employee Network, and two women's networks She Builds and She Elevates.



40%

The percentage of which we aim to increase participation of women in our organisation by 2030.



245+

The number of Quarter Century Club members who have given 25+ years of service

Diversity, Inclusion & Belonging



Our Diversity Inclusion and Belonging (DIB) Roadmap (2023-2025) guides our annual focus areas strengthening our business through greater diversity.

Watch our Zinfra Means videos where we asked our people, what working at Zinfra personally means to them.





Our Fleet



210+

Elevated work platforms



180+

Plant



115+

Heavy commercial vehicles



170+

Passenger vehicles



1,130+

Light commercial vehicles



360+

Trailers

Helping reduce our Fleet's Greenhouse Gas Emissions

In a step towards reducing our greenhouse gas emissions, Zinfra has begun to transition its vehicle fleet to electrical vehicles (EVs) and hybrid vehicles. All new passenger vehicles purchased in 2024 were hybrid and we rolled out our first hybrid ute in July 2024. The new EV fleet will result in cost savings due to lower fuel and maintenance expenses.

We have also introduced a new hybrid EWP design which uses both battery-electric and conventional engine-hydraulic functionality to operate, reducing vehicle idling which reduces fuel burn, lowering CO2 emissions and our operating costs. Four of these were rolled out in 2024.



View our new EWP that has been given a Nifty Lift.





Safety

Safety is our number one priority.

The safety of our people, our community and the environment is an embedded value in all that we do, with a “Safety First,” principle integrated into every aspect of our operations. Our commitment ensures that our clients, contractors, employees, and communities are protected, fostering a safe and sustainable workplace.

Our four SAFE Commitments

Our team is guided by a set of SAFE Commitments - four powerful statements that align all of us to the way we approach safety - now and into the future.

A Speak Up Culture

We're committed to building a workplace where people feel safe to speak up: to not only stop unsafe work from an operational perspective but also be comfortable and empowered in reporting and intervening in instances of discrimination, sexual harassment or bullying.

Leading in Safety

We acknowledge the profound influence leaders in the business have on shaping our safety culture. Reflecting this, a key focus in was delivering leadership safety training and support.

Quality and Assurance

We ensure our work is delivered safely, sustainably and meets regulatory requirements.

All our business management systems are certified. In addition to this, we are accredited under the Australian Government Building and Construction OHS Accreditation Scheme - OFSC Accreditation. This covers specific scopes of work related to major projects.

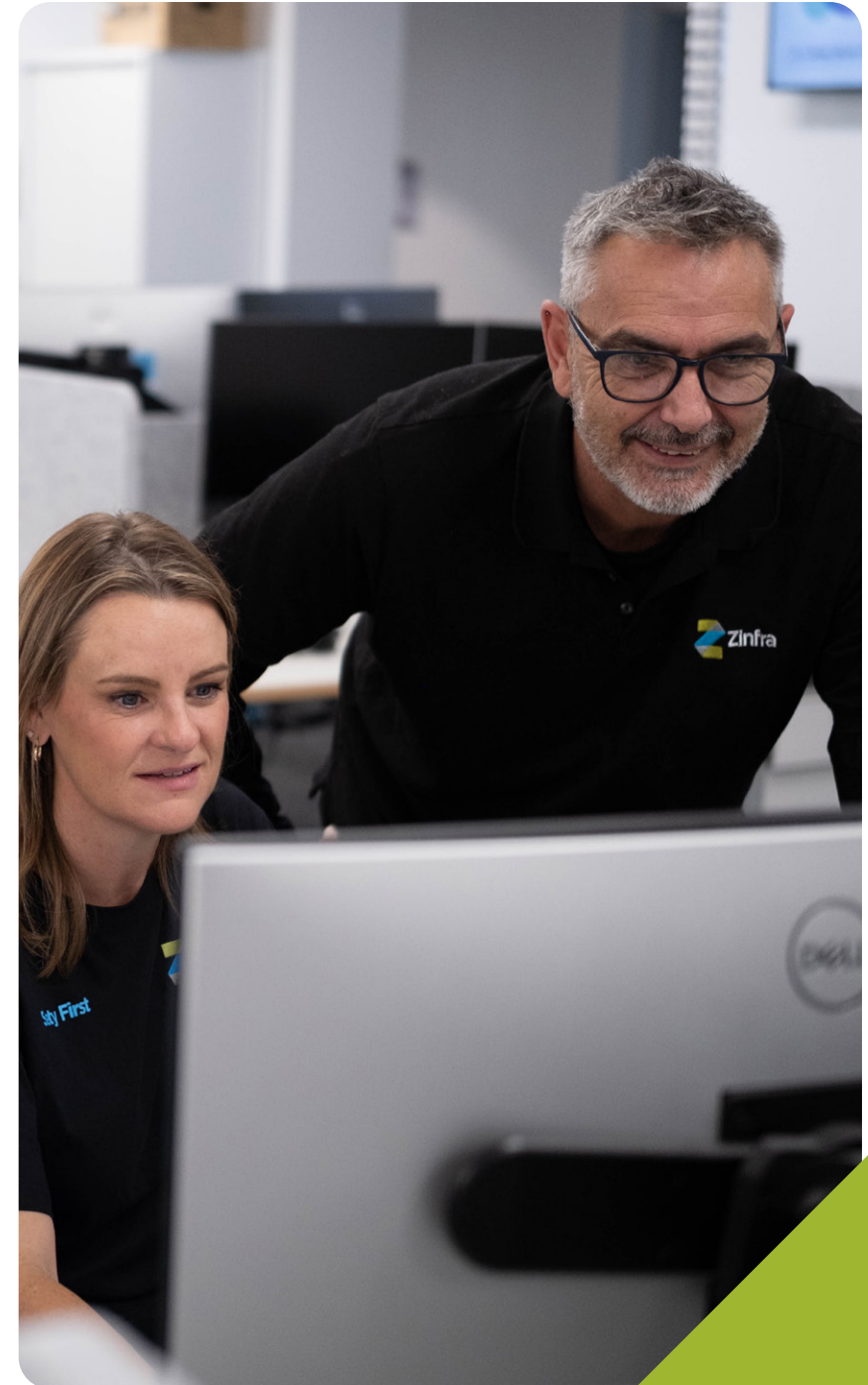
Our key quality management objective is to 'get it right the first time' by delivering services to meet our client's expectations, safely. We take pride in a job well done and always seek to implement a culture that fosters continuous improvement. This is achieved by encouraging our people to take ownership of work practices, pride in their work and responsibility for the results.

Testament to the effectiveness of our quality management system and dedication of our people is a demonstrated track record of outstanding results on some of the most complex and high-profile utility and infrastructure projects.

In addition to this, we are accredited under the Australian Government Building and Construction OHS Accreditation Scheme - OFSC Accreditation. This covers specific scopes of work related to major projects.



[QMS Certificate](#) | [EMS Certificate](#) | [Federal Safety Commissioner Certificate](#)



Global Expertise

We have ready access to world-leading research and innovation from the largest utility players in the world.

Zinfra is a wholly owned subsidiary of State Grid Singapore Power Australia Assets (SGSPAA) that comprises of Jemena, one of Australia's largest energy infrastructure companies and Zinfra, a projects, operations, maintenance and emergency response business. Our Group can trace its origins back to 1837 when town gas was used to light the streets of Sydney. Since that time, we have continued to play a key role in bringing energy to millions of Australian homes and businesses.

SGSPAA is owned by State Grid of China (60% ownership) and Singapore Power (40% ownership) through their international investment subsidiaries, State Grid International Development and Singapore Power International.

Through our shareholders we have access to international energy networks and supply chains in countries such as China, Brazil, Italy, the Philippines, Hong Kong, Greece, Chile, Vietnam, Thailand and Singapore providing us insights into world's best practice and supply pathways which allow us to optimise cost outcomes.

Our owner allows us to leverage more than a century of experience and expertise providing ready access to world leading research and innovation from the largest utility players in the world.



Our Procurement Practices

At Zinfra, we are committed to sustainable procurement, and we have a zero tolerance approach to modern slavery throughout our supply chain, consistent with our disclosure obligations under the *Australian Modern Slavery Act 2018 (Cth.)*.

2021

Our Group's inaugural Modern Slavery Action Plan launched as part of our commitment to improving practices and processes to identify and respond to risks of modern slavery to help drive improvements in global workforce practices. A Modern Slavery Report has since been published annually.

Late 2023

Our Group entered into an agreement with Fair Supply, who have provided us with reporting data to help identify potential areas of concern in our supply chains internationally while also suggesting ways through which we can mitigate and manage these risks.

In 2024

We used the Fair Supply tool to inform our work with suppliers to help them improve their understanding of modern slavery risks in their supply chains. We also focused on developing a stronger understanding of the risks in our Australian based suppliers supply chains internationally.



62 Billion

The Fair Supply tool provides our Group with visibility into 62 billion global supply chains combined with sustainability data to quickly assess, identify and report on risks across many Environmental, Social and Governance (ESG) domains including biodiversity, greenhouse gas emissions and modern slavery.



You can read our
2024 Modern Slavery
Statement here



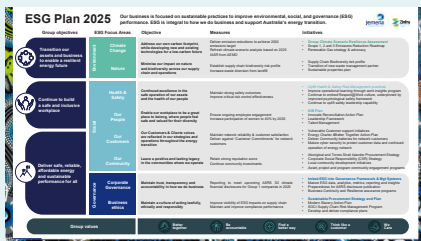
Environment and Sustainability



As a provider of energy infrastructure services and solutions, our business is focused on sustainable practices to improve environmental, social and governance (ESG) performance.

We are making sustainability an integral part of how we do business, including our support for Australia's transition to a low-carbon future.

In 2023, we became a member of the nationally recognised Infrastructure Sustainability Council (ISC). By adopting the ISC's criteria framework into our processes and procedures, our people can embed ESG criteria through the planning, design, build and operations phases of our projects and programs, to help achieve ESG objectives both for our business and that of our clients.



Our ESG Plan

We take a holistic approach to sustainability which focuses on all three elements that ensure sustainable outcomes: environmental, social and governance (ESG). We developed an overarching ESG Plan which identifies areas of focus while our Environmental and Sustainability Policy sets out our guiding principles.



Our Sustainability Reports

Since 2019 we have been outlining our activities and achievements for that year, including:

- the support we provided to the people and communities where we operate,
- how we're contributing to a low-carbon future and protecting our environment, and
- the safety and wellbeing of our people and our diversity and inclusion initiatives.



Climate Transition Plan 2025

As a leading provider of services to energy asset owners and operators, we've been thinking how we will have to change too. We developed our Climate Transition Plan 2025, which outlines our plan between now and 2030 to reduce emissions and contribute to the energy transition.



ISC Bronze Sustainability Rating

In 2023, we became a member of the nationally recognised Infrastructure Sustainability Council (ISC), adopting the ISC's criteria framework into our processes and procedures.

In 2024 we were awarded a bronze rating from the Infrastructure Sustainability Council (ISC) for our work constructing Jemena's Malabar Biomethane Injection Plant.

This is the first energy project in Australia and the first project in NSW that has been certified under the IS Essentials Pilot Rating Scheme and is an acknowledgement of Zinfra's capability to meet ISC sustainability criteria across the planning, design and construction of projects.

Our Communities

We know connections matter.

Connection to our industry, community, to country, to the towns and the cities we live and operate in and to the energy that supports people and businesses in all seasons matters.



Sponsorship of the Australian Inclusive Cricket Fund

We sponsored the Men's Australian Intellectually Disabled Cricket team to break down the financial barriers for talent athletes to attend the 2025 Darwin training camp and 2026 International Tours.



Nimmitabel Show

We proudly sponsored the Nimmitabel Show in 2025 to support the coming together of the communities in which we operate celebrating local culture, agricultural and community spirit.



Supporting our clients

We often get together with our client to support causes that are important to their business and customers. Our team working on the Waratah Super Battery got together with client Transgrid to turn recycled steel into a \$4,000 donation for Trek4Kidz. While our team working on the Tasmanian Gas Pipeline worked closely with client TGP and local volunteers to protect an endangered parrot population.



Annual Dollar Matching Fundraising

Each year, our Zinfra leadership team dollar matches donations made by team members to charities that matter to them including the Royal Flying Doctors Service of Australia, and the Cancer Council of Australia.

Our Industry

We're passionate about supporting the next generation of STEM professionals and playing an active role in shaping the future workforce of our industry.



[Read more](#)

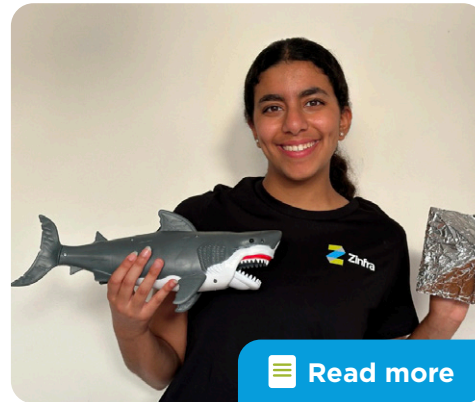
Engineers Australia 2025 Partnership

This collaboration is designed to overcome some challenges in our industry with a growing skills shortage at a time of transformation. As part of the partnership, Zinfra will work closely with Engineers Australia to promote career pathways, highlight our capabilities and promote further diversity across the engineering profession.



Annual University Awards

We sponsor annual awards recognising outstanding engineering students across the east coast of Australia through partnerships with The University of Sydney, Monash University and the University of Tasmania.



[Read more](#)

Australian Science and Engineering Fair (AUSSEF)

AUSSEF brings together some of Australia's brightest young minds to showcase their STEM innovations. In 2025, we sponsored, 16-year-old, Lily Rofail who placed fourth in the International Science and Engineering Fair (ISEF) in Ohio in May 2025.



Empowered Women in Trades (EWIT)

Zinfra was proud to sponsor Empowered Women in Trades (EWIT) 2025 gala awards in line with our commitment to building a more inclusive and diverse workforce. The EWIT are champions of tradeswomen, diversity and gender equality with a mission to empower women and non-binary people in skilled trades, and fostering a culture of inclusivity.

Our Reconciliation Action Plan

We started our journey towards reconciliation through the launch of our Reflect Reconciliation Action Plan in 2020, this resource became a key platform to help us gain a better understanding of Aboriginal and Torres Strait Islander Peoples, cultures, and histories.

2020

In 2024 we launched our Innovate RAP, this builds on our progress and will see us embed cultural awareness and understanding, develop more opportunities for indigenous employees, and engagement of Traditional Owners on our projects.

2024

Reconciliation activities include:

Cultural Heritage Training

Training that supports more than 400 field based team members be able to recognise and protect First Nations cultural icons and artwork during day-to-day operations.

Indigenous Supply Networks

Contributing more than \$7 million to First Nations businesses through procuring their goods and services through our relationship with Fair Supply.

Foundation 2Future

Supporting Foundation 2 Future, a new initiative supporting First Nations people into work in the Northern Territory. Since its launch in August 2024, more than 100 participants have undertaken the pre-employment courses and has supported 34 people into employment.

Tennant Creek Women's Refuge

Annual donation to the Tennant Creek Women's Refuge, a critical service within the local and broader Barkly region delivering counselling, community outreach, advocacy, support and 24/7 crisis accommodation to women and children at risk or affected by violence. Hear Amy Bamford from our Zinfra Gas Services team talk to the clothing and toy drive for the refuge: Meet Amy: Tennant Creek Women's Refuge.

NRW and NAIDOC events

Running annual events featuring the experiences of First Nations people during National Reconciliation Week and NAIDOC week including performances, meals, paintings and dance performances.







Your trusted partner in energy





**We welcome the
opportunity to discuss
how we can become
your trusted partner
in energy.**



Last updated October 27, 2025

Melbourne

L16 567 Collins Street
Melbourne VIC 3000

Sydney

L14 99 Walker Street
North Sydney NSW 2060

Brisbane

Unit 1F 22 Ellison Road
Geebung QLD 4034

Hobart

90 Kennedy Drive
Cambridge TAS 7170

zinfra.com.au