



Photo by Vijay Barve. CC BY 4.0



GBIF community of practice in Asia

Chihjen Ko, Lily Shrestha, Melissa Liu and Vijay Barve

PRESENTATION OUTLINE



01
BIFA Support
BIFA Impact Review



02
Support to Nodes
Helpdesk
GRSciColl



03
Asia Office Hours



04
Regional Data Mobilization Workshops



05
Building Communities in Asia



06
Support and Opportunities for Further Engagement

BIFA PROJECT SUPPORT

BIFA: Biodiversity Information Fund for Asia

[ABOUT](#)
[NEWS](#)
[EVENTS](#)
[PROJECTS](#)



- Technical and other support as required
- Followup for progress
- Timely reminder for deliverables

Project	Country/area of project lead
Sharing vertebrate occurrence data from camera traps in Asia	Nepal
Tending to the neglected diversity of beetles and Darwin wasps in Southwest China's "Lost World"	China
Seeing TIGER for the bees: digitizing apian specimens from Thailand's national parks	Thailand
Improving knowledge of Asian pteridophytes through DNA sampling of specimens in regional collections	Taiwan
Digitization and mobilization of specimen data from Indonesia's Herbarium Bogoriense	Indonesia
Filling data gaps with the natural history collections of the Western Ghats	India
DNA barcoding and taxonomic classification of black flies in Southeast Asia	Malaysia
Sharing eDNA data on sharks to advance conservation	Indonesia
Bats and associated ectoparasites and pathogens from the UPLB Museum of Natural History	Philippines
Small animals, big data: Mobilizing citizen science for data on the spiders of Asia	India
Using microbial metabarcoding to monitor biodiversity and bioindicators in the Mekong River	Thailand
Mobilizing data on ecologically important insects in Malaysia and Singapore	Singapore
A bilingual open-source checklist and digitization of Taiwan's bee fauna	Taiwan

• 13 projects

• 10 Asian countries

• Taxonomic coverage: Plants, Bees, Vertebrates, Bats, Insects, Beetles, Sharks

BIFA SURVEY

Past and present BIFA projects

- Survey form
- Follow-up interviews

BIFA Impact Review

- Biodiversity data mobilization activities
- Capacity development
- Use cases of GBIF-mediated data for decision making
- Follow-up grant, projects or collaborations
- Further collaboration
- Opportunities to strengthen GBIF participation

SUPPORT TO NODES

Technical assistance

- ❓ Become a publisher
- ❓ Data cleaning and validation
- ❓ Data publishing/IPT

Participant ▾	Membership	Member since
ASEAN Centre for Biodiversity	Other associate participant	2009
Cambodia	Associate country participant	2020
Chinese Academy of Sciences	Other associate participant	2013
Chinese Taipei	Other associate participant	2001
East Asia Biodiversity Conservation Network	Other associate participant	2020
International Centre for Integrated Mountain Development	Other associate participant	2009
Korea, Republic of	Voting participant	2001
Viet Nam	Associate country participant	2018
World Federation for Culture Collections	Other associate participant	2002

HELPDESK



BIFA teams

Nodes

GBIF publishers

Potential/New publisher

Data holding Institutions

Researchers

Data users

GRSCICOLL

GBIF Registry

- Organizations
- Datasets
- Networks
- Installations
- GRSciColl collections
- GRSciColl institutions**
- Nodes
- Vocabularies
- Suggested changes
- Monitoring

Institutions / Search
Search institutions [Create new](#)

Search Code Name

Fuzzy name City Thailand

[Search](#)

84 results page 1/4

Name	Code	City	Country	Active	Created	Created by	Modified
SuanLuang Rama IX Royal Botanic Garden	SLR		Thailand	Yes	Wed 06 Jul 2022 10:39:54	ih-sync	Wed 06 Jul 2022 10:39:54
Thai Traditional Medicine Research Institute	TTM	Klongmahanak, Pomprabsatturpai	Thailand	Yes	Tue 31 Mar 2020 12:53:01	ih-sync	Wed 27 May 2020 11:27:21



Collections / Search
Search collections

Search Code

City

[Search](#)

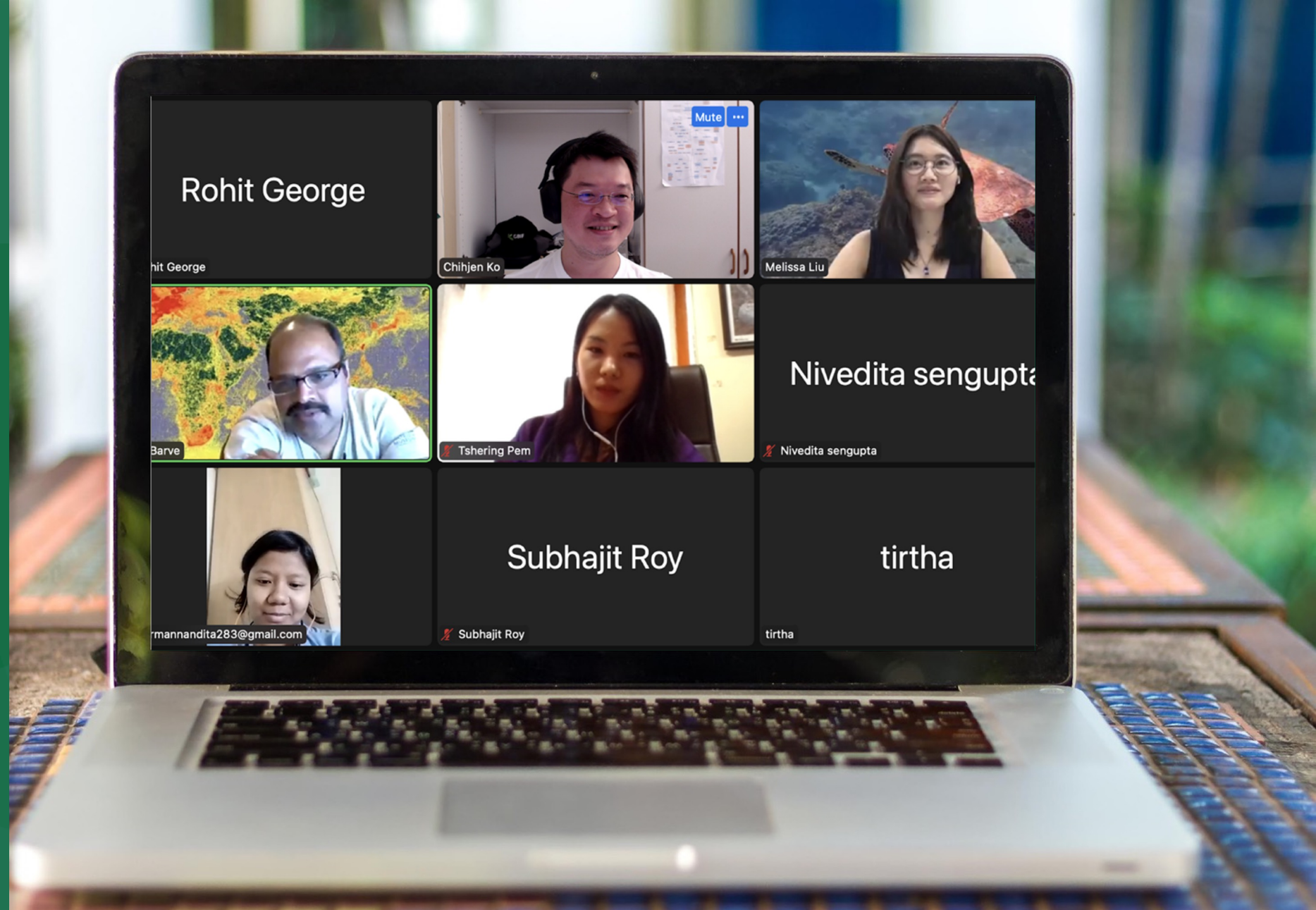
6,837 results

Name	Code	Institution
Colección Biológica del Caribe	CBC	Universidad Simón Bolívar
Collection of amber and other fossil resins	RESINS	Museum of the Earth, Polish Academy of Sciences
Collections of fossil fauna (paleozoological)	PALEOZOOLOGICAL	Museum of the Earth, Polish Academy of Sciences
Collections of fossil flora (paleobotanical)	PALEOBOTANICAL	Museum of the Earth, Polish Academy of Sciences

- Global registry of scientific collections
- List of institutions and their collections
- Refine and update the information, add institutions and collections
- Encourage data mobilization through follow-up

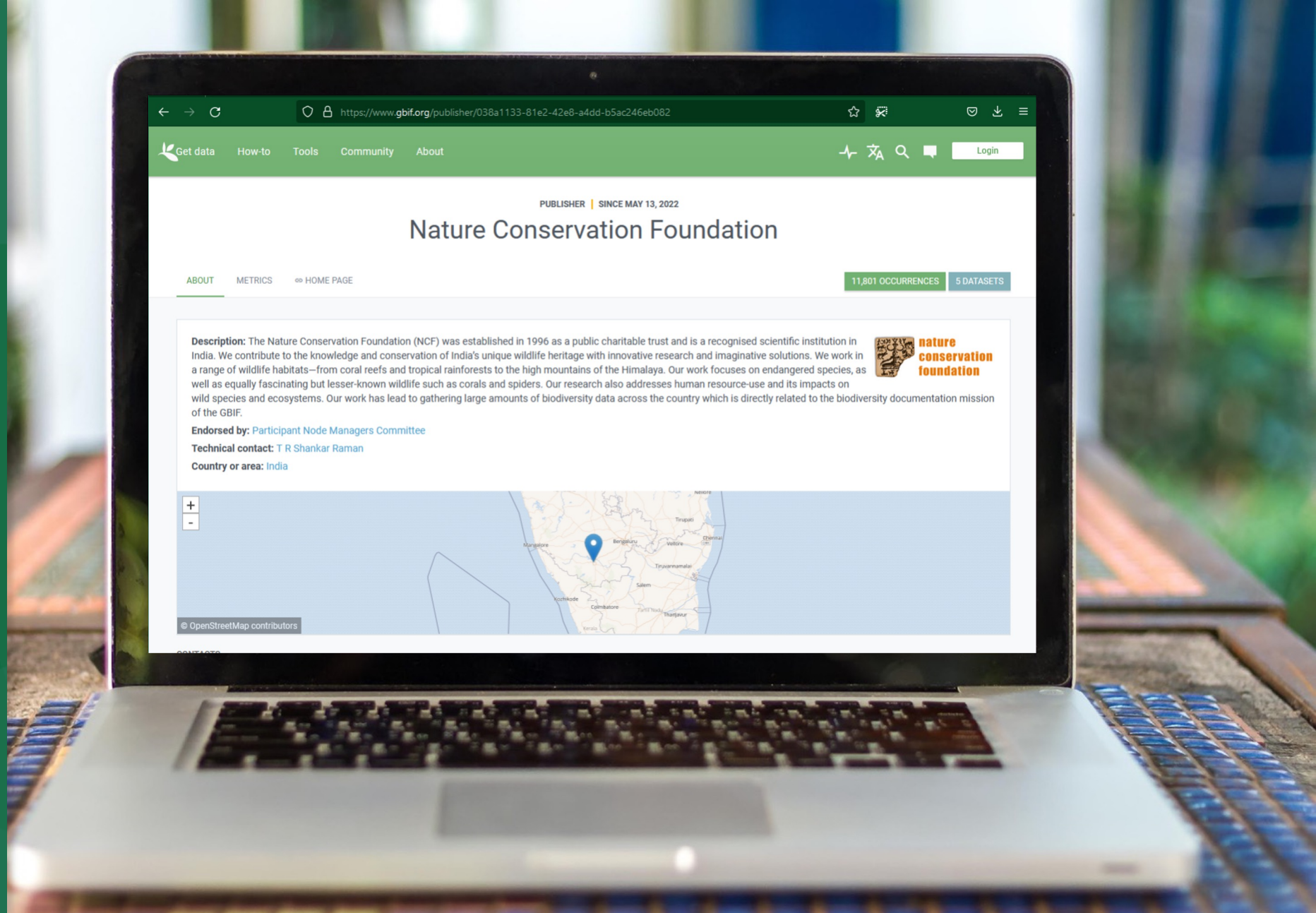
ASIA OFFICE HOURS

- Weekly open zoom session
- Data Mobilization
- Data Use
- Discussion on GBIF Forum
- Community bonding



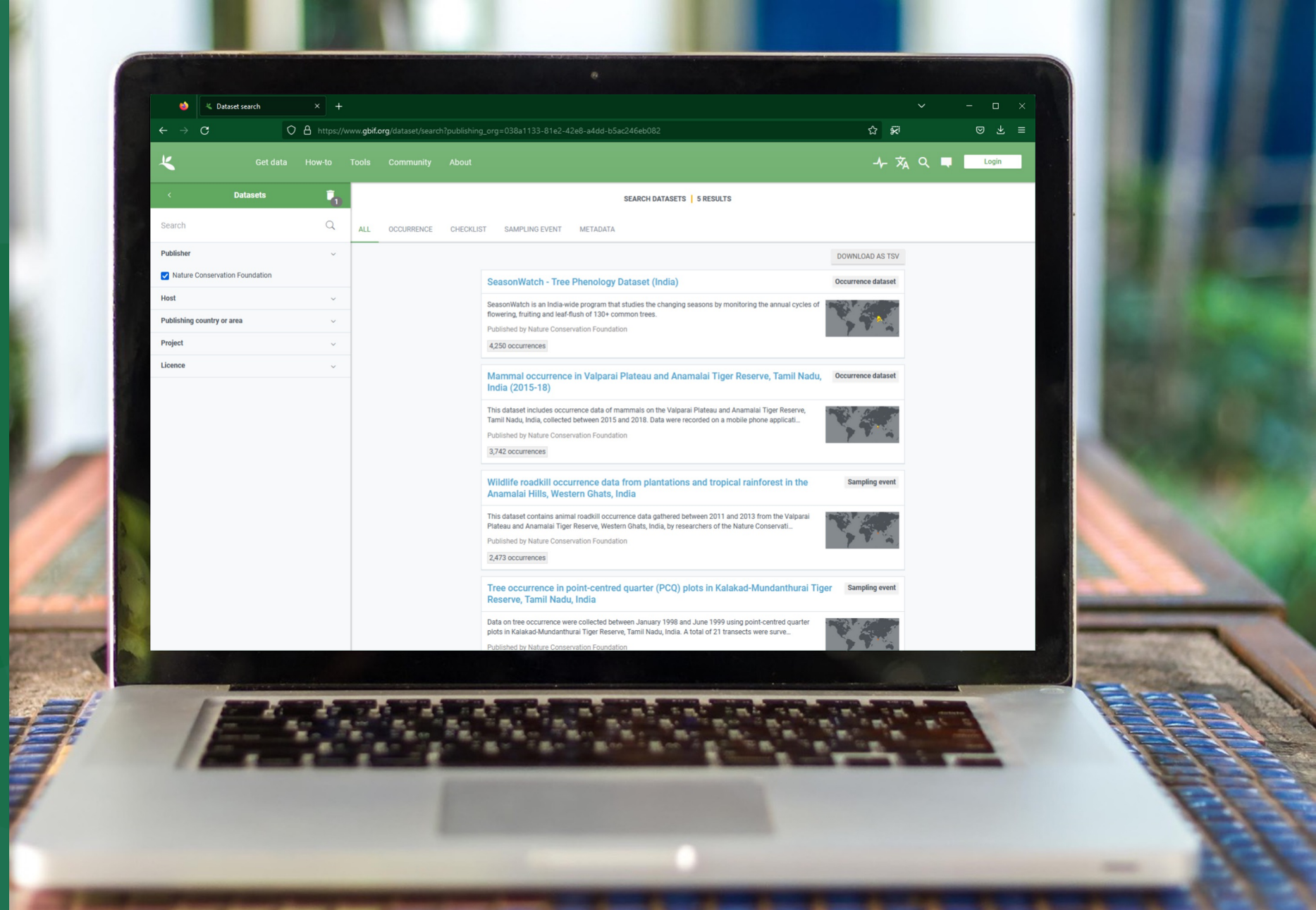
NCF

New Data Publisher



NCF

Already published 5
datasets totaling
~12000 records



QUESTIONS

”

Have several locations to be georeferenced. What is the best way?

”

How to publish the collection dataset with DNA related data?

”

How to reformat the event dates?

”

I always wanted to learn R to improve my data manipulation skills of manage Biodiversity data. DataCamp is providing me this opportunity.

Nandita Barman

”

I have been an Excel user but to automate some of my biodiversity data processing I need to learn Python scripting.

Siddharth Kulkarni

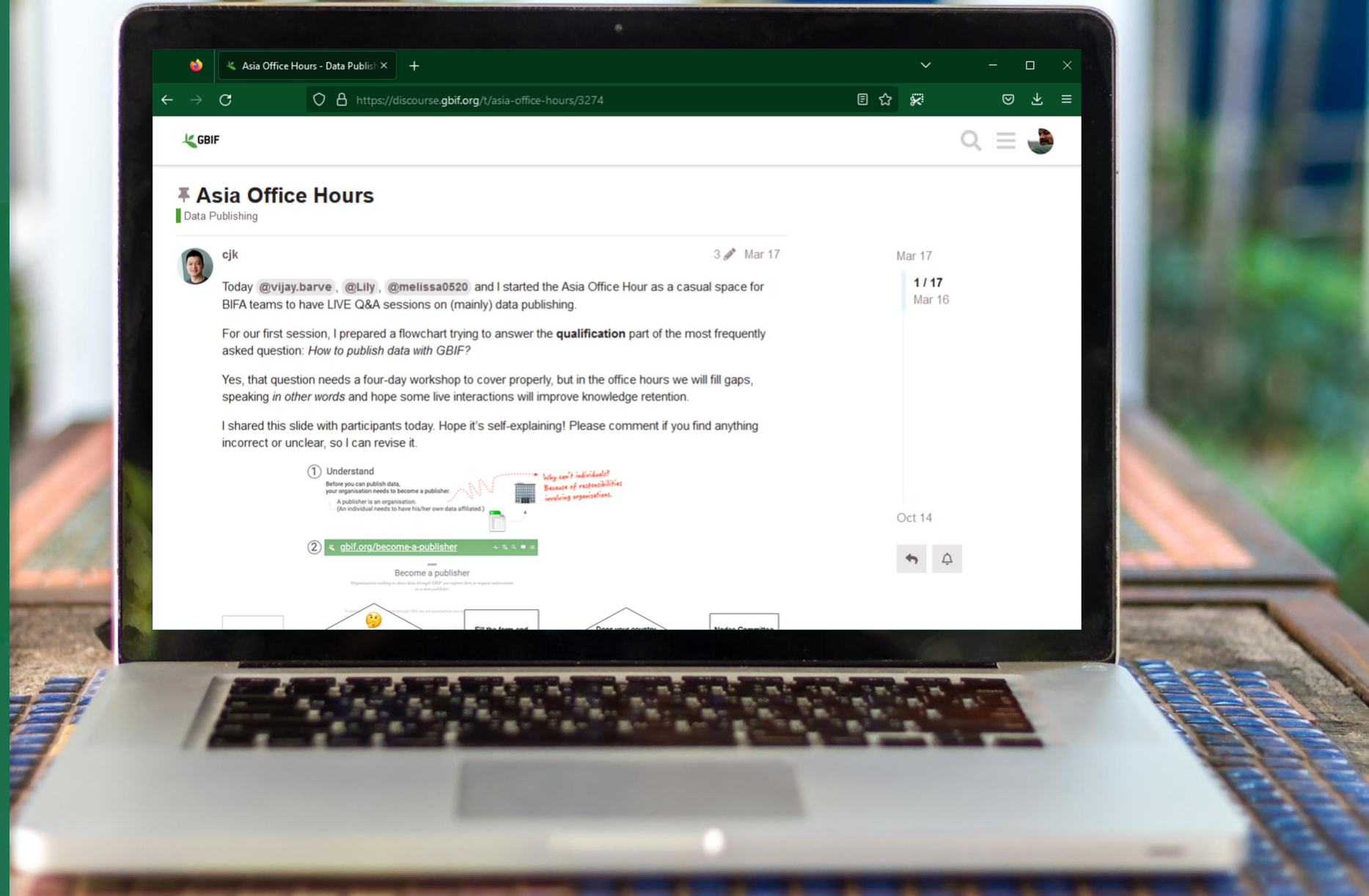
”

As a coder, my recent explorations with biodiversity data I need some revised skillsets.

Manoj K.

ASIA OFFICE HOURS

GBIF Discourse forum



REGIONAL DATA MOBILIZATION WORKSHOPS

Capacity Building for GBIF Asia

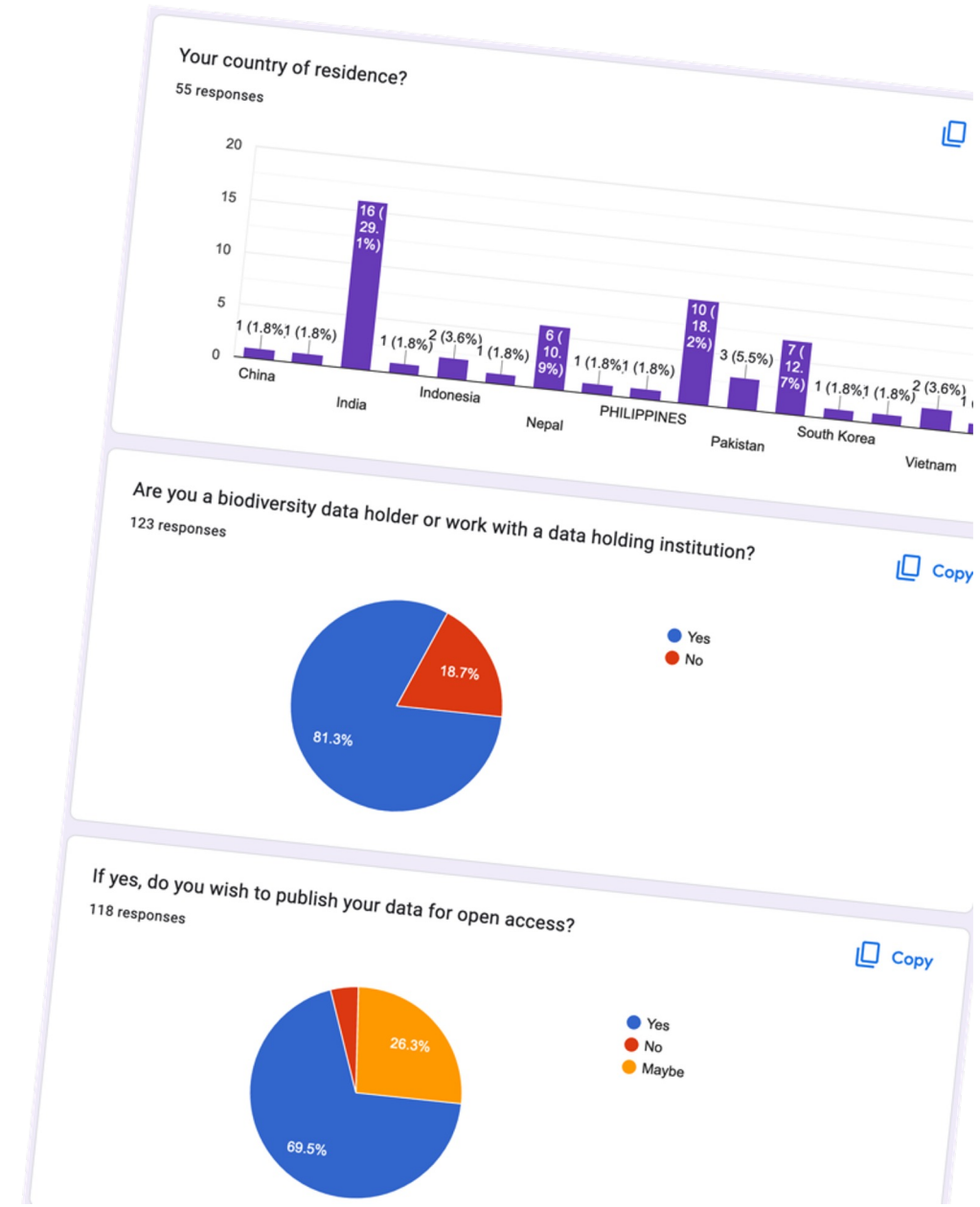
- Benefits of badges
 - Understandings of skill levels
 - Better quality of support
- Demand of badges
 - Does GBIF hold any training this year?
 - How do we receive formal training in data mobilization?



REGIONAL DATA MOBILIZATION WORKSHOPS

Capacity Building for GBIF Asia

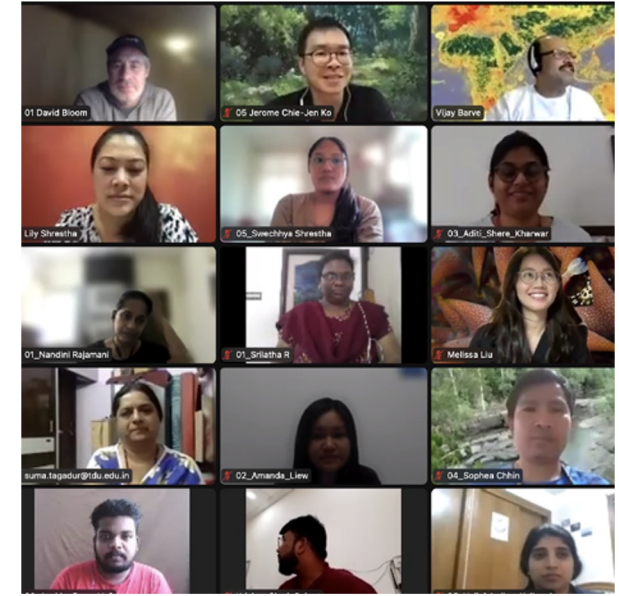
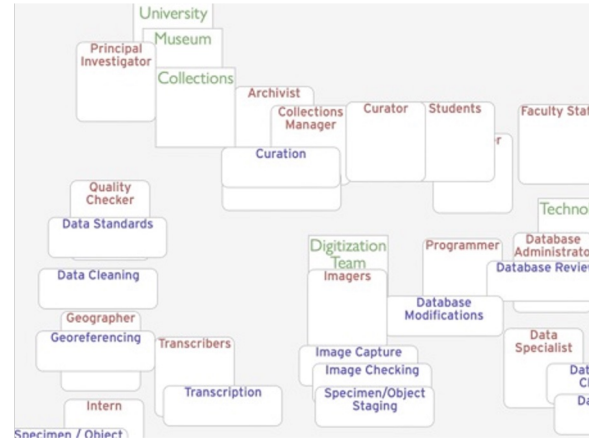
- Interest survey
- Formulation of the idea
 - Which formats? How many days?
- Selection process:
 - Whether the applicant:
 1. Has datasets to publish soon
 2. Has participated in previous workshops
 3. Has someone else with a badge in the same organisation
 4. Is up for a self-paced format



REGIONAL DATA MOBILIZATION WORKSHOPS

Capacity Building for GBIF Asia

- The virtual workshop
 - Abide to the previous BIFA training format
 - Stand on the success of GBIF training programme
 - Immense support from trainers and mentors
- Incentives
 - Data publishing to GBIF.org *within a week*
 - Mail-in GBIF *goodies*



REGIONAL DATA MOBILIZATION WORKSHOPS

Capacity Building for GBIF Asia

- The virtual workshop
 - Abide to the previous BIFA training format
 - Stand on the success of GBIF training programme
 - Immense support from trainers and mentors
- Incentives
 - Data publishing to GBIF.org *within a week*
 - Mail-in GBIF *goodies*
 - 7 datasets published
- Grading in progress
 - 16 assignments received



REGIONAL DATA MOBILIZATION WORKSHOPS

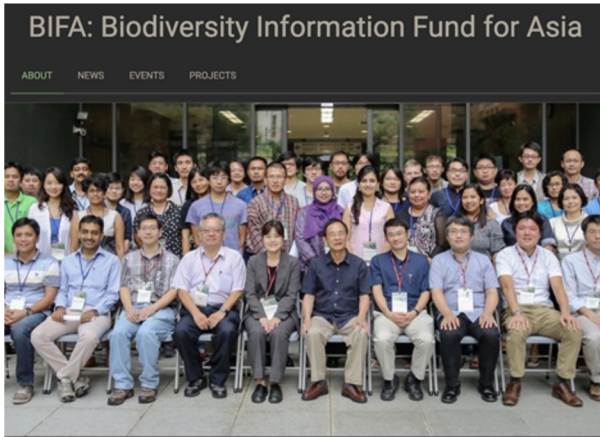
Capacity Building for GBIF Asia

- Experimenting a format for self-paced learning
 - All by the applicant him/herself
 - Kept the planning session
 - 5 weeks
 - Paired with Asia Office Hours

2022 Self-Paced Data Mobilization Training for Asia
17 October - 2 December, Asia

Date/Time	Monday	Tuesday	Wednesday	Thursday (Asia Office Hours)	Friday
Week 1	Oct 17	Oct 18	Oct 19	Oct 20	Oct 21
	Introduction to GBIF / Foundations		Oct 26	Oct 27	Oct 28
Week 2	Oct 24	Oct 25			
	Planning		Zoom Session option 2		
	Zoom Session option 1				
	12:00 Tokyo/Seoul 11:00 Manila/Taipei (GMT+8) 10:00 Bangkok (GMT+7) 08:45 Nepal (GMT+5:45) 08:30 Mumbai (GMT+5:30) 08:00 Islamabad (GMT+5:00)				
		Nov 1	Nov 2	Nov 3	Nov 4
Week 3	Oct 31	Nov 8	Nov 9	Nov 10	Nov 11
	Data Capture				
	Nov 7	Nov 8	Nov 9	Nov 10	Nov 11
	Data Management				
		Nov 15	Nov 16	Nov 17	Nov 18

BUILDING COMMUNITY IN ASIA



Project & technical support

- Nodes & BIFA project
- Hosted portals
- Helpdesk of data publishers & users



Asia office hours

- One-hour virtual QA session on every Thursday
- Discussion on GBIF forum



Data mobilization workshop

- Virtual sessions
- Self-paced learning
- Data publishing contest



GRSciColl

- Integrate information of entries of scientific collections in Asia
- Contact & Update with institutions

DATA USE CLUB

- Training seminars
- Practical sessions
- DataCamp online training

Data Use Club

Sharing, showcasing and supporting data use across the GBIF network

Apply for a license!



FEEDBACKS FROM PARTICIPANTS

”

DataCamp is self-learning friendly to beginners; different seminars on practical topics by GBIF are also very useful.

Turtle Spot Taiwan

”

The SQL course helps me learn systematically that I now know a varieties of syntaxes and functions; they make my job much easier.

Jin-Ying Lee, TaiBIF

Data use club

15 licenses



METRICS IN 2022

Need training in data mobilization?



126 said YES

Workshop
Participants

30

Self-Paced
Participants

24

New Datasets

12 ~20K records



TDWG Asia Session

3 talks



New Publishers

8



i

Participants in Asia Office Hours

3-5 weekly visitors



**SUPPORT AND
OPPORTUNITIES FOR
FURTHER
ENGAGEMENT**

? Outreach to related communities

- ? eDNA
- ? Vector-borne disease
- ? GRSciColl
- ? Related conferences (e.g. TDWG-SPNCH)

? Data use club

HOW TO GET INVOLVED

01

Data Mobilization

- Contact us by email
- Asia office hour
- GBIF discourse forum

02

Capacity Enhancement

- Fill in workshop interest form
- Data mobilization workshop
- Self-paced learning

03

GRSciColl

- Anyone can propose changes
- Align with your institution



Photo by Melissa Liu. CC BY-NC 4.0

REACHING OUT



Email Us

asia_support@gbif.org



Subscribe to

GBIF Asia Mailing List

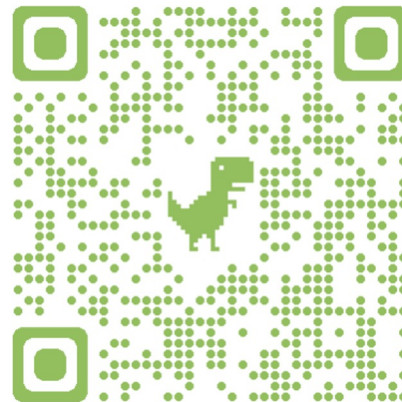
<https://bit.ly/gbif-asia-mailing>



Zoom in

Asia Office hours

<https://bit.ly/asia-office-hours>



Discuss in

GBIF Discourse Forum

<https://bit.ly/aoh-discuss>



Thank you

Chihjen Ko, Lily Shrestha, Melissa Liu, Vijay Barve
asia_support@gbif.org



Photo by Melissa Liu. CC BY-NC 4.0