

BID Workshops

Photos: Maheva Bagard Laursen & Melanie Raymond

CAPACITY ENHANCEMENT

What are the key capacity needs and how do we address them with capacity arrangements?

What are the challenges in taking action in GBIF?

Aware of any initiatives regional/international that could be ongoing activities initiated during the EIC?

What are the key capacity needs and how do we address them with capacity arrangements?	What are the challenges in taking action in GBIF?
Aware of any initiatives regional/international that could be ongoing activities initiated during the EIC?	Aware of any initiatives regional/international that could be ongoing activities initiated during the EIC?





#NANAIGOUNT2017

Nature's
Marepa

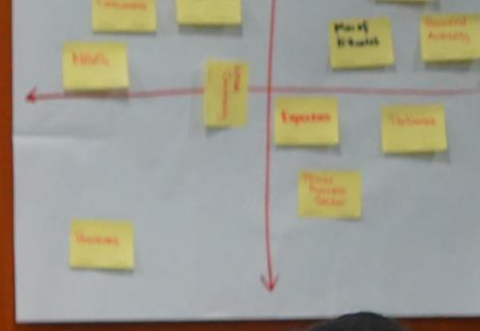
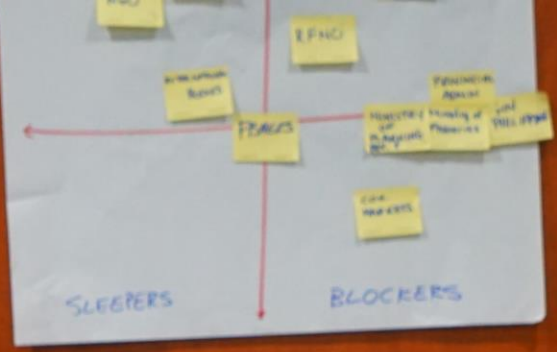
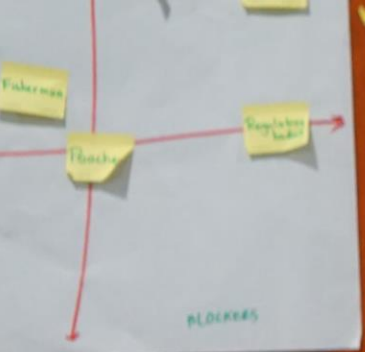














GBIF BID
Charita Huggins
[Title]

GBIF BID
Allen Adams
[Title]

GBIF BID
Part B: Leading environmental GBIF in Belize
Part C: Promoting and producing GBIF data
[Additional text and graphics]

VARIATA
[Logo]















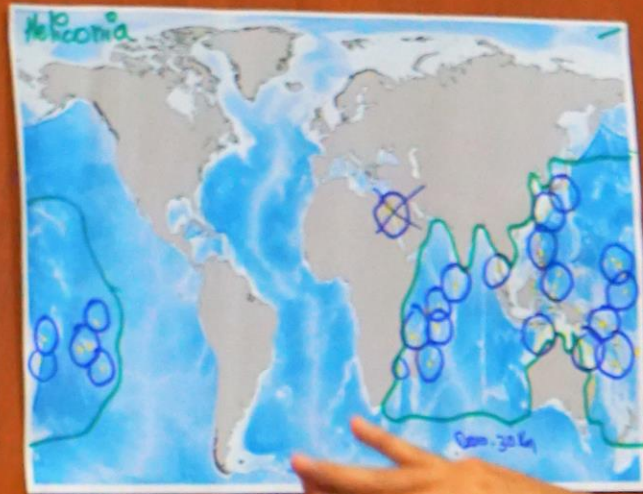
Task













Marie Perle
Faculty of Social, University
Cameroon
BG

Koffi Jean
Agribusiness University
Cote d'Ivoire
BG

Jean-Claude
GEP
University of Africa
BG



MEETING
ARCOS

BIO
Alan-Jaures Gbetoho
Béni

GBIF





 GBIF
Rigobert Ntep
Ministry of environment,
conservation of nature and

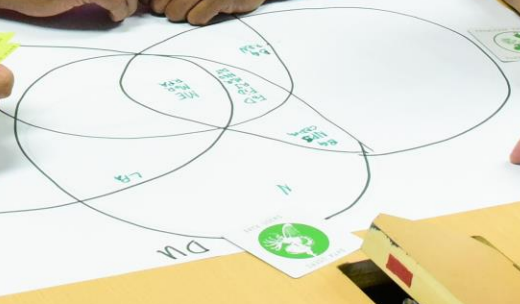






BID Pacific

HAWAIIAN MOVING
FOR THE ENVIRONMENT



ONE Gruppe



RÔLE
ROLE
ROL



STAKEHOLDERS
CONTRACTOR
STAKE

CONTRACTOR
STAKE

CONTRACTOR
STAKE

CONTRACTOR
STAKE

CONTRACTOR
STAKE

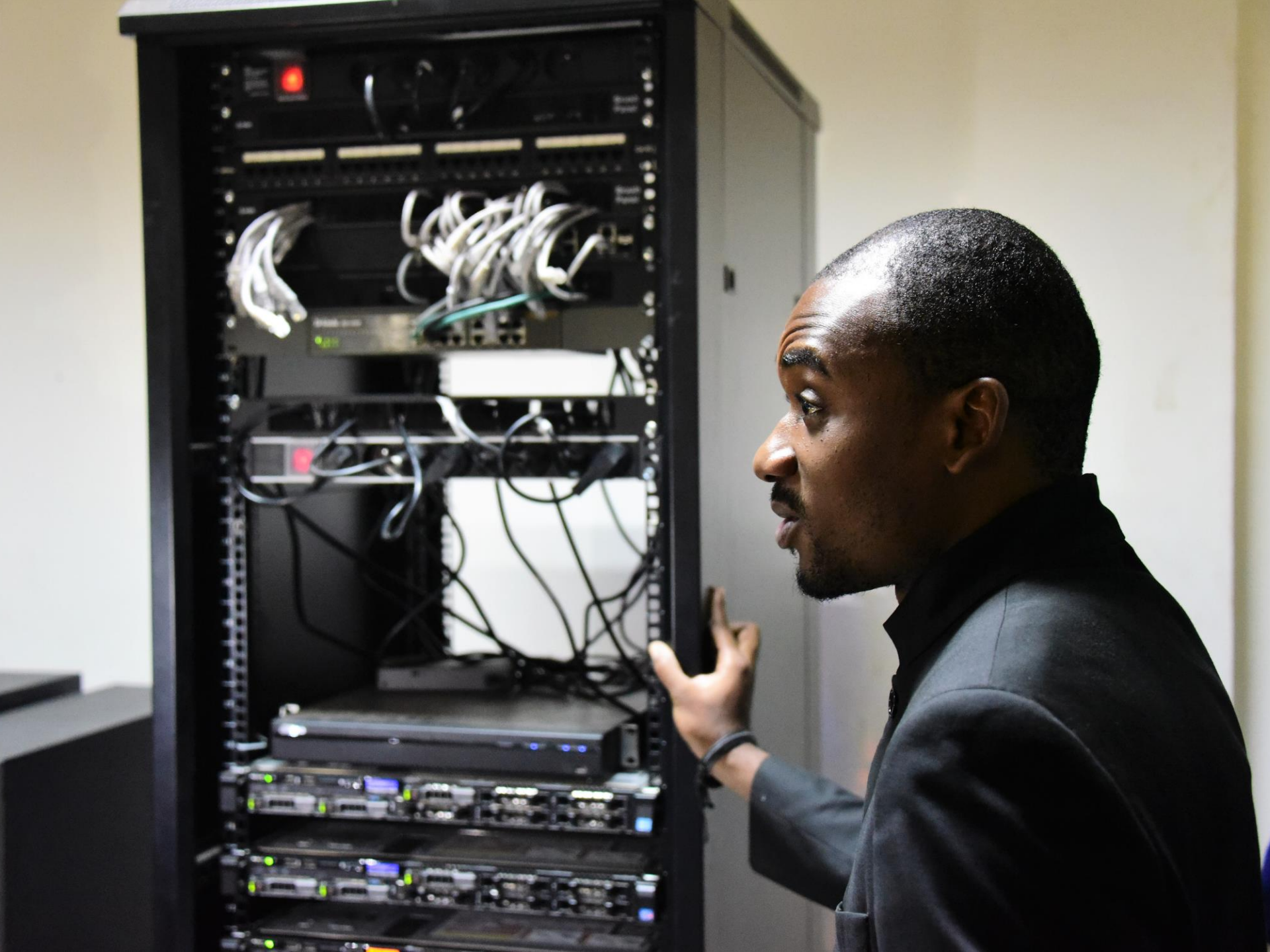
CONTRACTOR
STAKE

CONTRACTOR
STAKE

STAKE





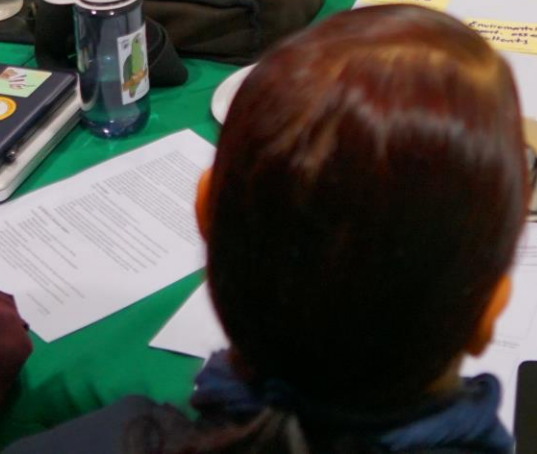








Fam. Palaem...











U.S.P. REFERENCE COLLECTION
 Sargassacea GROUP 3 CAT. NO. 2143
 FIJI: Beqa, Yavusa Passage,
 depth 50' to coral cliff water
 bottom
 IDENT: NO. SPEC: 3
 COLL: H. Ganel 10 March 1972



U.S.P. REFERENCE COLLECTION
 Alcyonacea GROUP 4 CAT. NO. 2154
 FIJI: Toberua Passage, Viti Levu,
 at bottom of vertical coral cliff,
 40'
 IDENT: NO. SPEC: 1
 COLL: H. Ganel 12 March 1972



U.S.P. REFERENCE COLLECTION
 Alcyonacea GROUP 4
 FIJI: Nakuluva
 IDENT: NO. SPEC: 1
 COLL: R. Dyke

Project impact and outcomes

Published data will become valuable in the process of getting the Nagoya Protocol ratified (Source: Donovan Bogor, NIMOS, Personal Communication, November 2018)



Surname

London
since: 1996-04-11
By: Ratification
Nagoya Protocol
2010-10-25
Access and







