

English

# **ISHIKAWA** **road trips**

*Guide to Car Rental Journey*

NOTO AREA

KAGA AREA

HAKUSAN AREA

KANAZAWA AREA

[www.ishikawa-roadtrips.jp](http://www.ishikawa-roadtrips.jp)



# ISHIKAWA road trips

Guide to Car Rental Journey



## An Ishikawa trip with a rental car

While the majority of overseas tourists in Japan visit Tokyo with its soaring skyscrapers and Kyoto, which boasts a wealth of temples, Ishikawa is highly recommended for you to visit and experience the untouched side of Japan. Located between the Sea of Japan and Mt. Hakusan, Ishikawa offers travelers beautiful scenery created by rustic fishing and farming villages, historic temples and shrines, hot springs in the mountains, and rich nature. Taking a rental car trip will not only allow you to go to sightseeing spots that tour groups do not normally visit, but it will also give you ample freedom to travel. Let's take hold of the steering wheel and feel free to explore the charm of Ishikawa.



## CONTENTS

Introduction		02
About Ishikawa Prefecture		04
Noto Area	Itinerary	06
	Scenic Wonders	08
	Tourist Facilities	12
	Activities	16
	Local Specialities	18
	Toyama	20
Kaga Area	Itinerary	22
	Scenic Wonders	24
	Tourist Facilities	26
	Activities	28
	Local Specialities	30
	Fukui	32
Hakusan Area	Itinerary	34
	Scenic Wonders	36
	Tourist Facilities	38
	Activities	40
	Local Specialities	42
Gifu / Nagano		44
Kanazawa Area		46
Event Schedule		50
Map of Ishikawa		53
Access / Information Guide		59



### Michino-eki 道の駅

Michino-eki (lit. roadside station) is a public facility set up along the main roads all over the country, offering travel information, rest, food, drink, Wi-Fi connection, and on-the-spot sales of local products.

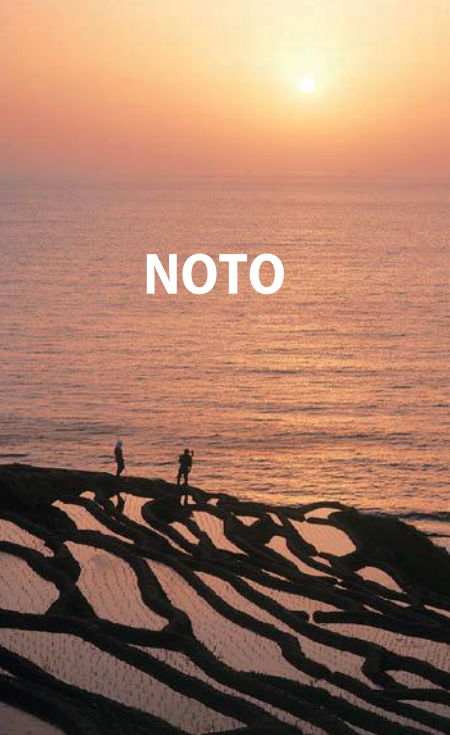


### What is MAPCODE?

When you drive around sites with no telephone numbers, use MAPCODE to identify the location. We've made a list of MAPCODEs that will be of great help of your road trip. Enter the MAPCODE (9 digit number) of your destination into the GPS navigation, and it will show you the way.

\*"マップコード" and "MAPCODE" are registered trademarks of DENSO Corporation.





**NOTO**



**KAGA**



**HAKUSAN**



**KANAZAWA**

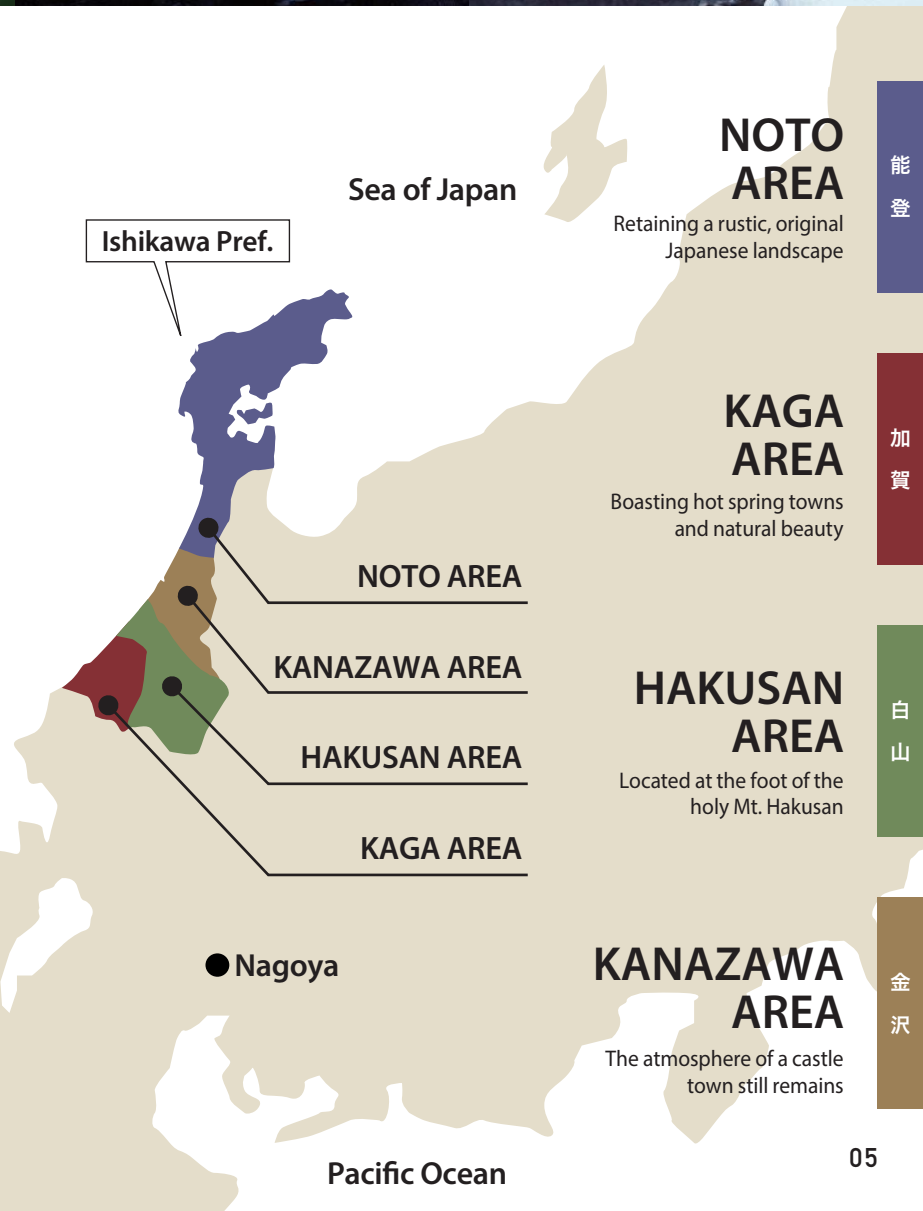
*Beautiful Ishikawa in beautiful Japan*

## Plan your trip to visit four areas in Ishikawa

Ishikawa Prefecture, located right in the middle of Honshu, Japan, has well-diversified tourism assets, with its own historical culture and abundant nature.

Ishikawa Prefecture comprises four districts: Noto, centered on the peninsula protruding into the Sea of Japan; Kaga, which boasts hot spring towns and abundant nature; Hakusan, located at the foot of Mt. Hakusan, one of the three holy mountains in Japan; and Kanazawa, which is the central city of Ishikawa Prefecture. Each area contains a variety of sightseeing spots, including scenery to enjoy while driving or scenic spots accessible only by car. Find the places you wish to visit and plan your own journey. An unexpected view from the car window may become the highlight of your drive.

Kanazawa station, a stop for the Hokuriku Shinkansen, would make a convenient starting point for your drive. An efficient round tour is possible by using the two airports at Noto and Komatsu.



**NOTO AREA**

Retaining a rustic, original Japanese landscape

**KAGA AREA**

Boasting hot spring towns and natural beauty

**HAKUSAN AREA**

Located at the foot of the holy Mt. Hakusan

**KANAZAWA AREA**

The atmosphere of a castle town still remains

能登

加賀

白山

金沢





# NOTO AREA

Retaining a rustic, original Japanese landscape

## Head to the tip of the peninsula on a drive through the original Japanese landscape

People living in the Noto Peninsula, surrounded by the Sea of Japan, have been deeply involved with the sea and made a living mainly through fishing and agriculture. This place where humans and nature coexist was selected as Japan's first "Globally Important Agricultural Heritage System" (GIAHS). Noto also offers a great driving route where you can enjoy the refreshing sea breeze and varied scenery. Departing from Kanazawa, visit the small Notojima island on the east side of the peninsula and stay at Wakura Onsen. The next day, go to Rokkozaki on the tip of the peninsula for views across the calm sea and stay at the port town of Wajima. Why not go on a 3-day, 2-night drive, where you will encounter the culture, tastes, and scenery of Noto while heading back home?

### ITINERARY

#### 1st day

- 1 Kanazawa  
↓  
Noto Satoyama kaido Freeway  
39 min / 37km
- 2 Chirihama Beach Driveway  
↓  
Route 232  
2 min / 2km [Mapcode: 135 000 459\*52]
- 3 Michino-eki Noto Chirihama  
↓  
Route 249  
8 min / 5.5km [Mapcode: 135 152 856]
- 4 Keta Taisha Shrine  
↓  
Route 46  
10 min / 4.4km [Mapcode: 135 302 673\*30]
- 5 Myoji Temple  
↓  
Route 46 - Route 298  
37 min / 25km [Mapcode: 135 423 164\*06]
- 6 Michino-eki Noto Shokusai Ichiba  
↓  
Route 47  
26 min / 17km [Mapcode: 135 776 469]
- 7 Notojima Glass Art Museum  
↓  
Route 257  
5 min / 3km [Mapcode: 590 494 148\*03]
- 8 Notojima Aquarium  
↓  
Route 257 - Route 47  
22 min / 14.6km [Mapcode: 590 523 457\*33]
- 9 Wakura Onsen  
(Stay Overnight)

#### 2nd day

- 9 Wakura Onsen  
↓  
Route 57 - Noto Satoyama kaido Freeway -  
Route 303 - Route 284  
1 h 23 min / 72km [Mapcode: 590 305 250\*77]
- 10 Tsukumowan bay  
↓  
Route 35 - Route 249  
25 min / 15.3km [Mapcode: 329 222 059\*08]
- 11 Mitsukejima Island  
↓  
Route 52 - Route 28  
34 min / 23.9km [Mapcode: 329 525 151\*82]
- 12 Rokkozaki (The Tip of the Peninsula)  
↓  
Route 28 - Route 249  
32 min / 22.9km [Mapcode: 913 114 044\*82]
- 13 Okunoto Salt Farm Village  
↓  
Route 249  
18 min / 13.6km [Mapcode: 552 869 001\*52]
- 14 Senmaida Rice Fields  
↓  
Route 249  
19 min / 11.4km [Mapcode: 552 615 639\*52]
- 15 Wajima  
(Stay Overnight)

#### 3rd day

- 16 Wajima Morning Market  
↓  
3 min / 650m [Mapcode: 283 828 226\*25]
- 17 Kiriko Lantern Museum  
↓  
Route 249  
4 min / 1km [Mapcode: 283 829 248\*00]
- 18 Wajima Lacquerware Museum  
↓  
Route 134 - Route 38  
21 min / 12km [Mapcode: 283 798 851\*60]
- 19 Magaki-no-sato  
↓  
Route 38 - Route 249  
28 min / 16.5km [Mapcode: 283 726 644\*33]
- 20 Sojiji Temple  
↓  
Route 249  
9 min / 3.9km [Mapcode: 283 422 024\*74]
- 21 Kuroshima District  
↓  
Route 249  
24 min / 19.3km [Mapcode: 471 703 498\*36]
- 22 Masuhogaura Beach  
↓  
Route 249 - Route 36  
12 min / 7.6km [Mapcode: 471 220 469\*00]
- 23 Ganmon Cave  
↓  
Route 36 - Route 249 - Noto Satoyama kaido Freeway  
40 min / 40.7km [Mapcode: 471 012 826\*63]
- 2 Chirihama Beach Driveway  
↓  
Noto Satoyama kaido Freeway - Route 200  
42 min / 40.3km [Mapcode: 135 000 459\*52]
- 1 Kanazawa



# Discover the beautiful nature of each season



## Masuhogaura Beach [Map:C-3]

This beach is known as one of the three best sites for small shells. Pink *sakura* shells are washed up on the beach during winter and are then used in shellwork.

The 460-meter-long bench is the best spot for watching the sun setting over the Sea of Japan.

📍 Togi-ryoke-machi, Shika-machi, Hakui County  
☎ 0767-32-1111

🌐 <https://www.hot-ishikawa.jp/spot/6500>  
[Mapcode: 471 220 469\*00]

NOTO  
Scenic  
Wonders  
**01**



## Boramachi Yagura Tower [Map:D-2]

Nakai Bay features a calm sea with few waves. The yagura, a wooden tower built in the water, is a sightseeing monument that conveys the image of the Bora fishing that was once undertaken in the sea here.

📍 Negi/ Nakai/ Uchiura, Anamizu-machi, Housu County  
☎ 0768-52-3790

🌐 <https://www.hot-ishikawa.jp/spot/6485>  
[Mapcode: 283 079 422\*00]



## Chirihama Beach Driveway [Map:C-4]

You can drive a car on this sandy beach, which makes it quite rare in the world. The hard, tightly packed sand means there is an approx. 8-kilometer drive to enjoy along the shore.

📍 Chirihama-machi, Hakui City  
☎ 0767-22-1118 (Commerce and Tourism Division, Hakui City)  
🌐 <https://www.hot-ishikawa.jp/english/kanko/20003.html>  
[Mapcode: 135 000 459\*52]



## Noto Satoyama Kaido Freeway

This 90-kilometer vehicle-only road connecting Kanazawa and the Noto Peninsula is a great driving road along the blue coastline and running through green hills.

The Satoyama Kaido vehicle-only road, traversing the Noto Peninsula north to south, is a great driving route that takes in the blue coastline and green hills. When you find some scenery that you like, stop the car and take a picture.



Visit for the spectacular sea and mountain views



## Ganmon Cave [Map:C-3]

A large-scale cave mouth, 6 meters wide, 15 meters high, and 60 meters deep, was formed by coastal erosion. Old pines grow above the cave mouth. There are popular excursion boats that tour around the nearby sites.

📍 Togi-Ushioroshi, Shika-machi, Hakui County  
☎ 0767-32-1111  
🌐 <https://www.hot-ishikawa.jp/english/kanko/20002.html>  
[Mapcode: 471 012 826\*63]



## Hatagoiwa Rock [Map:C-3]

These unusual rocks were formed by the rough waves of the Sea of Japan. The two rocks standing next to each other, 16 and 12 meters high respectively, are connected by a *shimenawa* rope. In winter, they take on a mysterious air when illuminated after sunset.

📍 Shitsumi, Shika-machi, Hakui County  
☎ 0767-32-1111  
🌐 <https://www.hot-ishikawa.jp/spot/6279>  
[Mapcode: 471 132 317\*00]



## Kuroshima District [Map:C-2]

From the 17th to 19th centuries, this district was home to ship owners and seamen who were engaged in maritime trade in the Sea of Japan. Designated as an Important Preservation District for Groups of Historic Buildings in Japan, it retains an atmospheric townscape with a row of houses characterized by black roof tiles and wooden walls.

📍 Kuroshima-machi, Monzen-machi, Wajima city  
☎ 0768-43-1135  
🌐 <https://www.hot-ishikawa.jp/spot/21322>  
[Mapcode: 471 703 498\*36]







**View the blue sea and lush green village from the car window**



#### Senmaida Rice Fields [Map:D-2]

If you drive about 11 kilometers along the route 249 from the center of the city of Wajima, you will arrive at Shiroyone Senmaida rice terraces. These rice terraces, which local farmer have cultivated for over 1300 years, are interwoven with the beautiful scenery of Noto and the Sea of Japan in the background entertain the eyes of visitors.

📍 Shiroyone-machi, Wajima City  
☎ 0768-23-1146 (Wajima City Tourism Division)  
🌐 <http://senmaida.wajima-kankou.jp/en/>  
[Mapcode: 552 615 639\*52]



#### Sosogi Coast [Map:D-1]

A splendid cliff view stretches for about 2 kilometers along the coast and is nationally designated as a Place of Scenic Beauty as well as a Natural Monument. In the harsh winter season, fluffy white cotton-like "Wave Flowers" cover the sea surface, blowing like snow in the seasonal wind.

📍 Machino-machi Sosogi, Wajima City  
☎ 0768-32-0408 (Sosogi Tourism Association)  
🌐 <https://www.hot-ishikawa.jp/english/kanko/20005.html>  
[Mapcode: 552 775 001\*28]

The sea is calm along the coastline of the the Noto Peninsula. However, the west a rough coastline exposed to the waves changes completely at Rokkozaki, sitting la. This is unique to Noto protruding into bay that stretches down the east side of the peninsula is characterized by of the Sea of Japan. The sea view at the northernmost tip of the peninsu- the Sea of Japan.

## Check out a drastically changing sea view

NOTO  
Scenic  
Wonders  
02



#### Rokkozaki (The Tip of the Peninsula) [Map:E-1]

Rokkozaki is situated on the tip of the peninsula and has a 130-year-old white-walled lighthouse. Park your car at the "Roadside station Noroshi" and walk up the slope and steps for a wide panoramic view from the cliff, where you can also hear the breaking waves.

📍 Noroshi-machi, Suzu City  
☎ 0768-82-7776 (Suzu City Tourism and exchange Division)  
🌐 <https://www.hot-ishikawa.jp/english/kanko/20006.html>  
[Mapcode: 913 114 044\*82]

#### Mitsukejima Island [Map:E-2]

The rough coastline eroded by waves completely changes after Rokkozaki, with a calm landscape of the bay and inlet unfolding. Mitsukejima Island is Noto's symbol, rising 28 meters up out of the sea. There is a small rock path that takes you close to the island.

📍 Horyumachi-Ukai, Suzu City  
☎ 0768-82-7776 (Suzu City Tourism and Exchange Division)  
🌐 <https://www.hot-ishikawa.jp/english/kanko/20000.html>  
[Mapcode: 329 525 151\*82]



#### Magaki-no-sato [Map:C-2]

Magaki is a type of fence made from 3-meter-high bamboo trees arranged next to each other with no gap. The two districts of Magaki-no-sato, Kamiozawa and Ozawa, feature a unique landscape in which these bamboo fences are installed around villages to protect the houses from the strong wind blowing in from the Sea of Japan.

📍 Ozawa-machi/ Kamiozawa-machi, Wajima City  
☎ 0768-36-2001  
🌐 <https://www.hot-ishikawa.jp/spot/18439>  
[Mapcode: 283 726 644\*33]



#### Tsukumowan Bay [Map:E-2]

This ria coast made up of small and large coves has gentle waves and clear water, with a view of the calming scenery.

📍 Noto-cho, Housu County  
☎ 0768-62-8532 (Noto-cho town government)  
🌐 <http://www.notocho.jp/lan/en/sightseeing-spot/tsukumo/>  
[Mapcode: 329 222 059\*03]







### Notojima Aquarium [Map:D-3]

There is so much to see at this aquarium, including a dolphin and sea lion show, sea otter feeding, and a penguin walk. It can get particularly crowded during the summer, with many family visitors.

📍 15-40 Magarimachi-Notojima, Nanao City  
☎ 0767-84-1271  
🌐 <https://www.notoaqua.jp/global/english/>  
🕒 9:00-17:00 (March 20 - November), 9:00 - 16:30 (December - March 19) / Closed : 12/29 - 12/31 / 🗳 1,850 JPY [Mapcode: 590 523 457\*33]

### Notojima Glass Art Museum [Map:D-3]

Located on a small hill overlooking the sea, this art museum exhibits glass sculptures based on works by Picasso and Chagall, among others.

📍 125-10, Koda-machi, Notojima, Nanao City  
☎ 0767-84-1175  
🌐 <https://www.hot-ishikawa.jp/english/kanko/20016.html>  
🕒 9:00 - 17:00 (April to November), 9:00 - 16:30 (December to March) / Closed : 3rd Tuesdays (3rd Wednesday when Tuesday is a public holiday); 12/29 - 1/1; Exhibition Preparation Period / 🗳 800 JPY [Mapcode: 590 494 148\*03]



### Noto Shokusai Ichiba (Nanao Fisherman's Wharf) [Map:D-3]

The tourist facilities, comprising a number of restaurants and Noto's specialty shops, also serve as a "Michino-eki."

📍 Ingai 13-1, Fuchu-machi, Nanao City  
☎ 0767-52-7071  
🌐 <http://www.shokusai.co.jp>  
🕒 8:30 - 18:00 (1F), 11:00 - 22:00 (2F, varies depends on restaurants) / Closed : Tuesday, 1/1 / 🗳 Free Entry Fee [Mapcode: 135 776 469\*88]

### Wakura Onsen [Map:C-3]

This lively hot spring resort in Nanao, the central city of Noto Peninsula, features a number of large *ryokans* along the coast overlooking the shimmering blue of Nanao Bay.

[Wakura Onsen Soyū]  
📍 Wakura Onsen, Nanao City  
☎ 0767-62-2221  
🌐 <http://www.wakura.or.jp/en/>  
🕒 7:00 - 22:00 / Closed : All Year Round / 🗳 440 JPY [Mapcode: 590 305 250\*77]



### Kadomi Residence [Map:C-2]

Housing a collection of items, the former residence of the Kadomi family is open to the public. These shipping merchants made their fortune from the maritime trade based in the Sea of Japan. It is located in the Kuroshima District, which is designated as an Important Preservation District for Groups of Historic Buildings in Japan. The district has a streetscape distinguished by remnants of the Edo period.

📍 Ro 94-2, Kuroshima-machi, Monzen-machi, Wajima City  
☎ 0768-43-1135  
🌐 <https://www.hot-ishikawa.jp/spot/4973>  
🕒 9:00 - 17:00 (last admittance 16:30) / Closed : Mondays (Next day when Monday is a public holiday), 12/29 - 1/3 / 🗳 310 JPY [Mapcode: 471 703 498\*36]



NOTO  
Tourist  
Facilities  
01

## Enjoy a slow drive and stopping by places

The strategically developed road network in the Noto District should prevent you from getting lost while driving. Let's enjoy a slow drive, stopping off at different places. Also, stop at Michino-eki, which have been developed in various places with the aim of helping you have a safe and comfortable car journey.

### Keta Taisha Shrine [Map:C-4]

This 2100-year-old shrine stands on a hill facing the Sea of Japan. It features magnificent historic shrine constructions, such as the gate and a worship hall, which are designated as National Important Cultural Properties.

📍 KU-1 Jikemachi, Hakui City  
☎ 0767-22-0602  
🌐 <https://www.hot-ishikawa.jp/english/kanko/20010.html>  
🕒 8:30 - 16:30 / Closed : Open All Year Round / 🗳 Free Entry Fee [Mapcode: 135 302 673\*30]



### Myoji Temple [Map:C-4]

Founded in 1294, its ten buildings, including the main hall and five-storied pagoda, are designated as National Important Cultural Properties. It also has some beautiful and well-renowned gardens.

📍 Yo-1, Takidani-machi, Hakui City  
☎ 0767-27-1226  
🌐 <http://myoji-temple.jp/english.html>  
🕒 8:00 - 17:00 (April to October), 8:00 - 16:30 (November to March) / Closed : Open All Year Round / 🗳 500 JPY. [Mapcode: 135 423 164\*06]

## Michino-eki

Equipped with rest facilities, these serve as an oasis for drivers, in addition to providing sightseeing information and selling local specialties.



**Michino-eki Noto Chirihama** [Map:C-4]  
With a focus on food, it offers a selection of high-quality local ingredients and products.

📍 Ta 1-62, Chirihama-machi, Hakui City  
☎ 0767-22-3891  
🌐 <https://www.michi-no-eki.jp/stations/view/14144>  
🕒 9:00 - 18:00 (depending on the facility) [Mapcode: 135 152 856]



**Michino-eki Takamatsu** [Map:C-4]  
Located on the side of the Noto Satoyama Kaido vehicle-only road.

📍 Fu 16-3, Futatsuya, Kahoku City  
☎ 076-281-2221  
🌐 <https://www.michi-no-eki.jp/stations/view/467>  
🕒 8:00 - 19:00 📶 Free Wi-Fi [Mapcode: 336 402 879]



**Michino-eki Wajima** [Map:C-2]  
There is a tourist information desk and a store selling local specialties.

📍 20-1-131, Kawai-machi, Wajima City  
☎ 0768-22-1503  
🌐 <https://www.michi-no-eki.jp/stations/view/474>  
🕒 10:00 - 18:00 📶 Free Wi-Fi [Mapcode: 283 799 242]



**Wajima Morning Market** [Map:C-2]

The morning market is said to have a history dating back over 1000 years and is open almost every day. The high street where the market is held contains shops selling seafood, vegetables, lacquerware, Japanese confectionery, etc. and gets crowded with many shoppers.

📍 Asaichi-dori Ave. Kawai-machi, Wajima City  
☎ 0768-22-7653 (Wajima Asaichi Association)  
🌐 <https://www.hot-ishikawa.jp/english/kanko/20022.html>  
🕒 8:00 - Noon / Closed : 2nd Wednesdays and the 4th Wednesdays every month. 1/1 - 1/3  
[Mapcode: 283 828 226\*25]

**Kiriko Lantern Museum** [Map:C-2]

From July to September, a vibrant "Kiriko Festival" is held in various places across the Noto Peninsula. Kiriko is a huge lantern that is regarded as *yorishiro*, a representative object of a divine spirit. A number of Kiriko, which plays a main part in the festival, are on display at the Wajima Kiriko Art Museum.

📍 Marine-town 6-1, Wajima City ☎ 0768-22-7100  
🌐 <http://wajima-kiriko.com/en/>  
🕒 8:00 - 17:00 / Closed : Open All Year Round / 📄 620 JPY  
[Mapcode: 283 829 248\*00]

NOTO  
Tourist  
Facilities  
02**Okunoto Salt Farm Village** [Map:D-1]

Salt-making using a traditional "Agehama-style" technique continues to be performed in this coastal area. You can experience salt-making at Suzu Endenmura and also buy natural salt made using the Agehama-style technique.

📍 1-58-1 Shimizu-machi, Suzu City  
☎ 0768-87-2040  
🌐 <https://www.hot-ishikawa.jp/english/kanko/20021.html>  
🕒 9:00 - 17:00 (Last Admittance 16:30) / Closed : Open All Year Round / 📄 100 JPY  
[Mapcode: 552 869 001\*52]

**Sojiji Temple** [Map:C-2]

It was founded in 1321 as the main temple of the Soto school. After the precincts were destroyed in the 1898 Great Fire, the mountain gate and *but suden* hall, etc. were rebuilt, retaining the qualities of the past along with the buildings that survived.

📍 KO-1-18 Monzen Monzen-machi, Wajima City  
☎ 0768-42-0005  
🌐 <https://noto-soin.jp/en/>  
🕒 8:00 - 17:00 / Closed : Open All Year Round / 📄 400 JPY  
[Mapcode: 283 422 024\*74]



*Noto is a gold mine for traditional culture, such as Wajima-nuri, regarded as one of the best Japanese lacquerwares, in addition to the energetic Kiriko Festivals held in various parts of the Noto Peninsula every summer. Why not tour around the related facilities to explore Japanese traditional techniques, aesthetic sense, and spirituality?*

**Explore Japanese aesthetic sense and spirituality**

**Oku-noto Triennale** [Map:E-1]

The OKU-NOTO TRIENNALE was held in Suzu, a town on the northernmost tip of the Noto Peninsula in 2017. It showcased works by 39 pairs of artists in various places across the city. Some of the works remained on permanent display after the end of the art festival.

📍 Suzu City  
☎ 0768-82-7720 (Oku-noto Triennale office)  
🌐 <http://oku-noto.jp/en/>  
[Mapcode: 329 682 693\*11]

**Wajima Lacquerware Museum** [Map:C-2]

The first floor contains a shopping area run jointly by around 60 lacquerware specialty shops in Wajima City. The second floor has a display of different materials related to the production process and the history and culture of Wajima lacquerware.

📍 24-55, Kawai-machi, Wajima City  
☎ 0768-22-2155  
🌐 <https://wajimanuri.or.jp/frame-e.htm>  
🕒 8:30 - 17:00 / Closed : Open all year round / 📄 300 JPY  
[Mapcode: 283 798 851\*60]

**Wajima Kobo Nagaya** [Map:C-2]

Wajima lacquerware, one of the oldest lacquerwares in Japan, is popular in the country as a luxury item. At Wajima Kobo Nagaya, you can see the manufacturing process of Wajima lacquerware and experience its pattern painting.

📍 4-66-1, Kawai-machi, Wajima City  
☎ 0768-23-0011  
🌐 <https://www.hot-ishikawa.jp/english/kanko/20020.html>  
🕒 9:00 - 18:00 (May to August), 9:00 - 17:00 (September to April) / Closed : Wednesdays (Open on 10th, 25th of every month as well as on the Wednesdays when local markets are in operation.) / Free  
[Mapcode: 283 829 001\*33]

**Suzu Ware Museum** [Map:E-1]

Suzu ware is pottery produced in and around Suzu between the late 12th century and the end of the 15th century. The museum exhibits Suzu ware from different eras.

📍 1-2-563, Takojima-machi, Suzu City  
☎ 0768-82-6200  
🌐 <https://www.hot-ishikawa.jp/spot/5642>  
🕒 9:00 - 17:00 / Closed : 12/29 - 1/3 / 📄 310 JPY  
[Mapcode: 329 684 465\*82]

**Noto Satoyama Airport** [Map:D-2]

The airport is located in the center of the Noto Peninsula, with two daily flights (two round-trips) to Tokyo International / Haneda Airport. The deck on the third floor has views of the airplanes as well as out to Nanao Bay and Notojima Island in the distance.

📍 10-11-1, Sue, Mi-machi, Wajima City  
☎ 0768-26-2000  
🌐 <https://www.hot-ishikawa.jp/spot/13397>  
🕒 8:30 - 17:30 / Closed : Open all year round  
[Mapcode: 283 475 067\*52]



# NOTO Activities

## Jump into the nature and culture of Noto

Surrounded by the sea and blessed with nature, Noto offers an abundance of outdoor activities. In addition to plenty of marine leisure, this is the only place in the whole of Japan where you can experience some of the activities on offer, such as traditional salt making at the seaside. A craft experience should also not be missed to satisfy your intellectual curiosity.



### Wajima-nuri Experience

Wajima-nuri produced in Wajima City is a luxury lacquerware representative of Japan that features high strength and durability as well as artistic beauty.

Wajima Kobo Nagaya exposes the Wajima-nuri production process, in addition to offering its decorative techniques, *chinkin* and *makie*. Chopstick making using the *chinkin* technique is highly recommended. You use a chisel to carve a pattern onto the surface of a chopstick, rub some lacquer into the grooves, and apply gold powder to it. A pattern will then emerge.

[Wajima Kobo Nagaya] [Map:C-2]  
 4-66-1, Kawai-machi, Wajima City  
 ☎ 0768-23-0011  
 🏠 <https://www.hot-ishikawa.jp/english/kanko/20020.html>  
 ⌚ 9:00 - 18:00 (May to August), 9:00 - 17:00 (September to April) / Closed : Wednesdays (Open on 10th, 25th of every month as well as on the Wednesdays when local markets are in operation.) / 🆓 Free  
 [Mapcode: 283 829 001\*33]



### Salt Making Experience

Okunoto Salt Farm Village; Michino-eki Suzu Enden-Mura is a tourist facility that conducts "Agehama-style" salt making, which dates back over 400 years in Noto, and aims to disseminate its culture. The Agehama-style is a technique used in salt-making. Seawater is spread across an area of sand called a salt field and left to evaporate in the sun. The concentrated seawater is then boiled in a caldron to obtain the salt crystals. This facility allows you to experience a part of this traditional salt making. The salt made with old-fashioned wisdom and techniques contains abundant minerals and has a mild taste.

[Okunoto Salt Farm Village] [Map:D-1]  
 1-58-1, Simizu-machi, Suzu City  
 ☎ 0768-87-2040  
 🏠 <https://www.hot-ishikawa.jp/english/kanko/20021.html>  
 ⌚ 13:00 - 16:00 / Season: 5/1 - 9/30 / 🆓 2000 yen  
 [Mapcode: 552 868 029\*06]



### A goldmine of a beautiful coast and delicious food

Noto is a wonderful area that has the beautiful scenery of Chirihama and Wajima, hot spring towns that represent Noto such as Wakura Onsen and Wajima Onsen, and various events that take place across the Noto Peninsula. The magnificent Noto Kiriko Festival is held in the summer. Noto has kind people, beautiful sea, delicious food, and clean air. Please enjoy your stay in Noto.

PHAN THI HUYNH LIEN | From Vietnam and living in Nakanoto-machi.



### Sailing Experience

Based on the Nanao Bay, which is calm throughout the year, Noto Sailing Adventure organizes and manages activities using yachts. On the sailing experience, you will board the yacht with staff, have a go at handling the sail, and sail through the Noto sea. Passengers will also raise and lower the sail as a member of the crew. If you are lucky, you may see wild dolphins. In addition to sailing, there are sea kayaking and dinghy experiences available.

[Noto Sailing Adventure] [Map:C-3]  
 "Café Yuho", 114, Sode, Nakajima-machi, Nanao City  
 🏠 <http://sailingadventure.jp>  
 ⌚ 9:00 - 18:30 / Closed : Thursdays  
 🗣 English Spoken  
 [Mapcode: 590 510 188\*41]



### Cycling Tour

With a population of around 3,100, Notojima is a small island, 72 kilometers around, located in the sea off the east side of the Noto Peninsula. While driving is fun, riding a bicycle will help you feel closer to the island's relaxing air. Notojima Lifestyle Labo offers cycling tours, where a Noto resident guide will take you around the island. A bicycle trip offers you a glimpse into people's ordinary lives. An English guide is also available.

[NOTO NOTE (Notojima Lifestyle Labo)] [Map:D-3]  
 Ni-bu 16, Mukouda-machi, Notojima, Nanao City  
 📧 [info@notonote.com](mailto:info@notonote.com)  
 🏠 <https://notonote.amebaownd.com>  
 ⌚ 9:00-12:30 / 13:30-17:00 (3 hours and 30 min.) / Season: March - November  
 🗣 English Spoken  
 [Mapcode: 590 465 369\*88]



### Suzu-yaki Experience

Suzu-yaki is a type of pottery that was produced mainly in Suzu City, Noto from the latter half of the 12th to the end of the 15th centuries. The practice was then subsequently revived in the 1970s. The pottery is produced using local earth that is rich in iron and then baked with no glaze applied. This creates a rough matte texture and a chic gray-black color. In the experience, you will use a potter's wheel and make a shape by hand. With 1 kg of clay, it is possible to create a large plate or two to three small plates or bowls.

[Suzu City Pottery Center] [Map:E-1]  
 1-2-480, Takojima-machi, Suzu City  
 ☎ 0768-82-3221  
 🏠 <https://www.hot-ishikawa.jp/spot/5654>  
 ⌚ 9:00 - 17:00 🆓 3000 yen  
 [Mapcode: 329 685 604\*55]



### Going to the beach

There are beaches everywhere in Noto, including sandy beaches and rocky areas with beautiful scenery. Among the recommended beaches are Masuhogaura, which runs adjacent to a campsite with an auto camping ground and cabins, Marine Park Beach, with its calm waves and a public hot spring nearby, and Mitsuke Beach, from which the Tateyama mountain range can be seen in the distance on a clear, sunny day. All of these beaches have facilities such as changing rooms and showers, so you can just drop by during your drive.

[Masuhogaura beach] [Map:C-3]  
 13-1, Aikami, Shika-machi, Hakui County  
 ☎ 0767-42-2125 [Mapcode: 471 220 606\*47]  
 [Marine Park Beach] [Map:D-3]  
 29-2, Sanami-machi, Notojima, Nanao City  
 ☎ 0767-84-1113 [Mapcode: 590 405 816\*85]  
 [Mitsuke Beach] [Map:E-2]  
 Ukai, Houdatsu-machi, Suzu City  
 ☎ 0768-84-2318 [Mapcode: 329 524 037\*41]





## Noto Local Specialities

# Food and culture developed by Noto's Satoyama and Satoumi, certified as a Globally Important Agricultural Heritage System

\*Noto's Satoyama and Satoumi spreads across four cities and five towns in Noto.

Cold and warm currents intersect off the coast of Noto, making it a rich fishing area inhabited by a variety of fish and shellfish. It is for this reason that fish from Ishikawa has a reputation for being delightful in Japan. Noto has plenty of delicious ingredients thanks to its thriving fishery and agriculture. Since it is also one of the best *sake* brewing areas in the country, many restaurants serve locally produced *sake*. Food culture is not the only thing to have been nurtured by the climate of Noto. Wajima lacquerware naturally developed as a tool for everyday use by the people in Wajima, Noto. Its design was then gradually improved and it is now celebrated as Japan's best lacquerware as a form of art craft.

### Sushi

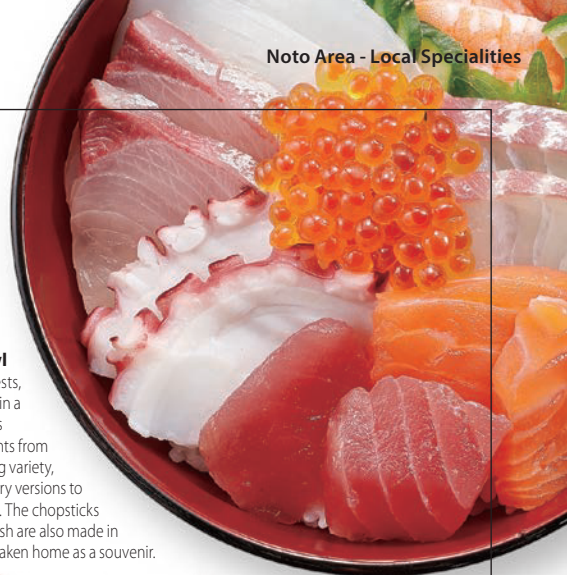
Among the range of Japanese cuisine that has been registered as UNESCO

Intangible Cultural Heritage, *sushi* is the most famous around the world. While Ishikawa is famous for its tasty *sushi*, you will enjoy even more delicious *sushi* in Noto, where fish and shellfish are landed right there at the port.



### Notodon bowl

As its name suggests, this dish is served in a bowl and contains different ingredients from Noto. There is a big variety, ranging from luxury versions to more simple ones. The chopsticks served with the dish are also made in Noto and can be taken home as a souvenir.



Noto Area - Local Specialities



### Wajima Lacquerware

You will see Wajima lacquerware shops here and there when walking down the street in Wajima. Wajima lacquerware, a traditional craft representative of Japan, is a masterpiece that can be cherished for life.

### Kano-gani Crab

Known by their brand name, Kano-gani, snow crabs from Ishikawa are the king of tastes from the Sea of Japan in winter. The thick legs are packed with meat, which seems to overflow when you crack the shell. Boiling brings out the sweet, moist, delicate flavor to be enjoyed.



### Noto-Ushi Beef

The branded Noto Beef comes from cattle raised in the rich nature of Noto and is distinguished by its fine meat and high-quality fat. It is dubbed "hard-to-find beef" due to its low circulation volume and the fact that it can only be eaten in Ishikawa.



### Sweet Shrimp

Sweet shrimps live on the deep seabed off the coast of the Noto Peninsula. During the best season, which runs from early September to late February, While eating them raw is the best way to enjoy the taste of these fresh sweet shrimps, deep-frying or putting them in *miso* soup are also recommended.



### Oyster

Noto Oyster (*magaki*) farming thrives in Nanao Bay. The thick and sweet oysters are best enjoyed in winter. *Iwagaki* oysters begin to circulate around April. Most of them are wild caught and are characterized by their rather big meat. They are most tasty in summer.





## AROUND NOTO TOYAMA

### Drive from Noto to Toyama along the coast



#### ① Tonami Tulip Fair

The city park has seasonal flowers to enjoy, particularly tulips from Tonami City. The Tonami Tulip Fair is held here from late April to early May every year. It is the biggest flower festival in Japan and showcases three million tulips.

📍 100-1 Nakamura, Nanto City, Toyama  
☎ 0763-33-7716 [Tonami Tulip Gallery]  
🌐 [https://foreign.info-toyama.com/en/spot/?spot\\_id=41&ret\\_list\\_p=2](https://foreign.info-toyama.com/en/spot/?spot_id=41&ret_list_p=2)  
[Mapcode: 122 505 380\*60]



#### ② Gokayama

The two Gassho-style villages of Ainokura and Suganuma lie in the Gokayama area, surrounded by steep mountains. Together with Sirakawa-go, they are listed as UNESCO World Heritage Sites. The scenery is like a beautiful fairy tale scene and touches your heart.

[Ainokura] 📍 Ainokura, Nanto city, Toyama  
☎ 0763-66-2123 [Mapcode: 549 622 678\*00]  
🌐 [https://foreign.info-toyama.com/en/spot/?spot\\_id=27&ret\\_list\\_p=1](https://foreign.info-toyama.com/en/spot/?spot_id=27&ret_list_p=1)  
[Suganuma] 📍 Suganuma, Nanto city, Toyama  
☎ 0763-66-2468 [Mapcode: 549 556 112\*33]  
🌐 [https://foreign.info-toyama.com/en/spot/?spot\\_id=29&ret\\_list\\_p=1](https://foreign.info-toyama.com/en/spot/?spot_id=29&ret_list_p=1)



#### ③ Zuisen-ji Temple

A sculptor was invited from Kyoto to reconstruct Zuisen-ji Temple, which was destroyed by fire in 1763. He handed down his techniques to local carpenters. Take your time to appreciate the magnificent sculptures contained within the temple building.

📍 3050 Inami, Nanto City, Toyama  
☎ 0763-82-0004  
🌐 [https://foreign.info-toyama.com/en/spot/?spot\\_id=37](https://foreign.info-toyama.com/en/spot/?spot_id=37)  
[Mapcode: 122 207 570\*44]



#### ④ Ooiwasan Nissekiji Temple

Located at the base of the Tateyama mountain range, the head temple for the Shingon Missyu school has a history dating back around 1,300 years. There are a number of attractions, including Fudo Myo-o statue, a three-tier pagoda, a temple gate, and six small waterfalls.

📍 3050 Inami, Nanto City, Toyama  
☎ 0763-82-0004  
🌐 <https://www.info-toyama.com/spot/31004/>  
[Mapcode: 144 287 069\*22]



#### ⑥ Kurobe Gorge

A railroad cuts through Kurobe Gorge through the hidden scenic spot. The great journey through nature takes 1 hour and 20 minutes one way. Every season brings different stunning views to enjoy; fresh green in the spring, clear streams in the summer, and red leaves in the fall.

📍 11 Kurobekyokoguchi, Kurobe City, Toyama  
☎ 0765-62-1011  
🌐 [https://foreign.info-toyama.com/en/spot/?spot\\_id=18&ret\\_list\\_p=3](https://foreign.info-toyama.com/en/spot/?spot_id=18&ret_list_p=3)  
[Mapcode: 220 235 410\*60]



National Routes 160 and 415 run from Nanao City, Ishikawa mi and Amaharashi Beaches in Toyama named Noto Tateyama Seaside Line, they driving routes along the coast. There are also places to visit in Toyama Prefecture.



#### ⑤ Tateyama Kurobe Alpine Route

This mountain sightseeing route takes you through a majestic mountain landscape via a cable car, ropeway, trolleybus, and other forms of transport. The period from spring to early summer sees the huge Snow Walls appear.

📍 11 Kokuyurin, Bunasakasoto, Ashikuraji, Tateyama-machi, Nakaniiikawa County, Toyama  
☎ 076-432-2819  
🌐 [https://foreign.info-toyama.com/en/spot/?spot\\_id=11&ret\\_list\\_p=1](https://foreign.info-toyama.com/en/spot/?spot_id=11&ret_list_p=1)  
[Mapcode: 889 278 109\*28]



# KAGA AREA

Boasting hot spring towns and natural beauty

## Indulge yourself in a trip to the mountains, rivers, sea, and town

Kaga is known as one of the best hot spring areas in Hokuriku. With a rental car, you will be able to enjoy easy access to the hot springs in mountainous areas and visit more than one hot spring town. The ancient Natadera Temple, which blends both natural and architectural beauty, is a must-visit place. It takes around one hour by car from Kanazawa to the Kaga area. On the first day, you can stroll through the beautiful landscape, which is unique to Japan, taking in scenes such as an old folk house with a cedar forest and rustic countryside, and then stay at Yamanaka Onsen. On the second day, visit a port town facing the Sea of Japan and enjoy visitor experience as well as shopping. We suggest a 2-day, 1-night drive for families.



### ITINERARY

#### 1st day

- 1 Kanazawa  
↓  
Route 146 - Route 157 - Route 8 - Route 305  
60 min / 32.3km
- 2 Kibagata Park  
↓  
Route 305  
8 min / 4km [Mapcode: 120 414 584\*06]
- 3 Michino-eki Komatsu Kibagata  
↓  
Route 8 - Route 163  
10 min / 8.9km [Mapcode: 120 415 895]
- 4 The Forest of Wisdom  
↓  
4 min / 3.9km [Mapcode: 120 266 071\*14]
- 5 Traditional Handicrafts Village "Yunokuni-no-mori"  
↓  
Route 11 - Route 43  
4 min / 2.3km [Mapcode: 120 262 469\*44]
- 6 Natadera Temple  
↓  
Route 11 - Route 39  
19 min / 11.6km [Mapcode: 120 230 204\*47]
- 7 Kakusenkei Gorge  
↓  
Route 39  
4 min / 950m [Mapcode: 899 540 691\*14]
- 8 Yamanaka Onsen (Stay Overnight)

#### 2nd day

- 8 Yamanaka Onsen  
↓  
Route 364  
29 min / 14.4km [Mapcode: 899 570 214\*22]
- 9 Hashitate Fishing Port District  
↓  
Route 148  
10 min / 2.2km [Mapcode: 120 337 647\*25]
- 10 Kasa-no-misaki Cape  
↓  
Route 29  
12 min / 4.3km [Mapcode: 120 336 818\*88]
- 11 Kaga Fruit Land  
↓  
Route 143 - Route 140  
13 min / 6.3km [Mapcode: 120 247 721\*17]
- 12 Tsukiusagi-no-sato  
↓  
Route 61 - Route 8  
16 min / 8.6km [Mapcode: 120 123 883\*25]
- 13 Kutani Mangetsu  
↓  
Route 8  
26 min / 18.6km [Mapcode: 120 157 288\*60]
- 14 Aeon Mall Shinkomatsu  
↓  
Route 305 - Route 8 - Route 157 - Route 146  
58 min / 29.7km [Mapcode: 120 536 041\*77]
- 1 Kanazawa



# Explore the landscape created by people and nature

In the Kaga area, you will find that historic temples, buildings, and beautiful towns are located close to the mountains, rivers, and sea. There is a cultural landscape on each piece of land that people have built over the years, and evokes a strong desire to travel.



## Natadera Temple [Map:B-6]

Many of the buildings at this old temple with a 1,300-year history are designated as National Important Cultural Properties. The natural rocky mountains form a unique landscape in the vast precincts, especially with the magnificent autumn leaves. The best time for autumn leaves is from late October to late November.

📍 YU-122 Natamachi, Komatsu City  
☎ 0761-65-2111  
🏠 <http://www.natadera.com/EN/>  
🕒 8:30 - 16:45 (March to November) 8:45 - 16:30 (December to February) / Closed: Open All Year Round / 🇯🇵 600 JPY  
[Mapcode: 120 230 204\*47]



## The Forest of Wisdom [Map:B-6]

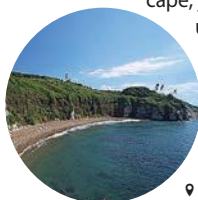
This area is open to tourists as a sightseeing spot for moss, including the gardens, a shrine, and old folk houses surrounded by beautiful cedar forests. Experience rustic Japanese life culture in a beautiful village and mountainous landscape.

📍 Tora-71, Hiyo-machi, Komatsu City  
☎ 090-7083-6969  
🏠 <http://forestofwisdom.org/en/>  
🕒 9:00 - 16:00 / Closed: December to March / 🇯🇵 500 JPY  
[Mapcode: 120 266 071\*44]



## Kasa-no-misaki Cape [Map:A-6]

There is a beautiful contrast between the white lighthouse and the blue sea at this cape. When you stand at the tip of the cape, you will see a spectacular panoramic view of the Sea of Japan on both sides. You can also enjoy strolling along the seaside trail.



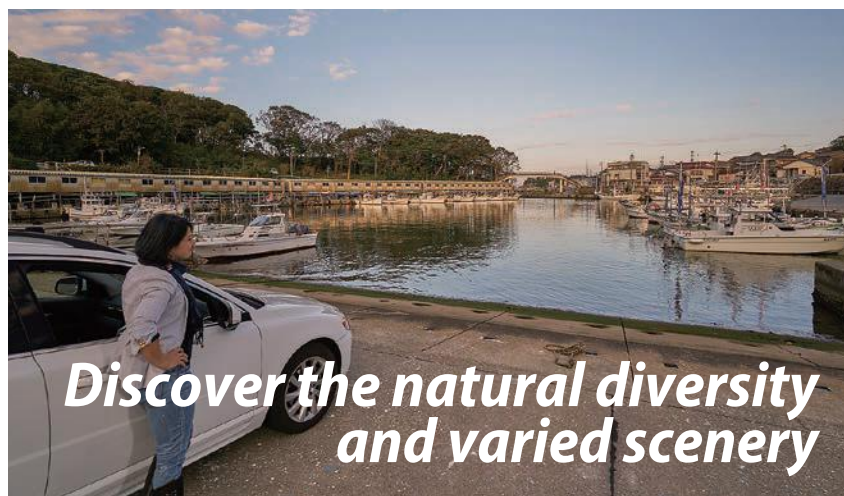
📍 Hashitate-machi, Kaga City  
☎ 0761-72-7892  
🏠 [http://visitkaga.com/places\\_of\\_interest/hashitate/kasanomisaki.php](http://visitkaga.com/places_of_interest/hashitate/kasanomisaki.php)  
[Mapcode: 120 336 818\*88]



## Hashitate Fishing Port District [Map:A-6]

During the Edo period, the Sea of Japan was an important route for the shipping of rice, fish, etc. from the ports in Hokkaido to Tokyo and Osaka. The town of Hashitate prospered through such maritime transport and is designated as an Important Preservation District for Groups of Traditional Buildings, with the streetscapes from the time being protected.

📍 Hashitate, Kaga City  
☎ 0761-72-6678 (Kaga City Tourism Information Center)  
🏠 [http://visitkaga.com/places\\_of\\_interest/hashitate/fishing.php](http://visitkaga.com/places_of_interest/hashitate/fishing.php)  
[Mapcode: 120 337 647\*25]



# Discover the natural diversity and varied scenery

## Kibagata Park [Map:B-6]

The development of this park centers on a lake called Kibagata, which provides a fantastic view of Mt. Hakusan. The 6.4-km path through the park is ideal if you wish to take a stroll. You can also hire a boat or a bicycle.

📍 Ra 58, Mitani-machi, Komatsu City  
☎ 0761-43-3106  
🏠 <http://www.komatsuguide.jp/index.php/spot/detail/19/1/1/en/>  
🕒 8:30 - 17:00 / Closed: Open All Year Round  
[Mapcode: 120 414 584\*06]



**KAGA**  
Scenic  
Wonders

## Kakusenkei Gorge [Map:B-6]

One of the charms of Yamana Onsen is that it is blessed with natural beauty, such as a gorge and mountain streams. In particular, Kakusenkei Gorge is gaining popularity as a quaint spot for autumn leaves. The best time for autumn leaves is from mid to late November.

📍 From 1 Yamanaka Onsen Higashi-machi to Koorogi-machi, Kaga City  
☎ 0761-78-0330 (Yamanaka Onsen Tourism Association)  
🏠 [http://visitkaga.com/places\\_of\\_interest/yamanaka/kakusenkei.php](http://visitkaga.com/places_of_interest/yamanaka/kakusenkei.php)  
[Mapcode: 899 540 691\*14]



## Daishojigawa River [Map:A-6]

There are still remnants of the old castle town of Daishoji along the former Daishoji River. Choryutei is situated in the precincts of the Enuma Shrine, which sits by the river. It was built in 1709 as a resting facility for the lords of the Daishoji domain.

📍 87 Daishoji Hachiken-michi, Kaga City  
☎ 0761-72-6662  
🏠 [http://visitkaga.com/places\\_of\\_interest/daishoji/](http://visitkaga.com/places_of_interest/daishoji/)  
[Mapcode: 120 187 650\*77]







**Ataka-no-seki Barrier Ruins** [Map:B-6]  
“Kanjincho” (The Subscription List) is set in this place and the anecdote is one of the most iconic of the *kabuki* plays. The bronze statues of the three characters stand together here. There is a nearby restaurant and souvenir shop where you can enjoy a fabulous view of the Sea of Japan.

📍 Ataka-machi, Komatsu City  
📞 0761-21-6734 [Kanjincho Monogatari-kan Museum]  
🌐 <http://www.komatsuguide.jp/index.php/spot/detail/104/1/2/en/>  
🕒 9:00 - 17:00 / Closed : Wednesdays; End and Beginning of Year / 📄 300 JPY  
[Mapcode: 120 590 821\*11]

### Kutaniyaki Art Museum [Map:A-6]

This museum houses and exhibits masterpieces of Kutani Ware, which has a history of 360 years. There are divergent exhibition spaces that contain a display of Kutani Ware, whose patterns vary with the times.

📍 1-10-13 Daishoji Jikata-machi, Kaga City  
📞 0761-72-7466  
🌐 <http://www.kutani-mus.jp/en/>  
🕒 9:00-17:00 (last admittance 16:30) / Closed : Mondays (opens on holidays), 12/29 - 1/3 / 📄 500 JPY  
[Mapcode: 120 157 857\*33]



### Traditional Handicrafts Village "Yunokuni-no-mori" [Map:B-6]

With the old folk houses relocated to a vast forest, this facility offers information on traditional crafts. See the process of making crafts and experience a variety of traditional crafts, such as Yuzen dyeing and ceramics.

📍 NA-3-3 Awazu Onsen, Komatsu City  
📞 0761-65-3456  
🌐 <https://yunokuni.jp/mori/?lang=en>  
🕒 8:30 - 17:00 (2/21 - 11/30), 9:00 - 16:30 (12/1 - 2/20) / Closed : Open All Year Round / 📄 540 JPY  
[Mapcode: 120 262 469\*44]

### Motorcar Museum of Japan [Map:B-6]

Five hundred prestigious cars from different countries are on permanent display in a vast space. The only existing Rolls-Royce Silver Wraith produced in Britain in 1948, an extraordinary Toyota 2000 GT, and successive Skylines are all must-sees.

📍 40 Ikkanyama, Futatsunashi-machi, Komatsu City  
📞 0761-43-4343  
🌐 <http://mmj-car.com/english/>  
🕒 9:00 - 17:00 (last admittance 16:30) / Closed : 12/29 - 12/31 / 📄 1,000 JPY  
[Mapcode: 120 292 660\*82]



**KAGA**  
Tourist  
Facilities

### Katayamazu Onsen [Map:B-6]

This hot spring area is located on the shores of the Shibayama-gata lagoon, with a view of sacred Mt. Hakusan. Every year from around late October to early February, you can see the beautiful white swans that spend the winter at Shibayama-gata.

📍 Otsu-65-2, Katayamazu-onsen, Kaga City  
📞 0761-74-0550 (Katayamazu Onsen Soyu)  
🌐 <http://www.katayamazu-spa.or.jp/en/>  
🕒 6:00 - 22:00 / Closed : Open All Year Round / 📄 440 JPY  
[Mapcode: 120 344 078\*77]



*Go on a trip to discover present-day Kaga, as well as its history*

*There are four historic hot spring towns in Kaga. With a rental car, you will be able to visit art museums and visitor experience facilities in the vicinity of each hot spring town. In contrast, there are modern shopping facilities in the suburbs packed with shoppers.*

### Yamanaka Onsen [Map:B-6]

With its 1,300-year history, this is one of the hot spring towns that represent Ishikawa. Although surrounded by mountains, fresh seafood is delivered from a fishing port thanks to its proximity to the Sea of Japan. Taste a gift from the Sea of Japan, such as winter crabs and yellowtail, in the gourmet town of Yamanaka Onsen.

📍 Re-1, Yunode-machi, Yamanaka onsen, Kaga City  
📞 0761-78-4026 (Yamanaka Onsen Soyu [Kikunoyu])  
🌐 <https://www.yamanaka-spa.or.jp/global/eng/>  
🕒 6:45 - 22:00 / Closed : Open All Year Round / 📄 440 JPY  
[Mapcode: 899 570 214\*22]



### Yamashiro Onsen [Map:B-6]

This hot spring resort is centered around two communal baths, with a number of *ryokans* standing around them. Also known as the town of Kutaniyaki, the area has mini galleries of Kutaniyaki in the *ryokans* and shops.

📍 18-128, Yamashiro-onsen, Kaga City  
📞 0761-76-0144 (Yamashiro Onsen Kosoyu)  
🌐 <http://www.yamashiro-spa.or.jp/foreign/en>  
🕒 6:00 - 22:00 / Closed : Mornings of the 4th Wednesday of the month (opens at noon) / 📄 500 yen  
[Mapcode: 120 133 261\*41]

## Shopping



### Aeon Mall Shinkomatsu [Map:B-6]

This is a large shopping center that opened in March 2017 and has around 160 specialty stores.

📍 315 Seiroku-machi, Komatsu City  
📞 0761-20-8530  
🌐 <https://en.aeonmall.global/mall/shinkomatsu-aeonmall/>  
🕒 10:00 - 21:00 (depending on the facility) / Closed : Open All Year Around  
[Mapcode: 120 536 041\*77]



### Michino-eki Komatsu Kibagata [Map:B-6]

The sales floor provides locally produced agricultural products and processed food. You can also collect information on the neighborhood's tourist attractions.

📍 Ke 2-2, Rendaiji-machi, Komatsu City  
📞 0761-25-1188  
🌐 <https://www.michino-eki.jp/stations/view/485>  
🕒 8:30 - 18:30 (depending on the facility) / Closed : 1/1 - 3, Wednesday from Jan to Feb 📄 Free Wi-Fi  
[Mapcode: 120 415 895]



### Tsukiusagi-no-Sato [Map:A-6]

You can pet rabbits that run loose at this leisure facility. There is also a café and restaurant so you can spend a relaxing day here.

📍 43-41 Nagai-machi, Kaga City  
📞 0761-73-8116  
🌐 <https://www.hot-ishikawa.jp/english/kanko/20097.html>  
🕒 9:00 - 17:00 / Closed : Open All Year Around / 📄 Free Entry Fee  
[Mapcode: 120 123 883\*25]



## KAGA Activities

### A wide variety of leisure activities and experiences for families

If you wish to experience Japanese traditional crafts, we recommend Yamanaka lacquerware or Kutani Ware, which both originate from Kaga. There is also a number of other leisure activities and visitor experiences for families, such as fruit picking, hot springs, walks, and rowing boat rides.



#### Yamanaka Lacquerware – Wood Cutting Experience

"mokume" is a workshop-cum-store run by a wood base craftsman of Yamanaka lacquerware. While wood base craftsmen generally cut a shape out of wood, Yamanaka lacquerware wood base craftsmen apply the best "woodturning" technique in Japan to cut out a round object, such as a bowl, using a potter's wheel. At the workshop, you can make a wooden vessel through this woodturning technique. A craftsman will then finish your vessel with lacquer or oil at a later date before shipment. Or experience for yourself crafting a small box or an object, which you can take home with you on that day.

[mokume] [Map:B-6]  
 ♣ Ni 60, Yamanaka Onsen Sakae-machi, Kaga City  
 ☎ 0761-78-1757  
 🌐 <https://mokume-kjimdo.com>  
 ⌚ 10:00 - 16:00 / Closed: Thursdays / 📦 3000 JPY ~  
 [Mapcode: 899 570 063\*33]



#### Kutani Ware - Potter's Wheel and Painting Experiences

Kutani Mangetsu is the largest Kutani Ware specialty shop in Hokuriku. It sells a variety of Kutani Ware, ranging from vessels for daily use to art objects, and also offers a hands-on experience of Kutani Ware. During the painting experience, you can decorate a vessel, such as a mug, vase, or plate, with the pattern of your choice, while during the potter's wheel experience, you can mold a vessel using an electric potter's wheel. Your item will be shipped at a later date, so you can look forward to receiving your finished item at home. This will become the best memory of your trip.

[Kutani Mangetsu] [Map:B-6]  
 ♣ Ru 95-2, Nakadai-machi, Kaga City  
 ☎ 0120-47-2121  
 🌐 <https://www.mangetsu.co.jp>  
 ⌚ 8:00 - 17:00 / Closed: Open All Year Around / 📦 1500 JPY ~  
 [Mapcode: 120 192 288\*60]



#### Fruits Picking

Kaga Fruit Land is a tourist farm which offers fruits-picking activities all year round, including strawberries from winter to spring; cherries and blueberries in the early summer; grapes from summer to fall; and apples in winter. You can pick seasonal fruits with your own hands and taste them on site. The juice, jams, sweets etc. that are made with the farm's fruits are for sale. You can spend the whole day at the farm's large grounds as there is also a park golf course and barbecue area.

[Kaga Fruit Land] [Map:A-6]  
 ♣ I-59-1 Yutaka-machi, Kaga City  
 ☎ 0761-72-1800  
 🌐 <http://www.furulan.com/eng/>  
 ⌚ 9:00 - 17:00 / Closed: 12/29 - 1/1 / 📦 Fruit-picking activities start at 1200 JPY  
 [Mapcode: 120 247 721\*17]



#### Kaga Coast Nature Trail

With a view of the Sea of Japan, this 4-km nature trail goes uphill and downhill with gentle curves. It starts at the Cape of Kasa, where a white lighthouse is located, and ends at Katano Beach. The cliffs eroded by the rough waves of the Sea of Japan, unusual rock formations, and caves create magnificent scenery. In contrast, it looks as if the sea blends with the sky when you stroll along a quiet sandy beach, and there are hills with plants and flowers to enjoy. If you walk down the trail while listening to the waves, you will feel as if you are part of nature. In the summer, you can enjoy swimming at Kuro-saki Beach or Katano Beach along the way.

[Kaga Coast Nature Trail] [Map:A-6]  
 ♣ From Kasa-no-misaki to Katano Kaigan, Kaga City  
 ☎ 0761-72-7892  
 🌐 [http://visitkaga.com/places\\_of\\_interest/hashitate/kasanomisaki.php](http://visitkaga.com/places_of_interest/hashitate/kasanomisaki.php)  
 [Mapcode: 120 336 818\*88]



#### Hot Springs

In the Kaga area, there are four hot spring towns within a radius of roughly 8 km: Awazu, surrounded by foothills; Katayamazu, which sits on the side of Lake Shibayama; Yamashiro, situated on a hill overlooking the countryside; and Yamanaka, located in the valley between the mountains.

You can drop by and use a communal bath called a *soyu* in each hot spring town. Why not visit the *soyu* in all four towns to discover their differences in terms of location and the quality of the springs?

[Yamanaka Onsen] [Map:B-6] [Mapcode: 899 570 214\*22]  
 🌐 <https://www.yamanaka-spa.or.jp/global/eng/>  
 [Yamashiro Onsen] [Map:B-6] [Mapcode: 120 133 261\*41]  
 🌐 <http://www.yamashiro-spa.or.jp/foreign/en>  
 [Katayamazu Onsen] [Map:B-6] [Mapcode: 1120 344 078\*77]  
 🌐 <http://www.katayamazuspa.or.jp/en>  
 [Awazu Onsen] [Map:B-6] [Mapcode: 120 293 387\*17]  
 🌐 <http://www.awazuonsen.com>



#### Daishoji Riverboat Ride

Daishoji, Kaga City is a small castle town that once prospered when it was a branch of the Kaga domain. The Daishoji Riverboat Ride allows you to feel the traditional air of the castle town on the former Daishoji River. The rowing houseboat moves slowly along the waterscape with seasonal colors to enjoy, such as spring cherry blossom and autumn leaves. From the boat, you can see the majestic Choryutei, an Important Cultural Property of Japan. While moving slowly along the water, you will enjoy scenery that cannot be viewed from a car window.

[Daishoji Riverboat Ride] [Map:A-6]  
 ♣ 97 Daishoji Hachiken-michi, Kaga City  
 ☎ 0761-72-6662  
 🌐 [http://visitkaga.com/places\\_of\\_interest/daishoji/cruise.php](http://visitkaga.com/places_of_interest/daishoji/cruise.php)  
 ⌚ 8:30 - 12:00 (April to November) / Closed: Tuesdays and Wednesdays / 📦 2000 JPY ~  
 [Mapcode: 120 187 650\*77]



#### There are many interesting places that are not listed in guidebooks.

He is familiar with the Kaga area and works as a coordinator at the tourist information center in JR Kaga Onsen Station. He provides overseas tourists with a variety of information, including a walking map of hot spring towns as well as accommodation and tourist facilities. If you have any inquiries about sightseeing in the Kaga area, please visit "KAGA Tabimachinet."

KAGA Tabimachinet [Map:B-6] [Mapcode: 120 222 883\*11] ☎ 0761-72-6678  
 🌐 <http://www.tabimati.net>

Alexandre Leroi a tourism coordinator.  
 From France and living in Yamashiro Onsen, Kaga City.



## KAGA Local Specialities

### Kaga's unique masterpieces incorp orate both tradition and a modern sensi bility

Kaga is home to the two traditional crafts of Kutani Ware, a representative Japanese porcelain decorated with colored pictures, and Yamanaka lacquerware, which is created by the woodturning technique using a potter's wheel. There are many sightseeing spots and stores related to these traditional crafts.

The area is also blessed with food ingredients thanks to its location that features natural diversity, including the sea, mountains, and rivers. The bounty of the sea, which is landed at Hashitate Port, has a strong brand. These days, many eateries are creating local specialty menus combining local ingredients with handicrafts.



#### Yamanaka Lacquerware

This lacquerware has a history of 400 years and is made through the best woodturning technique in Japan. Craftsmen also make lacquerware using resin, offering various items, ranging from luxuries to vessels for daily use.

#### Kutani Ware

This is a representative Japanese porcelain decorated with colored pictures. It originates from the pottery that was first made in around 1655 in the area that is now present-day Kaga City. It is distinguished by the use of gorgeous colors and innovative patterns.



#### Kaga Kani Gohan

This is a new local gourmet food featuring crab rice made from female snow crab, which was landed at the Hashitate fishing port in Kaga. It is served in specially selected Yamanaka lacquerware and Kutani Ware.



#### Kano-gani Crab

The snow crab from Ishikawa is branded as Kano-gani. The fishing season is from November to March. Since the Hashitate port in Kaga has excellent fishing grounds, Kano-gani which is landed there particularly has the reputation of being tasty.

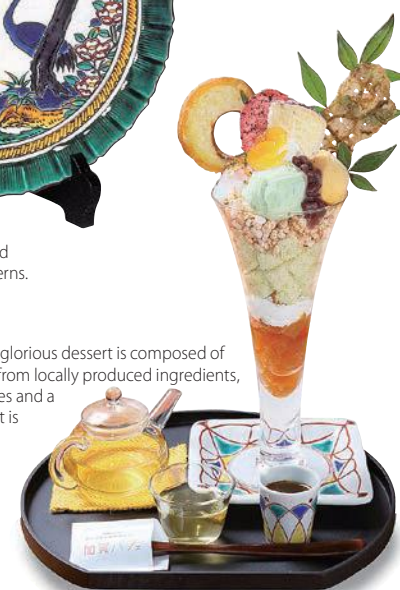


#### Komatsu Sio-Yakisoba

This palatable dish has been loved by locals since it was first created by a Chinese restaurant in Komatsu City around 60 years ago. The essential ingredients of this salt-based, simple-tasting noodle dish are thick noodles, bean sprouts, green onions, and carrots.

#### Kaga Parfait

This colorful and glorious dessert is composed of five layers made from locally produced ingredients, such as vegetables and a soft-boiled egg. It is served in both Kutani ware and Yamanaka lacquerware.







## AROUND KAGA FUKUI

# Drive on National Route 364 and visit popular sightseeing spots in Fukui

National Route 364 connects Yamanaka Onsen in the Kaga area to both Eiheiji-cho and Ohno City in Fukui Prefecture. The former contains Eiheiji, the headquarters of the Soto Zen school, while the latter is home to the Fukui Prefectural Dinosaur Museum. This means you have easy access to these places. If you continue driving towards the Sea of Japan, you will find more varied scenery.



### 1 Tojinbo Cliffs

Designated a Natural Monument of the country, Tojinbo is famous for the view where the raging waves of the Sea of Japan erode the cliffs. The dynamic columns of rock, which span around a kilometer, are a rare geological phenomenon. A trip on an excursion boat allows you to appreciate the beauty of the natural formations in each season.

📍 Anto, Mikuni-cho, Sakai City, Fukui  
☎ 0776-82-5515  
🌐 [https://www.fuku-e.com/lang/english/places\\_to\\_visit/beautiful\\_view.php](https://www.fuku-e.com/lang/english/places_to_visit/beautiful_view.php)  
[Mapcode: 264 240 132\*88]



### 2 Awara Onsen

Since opening in 1883, this historic hot spring town has been loved by many writers and artists. Even now, over a million people come here every year to enjoy taking a bath. The tranquil countryside contains a number of inns that stand in an orderly manner. Each one has its own original way of healing tired travellers, providing fresh seafood from the Sea of Japan and attentive service.

📍 Onsen, Awara City, Fukui  
☎ 0776-77-2040  
🌐 <https://www.fuku-e.com/lang/english/feature/feature-onsen.php>  
[Mapcode: 264 240 132\*88]



### 3 Echizen Coast Drive

Listed as a quasi-national park, Echizen Coast is characterized by unusual rock cliffs shaped by the erosive power of the wind and waves. The popular driving route features the Cape of Echizen and Tojinbo, both of which are included in the "100 Best Sunsets in Japan." Fresh seafood can be enjoyed throughout the year in the area surrounding the coast, including the famous snow crab in winter.

[Echizen-misaki Cape] [Mapcode: 560 220 469\*77]  
📍 Chigadaira, Echizen-cho, Nyu-gun County, Fukui  
☎ 0778-37-1234  
🌐 [https://www.fuku-e.com/010\\_spot/index.php?id=467&tab=0](https://www.fuku-e.com/010_spot/index.php?id=467&tab=0)



### 4 Urushi-no-sato/Urushi-no-sato Kaikan

The entire town of Kawada, Sabae City, Fukui Prefecture is called "Urushi no Sato" (the home of lacquer) and is known for the production of traditional Echizen lacquerware. Located in the town center, Urushi-no-sato Kaikan introduces the history and production process of lacquerware as well as selling it. You can also experience lacquerware painting.

📍 40-1-2 Nishibukuro-cho, Sabae City, Fukui  
☎ 0778-65-2727  
🌐 [https://www.fuku-e.com/lang/english/places\\_to\\_visit/traditional\\_craft.php](https://www.fuku-e.com/lang/english/places_to_visit/traditional_craft.php)  
[Mapcode: 63 138 006\*41]



### 5 The Fukui Prefectural Dinosaur Museum

Katsuyama City, Fukui Prefecture is known across the country as a gold mine for dinosaur fossils. It is home to one of the world's largest dinosaur-themed museums. The spacious exhibition spaces contain a display of impressive dinosaur skeletons, fossils and specimens, dioramas, and reconstructed models. Both children and adults can have a great time.

📍 51-11 Terao, Muroko-cho, Katsuyama City, Fukui  
☎ 0779-88-0001  
🌐 [https://www.fuku-e.com/lang/english/feature/feature-dinosaur\\_museum.php](https://www.fuku-e.com/lang/english/feature/feature-dinosaur_museum.php)  
[Mapcode: 240 886 544\*85]



### 6 Eiheiji Temple

Zen master Dōgen opened this Zen training monastery in 1244. Every year, 500,000 worshippers visit the tourist spot that represents Fukui Prefecture. Over 70 buildings stand in an orderly manner in the vast precincts of the temple, surrounded by cedar trees. In 2015, it was awarded two stars in the "Michelin Green Guide Japon."

📍 5-15 Shih, Eiheiji-cho, Yoshida County, Fukui  
☎ 0776-63-3102  
🌐 <https://www.fuku-e.com/lang/english/feature/>  
[Mapcode: 63 507 299\*71]



## Head to the foot of Mt. Hakusan, one of the three holy mountains in Japan

The vast Hakusan area extends from the coast of the Sea of Japan to Mt. Hakusan, which is one of the three holy mountains in Japan, along with Mt. Fuji and Mt. Tateyama.

The area is blessed with varied nature and beautiful landscapes, and strongly retains the unique traditional culture and lifestyle of each neighborhood.

The highlight of a 2-day, 1-night trip from Kanazawa to Hakusanroku (at the foot of Mt. Hakusan) is without a doubt the Hakusan Shirakawa-go White Road. It is a driving road that leads to the World Heritage Site Shirakawa-go. Before going there, let's visit various spots that encourage hands-on experience and participation from visitors; for example, you can experience Japanese traditional performing arts and crafts at cultural facilities, and children can have a great time at leisure facilities.

# HAKUSAN AREA

Located at the foot of the holy Mt. Hakusan

### ITINERARY

#### 1st day

- 1 Kanazawa  
↓  
Route 146 - Route 157 - Route 8 - Route 157 - Route 173  
52 min / 24.2km
- 2 Kutani Chinaware Ceramic Art Village  
↓  
Route 173 - Route 22  
7 min / 3.4km [Mapcode: 41 032 022\*60]
- 3 Ishikawa Zoo  
↓  
Route 22 - Route 157 - Route 103  
17 min / 11.3km [Mapcode: 41 035 625\*88]
- 4 Shirayama-Hime Shrine  
↓  
Route 103  
9 min / 1.1km [Mapcode: 41 046 741\*85]
- 5 Shishiku Highland  
↓  
Route 103 - Route 179 - Route 157  
26 min / 13.6km [Mapcode: 41 077 338\*71]
- 6 Tedor Gorge  
↓  
Route 178 - Route 157 - Route 360  
11 min / 7.7km [Mapcode: 507 616 497\*71]
- 7 Michino-eki Sena  
↓  
Route 360  
13 min / 7.4km [Mapcode: 507 438 158]
- 8 Hakusan Ichirino Onsen  
(Stay Overnight)

#### 2nd day

- 8 Hakusan Ichirino Onsen  
↓  
Noto Satoyama kaido Freeway  
42 min / 38.7km [Mapcode: 507 356 525\*11]
- 9 Hakusan Shirakawa-go White Road  
↓  
Route 232  
42 min / 38.7km [Mapcode: 549 008 181\*58]
- 10 Fukube Falls  
↓  
Route 249  
42 min / 38.7km [Mapcode: 950 878 562\*25]
- 11 Sanpoiawadake Trail  
↓  
Noto Satoyama kaido Freeway  
42 min / 38.7km [Mapcode: 549 040 236\*30]
- 12 Shirakawa-go  
[Mapcode: 549 049 156\*00]

\*Hakusan Shirakawa-go White Road closes during winter season: from the end of November to the early June.





**Enjoy a splendid view  
from the foot of the mountains,  
as well as the leisure activities**

## Drive through magnificent nature and feel the refreshing wind

*Your heart will beat fast when you drive from the plains to the foot of the mountains and see the mountains approaching. Streams from Mt. Hakusan feed into the Tedoru River, which then flows into the Sea of Japan. The water in the upper reaches of the river looks powerful due to the steep terrain.*



### Hakusan Ichirino Onsen [Map:C-6]

This hot spring area is located on the plateau at the entrance to the "Hakusan Shirakawa-go White Road." It can get crowded with skiers in winter.

📍 Ti-28, Ozoe, Hakusan City  
☎ 076-256-7846 (Hakusan Iyashinoyu Tenryo)  
🌐 <https://www.hot-ishikawa.jp/spot/20225>  
🕒 11:00 - 19:00 (Weekdays), 11:00 - 20:00 (Weekends) / Closed : Tuesdays (Next day when Tuesday is a public holiday) / 💰 650 JPY [Mapcode: 507 356 525\*11]



### Tedoru Gorge [Map:B-6]

The torrent of the Tedoru River has created a beautiful gorge, with its 20–30-meter-high cliff stretching for around 8 kilometers. In particular, sheets of spray from the powerful "Watagataki Falls" pour down to the gorge from the 32-meter-high cliff, as if cotton is dancing.

📍 Hakusan City  
☎ 076-255-5310 (Hakusan City Tourism information Center)  
🌐 [http://www.city.hakusan.lg.jp/otherdata/sightseeing/sightseeing/area\\_hakusan/index.html](http://www.city.hakusan.lg.jp/otherdata/sightseeing/sightseeing/area_hakusan/index.html) [Mapcode: 507 616 497\*71]



### The Ruins of Torigoe-jo Castle [Map:B-6]

These are the remains of a medieval castle that was built at the mountain summit at an altitude of 312 meters. A gate and stone walls, etc. have now been restored.

📍 Misaka-machi, Hakusan City  
☎ 076-274-9579 (Hakusan City Government office)  
🌐 <https://www.hot-ishikawa.jp/spot/5921> [Mapcode: 507 702 524\*30]



### Hakusan Scenic Wonders

### Fukube Falls [Map:C-6]

Located halfway along the Hakusan Shirakawa-go White Road, this 86-meter-high waterfall is the best spot on the road. The waterfall basin is very close to the car park, enabling you to see the water flowing down the cliff and crashing onto the exposed rock below.  
🌐 <http://hs-whiteroad.jp/en/sight-seeing/> [Mapcode: 950 878 562\*25]

### Shishiku Highland [Map:C-6]

This plateau surrounded by rich greenery has a gondola that will take you to the summit 650 meters above sea level, from where there is a grandstand view of the Kanazawa plain and the Sea of Japan. At the summit, it's also possible to experience a two-person paraglider with an instructor.

📍 RI-110 Yahata-machi, Hakusan City  
☎ 076-273-8449 (Park Shishiku)  
🌐 <https://www.hot-ishikawa.jp/english/kanko/20094.html> [Mapcode: 41 077 338\*71]



### Hakusan Shirakawa-go White Road [Map:C-6]

This 33.3-km road passes through Mt. Hakusan's majestic nature and connects Hakusan Ichirino Onsen and the World Heritage Shirakawa-go. Red leaves color the roadside in autumn and the sea of clouds may be seen in the morning on sunny days.

📍 Chugu, Hakusan City  
☎ 076-256-7341 (Hakusan Forest Road Office)  
🌐 <http://hs-whiteroad.jp/en/> [Mapcode: 549 008 181\*58]



### Shiramine Traditional Building District [Map:B-7]

The houses in this settlement were built during the Edo and Meiji periods. In Shiramine, which is one of the heaviest snowfall areas in Japan, the houses and streetscape capture the wisdom of people who live with the snow.

📍 Shiramine, Hakusan City  
☎ 076-259-2721  
🌐 [http://www.city.hakusan.lg.jp/otherdata/sightseeing/sightseeing/area\\_shiramine/index.html](http://www.city.hakusan.lg.jp/otherdata/sightseeing/sightseeing/area_shiramine/index.html) [Mapcode: 120 293 387\*17]





**Shirayama-Hime Shrine** [Map:C-6]

This is the head shrine for some 3,000 Shirayama Shrines that exist throughout Japan. The vast precincts contain huge old trees standing in line, with a solemn atmosphere in keeping with sanctuary.

- 📍 105 Sannomiya-machi, Hakusan City
- ☎ 0761-92-0680
- 🌐 <http://www.shirayama.or.jp/en/>
- 🕒 9:00 - 16:00 (April - October), 9:30 - 15:30 (November)
- 🚪 Closed : December - March 📄 Treasure Hall: 300 JPY
- [Mapcode: 41 046 741\*85]



**HAKUSAN**  
Tourist  
Facilities

**Asano Taiko Drum Exhibit** [Map:B-5]

This *taiko* drums exhibition and experience facility is operated by Asano Taiko, which manufactures and sells various *taiko* drums. You can experience "beating" the *taiko*, "seeing" a live *taiko* performance, and "making" a mini drum.

- 📍 586 Fukudome, Hakusan City
- ☎ 076-277-2771
- 🌐 <http://www.asano.jp/en/>
- 🕒 10:00 - 16:00 / Closed : Tuesdays / 📄 350 JPY
- [Mapcode: 41 243 487\*28]

**Ishikawa Zoo** [Map:B-6]

This zoo has created an environment that is similar to the original habitat of the animals through the arrangement of plants, rocks, ponds, etc. while making the best use of the natural topography. It showcases around 3,600 animals of 200 different species.

- 📍 600 Tokusan-machi, Nomi City
- ☎ 0761-51-8500
- 🌐 <http://www.ishikawazoo.jp>
- 🕒 9:00 - 17:00 (last admittance 16:30) / Closed : Tuesdays (Wednesday when Tuesday is a public holiday); 12/29 - 1/1 / 📄 830 JPY
- [Mapcode: 41 035 625\*88]

**Ishikawa Insect Museum** [Map:B-6]

Many insects from all over the world are on display. In the butterfly greenhouse, the largest on the Sea of Japan side, you can see butterflies flying all year round.

- 📍 Inu-3, Yahata-machi, Hakusan City
- ☎ 076-272-3417
- 🌐 <https://www.hot-ishikawa.jp/spot/6395>
- 🕒 9:30 - 17:00 (April to October) 9:30 - 16:30 (November to March) / Closed : Tuesdays, 12/29 - 1/1 / 📄 410 JPY
- [Mapcode: 41 076 816\*36]

**Kutani Chinaware Ceramic Art Village** [Map:B-6]

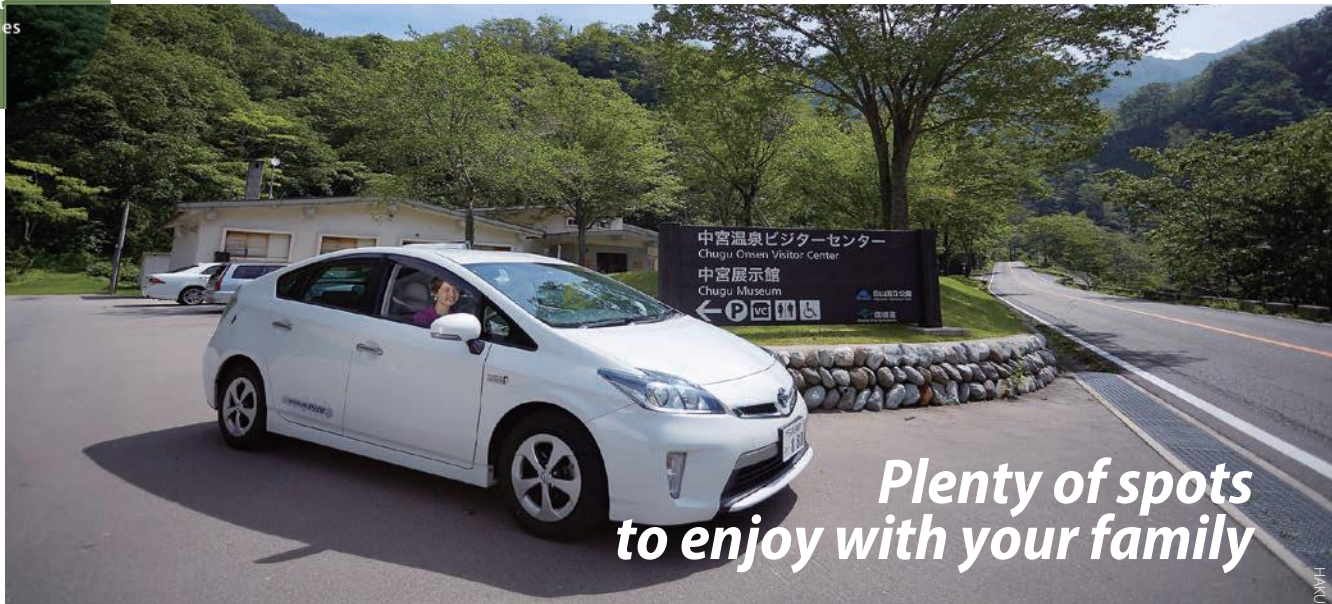
This facility offers information on Kutani Ware, Ishikawa's representative traditional craft. The "Nomi Kutani Ceramics Museum" on the premises offers hands-on classes, such as a potter's wheel and overglaze painting.

- 📍 22, Izumi-dai-minami, Nomi City
- ☎ 0761-58-6102
- 🌐 <http://www.kutaniyaki.or.jp/lang/>
- 🕒 9:00 - 17:00 / Closed : Open All Year Round
- 📄 Free Entry Fee
- [Mapcode: 41 032 022\*60]

**Hakusan Folk Museum** [Map:B-7]

A unique lifestyle has been developed to overcome the harsh winters at Hakusanroku (the foot of Mt. Hakusan). This outdoor exhibition facility has recreated this lifestyle.

- 📍 Ri 30, Shiramine, Hakusan City
- ☎ 076-259-2665
- 🌐 [http://www.city.hakusan.lg.jp/otherdata/sightseeing/sightseeing/area\\_shiramine/index.html](http://www.city.hakusan.lg.jp/otherdata/sightseeing/sightseeing/area_shiramine/index.html)
- 🕒 9:00 - 16:30 (last admittance 16:00) / Closed : Thursdays (Friday when Thursday is a public holiday); 12/11 - 3/9 / 📄 260 JPY
- [Mapcode: 507 044 209\*82]



*Plenty of spots  
to enjoy with your family*

**Michino-eki**

Equipped with rest facilities, these serve as an oasis for drivers, in addition to providing sightseeing information and selling local specialties.

**Michino-eki Megumi Hakusan** [Map:B-5]

A new Michino-eki (roadside station) which opened in April 2018.

- 📍 2183, Miyamaru-machi, Hakusan City
- ☎ 076-276-8931
- 🌐 <https://www.michi-no-eki.jp/stations/viewe/14178>
- 🕒 9:00 - 19:00 (April to October), 9:00 - 18:00 (November to February)
- 📄 Free Wi-Fi
- [Mapcode: 41 257 748\*77]

**Michino-eki Shirayama-San** [Map:C-6]

The observation room on the second floor overlooks the flow of the Tedoru River.

- 📍 200, Wasadani-machi, Nomi City
- ☎ 076-273-4851
- 🌐 <https://www.michi-no-eki.jp/stations/viewe/470>
- 🕒 9:00 - 17:30 📄 Free Wi-Fi
- [Mapcode: 41 076 000]

**Michino-eki Sena** [Map:C-6]

This is located conveniently close to the entrance of the Hakusan Shirakawa-go White Road.

- 📍 163-1 Tora, Seto, Hakusan City
- ☎ 076-256-7172
- 🌐 <https://www.michi-no-eki.jp/stations/viewe/476>
- 🕒 9:00 - 17:30 (April to October), 9:00 - 17:00 (November to March)
- [Mapcode: 507 438 158]

**Tedoru Fish Land** [Map:B-5]

Featuring a number of kid-friendly rides, this amusement park is popular with families. There are also game arcades and Ultraman stage shows, so you can have a great time, even when it rains.

- 📍 Tu 58, Ao-machi, Nomi City
- ☎ 0761-57-2211
- 🌐 <https://www.hot-ishikawa.jp/spot/5858>
- 🕒 10:00 - 17:00 / Closed : Wednesdays
- 📄 Free Entry Fee
- [Mapcode: 41 121 643\*47]





## Get out of the car and interact with nature and culture

The Hakusan area offers visitor experience and hands-on experience programs that are based on the area's rich nature and culture. As well as an exhilarating drive into the mountains, you can get out of the car and interact with nature by enjoying the outdoor leisure activities.



### Paragliding

Located at an altitude of 650 meters, the Shishiku Plateau is known as a sky sports mecca in Hokuriku due to its great wind. A gondola will take you to a clean and well-maintained take-off zone at the summit.

In the paragliding experience program, you can enjoy a tandem flight with an instructor for around 10 to 15 minutes. Glide through the air to feel a refreshing wind and see the Sea of Japan and the alluvial fan which the Tedor River flows into.

[Paragliding School at Sky Shishiku] [Map:C-6]  
 ♣ 109 Yahata-machi, Hakusan City  
 ☎ 076-273-2320  
 🌐 <http://www.city.hakusan.lg.jp/otherdata/sightseeing/activities/>  
 ⌚ 9:00 - 16:00 / 📄 10000 JPY ~  
 [Mapcode: 41 076 654\*74]



### Cycling

The Tedor Canyon Road is a cycling road, which runs around 20 km each way from Juhachigawara Park, located on the right bank of the Tedor River, to Michi-no-Eki Sena. Enjoy a leisurely bicycle trip on a gently undulating hill with a view of Mt. Hakusan, which looks different when you cycle. Also, don't miss out the Tedor Gorge and the Watagataki Falls. Hakusan City Tourism League and Michino-eki Shirayamasan rent out both normal bicycles and electric ones.

[Tedor Canyon Road / Cycle hire] [Map:C-6]  
 ♣ 200 Wasadani-machi, Nomi City  
 ☎ 076-273-4851  
 🌐 <http://www.city.hakusan.lg.jp/otherdata/sightseeing/activities/index.html>  
 [Mapcode: 41 076 000]



Photo: [Yoshioka-enchi Park]  
 [Map:B-2] [Mapcode: 507 763 299\*63]

**Majestic nature close by.** Hakusan City is a fantastic area featuring mountainous landscapes such as the Hakusan Shirakawa-go White Road and Tedor Gorge, as well as the beautiful view from Yoshioka-enchi Park at Hakusan-roku. You can also enjoy mountain climbing and hiking at Mt. Hakusan. If you are looking for souvenirs, her recommendation is plum wine, which is made using Mt. Hakusan subsoil water and can only be bought here.

**Harriet Simmons** | From England and living in Hakusan City.



### Kutani Ware Experience

Nomi Kutani Ceramics Museum exhibits Kutani Ware, one of the traditional crafts that represent Ishikawa, and runs a number of Kutani Ware workshops.

During the painting experience, staff will provide you with a white porcelain vessel, which you decorate with your original design using traditional paints. During the ceramics making experience, you can create a vessel in the shape of your choice, either by hand or using a potter's wheel. In addition to appreciating Kutani Ware, you will have fun creating it with your own hands.

[Nomi Kutani Ceramics Museum] [Map:B-6]  
 ♣ 9, Izumi-dai-minami, Nomi City  
 ☎ 0761-58-6300  
 🌐 <http://www.kutaniyaki.or.jp/lang/index.html>  
 ⌚ 9:00 - 17:00 (last admittance 16:30) / Closed: Mondays (Tuesdays when Monday is a public holiday); 12/29 - 1/3 / 📄 2000 yen  
 [Mapcode: 41 032 015\*74]



### Hot Springs

The Hakusan area is blessed with a gift from the holy Mt. Hakusan and it is dotted with unique hot springs. Ichirino Onsen, located at the entrance of the Hakusan Shirakawa-go White Road, is characterized by its transparent, colorless spring water, which has a slight scent of sulfur. You can stay in the accommodation, which is proud of these hot springs, or just drop by the hot spring center, Tenryou, without spending the night. Shiramine Onsen is surrounded by the mountains and has a public hot spring bath, Shiramine Onsen Soyu. The spring water has a reputation for making the skin as smooth as silk after a bath.

[Hakusan Iyashinoyu Tenryou] [Map:C-6]  
 [Mapcode: 507 356 525\*11]  
 🌐 <https://www.hot-ishikawa.jp/spot/20225>  
 [Shiramine Onsen Soyu] [Map:B-7]  
 [Mapcode: 507 015 496\*36]  
 🌐 <https://www.hot-ishikawa.jp/spot/5569>



### Trekking / Hiking

There are a number of hiking courses at Mt. Hakusan, which remains untouched, including the fields covered by alpine flowers and primeval beech forests. If you wish to enjoy casual trekking in nature rather than full-scale mountaineering, we recommend trekking in the vicinity of Ichinose Visitor Center in Shiramine, the gateway to the Mt. Hakusan trail. It takes around 50 minutes to make a round trip from the Visitor Center to the Hakusan Observatory, where you can enjoy a great view.

[Ichinose Visitor Center] [Map:C-7]  
 ♣ 35-1, Shiramine, Hakusan City  
 ☎ 076-259-2504  
 🌐 <http://www.city.hakusan.lg.jp/otherdata/sightseeing/activities/index.html>  
 Season: 5/1 - 11/5 / ⌚ 8:45 - 17:00 / 📄 Free Entry Fee  
 [Mapcode: 791 714 342\*71]



### Soba-Making Experience

Torigoe in the Hakusan area is known for its production of *soba* (buckwheat). It does this by taking advantage of the cool climate of the mountainous area. In the fall, the fields are covered in white buckwheat blossoms.

Niwaka Kobo is a community-based facility that sells locally harvested fresh agricultural products, as well as the processed food that is made with them. It also offers a *soba*-making experience, where you make *soba* under a local master's guidance and eat it on site. Your *soba* will taste exceptional because you made it yourself.

[Niwaka Kobo] [Map:B-6]  
 ♣ To 3-7, Mitsuya-no-machi, Hakusan City  
 ☎ 076-255-5930  
 🌐 <https://www.hot-ishikawa.jp/spot/6075>  
 ⌚ 10:00 - 17:00 / Closed: Irregular / 📄 2000 JPY ~  
 [Mapcode: 507 557 390\*03]



## HAKUSAN Local Specialities

### Edible Wild Plants

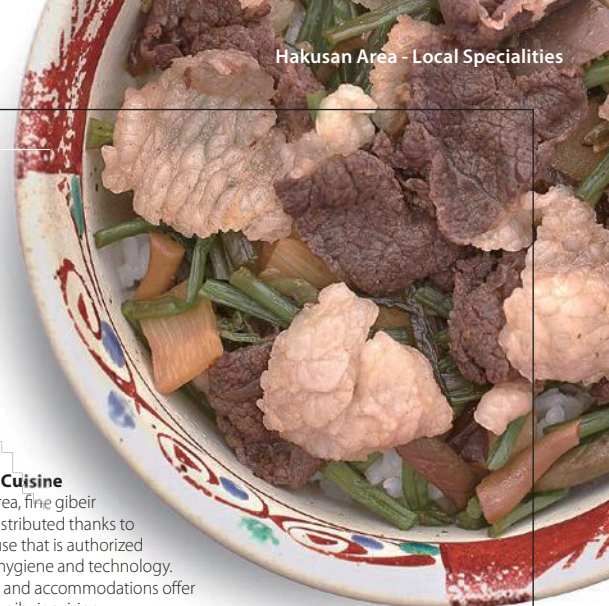
A wide variety of edible wild plants grow naturally

in the mountainous area of Hakusan. You can boil, stir-fry, or deep-fry them to enjoy their bitter taste, which makes you feel the arrival of spring.



### Gibeir (Game) Cuisine

In the Hakusan area, fine gibeir (game) meat is distributed thanks to the slaughterhouse that is authorized both in terms of hygiene and technology. Local restaurants and accommodations offer healthy and tasty gibeir cuisine.



## Tastes that have been nurtured and loved by people living in the mountains

In spring, the snow that piles up on the holy Mt. Hakusan turns into water and feeds into the Tedor River. It also soaks deep underground into the forest, the bottom of the river, and rice fields, and becomes a clean subsoil water for the people. The Hakusan area offers rice and vegetables that have been grown with clear water as well as tasty ingredients, such as edible wild plants, mushrooms, and river fish. Its rustic food culture is unique to a mountain village and conveys a new feeling. This food experience will make you feel purified from the inside of your body as you bite into it. Only the people who have visited this place will have the chance to appreciate the excitement of this trip.



### Hakusan Hyakuzen

At the foot of Mt. Hakusan, local restaurants and accommodations offer Hakusan Hyakuzen, the regional cuisine using local ingredients.

### Tochimochi

Horse chestnuts used to be an important staple food in the Shiramine area due to the limited number of rice fields. Tochimochi is a remnant of that food culture. It is made by pounding glutinous rice with horse chestnuts. Red bean paste is then put into the rice cakes.



### Katadofu

Tofu is generally soft, but this is a hard tofu that has been firmly compressed. People living at the foot of Mt. Hakusan have been consuming it since the olden days. Eat a slice of it and enjoy its rich taste.



### Char

The common way of eating the river fish, such as char and trout, that have grown in the pure water from Mt. Hakusan is to grill it over a charcoal fire.



### Soba

The Hakusan area, where soba (buckwheat) is grown, is nicknamed "Soba Way" because of the large number of restaurants that serve homemade soba.







# Drive along the Hakusan Shirakawa-go White Road

AROUND HAKUSAN

## GIFU / NAGANO

The Hakusan Shirakawa-go White Road connects Hakusan City, Ishikawa Prefecture with Shirakawa-go, Gifu Prefecture. The driving route is a tourist attraction in itself, with a fantastic view of Mt. Hakusan. Attractive sightseeing spots await in both Gifu and Nagano Prefectures, at the end of the 33.3-km drive.



### 1 Shirakawa-go World Heritage Site

There are more than 100 small and large gassho-style houses in Shirakawa-go. While the landscape is regarded as the "home of Japan," people continue to live normally there. Take a look inside the gassho-style houses to learn about their lifestyle that dates back to the olden days, as well as their wisdom of life.

📍 Ogi-machi, Shirakawa Village, Gifu  
☎ 05769-6-1013  
🌐 <http://travel.kankou-gifu.jp/en/see-and-do/2/>  
[Mapcode: 549 019 514\*41]



### 2 Takayama/Hida Furukawa

Takayama, which once prospered as a samurai and merchant town, retains old townscapes from around the 17th century. The city center is full of souvenir shops, homeware stores, cafés, etc. Hida beef gourmet food is also popular here. In Hida Furukawa, you can stroll along the Seto River with white-walled storehouses in the background or go on a tour, such as "SATOYAMA Cycling," to visit the beautiful countryside.

📍 Kamiichino-machi, Takayama City, Gifu  
☎ 0577-32-3333  
🌐 <http://travel.kankou-gifu.jp/en/see-and-do/6/>  
[Mapcode: 191 196 592\*06]



### 3 Rail Mountain Bike "Gattan Go!!"

You can ride a mountain bike along the rails of a former railroad (from early April to November). Experience a thrilling course with tunnels and bridges, while feeling the sounds and vibrations of the rails, which you would not feel in normal cycling.

📍 Azumo, Kamioka-cho, Hida City, Gifu  
☎ 090-7020-5852  
🌐 <http://travel.kankou-gifu.jp/en/see-and-do/93/>  
[Mapcode: 191 832 845\*11]



### 4 Okuhida Onsen

With the 3,000-meter-high Japan Northern Alps in the background, Okuhida-Onsen is a vast hot spring resort comprising the five towns of Hirayu, Shinhirayu, Fukuji, Tochio, and Shinhota. You can bathe in a secret hot spring or relax in an open-air bath at a Japanese inn. The resort also has easy access to the Shinhota Ropeway.

📍 Okuhida Onsen-go, Takayama City, Gifu  
☎ 0578-89-2614  
🌐 <http://travel.kankou-gifu.jp/en/see-and-do/4/>  
[Mapcode: 620 887 153\*28]



### 5 Kamikochi

Kamikochi is the crown jewel of the Japanese Alps. The scenic area is a basin at 1500 meters elevation. The Alps rise an additional 1500 meters from there, creating a stunningly magnificent background with the beautiful aquamarine Azusa River in the foreground. One of the best ways to enjoy Kamikochi is to spend the night and take an uncrowded evening or early morning stroll.

📍 Kamikochi, Matsumoto City, Nagano  
☎ 0263-95-2606  
🌐 <http://www.go-nagano.net/shisetsu-detail?shisetsuid=2016001>  
[Mapcode: 405 873 712\*00]



### 6 Shinhota Ropeway

This is the only place in Japan with a two-story gondola. It will take you to the world above the clouds, at an altitude of 2,156 meters. The observation deck has a magnificent 360-degree panoramic view of the Japan Northern Alps. You can also appreciate the beauty of the four seasons in Japan, including seasonal flowers from April to September and autumn leaves in October.

📍 Shinhota, Okuhida-Onsen-go, Takayama City, Gifu  
☎ 0578-89-2252  
🌐 <http://travel.kankou-gifu.jp/en/see-and-do/3/>  
[Mapcode: 898 114 822\*88]



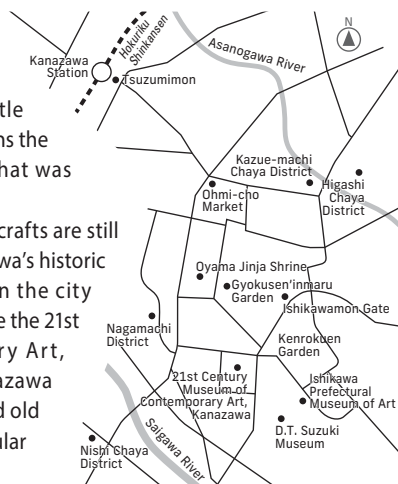
# KANAZAWA AREA

Ishikawa sightseeing highlights

Ishikawamon Gate

## The city with *samurai* spirit and castle town's character

Kanazawa, which flourished as a castle town under the Kaga domain, still retains the historic townscape and landscape that was designed during the feudal period. A number of sophisticated traditional crafts are still alive in people's everyday lives. Kanazawa's historic heritages are gathered compactly in the city center. The city's new attractions include the 21st Century Museum of Contemporary Art, Kanazawa, and the redeveloped Kanazawa station. With a combination of new and old cultures, Kanazawa has become a popular tourist destination in the country.



### Kenrokuen Garden

Developed by successive lords of the Kaga domain over a long period of time, the garden features beautiful scenery every season.

📍 1-4 Kenrokumachi, Kanazawa City  
☎ 076-234-3800  
🌐 <http://www.pref.shikawa.jp/siro-niwa/kenrokuen/e/>  
[Mapcode: 41 529 086\*82]



### Kanazawa Castle

Kanazawa Castle, in which the Maeda family used to reside, is now maintained as a park. These buildings have survived since the Edo period.

📍 1-1 Marunouchi, Kanazawa City  
☎ 076-234-3800  
🌐 <http://www.pref.shikawa.jp/siro-niwa/kanazawajou/e/>  
[Mapcode: 41 529 465\*00]



### Chaya Districts

Kanazawa has three hospitable chaya (teahouse) districts, where *geigi* (*geisha*) perform dance and music in a teahouse drawing room.

📍 Higashiyama, Kanazawa City  
🌐 <https://visitkanazawa.jp/mustoplace/touristspot/area4/1>  
[Mapcode: 41 560 309\*17]



### Nagamachi District

*Samurais* of the Kaga domain used to live in this district, with the atmosphere making you feel as though you've travelled back in time.

📍 Nagamachi, Kanazawa City  
🌐 <https://visitkanazawa.jp/mustoplace/touristspot/area2/1>  
[Mapcode: 41 528 223\*33]



## INFORMATION

### Kanazawa in Brief

Japan is a small country, but each region has its own unique culture. Kanazawa, the biggest city in the Hokuriku region, is located in the middle of Japan's main island. It's easy to get to from both Tokyo and Osaka by road or rail.



### Useful Website for Travelers

**Tourism Ishikawa (Official Ishikawa Travel Guide)**

<https://www.hot-ishikawa.jp/english/>

**Kanazawa Tourist Information Guide**

<https://visitkanazawa.jp/>

**West Japan Railway Company**

<https://www.westjr.co.jp/global/en/>

**Komatsu Airport**

[http://www.komatsuaairport.jp/index\\_en.html](http://www.komatsuaairport.jp/index_en.html)

**Chubu Centrair International Airport, Nagoya**

<https://www.centrair.jp/en/>

**Kansai International Airport**

<https://www.kansai-airport.or.jp/en>

**Narita International Airport**

<https://www.narita-airport.jp/en>

**Haneda Airport**

<http://www.haneda-airport.jp/en/>

**JNTO (Japan National Tourist Organization)**

<https://www.jnto.go.jp/>

**Japan Tourism Agency**

<http://www.mlit.go.jp/kankocho/en/>

**Central Nippon Expressway Company (NEXCO CENTRAL)**

<http://global.c-nexco.co.jp/en/>

**Drive Ishikawa**

<http://www.driveishikawa.info/>

### Getting to Kanazawa

By plane	Tokyo	1h	Komatsu	40min	Kanazawa
By train	Tokyo	2h30			Kanazawa
By bus	Tokyo	7h30			Kanazawa
By train	Osaka	2h30			Kanazawa
By bus	Osaka	1h	Kyoto	4h	Kanazawa
By train	Nagoya	2h30			Kanazawa
By bus	Nagoya	4h			Kanazawa

### Access to Kanazawa by car

🚗 Tokyo I.C. ➔ Kanazawa Nishi I.C. / 568km (353miles)  
 🚗 Narita International Airport ➔ Kanazawa Higashi I.C. / 552km (343miles)  
 🚗 Kansai International Airport ➔ Kanazawa Nishi I.C. / 343km (213miles)  
 🚗 Nagoya I.C. ➔ Kanazawa Higashi I.C. / 243km (151miles)  
 🚗 Kyoto Higashi I.C. ➔ Kanazawa Nishi I.C. / 246km (153miles)

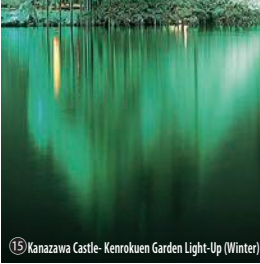
### FOR EMERGENCY

• Police: Counseling Line for Foreigners with questions regarding crime and safety  
 • Tel: 076-225-0555  
 • Open: Monday to Friday, 9:00-17:00 (excluding 29, Dec. - 3, Jan. and national holidays)  
 • Languages: English, Spanish, Russian, Portuguese, Chinese



# ISHIKAWA EVENT SCHEDULE

	JANUARY	FEBRUARY	MARCH	APRIL	MAY	JUNE	JULY	AUGUST	SEPTEMBER	OCTOBER	NOVEMBER	DECEMBER
Noto Area	● <b>1Sechu Jumbo Kaki Matsuri</b> You can taste chargrilled Noto oysters.	● <b>Wajima Ae no Kaze Fuyu Matsuri</b> Restaurants in the city offer special menus, prepared with local ingredients.		● <b>Wakura Onsen Haru Hanabi</b> Fireworks in spring, rarely seen across the country.	● <b>2Seihakusai</b> A festival featuring Japan's biggest floats that appear in the street.		● <b>Monterey Jazz Festival in Noto</b>  ● <b>3Abare Festival</b> This is the first in a series of Kiriko festivals held across the Noto Peninsula.	● <b>Wakura Onsen Natsu Hanabi</b> A display of around 3,000 fireworks in Wakura Onsen.		● <b>4Sirayone Senmaida Light-Up -Aze no Kirameki- (Oct. – Mar.)</b> Rice terraces are illuminated with 25,000 LED light bulbs.	● <b>Wajima Kani Matsuri</b> Crabs from Wajima Port are cooked for you to taste there, and then.	● <b>Hatagoiwa, Kyu-Fukuura Todai Light-Up (Dec. – Feb.)</b>
				● <b>Chirihama Sazo Tenji (May. – Oct.)</b> Statues made of sand are exhibited near Chirihama Rest House.	● <b>Wajima Gojinjo Daiko (free performance) (Apr. – Nov.)</b> at Kiriko Lantern Museum							
Kaga Area	● <b>Yamanaka-za Odori Hajime Kansho-kai</b> The first stage of the year to be held on New Year's Day.			● <b>Natadera "Haru no Yoru Akari"</b> Natadera Temple is beautifully illuminated for around a week.	● <b>Otabi Matsuri</b> A historical festival featuring <i>kabuki</i> plays performed by children on a float.		● <b>Furusato Yamanaka Natsu Matsuri</b> Visit stalls at this nostalgic summer festival held for around a month. ● <b>Yamashiro Daidengaku</b> A traditional performing art, Dengaku will be played.	● <b>7Katayamazu Onsen Noryo Hanabi Matsuri</b> Fireworks are launched every day for a month at Katayamazu Onsen. ● <b>8Guzu Yaki Matsuri</b> People burn a symbol of disaster called Guzu at this summer festival.	● <b>9Yamanaka Onsen Koikoi Matsuri</b> A bustling festival featuring <i>mikoshi</i> , <i>o-jishi</i> , singing, and dancing.	● <b>10Natadera "Aki no Yoru Akari"</b> Illuminations are held for around two weeks in the season of autumn leaves.	● <b>11Onabe no Furumai (Nov. – Mar.)</b> Miso soup made with crab and local ingredients is offered.	
				● <b>5Yamanaka Onsen "Kakusen-kei Kawadoko" (Apr. – Oct.)</b> There will be a small seating area along the river in Kakusenkei Gorge.	● <b>6Daishoji Kawanagashi Fune (Apr. – Oct.)</b> A slow journey by houseboat to enjoy the scenery of the castle town.							
Hakusan Area							● <b>Hakusan Yama Biraki</b> It is possible to climb Mt. Hakusan from July 1st.  ● <b>Hakusan Kokusai Taiko Ekusutajia</b> You can see a Japanese drum performance at this event.	● <b>Torigoe Ikko Ikki Matsuri</b> 10,000 candles are lit along with fireworks in the mountainous area.		● <b>12Horai Matsuri</b> A historical festival where a <i>mikoshi</i> is carried, along with <i>shishimai</i> dance.		
						● <b>Hakusan Shirakawa-go White Road Opening</b>						
Kanazawa Area	● <b>13Fire-fighters New Year's Event</b> A ladder climbing performance by members of the fire brigade.  ● <b>Winter Evening Noh Theater (Jan. – Mar.)</b> Noh performance at Ishikawa Prefectural Noh Theater.	● <b>14Setsubun Festival</b> You can see dance performances by geigi from Higashi Chaya District.  ● <b>15Kanazawa Castle- Kenrokuen Garden Light-Up (Winter)</b> Illuminations at Kanazawa Castle Park and Kenrokuen Garden.			● <b>Kanazawa Castle- Kenrokuen Garden Light-Up (Spring)</b>  ● <b>Hyakumangoku Kashi Hyakko ten</b> Japanese confectionery making workshop and sales demonstration.	● <b>Kanazawa Hyakumangoku Festival</b> Kanazawa's grandest festival related to Maeda Toshiie.  ● <b>16Hyakumangoku Takigi Noh performance</b>	● <b>Kanazawa Asanogawa Enyukai: Shiraito Kawadoko</b> There will be a seating area along the Asano River.  ● <b>17Kanazawa Geigi Okeiko Fukei Kengakukai (Jul. – Aug.)</b> You can see Kanazawa geigi practicing. ● <b>Evening Noh Theater (Jul. – Aug.)</b>	● <b>18Kanazawa Castle- Kenrokuen Garden Light-Up (Summer)</b>  ● <b>Kanazawa JAZZ STREET</b>  ● <b>Craft Beer Kanazawa</b>	● <b>Sake marche</b>  ● <b>Kanazawa Marathon</b>  ● <b>Kanazawa Geigi no mai (Oct. – Mar.)</b> You can see dance performances by Kanazawa geigi.	● <b>19Kanazawa Castle- Kenrokuen Garden Light-Up (Autumn)</b>		







## 21st Century Museum of Contemporary Art, Kanazawa

Housing a collection of contemporary art, the new top attraction in the art and craft city, Kanazawa, attracts attention from both home and abroad.

📍 1-2-1 Hirosaka, Kanazawa City  
☎ 076-220-2800  
🌐 <https://www.kanazawa21.jp/en/>  
[Mapcode: 41 499 849\*71]



## D.T. Suzuki Museum

This facility introduces the thoughts and background of D. T. Suzuki, a world-renowned Buddhist philosopher who was born in Kanazawa and introduced "Zen" to the West. Take a seat in the "Contemplative Space" and watch the "Water Mirror Garden," where you will experience the feeling of deeply facing your inner self.

📍 3-4-20, Honda machi, Kanazawa City  
☎ 076-221-8011  
🌐 <https://www.kanazawa-museum.jp/daisetz/english/>  
[Mapcode: 41 499 530\*71]



## Ohmi-cho Market

Boasting about 180 vendors selling a wide variety of products including fresh seafood and local vegetables, this "Kanazawa's kitchen" has been supporting the gastronomic culture of the city for nearly 300 years.

📍 50 Kami-Omicho, Kanazawa City  
☎ 076-231-1462  
🌐 <https://visitkanazawa.jp/mustgoplace/touristspot/area3/2>  
[Mapcode: 41 559 182\*44]



## 1 Ono District

Ono-machi in the northern part of Kanazawa City prospered as a port town during the Edo period. Also known for its soy sauce production, the storehouses dotted around bring a quaint atmosphere to the townscape.

📍 2-39 Ono, Kanazawa City  
☎ 076-267-0121  
🌐 <https://visitkanazawa.jp/mustgoplace/touristspot/area6/5>  
[Mapcode: 41 672 899\*11]



## 2 Yuwaku Onsen

This small hot spring town is located in a green mountainous area, about 20 minutes by car from Kanazawa City center. The *soyu* (public bathhouse) allows you to have a dip in a hot spring without having to stay at a *ryokan*.

📍 1-1, Yuwaku-machi, Kanazawa City  
☎ 076-235-1380 [Public bath Shirasagi-no-yu]  
🌐 <http://yuwaku.gr.jp/en/>  
[Mapcode: 549 811 788\*33]



## 3 Kanazawa Yuwaku Edomura

This open-air museum is located in the hot spring area of Yuwaku Onsen, surrounded by mountains, in the suburbs of Kanazawa. It preserves and exhibits buildings from the Edo period (1603-1868).

📍 35-1 Yuwaku-araya-machi, Kanazawa City  
☎ 076-235-1267  
🌐 <https://www.kanazawa-museum.jp/edomura/english/>  
[Mapcode: 549 841 423\*17]

# AROUND KANAZAWA

With its historical sites gathered close together, a rental car will increase your options on your Kanazawa trip. Take advantage of the location to reach the sea and mountains in 30 minutes by car and visit attractive sites in the suburbs.



## 9 Ishikawa Forest Park

Covering a total area of 1,150 hectares, this is one of the biggest forest parks in Japan. There are various facilities such as a boat pier, zoo, tennis court, and barbecue site.

📍 E 14, Tsubata, Tubata-machi, Kahoku County  
☎ 076-288-6449  
🌐 <https://www.hot-ishikawa.jp/spot/4609>  
[Mapcode: 122 661 446\*82]



## 3 Nishida Kitaro Museum of Philosophy

This museum introduces the philosophy and life of Japan's leading philosopher, Nishida Kitaro. The building was designed by world-famous architect Tadao Ando. Its intricate, maze-like, and complicated space will encourage you to "think."

📍 1-1, Uchihisumi, Kahoku City  
☎ 076-283-6600  
🌐 <http://www.nishidatetsugakukan.org>  
[Mapcode: 336 158 318\*88]



## 4 Kita Family Museum

The Kita family were wealthy farmers who were appointed to manage and supervise farming villages in the Kaga domain. The fascinating main building and the front gate were built at the beginning of the 19th century and are listed as Important Cultural Properties of Japan.

📍 3-8-11 Honmachi, Nonoichi City  
☎ 076-248-1131  
🌐 <https://www.hot-ishikawa.jp/spot/5187>  
[Mapcode: 41 404 426\*14]



## 5 Michino-eki Uchinada Sunset Park

This Michi-no-Eki is situated in a scenic spot, from where you can enjoy views of the Sea of Japan, Kahokugata Lagoon, Mt. Hakusan, and Mt. Tateyama. The adjacent Sunset Bridge Uchinada is illuminated at night.

📍 1-4-1, Daigaku, Uchinada-machi, Kahoku County  
☎ 076-254-6133  
🌐 <https://www.michi-no-eki.jp/stations/viewe/483>  
[Mapcode: 41 858 666\*71]



## 6 Yume Milk Kan at Hori Farm

Located in the vast grounds of a farm, this shop sells a popular soft-serve ice cream made using plenty of freshly squeezed milk.

📍 243 Kosei, Uchinada-machi, Kahoku County  
☎ 076-255-1369  
🌐 <https://www.hot-ishikawa.jp/spot/21018>  
[Mapcode: 41 891 779\*74]



## 7 Kahokugata Reclaimed Land - Sunflower Village

The 23,000-m<sup>2</sup> site is awash with sunflowers from late July to early August every year.

📍 Koto, Tsubata-machi, Kahoku County  
☎ 076-288-4424  
🌐 <https://www.hot-ishikawa.jp/spot/6335>  
[Mapcode: 336 007 599\*14]



# IN AND AROUND ISHIKAWA



## ISHIKAWA road trips

Guide to Car Rental Journey

### LEGEND

- National road
- Prefectural road
- Expressway
- Toll road
- Expressway (free)
- Main road
- JR network
- Hokuriku (JR) Shinkansen
- Local train
- Airport
- Michino-eki (rest area, toilets, catering)
- View point
- Spa resort (onsen)
- Temple
- Shrine
- Beach
- Golf course
- Ski resort
- Boat ride
- Kiriko Festival
- Sakura view spot
- Autumn leaves view spot

Sea of Japan

**Ishikawa Prefecture**  
石川県

**Hokuriku Expressway**  
北陸自動車道

**Kaga Area**

**Fukui Prefecture**  
福井県

**Kanazawa Area**

**Hakusan Area**

**Hakusan Shirakawa-go White Road (Toll Road)**  
白山白川郷ホワイトロード

**Tokai-Hokuriku Expressway**  
東海北陸自動車道

**Gokayama**

**Shirakawago**

**Takayama Kiyomi Expressway**  
高山清見道路

**Toyama Prefecture**  
富山県

**Gifu Prefecture**  
岐阜県

**Takayama**

**Noto Area**

**Notojima Island**  
能登島

**Toyama Bay**

**Hokuriku Expressway**  
北陸自動車道

**Toyama Prefecture**  
富山県

**Gifu Prefecture**  
岐阜県

**Takayama**



# ISHIKAWA road trips

Guide to Car Rental Journey



**Ishikawa Prefecture Tourism League**  
Kuratsuki, Kanazawa City, Ishikawa Prefecture,  
920-8580 Tel.076-201-8110  
<https://www.hot-ishikawa.jp/english/>



はとと石川

**Toyama Prefectural Tourism Association**  
Sogawa, Toyama City, Toyama Prefecture, 930-8501  
Tel. 076-441-7722  
<https://foreign.info-toyama.com/en/>

**Fukui Prefectural Tourism Federation**  
Matsumoto, Fukui City, Fukui Prefecture, 910-0003  
Tel. 0776-23-3677  
<https://www.fuku-e.com/lang/english/>

**Gifu Prefecture Tourism Federation**  
Yabuta-minami, Gifu City, Gifu Prefecture, 500-8384  
Tel. 058-275-1480  
<http://travel.kankou-gifu.jp/en/>

**Nagano Prefecture Tourism Association**  
Habashita, Minami-Nagano, Nagano City,  
Nagano Prefecture 380-8570  
Tel. 026-734-7205  
<http://www.go-nagano.net>

Printed: March 2019