



FACTORBIKES.COM

LANDO^{XC}



Lando FS R1 Manual

INTRODUCTION

Congratulations on the purchase of your FACTOR product. Please review thoroughly the following instructions and only follow them for correct operation and use. Should you fail to follow the following instructions and warnings, this could result in damage of the product, damage to the bicycle and in severe situations cause possible injury and or death.

Since specific tools and bicycle service experience is required for proper assembly

LIMITED LIFETIME WARRANTY ON BICYCLES AND FRAMESETS

Subject to the following limitations, terms and conditions, Factor warrants to the original owner for the lifetime of the original owner of each new Factor bicycle or frameset that the bicycle frame or frameset is free of defective materials and workmanship.

The lifetime limited warranty is conditioned upon the bicycle being operated under normal conditions and use, and properly maintained in accordance with the owner's handbook (as supplied with the Factor bicycle).

This lifetime limited warranty does not apply to paint/finish, any Factor components considered subject to normal wear and tear or any third-party components attached to the bicycle or frameset, such as wheels, drive train, brakes, or any suspension related parts or components.

Any Factor components considered subject to normal wear and tear are covered under a limited one (1) year warranty. The duration of this limited warranty shall be one (1) year, commencing from the date the customer takes possession of the bicycle.

Factor components considered subject to normal wear and tear will be listed in the Technical Supplement and/or User Manual provided with the bicycle. Any and all third party components included with or installed on Factor bicycles are subject to any manufacturers' guarantee applicable to those components, as specified by the manufacturer.

Additional Conditions: This lifetime limited warranty is made solely to the original owner of this new Factor bicycle or frameset, and shall remain in force only as long as the original owner

installation, it is recommended that the product be assembled by a qualified bicycle mechanic. FACTOR BIKES assumes no responsibility for damages or injury due to improper assembly and installation of the product(s).

To qualify for FACTOR'S LIMITED LIFETIME WARRANTY please visit www.factorbikes.com and register your product(s) within 15-days of purchase.

retains ownership of the Factor bicycle. This lifetime limited warranty is not transferable.

If the bicycle is purchased as a gift, the original recipient of the gift is considered to be the original owner for the purposes of this lifetime limited warranty.

In order to exercise your rights under this lifetime limited warranty, the bicycle or frameset must be presented to Factor or an authorized Factor dealer, together with a receipt, bill of sale, or other appropriate written proof of purchase which identifies the bicycle or frameset by serial number.

Exclusions & Limitations:

The above warranty, or any implied warranty, does not cover:

Modifications from the original condition except such modifications which are necessary to comply with specific national legislative requirements that may apply in the country of use.

Normal wear and tear.

Use of the bicycle for abnormal and/or commercial activities, or for purposes other than those for which the bicycle was designed. Damage caused by failure to follow the instruction manual.

Paint finish and decal damage resulting from normal wear and tear, taking part in competition,

jumping, downhill and/or training for any such events or as a result of exposing the bicycle to, or riding the bicycle in, severe conditions or climates.

Labour and/or transport charges for full or part replacement, repair, return or changeover.

Accident, neglect, improper handling, abuse or wilful damage, misuse, improper assembly and use of devices or components not originally intended for, or not compatible with the bicycle.

Any alteration or repair by you or a third party who is not one of our authorised repairers.

Any specification provided by you. Remedy: Unless otherwise provided, the sole remedy under the above Factor warranty, or any implied warranty, is limited to repair or replacement of defective parts with those of equal or greater value at the sole discretion of Factor.

Except for this remedy Factor will not be responsible for any direct, incidental or consequential loss or damages, including, without limitation, loss or damages for personal injury, property damage or economic losses, whether based on contract, warranty, negligence, product liability or any other theory.

Nothing in this limited warranty will exclude or limit Factor's liability for death or personal injury caused by Factor's negligence or any other liability which cannot be excluded or limited by law. Unless you are a consumer, Factor makes no other warranties, express or implied and all implied warranties, including warranties of merchantability, reasonable care, and fitness for a particular purpose are hereby disclaimed.

Miscellaneous:

In the event that Factor prevails in any court action, you agree to reimburse Factor for the expenses, including attorney's fees and expenses of litigation incurred by Factor in defending against your claim.

Claims made outside the country of purchase may be subject to additional fees and restrictions.

Warranty detail and duration may differ by country. This warranty gives you specific legal rights, and you may also have other rights which may vary from place to place. This warranty does not affect your statutory rights.

To the extent that this warranty statement is inconsistent with local law, this warranty shall be deemed modified to be consistent with such law; under such law, certain disclaimers and limitations may apply to the customer.

Some states and countries do not allow the exclusion or limitation of incidental or consequential damages or warranties, so the above limitations or exclusions may not apply to you.

If it is determined by a court of competent jurisdiction that a certain provision of this limited warranty does not apply, such determination shall not affect any other provision of this limited warranty, and all other provisions shall remain in effect.

The English language version of this limited warranty will prevail.

This limited warranty is governed by the laws of European Union and United States and the courts of European Union and United States shall have the non-exclusive jurisdiction to settle any dispute or claim arising out of or in connection to this limited warranty or its subject matter or formation (including non-contractual disputes or claims).

Seat Post Installation

- Minimum seat post insertion depth is 80mm
- Generously apply carbon assembly compound to the seat post and insert into the frame
- Tighten the Seatpost clamp to 6Nm



Fork Installation

- Your new Lando frame comes equipped with a custom upper split ring that reduces the ID of the bearing down to match a standard 1-1/8" fork steerer. The extra space is used to internally route hydraulic hoses into the frame
- Your new Lando frame uses a standard 1.5" 45x45 upper and lower bearing. These bearings should be greased prior to installation



Fork Installation

- Insert the fork into the frame, adding the split ring, upper dust cover, and your desired quantity of spacers. Slide your stem over the steerer and then mark and cut the steerer as described in the manufactures instructions that came with your fork.
- Note, use the dust cover with no cable holes if there are no cables being run through the upper bearing



Fork Installation

- Install the star fangled nut into your fork steerer according to manufacturer instructions. Ensure that the star nut or expander supplied with your fork is used as damage or misalignment is possible.



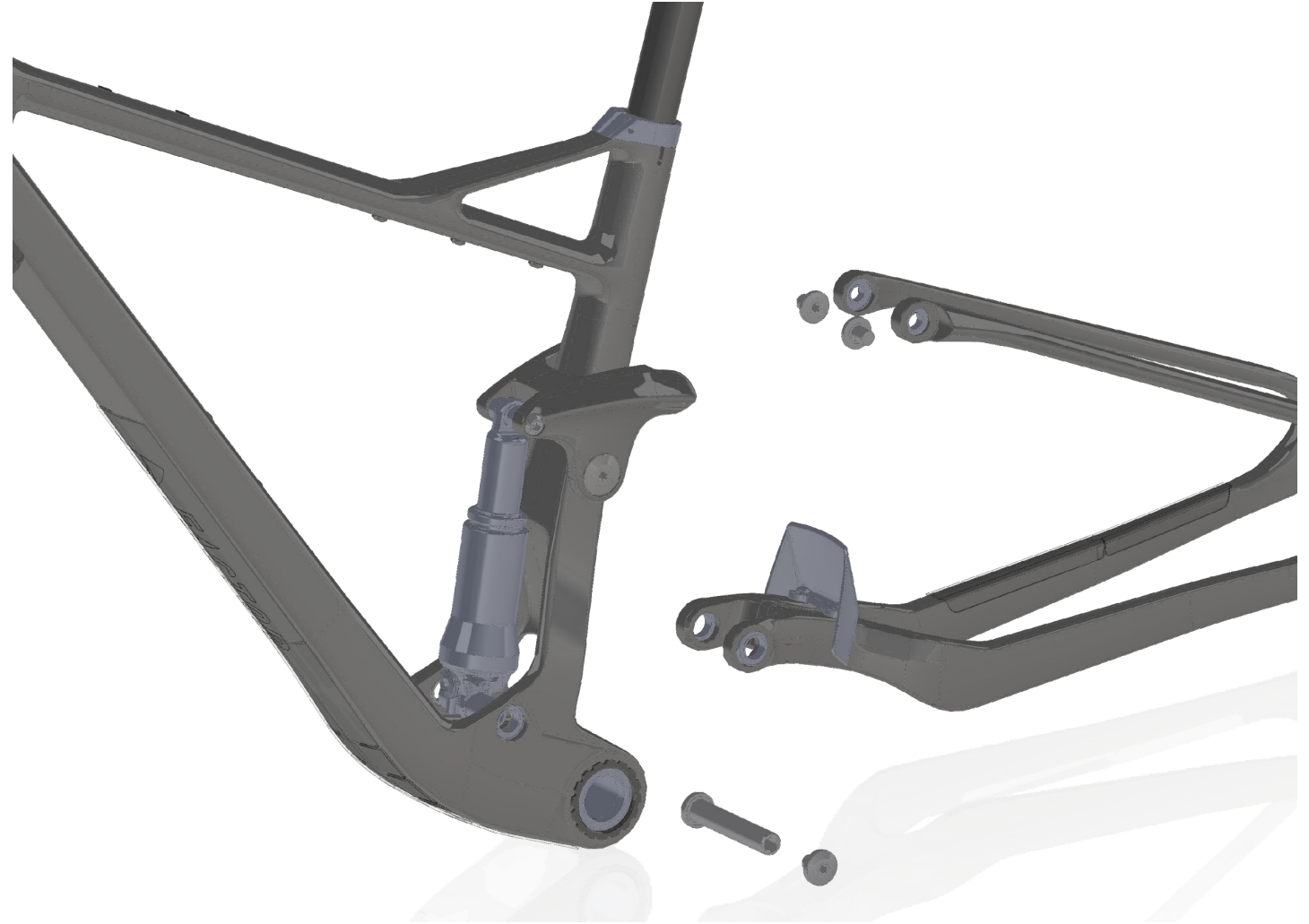
Shock Installation

- Your Lando comes with all of the hardware necessary to support the shock supplied with the frame. When removing or re-installing the shock, be sure of the order of all of the spacers, bushings, and O-Rings
- Always re-apply blue thread locker to all threads in the shock assembly.
- Shock bolts should be torqued to 8 Nm
- If you choose to use a different shock then the one supplied with your frame, please contact Factor for details on spacer and bushing requirements. The hardware used is quite standard, and should fit most major brands shocks.



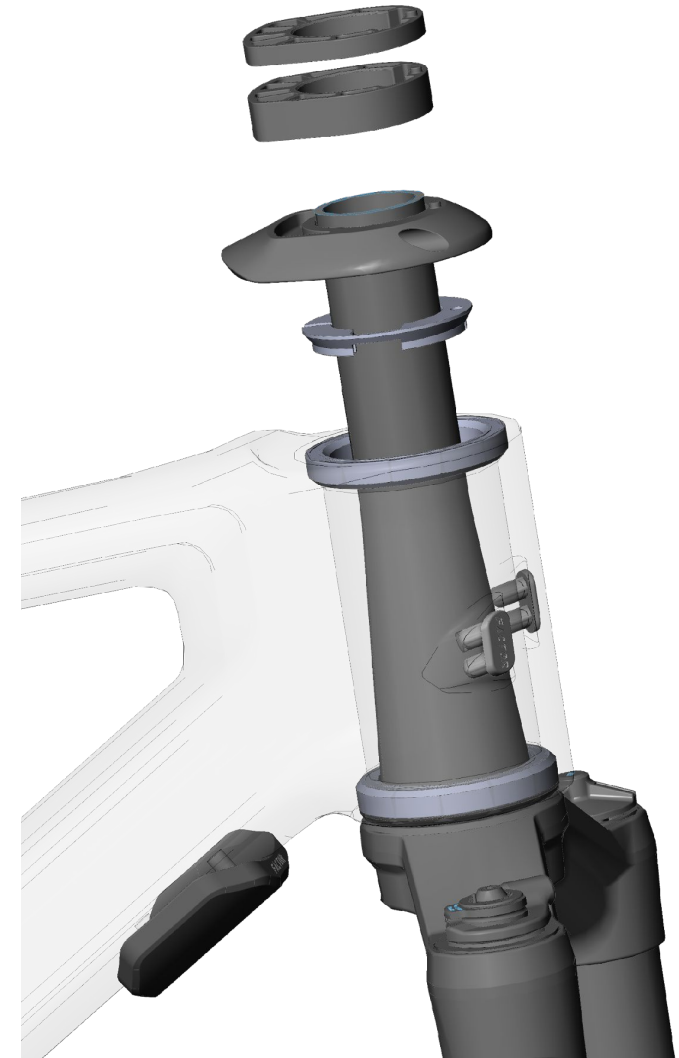
Rear Triangle Removal

- Removing the rear triangle makes the cable routing process quite a bit easier, and is done simply with 3 bolts
- Remove the Main Pivot bolts
- Remove each seatstay bolt, accessing them from the inside of the chainstays
- Be sure to apply blue thread locker to the threads, and lightly grease the shafts on reinstallation.



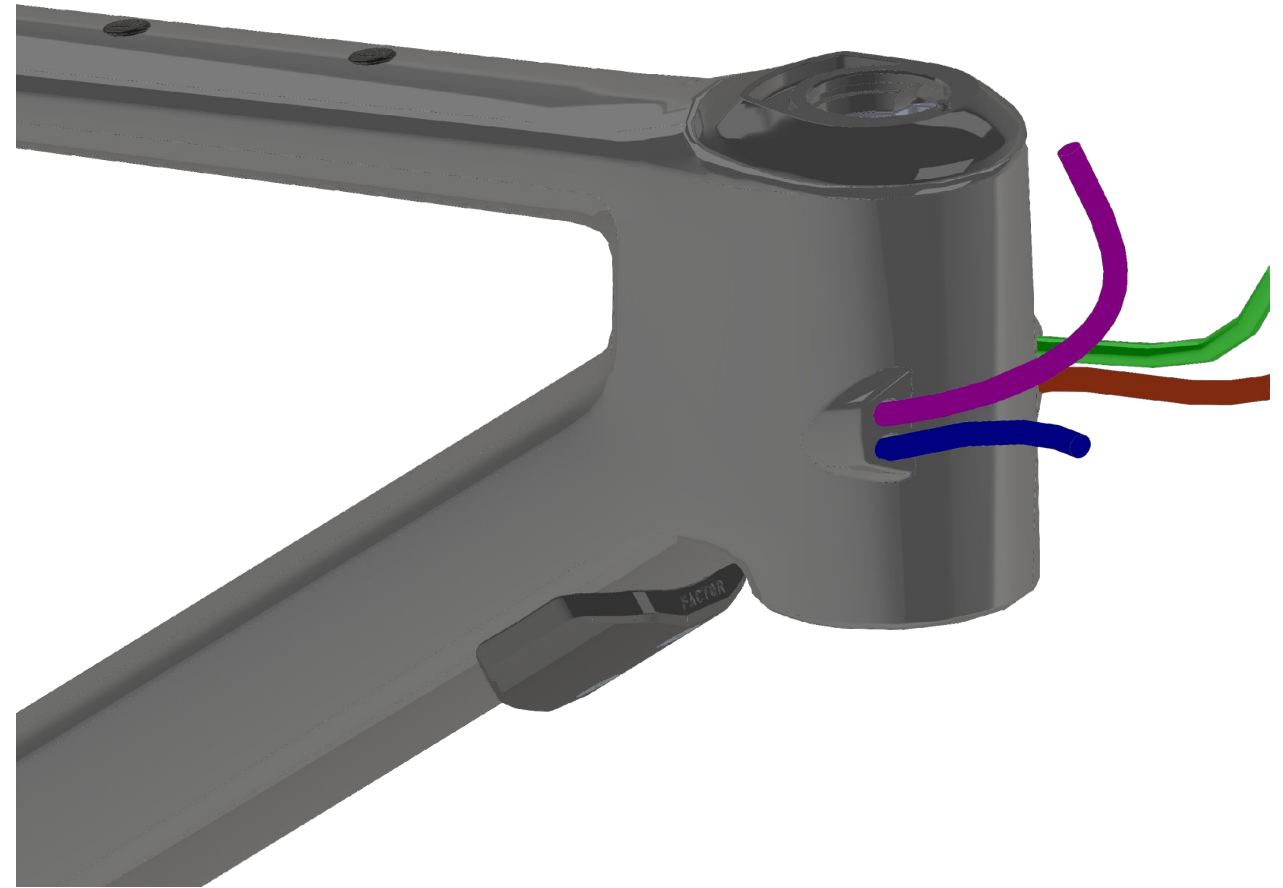
Cable Routing

- Your Lando MTB comes with the ability to configure your cabling in multiple ways depending on your specific setup. Included are two different dust covers and a Black specific routing system outlined in the Headset Section of this manual.
- Its important to note that **ONLY** hydraulic hoses can be run through the headset, either for a dropper post, or the rear brake. The bending radius required will cause too much friction for proper function with cables/housing.



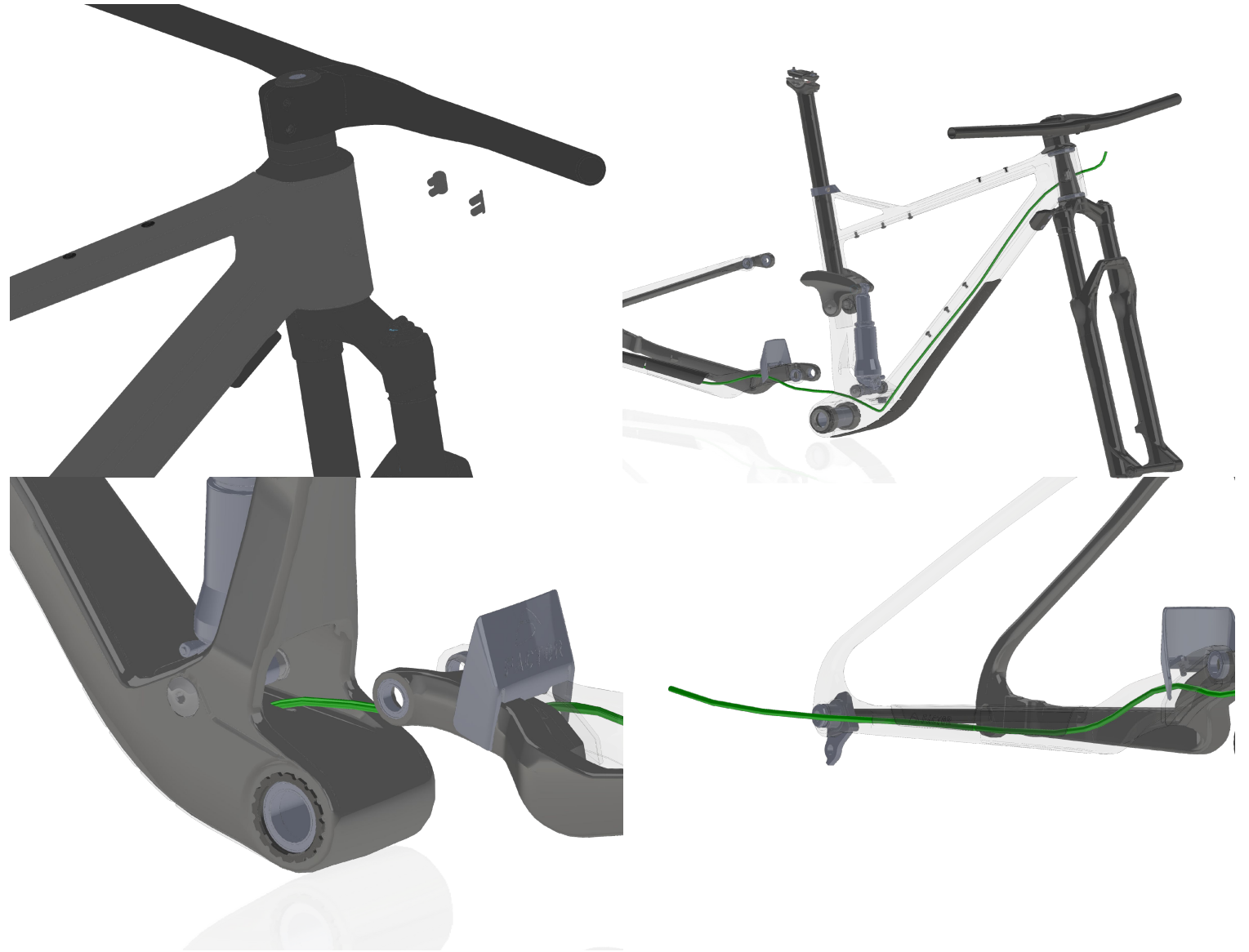
Semi-Internal Routing

- The Lando features the option of semi-internal routing where the cables enter at the head tube. All mechanical cables must use this entry point
- You will likely find it easiest to complete this routing method without the fork or handlebar installed
- Its possible to route the following through these ports:
 - Mechanical Rear Derailleur
 - Mechanical Shock Lockout
 - Mechanical dropper post
 - Hydraulic rear brake hose



Mechanical Rear Derailleur

- Remove Factor branded Grommets on the entry port side of your choice
- Remove the rear Triangle by loosening the Shock and rocker link bolts
- Using a Park Tool IR 1.2 magnetic routing assistant route the guide cable through the front triangle, out the BB cable exits, and then route through the rear triangle, and out at the Rear Derailleur cable exit
- Install Housing
- *Important: its strongly recommended to route the rear brake hose at this time as well
- You may find it easier to route these cables and hoses with the fork removed from the frame



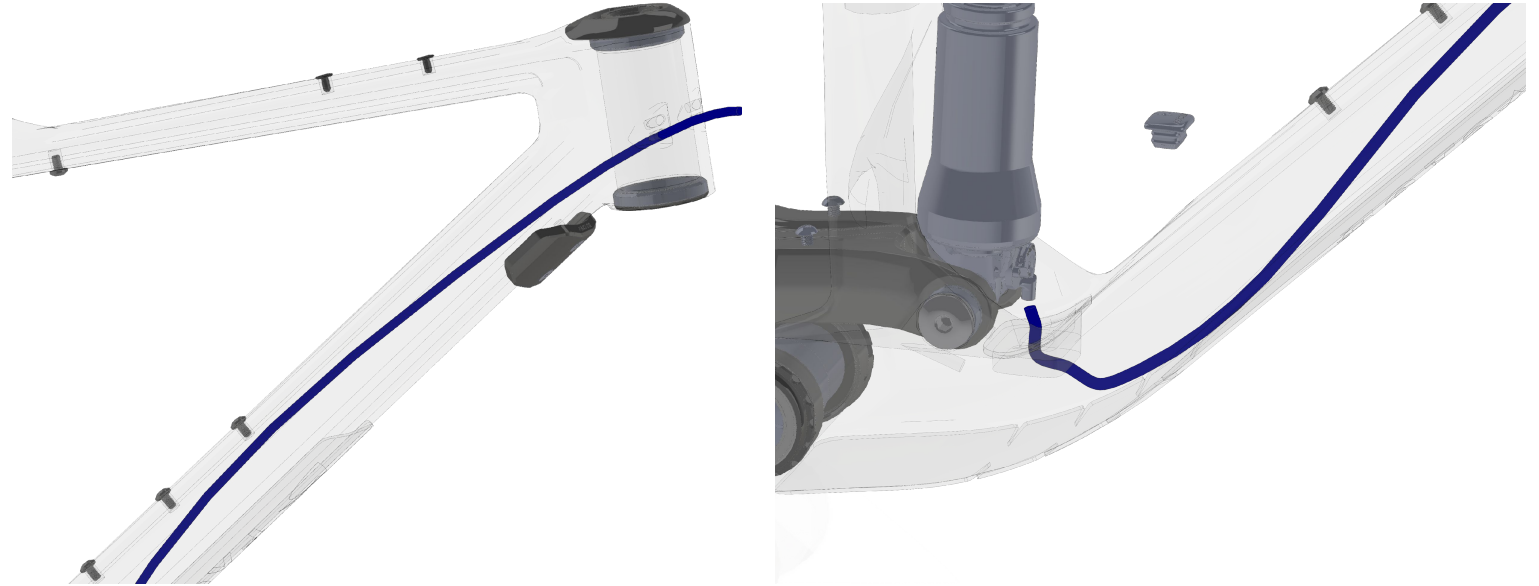
Rear brake hose

- Remove Factor branded Grommets on the entry port side of your choice
- Remove the rear Triangle by loosening the Shock and rocker link bolts
- Using a Park Tool IR 1.2 magnetic routing assistant route the guide cable through the rear triangle, into the downtube at the bottom bracket cable entry hole, and up and out the headtube, out the BB cable exits, and then route through the rear triangle, and out at flat mount brake hose exit
- Install Hose
 - You may find it easier to route these cables and hoses with the fork removed from the frame



Shock Lockout

- Remove Factor branded Grommets at the shock lockout area
- Using a Park Tool IR 1.2 magnetic routing assistant route the guide cable through head tube and then through the downtube
- Install Housing, and terminate cable at the shock
- Reinstall the Factor Grommet, with the hole oriented to ensure that cable isn't kinked



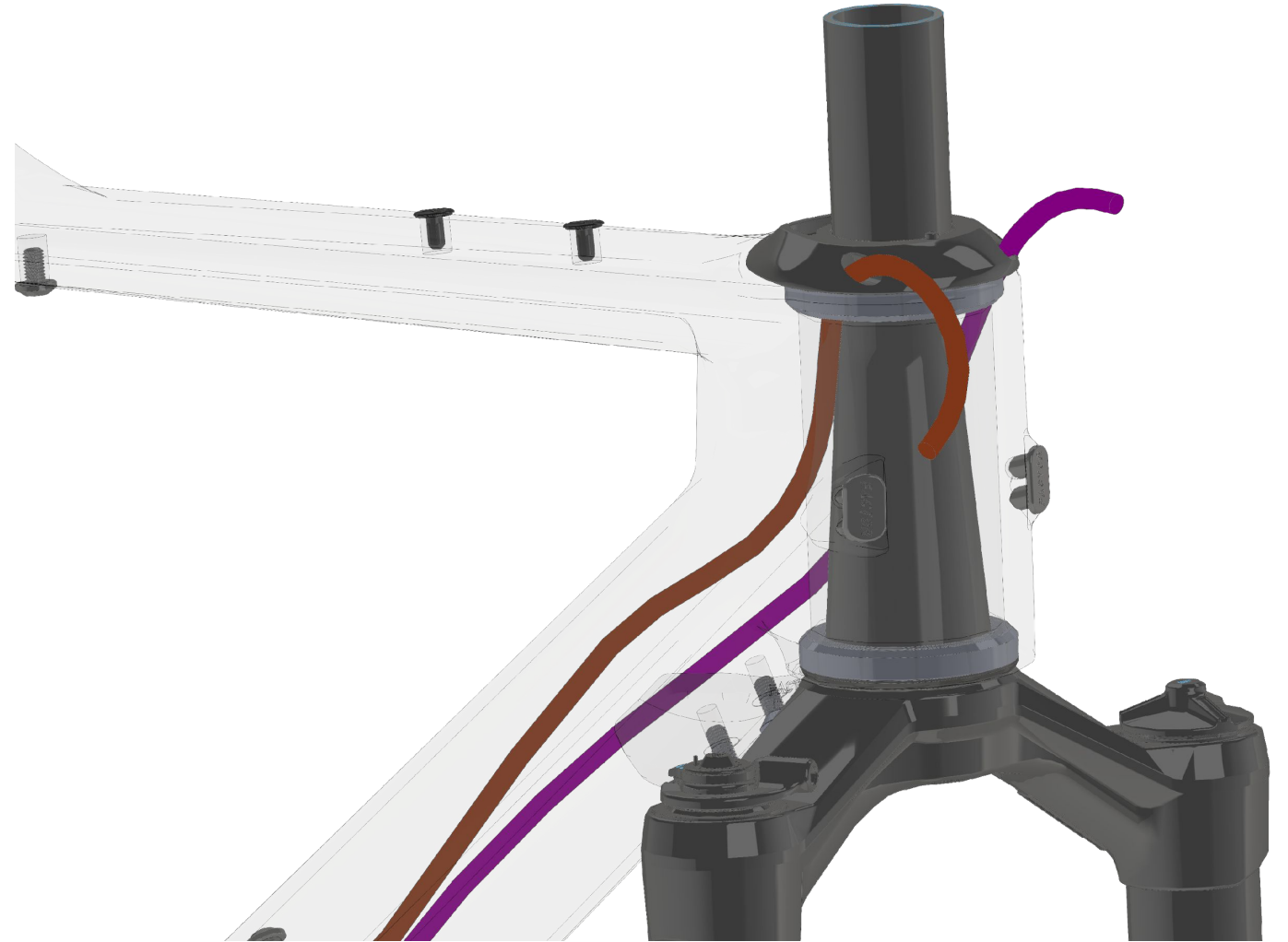
Mechanical Dropper post

- Using a Park Tool IR 1.2 magnetic routing assistant route the guide cable through head tube and then through the downtube. Use the magnetic attachment to bring the guide cable up through the Non-Drive side of the seat tube
- Install the housing for the dropper post per instructions supplied with the seat post



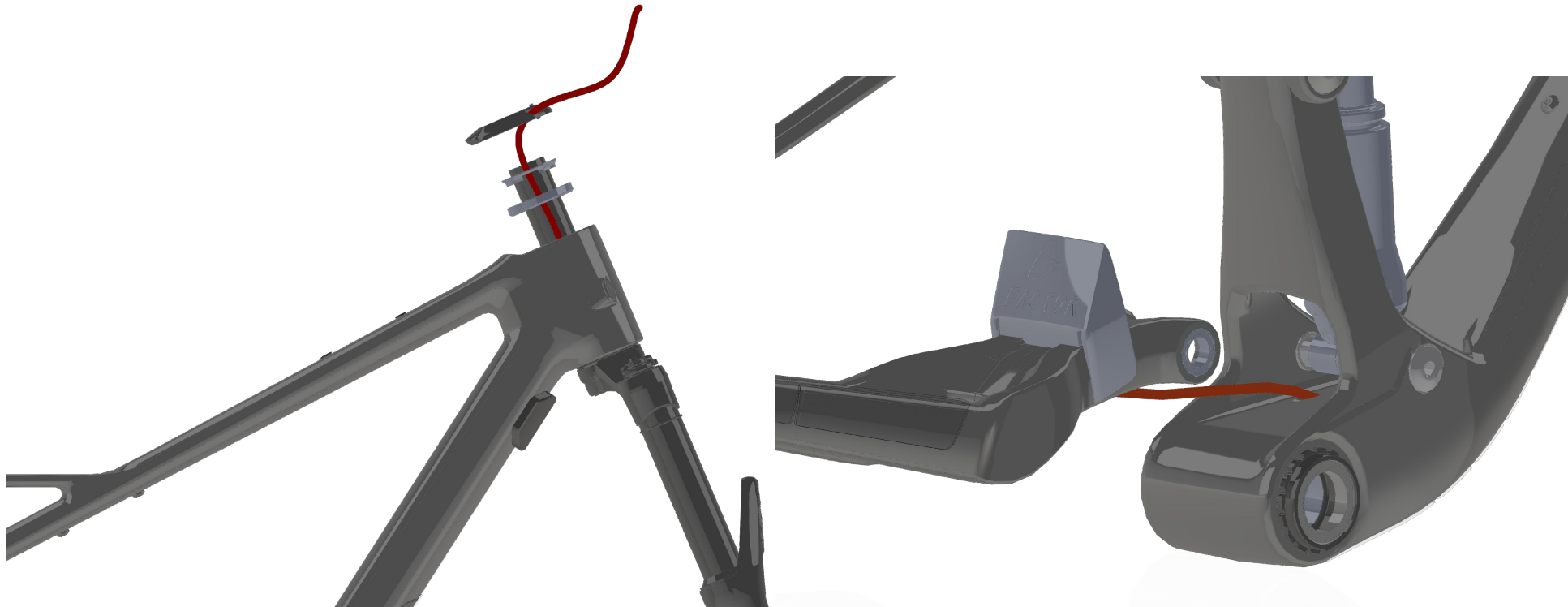
Internal Hose Routing

- The Lando features the option of Internal routing for hydraulic hoses.
- Hoses can pass through a specific Factor Dust cover and through a custom split ring into the frame
- Its possible to route the following through these ports:
 - Hydraulic Dropper hose
 - Rear Brake hose



Rear brake hose-Internal

- Remove the rear Triangle by loosening the Shock and rocker link bolts
- Using a Park Tool IR 1.2 magnetic routing assistant route the guide cable through the rear triangle, into the downtube at the bottom bracket cable entry hole, and up and out the headtube
- Once the brake hose and any other internally routed hoses are out the top of the head tube, pull the bearing, split ring, and dust cap overtop of the hoses



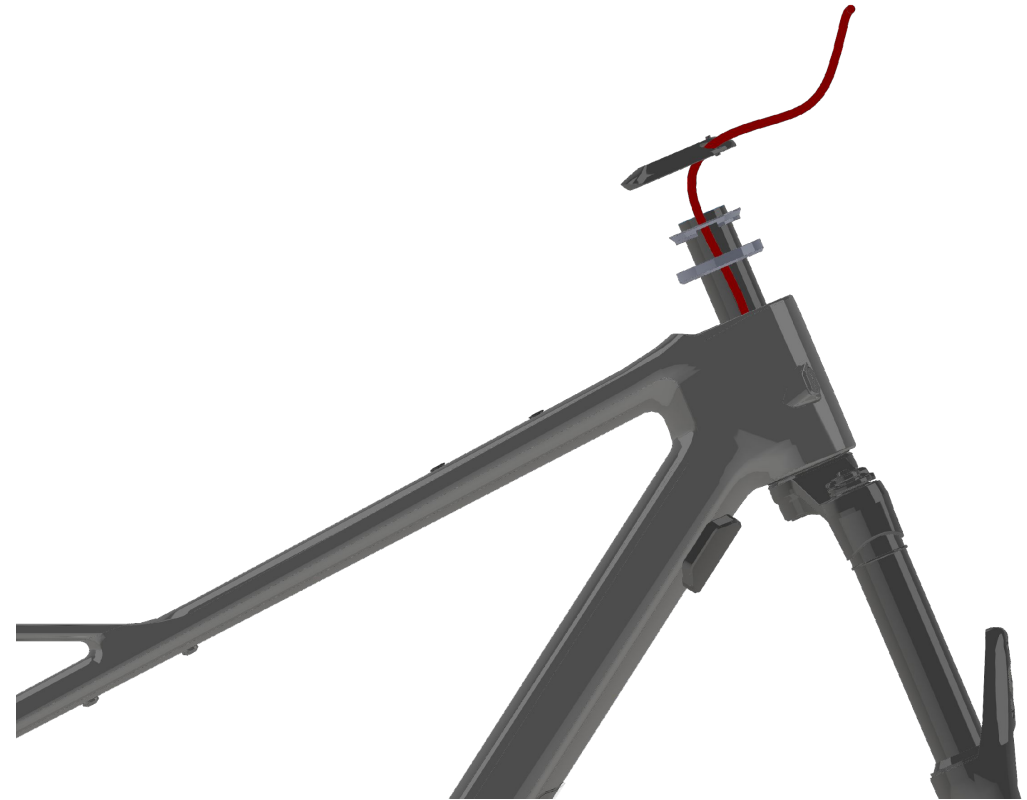
Flat Mount Installation

- Your Factor Lando uses the Shimano standard Flat mount dimensions, with the caliper placement optimized for a 160mm rear rotor
- The bolt depth is 30mm on the Lando, follow all brake manufacture instructions for installation
- If you would like to use a 180mm rear brake, simply add the standard wedge style adapter to allow for the use of these rotors. 180mm is the largest recommended rear rotor size



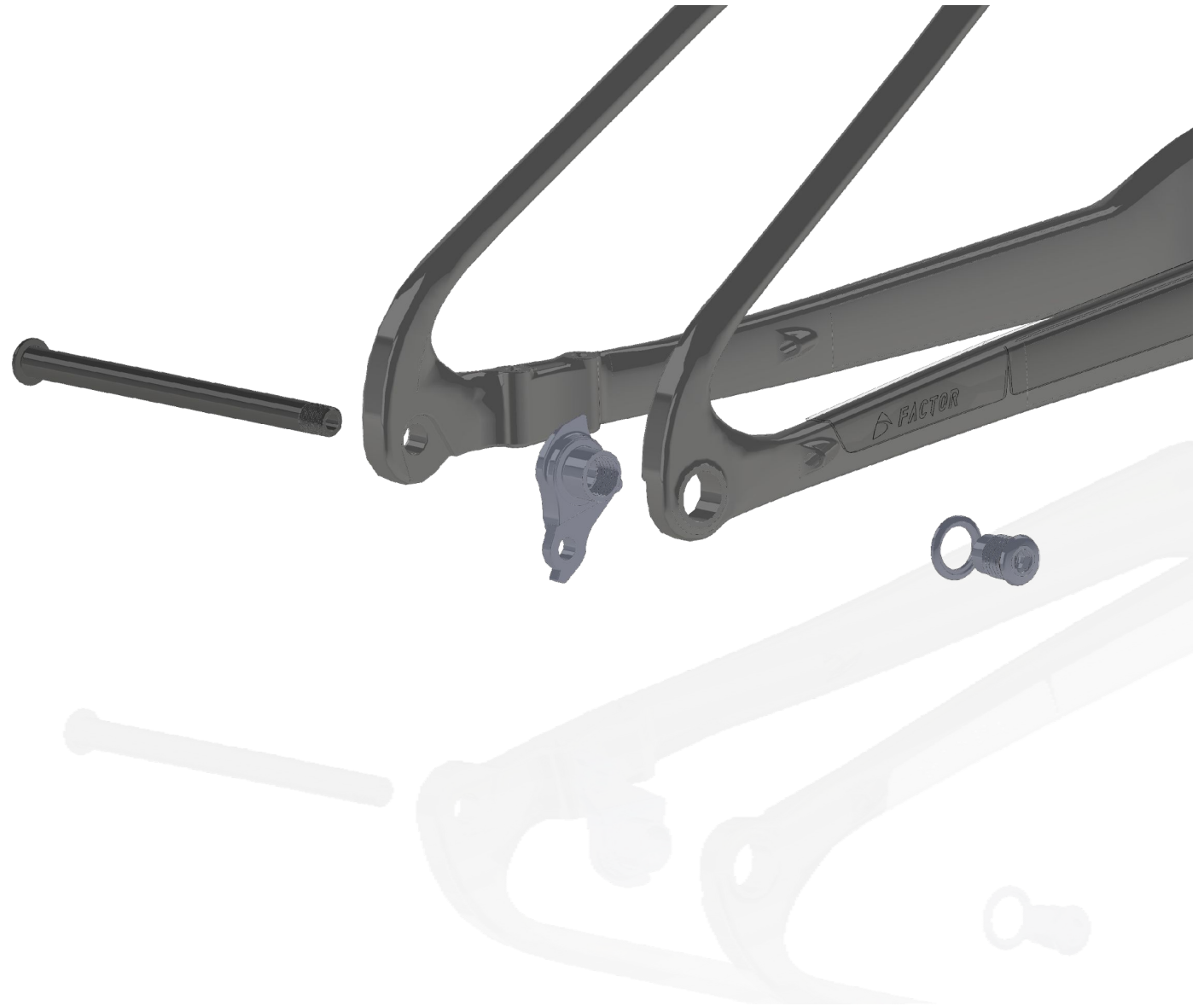
Hydraulic Dropper hose-Internal

- Using a Park Tool IR 1.2 magnetic routing assistant route the guide cable down the seat tube, and up the head tube
- Its helpful to route the hydro dropper post at the same time as the rear brake, bringing both hoses out of the headtube at the same time
- Slide the bearing, split ring, and dust cover over the brake and the dropper hoses at the same time



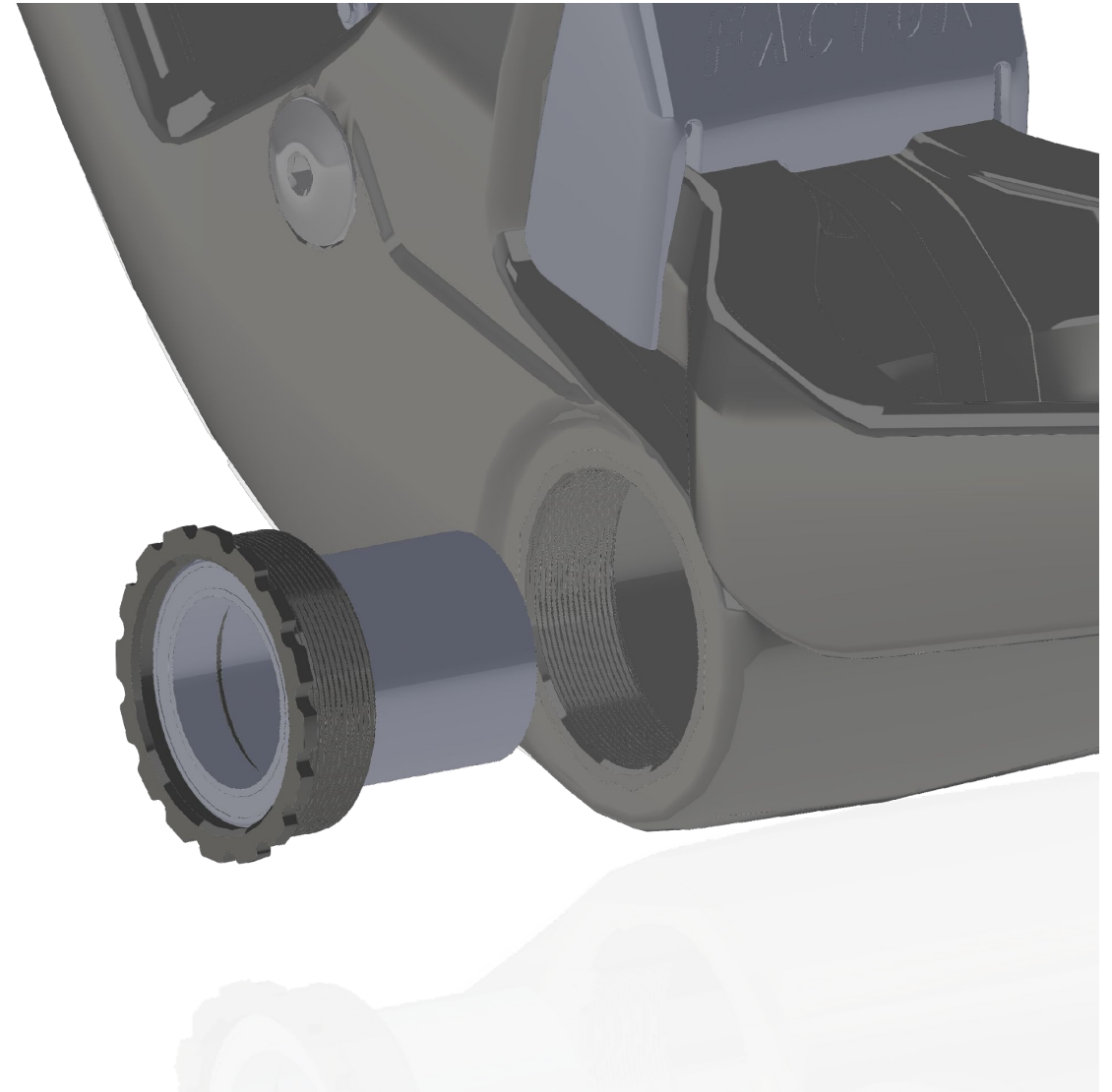
Rear Derailleur installation

- The Lando uses the Sram Universal Derailleur Hanger, and matches all dimensions specified therein, meaning any UDH compatible Rear Derailleur Hanger can be used
- To install, slip the UDH into the frame, install the washer and tighten the outside bolt
- If there is a feeling of binding when tightening the rear Thru-Axle, install the rear wheel and Thru-Axle prior to tightening the outside bolt to ensure all parts are correctly aligned



Bottom Bracket Installation

- The Lando features a T47 threaded bottom bracket. This system is intended for 1x only on a boost chainline.
- This threaded bottom bracket should be greased prior to installation, and tightened using a ParkTool BBT-47 tool
- The BB should be tightened to 40Nm for the Driveside and 30Nm for the non-driveside



Rear Shock Compatibility

- The LANDO XC is compatible with the following shock models from Rock Shox and FOX
 - Rock Shox (model TBC)
 - 190X45 (115 travel)
 - 190X40 (110 travel)
 - FOX (mode TBC)
 - 190X45 (115 travel)
 - 190X40 (110 travel)



FACTORBIKES.COM