



Poultry & Ornamental fowl

- Gallus -

from **MOUSE**  to **ELEPHANT**

Kasper Faunafood, a brand of Arie Blok Diervoeding
Postbus 30 · 3440 AA Woerden
www.kasperfaunafood.nl

KASPER FAUNAFOOD

Kasper Faunafood is the brand under which Arie Blok Diervoeding markets a wide range of high-quality feeds for hobby and exotic animals in the Netherlands and abroad. In the past decades, many hobbyists and professional users such as zoos and breeders have achieved very good results with their animals, using feeds from Kasper Faunafood. Connoisseurs choose Kasper Faunafood!

The first question we always ask is: 'What does the animal eat in its natural environment?'. Besides nutritional needs we also take into account the suitability of the ingredients. All the products are formulated or produced using raw materials without GMO; GMO-Controlled. The raw materials are carefully selected and checked for contents and nutritional values to ensure they are of the very best quality.

Arie Blok Animal Nutrition is GMP+ certified and GMO-controlled.



Animals fed with Kasper Faunafood are top performers!





Chickens and Ornamental fowl

Chickens and ornamental fowl feed has to provide as much of the needs as the birds would need naturally. In nature, the daily feed ration mostly consists of grains, seeds, berries, fruits, parts of plants, little rocks and supplementary worms and beetles.

The amount of feed that chickens and ornamental fowls need is dependent on size, breed, age, egg production and the season. During winter months, chickens and ornamental fowls eat more than during summer months, especially when the animals lay eggs. Kasper Faunafood has a wide range of feed for chickens and ornamental fowls.



Feed for chickens

The Kasper Faunafood poultry feeds have especially made for chickens that are kept around the house for their liveliness. The birds rummage around and lay fresh eggs. Feeding the chickens is a happy event: they always react happily when they get fed. Chickens most of the times eat first what they like most, like grains, seeds and gammarus. These ingredients are so tasteful at Kasper Faunafood, you can even use them to make the chickens tame!



Chicks

Multiple kinds of feed can be fed to chicks while raising them. From day 1 the chicks can be fed with Chicks starter crumbs 1 or Chicks starter mash 1. From 10 weeks of age we advice you to change towards Chicks starter pellet 2, until the age of 20 weeks.

It is also possible to feed one type of food during the rearing period, this can be done with the Chicks Multimix. After the chicks have reached an age of 20 weeks, they can be fed with one of the adult feeds.

Feeding advice

- > All feeds for chicks can be distributed unlimited
- > Make sure there is always enough clean and fresh drinking water



Chicks starter crumble 1

Productshape	crumble
Package	4 kg 20 kg

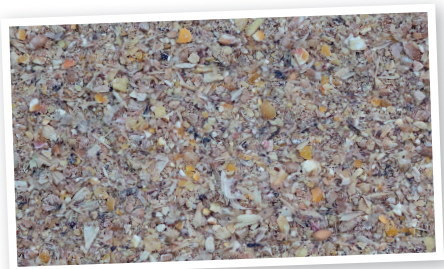
- > To provide during the rearing period of 0-10 weeks of age
- > Balanced feed composition that supports healthy growth and beautiful feathering of new born chicks
- > Crumbled feed that will be eaten easily from the first day of life
- > Contains herbal extract for the support of intestinal health and healthy digestion



Chicks starter mash 1

Productshape	mash
Package	4 kg 20 kg

- > To provide during the rearing period of 0-10 weeks of age
- > Balanced feed composition that supports healthy growth and beautiful feathering of new born chicks
- > Meal type of feed that will be eaten easily from the first day of life
- > Contains herbal extract for the support of intestinal health and healthy digestion





Feed for chicks

Chicks starter pellet 2

Product shape	pellet 2,5 mm
Package	4 kg 20 kg

- > To provide during the rearing period from 10 - 20 weeks of age
- > Balanced feed composition that supports healthy growth and beautiful feathering of chicks
- > The small pellet type of feed (2,5 mm) makes the transition to adult feed easy
- > Contains herbal extract for the support of intestinal health and healthy digestion
- > Palm oil free



Chicks Multimax

Product shape	grain mixture + crumble
Package	4 kg 20 kg

- > To provide ad libitum during the rearing period from 0 - 20 weeks of age
- > One type of feed for the whole growth period from chick to young adult
- > Good feed intake from the first day of life
- > Contains herbal extract for the support of intestinal health and healthy digestion
- > Palm oil free





Mixed grains for chicks fine

Product shape	mixture
Package	4 kg 20 kg

- > Pure, varied mixture of finely broken corn, wheat, barley and broken peeled oats with fine millet seeds
- > To feed in addition to a complete feed, at a maximum of 25% of the daily gift, preferably spread for stimulation of free-range behavior
- > Stimulates free-range behaviour
- > Suitable for chicks of small breeds
- > Palm oil free



Mixed grains for chicks gross

Product shape	mixture
Package	4 kg 20 kg

- > Pure, varied mixture of broken corn, wheat, barley and whole seeds of peeled oats and sorghum
- > To feed in addition to a complete feed, at a maximum of 25% of the daily gift, preferably spread for stimulation of free-range behavior
- > Stimulates free-range behavior
- > Suitable for chicks of medium and large breeds
- > Palm oil free



Herbal extract

Herbal extracts are used in the rearing feeds from Kasper Faunafood, to support the intestinal tract in a natural way. They help to

assure a healthy growth and development of your precious chicks so they will grow into beautiful, robust and healthy adult animals.



Feed for chickens

Adult chicken

From 20 weeks of age, the chicks can be fed with adult feeds. The Poultry Pellets are balanced maintenance pellets for chickens that do not, or sporadically, lay eggs. Your chickens will remain beautiful and healthy when eating this feed.

The same stands for the Multimix Chicken and Multimix Bantam. These feeds are grain mixtures with a vitamin and mineral pellet in the mix. For extra various grain mixtures, try the Vitamix Chicken and Vitamix Bantam. These mixtures have a vitamin and mineral pellet and animal protein from gammarus. A real treat for your chickens!

Chickens who lay an egg everyday need extra nutritious kind of feed. Think of Laying Mash, Laying Pellet and Free-Range Laying Mash. With these feeds, the chicken will be able to lay eggs with a strong eggshell and a beautiful yolk color for a long period.

The feeds explained so far are so called complete feeders. These feeds contain all necessary nutrients, including vitamins, minerals, and trace elements that are needed to ensure a good health.

Next to these feeds, there are different kinds of grain mixtures to add. Providing grain mixtures stimulate foraging behavior and it aids to the wellbeing of the chickens.

Feeding advice:

- > Check the feeding schedule on page 14 for the amounts needed per chicken
- > Make sure there is enough clean and fresh drinking water
- > Provide grit and stomach gravel to grind the grains in the gizzard in a sufficient way. This is only necessary when this is present in the daily feed
- > Only provide green feed in small amounts



Poultry Pellet

Product shape	pellet
Package	20 kg

- > Balanced maintenance feed (pellet 3 mm) for chickens
- > To be fed from 20 weeks of age
- > Pellet form makes selective eating behavior impossible
- > In addition to this feed, give a maximum of 25% grain mixture to promote free-range behavior
- > Palm oil free



Laying Pellet

Product shape	pellet
Package	4 kg 20 kg

- > High-quality laying feed (pellet 3 mm) for chickens that lay a lot of eggs
- > To be fed once the first egg is produced
- > For every day an egg with a strong eggshell and yellow-orange yolk color
- > Pellet form makes selective eating behavior impossible
- > Palm oil free





Feed for chickens

Laying Mash

Product shape	mash
Package	4 kg 20 kg

- > High-quality laying feed (mash) for chickens that lay a lot of eggs
- > To be fed once the first egg is produced
- > The fine meal structure keeps them busy eating and quiet in behaviour
- > For every day an egg with a strong eggshell and yellow-orange yolk color

Free-range laying mash

Product shape	mash
Package	4 kg 20 kg

- > High-quality laying feed (mash) for chickens that lay a lot of eggs
- > All-in-one: whole grains (wheat, barley, sorghum) and complete feed (mash type) in one product
- > To be fed once the first egg is produced
- > The coarse structure ensures a good feed intake and stimulates free-range behaviour
- > For every day an egg with a strong eggshell and yellow-orange yolk color





Multimix Chicken | Multimix Bantam

Product shape	mixture with pellet
Package	4 kg 20 kg

- > To be fed from 20 weeks of age
- > Mix of broken grains and peas, sorghum, sunflower seeds and a vitamin-mineral pellet
- > All-in-one: grain mixture and complete feed (pellet 2,5 mm) in one product
- > Contains gizzard grit that helps to grind and digest the feed in the intestine
- > In Multimix Bantam the grains are more finely broken compared to Multimix Chicken
- > Soy and palm oil free



Vitamix Snackmix

Productshape	grain mixture with gammarus
Package	0,6 kg

- > Pure mixture of finely broken maize, peeled oats, sorghum, seeds, sunflower seeds, broken peas and gammarus
- > A healthy treat for chickens to pet them
- > Contains animal protein (gammarus) that supports a good condition





Feed for chickens

Vitamix Chicken | Vitamix Bantam

Product shape	grain mixture with pellet and gammarus
Package	3 kg 7 kg

- > To be fed from 20 weeks of age
- > Rich mixture of broken grains and peas, sorghum, sunflower seeds, millet and other seeds and a vitamin-mineral pellet
- > Contains animal protein (gammarus) that supports a good condition
- > All-in-one: grain mixture and complete feed (pellet 2,5 mm) in one product
- > Contains gizzard grit that helps to grind and digest the feed in the intestine
- > In Vitamix Bantam the grains are more finely broken compared to Vitamix Chicken
- > Soy and palm oil free



Multigrain Chicken

Product shape	grain mixture
Package	4 kg 20 kg

- > Pure, varied mixture of wheat, broken corn, sorghum, sunflower seeds and broken peas
- > To feed in addition to a complete feed, at a maximum of 25% of the daily gift, preferably spread for stimulation of free-range behavior
- > Stimulates free-range behaviour
- > Suitable for chickens of all breeds
- > Grain mixture without barley
- > Palm oil free





Mixed grain with broken maize

Product shape	grain mixture
Package	20 kg

- > Pure varied mixture of wheat, broken corn, barley and sorghum
- > To feed in addition to a complete feed, at a maximum of 25% of the daily gift, preferably spread for stimulation of free-range behavior
- > Stimulates free-range behaviour
- > Suitable for chickens of small and medium breeds
- > Palm oil free

Mixed grain with whole maize

Product shape	grain mixture
Package	20 kg

- > Pure varied mixture of wheat, corn, barley and sorghum
- > To feed in addition to a complete feed, at a maximum of 25% of the daily gift, preferably spread for stimulation of free-range behavior
- > Stimulates free-range behaviour
- > Suitable for chickens of large breeds
- > Palm oil free





Feed for chickens

The feed intake depends on breed, age, and especially size (weight) of the chickens and the amount of eggs they lay every week. Below the feeding schedule can be found and this can be used as guidance.

Feeding schedule Chickens					
Bodyweight in grams	Species (for example)	Eggs per week			
		0 -1	3	5	every day
500 - 1000	Sebright bantam, Barbu d'Anvers, Silkie bantam, Chabo Bantam, Hamburg bantam	20 gr/day	70 gr/day	80 gr/day	90 gr/day
1000 - 2000	Hamburg, Polish chicken	40 gr/day	80 gr/day	90 gr/day	100 gr/day
2000 - 3000	Barnevelder, Leghorn	60 gr/day	110 gr/day	120 gr/day	130 gr/day
3000 and more	Brahma, New Hampshire, Orpington	80 gr/day	130 gr/day	140 gr/day	150 gr/day



Different types of products

Mash

The nice and coarse structure ensure good and calm intake.



Crumble

Crumble feed which ensures perfect intake from day one.



(Starter)pellet

Due to the pellet shape, selective eating is impossible.



Mixed grains

To spread out preferably, for stimulating free-range behavior.



Mix

A mixed product with grain mixtures, pellets or mash, even possible with gammadus.





Ornamental Fowl products

The Kasper Faunafood ornamental fowl feeds are grouped under the name Gallus. These feeds are made to fulfill the special needs of ornamental fowls. The feeds ensure beautiful feathering and a fine natural coloring of the beak, comb, legs, and feathers. The feeds also hits all the needs for special breeds of ornamental fowls that raise chicks.

Peacocks, all kinds of pheasants, partridges, turkeys, guinea fowl, quail and country fowl breeds are all kinds of ornamental fowl. Hobbyists and breeders already attain the best results for decades with the use of the Gallus products of Kasper Faunafood.

Ornamental fowl chicks

Different kinds of feeds are for rearing chicks. From day one, chicks can be fed with Gallus 1 Starter Mash or with Gallus Superstart Starter Crumble. The advice is Gallus 1 Starter Mash up to the age of 10 weeks and then to transfer to Gallus 2 Starter Pellet. The Gallus Superstart Starter Crumble is made specifically for chicks that needs a high protein content, like peacocks, pheasants, quail and turkeys and it can be fed in

the first 4 weeks of life. After these 4 weeks, the advice is to transfer to Gallus 2 Starter Pellet.

With this feeding advice healthy rearing of precious ornamental fowl chicks will be realized. When the chicks have reached an age of 20 weeks, they can be fed with the adult ornamental fowl feeds.

Feeding advice starter feeds

- > All feeds for ornamental fowl chicks can be distributed unlimited
- > Make sure there is always enough fresh and clean drinking water



Faunabiobalance

With the name Faunabiobalance herbal extracts and medium chain fatty acids are present in the feeds to supports a healthy intestinal tract in a natural way. Growth and development of precious ornamental fowls chicks will be positively assured and your animals will grow to be beautiful, robust, and healthy adult animals.

Gallus Superstart Starter crumble

Product shape	crumble
Package	20 kg

- > To be provided all day long during the rearing period from 0-4 weeks of age
- > Special rearing feed with extra high protein content (30%)
- > For specific ornamental fowl breeds such as peacocks, glossy pheasants and quails that require a very high protein content in the feed during the first weeks of life
- > Crumbled feed that will be eaten easily from the first day of life
- > Contains Faunabiobalance to support the intestinal health and a healthy digestion
- > Contains mearl, a natural source of calcium from marine algae, to promote strong bones
- > The added seaweed contains a range of bioactive substances to support the immune system





Feed for ornamental fowls

Gallus 1 Starter mash

Product shape	mash
Package	20 kg

- > To provide during the rearing period from 0-10 weeks of age
- > Special rearing feed for newborn chicks of ornamental fowl breeds that supports a healthy growth and beautiful feathering
- > Meal type of feed that will be eaten easily from the first day of life
- > Contains Faunabiobalance to support the intestinal health and a healthy digestion
- > Contains meal, a natural source of calcium from marine algae, to promote strong bones

Gallus 2 Starter pellet

Product shape	pellet
Package	15 kg

- > To be provided all day long during the rearing period from 10-20 weeks of age, for turkeys from 4 weeks of age
- > Special rearing feed for chicks of ornamental fowl breeds that supports a healthy growth and beautiful feathering
- > The small pellet type of feed (2,5 mm) makes the transition to adult feed easy
- > Contains Faunabiobalance to support the intestinal health and healthy digestion
- > Contains several carotene sources for the natural coloring of beak, comb, legs and feathers
- > Contains oregano oil
- > Palm oil free





Adult ornamental fowls

Ornamental fowls can be fed with adult feeds from 20 weeks of age. Gallus 3 is a feed specially made to obtain an optimal condition of the animals. The feeds contain carotenoids for a natural coloring of the beak, comb, legs and feathers and it contains extra vitamins and high quality (chelated) trace elements (like zinc and selenium) for a good feathering.

Gallus Multimix is a mixture that contains fine broken grains and peas, millet and seeds, supplemented with vitamin and mineral pellets. This mix is highly suited for small breeds and quails.

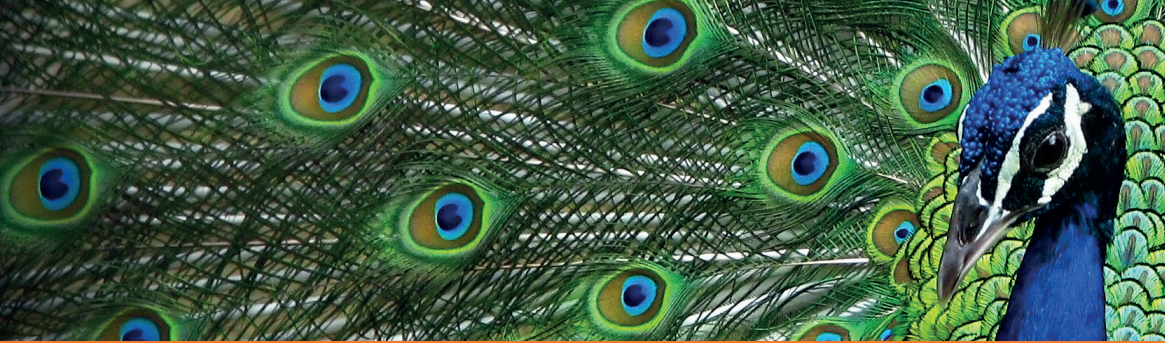
Gallus 4 Breeding pellet is a special feed for ornamental fowls to be fed from 6 weeks before breeding season and during the breeding season. The composition is fully adjusted to raise precious eggs and vital ornamental fowl chicks.

The feeds mentioned above are so called complete feeds. This means that they contain all nutrients, including vitamins, minerals, and trace elements that are needed for the bird to be healthy.

Next to these feeds, Gallus pheasant grains can be fed. This is a pure grain mixture of whole wheat, broken maize and sorghum. Providing grain mixtures stimulates free-range behavior and aids to the wellbeing of the ornamental fowls.

Feeding advice adult ornamental fowls

- > Check the feeding schedule on page 23 to see the amounts of feed needed per bird
- > Make sure there is always enough clean and fresh drinking water
- > Provide grit and stomach gravel to grind the grains in the gizzard in a correct way. This is only needed when this is not present in the daily feed
- > Only provide green feed in small amounts



Products for ornamental fowls

Gallus 3 Maintenance pellet

Product shape	pellet
Package	4 kg 20 kg

- > Special feed (2,5 mm pellet) for an optimal condition of ornamental fowls (galliformes)
- > To be fed from 20 weeks of age and outside of the breeding season
- > Contains extra vitamins and chelated trace elements (e.g. zinc and selenium) to support a beautiful feathering
- > Contains several carotene sources for the natural coloring of beak, comb, legs and feathers
- > The amino acid pattern is aimed at supporting feathering
- > Palm oil free

Gallus Multimix

Product shape	grain mixture with a pellet
Package	3 kg 20 kg

- > To be fed from 20 weeks of age
- > Special feed for small breeds of ornamental fowls such as seramas and quail
- > Mixture of finely broken grains and peas, millet and other seeds and a vitamin-mineral pellet (2,5 mm)
- > Contains several carotene sources for the natural coloring of beak, comb, legs and feathers
- > Soy and palm oil free





Gallus Pheasant grain

Product shape	grain mixture
Package	20 kg

- > Pure varied mixture of wheat, broken corn and sorghum
- > Recommended for ornamental fowls such as pheasants, peacocks, turkeys, partridges, guinea fowls, quail, bantam fowls and old fowl breeds
- > To feed in addition to a complete feed, at a maximum of 25% of the daily gift, preferably spread for stimulation of free-range behavior
- > Stimulates free-range behaviour
- > Contains gizzard grit that helps to grind and digest the feed in the intestine
- > Palm oil free

Gallus 4 Breeder pellet

Product shape	pellet
Package	20 kg

- > Special feed (pellet 2,5 mm) for ornamental fowls (galliformes) that produce valuable offspring
- > To be fed from 6 weeks before and during the breeding season
- > Rich in vitamins and chelated trace elements (e.g. zinc and selenium) to support hatching results and viable ornamental fowl chicks.
- > Rich in calcium for the formation of eggshells
- > Contains oregano oil
- > Palm oil free





Products for ornamental fowls

Feed intake depends on breed, age, and size (weight) of the ornamental fowl.
Next feeding schedule can be used as a guidance.

Product advice chart feed for Ornamental fowls		
Age	Product name	Type
0 - 10 weeks	Gallus I	Starter mash
10 - 20 weeks	Gallus II	Starter pellet
After 20 weeks and outside the breeding season	Gallus III	Maintenance pellet
6 weeks before and during the breeding season	Gallus IV	Breeding pellet

Product advice chart for chickens of turkeys and ornamental fowls which needed extra proteins	
Age	Product name
0 - 4 weeks	Gallus Superstart Starter crumble
4 weeks - 6 weeks	Gradual swichting to Gallus 2 Starter pellet
	step 1: 2/3 Superstart + 1/3 Gallus 2
	step 2: 1/2 Superstart + 1/2 Gallus 2
	step 3: 1/3 Superstart + 2/3 Gallus 2
6 weeks - 20 weeks	Gallus 2 Starter pellet



Feeding schedule of Ornamental fowls			
Bodyweight in gr/animal	Species (for example)	After 20 weeks of age and outside the breeding season (grams/day)	6 weeks before and during the breeding season (grams/day)
50 - 150	Quail	5	15
150 - 500	Partridge, Malaysian Serama, Roull-roull	10	30
500 - 1000	Red jungfowl, Rhode Island Red dwarf fowl, Welsumer dwarf fowl, Silkie bantam, Wyandotte dwarf fowl	20	50
1000 - 2000	Sussex dwarf fowl, Guinea fowl, Black grouse, Tragopan, Common pheasant	40	70
2000 - 3000	Monal, Chaams fowl	60	90
3000 - 5000	Ocellated Turkey	80	110
5000 and more	Blue peafowl, Green peafowl, Turkey	>100	>130

Nutritional values

	Product shape	Min Crude protein %	Min Crude fat %	Max Crude fibre %	Max Crude ashes %	Vit A IU/kg	Vit D3 IU/kg	Vit. E mg/kg	Beta-carotene	Extra
Poultry										
Chicks starter crumble 1 (0-10 weeks)	crumble	20,0	4,5	3,5	6,5	10.000	3.000 **	60		k / z
Chicks starter mash 1 (0-10 weeks)	mash	20,0	4,5	4,5	6,5	10.000	3.000 **	60		k
Chicks starter pellet 2 (10-20 weeks)	2,5 mm pellet	17,0	4,5	5,0	6,0	10.000	2.500 *	40		k
Chicks Multimix (0-20 weeks)	grain mixture with crumble	17,0	3,0	5,0	6,0	10.000	2.500 *	40		k
Mixed grains for chicks fine	grain mixture	10,0	3,0	4,0	2,0	-	-	-		
Mixed grains for chicks gross	grain mixture	10,0	3,0	4,0	2,0	-	-	-		
Poultry pellet	3 mm maintenance pellet	14,0	3,5	5,5	13,0	10.000	2.000 *	25		
Laying pellet	3 mm laying pellet	16,0	5,5	5,0	13,0	10.000	2.500 *	40		
Laying mash	laying meal	16,0	5,5	5,0	13,0	10.000	3.000 **	40		
Free - range laying mash	grain mixture with laying mash	16,0	4,5	5,0	13,0	10.000	3.000 **	40		
Multimix Chicken	grain mixture with a pellet	11,5	3,5	3,5	11,0	7.500	1.500 *	40		
Multimix Bantam	grain mixture with a pellet	11,5	3,5	3,5	11,0	7.500	1.500 *	40		
Multigrain Chicken	grain mixture	10,0	3,0	3,5	2,5	-	-	-		
Mixed grains with broken maize	grain mixture	10,0	2,5	3,5	2,5	-	-	-		
Mixed grains with whole maize	grain mixture	10,0	2,5	3,5	2,5	-	-	-		
Vitamix Chicken	grain mixture with a pellet and gammarus	14,0	5,5	5,5	10,5	10.000	2.100 *	55		
Vitamix Bantam	grain mixture with a pellet and gammarus	14,0	5,5	5,5	10,5	10.000	2.100 *	55		
Vitamix Snackmix	grain mixture with gammarus	13,5	9,0	9,0	3,5	-	-	-		
Ornamental fowl										
Gallus Superstart Starter crumble	crumble	32,0	6,5	3,5	8,0	10.000	3.200 **	100		f / k / z
Gallus 1 Starter mash (0-10 weeks)	mash	27,0	6,5	4,5	4,5	10.000	3.000 **	55		f / k
Gallus 2 Starter pellet (10-20 weeks)	2,5 mm pellet	19,5	4,5	4,5	7,0	10.000	3.000 *	60	2	f / k / o
Gallus 3 Maintenance pellet	2,5 mm pellet	16,0	4,0	5,0	8,0	10.000	3.000 *	40	2	
Gallus 4 Breeder pellet	2,5 mm pellet	17,0	4,0	3,5	12,0	10.000	3.000 *	75	2	o
Gallus Multimix	grain mixture with a pellet	13,5	6,5	6,5	9,0	10.000	2.750 *	75		
Gallus Pheasant Grain	grain mixture	9,5	3,0	2,5	14,0	-	-	-		

For the exact nutritional values, see label on the package

* 20% in the form of 25-hydroxycholecalciferol

** 50% in the form of 25-hydroxycholecalciferol

f = faunabiobalance for a natural balance of intestinal flora
 | *o* = oregano - oil | *z* = seaweed
k = herbal extract to support the health of the gastrointestinal