

# AQUATIC MITIGATION

## OVERVIEW:

- Stream Enhancement & Restoration = 52 miles (Ephemeral & Intermittent)
- Creation of 8 acres of Emergent Wetlands

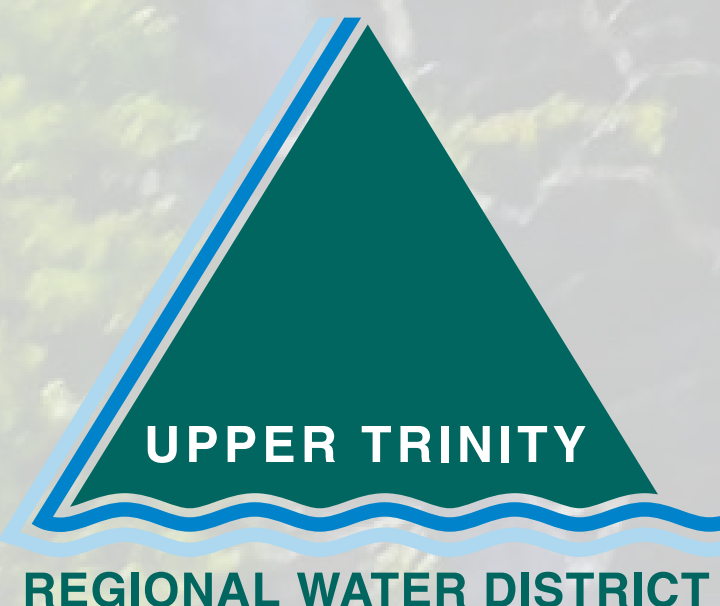




# CLEARING & DEMOLITION

## OVERVIEW:

- Clearing Selected Areas Within Conservation Pool
- Demolition of Existing Structures
- Fence Removal
- Grading to Remove Navigation Hazards





# CONVEYANCE ELEMENTS

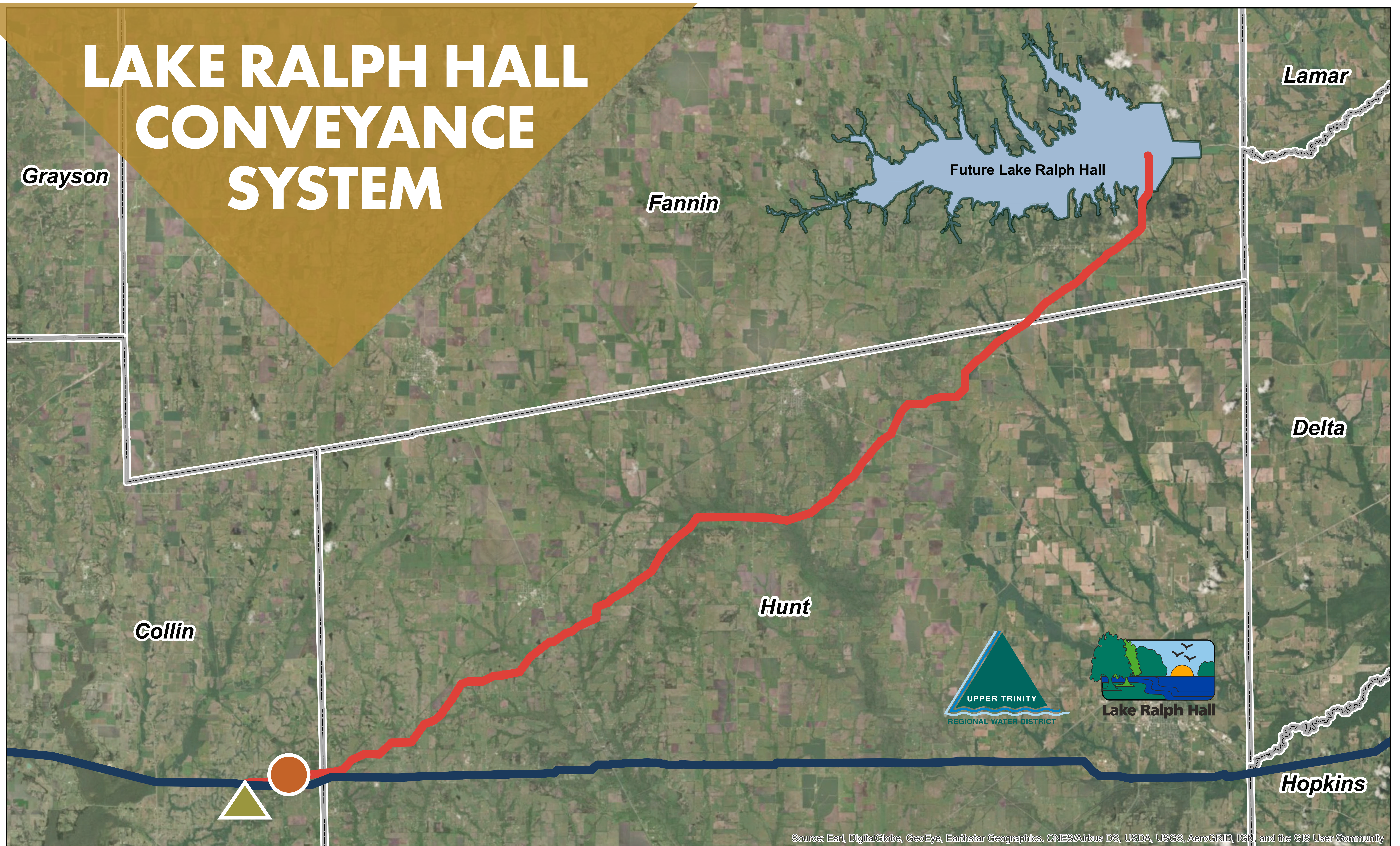
## OVERVIEW:

- Pipeline Length = 32 miles
- Diameter = 54 or 60 inch
- Balancing Reservoir = 5 acres
- Pump Station:
  - 45 MGD Initial Phase
  - 80 MGD Ultimate

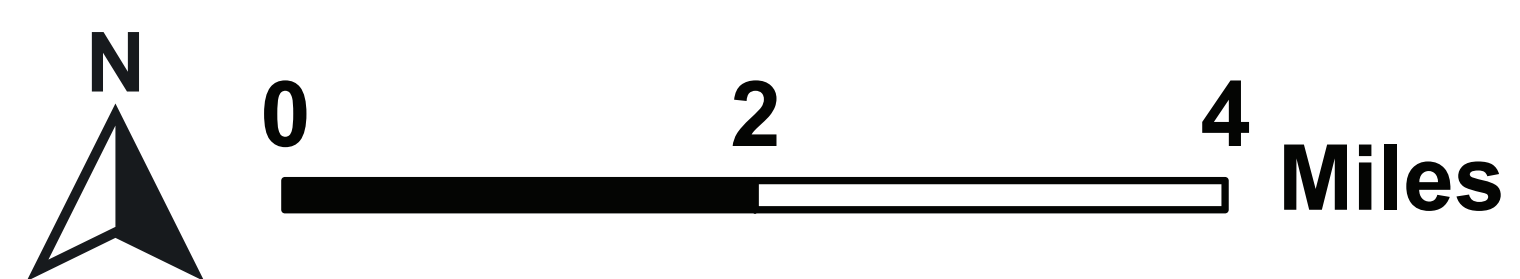




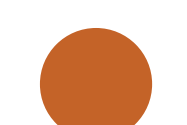



# LAKE RALPH HALL CONVEYANCE SYSTEM



Source: Esri, DigitalGlobe, GeoEye, Earthstar Geographics, CNES/Airbus DS, USDA, USGS, AeroGRID, IGN, and the GIS User Community



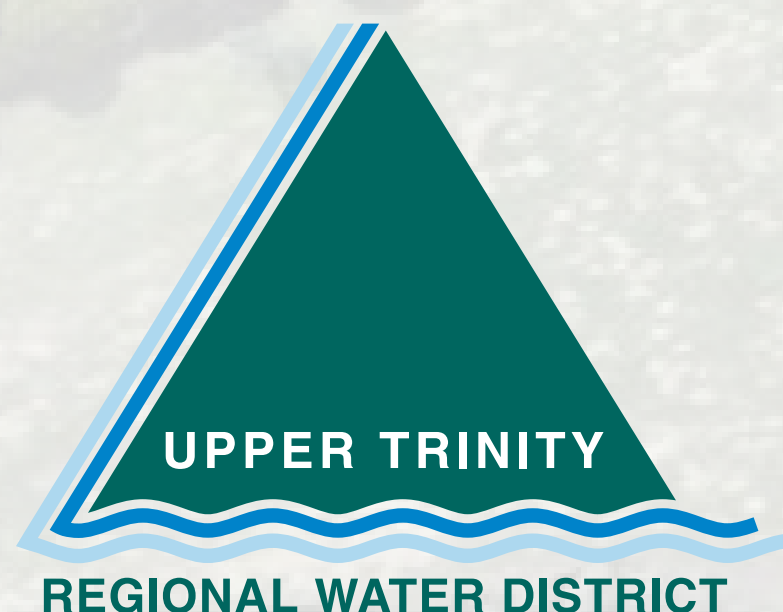
-  Proposed Lake Ralph Hall Pipeline
-  Existing Chapman Lake Pipeline
-  Existing Irving Balancing Reservoir and Proposed Lake Ralph Hall Balancing Reservoir
-  Existing Irving Pump Station



# LEON HURSE DAM & SPILLWAYS

## OVERVIEW:

- Embankment Length = 2.32 miles
- Maximum Height = 103 ft.
- Top Width = 20 ft.
- Embankment Fill = 3 million CY
- RCC Spillway = 125,000 CY
- Reinforced Concrete = 7,500 CY

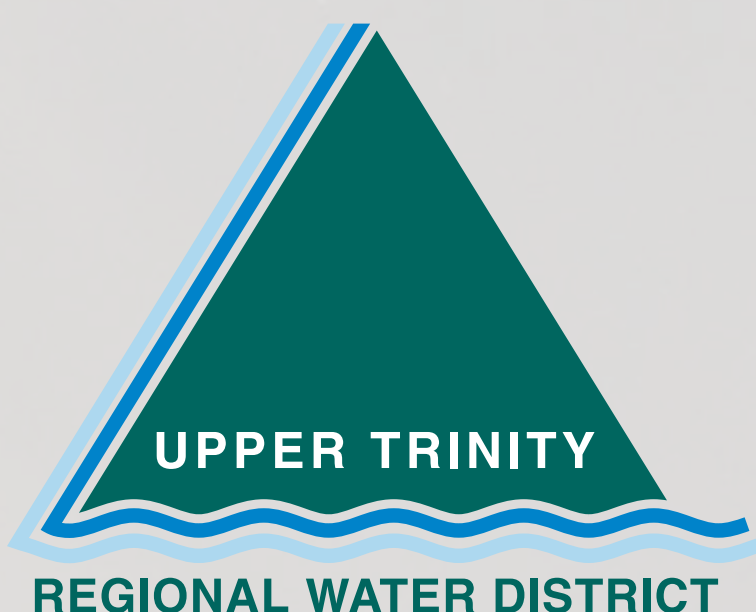




# PROGRAM SUPPORT

## OVERVIEW:

- Program Quality Assurance Laboratory
- Staff Augmentation for Program Support
  - Specialty Inspection
  - Construction Management Support
  - Miscellaneous Engineering
- Program Management Infrastructure





# PROPOSED LAKE RALPH HALL

## Legend

- Project Boundary
- Proposed Leon Hurse Dam
- Proposed Mitigation Zones
- Proposed Raw Water Pipeline

N  
0 2,500 5,000 Feet

ROADS &  
BRIDGES

LEON HURSE DAM  
& SPILLWAYS

CLEARING  
& DEMOLITION

PROGRAM  
SUPPORT

SUPPORT  
FACILITIES

AQUATIC  
MITIGATION

CONVEYANCE  
ELEMENTS

LADONIA



Preliminary Subject to Charge  
The Preliminary Project Boundary Line  
noted on this map is approximate and  
subject to change; the final boundary  
may be affected by requirements of  
State and Federal agencies and by  
actual field conditions. The actual  
Project Boundary Line will be established  
by field survey during the purchase of  
each parcel of property.

July 18, 2019

Fannin County GIS Parcel Data - Texas County GIS Data



# ROADS & BRIDGES

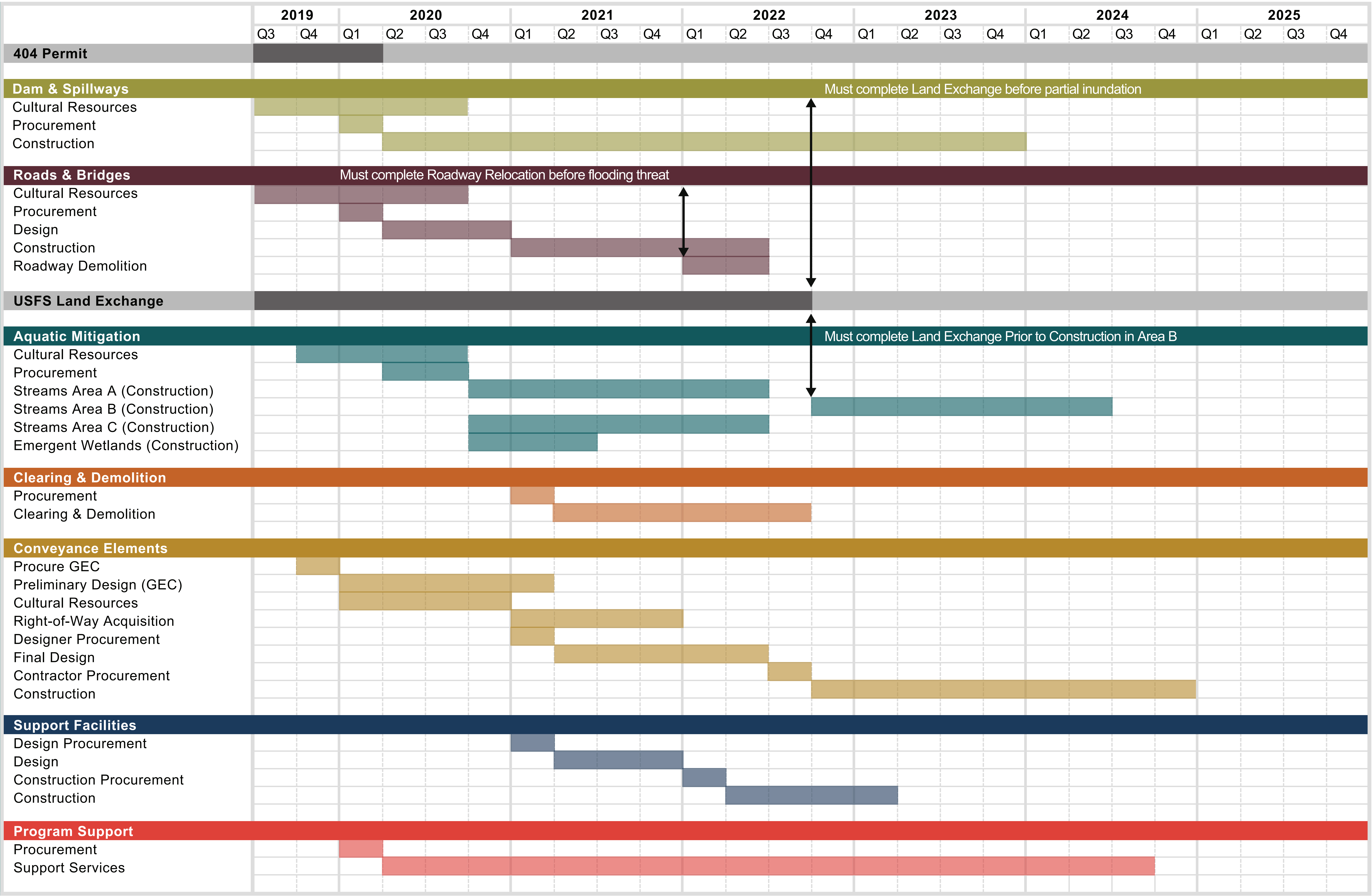
## OVERVIEW:

- FM 1550 Relocation = 2.7 miles
- SH 34 Relocation Length = 3 miles
  - Bridge at North Sulphur River = 6,000 ft.
  - Bridge at Merrill Creek = 600 ft.
  - Overall Width of Bridge Section = 58 ft.
  - Min. Clearance at Main Channel = 40 ft.
- Termination of 10 county roads





# PROJECT SCHEDULE





# SUPPORT FACILITIES

## OVERVIEW:

### *Lake Headquarters & Administration Facilities*

- Located on SH 34
- Lake Management & Administration
- Meeting Facility

### *Maintenance*

- Located near the Dam
- Lake, Dam & Pump Station Operations & Maintenance

