



The Terraces of WeWork

Whether it's a business meeting, team building session, quick coffee break, or festive gathering, our terraces are tailored to create a refreshing and vibrant atmosphere, ensuring a lasting impression. Each location boasts a unique charm and commitment to simplified planning, offering you:



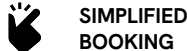
Conveniently located in the heart of top cities across the US, including New York, Miami, Dallas, Los Angeles, San Diego, and Washington DC.



Soak in picturesque backdrops of city skylines, iconic landmarks, and tranquil river views, guaranteeing memorable moments for members.



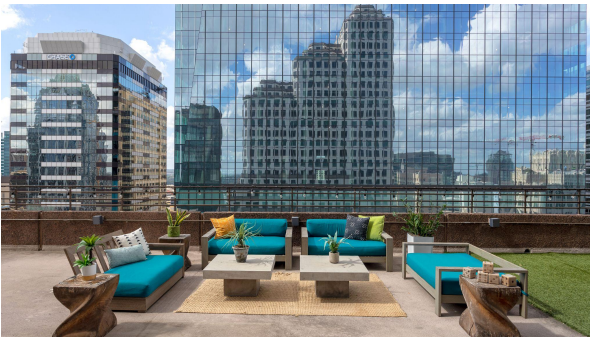
Personalize our terraces with your own design and aesthetic, creating the perfect ambiance for both corporate and social gatherings.



Whether you're securing one or multiple locations, streamline your planning process with one reliable point of contact, making booking a breeze.



Choose WeWork with confidence as your go-to solution for event venue needs. We are committed to the success of your event, offering a dedicated and steadfast partnership every step of the way.



wework

© 2024 WeWork. The WeWork trademark and related logos are the property of WeWork Companies LLC. Any reference to third-party names are for reference and informational purposes only and should not be considered an endorsement or association of WeWork or vice versa. Photographs contained herein may be representative examples of various WeWork locations and do not necessarily depict the WeWork location referenced. While reasonable efforts have been made to check the accuracy of the information contained here, WeWork, its officers, employees, directors, and representatives, make no warranty, express or implied, regarding the accuracy of the information and disclaim any liability arising from the use of the information contained herein. All dimensions are approximate and subject to variances. It is your obligation to independently verify the particulars of the property. WeWork reserves the right to make changes.

Summary

Building	City, State	Location	Max Capacity*	Sq Footage	Availability	Permit Reqs
600 Congress Ave	Austin, TX	16th Floor	Terrace 183 Lounge 91	Terrace 3,048 Lounge 1,685	Mon-Fri after 6pm Sa-Su any time	Permit req'd over 49p
625 W Adams	Chicago, IL	19th Floor	300	Terrace 2,336 Lounge 3,941	Mon-Fri after 6pm Sa-Su any time	Permit req'd over 49p
1920 McKinney Ave	Dallas, TX	8th Floor	49	Terrace 607 Lounge 1,070	Mon-Fri after 6pm Sa-Su any time	N/A
Lightwell	Kansas City, MO	4th Floor	100	Terrace 7,800 Lounge 5,934	Mon-Fri after 6pm Sa-Su any time	N/A
312 Arizona Ave	Los Angeles, CA	2nd Floor	Terrace A 49 Terrace B 49 Lounge 71	Terrace A 946 Terrace B 845 Lounge 1,700	Mon-Fri after 6pm Sa-Su any time	N/A
Giralda Place	Miami, FL	6th Floor	Terrace 262 Lounge 64	Terrace 4,372 Lounge 1,633	Mon-Fri after 6pm Sa-Su any time	Permit req'd over 171p

*If Lounge capacity < Terrace capacity, please be mindful that an indoor weather contingency plan may not be possible and the event date may need to be adjusted.

Summary

Building	City, State	Location	Max Capacity*	Sq Footage	Availability	Permit Reqs
2222 Ponce de Leon	Miami, FL	3rd Floor	Terrace 188 Lounge 113	Terrace 2,570 Lounge 1,275	Mon-Fri after 6pm Sa-Su any time	N/A
Brickell City Centre	Miami, FL	5th Floor	147	Terrace 2,445 Lounge 2,337	Mon-Fri after 6pm Sa-Su any time	Permit req'd over 49p
729 N Washington Ave	Minneapolis, MN	6th Floor	166	Terrace 2,869 Lounge 3,233	Mon-Fri after 6pm Sa-Su any time	N/A
18th & Chet	Nashville, TN	10th Floor	49	Terrace 700 Lounge 1,342	Mon-Fri after 6pm Sa-Su any time	N/A
1460 Broadway	New York City, NY	17th Floor	240	Terrace 3,860 Lounge 2,810	Mon-Fri after 6pm Sa-Su any time	N/A
575 Lexington	New York City, NY	14th Floor	158	Terrace 2,635 Lounge 3,606	Mon-Fri after 6pm Sa-Su any time	Permit req'd over 74p

*If Lounge capacity < Terrace capacity, please be mindful that an indoor weather contingency plan may not be possible and the event date may need to be adjusted.

Summary

Building	City, State	Location	Max Capacity*	Sq Footage	Availability	Permit Reqs
Innovation Pointe	Salt Lake City, UT	5th Floor	Terrace A 137 Terrace B 41 Lounge 49	Terrace A 2,694 Terrace B 261 Lounge 1,853	Mon-Fri after 6pm Sa-Su any time	N/A
600 B St	San Diego, CA	3rd Floor	Terrace 317 Lounge 49	Terrace 6,869 Lounge 1,578	Mon-Fri after 6pm Sa-Su any time	Permit req'd over 49p
600 California St	San Francisco, CA	11th Floor	49	Terrace 1,020 Lounge 1,355	Mon-Fri 6pm - 10pm Sa-Su any time	N/A
Marine Gateway	Vancouver, BC	18th Floor	59	Terrace 2,327 Lounge 3,703	Mon-Fri after 6pm Sa-Su any time	N/A
1201 Wilson	Washington, D.C.	27th Floor	119	Terrace 1,785 Lounge 4,445	Mon-Fri after 6pm Sa-Su any time	N/A

*If Lounge capacity < Terrace capacity, please be mindful that an indoor weather contingency plan may not be possible and the event date may need to be adjusted.

wework

Austin

600 Congress Ave, Austin

16th Floor Terrace & Lounge

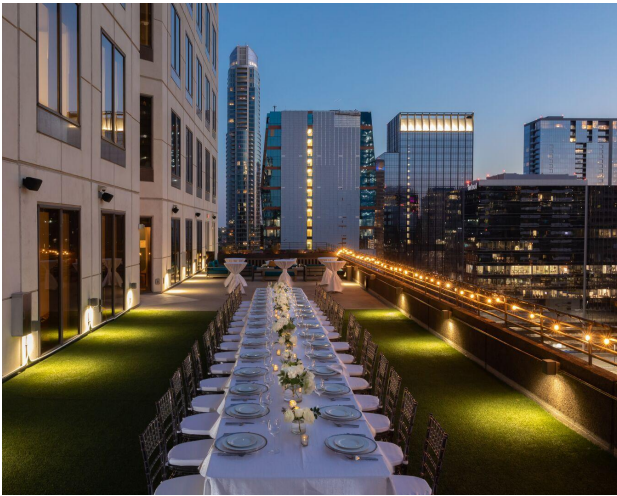
Max Capacity*	Terrace 183
	Lounge 91
Sq Ft	Terrace 3,048
	Lounge 1,685
Availability	Mon-Fri after 6pm Sa-Su any time

View floor plan on the next page

Additional details

(*) Permit required over 49
Consider indoor max capacity in case of inclement weather

Details



Nestled in the heart of downtown Austin, this unique space exudes individuality at every turn—with interior designs inspired by Wes Anderson films, hip-hop lyrics adorning the walls to fuel your drive, it's a haven that pays homage to the vibrant music scene that defines this city. The expansive private outdoor terrace offers breathtaking views of the Austin city skyline, providing the perfect backdrop for outdoor concerts, happy hours, and social gatherings. When you need a quiet moment to unwind, the 16th-floor common area offers a tranquil indoor retreat to the eclectic and lively atmosphere of downtown Austin. And with convenient amenities like parking, secure bike storage, and easy access to public transportation, everything you need is right at your fingertips.

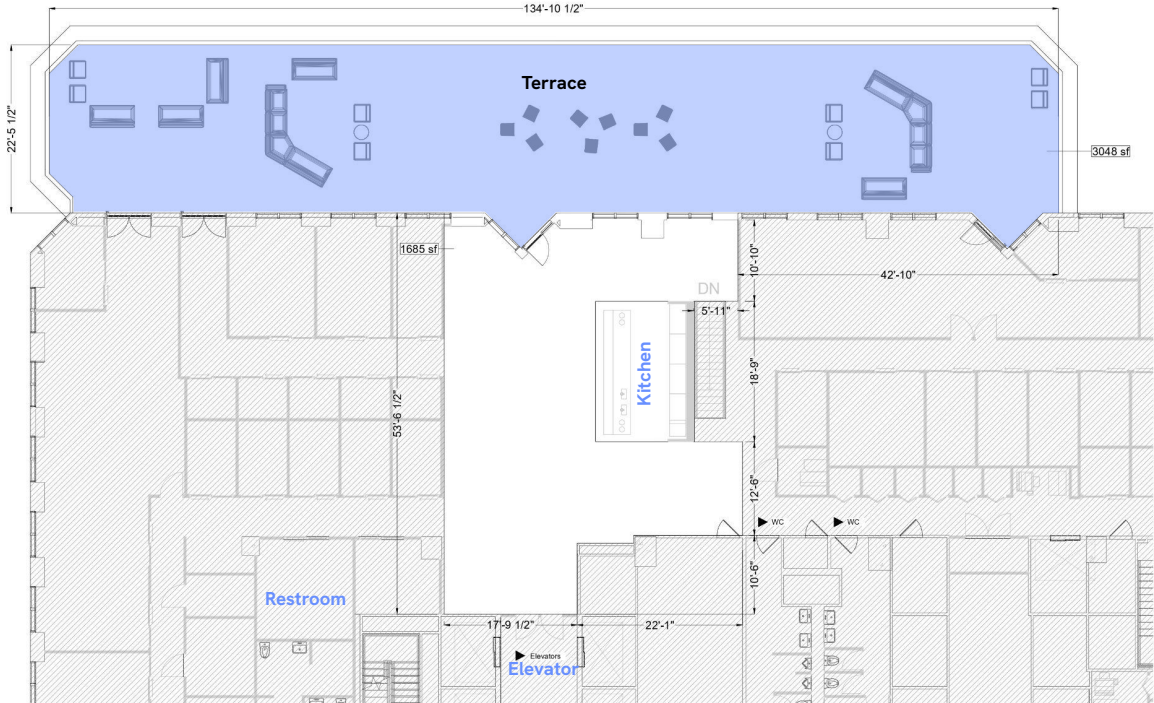
What's included

Furniture can be rearranged	Internal breakout rooms	Wi-Fi	Projector and screen	Speakers	Microphone	Whiteboard	Pantry access	Terrace access	Parking
Yes	-	Yes	Yes (Lounge)	Yes (Lounge)	-	-	Yes	Yes	Paid

wework

© 2024 WeWork.

16th Floor Terrace & Lounge



wework

Chicago

625 West Adams St, Chicago

19th Floor Terrace

Max Capacity	300
Sq Ft	Terrace 2,336 Lounge 3,941
Availability	Mon-Fri after 6pm Sa-Su any time

View floor plan on the next page

Additional details

(*) Permit required over 49



Details

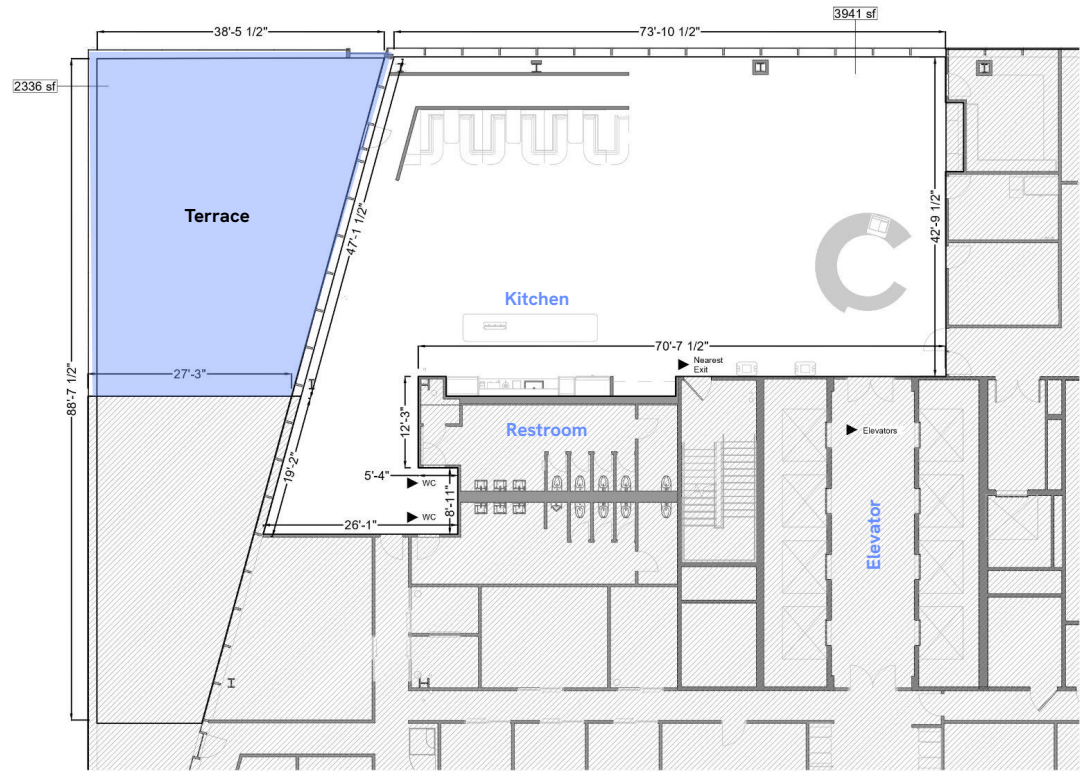
Immerse yourself in the vibrant energy of Chicago's West Loop—a bustling neighborhood known for its trendy restaurants, thriving arts scene, and a diverse business community.

Step outside to this urban oasis and be greeted by stunning views of the iconic Chicago skyline. Whether you're hosting a team meeting, networking event, or simply taking a break from your workday, the outdoor terrace provides a versatile space to connect, collaborate, and unwind. With comfortable seating, ample space, the towering cityscape as your backdrop, and an invigorating atmosphere, this private outdoor terrace is the perfect place to enjoy the beauty of the city while embracing the creativity and innovation that Chicago is known for.

What's included

Furniture can be rearranged	Internal breakout rooms	Wi-Fi	Projector and screen	Speakers	Microphone	Whiteboard	Pantry access	Terrace access	Parking
Yes	-	Yes	Yes (Lounge)	Yes (Lounge)	-	-	Yes	Yes	Yes

19th Floor Terrace



wework

Dallas

8th Floor Terrace & Lounge

Max Capacity	49
Sq Ft	Terrace 607 Lounge 1,070
Availability	Mon-Fri after 6pm Sa-Su any time

View floor plan on the next page

Details



Located at the core of a highly-coveted, upscale neighborhood, this space embodies the funky, energetic vibe and lively atmosphere Dallas is known for. With a blend of pop art and contemporary design, creativity flows freely, fostering an environment where innovation thrives. At WeWork Uptown, discover a unique experience centered around its captivating outdoor terrace. This location is perfectly situated in walking distance to endless entertainment options, with nearby museums, concert halls, and theaters. Event planners and guests can enjoy upscale dining options conveniently located within the building.

What's included

Furniture can be rearranged	Internal breakout rooms	Wi-Fi	Projector and screen	Speakers	Microphone	Whiteboard	Pantry access	Terrace access	Parking
Yes	-	Yes	Yes (Lounge)	Yes (Lounge)	-	-	Yes	Yes	Paid

8th Floor Terrace & Lounge

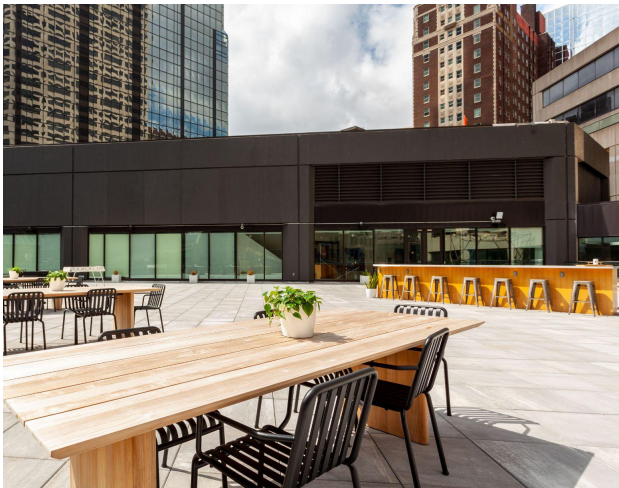


Kansas City

4th Floor Terrace & Lounge

Max Capacity	100
Sq Ft	Terrace 7,800 Lounge 5,934
Availability	Mon-Fri after 6pm Sa-Su any time

View floor plan on the next page



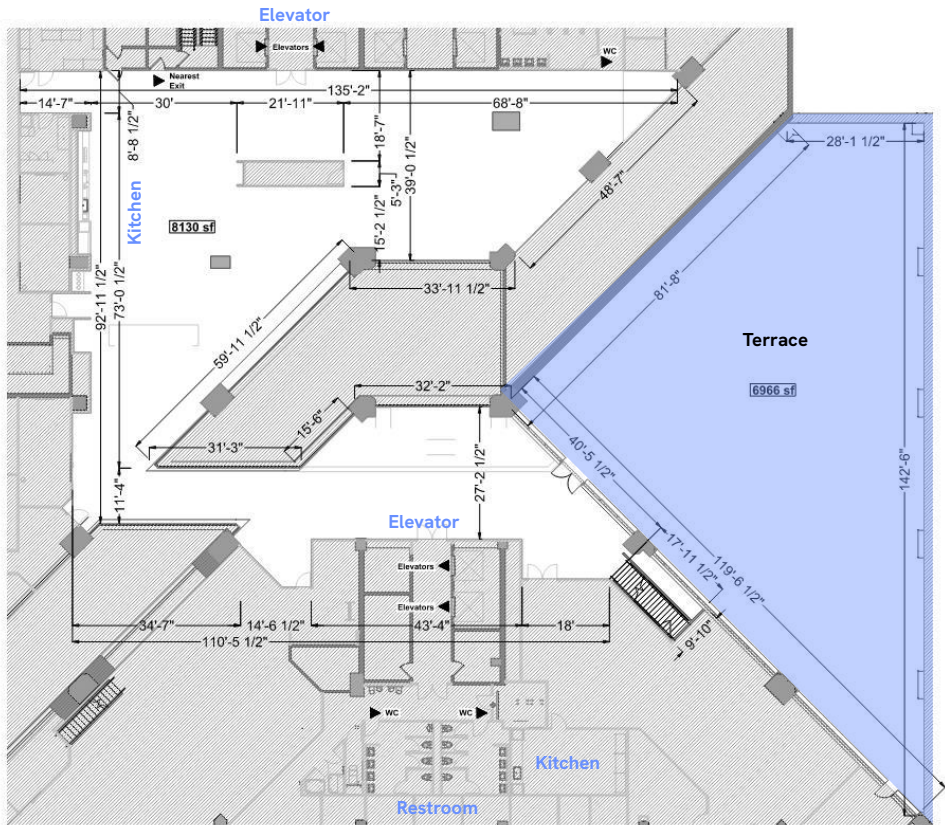
[Details](#)

Situated in the heart of the financial district, the Lightwell building embraces Kansas City’s rich history and vibrant spirit, with its contemporary design and subtle nod to the past. Unwind on the massive outdoor patio, a hidden gem above the bustling streets of downtown Kansas City. Here, within the historic charm of this 30-story skyscraper, find a tranquil retreat that offers panoramic views of the city as you chat and connect with fellow movers and shakers. And after an alfresco happy hour, guests can take a stroll to browse the stalls at River Market, explore restaurants in the Power & Light District, or catch a concert with at the T-Mobile Center arena, just a five minute walk away.

What’s included

Furniture can be rearranged	Internal breakout rooms	Wi-Fi	Projector and screen	Speakers	Microphone	Whiteboard	Pantry access	Terrace access	Parking
Yes	-	Yes	Yes (Lounge)	Yes (Lounge)	-	-	Yes	Yes	Paid

4th Floor Terrace & Lounge



wework

Los Angeles

312 Arizona Ave, Los Angeles

2nd Floor Terraces & Lounge

Max Capacity

Terrace A	946
Terrace B	845
Lounge	1,700

Sq Ft

Terrace A	49
Terrace B	49
Lounge	71

Availability

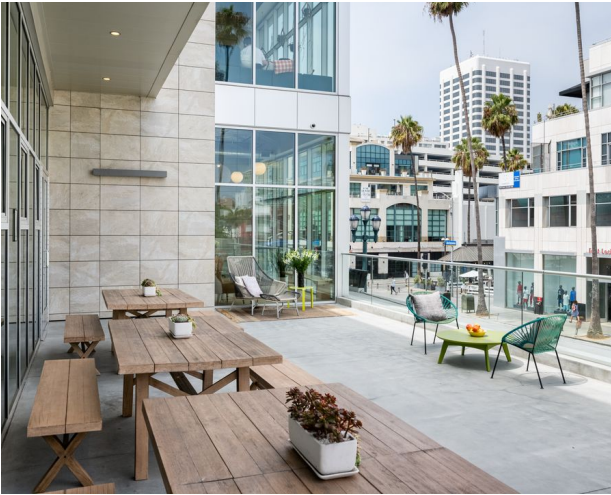
Mon-Fri after 6pm
Sa-Su any time

View floor plan on the next page

[Additional details](#)

There are 2 separate terraces included in this rental

[Details](#)



Just steps from Santa Monica's famous Third Street Promenade, and only a couple of blocks from the beach, this workspace boasts a truly unbeatable location. Featuring trendy, one-of-a-kind artworks and floor-to-ceiling windows that flood this space with gorgeous natural light, WeWork Promenade is a modern coastal dream.

Step outside to one of two outdoor spaces to soak in the California sunshine as palm trees sway in the ocean breeze, and Pacific views unfold before you.

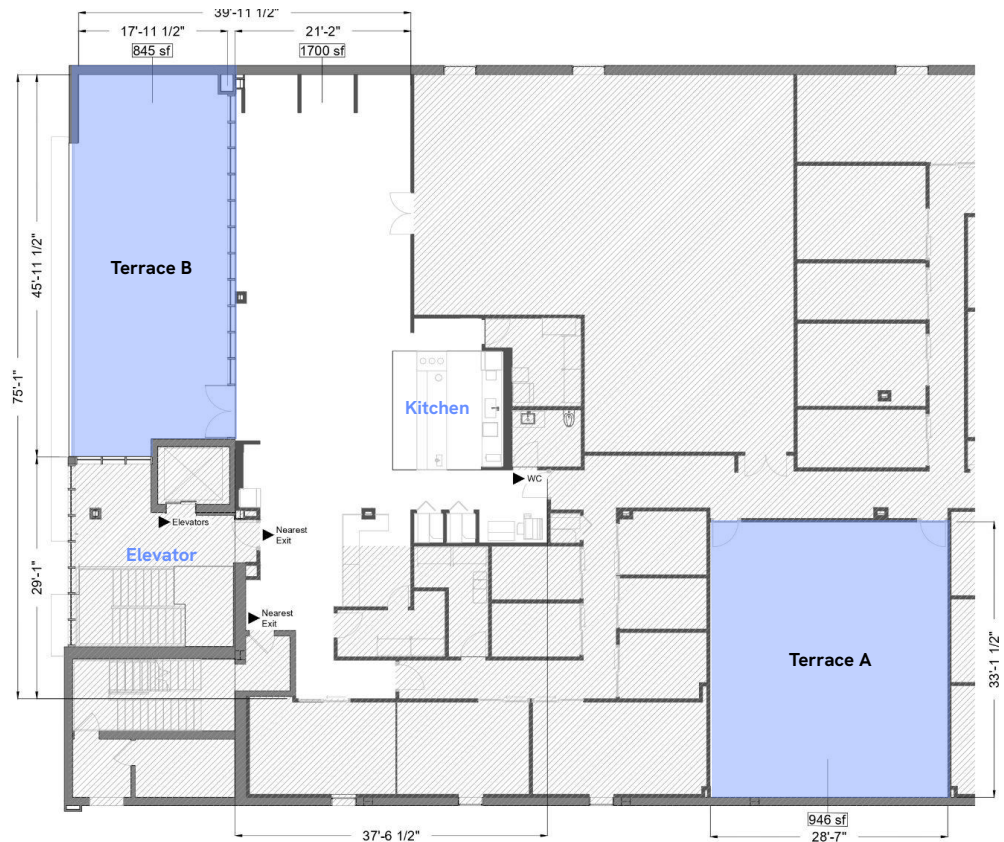
[What's included](#)

Furniture can be rearranged	Internal breakout rooms	Wi-Fi	Projector and screen	Speakers	Microphone	Whiteboard	Pantry access	Terrace access	Parking
Yes	-	Yes	Yes (Lounge)	Yes (Lounge)	-	-	Yes	Yes (2)	-

wework

© 2024 WeWork.

2nd Floor Terraces & Lounge



Restrooms

Note: Restrooms accessible down the hall past the lounge space.

wework

Miami

6th Floor Terrace & Lounge

Max Capacity*	Terrace 262 Lounge 64*
Sq Ft	Terrace 4,372 Lounge 1,633
Availability	Mon-Fri after 6pm Sa-Su any time

View floor plan on the next page

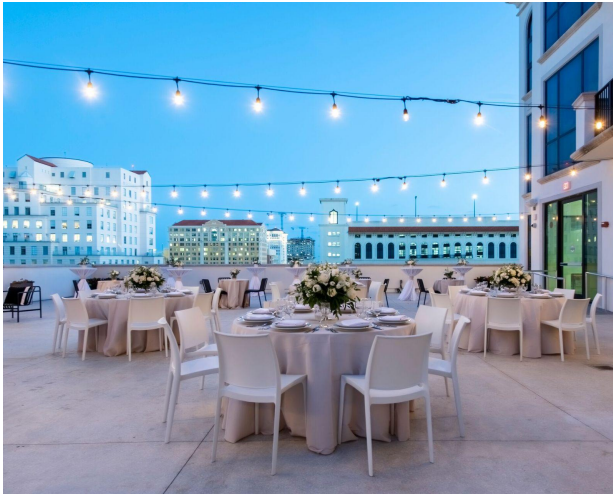
Additional details

(*) Permit required over 171p; must be filed 30 days prior to event
Consider indoor max capacity in case of inclement weather

No loud noise after 11pm

Cooking not permitted

Details

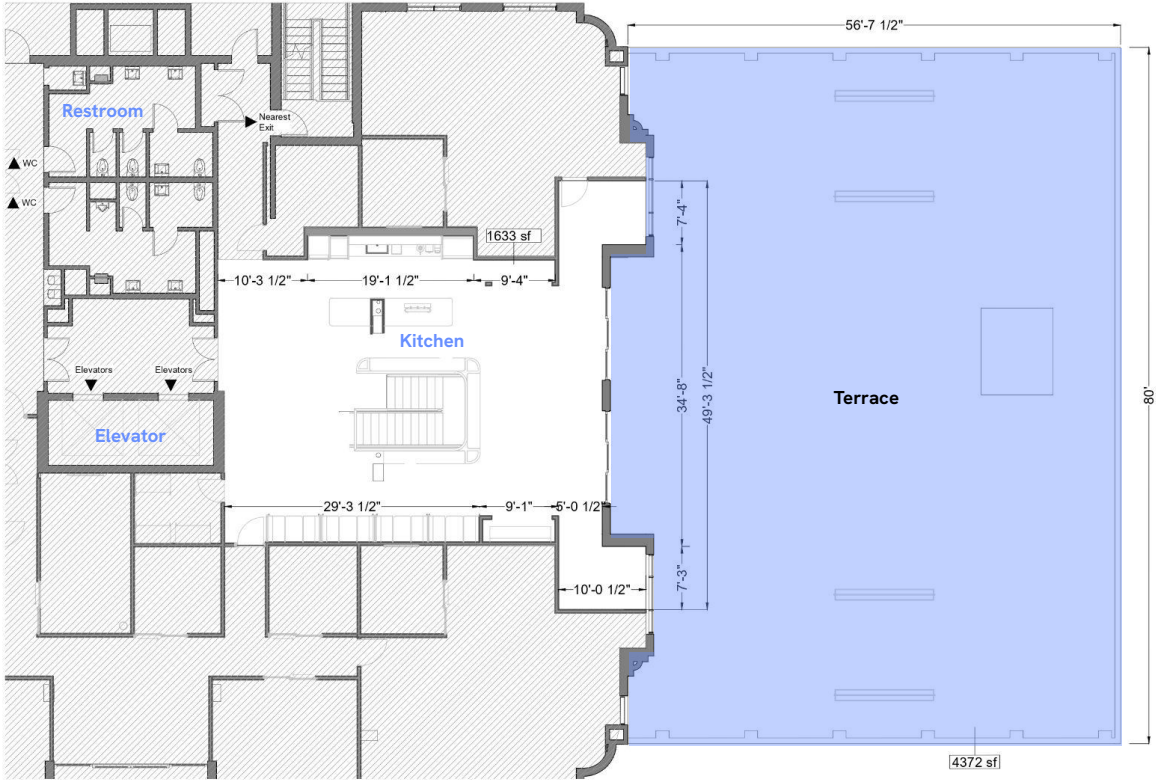


Nestled in the heart of this iconic Miami suburb, The Giralda Place is an iconic location where the city's rich history and charming culture come alive. This space offers a unique blend of vintage charm, history, and sleek modern design. The massive outdoor courtyard is a true reflection of the city's artistic spirit, offering options to personalize your event with details like custom floor mural, shuffleboard designs, and bistro lights for a warm, cozy glow.

What's included

Furniture can be rearranged	Internal breakout rooms	Wi-Fi	Projector and screen	Speakers	Microphone	Whiteboard	Pantry access	Terrace access	Parking
Yes	-	Yes	Yes (Lounge)	Yes (Lounge)	-	-	Yes	Yes	Paid

6th Floor Terrace & Lounge



3rd Floor Terrace & Lounge

Max Capacity*	Terrace 188
	Lounge 113
Sq Ft	Terrace 2,570
	Lounge 1,275
Availability	Mon-Fri after 6pm Sa-Su any time

View floor plan on the next page

Additional details
No loud noise after 11pm

Cooking not permitted

Consider indoor max capacity in case of inclement weather

Details

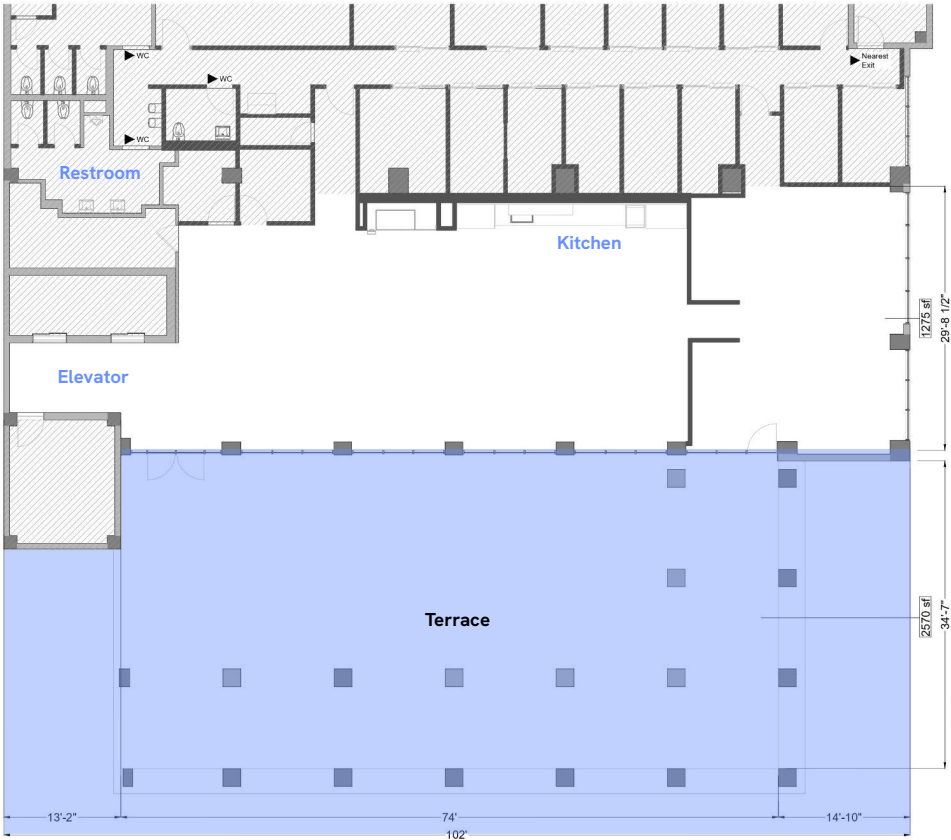


Situated in one of Miami’s oldest and most historic neighborhoods, WeWork Ponce De Leon is brimming with Spanish-style architecture, custom art, and old-school charm. The Ponce De Leon terrace design was inspired by the city of Coral Gables, featuring warm tones, mediterranean charm, lush foliage, ample seating, and inviting furnishings. Give your event a picturesque backdrop and step outside to soak in the Florida sun, or toast under the warm bistro lights and stars at night. The entertainment doesn’t stop there—right downstairs you’ll find popular restaurants, trendy bars, and inspiring arts institutions for guests to explore and enjoy.

What’s included

Furniture can be rearranged	Internal breakout rooms	Wi-Fi	Projector and screen	Speakers	Microphone	Whiteboard	Pantry access	Terrace access	Parking
Yes	-	Yes	Yes (Lounge)	Yes (Lounge)	-	Yes	Yes	Yes	Paid

3rd Floor Terrace & Lounge



5th Floor Terrace & Lounge

Max Capacity*	147
Sq Ft	Terrace 2,445 Lounge 2,337
Availability	Mon-Fri after 6pm Sa-Su any time

View floor plan on the next page

Additional details

(*) Permit required over 49p; must be filed 30 days prior to event

No loud noise after 11pm

Cooking not permitted



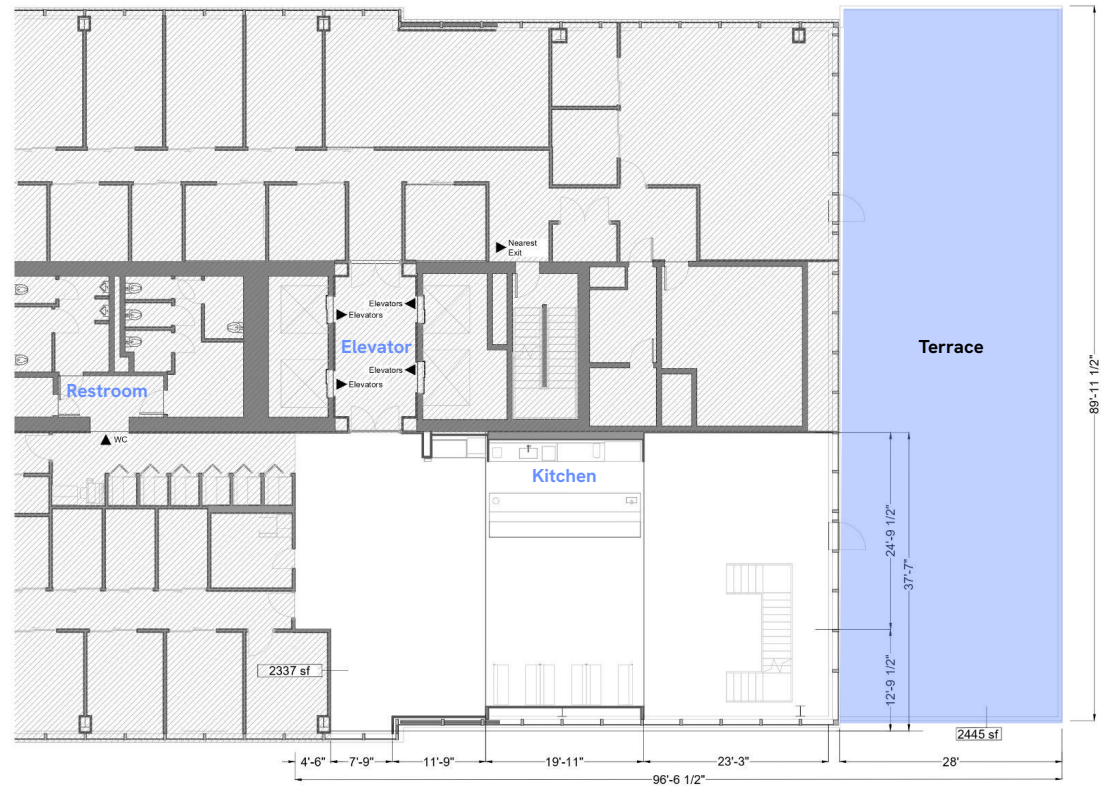
[Details](#)

Amongst the sleek skyscrapers, bustling financial district, and vibrant cultural scene of Miami, WeWork Brickell City Centre offers a blend of quiet, modern luxury and cosmopolitan charm. With breathtaking views of the Miami skyline and the South American-inspired outdoor patio offers a refreshing escape above the buzzing of Miami's most thriving urban neighborhood. Plus, with direct access to Brickell City Centre's upscale shopping, dining, and entertainment options, you'll find everything you need right at your doorstep.

What's included

Furniture can be rearranged	Internal breakout rooms	Wi-Fi	Projector and screen	Speakers	Microphone	Whiteboard	Pantry access	Terrace access	Parking
Yes	-	Yes	Yes (Lounge)	Yes (Lounge)	-	-	Yes	Yes	Paid

5th Floor Terrace & Lounge



Minneapolis

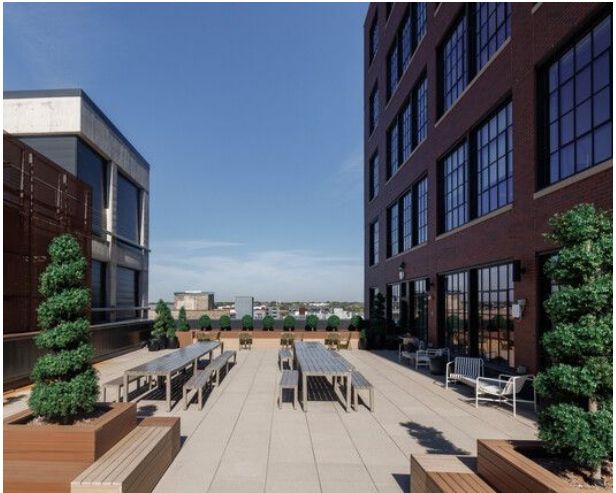
6th Floor Terrace & Lounge

Max Capacity	166
Sq Ft	Terrace 2,869 Lounge 3,233
Availability	Mon-Fri after 6pm Sa-Su any time

View floor plan on the next page

[Additional details](#)
No wifi on Terrace

[Details](#)

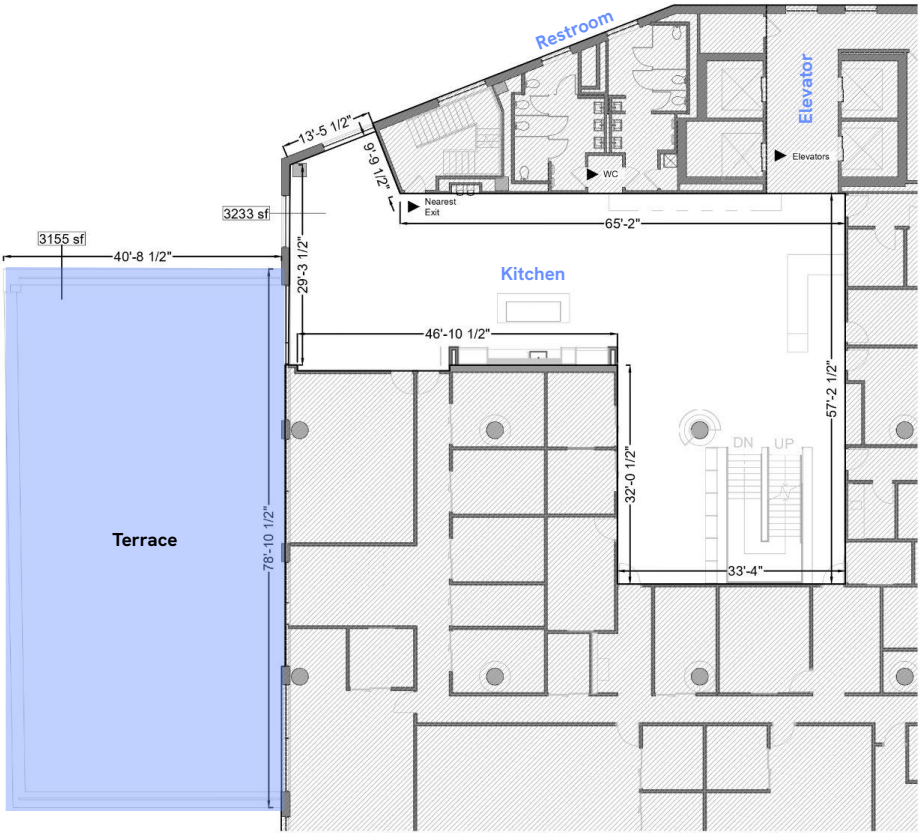


Situated in the center of North Loop’s vibrant creative scene, 729 N Washington Ave is an ideal location for anyone hoping to take advantage of Minneapolis’s energetic startup culture. The true standout of this building is the 6th floor terrace, with cafe-style seating, picnic benches, and plenty of lounge space for corporate and social events alike. Find a mix of work and play in this eclectic neighborhood just minutes away from the banks of the Mississippi River and Target Field.

What’s included

Furniture can be rearranged	Internal breakout rooms	Wi-Fi	Projector and screen	Speakers	Microphone	Whiteboard	Pantry access	Terrace access	Parking
Yes	Yes (Lounge)	Yes	Yes (Lounge)	Yes (Lounge)	Yes (Lounge)	-	Yes	Yes	Paid

6th Floor Terrace & Lounge



wework

Nashville

18th & Chet, Nashville

10th Floor Terrace & Lounge

Max Capacity 49

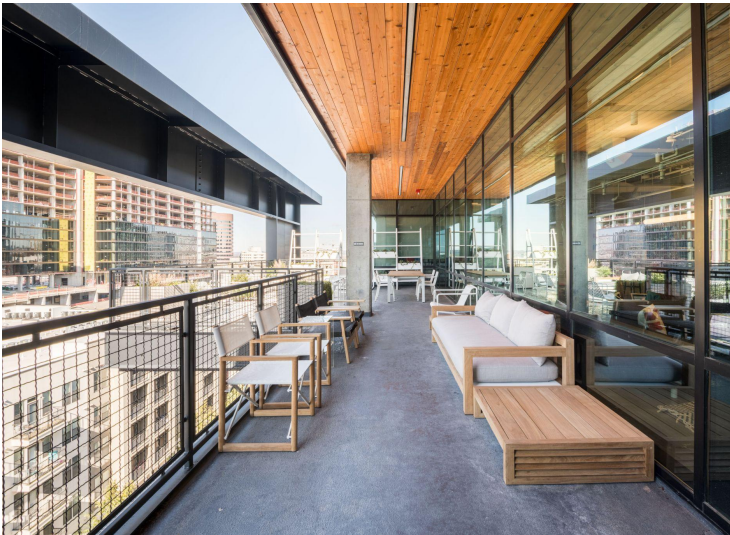
Sq Ft Terrace 700
Lounge 1,342

Availability Mon-Fri after 6pm
Sa-Su any time

View floor plan on the next page

Additional details

Only one outlet available



Details

Find your space in the heart of Nashville’s historic music scene. Surrounded by recording studios, publishing houses, and legendary music stages, our 18th & Chet location is in the center of Music Row, with soaring views of the encircling neighborhood. Enjoy the warmth and bustle of commercial Nashville on our outdoor terrace, featuring tables for working or eating al fresco, as well as plenty of lounge space for team gatherings, happy hours, or showing clients all the city has to offer.

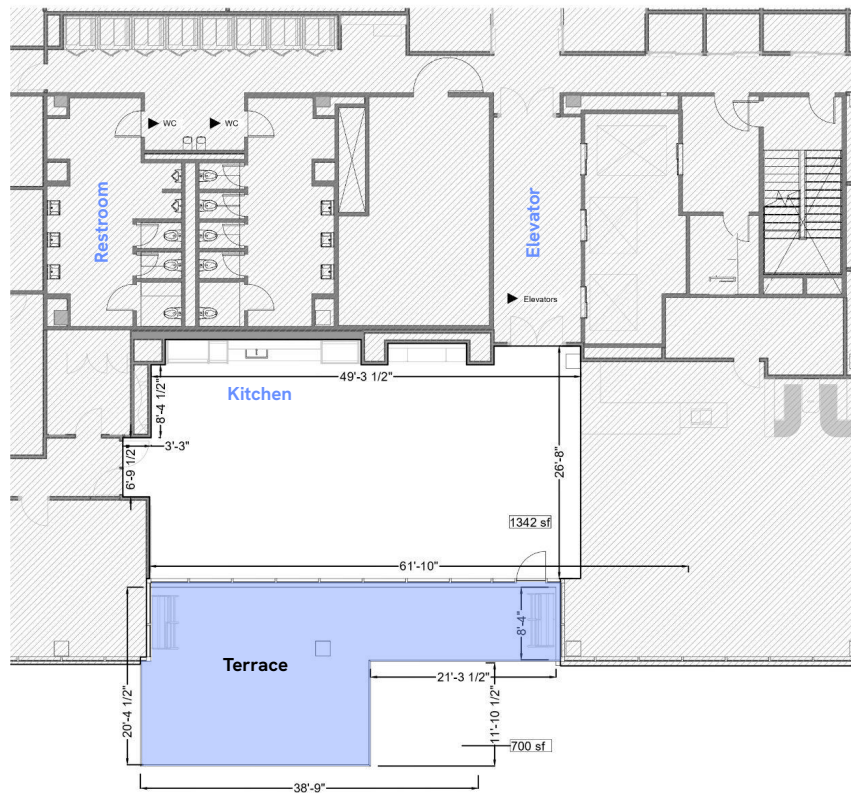
What’s included

Furniture can be rearranged	Internal breakout rooms	Wi-Fi	Projector and screen	Speakers	Microphone	Whiteboard	Pantry access	Terrace access	Parking
Yes	-	Yes	Yes (Lounge)	Yes (Lounge)	-	-	Yes	Yes	Paid

wework

© 2024 WeWork.

10th Floor Terrace & Lounge



wework

New York City

1460 Broadway in Times Square

17th Floor Terrace & Lounge

Max Capacity	240
Sq Ft	Terrace 3,860 Lounge 2,810
Availability	Mon-Fri after 6pm Sa-Su any time

View floor plan on the next page

[Additional details](#)

Projector with HDMI cable included for visual presentation only.

[Details](#)



Conveniently located in the center of Times Square in New York City, 1460 Broadway occupies 13 full floors of this office building. The space pulls inspiration from the surrounding neighborhood, featuring colorful artwork, neon signs, funky patterned walls and floors, and even a custom marquee movie sign—all paying homage to the famed theatre district. But the best part? Escaping the midtown madness and spending the day outside on the massive wrap-around rooftop terrace (which is an impressive 3,882 square feet), enjoying the incredible views spanning from Times Square (even the New Year’s Eve ball!) to Bryant Park. There’s plenty of space, seating for lounging or lunch-ing, and even a large grassy area.

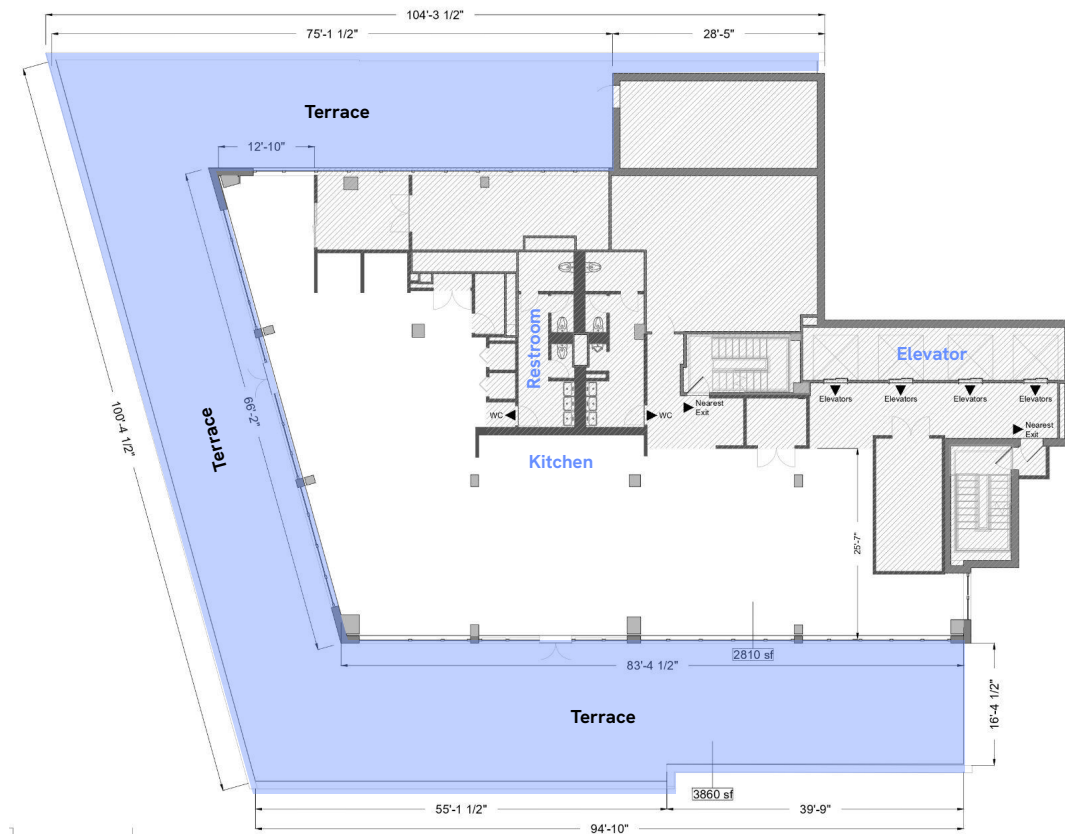
[What’s included](#)

Furniture can be rearranged	Internal breakout rooms	Wi-Fi	Projector and screen	Speakers	Microphone	Whiteboard	Pantry access	Terrace access	Parking
Yes	Yes	Yes	Yes (Lounge)	Yes (Lounge)	Yes (Lounge)	Yes (Lounge)	Yes (Lounge)	Yes	-

wework

© 2024 WeWork.

17th Floor Terrace & Lounge



575 Lexington Avenue in Midtown East

14th Floor Terrace & Lounge

Max Capacity*	158
Sq Ft	Terrace 2,635 Lounge 3,606
Availability	Mon-Fri after 6pm Sa-Su any time

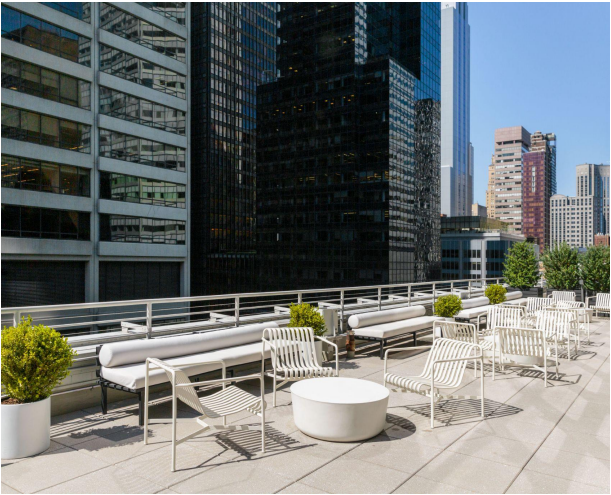
View floor plan on the next page

Additional details

No power on terrace - must run from indoors

(*) Permit required over 74p

Details

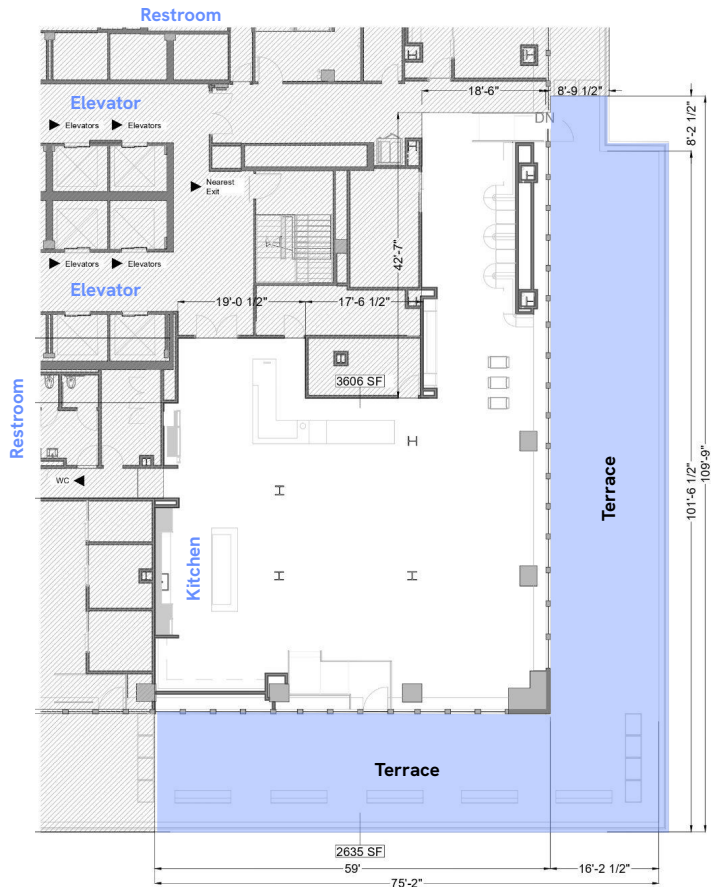


Situated in the prime location between the United Nations Headquarters and the luxury shops of Fifth Avenue, and just steps away from Grand Central Terminal, 575 Lexington is the ultimate workspace location. Offering unparalleled convenience and connectivity, this is the perfect place to host a brainstorming power hour, networking lunch, or happy hour. The beautiful outdoor space offers an escape from the hustle and bustle of the city, and invites you to breathe in a moment of tranquility amidst the iconic skyscrapers of New York.

What's included

Furniture can be rearranged	Internal breakout rooms	Wi-Fi	Projector and screen	Speakers	Microphone	Whiteboard	Pantry access	Terrace access	Parking
Yes	-	Yes	Yes (Lounge)	Yes (Lounge)	-	Yes	Yes	Yes	-

14th Floor Terrace & Lounge



Salt Lake City

1633 W Innovation Way in Lehi

5th Floor Terrace & Lounge

Max Capacity	Terrace A	137
	Terrace B	41
	Lounge	49
Sq Ft	Terrace A	2,694
	Terrace B	261
	Lounge	1,853
Availability	Mon-Fri after 6pm	
	Sa-Su any time	

View floor plan on the next page

Additional details

Terraces are booked together

Consider indoor max capacity in case of inclement weather

[Details](#)



Stunning views of the Utah mountains await at the heart of Lehi, just south of Salt Lake City proper. Our Innovation Pointe location is at the center of Lehi’s technology scene, outfitted with bright, modern lounge space and a fifth-floor terrace that looks out onto the surrounding neighborhood and the rustic landscape beyond. Guests can find a moment to soak up the sun on our terrace deck chairs, mix and mingle with city views or grab some outdoor inspiration at one of our cafe-style tables.

What’s included

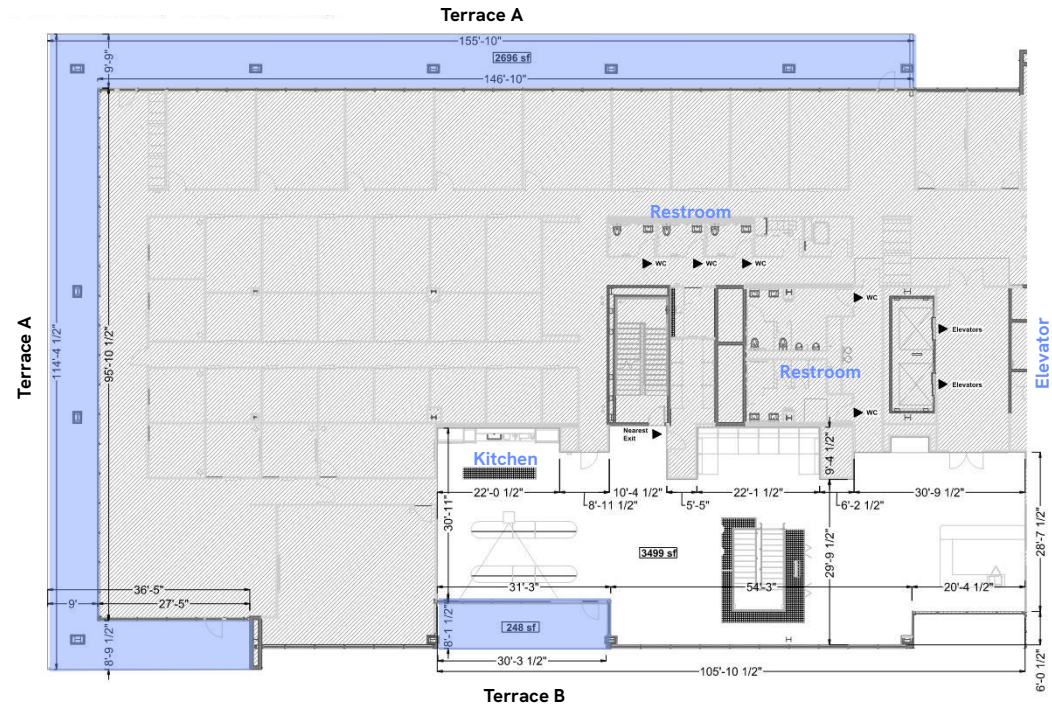
Furniture can be rearranged	Internal breakout rooms	Wi-Fi	Projector and screen	Speakers	Microphone	Whiteboard	Pantry access	Terrace access	Parking
Yes	-	Yes	Yes (Lounge)	Yes (Lounge)	-	-	-	Yes	Free

wework

© 2024 WeWork.

5th Floor Terrace & Lounge

Terrace A



wework

San Diego

600 B St in Downtown San Diego

3rd Floor Terrace & Lounge

Max Capacity*	Terrace 317
	Lounge 49
Sq Ft	Terrace 6,869
	Lounge 1,578
Availability	Mon-Fri after 6pm Sa-Su any time

View floor plan on the next page

Additional details

(*) Permit required over 49p

Soft seating, stage w/ power, lawn games, bar

Consider indoor max capacity in case of inclement weather

Details

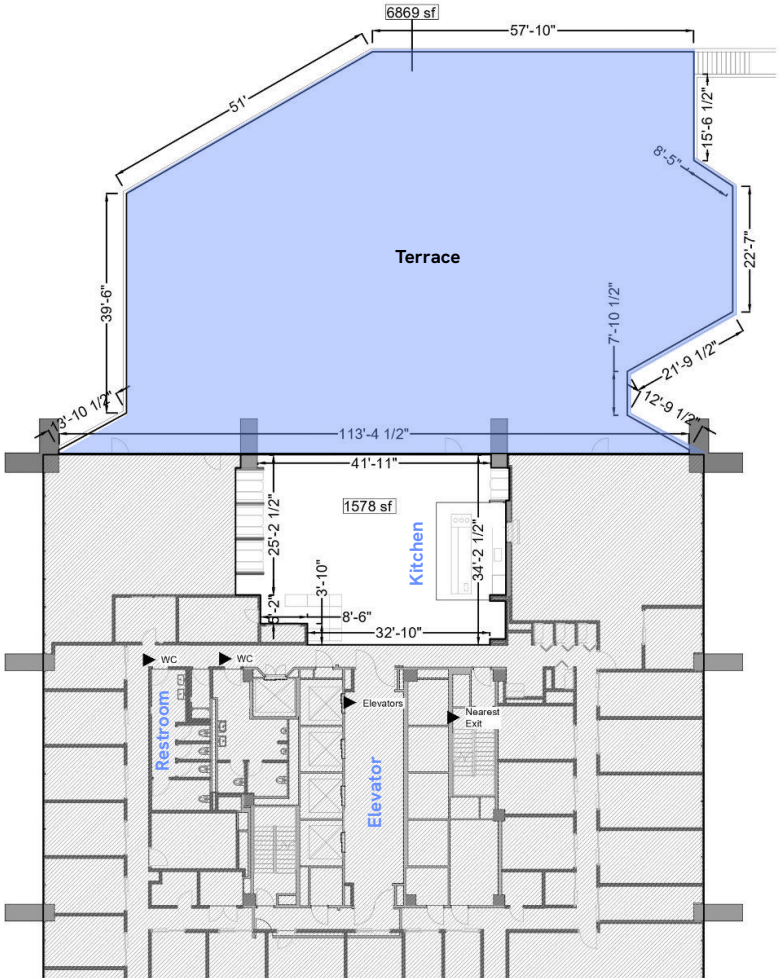


In the heart of Downtown San Diego you'll find a unique event space that blends the relaxing vibe of a beachside city with the bustle of an urban center. Welcome to 600 B Street, a modern high rise in a vibrant metropolitan neighborhood. Find an oasis with our spacious picnic-style terrace, a green space that boasts lunch tables, benches, hammocks, and lounge chairs. Get the team together for lawn games after work or host a private event on the patio before taking advantage of San Diego's lively nightlife scene.

What's included

Furniture can be rearranged	Internal breakout rooms	Wi-Fi	Projector and screen	Speakers	Microphone	Whiteboard	Pantry access	Terrace access	Parking
Yes	-	Yes	-	Yes (Lounge)	Yes (Lounge)	-	Yes	Yes	Paid

3rd Floor Terrace & Lounge



wework

Bay Area

600 California Street, San Francisco

11th Floor Terrace & Lounge

Max Capacity	49
Sq Ft	Terrace 1,020 Lounge 1,355
Availability	Mon-Fri: 6pm - 10pm Sa-Su any time before 10pm

View floor plan on the next page

Additional details

Events must conclude by 10pm due to noise ordinance

No heat lamps or open fire allowed



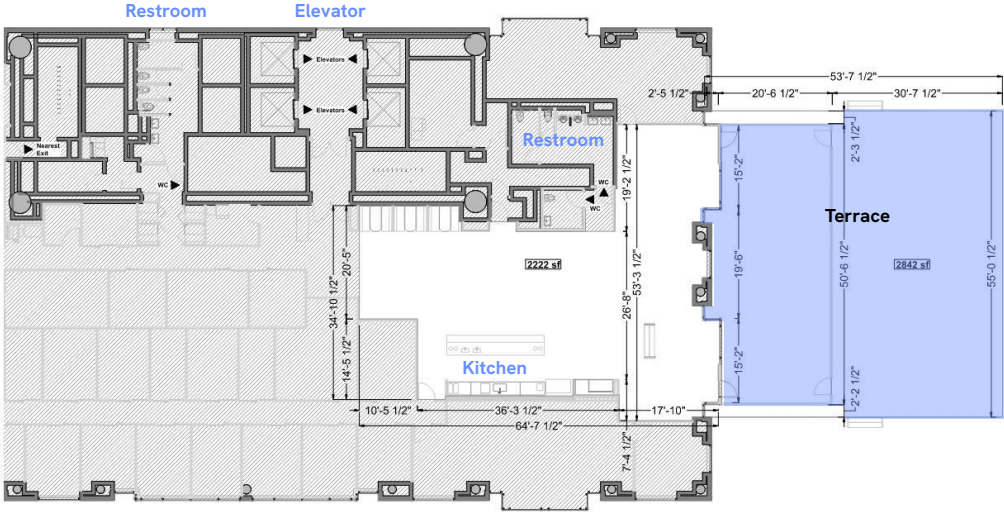
Details

Welcome to downtown San Francisco, where commerce meets culture. Nestled just blocks from the Embarcadero and stunning views of the Bay Bridge, this location on the edge of Chinatown is a melting pot of the Bay Area’s best. With an eleventh-floor terrace looking out over the city’s iconic hills, landmarks, and cable cars, 600 California Street boasts the ideal outdoor space for private events, outdoor work sessions, and networking opportunities before making the most of downtown’s renowned restaurant scene.

What’s included

Furniture can be rearranged	Internal breakout rooms	Wi-Fi	Projector and screen	Speakers	Microphone	Whiteboard	Pantry access	Terrace access	Parking
Yes	-	Yes	Yes (Lounge)	Yes (Lounge)	-	-	Yes	Yes	Paid

11th Floor Terrace & Lounge



wework

Vancouver

18th Floor Terrace & Lounge

Max Capacity 59

Sq Ft Terrace 2,327
Lounge 3,703

Availability Mon-Fri after 6pm
Sa-Su any time

View floor plan on the next page

Details

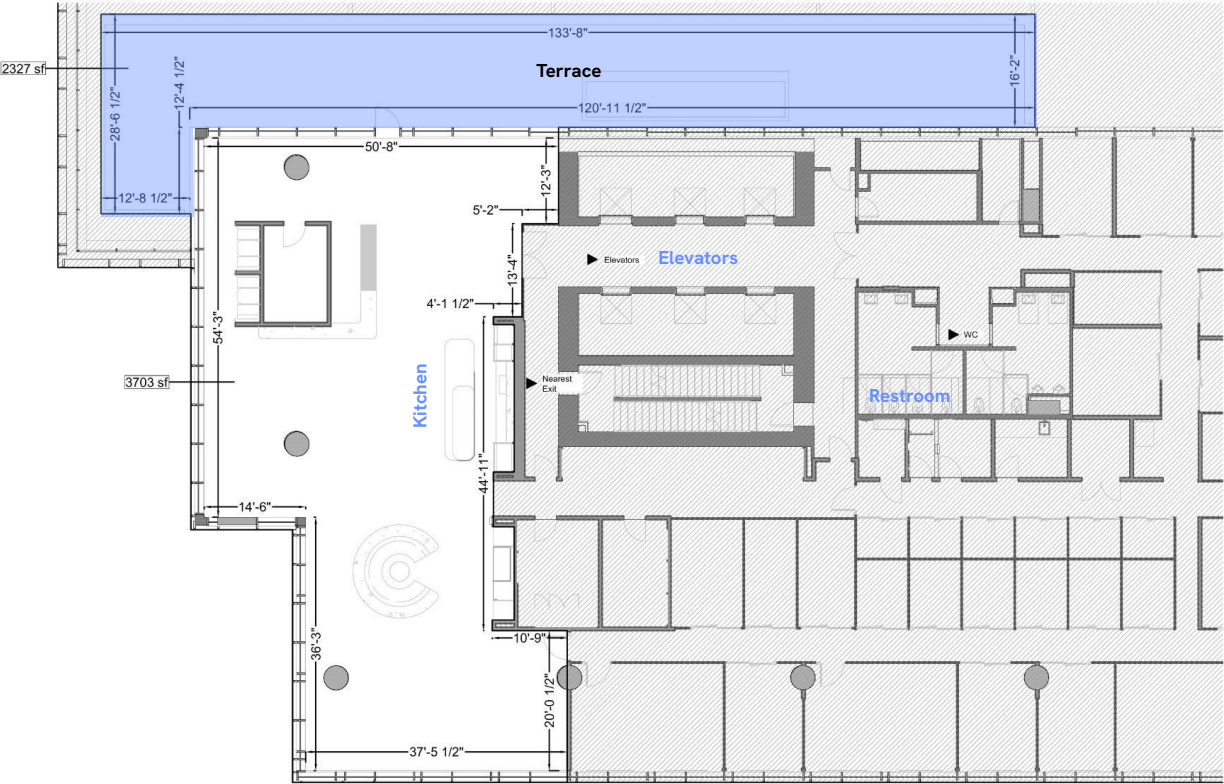


Directly in the heart of South Vancouver, our Marine Gateway location immerses you in the pulse of this rapidly-growing business scene. Spanning three floors within a sleek high-rise, this location offers you a seamless blend of convenience and style. With thoughtfully curated spaces and an outdoor terrace that flaunts panoramic views of the city skyline, Marine Gateway is a true hub of inspiration, innovation and connection. Plus, get seamless access to a variety of dining, shopping, and entertainment options right within the Marine Gateway complex—talk about convenient.

What's included

Furniture can be rearranged	Internal breakout rooms	Wi-Fi	Projector and screen	Speakers	Microphone	Whiteboard	Pantry access	Terrace access	Parking
Yes	-	Yes	Yes (Lounge)	Yes (Lounge)	-	-	Yes	Yes	Yes

18th Floor Terrace & Lounge



Washington, D.C.

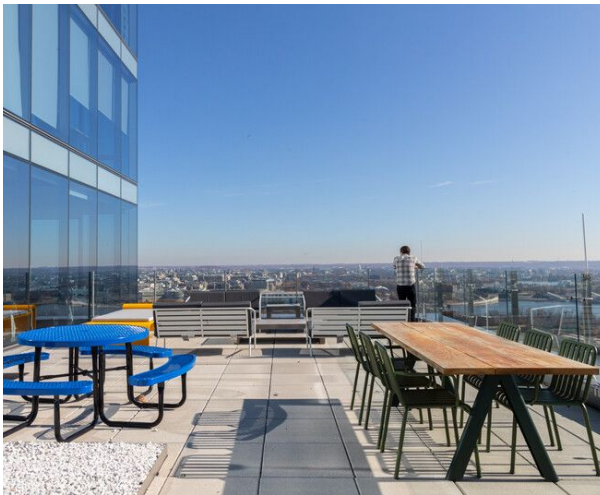
1201 Wilson Blvd, Washington, D.C.

27th Floor Terrace & Lounge

Max Capacity	119
Sq Ft	Terrace 1,785 Lounge 4,445
Availability	Mon-Fri after 6pm Sa-Su any time

View floor plan on the next page

[Details](#)

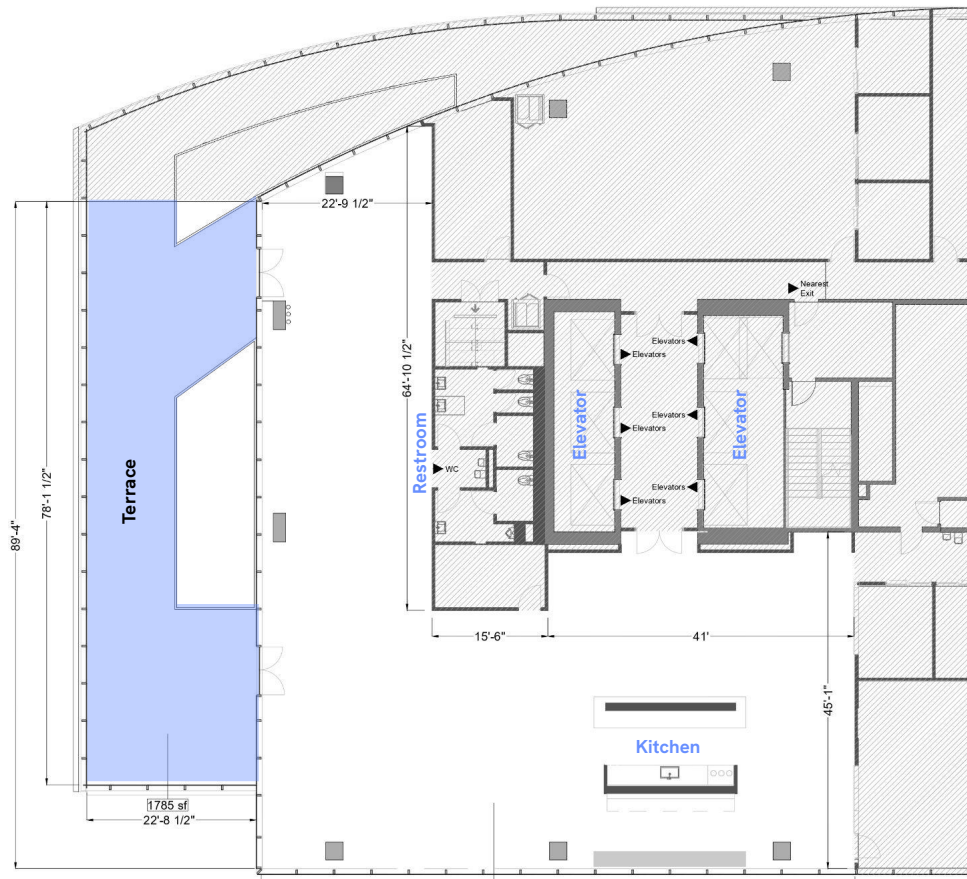


Experience the pinnacle of workspace innovation amidst the vibrant Rosslyn neighborhood at WeWork's 1201 Wilson Blvd location. Boasting not only state-of-the-art interiors but also a captivating outdoor space, this is where productivity meets serenity. Tucked within a modern high-rise building, this space offers an effortless blend of indoor and outdoor environments. Step outside onto our meticulously designed terrace, where Washington, D.C.'s iconic landmarks and city skyline provide the backdrop for your most inspired work sessions, networking opportunities, and celebrations.

What's included

Furniture can be rearranged	Internal breakout rooms	Wi-Fi	Projector and screen	Speakers	Microphone	Whiteboard	Pantry access	Terrace access	Parking
Yes	-	Yes	Yes (Lounge)	Yes (Lounge)	-	-	Yes	Yes	Paid

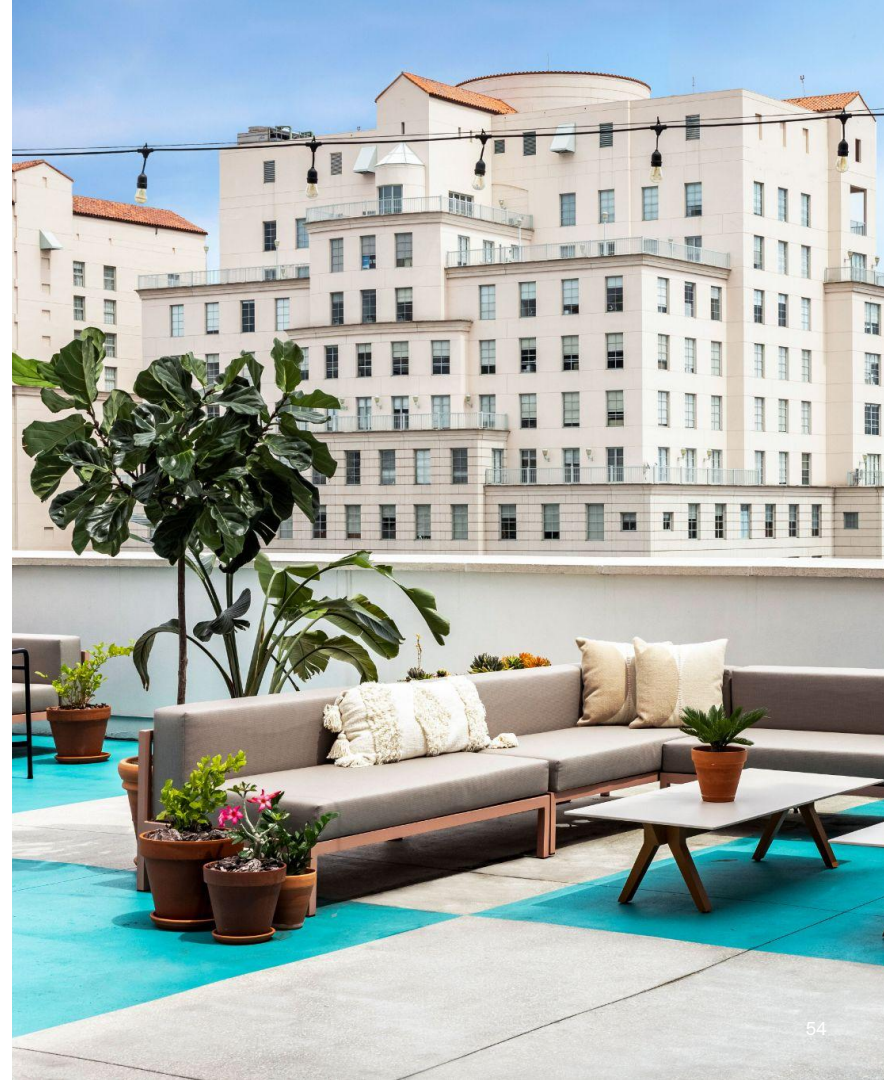
27th Floor Terrace & Lounge



Contact us

To learn more from a WeWork event expert, email:

events@wework.com





Thank You