

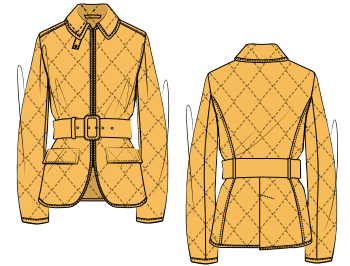
AnotherTomorrow

FALL/WINTER 2023

AUGUST



A423OW010- CO COTTON
SHAWL COLLAR PUFFER
100% COTTON
XS, S, M, L, XL
GOLDENROD
US \$580 / US \$1450



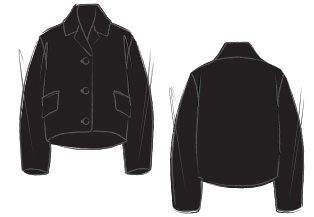
A423JK014 - CO COTTON
SHORT QUILTED JACKET
100% COTTON
36,38,40,42,44,46,48,50
GOLDENROD
US \$516 / US \$1290



A423OW011 - WO WOOL
BELTED DOUBLE BREASTED WAISTED COAT
100% WOOL
LINING: 92% CUPRO, 8% ELASTANE
36,38,40,42,44,46,48,50
BLACK
US \$760 / US \$1900



A423OW015- WO WOOL
RECTANGULAR BOUCLE PEACOCK
100% WOOL
LINING: 92% CUPRO, 8% ELASTANE
36,38,40,42,44,46,48,50
BLACK, BONE
US \$596 / US \$1490

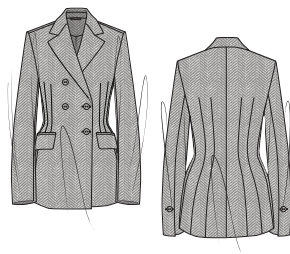


A423JK016 - WO WOOL
CROPPED COCOON BOUCLE JACKET
100% WOOL
LINING: 92% CUPRO, 8% ELASTANE
36,38,40,42,44,46,48,50
BLACK
US \$436 / US \$1090

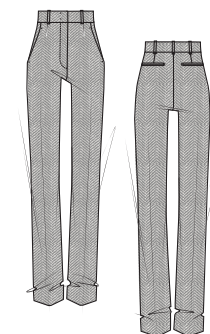


A423SK005 - WO WOOL
STRUCTURED BOUCLE MINI SKIRT
100% WOOL
LINING: 92% CUPRO, 8% ELASTANE
36,38,40,42,44,46,48,50
BLACK
US \$236 / US \$590

Traditionally boucle fabrics are made using synthetic yarns blended with wool to create the boucle structure. By using a knit boucle we are able to eliminate the synthetic fibers, thus eliminating microfiber shedding (of synthetic fibers) and creating a textile that can be biodegradable at the end of its life.



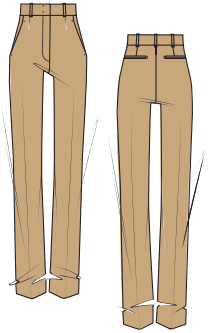
A323JK015 - WV WOOL
STRUCTURED DOUBLE BREASTED WAISTED JACKET
100% WOOL
LINING: 92% CUPRO, 8% ELASTANE
36,38,40,42,44,46,48,50
BLACK/WHITE MICRO HERRINGBONE
US \$596 / US \$1490



A323PT025 - WV WOOL
STRAIGHT LEG TROUSER
100% WOOL
LINING: 92% CUPRO, 8% ELASTANE
36,38,40,42,44,46,48,50
BLACK/WHITE MICRO HERRINGBONE
US \$276 / US \$690



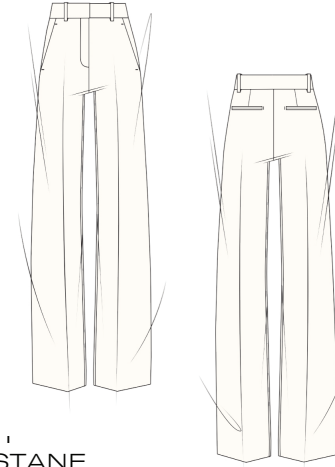
A423JK015- WO WOOL
STRUCTURED DOUBLE BREASTED WAISTED JACKET
98% WOOL, 2% ELASTANE
LINING: 92% CUPRO, 8% ELASTANE
36,38,40,42,44,46,48,50
KHAKI
US \$596 / US \$1490



A423PT025 - WO WOOL
STRAIGHT LEG TROUSER
98% WOOL, 2% ELASTANE
LINING: 92% CUPRO, 8% ELASTANE
36,38,40,42,44,46,48,50
KHAKI
US \$276 / US \$690



A423JK008- WV WOOL
SEAMED WAIST JACKET
98% WOOL, 2% ELASTANE
LINING: 92% CUPRO, 8% ELASTANE
36,38,40,42,44,46,48,50
BONE
US \$596 / US \$1490



A423PT013 - WV W
WIDE LEG SUIT PANTS
98% WOOL, 2% ELASTANE
LINING: 92% CUPRO, 8% ELASTANE
36,38,40,42,44,46,48,50
BONE
US \$276 / US \$690



A423DR053 - WV WOOL
DOLMAN SLEEVE MINI DRESS
96% WOOL, 4% ELASTANE
LINING: 92% CUPRO, 8% ELASTANE
36,38,40,42,44,46,48,50
BLACK
US \$396 / US \$990



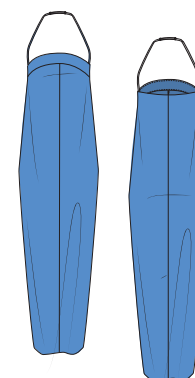
A423DR046 - WV WOOL
CAPE BACK SHEATH DRESS
96% WOOL, 4% ELASTANE
LINING: 92% CUPRO, 8% ELASTANE
36,38,40,42,44,46,48,50
BLACK, PETROL
US \$516 / US \$1290



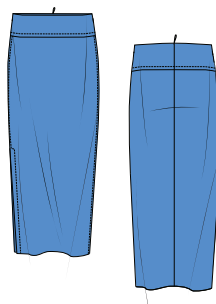
A423PT004- WV WOOL
DOPPIO WIDE LEG PANT
98% WOOL, 2% ELASTANE
LINING: 92% CUPRO, 8% ELASTANE
36,38,40,42,44,46,48,50
BLACK, PETROL
US \$356 / US \$890



A323BL054 - VI VISCOSE
SEAMED SHIRT
98% VISCOSE, 2% ELASTANE
36,38,40,42,44,46,48,50
AEGEAN, BLACK
US \$236 / US \$590



A323DR049 - VI VISCOSE
COCOON ANKLE LENGTH DRESS
98% VISCOSE, 2% ELASTANE
36,38,40,42,44,46,48,50
AEGEAN
US \$516 / US \$1290



A323SK006 - VI VISCOSE
BIAS SLIP SKIRT
98% VISCOSE, 2% ELASTANE
36,38,40,42,44,46,48,50
BLACK, AEGEAN
US \$236 / US \$590



A323DR059 - VI VISCOSE
TURTLENECK FLARE DRESS
98% VISCOSE, 2% ELASTANE
36,38,40,42,44,46,48,50
BLACK
US \$356 / US \$890



A423DR051 - VI VISCOSE
BIAS CHECK MIDI DRESS
98% VISCOSE, 2% ELASTANE
36,38,40,42,44,46,48,50
PETROL/AEGEAN CHECK
US \$356 / US \$890



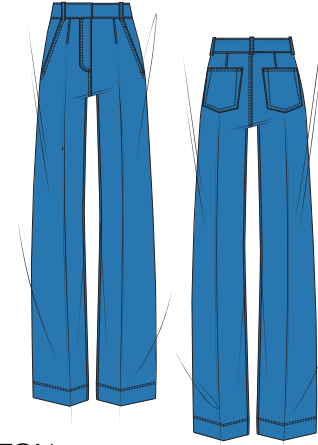
A423BL058 - VI VISCOSE
BIAS CHECK SEAMED SHIRT
98% VISCOSE, 2% ELASTANE
36,38,40,42,44,46,48,50
PETROL/AEGEAN CHECK
US \$196 / US \$490



A423BL014 - VI VISCOSE
V NECK BLOUSE
97% VISCOSE, 3% ELASTANE
36,38,40,42,44,46,48,50
BONE, TEAL
US \$224 / US \$560



A423JK018 - CO COTTON
CROPPED DENIM JACKET
98% CO 2% EA
36,38,40,42,44,46,48,50
LIGHT BLUE WASH
US \$236 / US \$590



A423PT033 - CO COTTON
HIGH WAISTED DENIM TROUSER
98% CO, 2% EA
36,38,40,42,44,46,48,50
LIGHT BLUE WASH
US \$180 / US \$450



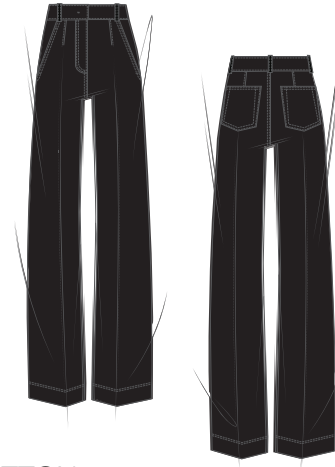
A423DR058- CO COTTON
CHAMBRAY SHIRT DRESS
100% CO
36,38,40,42,44,46,48,50
LIGHT BLUE WASH
US \$236 / US \$590



A423BL059 - CO COTTON
CHAMBRAY SHIRT
100% CO
36,38,40,42,44,46,48,50
LIGHT BLUE WASH
US \$236 / US \$590



A423JK018 - CO COTTON
CROPPED DENIM JACKET
98% COTTON, 2% ELASTANE
36,38,40,42,44,46,48,50
OVERDYED BLACK
US \$236 / US \$590



A423PT027 - CO COTTON
HIGH WAISTED DENIM TROUSER
98% COTTON, 2% ELASTANE
36,38,40,42,44,46,48,50
OVER DYED BLACK
US \$180 / US \$450

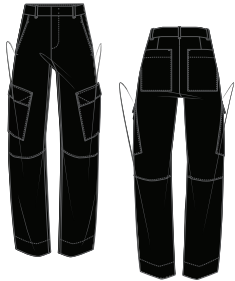
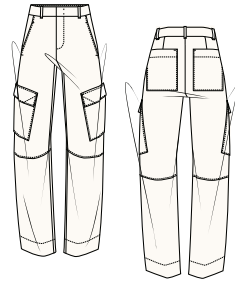


A423DR058- CO COTTON
CHAMBRAY SHIRT DRESS
100% CO
36,38,40,42,44,46,48,50
OVER DYED BLACK
US \$236 / US \$590



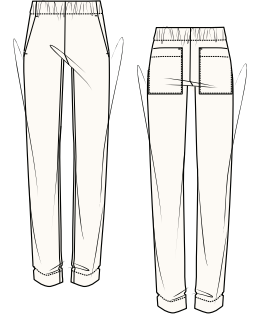
A423BL059 - CO COTTON
CHAMBRAY SHIRT
100% CO
36,38,40,42,44,46,48,50
OVER DYED BLACK
US \$156 / US \$390

AnotherTomorrow

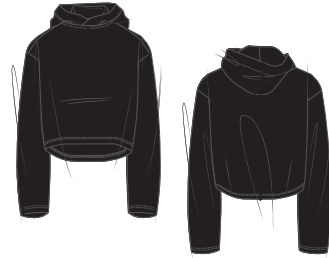


A423PT028 - CO COTTON
CURVED CARGO
50% COTTON, 50% TENCEL
36,38,40,42,44,46,48,50
GOLDENROD, CREAM, BLACK
US \$180 / US \$450

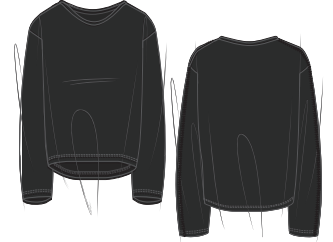
FALL/WINTER 2023: GOTS CERTIFIED CERTIFIED COTTON
LENZING TENCEL BLEND



A423PT029 - CO COTTON
ELASTICATED PANT
50% COTTON, 50% TENCEL
36,38,40,42,44,46,48,50
BLACK, CREAM
US \$168 / US \$420



A423CT051 - CO COTTON
CROPPED HOODIE
100% COTTON SUPIMA
XS, S, M, L, XL
BONE, BLACK
US \$136 / US \$340



A423CT052 - CO COTTON
SCOOPNECK SWEATSHIRT
100% COTTON SUPIMA
XS, S, M, L, XL
BONE, BLACK
US \$116 / US \$290



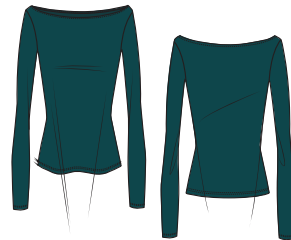
A423CT053 - CO COTTON
JOGGER
100% COTTON SUPIMA
XS, S, M, L, XL
BLACK, BONE
US \$116 / US \$290



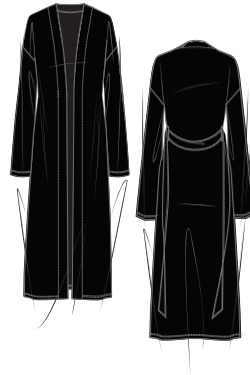
A423CT058-TC TENCEL COTTON
SHIRRED BODYSUIT
47% COTTON, 47% LYOCCELL, 6% ELASTANE
XS,S,M,L,XL
BLACK, PETROL
US \$76 / US \$190



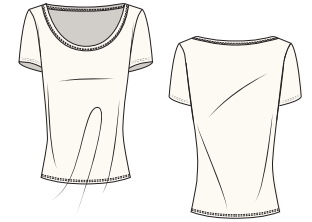
A423CT028-TC TENCEL COTTON
LEOTARD DRESS
47% COTTON, 47% LYOCCELL, 6% ELASTANE
XS,S,M,L,XL
BLACK, PETROL, WHITE
US \$140 / US \$350



A423CT057-TC TENCEL COTTON
LEOTARD TOP
47% COTTON, 47% LYOCCELL, 6% ELASTANE
XS,S,M,L,XL
BLACK, PETROL
US \$72 / US \$180



A323CT054-CT COTTON TENCEL
LIGHTWEIGHT ROBE
100% SEACELL
XS, S, M, L, XL
BLACK, VANILLA
US \$156 / US \$390



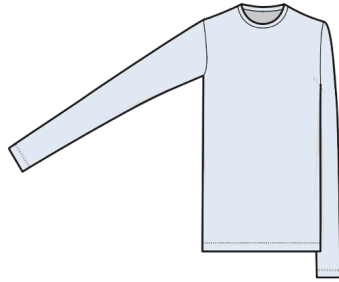
A323CT055-CT COTTON TENCEL
SCOOPNECK T SHIRT
100% SEACELL
XS, S, M, L, XL
BLACK, VANILLA
US \$64 / US \$160



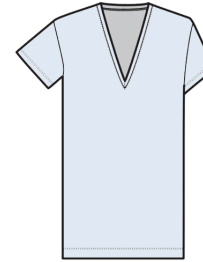
A323CT056-CT COTTON TENCEL
LONG SLEEVE LIGHTWEIGHT T SHIRT
100% SEACELL
XS, S, M, L, XL
BLACK, VANILLA
US \$76 / US \$190



A323CT048- SEACELL
LEGGING
89% MICROTENCEL 11% ELASTANE
36,38,40,42,44,46,48,50
BLACK
US \$128 / US \$320



A423CT003 - CO COTTON
LS TEE
100% SUPIMA COTTON
XS, S, M, L, XL
SKY
US \$52 / US \$130



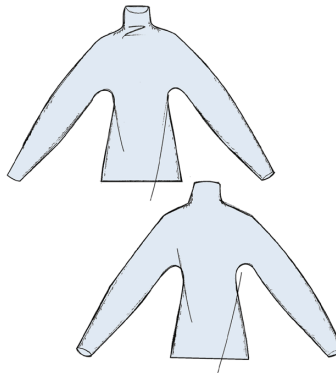
A423CT002 - CO COTTON
V NECK
100% SUPIMA COTTON
XS, S, M, L, XL
SKY
US \$44 / US \$110



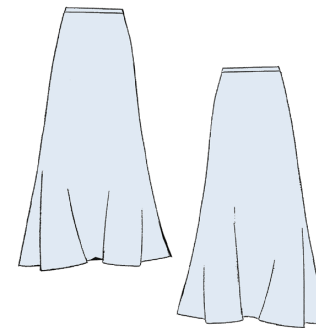
A423KT091 - WO WOOL
RIBBED HENLEY
100% WOOL
XS, S, M, L, XL
SKY, CREAM, BLACK
US \$196 / US \$490



A423KT096 - WO WOOL
OTTOMAN STITCH SWEATER
100% WOOL
XS, S, M, L, XL
SKY, CREAM, BLACK
US \$276 / US \$690



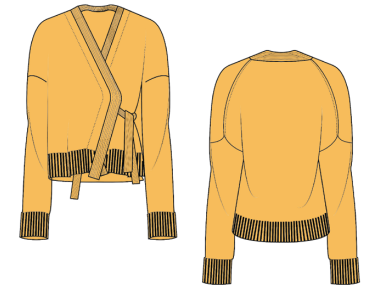
A423KT058 - WO WOOL
MERINO WOOL KNIT TURTLENECK
100% WOOL
XS, S, M, L, XL
SKY
US \$236 / US \$590



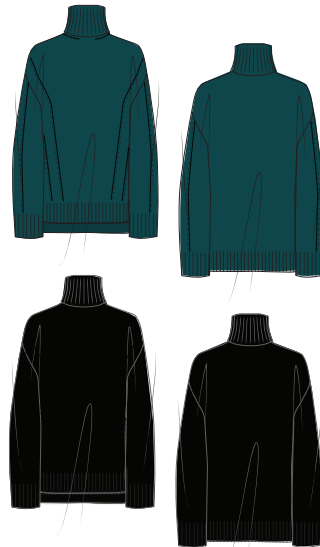
A423KT060 - WO WOOL
MERINO WOOL KNIT SKIRT
100% WOOL
XS, S, M, L, XL
SKY
US \$196 / US \$490



A423KT092 - WS CASHMERE
LONG SLEEVE POLO TOP
95% CASHMERE, 5% WOOL
XS, S, M, L, XL
GOLDENROD, PETROL, BLACK
US \$236 / US \$590



A423KT093 - WS CASHMERE
WRAP CARDIGAN WITH TIES
95% CASHMERE, 5% WOOL
XS, S, M, L, XL
GOLDENROD, BLACK
US \$300 / US \$750



A423KT094 - WS CASHMERE
OVERSIZED TURTLENECK
95% CASHMERE, 5% WOOL
XS, S, M, L, XL
GOLDENROD, PETROL, BLACK
US \$316 / US \$790



A423KT088 - VI VISCOSE
FITTED RIBBED TURTLENECK
83% VISCOSE, 17% POLY
XS, S, M, L, XL
BLACK, PETROL
US \$236 / US \$590



A423KT090 - VI VISCOSE
LONGSLEEVE FLARE DRESS
83% VISCOSE, 17% POLY
XS, S, M, L, XL
BLACK, PETROL
US \$600 / US \$1500

FSC (Forest Stewardship Council)

FSC certification ensures that products come from responsibly managed forests that provide environmental, social and economic benefits. The FSC Principles and Criteria provide a foundation for all forest management standards globally.

- FSC-certified Viscose (Enka & Lenzing)
- Tencel lyocell (Lenzing)

GOTS (Global Organic Textile Standard)

The aim of GOTS is to define requirements to ensure organic status of textiles, from harvesting of the raw materials, through environmentally and socially responsible manufacturing up to labelling to provide a credible assurance to the end consumer. This Standard covers the processing, manufacturing, packaging, labelling, trading and distribution of all textiles made from at least 70% certified organic natural fibers.

- Organic cotton
- Organic linen

GRS (Global Recycled Standard)

The Global Recycled Standard (GRS) is a voluntary product standard for tracking and verifying the content of recycled materials in a final product. The Standard applies to the full supply chain and addresses traceability, environmental principles, social requirements, chemical content and labeling. A GRS certification demonstrates a commitment to truth in materials and support for a circular economy that reduces waste by reusing it to make new products.

- Recycled cashmere
- Recycled cotton
- Recycled nylon
- Recycled polyester
- Recycled wool

RWS (Responsible Wool Standard)

The Responsible Wool Standard (RWS) is an industry tool designed to recognize the best practices of farmers, ensuring that wool comes from farms with a progressive approach to managing their land, and from sheep that have been treated responsibly. As an independent, voluntary Standard, companies can choose to become certified to the RWS. On farms, the certification ensures that sheep are treated with respect to their Five Freedoms* and ensures best practices in the management and protection of the land. The Standard is globally applicable to all breeds of sheep, and mulesing is strictly prohibited.

GOTS Certified Cruelty-Free Silk

Organically produced cruelty-free silk made by artisans paid a fair wage. The process involves non-violent harvesting of the cocoons, as well as a GOTS approved degumming method. There are no pesticides or insecticides on the trees, as well as a minimal use of water and a closed loop water system.

Tencel™

Tencel™ is made from sustainably managed forests, largely utilizing the process of thinning – a technique used in sustainable forestry making use of timber that is unsuitable for high-grade products like furniture. Unlike conventional cellulosic fibers, Tencel™ is produced using a closed-loop spinning process in which almost all the water and chemicals are recycled. An organic solvent is used instead of sodium hydroxide to dissolve the pulp. The production of Tencel™ requires less water and energy than cotton and, as a natural fiber, Tencel™ is also biodegradable.

Seacell

The seaweed in our PYRATEX® seacell fabrics comes from the Icelandic Fjords, where harvesting is done once every four years and the process leaves the regenerative part of the seaweed intact to promote future growth. Seaweed fiber is carbon neutral, produced in a closed loop manufacturing system, with no chemicals released as waste, exclusively from sustainable and renewable raw materials – wood and seaweed – using methods that save both energy and resources. The manufacturing process follows Oeko-Tex Standard 100 protocols and involves mixing the seaweed with cellulose to achieve a 100% biodegradable final fabric.

Farm Traceable Wool

We have selected farm partners listed below who go above and beyond the standards in areas of animal welfare and environmental preservation

- Barega – Tasmania, Australia

Farm owners Chris and Shelley treat their animals with the utmost compassion and have instituted policies prohibiting tail docking and adopting a longer weaning period than is standard for RWS farms.

- White Gum Wool – Tasmania, Australia

The White Gum Wool farm in Tasmania, whose owner Nan shares our ethos and values, is already operating well beyond the requirements of the RWS certification and allows their sheep to live out their natural lives rather than slaughtering them at the age of 6 or 7.

- Congi & Benangaroo (TA Field) – New South Wales, Australia
T.A. Field Estates, a family owned and operated group of 6 expansive properties in NSW which date back to 1906, has been an advocate for young people entering the agricultural industry and they continue to support this cause through creating employment opportunities and encouraging further education in Australian agriculture. Because the properties are located in very diverse agricultural regions, the individual property managers are tasked with implementing regenerative practices suitable for their climate and region.

- Lake Hawea Station – South Island, New Zealand
Our newest farm partner and our first in New Zealand, where mulesing has been banned since 2018, Lake Hawea Station are taking a new approach to sheep farming by being certified Carbon Clear through their regenerative land management and biodiversity projects. They have created a new native forest by planting 10,000 trees and fencing off a portion of their land for preservation.