

ROSE & COLE®

With SomaTech®

Redefine Your Regimen

Unlock your skin's full potential with the world's most effective skincare, leveraging the power of your hormones! Discover the luxury of high-end personalized blends, curated specifically for your DermaType® to reveal the most youthful, healthy, vibrant-looking skin. This simplified regimen is a groundbreaking approach that balances your hormones with clinically backed, advanced ingredients that are the most recommended by dermatologists worldwide. Rose & Cole®, where science meets luxury to Redefine Your Regimen!

Introduction

Hormones play a vital role in every part of the body, but their impact on your skin is always visible. When your skin's hormones are out of balance, the results can be frustrating - fine lines, wrinkles, oiliness, dehydration, acne, and more. For too long, these issues have been compartmentalized, with people being assigned inaccurate skin types that overlook the complexity of your hormone function and how they affect your skins' needs. Your skin isn't just a barrier against the environment; it's also a key to your confidence! Your skin is a one-of-a-kind, intricate system that deserves a comprehensive approach, considering the necessary factors that reflect your overall skin-related hormone health. It's time to embrace a new era of personalized skincare that truly understands and caters to your unique skin journey!

New U Life® is deeply committed to providing you with the luxury of a world class skincare experience. We believe that the traditional concept of skin care is antiquated and inadequate in meeting the skin's deeper hormonal needs. Instead of settling for outdated ingredient blends, cheap packaging technology, and an inaccurate classification system in the traditional skin care industry, you deserve a revolutionary, personalized approach - and that's exactly what Rose & Cole® delivers!! Rose & Cole features exclusive SomaTech® Complexes, fused with the most powerful hero ingredients, to transform your skincare routine. Get ready to elevate the health of your skin to a whole new level with Rose & Cole.

How is Rose & Cole® Different?

Your skin's health and appearance are influenced by many unique factors, including hormones, genetics, diet, environment, lifestyle, and more. Unfortunately, these individual considerations are overlooked by conventional skin care approaches, which tend to adopt a one-size-fits-all system that defines your skin by its weaknesses. Instead of focusing solely on one specific skin concern, our formulas are meticulously crafted with a combination of "Hero" ingredients and exclusive SomaTech® hormone support complexes. This groundbreaking approach allows us to curate specific blends that target skin-related hormone health to address multiple skin concerns and cater to the unique needs of your skin. Through our 5-factor DermaType® technology, we provide a personalized regimen that focuses on the strength of your skin's protective functions and supporting the related hormones.

With Rose & Cole®, you can expect each product to deliver on the promise of a brighter, more luminous, and youthful complexion!

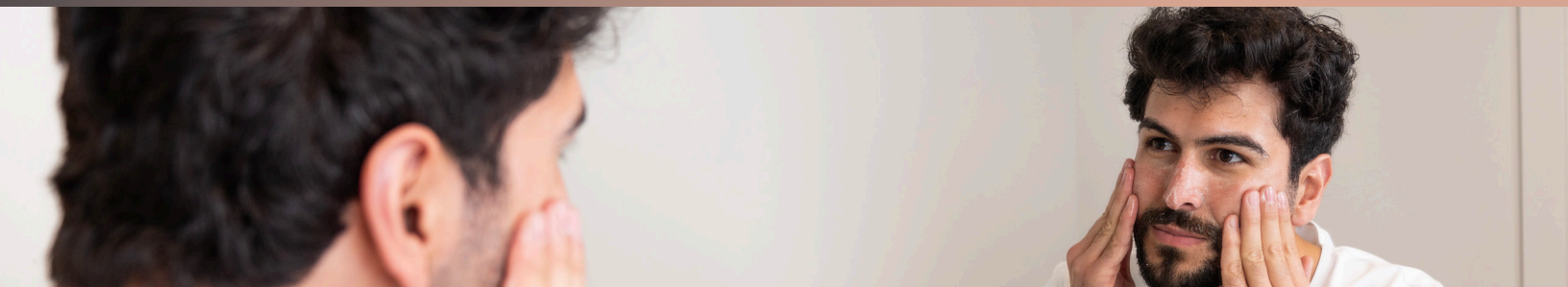
Imagine the allure of exquisite scents, the feel of luxurious textures, and the benefits of advanced delivery of key ingredients, all designed to leave your skin hydrated, radiant, even toned and fresh. From the moment you open each product, you're met with the elegance of Italian-designed packaging, the precision of Swiss manufacturing, and the cutting-edge innovation of American ingenuity. Rose & Cole is more than skincare; it's an extraordinary journey that revives your skin even through the most stubborn challenges.

Discover the Future of Skincare with SomaTech®!

Simply put, SomaTech® Complexes contain proven hormone balancing ingredients and are the foundation of each Rose & Cole® product. SomaTech® is what sets us apart and revolutionizes how you care for your skin by tackling the often-overlooked impact of hormones. With SomaTech, we've harnessed the power of clinically effective hormone support ingredients to counteract the negative effects hormones can have on your skin, ensuring you always look and feel your best.

Seamlessly integrated into Rose & Cole's exclusive formulas, SomaTech fights the signs and symptoms of aging that manifest through unbalanced hormones in the skin. From Testosterone and Estrogen, all the way to Cortisol, each SomaTech Complex is meticulously crafted with specific, scientifically backed ingredients that zero in on issues caused by hormone imbalances, transforming your skincare routine into a truly exceptional experience.

Our advanced delivery process ensures that these potent blends—whether water-soluble, oil-soluble, or solid-particle hero ingredients—are absorbed more effectively, enhancing their performance and maximizing the benefits for your skin. With SomaTech, you're not just caring for your skin—you're elevating it to new heights of health and beauty. Welcome to the future of skincare.








DERMATYPES: Your Key to Personalization

What is DermaType® Technology?

Rose & Cole® defies conventional skincare classifications and goes beyond surface-level assessments to identify hormone-related imbalances in your skin's protective functions. It assesses the activity level of your skin's five key protective functions to provide a comprehensive understanding of its unique needs.

Each DermaType® is assigned a specific solution of ingredient blends, curated to address your skin's individual requirements. This personalized approach ensures optimal hormone-based support for these five key factors to deliver unmatched skincare results, enhancing both the quality and appearance of your skin.

These Protective Functions Include:

-  **Collagen Content:** A protein in the body responsible for healthy structural framework (skin elasticity and joints).
-  **Lipid Content:** Part of the composition of the outer skin layer, lipids play a role in maintaining a healthy skin barrier which determines how healthy and even skin looks.
-  **Sebacous Gland:** This is your skin's gland for producing oil. While some oil is a good thing for your skin, excessive oil may contribute to clogged pores and other skin issues.
-  **Skin Moisture Barrier:** Your skin's moisture barrier is influenced by two factors - its ability to retain hydration and the rate at which moisture evaporates from the skin.
-  **Melanin:** A genetic protective function that is highly correlated to the overall quality of your skin. Melanin is the pigment in your skin that provides protection from UV light.



How Do I Determine My DermaType®?

To discover your DermaType, please go to www.newulife.com and take our skin assessment for the most accurate assessment of your skin's needs. You may also see the end of this Product Information Page for a comprehensive breakdown of each DermaType to discover which one you align closest to.



Explore the Simplicity of Rose & Cole®: C-P-R For the Skin

We know that life can be complicated, your skincare regimen shouldn't be. We have carefully designed the core steps of the Rose & Cole regimen to rejuvenate your skin. These steps are Cleanse, Preserve, and Revive.

Cleanse

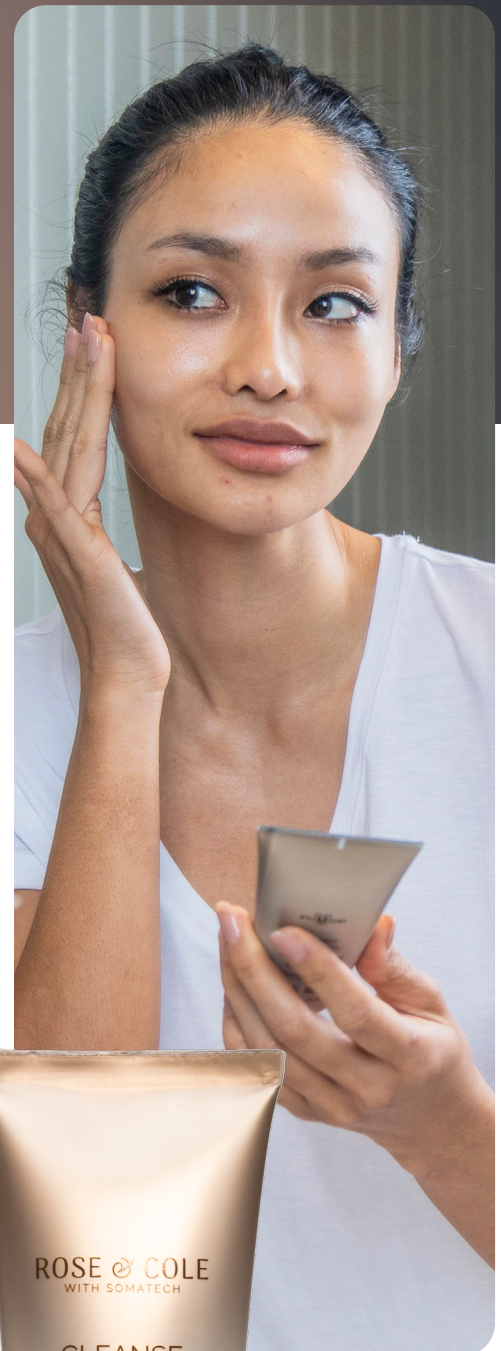
The Rose & Cole Regimen features two powerhouse cleansers. The foundation of your regimen begins with proper cleansing; Rose & Cole Cleanse and Intense Cleanse ensure you do it right. Our cleansers, formulated with SomaTech® Complexes, include scientifically validated ingredients suitable for your DermaType®, leaving your face feeling clean, vibrant, nourished, and refreshed.

Preserve Daytime Complexes

Youthful skin is worth preserving, and Rose & Cole Preserve Complex is up to the task. These highly protective day creams utilize different SomaTech Complexes, to provide 360-degree skin hormone support and protection. Packed with a potent blend of vitamins, antioxidants, prebiotics, and postbiotics, these creams are your anti-aging masterpieces. Innovative key ingredients paired with SomaTech enhance your youth, leaving your skin satin-soft and glowing. These products are tailored to your DermaType.

Revive Ideal Feel Evening Serums

Your night routine just got a major upgrade! These serums offer an immediate and continuous hormone-focused anti-aging effect, brightening, enhancing, and reviving your complexion while you sleep. Powered by SomaTech to balance skin hormone health and enriched with powerful ingredients, these serums diminish the appearance of fine lines, scars, and wrinkles, helping to rejuvenate your skin. Wake up to a vibrant and luminous complexion with your DermaType specific Revive serum.



INTENSE CLEANSE Advanced Facial Cleanser



Uncover Your Skin's True Clarity

Suitable for every DermaType

Intense Cleanse Advanced Facial Cleanser utilizes our SomaTech® blend Tri-Bio Complexion Control Complex, formulated to remove makeup, excess oil, dirt, and impurities from the skin. This luxurious creamy formula goes beyond cleansing by also nourishing and brightening the skin to improve its tone and texture. Enhanced with antioxidant-rich vitamins and nourishing oils, Intense Cleanse soothes and hydrates the skin, leaving it feeling clean, refreshed, and looking vibrant. (First step in the double cleansing routine.)

Key Ingredients May:

- Purify and Refresh: Dissolves impurities, leaving your skin feeling purified and refreshed.
- Nourish Your Skin: Delivers a burst of antioxidants, feeding your skin with the nutrients it craves.
- Lock in Moisture: Key ingredients drench your skin in moisture, keeping it soft, plump, and smooth.
- Brighten and Illuminate: Brightens your complexion, revealing a luminous, even skin tone.
- Transform Your Texture: Refines your skin's texture, leaving it velvety smooth and beautifully radiant.
- Calm and Soothe: Soothes inflammation, calming even the most sensitive skin.
- Reduce Redness: Reduces redness, giving you a calm, clear, and even complexion.
- Defend Against Damage: Protects your skin from harmful environmental stressors.
- Strengthen & Protect: Fortifies skin's natural barrier, locking in moisture & protecting against daily aggressors.
- Smooth and Condition: Conditions your skin, leaving it feeling soft, smooth, and irresistibly touchable.





Key SomaTech® Hormone Support Ingredients May:

- Help manage hormonal acne through regulating sebum production by inhibiting 5-alpha reductase, reducing DHT levels, and providing anti-inflammatory benefits.
- Help reduce hyperpigmentation and soothes skin during hormonal fluctuations by inhibiting melanin production and provides anti-inflammatory support.
- Provide antioxidant protection and strengthens the skin barrier, reducing oxidative stress and improving hydration during hormonal changes.

How To Use:

Use during your AM and PM regimen

Apply a small amount to fingertips and then massage over a wet face with light circular massage movements. Rinse thoroughly. Use morning and night.

Ingredients:

Aqua (Water), Olea Europaea (Olive) Fruit Oil, Pentylene Glycol, Prunus Armeniaca (Apricot) Kernel Oil, Vitis Vinifera (Grape) Seed Oil, Coco-Glucoside, Palmitic Acid, Stearic Acid, Cetearyl Alcohol, Hydroxyethyl Acrylate/Sodium Acryloyldimethyl Taurate Copolymer, Glycerin, Oleic/Linoleic/Linolenic Polyglycerides, Parfum (Fragrance), Tocopheryl Acetate, Butyl Avocadate, Tocopherol, Brassica Campestris (Rapeseed) Seed Oil, Acrylates/C10-30 Alkyl Acrylate Crosspolymer, 1,2-Hexanediol, Caprylyl Glycol, Cetearyl Glucoside, Sodium Hydroxide, Glycyrrhiza Glabra (Licorice) Root Extract, Polyglyceryl-3 Diisostearate, Polysorbate 60, Sorbitan Isostearate, Helianthus Annuus (Sunflower) Seed Oil, Benzyl Salicylate, Althaea Officinalis Root Extract, Oryza Sativa (Rice) Bran Extract



CLEANSE Facial Wash



Purify, Refresh, Renew

Suitable for every DermaType

Refresh and clarify your skin with our Cleanse Facial Wash. This gentle foaming gel cleanser and toner features Somatech® Probiotic Clarity Complex, which provides a gentle yet effective cleansing experience. It effectively removes excess oil, dirt, and impurities, leaving your skin and pores clean. Additionally, it works to support a healthy and balanced skin microbiome through probiotic-powered anti-inflammatory support. (Second step in the double cleansing routine.)

Key Ingredients May:

- **Reveal Radiant Skin:** Brightens your complexion, unveiling a more luminous and even skin tone.
- **Soothe and Calm:** Melts away redness and irritation, leaving your skin feeling soothed and refreshed.
- **Hydrate Deeply:** Boosts your skin's elasticity and moisture for a supple, youthful glow.
- **Fight Blemishes:** Works to keep your pores clear and blemish-free, ensuring your skin stays clear and smooth.
- **Fade Scars and Marks:** Reduces the appearance of scars and imperfections, promoting flawless, healthy-looking skin.
- **Strengthen Your Skin:** Revitalizes skin cells, helping repair and fortify your skin's barrier for long-lasting resilience.
- **Smooth and Refine:** Refines your skin texture, leaving it smooth and polished.
- **Control Shine:** Expertly balances oil production, keeping your skin beautifully matte and shine-free all day long.
- **Protect and Heal:** Shields your skin from environmental damage while supporting the healing process.
- **Feel Fresh and Clean:** Enjoy a thorough, refreshing cleanse that respects your skin's natural balance, leaving it feeling soft, clean, and incredibly refreshed.



Key SomaTech® Hormone Support Ingredients May:

- Exfoliate the skin, unclog pores, and reduce inflammation, helping to manage acne and other skin issues caused by hormonal changes.
- Counteract androgen fluctuations by regulating sebum production and enhancing barrier function to provide smoother, clearer skin.
- Maintain a healthy microbiome and provide antimicrobial benefits, helping to manage hormonal acne and support overall skin health.
- Strengthen the skin barrier and support microbiome balance, reducing sensitivity and supporting overall skin health while balancing hormonal fluctuations.

How To Use:

Use during your AM and PM regimen

Apply liberally to wet face and gently massage into the skin, rinse thoroughly and pat dry. Use morning and evening.



Ingredients:

Aqua (Water), Coco-Betaine, Potassium Cocoyl Glycinate, Coco-Glucoside, Niacinamide, Acrylates Copolymer, Potassium Cocoate, Aloe Barbadensis Leaf Juice, Algae Extract, 1,2-Hexanediol, Caprylyl Glycol, Saccharomyces/Rice Ferment Filtrate, Alcohol Denat., Arnica Montana Flower Extract, Parfum (Fragrance), Salicylic Acid, Brassica Campestris (Grapeseed) Seed Oil, Butylene Glycol, Saccharomyces Ferment Lysate Filtrate, Leuconostoc/Radish Root Ferment Filtrate, Pentylene Glycol, Glycyrrhiza Glabra (Licorice) Root Extract, Polyglyceryl-3 Diisostearate, Citric Acid, Althaea Officinalis Root Extract, Oryza Sativa (Rice) Bran Extract, Sodium Benzoate, Potassium Sorbate, Ethylhexylglycerin, Sodium Hydroxide

PRESERVE Daytime Complex (Adaptive)



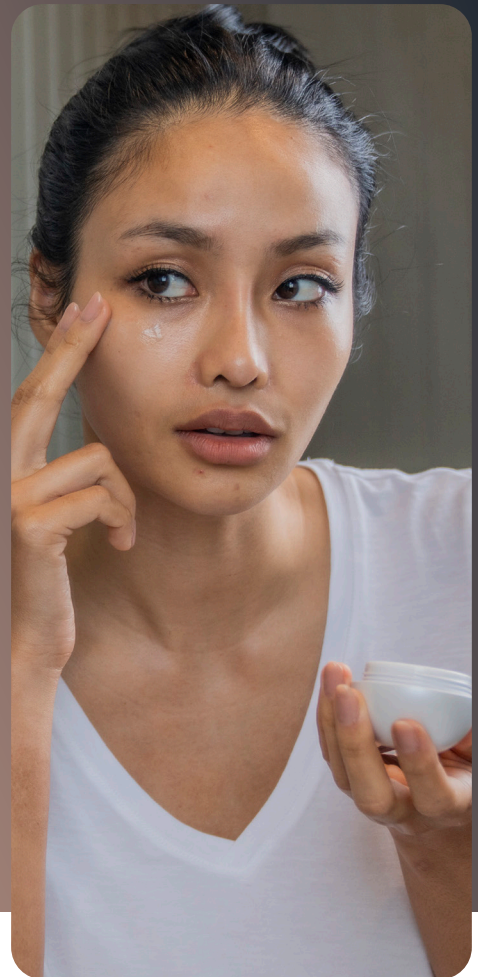
Strengthen, Protect, & Perfect Your Skin

Suitable for an Adaptive Dermatype

Experience the transformative benefits of our Preserve Adaptive daytime Complex, formulated to preserve and enhance your skin's youthful appearance. Powered by SomaTech® Anti-Senescence-HydroLock Complex, Preserve offers a multitude of advantages for your skin. It works to improve the skin's barrier function, improve collagen production, retain essential moisture, enhance hydration, reduce the visibility of wrinkles, improve skin elasticity, and lighten dark spots.

Key Ingredients May:

- Firm and Lift: Firms and tones, giving your skin a youthful, sculpted look that turns back the clock.
- Drench in Hydration: Provides deep hydration, ensuring your skin stays plump, soft, and beautifully hydrated.
- Brighten and Revitalize: Brightens and even out your skin tone, unveiling a radiant, flawless complexion.
- Fortify and Protect: Reinforces your skin's natural barrier, protecting it from daily environmental assaults.
- Smooth Away Wrinkles: Works to smooth fine lines and wrinkles, giving you a youthful, refreshed appearance.
- Boost Elasticity: Restores your skin's bounce with this powerful blend that enhances elasticity, making your skin look firmer and more resilient.
- Shield Against Pollution: Creates a protective shield, defending your skin against harmful environmental factors.
- Soothe and Calm: Soothes irritated skin, reducing redness and leaving your complexion calm and comfortable.
- Control Oil Production: Balances oil levels, ensuring your skin stays shine-free and beautifully matte throughout the day.
- Nurture Your Skin: Supports your skin's natural microbiome, enhancing its overall health and vitality for a fresh, glowing look.



Key SomaTech® Hormone Support Ingredients May:

- Support anti-wrinkle benefits and skin firmness while reducing inflammation.
- Restore the lipid barrier and provide antioxidant protection.
- Offer antioxidant defense and enhance moisturization for plumpness.
- Support collagen production for skin structure support.
- Provide deep hydration.
- Anti-Senescence-HydroLock Complex: Provide moisture locking benefits to plump, soften and smooth away the appearance of wrinkles with the antioxidant rich blend that also brightens and promotes luminosity.

How To Use:

Use during your AM regimen

Put a small amount onto fingertips and massage gently onto cleansed skin. Massage gently onto face with upward strokes every morning.

Ingredients:

Aqua (Water), Pentylene Glycol, Niacinamide, Cetearyl Isononanoate, Caprylic/Capric Triglyceride, Isopropyl Isostearate, Butylene Glycol, Cetearyl Alcohol, Glyceryl Stearate, PEG-100 Stearate, Dimethicone, Squalane, Glycerin, Hydroxyethyl Acrylate/Sodium Acryloyldimethyl Taurate Copolymer, VP/VA Copolymer, Aloe Barbadensis Leaf Juice, Propanediol, Jojoba Esters, Maltodextrin, Panthenol, Ethylhexyl Stearate, Helianthus Annuus (Sunflower) Seed Wax, Tocopherol, Parfum (Fragrance), Cetareth-20, Alcohol, 1,2-Hexanediol, Caprylyl Glycol, Acacia Senegal Gum, Xanthan Gum, Tocopheryl Acetate, Lactobacillus Ferment Lysate, Lecithin, Polyglycery Diisostearate/Polyhydroxystearate/Sebacate, Sodium Hyaluronate Crosspolymer, Sodium Isostearate, Sodium Phytate, Polysorbate 60, Sorbitan Isostearate, Citric Acid, Carnosine, Helianthus Annuus (Sunflower) Seed Oil, Polyglycerin-3, Acacia Decurrens Flower Cera (Acacia Decurrens Flower Wax), Caesalpinia Spinosa Fruit Extract, Saccharomyces Ferment Lysate Filtrate, Helianthus Annuus (Sunflower) Sprout Extract, Panax Ginseng Root Extract, Ubiquinone, Sodium Hydroxide, Sodium Benzoate, Hydrolyzed Rhodophyceae Extract, Tuber Magnatum Extract, Potassium Sorbate, Silybum Marianum Fruit Extract, CI 42090 (Blue 1)



PRESERVE Daytime Complex (Dynamic)



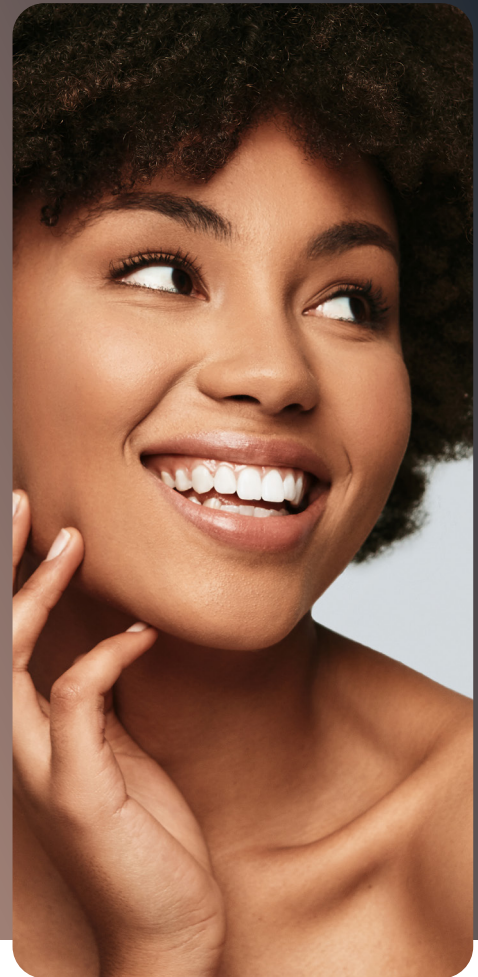
Energize, Revitalize, & Illuminate Your Skin

Suitable for a Dynamic Dermatype

Preserve the youthful appearance of your skin with our daytime Preserve Dynamic Complex. Powered by SomaTech® Anti-Senescence-HydroLock Complex offers a multitude of benefits for your skin. It provides essential hydration, soothes the skin, balances oil production, protects against environmental stressors, and reduces the appearance of fine lines and wrinkles.

Key Ingredients May:

- **Illuminate Your Skin:** Works to brighten your skin, giving you a radiant, glowing complexion.
- **Deep, Lasting Hydration:** Quenches your skin's thirst, keeping it soft and supple all day.
- **Turn Back Time:** Smooths fine lines and wrinkles, revealing youthful, revitalized skin.
- **Fortify Your Skin Barrier:** Strengthens your skin's protective barrier, locking in moisture and shielding against environmental stress.
- **Lift and Firm:** Firms and tones your skin, giving you a more lifted and youthful appearance.
- **Calm and Soothe:** Reduces redness and irritation, leaving your skin calm and comfortable.
- **Enhance Elasticity:** Boosts your skin's elasticity, creating a firmer, more resilient complexion.
- **Defend Against the Elements:** Creates a powerful defense against environmental damage, keeping your skin healthy and protected.
- **Balance and Control:** Regulates sebum production, ensuring your skin stays perfectly balanced and free of excess oil.
- **Boost Radiance:** Infuses your skin with radiance, leaving it looking fresh and glowing.



Key SomaTech Hormone Support Ingredients May:

- Regulate oil production and reduce inflammation.
- Restore the lipid barrier and provide antioxidant protection.
- Fight dryness by offering enhanced moisturization.
- Maintains deep hydration.
- Support optimal collagen production for skin structure support.
- Balance melanin production for even skin tone and reduced hyperpigmentation
- Anti-Senescence-HydroLock Complex: Provide moisture locking benefits to plump, soften and smooth away the appearance of wrinkles with the antioxidant rich blend that also brightens and promotes luminosity.

How To Use:

Use during your AM regimen

Put a small amount onto fingertips and massage gently onto cleansed skin. Massage gently onto face with upward strokes every morning.



Ingredients:

Aqua (Water), Pentylene Glycol, Niacinamide, Cetearyl Isononanoate, Caprylic/Capric Triglyceride, Isopropyl Isostearate, Butylene Glycol, Hydroxyethyl Acrylate/Sodium Acryloyldimethyl Taurate Copolymer, Cetearyl Alcohol, Glyceryl Stearate, PEG-100 Stearate, Dimethicone, VP/VA Copolymer, Camellia Sinensis Leaf Extract, Aloe Barbadensis Leaf Juice, Propanediol, Jojoba Esters, Maltodextrin, Panthenol, Ethylhexyl Stearate, Hydrolyzed Pearl, Squalane, Helianthus Annuus (Sunflower) Seed Wax, Tocopherol, Parfum (Fragrance), Cetearth-20, 1,2-Hexanediol, Caprylyl Glycol, Allantoin, Polysorbate 60, Sorbitan Isostearate, Acacia Senegal Gum, Xanthan Gum, Lactobacillus Ferment Lysate, Polyglyceryl-4 Diisostearate/Polyhydroxystearate/Sebacate, Sodium Hyaluronate Crosspolymer, Sodium Isostearate, Sodium Phytate, Tocopheryl Acetate, Helianthus Annuus (Sunflower) Seed Oil, Polyglycerin-3, Acacia Decurrens Flower Cera (Acacia Decurrens Flower Wax), Caesalpinia Spinosa Fruit Extract, Citric Acid, Saccharomyces Ferment Lysate Filtrate, Helianthus Annuus (Sunflower) Sprout Extract, Sodium Benzoate, Sodium Salicylate, Hydrolyzed Rhodophyceae Extract, Potassium Sorbate, CI 42090 (Blue 1), Sodium Hydroxide



REVIVE Ideal Feel Evening Serum (Adaptive)



Renew, Restore, & Rejuvenate Your Skin

Suitable for an Adaptive DermaType

Revive your youthful appearance with the transformative power of Revive Ideal Feel Adaptive Evening Serum. Formulated with three potent SomaTech® complexes, this luxurious serum delivers visible improvements in collagen production leading to improved fine lines & wrinkles, smoothness, brightness, firming, dark spots, and pores. Revive Serum absorbs quickly working while you sleep creating younger-looking, more radiant skin.

Key Ingredients May:

- Transforms Skin: Renews & resurfaces, unveiling a smoother, more refined complexion with each use.
- Radiant Glow: Works to brighten skin, reducing dark spots & revealing a glowing, complexion.
- Intense Hydration: Floods your skin with moisture, leaving it plump, supple, and beautifully hydrated.
- Smooth Fine Lines: Targets fine lines and wrinkles, smoothing them out for a more youthful look.
- Boost Collagen: Stimulates collagen production, firming your skin and enhancing its natural bounce.
- Enhance Elasticity: Improves skin elasticity, leaving complexion looking firmer, more lifted, & resilient.
- Environmental Defense: Protects skin from environmental stressors, keeping it healthy & radiant.
- Soothe & Comfort: Provides soothing relief, calming irritation & redness for a balanced, complexion.
- Control Oil & Shine: Helps regulate oil production, keeping skin beautifully matte and shine-free all day.
- Nourish and Revitalize: Nourishes deeply, rejuvenating your skin from within.



Key SomaTech® Hormone Support Ingredients May:

- Reduce inflammation for optimal cellular resurfacing and repair.
- Restore the lipid barrier for healthy skin structure
- Offer antioxidant defense and enhance moisturization.
- Provide deep hydration and support collagen production.
- Prevent loss of moisture (TEWL) and maintain hydration essential for managing hormonal dryness and sensitivity.
- Improve skin texture and work synergistically with ceramides and fatty acids to repair and maintain the skin barrier.
- Enhance collagen synthesis, inhibit melanin production counteracting the effects of decreased estrogen and increased melanogenesis.
- Help maintain an even skin tone during hormonal fluctuations.

How To Use:

Use during your PM regimen

1. Shake gently before use.
2. Gently press the applicator button at the top of the cap and put the dropper into the glass jar.
3. Release the button and the dropper will collect the serum (You may need to do this a couple of times).
4. Lift the dropper from the bottle and release the desired amount onto your fingertips. A little goes a long way, so start with a small amount.
5. Apply the serum evenly across your face using gentle smoothing upward and outward motions to ensure full absorption.

Remember, a little bit goes a long way.



Ingredients:

Aqua (Water), Butylene Glycol, Niacinamide, Caprylic/Capric Triglyceride, C12-20 Acid PEG-8 Ester, Glycerin, Dimethicone, Cetearyl Isononanoate, Isopropyl Palmitate, Macadamia Integrifolia Seed Oil, Potassium Cetyl Phosphate, Aloe Barbadensis Leaf Juice, Phenoxyethanol, Panthenol, Ethylhexyl Stearate, Carbomer, Squalane, Rosa Moschata Seed Oil, Polyglyceryl-10 Stearate, Tocopherol, Cera Alba (Beeswax), Parfum (Fragrance), Phospholipids, Retinol, Hydrolyzed Lupine Protein, Triethyl Citrate, Hydrogenated Rapeseed Oil, Caprylyl Glycol, 1,2-Hexanediol, Sodium Hydroxide, Polyglyceryl-6 Behenate, Ceramide Np, Ethylhexylglycerin, Lysine Hcl, Polyglyceryl-4 Diisostearate/Polyhydroxystearate/Sebacate, Sodium Hyaluronate Crosspolymer, Sodium Isostearate, Sodium Phytate, Tocopheryl Acetate, Lecithin, Ceramide Ap, Cholesterol, Phytosphingosine, Helianthus Annuus (Sunflower) Seed Oil, Behenic Acid, Cetearyl Alcohol, Glyceryl Stearate, Sodium Levulinate, Citric Acid, Saccharomyces Ferment Lysate Filtrate, Potassium Sorbate, Fucus Vesiculosus Extract, Sodium Benzoate, Benzyl Salicylate, Palmitoyl Tripeptide-5, Hexyl Cinnamal, Linalool, Sodium Cetearyl Sulfate, Limonene, Crithmum Maritimum Extract, Geraniol, Tripeptide-10 Citrulline, Ceramide Eop, Rosmarinus Officinalis (Rosemary) Extract

REVIVE Ideal Feel Evening Serum (Dynamic)



Elevate, Brighten, & Energize Your Skin

Suitable for a Dynamic DermaType

Revive your youthful appearance with the transformative power of Revive Ideal Feel Dynamic Evening Serum. Formulated with three potent SomaTech® complexes, this comprehensive formula locks in moisture, battles blemishes through regulating oil production, softens and smooths the appearance of lines and wrinkles, and helps to reduce and lighten the look of dark spots creating an even-toned radiant complexion.

Key Ingredients May:

- **Banish Blemishes:** Diminish blemishes and reveal clear, flawless skin.
- **Even and Brighten:** Evens out your skin tone, brightening your complexion with every use.
- **Quench Your Skin:** Delivers a surge of moisture, keeping your skin hydrated, smooth, and radiant.
- **Boost Firmness:** Stimulates collagen production, enhancing skin firmness and giving you a more youthful, lifted look.
- **Strengthen Your Barrier:** Fortifies your skin's natural barrier, locking in moisture and protecting against external stressors.
- **Smooth Away Wrinkles:** Targets wrinkles, smoothing them out for a rejuvenated, youthful complexion.
- **Nourish and Repair:** Deeply nourishes and repairs your skin, restoring its natural vitality and health.
- **Clear and Prevent Acne:** Keeps your skin clear and blemish-free, preventing breakouts and leaving your skin flawless.
- **Enhance Elasticity:** Improves skin elasticity, making your complexion firmer, more resilient, and visibly younger.
- **Guard Against Damage:** Creates a protective shield, defending your skin from environmental aggressors.



Key SomaTech® Hormone Support Ingredients May:

- Regulate oil production and reduce inflammation for anti-blemish support.
- Support even skin tone and brightening
- Restore the lipid barrier for healthy skin structure
- Offer antioxidant defense and enhance moisturization.
- Provide deep hydration and support collagen production for optimal smoothness and firming.
- Prevent loss of moisture (TEWL) and maintain hydration essential for managing hormonal dryness and sensitivity.
- Improve skin texture and work synergistically with ceramides and fatty acids to repair and maintain the skin barrier.
- Enhance collagen synthesis, inhibit melanin production counteracting the effects of decreased estrogen and increased melanogenesis.
- Address hyperpigmentation and oxidative stress by inhibiting melanin production and providing antioxidant benefits
- Help to manage pigmentation disorders and maintain an even skin tone during hormonal fluctuations.



How To Use:

Use during your PM regimen

1. Shake gently before use.
2. Gently press the applicator button at the top of the cap and put the dropper into the glass jar.
3. Release the button and the dropper will collect the serum (You may need to do this a couple of times).
4. Lift the dropper from the bottle and release the desired amount onto your fingertips. A little goes a long way, so start with a small amount.
5. Apply the serum evenly across your face using gentle smoothing upward and outward motions to ensure full absorption.

Remember, a little bit goes a long way.

Ingredients:

Aqua (Water), Butylene Glycol, Niacinamide, Arginine, C12-20 Acid PEG-8 Ester, Glycerin, Undecylenoyl Phenylalanine, Ascorbyl Glucoside, Caprylic/Capric Triglyceride, Dimethicone, Polysorbate 60, Potassium Cetyl Phosphate, Panthenol, Cetearyl Isononanoate, Sodium Acrylate/Sodium Acryloyldimethyl Taurate Copolymer, Isopropyl Palmitate, Kojic Acid, Phenoxyethanol, Tocopherol, C15-19 Alkane, Ethylhexyl Stearate, Macadamia Integrifolia Seed Oil, Squalane, Polyglyceryl-10 Stearate, Cera Alba (Beeswax), Parfum (Fragrance), Sodium Citrate, Triethyl Citrate, Hydrogenated Rapeseed Oil, Acacia Senegal Gum, 1,2-Hexanediol, Caprylyl Glycol, Glycine, Polyglyceryl-6 Laurate, Proline, Sodium Phytate, Sorbitol, Xanthan Gum, Polyglyceryl-6 Behenate, Ceramide Np, Helianthus Annuus (Sunflower) Seed Oil, Carrageenan, Ethylhexylglycerin, Polyglyceryl-4 Diisostearate/Polyhydroxystearate/Sebacate, Sodium Hyaluronate Crosspolymer, Sodium Isostearate, Rosa Moschata Seed Oil, Polyglycerin-6, Ceramide Ap, Cholesterol, Phytosphingosine, Behenic Acid, Cetearyl Alcohol, Glyceryl Stearate, Sodium Levulinate, Tocopheryl Acetate, Sorbitan Oleate, Sorbitan Isostearate, Citric Acid, Potassium Sorbate, Benzyl Salicylate, Hexyl Cinnamal, Linalool, Bis(Tripeptide-1) Copper Acetate, Hydrolyzed Soy Protein, Sodium Cetearyl Sulfate, Limonene, Geraniol, Ceramide Eop, Rosmarinus Officinalis (Rosemary) Extract

INTENSE REVIVE Advanced Serum



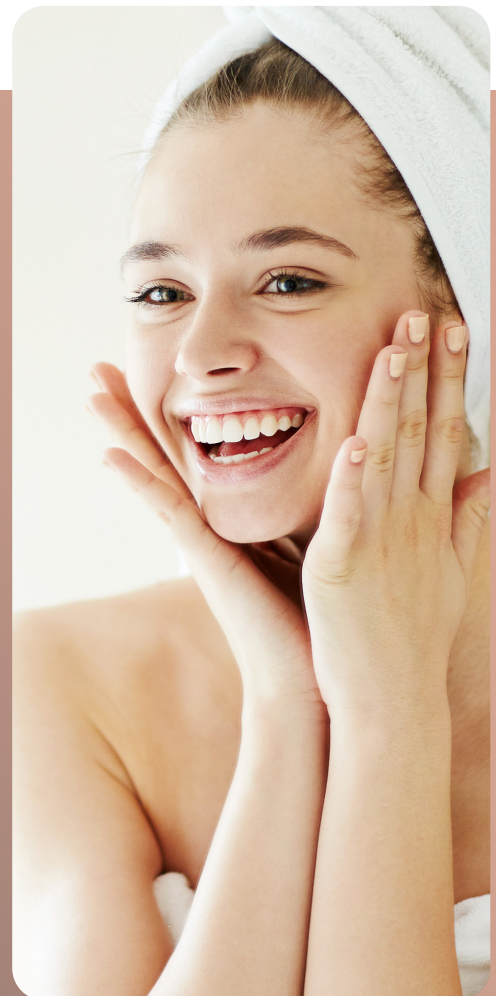
Deep Renewal for Youthful, Radiant, Skin

Suitable for every DermaType

Experiencing intense signs of aging? Fight back with our most advanced serum that targets even the most aggressive signs of premature aging! Designed with a concentrated powerhouse of ingredients, Intense Revive Advanced Serum features our SomaTech® Bio-Lift Peptide Complex. With Intense Revive, your skin is left looking lifted, firmed up, & smooth. This remarkable advanced serum will help maintain your skin's youthful look and elasticity while transforming the overall appearance of your skin.

Key Ingredients May:

- **Lift and Sculpt:** Delivers a lifting effect, sculpting your face for a firmer, more youthful look.
- **Smooth Out Wrinkles:** Works to smooth away wrinkles and fine lines.
- **Drench in Moisture:** Hydrates your skin deeply, leaving it plump, smooth, and incredibly soft.
- **Enhance Firmness:** Boosts your skin's firmness, giving you a lifted, resilient appearance.
- **Refine Texture:** Enhances your skin's texture, making it feel silky smooth and look more refined.
- **Boost Collagen:** Stimulates collagen production, firming your skin and reducing visible signs of aging.
- **Defend Against Damage:** Protects your skin from environmental damage, keeping it healthy and radiant.
- **Calm and Comfort:** Soothes irritation, leaving your skin feeling calm, comfortable, and beautifully balanced.
- **Reduce Puffiness:** Reduces puffiness, especially around the eyes, giving you a refreshed and well-rested look.
- **Illuminate Your Skin:** Lightens dark spots, revealing a more even, luminous complexion.



Key SomaTech® Hormone Support Ingredients May:

- Provide maximum antioxidant defense and stimulate optimal collagen synthesis, reducing oxidative stress, restoring youthful skin firmness.
- Reduce the appearance of intense wrinkles and promote skin elasticity.
- Reduce advanced inflammation, counteracting the effects of decreased estrogen, promoting skin repair.
- Inhibit muscle contractions to reduce dynamic wrinkles and maintain skin firmness.

How To Use:

Use during your PM regimen

1. Shake gently before use.
2. Gently press the applicator button at the top of the cap and put the dropper into the glass jar.
3. Release the button and the dropper will collect the serum (You may need to do this a couple of times).
4. Lift the dropper from the bottle and release the desired amount onto your fingertips. Remember, a little goes a long way, so start with a small amount.
5. Apply the serum evenly across your face using gentle smoothing upward and outward motions to ensure full absorption.

Remember, a little bit goes a long way.



Ingredients:

Aqua (Water), Butylene Glycol, C12-20 Acid PEG-8 Ester, Glycerin, Caprylic/Capric Triglyceride, Dimethicone, Cetearyl Isononanoate, Isopropyl Palmitate, Potassium Cetyl Phosphate, Phenoxyethanol, Pullulan, Carbomer, Macadamia Integrifolia Seed Oil, Cera Alba (Beeswax), Parfum (Fragrance), Hydrogenated Rapeseed Oil, 1,2-Hexanediol, Caprylyl Glycol, Sodium Hydroxide, Ethylhexylglycerin, Sodium Phytate, Nannochloropsis Oculata Extract, Pentylene Glycol, Sodium Lactate, Coco-Glucoside, Benzyl Salicylate, Sodium Benzoate, Hexyl Cinnamal, Linalool, Limonene, Citric Acid, Geraniol, Acetyl Hexapeptide-8, Palmitoyl Tripeptide-1, Palmitoyl Tetrapeptide-7

REVITALIZE Eye Cream



Refresh, Brighten, & Renew Your Skin

Suitable for every DermaType

Open your eyes to an elevated look and experience optimal rejuvenation with our Revitalize Eye Cream. Enriched with the potent SomaTech® VitaC-Tri Peptide Line Correction Complex, this luxurious cream delivers multiple benefits to the delicate under-eye area. It effectively reduces puffiness, brightens the skin, firms the area, and uplifts for a more youthful appearance.

Key Ingredients May:

- **Smooth Away Wrinkles:** Visibly reduces wrinkles and fine lines, giving you a smoother, younger-looking complexion.
- **Brighten Your Eyes:** Brightens dark circles, making your eyes look fresh, awake, and youthful.
- **Quench Dry Skin:** Delivers intense hydration, keeping your skin plump, soft, and beautifully nourished.
- **Firm and Lift:** Improves skin elasticity, firming and lifting your delicate eye area.
- **Soothe and Refresh:** Provides soothing relief, calming and comforting even the most sensitive skin.
- **Strengthen and Protect:** Fortifies your skin's barrier, protecting it from environmental stressors and locking in moisture.
- **Depuff Instantly:** Reduces puffiness, giving you a refreshed, well-rested appearance.
- **Guard Against Free Radicals:** Shields your skin from free radicals, keeping it youthful and radiant.
- **Silky Smooth Texture:** Smooths your skin's texture, leaving it feeling soft, silky, and luxuriously refined.
- **Calm and Comfort:** Reduces inflammation, soothing your skin and promoting a balanced, even complexion.



Key SomaTech® Hormone Support Ingredients May:

- Enhance collagen synthesis, inhibit melanin production, and reduce inflammation, counteracting the effects of decreased estrogen and increases melanogenesis.
- Stimulate lymphatic function and reduce inflammation, improving skin elasticity and smoothness while counteracting fluid retention caused by hormonal changes.
- Stimulate collagen production and reduce inflammation, counteracting the effects of decreased estrogen and promotes cellular skin repair.

How To Use:

Use as a last step during your AM and PM regimen

Gently press the pump until a small amount of product appears on the applicator, massage gently around eye area until fully absorbed. Use morning and night.



Ingredients:

Aqua (Water), C12-20 Acid PEG-8 Ester, Niacinamide, Sodium Ascorbyl Phosphate, Pentylene Glycol, Glycerin, Dicaprylyl Ether, Butylene Glycol, Butyrospermum Parkii (Shea) Butter, Cellulose, Dimethicone, Steareth-21, Tocopheryl Acetate, Vitis Vinifera (Grape) Seed Oil, Phenoxyethanol, Hydroxyethyl Acrylate/Sodium Acryloyldimethyl Taurate Copolymer, Microcrystalline Cellulose, Cetearyl Alcohol, Ethylhexyl Stearate, Squalane, Carbomer, Panthenol, Cellulose Gum, Hesperidin Methyl Chalcone, Ethylhexylglycerin, Steareth-20, Polyglyceryl-4 Diisostearate/Polyhydroxystearate/Sebacate, Sodium Hyaluronate Crosspolymer, Sodium Isostearate, Polysorbate 60, Sorbitan Isostearate, Sodium Lactate, Fucus Vesiculosus Extract, Coco-Glucoside, Sodium Citrate, Chlorhexidine Digluconate, Citric Acid, Dipeptide-2, Potassium Sorbate, Crithmum Maritimum Extract, Palmitoyl Tetrapeptide-7, Tocopherol, Palmitoyl Tripeptide-1, Sodium Hydroxide

ESSENTIALS KITS



Dynamic Essentials Kit

- Cleanse Facial Wash (AM and PM)
- Preserve Dynamic Complex (AM)
- Revive Ideal Feel Dynamic Complex (PM)

Adaptive Essentials Kit

- Cleanse Facial Wash (AM and PM)
- Preserve Adaptive Complex (AM)
- Revive Ideal Feel Adaptive Complex (PM)

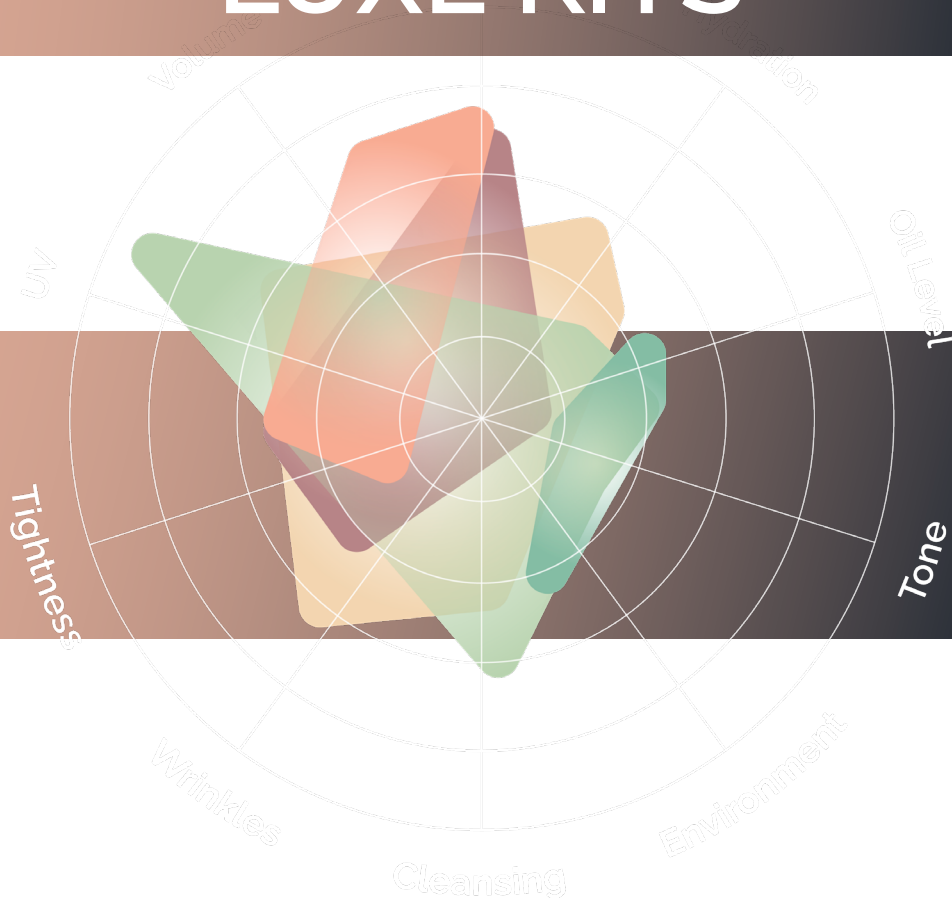
Mixed A/D Essentials Kit

- Cleanse Facial Wash (AM and PM)
- Preserve Adaptive Complex (AM)
- Revive Ideal Feel Dynamic Complex (PM)

Mixed D/A Essentials Kit

- Cleanse Facial Wash (AM and PM)
- Preserve Dynamic Complex (AM)
- Revive Ideal Feel Adaptive Complex (PM)

LUXE KITS



Dynamic Luxe Kit

- Cleanse Facial Wash (AM and PM)
- Intense Cleanse (AM and PM)
- Preserve Dynamic Complex (AM)
- Revive Dynamic Serum
- Intense Revive Advanced Serum (PM)
- Revitalize Eye Cream (AM and PM)

Adaptive Luxe Kit

- Cleanse Facial Wash (AM and PM)
- Intense Cleanse (AM and PM)
- Preserve Adaptive Complex (AM)
- Revive Ideal Feel Adaptive Serum (PM)
- Intense Revive Advanced Serum (PM)
- Revitalize Eye Cream (AM and PM)

Mixed A/D Luxe Kit

- Cleanse Facial Wash (AM and PM)
- Intense Cleanse (AM and PM)
- Preserve Adaptive Complex (AM)
- Revive Dynamic Serum
- Intense Revive Advanced Serum (PM)
- Revitalize Eye Cream (AM and PM)

Mixed D/A Luxe Kit

- Cleanse Facial Wash (AM and PM)
- Intense Cleanse (AM and PM)
- Preserve Dynamic Complex (AM)
- Revive Ideal Feel Adaptive Serum (PM)
- Intense Revive Advanced Serum (PM)
- Revitalize Eye Cream (AM and PM)

ROSE & COLE REGIMENS

ESSENTIALS DAILY AM ROUTINE



Step 1: Cleanse

Apply a small amount to wet face, massage gently in a circular motion. Rinse thoroughly and pat dry. Use morning and night.

Step 2: Preserve

Pat a small amount between fingertips and press gently into cleansed skin. Massage gently onto face, neck, and décolletage with upward strokes. Use it every morning.

ESSENTIALS DAILY PM ROUTINE

Step 1: Cleanse

Apply a small amount to wet face, massage gently in a circular motion. Rinse thoroughly and pat dry. Use morning and night.

Step 2: Revive

Shake well before use. Apply a few drops onto fingertips, gently massage onto face and neck. Apply every evening.



LUXE DAILY AM ROUTINE

Step 1: Intense Cleanse

Apply a small amount to wet face, massage gently in a circular motion. Rinse thoroughly and pat dry. Use morning and night.

Step 2: Cleanse

Apply a small amount to damp skin, in light circular motions smooth onto skin. Rinse thoroughly. Use morning and night.

Step 3: Preserve Complex

Pat a small amount between fingertips and press gently into cleansed skin. Massage gently onto face, neck, and décolletage with upward strokes. Use it every morning.

Step 4: Revitalize

Press the pump until a small amount of product appears on the applicator, massage gently around eye area until fully absorbed. Use morning and night.

LUXE DAILY PM ROUTINE

Step 1: Intense Cleanse

Apply a small amount to wet face, massage gently in a circular motion. Rinse thoroughly and pat dry. Use morning and night.

Step 2: Cleanse

Apply a small amount to damp skin, in light circular motions smooth onto skin. Rinse thoroughly. Use morning and night.

Step 3: Revive

Shake well before use. Apply a few drops onto fingertips, gently massage onto face and neck. Apply every evening.

Step 4: Intense Revive

Shake well before use. Apply a few drops onto fingertips, gently massage onto face and neck. Apply every evening.

Step 5: Revitalize

Press the pump until a small amount of product appears on the applicator, massage gently around eye area until fully absorbed. Use morning and night.

COMPLEMENTARY PRODUCTS



SomaDerm

SomaDerm gel is your key to preserving your youth and fighting aging. SomaDerm is safe, effective, and features a homeopathic glandular and botanical blend delivered through an innovative transdermal delivery system. With a foundation of bio-identical somatropin you can say goodbye to painful injections and ineffective oral supplements. SomaDerm is non-invasive and is designed to revitalize your body's natural ability to produce human growth hormone (HGH) resulting in incredible benefits. With more than 6 million bottles sold, hundreds of thousands of people are rediscovering the key to living young: SomaDerm.



SomaNight

SomaNight's exclusive ingredient blend promotes healthy insulin-like growth factor 1 (IGF-1) production and helps optimize human growth hormone (HGH) utilization. What does that mean for you? Simply put, better rest, better recovery, and better hormone health that empowers you to rise to meet the demands of your day!



Hydrate

UNUSUAL™ Hydrate Hydrating Mist is specifically formulated to provide your skin with an instant boost of hydration, leaving it looking and feeling revitalized. Infused with a blend of nourishing ingredients, Hydrate Hydrating Mist is designed to soothe and calm your skin while delivering essential hydration. When used with Rose & Cole, Hydrate is best used during the day to give your skin an instant boost of moisture between your AM and PM regimens.



Shield

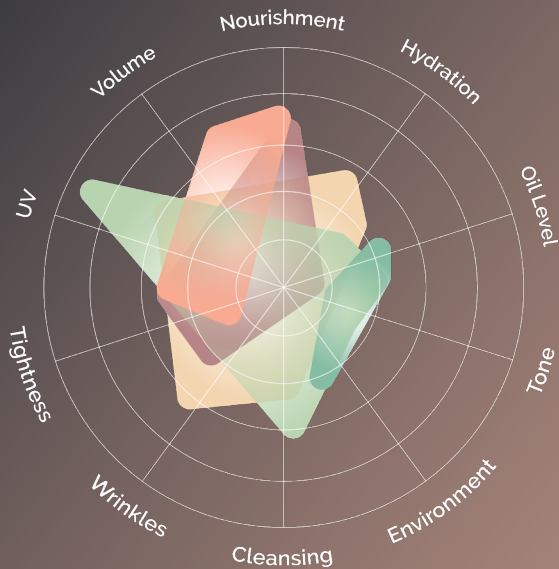
Modeled by nature, UNUSUAL™ Shield delivers ingredients where you need them, when you need them most. This feature rich solution provides broad spectrum UV protection while stimulating collagen production, providing deep hydration, and reducing the appearance of fine lines and wrinkles. All while protecting your body's largest organ, the skin! If using alongside Rose & Cole, use as the last step in your daytime regimen.

How Do I Determine My DermaType®?

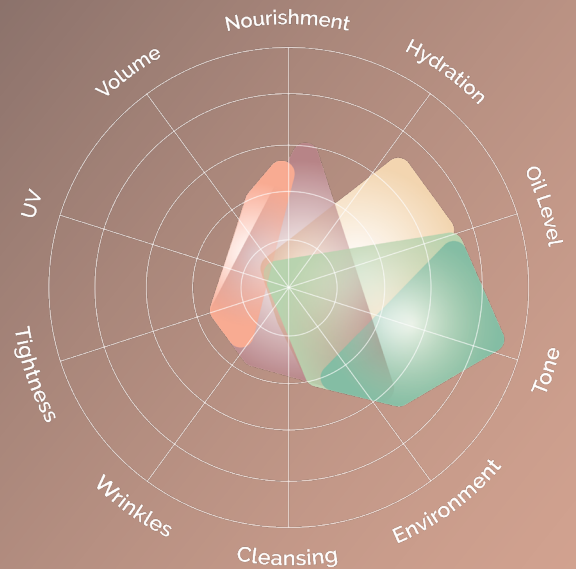
Rose & Cole® uses a proprietary DermaType® skin assessment to classify your skin's activity level of its protective functions. DermaType technology goes above and beyond the typical skin classification to provide your unique regimen tailored to your skin.

There are four different DermaTypes. They are Adaptive, Dynamic, Mixed A/D, Mixed D/A Type. Each regimen is a personalized experience that addresses exactly what your skin hormones need. The following pages provide a detailed breakdown of each DermaType characteristic. You can also discover your DermaType® with our intuitive skin assessment! Visit www.newulife.com to find the assessment.

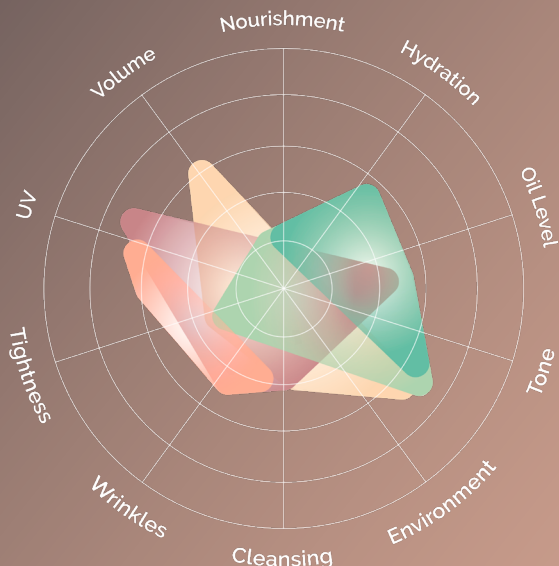
DERMATYPE: ADAPTIVE



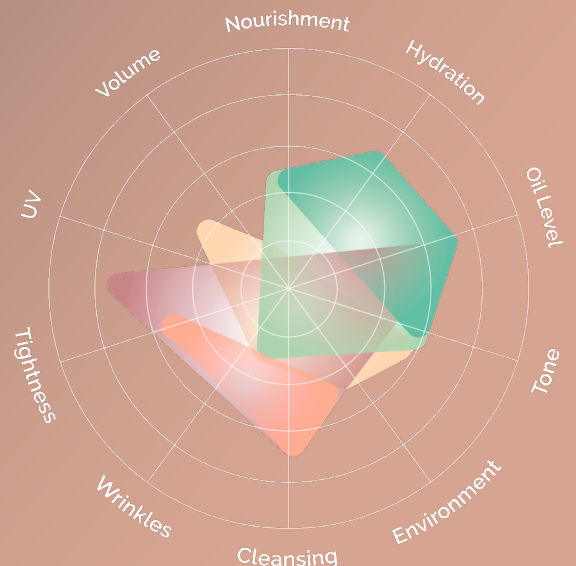
DERMATYPE: DYNAMIC



DERMATYPE: MIXED A/D



DERMATYPE: MIXED D/A



1. Adaptive DermaType

Key Characteristics:

- The Adaptive DermaType requires consistent reinforcement of skin structure and flexibility. This type benefits from products that enhance collagen production, improve elasticity, and minimize fine lines and wrinkles, while also supporting hydration, microbiome health, and overall skin resilience.

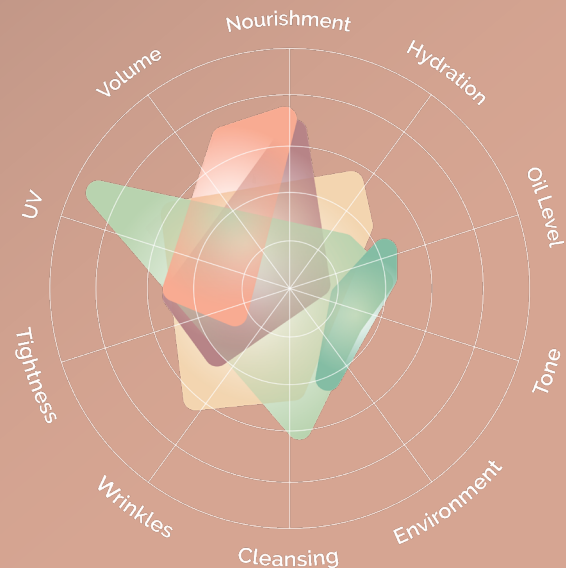
Benefits of the Adaptive Kit:

- **Cleanse Facial Wash:** This cleanser purifies and refreshes the skin by removing impurities while preserving essential oils. It supports a balanced microbiome, which is crucial for maintaining skin stability and minimizing sensitivity. Additionally, it prepares the skin for better absorption of collagen-boosting treatments, ensuring the skin remains clean, vibrant, and ready to receive further benefits.
 - Purifies & refreshes the skin, helping to unclog pores & reduce inflammation caused by hormonal changes.
 - Supports a balanced microbiome and provides antimicrobial benefits to maintain clear and healthy skin.
- **Preserve Adaptive Complex:** The Preserve Adaptive Complex is a powerhouse in enhancing collagen production, essential for maintaining skin firmness and elasticity. It works to visibly reduce fine lines and wrinkles, promoting a more youthful appearance. The complex also deeply hydrates the skin, ensuring it remains supple, smooth, and well-protected throughout the day. The formula fortifies the skin's natural barrier, provides antioxidant defense against environmental aggressors, and supports a balanced microbiome, all of which contribute to an overall radiant and resilient complexion. benefits to maintain clear and healthy skin.
 - Firms and tones the skin, providing a youthful, sculpted look.
 - Offers deep hydration, ensuring skin remains plump, soft, and hydrated.
 - Brightens and revitalizes the complexion for a radiant, flawless look.

- Fortifies the skin's barrier, protecting it from environmental stressors.
- Smooths away fine lines and wrinkles, boosting skin elasticity and resilience.
- Balances oil production and supports skin's natural microbiome for enhanced vitality.

- **Revive Ideal Feel Adaptive Serum:** This serum is designed to work overnight, delivering a concentrated dose of ingredients that stimulate collagen synthesis, enhancing skin elasticity and firmness. It significantly reduces the appearance of fine lines and wrinkles, contributing to a smoother, more youthful complexion. The serum also brightens the skin, improves texture, and ensures deep hydration, helping to rebuild the skin's lipid barrier. Furthermore, it regulates oil production, soothes any irritation, and supports the skin's microbiome, ensuring the skin wakes up balanced, refreshed, and radiant.

- Renews and resurfaces the skin, promoting a smoother, more refined complexion.
- Provides intense hydration, leaving the skin plump and moisturized.
- Smooths fine lines and enhances skin elasticity, making the skin appear firmer and more resilient.
- Regulates oil production and soothes inflammation for a balanced, even complexion.



2. Dynamic DermaType

Key Characteristics:

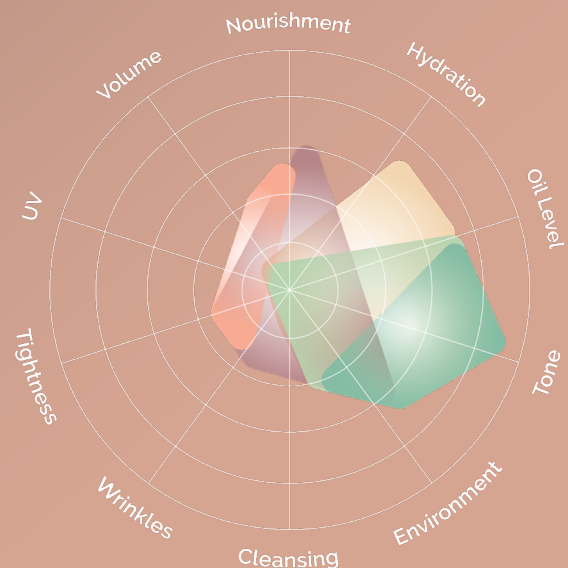
The Dynamic DermaType is characterized by its active nature, often needing regulation of oil production, hydration, and brightening to maintain a balanced, glowing complexion. While anti-aging benefits are present, the primary focus is on keeping the skin clear, smooth, and evenly toned.

Benefits of the Dynamic Kit:

- **Cleanse Facial Wash:** Ideal for more active skin, this cleanser efficiently removes excess oil, dirt, and impurities, helping to prevent breakouts. It also provides deep hydration, enhancing skin elasticity and creating a youthful glow. Its brightening effects help even out the complexion, crucial for managing pigmentation issues and maintaining a clear, vibrant skin tone. Additionally, it supports a healthy skin microbiome, ensuring the skin remains balanced and protected against environmental stressors.
 - Brightens the complexion, unveiling a more luminous and even skin tone.
 - Soothes and hydrates deeply, boosting skin elasticity for a youthful glow.
 - Keeps pores clear and reduces blemishes, promoting flawless skin.
 - Strengthens the skin barrier, protecting it from environmental damage.
- **Preserve Dynamic Complex:** This day cream is formulated to revitalize and energize the skin, delivering deep, lasting hydration while regulating sebum production. It works to illuminate the complexion, giving the skin a radiant, glowing appearance. The formula strengthens the skin's barrier, locking in moisture and providing powerful antioxidant protection against environmental damage. It also enhances skin smoothness and elasticity, helping to maintain an even texture and prevent fine lines. The complex balances oil levels and supports the skin's microbiome, making it an ideal choice for maintaining overall skin health and vitality.
 - Illuminates the skin, creating a radiant, glowing complexion.
 - Provides long-lasting hydration, keeping the skin supple and soft.

- Smooths fine lines and wrinkles, revealing youthful, revitalized skin.
- Strengthens the skin's protective barrier and balances sebum production, preventing excess oiliness.
- Enhances skin elasticity and defends against environmental damage.

- **Revive Ideal Feel Dynamic Serum:** The Dynamic Serum is focused on refining skin texture and reducing blemishes, with a strong emphasis on achieving a clear and even complexion. It delivers a surge of moisture, keeping the skin hydrated and plump, while its brightening properties work to reduce the appearance of dark spots and pigmentation. The serum also stimulates collagen production, contributing to firmer skin, and regulates oil production to prevent breakouts. It supports the skin's natural repair processes overnight, leaving the skin refreshed and radiant by morning, while also fortifying the skin barrier and maintaining a balanced microbiome.
 - Diminishes blemishes and enhances skin clarity for a flawless appearance.
 - Evens skin tone and brightens the complexion with each use.
 - Provides a surge of moisture, keeping skin hydrated and radiant.
 - Stimulates collagen production, enhancing firmness and reducing signs of aging.
 - Protects against environmental stressors and repairs the skin's barrier, maintaining a healthy, resilient complexion.



3. Mixed A/D DermaType

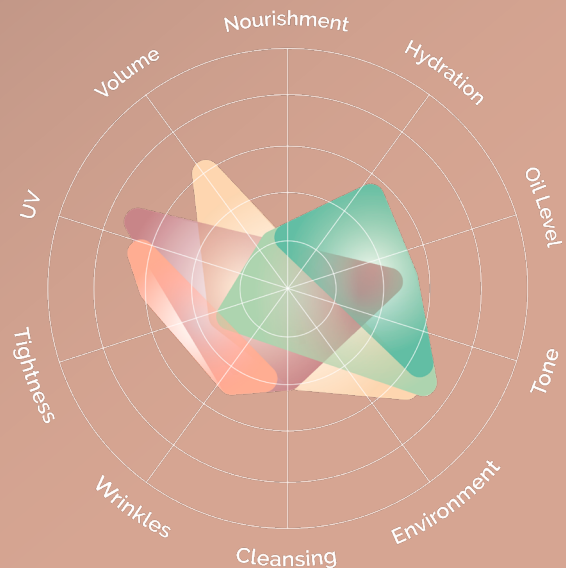
Key Characteristics:

The Mixed A/D DermaType experiences varying needs, requiring a regimen that can address these needs. The A/D DermaType Kit primarily focuses on the skin's need for intensive treatment with the Revive Ideal Feel Dynamic Serum, while the Preserve Adaptive Complex provides essential support. This type benefits from targeted action to refine skin texture, brighten the complexion, and manage sebum production to reduce blemishes, with added hydration and collagen support to maintain firmness and elasticity and maintain overall skin balance.

Benefits of the Mixed A/D Kit:

- **Cleanse Facial Wash (shared across all types):** A versatile cleanser that accommodates the needs of Mixed A/D skin, effectively purifying while maintaining a healthy microbiome. It addresses both dry and oily conditions, ensuring the skin remains clear, balanced, and comfortable. The cleanser prepares the skin for subsequent treatments, enhancing the effectiveness of hydration and collagen-boosting products.
 - Purifies and refreshes the skin, helping to unclog pores and reduce inflammation caused by hormonal changes.
 - Supports a balanced microbiome and provides antimicrobial benefits to maintain clear and healthy skin.
- **Preserve Adaptive Complex:** On days when the skin leans towards dryness or needs extra support, this day cream works to enhance collagen production and improve skin elasticity, making the skin feel firmer and more resilient. It also provides deep, long-lasting hydration, smooths fine lines and wrinkles, and offers antioxidant protection against environmental damage. The formula brightens the complexion, supports the skin's microbiome, and ensures that the skin remains radiant and supple throughout the day.
 - Enhances collagen production, firming and toning the skin to maintain a youthful appearance.

- Deeply hydrates the skin, ensuring it remains supple, smooth, and well-protected throughout the day.
- Fortifies the skin's natural barrier and provides antioxidant defense against environmental aggressors.
- **Revive Ideal Feel Dynamic Serum:** At night, when the skin might become more active or oily, this serum balances sebum production and refines skin texture. It provides intense hydration and brightening benefits, helping to reduce dark spots and promote an even, luminous complexion. The serum also supports collagen synthesis, enhancing firmness, and ensures that the skin wakes up refreshed, clear, and rejuvenated by morning as the skin might become more active or oily, this serum balances sebum production refreshed, clear, and rejuvenated by morning.
 - Refines skin texture and reduces blemishes, contributing to a clear, even complexion.
 - Provides a surge of moisture, keeping the skin hydrated and plump.
 - Brightens the skin, reduces the appearance of dark spots and pigmentation, and stimulates collagen production for firmer skin.
 - Regulates oil production and soothes inflammation, supporting the skin's natural repair processes overnight.



4. Mixed D/A DermaType

Key Characteristics:

The D/A DermaType Kit leverages the powerful anti-aging and skin-renewing properties of the Revive Ideal Feel Adaptive Serum, while the Preserve Dynamic Complex helps maintain a clear, balanced complexion. This combination is ideal for skin that needs intense collagen stimulation and texture refinement for a smooth clear complexion alongside consistent hydration and enhanced skin resilience for optimal protection.

Benefits of the Mixed D/A Kit:

- **Cleanse Facial Wash (shared across all types):**

Perfect for Mixed D/A skin, this cleanser offers a thorough cleansing experience that removes excess oil while preserving the skin's moisture balance. It supports the skin's microbiome and reduces inflammation, helping to prevent breakouts and keep the skin clear, refreshed, and prepared for further treatments.

- Brightens the complexion, unveiling a more luminous and even skin tone.
- Soothes and hydrates deeply, boosting skin elasticity for a youthful glow.
- Keeps pores clear and reduces blemishes, promoting flawless skin.
- Strengthens the skin barrier, protecting it from environmental damage.

- **Preserve Dynamic Complex:** This day cream is designed to regulate oil production and provide deep hydration to prevent dryness. It strengthens the skin's barrier, protecting it from environmental stressors and ensuring that moisture is retained. The formula illuminates the complexion, reducing dark spots and promoting an even skin tone, while also enhancing skin elasticity and resilience. Additionally, it supports the skin's microbiome, ensuring overall skin health and vitality.

- Illuminates the skin, creating a radiant, glowing complexion.
- Provides long-lasting hydration, keeping the skin supple and soft.

- Smooths fine lines and wrinkles, revealing youthful, revitalized skin.
- Strengthens the skin's protective barrier and balances sebum production, preventing excess oiliness.

- **Revive Ideal Feel Adaptive Serum:** At night, this serum delivers soothing hydration and supports collagen production, enhancing skin elasticity and firmness. It works to reduce fine lines and wrinkles while calming any irritation or redness. The serum also rebuilds the lipid barrier, ensuring that the skin remains smooth, supple, and well-hydrated. Its brightening effects help to even out the skin tone and reduce pigmentation issues, leaving the skin radiant and balanced by morning.

- Renews and resurfaces the skin, promoting a smoother, more refined complexion.
- Provides intense hydration, leaving the skin plump and moisturized.
- Smooths fine lines and enhances skin elasticity, making the skin appear firmer and more resilient.
- Regulates oil production and soothes inflammation, ensuring the skin wakes up balanced, refreshed, and radiant.

